

Review Article

Physiology and pathophysiology of cyclooxygenase-2 and prostaglandin E2 in the kidney

Rikke Nørregaard^{1,*}, Tae-Hwan Kwon², Jørgen Frøkiær¹¹ Institute of Clinical Medicine, Aarhus University, Aarhus, Denmark² Department of Biochemistry and Cell Biology, School of Medicine, Kyungpook National University, Korea

A B S T R A C T

Article history:

Received 5 October 2015

Accepted 13 October 2015

Available online 12 November 2015

Keywords:

Acute kidney injury

Cyclooxygenase

Obstructive nephropathy

Prostaglandin E2

Water balance

The cyclooxygenase (COX) enzyme system is the major pathway catalyzing the conversion of arachidonic acid into prostaglandins (PGs). PGs are lipid mediators implicated in a variety of physiological and pathophysiological processes in the kidney, including renal hemodynamics, body water and sodium balance, and the inflammatory injury characteristic in multiple renal diseases. Since the beginning of 1990s, it has been confirmed that COX exists in 2 isoforms, referred to as COX-1 and COX-2. Even though the 2 enzymes are similar in size and structure, COX-1 and COX-2 are regulated by different systems and have different functional roles. This review summarizes the current data on renal expression of the 2 COX isoforms and highlights mainly the role of COX-2 and PGE2 in several physiological and pathophysiological processes in the kidney.

Copyright © 2015. The Korean Society of Nephrology. Published by Elsevier Ltd. This is an open access article under the CC BY-NC-ND license (<http://creativecommons.org/licenses/by-nc-nd/4.0/>).

Introduction

Prostaglandins (PGs) are important lipid mediators of numerous physiological and pathophysiological processes in the kidney. During normal physiological conditions, PGs play an essential role in the regulation of renal hemodynamic, renin release, as well as water and salt balance [1–3]. Likewise, PG synthesis can be stimulated in response to distinct pathophysiological situations, including inflammation, pain, and cancer [4,5]. PGs are derived from enzymatic metabolism of free arachidonic acid to PGG2 and subsequently to PGH2 followed by the production of the bioactive PGs—PGE2, PGI2, PGD2, PGF2 α —and thromboxane A2 by tissue-specific synthases (Fig. 1) [6,7]. Cyclooxygenase (COX) is the rate-limiting enzyme that is responsible for the first 2 steps in the

synthesis of PGs. The COX enzyme exists in 2 isoforms, COX-1 and COX-2. These 2 isoforms have a comparable molecular mass of 71 and 73 kDa, respectively, but their expression and distribution within the renal tissue are different. COX-1 is constitutively expressed at high levels maintaining normal housekeeping functions. COX-2 is expressed at low levels in the kidney under normal physiological conditions and is highly induced in response to inflammation and renal injury [1,6]. In this review, we will highlight mainly the role of COX-2 and PGE2 in several physiological and pathophysiological processes in the kidney.

Physiologic conditions

COX-1 and COX-2 in the kidney

The differential expression and distribution of the 2 COX isoforms implicate them as being involved in the regulation of various physiological functions within the kidney (Fig. 2). COX-1 is the dominant isoform to be expressed in glomerular

* Corresponding author. Institute of Clinical Medicine, Aarhus University, Palle Juul-Jensens Boulevard 99, DK-8200 Aarhus North, Denmark.

E-mail address: rn@clin.au.dk (R Nørregaard).

<http://dx.doi.org/10.1016/j.krccp.2015.10.004>

2211-9132/Copyright © 2015. The Korean Society of Nephrology. Published by Elsevier Ltd. This is an open access article under the CC BY-NC-ND license (<http://creativecommons.org/licenses/by-nc-nd/4.0/>).

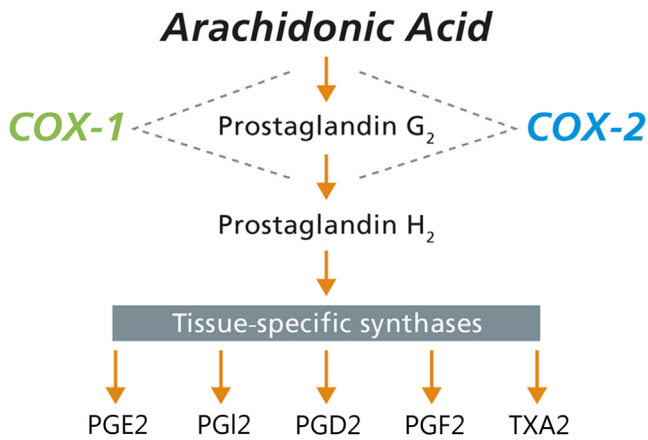


Figure 1. COX pathway of arachidonic acid metabolism. COX-1 or COX-2 converts arachidonic acid to PGG₂ and furthermore to PGH₂ via COX and peroxidase activity. PGH₂ is next metabolized to 5 major bioactive prostanooids—PGE₂, PGI₂, PGD₂, PGF₂, and TXA₂—through their respective tissue-specific synthases. COX, cyclooxygenase; PG, prostaglandin; TX, thromboxane.

mesangial cells, arteriolar endothelial cells, as well as in cortical and medullary collecting ducts in the kidney of bovine, rabbit, guinea pig, rat, and mouse [8,9]. In the human kidney, COX-1 has been identified in the collecting duct cells, interstitial cells, and vasa recta [10,11]. In contrast, basal COX-2 expression is less intense and displays some interspecies variation in localization. COX-2 distribution has been localized in the macula densa of the cortical thick ascending limb of Henle and interstitial cells in rodents, rabbit, and dogs [8,12,13]. COX-2 immunoreactivity has also been described in intercalated cells of the cortical collecting ducts in mouse kidney sections

[14]. In humans, COX-2 is associated with parts of the renal vasculature, loop of Henle, and podocytes [10,11]. Furthermore, COX-2 has been detected in macula densa in humans >60 years of age [15]. In general, regarding COX-2 distribution, it is important to be aware that the previously reported expression of COX-2 has only been reported during normal physiological conditions. In response to inflammatory states, however, COX-2 may be expressed in many more cells and different cell types within the kidney [16].

COX-deficient mouse models have provided important information regarding the role of COX-2. Additional investigation into the physiological and pathophysiological effects of these 2 isoforms has also been acquired from COX-deficient mice. Importantly, mice disrupted for COX-1 appear to be generally healthy, and there are no obvious renal defects [17]. In contrast, mice with gene disruption of COX-2 have severe nephropathy, and the kidneys appear pale and smaller than those of the wild-type littermates. In the earlier states, the kidneys show small immature glomeruli in the subcapsular region with enlarged glomeruli outside of this hypoplastic area. With age, the renal pathology develops into more severe states and results in end-stage renal disease [18–20]. In addition, gender differences in renal phenotype have been reported in COX-2-disrupted mice with a male propensity for kidney injury, increased baseline water turnover, and hypertension [21,22]. Taken together, it appears that the COX-2 isoform plays a more dominant role in the kidney diseases compared with COX-1.

PGE2 in the kidney

Although PG production occurs in all tissues, the kidney is a rich source, particularly with PGE₂ being the major renal PG metabolite. PGE₂ can be generated by all renal cells which are characterized by the presence of PGE₂ synthases—the enzyme

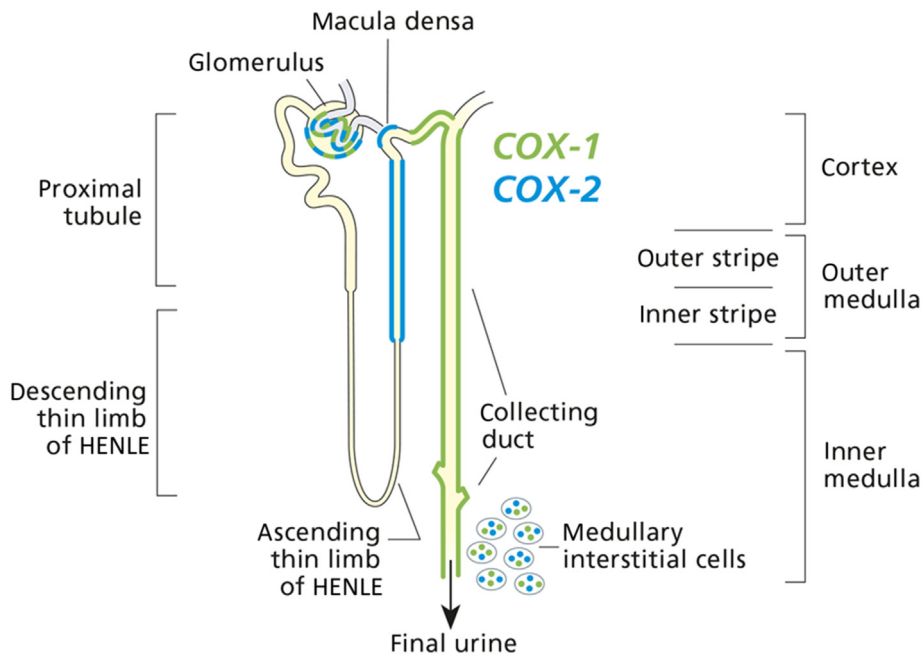


Figure 2. Distribution of COX isoforms throughout the nephron. COX-1 (green) is constitutively expressed in the glomerulus, collecting duct, and medullary interstitial cells. COX-2 (blue) is expressed in the glomerulus, macula densa, thick ascending limb, and medullary interstitial cells. COX, cyclooxygenase.

responsible for the production of PGE₂. At present, 3 distinct types of PGE₂ synthases have been identified in the kidney, including microsomal PGE synthase 1 (mPGES-1), mPGES-2, and cytosolic PGES (cPGES). The expression of mPGES-1 is inducible in response to physiological or pathophysiological stimuli and is the most abundant renal PGES form that has been considered to be functionally coupled to both COX-1 and COX-2 activity to increase the production of PGE₂ [23]. In contrast, mPGES-2 and cPGES expression is constitutive rather than regulatory, which suggests that these PGESs may be house-keeping genes involved in both early and late phases of PGE₂ production [23,24]. Furthermore, mice deficient in mPGES-1, but not in mPGES-2 or cPGES, suppress PGE₂ synthesis, indicating that mPGES-1 may represent an important renal pathway responsible for PGE₂ production [25–27]. In addition, studies have demonstrated reduced inflammatory response in mPGES-1-deficient mice, providing evidence that mPGES-1 plays a pivotal role in the production of PGE₂ linked to inflammation [28,29].

PGE₂ plays an important role in modulating the effect of vasopressin on the osmotic water reabsorption in the renal collecting duct cells where it attenuates antidiuretic action. This effect has been attributed to both inhibition of cAMP synthesis and elevation of cytosolic calcium (Ca²⁺) in rabbit cortical collecting ducts [30,31] and rat terminal inner medullary collecting ducts causing decreased trafficking of aquaporin 2 (AQP2) to the apical plasma membrane [32,33]. In addition, the signaling pathways underlying the diuretic effect of PGE₂ include the cAMP and Ca²⁺-independent activation of the Rho-kinase and formation of F-actin [34].

The involvement of PGE₂ in the regulation of body water metabolism was also demonstrated by the association between the urinary PGE₂ excretion and urine concentration [35,36]. In nephrogenic diabetes insipidus (NDI), patients have severe polyuria and urinary concentrating impairment in the presence of normal or high plasma levels of arginine vasopressin (AVP), and urinary excretion of PGE₂ is also increased [35,36]. In an animal study of lithium-induced NDI, the 24-hour urinary excretion of PGE₂ was also significantly increased [37]. These observations have led to the use of COX inhibitors to concentrate urine and decrease urine volume in NDI patients [38–40]. In contrast, urinary PGE₂ excretion is decreased in patients with central diabetes insipidus and can be increased by AVP treatment in parallel with increased urinary concentrating ability [36]. Similarly, PGE₂ concentration in kidney tissue

slices from congenitally AVP-deficient Brattleboro rats is low and can be increased in response to V2 receptor agonist 1-desamino-8-D-arginine vasopressin (dDAVP) treatment [41].

The biological actions of PGE₂ are exerted by the activation of 4 G-protein-coupled prostanoid receptors, designated EP1, EP2, EP3, and EP4 [42]. Through these receptors, PGE₂ plays a variety of renal physiological roles, including tubular water and sodium transport, glomerular filtration, as well as vascular resistance [43,44]. EP1 stimulates intracellular Ca²⁺ and contributes to the natriuretic and diuretic effects of PGE₂ [45,46] as well as plays an important role in regulation of the blood pressure [47]. The EP2 and EP4 receptors activate adenylate cyclase and increase cAMP production, whereas the EP3 receptor inhibits cAMP signaling [42]. EP2 and EP4 can increase water reabsorption via different intracellular signaling pathways [48], whereas EP3 decreases water permeability leading to increased water excretion [46]. PGE₂ or the EP1/3 agonist, sulprostone, decreases vasopressin-induced osmotic water permeability and AQP2 membrane trafficking without affecting cAMP levels or AQP2 phosphorylation at Ser256 (protein kinase A phosphorylation consensus site) [41,49]. In a recent review, Olesen and Fenton [50] provided a detailed information about the collecting duct water permeability, highlighting the action of PGE₂ and EP receptors. Although PGE₂ attenuates the AVP-mediated urine concentration, a number of unanswered questions still remain regarding the role of PGE₂ in body water homeostasis.

Pathophysiological conditions

COX-2 and PGE₂ has been demonstrated to play key roles in the pathophysiology of a variety of renal disorders (Table 1). This section focuses on 2 major renal diseases—namely obstructive nephropathy and acute kidney injury (AKI).

COX-2 and PGE₂ in obstructive nephropathy

Obstructive nephropathy is one of the most common kidney diseases, which may result in serious consequences for kidney function. Obstructive nephropathy is characterized by the impairment of most renal function. Initially, renal blood flow and glomerular filtration rate (GFR) are reduced, and in parallel, most tubular functions become impaired leading to severe reductions in the ability to handle sodium and water along the nephron. The molecular explanation for this is severe

Table 1. Regulation of COX-2 in response to renal disorders and drugs

Increased COX-2 expression	Decreased COX-2 expression
Obstructive nephropathy	Neuronal NOS inhibitor: macula densa COX-2
Acute kidney injury	Lithium nephrotoxicity: medullary interstitial cell COX-2
Renal transplantation	
Chronic kidney disease	
Hypertension	
Diabetes mellitus	
Lithium nephrotoxicity	
Renal artery stenosis	
Glomerular diseases	
Nephrotic syndrome	
Heymann and lupus nephritis	
Bartter's syndrome	
Loop diuretics	
Congestive heart failure	

COX, cyclooxygenase; NOS, nitric oxide synthase.

downregulation of almost all sodium transporters, cotransporters, and AQP water channels [51]. The consequences are the development of a severe urinary concentrating defect. In the more chronic phase of obstruction, renal tissue is characterized by progressive inflammation and development of tubulointerstitial fibrosis. There are numerous causes, including kidney stones, cancer of the prostate, and congenital malformations, contributing to the obstructive nephropathy [52].

The PG system is activated in response to obstructive nephropathy, and several studies have demonstrated that ureteral obstruction is associated with a marked induction of COX-2 and increased PGs and thromboxane synthesis [12,53–61]. Pharmacological intervention for the treatment of obstructive nephropathy has been focused on different approaches, including the hemodynamic dysregulation, altered water and salt handling, and the development of inflammation and tubulointerstitial fibrosis. The role of PGs and thromboxane in the dysregulation of hemodynamic parameters is complex as these lipid mediators are a mixture of both vasoconstrictors and vasodilators. Specific blocking of the vasoconstrictor thromboxane further attenuates the reduced GFR in response to obstructive nephropathy, but GFR is unchanged when PG production is nonselectively inhibited by the COX inhibitor indomethacin [62].

Several studies have investigated the role of PGs on altered water and salt handling in obstructive nephropathy. It has been described that pharmacological inhibition of COX-2 prevents increased PGE2 production as well as the downregulation of renal water channels and sodium transporters in response to acute bilateral ureteral obstruction [12,56]. In addition, we have demonstrated that disruption of COX-2 prevents downregulation of the expression of the water channel protein AQP2 and AQP3 in the cortex of the mice subjected to bilateral ureteral obstruction [54]. In the postobstructive kidney, COX-2 inhibition attenuates the downregulation of AQP2 and reduces polyuria acutely after the release of obstruction [55,60]. Thus, the data indicate that the increased COX-2–mediated PGE2 synthesis plays an important role for the dysregulation of renal AQPs and sodium transporters, which contributes to the impaired urinary concentrating capacity in response to obstructive nephropathy.

The PG system is similarly an important pharmacological target for the prevention of renal inflammation and fibrosis. Studies have shown that selective COX-2 inhibition ameliorates the progression of renal parenchymal damage and interstitial fibrosis caused by unilateral ureteral obstruction (UUO) [63,64]. In addition, we have inhibited COX-2 using a chitosan nanoparticle system delivering anti-COX-2 small interfering RNA (siRNA) that targets COX-2 in only macrophages. These particles have been administered by intraperitoneal injection, and the nature of the chitosan nanoparticles and the macrophage-rich environment in the peritoneum provide avid uptake into macrophages, and these macrophages are then recruited to the obstructed kidney. The results demonstrated that siRNA knockdown of COX-2 prevents or minimizes renal damage, inflammation, and apoptosis in a UUO model, placing RNA interference (RNAi) as a new potential therapeutic in COX-2 inhibition [58]. Likewise, it has recently been observed that antioxidants can inhibit the induction of COX-2 in renal medullary interstitial cells in response to UUO, suggesting that reactive oxygen species/oxidative stress might play a role in the regulation of the COX-2–mediated progression of renal damage and inflammation [57].

Finally, the PGE2/EP4 receptors have been revealed as potential pharmacological targets in obstructive nephropathy. EP4 receptor can affect injurious responses, and Nakagawa et al [65] have demonstrated that EP4 can also limit the progression of tubulointerstitial fibrosis by suppressing the inflammatory response in response to UUO.

COX-2 and PGE2 response in AKI

AKI represents an acute reduction in renal function and a change in the structure that can lead to increased morbidity and mortality in critically ill patients [66]. Previous studies demonstrated that experimental AKI induced by complete obstruction of the renal arteries followed by reperfusion in rats revealed structural alterations in renal tubule epithelia in association with impaired urinary concentrating ability and sodium excretion [67,68]. The impairment of urinary concentration was associated with significantly decreased expression of AQPs in the kidney collecting duct as well as in the proximal tubule [67]. Such an experimental model with complete renal artery occlusion followed by reperfusion only partly mimics AKI in human patients. More than 70% of AKI in humans is of circulatory nature and results from hypoxic injury to the kidney, including hypovolemia or hemorrhagic shock [69].

COX inhibitors, including both nonsteroidal anti-inflammatory drugs (NSAIDs) and selective COX-2 inhibitors, have been associated with an increased risk of AKI [70]. AKI could be complicated in the setting of NSAID therapy, particularly in the clinical situations of decreased effective circulating volume, including chronic kidney disease, congestive heart failure, and liver cirrhosis. Under these circumstances, a fall in effective circulating volume leads to activation of the renin–angiotensin and adrenergic nervous system, which results in renal vasoconstriction and impaired renal function. This will stimulate endogenous renal synthesis of vasodilatory PGs to antagonize the vasoconstriction and normalize renal perfusion and GFR. Therefore, an inhibition of these PG-dependent counterregulatory mechanisms will disrupt the balance between vasoconstriction and vasodilation and potentially give rise to AKI [71–73].

The application of NSAIDs or COX-2 inhibitors in patients with high-risk factors of AKI might be dependent on dose and duration of treatment, and drugs should be used with caution to reduce AKI occurrence. Huerta et al [70] demonstrated an increased risk of AKI with long-term therapy and high dose of NSAIDs compared with low-medium dose. Furthermore, they did not find a greater risk at the beginning of NSAID treatment. Therefore, is short-term and low-dose application of COX inhibitors associated with increased AKI incidence? In some forms of AKI, COX inhibitors have revealed beneficial roles in animal models. Studies have demonstrated that indomethacin, which is one of the most widely used NSAIDs in clinics, attenuates severe dysfunction as well as renal inflammation and fibrosis after ischemia/reperfusion (I/R)–induced AKI in rodents [74–78]. Furthermore, it has recently been shown that the protective effects of indomethacin are highly dose dependent in mice subjected to I/R injury [74]. Likewise, studies have reported that specific COX-2 blockade can minimize the progression of renal damage and oxidative stress in cisplatin- and I/R-induced AKI [77,79]. In addition, recent studies have shown that COX-2 inhibition can prevent oxidative injury in response to renal I/R in a dose-dependent manner [80,81]. In contrast, other studies have

revealed that suppression of COX-2 by pharmacological inhibitors or COX-2 knockout mice increases renal dysfunction and injury after renal I/R [82,83]. Ranganathan et al [84] also demonstrated that COX-2-mediated PGE2 production exacerbates I/R-induced injury via the EP4 receptor. The inconsistency between the various studies may be due to different experimental strategies such as different animal species and I/R models with different duration of ischemia or reperfusion time as well as selection of different COX-2 inhibitors. The results of COX-2 disruption could be different according to the different types of AKI, possibly due to the diversity of the pathogenic mechanisms. Taken together, the effects of NSAIDs or selective COX-2 inhibitors may be dependent on the various pathophysiological mechanisms and insults related to kidney disorders.

Conclusion

This review has provided evidence that the COX-2-derived PGs are implicated in a variety of physiological and pathophysiological processes in the kidney. During normal physiological conditions, PGs play important roles in the regulation of renal hemodynamic and homeostasis of body water and sodium balance. In addition, COX-2 and PGs are involved in different pathophysiological conditions, including obstructive nephropathy and AKI. The role of COX-2 and COX-2 inhibitors in numerous pathophysiological conditions still remains controversial as detrimental versus beneficial effects of COX-2 occur and may depend on the underlying pathophysiological conditions. This reveals a counterbalanced intrarenal handling of COX-2 highlighting the importance of the enzyme in renal physiology.

Conflicts of interest

All authors have no conflicts of interest to declare.

Acknowledgments

This study was supported by the Danish Research Council for Health and Disease (11-107433), the Lundbeck Foundation (R108-A10372), the Novo Nordisk Foundation (R121-A10440), Karen Elise Jensen Foundation (240513-MS/ks), the AP Moller Foundation (13-299), and the National Research Foundation of Korea (NRF) funded by the Ministry of Science, ICT and Future Planning, Korea (2013R1A1A2007266 and 2014R1A5A2009242).

References

- [1] Breyer MD, Harris RC: Cyclooxygenase 2 and the kidney. *Curr Opin Nephrol Hypertens* 10:89–98, 2001
- [2] Hao CM, Breyer MD: Physiological regulation of prostaglandins in the kidney. *Annu Rev Physiol* 70:357–377, 2008
- [3] Harris RC, Breyer MD: Physiological regulation of cyclooxygenase-2 in the kidney. *Am J Physiol Renal Physiol* 281:F1–F11, 2001
- [4] Crofford LJ: COX-1 and COX-2 tissue expression: implications and predictions. *J Rheumatol Suppl* 49:15–19, 1997
- [5] Dubois RN, Abramson SB, Crofford L, Gupta RA, Simon LS, van de Putte LB, Lipsky PE: Cyclooxygenase in biology and disease. *FASEB J* 12:1063–1073, 1998
- [6] Funk CD: Prostaglandins and leukotrienes: advances in eicosanoid biology. *Science* 294:1871–1875, 2001
- [7] Breyer RM, Bagdassarian CK, Myers SA, Breyer MD: Prostanoid receptors: subtypes and signaling. *Annu Rev Pharmacol Toxicol* 41:661–690, 2001
- [8] Campean V, Theilig F, Paliege A, Breyer M, Bachmann S: Key enzymes for renal prostaglandin synthesis: site-specific expression in rodent kidney (rat, mouse). *Am J Physiol Renal Physiol* 285:F19–F32, 2003
- [9] Smith WL, Bell TG: Immunohistochemical localization of the prostaglandin-forming cyclooxygenase in renal cortex. *Am J Physiol* 235:F451–F457, 1978
- [10] Komhoff M, Grone HJ, Klein T, Seyberth HW, Nusing RM: Localization of cyclooxygenase-1 and -2 in adult and fetal human kidney: implication for renal function. *Am J Physiol* 272:F460–F468, 1997
- [11] Therland KL, Stubbe J, Thiesson HC, Ottosen PD, Walter S, Sørensen GL, Skøtt O, Jensen BL: Cyclooxygenase-2 is expressed in vasculature of normal and ischemic adult human kidney and is colocalized with vascular prostaglandin E2 EP4 receptors. *J Am Soc Nephrol* 15:1189–1198, 2004
- [12] Nørregaard R, Jensen BL, Li C, Wang W, Knepper MA, Nielsen S, Frøkiær J: COX-2 inhibition prevents downregulation of key renal water and sodium transport proteins in response to bilateral ureteral obstruction. *Am J Physiol Renal Physiol* 289:F322–F333, 2005
- [13] Harris RC: Cyclooxygenase-2 in the kidney. *J Am Soc Nephrol* 11:2387–2394, 2000
- [14] Ferguson S, Hebert RL, Laneville O: NS-398 upregulates constitutive cyclooxygenase-2 expression in the M-1 cortical collecting duct cell line. *J Am Soc Nephrol* 10:2261–2271, 1999
- [15] Nantel F, Meadows E, Denis D, Connolly B, Metters KM, Gaiad A: Immunolocalization of cyclooxygenase-2 in the macula densa of human elderly. *FEBS Lett* 457:475–477, 1999
- [16] Fitzpatrick FA, Soberman R: Regulated formation of eicosanoids. *J Clin Invest* 107:1347–1351, 2001
- [17] Langenbach R, Morham SG, Tian HF, Loftin CD, Ghanayem BI, Chulada PC, Mahler JF, Lee CA, Goulding EH, Kluckman KD, Kim HS, Smithies O: Prostaglandin synthase 1 gene disruption in mice reduces arachidonic acid-induced inflammation and indomethacin-induced gastric ulceration. *Cell* 83:483–492, 1995
- [18] Morham SG, Langenbach R, Loftin CD, Tian HF, Vouloumanos N, Jennette JC, Mahler JF, Kluckman KD, Ledford A, Lee CA, Smithies O: Prostaglandin synthase 2 gene disruption causes severe renal pathology in the mouse. *Cell* 83:473–482, 1995
- [19] Dinchuk JE, Car BD, Focht RJ, Johnston JJ, Jaffee BD, Covington MB, Contel NR, Eng VM, Collins RJ, Czerniak PM: Renal abnormalities and an altered inflammatory response in mice lacking cyclooxygenase II. *Nature* 378:406–409, 1995
- [20] Norwood VF, Morham SG, Smithies O: Postnatal development and progression of renal dysplasia in cyclooxygenase-2 null mice. *Kidney Int* 58:2291–2300, 2000
- [21] Nørregaard R, Madsen K, Hansen PB, Bie P, Thavalingam S, Frøkiær J, Jensen BL: COX-2 disruption leads to increased central vasopressin stores and impaired urine concentrating ability in mice. *Am J Physiol Renal Physiol* 301:F1303–F1313, 2011
- [22] Yang T, Huang YG, Ye W, Hansen P, Schnermann JB, Briggs JP: Influence of genetic background and gender on hypertension and renal failure in COX-2-deficient mice. *Am J Physiol Renal Physiol* 288:F1125–F1132, 2005
- [23] Park JY, Pillinger MH, Abramson SB: Prostaglandin E2 synthesis and secretion: the role of PGE2 synthases. *Clin Immunol* 119:229–240, 2006
- [24] Yang G, Chen L, Zhang Y, Zhang X, Wu J, Li S, Wei M, Zhang Z, Breyer MD, Guan Y: Expression of mouse membrane-associated prostaglandin E2 synthase-2 (mPGES-2) along the urogenital tract. *Biochim Biophys Acta* 1761:1459–1468, 2006
- [25] Jia Z, Liu G, Downton M, Dong Z, Zhang A, Yang T: mPGES-1 deletion potentiates urine concentrating capability after water deprivation. *Am J Physiol Renal Physiol* 302:F1005–F1012, 2012
- [26] Jania LA, Chandrasekharan S, Backlund MG, Foley NA, Snouwaert J, Wang IM, Clark P, Audoly LP, Kolter BH: Microsomal prostaglandin

- E synthase-2 is not essential for *in vivo* prostaglandin E2 biosynthesis. *Prostaglandins Other Lipid Mediat* 88:73–81, 2009
- [27] Nakatani Y, Hokonohara Y, Kakuta S, Sudo K, Iwakura Y, Kudo I: Knockout mice lacking cPGES/p23, a constitutively expressed PGE2 synthetic enzyme, are peri-natally lethal. *Biochem Biophys Res Commun* 362:387–392, 2007
- [28] Kamei D, Yamakawa K, Takegoshi Y, Mikami-Nakanishi M, Nakatani Y, Oh-Ishi S, Yasui H, Azuma Y, Hirasawa N, Ohuchi K, Kawaguchi H, Ishikawa Y, Ishii T, Uematsu S, Akira S, Murakami M, Kudo I: Reduced pain hypersensitivity and inflammation in mice lacking microsomal prostaglandin e synthase-1. *J Biol Chem* 279:33684–33695, 2004
- [29] Trebino CE, Stock JL, Gibbons CP, Naiman BM, Wachtmann TS, Umland JP, Pandher K, Lapointe JM, Saha S, Roach ML, Carter D, Thomas NA, Durtschi BA, McNeish JD, Hambor JE, Jakobsson PJ, Carty TJ, Perez JR, Audoly LP: Impaired inflammatory and pain responses in mice lacking an inducible prostaglandin E synthase. *Proc Natl Acad Sci U S A* 100:9044–9049, 2003
- [30] Hebert RL, Jacobson HR, Breyer MD: PGE2 inhibits AVP-induced water flow in cortical collecting ducts by protein kinase C activation. *Am J Physiol* 259:F318–F325, 1990
- [31] Sonnenburg WK, Smith WL: Regulation of cyclic AMP metabolism in rabbit cortical collecting tubule cells by prostaglandins. *J Biol Chem* 263:6155–6160, 1988
- [32] Nadler SP, Zimpelmann JA, Hebert RL: PGE2 inhibits water permeability at a post-cAMP site in rat terminal inner medullary collecting duct. *Am J Physiol* 262:F229–F235, 1992
- [33] Zelenina M, Christensen BM, Palmer J, Nairn AC, Nielsen S, Aperia A: Prostaglandin E(2) interaction with AVP: effects on AQP2 phosphorylation and distribution. *Am J Physiol Renal Physiol* 278:F388–F394, 2000
- [34] Tamma G, Wiesner B, Furkert J, Hahm D, Oksche A, Schaefer M, Valenti G, Rosenthal W, Klussmann E: The prostaglandin E2 analogue sulprostone antagonizes vasopressin-induced anti-diuresis through activation of Rho. *J Cell Sci* 116:3285–3294, 2003
- [35] Sugawara M, Hashimoto K, Ota Z: Involvement of prostaglandin E2, cAMP, and vasopressin in lithium-induced polyuria. *Am J Physiol* 254:R863–R869, 1988
- [36] Moses AM, Scheinman SJ, Schroeder ET: Antidiuretic and PGE2 responses to AVP and dAVP in subjects with central and nephrogenic diabetes insipidus. *Am J Physiol* 248:F354–F359, 1985
- [37] Kotnik P, Nielsen J, Kwon TH, Krzysnik C, Frøkiær J, Nielsen S: Altered expression of COX-1, COX-2, and mPGES in rats with nephrogenic and central diabetes insipidus. *Am J Physiol Renal Physiol* 288:F1053–F1068, 2005
- [38] Libber S, Harrison H, Spector D: Treatment of nephrogenic diabetes insipidus with prostaglandin synthesis inhibitors. *J Pediatr* 108:305–311, 1986
- [39] Pattaragarn A, Alon US: Treatment of congenital nephrogenic diabetes insipidus by hydrochlorothiazide and cyclooxygenase-2 inhibitor. *Pediatr Nephrol* 18:1073–1076, 2003
- [40] Usberti M, Dechaux M, Guillot M, Seligmann R, Pavlovitch H, Loirat C, Sachs C, Broyer M: Renal prostaglandin E2 in nephrogenic diabetes insipidus: effects of inhibition of prostaglandin synthesis by indomethacin. *J Pediatr* 97:476–478, 1980
- [41] Jackson BA: Renal prostaglandin E2 synthesis in the Brattleboro homozygous diabetes insipidus rat. *Prostaglandins Leukot Med* 22:101–110, 1986
- [42] Breyer MD, Breyer RM: G protein-coupled prostanoid receptors and the kidney. *Annu Rev Physiol* 63:579–605, 2001
- [43] Breyer MD, Zhang Y, Guan YF, Hao CM, Hebert RL, Breyer RM: Regulation of renal function by prostaglandin E receptors. *Kidney Int Suppl* 67:S88–S94, 1998
- [44] Breyer MD, Breyer RM: Prostaglandin E receptors and the kidney. *Am J Physiol Renal Physiol* 279:F12–F23, 2000
- [45] Kennedy CR, Xiong H, Rahal S, Vanderluit J, Slack RS, Zhang Y, Guan Y, Breyer MD, Hebert RL: Urine concentrating defect in prostaglandin EP1-deficient mice. *Am J Physiol Renal Physiol* 292:F868–F875, 2007
- [46] Hebert RL, Jacobson HR, Fredin D, Breyer MD: Evidence that separate PGE2 receptors modulate water and sodium transport in rabbit cortical collecting duct. *Am J Physiol* 265:F643–F650, 1993
- [47] Stock JL, Shinjo K, Burkhardt J, Roach M, Taniguchi K, Ishikawa T, Kim HS, Flannery PJ, Coffman TM, McNeish JD, Audoly LP: The prostaglandin E2 EP1 receptor mediates pain perception and regulates blood pressure. *J Clin Invest* 107:325–331, 2001
- [48] Olesen ET, Rutzler MR, Moeller HB, Praetorius HA, Fenton RA: Vasopressin-independent targeting of aquaporin-2 by selective E-prostanoid receptor agonists alleviates nephrogenic diabetes insipidus. *Proc Natl Acad Sci USA* 108:12949–12954, 2011
- [49] Maeda Y, Terada Y, Nonoguchi H, Knepper MA: Hormone and autacoid regulation of cAMP production in rat IMCD subsegments. *Am J Physiol* 263:F319–F327, 1992
- [50] Olesen ET, Fenton RA: Is there a role for PGE2 in urinary concentration? *J Am Soc Nephrol* 24:169–178, 2013
- [51] Knepper MA, Kwon TH, Nielsen S: Molecular physiology of water balance. *N Engl J Med* 372:1349–1358, 2015
- [52] Klahr S: Obstructive nephropathy. *Intern Med* 39:355–361, 2000
- [53] Carlsen I, Donohue KE, Jensen AM, Selzer AL, Chen J, Poppas DP, Felsen D, Frøkiær J, Nørregaard R: Increased cyclooxygenase-2 expression and prostaglandin E2 production in pressurized renal medullary interstitial cells. *Am J Physiol Regul Integr Comp Physiol* 299:R823–R831, 2010
- [54] Nilsson L, Madsen K, Topcu SO, Jensen BL, Frøkiær J, Nørregaard R: Disruption of cyclooxygenase-2 prevents down-regulation of cortical AQP2 and AQP3 in response to bilateral ureteral obstruction in the mouse. *Am J Physiol Renal Physiol* 302:F1430–F1439, 2012
- [55] Nørregaard R, Jensen BL, Topcu SO, Diget M, Schweer H, Knepper MA, Nielsen S, Frøkiær J: COX-2 activity transiently contributes to increased water and NaCl excretion in the polyuric phase after release of ureteral obstruction. *Am J Physiol Renal Physiol* 292:F1322–F1333, 2007
- [56] Nørregaard R, Jensen BL, Topcu SO, Wang G, Schweer H, Nielsen S, Frøkiær J: Urinary tract obstruction induces transient accumulation of COX-2-derived prostanoids in kidney tissue. *Am J Physiol Regul Integr Comp Physiol* 298:R1017–R1025, 2010
- [57] Ostergaard M, Christensen M, Nilsson L, Carlsen I, Frøkiær J, Nørregaard R: ROS dependence of cyclooxygenase-2 induction in rats subjected to unilateral ureteral obstruction. *Am J Physiol Renal Physiol* 306:F259–F270, 2014
- [58] Yang C, Nilsson L, Cheema MU, Wang Y, Frøkiær J, Gao S, Kjems J, Nørregaard R: Chitosan/siRNA nanoparticles targeting cyclooxygenase type 2 attenuate unilateral ureteral obstruction-induced kidney injury in mice. *Theranostics* 5:110–123, 2015
- [59] Chou SY, Cai H, Pai D, Mansour M, Huynh P: Regional expression of cyclooxygenase isoforms in the rat kidney in complete unilateral ureteral obstruction. *J Urol* 170:1403–1408, 2003
- [60] Cheng X, Zhang H, Lee HL, Park JM: Cyclooxygenase-2 inhibitor preserves medullary aquaporin-2 expression and prevents polyuria after ureteral obstruction. *J Urol* 172:2387–2390, 2004
- [61] Whinnery MA, Shaw JO, Beck N: Thromboxane B2 and prostaglandin E2 in the rat kidney with unilateral ureteral obstruction. *Am J Physiol* 242:F220–F225, 1982
- [62] Yarger WE, Schocken DD, Harris RH: Obstructive nephropathy in the rat: possible roles for the renin-angiotensin system, prostaglandins, and thromboxanes in postobstructive renal function. *J Clin Invest* 65:400–412, 1980
- [63] Honma S, Shinohara M, Takahashi N, Nakamura K, Hamano S, Mitazaki S, Abe S, Yoshida M: Effect of cyclooxygenase (COX)-2 inhibition on mouse renal interstitial fibrosis. *Eur J Pharmacol* 740:578–583, 2014
- [64] Miyajima A, Ito K, Asano T, Seta K, Ueda A, Hayakawa M: Does cyclooxygenase-2 inhibitor prevent renal tissue damage in unilateral ureteral obstruction? *J Urol* 166:1124–1129, 2001

- [65] Nakagawa N, Yuhki K, Kawabe J, Fujino T, Takahata O, Kabara M, Abe K, Kojima F, Kashiwagi H, Hasebe N, Kikuchi K, Sugimoto Y, Narumiya S, Ushikubi F: The intrinsic prostaglandin E2-EP4 system of the renal tubular epithelium limits the development of tubulointerstitial fibrosis in mice. *Kidney Int* 82:158–171, 2012
- [66] Chertow GM, Burdick E, Honour M, Bonventre JV, Bates DW: Acute kidney injury, mortality, length of stay, and costs in hospitalized patients. *J Am Soc Nephrol* 16:3365–3370, 2005
- [67] Kwon TH, Frøkiær J, Fernandez-Llama P, Knepper MA, Nielsen S: Reduced abundance of aquaporins in rats with bilateral ischemia-induced acute renal failure: prevention by alpha-MSH. *Am J Physiol* 277:F413–F427, 1999
- [68] Kwon TH, Frøkiær J, Han JS, Knepper MA, Nielsen S: Decreased abundance of major Na(+) transporters in kidneys of rats with ischemia-induced acute renal failure. *Am J Physiol Renal Physiol* 278:F925–F939, 2000
- [69] Regel G, Grotz M, Weltner T, Sturm JA, Tscherne H: Pattern of organ failure following severe trauma. *World J Surg* 20:422–429, 1996
- [70] Huerta C, Castellsague J, Varas-Lorenzo C, Garcia Rodriguez LA: Nonsteroidal anti-inflammatory drugs and risk of ARF in the general population. *Am J Kidney Dis* 45:531–539, 2005
- [71] Brater DC: Renal effects of cyclooxygenase-2-selective inhibitors. *J Pain Symptom Manage* 23:S15–S20, 2002
- [72] Brater DC: Effects of nonsteroidal anti-inflammatory drugs on renal function: focus on cyclooxygenase-2-selective inhibition. *Am J Med* 107:65S–70S, 1999
- [73] Clive DM, Stoff JS: Renal syndromes associated with nonsteroidal antiinflammatory drugs. *N Engl J Med* 310:563–572, 1984
- [74] Zhu SH, Zhou LJ, Jiang H, Chen RJ, Lin C, Feng S, Jin J, Chen JH, Wu JY: Protective effect of indomethacin in renal ischemia-reperfusion injury in mice. *J Zhejiang Univ Sci B* 15:735–742, 2014
- [75] Feitoza CQ, Semedo P, Goncalves GM, Cenedeze MA, Pinheiro HS, Dos Santos OF, Landgraf RG, Pacheco-Silva A, Camara NO: Modulation of inflammatory response by selective inhibition of cyclooxygenase-1 and cyclooxygenase-2 in acute kidney injury. *Inflamm Res* 59:167–175, 2010
- [76] Feitoza CQ, Goncalves GM, Semedo P, Cenedeze MA, Pinheiro HS, Beraldo FC, Dos Santos OF, Teixeira VP, dos Reis MA, Mazzali M, Pacheco-Silva A, Camara NO: Inhibition of COX 1 and 2 prior to renal ischemia/reperfusion injury decreases the development of fibrosis. *Mol Med* 14:724–730, 2008
- [77] Feitoza CQ, Camara NO, Pinheiro HS, Goncalves GM, Cenedeze MA, Pacheco-Silva A, Santos OF: Cyclooxygenase 1 and/or 2 blockade ameliorates the renal tissue damage triggered by ischemia and reperfusion injury. *Int Immunopharmacol* 5:79–84, 2005
- [78] Feitoza CQ, Sanders H, Cenedeze M, Camara NO, Pacheco-Silva A: Pretreatment with indomethacin protects from acute renal failure following ischemia-reperfusion injury. *Transplant Proc* 34:2979–2980, 2002
- [79] Jia Z, Wang N, Aoyagi T, Wang H, Liu H, Yang T: Amelioration of cisplatin nephrotoxicity by genetic or pharmacologic blockade of prostaglandin synthesis. *Kidney Int* 79:77–88, 2011
- [80] Suleyman B, Albayrak A, Kurt N, Demirci E, Gundogdu C, Aksoy M: The effect of etoricoxib on kidney ischemia-reperfusion injury in rats: a biochemical and immunohistochemical assessment. *Int Immunopharmacol* 23:179–185, 2014
- [81] Suleyman Z, Sener E, Kurt N, Comez M, Yapanoglu T: The effect of nimesulide on oxidative damage inflicted by ischemia-reperfusion on the rat renal tissue. *Ren Fail* 37:323–331, 2015
- [82] Patel NS, Cuzzocrea S, Collino M, Chatterjee PK, Mazzon E, Britti D, Yaqoob MM, Thiemeermann C: The role of cyclooxygenase-2 in the rodent kidney following ischaemia/reperfusion injury in vivo. *Eur J Pharmacol* 562:148–154, 2007
- [83] Hwang HS, Yang KJ, Park KC, Choi HS, Kim SH, Hong SY, Jeon BH, Chang YK, Park CW, Kim SY, Lee SJ, Yang CW: Pretreatment with paricalcitol attenuates inflammation in ischemia-reperfusion injury via the up-regulation of cyclooxygenase-2 and prostaglandin E2. *Nephrol Dial Transplant* 28:1156–1166, 2013
- [84] Ranganathan PV, Jayakumar C, Mohamed R, Dong Z, Ramesh G: Netrin-1 regulates the inflammatory response of neutrophils and macrophages, and suppresses ischemic acute kidney injury by inhibiting COX-2-mediated PGE2 production. *Kidney Int* 83:1087–1098, 2013