

CORRECTION

Correction: Family Poverty Affects the Rate of Human Infant Brain Growth

Jamie L. Hanson, Nicole Hair, Dinggang G. Shen, Feng Shi, John H. Gilmore, Barbara L. Wolfe, Seth D. Pollak

In Figs [2](#), [3](#) and [4](#) of the published article the units of volume are incorrectly noted as cm^3 . The correct units are mm^3 .



OPEN ACCESS

Citation: Hanson JL, Hair N, Shen DG, Shi F, Gilmore JH, Wolfe BL, et al. (2015) Correction: Family Poverty Affects the Rate of Human Infant Brain Growth. PLoS ONE 10(12): e0146434. doi:10.1371/journal.pone.0146434

Published: December 30, 2015

Copyright: © 2015 Hanson et al. This is an open access article distributed under the terms of the [Creative Commons Attribution License](#), which permits unrestricted use, distribution, and reproduction in any medium, provided the original author and source are credited.

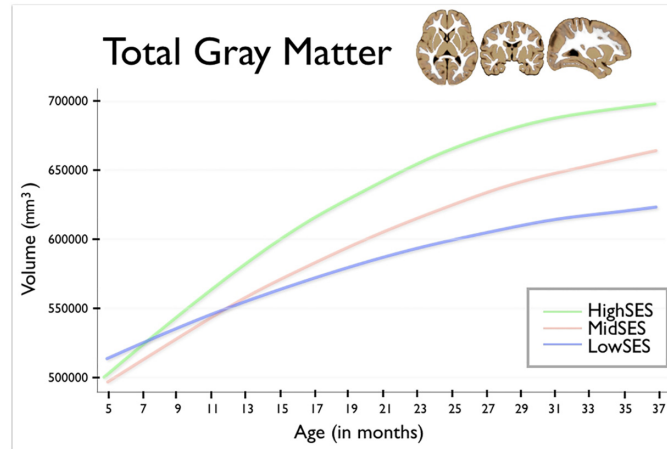


Fig 2. This figure shows total gray matter volume for group by age. Age in months is shown on the horizontal axis, spanning from 5 to 37 months. Total gray matter volume is shown on the vertical axis. The blue line shows children from Low SES households; children from Mid SES households are shown in red. The green line shows children from High SES households.

doi:10.1371/journal.pone.0146434.g001

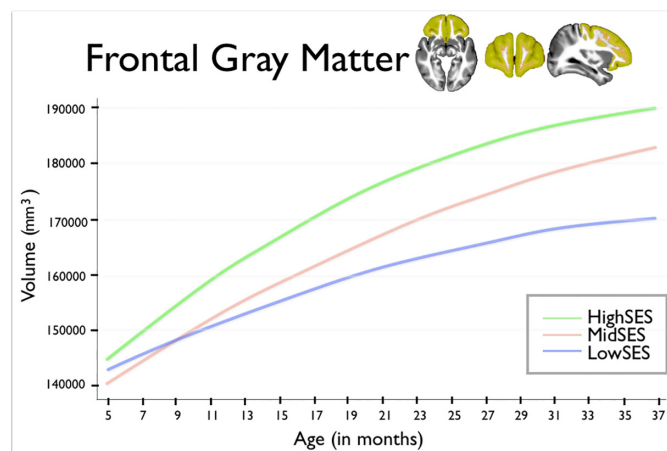


Fig 3. This figure shows frontal lobe gray matter volumes for group by age. Age in months is shown on the horizontal axis, spanning from 5 to 37 months. Total gray matter volume is shown on the vertical axis. The blue line shows children from Low SES households; children from Mid SES households are shown in red. The green line shows children from High SES households.

doi:10.1371/journal.pone.0146434.g002

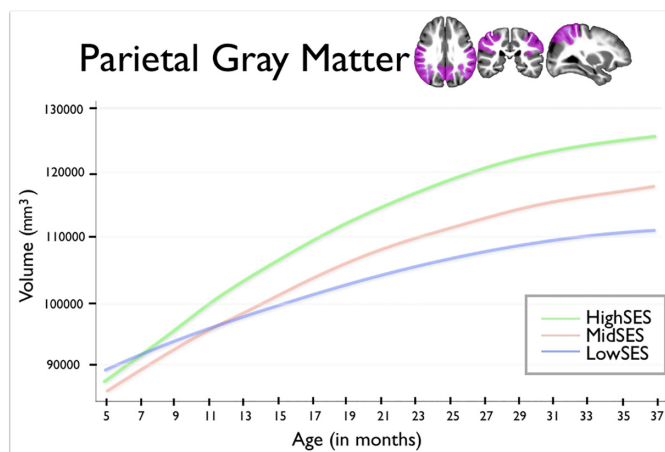


Fig 4. This figure shows parietal lobe gray matter volumes for group by age. Age in months is shown on the horizontal axis, spanning from 5 to 37 months. Total gray matter volume is shown on the vertical axis. The blue line shows children from Low SES households; children from Mid SES households are shown in red. The green line shows children from High SES households.

doi:10.1371/journal.pone.0146434.g003

Reference

1. Hanson JL, Hair N, Shen DG, Shi F, Gilmore JH, Wolfe BL, et al. (2013) Family Poverty Affects the Rate of Human Infant Brain Growth. PLoS ONE 8(12): e80954. doi: [10.1371/journal.pone.0080954](https://doi.org/10.1371/journal.pone.0080954) PMID: [24349025](https://pubmed.ncbi.nlm.nih.gov/24349025/)