

VOLUME 287 (2012) PAGES 4875–4882  
 DOI 10.1074/jbc.A111.318261

**BubR1 is modified by sumoylation during mitotic progression.**

Feikun Yang, Liyan Hu, Cheng Chen, Jianxiu Yu, Christopher B. O’Connell, Alexey Khodjakov, Michele Pagano, and Wei Dai

PAGE 4877:

Fig. 2A did not conform with the *JBC* policy that figures assembled from separate images should indicate the borders between the images. This figure has been corrected. This correction does not change the results or the conclusions of this work.

PAGE 4878:

Fig. 3C did not conform with the *JBC* policy that figures assembled from separate images should indicate the borders between the images. This figure has been corrected. This correction does not change the results or the conclusions of this work.

PAGE 4879:

Incorrect immunoblots were used in the vehicle and taxol plus caffeine (*T+C*) lanes of Fig. 5C. This error has been corrected. This correction does not change the results or the conclusions of this work.

PAGE 4881:

Fig. 7B did not conform with the *JBC* policy that figures assembled from separate images should indicate the borders between the images. This figure has been corrected. This correction does not change the results or the conclusions of this work.

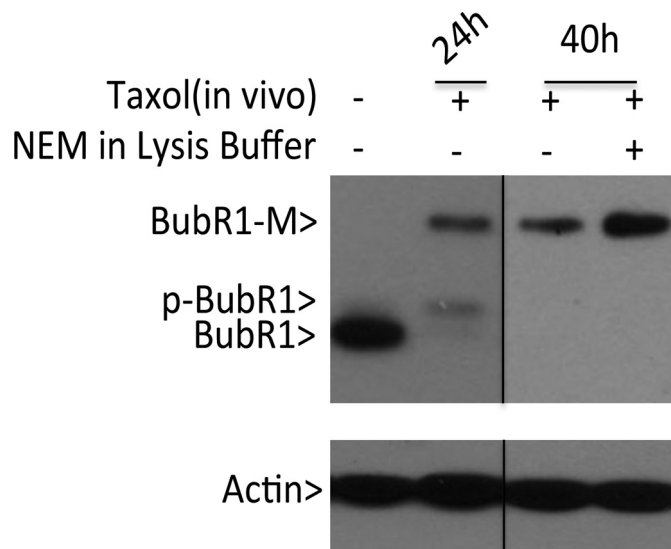


Fig. 3C

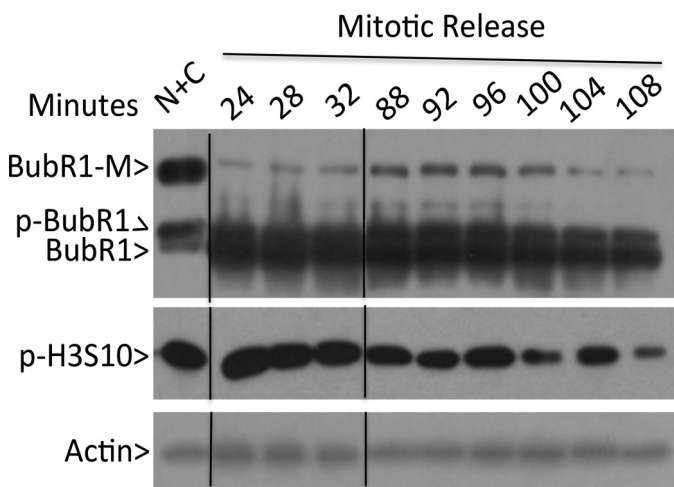


Fig. 2A

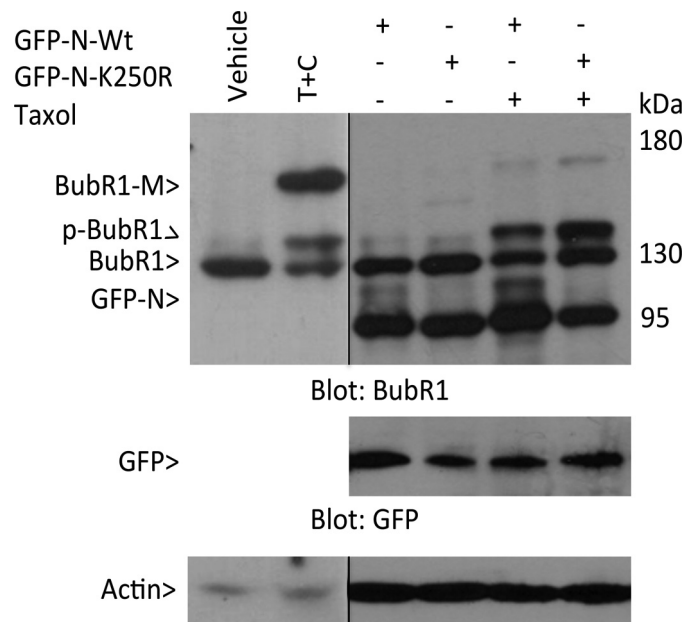


Fig. 5C

Authors are urged to introduce these corrections into any reprints they distribute. Secondary (abstract) services are urged to carry notice of these corrections as prominently as they carried the original abstracts.

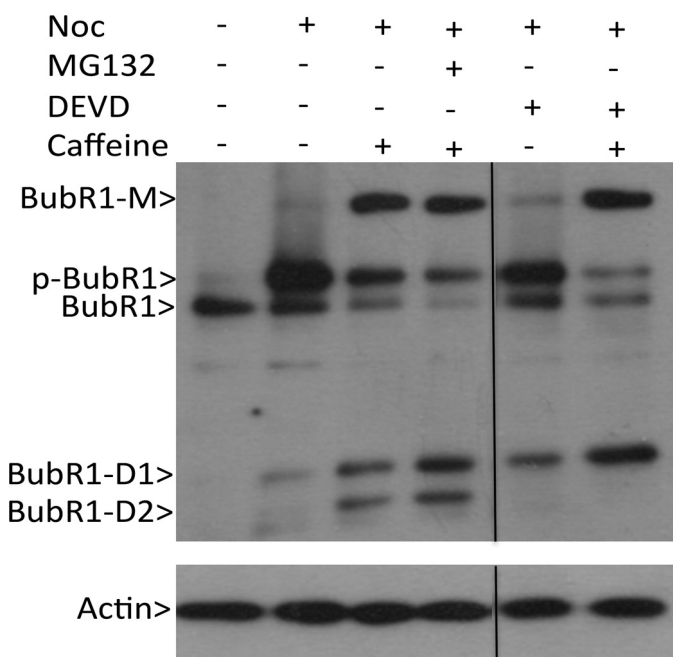


Fig. 7B