

# SCIENTIFIC REPORTS



OPEN

## Dihydroartemisinin prevents breast cancer-induced osteolysis via inhibiting both breast cancer cells and osteoclasts

Received: 18 August 2015  
Accepted: 30 November 2015  
Published: 08 January 2016

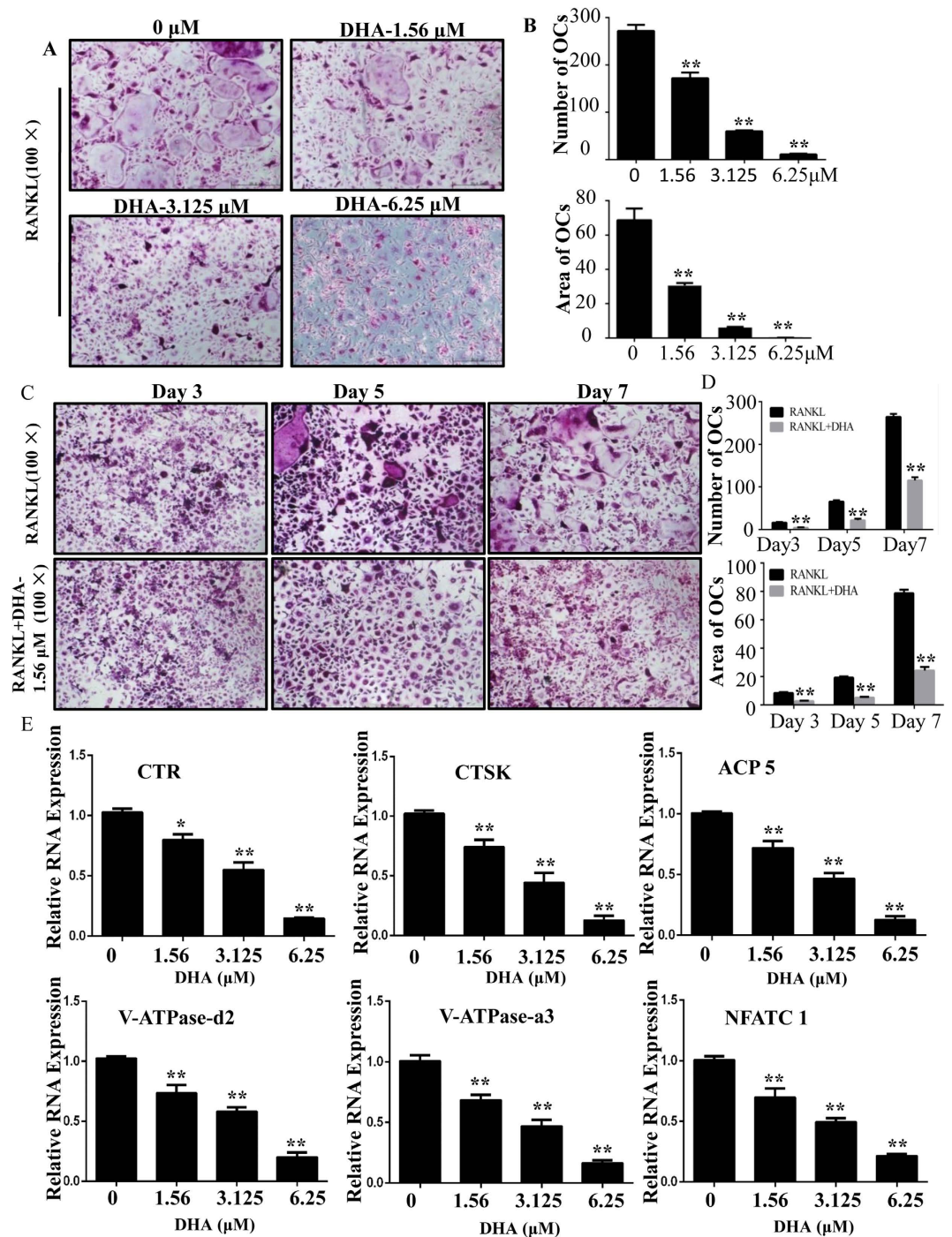
Ming-Xuan Feng<sup>1</sup>, Jian-Xin Hong<sup>1</sup>, Qiang Wang<sup>3</sup>, Yong-Yong Fan<sup>1</sup>, Chi-Ting Yuan<sup>1</sup>, Xin-Huan Lei<sup>1</sup>, Min Zhu<sup>1</sup>, An Qin<sup>2</sup>, Hai-Xiao Chen<sup>1</sup> & Dun Hong<sup>1</sup>

Bone is the most common site of distant relapse in breast cancer, leading to severe complications which dramatically affect the patients' quality of life. It is believed that the crosstalk between metastatic breast cancer cells and osteoclasts is critical for breast cancer-induced osteolysis. In this study, the effects of dihydroartemisinin (DHA) on osteoclast formation, bone resorption, osteoblast differentiation and mineralization were initially assessed *in vitro*, followed by further investigation in a titanium-particle-induced osteolysis model *in vivo*. Based on the proved inhibitory effect of DHA on osteolysis, DHA was further applied to MDA-MB-231 breast cancer-induced mouse osteolysis model, with the underlying molecular mechanisms further investigated. Here, we verified for the first time that DHA suppressed osteoclast differentiation, F-actin ring formation and bone resorption through suppressing AKT/SRC pathways, leading to the preventive effect of DHA on titanium-particle-induced osteolysis without affecting osteoblast function. More importantly, we demonstrated that DHA inhibited breast tumor-induced osteolysis through inhibiting the proliferation, migration and invasion of MDA-MB-231 cells via modulating AKT signaling pathway. In conclusion, DHA effectively inhibited osteoclastogenesis and prevented breast cancer-induced osteolysis.

Breast cancer is one of the most common cancers among women, with bone as the most vulnerable site of distant relapse<sup>1</sup>. The survival rate falls from 90% for localized breast cancer to 20% for metastatic breast cancer<sup>2</sup>. There is a complex interplay between metastatic breast cancer cells and bone cells, known as the "vicious cycle"<sup>3</sup>. Breast cancer cells can express receptor activator of NF- $\kappa$ B ligand (RANKL), parathyroid hormone-related protein (PTHrP) and interleukins to activate osteoclast directly and indirectly, leading to enhanced osteoclastic bone resorption, which in turn release active transforming growth factor- $\beta$  (TGF- $\beta$ ) and other cytokines to promote breast cancer growth<sup>3-5</sup>. Currently, bisphosphonate and denosumab have been proved to be effective in treatment of breast cancer-induced osteolysis<sup>6,7</sup>. However, these therapies are still associated with side effects<sup>8-12</sup>. For instance, bisphosphonates have been shown to increase the risk of osteonecrosis of the jaw in cancer patients<sup>3,13-16</sup>, suggesting that other alternative treatments should be considered<sup>17</sup>.

Natural plant-derived compounds have received great attention because they are considered to be attractive sources of therapeutic regimens. The herb artemisia, with artemisinin as active constituent, and its derivatives, ARTs, are extensively used as anti-malarial drugs without severe side effects<sup>18-21</sup>. Dihydroartemisinin (DHA), the main active metabolite of ARTs, has been proved as the most effective anti-cancer compound<sup>22</sup>. DHA is capable of mediating cell cycle arrest, inducing apoptosis, blocking angiogenesis, and inhibiting metastasis<sup>19,21,23-26</sup>. More interestingly, DHA selectively kills cancer cells with little effect on normal cells<sup>27,28</sup>. Recently, DHA was found to inhibit breast cancer cells and enhance doxorubicin (DOX)-induced apoptosis<sup>29</sup>. However, it remains unclear whether DHA can prevent breast cancer-induced osteolysis *in vivo*. The aim of this study was to assess the effect of DHA on osteoclastogenesis and breast cancer-induced osteolysis.

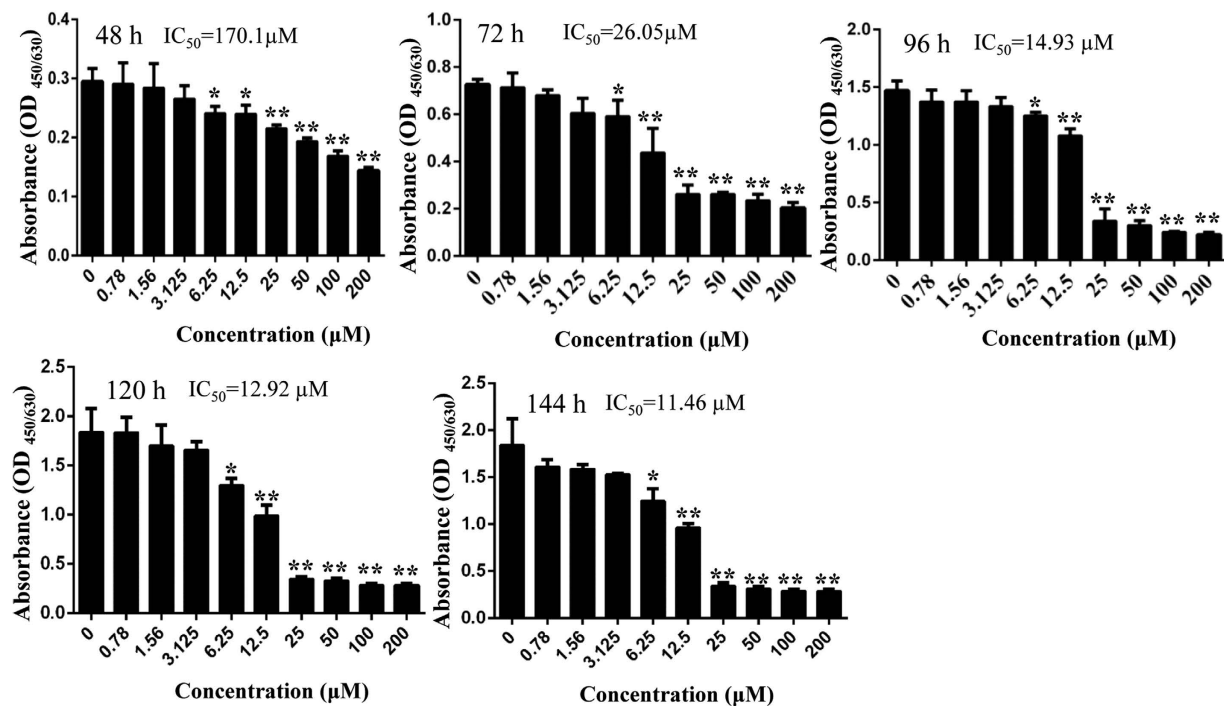
<sup>1</sup>Orthopaedic Department, Taizhou Hospital, Wenzhou Medical University, Linhai, 317000, China. <sup>2</sup>Orthopaedic Department, Shanghai Key Laboratory of Orthopaedic Implant, Shanghai Ninth People's Hospital, Shanghai Jiaotong University School of Medicine, Shanghai 200011, China. <sup>3</sup>Orthopaedic Department, Sir Run Run Shaw Hospital, Zhejiang University School of Medicine, Hangzhou, 310016, China. Correspondence and requests for materials should be addressed to H.-X.C. (email: Hxchen-1@163.net) or D.H. (email: hongdun@aliyun.com)



**Figure 1. DHA inhibited RANKL-induced osteoclastogenesis and gene expression.** (A) BMMs were treated with various concentrations of DHA, 30 ng/mL M-CSF and 50 ng/mL RANKL for 5–7 days and then subjected to TRAP staining. (B) The numbers and areas of osteoclasts from panel A were measured. (C) BMMs were treated with or without 1.56 μM DHA followed by 30 ng/mL M-CSF and 50 ng/mL RANKL for 3, 5, and 7 days and BMMs were subjected to TRAP staining. (D) The numbers and areas of osteoclasts from panel C were measured. (E) BMMs were cultured until mature osteoclasts were observed with different concentrations of DHA, 30 ng/mL M-CSF, and 50 ng/mL RANKL and then the osteoclast-specific gene expression was measured using real-time PCR. (\* $p < 0.05$ , \*\* $p < 0.01$ ).

## Results

**DHA inhibited RANKL-induced osteoclast differentiation and osteoclast-specific genes expression *in vitro*.** To investigate the effect of DHA on osteoclastogenesis, we treated primary bone marrow derived macrophages (BMMs) with RANKL and M-CSF in the absence or presence of DHA. As shown in Fig. 1A, BMMs



**Figure 2. DHA inhibited osteoclastogenesis without toxicity to BMMs.** BMMs were treated with indicated concentrations of DHA, 30 ng/mL M-CSF, and 50 ng/mL RANKL for 48 h, 72 h, 96 h, 120 h and 144 h, respectively, and cell viability was then measured using CCK-8 assay. The IC<sub>50</sub> for DHA in BMMs at 48 h, 72 h, 96 h, 120 h and 144 h were also calculated. (\*p < 0.05, \*\*p < 0.01).

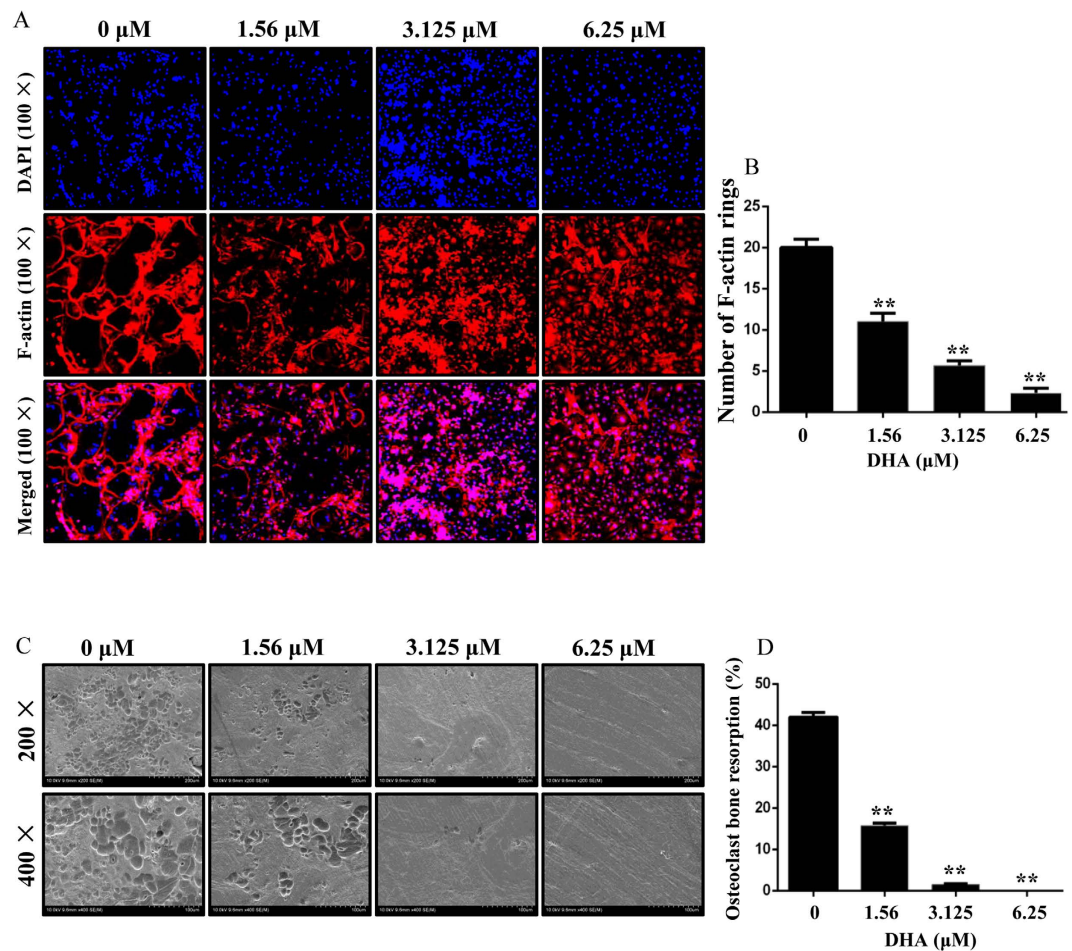
differentiated into mature TRAP-positive multinucleated osteoclasts in the control group. In contrast, the formation of TRAP-positive osteoclasts was significantly inhibited by DHA at various concentrations (Fig. 1A,B). The number of osteoclasts (TRAP-positive with more than three nuclei) was  $272.00 \pm 12.77$  per well in the control group and  $11.00 \pm 2$  per well after treatment with  $6.25 \mu\text{M}$  DHA. Osteoclasts were observed by TRAP staining at different time points, and osteoclast formation was significantly inhibited after 3 days of  $1.56 \mu\text{M}$  DHA treatment (Fig. 1C). The number and area of osteoclasts further supported the notion that DHA could inhibit early stage osteoclastogenesis (Fig. 1D).

Based on the fact that DHA exerts inhibitory effect on osteoclast formation and function, we further explored the underlying mechanisms by which DHA regulates osteoclast differentiation and resorption. Thus, the expression of osteoclastic-specific genes was examined. In response to RANKL stimulation, osteoclast-related genes, including cathepsin k (CTSK), CTR, ACP5, V-ATPase-d2, V-ATPase-a3, and NFATc1, were up-regulated in the control group. However, a general suppressive effect on gene expression was observed in the DHA-treated group. DHA suppressed osteoclastic gene expression in a dose-dependent manner (Fig. 1E).

**DHA inhibited osteoclastogenesis without toxicity to BMMs *in vitro*.** To exclude the possibility that the inhibitory effect of DHA on osteoclast formation was related to cytotoxic effect, cell viability assay was also performed. We demonstrated that cell viability was not affected by DHA at concentrations lower than  $6.25 \mu\text{M}$ , at which concentration osteoclastogenesis was significantly inhibited (Fig. 2). The calculated IC<sub>50</sub> for DHA in BMMs was  $170.1 \mu\text{M}$  at 48 h,  $26.05 \mu\text{M}$  at 72 h,  $14.93 \mu\text{M}$  at 96 h,  $12.92 \mu\text{M}$  at 120 h and  $11.46 \mu\text{M}$  at 144 h (Fig. 2). Together, these results demonstrate that DHA suppressed osteoclast differentiation without toxicity to BMMs.

**DHA inhibited osteoclast F-actin ring formation and bone resorption *in vitro*.** The formation of a well-polarized F-actin ring is necessary for osteoclastic bone resorption, we next tested the effect of DHA on F-actin ring formation. Characteristic F-actin ring formation was observed in the control group, as visualized by Phalloidin-Alexa Fluor 647 and DAPI staining (Fig. 3A). However, treatment with DHA resulted in drastic alterations in F-actin ring number and morphology. The number of F-actin rings was  $21.00 \pm 1$  per view in the control group,  $11.00 \pm 1$  per view after treatment with  $1.56 \mu\text{M}$  DHA,  $3.67 \pm 0.58$  per view after treatment with  $3.125 \mu\text{M}$  DHA, and  $1.33 \pm 0.58$  per view after treatment with  $6.25 \mu\text{M}$  DHA. (Figure 3B), suggesting that DHA impaired osteoclast F-actin ring formation *in vitro*.

Due to the inhibitory effect of DHA on osteoclast differentiation and F-actin ring formation, it is expected that osteoclastic bone resorption may be impaired by DHA treatment. Indeed, large bone resorption pits were observed in the control group while smaller and fewer resorption pits were observed in the DHA treated groups. The resorption area decreased to  $\sim 20\%$  and less than  $5\%$  after treatment with  $1.56$  and  $3.125 \mu\text{M}$  DHA,

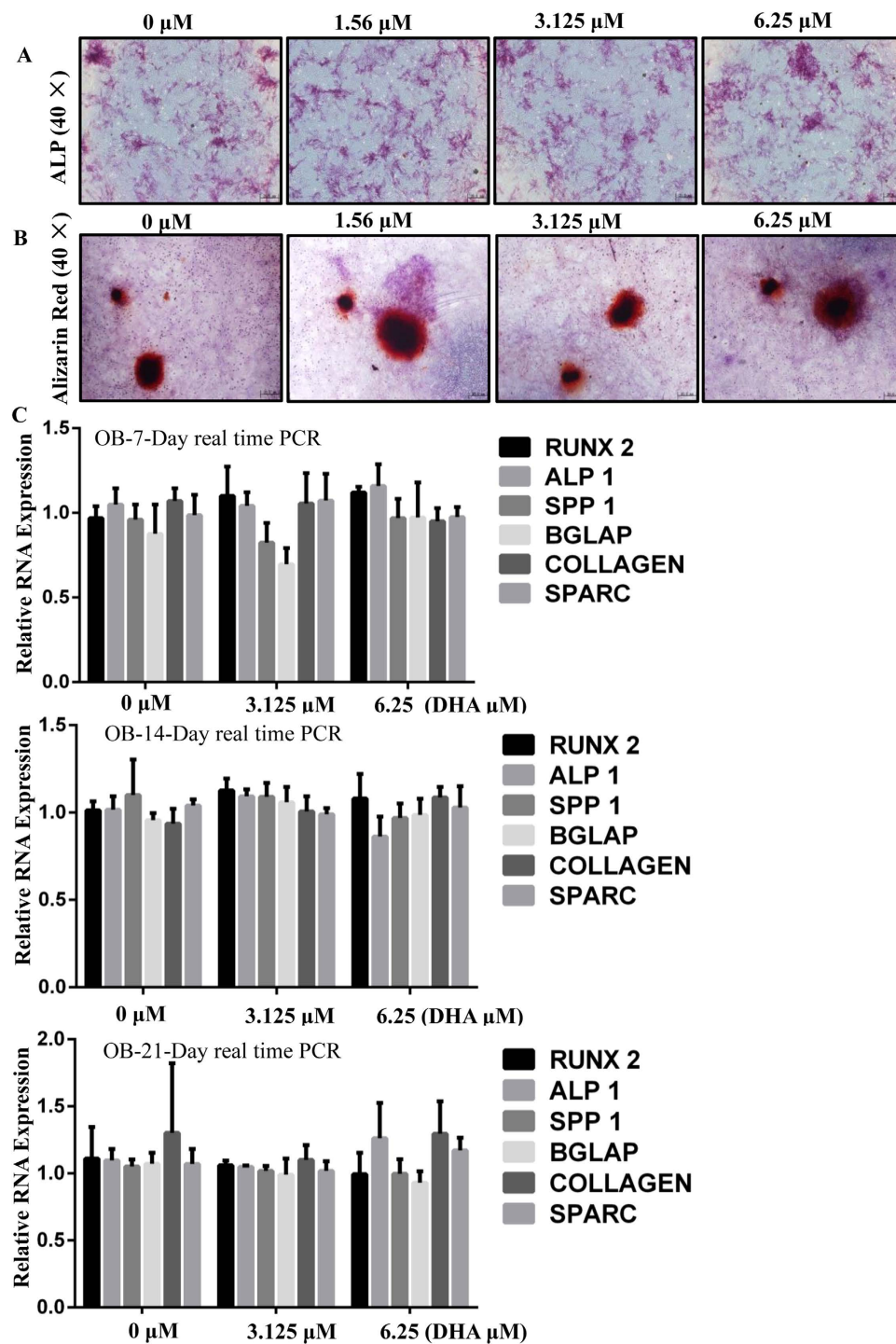


**Figure 3. DHA inhibited F-actin ring formation and osteoclastic bone resorption activity *in vitro*.** (A) BMMs were treated with different concentrations of DHA, 30 ng/mL M-CSF, and 50 ng/mL RANKL until osteoclasts formed. The F-actin rings and cell nuclei were stained with Alexa-Fluor 647 phalloidin and DAPI respectively and observed under a confocal microscope. (B) The number of intact F-actin rings was calculated. (C) BMMs were treated with different concentrations of DHA, 30 ng/mL M-CSF, and 50 ng/mL RANKL until mature osteoclasts formed and functioned. The images of bone resorption pits were shown by Scanning electron microscope (SEM). (D) Resorption pit areas were measured as mentioned in methods. (\* $p < 0.05$ , \*\* $p < 0.01$ ).

respectively. Almost no resorption pit was observed on the slices treated with 6.25 μM DHA (Fig. 3C,D). Together, these data indicate potential inhibitory effect of DHA on osteoclastic bone resorption.

**DHA does not affect osteoblast differentiation and osteoblastic-specific genes expression *in vitro*.** Although DHA impaired osteoclast formation, it is important to ask if DHA has any effect on osteoblasts. Therefore, Bone marrow derived mesenchymal stem cells (BMSCs) were isolated for osteoblastic differentiation and mineralization. Alkaline phosphatase (ALP) staining clearly showed no significant difference between control and DHA treated groups (Fig. 4A). In addition, alizarin red staining also demonstrated that the total mineralized area of each dish was similar between the control group and DHA treated group (Fig. 4B). We further explored the expression of osteoblastic-specific genes, including RUNX 2, COL, ALPL, Bglap, SPP1, and Sparc. The mRNA expression of osteoblast differentiation markers was not affected by DHA treatment with 3.125 and 6.25 μM DHA at 7 days, 14 days, and 21 days (Fig. 4C). These results suggest that DHA does not affect osteoblast differentiation and mineralization.

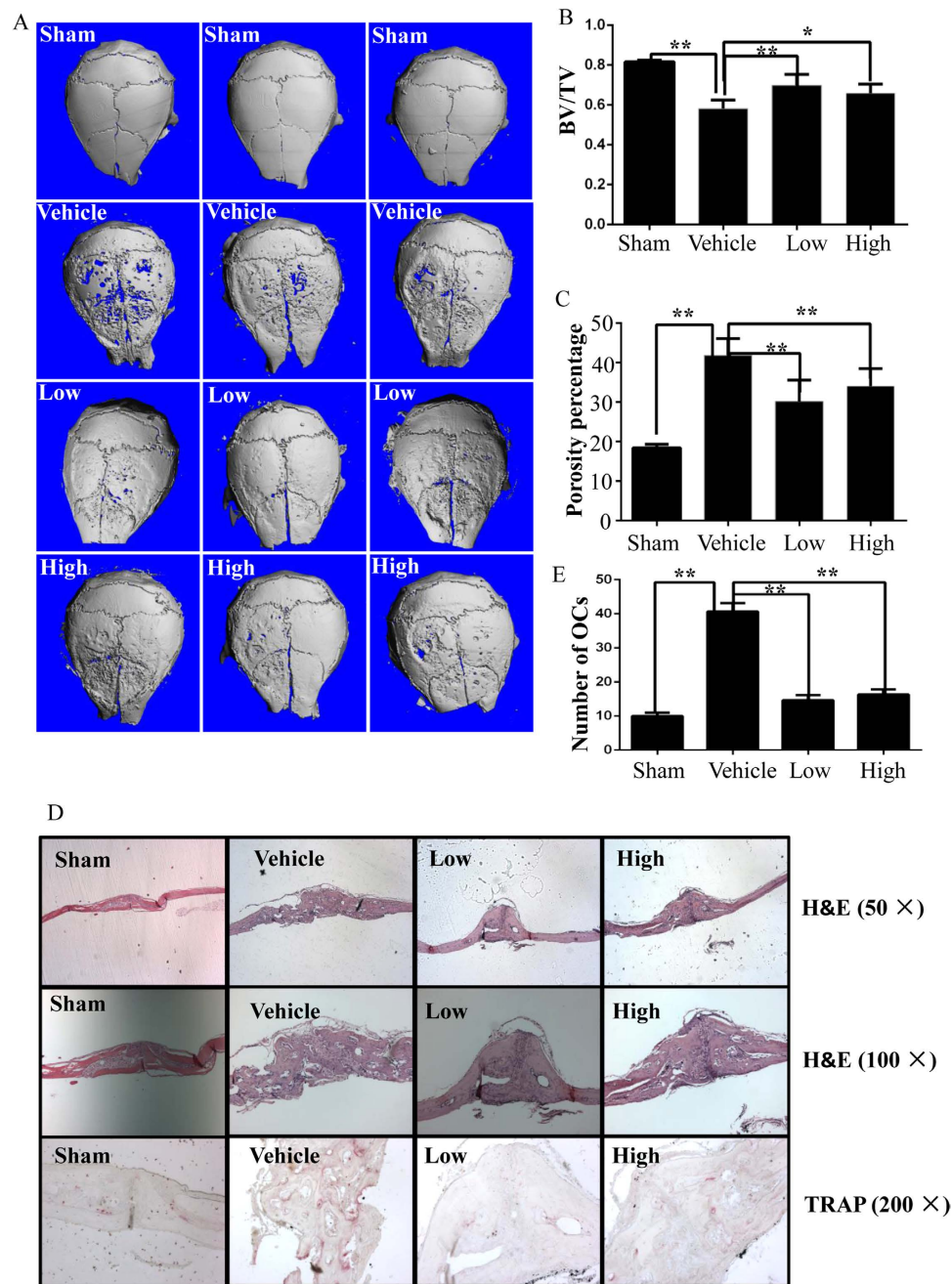
**DHA suppressed titanium-particle-induced osteolysis *in vivo*.** Given the fact that DHA impaired osteoclast formation but not osteoclast differentiation *in vitro*, it is important to investigate whether DHA is capable of prevent osteoclastic osteolysis *in vivo*. Thus, the effect of DHA on titanium-particle-induced osteolysis murine calvarial model was measured. We found that extensive bone resorption was observed in the vehicle group by micro-CT. In the groups with DHA treatment, reduced particle-induced osteolysis was observed (Fig. 5A). Bone volume against tissue volume (BV/TV) and the percentage of total porosity in the ROI were measured from three dimensional reconstruction images. When DHA was injected at 50 μg/kg and 100 μg/kg daily, osteolytic bone loss was prevented. The bone loss in vehicle group (BV/TV: 0.582 ± 0.042) was significantly



**Figure 4.** DHA does not affect osteoblast differentiation and gene expression *in vitro*. (A) BMSCs were cultured in differentiation medium with the various concentrations of DHA for 7 days and the Alkaline phosphatase (ALP) staining showed no significant difference between control and DHA treated groups. (B) BMSCs were cultured in differentiation medium with various concentrations of DHA for 21 days and Alizarin Red Staining demonstrated no significant difference between control and DHA treated group. (C) BMSCs were cultured in differentiation medium with various concentrations of DHA for 7, 14, or 21 days, respectively and the osteoblast-specific gene expression was analyzed by real-time PCR. (\* $p < 0.05$ , \*\* $p < 0.01$ ).

prevented after being treated with 50  $\mu\text{g}/\text{kg}$  of DHA (BV/TV:  $0.699 \pm 0.054$ ) and 100  $\mu\text{g}/\text{kg}$  of DHA (BV/TV:  $0.659 \pm 0.045$ ) (Fig. 5B,C).

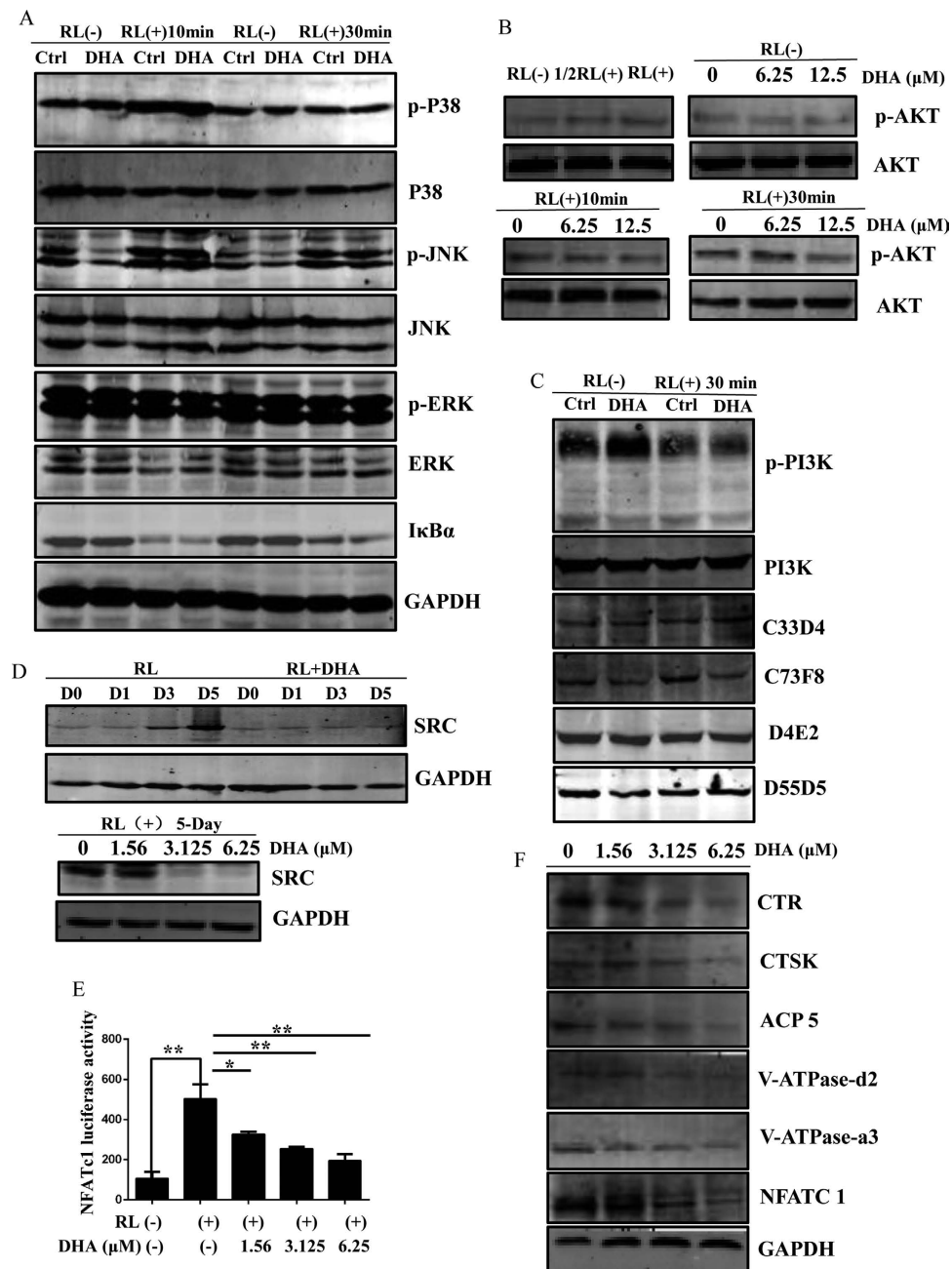
The histological and histomorphometric analysis further confirmed the protective effect of DHA on wear particle-induced bone erosion (Fig. 5D). Multinucleated osteoclasts as well as the inflammatory infiltration of



**Figure 5. DHA inhibited titanium-particle-induced murine calvarial osteolysis *in vivo*.** (A) Representative micro-CT and 3-dimensional reconstructed images from each group are shown. (B) The BV/TV of each sample was measured. (C) The percentage of total porosity of each sample was measured. (D) Calvarial sections were fixed, decalcified, dehydrated, and sectioned. Sections were stained with H&E and TRAP. (E) The number of osteoclasts per field of tissue (no. of OCs/field) was analyzed. (\* $p < 0.05$ , \*\* $p < 0.01$ ).

lymphocytes and macrophages were induced by the presence of Ti particles. TRAP staining revealed that multiple osteoclasts lined along the eroded bone surface in the vehicle group. The number of osteoclasts was reduced in the DHA treatment groups (Fig. 5E). This result indicates that DHA inhibited osteoclast formation and function *in vivo*.

**DHA suppressed AKT/SRC signaling pathways during osteoclastogenesis.** To explore the potential mechanisms on how DHA affects osteoclast formation, we initially investigated the role of DHA on critical signaling pathways during osteoclast formation. NF- $\kappa$ B signaling pathway is one of the key signaling pathways during osteoclast formation. Thus, we investigated I $\kappa$ B $\alpha$  activation. However, there is no suppressive effect of DHA on I $\kappa$ B $\alpha$  degradation (Fig. 6A), MAPK signaling pathways are also imperative for osteoclast differentiation. The phosphorylation of p38, Erk and JNK were further investigated. However, with the treatment of DHA,



**Figure 6. DHA specifically impaired AKT/SRC signaling pathways during osteoclastogenesis.**

(A) RAW264.7 cells were pretreated with or without 6.25 μM DHA for 4 h followed by 50 ng/mL RANKL for 0, 10 or 30 min respectively, and the cell lysates were analyzed using western blotting for MAPK and IκBα signaling pathways. (B) RAW264.7 cells were pretreated with various concentrations of DHA for 4 h followed by 50 ng/mL RANKL or different concentrations of RANKL for 0, 10 or 30 min respectively, and the cell lysates were analyzed using western blotting for AKT signaling pathway. (C) RAW264.7 cells were pretreated with or without 6.25 μM DHA for 4 h followed by 50 ng/mL RANKL for 0 or 30 min respectively, and the cell lysates were analyzed using western blotting for PI3K signaling pathway. (D) BMMs were cultured with or without 3.125 μM DHA, 30 ng/mL M-CSF, and 50 ng/mL RANKL for 0, 1, 3, or 5 days and the cell lysates were analyzed using western blotting for SRC signaling pathway. RAW264.7 cells were cultured with various concentrations of DHA followed by 50 ng/mL RANKL for 5 days and the cell lysates were analyzed using western blotting for SRC signaling pathway. (E) Luciferase cells were plated in 24-well plates and pretreated with 0, 1.56, 3.125, or 6.25 μM DHA for 1 h, and then incubated with 50 ng/mL RANKL for 24 h to activate NFATc1. Luciferase activity was detected using the Luciferase Assay Kit. (F) BMMs were cultured with various concentrations of DHA, 30 ng/mL M-CSF, and 50 ng/mL RANKL for for 5–7 days until osteoclasts formed and the cell lysates were analyzed using western blotting to detect the protein expression levels of CTSK, CTR, ACP5, V-ATPase-d2, V-ATPase-a3, NFATc1 and GAPDH (\*p < 0.05, \*\*p < 0.01).

there is no difference between the control and DHA treated groups, indicating no suppressive effect of DHA on these signaling pathways (Fig. 6A). In addition, PI3K-AKT signaling pathway is also important for osteoclast formation. Interestingly, we found that the phosphorylation of AKT was observed after stimulation with RANKL for 10 min and 30 min. In contrast, a significant suppressive effect of p-AKT was observed in the DHA-treated group after stimulation with RANKL for 30 min (Fig. 6B). Importantly, the activation of PI3K, the upper stream of AKT, was not affected by DHA treatment (Fig. 6C). Moreover, the increased expression of SRC during osteoclast differentiation was inhibited dramatically by DHA treatment at day 3 and day 5. The expression of SRC was significantly also inhibited in RAW264.7 cells by DHA treatment (Fig. 6D). Besides, NFATc1 luciferase activity was inhibited (Fig. 6E) and NFATc1 protein level was reduced in the DHA-treated group (Fig. 6F). Furthermore, we investigated the protein expression level of osteoclast specific gene, including CTSK, CTR, ACP5, V-ATPase-d2, V-ATPase-a3, and NFATc1. In agreement with the inhibitory effect on mRNA level, a general suppressive effect on osteoclast specific protein expression was observed in the DHA-treated group (Fig. 6F). Collectively, these data suggest that DHA may exert an inhibitory effect on AKT and SRC activation.

**DHA inhibits the proliferation, migration and invasion of MDA-MB-231 breast cancer cells *in vitro*.** Based on the evidence that DHA is a potential natural compound to prevent osteoclastic osteolysis, we further asked if DHA is active in preventing breast cancer-induced osteolysis. Thus, the effect of DHA on breast cancer cells was initially investigated. Following a 48 h and 96 h culture, a CCK-8 proliferation assay revealed that DHA can inhibit MDA-MB-231 cell proliferation with the calculated IC<sub>50</sub> of 74.26  $\mu$ M (48 h) and 53.4  $\mu$ M (96 h) respectively (Fig. 7A). Furthermore, DHA inhibits MDA-MB-231 cell migration in a concentration-dependent manner (Fig. 7B). DHA also inhibits MDA-MB-231 cell invasion in a concentration-dependent manner. The areas of MDA-MB-231 cells were 41.03  $\pm$  4.58%, 22.33  $\pm$  4.16%, 10.27  $\pm$  1.86%, 5.37  $\pm$  1.11% when treated with 0, 6.25, 12.5, 25  $\mu$ M DHA at 24 h. Quantitative analysis revealed that DHA can inhibit cell invasion at concentrations as low as 6.25  $\mu$ M (Fig. 7C,D). In addition, we noticed that DHA at 6.25, 12.5 or 25  $\mu$ M induced different degree of apoptosis, with about 16.78% of apoptotic cells at the concentration of 25  $\mu$ M (Fig. 7E). As we found DHA suppressed AKT phosphorylation during osteoclastogenesis, it is worth of checking whether DHA also modulate AKT signaling pathway in breast cancer cells. Upon 6 h and 12 h DHA treatment on breast cancer cells, the AKT phosphorylation was significantly inhibited (Fig. 7F,G). This result indicates that DHA inhibited AKT activation in MDA-MB-231 cells.

**DHA inhibits breast cancer bone metastasis and osteolysis *in vivo*.** To determine the effect of DHA on breast cancer-induced osteolysis *in vivo*, a mouse xenotransplant model was used. MDA-MB-231 cells were injected directly into the tibiae plateau via a percutaneous approach. After 28 days, the tissue volume, tissue length and tissue width were reduced in the DHA group compared with those in the vehicle group (Fig. 8A), indicating that DHA effectively suppressed breast cancer bone metastasis and growth *in vivo*. These observations were consistent with the results of the tumor volume assay (Fig. 8B–D). The tumor volume in vehicle group (355.98  $\pm$  44.22 mm<sup>3</sup>) was significantly higher than that in the DHA (100  $\mu$ g/kg) group (232.05  $\pm$  46.08 mm<sup>3</sup>). To confirm that osteolytic bone metastasis was inhibited by DHA, the osteolysis region in the long bones of the hind legs was examined using micro-CT (Fig. 8E). The BV/TV in vehicle group (0.111  $\pm$  0.009) was significantly lower in comparison with that in the sham group (0.389  $\pm$  0.034). In contrast, the BV/TV in the DHA (100  $\mu$ g/kg) group was 0.205  $\pm$  0.022 (Fig. 8F). In addition, the administration of DHA produced a higher trabecular number (Tb.N) and reduced trabecular separation (Tb.Sp) than the vehicle group (Fig. 8G,H). The apoptosis TUNEL assay was also performed. The levels of apoptosis were significantly increased in the DHA-treated group compared with the vehicle group (Fig. 8I). All *in vivo* data demonstrated that DHA inhibited MDA-MB-231 cancer cell-induced osteolysis.

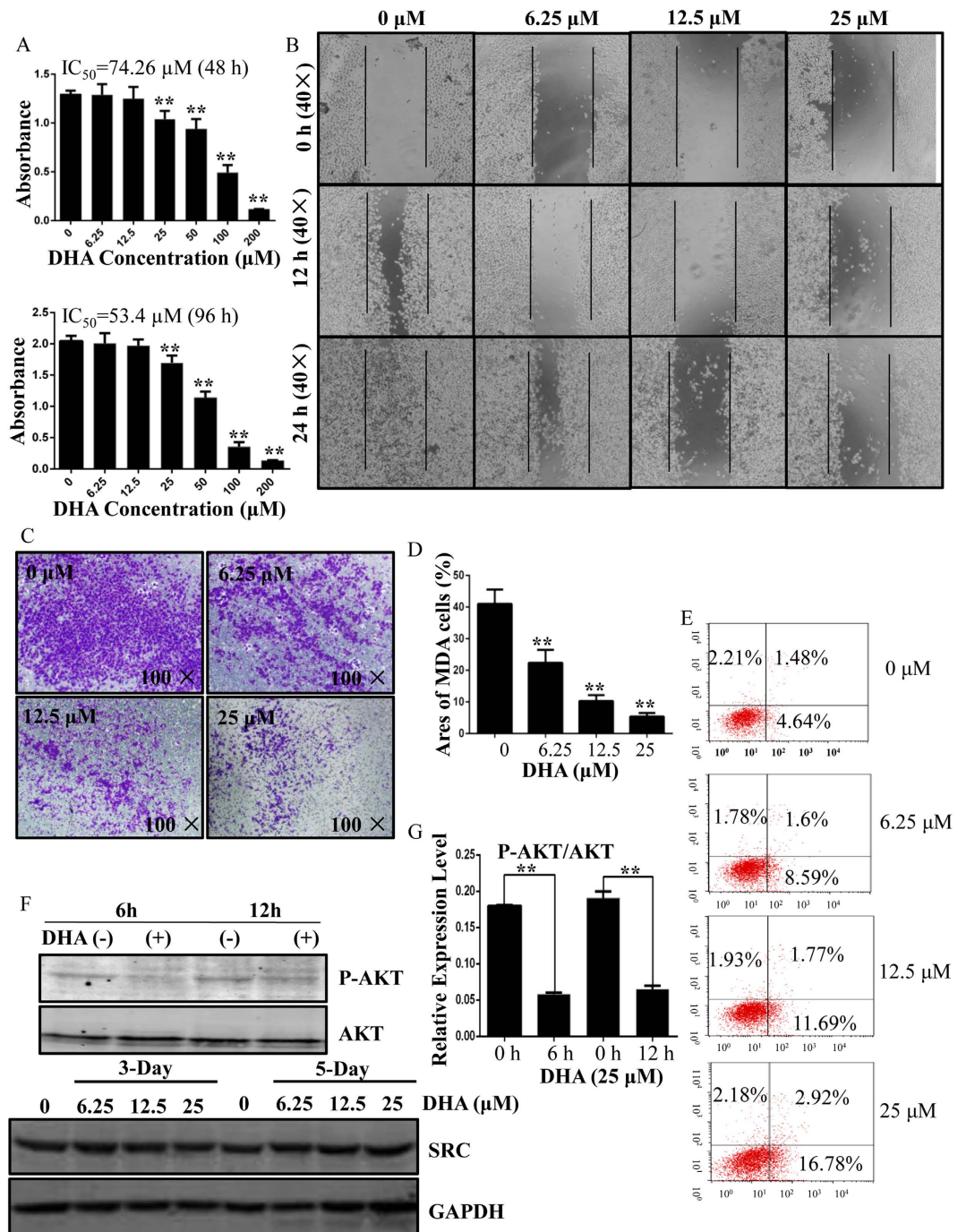
## Discussion

Bone metastasis is a critical complication in patients with advanced breast cancer, leading to severe pain, pathological fracture and hypercalcemia, all of which adversely affect the patients' quality of life and survival<sup>6,30–32</sup>. Although the molecular mechanism underlying the preferential metastasis of breast cancer to bone is yet to be elucidated, it is believed that the crosstalk between metastatic breast cancer cells and osteoclasts is critical for osteolysis<sup>3–5,33</sup>.

In this study, we have verified for the first time that DHA suppressed osteoclast differentiation in a dose-dependent manner without cytotoxic effect to BMMs, which was further supported by the fact that DHA suppressed osteoclastic specific gene and protein expression in a dose-dependent manner. We also demonstrated that the F-actin ring formation, a prerequisite for efficient bone resorption<sup>34</sup>, was significantly inhibited by DHA. Consequently, DHA impaired osteoclastic bone resorption in a dose-dependent manner. Based on the fact that DHA suppressed osteoclast formation and function *in vitro*, we further proved that DHA prevented wear particles induced osteolysis *in vivo*, supported by both reduced bone resorption area and reduced TRAP positive osteoclasts. Importantly, we also found that DHA does not affect osteoblast differentiation and osteoblast related gene expression, suggesting DHA is an attractive natural compound for osteolytic bone diseases.

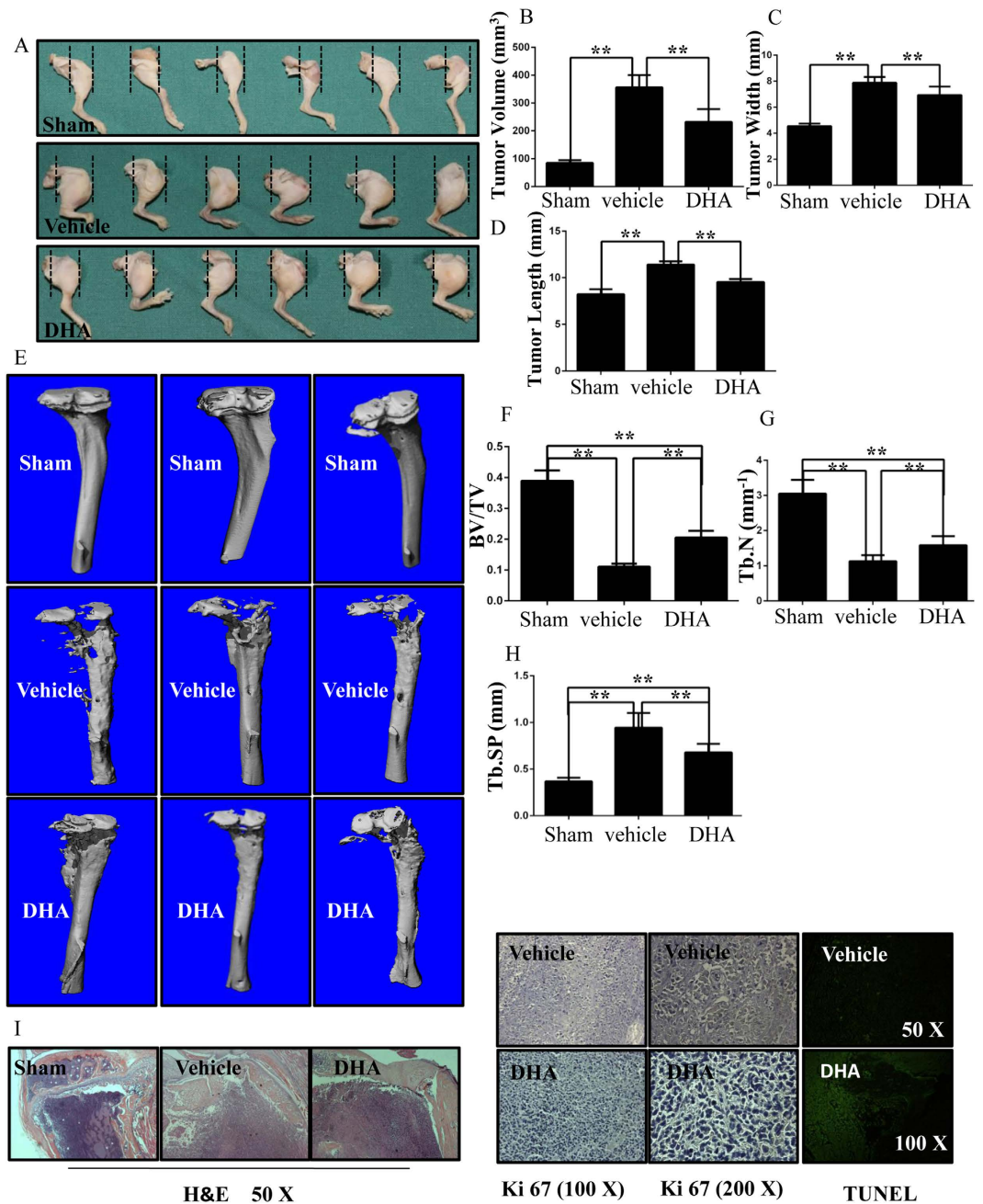
Recently, DHA was reported to inhibit breast cancer cells and enhance doxorubicin (DOX)-induced breast cancer cell apoptosis<sup>29</sup>. However, it remains unclear whether DHA can prevent breast cancer-induced osteolysis *in vivo*. Therefore, we further investigated the role of DHA on a breast cancer-induced osteolysis model. Interestingly, DHA suppressed tumor growth and protected breast cancer-induced osteolysis *in vivo*. On one hand, the suppressive effect is due to the inhibitory effect of DHA on the proliferation, migration and invasion of MDA-MB-231 cells. On the other hand, this effect may also due to the fact that DHA can inhibit osteoclastic bone resorption *in vivo*, supported by the preserved bone mass in the DHA treated groups.





**Figure 7. DHA inhibits the proliferation, migration, and invasion of MDA-MB-231 cells and promotes apoptosis.** (A) Viability of DHA-treated MDA-MB-231 cells. The calculated IC<sub>50</sub> was 74.26 μM (48 h) and 53.4 μM (96 h) respectively. (B) DHA inhibits monolayer wound healing of MDA-MB-231 cells. (C) Membrane-associated, crystal violet stained MDA-MB-231 breast cancer cells following treatment with various concentrations of DHA for 24 h. (D) The areas of invasive cells were counted. (E) Flow cytometric analysis of DHA-treated MDA-MB-231 cells. (F) DHA reduces phosphorylated AKT expression, but does not effect the expression of SRC. (G) The band intensity corresponding to phosphorylated AKT was quantified and normalized to GAPDH using Image J. (\*p < 0.05, \*\*p < 0.01).

Accumulative evidence shows that the PI3K/AKT pathway plays an important role in osteoclast differentiation<sup>35–37</sup>. In consistent with these findings, we also demonstrated that the inhibition of AKT signaling pathway by DHA can impair osteoclast formation and function. Interestingly, we found the activation of upper stream protein PI3K was not affected by DHA treatment, indicating AKT is a potential binding target of DHA. However, further experiments on the mode of action of DHA on AKT are still required. In osteoclasts, the sequential activation of PI3K and AKT is known to involve SRC proteins. The non-receptor tyrosine kinase SRC is an important molecule



**Figure 8.** DHA inhibits breast cancer bone metastasis and osteolysis *in vivo*. (A) MDA-MB-231 cells were injected directly into the tibiae plateau. After 28 days, the tissue volume (B), tissue width (C) and tissue length (D) were measured in the vehicle group. (E) Representative micro-CT and 3-dimensional reconstructed images from each group are shown. (F) The BV/TV of each sample was measured. (G) Trabecular number (Tb.N) of each sample was measured. (H) Trabecular separation (Tb.Sp) of each sample was measured. (I) The tumor volume sections were fixed, decalcified, dehydrated, and sectioned. Sections were stained with H&E, Ki67 and TUNEL. (\* $p < 0.05$ , \*\* $p < 0.01$ ).

in cell migration, adhesion, and osteoclast-mediated bone resorption<sup>38</sup>. Here in our study, we also demonstrated that the expression of SRC was inhibited in osteoclasts, suggesting DHA inhibits osteoclasts via modulating AKT/SRC signaling pathway. Furthermore, we also investigated the impact of DHA on NFATc1 which is one important downstream target of RANKL-induced osteoclastogenesis. As expected, the NFATc1 luciferase activity and the NFATc1 protein expression were significantly inhibited by DHA. Taken together, we showed that the mechanism of DHA-mediated inhibition was via the suppression of AKT/SRC signaling.

In breast cancer, PI3K/AKT/mTOR is the most frequently activated signaling pathway to promote tumor growth and progression<sup>39–41</sup>. Here, we also demonstrated that DHA can inhibit AKT activation, thus leading to inhibited proliferation and enhancing apoptosis in breast cancer cells. This finding suggests a universal mode of action of DHA is related to AKT activation. In conclusion, this study described a natural compound DHA can

effectively inhibit osteoclastogenesis and prevented breast cancer-induced bone osteolysis through the suppression of the AKT signaling cascade.

## Materials and Methods

Animal care and experiments were conducted in accordance with guidelines and procedures authorized by the Animal Experimental Ethical Committee of Taizhou Hospital, Wenzhou Medical University.

**Media and reagents.** DHA was purchased from Sigma-Aldrich (St Louis, MO, USA). The Alpha modification ( $\alpha$ -MEM), dulbecco's modified eagle medium (DMEM), fetal bovine serum (FBS), and penicillin/streptomycin were purchased from Gibco-BRL (Gaithersburg, MD, USA). The cell counting kit-8 (CCK-8) was obtained from Dojindo Molecular Technology (Tokyo, Japan). Soluble mouse macrophage colony-stimulating factor (M-CSF) and RANKL were obtained from R&D Systems (USA). The specific primary antibodies and secondary antibodies used in the experiments were obtained from Cell Signaling Technology (Cambridge, MA, USA) and Sigma-Aldrich (St Louis, MO, USA). The tartrate-resistant acid phosphatase (TRAP) staining kit, Triton X-100, and 4',6-diamidino-2'-phenylindole dihydrochloride (DAPI) were purchased from Sigma-Aldrich. The Vybrant® Apoptosis Assay kit #2 was from Invitrogen (Carlsbad, CA, USA).

**Cell culture.** BMMs were isolated from whole bone marrow of six-week-old female C57BL/6 mice as described previously<sup>42,43</sup>. In brief, cells were separated from the femoral and tibial bone marrow and incubated in a T75 flask in  $\alpha$ -MEM containing 10% FBS, 1% penicillin/streptomycin, and 30 ng/mL M-CSF for 24 h. Non-adherent cells were collected, reseeded in another T75 flask and incubated 5% CO<sub>2</sub> at 37 °C for another 3–4 days until the cells reached 90% confluence. RAW264.7 cells and MDA-MB-231 cells were cultured in DMEM with 10% FBS in a humidified atmosphere of 5% CO<sub>2</sub> at 37 °C. The complete medium was changed every other day. BMSCs were cultivated according to the method described by Moustafa Sayed<sup>44</sup>. To induce osteogenic differentiation, BMSCs were cultured in an osteogenic medium (DMEM supplemented with 10% fetal bovine serum, 50  $\mu$ g/mL ascorbic acid, 10 mM glycerophosphate, 100 nM dexamethasone and 1% penicillin/streptomycin).

**In vitro osteoclastogenesis assay.** After plating cells at a density of 8000 BMMs/well (in triplicate) into a 96-well plate and incubating for 24 h, BMMs were incubated in the presence of 30 ng/mL M-CSF, 50 ng/mL RANKL, and different concentrations of DHA (0, 1.56, 3.125, or 6.25  $\mu$ M). The cell culture medium was replaced every 2 days until mature osteoclasts had formed. The cells were washed twice with phosphate-buffered saline (PBS), fixed with 4% paraformaldehyde for 20 min, and stained using the TRAP kit. TRAP-positive cells with more than three nuclei were defined as osteoclasts and counted, and the percentage of osteoclasts per well was measured using Image-Pro Plus 6.0 software.

**RNA extraction and quantitative PCR assay.** Total RNA was extracted using the Qiagen RNeasy® Mini kit (Qiagen, Valencia, CA, USA), and then subjected to cDNA synthesis. Real-time PCR was performed using the SYBR Premix Ex Tag kit (TaKaRa, Biotechnology, Otsu, Japan) and an ABI 7500 Sequencing Detection System (Applied Biosystems, Foster City, CA, USA) according to the manufactures' protocols. The sequences for the relevant primers are listed in Table 1, GAPDH was used as a quantitative control gene and all reactions were run in triplicate.

**Western blotting.** BMMs were seeded at a density of  $2 \times 10^5$  BMMs/well in 6-well plates with or without 3.125  $\mu$ M DHA for 0, 1, 3, or 5 d during osteoclast induction and harvested to detect the protein expression of SRC. RAW264.7 cells were cultured to reach confluent and pretreated with or without 6.25  $\mu$ M DHA for 4 h, followed by stimulation with 50 ng/mL RANKL for 0, 10, or 30 min. Cells were lysed with RIPA buffer (Beyotime, Shanghai, China) to extract proteins. Protein concentrations were determined using a bicinchoninic acid (BCA, Thermo Fisher, Waltham, MA, USA) assay. Thirty micrograms of each protein lysate were resolved using SDS-PAGE and transferred to polyvinylidene difluoride membranes (Millipore, Bedford, MA, USA). The membranes were incubated with primary antibodies at 4 °C overnight and secondary antibodies for 1 h at room temperature. Antibody reactivity was detected by exposure in an Odyssey V3.0 image scanning (Li-COR, Inc., Lincoln, NE, USA). Quantitative analysis of the band intensity was analyzed using Image J.

**Luciferase reporter gene assay.** RAW264.7 cells were transfected with NFATc1 luciferase reporter constructs as described previously<sup>45,46</sup>. Briefly, cells were plated in 24-well plates at a density of  $1 \times 10^5$  cells/well in triplicate. After 24 h, the cells were pretreated with 0, 1.56, 3.125, or 6.25  $\mu$ M DHA for 1 h, and then incubated with 50 ng/mL RANKL for 24 h to activate NFATc1. Cells were then lysed with luciferase lysis buffer, luciferase activity was detected using the Luciferase Assay Kit (Promega, Madison, WI, USA).

**F-actin Ring Immunofluorescence.** The osteoclasts were fixed with 4% paraformaldehyde for 15 min at room temperature and permeabilized for 5 min with 0.1% v/v Triton X-100. The cells were then incubated with Alexa-Fluor 647 phalloidin (Invitrogen, San Diego, CA, USA) diluted in 0.2% (w/v) BSA-PBS (Invitrogen, San Diego, CA, USA) for 1 h at room temperature and washed with 0.2% w/v BSA-PBS and PBS, and DAPI was used for nuclei staining. The F-actin ring distribution was measured using the LSM5 confocal microscope (Carl Zeiss, Oberkochen, Germany). The fluorescence images were processed using the Zeiss ZEN software, and the number of intact F-actin rings was counted using Image J.

**Cell viability assay.** The cytotoxic effect of DHA on BMMs or MDA-MB-231 cells were assessed using CCK-8 assays according to manufacture's protocol. Briefly, BMMs in complete  $\alpha$ -MEM supplemented with 30 ng/mL M-CSF were seeded in 96-well plates at a density of  $8 \times 10^3$  cells/well, cultured for 24 h, and treated with

Gene	Primer sequences (5'-3')	
Cathepsin K	Forward	CTTCCAATACGTGCAGCAGA
	Reverse	TCTTCAGGGCTTCTCGTTC
CTR	Forward	TGCAGACAACCTTTGGTTGG
	Reverse	TCGGTTTCTTCTCTCTGGA
NFATc1	Forward	CCGTGCTTCCAGAAAATAACA
	Reverse	TGTGGGATGTGAACCTCGGAA
V-ATPase-d2	Forward	AAGCCTTTGTTTGACGCTGT
	Reverse	TTCGATGCCTCTGTGAGATG
V-ATPase-a3	Forward	AATCATGGACGACTCCTTGG
	Reverse	GGCCACCTCTTCACTCCGGAA
Acp 5	Forward	CACTCCCACCTGAGATTTGT
	Reverse	CCCCAGAGACATGATGAAGTCA
GAPDH	Forward	ACCCAGAAGACTGTGGATGG
	Reverse	CACATTGGGGGTAGGAACAC
RUNX 2	Forward	GCCTTCAAGGTTGTAGCCCT
	Reverse	GGACCGTCCACTGTCACTTT
COL 1	Forward	CCCAGCGGTGGTTATGACTT
	Reverse	TCGATCCAGTACTCTCCGCT
ALP 1	Forward	CGGACAATGAGATGCGCCC
	Reverse	AGACATAGTGGGAGTGTGTG
Bglap	Forward	ACAGACAAGTCCCACACAGC
	Reverse	CTGGGGCTCCAAGTCCATTG
SPP 1	Forward	AGCCAGCCAAGGACCAACTA
	Reverse	TCCATGTGGTCATGGCTTCA
Sparc	Forward	TCCTGCTGCTTGCTCTAAA
	Reverse	ACAGGTAACCTGTCTCCTC
GAPDH	Forward	TGGAGAAACCTGCCAAGTATGA
	Reverse	TCAGTATCCTTGCTGGGCTG

**Table 1. Sequences of primers used in real-time polymerase chain reaction (Real-time PCR).**

different concentrations of DHA for another 2, 3, 4, 5, or 6 days. MDA-MB-231 cells were cultured in 96-well plates in complete DMEM at a density of  $8 \times 10^3$  cells/well with increasing concentrations of DHA for 2 or 4 days. The cells were incubated with  $10 \mu\text{L}$  CCK-8 buffer in each well at  $37^\circ\text{C}$  for 2 h and the absorbance was measured at 450 nm (630 nm reference) on an ELX800 absorbance microplate reader (Bio-Tek, USA). Cell viability was calculated relative to that of the control cells from the optical density (OD) by using the following formula: Cell viability = (experimental group optimal density OD – zeroing OD)/(control group OD – zeroing OD).

**Transwell assay and wound healing assay.** In transwell assay, Transwell® Permeable Supports and 24-well chambers with  $8\text{-}\mu\text{m}$  pore polycarbonate filters were used as described by the manufacturer. MDA-MB-231 cells at a density of  $5 \times 10^4$  cells/well were placed in  $100 \mu\text{l}$  serum-free medium in the presence or absence of different concentrations of DHA with  $600 \mu\text{l}$  complete medium added into the lower wells and incubated at  $37^\circ\text{C}$  for 24 h. Following treatment, cells were fixed with 100% methanol for 20 min and stained with Trypan blue for 30 min. Non-migrating cells on the upper side of the filter were removed with cotton swabs. Migration was quantified by counting the area of cells on the lower surface of the filter.

In wound healing assay, a cell-based wound healing assay was performed following well-established methods<sup>47</sup>. Briefly, serum-starved MDA-MB-231 cells were grown to 90% confluence and a linear wound was created in the confluent monolayer using a  $200 \mu\text{L}$  micropipette tip. The cells were then washed with PBS to eliminate detached cells and diluted in serum-free DMEM. Then, various concentrations of DHA were added for 12 h and 24 h of incubation, and the wound edge closure was measured with a microscope.

**Apoptosis assay.** DHA induction of apoptosis in MDA-MB-231 cells was determined with the Vybrant® Apoptosis Assay kit #2. Following treatment, cells were washed twice with cold phosphate-buffered saline (PBS) and resuspended in 1X Annexin-binding buffer. Early apoptosis was detected via staining with Alexa Fluor® 488 Annexin V and propidium iodide. Fluorescence-activated cell sorting was performed using a FACScan™ flow cytometer and data were acquired using Cell Quest software, version 3.0 (BD Biosciences, Sunnyvale, CA, USA).

**Histological and immunohistochemical analysis.** The calvaria samples were decalcified in 10% EDTA for 3 weeks, and then embedded in paraffin. Histological sections were prepared for TRAP and H&E staining. The specimens were then examined and photographed under a high quality microscope. The number of TRAP-positive multinucleated osteoclasts was counted in each sample.

The hind limb tumor tissues were decalcified in 10% EDTA for 4 weeks. Decalcified bones were paraffin-embedded and sectioned. For histologic examination, sections were stained with hematoxylin and eosin (H&E). Immunostaining for Ki67 (Dako, Carpinteria, CA, USA) and terminal deoxynucleotidyl transferase-mediated dUTP nick-end labeling (TUNEL) were performed as previously described.

**In vitro bone absorption assay.** BMMs were seeded at a density of  $2.4 \times 10^4$  cells/cm<sup>2</sup> onto bovine bone slices (in triplicate), and treated with 30 ng/mL M-CSF, 50 ng/mL RANKL, and 0, 1.56, 3.125, or 6.25  $\mu$ M DHA until mature osteoclasts were formed. Adherent cells were then completely removed from the slices. Resorption pits were imaged using a scanning electron microscope (SEM, FEI Quanta 250; FEI, Hillsboro, OR, USA), and the bone resorption areas were quantified using Image J software.

**Titanium-particle-induced calvarial osteolysis mice model.** We established a mouse calvarial osteolysis model to measure the osteolysis-suppressing effect of DHA *in vivo*. The calvarial osteolysis mice model were developed as described previously<sup>48,49</sup>. Briefly, 24 healthy 8-week-old C57BL/6 mice were assigned randomly into four groups: sham PBS control (sham), Ti particles with PBS (vehicle), and Ti particles with low (50  $\mu$ g/kg/day) and high (100  $\mu$ g/kg/day) concentrations of DHA, respectively. After abdominal anesthesia by 3.5% chloral hydrate, 30 mg of Ti particles were embedded under the periosteum at the middle suture of the calvaria. Mice in the low and high DHA groups were injected intraperitoneally with DHA at 50 or 100  $\mu$ g/kg/day, respectively, for 10 days. Mice in the sham and vehicle groups received PBS daily. At the end of the experiment, the mice were sacrificed, and the calvaria of all mice were excised and fixed in 4% paraformaldehyde for micro-CT analysis.

**In vivo osteolytic bone metastasis assay.** The MDA-MB-231 cells were cultured to reach a final concentration of  $1 \times 10^6$ /mL and then inoculated directly into the tibiae plateau of BALB/c nu/nu mice (5–6 weeks old; female; Harlan) via a percutaneous approach. The mice were randomly assigned to 2 groups, treated with PBS (vehicle, n = 6) or DHA (100  $\mu$ g/kg body weight in vehicle, n = 6) by intraperitoneal injection every other day for 28 days before sacrifice. The tibiae of all mice were scanned and analyzed with a high-resolution micro-CT and the hind limb tumor tissues were proceeded with histologic examinations.

**Alkaline phosphatase (ALP) and Alizarin Red staining.** BMSCs were seeded on the 24-well chambers by using the same culture conditions as those described above with 0, 1.56, 3.125, or 6.25  $\mu$ M DHA. ALP and Alizarin Red staining was performed using a staining kit (Nanjing Jiancheng Chemical Industrial Co. Ltd., Nanjing, China) on days 7 and 21 of culture, respectively, according to the manufacturer's instructions.

**Statistical analysis.** The data were presented as mean  $\pm$  standard deviation (SD) from at least three independent experiments. The results were analyzed using SPSS 13.0 software (IBM Corp., Armonk, NY, USA). Analysis of variance (ANOVA) with Dunnett's post-hoc test was used for comparisons between the groups. The result of  $p < 0.05$  and  $p < 0.01$  indicated statistical significance between groups.

## References

- Coleman, R. E. & Rubens, R. D. The clinical course of bone metastases from breast cancer. *Br J Cancer* **55**, 61–66 (1987).
- Shi, M. *et al.* PinX1 inhibits the invasion and metastasis of human breast cancer via suppressing NF- $\kappa$ B/MMP-9 signaling pathway. *Mol Cancer* **14**, 66 (2015).
- Mundy, G. R. Metastasis to bone: causes, consequences and therapeutic opportunities. *Nat Rev Cancer* **2**, 584–593 (2002).
- Guise, T. A. *et al.* Basic mechanisms responsible for osteolytic and osteoblastic bone metastases. *Clin Cancer Res* **12**, 6213s–6216s (2006).
- Yoneda, T. & Hiraga, T. Crosstalk between cancer cells and bone microenvironment in bone metastasis. *Biochem Biophys Res Commun* **328**, 679–687 (2005).
- Costa, L. & Major, P. P. Effect of bisphosphonates on pain and quality of life in patients with bone metastases. *Nat Clin Pract Oncol* **6**, 163–174 (2009).
- Drooger, J. C., van der Padt, A., Sleijfer, S. & Jager, A. Denosumab in breast cancer treatment. *Eur J Pharmacol* **717**, 12–19 (2013).
- Body, J. J. Calcitonin for the long-term prevention and treatment of postmenopausal osteoporosis. *Bone* **30**, 75S–79S (2002).
- Haskell, S. G. Selective estrogen receptor modulators. *South Med J* **96**, 469–476 (2003).
- Rodan, G. A. & Martin, T. J. Therapeutic approaches to bone diseases. *Science* **289**, 1508–1514 (2000).
- Tremolieres, F. & Lopes, P. [Specific estrogen receptor modulators (SERMs)]. *Presse Med* **31**, 1323–1328 (2002).
- Watts, N. B. Bisphosphonate treatment of osteoporosis. *Clin Geriatr Med* **19**, 395–414 (2003).
- Suva, L. J., Washam, C., Nicholas, R. W. & Griffin, R. J. Bone metastasis: mechanisms and therapeutic opportunities. *Nat Rev Endocrinol* **7**, 208–218 (2011).
- Weilbaecher, K. N., Guise, T. A. & McCauley, L. K. Cancer to bone: a fatal attraction. *Nat Rev Cancer* **11**, 411–425 (2011).
- Roodman, G. D. Mechanisms of bone metastasis. *N Engl J Med* **350**, 1655–1664 (2004).
- Mariotti, A. Bisphosphonates and osteonecrosis of the jaws. *J Dent Educ* **72**, 919–929 (2008).
- Kamalakkar, A. *et al.* Circulating interleukin-8 levels explain breast cancer osteolysis in mice and humans. *Bone* **61**, 176–185 (2014).
- Efferth, T. *et al.* Molecular modes of action of artesunate in tumor cell lines. *Mol Pharmacol* **64**, 382–394 (2003).
- Lu, J. J. *et al.* Dihydroartemisinin induces apoptosis in HL-60 leukemia cells dependent of iron and p38 mitogen-activated protein kinase activation but independent of reactive oxygen species. *Cancer Biol Ther* **7**, 1017–1023 (2008).
- White, N. J. Qinghaosu (artemisinin): the price of success. *Science* **320**, 330–334 (2008).
- Tan, W. *et al.* Anti-cancer natural products isolated from chinese medicinal herbs. *Chin Med* **6**, 27 (2011).
- Kongpatanakul, S., Chatsiricharoenkul, S., Khuhapinant, A., Atipas, S. & Kaewkungwal, J. Comparative study of dihydroartemisinin and artesunate safety in healthy Thai volunteers. *Int J Clin Pharmacol Ther* **47**, 579–586 (2009).
- Chen, H. H., Zhou, H. J., Wang, W. Q. & Wu, G. D. Antimalarial dihydroartemisinin also inhibits angiogenesis. *Cancer Chemother Pharmacol* **53**, 423–432 (2004).
- Hwang, Y. P. *et al.* Suppression of PMA-induced tumor cell invasion by dihydroartemisinin via inhibition of PKC $\alpha$ /Raf/MAPKs and NF- $\kappa$ B/AP-1-dependent mechanisms. *Biochem Pharmacol* **79**, 1714–1726 (2010).
- Ba, Q. *et al.* Dihydroartemisinin exerts its anticancer activity through depleting cellular iron via transferrin receptor-1. *PLoS One* **7**, e42703 (2012).

26. Lu, J. J. *et al.* Dihydroartemisinin accelerates c-MYC oncoprotein degradation and induces apoptosis in c-MYC-overexpressing tumor cells. *Biochem Pharmacol* **80**, 22–30 (2010).
27. Hou, J., Wang, D., Zhang, R. & Wang, H. Experimental therapy of hepatoma with artemisinin and its derivatives: *in vitro* and *in vivo* activity, chemosensitization, and mechanisms of action. *Clin Cancer Res* **14**, 5519–5530 (2008).
28. Mercer, A. E. *et al.* Evidence for the involvement of carbon-centered radicals in the induction of apoptotic cell death by artemisinin compounds. *J Biol Chem* **282**, 9372–9382 (2007).
29. Wu, G. S. *et al.* Synergistic anti-cancer activity of the combination of dihydroartemisinin and doxorubicin in breast cancer cells. *Pharmacol Rep* **65**, 453–459 (2013).
30. Coleman, R. E., Smith, P. & Rubens, R. D. Clinical course and prognostic factors following bone recurrence from breast cancer. *Br J Cancer* **77**, 336–340 (1998).
31. Coleman, R. E. Skeletal complications of malignancy. *Cancer* **80**, 1588–1594 (1997).
32. Casimiro, S., Guise, T. A. & Chirgwin, J. The critical role of the bone microenvironment in cancer metastases. *Mol Cell Endocrinol* **310**, 71–81 (2009).
33. Park, B. K. *et al.* NF- $\kappa$ B in breast cancer cells promotes osteolytic bone metastasis by inducing osteoclastogenesis via GM-CSF. *Nat Med* **13**, 62–69 (2007).
34. Chellaiah, M. A. Regulation of actin ring formation by rho GTPases in osteoclasts. *J Biol Chem* **280**, 32930–32943 (2005).
35. Kawamura, N. *et al.* Akt1 in osteoblasts and osteoclasts controls bone remodeling. *PLoS One* **2**, e1058 (2007).
36. Cao, H. *et al.* Activating transcription factor 4 regulates osteoclast differentiation in mice. *J Clin Invest* **120**, 2755–2766 (2010).
37. Cao, H. *et al.* Critical role of AKT protein in myeloma-induced osteoclast formation and osteolysis. *J Biol Chem* **288**, 30399–30410 (2013).
38. Zhang, L. *et al.* c-Src expression is predictive of poor prognosis in breast cancer patients with bone metastasis, but not in patients with visceral metastasis. *APMIS* **120**, 549–557 (2012).
39. Miller, T. W., Rexer, B. N., Garrett, J. T. & Arteaga, C. L. Mutations in the phosphatidylinositol 3-kinase pathway: role in tumor progression and therapeutic implications in breast cancer. *Breast Cancer Res* **13**, 224 (2011).
40. Engelman, J. A. Targeting PI3K signalling in cancer: opportunities, challenges and limitations. *Nat Rev Cancer* **9**, 550–562 (2009).
41. Saal, L. H. *et al.* Poor prognosis in carcinoma is associated with a gene expression signature of aberrant PTEN tumor suppressor pathway activity. *Proc Natl Acad Sci USA* **104**, 7564–7569 (2007).
42. Koga, T. *et al.* Costimulatory signals mediated by the ITAM motif cooperate with RANKL for bone homeostasis. *Nature* **428**, 758–763 (2004).
43. Hu, J. P. *et al.* Berberine inhibits RANKL-induced osteoclast formation and survival through suppressing the NF- $\kappa$ B and Akt pathways. *Eur J Pharmacol* **580**, 70–79 (2008).
44. Sayed, M. *et al.* Effects of Na/K-ATPase and its ligands on bone marrow stromal cell differentiation. *Stem Cell Res* **13**, 12–23 (2014).
45. Wang, C. *et al.* 12-O-tetradecanoylphorbol-13-acetate (TPA) inhibits osteoclastogenesis by suppressing RANKL-induced NF- $\kappa$ B activation. *J Bone Miner Res* **18**, 2159–2168 (2003).
46. Kim, H. J. *et al.* Suppression of osteoclastogenesis by N,N-dimethyl-D-erythro-sphingosine: a sphingosine kinase inhibition-independent action. *Mol Pharmacol* **72**, 418–428 (2007).
47. Shrivastava, S., Jeengar, M. K., Reddy, V. S., Reddy, G. B. & Naidu, V. G. Anticancer effect of celastrol on human triple negative breast cancer: Possible involvement of oxidative stress, mitochondrial dysfunction, apoptosis and PI3K/Akt pathways. *Exp Mol Pathol* **98**, 313–327 (2015).
48. von Knoch, M. *et al.* The effectiveness of polyethylene versus titanium particles in inducing osteolysis *in vivo*. *J Orthop Res* **22**, 237–243 (2004).
49. Tian, B. *et al.* The prevention of titanium-particle-induced osteolysis by OA-14 through the suppression of the p38 signaling pathway and inhibition of osteoclastogenesis. *Biomaterials* **35**, 8937–8950 (2014).

## Acknowledgements

This work was supported by the National Natural Science Foundation of China (81171748) for Dr. Haixiao Chen, the Natural Science Foundation of Zhejiang Province for Dr. Dun Hong, China (Y2111236), the Zhejiang Scientific Project of Health and Medicine, China (2013KYA224) and scientific research grant from the National Natural Science Foundation (81201364&81328015), Scientific Research Grants for Dr. An Qin (ZZjdyx2097&13YZ031), Scientific Research Grant from Shanghai Pujiang programme (14PJ1406200) and Scientific Research Grants from 985 project-stem cell and regenerative medicine centre and SMC-Chenxing Yong scholar in SJTU.

## Author Contributions

D.H. and H.-X.C. designed most of the the experiments. M.-X.F., Q.W., X.-H.L. and J.-X.H. preformed animals' surgery. M.-X.F., J.-X.H., C.-T.Y. and Y.-Y.F. carried out the cell experiments. M.Z. and A.Q. helped design the experiments. M.-X.F., A.Q. and D.H. analyzed the data. M.-X.F. wrote the paper. All authors approved the final manuscript for publication.

## Additional Information

**Competing financial interests:** The authors declare no competing financial interests.

**How to cite this article:** Feng, M.-X. *et al.* Dihydroartemisinin prevents breast cancer-induced osteolysis via inhibiting both breast cancer cells and osteoclasts. *Sci. Rep.* **6**, 19074; doi: 10.1038/srep19074 (2016).



This work is licensed under a Creative Commons Attribution 4.0 International License. The images or other third party material in this article are included in the article's Creative Commons license, unless indicated otherwise in the credit line; if the material is not included under the Creative Commons license, users will need to obtain permission from the license holder to reproduce the material. To view a copy of this license, visit <http://creativecommons.org/licenses/by/4.0/>