

VOLUME 290 (2015) PAGES 23050–23063  
 DOI 10.1074/jbc.A115.650028

**Hierarchical autophagic divergence of hematopoietic system.**

Yan Cao, Suping Zhang, Na Yuan, Jian Wang, Xin Li, Fei Xu, Weiwei Lin, Lin Song, Yixuan Fang, Zhijian Wang, Zhen Wang, Han Zhang, Yi Zhang, Wenli Zhao, Shaoyan Hu, Xueguang Zhang, and Jianrong Wang

PAGE 23054:

Immunoblots from bone marrow cells and not from bone marrow Lin<sup>-</sup> cells were used in Fig. 2C. These experiments have been reperformed using isolated bone marrow Lin<sup>-</sup> cells from the indicated mice. The corrected figure is shown below. These errors do not affect the results or the conclusions of this work.

There was an error in the calculation and statistical analysis of Fig. 2H. These errors have been corrected by reanalyzing the same original data. The corrected Fig. 2H shows no significant difference ( $p = 0.180368$ , not significant) between WT and KO groups without M-CSF treatment (physiological conditions), whereas a statistically significant difference ( $p = 0.000201$ , double asterisks) remains between WT and KO groups with M-CSF treatment (artificial conditions). Thus, as evident by the corrected Fig. 2H, differentiation in the Atg7-deficient myeloid cells was partially crippled only when treated with M-CSF. Therefore, although this error caused an inaccurate result, our contention in the paper remains valid: “ATG7-dependent autophagic defect in myeloid cells cripples artificial but not physiologic induction of monocyte-macrophage differentiation.”

PAGE 23058:

There was an error in the calculation and statistical analysis in Fig. 4A. The original data have been reanalyzed, and the corrected figure is now shown. These errors do not affect the results or the conclusions of this work.

The incorrect GAPDH immunoblot was used to assemble Fig. 4E. The corrected figure is now shown. This error does not affect the results or the conclusions of this work.

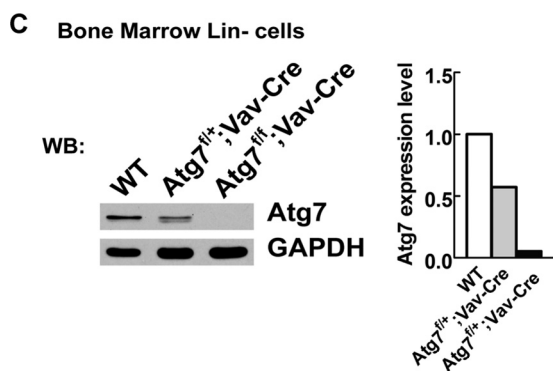


Fig. 2C

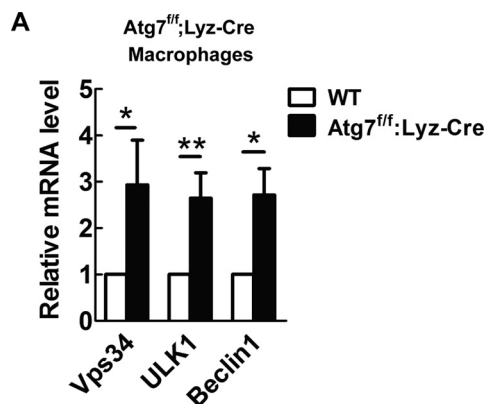


Fig. 4A

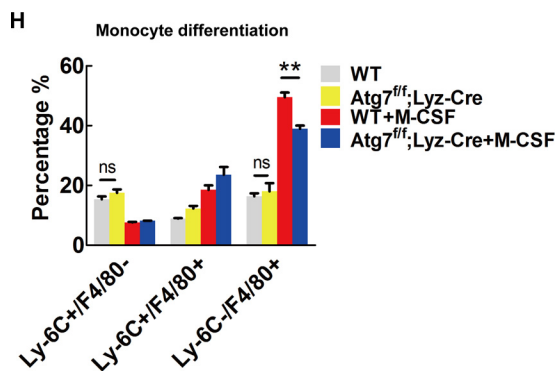


Fig. 2H

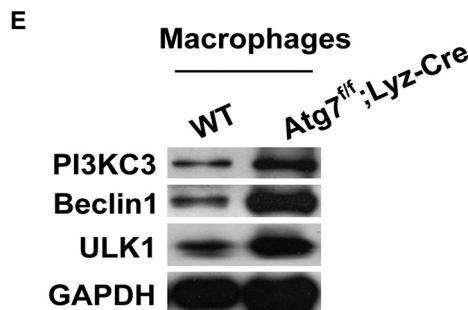


Fig. 4E

Authors are urged to introduce these corrections into any reprints they distribute. Secondary (abstract) services are urged to carry notice of these corrections as prominently as they carried the original abstracts.