

CORRECTION

# Correction: Spatial Homogeneity of Bacterial Communities Associated with the Surface Mucus Layer of the Reef-Building Coral *Acropora palmata*

The *PLOS ONE* Staff

There are errors in the color legend for [Fig 3](#). The publisher apologizes for the error. Please see the corrected [Fig 3](#) here.

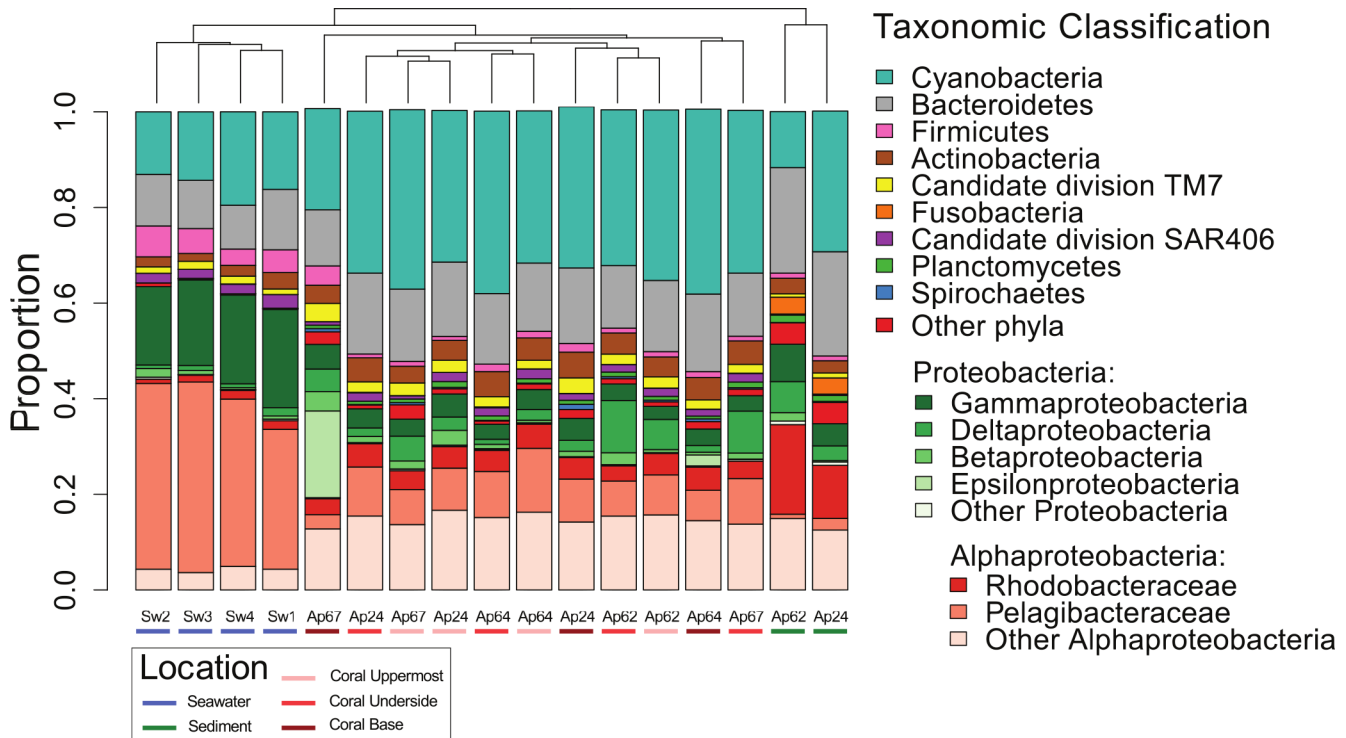


 OPEN ACCESS

**Citation:** The *PLOS ONE* Staff (2016) Correction: Spatial Homogeneity of Bacterial Communities Associated with the Surface Mucus Layer of the Reef-Building Coral *Acropora palmata*. *PLoS ONE* 11(1): e0146987. doi:10.1371/journal.pone.0146987

**Published:** January 8, 2016

**Copyright:** © 2016 The PLOS ONE Staff. This is an open access article distributed under the terms of the [Creative Commons Attribution License](#), which permits unrestricted use, distribution, and reproduction in any medium, provided the original author and source are credited.



**Fig 3. Microbial diversity in different regions of the SML of *A. palmata* (n = 3–4; 11 samples), reef seawater (n = 4), and adjacent sediment (n = 2).**

doi:10.1371/journal.pone.0146987.g001

### Reference

1. Kemp DW, Rivers AR, Kemp KM, Lipp EK, Porter JW, Wares JP (2015) Spatial Homogeneity of Bacterial Communities Associated with the Surface Mucus Layer of the Reef-Building Coral *Acropora palmata*. PLoS ONE 10(12): e0143790. doi:10.1371/journal.pone.0143790 PMID: 26659364