



# Thalamic Circuit Diversity: Modulation of the Driver/Modulator Framework

Martha E. Bickford \*

Department of Anatomical Sciences and Neurobiology, University of Louisville, Louisville, KY, USA

The idea that dorsal thalamic inputs can be divided into “drivers”, which provide the primary excitatory drive for the relay of information to cortex, and “modulators”, which alter the gain of signal transmission, has provided a valuable organizing principle for the study of thalamic function. This view further promoted the identification of “first order” and “higher order” thalamic nuclei, based on the origin of their driving inputs. Since the introduction of this influential terminology, a number of studies have revealed the existence of a wide variety of thalamic organizational schemes. For example, some thalamic nuclei are not innervated by typical driver inputs, but instead receive input from terminals which exhibit features distinct from those of either classic drivers or modulators. In addition, many thalamic nuclei contain unique combinations of convergent first order, higher order, and/or other “driver-like” inputs that do not conform with the driver/modulator framework. The assortment of synaptic arrangements identified in the thalamus are reviewed and discussed from the perspective that this organizational diversity can dramatically increase the computational capabilities of the thalamus, reflecting its essential roles in sensory, motor, and sensory-motor circuits.

## OPEN ACCESS

### Edited by:

W. Martin Usrey,  
University of California, Davis, USA

### Reviewed by:

Laszlo Acsady,  
Institute of Experimental Medicine,  
Hungary  
Henry Joseph Alitto,  
University of California, Berkeley, USA

### \*Correspondence:

Martha E. Bickford  
martha.bickford@louisville.edu

**Received:** 22 October 2015

**Accepted:** 15 December 2015

**Published:** 12 January 2016

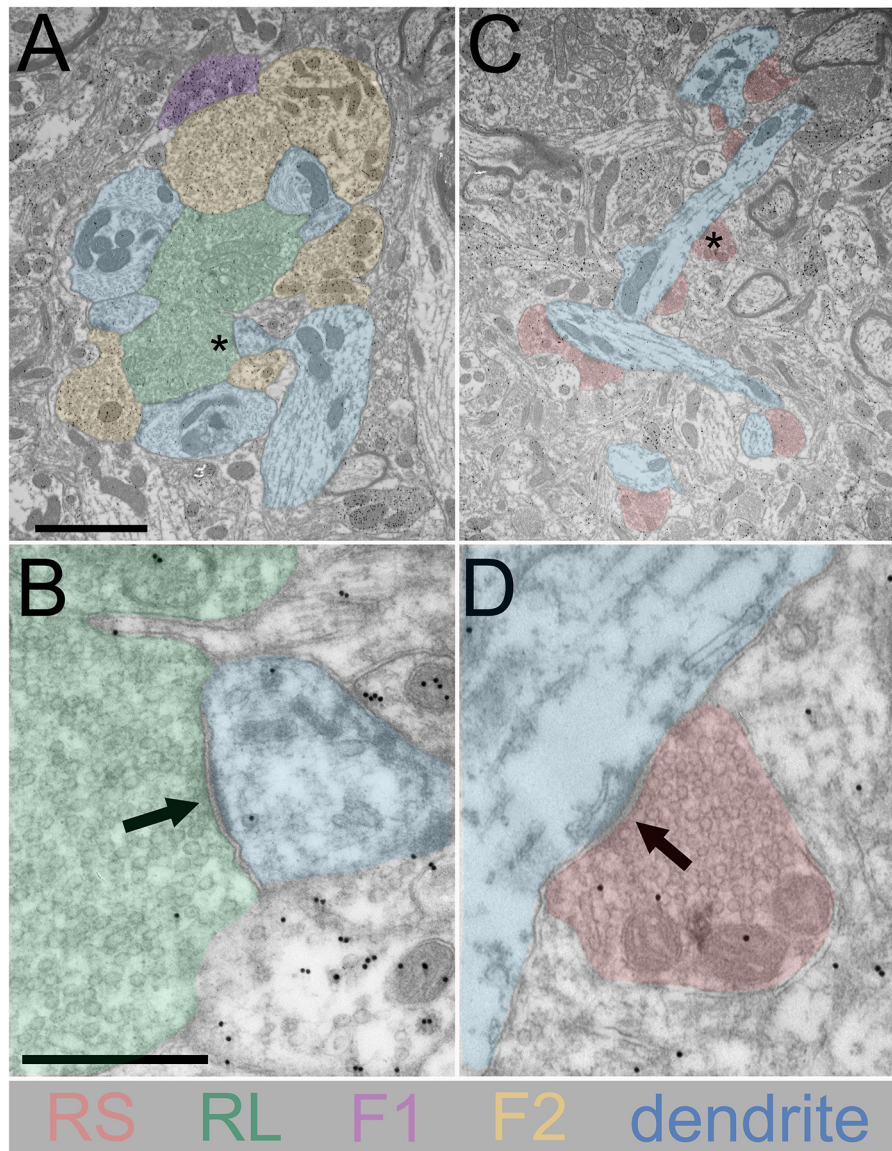
### Citation:

Bickford ME (2016) Thalamic Circuit Diversity: Modulation of the Driver/Modulator Framework. *Front. Neural Circuits* 9:86. doi: 10.3389/fncir.2015.00086

**Keywords:** dorsal lateral geniculate nucleus, pulvinar nucleus, corticothalamic, thalamocortical, lateral posterior nucleus, retinogeniculate, tectothalamic

## UNIVERSAL FEATURES OF THALAMIC CIRCUITS

Early electron microscopic studies of the dorsal thalamus revealed a number of similarities across sensory-related nuclei. Studies of the dorsal lateral geniculate nucleus (dLGN; Szentagothai, 1963; Guillery, 1969; Pasik et al., 1973), ventrobasal nucleus (VB; Ralston and Herman, 1969), medial geniculate nucleus (MGN; Majorossy and Réthelyi, 1968), and pulvinar nucleus (Majorossy et al., 1965; Mathers, 1972a) demonstrated the presence of complex (glomerular, **Figure 1A**) synaptic arrangements in which large synaptic terminals that contain round vesicles (RL profiles, **Figures 1A,B**, green) contact the proximal dendrites of thalamocortical relay cells (**Figures 1A,B**, blue), as well as the dendritic terminals of interneurons which contain sparsely distributed flattened or pleomorphic vesicles (F2 profiles, **Figure 1A**, yellow). RL profiles were identified as arising from the retina (axons traveling in the optic tract to the dLGN; Szentagothai, 1963), trigeminal nucleus (medial lemniscus to the VB; Ralston, 1969), inferior colliculus (lateral lemniscus to the MGN; Majorossy and Réthelyi, 1968) or cortex (internal capsule to the pulvinar; Mathers, 1972b). Two additional terminal types were identified across thalamic nuclei: small terminals that contained round vesicles (RS profiles, **Figures 1C,D**, red) that primarily contact the more distal portions of relay cell dendrites (**Figures 1C,D**, blue), and terminals that contained a high density of flattened vesicles (F1 profiles, **Figure 1A**, purple).



**FIGURE 1 | Synaptic terminal types in the dorsal thalamus defined using electron microscopy.** Electron microscopic images of the cat dorsal lateral geniculate nucleus (dLGN) are shown. Tissue was obtained from a previous study (Bickford et al., 2008); postembedding immunocytochemical techniques were used to reveal the presence of gamma amino butyric acid, GABA, with gold particles. **(A)** A dLGN glomerulus is illustrated which contains a large profile with round vesicles (RL, green), GABAergic dendritic terminals (F2, yellow, high density of gold particles), and relay cell dendrites (blue). A GABAergic axon terminal (F1, purple, high density of gold particles) is located at the periphery of the glomerulus. The asterisk indicates the location of a synapse shown at higher magnification in **(B)**. **(B)** The arrow indicates a synaptic contact of the RL profile (green) onto a relay cell dendrite (blue). **(C)** A non-glomerular region of the dLGN is illustrated which contains small profiles with round vesicles (RS, pink) that synapse on relay cell dendrites (blue). The asterisk indicates the location of a synapse shown at higher magnification in **(D)**. **(D)** The arrow indicates the synaptic contact of an RS profile (pink) onto a relay cell dendrite (blue). Scale in **(A)** = 2  $\mu\text{m}$  and also applies to **(C)**. Scale in **(B)** = 0.5  $\mu\text{m}$  and also applies to **(D)**.

## THE DRIVER/MODULATOR CONCEPT

The identified similarities in sensory thalamus circuits led Sherman and Guillery (1998) to propose an organizing framework of thalamic circuitry that has inspired numerous studies and greatly advanced our understanding of thalamic function. Based on the finding that the receptive field properties of dLGN neurons are nearly identical to that of their retinal

inputs (Cleland et al., 1971), as well as the finding that each dLGN cell is innervated by only a few retinal ganglion cell axons (Hamos et al., 1987). Sherman and Guillery (1998) proposed that the receptive field properties of each thalamic nucleus are determined by RL inputs that originate from a single source. In the dLGN, although retinal input comprises only 5–10% of the synapses (Van Horn et al., 2000), it is nevertheless the primary determinate of geniculate activity, and is therefore aptly

named the driving input. Within this framework, RL inputs across the thalamus are proposed to drive activity patterns (i.e., determine receptive field properties), while the remaining inputs to each nucleus are considered modulators, which can alter the transmission of sensory-driven activity in a state-dependent manner.

The prime examples of modulating inputs are the RS profiles, which in the dLGN, are either glutamatergic inputs that originate from layer VI of the striate cortex (Gilbert and Kelly, 1975), or cholinergic/nitroergic terminals that originate from the pedunculopontine tegmentum (PPT; Bickford et al., 1993; Erişir et al., 1997a,b). Both of these RS inputs have been found to influence the responsiveness of geniculate neurons, without dramatically changing their receptive field properties. Stimulation of the PPT increases the responsiveness of geniculate neurons to their driving retinal inputs (Lu et al., 1993), providing a mechanism for the global regulation of visual signal transfer during different states of arousal. Corticothalamic inputs may additionally tune activity patterns to enhance the responsiveness of restricted populations of thalamic neurons to their driving inputs, thereby aligning the actions of the thalamus and cortex (Briggs and Usrey, 2008).

## BIOPHYSICAL FEATURES OF DRIVERS AND MODULATORS

RL profiles are approximately 10 times larger than RS profiles (Li et al., 2003b; Bickford et al., 2010, 2015), and each RL bouton establishes numerous synaptic contacts (Budisantoso et al., 2012; Hammer et al., 2014, 2015), whereas RS profiles typically form single synapses with their postsynaptic partners (Jones and Powell, 1969; Erişir et al., 1997b). *In vitro* studies of responses elicited by activation of retinogeniculate or corticothalamic terminals in brain slices revealed that RL and RS profiles evoke very distinct types of postsynaptic responses. RL terminals exhibit a high probability of neurotransmitter release and their stimulation initially elicits large amplitude, fast, primarily ionotropic, glutamatergic responses; repetitive stimulation of RL profiles depletes synaptic vesicles and desensitizes postsynaptic receptors so that the amplitudes of postsynaptic responses rapidly decrease in a frequency-dependent manner (**Figure 2 class II, RL profile, driver, red traces**; Turner and Salt, 1998; Chen and Regehr, 2003; Li et al., 2003a; Reichova and Sherman, 2004; Groh et al., 2008; Budisantoso et al., 2012). In contrast, stimulation of RS corticothalamic terminals initially elicits smaller amplitude, ionotropic glutamatergic responses. These terminals exhibit a low probability of glutamate release, but their repetitive stimulation rapidly increases the amplitudes of postsynaptic responses in a frequency-dependent manner (**Figure 2 class I, RS profile, modulator, gray traces**; Turner and Salt, 1998; Granseth et al., 2002; Kielland et al., 2006; Jurgens et al., 2012). Repetitive stimulation of corticothalamic terminals can also activate metabotropic glutamate receptors (McCormick and von Krosigk, 1992). Finally, electrical stimulation of layer VI corticothalamic axons with increasing current levels results in a graded increase in the amplitude of postsynaptic responses, demonstrating that many RS terminals converge on postsynaptic

neurons (**Figure 2 class I, RS profile, modulator, gray**; Li et al., 2003a,b; Masterson et al., 2009, 2010). In contrast, electrical stimulation of RL axons with increasing current levels results in “all or none” changes in the amplitude of postsynaptic responses, demonstrating that each postsynaptic neuron receives input from only a few RL axons (**Figure 2 class II, RL profile, driver, red**; Li et al., 2003a,b; Ziburkus and Guido, 2006).

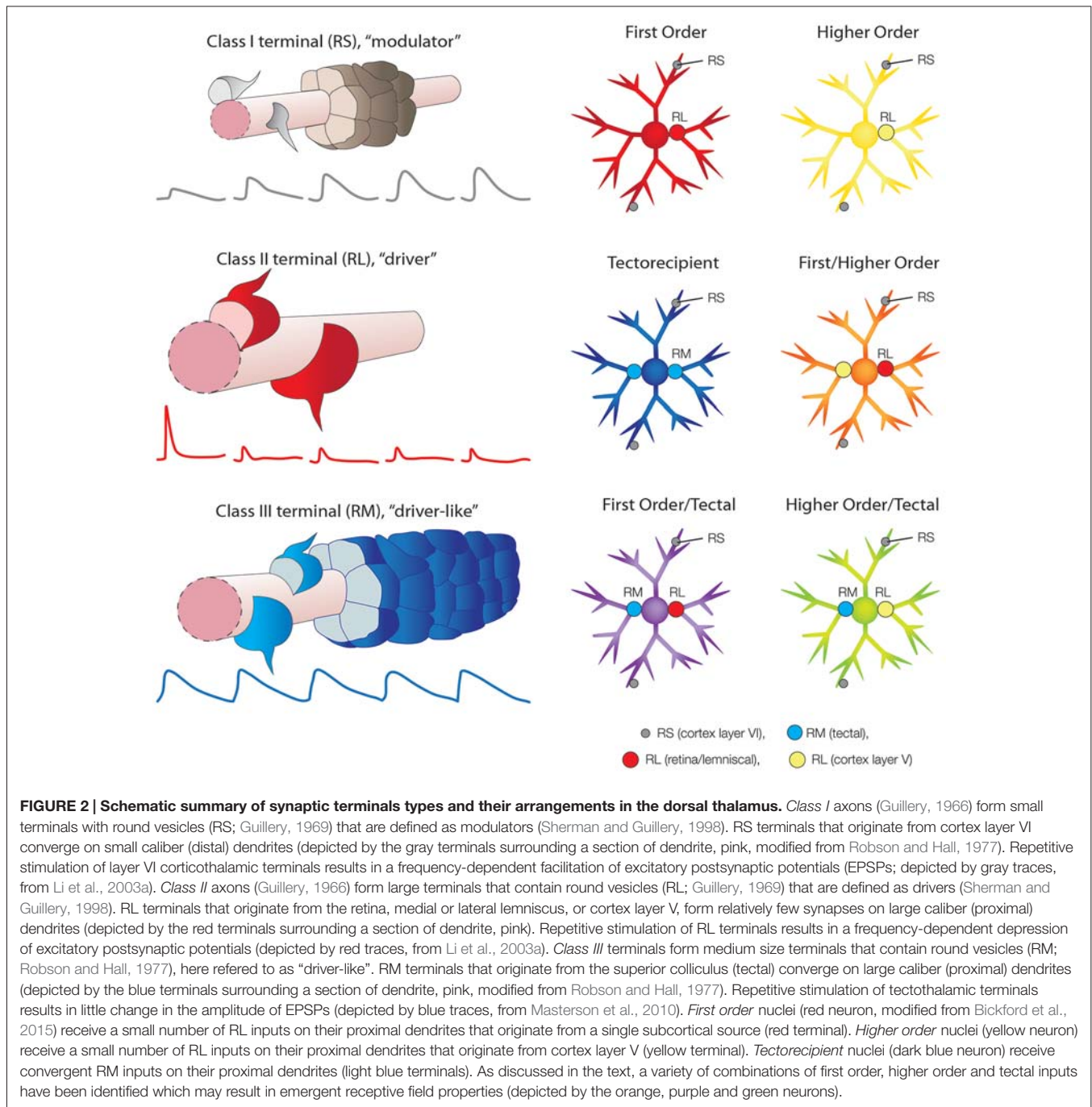
## FIRST AND HIGHER ORDER THALAMIC NUCLEI

A further organizing principle that grew from the driver/modulator framework of thalamic function was the ability to categorize nuclei based on the origin of their driving input. Sherman and Guillery (1998) defined first order nuclei as those that receive their driving input from sources that relay information from peripheral sensory receptors, such as the retinal input to the dLGN, or the lemniscal inputs to the VB and MGN (**Figure 2, first order, red neuron**). Higher order nuclei are defined as those that receive their driving input from the cortex, specifically from neurons in layer V (**Figure 2, higher order, yellow neuron**). The chief example of a higher order nucleus is the pulvinar nucleus, which receives very little ascending subcortical input (Rovó et al., 2012), but receives abundant input from corticothalamic cells located in both layer V and layer VI. In particular, the striate-recipient zones of the pulvinar nucleus (or lateral posterior nucleus, LPN, of carnivores and rodents) are the best examples of higher order thalamic nuclei (Mathers, 1972b; Ogren and Hendrickson, 1979; Abramson and Chalupa, 1985; Guillery et al., 2001; Li et al., 2003b; Huppé-Gourgues et al., 2006).

The idea that each thalamic nucleus is driven by a single primary input suggested that the function of higher order thalamic nuclei may be to transfer information from one cortical area to another. In other words, it has been suggested that the receptive field properties of pulvinar neurons are driven by layer V input from one cortical area, and these signals are transferred via the pulvinar to other cortical areas (Guillery and Sherman, 2002; Sherman and Guillery, 2002). While this hypothesis has not been fully tested with *in vivo* experiments, the existence of cortical-thalamo-cortical signal transmission has been demonstrated *in vitro* (Theyel et al., 2010).

## TECTORECIPIENT THALAMIC NUCLEI AND SPATIAL INTEGRATION

Although many thalamic nuclei can be categorized as first or higher order, it is now apparent that this nomenclature must be modified in order to include the wide variety of “non-canonical” thalamic circuits that have been identified in more recent years. For example, thalamic nuclei that are innervated by the superior colliculus cannot be classified as either first or higher order because, although tectothalamic synaptic terminals are not archetypal drivers, they are larger than all other synaptic terminals within these nuclei. Tectothalamic inputs can be considered “driver-like” in that they are medium-sized terminals that contain round vesicles (RM profiles) that innervate



proximal dendrites (**Figure 2 class III, RM profile, driver-like, blue**; Robson and Hall, 1977; Kelly et al., 2003; Chomsung et al., 2008; Masterson et al., 2009) and release glutamate to activate ionotropic glutamate receptors on postsynaptic neurons (Masterson et al., 2010). However, unlike typical driver inputs, many tectothalamic inputs can converge on individual neurons, and in nuclei where this convergence occurs, stimulation of tectothalamic inputs at frequencies of up to 20 Hz elicits postsynaptic responses that maintain stable amplitudes (**Figure 2 class III, RM profile, driver-like, blue traces**). That is, tectothalamic inputs exhibit neither frequency-dependent

depression, nor facilitation. However, stimulation at 100 Hz can elicit the release of substance P from these terminals which, through activation of neurokinin one receptors, can boost tectothalamic responses (Masterson et al., 2010). Finally, tectothalamic terminals contain a different complement of presynaptic proteins than those found in classic drivers or modulators (Wei et al., 2011). Thus, tectorecipient nuclei (**Figure 2, tectorecipient, blue neuron**) are distinct from either first or higher order nuclei, which both contain RL profiles.

The absence of RL inputs has been described in other thalamic nuclei (Smith et al., 2007; Rovó et al., 2012). In the paralaminar

region of the MGN, inputs originating from the superior and inferior colliculi, were described as “integrators” (Smith et al., 2007). The idea behind this nomenclature is that within nuclei that lack typical driver inputs, the collective activity of many convergent inputs may determine the receptive field properties of thalamic neurons. Support for this concept was provided by Chalupa et al. (1983), who found that the receptive field sizes of neurons in the tectorecipient zone of the cat LPN were much larger than those of neurons in the superficial layers of the superior colliculus. This suggests that, in some regions of the thalamus, the convergence of multiple inputs onto individual neurons provides spatial integration to create unique, emergent, receptive field properties.

## FIRST AND HIGHER ORDER CONVERGENCE AND TEMPORAL INTEGRATION

Groh et al. (2014) clearly demonstrated the convergence of both first and higher order driver inputs onto single neurons in the somatosensory thalamus (**Figure 2**, *first order/higher order*, orange neuron). Using anatomical techniques, they demonstrated that large synaptic terminals from both the trigeminal nucleus and layer V of the barrel cortex innervated the proximal dendrites of single neurons in the medial subdivision of the mouse posterior nucleus. They then established that when activated simultaneously, these two inputs combine in a supralinear fashion. Such convergence therefore provides a mechanism for the synergistic amplification of signals within a narrow temporal window. In this case the convergence of two driver inputs may report the relative timing between sensory events and ongoing cortical activity.

### FIRST ORDER AND TECTAL “DRIVER-LIKE” CONVERGENCE: SENSORY/MOTOR INTEGRATION?

Even within the first order dLGN, where the synaptic arrangements originally inspired the driver/modulator framework, there are restricted regions that contain unique circuits. In the dorsolateral shell of the mouse dLGN, inputs from the superior colliculus and the retina were demonstrated to converge on single neurons using both anatomical and physiological approaches (Bickford et al., 2015; **Figure 2**, *first order/tectal*, purple neuron). In this case, such convergence may be used to integrate visual and motor signals. For example the convergence of retinal and tectal inputs in the dLGN may be necessary to calculate the trajectory of visual stimuli in relation to movement of the body.

### CONVERGENCE OF HIGHER ORDER AND “DRIVER-LIKE” INPUTS?

There are a number of thalamic regions that are innervated by large driver terminals that originate from the cortex, as well as ascending driver-like terminals. One region is the rodent LPN, where large terminals that originate from the

primary visual cortex overlap the distribution of terminals that originate from the superior colliculus (Li et al., 2003b; Masterson et al., 2009). Another example is the cat pulvinar nucleus where large terminals that originate from cortical area 7 overlap the distribution of large terminals that originate from the pretectum (Baldauf et al., 2005a,b). Many other possible combinations have been revealed by the distributions of the type 1 and type 2 vesicular glutamate transporters, which are found in cortical and subcortical inputs respectively (Rovó et al., 2012). While the convergence of tectal/pretectal and higher order inputs onto single neurons has not yet been definitively demonstrated, the variety of terminal patterns found across the thalamus suggest that novel spatial and temporal receptive field properties can potentially be constructed via the integration of first order, higher order and/or other driver-like inputs.

## ADDITIONAL THALAMIC DIVERSITY

This short review highlights just a few of the variations of the driver/modulator framework, by focusing on thalamic nuclei related to audition, somatosensation and vision. When the full complement of thalamic nuclei is considered, a host of additional synaptic arrangements can be identified. For example, nuclei of the motor thalamus receive convergent input from the cortex, cerebellum and basal ganglia, and have been described as “super integrators” (Bosch-Bouju et al., 2013). Finally, in addition to the various arrangements of glutamatergic inputs, a wide variety of inhibitory circuits have been identified that can provide potent suppression of thalamic activity (Barthó et al., 2002; Bokor et al., 2005; Bodor et al., 2008; Giber et al., 2015).

## SUMMARY AND FUTURE DIRECTIONS

The detailed study of thalamic circuits has unveiled a wide range of potential computational capabilities. Receptive field properties in both first and higher order nuclei are likely driven by a single input, and modulated in a state dependent manner. In contrast, receptive field properties in tectorecipient nuclei may be created by the integration of multiple convergent inputs. A wide array of additional thalamic receptive field properties may be created, dependent on the degree of convergence and relative timing of first order, higher order, and/or other driver-like inputs.

Correlations between the diversity of thalamic circuits and thalamocortical circuits may be a particularly fruitful avenue for furthering our understanding of thalamic function. As recently reviewed by Harris and Shepherd (2015), the division of the thalamus into “core” and “matrix” nuclei based on their thalamocortical projection patterns (Jones, 1998, 2001) is a useful starting point, in that the core and matrix categories roughly correlate with first and higher order nuclei. In primary sensory areas of cortex, the thalamocortical axons originating from core nuclei primarily target layer IV (e.g., core/first order dLGN projections to V1; Winfield and Powell, 1976; Winfield et al., 1982; Raczkowski and Fitzpatrick, 1990; Nahmani and Erisir, 2005; Familtsev et al., 2015),

whereas thalamocortical axons originating from matrix nuclei target layers I and V (e.g., matrix/higher order pulvinar/LPN projections to V1; Ogren and Hendrickson, 1977; Carey et al., 1979; Herkenham, 1980; Abramson and Chalupa, 1985).

However, as stated by Harris and Shepherd (2015), “the concepts of core- and matrix-type projections may need to be extended to manage the full complexity of thalamic projections to higher order cortex”. Toward this end, Clascá et al. (2012) have described four categories of thalamic nuclei (core, matrix-focal, matrix-interareal, and intralaminar) to incorporate the diversity of thalamocortical projection patterns, as well as the subcortical projections of the thalamus to the striatum and amygdala. Within this framework, the matrix-focal category is typified by neurons in the koniocellular layers (primate), or shell (rodent) of the dLGN, which project to the superficial layers of V1 (Hendry and Reid, 2000; Shostak et al., 2002; Cruz-Martín et al., 2014; Bickford et al., 2015). The matrix-interareal category is correlated with nuclei such as the tectorecipient pulvinar or LPN, where neurons project to multiple visual areas, as well as the striatum and amygdala (Chomsung et al., 2010; Day-Brown et al., 2010; Nakamura et al., 2015).

## REFERENCES

- Abramson, B. P., and Chalupa, L. M. (1985). The laminar distribution of cortical connections with the tecto- and cortico-recipient zones in the cat's lateral posterior nucleus. *Neuroscience*. 15, 81–95. doi:10.1016/0306-4522(85)90125-3
- Baldauf, Z. B., Chomsung, R. D., Carden, W. B., May, P. J., and Bickford, M. E. (2005a). Ultrastructural analysis of projections to the pulvinar nucleus of the cat. I: Middle suprasylvian gyrus (areas 5 and 7). *J. Comp. Neurol.* 485, 87–107. doi:10.1002/cne.20480
- Baldauf, Z. B., Wang, S., Chomsung, R. D., May, P. J., and Bickford, M. E. (2005b). Ultrastructural analysis of projections to the pulvinar nucleus of the cat. II: Pretectum. *J. Comp. Neurol.* 485, 108–126. doi:10.1002/cne.20487
- Barthó, P., Wang, S., Chomsung, R. D., Freund, T. F., and Acsády, L. (2002). Selective GABAergic innervation of thalamic nuclei from zona incerta. *Eur. J. Neurosci.* 16, 999–1014. doi:10.1046/j.1460-9568.2002.02157.x
- Bickford, M. E., Günlük, A. E., Guido, W., and Sherman, S. M. (1993). Evidence that cholinergic axons from the parabrachial region of the brainstem are the exclusive source of nitric oxide in the lateral geniculate nucleus of the cat. *J. Comp. Neurol.* 334, 410–430. doi:10.1002/cne.903340307
- Bickford, M. E., Slusarczyk, A., Dilger, E. K., Krahe, T. E., Kucuk, C., Guido, W., et al. (2010). Synaptic development of the mouse dorsal lateral geniculate nucleus. *J. Comp. Neurol.* 518, 622–635. doi:10.1002/cne.22223
- Bickford, M. E., Wei, H., Eisenback, M. A., Chomsung, R. D., Slusarczyk, A. S., and Dankowski, A. B. (2008). Synaptic organization of thalamocortical axon collaterals in the perigeniculate nucleus and dorsal lateral geniculate nucleus. *J. Comp. Neurol.* 508, 264–285. doi:10.1002/cne.21671
- Bickford, M. E., Zhou, N., Krahe, T. E., Govindaiah, G., and Guido, W. (2015). Retinal and Tectal “Driver-Like” Inputs Converge in the Shell of the Mouse Dorsal Lateral Geniculate Nucleus. *J. Neurosci.* 35, 10523–10534. doi:10.1523/JNEUROSCI.3375-14.2015
- Bodor, A. L., Giber, K., Rovó, Z., Ulbert, I., and Acsády, L. (2008). Structural correlates of efficient GABAergic transmission in the basal ganglia-thalamus pathway. *J. Neurosci.* 28, 3090–3102. doi:10.1523/jneurosci.5266-07.2008
- Bokor, H., Frère, S. G. A., Eyre, M. D., Slézia, A., Ulbert, I., Lüthi, A., et al. (2005). Selective GABAergic Control of Higher-Order Thalamic Relays. *Neuron*. 45, 929–940. doi:10.1016/j.neuron.2005.01.048
- Bosch-Bouju, C., Hyland, B. I., and Parr-Brownlie, L. C. (2013). Motor thalamus integration of cortical, cerebellar and basal ganglia information: implications for normal and parkinsonian conditions. *Front. Comput. Neurosci.* 7:163. doi:10.3389/fncom.2013.00163
- Briggs, F., and Usrey, W. M. (2008). Emerging views of corticothalamic function. *Curr. Opin. Neurobiol.* 18, 403–407. doi:10.1016/j.conb.2008.09.002
- Budisantoso, T., Matsui, K., Kamasawa, N., Fukazawa, Y., and Shigemoto, R. (2012). Mechanisms underlying signal filtering at a multisynapse contact. *J. Neurosci.* 32, 2357–2376. doi:10.1523/jneurosci.5243-11.2012
- Carey, R. G., Fitzpatrick, D., and Diamond, I. T. (1979). Layer I of striate cortex of Tupaia glis and Galago senegalensis: projections from thalamus and claustrum revealed by retrograde transport of horseradish peroxidase. *J. Comp. Neurol.* 186, 393–437. doi:10.1002/cne.901860306
- Chalupa, L. M., Williams, R. W., and Hughes, M. J. (1983). Visual response properties in the tectorecipient zone of the cat's lateral posterior-pulvinar complex: a comparison with the superior colliculus. *J. Neurosci.* 3, 2587–2596.
- Chen, C., and Regehr, W. G. (2003). Presynaptic modulation of the retinogeniculate synapse. *J. Neurosci.* 23, 3130–3135. doi:10.3410/f.1013375.190301
- Chomsung, R. D., Petry, H. M., and Bickford, M. E. (2008). Ultrastructural examination of diffuse and specific tectopulvinar projections in the tree shrew. *J. Comp. Neurol.* 510, 24–46. doi:10.1002/cne.21763
- Chomsung, R. D., Wei, H., Day-Brown, J. D., Petry, H. M., and Bickford, M. E. (2010). Synaptic organization of connections between the temporal cortex and pulvinar nucleus of the tree shrew. *Cereb. Cortex*. 20, 997–1011. doi:10.1093/cercor/bhp162
- Clascá, F., Rubio-Garrido, P., and Jabaudon, D. (2012). Unveiling the diversity of thalamocortical neuron subtypes. *Eur. J. Neurosci.* 35, 1524–1532. doi:10.1111/j.1460-9568.2012.08033.x
- Cleland, B. G., Dubin, M. W., and Levick, W. R. (1971). Simultaneous recording of input and output of lateral geniculate neurones. *Nat. New Biol.* 231, 191–192. doi:10.1038/newbio231191a0
- Cruikshank, S. J., Ahmed, O. J., Stevens, T. R., Patrick, S. L., Gonzalez, A. N., Elmaleh, M., et al. (2012). Thalamic control of layer 1 circuits in prefrontal cortex. *J. Neurosci.* 32, 17813–17823. doi:10.1523/JNEUROSCI.3231-12.2012
- Cruikshank, S. J., Urabe, H., Nurmikko, A. V., and Connors, B. W. (2010). Pathway-specific feedforward circuits between thalamus and neocortex

Recent anatomical and optogenetic studies have demonstrated that thalamic axons can target a wide array of cortical cell types, dependent on the cortical area, cortical lamina, and thalamic nucleus of origin (Petreanu et al., 2009; Cruikshank et al., 2010, 2012; Hooks et al., 2013; Kloc and Maffei, 2014; Shigematsu et al., 2015). Thus a challenge for future studies will be the documentation and classification of thalamocortical microcircuits. As evidenced by the advancements achieved since the introduction of the driver/modulator framework, identification of canonical microcircuits is a key component in deciphering nervous system function. The subsequent identification of variations in standard circuit modules allows us then to build and expand upon these conceptual frameworks, driving the field forward.

## AUTHOR CONTRIBUTIONS

MEB wrote the manuscript.

## FUNDING

This work was supported by the National Eye Institute (R01EY024173).

- revealed by selective optical stimulation of axons. *Neuron*. 65, 230–245. doi: 10.1016/j.neuron.2009.12.025
- Cruz-Martín, A., El-Danaf, R. N., Osakada, F., Sriram, B., Dhande, O. S., Nguyen, P. L., et al. (2014). A dedicated circuit links direction-selective retinal ganglion cells to the primary visual cortex. *Nature* 507, 358–361. doi: 10.1038/nature12989
- Day-Brown, J. D., Wei, H., Chomsung, R. D., Petry, H. M., and Bickford, M. E. (2010). Pulvinar projections to the striatum and amygdala in the tree shrew. *Front. Neuroanat.* 4:143. doi: 10.3389/fnana.2010.00143
- Erişir, A., Van Horn, S. C., and Sherman, S. M. (1997a). Relative numbers of cortical and brainstem inputs to the lateral geniculate nucleus. *Proc. Natl. Acad. Sci. U S A* 94, 1517–1520. doi: 10.1073/pnas.94.4.1517
- Erişir, A., Van Horn, S. C., Bickford, M. E., and Sherman, S. M. (1997b). Immunocytochemistry and distribution of parabrachial terminals in the lateral geniculate nucleus of the cat: a comparison with corticogeniculate terminals. *J. Comp. Neurol.* 377, 535–549. doi: 10.1002/(sici)1096-9861(19970127)377:4<535::aid-cne5>3.3.co;2-q
- Familtsev, D., Quiggins, R., Masterson, P. S., Dang, W., Slusarczyk, A. S., Petry, H. M., et al. (2015). The ultrastructure of geniculocortical synaptic connections in the tree shrew striate cortex. *J. Comp. Neurol.* doi: 10.1002/cne.23907 [Epub ahead of print].
- Giber, K., Diana, M. A., Plattner, V. M., Dugué, G. P., Bokor, H., Rousseau, C. V., et al. (2015). A subcortical inhibitory signal for behavioral arrest in the thalamus. *Nat. Neurosci.* 18, 562–568. doi: 10.1038/nn.3951
- Gilbert, C. D., and Kelly, J. P. (1975). The projections of cells in different layers of the cat's visual cortex. *J. Comp. Neurol.* 163, 81–105. doi: 10.1002/cne.901630106
- Graneth, B., Ahlstrand, E., and Lindström, S. (2002). Paired pulse facilitation of corticogeniculate EPSCs in the dorsal lateral geniculate nucleus of the rat investigated *in vitro*. *J. Physiol.* 544, 477–486. doi: 10.1111/j.2002.00477.x
- Groh, A., Bokor, H., Mease, R. A., Plattner, V. M., Hangya, B., Stroth, A., et al. (2014). Convergence of cortical and sensory driver inputs on single thalamocortical cells. *Cereb. Cortex* 24, 3167–3179. doi: 10.1093/cercor/bht173
- Groh, A., de Kock, C. P. J., Wimmer, V. C., Sakmann, B., and Kuner, T. (2008). Driver or coincidence detector: modal switch of a corticothalamic giant synapse controlled by spontaneous activity and short-term depression. *J. Neurosci.* 28, 9652–9663. doi: 10.1523/jneurosci.1554-08.2008
- Guillery, R. W. (1966). A study of Golgi preparations from the dorsal lateral geniculate nucleus of the adult cat. *J. Comp. Neurol.* 128, 21–50. doi: 10.1002/cne.901280104
- Guillery, R. W. (1969). The organization of synaptic interconnections in the laminae of the dorsal lateral geniculate nucleus of the cat. *Z. Zellforsch. Mikrosk. Anat.* 96, 1–38. doi: 10.1007/bf00321474
- Guillery, R. W., Feig, S. L., and Van Lieshout, D. P. (2001). Connections of higher order visual relays in the thalamus: a study of corticothalamic pathways in cats. *J. Comp. Neurol.* 438, 66–85. doi: 10.1002/cne.1302
- Guillery, R. W., and Sherman, S. M. (2002). Thalamic relay functions and their role in corticocortical communication: generalizations from the visual system. *Neuron*. 33, 163–175. doi: 10.1016/s0896-6273(01)00582-7
- Hammer, S., Carrillo, G. L., Govindaiah, G., Monavarfeshani, A., Bircher, J. S., Su, J., et al. (2014). Nuclei-specific differences in nerve terminal distribution, morphology and development in mouse visual thalamus. *Neural Dev.* 9:16. doi: 10.1186/1749-8104-9-16
- Hammer, S., Monavarfeshani, A., Lemon, T., Su, J., and Fox, M. A. (2015). Multiple retinal axons converge onto relay cells in the adult mouse thalamus. *Cell Rep.* 12, 1575–1583. doi: 10.1016/j.celrep.2015.08.003
- Hamos, J. E., Van Horn, S. C., Raczkowski, D., and Sherman, S. M. (1987). Synaptic circuits involving an individual retinogeniculate axon in the cat. *J. Comp. Neurol.* 259, 165–192. doi: 10.1002/cne.902590202
- Harris, K. D., and Shepherd, G. M. G. (2015). The neocortical circuit: themes and variations. *Nat. Neurosci.* 18, 170–181. doi: 10.1038/nn.3917
- Hendry, S. H., and Reid, R. C. (2000). The koniocellular pathway in primate vision. *Annu. Rev. Neurosci.* 23, 127–153. doi: 10.1146/annurev.neuro.23.1.127
- Herkenham, M. (1980). Laminar organization of thalamic projections to the rat neocortex. *Science*. 207, 532–535. doi: 10.1126/science.7352263
- Hooks, B. M., Mao, T., Gutnisky, D. A., Yamawaki, N., Svoboda, K., and Shepherd, G. M. G. (2013). Organization of cortical and thalamic input to pyramidal neurons in mouse motor cortex. *J. Neurosci.* 33, 748–760. doi: 10.1523/JNEUROSCI.4338-12.2013
- Huppé-Gourgues, F., Bickford, M. E., Boire, D., Ptito, M., and Casanova, C. (2006). Distribution, morphology and synaptic targets of corticothalamic terminals in the cat lateral posterior-pulvinar complex that originate from the posteromedial lateral suprasylvian cortex. *J. Comp. Neurol.* 497, 847–863. doi: 10.1002/cne.21024
- Jones, E. G. (1998). A new view of specific and nonspecific thalamocortical connections. *Adv. Neurol.* 77, 49–71.
- Jones, E. G. (2001). The thalamic matrix and thalamocortical synchrony. *Trends Neurosci.* 24, 595–601. doi: 10.1016/s0166-2236(00)01922-6
- Jones, E. G., and Powell, T. P. (1969). An electron microscopic study of the mode of termination of cortico-thalamic fibres within the sensory relay nuclei of the thalamus. *Proc. R. Soc. Lond. B Biol. Sci.* 172, 173–185. doi: 10.1098/rspb.1969.0018
- Jurgens, C. W. D., Bell, K. A., McQuiston, A. R., and Guido, W. (2012). Optogenetic stimulation of the corticothalamic pathway affects relay cells and GABAergic neurons differently in the mouse visual thalamus. *PLoS One* 7:e45717. doi: 10.1371/journal.pone.0045717
- Kelly, L. R., Li, J., Carden, W. B., and Bickford, M. E. (2003). Ultrastructure and synaptic targets of tectothalamic terminals in the cat lateral posterior nucleus. *J. Comp. Neurol.* 464, 472–486. doi: 10.1002/cne.10800
- Kielland, A., Erişir, A., Walaas, S. I., and Heggelund, P. (2006). Synapsin utilization differs among functional classes of synapses on thalamocortical cells. *J. Neurosci.* 26, 5786–5793. doi: 10.1523/jneurosci.4631-05.2006
- Kloc, M., and Maffei, A. (2014). Target-specific properties of thalamocortical synapses onto layer 4 of mouse primary visual cortex. *J. Neurosci.* 34, 15455–15465. doi: 10.1523/jneurosci.2595-14.2014
- Li, J., Guido, W., and Bickford, M. E. (2003a). Two distinct types of corticothalamic EPSPs and their contribution to short-term synaptic plasticity. *J. Neurophysiol.* 90, 3429–3440. doi: 10.1152/jn.00456.2003
- Li, J., Wang, S., and Bickford, M. E. (2003b). Comparison of the ultrastructure of cortical and retinal terminals in the rat dorsal lateral geniculate and lateral posterior nuclei. *J. Comp. Neurol.* 460, 394–409. doi: 10.1002/cne.10646
- Lu, S. M., Guido, W., and Sherman, S. M. (1993). The brain-stem parabrachial region controls mode of response to visual stimulation of neurons in the cat's lateral geniculate nucleus. *Vis. Neurosci.* 10, 631–642. doi: 10.1017/s0952523800005332
- Majorossy, K., and Réthelyi, M. (1968). Synaptic architecture in the medial geniculate body (ventral division). *Exp. Brain Res.* 6, 306–323. doi: 10.1007/bf00233182
- Majorossy, K., Réthelyi, M., and Szentágothai, J. (1965). The large glomerular synapse of the pulvinar. *J. Hirnforsch.* 7, 415–432.
- Masterson, S. P., Li, J., and Bickford, M. E. (2009). Synaptic organization of the tectorecipient zone of the rat lateral posterior nucleus. *J. Comp. Neurol.* 515, 647–663. doi: 10.1002/cne.22077
- Masterson, S. P., Li, J., and Bickford, M. E. (2010). Frequency-dependent release of substance P mediates heterosynaptic potentiation of glutamatergic synaptic responses in the rat visual thalamus. *J. Neurophysiol.* 104, 1758–1767. doi: 10.1152/jn.00010.2010
- Mathers, L. H. (1972a). Ultrastructure of the pulvinar of the squirrel monkey. *J. Comp. Neurol.* 146, 15–42. doi: 10.1002/cne.901460103
- Mathers, L. H. (1972b). The synaptic organization of the cortical projection to the pulvinar of the squirrel monkey. *J. Comp. Neurol.* 146, 43–60. doi: 10.1002/cne.901460104
- McCormick, D. A., and von Krosigk, M. (1992). Corticothalamic activation modulates thalamic firing through glutamate “metabotropic” receptors. *Proc. Natl. Acad. Sci. U S A* 89, 2774–2778. doi: 10.1073/pnas.89.7.2774
- Nahmani, M., and Erişir, A. (2005). VGluT2 immunocytochemistry identifies thalamocortical terminals in layer 4 of adult and developing visual cortex. *J. Comp. Neurol.* 484, 458–473. doi: 10.1002/cne.20505
- Nakamura, H., Hioki, H., Furuta, T., and Kaneko, T. (2015). Different cortical projections from three subdivisions of the rat lateral posterior thalamic nucleus: a single-neuron tracing study with viral vectors. *Eur. J. Neurosci.* 41, 1294–1310. doi: 10.1111/ejn.12882
- Ogren, M. P., and Hendrickson, A. E. (1977). The distribution of pulvinar terminals in visual areas 17 and 18 of the monkey. *Brain Res.* 137, 343–350. doi: 10.1016/0006-8993(77)90344-4

- Ogren, M. P., and Hendrickson, A. E. (1979). The morphology and distribution of striate cortex terminals in the inferior and lateral subdivisions of the Macaca monkey pulvinar. *J. Comp. Neurol.* 188, 179–199. doi: 10.1002/cne.901880113
- Pasik, T., Pasik, P., Hamori, J., and Szentagothai, J. (1973). “Triadic” synapses and other articulations of interneurons in the lateral geniculate nucleus of rhesus monkeys. *Trans. Am. Neurol. Assoc.* 98, 293–295.
- Petreanu, L., Mao, T., Sternson, S. M., and Svoboda, K. (2009). The subcellular organization of neocortical excitatory connections. *Nature* 457, 1142–1145. doi: 10.1038/nature07709
- Raczkowski, D., and Fitzpatrick, D. (1990). Terminal arbors of individual, physiologically identified geniculocortical axons in the tree shrew’s striate cortex. *J. Comp. Neurol.* 302, 500–514. doi: 10.1002/cne.903020307
- Ralston, H. J., III (1969). The synaptic organization of lemniscal projections to the ventrobasal thalamus of the cat. *Brain Res.* 14, 99–115. doi: 10.1016/0006-8993(69)90033-x
- Ralston, H. J., III, and Herman, M. M. (1969). The fine structure of neurons and synapses in ventrobasal thalamus of the cat. *Brain Res.* 14, 77–97. doi: 10.1016/0006-8993(69)90032-8
- Reichova, I., and Sherman, S. M. (2004). Somatosensory corticothalamic projections: distinguishing drivers from modulators. *J. Neurophysiol.* 92, 2185–2197. doi: 10.1152/jn.00322.2004
- Robson, J. A., and Hall, W. C. (1977). The organization of the pulvinar in the grey squirrel (*Sciurus carolinensis*). II. Synaptic organization and comparisons with the dorsal lateral geniculate nucleus. *J. Comp. Neurol.* 173, 389–416. doi: 10.1002/cne.901730211
- Rovó, Z., Ulbert, I., and Acsády, L. (2012). Drivers of the primate thalamus. *J. Neurosci.* 32, 17894–17908. doi: 10.1523/jneurosci.2815-12.2012
- Sherman, S. M., and Guillery, R. W. (1998). On the actions that one nerve cell can have on another: distinguishing “drivers” from “modulators”. *Proc. Natl. Acad. Sci. U S A* 95, 7121–7126. doi: 10.1073/pnas.95.12.7121
- Sherman, S. M., and Guillery, R. W. (2002). The role of the thalamus in the flow of information to the cortex. *Philos. Trans. R. Soc. Lond. B Biol. Sci.* 357, 1695–1708. doi: 10.1098/rstb.2002.1161
- Shigematsu, N., Ueta, Y., Mohamed, A. A., Hatada, S., Fukuda, T., Kubota, Y., et al. (2015). Selective Thalamic Innervation of Rat Frontal Cortical Neurons. *Cereb. Cortex*. doi: 10.1093/cercor/bhv124 [Epub ahead of print].
- Shostak, Y., Ding, Y., Mavity-Hudson, J., and Casagrande, V. A. (2002). Cortical synaptic arrangements of the third visual pathway in three primate species: *Macaca mulatta*, *Saimiri sciureus* and *Aotus trivirgatus*. *J. Neurosci.* 22, 2885–2893.
- Smith, P. H., Bartlett, E. L., and Kowalkowski, A. (2007). Cortical and collicular inputs to cells in the rat paralamina thalamic nuclei adjacent to the medial geniculate body. *J. Neurophysiol.* 98, 681–695. doi: 10.1152/jn.00235.2007
- Szentagothai, J. (1963). The structure of the synapse in the lateral geniculate body. *Acta. Anat. (Basel)*. 55, 166–185. doi: 10.1159/000142468
- Theyel, B. B., Llano, D. A., and Sherman, S. M. (2010). The corticothalamic circuit drives higher-order cortex in the mouse. *Nat. Neurosci.* 13, 84–88. doi: 10.1038/nn.2449
- Turner, J. P., and Salt, T. E. (1998). Characterization of sensory and corticothalamic excitatory inputs to rat thalamocortical neurones *in vitro*. *J. Physiol.* 510, 829–843. doi: 10.1111/j.1469-7793.1998.829bj.x
- Van Horn, S. C., Erişir, A., and Sherman, S. M. (2000). Relative distribution of synapses in the A-laminae of the lateral geniculate nucleus of the cat. *J. Comp. Neurol.* 416, 509–520. doi: 10.1002/(sici)1096-9861(20000124)416:4<509::aid-cne7>3.0.co;2-h
- Wei, H., Masterson, S. P., Petry, H. M., and Bickford, M. E. (2011). Diffuse and specific tectopulvinar terminals in the tree shrew: synapses, synapses and synaptic potentials. *PLoS One* 6:e23781. doi: 10.1371/journal.pone.0023781
- Winfield, D. A., and Powell, T. P. (1976). The termination of thalamo-cortical fibres in the visual cortex of the cat. *J. Neurocytol.* 5, 269–281. doi: 10.1007/bf01175115
- Winfield, D. A., Rivera-Dominguez, M., and Powell, T. P. (1982). The termination of geniculocortical fibres in area 17 of the visual cortex in the macaque monkey. *Brain Res.* 231, 19–32. doi: 10.1016/0006-8993(82)90004-x
- Ziburkus, J., and Guido, W. (2006). Loss of binocular responses and reduced retinal convergence during the period of retinogeniculate axon segregation. *J. Neurophysiol.* 96, 2775–2784. doi: 10.1152/jn.01321.2004

**Conflict of Interest Statement:** The author declares that the research was conducted in the absence of any commercial or financial relationships that could be construed as a potential conflict of interest.

Copyright © 2016 Bickford. This is an open-access article distributed under the terms of the Creative Commons Attribution License (CC BY). The use, distribution and reproduction in other forums is permitted, provided the original author(s) or licensor are credited and that the original publication in this journal is cited, in accordance with accepted academic practice. No use, distribution or reproduction is permitted which does not comply with these terms.