

VOLUME 288 (2013) PAGES 21729–21741
 DOI 10.1074/jbc.A113.463885

The small GTPase RalA controls c-Jun N-terminal kinase-mediated FOXO activation by regulation of a JIP1 scaffold complex.

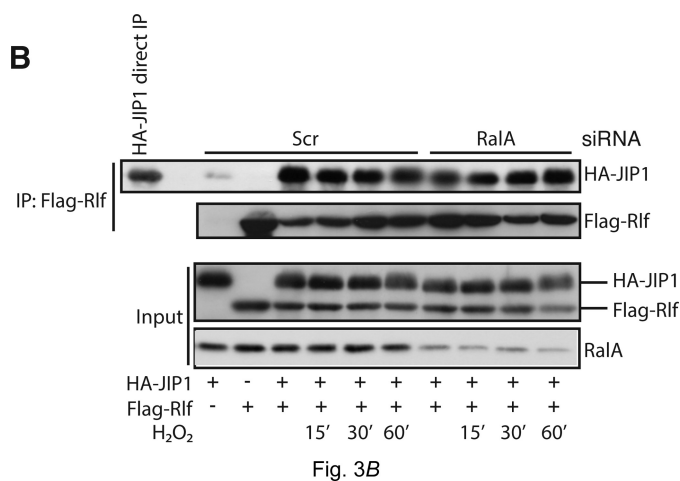
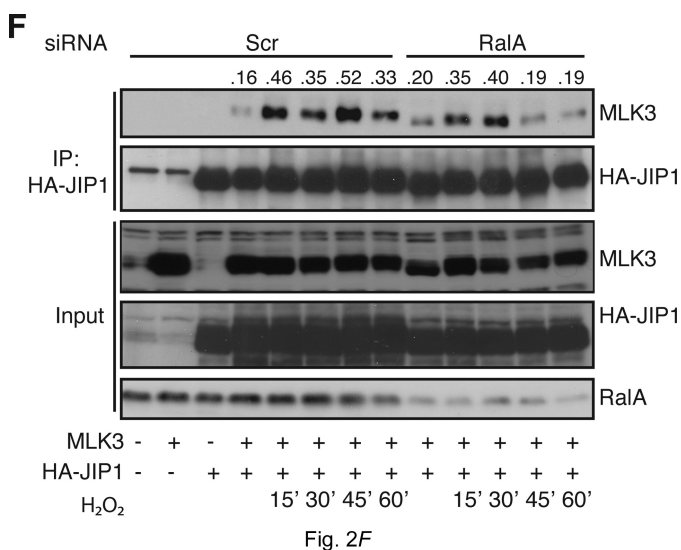
Maaïke C. W. van den Berg, Inkie J. A. van Gogh, Alida M. M. Smits, Miranda van Triest, Tobias B. Dansen, Marieke Visscher, Paulien E. Polderman, Marjolein J. Vliem, Holger Rehmann, and Boudewijn M. T. Burgering

PAGE 21733:

In Fig. 2F, the MLK3 input panel included an extra lane and therefore did not match the other panels or the figure labeling. This error has now been corrected.

PAGE 21734:

In Fig. 3B, the RalA-loading panel included an extra lane and therefore did not match the other panels. This error has now been corrected. These errors do not change the results or the conclusions of this work.



Authors are urged to introduce these corrections into any reprints they distribute. Secondary (abstract) services are urged to carry notice of these corrections as prominently as they carried the original abstracts.