

SCIENTIFIC REPORTS



OPEN

Precision Medicine: Genetic Repair of Retinitis Pigmentosa in Patient-Derived Stem Cells

Alexander G. Bassuk¹, Andrew Zheng², Yao Li², Stephen H. Tsang² & Vinit B. Mahajan³

Received: 30 September 2015

Accepted: 22 December 2015

Published: 27 January 2016

Induced pluripotent stem cells (iPSCs) generated from patient fibroblasts could potentially be used as a source of autologous cells for transplantation in retinal disease. Patient-derived iPSCs, however, would still harbor disease-causing mutations. To generate healthy patient-derived cells, mutations might be repaired with new gene-editing technology based on the bacterial system of *clustered regularly interspersed short palindromic repeats* (CRISPR)/Cas9, thereby yielding grafts that require no patient immunosuppression. We tested whether CRISPR/Cas9 could be used in patient-specific iPSCs to precisely repair an *RPGR* point mutation that causes X-linked retinitis pigmentosa (XLRP). Fibroblasts cultured from a skin-punch biopsy of an XLRP patient were transduced to produce iPSCs carrying the patient's c.3070G > T mutation. The iPSCs were transduced with CRISPR guide RNAs, Cas9 endonuclease, and a donor homology template. Despite the gene's repetitive and GC-rich sequences, 13% of *RPGR* gene copies showed mutation correction and conversion to the wild-type allele. This is the first report using CRISPR to correct a pathogenic mutation in iPSCs derived from a patient with photoreceptor degeneration. This important proof-of-concept finding supports the development of personalized iPSC-based transplantation therapies for retinal disease.

Stem cell-derived cell transplantation in the eye is one therapy being explored for inherited retinal degenerations such as retinitis pigmentosa (RP). Recent clinical trials evaluating allogeneic retinal grafts derived from human embryonic stem cells (hESCs) show the procedure to be safe and potentially effective¹. However, hESC-based treatments involve the controversial use of human embryos and pose a risk of immune-mediated rejection. Using a patient's own cells for transplantation would avoid these pitfalls and is possible with induced pluripotent stem cells (iPSCs). Through established protocols², fibroblasts from a skin biopsy can be returned to a pluripotent state and serve as a renewable, autologous source of replacement cells that avoids the ethical complications of hESCs.

Although the original disease-causing mutation would still be present in patient iPSCs, precise mutation correction is possible through gene editing techniques adapted from the bacterial *clustered regularly interspersed short palindromic repeats* (CRISPR)/Cas9 system³. The advantage of CRISPR is that its specificity depends largely on a guide RNA (gRNA) that can be readily programmed to target different genomic loci. In this study, we generated iPSCs from a patient with a mutation in the *retinitis pigmentosa GTPase regulator* (*RPGR*) gene, which causes an aggressive, X-linked variant of RP (XLRP). We tested whether CRISPR could precisely edit the pathogenic mutation and produce gene-corrected iPSCs for eventual use in autologous transplantation.

Methods

All experimental protocols, including informed consent were approved by the Institutional Review Board approval (AAAF1849) at Columbia University were obtained and all experiments were performed in accordance with relevant approved guidelines and regulations. Informed consent was obtained for all subjects. Autofluorescent imaging and optical coherence tomography were performed as described⁴. To generate iPSCs, dermal fibroblasts were cultured from the skin biopsy sample and transduced according to previously described protocols⁵. Pluripotency was demonstrated by teratoma assay conducted in immunodeficient mice (Charles River, Wilmington, MA) and immunocytochemistry staining for pluripotency markers.

¹Department of Pediatrics, University of Iowa, Iowa City, IA, USA. ²The Bernard & Shirlee Brown Glaucoma Laboratory, Departments of Ophthalmology, Pathology & Cell Biology, Institute of Human Nutrition, College of Physicians & Surgeons, Columbia University, New York, NY, USA. ³Department of Ophthalmology and Visual Sciences, University of Iowa, Iowa City, IA, USA. Correspondence and requests for materials should be addressed to V.B.M. (email: mahajanlab@gmail.com)

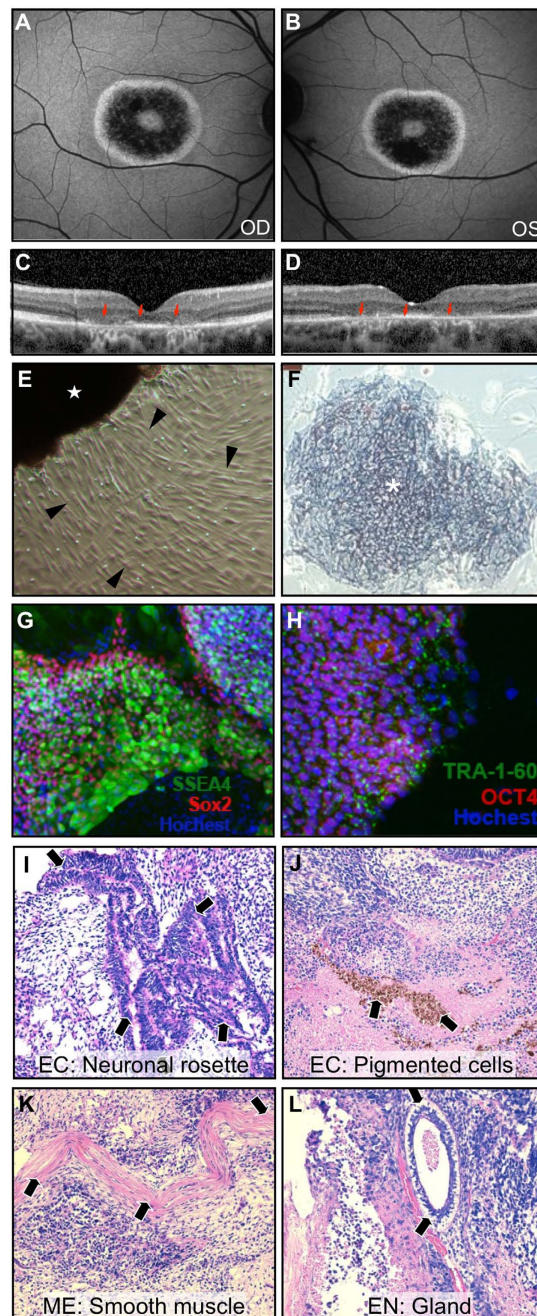


Figure 1. Clinical findings and iPSCs from an adult male XLRP patient. Autofluorescence imaging of the patient's [A] right and [B] left eyes shows hyperautofluorescent bull's-eye lesions in the macula corresponding to [C,D] loss of photoreceptor layers (red arrows) on optical coherence tomography. [E] A skin punch biopsy sample (star) was taken from the patient and used to culture fibroblasts (arrowheads) that were then transfected with transcription factors to yield efficient formation of [F] iPSC colonies (asterisk) that stain positively for alkaline phosphatase. With immunocytochemistry and fluorescence microscopy, expression of pluripotency markers [G] SSEA4, Sox2, and [H] TRA-1-60 and OCT4 is also detected. iPSCs injected into a severe combined immunodeficiency (SCID) mouse formed teratomas that were found on histology to contain cell types derived from all three germ layers: [I,J] neuronal rosettes and pigmented cells from the ectoderm (EC), [K] smooth muscle cells from the mesoderm (ME), and [L] gland cells from the endoderm (EN). The expression of pluripotency markers in the patient-derived cells and the ability to generate differentiated cells from all three primordial germ layers confirms that patient iPSCs are pluripotent.

CRISPR gRNAs were selected to minimize the off-target profile and to maximize the degree of homology with a target sequence directly centered on the mutation site. Candidates g58 and g59, (G58: GAAGTGAAGGGGAGGTGGAAGG) and g59 (G59: AAGTGAAGGGGAGGTGGAAGGG), were each

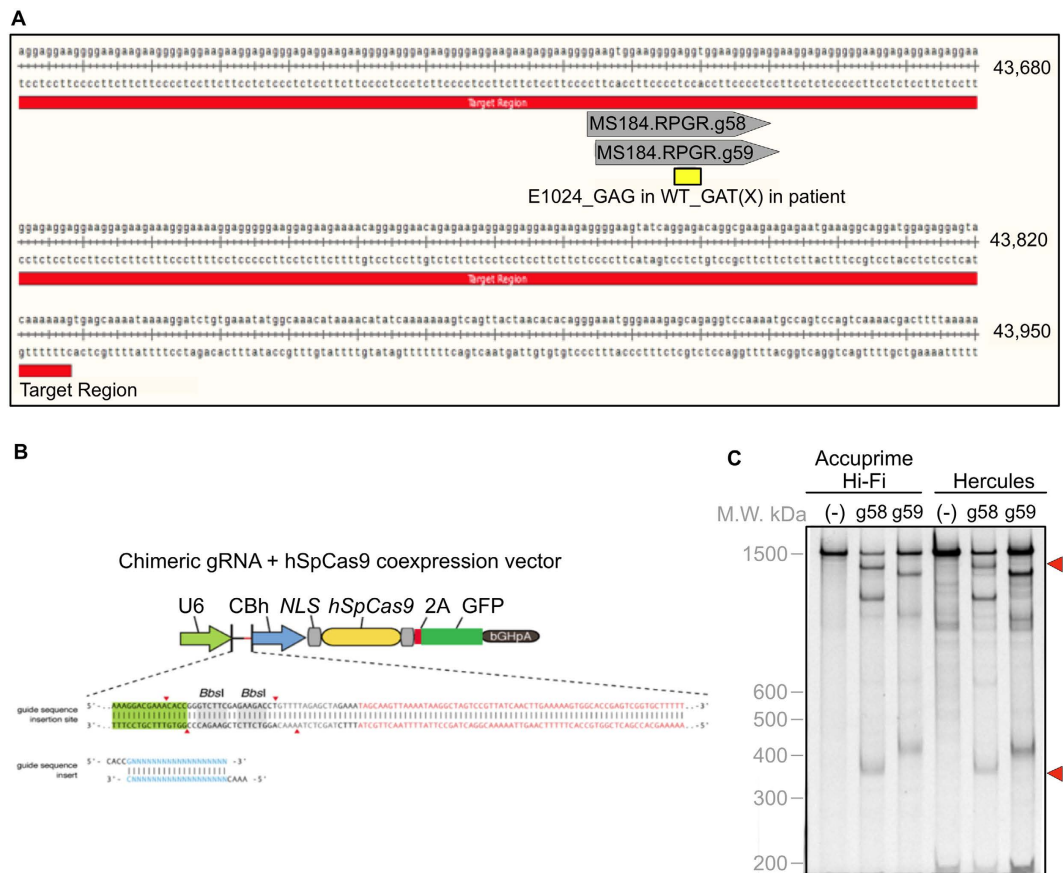


Figure 2. Validating gRNAs for gene targeting. [A] Two candidate gRNAs, g58 and g59, were selected based on their precise specificity for the mutation site within the ORF15 region of *RPGR*. [B] gRNAs were inserted into a combined expression vector alongside Cas9. The gRNA/Cas9 construct was transfected into HEK293 cells and the *RPGR* gene was amplified by PCR using both AccuPrime high fidelity *taq* polymerase as well as Herculese II polymerase (due to the GC-rich content of ORF15). [C] An *in vitro* SURVEYOR assay (Transgenomic, Omaha, NE) of the PCR products shows that g58 is more effective at directing cleavage by Cas9 (bands for the expected cleavage products are indicated by red arrowheads).

inserted into the gRNA/Cas9 expression vector pBT-U6-Cas9-2A-GFP and transfected into a 293 cell line. Genomic DNA from test cells was amplified by PCR using primers for the *RPGR* region, and the PCR products were analyzed by the SURVEYOR[®] assay (Transgenomic, Omaha, NE) for DNA cleavage activity. The expression plasmid containing the g58 sequence and Cas9 were then transfected into the patient-derived C1145-11* iPSC line alongside a single-stranded donor oligonucleotide (ssODN) template. Ten days after transfection, cells were collected for PCR followed by targeted amplicon sequencing to assess for gene correction in the *open reading frame-15* (ORF15) region containing the mutation. Deep sequencing templates were obtained by PCR of the genomic sequence, which also detects some non-specific PCR products (not apparent on the gel) due to the very high deep sequencing coverage. These non-specific sequences were categorized under “non-specific/error”. Cells not transfected were used as controls.

Results

We reported previously on the diagnosis of *RPGR*-associated XLRP in two brothers with significant vision loss⁶. Fundus examination and imaging showed a bull’s eye lesion with photoreceptor cell death near the fovea (Fig. 1A–D). Whole exome sequencing with Sanger sequencing confirmation uncovered a novel *RPGR* mutation (c.3070G > T, pGlu1024X) within the ORF15 exon⁶, a lengthy and repetitive, purine-rich region of the gene that accounts for >60% of all XLRP mutations⁷. We then cultured fibroblasts from a skin-punch biopsy and transformed them into patient-specific iPSCs. We confirmed that they were capable of differentiating into all three germ layers and expressed the pluripotency markers Oct-4, Sox2, SSEA-4, TRA-1-60, and alkaline phosphatase (Fig. 1E–L). In this state, they can be induced into retinal cells, but a critical limiting factor for transplantation is that they still carry a disease-causing mutation.

Next, we screened 21 gRNAs with high specificity to the region containing the patient’s *RPGR* mutation (see Supplementary Table). Two candidates were separately inserted into an expression vector also containing the Cas9 endonuclease responsible for mediating target DNA cleavage. A SURVEYOR[®] assay (Transgenomic, Omaha, NE) showed that one candidate, g58, had relatively high activity for the mutation site (Fig. 2). Because

and more sustained rescue in humans at comparable vector doses, suggesting that interspecies genetic differences could limit translation to humans. These and other limits of gene therapy—such as its relative inability to treat dominantly inherited or late-stage disease—might be better addressed through a regenerative gene-corrected iPSC transplantation approach.

The 13% correction rate that we achieved is comparable to other studies of homology-directed CRISPR editing¹¹, and exceeds previous iPSC gene editing studies reporting correction rates closer to 1%¹². Such a rate can provide sufficient therapeutic cells, but gene-editing technology is also rapidly improving. The *piggyBac* transposon is a mobile genetic element that can insert and excise exogenous constructs in a “footprint free” manner for CRISPR in iPSCs¹¹. Minimizing error-prone non-homologous end-joining at DNA cleavage sites through inhibition of DNA ligase IV can also increase the yield of repaired cells¹³. Definitive analysis of off-targeting rates will be required before eventual clinical use. With repaired patient-specific iPSCs in hand, the next step for iPSCs transplantation therapy is differentiating clonally corrected iPSCs into photoreceptors capable of integrating within the retina. Although a number of challenges remain, significant progress has been made in preclinical transplantation experiments using post-mitotic photoreceptor precursor cells or iPSC-derived *en bloc* retinal tissue^{14,15}.

Conclusions

Here, we report that patient-derived iPSCs harboring a pathogenic RP mutation are amenable to precise correction by CRISPR/Cas9 gene editing. Our finding represents a concrete first step towards combining CRISPR/Cas9-mediated gene editing with autologous iPSCs to develop a personalized transplantation strategy adaptable to a wide array of retinal diseases.

References

- Schwartz, S. D. *et al.* Human embryonic stem cell-derived retinal pigment epithelium in patients with age-related macular degeneration and Stargardt's macular dystrophy: follow-up of two open-label phase 1/2 studies. *Lancet*. **385**, 509–516 (2015).
- Takahashi, K. *et al.* Induction of pluripotent stem cells from adult human fibroblasts by defined factors. *Cell*. **131**, 861–872 (2007).
- Jinek, M. *et al.* A programmable dual-RNA-guided DNA endonuclease in adaptive bacterial immunity. *Science*. **337**, 816–821 (2012).
- Marsiglia, M. *et al.* Quantitative autofluorescence as a clinical tool for expedited differential diagnosis of retinal degeneration. *JAMA Ophthalmol*. **133**, 219–220 (2015).
- Lin, T. *et al.* A chemical platform for improved induction of human iPSCs. *Nat. Methods*. **6**, 805–808 (2009).
- Bassuk, A. G., Sujirakul, T., Tsang, S. H. & Mahajan, V. B. A novel RPGR mutation masquerading as Stargardt disease. *Br. J. Ophthalmol*. **98**, 709–711 (2014).
- Vervoort, R. *et al.* Mutational hot spot within a new RPGR exon in X-linked retinitis pigmentosa. *Nat. Genet*. **25**, 462–466 (2000).
- Kirschner, R. *et al.* DNA sequence comparison of human and mouse retinitis pigmentosa GTPase regulator (RPGR) identifies tissue-specific exons and putative regulatory elements. *Hum. Genet*. **109**, 271–278 (2001).
- Bainbridge, J. W. *et al.* Effect of gene therapy on visual function in Leber's congenital amaurosis. *N Engl J Med*. **358**, 2231–2239 (2008).
- Bainbridge, J. W. *et al.* Long-term effect of gene therapy on Leber's congenital amaurosis. *N Engl J Med*. **372**, 1887–1897 (2015).
- Xie, F. *et al.* Seamless gene correction of beta-thalassemia mutations in patient-specific iPSCs using CRISPR/Cas9 and piggyBac. *Genome Res*. **24**, 1526–1533 (2014).
- Yang, L. *et al.* Optimization of scarless human stem cell genome editing. *Nucleic Acids Res*. **41**, 9049–9061 (2013).
- Chu, V. T. *et al.* Increasing the efficiency of homology-directed repair for CRISPR-Cas9-induced precise gene editing in mammalian cells. *Nat. Biotechnol*. **33**, 543–548 (2015).
- MacLaren, R. E. *et al.* Retinal repair by transplantation of photoreceptor precursors. *Nature*. **444**, 203–207 (2006).
- Assawachananont, J. *et al.* Transplantation of embryonic and induced pluripotent stem cell-derived 3D retinal sheets into retinal degenerative mice. *Stem Cell Reports*. **2**, 662–674 (2014).

Acknowledgements

This research was supported by the Cure RPGR Fund. VBM is supported by NIH grants [K08EY020530, R01EY024665, R01EY025225, R01EY024698 and R21AG050437], and Doris Duke Charitable Foundation Grant #:2013103, and Research to Prevent Blindness (RPB), New York, NY. The Barbara & Donald Jonas Stem Cell & Regenerative Medicine Laboratory and Bernard & Shirlee Brown Glaucoma Laboratory is supported by NIH core grants 5P30CA013696 and 5P30EY019007, unrestricted funds from RPB, New York, NY, USA. S.H.T. is a member of the RD-CURE Consortium and is supported by Tistou and Charlotte Kerstan Foundation, R01EY018213, New York State C029572, the RPB Physician-Scientist Award, the Foundation Fighting Blindness New York Regional Research Center Grant (C-NY05-0705-0312), the Joel Hoffman Fund, Charles Culpeper Scholarship, Irma T. Hirsch Charitable Trust, Gebroe Family Foundation, and by Foundation Fighting Blindness grant CF-CL-0613-0614-COLU. None of the above listed funding organizations played any role in the design or conduct of the study; data collection, management, analysis, or interpretation; preparation, review, or approval of the manuscript; or the decision to submit the manuscript for publication.

Author Contributions

V.M. had full access to all the data in the study and takes responsibility for the integrity of the data and the accuracy of the data analysis. Study concept and design: A.B., S.T. and V.M. Acquisition, analysis, or interpretation of data: A.B., A.Z., Y.L., S.T. and V.M. Drafting of the manuscript: A.Z., A.B., S.T. and V.M. Critical revision of the manuscript for important intellectual content: A.Z., A.B., V.M. and S.T. Administrative, technical, or material support: A.B., S.T. and V.M. Study supervision: A.B. and V.M.

Additional Information

Supplementary information accompanies this paper at <http://www.nature.com/srep>

Competing financial interests: The authors declare no competing financial interests.

How to cite this article: Bassuk, A. G. *et al.* Precision Medicine: Genetic Repair of Retinitis Pigmentosa in Patient-Derived Stem Cells. *Sci. Rep.* **6**, 19969; doi: 10.1038/srep19969 (2016).



This work is licensed under a Creative Commons Attribution 4.0 International License. The images or other third party material in this article are included in the article's Creative Commons license, unless indicated otherwise in the credit line; if the material is not included under the Creative Commons license, users will need to obtain permission from the license holder to reproduce the material. To view a copy of this license, visit <http://creativecommons.org/licenses/by/4.0/>