



HHS Public Access

Author manuscript

JAMA Intern Med. Author manuscript; available in PMC 2016 June 01.

Published in final edited form as:

JAMA Intern Med. 2015 June ; 175(6): 1037–1047. doi:10.1001/jamainternmed.2015.0930.

Corresponding Author: Bjørn O. Åsvold, MD, PhD, Department of Public Health, Norwegian University of Science and Technology, Postboks 8905 MTFB, N-7491 Trondheim, Norway (bjorn.o.avsold@ntnu.no).

Author Contributions: Dr Åsvold had full access to all the data in the study and takes responsibility for the integrity of the data and the accuracy of the data analysis.

Study concept and design: Åsvold, Bjørø, Bauer, Ferrucci, Gussekloo, Maciel, Newman, Razvi, Westendorp, Rodondi.

Acquisition, analysis, or interpretation of data: Åsvold, Bjørø, Bremner, Cappola, Ceresini, den Elzen, Franco, Franklyn, Gussekloo, Iervasi, Imaizumi, Kearney, Khaw, Maciel, Peeters, Psaty, Razvi, Sgarbi, Stott, Trompet, Vanderpump, Völzke, Walsh, Westendorp, Rodondi.

Drafting of the manuscript: Åsvold.

Critical revision of the manuscript for important intellectual content: Vatten, Bjørø, Bauer, Bremner, Cappola, Ceresini, den Elzen, Ferrucci, Franco, Franklyn, Gussekloo, Iervasi, Imaizumi, Kearney, Khaw, Maciel, Newman, Peeters, Psaty, Razvi, Sgarbi, Stott, Trompet, Vanderpump, Völzke, Walsh, Westendorp, Rodondi.

Statistical analysis: Åsvold, Rodondi.

Obtained funding: Åsvold, Ferrucci, Khaw, Maciel, Newman, Sgarbi, Völzke, Walsh, Westendorp, Rodondi.

Administrative, technical, or material support: Bjørø, Ceresini, den Elzen, Ferrucci, Franco, Gussekloo, Khaw, Newman, Peeters, Psaty, Trompet, Völzke.

Study supervision: Vatten, Bjørø, Gussekloo, Stott, Westendorp, Rodondi.

Supplemental content at jamainternalmedicine.com

Conflict of Interest Disclosures: Dr Peeters has received lecture and consultancy fees from Genzyme Europe. No other disclosures were reported.

The Thyroid Studies Collaboration: Participating studies of the Thyroid Studies Collaboration include the following: *United States:* Health, Aging, and Body Composition Study, Cardiovascular Health Study, and Osteoporotic Fractures in Men (MrOS) Study. *Europe:* Whickham Survey, Rotterdam Study, Birmingham Study, Leiden 85-Plus Study, Pisa cohort, HUNT Study (Nord-Trøndelag Health Study), EPIC-Norfolk Study, Study of Health in Pomerania (SHIP), PROSPER trial, and InCHIANTI. *Australia:* Busselton Health Study. *Asia:* Nagasaki Adult Health Study. *South America:* Brazilian Thyroid Study. *Members of the Executive Committee:* Nicolas Rodondi, MD, MAS (Department of General Internal Medicine, Inselspital, University of Bern, Bern, Switzerland); Jacobijn Gussekloo, MD, PhD (Department of Public Health and Primary Care, Leiden University Medical Center, Leiden, the Netherlands); Douglas C. Bauer, MD (Department of Medicine and Department of Epidemiology and Biostatistics, University of California, San Francisco); Anne R. Cappola, MD, ScM (Division of Endocrinology, Diabetes, and Metabolism, Department of Medicine, School of Medicine, University of Pennsylvania, Philadelphia); and Robin P. Peeters, MD, PhD (Rotterdam Thyroid Center, Department of Internal Medicine, Erasmus Medical Center, and Department of Epidemiology, Erasmus MC, University Medical Center Rotterdam, Rotterdam, the Netherlands). *Members of the Steering Committee:* Bjørn O. Åsvold, MD, PhD (Department of Public Health, Norwegian University of Science and Technology, and Department of Endocrinology, St. Olavs Hospital, Trondheim University Hospital, Trondheim, Norway); John P. Walsh, MBBS, FRACP, PhD (Department of Endocrinology and Diabetes, Sir Charles Gairdner Hospital, Nedlands, and School of Medicine and Pharmacology, The University of Western Australia, Crawley, Western Australia); Jayne A. Franklyn, MD, PhD, FRCP, FMedSci (School of Clinical and Experimental Medicine, College of Medical and Dental Sciences, University of Birmingham, Birmingham, England); Giorgio Iervasi, MD (National Council Research Institute of Clinical Physiology/Tuscany Region G. Monasterio Foundation, Pisa, Italy); Misa Imaizumi, MD, PhD (Department of Clinical Studies, Radiation Effects Research Foundation, Nagasaki, Japan); Salman Razvi, MD, FRCP (Department of Endocrinology, Gateshead Health Foundation NHS Trust, Gateshead, England); Kay-Tee Khaw, MD (Department of Public Health and Primary Care, University of Cambridge, Cambridge, England); Henry Völzke, MD (Institute for Community Medicine, Study of Health in Pomerania/Clinical-Epidemiological Research and German Centre of Cardiovascular Research, University of Greifswald, Greifswald, Germany); José A. Sgarbi, MD (Division of Endocrinology, Department of Medicine, Federal University of São Paulo, São Paulo, and Division of Endocrinology, Faculdade de Medicina de Marília, Marília, Brazil); Rudi G. J. Westendorp, MD, PhD (Department of Cardiology, Leiden University Medical Center, and Netherlands Consortium for Healthy Aging, Leiden, the Netherlands, and Department of Public Health, University of Copenhagen, Copenhagen, Denmark); and Graziano Ceresini, MD, PhD (Department of Clinical and Experimental Medicine, Geriatric Endocrine Unit, University Hospital of Parma, Parma, Italy). *Members of the Data Management Group:* Wendy P. J. den Elzen, PhD (Department of Public Health and Primary Care, Leiden University Medical Center, Leiden, the Netherlands); Tinh-Hai Collet, MD (Service of Endocrinology, Diabetes, and Metabolism, University Hospital of Lausanne, Lausanne, Switzerland, and University of Cambridge Metabolic Research Laboratories, Wellcome Trust-Medical Research Council Institute of Metabolic Science, Addenbrooke's Hospital, Cambridge, United Kingdom); Bruno da Costa, PhD (Berliner Institut für Hausarztmedizin, University of Bern, Bern, Switzerland); Christine Baumgartner, MD (Department of General Internal Medicine, Inselspital, University of Bern, Bern, Switzerland); Manuel Raphael Blum, MD (Department of General Internal Medicine, Inselspital, University of Bern, Bern, Switzerland); and Hendrika Anette van Dorland, PD, DrSc (Department of General Internal Medicine, Inselspital, University of Bern, Bern, Switzerland).

Thyroid Function Within the Normal Range and Risk of Coronary Heart Disease:

An Individual Participant Data Analysis of 14 Cohorts

Bjørn O. Åsvold, MD, PhD, Lars J. Vatten, MD, PhD, Trine Bjørø, MD, PhD, Douglas C. Bauer, MD, Alexandra Bremner, PhD, Anne R. Cappola, MD, ScM, Graziano Ceresini, MD, PhD, Wendy P. J. den Elzen, PhD, Luigi Ferrucci, MD, PhD, Oscar H. Franco, MD, PhD, Jayne A. Franklyn, MD, PhD, FRCP, FMedSci, Jacobijn Gussekloo, MD, PhD, Giorgio Iervasi, MD, Misa Imaizumi, MD, PhD, Patricia M. Kearney, MD, PhD, Kay-Tee Khaw, MD, Rui M. B. Maciel, MD, Anne. B. Newman, MD, MPH, Robin P. Peeters, MD, PhD, Bruce M. Psaty, MD, PhD, Salman Razvi, MD, FRCP, José A. Sgarbi, MD, David J. Stott, MD, Stella Trompet, PhD, Mark P. J. Vanderpump, MD, FRCP, Henry Völzke, MD, John P. Walsh, MBBS, FRACP, PhD, Rudi G. J. Westendorp, MD, PhD, and Nicolas Rodondi, MD, MAS for the Thyroid Studies Collaboration

Department of Public Health, Norwegian University of Science and Technology, Trondheim (Åsvold, Vatten); Department of Endocrinology, St Olavs Hospital, Trondheim University Hospital, Trondheim, Norway (Åsvold); Department of Epidemiology, Harvard School of Public Health, Harvard University, Boston, Massachusetts (Vatten); Department of Medical Biochemistry, Oslo University Hospital, Oslo, Norway (Bjørø); Faculty of Medicine, University of Oslo, Oslo, Norway (Bjørø); Department of Medicine, University of California, San Francisco (Bauer); Department of Epidemiology and Biostatistics, University of California, San Francisco (Bauer); School of Population Health, The University of Western Australia, Crawley (Bremner); Division of Endocrinology, Diabetes, and Metabolism, Department of Medicine, School of Medicine, University of Pennsylvania, Philadelphia (Cappola); Department of Clinical and Experimental Medicine, Geriatric Endocrine Unit, University Hospital of Parma, Parma, Italy (Ceresini); Department of Public Health and Primary Care, Leiden University Medical Center, Leiden, the Netherlands (den Elzen, Gussekloo); National Institute on Aging, Baltimore, Maryland (Ferrucci); Department of Epidemiology, Erasmus MC, University Medical Center Rotterdam, Rotterdam, the Netherlands (Franco, Peeters); School of Clinical and Experimental Medicine, College of Medical and Dental Sciences, University of Birmingham, Birmingham, England (Franklyn); National Council Research Institute of Clinical Physiology/Tuscany Region G. Monasterio Foundation, Pisa, Italy (Iervasi); Department of Clinical Studies, Radiation Effects Research Foundation, Nagasaki, Japan (Imaizumi); Department of Epidemiology and Public Health, University College Cork, Cork, Ireland (Kearney); Department of Public Health and Primary Care, University of Cambridge, Cambridge, England (Khaw); Division of Endocrinology, Department of Medicine, Federal University of São Paulo, São Paulo, Brazil (Maciel, Sgarbi); Graduate School of Public Health, University of Pittsburgh, Pittsburgh, Pennsylvania (Newman); Rotterdam Thyroid Center, Department of Internal Medicine, Erasmus Medical Center, Rotterdam, the Netherlands (Peeters); Cardiovascular Health Research Unit, Departments of Medicine, Epidemiology, and Health Services, University of Washington, Seattle (Psaty); Group Health Research Institute, Group Health Cooperative, Seattle, Washington (Psaty); Department of Endocrinology, Gateshead Health Foundation National Health Service Trust, Gateshead, England (Razvi);

Division of Endocrinology, Faculdade de Medicina de Marília, Marília, Brazil (Sgarbi); Institute of Cardiovascular and Medical Sciences, University of Glasgow, Glasgow, Scotland (Stott); Department of Gerontology and Geriatrics, Leiden University Medical Center, Leiden, the Netherlands (Trompet); Department of Cardiology, Leiden University Medical Center, Leiden, the Netherlands (Trompet, Westendorp); Department of Endocrinology, Royal Free Hospital, London, England (Vanderpump); Institute for Community Medicine, Study of Health in Pomerania/Clinical-Epidemiological Research and German Centre of Cardiovascular Research, University of Greifswald, Greifswald, Germany (Völzke); Department of Endocrinology and Diabetes, Sir Charles Gairdner Hospital, Nedlands, Western Australia (Walsh); School of Medicine and Pharmacology, The University of Western Australia, Crawley (Walsh); Netherlands Consortium for Healthy Aging, Leiden, the Netherlands (Westendorp); Department of Public Health, University of Copenhagen, Copenhagen, Denmark (Westendorp); Department of General Internal Medicine, Inselspital, University of Bern, Bern, Switzerland (Rodondi)

Abstract

Importance—Some experts suggest that serum thyrotropin levels in the upper part of the current reference range should be considered abnormal, an approach that would reclassify many individuals as having mild hypothyroidism. Health hazards associated with such thyrotropin levels are poorly documented, but conflicting evidence suggests that thyrotropin levels in the upper part of the reference range may be associated with an increased risk of coronary heart disease (CHD).

Objective—To assess the association between differences in thyroid function within the reference range and CHD risk.

Design, Setting, and Participants—Individual participant data analysis of 14 cohorts with baseline examinations between July 1972 and April 2002 and with median follow-up ranging from 3.3 to 20.0 years. Participants included 55 412 individuals with serum thyrotropin levels of 0.45 to 4.49 mIU/L and no previously known thyroid or cardiovascular disease at baseline.

Exposures—Thyroid function as expressed by serum thyrotropin levels at baseline.

Main outcomes and Measures—Hazard ratios (HRs) of CHD mortality and CHD events according to thyrotropin levels after adjustment for age, sex, and smoking status.

Results—Among 55 412 individuals, 1813 people (3.3%) died of CHD during 643 183 person-years of follow-up. In 10 cohorts with information on both nonfatal and fatal CHD events, 4666 of 48 875 individuals (9.5%) experienced a first-time CHD event during 533 408 person-years of follow-up. For each 1-mIU/L higher thyrotropin level, the HR was 0.97 (95% CI, 0.90-1.04) for CHD mortality and 1.00 (95% CI, 0.97-1.03) for a first-time CHD event. Similarly, in analyses by categories of thyrotropin, the HRs of CHD mortality (0.94 [95% CI, 0.74-1.20]) and CHD events (0.97 [95% CI, 0.83-1.13]) were similar among participants with the highest (3.50-4.49 mIU/L) compared with the lowest (0.45-1.49 mIU/L) thyrotropin levels. Subgroup analyses by sex and age group yielded similar results.

Conclusions and Relevance—Thyrotropin levels within the reference range are not associated with risk of CHD events or CHD mortality. This finding suggests that differences in thyroid function within the population reference range do not influence the risk of CHD. Increased CHD risk does not appear to be a reason for lowering the upper thyrotropin reference limit.

Hypothyroidism has been associated with atherosclerosis,¹ and evidence from large observational studies suggests that individuals with hypothyroidism may be at increased risk of coronary heart disease (CHD) events and CHD mortality.² Among people with apparently normal thyroid function, thyrotropin levels in the upper part of the reference range may indicate an early stage of hypothyroidism.³⁻⁶ In addition, such thyrotropin levels have been associated with an adverse cardiovascular risk profile that includes high levels of non-high-density lipoprotein cholesterol, triglycerides, blood pressure, and body mass index, as well as low levels of high-density lipoprotein cholesterol.⁷⁻¹¹ Therefore, it seems plausible that differences in thyroid function within the population reference range may be differentially associated with CHD risk. In support of this hypothesis, the results of one cohort study suggested that thyrotropin levels within the reference range may be positively associated with CHD mortality in women, but not in men.^{12,13} In contrast, the results of other studies do not suggest any association between thyrotropin levels within the reference range and the risk of CHD events,¹⁴ vascular mortality,¹⁵ or need for coronary revascularization.¹⁶

The definition of the clinically normal range for thyroid function is controversial. Some experts have suggested that the upper thyrotropin reference limit should be lowered from approximately 4.5 to 2.5 or 3.0 mIU/L since higher thyrotropin levels may indicate early-stage hypothyroidism.¹⁷ Others disagree,¹⁸⁻²¹ because many people with a healthy thyroid gland would thereby be classified with abnormal thyroid function, and there is no firm evidence that thyrotropin levels in the upper part of the reference range are associated with health consequences that would benefit from early recognition and treatment of hypothyroidism. Most research on such potential consequences has focused on CHD and its risk factors,¹¹ and a recent review concluded that there was good evidence for associations between higher thyrotropin levels within the reference range and cardiovascular risk factors and events.¹¹ However, most of this evidence comes from cross-sectional studies, which are inferior to prospective studies for causal inference. To clarify whether people with thyrotropin levels in the upper part of the reference range may be at increased risk of CHD, we performed a meta-analysis of individual participant data in 14 cohort studies included in the Thyroid Studies Collaboration consortium.^{2,22,23}

Methods

Cohorts

The Thyroid Studies Collaboration consists of cohorts with thyroid function measurements at baseline and prospective follow-up of CHD outcomes. Its original purpose was to examine CHD risk among people with subclinical thyroid dysfunction, and suitable cohorts for that purpose were identified through systematic literature searches of the MEDLINE and EMBASE databases from January 1, 1950, to June 30, 2011, as previously described.^{2,22} Among 13 cohorts identified in the searches, 2 were excluded from the present study either because all participants had cardiovascular disease at baseline²⁴ or owing to a lack of information on cardiovascular disease and smoking habits at baseline.¹⁵ Data from the remaining 11 cohorts^{12-14,25-34} were included, as well as from 3 additional cohorts³⁵⁻³⁷ that have recently joined the collaboration. The individual cohort studies were approved by their appropriate ethics boards, and the present study was approved by the Central Norway

Regional Committee for Medical and Health Research Ethics. Participants provided written or, in one cohort,²⁹ oral informed consent. In some cohorts, participants received minor financial compensation to cover expenses related to participation.

Each cohort provided individual-level information on thyroid function measurements, cardiovascular risk factors, and history of thyroid and cardiovascular disease and diabetes mellitus, as well as prospectively recorded information on CHD outcomes during follow-up. From all cohorts, we included participants with thyrotropin levels within the reference range and with no previously known thyroid disease (or use of thyroid medication) or cardiovascular disease at baseline. As previously explained^{2,22} and based on expert reviews^{21,38} and a 2010 consensus meeting within our consortium, we applied a common thyrotropin reference range of 0.45 to 4.49 mIU/L for all cohorts except for the Whickham Survey.^{31,34} In that cohort, we used a reference range of 0.5 to 5.9 mIU/L because the first-generation thyrotropin assay used in that study yields consistently higher levels than measurements of current assays.² Among 55 935 individuals who fulfilled the criteria for inclusion, we excluded 523 people (0.9%) without information on smoking habits or follow-up information, leaving a total of 55 412 participants for analysis.

We examined the risk of CHD mortality in all cohorts. In cohorts with information on both nonfatal and fatal CHD events, we also examined risks of a first-time CHD event (combined end point of CHD mortality, myocardial infarction, coronary artery revascularization, incident angina pectoris, or hospital diagnosis of CHD) and a first-time hard CHD event (combined end point of CHD mortality or myocardial infarction). Types of CHD event data available in each cohort are described in eTable 1 in the Supplement.

Statistical Analysis

For each cohort, we used separate Cox proportional hazard models to estimate the associations of thyrotropin levels with each CHD outcome. We then calculated pooled estimates across cohorts using random-effects models based on the variance model described by DerSimonian and Laird.^{39,40} Heterogeneity across cohorts was assessed by the I^2 statistic, which describes the proportion of the total variation across studies attributable to heterogeneity rather than to chance. We adjusted for age (by using attained age as the time scale), sex, and smoking status⁴¹ (never, former, or current smokers or, in one cohort,²⁹ ever-or never-smokers) at baseline as these characteristics may influence both thyroid function test results and CHD risk. We also analyzed women and men separately because in women, more often than in men, thyrotropin levels in the upper part of the reference range may indicate an early stage of hypothyroidism.^{3,4,6} Some evidence suggests that the association of hypothyroidism with CHD risk may be relatively stronger at younger ages²; therefore, we examined whether the associations differed by age at baseline (<65, 65-79, or 80 years). We analyzed thyrotropin both as a continuous variable and by categories, using equal width categories (0.45-1.49, 1.50-2.49, 2.50-3.49, and 3.50-4.49 mIU/L). For the Whickham Survey, analogous categories were considered to be 0.5 to 1.8, 1.9 to 3.2, 3.3 to 4.6, and 4.7 to 5.9 mIU/L. As reference, we used the lowest thyrotropin category, which is likely to have the lowest prevalence of preclinical autoimmune thyroid disease indicated by presence of thyroid peroxidase (TPO) antibodies.⁴

High thyrotropin levels may be more likely to indicate low thyroid function in people with TPO antibodies in serum.^{5,6} Among cohorts with TPO antibody measurements at baseline, we therefore estimated the risk of CHD by combinations of thyrotropin level (0.45-2.49 or 2.50-4.49 mIU/L) and TPO antibody status (positive or negative using study-specific cutoff points as reported in eTable 1 in the Supplement).

In addition, we examined risks of CHD outcomes by free thyroxine (FT₄) levels at baseline, analyzing FT₄ both as a continuous variable and by categories. Because the different FT₄ assays are not standardized and yield different reference limits,⁴² we used quartile categories based on the quartile distributions within each cohort. As reference, we used the highest quartile, which suggests relatively high thyroid function. After observing an association between FT₄ categories and CHD risk, we examined whether there was statistical evidence for a U-shaped association between FT₄ and CHD risk as expressed by the *P* value for the squared value of FT₄ levels.

We performed a set of sensitivity analyses to evaluate the robustness of the findings. First, because nonthyroidal illness may influence thyroid function test results,⁴³ we repeated the analyses after excluding the first 2 years of follow-up to reduce the influence that preclinical CHD at baseline could have on the results. Second, we repeated the analyses with statistical adjustment for body mass index at baseline (expressed by restricted cubic spline) because adiposity, in addition to being a possible mediator between thyroid function and CHD,¹⁰ may be a common cause of high thyrotropin levels and CHD.⁴⁴ Third, we excluded participants with diabetes mellitus at baseline since diabetes may be associated with thyroid dysfunction^{45,46} and silent CHD.⁴⁷ Fourth, we restricted the analyses to never-smokers to avoid residual confounding from smoking.⁴¹ Fifth, in cohorts with information on use of thyroid medication during follow-up, we examined whether hazard ratios (HRs) for CHD outcomes changed after exclusion of participants who began therapy with thyroid medication during follow-up. Sixth, we restricted the analyses to the 11 cohorts that were identified through the systematic literature searches. Seventh, we repeated the analyses after excluding the Study of Health in Pomerania cohort, which was formerly iodine deficient and had a substantially different study-specific reference range for thyrotropin (0.25-2.12 mIU/L).³⁰ Eighth, we repeated the analyses after excluding the Wickham Survey^{31,34} (which started follow-up in the 1970s) and the Leiden 85-Plus Study²⁷ (which only included participants aged 85 years). Ninth, we repeated the analysis of FT₄ and CHD risk after excluding participants with FT₄ levels outside the study-specific reference ranges reported in eTable 1 in the Supplement. Because thyroid function could influence the risk of CHD through thyroid hormone effects on blood pressure and cholesterol levels,¹ whenever associations with CHD outcomes were observed, we examined whether the HRs were altered by statistical adjustment for systolic blood pressure and total serum cholesterol levels at baseline. All analyses were performed using Stata, version 13.1 for Windows (StataCorp LP).

Results

Characteristics of the 14 cohorts are given in Table 1 and eTable 1 in the Supplement. Baseline characteristics by thyrotropin category are given in eTable 2 in the Supplement.

Among 55 412 individuals, 1813 people (3.3%) died of CHD during 643 183 person-years of follow-up. In one cohort of 763 individuals,³³ only 5 CHD deaths occurred; this cohort was excluded from further analyses. There was no association between thyrotropin levels and risk of CHD mortality. For each 1-mIU/L higher thyrotropin level at baseline, the HR for CHD mortality was 0.97 (95% CI, 0.90-1.04), with little heterogeneity across studies (I^2 , 36%) (Figure). The association did not differ by sex or age (Table 2).

Ten cohorts had information on both fatal and nonfatal CHD events. Among 48 875 individuals in these cohorts, 4666 people (9.5%) experienced a first-time CHD event during 533 408 person-years of follow-up. For each 1-mIU/L higher thyrotropin level at baseline, the HR for a first-time CHD event was 1.00 (95% CI, 0.97-1.03). The association was homogeneous across studies (I^2 , 0%) (Figure) and did not differ by sex or age (Table 2).

In 7 cohorts, the risk of hard CHD events (CHD mortality or myocardial infarction) could be examined, and 2488 (7.3%) of 34 256 individuals in these cohorts experienced a first-time hard CHD event during 356 400 person-years of follow-up. There was no association between thyrotropin levels and the risk of a first-time hard CHD event, and the HRs did not substantially differ from those of any CHD event (Table 2 and Figure).

The sensitivity analyses of thyrotropin levels and CHD risk yielded results similar to the main analysis (eTable 3 in the Supplement). We also examined CHD risk by categories of thyrotropin at baseline but found no associations with risk of CHD mortality or CHD events (Table 3).

Among cohorts with TPO antibody measurement at baseline, we examined the combined association of thyrotropin level and TPO antibody status with the risk of CHD mortality (4 cohorts), a first-time CHD event (3 cohorts), and a first-time hard CHD event (2 cohorts). There was no evidence that high (2.50-4.49 mIU/L) thyrotropin levels combined with TPO antibodies were associated with increased CHD risk compared with low (0.45-2.49 mIU/L) thyrotropin levels and no TPO antibodies (eTable 4 in the Supplement).

In addition, we examined associations of FT₄ levels at baseline with risk of CHD. We observed no linear associations of FT₄ levels with risk of CHD mortality (9 cohorts) or a first-time CHD event (6 cohorts) (eFigure in the Supplement), and the associations did not convincingly differ by sex or age (eTable 5 in the Supplement). In analyses by FT₄ categories, the risk of CHD mortality and CHD events did not substantially differ between participants with low (lowest quartile) and high (highest quartile) FT₄ levels (eTable 6 in the Supplement). However, the results suggested a U-shaped association between FT₄ level and CHD risk since participants with FT₄ levels in the second quartile had lower risks of CHD mortality (HR, 0.76 [95% CI, 0.57-0.99]) and CHD events (HR, 0.73 [95% CI, 0.58-0.94]) compared with participants with high (highest quartile) FT₄ levels. Nonetheless, the *P* value for squared FT₄ levels did not show statistically significant evidence of a U-shaped association of FT₄ level with CHD risk (*P* = .48 for CHD mortality and *P* = .22 for CHD events). Associations between FT₄ level and risk of hard CHD events could be examined only in 4 cohorts of elderly participants, but estimates were similar to those of any CHD event (eTable 5, eTable 6, and eFigure in the Supplement).

Sensitivity analyses of FT₄ levels and CHD risk yielded results similar to the main analysis (eTable 7 and eTable 8 in the Supplement), except that when the analysis was restricted to participants with FT₄ levels within the reference range, there was statistically significant evidence to suggest a U-shaped association between FT₄ and risk of CHD events (squared value of FT₄ levels, $P = .02$). The association of FT₄ categories with CHD risk remained essentially unchanged after adjustment for baseline levels of systolic blood pressure and total serum cholesterol levels (eTable 8 in the Supplement).

Discussion

In this individual participant data analysis of 55 412 people from 14 cohorts, differences in thyrotropin levels within the reference range were not associated with risk of CHD mortality or CHD events.

Associations between thyrotropin levels within the reference range and risk of CHD have been examined in a few cohort studies,¹²⁻¹⁶ 2 of which are included in the present individual participant data analysis.¹²⁻¹⁴ In one of these cohorts, each 1-mIU/L higher thyrotropin level at baseline was associated with a 37% higher risk of CHD mortality in women,¹² but there was no corresponding association in men and no association of thyrotropin with risk of hospitalization for myocardial infarction.^{12,13} In other cohorts, there were no associations of thyrotropin levels with risk of CHD events,¹⁴ vascular mortality,¹⁵ or coronary revascularizations.¹⁶

Compared with the previous cohort studies, a major strength of this individual participant data analysis is the large sample size, which enabled more precise risk estimates for both fatal and total CHD events. The use of individual-level data enabled similar classification of exposures and covariates across cohorts. In cohorts in which medication was recorded during follow-up, few participants initiated therapy with thyroid medication, and risk estimates for CHD were similar after exclusion of these individuals. Therefore, use of thyroid medication is not likely to have substantially influenced our results. The results of this meta-analysis strongly suggest that differences in thyrotropin levels within the population reference range are not associated with the risk of CHD and that the previously reported association between thyrotropin levels within the reference range and CHD mortality^{12,13} is likely to be a chance finding. A limitation of the present study is that only one measurement of thyroid function at baseline was available, and we could not specifically examine the risk of CHD among people whose thyrotropin level remained in the upper part of the reference range over time. Also, few cohorts included measurement of TPO antibodies, so the risk of CHD among people with thyrotropin levels in the upper part of the reference range combined with the presence of TPO antibodies could not be estimated with high precision.

Of the different measures of thyroid function, we emphasized serum thyrotropin levels in this study for 2 reasons. First, thyrotropin levels in the upper part of the reference range are sometimes a marker of early-stage hypothyroidism, as indicated by an increased prevalence of autoimmune thyroid disease and risk of future hypothyroidism.³⁻⁶ Second, serum thyrotropin is considered to be the most sensitive marker for change in thyroid function

since pituitary thyrotropin secretion responds to even slight changes in circulating thyroid hormone levels.⁴⁹ The discrepancy in our data between thyrotropin showing no association but FT₄ showing a possible U-shaped association with CHD risk was therefore unexpected. It has been suggested that serum thyrotropin, although a reflection of thyroid-pituitary feedback, may not reflect thyroid status in every organ.^{18,50} Under this assumption, FT₄ levels that are sensed as appropriate by the pituitary gland could be inappropriate for the vascular system and lead to increased risk of CHD similar to that seen in hypothyroid² or hyperthyroid²² individuals. However, there are several reasons to suspect that the association of FT₄ levels with CHD risk in our data may not be causal. First, FT₄ measurements may be affected by low albumin levels,⁵¹ which have been associated with increased CHD risk,⁵² and use of specific cardiovascular medications, such as aspirin, heparin, and furosemide.^{53,54} Second, the lack of robust statistical evidence, as expressed by *P* values for the squared value of FT₄ levels, suggests that the U-shaped association of FT₄ levels with CHD risk may be a chance finding. Further study of the role of FT₄ in disease risk among people with clinically normal thyroid function is needed.

Controversy surrounds the definition of the reference range for thyrotropin,¹⁷⁻²¹ and it has been suggested that the upper reference limit should be lowered to 2.5 to 3.0 mIU/L.¹⁷ This approach would have a large effect on the number of people classified as having abnormal thyroid function. For example, approximately 8% to 14% of US adults without known thyroid disease would be reclassified as having abnormally high thyrotropin levels²⁰ that might necessitate follow-up and suggest a need for levothyroxine therapy. Unnecessary levothyroxine therapy is undesirable since many patients receive excessive levothyroxine doses (as indicated by low thyrotropin levels)^{55,56} that may increase their risk of atrial fibrillation and osteoporosis.⁵⁷ A large UK study⁵⁶ of new levothyroxine users between 2001 and 2009, excluding those receiving levothyroxine in association with hyperthyroidism, pituitary disease, thyroid surgery, pregnancy, or use of thyroid-altering medication, reported an increase in the use of levothyroxine for borderline elevated thyrotropin levels, and approximately 6% had a thyrotropin level of less than 4.0 mIU/L at the initiation of levothyroxine therapy. This finding suggests that levothyroxine is being prescribed to many individuals in whom its clinical benefit is uncertain.

Knowledge about health hazards associated with thyrotropin in the upper part of the reference range is important to inform a lowering of the upper thyrotropin reference limit. Cardiovascular hazards have been suggested by cross-sectional studies⁷⁻¹¹ that found positive associations of thyrotropin with adverse lipid levels and higher blood pressure and body mass index. However, recent longitudinal evidence suggests that associations are very weak, if any, between thyrotropin levels within the reference range and future levels of serum lipids, blood pressure, and body mass index.^{58,59} In line with those findings, the present study provides prospective evidence indicating that individuals with thyrotropin levels in the upper part of the reference range are not at increased risk of CHD. The present results are also consistent with a previous Thyroid Studies Collaboration² analysis showing similar risk of CHD between people with mildly elevated serum thyrotropin levels (4.5-6.9 mIU/L) and people with thyrotropin within the reference range.

In this study, we examined associations between thyrotropin levels and future CHD among people without previously known cardiovascular disease. Our results do not inform whether thyrotropin levels measured after the clinical onset of cardiovascular disease may have prognostic value, as suggested by some evidence.⁶⁰ In addition, we did not examine whether levels of thyroid function tests within the reference ranges may be differentially associated with all-cause mortality^{16,61,62} or the risk of non-CHD outcomes, such as atrial fibrillation,^{62,63} heart failure,⁶² fractures,⁶⁴ dementia,^{62,65} chronic kidney disease⁶⁶ or cancer mortality,⁶¹ as suggested in some prospective studies. However, except for a modestly increased risk of chronic kidney disease,⁶⁶ these studies did not show increased disease risk among people with thyrotropin levels in the upper part of the reference range and thus do not provide evidence in support of lowering the upper thyrotropin reference limit.

Conclusions

In this individual participant data analysis of 55 412 individuals from 14 cohorts, thyrotropin levels in the upper part of the reference range were not associated with an increased risk of CHD events or CHD mortality. This finding suggests that differences in thyroid function within the population reference range do not influence the risk of CHD. Increased risk of CHD does not appear to be a reason for lowering the upper thyrotropin reference limit.

Supplementary Material

Refer to Web version on PubMed Central for supplementary material.

Acknowledgments

Funding/Support: The Thyroid Studies Collaboration was supported by grants from the Swiss National Science Foundation (SNSF 320030-138267 and 320030-150025) and partially supported by a grant from the Swiss Heart Foundation (all to Dr Rodondi). Dr Åsvold is supported by the Research Council of Norway. The Whickham Survey was supported by the UK Department of Health. The Rotterdam Study is funded by Erasmus MC and Erasmus University, Rotterdam, the Netherlands; the Netherlands Organisation for Scientific Research; the Netherlands Organisation for the Health Research and Development; the Research Institute for Diseases in the Elderly; the Ministry of Education, Culture, and Science; the Ministry for Health, Welfare, and Sports; the European Commission; and the Municipality of Rotterdam. Maryam Kavousi, MD, PhD (Department of Epidemiology, Erasmus MC, University Medical Center Rotterdam, Rotterdam, the Netherlands), is supported by the AXA Research Fund. Maarten J. G. Leening, MD, MSc, and Bruno H. Stricker, MMed, PhD (both with Department of Epidemiology, Erasmus MC, University Medical Center Rotterdam, Rotterdam, the Netherlands), are supported by a grant from the Netherlands Organisation for Health Research and Development (HTA grant 80.82500.98.10208). Dr Franco works in ErasmusAGE, a center for aging research across the life course funded by Nestlé Nutrition (Nestec Ltd), Metagenics Inc, and AXA. The Leiden 85-Plus Study was partly funded by the Dutch Ministry of Health, Welfare, and Sports. The Nagasaki Adult Health Study was supported by the Radiation Effects Research Foundation, Hiroshima and Nagasaki, Japan, a private, nonprofit foundation funded by the Japanese Ministry of Health, Labor, and Welfare and the US Department of Energy, the latter in part through the National Academy of Sciences. The Health, Aging, and Body Composition Study was supported by National Institute on Aging (NIA) contracts N01-AG-6-2101, N01-AG-6-2103, N01-AG-6-2106; NIA grant R01-AG028050; and National Institute of Nursing Research grant R01-NR012459. The research was supported in part by the Intramural Research Program of the NH NIA. Principal investigators and staff of the Health, Aging, and Body Composition Study are Anne B. Newman, MD, MPH, and Diane Ives, MPH, University of Pittsburgh; Suzanne Satterfield, MD, DrPH, and Jan Elam, BS, University of Tennessee, Memphis; Steven R. Cummings, MD, Michael C. Nevitt, PhD, and Susan M. Rubin, MPH, University of California, San Francisco; and Tamara B. Harris, MD, and Melissa E. Garcia, MPH, National Institute on Aging. The Cardiovascular Health Study (CHS) is supported by contracts HHSN268201200036C, HHSN268200800007C, N01 HC55222, N01HC85079, N01HC85080, N01HC85081, N01HC85082, N01HC85083, and N01HC85086 as well as grant HL080295 from the National Heart, Lung, and Blood Institute, with additional contribution from the National Institute of Neurological

Disorders and Stroke. Additional support was provided through AG-032317 and AG-023629 from the NIA (see also <https://chs-nhlbi.org/>). The Nord-Trøndelag Health Study (HUNT Study) is a collaborative effort of HUNT Research Center, Faculty of Medicine, Norwegian University of Science and Technology; Nord-Trøndelag County Council; Central Norway Health Authority; and the Norwegian Institute of Public Health. Data were provided by the HUNT Research Center, Statistics Norway, and the Department for Research and Development, Nord-Trøndelag Hospital Trust. The thyroid function testing in the HUNT Study was financially supported by Wallac Oy (Turku, Finland). The EPIC-Norfolk Study was supported by research grants from the Medical Research Council UK and Cancer Research UK. The Brazilian Thyroid Study was supported by an unrestricted grant from the São Paulo State Research Foundation (Fundação de Amparo à Pesquisa do Estado de São Paulo grant 6/59737-9 to Dr Maciel). The Study of Health in Pomerania is part of the Community Medicine Research net of the University of Greifswald, Germany, which is funded by the Federal Ministry of Education and Research, the Ministry of Cultural Affairs, and the Social Ministry of the Federal State of Mecklenburg-West Pomerania. Analyses were further supported by a grant of the German Research Foundation (DFG Vo 955/12-1). The Prospective Study of Pravastatin in the Elderly at Risk study was supported by an investigator-initiated grant obtained from Bristol-Myers Squibb. Dr Jukema is an established clinical investigator of the Netherlands Heart Foundation (grant 2001 D 032). The Osteoporotic Fractures in Men Study is supported by National Institutes of Health (NIH) funding. The following institutes provide support: the NIA, the National Institute of Arthritis and Musculoskeletal and Skin Diseases, the National Center for Advancing Translational Sciences, and NIH Roadmap for Medical Research under the following grant numbers: U01 AG027810, U01 AG042124, U01 AG042139, U01 AG042140, U01 AG042143, U01 AG042145, U01 AG042168, U01 AR066160, and UL1 TR000128.

Role of the Funder/Sponsor: The National Institute on Aging, which funded the Health, Aging, and Body Composition Study, and the Radiation Effects Research Foundation, which funded the Nagasaki Adult Health Study, reviewed and approved the manuscript. The other funding organizations had no role in the design and conduct of the study; collection, management, analysis, and interpretation of the data; preparation, review, or approval of the manuscript; and decision to submit the manuscript for publication.

References

1. Cappola AR, Ladenson PW. Hypothyroidism and atherosclerosis. *J Clin Endocrinol Metab.* 2003; 88(6):2438–2444. [PubMed: 12788839]
2. Rodondi N, den Elzen WP, Bauer DC, et al. Thyroid Studies Collaboration. Subclinical hypothyroidism and the risk of coronary heart disease and mortality. *JAMA.* 2010; 304(12):1365–1374. [PubMed: 20858880]
3. Åsvold BO, Vatten LJ, Midthjell K, Bjørø T. Serum TSH within the reference range as a predictor of future hypothyroidism and hyperthyroidism: 11-year follow-up of the HUNT Study in Norway. *J Clin Endocrinol Metab.* 2012; 97(1):93–99. [PubMed: 22049180]
4. Spencer CA, Hollowell JG, Kazarosyan M, Braverman LE. National Health and Nutrition Examination Survey III thyroid-stimulating hormone (TSH)-thyroperoxidase antibody relationships demonstrate that TSH upper reference limits may be skewed by occult thyroid dysfunction. *J Clin Endocrinol Metab.* 2007; 92(11):4236–4240. [PubMed: 17684054]
5. Vanderpump MP, Tunbridge WM, French JM, et al. The incidence of thyroid disorders in the community: a twenty-year follow-up of the Whickham Survey. *Clin Endocrinol (Oxf).* 1995; 43(1): 55–68. [PubMed: 7641412]
6. Walsh JP, Bremner AP, Feddema P, Leedman PJ, Brown SJ, O'Leary P. Thyrotropin and thyroid antibodies as predictors of hypothyroidism: a 13-year, longitudinal study of a community-based cohort using current immunoassay techniques. *J Clin Endocrinol Metab.* 2010; 95(3):1095–1104. [PubMed: 20097710]
7. Åsvold BO, Bjørø T, Nilsen TI, Vatten LJ. Association between blood pressure and serum thyroid-stimulating hormone concentration within the reference range: a population-based study. *J Clin Endocrinol Metab.* 2007; 92(3):841–845. [PubMed: 17200168]
8. Åsvold BO, Bjørø T, Vatten LJ. Association of serum TSH with high body mass differs between smokers and never-smokers. *J Clin Endocrinol Metab.* 2009; 94(12):5023–5027. [PubMed: 19846737]
9. Åsvold BO, Vatten LJ, Nilsen TI, Bjørø T. The association between TSH within the reference range and serum lipid concentrations in a population-based study: the HUNT study. *Eur J Endocrinol.* 2007; 156(2):181–186. [PubMed: 17287407]

10. Knudsen N, Laurberg P, Rasmussen LB, et al. Small differences in thyroid function may be important for body mass index and the occurrence of obesity in the population. *J Clin Endocrinol Metab.* 2005; 90(7):4019–4024. [PubMed: 15870128]
11. Taylor PN, Razvi S, Pearce SH, Dayan CM. Clinical review: a review of the clinical consequences of variation in thyroid function within the reference range. *J Clin Endocrinol Metab.* 2013; 98(9): 3562–3571. [PubMed: 23824418]
12. Åsvold BO, Bjørø T, Nilsen TI, Gunnell D, Vatten LJ. Thyrotropin levels and risk of fatal coronary heart disease: the HUNT study. *Arch Intern Med.* 2008; 168(8):855–860. [PubMed: 18443261]
13. Åsvold BO, Bjørø T, Platou C, Vatten LJ. Thyroid function and the risk of coronary heart disease: 12-year follow-up of the HUNT study in Norway. *Clin Endocrinol (Oxf).* 2012; 77(6):911–917. [PubMed: 22724581]
14. Walsh JP, Bremner AP, Bulsara MK, et al. Subclinical thyroid dysfunction as a risk factor for cardiovascular disease. *Arch Intern Med.* 2005; 165(21):2467–2472. [PubMed: 16314542]
15. Parle JV, Maisonneuve P, Sheppard MC, Boyle P, Franklyn JA. Prediction of all-cause and cardiovascular mortality in elderly people from one low serum thyrotropin result: a 10-year cohort study. *Lancet.* 2001; 358(9285):861–865. [PubMed: 11567699]
16. Pereg D, Tirosh A, Elis A, et al. Mortality and coronary heart disease in euthyroid patients. *Am J Med.* 2012; 125(8):826.e7–826.e12. [PubMed: 22608790]
17. Wartofsky L, Dickey RA. The evidence for a narrower thyrotropin reference range is compelling. *J Clin Endocrinol Metab.* 2005; 90(9):5483–5488. [PubMed: 16148345]
18. Brabant G, Beck-Peccoz P, Jarzab B, et al. Is there a need to redefine the upper normal limit of TSH? *Eur J Endocrinol.* 2006; 154(5):633–637. [PubMed: 16645008]
19. Laurberg P, Andersen S, Carlé A, Karmisholt J, Knudsen N, Pedersen IB. The TSH upper reference limit: where are we at? *Nat Rev Endocrinol.* 2011; 7(4):232–239. [PubMed: 21301488]
20. Surks MI, Goswami G, Daniels GH. The thyrotropin reference range should remain unchanged. *J Clin Endocrinol Metab.* 2005; 90(9):5489–5496. [PubMed: 16148346]
21. Surks MI, Ortiz E, Daniels GH, et al. Subclinical thyroid disease: scientific review and guidelines for diagnosis and management. *JAMA.* 2004; 291(2):228–238. [PubMed: 14722150]
22. Collet TH, Gussekloo J, Bauer DC, et al. Thyroid Studies Collaboration. Subclinical hyperthyroidism and the risk of coronary heart disease and mortality. *Arch Intern Med.* 2012; 172(10):799–809. [PubMed: 22529182]
23. Gencer B, Collet TH, Virgini V, et al. Thyroid Studies Collaboration. Subclinical thyroid dysfunction and the risk of heart failure events: an individual participant data analysis from 6 prospective cohorts. *Circulation.* 2012; 126(9):1040–1049. [PubMed: 22821943]
24. Iervasi G, Molinaro S, Landi P, et al. Association between increased mortality and mild thyroid dysfunction in cardiac patients. *Arch Intern Med.* 2007; 167(14):1526–1532. [PubMed: 17646607]
25. Boekholdt SM, Titan SM, Wiersinga WM, et al. Initial thyroid status and cardiovascular risk factors: the EPIC-Norfolk prospective population study. *Clin Endocrinol (Oxf).* 2010; 72(3):404–410. [PubMed: 19486022]
26. Cappola AR, Fried LP, Arnold AM, et al. Thyroid status, cardiovascular risk, and mortality in older adults. *JAMA.* 2006; 295(9):1033–1041. [PubMed: 16507804]
27. Gussekloo J, van Exel E, de Craen AJ, Meinders AE, Frölich M, Westendorp RG. Thyroid status, disability and cognitive function, and survival in old age. *JAMA.* 2004; 292(21):2591–2599. [PubMed: 15572717]
28. Hak AE, Pols HA, Visser TJ, Drexhage HA, Hofman A, Witteman JC. Subclinical hypothyroidism is an independent risk factor for atherosclerosis and myocardial infarction in elderly women: the Rotterdam Study. *Ann Intern Med.* 2000; 132(4):270–278. [PubMed: 10681281]
29. Imaizumi M, Akahoshi M, Ichimaru S, et al. Risk for ischemic heart disease and all-cause mortality in subclinical hypothyroidism. *J Clin Endocrinol Metab.* 2004; 89(7):3365–3370. [PubMed: 15240616]
30. Ittermann T, Haring R, Sauer S, et al. Decreased serum TSH levels are not associated with mortality in the adult northeast German population. *Eur J Endocrinol.* 2010; 162(3):579–585. [PubMed: 20007334]

31. Razvi S, Weaver JU, Vanderpump MP, Pearce SH. The incidence of ischemic heart disease and mortality in people with subclinical hypothyroidism: reanalysis of the Whickham Survey cohort. *J Clin Endocrinol Metab.* 2010; 95(4):1734–1740. [PubMed: 20150579]
32. Rodondi N, Newman AB, Vittinghoff E, et al. Subclinical hypothyroidism and the risk of heart failure, other cardiovascular events, and death. *Arch Intern Med.* 2005; 165(21):2460–2466. [PubMed: 16314541]
33. Sgarbi JA, Matsumura LK, Kasamatsu TS, Ferreira SR, Maciel RM. Subclinical thyroid dysfunctions are independent risk factors for mortality in a 7.5-year follow-up: the Japanese-Brazilian thyroid study. *Eur J Endocrinol.* 2010; 162(3):569–577. [PubMed: 19966035]
34. Vanderpump MP, Tunbridge WM, French JM, et al. The development of ischemic heart disease in relation to autoimmune thyroid disease in a 20-year follow-up study of an English community. *Thyroid.* 1996; 6(3):155–160. [PubMed: 8837320]
35. Ceresini G, Ceda GP, Lauretani F, et al. Thyroid status and 6-year mortality in elderly people living in a mildly iodine-deficient area: the Aging in the Chianti Area Study. *J Am Geriatr Soc.* 2013; 61(6):868–874. [PubMed: 23647402]
36. Nanchen D, Gussekloo J, Westendorp RG, et al. PROSPER Group. Subclinical thyroid dysfunction and the risk of heart failure in older persons at high cardiovascular risk. *J Clin Endocrinol Metab.* 2012; 97(3):852–861. [PubMed: 22238391]
37. Waring AC, Harrison S, Samuels MH, et al. Osteoporotic Fractures in Men (MrOS) Study. Thyroid function and mortality in older men: a prospective study. *J Clin Endocrinol Metab.* 2012; 97(3):862–870. [PubMed: 22238396]
38. Helfand M. U.S. Preventive Services Task Force. Screening for subclinical thyroid dysfunction in nonpregnant adults: a summary of the evidence for the US Preventive Services Task Force. *Ann Intern Med.* 2004; 140(2):128–141. [PubMed: 14734337]
39. DerSimonian R, Laird N. Meta-analysis in clinical trials. *Control Clin Trials.* 1986; 7(3):177–188. [PubMed: 3802833]
40. Jackson D, White IR, Thompson SG. Extending DerSimonian and Laird's methodology to perform multivariate random effects meta-analyses. *Stat Med.* 2010; 29(12):1282–1297. [PubMed: 19408255]
41. Åsvold BO, Bjørø T, Nilsen TI, Vatten LJ. Tobacco smoking and thyroid function: a population-based study. *Arch Intern Med.* 2007; 167(13):1428–1432. [PubMed: 17620538]
42. Thienpont LM, Van Uytvanghe K, Beastall G, et al. IFCC Working Group on Standardization of Thyroid Function Tests. Report of the IFCC Working Group for Standardization of Thyroid Function Tests, part 2: free thyroxine and free triiodothyronine. *Clin Chem.* 2010; 56(6):912–920. [PubMed: 20395623]
43. Docter R, Krenning EP, de Jong M, Hennemann G. The sick euthyroid syndrome: changes in thyroid hormone serum parameters and hormone metabolism. *Clin Endocrinol (Oxf).* 1993; 39(5):499–518. [PubMed: 8252737]
44. Reinehr T. Obesity and thyroid function. *Mol Cell Endocrinol.* 2010; 316(2):165–171. [PubMed: 19540303]
45. Kordonouri O, Klinghammer A, Lang EB, Grüters-Kieslich A, Grabert M, Holl RW. Thyroid autoimmunity in children and adolescents with type 1 diabetes: a multicenter survey. *Diabetes Care.* 2002; 25(8):1346–1350. [PubMed: 12145233]
46. Völzke H, Krohn U, Wallaschofski H, Lüdemann J, John U, Kerner W. The spectrum of thyroid disorders in adult type 1 diabetes mellitus. *Diabetes Metab Res Rev.* 2007; 23(3):227–233. [PubMed: 16906626]
47. Scognamiglio R, Negut C, Ramondo A, Tiengo A, Avogaro A. Detection of coronary artery disease in asymptomatic patients with type 2 diabetes mellitus. *J Am Coll Cardiol.* 2006; 47(1):65–71. [PubMed: 16386666]
48. Hofman A, Darwish Murad S, van Duijn CM, et al. The Rotterdam Study: 2014 objectives and design update. *Eur J Epidemiol.* 2013; 28(11):889–926. [PubMed: 24258680]
49. Garber JR, Cobin RH, Gharib H, et al. American Association of Clinical Endocrinologists and American Thyroid Association Taskforce on Hypothyroidism in Adults. Clinical practice guidelines for hypothyroidism in adults: cosponsored by the American Association of Clinical

- Endocrinologists and the American Thyroid Association. *Thyroid*. 2012; 22(12):1200–1235. [PubMed: 22954017]
50. Escobar-Morreale HF, Botella-Carretero JI, Escobar del Rey F, Morreale de Escobar G. Treatment of hypothyroidism with combinations of levothyroxine plus liothyronine. *J Clin Endocrinol Metab*. 2005; 90(8):4946–4954. [PubMed: 15928247]
 51. van Deventer HE, Mendu DR, Remaley AT, Soldin SJ. Inverse log-linear relationship between thyroid-stimulating hormone and free thyroxine measured by direct analog immunoassay and tandem mass spectrometry. *Clin Chem*. 2011; 57(1):122–127. [PubMed: 21097676]
 52. Djousse L, Rothman KJ, Cupples LA, Levy D, Ellison RC. Serum albumin and risk of myocardial infarction and all-cause mortality in the Framingham Offspring Study. *Circulation*. 2002; 106(23):2919–2924. [PubMed: 12460872]
 53. Hawkins RC. Furosemide interference in newer free thyroxine assays. *Clin Chem*. 1998; 44(12):2550–2551.
 54. Stockigt JR, Lim CF. Medications that distort in vitro tests of thyroid function, with particular reference to estimates of serum free thyroxine. *Best Pract Res Clin Endocrinol Metab*. 2009; 23(6):753–767. [PubMed: 19942151]
 55. Somwaru LL, Arnold AM, Joshi N, Fried LP, Cappola AR. High frequency of and factors associated with thyroid hormone over-replacement and under-replacement in men and women aged 65 and over. *J Clin Endocrinol Metab*. 2009; 94(4):1342–1345. [PubMed: 19126628]
 56. Taylor PN, Iqbal A, Minassian C, et al. Falling threshold for treatment of borderline elevated thyrotropin levels—balancing benefits and risks: evidence from a large community-based study. *JAMA Intern Med*. 2014; 174(1):32–39. [PubMed: 24100714]
 57. Jonklaas J, Bianco AC, Bauer AJ, et al. Guidelines for the treatment of hypothyroidism: prepared by the American Thyroid Association Task Force on Thyroid Hormone Replacement. *Thyroid*. 2014; 24(12):1670–1751. [PubMed: 25266247]
 58. Åsvold BO, Bjørø T, Vatten LJ. Associations of TSH levels within the reference range with future blood pressure and lipid concentrations: 11-year follow-up of the HUNT study. *Eur J Endocrinol*. 2013; 169(1):73–82. [PubMed: 23641017]
 59. Svare A, Nilsen TI, Bjørø T, Åsvold BO, Langhammer A. Serum TSH related to measures of body mass: longitudinal data from the HUNT Study, Norway. *Clin Endocrinol (Oxf)*. 2011; 74(6):769–775. [PubMed: 21521278]
 60. Chen S, Shauer A, Zwas DR, Lotan C, Keren A, Gotsman I. The effect of thyroid function on clinical outcome in patients with heart failure. *Eur J Heart Fail*. 2014; 16(2):217–226. [PubMed: 24464626]
 61. Zhang Y, Chang Y, Ryu S, et al. Thyroid hormones and mortality risk in euthyroid individuals: the Kangbuk Samsung Health Study. *J Clin Endocrinol Metab*. 2014; 99(7):2467–2476. [PubMed: 24708095]
 62. Cappola AR, Arnold AM, Wulczyn K, Carlson M, Robbins J, Psaty BM. Thyroid function in the euthyroid range and adverse outcomes in older adults. *J Clin Endocrinol Metab*. 2015; 100(3):1088–1096. [PubMed: 25514105]
 63. Heeringa J, Hoogendoorn EH, van der Deure WM, et al. High-normal thyroid function and risk of atrial fibrillation: the Rotterdam Study. *Arch Intern Med*. 2008; 168(20):2219–2224. [PubMed: 19001198]
 64. Waring AC, Harrison S, Fink HA, et al. Osteoporotic Fractures in Men (MrOS) Study. A prospective study of thyroid function, bone loss, and fractures in older men: the MrOS Study. *J Bone Miner Res*. 2013; 28(3):472–479. [PubMed: 23018684]
 65. Yeap BB, Alfonso H, Chubb SA, et al. Higher free thyroxine levels predict increased incidence of dementia in older men: the Health in Men Study. *J Clin Endocrinol Metab*. 2012; 97(12):e2230–e2237. [PubMed: 22977271]
 66. Zhang Y, Chang Y, Ryu S, et al. Thyroid hormone levels and incident chronic kidney disease in euthyroid individuals: the Kangbuk Samsung Health Study. *Int J Epidemiol*. 2014; 43(5):1624–1632. [PubMed: 25011453]

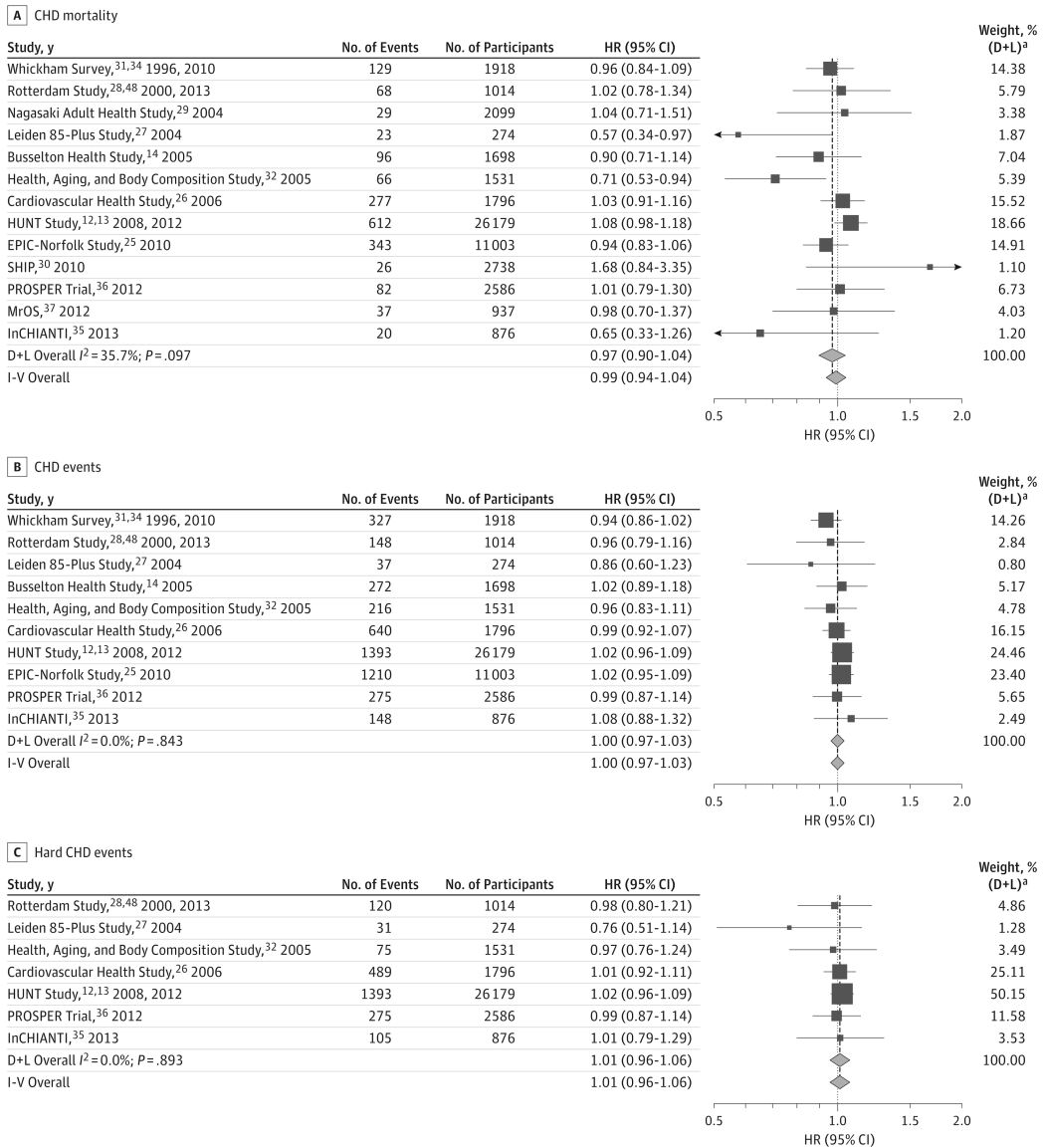


Figure. Hazard Ratios (HRs) of Coronary Heart Disease (CHD) Mortality, a First-Time CHD Event, and a First-Time Hard CHD Event per 1-mIU/L Higher Thyrotropin Level at Baseline, Adjusted for Age, Sex, and Smoking at Baseline

The squares represent HRs from each cohort, and the lines represent 95% CIs. The diamonds represent pooled HRs (with 95% CIs) from random-effects (DerSimonian and Laird³⁹ [D+L] Overall) and fixed-effect (inverse variance [I-V] Overall) meta-analysis. EPIC-Norfolk indicates European Prospective Investigation of Cancer–Norfolk; HUNT, Nord-Trøndelag Health Study; InCHIANTI, Invecchiare in Chianti; and PROSPER, Prospective Study of Pravastatin in the Elderly at Risk.

^aWeights are from random-effects analysis.

Characteristics of the 14 Cohorts

Table 1

Source	Description	No. of Participants	Age at Baseline, Median (Range), y	Women, %	Thyroid Medication Use During Follow-up, %	Start of Follow-up, y	Follow-up Time for CHD Mortality, Median (IQR), y	Person-years in Analysis of CHD Mortality
Europe								
Whickham Survey, ^{31,34} 1996, 2010	Adults living in and near Newcastle-upon-Tyne, England	1918	43 (18-92)	51.7	1.6	1972-1974	19 (18-20)	32 678
Rotterdam Study, ^{28,48} 2000, 2013	Adults living in Ommoord, the Netherlands	1014	66 (55-88)	61.5	NA	1989-1992	15.8 (12.4-16.9)	14 464
Leiden 85-Plus Study, ²⁷ 2004	Adults aged 85 y living in Leiden, the Netherlands	274	85 (85-85)	67.2	1.1	1997-1999	6.5 (3.5-9.3)	1754
HUNT Study, ^{12,13} 2008, 2012	Adults living in Nord-Trøndelag, Norway	26 179	54 (20-98)	67.2	NA	1995-1997	12.3 (11.8-12.9)	304 733
EPIC-Norfolk Study, ²⁵ 2010	Adults living in Norfolk, England	11 003	57 (39-78)	53.1	NA	1995-1998	13.4 (12.7-14.3)	142 111
SHIP, ³⁰ 2010	Adults living in Western Pomerania, Germany	2738	45 (20-81)	50.0	2.8	1997-2001	10.1 (9.3-10.7)	26 715
PROSPER Trial, ³⁶ 2012	Adults at high cardiovascular risk living in the Netherlands, Ireland, and Scotland	2586	74 (70-83)	49.5	0.3	1997-1999	3.3 (3.0-3.5)	8400
InCHIANTI, ³⁵ 2013	Adults living in Tuscany, Italy	876	70 (21-98)	54.3	0.8	1998-2000	9.1 (8.8-9.2)	7219
United States								
Health, Aging, and Body Composition Study, ³² 2005	Adults with Medicare eligibility in 2 US communities	1531	74 (69-81)	51.7	1.6	1997	8.1 (7.6-8.3)	11 203
Cardiovascular Health Study, ²⁶ 2006	Adults with Medicare eligibility in 4 US communities	1796	73 (66-98)	60.4	5.7	1992-1993	13.1 (7.8-18.7)	22 568
MrOS, ³⁷ 2012	US men aged 65 y	937	72 (65-99)	0.0	NA	2000-2002	11.2 (9.7-11.8)	9466
Australia								
Busselton Health Study, ¹⁴ 2005	Adults living in Busselton, Western Australia	1698	48 (18-89)	48.5	0.4	1981	20 (20-20)	30 831
Asia								

Source	Description	No. of Participants	Age at Baseline, Median (Range), y	Women, %	Thyroid Medication Use During Follow-up, %	Start of Follow-up, y	Follow-up Time for CHD Mortality, Median (IQR), y	Person-years in Analysis of CHD Mortality
Nagasaki Adult Health Study, ²⁹ 2004	Atomic bomb survivors and their controls in Nagasaki, Japan	2099	57 (39-92)	61.3	0.0	1984-1987	13.0 (12.3-13.7)	25 613
South America								
Brazilian Thyroid Study, ³³ 2010	Adults of Japanese descent living in São Paulo, Brazil	763	55 (30-92)	52.3	NA	1999-2000	7.3 (7.1-7.5)	5428

Abbreviations: CHD, coronary heart disease; EPIC-Norfolk, European Prospective Investigation of Cancer-Norfolk; HUNT, Nord-Trøndelag Health Study; InCHIANTI, Invecchiare in Chianti; IQR, interquartile range; MtOS, Osteoporotic Fractures in Men; NA, not available; PROSPER, Prospective Study of Pravastatin in the Elderly at Risk; SHIP, Study of Health in Pomerania.

Table 2
HRs of CHD Outcomes per 1-mIU/L Higher Thyrotropin Level at Baseline, Overall, and by Sex and Age^a

Characteristic	CHD Mortality		CHD Events		CHD Hard Events ^b	
	No. of Events/Participants	HR (95% CI)	No. of Events/Participants	HR (95% CI)	No. of Events/Participants	HR (95% CI)
Overall	1808/54 649	0.97 (0.90-1.04)	4666/48 875	1.00 (0.97-1.03)	2488/34 256	1.01 (0.96-1.06)
Sex						
Women	830/32 343	0.91 (0.79-1.04)	2063/29 687	0.98 (0.92-1.04)	1229/22 031	1.01 (0.95-1.09)
Men	978/22 306	1.01 (0.94-1.08)	2603/19 188	1.01 (0.97-1.06)	1259/12 225	1.00 (0.94-1.07)
<i>P</i> value for interaction		.30		.50		.78
Age at baseline, y						
<65	330/34 164	0.95 (0.84-1.07)	1550/30 277	0.95 (0.90-1.01)	558/19 307	0.96 (0.75-1.22)
65-79	1155/17 870	0.99 (0.91-1.07)	2642/16 183	1.03 (0.98-1.08)	1526/12 586	1.02 (0.97-1.08)
80	323/2615	1.03 (0.92-1.17)	474/2415	1.04 (0.94-1.14)	404/2363	1.03 (0.93-1.15)
<i>P</i> value for trend		.35		.07		.36

Abbreviations: CHD, coronary heart disease; HR, hazard ratio.

^a Adjusted for age, sex, and smoking at baseline.

^b Defined as CHD mortality or myocardial infarction.

Table 3
HRs of CHD Outcomes by Categories of Thyrotropin Levels at Baseline, Overall, and by Sex and Age at Baseline^a

Thyrotropin, mIU/L ^b	CHD Mortality		CHD Events		CHD Hard Events ^c	
	No. of Events/Participants	HR (95% CI)	No. of Events/Participants	HR (95% CI)	No. of Events/Participants	HR (95% CI)
Overall						
0.45-1.49	695/23 785	1 [Reference]	1857/20 791	1 [Reference]	970/14 828	1 [Reference]
1.50-2.49	678/19 996	0.99 (0.86-1.14)	1757/18 748	1.00 (0.89-1.11)	945/13 096	1.00 (0.88-1.13)
2.50-3.49	303/7636	0.99 (0.84-1.17)	747/6702	1.01 (0.92-1.11)	414/4572	1.06 (0.94-1.21)
3.50-4.49	132/3232	0.94 (0.74-1.20)	305/2634	0.97 (0.83-1.13)	159/1760	0.95 (0.78-1.16)
Women						
0.45-1.49	309/13 689	1 [Reference]	776/12 359	1 [Reference]	456/9422	1 [Reference]
1.50-2.49	303/11 799	0.84 (0.65-1.09)	766/11 285	0.94 (0.82-1.09)	460/8346	0.91 (0.73-1.14)
2.50-3.49	143/4711	0.93 (0.74-1.17)	349/4232	0.98 (0.83-1.16)	221/3023	1.13 (0.95-1.34)
3.50-4.49	75/2144	0.88 (0.62-1.23)	172/1811	0.98 (0.80-1.19)	92/1240	0.91 (0.68-1.21)
Men						
0.45-1.49	386/10 096	1 [Reference]	1081/8432	1 [Reference]	514/5406	1 [Reference]
1.50-2.49	375/8197	1.13 (0.90-1.40)	991/7463	1.03 (0.91-1.17)	485/4750	1.03 (0.90-1.18)
2.50-3.49	160/2925	1.12 (0.92-1.35)	398/2470	1.05 (0.90-1.22)	193/1549	1.03 (0.82-1.30)
3.50-4.49	57/1088	1.02 (0.76-1.36)	133/823	1.00 (0.76-1.31)	67/520	1.03 (0.78-1.36)
Age <65 y						
0.45-1.49	161/16 000	1 [Reference]	748/13 769	1 [Reference]	294/9200	1 [Reference]
1.50-2.49	117/12 306	0.96 (0.69-1.33)	560/11 611	0.93 (0.73-1.18)	191/7358	0.96 (0.60-1.53)
2.50-3.49	39/4182	0.97 (0.68-1.38)	168/3594	0.85 (0.70-1.03)	51/2072	0.86 (0.63-1.16)
3.50-4.49	13/1676	0.83 (0.46-1.52)	74/1303	1.02 (0.78-1.34)	22/677	1.26 (0.76-2.09)
Age 65-79 y						
0.45-1.49	431/6862	1 [Reference]	958/6152	1 [Reference]	547/4777	1 [Reference]
1.50-2.49	431/6680	1.03 (0.85-1.25)	1000/6190	1.05 (0.93-1.18)	592/4808	1.02 (0.83-1.26)
2.50-3.49	210/3018	1.04 (0.85-1.26)	495/2717	1.11 (0.99-1.25)	290/2119	1.13 (0.97-1.31)
3.50-4.49	83/1310	1.00 (0.77-1.29)	189/1124	1.02 (0.81-1.29)	97/882	0.91 (0.73-1.14)

Thyrotropin, mIU/L ^b	CHD Mortality		CHD Events		CHD Hard Events ^c	
	No. of Events/Participants	HR (95% CI)	No. of Events/Participants	HR (95% CI)	No. of Events/Participants	HR (95% CI)
Age 80 y						
0.45-1.49	103/923	1 [Reference]	151/870	1 [Reference]	129/851	1 [Reference]
1.50-2.49	130/1010	1.08 (0.74-1.56)	197/947	1.18 (0.95-1.47)	162/930	1.04 (0.75-1.46)
2.50-3.49	54/436	1.03 (0.69-1.53)	84/391	1.18 (0.90-1.55)	73/381	1.17 (0.85-1.61)
3.50-4.49	36/246	1.27 (0.77-2.07)	42/207	1.26 (0.88-1.79)	40/201	1.23 (0.82-1.85)

Abbreviations: CHD, coronary heart disease; HR, hazard ratio.

^a Adjusted for age, sex and smoking at baseline.

^b For the Whickham Survey,^{31,34} which used a first-generation thyrotropin assay, the following categories were used: 0.5 to 1.8, 1.9 to 3.2, 3.3 to 4.6, and 4.7 to 5.9 mIU/L.

^c Defined as CHD mortality or myocardial infarction.