



Published in final edited form as:

J Am Chem Soc. 2016 February 3; 138(4): 1456–1464. doi:10.1021/jacs.5b13201.

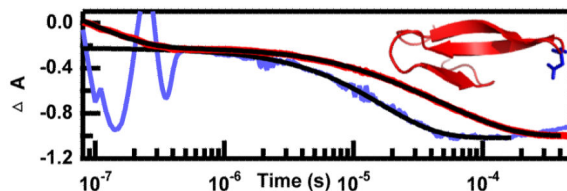
The Role of Electrostatic Interactions in Folding of β -Proteins

Caitlin M. Davis and R. Brian Dyer*

Department of Chemistry, Emory University, Atlanta, Georgia 30322, United States

Abstract

Atomic-level molecular dynamic simulations are capable of fully folding structurally diverse proteins; however, they are limited in their ability to accurately represent electrostatic interactions. Here we have experimentally tested the role of charged residues on stability and folding kinetics of one of the most widely simulated β -proteins, the WW domain. The folding of wild type Pin1 WW domain, which has two positively charged residues in the first turn, was compared to the fast folding mutant FiP35 Pin1, which introduces a negative charge into the first turn. A combination of FTIR spectroscopy and laser-induced temperature-jump coupled with infrared spectroscopy was used to probe changes in the amide I region. The relaxation dynamics of the peptide backbone, β -sheets and β -turns, and negatively charged aspartic acid side chain of FiP35 were measured independently by probing the corresponding bands assigned in the amide I region. Folding is initiated in the turns and the β -sheets form last. While the global folding mechanism is in good agreement with simulation predictions, we observe changes in the protonation state of aspartic acid during folding that have not been captured by simulation methods. The protonation state of aspartic acid is coupled to protein folding; the apparent pK_a of aspartic acid in the folded protein is 6.4. The dynamics of the aspartic acid follow the dynamics of the intermediate phase, supporting assignment of this phase to formation of the first hairpin. These results demonstrate the importance of electrostatic interactions in turn stability and formation of extended β -sheet structures.



*Corresponding Author, briandyer@emory.edu.

ASSOCIATED CONTENT

Supporting Information

The Supporting Information is available free of charge on the ACS Publications website at DOI: 10.1021/jacs.5b13201.

Temperature dependent FTIR and difference spectra of pH 7 Pin1 and pH 5.8 and pH 7 FiP35 WW Domains, SVD analysis of pH 7 FiP35 FTIR data, pH dependent fluorescence and CD data of FiP35, representative IR T-jump relaxation kinetics of FiP35 at low temperature, second derivative of FBP28 at 5 °C, and a complete table of relaxation kinetics for pH 7 and pH 5.8 at 1613, 1636, 1680, and 1710 cm^{-1} . (PDF)

Notes

The authors declare no competing financial interest.

INTRODUCTION

A close interplay between experiment and theory in the study of protein dynamics has helped to understand better how proteins fold and function. There is still room for improvement, particularly with respect to approaches for measuring and modeling electrostatic interactions. The conventional approach in molecular dynamics simulations has been to set a fixed protonation state for each titratable amino acid residue; however, fixed pK_a values likely do not appropriately describe the relationship between protonation state and conformation. Ionizable amino acid residues play a prominent role in enzyme catalysis, substrate binding, and protein folding.¹⁻⁵ The pK_a value of these amino acid residues is strongly dependent on the local environment, and can be shifted far from the solution value.^{6,7} Similarly, the same residue may have a different pK_a in different protein conformations. Structurally specific experimental characterization of the ionizable residue's protonation state and protein dynamics is necessary to test and further refine computational methods. Infrared spectroscopy offers a method to not only resolve protein backbone structure and dynamics, but also provides information about the structure and environment of the amino acid side chains.⁸ The amide I mode of the peptide backbone is sensitive to secondary structure; characteristic infrared bands can be assigned to solvated and buried α helix, β sheets, turns and random coil structures. The carbonyl group of protonated carboxyl groups can be unambiguously assigned, because it occurs in a region free from overlapping absorption by other groups. This provides a mechanism for monitoring protonation and deprotonation of carboxyl groups of interest. We have previously employed time-resolved infrared spectroscopy to probe the time-dependent protonation state of a carboxylic acid side chain in a large protein with single-residue specificity without incorporating any labels.⁹⁻¹¹ Thus, it should be possible to determine the coupling between protonation state and protein conformation using time-resolved infrared spectroscopy of the peptide backbone and carboxylic acid side chains.

Here we have experimentally tested the role of charged residues on stability and folding kinetics of one of the most widely simulated β -protein families, the WW domain. The WW domain family consists of an antiparallel and highly twisted three-stranded β -sheet structure with a small hydrophobic core and two highly conserved tryptophan residues.¹²⁻¹⁵ Because of their fast folding rates and simple structure, WW domains have been the focus of extensive computational and experimental studies.¹⁶⁻²⁹ Many of these studies have predicted a folding mechanism where folding is initiated in the turn of the first hairpin.^{17,18,23,25,27,28,30,31} A comparison of the sequence and stability of these WW domains reveals the presence of several charged residues in the first turn (Table 1). In the native sequences, the first turn is flanked on each side by amino acids with positively charged side chains (blue). WW domains that also have an amino acid with a negatively charged side chain (red) in the first turn have a melting temperature of ~ 10 °C higher than related sequences.³⁴ One possibility is that these charged side chains form a salt bridge that stabilizes the first turn. This interaction depends on the protonation state of the negatively charged side chain.

We have addressed this issue by studying the role of aspartic acid and arginine on stability and folding kinetics in the Pin1 family of WW domains (Figure 1). We investigated three

WW domains: one without a negatively charged residue in the turn (Pin1), one with both negative and positively charged residues in the turn (FiP35), and one without the positively charged flanking residues in the turn (R12A R16A FiP35). We found that while the

FiP35 mutant forms a WW Domain, mutation of Arg12 and Arg16 resulted in destabilization of the peptide and an increase in propensity to aggregate. Equilibrium infrared spectroscopy revealed that aspartic acid was protonated under folded conditions in both FiP35 and FiP35 WW domains, making it unlikely that arginine and aspartic acid form a salt bridge. The pH titration of Asp13 is broad, likely because its pK_a is coupled with the protein conformation. The dynamics of the FiP35 backbone and Asp13 side chain were measured using temperature jump, time-resolved infrared spectroscopy. Pulsed laser excitation was used to rapidly initiate a shift in the folding equilibrium. The relaxation of the WW domain was measured by independently probing the components of the IR amide I band assigned to the β -sheets and β -turn and the protonated carboxyl side chain of aspartic acid.

FiP35 exhibited multiexponential behavior when the carbonyl backbone was probed, but only one phase when the aspartic acid was probed. Similar to other WW domains, wavelength dependent infrared measurements in the amide I region reveal a fast 100 ns phase, intermediate $\sim 10 \mu s$ phase and a slower $\sim 100 \mu s$ phase.^{27,28} The kinetics of the aspartic acid protonation state follow the kinetics of the intermediate phase when the backbone is probed, supporting the assignment of this phase to formation of the first hairpin. While the global folding mechanism agrees with computer simulations that predict folding that initiates in the first turn, these simulations methods were incapable of modeling protonation changes necessary to describe the local environment of the aspartic acid in the turn. These results demonstrate the importance of developing experimental and computational methods that characterize electrostatic interactions in proteins.

EXPERIMENTAL SECTION

Protein Synthesis and Purification

FiP35, FiP35, and Pin1 were synthesized via standard 9-fluorenylmethyloxycarbonyl (Fmoc) base solid-phase chemistry on a Liberty1 microwave peptide-synthesizer (CEM, Matthews, NC). Fmoc-PAL-PS resin (Applied Biosystems, Foster City, CA) was used to form a peptide amide. The peptide was purified by reverse-phase chromatography (C18 column) using a water/acetonitrile gradient with 0.1% trifluoroacetic acid (TFA) as the counterion. TFA interferes in the Amide-I IR measurements at 1672 cm^{-1} . The peptide was dissolved in a 2 mM HCl solution and lyophilized to allow exchange of the TFA counterion for HCl.³⁵ The identity of the peptide was confirmed by matrix-assisted laser desorption ionization time-of-flight mass spectrometry. The peptide was lyophilized and dissolved in D_2O to allow deuterium-hydrogen exchange of amide protons. The peptide was lyophilized a second time and resuspended in D_2O buffer. Buffers were prepared at 20 mM concentration for the appropriate pH range: acetate (pH 4–5.5), potassium phosphate (pH 6–8), Tris-HCl (pH 8.5–9), and carbonate-bicarbonate (9.5–10.5). Sample concentrations of 0.05–2.0 mM were prepared for CD, fluorescence and IR experiments.

CD Spectroscopy

CD wavelength scans and CD melting curves were recorded on a Jasco J-810 spectropolarimeter equipped with a PFD-425S Jasco temperature controller module (Jasco, Inc., Easton, MD). Peptides were dissolved at 50 μM in buffer. All measurements were obtained using a 1 mm path length cell. Wavelength scans were recorded over the range of 260 to 190 nm with an average of 3 repeats. During spectral acquisition, a bandwidth of 2 nm and scan rate of 50 nm/min was used. Thermal unfolding experiments were performed by monitoring the signal at 226 nm from 5 to 95 $^{\circ}\text{C}$ using a 0.1 $^{\circ}\text{C}$ interval and scan rate of 30 $^{\circ}\text{C}/\text{h}$. During the thermal unfolding experiment a full wavelength scan was obtained every 5 $^{\circ}\text{C}$ after a 60 s delay. The buffer and protein concentrations were the same as used in the wavelength scan experiments.

FTIR Spectroscopy

The equilibrium melting behavior was monitored on a Varian Excalibur 3100 FTIR spectrometer (Varian Inc., Palo Alto, USA) using a temperature controlled IR cell. The IR cell consists of two CaF_2 windows stacked and separated by a 100 μm Teflon spacer split into two compartments, a sample and a reference. The same cells are used for equilibrium FTIR and T-jump experiments. No aggregation was observed in the infrared at reported concentrations. All spectra shown at a specific temperature are obtained from the ratio of the single beam spectra of sample solution with protein to the reference buffer solution without protein. The temperature-dependent difference spectra were then generated by subtracting the spectrum at the lowest temperature from the spectra at higher temperatures. Data collected at 50 μM concentration were baseline corrected using a baseline spline fit. The second derivative spectra were computed in IGOR PRO after smoothing the data with a sixth order binomial algorithm to remove any residual water vapor (WaveMetrics, Lake Oswego, OR).

Time Resolved Temperature Jump (T-Jump) Relaxation Measurements

The IR T-jump apparatus has been described previously.³⁶ Pulsed laser excitation is used to rapidly perturb the folding equilibrium on a time scale faster than the molecular dynamics of interest. Time resolved infrared is then used to probe the reaction. A Q-switched GCR-4 Nd:YAG laser (Spectra Physics, Mountainview, CA) fundamental at 1064 nm is Raman shifted (one Stokes shift in 200 psi H_2 gas) to produce a 10 ns pulse at 2 μm . The magnitude of the T-jump is calculated using the change in reference absorbance with temperature. IR T-jump experiments were conducted at multiple concentrations between 0.5 and 2.0 mM. The T-jump reference is taken from D_2O buffer with 20 mM potassium phosphate buffer at $\text{pD}^* 7.0$ at the same temperature and frequency as the sample. Absorbance changes at the reference frequency are due only to changes in D_2O absorbance, which is used as an internal thermometer.³⁶

The change in signal induced by the T-jump is probed in real time by a continuous laser with a frequency in the amide I' band of the IR. The mid-IR probe beam is generated by a continuous wave quantum cascade laser (Daylight Solutions Inc., San Diego, CA) with a tunable output range of 1570–1730 cm^{-1} . The transient transmission of the probe beam through the sample is measured using a fast, 100 MHz, photovoltaic MCT IR detector/

preamplifier (Kolmar Technologies, Newburyport, MA). Transient signals are digitized and signal averaged (1000 shots) using a Tektronics digitizer (7612D, Beaverton, OR). Instrument control and data collection are controlled using a LabVIEW computer program.

Analysis of Kinetics Data

The peptide relaxation kinetics must be deconvolved from the observed kinetics. Accurate deconvolution is possible as the instrument response is determined from the reference measurement under the exact conditions of the sample measurements. In order to minimize detector artifacts, the reference is scaled prior to subtraction from the sample. The decay function is a multiexponential decay with the formula

$$A=A_0+\dots+A_n\exp\left(\frac{-(x-x_0)}{\tau_n}\right) \quad (1)$$

where A_0 is an offset, n is the number of exponentials to fit, A_n is a preexponential factor, τ_n is the relaxation lifetime of the sample and x_0 is the time offset. In order to best fit the data, the minimum number of exponentials with unique relaxation lifetimes was selected. The data are fit over the interval from 80 ns to an order of magnitude outside the slowest exponential. The data analysis was performed in IGOR PRO (WaveMetrics, Lake Oswego, OR).

RESULTS AND DISCUSSION

Far-UV CD Spectroscopy

The Pin1, FiP35 and FiP35 WW domains were synthesized to study the aspartic acid in loop 1 of FiP35 and its interaction with neighboring arginine residues. Far-UV CD is a good indicator of peptide secondary structure. Typically, β -sheet peptides have a CD spectrum with a negative peak at ~218 nm and a positive peak at ~195 nm.³⁷ Folded WW domains instead have a CD spectrum dominated by a negative peak at ~202 nm and a positive peak at ~230 nm.^{38,39} Small variations in the position and intensities of these peaks have been observed among the WW domain family.³⁸ The peak at ~202 nm resembles the random coil peak usually found at 200 nm. Disorder in the N- and C-termini of the folded structure of WW domains is thought to contribute to the negative peak in the CD spectrum.³⁹⁻⁴² The peak at ~230 nm arises from the presence of ordered aromatic side chains.^{18,37,39} Folded Pin1 WW domains and its mutants have been shown to have additional structure between 190 and 210 nm.^{33,43} The far-UV CD spectra of the Pin1, FiP35 and FiP35 WW domains are consistent with the Pin1 family WW domain secondary structure (Figure 2A).

Thermal denaturation was monitored by recording the ellipticity change at 226 nm with temperature (Figure 2B). The Pin1 and FiP35 WW domains exhibit the typical heat induced unfolding behavior with a loss of intensity at 226 nm and a shift of the minimum at 197 to 200 nm, corresponding to a change in the secondary structure from WW domain to random coil (Figure 2A).³⁹ In addition to the peaks associated with thermal unfolding, the FiP35 mutant gains a negative peak at ~219 nm and positive peak at ~190 nm, consistent with β -sheet structure. This is evidence for formation of β -sheet aggregates at high temperature.

The melting curves of FiP35 and Pin1 (Figure 2B) were fit to an apparent two-state equilibrium model:

$$A_0 = \frac{A_f + S_f T}{1 + \exp\left(-\frac{\Delta H}{R}\left(\frac{1}{T} - \frac{1}{T_m}\right)\right)} + \frac{(A_u + S_u T) \left(\exp\left(-\frac{\Delta H}{R}\left(\frac{1}{T} - \frac{1}{T_m}\right)\right)\right)}{1 + \exp\left(-\frac{\Delta H}{R}\left(\frac{1}{T} - \frac{1}{T_m}\right)\right)} \quad (2)$$

where A_0 is the observed absorbance, A_f and A_u are the absorbance contributions from the folded and unfolded populations at 0 °C, S_f and S_u are the slope of the folded and unfolded state baseline, H is the enthalpy change at the midpoint, R is the gas constant, and T_m is the transition midpoint.⁴⁴ This analysis assumes a C_p of 0 as it is unlikely that a small peptide like a WW domain would have a large difference in heat capacity between the folded and unfolded states. The data are then normalized for comparison. The observed melting temperature of Pin1 is 57.1 ± 0.1 °C. This agrees with the previously reported melting temperature of Pin1, 58.6 °C, obtained by a CD melt monitored at 226 nm.⁴³ The melt of FiP35 is less cooperative, with a melting temperature of 80 °C \pm 1 °C. Because of the high transition temperature and the breadth of the transition it was not possible to observe a post transition baseline. However, the observed melting temperature agrees with the previously reported melting temperature of FiP35, 78 °C, which was obtained by global fit of thermal-denaturant CD melting curves monitored at 227 nm.^{16,26}

FTIR Spectroscopy

The temperature-induced unfolding of Pin1 and FiP35 was studied over the range from 10 to 90 °C in 5 °C intervals using FTIR spectroscopy monitored in the amide I' region. To avoid the aggregation of FiP35 observed at high temperature by CD, the FTIR absorption spectrum was collected at 50 μ M at 20 °C. The high and low temperature absorption spectra of the amide I' spectral region (amide I region of peptides in D₂O) of the peptides are shown in Figure 3A (complete temperature dependent spectra are shown in Supporting Information Figure S1). The amide I' absorbance arises from the C=O stretching vibration of the polypeptide backbone carbonyls, and is an established indicator of secondary structure.^{45–47} This relatively broad band contains contributions from the entire polypeptide backbone, which in the case of WW domains includes β -sheet, β -turn and random coil structure. The changes with temperature are highlighted by the difference spectra for each peptide (Figure 3B). The difference spectra are generated by subtracting the lowest temperature spectrum from each absorption spectrum at higher temperature. Negative peaks correspond to specific structures or interactions present in the folded state, and positive peaks correspond to new interactions with solvent in the unfolded state. The individual peaks are more easily distinguished in the second derivative of the FTIR spectra at the lowest temperature (Figure 3C).

At low temperature there are three main components of the amide I' band, centered at 1613, 1636, and 1680 cm^{-1} . The intensity of these features decreases with increasing temperature, meaning that they are all associated with the folded state. These peaks have previously been observed in other WW domains.^{27,28,48} A peak at \sim 1611 cm^{-1} in β -hairpins has been assigned to an amide C=O group in the turn usually involved in multiple hydrogen bonds with side chain or backbone donors.^{49,50} There are three such groups in the first turn and

one such group in the second turn of wildtype Pin1 WW domain.⁵¹ Because of this, it is not possible to independently assign the 1613 cm⁻¹ peak to the turn of the first or second hairpin. Upon mutation of the first turn to SA-DGR, a FiP35 like mutant, one of the interactions in the first turn and the interaction in the second turn are conserved, and two new hydrogen bonds between backbone carbonyls and side chain or backbone donors arise.⁵² The peak is of equal intensity in each of the peptides (Figure 3C), because the number of hydrogen bonds is conserved. IR bands at 1634 and 1681 cm⁻¹ are well established components of antiparallel β -sheets.⁵³ The peak at 1634 cm⁻¹ arises from in-phase coupling of carbonyl groups in the sheet and the peak at 1681 cm⁻¹ arises from out-of-phase coupling of carbonyls in the sheet. The Pin1, FiP35 and FiP35 amide I' bands at 1636 and 1680 cm⁻¹ are consistent with these characteristic β -sheet markers.

Analysis of the spectral region above 1700 cm⁻¹ reveals a peak at 1713 cm⁻¹ that is present in the FiP35 and FiP35 WW domain, but not the Pin1 WW domain. This peak arises from the C=O stretch of a protonated carboxyl side chain, either glutamic acid or aspartic acid.⁸ The difference between the residues with carboxyl group side chains in the three sequences is in the first turn; FiP35 and FiP35 have an aspartic acid that is not found in Pin1. Therefore, the peak at 1713 cm⁻¹ can be assigned to Asp13, most likely in its protonated form. An alternative possibility is that Asp13 is deprotonated but involved in a strong salt bridge. A deprotonated carboxylate group has two strong bands at 1400 and 1570 cm⁻¹ (ν_{sym} and ν_{asym}). These positions may shift upon cation chelation, which changes bond lengths and bond angles. In unidentate chelation of the deprotonated carboxylate group, the two CO bonds are no longer equivalent, with the chelating oxygen having more single bond character and the nonchelating oxygen having more double bond character. In extreme cases this has been found to shift one of the bands to 1713 cm⁻¹, similar to the band assigned to the C=O stretch of a protonated carboxyl side chain.⁵⁴ There are two arginines in FiP35 that may provide a cation through a salt bridge with aspartic acid, Arg12 and Arg15. However, mutation of these arginines to alanine in FiP35, does not eliminate the peak at 1713 cm⁻¹ (Figure 3), supporting our assignment of this band to the protonated carboxylic acid side chain of Asp13. Similar to the bands in the amide I' region, the position of the C=O stretch of the protonated aspartic acid is sensitive to hydrogen bonding. The vibrational stretching band associated with the C=O can be observed anywhere in the region from 1713 to 1775 cm⁻¹, with lower frequencies indicating the carbonyl side chain is engaged in hydrogen bonding.⁸ In the X-ray crystal structure of a R12A F28W FiP35 mutant a native contact is formed between Ser11 and Asp13.⁵² On this basis we can assign the 1713 cm⁻¹ band to hydrogen bonding between the carbonyl of the protonated aspartic acid side chain and the hydroxyl of the serine.

The pH dependence of the protonated carboxylic acid side chain was studied over the range from pH 4–10 (Figure 4). The pH was not dropped below pH 4 to minimize contributions to the 1713 cm⁻¹ band from the protonated glutamic acid side chain (pK_a of 4.2), which overlaps with the protonated aspartic acid side chain band. Measurements were carried out at 20 °C, a temperature where at neutral pH the peptide was found to be folded (Figure 3C). The three bands assigned to the folded WW domain, 1613, 1636, and 1680 cm⁻¹, are observed at each pH. Unfolding of the β -sheet is characterized by a blue shift and

broadening of the amide I band.⁸ The overlap of the 1636 cm⁻¹ band across all pHs demonstrates that the β -sheets are intact over the entire pH range (Figure 4A). However, the decrease in the relative intensity of the 1613 cm⁻¹ band, assigned to the turn, and changes in the region between 1650 and 1680 cm⁻¹, assigned to solvated carbonyls, indicate that there are structural changes associated with pH that do not affect the hydrogen bond network of the β -sheets. pH dependent fluorescence and circular dichroism spectra (Supporting Information Figure S4–S5) confirm that the WW domain undergoes structural rearrangement, repacking of the hydrophobic core, at high and low pH but that the WW domain does not completely denature. The aspartic acid is protonated to some extent over the entire pH range. An increase in the intensity of the turn structure, 1613 cm⁻¹, correlates with the increase in the population of protonated aspartic acid, 1713 cm⁻¹, as the pH is lowered. This is evidence that changes in the protonation state of aspartic acid, found in the first turn, affect the hydrogen-bonding network of the first turn. A pH titration of the protonated carboxylic acid side chain of Asp13 derived from the second derivative of the pH dependent IR absorbance at 1713 cm⁻¹ is shown in Figure 4B. The pK_a derived from this fit is 6.4 ± 0.9. The pK_a of the aspartic acid side chain of free aspartic acid is 3.9; however, electrostatic and hydrophobic induced pK_a shifts of as many as 6 pK_a units have been reported for aspartic acid in proteins.^{55–58} The transition is broad, likely because protonation is coupled with folding of the WW domain. At neutral pH the aspartic acid completely deprotonates when the WW domain unfolds (Figure 3A). The pK_a of the Asp13 side chain is dependent on both pH and the FiP35 WW domain secondary structure.

The normalized melting curves for Pin1 and FiP35 WW domains derived from the temperature dependent IR absorbance at 1636 and 1713 cm⁻¹ are shown in Figure 5. The data were normalized after being fit to an apparent two-state equilibrium model using eq 2. The melting temperature of the wildtype Pin1 is 53.1 ± 0.2 °C. The melting temperature of FiP35 is wavelength dependent, with a relatively broad transition when probed at 1636 cm⁻¹ and a sharper transition when probed at 1713 cm⁻¹. When the 1636 cm⁻¹ data is fit to the sum of two melts it fits to a T_m of 40.4 ± 0.1 °C and 77.1 ± 0.1 °C. This agrees well with the melting temperature probed by CD. The transition at 1713 cm⁻¹ fits to a T_m of 59.1 ± 0.2 °C. The observation of frequency dependent melt profiles suggest the presence of more than one temperature-dependent process. A combined SVD analysis and global fit (Supporting Information Figure S2) reveals that the lower temperature transition arises from melting of the sheets prior to the main transition at higher temperature.

Temperature-Jump Relaxation Kinetics

The relaxation kinetics of the folding/unfolding transition of FiP35 WW domain following a laser-induced temperature jump were probed using time-resolved infrared spectroscopy. Structure specific measurements were made using the amide I' frequency for the amide carbonyls of the turns (1613 cm⁻¹), residues involved in interstrand coupling of the sheets (1636 and 1680 cm⁻¹), and the protonated carboxylic acid side chain of aspartic acid (1713 cm⁻¹). Jumps were performed slightly off peak center to maximize the transient absorbance signal. The complete relaxation kinetics for each frequency is reported in the Supporting Information (Table S1–S4). Time resolved measurements examined the dependence of the relaxation rates on the final temperature following a temperature jump. The magnitude of

the temperature jump was kept constant while varying the final temperature for a range of final temperatures below the global melting transition. The observed rates reflect the sum of the forward and reverse rate constants for the reversible folding reaction. Under conditions where the protein is predominantly folded the relaxation rate is dominated by the rate of the folding reaction. Because the final temperature of all jumps is at least 20 °C below the melting temperature, the folding rate will dominate the observed relaxation kinetics. The relaxation kinetics of the amide I' region (1613, 1636, and 1680 cm^{-1}) are best fit by a triple exponential (eq 1). At high temperatures the 1680 cm^{-1} data is fit to a double exponential due to artifacts in the data at early time and the overall low absorbance change. Examples of jumps to lower temperature where there are fewer early time scale artifacts are included in the Supporting Information Figure S6. The relaxation kinetics of the aspartic acid side chain is best fit by a single exponential at all temperatures. Although aggregation was observed over the time scale of equilibrium FTIR measurements at pH 7 (Figure S1, S2), it does not contribute to the T-jump dynamics because aggregation is slower than the duration of the T-jump, which relaxes back to the initial temperature in a few milliseconds. IR T-jump measurements at pH 5.8, where aggregation in FTIR measurements is not observed, agree with measurements obtained at pH 7 (Table S1–S4). Figure 6 displays the relaxation kinetics of FiP35 following a jump from 35 to 50 °C. The fits of the data in Figure 6 are reported in Table 2. There is good agreement between the dynamics at each of the amide I' frequencies. There is a fast ~ 100 ns phase (τ_1), a ~ 10 μs phase (τ_2) and a slower ~ 100 μs phase (τ_3). The single phase observed when the frequency assigned to the aspartic acid side chain is probed agrees with the intermediate τ_2 phase.

Frequency dependent measurements of the amide I' region reveal differences in the dynamics of the turns (1613 cm^{-1}) and β -sheets (1636 and 1680 cm^{-1}). Because of overlap of peaks in the amide I' region, probes at each location are sensitive to dynamics associated with folding at multiple locations, resulting in multiexponential kinetics regardless of probe frequency. It is also likely that the spectral responses are coupled such that formation of one structure affects the others. However, the relative amplitude of each kinetics phase depends on the probe frequency, which allows us to assign the structural feature that contributes most strongly to each phase. The relative amplitude of the fast phase is greatest in the transient measured at 1613 cm^{-1} , which probes the turn of both hairpins of the WW domain. The slow phase dominates the kinetics measured at 1636 cm^{-1} , which probes interstrand coupling across the β -sheets of the WW domain. This assignment is supported by the kinetics measured at 1680 cm^{-1} , also dominated by the slow phase, which probes out-of-phase coupling of the carbonyl bonds in the β -sheet. Based on these observations we assign the fast phase to turn formation and the slowest phase to sheet formation.

Unlike the measurements in the amide I' region, the probe at 1713 cm^{-1} is sensitive to dynamics of a single side chain, aspartic acid. The peak is in a clear spectral region, easing interpretation of observed dynamics. The observed dynamics report on the folding of the first hairpin of FiP35, because the aspartic acid, located in the first turn, is only protonated when FiP35 is folded. It is likely that many of the contacts in the turn and β -sheet of the first hairpin must be formed in order for the environment to be suitable for the aspartic acid to protonate. There are many examples of elevated $\text{p}K_a$'s of aspartic acid groups in the

hydrophobic interior of proteins, so it is likely that protonation occurs concurrently with packing of the hydrophobic region of the first hairpin. The single exponential kinetics match the kinetics of the intermediate phase probed in the amide I' region (Table 2). An Arrhenius plot of the observed kinetics at 1713 and 1636 cm^{-1} demonstrates this agreement across all of the temperatures probed (Figure 7). On the basis of this close correspondence, we can assign the intermediate phase to formation of β -sheet of the first hairpin. Using observations from the frequency dependent measurements in the amide I' region and of the aspartic acid side chain it is possible to interpret the three phases observed in the Arrhenius analysis. The fast relatively temperature independent 100 ns phase is assigned to formation of the turns. The intermediate $\sim 10 \mu\text{s}$ phase corresponds to formation of the hydrogen bonding network in the β -sheet of the first hairpin and the slow highly temperature dependent $\sim 100 \mu\text{s}$ phase can be attributed to formation of the hydrogen bonding network in the β -sheet of the second hairpin.

Previous temperature jump studies of FiP35 probed by fluorescence spectroscopy reported biphasic behavior below T_m and single exponential behavior above T_m . A jump to a final temperature of 64 °C, below T_m , fit to relaxation lifetimes of 1.5 and 15 μs .²⁶ Infrared T-jumps to 60 °C have the same intermediate and slow phases (Table S1–S4). The difference in folding behavior above and below T_m was interpreted as the onset of downhill folding. Recently, pressure jump experiments also showed FiP35 to be biphasic, but with different kinetic characteristics in the fast phase than observed by temperature jump.²⁹ Experimental results combined with computer modeling predict folding proceeds through two parallel pathways, with the competing pathways having hairpin 1 or hairpin 2 formed first. The folding pathway perturbed by temperature and pressure may be different; differences in the fast phase observed by temperature and pressure jump provide evidence for this. The infrared measurements that we performed in the amide I' region had phases similar to the time scales observed by fluorescence temperature and pressure jump, but with an additional ~ 100 ns phase. Fluorescence measurements are sensitive to the tryptophan side chain packing in the β -sheet of the first hairpin, whereas infrared measurements are sensitive to secondary structure changes in the peptide backbone. Because the ~ 100 ns phase is located in the turn and the tryptophan is located in the β -sheet, the tryptophan may not report on dynamics in the turns. This phenomenon was also observed in temperature jump experiments probed by fluorescence and infrared spectroscopy in FBP28 WW domain.²⁸ Our results support a hierarchical model of folding initiated in the turns, followed by formation of hairpin 1 and hairpin 2. The fast phases are temperature independent and the slowest phase is highly temperature dependent, so as the temperature is raised the intermediate and slow phase overlap making it impossible to separate the two phases. Measurements of the aspartic acid side chain support a model with sequential intermediates; if the intermediates were formed along parallel nonsequential folding pathways, the aspartic acid would be protonated on more than one time scale and we would expect to observe the same multiexponential kinetics when 1710 cm^{-1} is probed as we observe for the other probed frequencies. The dynamics monitored at 1710 cm^{-1} are consistent with a hierarchical model where the side chain of aspartic acid is protonated in an intermediate along the folding pathway; however, this model does not eliminate the possibility of multiple folding pathways connecting these intermediate states.

The FiP35 Pin1 WW domain mutant has a shortened first turn with aspartic acid based on the five-residue type-I G1 bulge turn found in FBP28 WW Domain.⁵² Infrared measurements of wildtype FBP28 WW domain show that the Asp in the turn is protonated, with a peak at 1715 cm^{-1} (Supporting Information Figure S7). This is consistent with a protonated carbonyl side chain, like we observe in FiP35 WW domain, engaged in hydrogen bonding with a neighboring side chain or protein backbone. We performed extensive kinetic measurements on a mutant of FBP28 WW Domain where the Asp was substituted for the neutral analogue Asn.²⁸ The neutral analogue exhibited the same folding kinetics as the wildtype protein. This observation also supports our assignment of the 1713 cm^{-1} band in FiP35 to a hydrogen bonded carbonyl side chain of protonated aspartic acid, because Asn has an analogous carbonyl in the side chain that should be able to form the same hydrogen-bonding network. The Gruebele and Kelly groups have demonstrated that shortening the first turn usually speeds folding and stabilizes the WW domain.²⁶ While many of the variants they designed have an aspartic acid in the first turn, they also reported data for WT Pin1, which has no negatively charged residues in the turn. They observed a doubling of the folding rate and a 10 degree increase in T_m (indicating an increase in stability) by removing R12 of WT Pin1. Incorporation of the aspartic acid into the turn further stabilizes the mutants by 10 degrees and speeds folding by an additional $10\ \mu\text{s}$. In our T-jump measurements we observe that the aspartic acid is protonated in the intermediate step when the first loop is formed. The hydrogen bonds that aspartic acid forms stabilize the first turn, which lowers the barrier of the rate limiting formation of the second loop.

Extensive MD simulations of FiP35 generally agree that folding is more likely to proceed through formation of the first hairpin followed by the second hairpin; however, disagree on the presence of intermediates or downhill folding.^{29,31,59–61} The Pande group employed a distributed computing approach to run thousands of short simulations totaling 2.3 ms, that showed heterogeneous folding of FiP35 with multiple folding pathways initiated in either sheet.⁶² Two $100\ \mu\text{s}$ trajectories of FiP35 WW domain made available by D. E. Shaw Research predict downhill folding or folding through intermediates depending on the analysis method.^{31,60,61,63} The original work concluded that there is no barrier to folding.⁶³ Krivov reanalyzed this data using a novel reaction coordinate and identified an intermediate where the first loop was formed.⁶¹ Markov-state-models (MSM) of the same data identified the presence of additional pathways, with a second pathway where the second loop is formed in the intermediate.^{31,60} Application of the kinetically discriminatory metric learning (KDML) algorithm to the MSM reveals two additional states on the submillisecond time scale.⁶⁴ The faster state involves Asp13 flipping between a native hydrogen bond with Ser11 and nonnative hydrogen bonds with Arg12 and Arg16. While the aspartic acid is not protonated in these simulations, the identification of early dynamics at this position is consistent with our observation of a fast time scale intermediate involving protonation of the aspartic acid. A network based analysis supports these models, predicting that the pathway where the first loop is formed first is four times more probable.⁶⁵ Monte Carlo simulations in two course-grained models support this model and further find that the probability of each pathway is dependent on starting temperature and initial condition.⁶⁶ Three long time scale molecular dynamics simulations mimicking temperature jump conditions predict folding through the second hairpin; however, in one case the protein did not fully fold.²⁹ Our results

support models that predict folding through the first hairpin; however, none of the computational methods that have been applied to FiP35 have taken into account electrostatic interaction at Asp13. Optimization of the stability and folding kinetics of Pin1 WW domain was achieved with three charged residues located in the first turn. WW domains fold through an intermediate where the first hairpin forms first, so experimental and computational methods that capture electrostatic interactions are necessary to fully characterize the folding pathway. Much effort has been placed on developing computational methods that describe coupling between protein folding and pH.⁶⁷⁻⁷⁰ Recently, all-atom continuous pH molecular dynamics simulations that determine the protonation state of titratable sites during molecular dynamics simulation at a specific pH have been under development by several groups.⁷¹⁻⁷⁴ Applying these methods to FiP35 WW Domain it should be possible to not only predict the protein's pK_a 's, but also determine the pH-dependent conformational dynamics.⁷⁵⁻⁷⁹

CONCLUSION

Using infrared spectroscopy it is possible to monitor side chain dynamics with single-residue specificity without incorporation of nonnative labels. We observe a protonated side chain in the first turn of the FiP35 WW domain with a pK_a that is coupled to the folding. Time resolved measurements probed in the amide I region and at the aspartic acid side chain provide evidence for a hierarchical folding mechanism, similar to that proposed for other WW domains.^{17,25,27,28,30} Formation of the turns precedes formation of the first hairpin, with the final step being folding of the second hairpin. Infrared spectroscopy of the protonated side chain exhibits a single exponential that agrees with the intermediate phase, supporting the hierarchical folding model initiated in the first hairpin. Previous experimental and computational studies applied to this system lacked probes sensitive to the aspartic acid protonation state. These experiments demonstrate the importance of electrostatic interactions in the structural dynamics of even the smallest proteins.

Supplementary Material

Refer to Web version on PubMed Central for supplementary material.

ACKNOWLEDGMENTS

This work was supported by a grant from the National Institutes of Health (NIH R01 GM53640) to R.B.D.

REFERENCES

- (1). Oliveberg M, Fersht AR. *Biochemistry*. 1996; 35:6795. [PubMed: 8639631]
- (2). Stoycheva AD, Onuchic JN, Brooks CL. *J. Chem. Phys.* 2003; 119:5722.
- (3). Waldburger CD, Jonsson T, Sauer RT. *Proc. Natl. Acad. Sci. U. S. A.* 1996; 93:2629. [PubMed: 8610092]
- (4). Grimsley GR, Scholtz JM, Pace CN. *Protein Sci.* 2009; 18:247. [PubMed: 19177368]
- (5). Kukic P, Farrell D, Sondergaard CR, Bjarnadottir U, Bradley J, Pollastri G, Nielsen JE. *Proteins: Struct., Funct., Genet.* 2010; 78:971. [PubMed: 19894279]
- (6). Harris TK, Turner GJ. *IUBMB Life.* 2002; 53:85. [PubMed: 12049200]
- (7). Engelhard M, Gerwert K, Hess B, Kreutz W, Siebert F. *Biochemistry.* 1985; 24:400. [PubMed: 3978081]

- (8). Barth A, Zscherp C. *Q. Rev. Biophys.* 2002; 35:369. [PubMed: 12621861]
- (9). Bailey JA, Tomson FL, Mecklenburg SL, MacDonald GM, Katsonouri A, Puustinen A, Gennis RB, Woodruff WH, Dyer RB. *Biochemistry.* 2002; 41:2675. [PubMed: 11851414]
- (10). McMahon BH, Fabian M, Tomson F, Causgrove TP, Bailey JA, Rein FN, Dyer RB, Palmer G, Gennis RB, Woodruff WH. *Biochim. Biophys. Acta, Bioenerg.* 2004; 1655:321.
- (11). Taskent-Sezgin H, Chung JA, Banerjee PS, Nagarajan S, Dyer RB, Carrico I, Raleigh DP. *Angew. Chem., Int. Ed.* 2010; 49:7473.
- (12). Macias MJ, Hyvonen M, Baraldi E, Schultz J, Sudol M, Saraste M, Oschkinat H. *Nature.* 1996; 382:646. [PubMed: 8757138]
- (13). Macias MJ, Gervais V, Civera C, Oschkinat H. *Nat. Struct. Biol.* 2000; 7:375. [PubMed: 10802733]
- (14). Verdecia MA, Bowman ME, Lu KP, Hunter T, Noel JP. *Nat. Struct. Biol.* 2000; 7:639. [PubMed: 10932246]
- (15). Wiesner S, Stier G, Sattler M, Macias MJ. *J. Mol. Biol.* 2002; 324:807. [PubMed: 12460579]
- (16). Piana S, Sarkar K, Lindorff-Larsen K, Guo MH, Gruebele M, Shaw DE. *J. Mol. Biol.* 2011; 405:43. [PubMed: 20974152]
- (17). Jager M, Nguyen H, Crane JC, Kelly JW, Gruebele M. *J. Mol. Biol.* 2001; 311:373. [PubMed: 11478867]
- (18). Ferguson N, Johnson CM, Macias M, Oschkinat H, Fersht A. *Proc. Natl. Acad. Sci. U. S. A.* 2001; 98:13002. [PubMed: 11687613]
- (19). Karanicolas J, Brooks CL 3rd. *Proc. Natl. Acad. Sci. U. S. A.* 2003; 100:3954. [PubMed: 12655041]
- (20). Karanicolas J, Brooks CL. *Proc. Natl. Acad. Sci. U. S. A.* 2004; 101:3432. [PubMed: 14981252]
- (21). Mu YG, Nordenskiold L, Tam JP. *Biophys. J.* 2006; 90:3983. [PubMed: 16533840]
- (22). Noe F, Schutte C, Vanden-Eijnden E, Reich L, Weikl TR. *Proc. Natl. Acad. Sci. U. S. A.* 2009; 106:19011. [PubMed: 19887634]
- (23). Nguyen H, Jager M, Moretto A, Gruebele M, Kelly JW. *Proc. Natl. Acad. Sci. U. S. A.* 2003; 100:3948. [PubMed: 12651955]
- (24). Ferguson N, Berriman J, Petrovich M, Sharpe TD, Finch JT, Fersht AR. *Proc. Natl. Acad. Sci. U. S. A.* 2003; 100:9814. [PubMed: 12897238]
- (25). Petrovich M, Jonsson AL, Ferguson N, Daggett V, Fersht AR. *J. Mol. Biol.* 2006; 360:865. [PubMed: 16784750]
- (26). Liu F, Du DG, Fuller AA, Davoren JE, Wipf P, Kelly JW, Gruebele M. *Proc. Natl. Acad. Sci. U. S. A.* 2008; 105:2369. [PubMed: 18268349]
- (27). Davis CM, Dyer RB. *J. Am. Chem. Soc.* 2013; 135:19260. [PubMed: 24320936]
- (28). Davis CM, Dyer RB. *Biochemistry.* 2014; 53:5476. [PubMed: 25121968]
- (29). Wirth AJ, Liu Y, Prigozhin MB, Schulten K, Gruebele M. *J. Am. Chem. Soc.* 2015; 137:7152. [PubMed: 25988868]
- (30). Deechongkit S, Nguyen H, Powers ET, Dawson PE, Gruebele M, Kelly JW. *Nature.* 2004; 430:101. [PubMed: 15229605]
- (31). Lane TJ, Bowman GR, Beauchamp K, Voelz VA, Pande VS. *J. Am. Chem. Soc.* 2011; 133:18413. [PubMed: 21988563]
- (32). Jaeger M, Nguyen H, Dendle M, Gruebele M, Kelly JW. *Protein Sci.* 2007; 16:1495. [PubMed: 17586778]
- (33). Jager M, Dendle M, Kelly JW. *Protein Sci.* 2009; 18:1806. [PubMed: 19565466]
- (34). Tremmel S, Beyermann M, Oschkinat H, Bienert M, Naumann D, Fabian H. *Angew. Chem., Int. Ed.* 2005; 44:4631.
- (35). Andrushchenko VV, Vogel HJ, Prenner EJ. *J. Pept. Sci.* 2007; 13:37. [PubMed: 17031869]
- (36). Williams S, Causgrove TP, Gilmanshin R, Fang KS, Callender RH, Woodruff WH, Dyer RB. *Biochemistry.* 1996; 35:691. [PubMed: 8547249]
- (37). Manning MC, Woody RW. *Biopolymers.* 1987; 26:1731. [PubMed: 3663854]

- (38). Koepf EK, Petrassi HM, Ratnaswamy G, Huff ME, Sudol M, Kelly JW. *Biochemistry*. 1999; 38:14338. [PubMed: 10572009]
- (39). Koepf EK, Petrassi HM, Sudol M, Kelly JW. *Protein Sci*. 1999; 8:841. [PubMed: 10211830]
- (40). Viguera AR, Arrondo JLR, Musacchio A, Saraste M, Serrano L. *Biochemistry*. 1994; 33:10925. [PubMed: 8086409]
- (41). Knapp S, Mattson PT, Christova P, Berndt KD, Karshikoff A, Vihinen M, Smith CIE, Ladenstein R. *Proteins: Struct., Funct., Genet*. 1998; 31:309. [PubMed: 9593201]
- (42). Reid KL, Rodriguez HM, Hillier BJ, Gregoret LM. *Protein Sci*. 1998; 7:470. [PubMed: 9521124]
- (43). Jager M, Dendle M, Fuller AA, Kelly JW. *Protein Sci*. 2007; 16:2306. [PubMed: 17766376]
- (44). Nicholson EM, Scholtz JM. *Biochemistry*. 1996; 35:11369. [PubMed: 8784192]
- (45). Yang WJ, Griffiths PR, Byler DM, Susi H. *Appl. Spectrosc*. 1985; 39:282.
- (46). Arrondo JLR, Blanco FJ, Serrano L, Goni FM. *FEBS Lett*. 1996; 384:35. [PubMed: 8797798]
- (47). Susi H, Byler DM. *Methods Enzymol*. 1986; 130:290. [PubMed: 3773736]
- (48). Wang T, Xu Y, Du DG, Gai F. *Biopolymers*. 2004; 75:163. [PubMed: 15356870]
- (49). Hilario J, Kubelka J, Keiderling TA. *J. Am. Chem. Soc*. 2003; 125:7562. [PubMed: 12812496]
- (50). Maness SJ, Franzen S, Gibbs AC, Causgrove TP, Dyer RB. *Biophys. J*. 2003; 84:3874. [PubMed: 12770893]
- (51). Ranganathan R, Lu KP, Hunter T, Noel JP. *Cell*. 1997; 89:875. [PubMed: 9200606]
- (52). Jager M, Zhang Y, Bieschke J, Nguyen H, Dendle M, Bowman ME, Noel JP, Gruebele M, Kelly JW. *Proc. Natl. Acad. Sci. U. S. A*. 2006; 103:10648. [PubMed: 16807295]
- (53). Kubelka J, Keiderling TA. *J. Am. Chem. Soc*. 2001; 123:12048. [PubMed: 11724613]
- (54). Deacon GB, Phillips RJ. *Coord. Chem. Rev*. 1980; 33:227.
- (55). Urry DW, Peng SQ, Parker TM, Gowda DC, Harris RD. *Angew. Chem., Int. Ed. Engl*. 1993; 32:1440.
- (56). Langsetmo K, Fuchs JA, Woodward C. *Biochemistry*. 1991; 30:7603. [PubMed: 1854757]
- (57). Langsetmo K, Fuchs JA, Woodward C, Sharp KA. *Biochemistry*. 1991; 30:7609. [PubMed: 1906744]
- (58). Auzat I, Garel JR. *Protein Sci*. 1992; 1:254. [PubMed: 1304907]
- (59). Lindorff-Larsen K, Piana S, Dror RO, Shaw DE. *Science*. 2011; 334:517. [PubMed: 22034434]
- (60). Kellogg EH, Lange OF, Baker DJ. *Phys. Chem. B*. 2012; 116:11405.
- (61). Krivov SV. *J. Phys. Chem. B*. 2011; 115:12315. [PubMed: 21902225]
- (62). Ensign DL, Pande VS. *Biophys. J*. 2009; 96:L53. [PubMed: 19383445]
- (63). Shaw DE, Maragakis P, Lindorff-Larsen K, Piana S, Dror RO, Eastwood MP, Bank JA, Jumper JM, Salmon JK, Shan Y, Wriggers W. *Science*. 2010; 330:341. [PubMed: 20947758]
- (64). McGibbon RT, Pande VS. *J. Chem. Theory Comput*. 2013; 9:2900. [PubMed: 26583974]
- (65). Berezovska G, Prada-Gracia D, Rao F. *J. Chem. Phys*. 2013; 139:035102. [PubMed: 23883056]
- (66). S AB, Skrbic T, Covino R, Faccioli P. *Proc. Natl. Acad. Sci. U. S. A*. 2012; 109:2330. [PubMed: 22308345]
- (67). Ripoll DR, Vorobjev YN, Liwo A, Vila JA, Scheraga HA. *J. Mol. Biol*. 1996; 264:770. [PubMed: 8980685]
- (68). Yang AS, Honig B. *J. Mol. Biol*. 1993; 231:459. [PubMed: 8510157]
- (69). Gilson MK. *Proteins: Struct., Funct., Genet*. 1993; 15:266. [PubMed: 8456096]
- (70). You TJ, Bashford D. *Biophys. J*. 1995; 69:1721. [PubMed: 8580316]
- (71). Donnini S, Tegeler F, Groenhof G, Grubmuller H. *J. Chem. Theory Comput*. 2011; 7:1962. [PubMed: 21687785]
- (72). Goh GB, Knight JL, Brooks CL 3rd. *J. Chem. Theory Comput*. 2012; 8:36. [PubMed: 22337595]
- (73). Wallace JA, Shen JK. *J. Chem. Phys*. 2012; 137:184105. [PubMed: 23163362]
- (74). Lee J, Miller BT, Damjanovic A, Brooks BR. *J. Chem. Theory Comput*. 2014; 10:2738. [PubMed: 25061443]
- (75). Wallace JA, Wang Y, Shi C, Pastoor KJ, Nguyen BL, Xia K, Shen JK. *Proteins: Struct., Funct., Genet*. 2011; 79:3364. [PubMed: 21748801]

- (76). Arthur EJ, Yesselman JD, Brooks CL 3rd. *Proteins: Struct., Funct., Genet.* 2011; 79:3276. [PubMed: 22002886]
- (77). Liu H, Huo S. *J. Phys. Chem. B.* 2012; 116:646. [PubMed: 22126397]
- (78). Laricheva EN, Arora K, Knight JL, Brooks CL 3rd. *J. Am. Chem. Soc.* 2013; 135:10906. [PubMed: 23841875]
- (79). Maupin CM, Wong KF, Soudackov AV, Kim S, Voth GA. *J. Phys. Chem. A.* 2006; 110:631. [PubMed: 16405335]

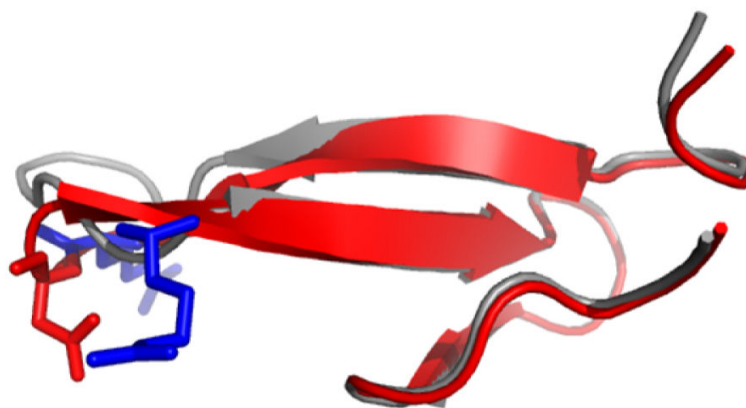


Figure 1. Aligned three-dimensional models of Pin1 (gray) and FiP35 (red) WW Domains obtained by X-ray diffraction. Arginines (blue) and aspartic acid (red) in the FiP35 sequence are displayed as sticks. (PDB entries: 1PIN, 2F21). The figure was prepared using PyMOL (www.pymol.org).

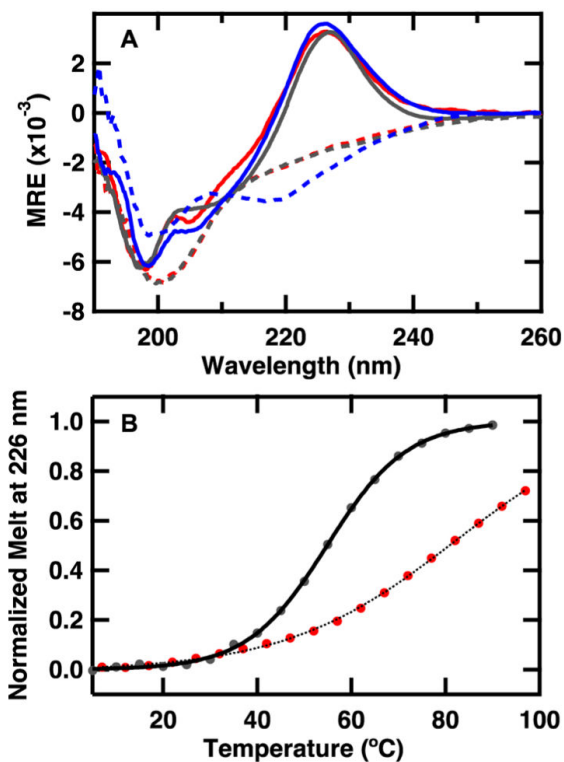


Figure 2.

(A) Far-UV CD spectra of 50 μM solutions of the FiP35 (red), FiP35 (blue) and Pin1 (gray) WW domains in 20 mM potassium phosphate buffer (pH 7.0) acquired at 5 °C (—) and 95 °C (---) during the course of a thermal denaturation in a 0.1 cm path length cell. (B) Thermal denaturation of the WW domains monitored by CD at 226 nm. The continuous line represents the best fit to the data to a sigmoid (eq 2).

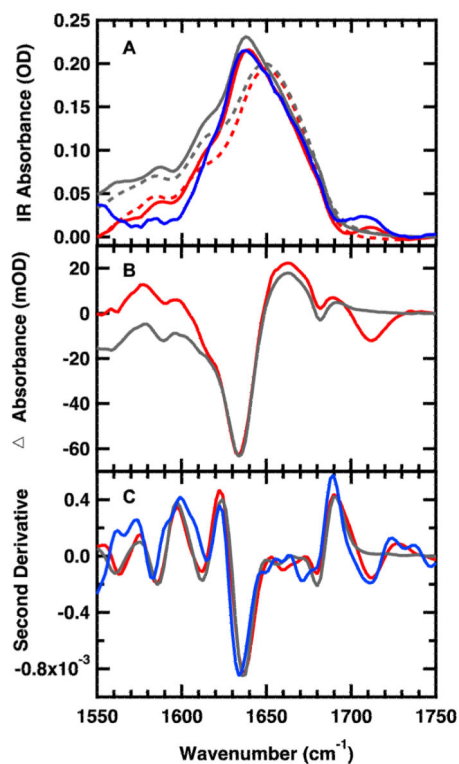


Figure 3. Temperature dependent FTIR spectra of 1.5 mM FiP35 (red), 50 μ M FiP35 (blue) and 1.5 mM Pin1 (gray) WW Domains in 20 mM potassium phosphate buffer (pH 7). (A) Absorption spectra in the Amide I' region, acquired at 20 °C (—) and 75 °C (---) during the course of a thermal denaturation. Spectra are normalized at 1636 cm^{-1} for comparison. (B) Difference spectra obtained by subtracting the spectrum at 20 °C from the spectra at 75 °C and normalized at 1636 cm^{-1} for comparison. (C) Normalized second derivative of FTIR spectra at 5 °C.

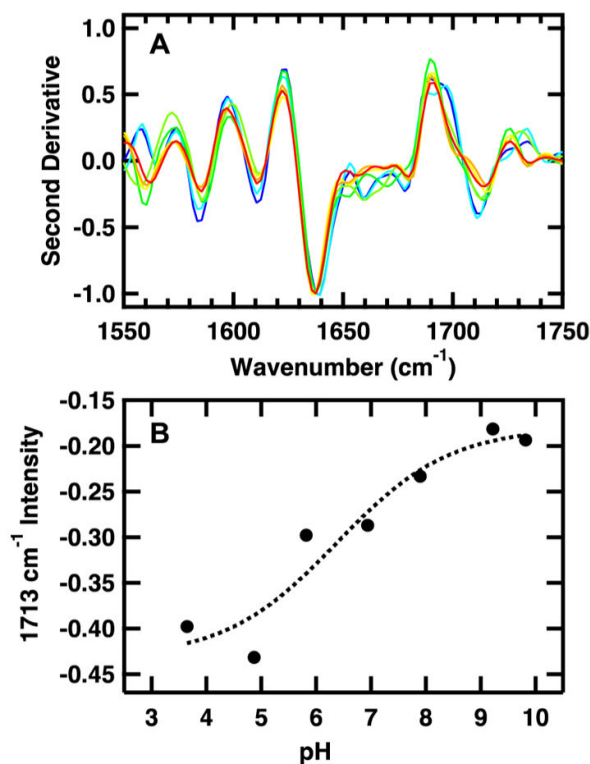


Figure 4. pH dependent FTIR spectra of 0.8 mM FiP35 WW Domain in buffer (see Experimental Section for buffer pH 4–10) at 20 °C. (A) Normalized second derivative of FTIR spectra pH 4–10 (blue–red). (B) pH titration of protonated carboxylic acid obtained by plotting the change in IR second derivative spectra at 1713 cm⁻¹ versus pH. The data are fit to an apparent 2-state model (eq 2).

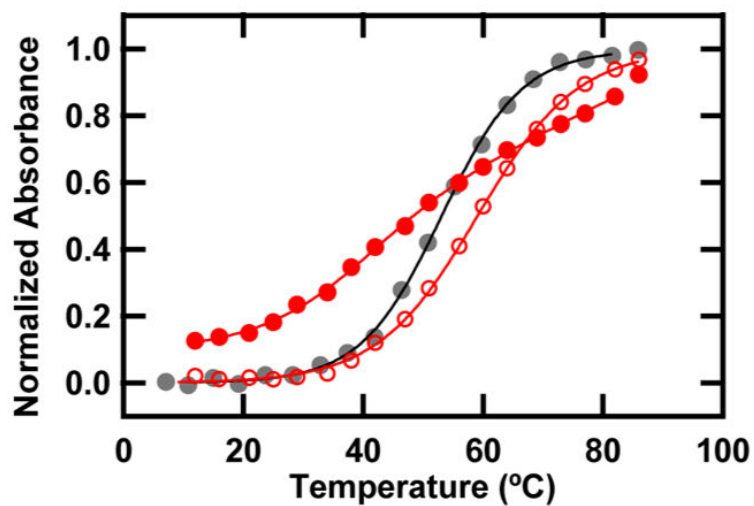


Figure 5. FTIR melt curves for the FiP35 (red) and Pin1 (gray) WW domains obtained by plotting the change in IR difference spectra at 1636 cm^{-1} (closed circles) and 1713 cm^{-1} (open circles) versus temperature. The data are fit to an apparent 2-state model and then normalized (eq 2).

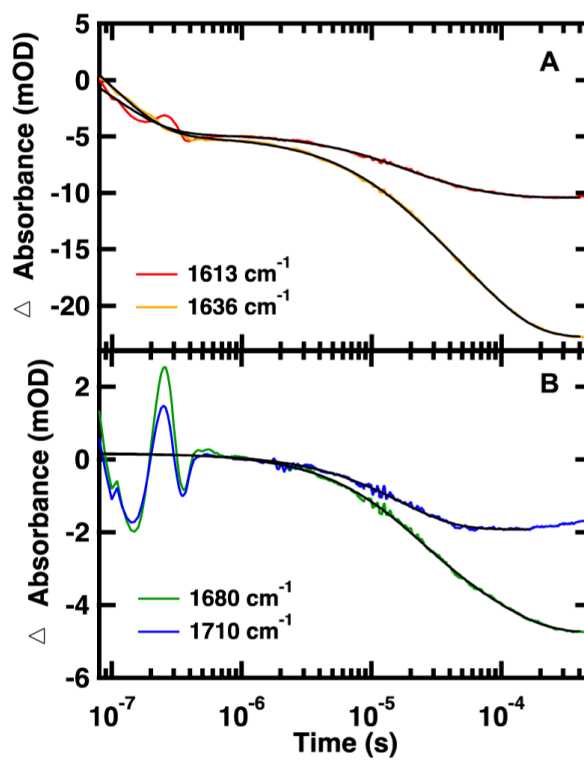


Figure 6. Representative IR T-jump relaxation kinetics of 2.0 mM FiP35 in 20 mM potassium phosphate buffer (pH 7) monitored in the amide I' spectral region at 1613, 1636, and 1680 cm^{-1} and the protonated carboxylic acid side chain of aspartic acid at 1710 cm^{-1} following a T-jump from 35 to 50 $^{\circ}\text{C}$. A triple exponential fit is overlaid on the 1613 and 1636 cm^{-1} kinetic trace, double exponential fit is overlaid on the 1680 cm^{-1} kinetic trace and a single exponential fit is overlaid on the 1710 cm^{-1} kinetic trace (eq 1).

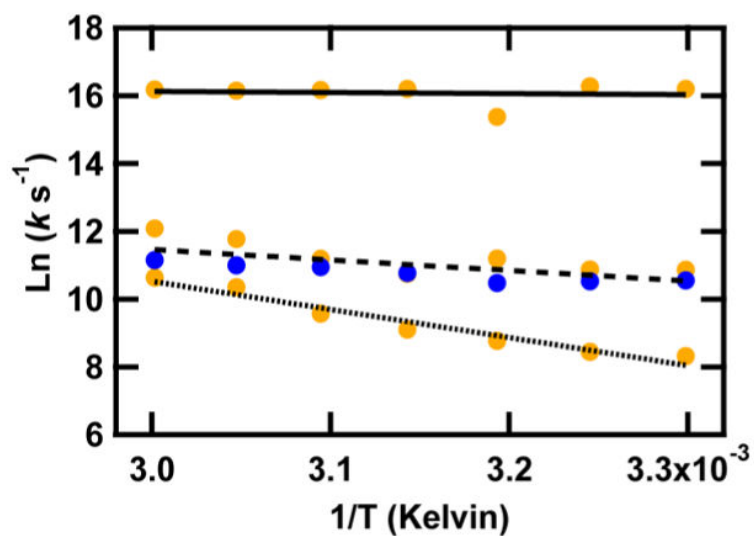


Figure 7. Arrhenius plot showing the temperature dependence of the folding region at 1636 cm^{-1} (orange) and 1710 cm^{-1} (blue). The values of T used for the $(1/T)$ axis are the final temperatures reached during the jump. k is the value obtained from a fit of the T-jump transient of FiP35. Lines are a result of fitting τ_1 (solid line), τ_2 (dashed line), and τ_3 (dotted line) of FiP35.

Table 1WW Domain Sequences and Stability^a

WW Domain	Sequence	Melting Temperature (°C)
WTPinI	KLPPGWEK <u>MR</u> SRSSGRVYYFNHITN <u>AS</u> QWERPSG	59 ³²
FIP35 PinI	KLPPGWEK <u>MR</u> SR-DGRVYYFNHITN <u>ASQ</u> FERPSG	78 ²⁶
R12A R16A FIP35	KLPPGWEK <u>MR</u> SA-DGAVYYFNHITN <u>ASQ</u> FERPSG	--

^a β -sheets are underlined, mutations are bold, turn residues with positive (blue) and negative charges (red).

Author Manuscript

Author Manuscript

Author Manuscript

Author Manuscript

Table 2

Relaxation Kinetics Following a Jump from 35 to 50 °C

FiP35 WW domain						
	A_1 (mOD)	τ_1 (ns)	A_2 (mOD)	τ_2 (μ s)	A_3 (mOD)	τ_3 (μ s)
1613 cm^{-1}	3.4 \pm 0.1	108 \pm 4	3.6 \pm 0.2	14.7 \pm 0.7	2.1 \pm 0.2	56 \pm 6
1636 cm^{-1}	5.0 \pm 0.1	95 \pm 2	4.8 \pm 0.1	13.9 \pm 0.2	13.0 \pm 0.1	70 \pm 1
1680 cm^{-1}			2.5 \pm 0.2	18 \pm 1	2.5 \pm 0.2	86 \pm 8
1710 cm^{-1}			1.9 \pm 0.1	17 \pm 1		

Author Manuscript

Author Manuscript

Author Manuscript

Author Manuscript