

SCIENTIFIC REPORTS



OPEN

Graphene growth on Ge(100)/Si(100) substrates by CVD method

Iwona Pasternak¹, Marek Wesolowski¹, Iwona Jozwik¹, Mindaugas Lukosius², Grzegorz Lupina², Pawel Dabrowski³, Jacek M. Baranowski¹ & Wlodek Strupinski¹

Received: 30 September 2015

Accepted: 01 February 2016

Published: 22 February 2016

The successful integration of graphene into microelectronic devices is strongly dependent on the availability of direct deposition processes, which can provide uniform, large area and high quality graphene on nonmetallic substrates. As of today the dominant technology is based on Si and obtaining graphene with Si is treated as the most advantageous solution. However, the formation of carbide during the growth process makes manufacturing graphene on Si wafers extremely challenging. To overcome these difficulties and reach the set goals, we proposed growth of high quality graphene layers by the CVD method on Ge(100)/Si(100) wafers. In addition, a stochastic model was applied in order to describe the graphene growth process on the Ge(100)/Si(100) substrate and to determine the direction of further processes. As a result, high quality graphene was grown, which was proved by Raman spectroscopy results, showing uniform monolayer films with FWHM of the 2D band of 32 cm^{-1} .

It is an irrefutable fact that the best quality graphene in terms of structural integrity and electrical properties is obtained by mechanical cleavage of highly oriented pyrolytic graphite¹. Although pristine graphene has a very low concentration of structural defects, the flake thickness and location are largely accidental. Moreover, the size is limited by the single crystal grains in the starting graphite, thus being of the order of micrometers. Several strategies are presently being pursued to achieve reproducible and scalable graphene on various substrates. One example is graphene's manufacturing technique based on conversion of SiC (0001) to graphene via sublimation of silicon atoms from SiC surface at high temperatures^{2,3}. SiC crystals are also used as substrates to perform Chemical Vapor Deposition (CVD) growth of epitaxial graphene⁴. Graphene on SiC is beneficial since SiC is a well-established substrate for high frequency electronics, light emitting devices, and radiation hard devices. However, the size of the initial SiC wafer (usually not larger than 4") is relatively small for applications based on large format graphene. Additionally, a very high temperature of the graphene growth process on SiC substrates (around 1600 °C) requires specialized equipment.

Recently, single crystal hexagonal boron nitride (h-BN) has been proposed as an ideal substrate for epitaxial growth of graphene⁵. Furthermore, it has been demonstrated that h-BN is an excellent substrate for electrical transport devices fabricated from exfoliated graphene flakes⁶. Nevertheless, treating it as a perfectly matched substrate leaves much to be desired when it comes to its size and controllable distribution on the applied substrates.

Lately, among many interesting methods developed worldwide⁷⁻⁹, CVD has been treated as one of the most auspicious, relatively cheap and readily available approaches to deposition of reasonably high quality graphene on non-carbide forming transition metal substrates such as Ni¹⁰⁻¹², Pd¹³, Ru^{14,15}, Ir¹⁶, Pt¹⁷⁻¹⁹, Cu²⁰, Co¹⁷. Among various substrates on which graphene can be synthesized a copper substrate seems to be the most versatile and suitable one. The first report on growing graphene on copper foil was prepared by Ruoff²¹. The Authors have achieved high quality graphene films on copper foil, and finally have fabricated a dual-gate FET device.

Since graphene and its extraordinary properties were described and analyzed in depth, it has been considered as a material to be implemented in various fields. One of the leading ideas which appears to be a progressive concept is to apply graphene to complementary metal oxide semiconductor technology (CMOS). In order to widen the range of possible graphene applications, for example in high frequency electronics, it is desirable to grow graphene films directly on arbitrary insulators or semiconductor surfaces instead of on a most commonly used copper substrate. Ideally such insulating or semiconducting layers are deposited on Si wafers used commonly in integrated circuit (IC) manufacturing. Growing graphene directly on Si wafer surface is extremely challenging due to the tendency to form carbides. This forces researchers into looking for alternatives, for instance

¹Institute of Electronic Materials Technology, Wolczynska 133, 01-919 Warsaw, Poland. ²IHP, Im Technologiepark 25, 15236 Frankfurt (Oder), Germany. ³Department of Solid States Physics, University of Lodz, Pomorska 149/153, Lodz, 90-236, Poland. Correspondence and requests for materials should be addressed to I.P. (email: iwona.pasternak@itme.edu.pl)

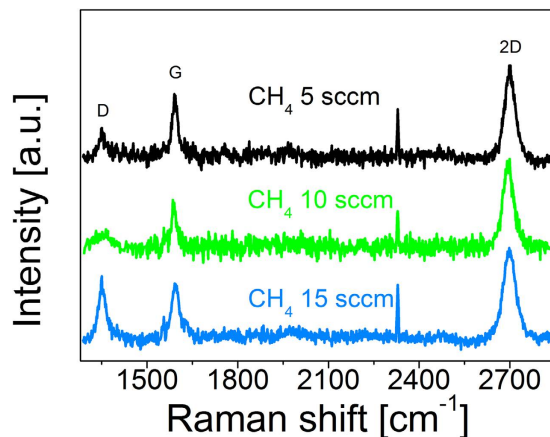


Figure 1. Raman spectra for 3 different methane flow settings.

offered by germanium substrates²². In their case carbide formation does not appear and in consequence, growth as such is feasible. What is more, germanium technology is compatible with CMOS technology, and therefore there is no need for introducing any changes to the already existing technology. Additionally, in order to create a device structure one can perform selective growth of germanium layers and thereby grow graphene on a pre-defined device area. These advantages were exploited to grow high quality graphene on Ge(110)/Si(110) wafers²³. Nevertheless, CMOS technology based on Si(100) wafers and this particular crystallographic orientation belong to the mainstream of Si IC fabrication.

In this paper, we intend to present, for the first time, CVD growth of graphene on epitaxial Ge(100) layers deposited on Si(100) wafers, which is the preferred wafer orientation in CMOS technology. The cost advantage offered by this approach is linked with the bulk buying of wafers and what is even more important manufacturing compatibility of Si(100). Additionally, when compared with techniques described in other reports²³ our method does not require any special pretreatment of Ge(100)/Si(100) wafers such as *ex-situ* removal of native oxides or preceding graphene growth with the deposition of fresh Ge layers, which, without a doubt adds value to the fabrication process. As an alternative to direct growth, graphene transferring from a copper substrate is considered. Ruoff *et al.*²¹ showed that data obtained from a dual-gate FET device suggest that graphene films grown on Cu foil are of a reasonable quality, which is sufficient to encourage scientific society to continue improving the growth process to achieve a material quality equivalent to that of natural exfoliated graphite. However, one should be aware of contamination of copper associated with graphene transfer from Cu and present in the transferred layers²⁴. Since CMOS technology requires as high material purity and stringent contamination control as possible, we aimed at a high quality of graphene transferred from Ge(100)/Si(100) structure avoiding the metal contamination problems. Obtaining high quality graphene grown on Ge(100)/Si(100) wafers which can be subsequently either transferred using the wafer bonding approach or used directly in the fabrication of e.g. graphene THz devices is essential²⁵, thus opening the way for this new material to get integrated with Si microelectronics. In this paper we present how to obtain large area graphene in a reproducible way directly on Ge(100)/Si(100) substrates. In our experiment we attempted to grow graphene on solid Ge films instead of melted substrates²², which guarantees full control over the growth process and brings additional benefits such as feasibility of reusing substrates, easiest characterization, smoother surface as well as, possibility of transferring graphene²⁶.

Additionally, in the literature there are examples of graphene growth modeling; however, the vast majority of these papers are related to graphene synthesis on substrates other than Ge(100)/Si(100), including mostly copper foils^{27–29}. Nevertheless, there is also a need to model the graphene growth process on Ge(100)/Si(100) substrates because this can provide useful information on the control and optimization of the graphene growth process, which can be especially vital for the industrial-scale production. Therefore, the stochastic model is applied in order to describe the graphene growth process.

Result and Discussion

In order to determine and understand the kinetics of the graphene growth process on the Ge(100)/Si(100) substrate, the nucleation stage was investigated as a function of methane flow. During the processes different methane flow were introduced into the growth chamber. The processes were performed in such a way that the results of the initial steps of graphene growth were observed. In other words, the processes were stopped before graphene formed continuous films and, hence, graphene flakes rather than continuous films were visible on the surface of Ge(100)/Si(100). Next, after having obtained a set of samples partially covered by graphene, a round of longer processes was completed with the aim of observing the formation of a continuous graphene film and the accompanying side effects like discontinuities, grain boundaries or secondary (2ML, 3ML or higher) graphene ad-layers.

At the first attempt the Raman quality was investigated as a function of methane partial pressure. As for the preset growth parameters, CH₄ flow varied from 5, through 10, up to 15 sccm (standard cubic centimeters per minute). The collected Raman spectroscopy results confirm the presence of graphene layers in the case each of the examined samples (Fig. 1). Widened 2D bands FWHM (Full Width of Half Maximum) of 2D bands is 50 cm⁻¹, 42 cm⁻¹ and 42 cm⁻¹ for 15, 10 and 5 sccm, respectively) relative to free-standing graphene indicate that on the

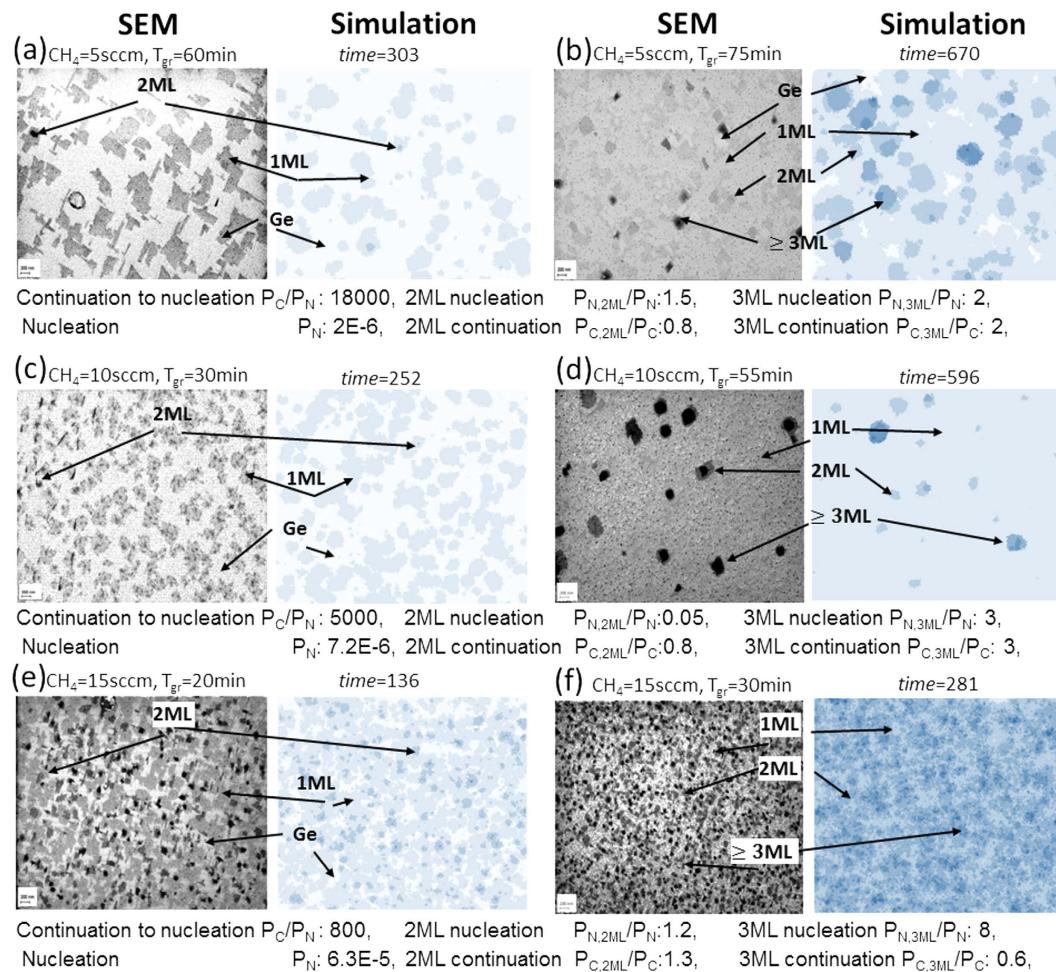


Figure 2. SEM images and simulation images for samples grown on Ge(100)/Si(100) with CH_4 flow of (a) 5 sccm graphene flakes, (b) 5 sccm continuous film, (c) 10 sccm graphene flakes, (d) 10 sccm continuous film, (e) 15 sccm graphene flakes (f) 15 sccm continuous film. Scale bar is 200 nm. The simulation parameters are indicated below for each pair of growths. The simulations were conducted on regular lattice frame of 500×500 unit cells.

surfaces of the samples more than one layer of graphene was obtained³⁰. However, the 2D/G intensity ratios (2.4, 2.1 and 1.8 for 5, 10 and 15 sccm, respectively) suggest that the monolayer of graphene is present on the surface as well^{31,32}. This observation is easier to understand when one takes into account that the Raman spectrometer laser spot diameter on the samples surface was approximately $0.3\mu\text{m}$ so during the measurement the laser spot enabled detection of graphene from areas containing one and a few layers. This co-existence of mono and multi-layers was also clearly seen in SEM images (Fig. 2b,d,f). Dark features identified as nuclei of multilayers of graphene were observed on a monolayer of graphene. The relatively high $I_{\text{D}}/I_{\text{G}}$ ratio equal to 0.4, 0.57 and 0.76 for 5, 10 and 15 sccm, respectively can be accounted for by two factors, namely the distance between isolated defects or the existence of very small graphene monocrystalline domains of the order of 40nm ^{33,34}.

There is a direct correlation between carbon transport (as methane) and the growth rate of graphene flakes. The methane flow can also imply the nucleation rate (i.e. the number of new flake nucleations per time unit). In the simplest view, if growth is mass transport-limited, both values (growth rate and nucleation rate) should be close to proportional to the precursor partial pressure. In such a case, the precursor flow value does not affect the overall growth pattern of flakes, except the timescale. Several factors can disrupt this image. Nucleation can be quickly saturated by a finite number of nucleation defects on the substrate surface, as a result of which the growth rate increases faster than the nucleation rate. On the other hand, nucleation can get more efficient when the precursor flow is increased because of the limited migration of surface ad-atoms. The higher the precursor partial pressure, the shorter the time for single ad-atom to migrate and attach to a flake edge before getting companions and nucleating a new flake (even without any nucleation defects).

SEM images (Fig. 2a,c,e) show that the patterns of graphene flakes grown on Ge(100)/Si(100) substrates with the CH_4 flow equal to 5, 10 and 15 sccm are different and the relationship between the growth rate and the nucleation rate was not the same for various CH_4 flows. In each pair of images (SEM and simulation) different areas are marked with arrows. The varied areas in bluescale in simulation pictures correspond to the number of graphene

layers (1ML, 2ML, 3ML, 4ML) seen in SEM images and the lighter blue areas in simulation images represent uncovered Ge surface, without graphene on top. Pictures suggest that the nucleation rate increases faster than the growth rate with raising the CH₄ flow. Besides, the images show some secondary (2ML) or even 3ML or 4ML nucleations overgrowing the first layer (1ML). These ad-layers seem to nucleate and to increase their size with a highly varying rates, when comparing all three pictures.

In order to provide a more precise quantitative interpretation of both the growth statistics and the observed growth patterns of graphene on Ge(100)/Si(100) substrates we have developed a Monte-Carlo type model of the layered growth. The model employs two primary parameters, P_N and P_C as follows:

- (1) P_N is the probability of growing the graphene unit cell in coordinates of a single unit cell (on the material below) per time unit, if it does not have any already grown closest neighbours – the “nucleation” case.
- (2) P_C is the probability of growing the graphene unit cell in coordinates of a single unit cell per unit time, if its closest neighbour has been already grown – the “continuation” case.

The later used convenient parameter is a ratio of these two probabilities (P_C/P_N). The employed term “unit cell” assigns an arbitrary unit lattice area, which in the limiting case can be the crystal lattice unit cell. When more than one nearest neighbour is already grown, the growth probability can be simply set as the additive function of these neighbours.

The model applies a pair of secondary parameters: 1) the probability ratio of secondary nucleation on the already grown graphene layer to nucleation on the substrate - ($P_{N,2ML}/P_N$), 2) the probability ratio of continuation on the graphene layer to continuation on the substrate - ($P_{C,2ML}/P_C$). These factors describe the formation of the ad-layers. If analogous parameters were required for the description of higher order (ad-) ad-layers, they would be denoted as ($P_{N,3ML}/P_N$), ($P_{C,3ML}/P_C$), ($P_{N,4ML}/P_N$) or similar.

The simulation process consisted of repeating the following sequence: 1) Randomly selecting coordinates of a unit cell, 2) Checking the growth state of the nearest neighbour unit cells and assigning the growth probability value, 3) Drawing the occurrence of a given growth step event. The calculations were usually completed for the square lattice frame of 1000×1000 or 500×500 unit cells. The computed image of the primary (1ML) pattern (the covered area share and total number of nucleations per frame) does not depend on the calculation frame dimension, when scaling the parameters as below.

$$\text{nucleation: } (P_N)_B = (P_N)_A \cdot \frac{(D_A^2)}{(D_B^2)} \quad (1)$$

$$\text{continuation: } (P_C)_B = (P_C)_A \cdot \frac{D_B}{D_A} \quad (2)$$

where D is the calculation image frame dimension (in unit cells), whereas A and B assign two calculation setups. If the P_C/P_N ratio and image dimension are fixed, the image primary pattern does not depend on the P_N absolute value, when scaling the time as below:

$$\text{time}_B = \text{time}_A \cdot \frac{(P_N)_A}{(P_N)_B} \quad (3)$$

In conclusion, the primary (1ML) image is defined by only two values. The first is the function of time describing progress in the growth process: $\frac{\text{time} \cdot P_C}{D}$. The second is the function of the P_C/P_N ratio and the image dimension D describing growth. It is easy to show that this function is a quotient: $\frac{P_C}{P_N \cdot D^3}$. However, this low number of degrees of freedom can be seen as an introductory configuration of the considered model.

Several attempts to fit the microscope images of graphene on Ge(100)/Si(100) substrates with simulation have quickly given quite satisfactory patterns. Below (Fig. 2) there are results for three analysed pairs of growths (the only difference within a pair is the process time). These simulations were completed on a regular lattice with a calculation frame of 500×500 unit cells. Below each pair of images, relevant simulation parameters are indicated. The specified $P_{N,\dots}$ and $P_{C,\dots}$ values correspond to the probabilities of the occurrence of growth of a graphene unit cell after single drawing of the coordinates of this unit cell (in a single sampling of this cell). The “time” value corresponds to the average number of samplings of a single unit cell (the total number of samplings divided by the total number of unit cells).

The fitting results show that the (P_C/P_N) ratio decreases significantly with increasing the CH₄ partial pressure – the continuation of the existing flakes becomes less preferred to nucleation of the new ones. Faster raising of the nucleation rate than the lateral growth rate with CH₄ flow suggests that the nucleation is suppressed by some process, especially at a low precursor partial pressure. The most obvious explanation is as has been mentioned earlier: nucleation can be prevented by the migration of ad-atoms to the nearby flakes; when increasing the precursor flow, the time, in which ad-atom is lone, shortens. Before reaching a flake, the ad-atom transits into the ad-atom cluster. The clustering slows or stops migration and results in the nucleation.

The next parameter ($P_{N,2ML}/P_N$), which is related to the secondary (2ML) layers, does not exhibit a monotonic behaviour. The 2ML nucleation ratio ($P_{N,2ML}/P_N$) and even directly the nucleation rate alone ($P_{N,2ML}$) shows a strong minimum around the medium CH₄ flow, while outside this minimum they depend on the CH₄ flow in the same manner as in the case of the primary nucleation – the $P_{N,2ML}/P_N$ ratio is almost constant there. We cannot offer a clear explanation for this effect yet. Such explanation would have to distinguish between the Ge(100)/

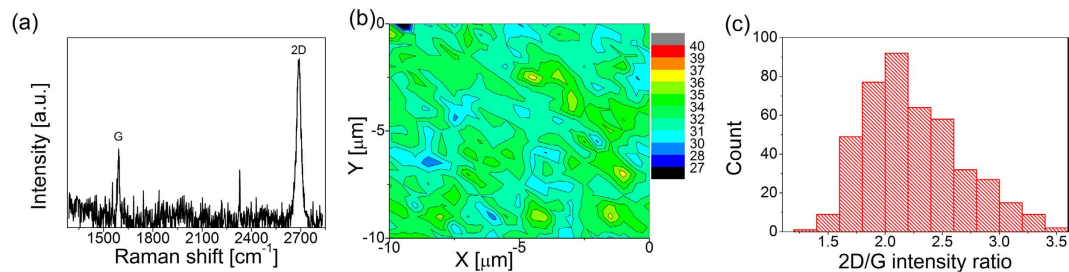


Figure 3. (a) Raman spectrum, (b) micro-Raman map of FWHM of 2D band and (c) histogram of 2D/G intensity ratio of optimized graphene film on Ge(100)/Si(100) substrate.

Si(100) surface area and the 1ML graphene layer area as a substrate. It can, however, be supposed that the clustering process of ad-atoms includes an intermediate step during which they become exceptionally mobile on the graphene 1ML surface (while this does not take place on other surfaces) and this intermediate step is preferred by the medium precursor flow through a surface or by a gas phase reaction. Despite these differences in nucleation, the growth continuation parameter $P_{C,2ML}/P_C$ regarding the secondary (2ML) graphene layer does not significantly depend on the CH₄ partial pressure and is close to $P_{C,2ML}/P_C = 1$. It means that the continuation of flakes has a similar growth rate for both 1ML and 2ML flakes.

The nucleation rate of the higher secondary layers (3ML, etc.) seems to grow monotonically with the CH₄ flow and to grow faster than the 1ML nucleation rate, the $P_{N,3ML}/P_N$ ratio reveals a significant increase. This can be seen as the secondary (2ML) flakes are very often overgrown by next-order layers, more often if the CH₄ flow is higher. While the nucleation rate of higher-order (>2ML) ad-layers grow faster than the 1ML nucleation rate, the continuation rate seems to be more similar to the 1ML continuation rate.

The relation between the experimental growth time (T_{gr}) and simulation *time* parameter within growth pairs is not directly proportional. This affected correlation and confirms the existence of a time offset before the nucleation becomes visible. The delay was clearly observed in other growth experiments, not shown in this paper. This offset partially results from the specific operation of the hardware; however, in its larger part it has to be induced by another factor. Most probably, it is related to the nucleation stage of 1ML graphene on Ge(100)/Si(100). The nucleation cluster with just a few atoms collects subsequent atoms much slower than a flake, until getting a regular lattice and becoming visible in SEM images.

To conclude, the growth simulation analysis leads to three distinct conclusions. Firstly, the nucleation rate of graphene on Ge(100)/Si(100) is affected by the migration of ad-atoms on the surface and this nucleation can be increased by accelerated clustering of ad-atoms in a high precursor partial pressure. Secondly, there is a striking difference between the first ad-layer nucleation on graphene (2ML) and primary nucleation on germanium since the ad-layer (2ML) nucleation rate has a strong minimum for a particular precursor flow. Thirdly, the nucleation, as such is a relatively slowly progressing step, introducing a time delay before substantial covering by graphene begins.

On the basis of the above mentioned results further optimization steps in the growth process of graphene on Ge(100)/Si(100) substrates were made. The methane flow was reduced and the time of growth was extended. As a result, a uniform graphene film was achieved. Figure 3 shows a Raman spectrum, micro-Raman map of FWHM of the 2D band and histogram of 2D/G intensity ratio for the obtained graphene layer. One can notice that there is no D peak in the spectrum. In addition, highly uniform, narrow 2D bands (32 cm⁻¹) and the 2D/G intensity ratio higher than 2 are observable, which confirms the presence of a high quality and homogeneous monolayer graphene film.

Additionally, in order to confirm the presence of the high quality monolayer of graphene on Ge(100)/Si(100) substrates STM measurements were performed. Figure 4 shows the atomic-resolution STM image of graphene on the said substrate. The characteristic honeycomb structure of graphene can be observed and single carbon atoms can be distinguished.

Conclusions

In summary, the influence of the methane flow on the graphene nucleation mechanism, growth rate, uniformity and structural quality has been investigated. High quality graphene has been grown on Ge(100)/Si(100) substrates, which has been mainly confirmed by the results of Raman spectroscopy measurements. Also, the presented simulation and quantity analysis show that graphene growth on Ge(100)/Si(100) substrate can be described by a simple stochastic model with a very low number of parameters. The influence of the substrate lattice structure, extended defects and growth anisotropy are restrained enough to make such a description possible. The excellent alignment between the experiment and the simulation means that in the course of further investigation a convincing physical model can be proposed to describe the whole process of graphene growth. The presented attempt, including particularly direct growth on the Ge(100)/Si(100) substrate combined with modeling of the growth process, was shown here as a viable alternative enabling the introduction of graphene with its unique features to CMOS technology.

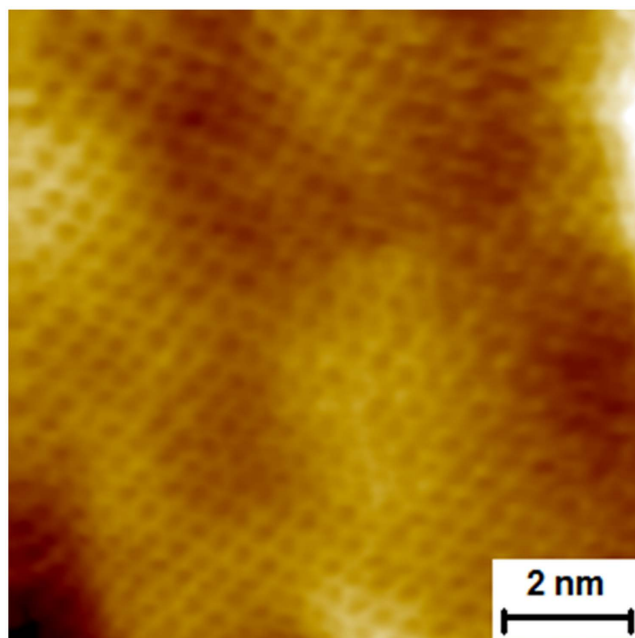


Figure 4. Atomic resolution STM of graphene on a Ge(100)/Si(100) substrate.

Methods

Sample preparation. In the present work graphene films were synthesized in a 6-inch Aixtron Black Magic system by the CVD method. As a substrate we used (100)-oriented Ge layers deposited by the CVD method on Si (100) wafers. To ensure optimal temperature conditions, thus preventing Si diffusion through a Ge layer and Ge melting, the temperature was monitored and set separately and simultaneously in bottom and top heaters. The temperature was chosen in the range between 900 °C and 930 °C with a temperature ramp up rate of 20 °C/min. During the process of graphene deposition the pressure range of 700 to 780 mbar was sustained. Methane gas was used as a carbon precursor in the mixture of Ar and H₂ in the ratio of 20:1. It was found that the optimal roughness of the substrate is achieved when the step growth is preceded by the substrate's annealing at pure hydrogen atmosphere in order to *in-situ* reduce native oxides³⁵.

Characterizations. The characterization of the properties of graphene grown directly on Ge(100)/Si(100) substrates was performed by Raman spectroscopy using a Renishaw system with a 532 nm Nd:YAG laser as an excitation source with the laser spot diameter on the sample surface of approximately 0.3 μm. The surface of graphene was investigated using the In-Lens secondary electrons detector (true SE1) and the Energy selective Backscattered electron (EsB, low-loss BSE) detector, both positioned on the optical axis of the Gemini™ column of the Auriga CrossBeam Workstation (Carl Zeiss). The energy of primary electrons in the scanning beam was set at 500 eV so as to reveal the morphology of the ultra-thin layer of graphene (single layer) and simultaneously distinguish different phases present on the substrate based on the compositional contrast (low-loss BSE). STM measurements were conducted under base pressure of 2×10^{-10} mbar with a Multiprobe P system made by Omicron GmbH.

References

- Novoselov, K. S. *et al.* Electric Field Effect in Atomically Thin Carbon Films. *Science* **306**, 666–669 (2004).
- Berger, C. *et al.* Electronic confinement and coherence in patterned epitaxial graphene. *Science* **312**, 1191–1196 (2006).
- de Heer, W. A. *et al.* Epitaxial graphene. *Solid State Commun.* **143**, 92–100 (2007).
- Strupinski, W. *et al.* Graphene Epitaxy by Chemical Vapor Deposition on SiC. *Nano Lett.* **11**, 1786–1791 (2011).
- Yang, Wei *et al.* Epitaxial growth of single-domain graphene on hexagonal boron nitride. *Nature Materials* **12**, 792–797 (2013).
- Dean, C. *et al.* Boron nitride substrates for high-quality graphene electronics. *Nature Nanotechnology* **5**, 722–726 (2010).
- Wang, H., Sun, K., Tao, F., Stacchiola, D. J. & Hu, Y. H. 3D Honeycomb-Like Structured Graphene and Its High Efficiency as Counter Electrode Catalysts for Dye-sensitized Solar Cells. *Angew. Chem. Int. Ed.* **52**, 9210 (2013).
- Wei, W. & Hu, Y. H. Synthesis of carbon nanomaterials for dye-sensitized solar cells. *Int. J. Energy Res.* **39**, 842 (2015).
- Wei, W., Sun, K. & Hu, Y. H. Synthesis of 3D Cauliflower-fungus-like Graphene from CO₂ as Highly Efficient Counter Electrode Material for Dye-sensitized Solar Cells (*communication*). *J. Mater. Chem. A* **2**, 16842 (2014).
- Eizenberg, M. & Blakely, J. M. Carbon Monolayer Phase Condensation on Ni (111). *Surf. Sci.* **82**, 228–236 (1979).
- Kim, K. S. *et al.* Large-scale pattern growth of graphene films for stretchable transparent electrodes. *Nature* **457**, 706–710 (2009).
- Reina, X. *et al.* Large area, few-layer graphene films on arbitrary substrates by chemical vapor deposition. *Nano Lett.* **9**, 30–35 (2009).
- Kwon, S.-Y. *et al.* Growth of semiconducting graphene on palladium. *Nano Lett.* **9**, 3985–3990 (2009).
- Sutter, P. W., Flege, J.-I. & Sutter, E. A. Epitaxial graphene on ruthenium. *Nat. Mater.* **7**, 406–411 (2008).
- Marchini, S., Gunther, S. & Wintterlin, J. Scanning tunneling microscopy of graphene on Ru(0001). *Phys. Rev. B* **76**, 075429–37 (2007).
- Coraux, J., N'Diaye, A. T., Busseand, C. & Michely, T. Structural coherency of graphene on Ir(111). *Nano Lett.* **8**, 565–570 (2008).
- Hamilton, J. C. & Blakely, J. M. Carbon segregation to single-crystal surfaces of Pt, Pd, and Co. *Surf. Sci.* **91**, 199–217 (1980).

18. Land, T. A., Michely, T., Behm, R. J., Hemminger, J. C. & Comsa, G. STM Investigation of Single Layer Graphite Structures Produced on Pt(111) by Hydrocarbon Decomposition. *Surf. Sci.* **264**, 261–270 (1992).
19. Sutter, P. & Sadowski, J. T. E. Sutter Graphene on Pt(111): growth and substrate interaction. *Phys. Rev. B* **80**, 245411–20 (2009).
20. Mueller-Niclas, S. *et al.* Growing graphene on polycrystalline copper foils by ultra-high vacuum chemical vapor deposition. *Carbon* **78**, 347–355 (2014).
21. Li, X. *et al.* Large-Area Synthesis of High-Quality and Uniform Graphene Films on Copper Foils. *Science* **324**, 1312–1314 (2009).
22. Lippert, Gunther *et al.* Graphene grown on Ge(001) from atomic source. *Carbon* **75**, 104–112 (2014).
23. Lee, Jae-Hyun *et al.* Wafer-Scale Growth of Single-Crystal Monolayer Graphene on Reusable Hydrogen-Terminated Germanium. *Science* **344**, 286–289 (2014).
24. Lupina, G. *et al.* Residual metallic contamination of transferred chemical vapor deposited graphene. *ACS Nano* **9**, 4776–4785 (2015).
25. Di Lecce, V. *et al.* Graphene-base heterojunction transistor: An attractive device for terahertz operation. *Trans. Electron Dev.* **60**, 42634268 (2013).
26. Ciuk, Tymoteusz *et al.* The Properties of CVD Graphene Transferred by High-Speed Electrochemical Delamination. *J. Phys. Chem. C* **117**, 20833–20837 (2013).
27. Meca Esteban, Lowengrub John, Kim Hokwon, Mattevi Cecilia & Shenoy Vivek, B. Epitaxial Graphene Growth and Shape Dynamics on Copper: Phase-Field Modeling and Experiments. *Nano Lett.* **13**, 5692–5697 (2013).
28. Kim HoKwon, Saiz Eduardo, Chhowalla Manish & Mattevi Cecilia. Modeling of the self-limited growth in catalytic chemical vapor deposition of graphene. *New Journal of Physics* **15**, 053012–26 (2013).
29. Wu, Jian & Huang, Qiang. Graphene growth process modeling: a physical–statistical approach. *Applied Physics A* **116**, 1747–1756 (2014).
30. Graf, D. *et al.* Spatially Resolved Raman Spectroscopy of Single- and Few-Layer Graphene. *Nano Lett.* **7**, 238–242 (2007).
31. Ferrari, A. C. *et al.* Raman Spectrum of Graphene and Graphene Layers. *Phys. Rev. Lett.* **97**, 189401–04 (2006).
32. Ferrari, A. C. Raman spectroscopy of graphene and graphite: Disorder, electron–phonon coupling, doping and nonadiabatic effects. *Solid State Communications* **143**, 47–57 (2007).
33. Pimenta, M. A. *et al.* Studying disorder in graphite-based systems by Raman spectroscopy. *Phys. Chem. Chem. Phys.* **9**, 1276–1290 (2007).
34. Cancado, L. G. *et al.* Quantifying defects in graphene via Raman spectroscopy at different excitation energies. *Nano Lett.* **11**, 3190–3196 (2011).
35. Hasegawa, Ryosuke, Kurosawa, Toshio & Yagihashi, Tetsuo. Hydrogen Reduction of Germanium Dioxide. *Transactions of the Japan Institute of Metals* **13**, 39–44 (1972).

Acknowledgements

The research leading to these results has received funding from the European Union Seventh Framework Programme under grant agreement n°604391 Graphene Flagship. Funding through STREP project GRADE (317839) is gratefully acknowledged. The authors thank Y. Yamamoto of IHP for Ge substrate preparation.

Author Contributions

As part of this work, I.P. was responsible for the preparation of graphene films, their characterization using Raman spectroscopy and general interpretation of the obtained Raman and SEM results. Moreover, she designed, planned, managed and conducted the entire experiment as well as collected and subsequently analyzed complete experimental data. The research task of M.W. included the development of the presented stochastic model. I.J., PhD performed SEM measurements and P.D. conducted the UHV STM measurements, thus enabling characterization of the samples. M.L. together with G.L. and J.M.B. exerted influence on the shape of the paper by coming up with the ideas forming the substance of this work. Last but not least, W.S. supported both the growth part as well as the interpretation part of the experiment. In addition, he coordinated a wide variety of research activities and closely supervised the writing process. It has to be highlighted that all authors took part in a great number of fruitful discussions, which helped to create the article in its present form.

Additional Information

Competing financial interests: The authors declare no competing financial interests.

How to cite this article: Pasternak, I. *et al.* Graphene growth on Ge(100)/Si(100) substrates by CVD method. *Sci. Rep.* **6**, 21773; doi: 10.1038/srep21773 (2016).



This work is licensed under a Creative Commons Attribution 4.0 International License. The images or other third party material in this article are included in the article's Creative Commons license, unless indicated otherwise in the credit line; if the material is not included under the Creative Commons license, users will need to obtain permission from the license holder to reproduce the material. To view a copy of this license, visit <http://creativecommons.org/licenses/by/4.0/>