

SCIENTIFIC REPORTS



OPEN

Susceptibility of outer hair cells to cholesterol chelator 2-hydroxypropyl- β -cyclodextrine is prestin-dependent

Received: 24 September 2015

Accepted: 29 January 2016

Published: 23 February 2016

Satoe Takahashi¹, Kazuaki Homma^{1,3}, Yingjie Zhou², Shinichi Nishimura^{4,5}, Chongwen Duan¹, Jessie Chen¹, Aisha Ahmad², Mary Ann Cheatham^{2,3} & Jing Zheng^{1,3}

Niemann-Pick type C1 disease (NPC1) is a fatal genetic disorder caused by impaired intracellular cholesterol trafficking. Recent studies reported ototoxicity of 2-hydroxypropyl- β -cyclodextrin (HP β CD), a cholesterol chelator and the only promising treatment for NPC1. Because outer hair cells (OHCs) are the only cochlear cells affected by HP β CD, we investigated whether prestin, an OHC-specific motor protein, might be involved. Single, high-dose administration of HP β CD resulted in OHC death in prestin wildtype (WT) mice whereas OHCs were largely spared in prestin knockout (KO) mice in the basal region, implicating prestin's involvement in ototoxicity of HP β CD. We found that prestin can interact with cholesterol *in vitro*, suggesting that HP β CD-induced ototoxicity may involve disruption of this interaction. Time-lapse analysis revealed that OHCs isolated from WT animals rapidly deteriorated upon HP β CD treatment while those from prestin-KOs tolerated the same regimen. These results suggest that a prestin-dependent mechanism contributes to HP β CD ototoxicity.

Cholesterol is an essential component of the eukaryotic plasma membrane, which plays important roles in many physiological processes. Alterations of cholesterol levels can modify physical properties of the cell membrane such as thickness and fluidity, thereby affecting various membrane proteins¹. In addition, direct binding of cholesterol to membrane proteins is reported to have functional importance². Signal transduction through lipid-raft formation also depends on the cholesterol content of the membrane³. One of the commonly used methods for membrane cholesterol manipulation is the use of cyclodextrins (CDs)⁴, a family of cyclic oligosaccharides consisting of α -D-glucopyranose molecules joined in a ring form. CDs can complex with hydrophobic molecules such as cholesterol through their hydrophobic core and enhance their solubility via their hydrophilic outer surface. Because of this amphipathic nature, CDs are widely used in a variety of applications in the food and pharmaceutical industries from mobilization of cholesterol to drug delivery⁵.

Recently, 2-hydroxypropyl- β -cyclodextrin (HP β CD) has attracted particular interest, as it was demonstrated to alleviate the cholesterol transport deficiency in cells isolated from Niemann-Pick disease type C1 (NPC1) patients⁶. NPC1 is a rare genetic disorder characterized by a failure to traffic intracellular cholesterol and lipids, causing progressive neural degeneration and early death in affected individuals⁷. Although studies in NPC1 animal models established the effectiveness of HP β CD^{8,9}, the compound is unfortunately ototoxic¹⁰ even in human NPC1 patients^{11,12}. Recent studies have reported that HP β CD-treated mouse cochleae exhibited loss of outer hair cells (OHCs), but not other cells in the organ of Corti (OC) or in other major organ systems regardless of the mode of administration^{10,13}. These observations suggest that OHCs are particularly vulnerable to cholesterol extraction by HP β CD, and that an OHC-specific mechanism may underlie the ototoxicity.

¹Department of Otolaryngology – Head and Neck Surgery, Feinberg School of Medicine, Northwestern University, Chicago IL 60611, USA. ²Department of Communication Sciences and Disorders, Northwestern University, Evanston, IL 60208, USA. ³Knowles Hearing Center, Northwestern University, Evanston, IL 60208, USA. ⁴Division of Bioinformatics and Chemical Genomics, Graduate School of Pharmaceutical Sciences, Kyoto University, Kyoto, 606-8501, Japan. ⁵Chemical Genomics Research Group, RIKEN Center for Sustainable Resource Science, Wako, Saitama 351-0198, Japan. Correspondence and requests for materials should be addressed to J.Z. (email: jzh215@northwestern.edu)

OHCs are sensory cells specialized for cochlear amplification, which mediates sensitivity and sharp frequency selectivity in mammals¹⁴. Prestin, an OHC-specific molecular motor protein, is required for this active mechanical amplification function^{15,16}. Although prestin belongs to a diverse anion transporter family, solute carrier protein 26 (SLC26), it (SLC26A5) is the only member that confers so-called electromotility on cells¹⁷. It is estimated that 60–75% of the OHC's lateral wall surface area is packed with ~11 nm particles, which are presumed to be comprised of prestin tetramers^{18,19}. As a membrane protein, prestin's function is significantly modulated by cholesterol manipulation^{20–22}. It is generally thought that cholesterol's effect on prestin is indirect and occurs by altering the physical properties of the lateral membrane (LM) where prestin resides, similar to numerous factors that change lipid membrane properties including membrane tension, temperature, and lipid thickness^{23–27}. However, it is not clear why OHCs are more vulnerable to HP β CD as compared to other cells in the OC.

In this study, we sought to understand critical determinants that mediate OHC death caused by HP β CD treatment. We identified prestin, an OHC-specific motor protein, as an important factor that influences OHC fate in response to HP β CD. Using an *in vitro* system, we determined that prestin is capable of binding to cholesterol, which implies that cholesterol depletion by HP β CD may interfere with this interaction. Consistent with this idea, application of HP β CD on isolated OHCs or OCs resulted in rapid cell shrinking and occasional rupture, indicating that the membrane is compromised. Interestingly, sense organs from prestin-KO mice resisted the same HP β CD treatment. Taken together, our results underscore the potential contribution of prestin to the toxic effects of cholesterol depletion, which needs to be considered when employing combinatorial therapeutic strategies using HP β CD in NPC1 patients.

Results

Prestin-dependent susceptibility of OHCs to HP β CD treatment. Since OHCs were the only cells lost after HP β CD treatment¹⁰, and since cholesterol manipulation modulates the function of the OHC-specific protein, prestin²¹, we reasoned that prestin may be involved in HP β CD-induced OHC loss. WT and prestin-KO littermates²⁸ were, therefore, treated in parallel with the high dose of HP β CD (8000 mg/kg) previously shown to cause hearing loss¹⁰. We confirmed that HP β CD-treated WT cochleae examined 7 days post treatment exhibited massive OHC loss (Fig. 1a). Interestingly, HP β CD treatment of prestin-KO mice resulted in a similar loss of OHCs in the apical region but OHCs in the mid-to-basal regions were largely preserved (Fig. 1b,c). Inner hair cells (IHCs) and other supporting cell types in the OC were unaffected by the treatment in all the animals tested, confirming that the toxic effect of HP β CD is limited to OHCs as previously reported¹⁰ (Supplemental Fig. 1). Representative images in Fig. 1d,e highlight the differential toxicity of HP β CD between WT and prestin-KO mice, which is independent of genetic background. Similar patterns of OHC loss/preservation were observed in both FVB and 129/B6 strains (WT n = 10 and KO n = 8). Closer examination of HP β CD-treated OCs from WT animals revealed condensed nuclear staining and fragmented membrane staining in WT OHCs as early as at 8 hours post injection (Fig. 1f,g). Some OHC loss was also evident in prestin-KO cochleae at this time, indicating that the action of HP β CD is rather fast (Fig. 1f,g).

We also measured cochlear function before and 7–8 days post treatment. As expected, both distortion product otoacoustic emissions (DPOAE) and auditory brain stem responses (ABR) were significantly impaired by HP β CD treatment in WT mice. *In vivo* physiological measurements showed loss of DPOAEs for equal level primaries at 70 dB SPL at all f₂ frequencies (Fig. 2a) and increased ABR thresholds at 32 kHz (Fig. 2b) on the order of 40–50 dB. This change in phenotype is consistent with loss of OHC function. Anatomical examination of the HP β CD-treated WT mice showed massive OHC loss, but other cell types including IHCs and supporting cells remained intact (Fig. 1 and Supplemental Fig. 1). Because untreated prestin-KO mice lack OHC electromotility and show large reductions in neural responses^{28,29}, HP β CD treatment had a minimal effect on DPOAEs and ABRs in mice lacking prestin (Fig. 2a,b) due to the loss of cochlear amplification. Only in one prestin-KO were DPOAEs measured at 70 dB and these responses for low f₂ frequencies were lost after treatment. The observation that WT mice after HP β CD injection exhibited ABR thresholds similar to prestin KO before treatment is consistent with the anatomical data showing preservation of IHCs and supporting cells in WT controls following cholesterol manipulation. If IHCs and/or spiral ganglion neurons had also been severely affected, a further loss of sensitivity would have been anticipated. Taken together, the data suggest that prestin is one of the mediators of OHC loss caused by HP β CD treatment.

Prestin-dependent distribution of cholesterol in the OHC membrane. β -cyclodextrins are known to extract cholesterol from the plasma membrane^{30,31}. Since OHCs from prestin-KO animals tolerated HP β CD treatment (Fig. 1), we wondered whether cholesterol distribution differed between OHCs with or without prestin. The cholesterol content of the OHC's lateral membrane (LM) is low based on filipin staining, a polyene antifungal that binds to a 3 β -hydroxyl group of cholesterol^{4,20,21,32}. Because of its fluorescent nature, filipin is commonly used to detect cholesterol. However, it is not very stable and photobleaches rapidly. In order to reevaluate the cholesterol distribution in the inner ear with and without prestin, we utilized a cholesterol-binding small molecule, theonellamide (TNM). TNM was originally isolated from a marine sponge, and has been reported to bind in a specific manner^{33,34} to the same 3 β -hydroxyl group of cholesterol as does filipin. Staining patterns in WT mice using fluorescein-conjugated TNM (TNM-FL)³⁵ were consistent with previous observations using filipin: high levels of staining are seen at the apical and basal regions of each OHC, while the lateral walls where prestin resides are not stained regardless of the position of OHCs within the cochlea (Fig. 3a,b). Although OHCs in prestin-KOs are ~40% shorter than WT^{28,36,37}, the TNM-FL staining revealed that cholesterol was present in the LM as well as in apical and basal regions (Fig. 3c). This cholesterol-staining pattern in mice lacking prestin is evident in the apical half of cochlea, but not in the base probably because the cells become short, which reduces the LM dramatically. In contrast to WT OHCs, other polarized cells in the OC, such as IHCs and supporting cells, are also evenly stained by TNM-FL regardless of position (Supplemental Figs 1 and 2). No noticeable reduction of TNM-FL staining was observed 7 days post treatment independent of whether prestin was expressed or not¹⁰ (Supplemental Fig. 2).

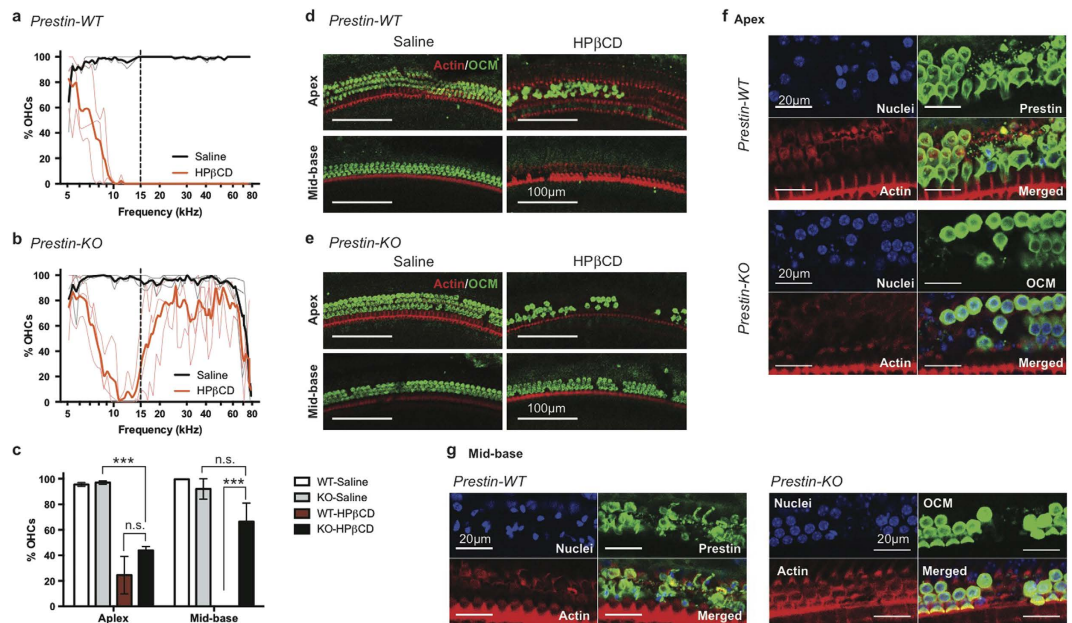


Figure 1. OHC loss in WT exceeds that in prestin-KO mice after HP β CD treatment. (a,b) WT and prestin-KO mice from a het x het breeder pair on the FVB background were treated with either saline or 8000 mg/kg HP β CD at P20–21. OHC survival was determined 7 days post injection. Thin lines represent the results from individual animals while thick lines are the average of each treatment (WT saline, $n = 2$; WT HP β CD $n = 3$; KO saline, $n = 3$; HP β CD, $n = 3$). OHC loss in the mid-to-basal region is observed in all WT cochleae, while OHCs were better preserved in KO cochleae. The dashed line indicates the boundary between apex and mid-base used in (c–e). (c) OHC survival is significant in mid-to-basal regions of HP β CD-treated prestin-KO cochlea. Mean \pm SD are plotted, and significance determined using one-way ANOVA with Tukey's post analysis. n.s., not significant; $***p \leq 0.001$. (d,e) Representative images of saline or HP β CD-treated cochleae from WT (d) and prestin-KO (e) animals at apex and mid-base. Anti-oncomodulin (OCM) antibody was used to stain OHCs, and phalloidin-Alexa 546 for actin. Scale bars, 100 μ m. (f,g) WT mice on the FVB background were treated with 8000 mg/kg HP β CD at P21 for 8 hours, and their cochleae harvested for immunofluorescence. The whole mount OC sections were stained with anti-prestin (WT) or anti-oncomodulin (KO) antibodies, Phalloidin-Alexa 546, and Hoechst 33342 for OHCs, actin, and nuclei, respectively. (f) Representative images of HP β CD-treated cochleae from WT (top panels) and prestin-KO (bottom panels) at the apex. Early events of OHC loss were observed for both WT and KO. For WT, fragmented OHCs were seen (judged by smooth vs. punctate prestin staining). For prestin-KO, absence of OCM staining indicates OHC loss. (g) Representative images of HP β CD-treated cochleae from prestin-WT and KO at the mid-base region of the cochlea. No intact OHCs were present in WT (left panels), although condensed nuclei indicating dying cells were observed. OHCs are largely intact in KO mice (right panels). Scale bars, 20 μ m.

Thus, OHCs that express prestin have an uneven cholesterol distribution, which appears to be absent in OHCs that lack prestin and in other cell types in the OC, suggesting a unique relationship between prestin and cholesterol.

Interaction of prestin and cholesterol. Prestin is essential for OHC electromotility, structural integrity, and survival^{15,28,37,38}. Previous studies have described a variety of cholesterol effects on prestin regulation, including its membrane targeting, oligomerization, and lipid-raft association^{21,39,40}, as well as its voltage-dependent motor function^{20,41}. These effects can be attributed to changes in physical properties of the biological membrane and/or to direct functional modulation through specific binding⁴¹. Although OHCs are highly susceptible to HP β CD, filipin and TMN did not stain the prestin-containing LM of OHCs. This observation raises the possibility that filipin and TMN may not access cholesterol when it is already in a complex with prestin and/or other proteins in the LM. In fact, it has been reported that some cholesterol-containing membranes are not labeled by filipin^{42–44}. Therefore, we tested whether prestin can directly and specifically interact with cholesterol *in vitro*. Using cholesterol-coupled affinity beads^{45,46}, we performed a pull-down assay with YFP-tagged prestin heterologously expressed in a stable HEK cell line⁴⁷. Although a trace amount of prestin protein was pulled down by cholesterol-conjugated beads, the majority of prestin molecules did not bind to the cholesterol beads (Supplementary Fig. 3). We reasoned that prestin may have already been in a complex with cholesterol in the stable HEK cell line, making it difficult to interact with the cholesterol beads.

In order to better observe an association between cholesterol and prestin, we turned to an Sf9 insect cell line with known low-cholesterol content (10–20 times less) compared to mammalian cells^{30,48}, and established a stable cell line that expresses GFP-tagged WT-prestin. The resulting sf9-prestin-GFP cells express prestin-GFP at the plasma membrane (Fig. 4a). Consistent with the presence of functional prestin molecules at this location,

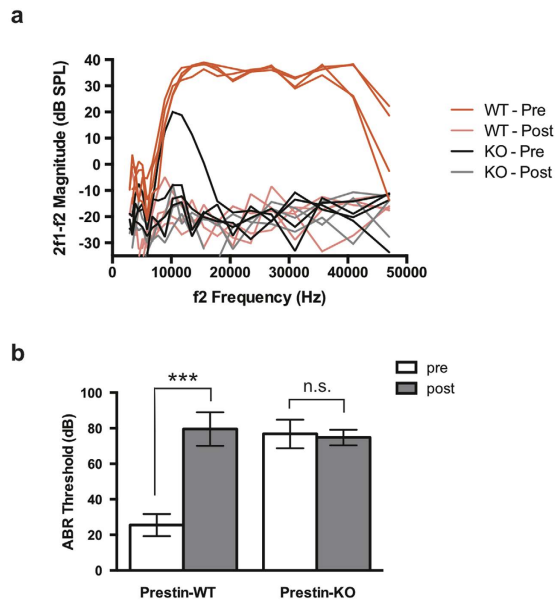


Figure 2. *In vivo* physiology of HP β CD-treated WT- and prestin-KO mice. (a) Distortion product otoacoustic emissions (DPOAEs) for WT and prestin-KO mice ($n = 4$ each) on the FVB background were recorded for $L1 = L2 = 70$ dB SPL before (“Pre”) and 7 days after (“Post”) 8000 mg/kg HP β CD treatment as in Fig. 1. HP β CD treatment abolishes DPOAEs in WT mice (faint red traces). Because prestin-KO mice (black traces) already have reduced emissions (Liberman *et al.*, 2002), HP β CD did not affect DPOAEs in these mice as dramatically as in controls. (b) Auditory brainstem responses (ABR) from the same WT and prestin-KO mice as in (a) were determined using a 32 kHz tone burst before (“Pre”) and after (“Post”) HP β CD treatment. HP β CD treatment significantly increased the ABR threshold in WT mice. Prestin-KO mice already have a large threshold shift (Liberman *et al.*, 2002) so that HP β CD did not affect ABR thresholds in these mice. Mean \pm SD are plotted; significance was determined using an unpaired t-test. n.s., not significant; *** $p \leq 0.0001$.

Sf9-prestin-GFP cells exhibit nonlinear capacitance (NLC), a signature of prestin’s motor activity^{49,50}. The NLC of Sf9-prestin-GFP cells responded to cholesterol loading and depletion in qualitatively the same manner as previously reported for isolated OHCs and prestin-expressing HEK293 cells^{21,22} (Fig. 4b–e). V_{pkcm} is a parameter that describes the optimal voltage operating point of prestin while α represents prestin’s voltage sensitivity. Significant hyperpolarization of V_{pkcm} and reduction in α were observed under the cholesterol loading condition, suggesting that cholesterol affects the voltage operating point and sensitivity of prestin, respectively (Fig. 4c,d). Because of the low cholesterol content in Sf9 cells compared to other mammalian cell types, depolarization in V_{pkcm} in response to cholesterol depletion was minimal as expected (Fig. 4b,c). Similarly, cholesterol loading resulted in aggregation of prestin in Sf9-prestin-WT cells as previously described in HEK cells²¹, while cholesterol depletion did not affect the prestin’s distribution (Fig. 4f). Charge density, which correlates the density of the amount of functional prestin molecules at the PM, was not affected by acute cholesterol manipulations (Fig. 4e). Using Sf9-prestin-GFP cells, we also were able to recapitulate prestin’s interaction with cholesterol-beads in the pull-down assay. Prestin-GFP was pulled-down with cholesterol beads but not with unconjugated control beads as shown in Fig. 4g. Band intensities were measured and compared for control vs. cholesterol beads as in lanes 1 and 2, (Student’s t-test, $p = 0.0059$, $n = 5$). Addition of exogenous free cholesterol abolished prestin-GFP binding, indicating that this interaction is specific (Fig. 4g, lane 3). These data suggest a direct interaction of prestin and cholesterol *in vitro*.

OHCs isolated from Prestin-KOs tolerate HP β CD treatment. Because of the close relationship between prestin and cholesterol, depletion of cholesterol may compromise the stability of the prestin-enriched LM, resulting in HP β CD-induced OHC death. In fact, Rajagopalan and colleagues noted “a drastic morphological change in OHCs and even cell death” while treating isolated OHCs with methyl- β -cyclodextrin (M β CD), which has a higher binding affinity to cholesterol than HP β CD^{21,51}. We also observed rapid shortening of isolated WT OHCs and morphological changes in the OC upon addition of 1 mM HP β CD, a concentration commonly used in cell culture media (Fig. 5a and Supplemental Movie 1). At a higher HP β CD concentration (10 mM), we noticed OHC “rupture” in OC explants from WT animals where OHC nuclei seemed to suddenly (within one frame of a 4 sec interval) increase in size and then shrink (Fig. 5b, red asterisks and Supplemental Movie 2). Interestingly, the OHC “rupture” events were not evident in prestin-KO mice during a comparable duration of time-lapse recordings. Although there appeared to be some gradual increase in OHC size over time (in ~ 4 frames in a 4 sec interval, white asterisks), sudden “rupture” as seen in WT OCs was largely absent (Fig. 5c and Supplemental Movie 3). Thus, our *in vitro* observations corroborate the *in vivo* OHC survival data (see Fig. 1), i.e., prestin-KO OHCs tolerate the same HP β CD treatment that damages WT OHCs. These observations suggest that the extraction of cholesterol by HP β CD results in rapid membrane disruption of OHCs in a prestin-dependent manner, leading to cell death.

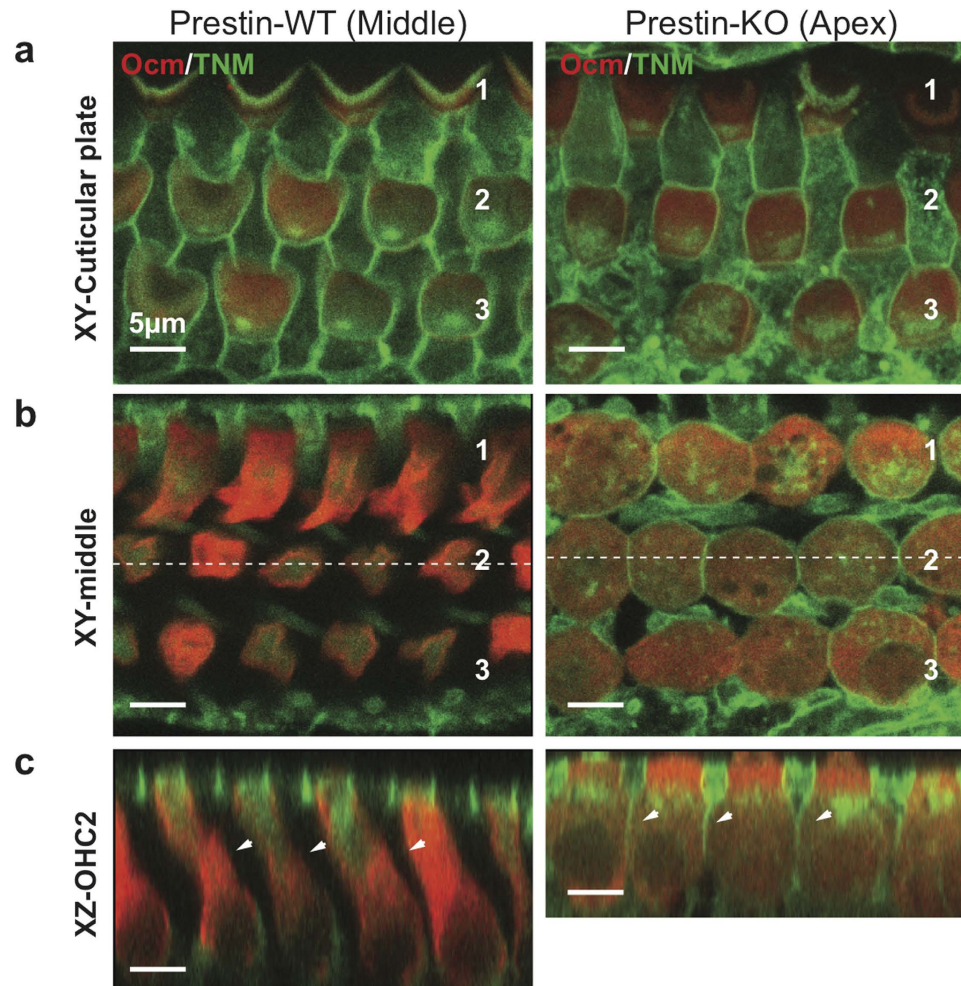


Figure 3. Cholesterol staining of cochleae from WT- and prestin-KO mice. Saline-treated WT- and prestin-KO cochleae (as in Fig. 1) were stained with TNM-fluorescein (TNM-FL) and imaged. **(a)** Single plane image at the cuticular plate (XY view, “Cuticular plate”) and **(b)** along the lateral wall (XY view, “middle”). Both WT and KO cochleae show similar cholesterol staining (green) for all rows of OHCs at the cuticular plate. **(c)** Radial view of the z-stack images. Unlike the KO, staining was not observed on the lateral walls of OHCs from WT cochlea (XZ view, “OHC-2”, white arrowheads). Red, anti-oncomodulin; Green, TNM-FL. Scale bars, 5 μ m.

Discussion

In this study, we identified prestin as a contributor to HP β CD ototoxicity. Single, high-dose administration of HP β CD resulted in massive OHC loss in WT mice whereas OHCs were preserved in prestin-KO mice, indicating that prestin is involved (Fig. 1). Prestin localizes to the LM of OHCs, a specialized domain that undergoes voltage-dependent length and stiffness changes^{16,28,52}. It is also known that the cholesterol content of the OHC’s LM is low when measured using filipin^{20,21,32} or TNM-FL (Fig. 3). Nevertheless, the LM must contain cholesterol as significant functional modulation of prestin can be seen in isolated OHCs using a cholesterol-depleting procedure²¹. Regardless of the abundance of cholesterol in the LM, it is clear that OHCs are sensitive to perturbation by HP β CD, as the toxic effect of HP β CD is rapid and limited to OHCs (Fig. 5a,b, and Supplemental Movies 1 and 2). Although our data show that prestin can interact with cholesterol *in vitro* (Fig. 4g), the identification of cholesterol binding motifs in prestin is required in order to determine whether disruption of the cholesterol-prestin interaction plays a role in OHC death. Yamashita *et al.* recently suggested that the OHC’s trilaminar structure, which consists of PM, actin-spectrin cortical lattice (CL), and the subsurface cisternae (SSC), limits prestin’s mobility⁵³. It is also reported that salicylate, a prestin inhibitor that reversibly alters the SSC⁵⁴, can increase prestin’s mobility in the presence M β CD⁵³. Although the degree to which the OHC’s trilaminar structure depends on prestin is debatable^{53,55}, it remains possible that the CL or SSC contribute to HP β CD-induced ototoxicity. Further investigation is required to fully elucidate how depletion of the cholesterol from the prestin-enriched LM induces cell death. The rapidity of this effect is consistent with a recent report⁵⁶ showing that antioxidants do not protect OHCs against HP β CD toxicity, suggesting that cell death may not involve generation of ROS and apoptotic signaling events.

It is curious that the preservation of OHCs in HP β CD-treated prestin-KO cochleae was not statistically significant in the apical region but was limited to the high-frequency basal region (Fig. 1a,b), where NPC1 patients also

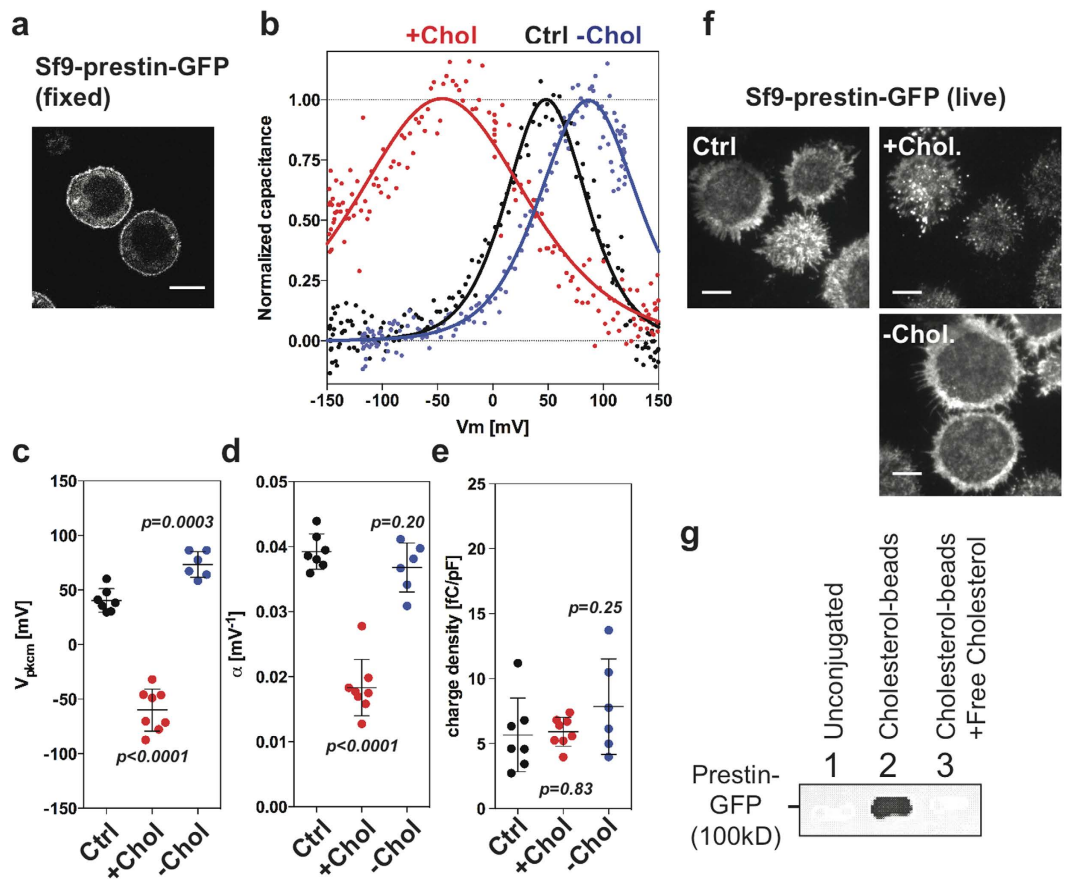


Figure 4. Interaction of prestin and cholesterol. (a) Representative images of Sf9 cells with prestin-GFP localizes at the plasma membrane. Scale bar, 10 μ m. (b–e) Non-linear capacitance (NLC) measurements of stable Sf9-prestin-GFP cells. (b) Whole-cell recordings of Sf9-prestin-GFP cells were performed in control buffer (“Ctrl”), with cholesterol loading (“+Chol”), and with cholesterol depletion (“-Chol”). (c) V_{pkcm}. Mean \pm s.d. are: Ctrl, 40 \pm 11 mV (n = 7); +Chol, -60 \pm 19 mV (n = 8); -Chol, 73 \pm 12 mV (n = 6). P values are as indicated (t-test, compared to Ctrl). (d) α . Mean \pm s.d. are: Ctrl, 0.039 \pm 0.003 mV⁻¹ (n = 7); +Chol, 0.018 \pm 0.004 mV⁻¹ (n = 8); -Chol, 0.037 \pm 0.004 mV⁻¹ (n = 6). P values are as indicated (t-test, compared to Ctrl). (e) Charge density. Mean \pm s.d. are: Ctrl, 5.7 \pm 2.8 fC/pF (n = 7); +Chol, 5.9 \pm 1.1 fC/pF (n = 8); -Chol, 7.9 \pm 3.7 fC/pF (n = 6). P values are as indicated (t-test, compared to Ctrl). (f) Live-cell TIRF imaging of Sf9-prestin-GFP cells with cholesterol manipulation. Sf9-prestin-GFP cells were either grown in control media (“Ctrl”), in media supplemented with 5 mM M β CD (“-Chol”), or 5 mM M β CD saturated with cholesterol (“Chol”) for 1 h and observed under TIRF microscopy. Scale bars, 5 μ m. (g) Cholesterol pull-down assay of Sf9-prestin-GFP cells. Cell lysates containing membrane fractions from stable Sf9-prestin-GFP cells were incubated with unconjugated control beads or cholesterol-conjugated beads, separated on SDS-PAGE, and probed with anti-GFP. Prestin-GFP is pulled-down with cholesterol-conjugated beads but not with unconjugated beads (n = 5, p = 0.0059, t-test). Lanes 1, Unconjugated beads; 2, Cholesterol-conjugated beads; 3, Cholesterol-conjugated beads with addition of exogenous free cholesterol.

experience impairment⁵⁷. This observation indicates that factors in addition to prestin are likely involved, as cholesterol can influence a variety of biological processes by modulating various membrane proteins. Coincidentally, efferent nerve innervation is the highest in the middle region where OHC death occurred in both WT and prestin-KO cochleae⁵⁸, raising the possibility that changes in the functions of additional proteins may underlie HP β CD ototoxicity. Efferent innervation to OHCs is mediated by Ca²⁺ entry through α 9/ α 10-nicotinic receptors, followed by the activation of small-conductance (SK2) and the voltage- and Ca²⁺-activated large conductance potassium (BK) channels⁵⁹. Although the distribution of α 9/ α 10-nicotinic receptors along the length of the cochlea is not clear, SK2 channels and BK channels are not evenly distributed, i.e., high expression is only found in apical and middle cochlear turns⁵⁹. Intriguingly, both nicotinic acetylcholine receptors and BK channels are cholesterol-binding proteins, and their functions are regulated in part by cholesterol². In addition, voltage-gated Ca²⁺ channels (VGCC) and BK channels in chicken hair cells are reported to be sensitive to cholesterol depletion by M β CD⁶⁰, suggesting that increased influx of Ca²⁺ could result in excitotoxicity and cell death. Although it is not clear whether innervation densities or channel distributions are altered in prestin-KO mice, it is possible that these factors contribute to OHC loss in the apical half of prestin-KO cochleae in response to cholesterol extraction by HP β CD.

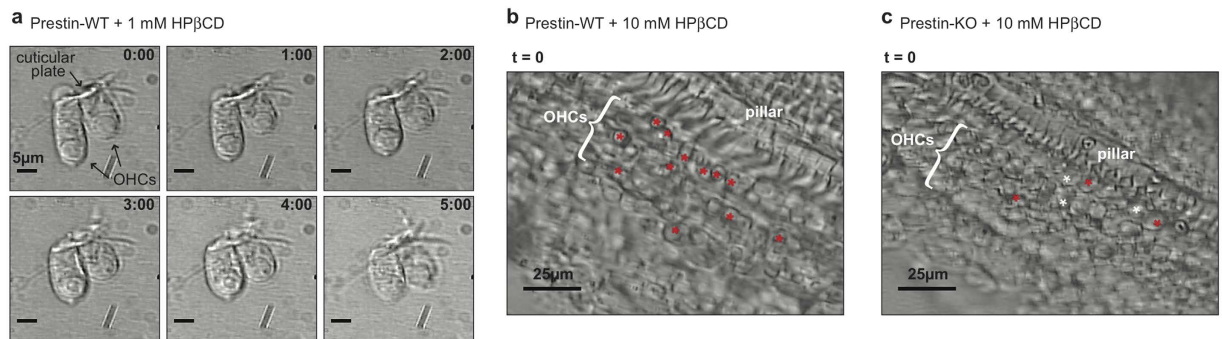


Figure 5. *In vitro* analysis of HP β CD-treated OHCs. **(a)** Time-lapse images of HP β CD-treated WT OHCs. Isolated OHCs from a WT-control mouse were treated with 1 mM HP β CD and observed under microscopy. OHCs rapidly shorten upon addition of HP β CD. Scale bars, 5 μ m. **(b)** HP β CD treatment of an isolated OC from a WT mouse treated with 10 mM HP β CD. The initial image ($t = 0$, before the addition of HP β CD) is shown. Red asterisks (*) indicate cells that ruptured during the duration of time-lapse recording. **(c)** HP β CD treatment of an isolated OC from a prestin-KO mouse treated with 10 mM HP β CD. The initial image ($t = 0$, before the addition of HP β CD) is shown. Red asterisks (*) indicate cells that ruptured during the duration of time-lapse recording; white asterisks are OHCs that seem to have swollen but not ruptured.

HP β CD is the only promising drug for ameliorating the neurodegenerative phenotype in NPC1 patients. It is, therefore, important to elucidate mechanisms of ototoxicity to avoid further hearing impairment in afflicted individuals. Recent attempts in minimizing adverse effects of β -CDs include specific targeting of HP β CD to lysosomes by tethering the cyclodextrins to biocleavable polyrotaxanes (HE-SS-PRX)⁶¹. Although *in vitro* studies show reduced cytotoxicity by preventing β -CDs from targeting the plasma membrane, it is concerning that cellular access of HE-SS-PRX depends on uptake via endocytic pathways. It, therefore, remains to be seen whether HE-SS-PRX can maintain its efficacy without causing toxicity to OHCs *in vivo*. These complications relate to the fact that HP β CD does not cross the blood-brain barrier⁶², with the result that current treatment involves direct administration to CSF. Since OHCs are bathed in perilymph, which is derived from CSF, it may be difficult to avoid damage to OHCs with the current drug-delivering strategies. Additional study is required before we are able to develop improved HP β CD-based therapies to minimize ototoxicity in NPC1 patients.

Methods

Animals. All experimental procedures were conducted in accordance with the Guide for the Care and Use of Laboratory Animals by NIH, and were approved by Northwestern University's Animal Care and Use Committee. Details on the generation and characterization of prestin knockout (KO) mice is described elsewhere²⁸. In order to minimize OHC death in mice lacking prestin³⁸, the prestin KO mice were backcrossed to the FVB strain for 8 generations (N8). This strain is known to have excellent high-frequency hearing well into adulthood⁶³. Prestin wild-type (WT) and KO mice on the FVB background were obtained by Het x Het breeding.

HP β CD treatment and *in vivo* physiology. After weaning WT and prestin-KO mice were injected with 0.9% NaCl or 8000 mg/kg HP β CD dissolved in 0.9% NaCl (Sigma, H107) subcutaneously as described previously¹⁰. Distortion product otoacoustic emissions (DPOAEs) were measured by presenting the two stimulating primaries each at 70 dB SPL and for a frequency ratio of $f_2/f_1 = 1.2$. Auditory brainstem responses (ABR) were also collected to document the output of the cochlea, as well as subsequent neural processing in the brainstem. For these recordings, subcutaneous electrodes were inserted at the vertex and the mastoid with each response measured relative to the indifferent electrode inserted at the opposite shoulder/neck region. Calibration was performed quasi-free field as reported previously⁶⁴. Thresholds were determined by noting the signal level where the ABR waveform disappeared into the noise. Because the number of averages increased as signal level decreased (5 dB step size), the noise level was ~ 0.2 microvolts. Further details on how these recordings are made appear in a previous publication⁶⁵.

Tissue processing and immunostaining. Mice were cardiac perfused with 4% paraformaldehyde and cochleae extracted at 7 days post treatment unless otherwise noted. After post-fixation and decalcification, cochleae were dissected following the Eaton-Peabody Laboratory cochlear dissection protocol⁶⁶. For immunostaining, anti-prestin⁶⁷ and anti-oncomodulin (Santa Cruz) antibodies were used. Secondary antibodies include goat anti-rabbit Alexa Fluor 488 and donkey anti-goat Alexa Fluor 488 (Molecular Probes). For cholesterol staining, cochlear sections were incubated with 1 μ M TNM-FL³³ for 3 days at 4 $^{\circ}$ C without permeabilization. Stained cochlear sections were mounted onto slides using Dako fluorescent mounting medium (DAKO).

Imaging and anatomical measurements. Images were captured on a Nikon C2+ or A1R confocal microscope with Plan Fluor 10X and Plan Apo 20X objectives (Nikon) controlled by NIS Element software. For TNM imaging, a Plan Apo 60X oil objective (Nikon) was used. Z-stack images were taken with 0.4 μ m intervals and 3D images reconstructed using NIS Element software. Basilar membrane length was measured using ImageJ, and the numbers of remaining OHCs determined. A mouse cochlear place-frequency map⁶⁸ was used to

determine the corresponding frequencies. An Andor XDI Revolution microscope with Apo TIRF 100X oil objective (Nikon) was used for TIRF imaging.

Plasmids. To generate pIZ-gPres-ceGFP, WT gerbil prestin (gPrestin) with C-terminal EGFP tag was amplified from gPrestin-GFP⁶⁹, and cloned into a pIZ/V5-His vector (Invitrogen) using SpeI and XhoI.

Cell Line and cell culture. Sf9 cells (Invitrogen) were maintained in Sf-900 III SFM supplemented with 5% fetal bovine serum (Gibco) and 1X antibiotic antimycotic solution (Sigma). To generate stable Sf9 cells with WT gPrestin, Sf9 cells were transfected with pIZ-gPres-ceGFP using Effectene (Qiagen), and selected with 1 µg/µl zeocin (Invitrogen). A single clone was chosen to establish the stable cell line. The tetracycline-inducible WT-gPrestin stable HEK293 cell line (293-TRxST-gPrestin-YFP4TOmycHisC) was a generous gift from Drs. Santo-Sacchi and Navaratnam. Growth conditions and induction of the cell line were defined previously⁴⁷. For transient transfections of Sf9 and HEK293T cells with prestin constructs, Effectene (Qiagen) and jetPRIME (Polyplus) were used according to the manufacturer's instructions.

Nonlinear capacitance (NLC) measurements. Whole-cell recordings were performed at room temperature using the Axopatch 200 A amplifier (Molecular Devices, CA). Recording pipettes were pulled from borosilicate glass to achieve initial bath resistances averaging ~3 MΩ. Intracellular pressure was kept at 0 mmHg during recording. Recording pipettes were filled with an intracellular solution containing (mM): 140 CsCl, 2 MgCl₂, 10 EGTA, and 10 HEPES (pH 7.3). Cells were bathed in an extracellular solution containing (mM): 120 NaCl, 20 TEA-Cl, 2 CoCl₂, 2 MgCl₂, 10 HEPES (pH 7.3). Osmolarity was adjusted to 310 mmol/kg with glucose. NLC was measured using a sinusoidal voltage stimulus (2.5-Hz, 120 or 150 mV amplitude) superimposed with two higher frequency stimuli (391 and 781 Hz, 10 mV amplitude)⁷⁰. Data were collected by jClamp (SciSoft Company, New Haven, CT), and NLC determined as described previously⁷⁰. For cholesterol loading and depletion, 5 mM MβCD was used with or without a saturating amount of cholesterol.

Voltage-dependent cell membrane electric capacitance data were analyzed using the following two-state Boltzmann equation:

$$C_m = \frac{\alpha Q_{\max} \exp[\alpha (V_m - V_{pkcm})]}{\{1 + \exp[\alpha (V_m - V_{pkcm})]\}^2} + C_{lin} \quad (1)$$

where α is the slope factor of the voltage-dependence of charge transfer, Q_{\max} is the maximum charge transfer, V_m is the membrane potential, V_{pkcm} is the voltage at which the maximum charge movement is attained, and C_{lin} is the linear capacitance⁷⁰.

Preparation of Sf9 cell lysates. Sf9 cells stably expressing WT-gPrestin were collected and washed once in PBS. Cell pellets were first resuspended in wash buffer (50 mM Tris-Cl buffer (pH 7.4), 1X protease inhibitor cocktail (Sigma, P8849) and 1 mM PMSF (Sigma, P7626)), and incubated on ice for 30 min. Cells were then homogenized, and spun down at 700 g for 10 min at 4 °C. Supernatants were then transferred to a fresh tube, and spun down at 10,000 g for 30 min at 4 °C. The total membrane fraction of Sf9 cells (pellets) were dissolved in extraction buffer (50 mM Tris-Cl, pH 7.4, 50 mM NaCl, 25 mM n-dodecyl β-d-maltoside (DDM), 1 mM EGTA, 1X protease inhibitor cocktail, and 1 mM PMSF) at room temperature for 1 h, and centrifuged at 16,000 g for 30 min at room temperature. Supernatants containing gPrestin-GFP were used for the cholesterol binding assay.

Cholesterol binding assay. Preparation of cholesterol beads was based on a previous report^{45,46} and the manufacturer's instructions. CarboxyLink coupling gel (Thermo Scientific) was washed in 30% 1,4-dioxane (Fisher) and then in 100% dioxane. Cholesteryl hemisuccinate (Sigma, C6512) was dissolved in 100% dioxane, and immobilized on a pre-washed CarboxyLink coupling gel in the presence of N,N'-dicyclohexylcarbodiimide (DCC; Thermo Scientific, 20320) at room temperature for 4 hours. The cholesterol-beads were then washed twice each in 100% dioxane, 30% dioxane, and then stored in PBS. At the same time, pre-washed CarboxyLink coupling gel was processed without cholesteryl hemisuccinate to serve as a control for non-specific binding. Cholesterol-beads or unconjugated control beads were mixed with cell lysates containing membrane fractions isolated from stable Sf9 cells (described above) in the presence or absence of 1 mM cholesterol, and incubated for 1 h at room temperature. The reaction mix was then centrifuged and washed 5 times with 50 mM Tris, and eluted with 2X Laemmli Sample Buffer (BioRad) at room temperature for 30 min. Eluates were analyzed by Western blotting.

Western blotting. For detection of gPrestin expressed in Sf9 cells, samples were separated on 4–20% gradient Mini-Protein precast gels (BioRad), transferred to 0.45 µm nitrocellulose membranes (BioRad) and probed with 1:5000 dilutions of anti-V5 antibodies (Invitrogen) followed by 1:5000 dilutions of goat anti-mouse-HRP antibodies (Jackson Laboratory). For detection of gPrestin expressed in HEK293T cells, anti-GFP (Rockland) and anti-chicken-HRP (Jackson Laboratory) antibodies were used.

References

1. Janmey, P. A. & Kinnunen, P. K. J. Biophysical properties of lipids and dynamic membranes. *Trends Cell Biol.* **16**, 538–546, doi: 10.1016/j.tcb.2006.08.009 (2006).
2. Levitan, I., Singh, D. K. & Rosenhouse-Dantsker, A. Cholesterol binding to ion channels. *Front. Physiol.* **5**, doi: 10.3389/fphys.2014.00065 (2014).
3. Simons, K. & Toomre, D. Lipid rafts and signal transduction. *Nat. Rev. Mol. Cell Biol.* **1**, 31–39, doi: 10.1038/35036052 (2000).

4. Gimpl, G. Cholesterol-protein interaction: methods and cholesterol reporter molecules. In *Cholesterol Binding and Cholesterol Transport Proteins*. Vol. 51, (ed. J. R. Harris) 1–45 (Springer Netherlands, 2010).
5. Lofsson, T. & Duchene, D. Cyclodextrins and their pharmaceutical applications. *Int. J. Pharm.* **329**, 1–11, doi: 10.1016/j.ijpharm.2006.10.044 (2007).
6. Abi-Mosleh, L., Infante, R. E., Radhakrishnan, A., Goldstein, J. L. & Brown, M. S. Cyclodextrin overcomes deficient lysosome-to-endoplasmic reticulum transport of cholesterol in Niemann-Pick type C cells. *Proc. Natl. Acad. Sci. USA* **106**, 19316–19321, doi: 10.1073/pnas.0910916106 (2009).
7. Vance, J. E. Lipid imbalance in the neurological disorder, Niemann-Pick C disease. *FEBS Lett.* **580**, 5518–5524, doi: 10.1016/j.febslet.2006.06.008 (2006).
8. Aqul, A. *et al.* Unesterified cholesterol accumulation in late endosomes/lysosomes causes neurodegeneration and is prevented by driving cholesterol export from this compartment. *J. Neurosci.* **31**, 9404–9413, doi: 10.1523/JNEUROSCI.1317-11.2011 (2011).
9. Camargo, F. *et al.* Cyclodextrins in the treatment of a mouse model of Niemann-Pick C disease. *Life Sci.* **70**, 131–142 (2001).
10. Crumling, M. A. *et al.* Hearing loss and hair cell death in mice given the cholesterol-chelating agent hydroxypropyl- β -cyclodextrin. *PLoS One* **7**, e53280, doi: 10.1371/journal.pone.0053280 (2012).
11. King, K. *et al.* HP β CD therapy in humans with NPC1 disease: Audiological Outcomes. *38th meeting of the Association for Research in Otolaryngology*, 297, Baltimore, MD (2015).
12. King, K. A. *et al.* Auditory phenotype of Niemann-Pick disease, type C1. *Ear Hear.* **35**, 110–117, doi: 10.1097/AUD.0b013e3182a362b8 (2014).
13. Cronin, S., Lin, A., Thompson, K., Hoenerhoff, M. & Duncan, R. K. Hearing Loss and Otopathology Following Systemic and Intracerebroventricular Delivery of 2-Hydroxypropyl-Beta-Cyclodextrin. *J Assoc Res Otolaryngol* **16**, 599–611, doi: 10.1007/s10162-015-0528-6 (2015).
14. Ashmore, J. Cochlear outer hair cell motility. *Physiol. Rev.* **88**, 173–210, doi: 10.1152/physrev.00044.2006 (2008).
15. Dallos, P. *et al.* Prestin-based outer hair cell motility is necessary for mammalian cochlear amplification. *Neuron* **58**, 333–339, doi: 10.1016/j.neuron.2008.02.028 (2008).
16. Zheng, J. *et al.* Prestin is the motor protein of cochlear outer hair cells. *Nature* **405**, 149–155, doi: 10.1038/35012009 (2000).
17. Alper, S. L. & Sharma, A. K. The SLC26 gene family of anion transporters and channels. *Mol. Aspects Med.* **34**, 494–515, doi: 10.1016/j.mam.2012.07.009 (2013).
18. Hallworth, R. & Nichols, M. G. Prestin in HEK cells is an obligate tetramer. *J. Neurophysiol.* **107**, 5–11, doi: 10.1152/jn.00728.2011 (2012).
19. Zheng, J. *et al.* Analysis of the oligomeric structure of the motor protein prestin. *J. Biol. Chem.* **281**, 19916–19924, doi: 10.1074/jbc.M513854200 (2006).
20. Brownell, W. E., Jacob, S., Hakizimana, P., Ulfendahl, M. & Fridberger, A. Membrane cholesterol modulates cochlear electromechanics. *Pflugers Arch.* **461**, 677–686, doi: 10.1007/s00424-011-0942-5 (2011).
21. Rajagopalan, L. *et al.* Tuning of the outer hair cell motor by membrane cholesterol. *J. Biol. Chem.* **282**, 36659–36670, doi: 10.1074/jbc.M705078200 (2007).
22. Sfoudouris, J., Rajagopalan, L., Pereira, F. A. & Brownell, W. E. Membrane composition modulates prestin-associated charge movement. *J. Biol. Chem.* **283**, 22473–22481, doi: 10.1074/jbc.M803722200 (2008).
23. Fang, J., Izumi, C. & Iwasa, K. H. Sensitivity of prestin-based membrane motor to membrane thickness. *Biophys. J.* **98**, 2831–2838, doi: 10.1016/j.bpj.2010.03.034 (2010).
24. Iwasa, K. H. Effect of stress on the membrane capacitance of the auditory outer hair cell. *Biophys. J.* **65**, 492–498, doi: 10.1016/S0006-3495(93)81053-1 (1993).
25. Kakehata, S. & Santos-Sacchi, J. Membrane tension directly shifts voltage dependence of outer hair cell motility and associated gating charge. *Biophys. J.* **68**, 2190–2197, doi: 10.1016/S0006-3495(95)80401-7 (1995).
26. Santos-Sacchi, J. & Huang, G. Temperature dependence of outer hair cell nonlinear capacitance. *Hear. Res.* **116**, 99–106 (1998).
27. Nilsen, N., Brownell, W. E., Sun, S. X. & Spector, A. A. Effect of membrane mechanics on charge transfer by the membrane protein prestin. *Biomech Model Mechanobiol* **11**, 107–118, doi: 10.1007/s10237-011-0296-0 (2012).
28. Liberman, M. C. *et al.* Prestin is required for electromotility of the outer hair cell and for the cochlear amplifier. *Nature* **419**, 300–304, doi: 10.1038/nature01059 (2002).
29. Cheatham, M. A., Huynh, K. H., Gao, J., Zuo, J. & Dallos, P. Cochlear function in Prestin knockout mice. *J. Physiol.* **560**, 821–830, doi: 10.1113/jphysiol.2004.069559 (2004).
30. Gimpl, G., Klein, U., Reiländer, H. & Fahrenholz, F. Expression of the human oxytocin receptor in baculovirus-infected insect cells: high-affinity binding is induced by a cholesterol-cyclodextrin complex. *Biochemistry* **34**, 13794–13801 (1995).
31. Kilsdonk, E. P. *et al.* Cellular cholesterol efflux mediated by cyclodextrins. *J. Biol. Chem.* **270**, 17250–17256 (1995).
32. Nguyen, T. V. & Brownell, W. E. Contribution of membrane cholesterol to outer hair cell lateral wall stiffness. *Otolaryngol. Head Neck Surg.* **119**, 14–20 (1998).
33. Nishimura, S. *et al.* Marine antifungal theonellamides target β β -hydroxysterol to activate Rho1 signaling. *Nat. Chem. Biol.* **6**, 519–526, doi: 10.1038/nchembio.387 (2010).
34. Espiritu, R. A. *et al.* Interaction between the Marine Sponge Cyclic Peptide Theonellamide A and Sterols in Lipid Bilayers As Viewed by Surface Plasmon Resonance and Solid-State 2H Nuclear Magnetic Resonance. *Biochemistry* **52**, 2410–2418, doi: 10.1021/bi4000854 (2013).
35. Nishimura, S. *et al.* Visualization of Sterol-Rich Membrane Domains with Fluorescently-Labeled Theonellamides. *PLoS One* **8**, e83716, doi: 10.1371/journal.pone.0083716 (2013).
36. Cheatham, M. A. *et al.* Evaluation of an independent prestin mouse model derived from the 129S1 strain. *Audiology & neuro-otology* **12**, 378–390, doi: 10.1159/000106481 (2007).
37. Cheatham, M. A. *et al.* Prestin-Dependence of Outer Hair Cell Survival and Partial Rescue of Outer Hair Cell Loss in PrestinV499G/Y501H Knockin Mice. *PLoS One* **10**, e0145428, doi: 10.1371/journal.pone.0145428 (2015).
38. Wu, X., Gao, J., Guo, Y. & Zuo, J. Hearing threshold elevation precedes hair-cell loss in prestin knockout mice. *Brain research. Molecular brain research* **126**, 30–37, doi: 10.1016/j.molbrainres.2004.03.020 (2004).
39. Rajagopalan, L. *et al.* Glycosylation regulates prestin cellular activity. *J. Assoc. Res. Otolaryngol.* **11**, 39–51, doi: 10.1007/s10162-009-0196-5 (2010).
40. Sturm, A. K., Rajagopalan, L., Yoo, D., Brownell, W. E. & Pereira, F. A. Functional expression and microdomain localization of prestin in cultured cells. *Otolaryngol. Head Neck Surg.* **136**, 434–439, doi: 10.1016/j.otohns.2006.10.030 (2007).
41. Canis, M. *et al.* The influence of cholesterol on the motility of cochlear outer hair cells and the motor protein prestin. *Acta Otolaryngol.* **129**, 929–934, doi: 10.1080/00016480802495438 (2009).
42. Pelletier, R. M. & Vitale, M. L. Filipin vs enzymatic localization of cholesterol in guinea pig, mink, and mallard duck testicular cells. *J. Histochem. Cytochem.* **42**, 1539–1554, doi: 10.1177/42.12.7983355 (1994).
43. Severs, N. J. & Simons, H. L. Failure of filipin to detect cholesterol-rich domains in smooth muscle plasma membrane. *Nature* **303**, 637–638 (1983).
44. Steer, C. J., Bisher, M., Blumenthal, R. & Steven, A. C. Detection of membrane cholesterol by filipin in isolated rat liver coated vesicles is dependent upon removal of the clathrin coat. *J. Cell Biol.* **99**, 315–319, doi: 10.1083/jcb.99.1.315 (1984).

45. Wichman, A. Affinity chromatography of human plasma low- and high-density lipoproteins. Elution by selective cleavage of a bond in the spacer. *The Biochemical Journal* **181**, 691–698 (1979).
46. Schroeder, C., Heider, H., Moncke-Buchner, E. & Lin, T. I. The influenza virus ion channel and maturation cofactor M2 is a cholesterol-binding protein. *Eur. Biophys. J.* **34**, 52–66, doi: 10.1007/s00249-004-0424-1 (2005).
47. Bian, S., Koo, B. W., Kelleher, S., Santos-Sacchi, J. & Navaratnam, D. S. A highly expressing Tet-inducible cell line recapitulates *in situ* developmental changes in prestin's Boltzmann characteristics and reveals early maturational events. *Am. J. Physiol. Cell Physiol.* **299**, C828–835, doi: 10.1152/ajpcell.00182.2010 (2010).
48. Marheineke, K., Grünwald, S., Christie, W. & Reiländer, H. Lipid composition of *Spodoptera frugiperda* (Sf9) and *Trichoplusia ni* (Tn) insect cells used for baculovirus infection. *FEBS Lett.* **441**, 49–52 (1998).
49. Ashmore, J. F. Forward and reverse transduction in the mammalian cochlea. *Neurosci. Res. Suppl.* **12**, S39–50 (1990).
50. Santos-Sacchi, J. Reversible inhibition of voltage-dependent outer hair cell motility and capacitance. *J. Neurosci.* **11**, 3096–3110 (1991).
51. Irie, T. & Uekama, K. Pharmaceutical applications of cyclodextrins. III. Toxicological issues and safety evaluation. *J. Pharm. Sci.* **86**, 147–162, doi: 10.1021/js960213f (1997).
52. He, D. Z. Z., Jia, S. & Dallos, P. Prestin and the dynamic stiffness of cochlear outer hair cells. *J. Neurosci.* **23**, 9089–9096 (2003).
53. Yamashita, T. *et al.* Outer Hair Cell Lateral Wall Structure Constrains the Mobility of Plasma Membrane Proteins. *PLoS Genet.* **11**, e1005500, doi: 10.1371/journal.pgen.1005500 (2015).
54. Dieler, R., Shehata-Dieler, W. E. & Brownell, W. E. Concomitant salicylate-induced alterations of outer hair cell subsurface cisternae and electromotility. *J. Neurocytol.* **20**, 637–653 (1991).
55. He, D. Z. *et al.* Changes in plasma membrane structure and electromotile properties in prestin deficient outer hair cells. *Cytoskeleton (Hoboken)* **67**, 43–55, doi: 10.1002/cm.20423 (2010).
56. Kim, Y. H. *et al.* Ototoxicity of 2-hydroxypropyl- β -cyclodextrin (HP β CD) in mice. *38th meeting of the Association for Research in Otolaryngology*, 795, Baltimore, MD (2015).
57. Ottinger, E. A. *et al.* Collaborative development of 2-hydroxypropyl- β -cyclodextrin for the treatment of Niemann-Pick type C1 disease. *Curr. Top. Med. Chem.* **14**, 330–339 (2014).
58. Maison, S. F., Adams, J. C. & Liberman, M. C. Olivocochlear innervation in the mouse: immunocytochemical maps, crossed versus uncrossed contributions, and transmitter colocalization. *J. Comp. Neurol.* **455**, 406–416, doi: 10.1002/cne.10490 (2003).
59. Maison, S. F., Pyott, S. J., Meredith, A. L. & Liberman, M. C. Olivocochlear suppression of outer hair cells *in vivo*: evidence for combined action of BK and SK2 channels throughout the cochlea. *J. Neurophysiol.* **109**, 1525–1534, doi: 10.1152/jn.00924.2012 (2013).
60. Purcell, E. K., Liu, L., Thomas, P. V. & Duncan, R. K. Cholesterol influences voltage-gated calcium channels and BK-type potassium channels in auditory hair cells. *PLoS One* **6**, e26289, doi: 10.1371/journal.pone.0026289 (2011).
61. Tamura, A. & Yui, N. Lysosomal-specific cholesterol reduction by biocleavable polyrotaxanes for ameliorating Niemann-Pick type C disease. *Sci. Rep.* **4**, 4356, doi: 10.1038/srep04356 (2014).
62. Pontikis, C. C., Davidson, C. D., Walkley, S. U., Platt, F. M. & Begley, D. J. Cyclodextrin alleviates neuronal storage of cholesterol in Niemann-Pick C disease without evidence of detectable blood-brain barrier permeability. *J. Inherited Metab. Dis.* **36**, 491–498, doi: 10.1007/s10545-012-9583-x (2013).
63. Zheng, Q. Y., Johnson, K. R. & Erway, L. C. Assessment of hearing in 80 inbred strains of mice by ABR threshold analyses. *Hearing Res.* **130**, 94–107, doi: 10.1016/S0378-5955(99)00003-9 (1999).
64. Pearce, M., Richter, C. P. & Cheatham, M. A. A reconsideration of sound calibration in the mouse. *J. Neurosci. Methods* **106**, 57–67 (2001).
65. Cheatham, M. A. *et al.* Loss of the tectorial membrane protein CEACAM16 enhances spontaneous, stimulus-frequency, and transiently evoked otoacoustic emissions. *J. Neurosci.* **34**, 10325–10338, doi: 10.1523/JNEUROSCI.1256-14.2014 (2014).
66. Liberman, L. D. & Liberman, M. C. Dynamics of cochlear synaptopathy after acoustic overexposure. *J. Assoc. Res. Otolaryngol.* **16**, 205–219, doi: 10.1007/s10162-015-0510-3 (2015).
67. Zheng, J. *et al.* The C-terminus of prestin influences nonlinear capacitance and plasma membrane targeting. *J. Cell Sci.* **118**, 2987–2996, doi: 10.1242/jcs.02431 (2005).
68. Müller, M., von Hünerbein, K., Hoidis, S. & Smolders, J. W. T. A physiological place-frequency map of the cochlea in the CBA/J mouse. *Hearing Res.* **202**, 63–73, doi: 10.1016/j.heares.2004.08.011 (2005).
69. Matsuda, K. *et al.* N-linked glycosylation sites of the motor protein prestin: effects on membrane targeting and electrophysiological function. *J. Neurochem.* **89**, 928–938, doi: 10.1111/j.1471-4159.2004.02377.x (2004).
70. Homma, K. & Dallos, P. Evidence that prestin has at least two voltage-dependent steps. *J. Biol. Chem.* **286**, 2297–2307, doi: 10.1074/jbc.M110.185694 (2011).

Acknowledgements

We thank Drs. Santos-Sacchi and Navaratnam for the stable HEK293T cell line. Imaging was performed at the Northwestern University Center for Advanced Microscopy generously supported by NCI CCSG P30 CA06553 award to the Robert H Lurie Comprehensive Cancer Center. We also thank Dr. Arvanitis and Mr. Mui for assistance in imaging analyses. TIRF Imaging was performed on an Andor XDI Revolution microscope, purchased through the support of NCCR 1S10 RR031680-01. This work was supported by NIH grants DC011813 and RC1DC010633 to J.Z. and DC00089 to M.A.C. and a Hugh Knowles Leadership Fund Award to J.Z. by the Knowles Hearing Center.

Author Contributions

J.Z. initiated the study. S.T., K.H., Y.Z., C.D., J.C., A.A. and J.Z. performed experiments. S.T., K.H., M.A.C. and J.Z. analyzed data. S.N. synthesized TNM reagents. S.T. prepared figures, and S.T. and J.Z. wrote the manuscript with input from all other authors.

Additional Information

Supplementary information accompanies this paper at <http://www.nature.com/srep>

Competing financial interests: The authors declare no competing financial interests.

How to cite this article: Takahashi, S. *et al.* Susceptibility of outer hair cells to cholesterol chelator 2-hydroxypropyl- β -cyclodextrin is prestin-dependent. *Sci. Rep.* **6**, 21973; doi: 10.1038/srep21973 (2016).



This work is licensed under a Creative Commons Attribution 4.0 International License. The images or other third party material in this article are included in the article's Creative Commons license, unless indicated otherwise in the credit line; if the material is not included under the Creative Commons license, users will need to obtain permission from the license holder to reproduce the material. To view a copy of this license, visit <http://creativecommons.org/licenses/by/4.0/>