

A black-and-red stick insect from the Philippines – observations on the external anatomy and natural history of a new species of *Orthomeria*

Davide Vallotto^{1,*}, Joachim Bresseel^{2,*}, Thierry Heitzmann³, Marco Gottardo⁴

1 LCM - Laboratorio di Caratterizzazione Materiali, Department of Philosophy and Cultural Heritage, Ca' Foscari University, Malfanton Marcorà Dorsoduro 3484d, 30123 Venice, Italy **2** Royal Belgian Institute of Natural Sciences, D.O. Phylogeny and Taxonomy, Entomology, Vautier Street 29, B-1000 Brussels, Belgium **3** P.O. Box 2632, Manila CPO, Philippines **4** Department of Life Sciences, University of Siena, Via Aldo Moro 2, 53100 Siena, Italy

Corresponding author: Marco Gottardo (gottardo@unisi.it)

Academic editor: T. Buckley | Received 9 September 2015 | Accepted 23 November 2015 | Published 3 February 2016

<http://zoobank.org/925D7393-0B7B-466D-93A9-C737F1671D82>

Citation: Vallotto D, Bresseel J, Heitzmann T, Gottardo M (2016) A black-and-red stick insect from the Philippines – observations on the external anatomy and natural history of a new species of *Orthomeria*. ZooKeys 559: 35–57. doi: 10.3897/zookeys.559.6281

Abstract

A new stick insect of the genus *Orthomeria* Kirby, 1904 (Phasmatodea, Aschiphsmatidae) is described from the Philippines. *Orthomeria* (*O.*) *kangi* sp. n. is readily distinguished from all other congeners by the distinctive blood red colouration of the costal region of the hind wings. Major features of the external morphology of adults, eggs, and first-instar nymphs are illustrated. Locomotory attachment pads are of the smooth type with irregular microgrooves on the contact surface. An unusual condition of male terminalia is the absence of tergal thorn pads on segment 10. The male clasping organs are represented by an elongated vomer terminating in a prominent spine, and by incurved cerci featuring a bilobed apex equipped with a sharp blade-like ridge. Intraspecific variation in body colouration and hind wing length occurs in females. The new species lives at 400–650 m elevation in the surroundings of the Sablang and Tuba regions, in the Benguet Province of Luzon island. Host plants include *Ficus* spp. (Moraceae), and *Pipturus* spp. and *Leucosyke* spp. (Urticaceae). Observations on the mating and defensive behaviour are presented. *Orthomeria* (*O.*) *catadromus* (Westwood, 1859) is recognised as a junior synonym of *O.* (*O.*) *pandora* (Westwood, 1859), **syn. n.** A lectotype is designated for both species. Finally, an updated identification key to the species of the subgenus *Orthomeria* is provided.

* Both authors contributed equally to this work and are considered co-first authors

Keywords

Insecta, Phasmatodea, Aschiphasmataidae, stick insects, new species, taxonomy, morphology

Introduction

The stick insect genus *Orthomeria* Kirby, 1904 belongs to the South-east Asian family Aschiphasmataidae (Bragg 2001), and includes ten species divided into two subgenera (Bragg 2006). The nominal subgenus *Orthomeria*, characterised by a relatively thickened body with dark brown or black basic colouration, comprises seven species found in Borneo, Seram, Sulawesi, Sumatra, and the Philippines (Bragg 2001). The subgenus *Parorthomeria*, characterised by a slim green body and setose eggs, contains the remaining three species that are endemic to Borneo (Bragg 2006).

As part of our research on the Philippine stick and leaf insect fauna (Gottardo 2007; Gottardo 2008; Hennemann et al. 2009; Bresseel 2012), a field expedition was carried out to the Benguet province of Luzon island during which several specimens of *Orthomeria* were found. After a careful examination of the general anatomy, the specimens were assumed to represent a new species of the subgenus *Orthomeria* showing an original set of morphological traits, including a distinctive red colouration on the wings which was not previously reported within the genus (see Bragg 2001).

The aim of this study is to provide a formal description of the new species. Some features of the external anatomy such as attachment devices and male terminalia are characterised in detail for the first time in *Orthomeria*. The morphological data are integrated with observations on the habitat and various life traits. We also provide an updated identification key to the species of the subgenus *Orthomeria* adapted from Bragg (2001).

Material and methods

Orthomeria specimens were collected at night by searching the vegetation along road sides. Specimens were euthanized in glass jars with fumes of ethyl acetate, and subsequently preserved dried and pinned. Some adult females were kept alive to obtain eggs. Linear body dimensions were taken with digital calipers (to the nearest 0.1 mm). The description of chromatic characters was based on live specimens. Observations on the external morphology were carried out with a Zeiss Stemi DV4 stereo light microscope. Photomicrographs were taken with a Nikon D200 SLR digital camera equipped with Nikon Micro-Nikkor AI-s 105 mm f/2.8 lens or with Nikon 24 mm f/2.8 AI-s lens. For scanning electron microscopy (SEM) observations, samples were dehydrated through a graded ethanol series and dried with CO₂ at the critical point (Balzers CPD 030). Dried samples were mounted on aluminium stubs, sputter coated with gold

(Balzers MED 010), and observed with a Philips XL20 scanning electron microscope operating at an accelerating voltage of 10 kV.

The wing venation nomenclature follows Ren (1997). Terminology of eggshell features follows Clark Sellick (1997).

The following acronyms are used to designate the collections: BMNH - The Natural History Museum, London, United Kingdom; MSNG - Museo Civico di Storia Naturale "Giacomo Doria", Genova, Italy; OC - Private collection Oskar V. Conle, Oberstaufen, Germany; RBINS - Royal Belgian Institute of Natural Sciences, Brussels, Belgium; UMO - University Museum, Hope Entomological Collections, Oxford, United Kingdom; UPLBM - Museum of Natural History, University of the Philippines at Los Banos, Laguna, Philippines.

Results

Orthomeria (Orthomeria) kangii sp. n.

<http://zoobank.org/52E1ED01-9054-4983-BD5A-82B9187EA8B3>

Holotype. 1 ♂, Philippines, Luzon Island, Benguet, Sablang, Barangay Bayabas, 5.VI.2014, leg. T. Heitzmann (MSNG) (Fig. 1).

Paratypes. 1 ♂, 2 ♀♀, and eggs (MSNG); 1 ♂, 1 ♀, and eggs (OC); 1 ♂, 1 ♀, and eggs (RBINS); 1 ♂, 1 ♀, and eggs (UPLBM), same data as for holotype.

Additional material examined. 3 ♂♂, 3 ♀♀, eggs (reared by D. Vallotto 2015; origin, same locality as for holotype; used for macrophotography); 2 ♂♂ (reared by M. Gottardo 2015; origin, same locality as for holotype; used for SEM).

Etymology. This species is named after Albert Kang (Manila) who discovered the first specimens during a photographic trip down the Benguet province of the Philippines.

Diagnosis. A new species of *Orthomeria (Orthomeria)* characterised by (1) relatively small body size, ♂♂ ca. 40 mm in length or shorter, ♀♀ less than 50 mm in length; (2) tegmina blood red; (3) costal area of hind wings with blood red markings; (4) tergum 7 of ♀♀ pale brown with a definite black longitudinal line centrally; (5) relatively short hind wings, only slightly projecting over abdominal tergum 5.

Description of the male. A full set of measurements is presented in Table 1.

Colouration: Body, compound eyes, antennae and legs black. Tegmina red. Costal region of hind wings blood red with a longitudinal black narrow stripe on posterior margin. Anal region of hind wings dark brown (Figs 1, 2A).

Head: In lateral view (Fig. 3), head capsule prognathous, almost as long as the pronotum. Vertex relatively flat. Compound eye large and circular, distinctly protruding hemispherically. Gena narrower than the diameter of the compound eye. Paraglossae not distinctly surpassing the anterior margin of the labrum. In dorsal view (Fig. 4A), head capsule slightly wider than long; dorsal surface with four shallow median depression between the compound eyes. Coronal suture barely recognizable. Ocelli lacking. In ventral view (Fig. 4B), frontal convexity ventrad the antennal base present.

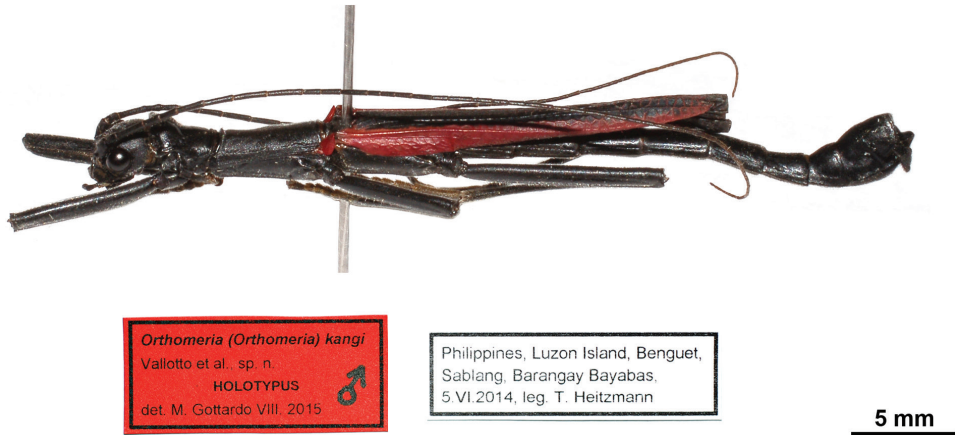


Figure 1. *Orthomeria (Orthomeria) kangi* sp. n. holotype ♂, habitus, lateral view.

Table 1. Morphometric data for the type specimens of *Orthomeria (Orthomeria) kangi* sp. n. from Benguet, Philippines.

Parameter	♂ holotype	♂♂ paratypes	♀♀ paratypes
<i>Measurement (mm)</i>			
Body length	38.8	37.3–40.1	41.8–46.2
Antenna length	38.4	34.3–35.3	38.7–41.0
Head length	3.0	2.8–3.3	3.8–5.5
Pronotum length (PL)	3.6	2.8–3.2	3.9–4.5
Mesonotum length (MOL)	4.9	4.4–4.8	5.7–6.9
Metanotum length (MAL)	2.2	1.9–2.3	2.6–2.8
Median segment length (MSL)	3.7	3.5–4.0	4.1–4.5
Tegmina length	1.3	1.1–1.3	0.9–1.6
Hind wing length	19.0	17.0–18.4	14.9–18.9
Fore femur length	6.9	6.9–7.0	6.8–7.9
Fore tibia length	6.0	6.0–6.1	6.4–7.4
Mid femur length	6.4	5.7–6.0	6.3–6.7
Mid tibia length	5.8	5.4–5.7	6.1–6.7
Hind femur length	9.6	8.6–9.6	8.7–10.1
Hind tibia length	9.4	9.0–9.3	9.4–10.2
Cercus length	1.9	1.9–2.3	1.2–1.4
<i>Morphometric ratios</i>			
MOL divided by PL	1.36	1.50–1.57	1.46–1.53
MAL divided by MOL	0.45	0.43–0.48	0.41–0.46
MSL divided by MAL	1.68	1.74–1.84	1.58–1.61

Labrum notched anteromedially. Median gular sclerite present and small (not shown). Palpomeres of labial and maxillary palps cylindrical. Antenna filiform, slightly shorter than body length (Fig. 2A), consisting of ca. 58 antennomeres; scapus roughly rec-



Figure 2. *Orthomeria (Orthomeria) kangi* sp. n. habitus, dorsal view **A** Adult ♂ **B** Adult ♀.

tangular; pedicellus cylindrical, shorter than scapus (Fig. 4); first flagellomere twice as long as pedicel. Antennifer absent.

Thorax: Prothorax longer than head. Pronotum longer than wide (Fig. 4A); anterior half approximately one-third higher than posterior half (Fig. 3); front margin very moderately concave with narrow elliptical glandular field laterally (Fig. 3); hind margin rather straight. Paranota well-developed. Prothoracic coxopleurite subtriangular;

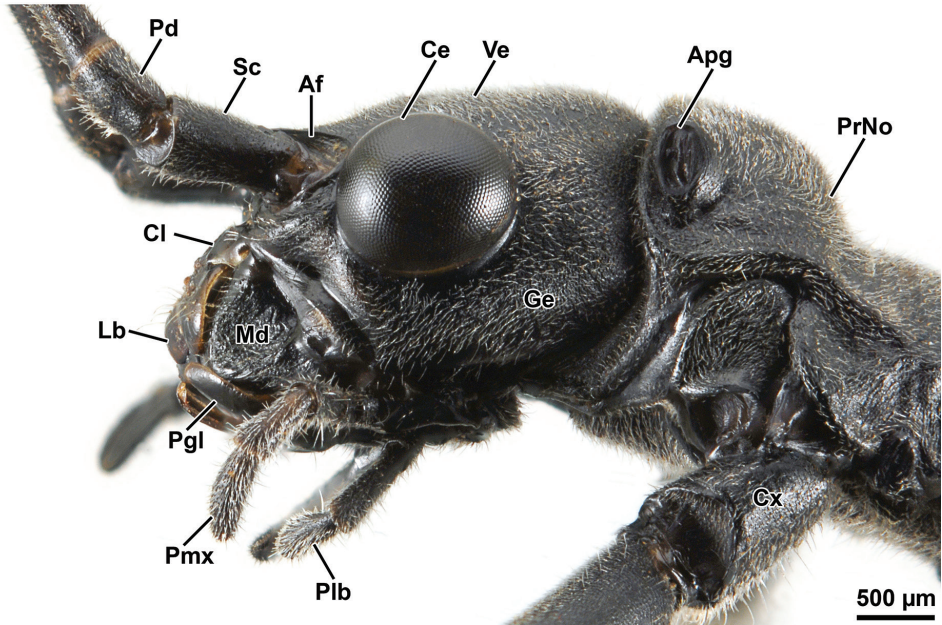


Figure 3. *Orthomeria (Orthomeria) kangii* sp. n. ♂ head and prothorax, lateral view; Apg, aperture of pronotal gland; Af, antennal field; Ce, compound eye; Cl, clypeus; Cx, coxa; Ge, gena; Lb, labrum; Md, mandible; Pd, pedicellus; Pgl, paraglossa; Plb, labial palpus; Pmx, maxillary palpus; PrNo, pronotum; Sc, scapus.

prothoracic basisternum with bell-shaped outline (Fig. 4B). Mesothorax very moderately constricted anteriorly, then slightly widening posteriorly. Mesonotum with concave front and hind margins, about 1.70 times length of pronotum. Basisternum flat; precoxale narrow with subtriangular outline; furcasternum with clearly demarcated furca (Fig. 4B). Metathorax only slightly shorter than mesothorax. Metanotum with globose and strongly setose prescutum (Fig. 5A). Metathoracic pleural and sternal regions as in the mesothorax but shorter.

Wings: Tegmina very small, oval, without shoulder pads (Fig. 5A–B). Hind wing slightly extending beyond the fifth abdominal tergum (Figs 1, 2A). Area between anterior wing margin and posterior Subcosta bent laterally; posterior Subcosta weak, not reaching the wing apex; Radius strongly sclerotized and unbranched, parallel to posterior Subcosta; anterior Media and posterior Media simple and straight; Cubitus + first anterior Analis straight; hind wing fan oval (Fig. 5C).

Legs: Hind leg distinctly projecting beyond the abdomen (Fig. 2A). Coxa unarmed; trochanters small and fused to femora (Fig. 4B). Femora semicircular in cross section with weakly developed carinae. Fore femur straight basally, unarmed (Fig. 2A). Mid femur with 3 minute spines on the ventro-anterior carina. Hind femur with 4–7 small spines on the ventro-anterior carina and about 3 minute spines on the ventro-posterior carina. Tibiae unarmed and circular in cross section, lacking carinae, with V-shaped area apicalis (Fig. 6A). Tarsus more than two-thirds the length of the cor-

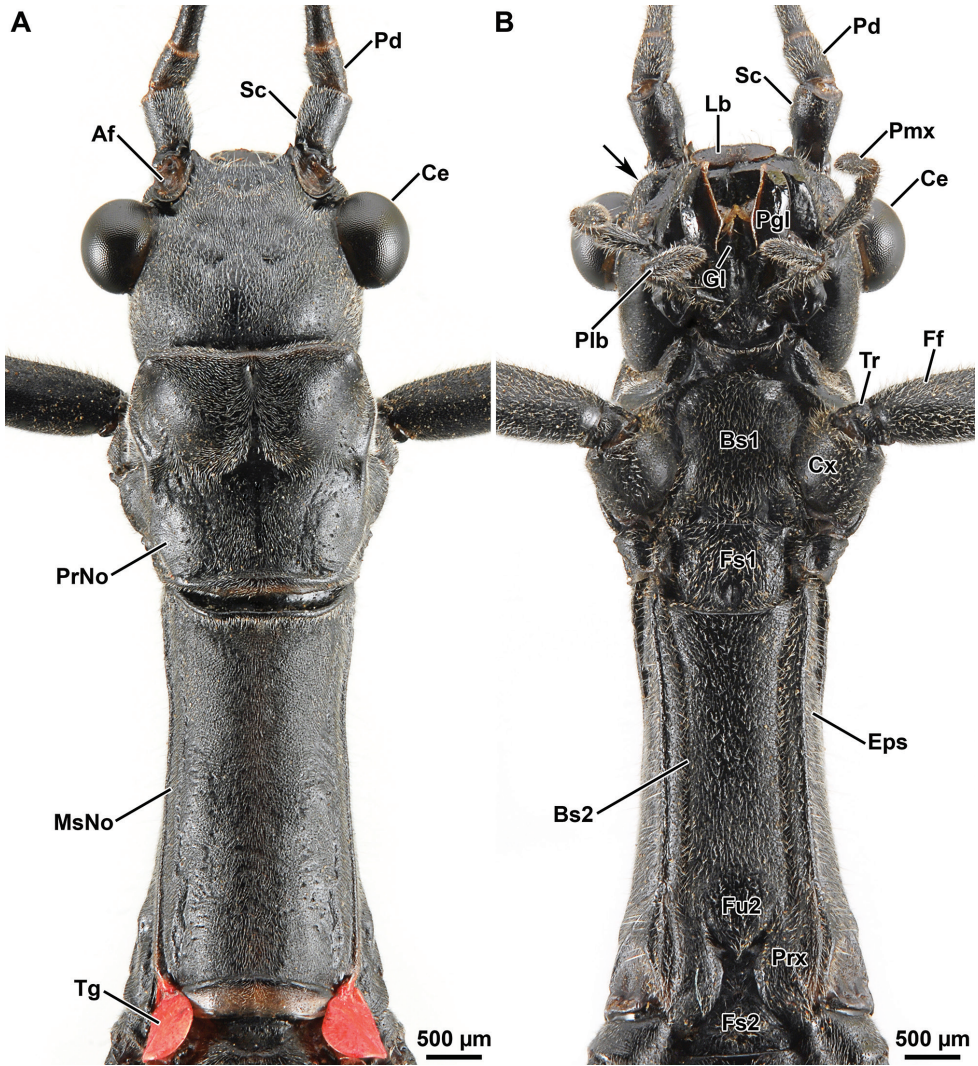


Figure 4. *Orthomeria (Orthomeria) kangi* sp. n. ♂ head and pro- and mesothorax **A** dorsal view **B** ventral view; Af, antennal field; Bs1-Bs2, pro- and mesothoracic basisterna; Ce, compound eye; Cx, coxa; Eps, episternum; Ff, fore femur; Fs1-Fs2, pro- and mesothoracic furcasternites; Fu2, mesothoracic furca; Gl, glossa; Lb, labrum; Pd, pedicellus; Pgl, paraglossa; Plb, labial palpus; Pmx, maxillary palpus; PrNo, pronotum; Prx, precoxale; Sc, scapus; Tg, tegmina; Tr, trochanter; Arrow, frontal convexity.

responding tibia (Fig. 2A). Proximal tarsomere (1) elongated, about as long as combined length of tarsomeres 2–4; tarsomeres 1–4 progressively shorter; distal tarsomere (5) distinctly shorter than combined length of tarsomeres 1–4 (Fig. 6A). Tarsomeres 1–4 each with a small euplantula, absent on tarsomere 5 (Fig. 6A). Pretarsus with well developed unguitactor plate; arolium large with broad outer band covered with oval or rounded outgrowths (Fig. 6B–C); pretarsal claws distinctly pectinate (Fig. 6D).

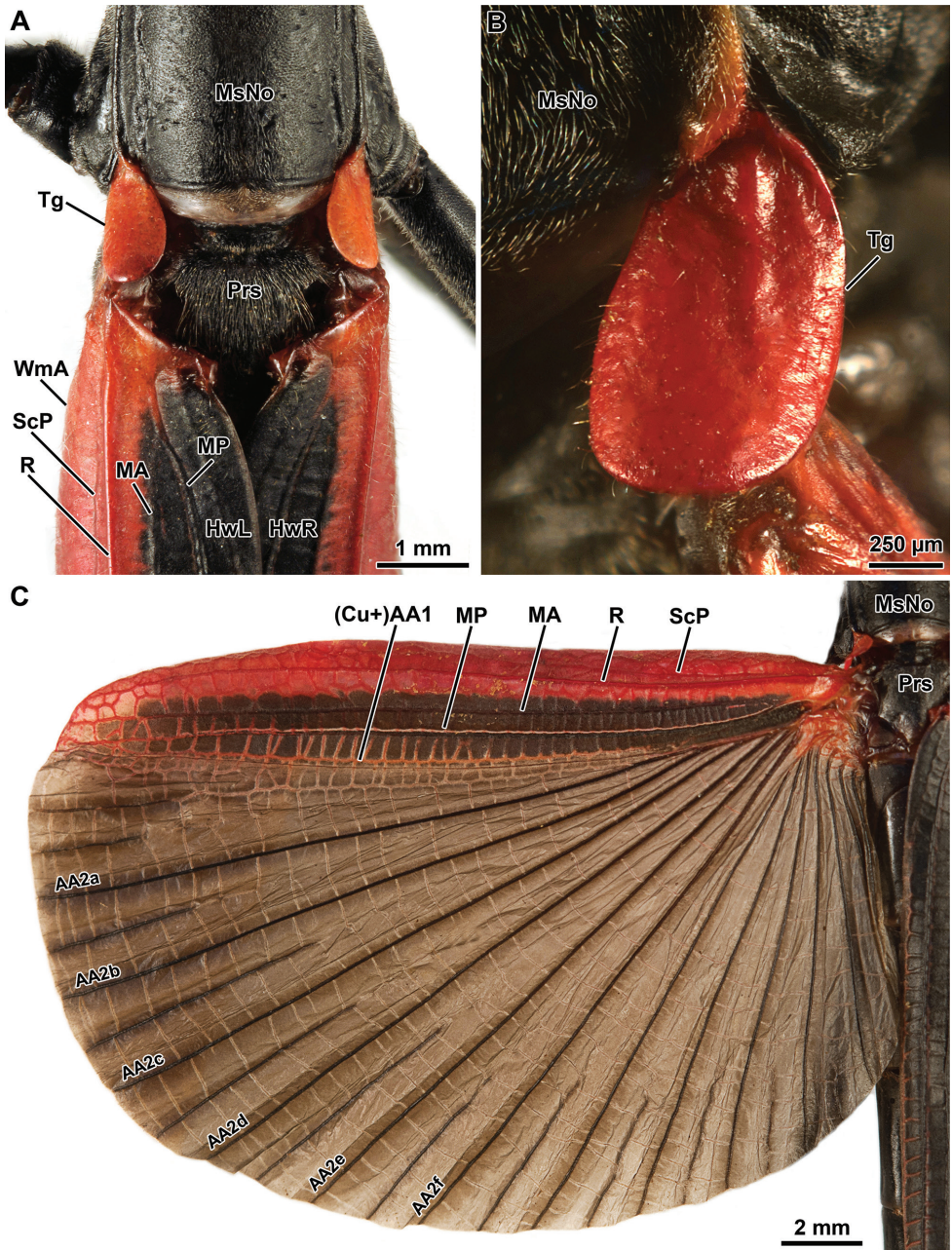


Figure 5. *Orthomeria (Orthomeria) kangi* sp. n. ♂ **A** Pterothorax, dorsal view **B** Right tegmina, lateral view **C** Left hind wing, dorsal view; AA2a–f, second anterior Analis; (Cu+)AA1, Cubitus + first anterior Analis; HwL, Left hind wing; HwR, right hind wing; MA, anterior Media; MP, posterior Media; MsNo, mesonotum; Prs, prescutum; R, Radius; ScP, posterior Subcosta; Tg, tegmina; WmA, anterior margin of the hind wing.

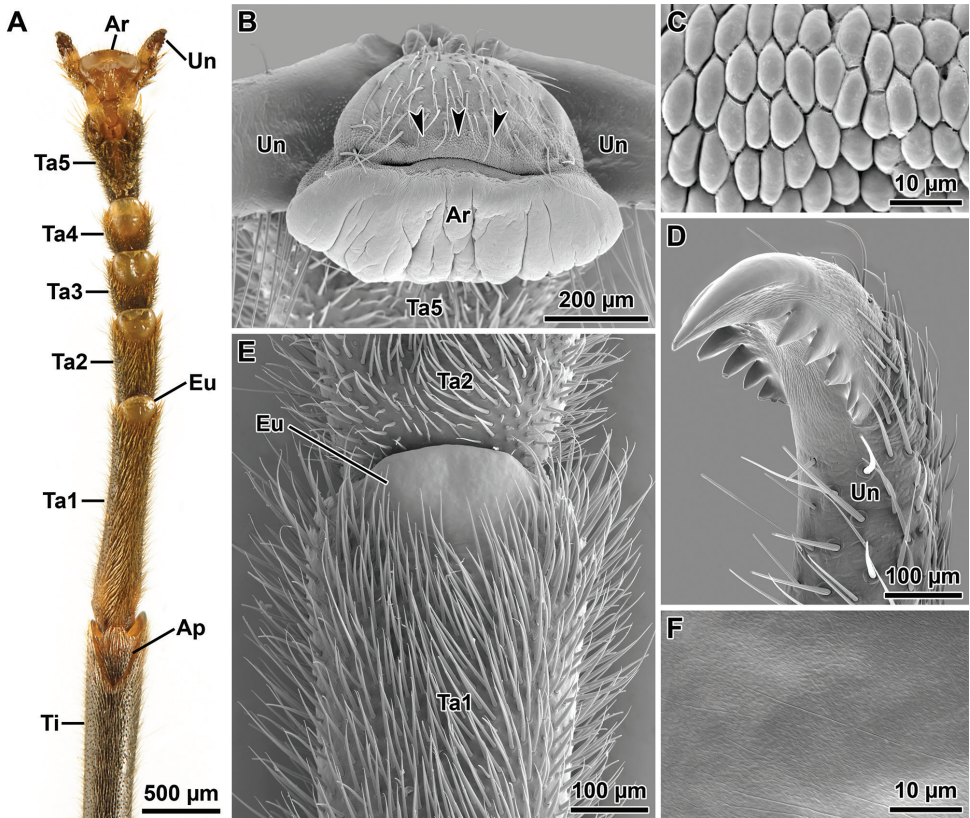


Figure 6. *Orthomeria (Orthomeria) kangi* sp. n. tarsal and pretarsal attachment devices **A** Fore tarsus, ventral view **B** Arolium, frontal view, arrowheads indicate the outer band **C** Arolium's micropattern at the outer band level **D** Pretarsal claw, lateral view **E** Tarsal euplantula, ventral view **F** Euplantula's micropattern; Ap, area apicalis; Ar, arolium; Eu, euplantula; Ta1-Ta5, tarsomeres 1-5; Ti, tibia; Un, peretarsal claws.

Euplantulae without transverse furrows and lacking sensory bristles (Fig. 6E); surface microstructure smooth with irregular patterns of microgrooves (Fig. 6F).

Abdomen: About 1.60 times length of head and thorax combined. Segments 2–5 increasing in length, 6–9 decreasing in length, 10 about 1.40 times length of 9. First tergum (= median segment) longer than wide, and longer than metanotum, fused to the metanotum. Terga 2–6 longer than broad; terga 7–10 broader than long (Fig. 7A). Sternum 1 fused with the metasternum. Sterna without carinae. Sternum 9 undivided, upcurving and slightly boat shaped in lateral view (Fig. 7B), about 2.50 times length of sternum 8 (Fig. 7C), apex rounded distinctly projecting beyond segment 10. Tergum 10 slightly longer than tergum 9, hind margin concave dorso-medially (Fig. 7A). Tergal thorn pads lacking ventrally (Fig. 8A–B). Epiproct very short, triangular; paraprocts sub-triangular with a straight inner side (Fig. 8A). Cerci about 1.30 times length of tergum 10 (Fig. 7B), slightly flattened and gently incurved, clasper-like in appearance (Figs 7A–C, 8A). Distal tip of cerci broadened, vaguely bilobed; outer



Figure 7. *Orthomeria (Orthomeria) kangi* sp. n. ♂ postabdomen **A** dorsal view **B** lateral view **C** ventral view; Ce, cercus; T7-T10, terga 7-19; S7-S9, sterna 7-9; Vo, vomer.

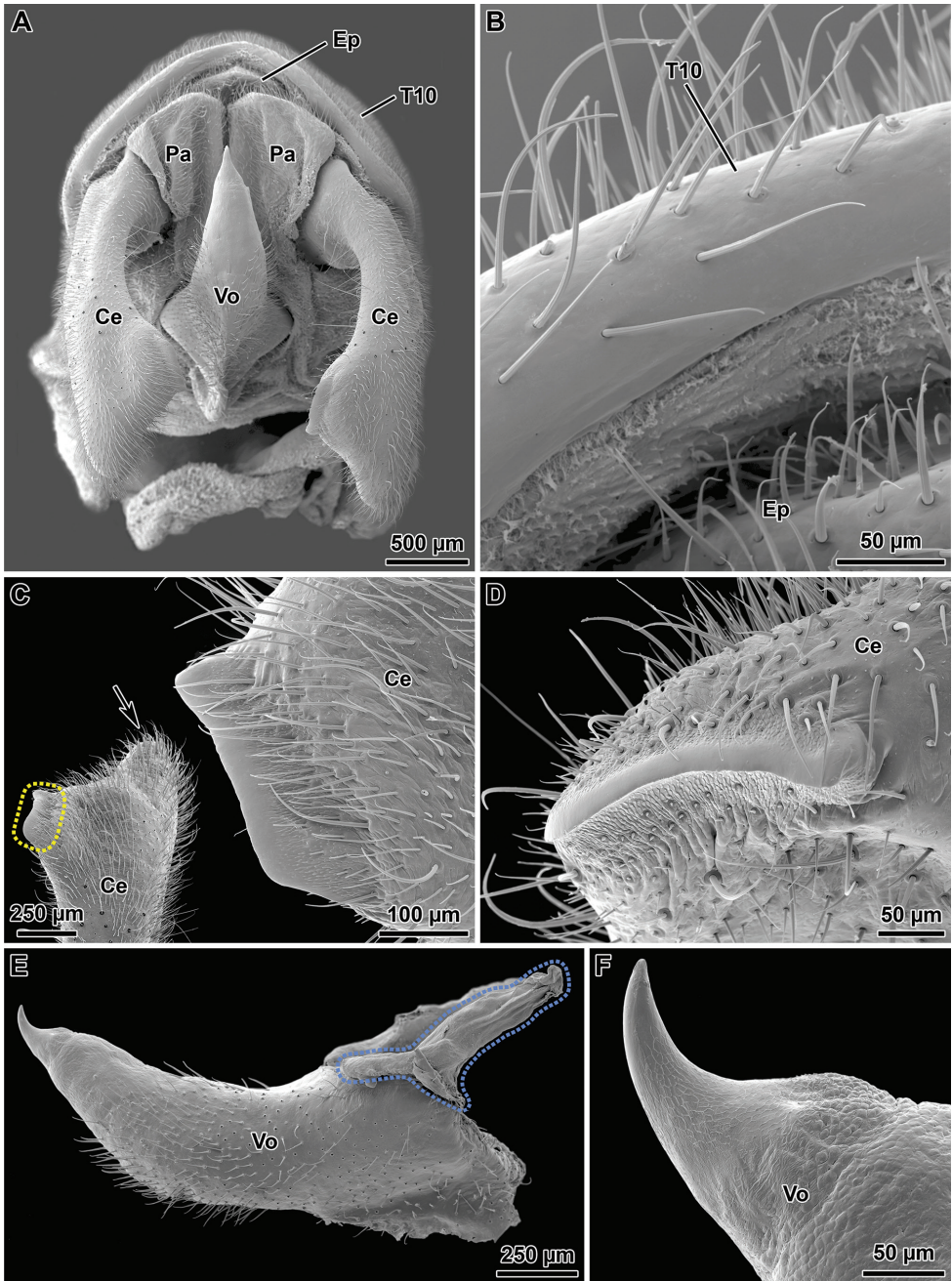


Figure 8. *Orthomeria (Orthomeria) kangi* sp. n. ♂ details of tenth abdominal segment **A** Whole segment X, ventral view **B** Hind margin of tergum 10, ventral view **C** Distal tip of right cercus with highlight (hatched area) and detail of the inner blade-like ridge, dorsal view, arrow indicates the outer pointed lobe **D** Blade-like ridge of right cercus, lateral view **E** Vomer, lateral view, hatched area indicates the proximal arm-like process **F** Spine-like apex of vomer, lateral view; Ce, cercus; Ep, epiproct; Pa, paraproct; T10, tergum 10; Vo, vomer.

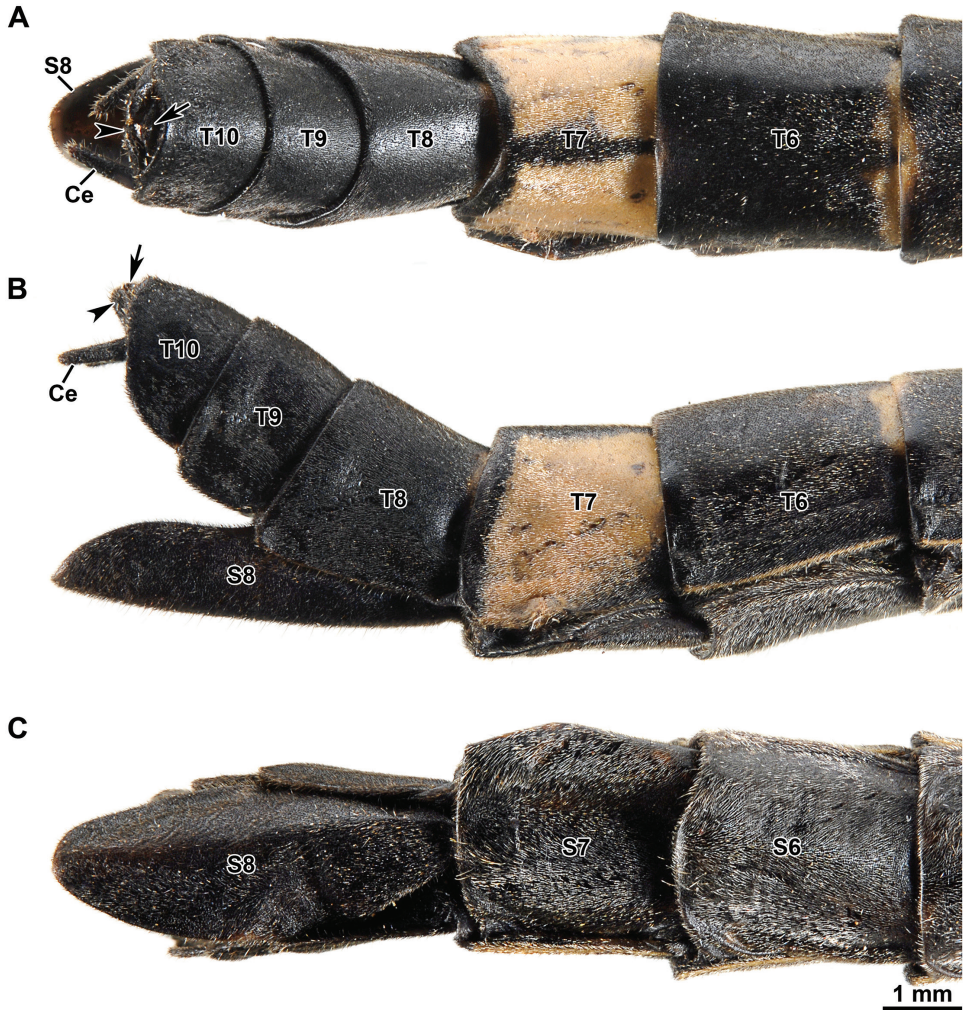


Figure 9. *Orthomeria (Orthomeria) kangj* sp. n. ♀ postabdomen **A** dorsal view **B** lateral view **C** ventral view; Ce, cercus; T6–T10, terga 6–10; S6–S8, sterna 6–8.

lobe roundly pointed, inner lobe differentiated into a sclerotized blade-like ridge ca. 340–360 μm in length (Fig. 8C–D). Vomer acutely triangular and setose (Figs 7A–B, 8A), inserted into sternum 10 through two proximal arm-like processes (Fig. 8E); proximal two-thirds almost straight, distal third strongly curved upwards with smooth spine-like apex (Figs 7A–B, 8E–F).

Description of the female. The female differs from the male in the following characters. Body slightly larger (Table 1) and more robust (Fig. 2B). Colouration variable, typically similar to male, except abdominal tergum 7 pale brown with a definite dark longitudinal line medially and lateral margins of abdominal terga with yellowish rim (Figs 2B, 9A–B). Alternatively, body, compound eyes, antennae and legs brown; costal

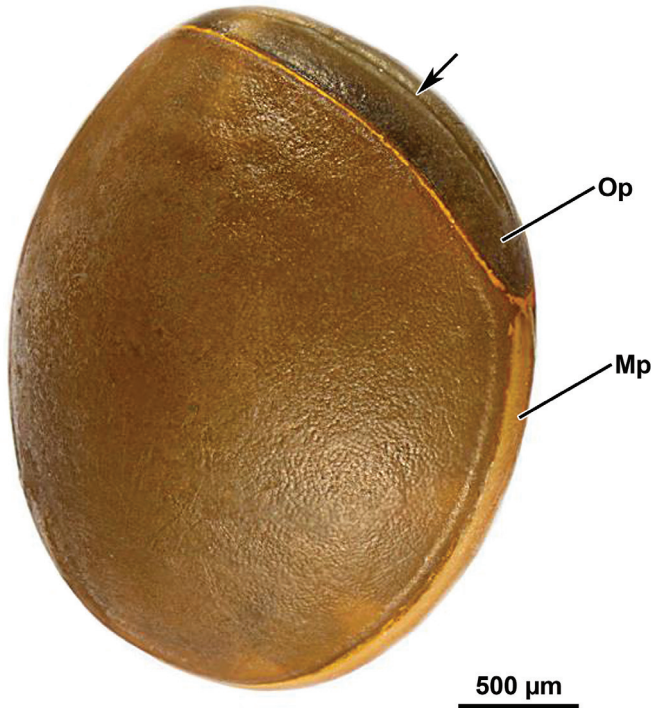


Figure 10. *Orthomeria (Orthomeria) kangi* sp. n. egg; Mp, micropylar plate; Op, operculum; Arrow, medial longitudinal furrow.

region of hind wings dark brown with pale brown venation, anterior margin with a blood red tinge near wing articulation (Suppl. material 1). Mesothorax parallel-sided. Length of hind wing variable, reaching to posterior margin of the fourth tergum up to extending midway on to the fifth tergum. Abdomen about 1.50 times length of head and thorax combined. Abdominal segments 2–3 increasing in length, 4 shorter than 3, 5–6 increasing in length, 7–10 progressively shorter, 10 ca. 0.90 times length of 9. Abdominal terga 2–10 broader than long in full-grown females. Hind margin of tergum 10 rounded (Fig. 9A). Cerci terete and straight (Fig. 9A–B). Sternum 8 (= operculum) folded in two along the middle, covering completely the ovipositor, apex roundly pointed (Fig. 9B–C).

External eggshell morphology. Capsule light brown, oval in outline, laterally flattened, surface minutely pitted (length, 2.6–2.7 mm; height, 2.3 mm; width, 1.6–1.7 mm) (Fig. 10). Operculum mid brown, elongate-oval with a medial longitudinal furrow, slightly convex in lateral aspect (height, 1.8 mm; width 0.7 mm). Opercular angle negative. Micropylar plate visible in lateral aspect, structured as pale brown stripe surrounding the entire capsule and delimited by a thin yellow rim extending also along the opercular opening area. Micropylar cup close to the posterior pole.

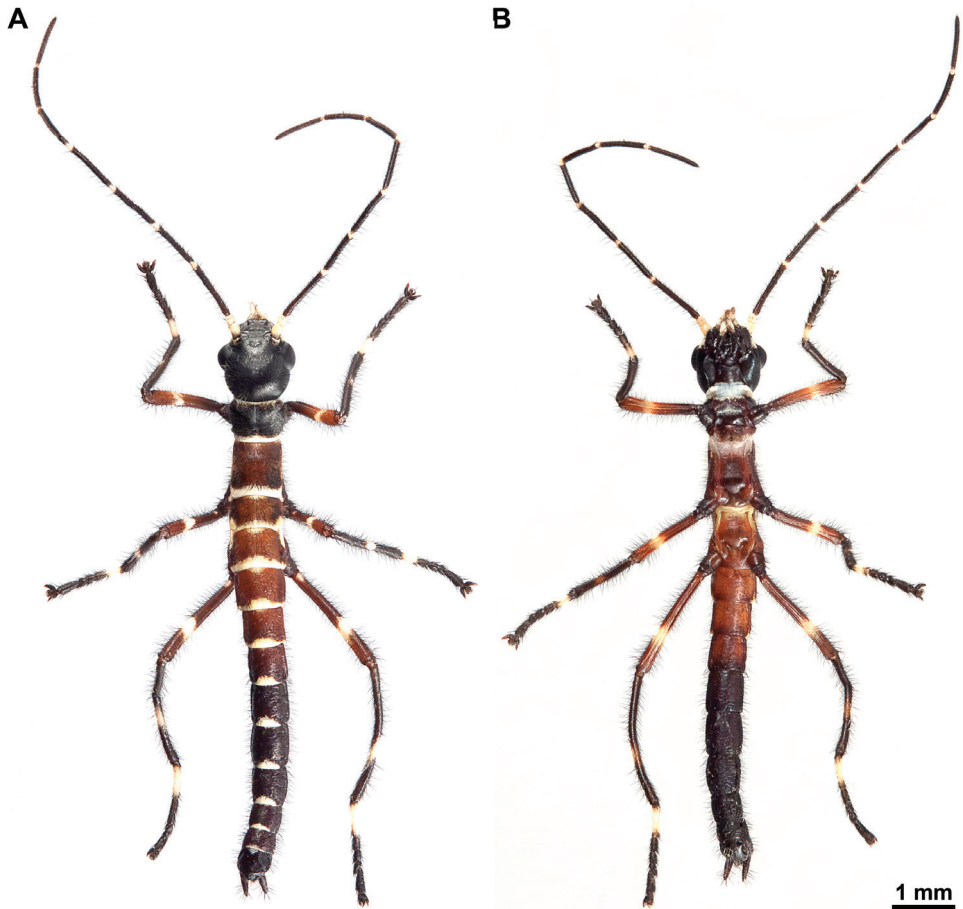


Figure 11. *Orthomeria* (*Orthomeria*) *kangii* sp. n. first instar nymph **A** Dorsal view **B** ventral view.

Description of the first-instar nymph. Body length ca. 8.9 mm. Head, prothorax, and abdominal segments V–X black; meso- and metatorax, and abdominal segments I–IV brown (Fig. 11A–B). Scape and pedicel white; flagellomeres black with white distal dot. Palpomeres of labial and maxillary palps white. Hind margin of thoracic and abdominal terga white. Femora brown with a white spot in the middle. Tibiae black with a central white band. Tarsi with proximal tarsomere white, remainder black.

Geographic distribution. The new species is so far reported only from the Benguet province, Luzon island, Northern Philippines (Fig. 12). Specimens have been found in the Sablang region (Barangay Bayabas, Mt. Bilbil) and in the Tuba region (Mt. Calugong).

Natural history observations. The studied locality, Sablang, is a mountainous region (400–650 m elevation) of the Benguet Province, in the north-west Philippines. It is characterised by the presence of small communities scattered around a main provincial road, with several pockets of secondary vegetation (Fig. 13A) and some areas



Figure 12. Distribution of *Orthomeria (Orthomeria) kangi* sp. n. in Luzon island.

of primary forests. Adults of *O. kangi* sp. n. were first observed at night on the leaf underside of *Ficus* spp. trees (Moraceae). The host plants were mainly big trees of an unidentified *Ficus* sp. ca. 8–10 m height and up to 10–15 m wide located on forested slopes. The stick insects have been found on the low hanging branches (< 4 m height), where the number of observed individuals varied from 1 to 10 per tree (Fig. 13B). The species was found also in smaller fig trees (e.g. *Ficus septica*) ca. 2–3 m height (Fig. 13C), and occasionally on shrubs of *Pipturus* spp. and *Leucosyke* spp. (Urticaceae) (Fig.



Figure 13. *Orthomeria* (*Orthomeria*) *kangi* sp. n. **A** Secondary vegetation in the type locality, Sablang, Benguet, Philippines **B** Adults on *Ficus* sp. **C** Adult females on *Ficus septica* **D** Adult female on *Pipturus arborescens*; arrowheads indicate the insects on branches. Photographs by Albert Kang.

13D), with usually 2–5 individuals present on the same plant. Daytime search revealed the presence of fewer individuals, mainly juveniles at different nymphal stages. Searching over a wide area, we noted that the distribution of the species on host trees was markedly discontinuous, with individuals concentrated on single larger plants and apparently absent from *Ficus* trees in the immediate vicinity.

Eggs were dropped to the ground and needed ca. 40 days to hatch at 23 °C. Newly hatched nymphs were reared to adulthood using the hauili tree (*Ficus septica*) or stinging nettle (*Urtica dioica*) as food plants. Under rearing conditions, the nymphal development lasted for ca. 60 days, and the average life span for males was ca. 45 days compared with ca. 140 days for females. The insects were active both during the day and night.

The mating was observed under rearing conditions. On day before the final moult, the subadult female starts to be guarded by 3–4 competing males, usually with one male mounted on the female's back and facing into the same direction as the female. Copulation starts immediately after the female has completed the last nymphal moult. Generally, we found that when presented with a receptive virgin female, the male



Figure 14. *Orthomeria (Orthomeria) kangi* sp. n. mating pair. Photograph by Albert Kang.

quickly mounts her and starts a series of abdominal bending movements apparently searching for the appropriate mating position. The female curve the abdominal tip upwards thereby exposing her terminalia, while the male bends its abdomen on the left side with his terminalia directed forward. The clasping cerci of the male grasp the female at the base of her eighth sternum, and at the same time a bulb-like phallic organ comes into contact with the female genitalia (Fig. 14). Copulation lasted approximately three hours. The presence of a spermatophore has not been ascertained. Mated females showed an aggressive behaviour towards potential mates, and multiple matings were rarely observed. They chase away approaching males through quivering movements of the body, beating legs on the substrate, and flashing their wings for a few seconds. This behaviour is also practiced by resting individuals when disturbed by conspecifics.

If threatened, adults and nymphs of *O. kangi* sp. n. spray a milky defensive secretion from the prothoracic exocrine glands and inevitably let themselves fall to the floor and quickly run away.

Taxonomic notes on some species of *Orthomeria (Orthomeria)*

During our comparative analysis of the type material and additional specimens of *Orthomeria* spp., we recognised that *Orthomeria catadromus* (Westwood, 1859) represents a junior synonym of *O. pandora* (Westwood, 1859), syn. n. Both species were published in the same publication (Westwood 1859), but *O. pandora* has page priority.

The type series of *O. catadromus* consists of three syntypes, two of them in BNHM and one in UMO. A specimen in BNHM bearing the following data is here designated as lectotype: the locality Sumatra was handwritten by Westwood on the identification label under *Aschiphasma catadromus*; the specimen has a white database label with the code BMNH(E) #845139. There is no separate label with a locality, however there is a small round grey label with a question mark. Although *O. catadromus* was originally recorded from Sumatra, there is reasonable doubt that this is in error, and subsequent reports of this species refer only to the Philippines (Bruner 1915, Bragg 2001). In fact, various species described by Westwood have doubtful locality data and several have since been recorded from different localities. Another example concerning the Philippine phasmid fauna is that of *Theramenes olivaceus* (Westwood, 1859), a species of Eubulidini (Heteropterygidae: Obriminae) originally described from Sri Lanka, but afterwards recorded from the Philippines (Bruner 1915) in accordance with the fairly restricted distribution of the tribe, not including Sri Lanka and continental Asia.

A lectotype is here designated also for *O. pandora* (Westwood, 1859). The original syntype series in BMNH originates from different localities. Two specimens originate from the Philippines and a third one from “ceram”. The specimens from the Philippines do not bear more precise data than “Philippine Islands”. The specimen from the Philippines still having one of its forelegs is hereby designated as lectotype.

Identification key to the species of *Orthomeria* (*Orthomeria*)



- 1 Hind area of wings with at the base a large sky blue area..... 2
- Hind area of wings uniformly dark or turning pale at the base without a distinct large sky blue area..... 3
- 2 Wings long, sky blue region not circular, beginning at A6; base of A 1–5 not blue *Orthomeria* (*O.*) *superba* (Redtenbacher, 1906)
- Wings short, base with an almost circular sky blue area which crosses all the anal veins..... *Orthomeria* (*O.*) *versicolor* (Redtenbacher, 1906)
- 3 short winged species, wings projecting slightly over abdominal tergum 5.... 4
- long winged species, wings projecting over abdominal tergum 7 5
- 4 Costal area of wings with definite orange area.....
..... *Orthomeria* (*O.*) *forstenii* (Haan, 1842)
- Costal area of wings with a definite blood red area.. *Orthomeria* (*O.*) *kangi* sp. n.
- 5 Mesonotum more than one and a half times as long as the pronotum.....
..... *Orthomeria* (*O.*) *pandora* (Westwood, 1859)
- Mesonotum not one and a half times the length of pronotum 6
- 6 Anterior portion to radial vein of hind wing uniformly yellow. Base of antennae black, thereafter rust coloured
..... *Orthomeria* (*O.*) *smaragdinum* (Redtenbacher, 1906)

- Anterior portion to radial vein of hind wing yellow with black cells. Antennae uniformly black *Orthomeria (O.) xanti* (Redtenbacher, 1906)

♀♀*

- 1 Hind area of wings with at the base a large sky blue area.....2
- Hind area of wings uniformly dark or turning pale at the base without a distinct large sky blue area.....3
- 2 Wings long, sky blue region not circular, beginning at A6; base of A 1–5 not blue *Orthomeria (O.) superba* (Redtenbacher, 1906)
- Wings short, base with an almost circular sky blue area which crosses all the anal veins.....*Orthomeria (O.) versicolor* (Redtenbacher, 1906)
- 3 Body > 50mm, tegmina brown, costal area of hind wings without red markings, tergum 7 pale without black longitudinal line.....
.....*Orthomeria (O.) pandora* (Westwood, 1859)
- Body < 50mm , tegmina red, costal area of hind wings with red markings, tergum 7 pale with a definite black longitudinal line centrally
.....*Orthomeria (O.) kangi* sp. n.

* Females of *Orthomeria (O.) forstenii*, *O. (O.) smaragdinum*, and *O. (O.) xanti* are unknown.

Discussion

Phylogenetic interpretation of morphological characters

O. kangi sp. n. shows some phylogenetically informative characters that are helpful to find its placement among the subgroups of Euphasmatodea. The unbranched radial vein (= absence of the radial sector), the undivided sternum 9 and the incurved cerci with an apical spine or tooth in the male, represent key synapomorphies of Aschiphasmatidae (Bradler 2009). The latter specialized character is definitely homologous with the sharp blade-like ridge found in the male cerci of the new species. *O. kangi* sp. n. also shows distinctly pectinate claws, a putative derived character of the tribe Aschiphasmatini (Aschiphasmatidae excluding *Dajaca*) (Bragg 2001, Bradler 2009). Within Aschiphasmatidae, a brightly coloured (yellow, orange, or red) costal region of the hind wings occurs only in *Orthomeria*. This character can be interpreted as an autapomorphy that provides evidence for the monophyly of the genus.

Attachment structures of Aschiphasmatidae has been previously analysed in *Daliphasma eximius* (Gottardo 2011b). A feature shared between this species and *O. kangi* sp. n. is the absence of an euplantula on tarsomere V. In *Timema*, a small euplantula is present on the distal tarsomere (Beutel and Gorb 2008). Within Euphas-

matodea the condition appears variable: the euplantula is present and generally small compared to the size of tarsomere V in *Eurycantha calcarata* and *Conlephasma enigma* (Gottardo and Heller 2012, Gottardo et al. 2015), while it is absent in several taxa including *Carausius morosus*, *Medauroidea extradentata*, *Ophicrania conlei*, and *Hermarchus leytensis* (Gottardo 2011a, Bußhardt et al. 2012, Gottardo and Vallotto 2014). The two species of Aschiphasmatae have also smooth euplantulae on tarsomeres I–IV. Interestingly, while *D. eximius* has a honeycomb micropattern, *O. kangi* sp. n. shows only faint microgrooves on the contact surface. It has been hypothesized that nubby euplantulae covered with acanthae are a groundplan feature of Phasmatodea (Beutel and Gorb 2008), implying secondary modification of these surface structures in Aschiphasmatae. It would be interesting to analyze the attachment structures of additional species of Aschiphasmatae, since the character system could be more diverse within the family.

The male terminalia of *O. kangi* sp. n. show a number of specific modifications. An unusual feature is the complete absence of clasping devices (the tergal thorn pads) on the hind margin of the tergum X. Within Aschiphasmatae these structures have been described in *D. eximius* as a single row of ca. 12 tooth-like projections (see Gottardo 2011b: fig. 5), and are usually present and well developed in Euphasmatodea (Bradler 2009). However, they are absent for example in *Timema*, *Agathemera*, in the taxon Sermyleformia sensu Bradler (2009), and their secondary loss has been established in extant leaf insects (partim) (Wedmann et al. 2007). It is conceivable that in *O. kangi* sp. n. the reduction of tergal thorn pads has been compensated by the acquisition of the specialized cerci, that together with the vomer form the male clasping organs of this species. The structure of male terminalia has been described here in detail for the first time in *Orthomeria*, and for future studies these characters may represent important diagnostic features of males of species of this genus, as also exemplified in other euphasmatodean taxa by Bradler (2009) and Buckley et al. (2014).

Intraspecific morphological variations

The captive rearing showed the presence of substantial intraspecific colour variation in the females of *O. kangi* sp. n. All wild individuals, both males and females, had the chromatic characters of the typical black colour morph. When the species was reared at cool temperatures (ca. 16 °C) all females developed the brown colour morph, while males were invariably black. Interestingly, the offspring of the brown females reared at warmer temperatures (ca. 23 °C) consisted of only black females.

A certain amount of variation was found also as to the length of the hind wings of females, regardless of the two colour morphs. In some females the hind wings reach the hind margin of the abdominal segment IV, whereas in other they can extend up to the hind margin of segment V. Intraspecific trends of variation in wing length have been rarely documented in Phasmatodea. A different example is that of *Asceles margaritatus*

Redtenbacher, 1908 (Necrosciinae), where two separated macropterous and microp-
terous forms involving both sexes have been described (Bragg 2002).

Foodplants of *Orthomeria*

Information about *Orthomeria* foodplants are mainly available for two species of the subgenus *Parorthomeria*. Both *Orthomeria* (*Parorthomeria*) *alexis* and *O.* (*P.*) *cuprinus* use trees of the genus *Macaranga* (Euphorbiaceae) as foodplants (Junker et al. 2008, Shimizu-kaya and Itioka 2015). For members of the subgenus *Orthomeria*, Bragg (2001) reported *Oreocnide rubescens* (Urticaceae) as foodplant of *Orthomeria* (*Orthomeria*) *superba* from Borneo. *O. kangii* sp. n. also feeds on members of Urticaceae, but seems to prefer *Ficus* spp. (Moraceae) which represents a new foodplant association for *Orthomeria*.

The species of *Orthomeria* from the Philippines

As a result of this study, seven species of *Orthomeria* (*Orthomeria*) are recognised, two of which occur in the Philippines: *O.* (*O.*) *pandora* and *O.* (*O.*) *kangii* sp. n. Both species seem to be restricted to Luzon island. *O.* (*O.*) *pandora* is found in the Sierra Madre mountain range in east Luzon, while *O.* (*O.*) *kangii* sp. n. occurs in the Benguet province in west Luzon. It is likely that other species of *Orthomeria* will be discovered in the other island of the Philippine archipelago.

Acknowledgements

We wish to thank Albert Kang (Manila, Philippines) for providing photographs and habitat information, and Olivier Béthoux (Muséum National d'Histoire Naturelle, France) for helpful advice on wing venation. The manuscript benefited from the useful comments of Sven Bradler (Georg-August-Universität Göttingen, Germany) and Thomas R. Buckley (The University of Auckland, New Zealand).

References

- Beutel RG, Gorb SN (2008) Evolutionary scenarios for unusual attachment devices of Phasmatodea and Mantophasmatodea (Insecta). *Systematic Entomology* 33: 501–510. doi: 10.1111/j.1365-3113.2008.00428.x
- Bradler S (2009) Die Phylogenie der Stab- und Gespentschrecken (Insecta: Phasmatodea). *Species Phylogeny and Evolution* 2: 3–139.

- Bragg PE (2001) Phasmids of Borneo. Natural History Publications (Borneo), Kota Kinabalu, Sabah, 772 pp.
- Bragg PE (2002) *Asceles margaritatus* Redtenbacher, a phasmid from Borneo with two distinct wing lengths. Phasmid Studies 11: 5–7.
- Bragg PE (2006) A new subgenus of *Orthomeria* Kirby, 1904 and a new species from Danum Valley, Sabah. Phasmid Studies 14: 12–19.
- Bresseel J (2012) First record of the genus *Loxopsis* from the Philippines with the discovery of two new species (Phasmida, Diapheromeridae, Necrosiinae). Zootaxa 3326: 49–61.
- Bruner L (1915) Preliminary catalogue of the orthopteroid insects of the Philippine Islands. University studies of the University of Lincoln, Nebraska 15: 195–281.
- Buckley TR, Myers SS, Bradler S (2014) Revision of the stick insect genus *Clitarchus* Stål (Phasmatodea: Phasmatidae): new synonymies and two new species from northern New Zealand. Zootaxa 3900: 451–482. doi: 10.11646/zootaxa.3900.4.1
- Bußhardt P, Wolf H, Gorb S (2012) Adhesive and frictional properties of tarsal attachment pads in two species of stick insects (Phasmatodea) with smooth and nubby euplantulae. Zoology 115: 135–141. doi: 10.1016/j.zool.2011.11.002
- Clark Sellick JT (1997) Descriptive terminology of the phasmid egg capsule, with an extended key to the phasmid genera based on egg structure. Systematic Entomology 22: 97–122. doi: 10.1046/j.1365-3113.1997.d01-30.x
- Gottardo M (2007) First record of the genus *Dinophasma* Uvarov from the Philippines (Phasmatodea: Aschiphasmatidae). Zootaxa 1530: 33–36.
- Gottardo M (2008) A new species of *Korinnis* Günther from the Philippines (Phasmatodea: Prisopodidae: Korinninae). Zootaxa 1917: 61–64.
- Gottardo M (2011a) Occurrence of the genus *Ophicrania* Kaup (Insecta: Phasmatodea) in Panay island (Philippines) and description of a new species. Comptes Rendus Biologies 334: 320–326. doi: 10.1016/j.crv.2011.01.006
- Gottardo M (2011b) A new genus and new species of Philippine stick insects (Insecta: Phasmatodea) and phylogenetic considerations. Comptes Rendus Biologies 334: 555–563. doi: 10.1016/j.crv.2011.04.003
- Gottardo M, Heller P (2012) An enigmatic new stick insect from the Philippine Islands (Insecta: Phasmatodea). Comptes Rendus Biologies 335: 594–601. doi: 10.1016/j.crv.2012.07.004
- Gottardo M, Vallotto D (2014) External macro- and micromorphology of the male of the stick insect *Hermarchus leytenis* (Insecta: Phasmatodea) with phylogenetic considerations. Comptes Rendus Biologies 337: 258–268. doi: 10.1016/j.crv.2014.02.005
- Gottardo M, Vallotto D, Beutel RG (2015) Giant stick insects reveal unique ontogenetic changes in biological attachment devices. Arthropod Structure & Development 44: 195–199. doi: 10.1016/j.asd.2015.01.001
- Hennemann FH, Conle OV, Gottardo M, Bresseel J (2009) On certain species of the genus *Phyllium* Illiger, 1798, with proposals for an intra-generic systematization and the descriptions of five new species from the Philippines and Palawan (Phasmatodea: Phylliidae: Phylliinae: Phylliini). Zootaxa 2322: 1–83.

- Junker RR, Itioka T, Bragg PE, Blüthgen N (2008) Feeding preferences of phasmids (Insecta: Phasmida) in a Bornean dipterocarp forest. *Raffles Bulletin of Zoology* 56: 445–452.
- Ren D (1997) First record of fossil stick-insects from China with analyses of some palaeobiological features (Phasmatodea: Hagiphasmatidae fam. n.). *Acta Zootaxonomica Sinica* 22: 268–282.
- Shimizu-kaya U, Itioka T (2015) Host plant use by two *Orthomeria* (Phasmida: Aschiphasmatini) species feeding on *Macaranga* myrmecophytes. *Entomological Science* 18: 113–122. doi: 10.1111/ens.12093
- Wedmann S, Bradler S, Rust J (2007) The first fossil leaf insect: 47 million years of specialized cryptic morphology and behavior. *Proceedings of the National Academy of Sciences of the USA* 104: 565–569. doi: 10.1073/pnas.0606937104
- Westwood JO (1859) Catalogue of Orthopterous insects in the collection of the British Museum – Part 1, Phasmidae. British Museum, London, 195 pp.

Supplementary material I

Intraspecific colour variations

Authors: Davide Vallotto, Joachim Bresseel, Thierry Heitzmann, Marco Gottardo

Data type: multimedia

Explanation note: Brown colour morph of a female of *Orthomeria* (*Orthomeria*) *kangi* sp. n.

Copyright notice: This dataset is made available under the Open Database License (<http://opendatacommons.org/licenses/odbl/1.0/>). The Open Database License (ODbL) is a license agreement intended to allow users to freely share, modify, and use this Dataset while maintaining this same freedom for others, provided that the original source and author(s) are credited.