

CORRECTION

Correction: Neighbourhood Characteristics and Long-Term Air Pollution Levels Modify the Association between the Short-Term Nitrogen Dioxide Concentrations and All-Cause Mortality in Paris

S  verine Deguen, Claire Petit, Ang  lique Delbarre, Wahida Kihal, Cindy Padilla, Tarik Benmarhnia, Annabelle Lapostolle, Pierre Chauvin, Denis Zmirou-Navier

The images for Figs 1 and 2 are incorrectly switched. The image that appears as Fig 1 should be Fig 2, and the image that appears as Fig 2 should be Fig 1. Please see corrected Figs 1 and 2 here. The figure captions appear in the correct order.

There are errors in Fig 3. Please see the corrected Fig 3 here.

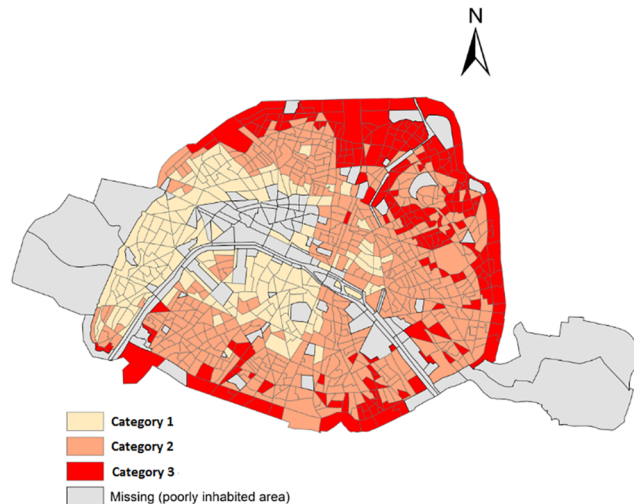


Fig 1. Socioeconomic categories in census block areas in Paris.

doi:10.1371/journal.pone.0150875.g001

OPEN ACCESS

Citation: Deguen S, Petit C, Delbarre A, Kihal W, Padilla C, Benmarhnia T, et al. (2016) Correction: Neighbourhood Characteristics and Long-Term Air Pollution Levels Modify the Association between the Short-Term Nitrogen Dioxide Concentrations and All-Cause Mortality in Paris. PLoS ONE 11(3): e0150875. doi:10.1371/journal.pone.0150875

Published: March 1, 2016

Copyright:    2016 Deguen et al. This is an open access article distributed under the terms of the [Creative Commons Attribution License](https://creativecommons.org/licenses/by/4.0/), which permits unrestricted use, distribution, and reproduction in any medium, provided the original author and source are credited.

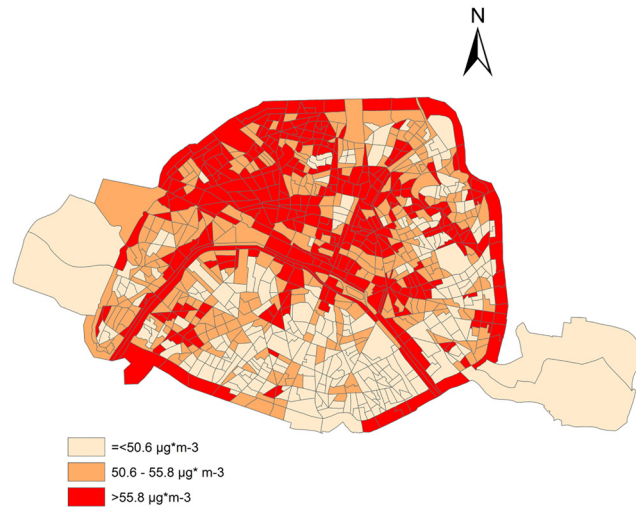
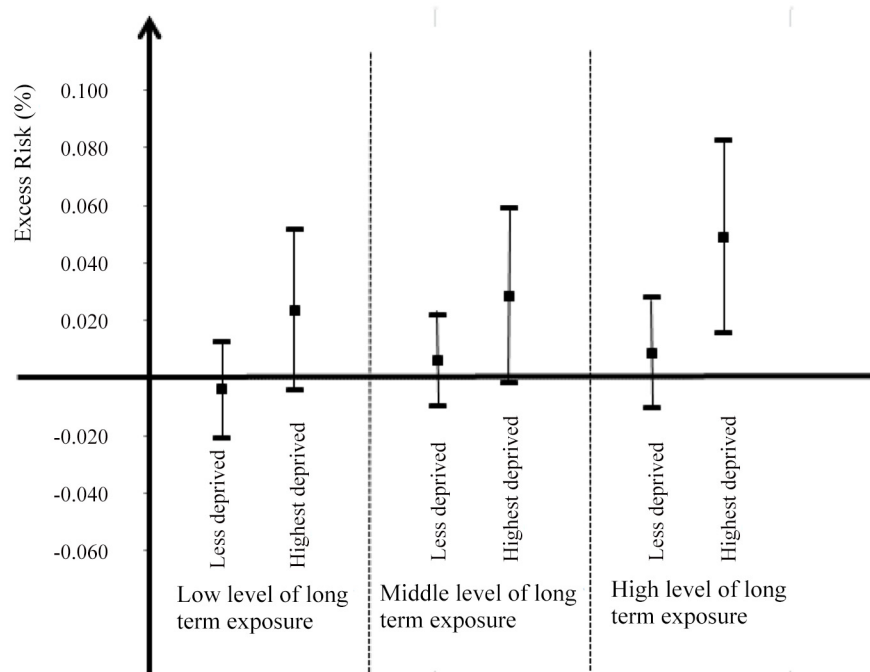


Fig 2. NO₂ concentrations from 2002 to 2009, in census block areas within Paris.

doi:10.1371/journal.pone.0150875.g002



* Highest deprived class groups the privileged and the middle deprived classes

Fig 3. Excess risk of mortality associated with a 10-µg/m³ short-term NO₂ increase and 95% confidence Interval, stratified by SES and long-term NO₂ concentrations- Paris, France, 2004–2009.

doi:10.1371/journal.pone.0150875.g003

Reference

1. Deguen S, Petit C, Delbarre A, Kihal W, Padilla C, Benmarhnia T, et al. (2015) Neighbourhood Characteristics and Long-Term Air Pollution Levels Modify the Association between the Short-Term Nitrogen Dioxide Concentrations and All-Cause Mortality in Paris. PLoS ONE 10(7): e0131463. doi: [10.1371/journal.pone.0131463](https://doi.org/10.1371/journal.pone.0131463) PMID: [26197409](https://pubmed.ncbi.nlm.nih.gov/26197409/)