

RESEARCH ARTICLE

# Statin Safety in Chinese: A Population-Based Study of Older Adults

Daniel Q. Li<sup>1</sup>, Richard B. Kim<sup>2</sup>, Eric McArthur<sup>3</sup>, Jamie L. Fleet<sup>1</sup>, Robert A. Hegele<sup>4</sup>, Baiju R. Shah<sup>3,5</sup>, Matthew A. Weir<sup>1,3</sup>, Amber O. Molnar<sup>6</sup>, Stephanie Dixon<sup>3,7</sup>, Jack V. Tu<sup>3,5</sup>, Sonia Anand<sup>8</sup>, Amit X. Garg<sup>1,3\*</sup>

**1** Division of Nephrology, Department of Medicine, Western University, London, Canada, **2** Division of Clinical Pharmacology, Department of Medicine, Western University, London, Canada, **3** Institute for Clinical Evaluative Sciences (ICES) Western, London, Ontario, Canada, **4** Blackburn Cardiovascular Genetics Laboratory, Robarts Research Institute, University of Western Ontario, London, Ontario, Canada, **5** Sunnybrook Health Sciences Centre, Toronto, Canada, **6** Division of Nephrology, Department of Medicine, University of Ottawa, Ottawa, Ontario, Canada, **7** Department of Epidemiology and Biostatistics, Western University, London, Canada, **8** Population Health Research Institute, McMaster University and Hamilton Health Sciences, Hamilton, ON, Canada

\* [amit.garg@lhsc.on.ca](mailto:amit.garg@lhsc.on.ca)



OPEN ACCESS

**Citation:** Li DQ, Kim RB, McArthur E, Fleet JL, Hegele RA, Shah BR, et al. (2016) Statin Safety in Chinese: A Population-Based Study of Older Adults. PLoS ONE 11(3): e0150990. doi:10.1371/journal.pone.0150990

**Editor:** James M Wright, University of British Columbia, CANADA

**Received:** July 31, 2015

**Accepted:** February 21, 2016

**Published:** March 8, 2016

**Copyright:** © 2016 Li et al. This is an open access article distributed under the terms of the [Creative Commons Attribution License](https://creativecommons.org/licenses/by/4.0/), which permits unrestricted use, distribution, and reproduction in any medium, provided the original author and source are credited.

**Data Availability Statement:** All relevant data are within the paper and its Supporting Information files.

**Funding:** This study was supported by the Institute for Clinical Evaluative Sciences (ICES) Western site. ICES is funded by an annual grant from the Ontario Ministry of Health and Long-Term Care (MOHLTC). Core funding for ICES Western is provided by the Academic Medical Organization of Southwestern Ontario (AMOSO), the Schulich School of Medicine and Dentistry (SSMD), Western University, and the Lawson Health Research Institute (LHRI). This project was conducted with members of the provincial ICES Kidney, Dialysis, and Transplantation Research

## Abstract

### Background

Compared to Caucasians, Chinese achieve a higher blood concentration of statin for a given dose. It remains unknown whether this translates to increased risk of serious statin-associated adverse events amongst Chinese patients.

### Methods

We conducted a population-based retrospective cohort study of older adults (mean age, 74 years) newly prescribed a statin in Ontario, Canada between 2002 and 2013, where 19,033 Chinese (assessed through a validated surname algorithm) were matched (1:3) by propensity score to 57,099 non-Chinese. This study used linked healthcare databases.

### Findings

The follow-up observation period (mean 1.1, maximum 10.8 years) was similar between groups, as were the reasons for censoring the observation period (end of follow-up, death, or statin discontinuation). Forty-seven percent (47%) of Chinese were initiated on a higher than recommended statin dose. Compared to non-Chinese, Chinese ethnicity did not associate with any of the four serious statin-associated adverse events assessed in this study [rhabdomyolysis hazard ratio (HR) 0.61 (95% CI 0.28 to 1.34), incident diabetes HR 1.02 (95% CI 0.80 to 1.30), acute kidney injury HR 0.90 (95% CI 0.72 to 1.13), or all-cause mortality HR 0.88 (95% CI 0.74 to 1.05)]. Similar results were observed in subgroups defined by statin type and dose.

### Conclusions

We observed no higher risk of serious statin toxicity in Chinese than matched non-Chinese older adults with similar indicators of baseline health. Regulatory agencies should review

Program, which receives programmatic grant funding from the Canadian Institutes of Health Research. The opinions, results, and conclusions are those of the authors and are independent from the funding sources. No endorsement by ICES, AMOSO, SSMD, LHRI, or the MOHLTC is intended or should be inferred.

**Competing Interests:** Dr. Garg received an investigator-initiated grant from Astellas and Roche to support a Canadian Institutes of Health Research study in living kidney donors, and his institution received unrestricted research funding from Pfizer. He is also supported by the Dr. Adam Linton Chair in Kidney Health Analytics. Dr. Kim is supported by the Wolfe Medical Research Chair in Pharmacogenomics and by grants from the Canadian Institutes of Health Research (MOP-89753) and the Drug Safety and Effectiveness Network (DSEN-PREVENT, FRN-117588). Dr. Tu is a Canada Research Chair in Health Services Research and received a Career Investigator Award from the Heart and Stroke Foundation. This does not alter the authors' adherence to PLOS ONE policies on sharing data and materials. The authors declare that they have no other relevant financial interests.

available data, including findings from our study, to decide if a change in their statin dosing recommendations for people of Chinese ethnicity is warranted.

## Introduction

Chinese ethnicity is often associated with heightened drug sensitivity, likely due to genetic differences in drug metabolism and clearance [1, 2]. For this reason, the recommended doses of many therapeutic drugs are lower for Chinese (and others of Asian ethnicity) living in Western countries [3–5]. This recommendation extends to the use of statins, one of the most frequently prescribed drugs in the world (global users projected to reach 1 billion) [6]. Statins are associated with several rare but serious adverse events in a dose-dependent manner, including rhabdomyolysis, new-onset diabetes, and possibly acute kidney injury [7–11]. Pharmacokinetic studies have demonstrated that compared to Caucasians, Chinese achieve a higher blood concentration of statins for a given dose [12–14]. Based on this evidence, Health Canada and the US Food and Drug Administration (FDA) currently list Asian ethnicity as a risk factor for statin-induced rhabdomyolysis and recommend a lower starting and maximum dose of rosuvastatin in all Asians [15, 16]. However, it remains unclear whether Asians truly experience a higher risk of serious statin toxicity compared to non-Asians in routine practice. Previous studies have demonstrated comparable statin safety and efficacy profiles between South Asians and Caucasians living in Canada [17], while there is no clear consensus for East Asian populations living in Western countries. People of Chinese origin comprise roughly 20% of the global population and represent one of the largest minority populations in North America [18, 19]. In this population-based study in Ontario, Canada, we compared the risk of serious statin-associated adverse events in older adults of Chinese and non-Chinese origin.

## Methods

### Study Design and Setting

We conducted a population-based, retrospective cohort study at the Institute for Clinical Evaluative Sciences (ICES) according to an established protocol approved by the Research Ethics Board at Sunnybrook Health Sciences Centre (Toronto, Canada). Data on adults 66 years of age and older between June 2002 and March 2013 were obtained and analyzed through linked healthcare databases in the province of Ontario. Participant informed consent was not required for this study as all patient information was anonymized and de-identified prior to analysis. The province has about 13.6 million residents, 16% of whom are 65 years or older and have universal coverage for prescription drugs, and 4.7% of whom self-identify as Chinese [18, 20]. The reporting of this study follows guidelines for observational studies (Table A in S1 File) [21]. The date of the first prescription of a study statin served as the index date (also referred to as the cohort entry date or the date of statin initiation).

### Data Sources

We ascertained patient characteristics, drug use, covariate information and outcome data using records from five databases. The Ontario Registered Persons Database contains demographic and vital status information for all Ontario residents who have ever been issued a health card. We used the Ontario Drug Benefit database to identify prescription drug use. This database contains highly accurate records (error rate < 1%) for all outpatient prescriptions dispensed to people aged 65 years or older [22]. We identified diagnostic and procedural information on all

hospitalizations from the Canadian Institute for Health Information Discharge Abstract Database (CIHI-DAD). We obtained covariate information from the Ontario Health Insurance Plan (OHIP) database, which includes fee-for-service health claims for inpatient and outpatient physician services. Finally, we identified new onset diabetes from the Ontario Diabetes Database (ODD) [23]. We have previously used these databases to research adverse drug events (including outcomes of statin toxicity and health services) [24–30]. We used *International Classification of Diseases, 9th revision (ICD-9; pre-2002)* and *10th revision (ICD-10; post-2002)* codes to assess baseline comorbidities in the three years prior to the index date (Table B in [S1 File](#)). The codes we used to ascertain outcomes are detailed in Table C in [S1 File](#), which lists only *ICD-10* codes as this was the only coding system in use during the follow-up period.

## Classification by Chinese Ethnicity

We identified patients of Chinese and non-Chinese ethnicity using a list of 1,133 unique Chinese surnames prior to anonymization of linked healthcare data. This surname list was developed and validated in Ontario, and has a sensitivity of 80% and a positive predictive value of 92% in classifying individuals who self-identify as Chinese [31]. While people of other Asian ethnicities are included in the non-Chinese group, the proportion is likely small as 77% of the Ontario population does not belong to a visible ethnic minority [32].

## Patients

We established a cohort of older adults (i.e. > 65 years) in Ontario, Canada, who initiated one of three study statins (atorvastatin, rosuvastatin, or simvastatin). Other drugs in this class are infrequently used in Ontario, comprising less than 6% of all statin prescriptions during the study period. We excluded patients if they met any of the following criteria: (a) they were in their first year of eligibility for prescription drug coverage (aged 65 years), to avoid incomplete medication records; (b) they received a prescription for any statin (study or non-study) in the 180 days prior to the index date, to confirm new statin use; (c) they were without healthcare eligibility in the 3 years prior to index date (for reasons such as immigration), to ensure sufficient data to assess baseline comorbidities, and (d) they had co-prescriptions for potent CYP3A4 inhibitors (protease inhibitors, chloramphenicol, and antifungals) in the 180 days prior to their index date, to avoid possible statin toxicity from drug-drug interactions [33]. A patient could enter the cohort only once. To select statin users with similar characteristics, Chinese were matched 1:3 to non-Chinese on the following baseline characteristics: age (within two years), sex, index date (same year), chronic kidney disease, coronary artery disease, statin type and dose (high dose defined as  $\geq 10$  mg rosuvastatin,  $\geq 20$  mg atorvastatin, or  $\geq 40$  mg simvastatin; other values were classified as low dose [8]), and the logit of the propensity score for the predicted probability of Chinese ethnicity (within 0.2 standard deviations). The propensity score was derived from a logistic regression model containing 58 appropriately selected baseline variables [34] ([Table 1](#)). To measure baseline comorbidity, we used two scoring systems: the Adjusted Clinical Group (ACG) score and the Charlson Comorbidity Index [35–37].

## Outcomes

We examined four outcomes associated with statin toxicity as specified in previous studies [7, 10, 24–27, 29, 30]: hospitalization with rhabdomyolysis, incident diabetes, hospitalization with acute kidney injury, and all-cause mortality (the diagnostic codes and their validity are presented in Table C in [S1 File](#)). For incident diabetes outcome, we excluded matched sets of patients with evidence of baseline diabetes. We selected acute kidney injury as a potential adverse event of statin toxicity based on a recent report [8]; while completing our study,

Table 1. Characteristics of Chinese and non-Chinese at cohort entry.

	Unmatched			Matched		
	Chinese	Non-Chinese	Standardized Difference *	Chinese	Non-Chinese	Standardized Difference *
	N = 20,598 (%)	N = 605,175 (%)		N = 19,033 (%)	N = 57,099 (%)	
<b>Demographics</b>						
Age, mean ± SD	73.6 ± 6.3	73.8 ± 6.5	3%	73.3 ± 6.0	73.3 ± 6.0	0%
Women	11,094 (54)	318,527 (53)	2%	10,260 (54)	30,780 (54)	0%
<b>Income Quintile †</b>						
One (lowest)	4,489 (22)	118,328 (20)	6%	4,025 (21)	12,075 (21)	0%
Two	4,919 (24)	127,257 (21)	7%	4,490 (24)	13,796 (24)	1%
Three (middle)	3,923 (19)	119,207 (20)	2%	3,711 (19)	11,072 (19)	0%
Four	3,854 (19)	118,085 (20)	2%	3,622 (19)	10,752 (19)	1%
Five (highest)	3,362 (16)	120,476 (20)	9%	3,185 (17)	9,404 (16)	1%
Rural Residence	162 (1)	87,397 (14)	53%	154 (1)	630 (1)	3%
Long-term Care Facility	483 (2)	13970 (2)	0.2%	402 (2)	827 (1)	5%
<b>Year of Cohort Entry ‡</b>						
2002–2003	3,183 (15)	110,941 (18)	8%	3052 (16)	9,156 (16)	0%
2004–2005	3,663 (18)	120,927 (20)	6%	3,443 (18)	10,329 (18)	0%
2006–2007	4,007 (19)	110,266 (18)	3%	3,616 (19)	10,848 (19)	0%
2008–2009	3,838 (19)	106,714 (18)	3%	3,473 (18)	10,410 (18)	0%
2010–2011	3,962 (19)	102,268 (17)	6%	3,656 (19)	10,968 (19)	0%
2012	1,945 (9)	54,090 (9)	2%	1,796 (9)	5,388 (9)	0%
<b>Health care use §</b>						
Hospital discharge in the two days prior	897 (4)	60,918 (10)	22%	822 (4)	2,332 (4)	1%
<b>Cardiologist visits</b>						
0	13,348 (65)	334,923 (55)	19%	12,443 (65)	36,689 (64)	2%
1	1,210 (6)	32,991 (5)	2%	1,120 (6)	3,573 (6)	2%
2	1,065 (5)	39,043 (6)	5%	972 (5)	3,287 (6)	3%
≥3	4,975 (24)	198,218 (33)	19%	4,498 (24)	13,550 (24)	0%
<b>Family physician visits</b>						
0	582 (3)	21,030 (3)	4%	565 (3)	1,933 (3)	2%
1	436 (2)	18,127 (3)	6%	423 (2)	1,638 (3)	4%
2	609 (3)	23,206 (4)	5%	577 (3)	2,279 (4)	5%
≥3	18,971 (92)	542,812 (90)	8%	17,468 (92)	51,249 (90)	7%

(Continued)

Table 1. (Continued)

		Unmatched			Matched		
		Chinese	Non-Chinese	Standardized Difference *	Chinese	Non-Chinese	Standardized Difference *
		N = 20,598 (%)	N = 605,175 (%)		N = 19,033 (%)	N = 57,099 (%)	
<b>Hospitalizations</b>							
	0	16,813 (82)	414,679 (69)	31%	15,551 (82)	45,896 (80)	3%
	1	2,569 (12)	116,362 (19)	19%	2,364 (12)	8,053 (14)	5%
	2	841 (4)	45,439 (8)	15%	7,82 (4)	2,287 (4)	1%
	≥3	375 (2)	28,695 (5)	16%	3,36 (2)	863 (2)	2%
<b>ER visits</b>							
	0	17,044 (83)	382,661 (63)	45%	15,750 (83)	46,171 (81)	5%
	1	2,523 (12)	132,761 (22)	26%	2,340 (12)	8,202 (14)	6%
	2	678 (3)	47,828 (8)	20%	635 (3)	1,930 (3)	0%
	≥3	353 (2)	41,925 (7)	26%	308 (2)	796 (1)	2%
		283 (1)	23,632 (4)	16%	275 (1)	769 (1)	1%
		1,067 (5)	43,793 (7)	9%	993 (5)	3,022 (5)	0%
		1,941 (9)	85,821 (14)	15%	1,823 (10)	5,191 (9)	2%
		3,503 (17)	13,4553 (22)	13%	3,160 (17)	9,211 (16)	1%
		1,099 (5)	50,967 (8)	12%	1,049 (6)	3,087 (5)	1%
		17,106 (83)	444,422 (73)	23%	15,722 (83)	47,540 (83)	2%
<b>Co-morbidities   </b>							
<b>Charlson comorbidity index #</b>							
	0	17,927 (87)	468,821 (77)	25%	16,652 (87)	49,963 (88)	0%
	1	1,176 (6)	60,024 (10)	16%	1,108 (6)	3,314 (6)	0%
	2	742 (4)	38,237 (6)	13%	671 (4)	1,976 (3)	0%
	≥3	753 (4)	38,093 (6)	12%	602 (3)	1,846 (3)	0%
<b>Johns Hopkins ACG score</b>							
	0–4	10,312 (50)	260,430 (43)	14%	9,718 (51)	29,795 (52)	2%
	5–9	8,697 (42)	272,385 (45)	6%	7,912 (42)	23,640 (41)	0%
	10–14	1,497 (7)	65,918 (11)	13%	1,329 (7)	3,472 (6)	4%
	≥15	92 (0.4)	6,442 (1)	7%	74 (0.4)	192 (0.3)	1%
		1,232 (6)	34,428 (6)	1%	732 (4)	2,196 (4)	0%
		1,297 (6)	61,331 (10)	14%	1,207 (6)	3,772 (7)	1%
		3,309 (16)	175,078 (29)	31%	2,885 (15)	8,655 (15)	0%

(Continued)

Table 1. (Continued)

	Unmatched			Matched		
	Chinese	Non-Chinese	Standardized Difference *	Chinese	Non-Chinese	Standardized Difference *
	N = 20,598 (%)	N = 605,175 (%)		N = 19,033 (%)	N = 57,099 (%)	
Peripheral vascular disease	70 (0.3)	9,010 (1)	12%	53 (0.3)	380 (1)	6%
Diabetes‡‡	5,356 (26)	134,439 (22)	9%	4,813 (25)	14,583 (26)	1%
Chronic liver disease	1,263 (6)	12,219 (2)	21%	762 (4)	2,209 (4)	1%
Stroke/TIA	601 (3)	26,045 (4)	7%	559 (3)	1,329 (2)	4%
Heart failure	963 (5)	61,069 (10)	21%	834 (4)	2,544 (4)	0%
Sepsis	260 (1)	10,025 (2)	3%	220 (1)	576 (1)	1%
Hypertension	11,360 (55)	383,613 (63)	17%	10,291 (54)	31,381 (55)	2%
Angina	1,669 (8)	114,145 (19)	32%	1,587 (8)	4,356 (8)	3%
Arrhythmia	580 (3)	39,899 (7)	18%	508 (3)	1,564 (3)	0%
<b>Medications §§</b>						
ACE Inhibitors	5,066 (25)	253,669 (42)	37%	4,838 (25)	14,004 (25)	2%
ARBs	5,445 (26)	95,466 (16)	26%	4,572 (24)	14,187 (25)	2%
Beta blockers	5,120 (25)	198,080 (33)	17%	4,616 (24)	13,421 (24)	2%
Calcium channel blockers	6,969 (34)	170,265 (28)	12%	6,047 (32)	18,584 (33)	2%
Loop diuretics	873 (4)	60,254 (10)	22%	718 (4)	2,378 (4)	2%
Potassium sparing diuretics	506 (2)	33,360 (6)	16%	477 (3)	1,475 (3)	0%
NSAIDs	3,216 (16)	108,378 (18)	6%	2,964 (16)	10,176 (18)	6%
Thiazide diuretics	2,576 (13)	121,829 (20)	21%	2,438 (13)	7,558 (13)	1%
Anticholinergics	543 (3)	27,886 (5)	11%	483 (3)	1,577 (3)	1%
Corticosteroids	892 (4)	29,894 (5)	3%	819 (4)	2,364 (4)	1%
Beta2-agonists	1,307 (6)	62,033 (10)	14%	1,203 (6)	3,757 (7)	1%
Amiodarone	150 (1)	9,320 (2)	8%	133 (1)	343 (1)	1%
Cyclosporine	13 (0.1)	209 (0.0)	1%	9 (0.0)	22 (0.0)	0%
Warfarin	796 (4)	47,906 (8)	17%	721 (4)	2,114 (4)	0%
Antidepressants	901 (4)	65,249 (11)	24%	846 (4)	2,570 (5)	0%
Levothyroxine	1,155 (6)	73,777 (12)	23%	1,098 (6)	3,330 (6)	0%
Quetiapine	67 (0.3)	3,803 (0.6)	4%	63 (0.3)	231 (0.4)	1%
Risperidone	80 (0.4)	3,962 (0.7)	4%	69 (0.4)	239 (0.4)	1%
Olanzapine	67 (0.3)	3,252 (0.6)	3%	62 (0.3)	217 (0.4)	1%
<b>Statin daily dose, median [IQR], mg</b>						
Atorvastatin	10 [10–20]	10 [10–20]		10 [10–20]	10 [10–20]	
Rosuvastatin	5 [5–10]	10 [10–10]		5 [5–10]	5 [5–10]	

(Continued)

Table 1. (Continued)

	Unmatched			Matched		
	Chinese	Non-Chinese	Standardized Difference *	Chinese	Non-Chinese	Standardized Difference *
	N = 20,598 (%)	N = 605,175 (%)		N = 19,033 (%)	N = 57,099 (%)	
Simvastatin	20 [10–20]	20 [10–40]		20 [10–20]	20 [10–20]	
<b>Rosuvastatin starting dose     </b>						
0 - <5 mg/day	195 (0.9)	2,018 (0.3)		158 (0.9)	298 (0.5)	
5 - <10 mg/day	3,594 (17)	43,137 (7)		3,075 (16.2)	8,350 (14.6)	
10 - <15 mg/day	11,128 (54)	306,722 (51)		10,491 (55.1)	31,003 (54.3)	
15 - <20 mg/day	50 (0.2)	1,103 (0.2)		47 (0.3)	96 (0.2)	
≥20 mg/day	5,631 (27)	252,195 (42)		5262 (27.7)	17,352 (30.4)	

**Abbreviations:** TIA, transient ischemic attack; ACE, angiotensin-converting enzyme; ACG, adjusted clinical groups; ARB, angiotensin II receptor blocker; NSAID, nonsteroidal anti-inflammatory drug; SD, standard deviation; IQR, interquartile range.

\* Standardized differences are less sensitive to sample size than traditional hypothesis tests. They provide a measure of the difference between groups divided by the pooled standard deviation; a value greater than 10% is interpreted as a meaningful difference between the groups.

† Income was categorized into fifths of average neighborhood income on the index date.

‡ The date of cohort entry is also referred to as the index date.

§ Assessed by administrative database codes in the previous 1 year (unless otherwise specified).

|| Assessed by administrative database codes in the previous 3 years.

# Charlson comorbidity index [34, 35] was calculated using 3 years of hospitalization data. No prior hospitalizations received a score of 0.

\*\* Major cancers include esophagus, lung, bowel, liver, pancreas, breast, male/female reproductive organs, as well as leukemia and lymphomas.

†† Coronary artery disease includes both diagnoses of angina and coronary artery revascularization.

‡‡ Assessed using prescriptions for diabetic medications.

§§ Assessed in the previous 120 days.

|||| Health Canada recommends a starting rosuvastatin dose of 5mg for individuals of Asian ethnicity.

doi:10.1371/journal.pone.0150990.t001

additional information became available questioning whether acute kidney injury is truly a potential adverse event of a higher serum statin concentration [38, 39]. While liver injury is a historic concern linked to statin therapy, recent studies have not confirmed this association and regulatory bodies no longer identify it as a major concern [40, 41]; thus we decided *a priori* not to include it as a study outcome. Since up to 25 unique diagnostic codes can be assigned per hospitalization, patients with multiple diagnosis codes were accounted for in the assessment of each hospitalization outcome. However, the overall incidence is underestimated due to a spectrum bias in hospital diagnosis coding, particularly for milder forms of conditions. For example, the incidence of acute kidney injury can be underestimated up to five-fold when assessed by diagnostic codes compared to laboratory values [27].

### Statistical Analyses

We compared baseline characteristics of Chinese and non-Chinese using standardized differences [42]. This metric describes differences between group means relative to the pooled standard deviation and is considered a clinically meaningful difference if greater than 10%. We used Cox proportional hazard regression analyses to estimate hazard ratios and 95% confidence intervals for each of our three outcomes (stratifying the models on matched sets). We considered a two-tailed p-value of less than 0.05 to be statistically significant. In the follow-up



**Table 2. Statin-associated adverse outcomes in Chinese and non-Chinese (referent).**

	Number of Events (rate per 10,000 person-years)		Hazard Ratio (95% CI)	P-value
	Chinese (n = 19,033)	Non-Chinese (n = 57,099)		
<b>Rhabdomyolysis *</b>	16 (6.6)	79 (12.8)	0.61 (0.28 to 1.34)	0.22
<b>Incident diabetes †</b>	182 (267.5)	475 (252.4)	1.02 (0.80 to 1.30)	0.89
<b>Acute kidney injury *</b>	215 (89.2)	556 (90.8)	0.90 (0.72 to 1.13)	0.36
<b>All-cause mortality ‡</b>	324 (133.5)	965 (156.4)	0.88 (0.74 to 1.05)	0.17

**Abbreviations:** confidence interval (CI)

\* Outcomes assessed with hospital diagnosis codes. This underestimates the true event rate because these codes have high specificity but low sensitivity.

† Diabetes diagnoses assessed with the Ontario Diabetes Database; only matched sets where none of the users had evidence of baseline diabetes were included in this analysis (6,170 Chinese, 18,510 non-Chinese).

‡ All-cause mortality assessed with vital status field of Registered Persons Database of Ontario.

doi:10.1371/journal.pone.0150990.t002

for these three outcomes, we censored the observation period at the time of death, statin discontinuation, or end of database records (March 31, 2013). In the primary analysis, statin discontinuation was defined by no evidence of a repeat prescription for the same statin within 30 days following the end of the previous prescription day supply. In our data sources, any deaths, dispensed medications, and associated dates are recorded with high accuracy [22, 43]. We repeated the primary analysis in subgroups defined by statin type (atorvastatin, rosuvastatin, or simvastatin) and statin dose (high vs. low, as previously defined). We conducted all statistical analyses using SAS version 9.3 (SAS Institute, Cary, North Carolina).

## Results

### Baseline Characteristics and Follow-up Observation Period

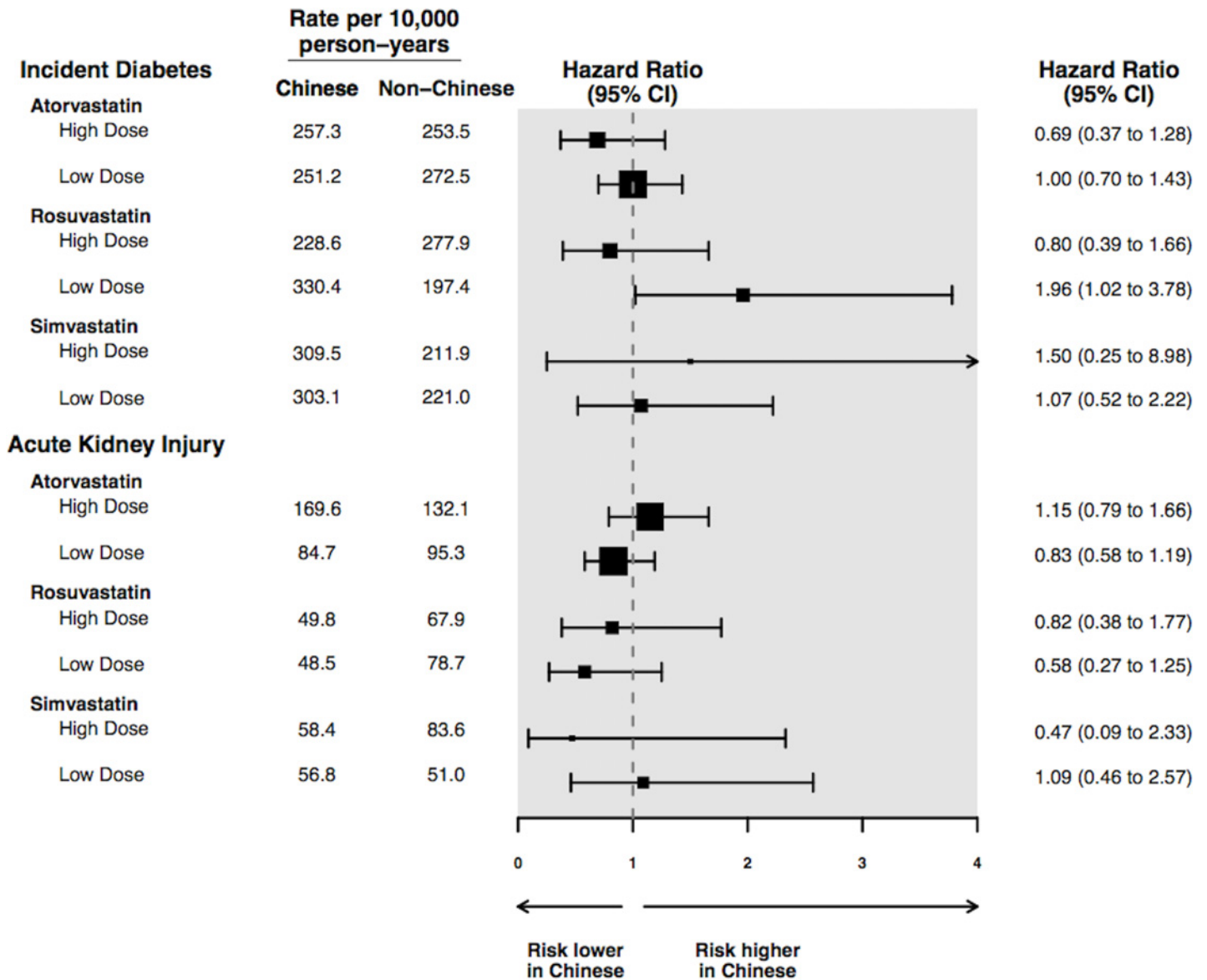
Cohort selection is presented in Fig A in [S1 File](#). We identified 625,363 new statin users aged 66 or older who were Chinese (n = 20,598) or non-Chinese (n = 604,765). After 1:3 matching we retained 76,132 individuals (19,033 Chinese, 57,099 non-Chinese). The baseline characteristics of patients before and after matching are presented in [Table 1](#). Before matching, those who were Chinese exhibited significant differences in several baseline characteristics and were generally healthier compared to non-Chinese. While Chinese users were more likely to be prescribed lower doses of rosuvastatin than non-Chinese ([Table 1](#)), more than half of Chinese were given a starting dose higher than 5 mg per day for each year of the study period, which is contrary to the recommendation from Health Canada and US Food and Drug Administration on rosuvastatin dosing in Asians released in 2005 (Fig B in [S1 File](#)). Matching resulted in two groups similar in age, sex, year of statin prescription, statin type, statin dose, baseline healthcare usage, and multiple other baseline characteristics ([Table 1](#)).

The mean length of follow-up was 1.1 years and was similar between the groups (1.3 years in Chinese, 1.1 years in non-Chinese; maximum 10.8 years). The total person-years of follow-up was 85,893 (24,259 Chinese, 61,634 non-Chinese). Statin discontinuation during follow-up was lower for Chinese compared to non-Chinese (Table D in [S1 File](#)).

### Outcomes

Study outcomes are shown in [Table 2](#). Results are expressed in events per 10,000 person-years, as well as in hazard ratios with patients of non-Chinese ethnicity serving as the referent group. There was no significant difference between Chinese vs. non-Chinese in the risk of





**Fig 1. Subgroup analysis by statin type and dose for hospitalization with acute kidney injury and a diagnosis of diabetes mellitus \*†.** \* High dose defined as  $\geq 10$  mg rosuvastatin,  $\geq 20$  mg atorvastatin, or  $\geq 40$  mg simvastatin; other values classified as low dose. † To comply with privacy regulations numerators of 1 to 5 cannot be reported individually; for this reason we simply present the rate per 10,000 person-years, without additional information on the number of events in each subgroup.

doi:10.1371/journal.pone.0150990.g001

hospitalization with rhabdomyolysis (hazard ratio [HR] 0.61, 95% confidence interval [CI] 0.28 to 1.34,  $p = 0.22$ ), incident diabetes (HR 1.02, 95% CI 0.80 to 1.30,  $p = 0.89$ ), hospitalization with acute kidney injury (HR 0.90, 95% CI 0.72 to 1.13,  $p = 0.36$ ), or all-cause mortality (HR 0.88, 95% CI 0.74 to 1.05,  $p = 0.17$ ). We tested the proportionality assumption for all four outcomes using time-dependent covariates in the Cox proportional hazards regression model. The proportionality assumption was not violated for any of the outcomes, with all  $p$ -values greater than 0.05. Additionally, we treated death as a competing risk and the results did not differ (Table E in S1 File). The results of subgroup analyses are shown in Fig 1. The risk of rhabdomyolysis was not assessed in subgroups because there were too few events for meaningful analysis. Statin type and dose did not significantly modify the association between Chinese

ethnicity and other outcomes. While there was a higher risk of incident diabetes in Chinese patients taking a lower dose of rosuvastatin, the interaction of incident diabetes with higher dose rosuvastatin was not statistically significant ( $p = 0.07$ ).

## Additional analyses

We conducted several additional analyses after knowledge of the primary results. First, if prescribing physicians titrated the dose of statin differently among Chinese and non-Chinese (to clinical effects such as lipid level), this could abrogate the effect of ethnicity. To assess this we examined the change in statin dose over the course of follow-up and expressed the change standardized to the initial dose ( $[\text{final dose} - \text{initial dose in follow-up}] / \text{initial dose} \times 100$ ). We observed very little change in dose over the follow-up in both Chinese and non-Chinese groups: the median (interquartile range) change in dose for both groups was 0 (0 to 0). We also recorded the frequency and direction of dose changes within the cohort. Doses were stable in 84.0% in Chinese and 86.8% in non-Chinese, and increased in 11.5% of Chinese and 10.4% of non-Chinese.

Second, although we observed no higher rate of statin discontinuation in Chinese versus non-Chinese, it is possible that outpatient blood monitoring differed in the two groups and influenced outcomes. Outpatient blood testing (which is a billable service to the universal provincial healthcare plan) is accurately recorded in our data sources (but values are not available). We observed no significant difference between the two groups in the proportion of those with creatine kinase, serum creatinine, serum glucose, or glycated hemoglobin testing during the follow-up periods (Table F in [S1 File](#)).

Third, in the primary analysis statin discontinuation was defined as absence of a prescription renewal within 30 days. In an additional analysis, we lengthened this definition to 100 days (which is the maximum day supply dispensed for a given prescription in Ontario). While the mean follow-up increased to 2.5 years, there remained no higher risk of any of our study outcomes in Chinese compared to non-Chinese (Table G in [S1 File](#)).

## Discussion

Based on evidence of higher blood levels of a given statin in Asians, regulatory agencies such as Health Canada and the US Food and Drug Administration recommend a lower dose of statins for Asians compared to non-Asians. Although we showed that this recommendation is not frequently followed for Chinese patients in routine care, we observed no higher risk of statin toxicity in Chinese than matched non-Chinese older adults with similar indicators of baseline health.

What is the basis for the recommended statin reduction in Chinese? Historically this was attributed to the smaller body size and weight of Asians, as well as environmental and dietary differences [3, 15], but pharmacokinetic modeling and clinical studies do not support these as causative factors [44]. In recent years, a growing number of pharmacogenomic studies describe significant differences between Chinese and non-Chinese in the frequencies of common genetic polymorphisms linked to statin metabolism and transport [12]. For example, the frequency of the single nucleotide polymorphism (SNP) c.421 C>A in the *ABCG2* gene (encoding an efflux drug transporter) is much higher in the Chinese population (35% in Chinese versus 15% in Caucasians), which is associated with increased systemic exposure to rosuvastatin [44]. Interestingly, the presence of these genetic polymorphisms have also been linked to enhanced lipid lowering effect, likely due to higher hepatic concentration of substrate statins [45].

A higher blood concentration with a given dose of statin in Chinese versus non-Chinese is clear [13–15]. However, the risk of severe statin-associated adverse events associated with

Chinese ethnicity remains unclear. In many large randomized controlled trials conducted in both Asian and Western countries, amongst Asians there is no reported difference in the safety or tolerability of a lower compared to higher dose of statin [3, 41, 46–48]. Rather, above-standard doses of statins provided additional cholesterol-lowering benefit in Asians [14]. Regulatory agencies should review available data, including findings from our study, to see if a change in their statin dosing recommendations for people of Chinese ethnicity (and Asian ethnicity in general) is warranted.

Our study's findings must be interpreted in the context of its limitations. First, we identified patients as Chinese or non-Chinese based on a list of uniquely Chinese surnames, rather than self-reported ethnicity or genetic assessment. While the surname algorithm has been validated and used in other health outcome studies, misclassification is possible. Second, some outcomes were assessed with hospital diagnosis codes, and milder forms of adverse events may have been missed. In HPS2-THRIVE, a large placebo-controlled trial of 25,673 high-risk patients, Chinese patients taking simvastatin 40 mg had a higher absolute risk of myopathy than patients in Europe [49]. The outcome in HPS2-THRIVE included milder symptoms of myopathy, which differs from the focus in this study (i.e. serious statin-associated adverse events that resulted in hospitalization). Third, although our study outcomes were chosen based on evidence from previous literature, we appreciate that some outcomes remain controversial in their association with statin use. Fourth, it is important to note that risk profiling based on ethnicity may not generalize well to the care of an individual. Even within a population or ethnic group, there exist a mixture of genotypes that serve as determinants of drug exposure and response [1]. Other inter-individual factors that are not well characterized may also affect overall drug responses; for example in this study we did not have information on body composition or baseline laboratory values, nor did we account for dietary differences and the use of non-prescription drugs. Some common ingredients found in traditional Chinese medicine and the Chinese diet, such as red yeast rice, may adversely interact with statins [50, 51]. Fifth, it is difficult to objectively measure and compare drug compliance in retrospective observational studies. While we were able to compare the rates of statin discontinuation (which was lower in Chinese vs. non-Chinese), the exact reasons for discontinuation were unclear. Finally, we only studied older adults given our available data. However, those who are younger (and often healthier) would be expected to have lower rates of statin toxicity, making it more difficult to observe a meaningful difference between Chinese and non-Chinese patients [52].

## Conclusion

We observed no higher risk of serious statin toxicity in Chinese than matched non-Chinese older adults with similar indicators of baseline health. Regulatory agencies should review available data to decide if a change in their statin dosing recommendations for people of Chinese ethnicity is warranted.

## Supporting Information

**S1 File. Supporting Information.** Table A. STROBE checklist. Table B. Coding definitions for demographic and comorbid conditions. Table C. Coding definitions for hospitalization with rhabdomyolysis, incident diabetes, and hospitalization with acute kidney injury. Table D. Reasons the observation time was censored amongst the matched cohort. Table E. Statin-associated adverse outcomes in Chinese and non-Chinese (referent) adjusting for competing risk of death. Table F: Outpatient blood testing during follow-up. Table G. Statin-associated adverse outcomes in Chinese and non-Chinese (referent) with at least 100 days grace period for subsequent statin prescription. Fig A. Flow diagram of cohort selection. Fig B. Total number of

Chinese newly dispensed rosuvastatin each year and proportion with  $\geq 10\text{mg/day}$  starting dose.  
(DOC)

## Author Contributions

Conceived and designed the experiments: DQL JLF EM SD AXG RBK RAH BRS MAW AOM JVT SA. Performed the experiments: DQL JLF EM SD AXG. Analyzed the data: EM SD. Contributed reagents/materials/analysis tools: AXG. Wrote the paper: DQL AXG.

## References

1. Yasuda S, Zhang L, Huang S. The role of ethnicity in variability in response to drugs: focus on clinical pharmacology studies. *Clinical Pharmacology & Therapeutics*. 2008; 84(3):417–423.
2. DeGorter M, Xia C, Yang J, Kim R. Drug Transporters in Drug Efficacy and Toxicity. *Annual Review of Pharmacology & Toxicology*. 2012; 52(1):249–273.
3. Zhou H, Koshakji R, Silberstein D, Wilkinson G, Wood A. Altered sensitivity to and clearance of propranolol in men of Chinese descent as compared with American whites. *The New England Journal of Medicine*. 1989; 320(9):565–70. PMID: [2536896](#)
4. Wu C, Sy R, Tanphaichitr V, Hin A, Suyono S, Lee Y. Comparing the efficacy and safety of atorvastatin and simvastatin in Asians with elevated low-density lipoprotein-cholesterol—a multinational, multicenter, double-blind study. *Journal of the Formosan Medical Association*. 2002; 101(7):478–487. PMID: [12353340](#)
5. Huang S, Temple R. Is this the drug or dose for you? Impact and consideration of ethnic factors in global drug development, regulatory review, and clinical practice. *Clinical Pharmacology and Therapeutics*. 2008; 84(3):287–295. doi: [10.1038/clpt.2008.144](#) PMID: [18714314](#)
6. Ioannidis J. More than a billion people taking statins? Potential implications of the new cardiovascular guidelines. *JAMA*. 2014; 311(5):463–464. doi: [10.1001/jama.2013.284657](#) PMID: [24296612](#)
7. Graham D, Staffa J, Shatin D, Andrade S, Schech S, La Grenade L, et al. Incidence of hospitalized rhabdomyolysis in patients treated with lipid-lowering drugs. *JAMA*. 2004; 292(21):2585–2590. PMID: [15572716](#)
8. Dormuth C, Hemmelgarn B, Paterson J, James M, Teare G, Raymond C, et al; Canadian Network for Observational Drug Studies. Use of high potency statins and rates of admission for acute kidney injury: multicenter, retrospective observational analysis of administrative databases. *BMJ: British Medical Journal*. 2013;346.
9. Mancini G, Baker S, Bergeron J, Fitchett D, Frohlich J, Genest J, et al. Diagnosis, prevention, and management of statin adverse effects and intolerance: proceedings of a Canadian Working Group Consensus Conference. *Canadian Journal of Cardiology*. 2011; 27(5):635–662. doi: [10.1016/j.cjca.2011.05.007](#) PMID: [21963058](#)
10. Carter A, Gomes T, Camacho X, Juurlink D, Shah B, Mamdani M. Risk of incident diabetes among patients treated with statins: population based study. *BMJ: British Medical Journal*. 2013; 346.
11. Brault M, Ray J, Gomez Y, Mantzoros C, Daskalopoulou S. Statin treatment and new-onset diabetes: A review of proposed mechanisms. *Metabolism*. 2014; 63(6):735–745. doi: [10.1016/j.metabol.2014.02.014](#) PMID: [24641882](#)
12. Wang P. Statin dose in Asians: is pharmacogenetics relevant?. *Pharmacogenomics*. 2011; 12(11):1605–1615. doi: [10.2217/pgs.11.98](#) PMID: [22044416](#)
13. Liao J. Safety and efficacy of statins in Asians. *The American Journal of Cardiology*. 2007; 99(3):410–414. PMID: [17261409](#)
14. Lee E, Ryan S, Birmingham B, Zalikowski J, March R, Ambrose H, et al. Rosuvastatin pharmacokinetics and pharmacogenetics in white and Asian subjects residing in the same environment. *Clinical Pharmacology & Therapeutics*. 2005; 78(4):330–341.
15. Leiter L, Fitchett D, Gilbert R, Gupta M, Mancini G, McFarlane P, et al. Identification and Management of Cardiometabolic Risk in Canada: A Position Paper by the Cardiometabolic Risk Working Group (Executive Summary). *Canadian Journal of Cardiology*. 2011; 27(2):124–131. doi: [10.1016/j.cjca.2011.01.016](#) PMID: [21459258](#)
16. US Food and Drug Administration. FDA Public Health Advisory for Crestor (rosuvastatin). Available: <http://www.fda.gov/Drugs/DrugSafety/PostmarketDrugSafetyInformationforPatientsandProviders/ucm051756.htm>. Accessed April 5, 2015.

17. Gupta M, Braga M, Teoh H, Tsigoulis M, Verma S. Statin effects on LDL and HDL cholesterol in South Asian and white populations. *The Journal of Clinical Pharmacology*. 2009; 49(7):831–837. doi: [10.1177/0091270009334376](https://doi.org/10.1177/0091270009334376) PMID: [19398601](https://pubmed.ncbi.nlm.nih.gov/19398601/)
18. Government of Canada. Chinese in the Canadian Population. Available: [http://www.labour.gc.ca/eng/standards\\_equity/eq/pubs\\_eq/eedr/2006/profiles/page07.shtml#chinese](http://www.labour.gc.ca/eng/standards_equity/eq/pubs_eq/eedr/2006/profiles/page07.shtml#chinese). Accessed July 17, 2015.
19. US Census Bureau. Race Reporting for the Asian Population by Selected Categories: 2010. Available: [http://factfinder2.census.gov/faces/tableservices/jsf/pages/productview.xhtml?pid=DEC\\_10\\_SF1\\_QTP8&prodType=table](http://factfinder2.census.gov/faces/tableservices/jsf/pages/productview.xhtml?pid=DEC_10_SF1_QTP8&prodType=table). Accessed March 6, 2015.
20. Statistics Canada. Population by sex and age group, by province and territory (Number, both sexes). Available: <http://www.statcan.gc.ca/tables-tableaux/sum-som/01/cst01/demo31a-eng.htm>. Accessed April 1, 2015.
21. Von Elm E, Altman D, Egger M, Pocock S, Gotsche P, Vandenbroucke J. The Strengthening the Reporting of Observational Studies in Epidemiology (STROBE) statement: guidelines for reporting observational studies. *Preventive Medicine*. 2007; 45(4):247–251. PMID: [17950122](https://pubmed.ncbi.nlm.nih.gov/17950122/)
22. Levy A, O'Brien B, Sellors C, Grootendorst P, Willison D. Coding accuracy of administrative drug claims in the Ontario Drug Benefit database. *The Canadian Journal of Clinical Pharmacology*. 2002; 10(2):67–71.
23. Hux JE, Ivis F, Flintoft V, Bica A. Diabetes in Ontario: determination of prevalence and incidence using a validated administrative data algorithm. *Diabetes Care* 2002; 25:512–6. PMID: [11874939](https://pubmed.ncbi.nlm.nih.gov/11874939/)
24. Patel A, Shariff S, Bailey D, Juurlink D, Gandhi S, Mamdani M, et al. Statin Toxicity From Macrolide Antibiotic Co-prescription: A Population-Based Cohort Study. *Annals of Internal Medicine*. 2013; 158(12):869–876. doi: [10.7326/0003-4819-158-12-201306180-00004](https://doi.org/10.7326/0003-4819-158-12-201306180-00004) PMID: [23778904](https://pubmed.ncbi.nlm.nih.gov/23778904/)
25. Zhao Y, Weir M, Manno M, Cordy P, Gomes T, Hackam D, et al. New Fibrate Use and Acute Renal Outcomes in Elderly Adults: A Population-Based Study. *Annals of Internal Medicine*. 2012; 156(8):560–569. doi: [10.7326/0003-4819-156-8-201204170-00003](https://doi.org/10.7326/0003-4819-156-8-201204170-00003) PMID: [22508733](https://pubmed.ncbi.nlm.nih.gov/22508733/)
26. Shih A, Weir M, Clemens K, Yao Z, Gomes T, Mamdani M, et al. Oral bisphosphonate use in the elderly is not associated with acute kidney injury. *Kidney International*. 2012; 82(8):903–908. doi: [10.1038/ki.2012.227](https://doi.org/10.1038/ki.2012.227) PMID: [22695327](https://pubmed.ncbi.nlm.nih.gov/22695327/)
27. Molnar A, Coca S, Devereaux P, Jain A, Kitchlu A, Luo J, et al. Statin use associates with a lower incidence of acute kidney injury after major elective surgery. *Journal of the American Society of Nephrology*. 2011; 22(5):939–946. doi: [10.1681/ASN.2010050442](https://doi.org/10.1681/ASN.2010050442) PMID: [21493769](https://pubmed.ncbi.nlm.nih.gov/21493769/)
28. Jain A, Cuerden M, McLeod I, Hemmelgarn B, Akbari A, Tonelli M, et al. Reporting of the estimated glomerular filtration rate was associated with increased use of angiotensin-converting enzyme inhibitors and angiotensin-II receptor blockers in CKD. *Kidney International*. 2012; 81(12):1248–1253. doi: [10.1038/ki.2012.18](https://doi.org/10.1038/ki.2012.18) PMID: [22437415](https://pubmed.ncbi.nlm.nih.gov/22437415/)
29. Gandhi S, Fleet J, Bailey D, McArthur E, Wald R, Rehman F, et al. Calcium-Channel Blocker—Clarithromycin Drug Interactions and Acute Kidney Injury. *JAMA*. 2013; 310(23):2544–2553. doi: [10.1001/jama.2013.282426](https://doi.org/10.1001/jama.2013.282426) PMID: [24346990](https://pubmed.ncbi.nlm.nih.gov/24346990/)
30. Li D, Kim R, McArthur E, Fleet J, Bailey D, Juurlink D, et al. Risk of adverse events among older adults following co-prescription of clarithromycin and statins not metabolized by cytochrome P450 3A4. *Canadian Medical Association Journal*. 2015; 187(3):174–180. doi: [10.1503/cmaj.140950](https://doi.org/10.1503/cmaj.140950) PMID: [25534598](https://pubmed.ncbi.nlm.nih.gov/25534598/)
31. Shah B, Chiu M, Amin S, Ramani M, Sadry S, Tu J. Surname lists to identify South Asian and Chinese ethnicity from secondary data in Ontario, Canada: a validation study. *BMC: Medical Research Methodology*. 2010; 10(1):42.
32. Statistics Canada. Visible minority population, by province and territory (2006 Census) (Quebec, Ontario, Manitoba, Saskatchewan). Available: <http://www.statcan.gc.ca/tables-tableaux/sum-som/01/cst01/demo52b-eng.htm>. Accessed July 17, 2015.
33. US Food and Drug Administration. Drug Development and Drug Interactions: Table of Substrates, Inhibitors and Inducers. Available: <http://www.fda.gov/drugs/developmentapprovalprocess/developmentresources/druginteractionslabeling/ucm093664.htm#potency>. Accessed April 5, 2015.
34. Austin P. An introduction to propensity score methods for reducing the effects of confounding in observational studies. *Multivariate Behavioral Research*. 2011; 46(3):399–424. PMID: [21818162](https://pubmed.ncbi.nlm.nih.gov/21818162/)
35. Charlson M, Pompei P, Ales K, MacKenzie C. A new method of classifying prognostic comorbidity in longitudinal studies: development and validation. *Journal of Chronic Diseases*. 1987; 40(5):373–383. PMID: [3558716](https://pubmed.ncbi.nlm.nih.gov/3558716/)
36. Quan H, Sundararajan V, Halfon P, Fong A, Burnand B, Luthi J, et al. Coding algorithms for defining comorbidities in ICD-9-CM and ICD-10 administrative data. *Medical Care*. 2005; 43(11):1130–1139. PMID: [16224307](https://pubmed.ncbi.nlm.nih.gov/16224307/)



37. Reid R, MacWilliam L, Verhulst L, Roos N, Atkinson M. Performance of the ACG case-mix system in two Canadian provinces. *Medical Care*. 2001; 39(1):86–99. PMID: [11176546](#)
38. Bangalore S, Fayyad R, Hovingh G, Laskey R, Vogt L, DeMicco D, et al; Treating to New Targets Steering Committee and Investigators. Statin and the risk of renal-related serious adverse events: Analysis from the IDEAL, TNT, CARDS, ASPEN, SPARCL, and other placebo-controlled trials. *Am J Cardiol*. 2014; 113(12):2018–20. doi: [10.1016/j.amjcard.2014.03.046](#) PMID: [24793673](#)
39. Lai C, Chou H, Chan K, Lai M. Effects of Atorvastatin and Rosuvastatin on Renal Function in Patients With Type 2 Diabetes Mellitus. *The American Journal of Cardiology*. 2015; 115(5):619–624. doi: [10.1016/j.amjcard.2014.12.009](#) PMID: [25591893](#)
40. Chen G, Hsiao F, Dong Y, Shen L, Wu F. Statins and the risk of liver injury: a population-based case-control study. *Pharmacoepidemiology and Drug Safety*. 2014; 23(7):719–725. doi: [10.1002/pds.3646](#) PMID: [24829162](#)
41. US Food and Drug Administration. FDA Expands Advice on Statin Risks. Available: <http://www.fda.gov/forconsumers/consumerupdates/ucm293330.htm#1>. Accessed August 6, 2014.
42. Austin P. Using the standardized difference to compare the prevalence of a binary variable between two groups in observational research. *Communications in Statistics-Simulation and Computation*. 2009; 38(6):1228–1234.
43. Jha P, Deboer D, Sykora K, Naylor C. Characteristics and mortality outcomes of thrombolysis trial participants and nonparticipants: a population-based comparison. *Journal of the American College of Cardiology*. 1996; 27 (6): 1335–1342. PMID: [8626941](#)
44. DeGorter M, Tirona R, Schwarz U, Choi Y, Dresser G, Suskin N, et al. Clinical and Pharmacogenetic Predictors of Circulating Atorvastatin and Rosuvastatin Concentrations in Routine Clinical Care. *Circulation: Cardiovascular Genetics*. 2013; 6(4):400–408.
45. Bailey K, Romaine S, Jackson B, Farrin A, Efthymiou M, Barth J, et al; SPACE ROCKET Trial Group. Hepatic Metabolism and Transporter Gene Variants Enhance Response to Rosuvastatin in Patients With Acute Myocardial Infarction: The GEOSTAT-1 Study. *Circulation: Cardiovascular Genetics*. 2010; 3(3):276–285.
46. Morales D, Chung N, Zhu J, Sangwatanaroj S, Yin W, Lee K, et al. Efficacy and safety of simvastatin in Asian and non-Asian coronary heart disease patients: a comparison of the GOALLS and STATT studies. *Current Medical Research and Opinion*. 2004; 20(8):1235–1243. PMID: [15324526](#)
47. Saito Y, Goto Y, Dane A, Strutt K, Raza A. Randomized dose-response study of rosuvastatin in Japanese patients with hypercholesterolemia. *Journal of Atherosclerosis and Thrombosis*. 2002; 10(6):329–336.
48. Wang K, Ting C. A randomized, double-blind, placebo-controlled, 8-week study to evaluate the efficacy and safety of once daily atorvastatin (10 mg) in patients with elevated LDL-cholesterol. *Japanese Heart Journal*. 2001; 42:725–738. PMID: [11933922](#)
49. Haynes R, Jiang L, Hopewell J, Li J, Chen F, Parish S; HPS2-THRIVE Collaborative Group. HPS2-THRIVE randomized placebo-controlled trial in 25 673 high-risk patients of ER niacin/laropiprant: trial design, pre-specified muscle and liver outcomes, and reasons for stopping study treatment. *European Heart Journal*. 2013; 34(17):1279–1291. doi: [10.1093/eurheartj/ehi055](#) PMID: [23444397](#)
50. Chan E, Tan M, Xin J, Sudarsanam S, Johnson D. Interactions between traditional Chinese medicines and Western. *Current Opinion in Drug Discovery & Development*. 2010; 13(1):50–65.
51. Prasad G, Wong T, Meliton G, Bhaloo S. Rhabdomyolysis due to red yeast rice (*Monascus purpureus*) in a renal transplant recipient. *Transplantation*. 2002; 74(8):1200–1201. PMID: [12438974](#)
52. Higashi T, Shekelle P, Solomon D, Knight E, Roth C, Chang J, et al. The quality of pharmacologic care for vulnerable older patients. *Annals of Internal Medicine*. 2004; 140(9):714–720. PMID: [15126255](#)