

## BEHAVIOURAL NEUROSCIENCE

# Optogenetic stimulation of astrocytes in the posterior hypothalamus increases sleep at night in C57BL/6J mice

Dheeraj Pelluru,<sup>1</sup> Roda Rani Konadhode,<sup>1</sup> Narayan R. Bhat<sup>2</sup> and Priyattam J. Shiromani<sup>1,3</sup><sup>1</sup>Department of Psychiatry & Behavioral Sciences, Medical University of South Carolina, Charleston, SC 29425, USA<sup>2</sup>Department of Neurosciences, Medical University of South Carolina, Charleston, SC 29425, USA<sup>3</sup>Ralph H. Johnson VA Medical Center, Charleston, SC 29401, USA**Keywords:** channelrhodopsin-2, melanin concentrating hormone, orexin, recombinant adenoassociated virus, REM sleep

Edited by Rae Silver

Received 22 April 2015, revised 27 August 2015, accepted 10 September 2015

## Abstract

A distributed network of neurons regulates wake, non-rapid eye movement (NREM) sleep, and REM sleep. However, there are also glia in the brain, and there is growing evidence that neurons and astroglia communicate intimately to regulate behaviour. To identify the effect of optogenetic stimulation of astrocytes on sleep, the promoter for the astrocyte-specific cytoskeletal protein, glial fibrillary acidic protein (GFAP) was used to direct the expression of channelrhodopsin-2 (ChR2) and the linked reporter gene, enhanced yellow fluorescent protein (EYFP), in astrocytes. rAAV-GFAP-ChR2 (H134R)-EYFP or rAAV-GFAP-EYFP was microinjected (750 nL) into the posterior hypothalamus (bilateral) of mice. Three weeks later baseline sleep was recorded (0 Hz) and 24 h later optogenetic stimulation applied during the first 6 h of the lights-off period. Mice with ChR2 were given 5, 10 or 30 Hz stimulation for 6 h (10-ms pulses; 1 mW; 1 min on 4 min off). At least 36 h elapsed between the stimulation periods (5, 10, 30 Hz) and although 0 Hz was always first, the order of the other three stimulation rates was randomised. In mice with ChR2 ( $n = 7$ ), 10 Hz, but not 5 or 30 Hz stimulation increased both NREM and REM sleep during the 6-h period of stimulation. Delta power did not increase. In control mice (no ChR2;  $n = 5$ ), 10 Hz stimulation had no effect. This study demonstrates that direct stimulation of astrocytes powerfully induces sleep during the active phase of the sleep–wake cycle and underlines the inclusion of astrocytes in network models of sleep–wake regulation.

## Introduction

It is now firmly established that astrocytes actively control neuronal activity and synaptic transmission (Araque *et al.*, 2001; Panatier *et al.*, 2011). A single astrocyte contacts hundreds of dendrites, and tens of thousands of synapses (Bushong *et al.*, 2002; Halassa *et al.*, 2007). The concept of a tripartite synapse has emerged whereby neuronal transmission increases  $\text{Ca}^{2+}$  in astrocytes (Araque *et al.*, 1999). Astrocytes do not generate an action potential, but they respond to stimulation by intracellular  $[\text{Ca}^{2+}]_i$  waves, also known as ‘ $\text{Ca}^{2+}$  excitability’ that can be recorded *in vivo* (Hirase *et al.*, 2004; Wang *et al.*, 2006; Dombeck *et al.*, 2007; Bekar *et al.*, 2008; Schummers *et al.*, 2008; Shigetomi *et al.*, 2010), *in vitro* (Cornell-Bell *et al.*, 1990) and also in human brain slices (Oberheim *et al.*, 2009). The  $\text{Ca}^{2+}$  wave spreads within a single mature astrocyte causing the release of its chemical transmitter, dubbed gliotransmitter, that modulates neuronal transmission (Araque *et al.*, 1999). Astrocytes release glutamate that locally excites neurons (Fellin

*et al.*, 2006). Astrocytes also release ATP, a major source of extracellular adenosine in the brain (Zhang *et al.*, 2003; Pascual *et al.*, 2005; Serrano *et al.*, 2006). Optogenetic activation of astrocytes in the medulla oblongata releases ATP and increases breathing (Gourine *et al.*, 2010). Adenosine inhibits neurons via the adenosine A1 receptor (Deng *et al.*, 2011) and increased levels of adenosine stimulate sleep (Porkka-Heiskanen *et al.*, 1997). Conversely, sleep is decreased when adenosine released by astrocytes is decreased (Halassa *et al.*, 2009). Astrocytes regulate food intake by modulating adenosine levels and inhibiting agouti-related peptide (AGRP) neurons via the adenosine A1 receptor (Yang *et al.*, 2015).

Glia outnumber neurons and because they are considered to be partners with neurons in regulating sleep (Frank, 2013) it is important to directly manipulate them in local circuits to better understand their impact on a specific behaviour such as sleep. This is now feasible because of the development of optogenetics (Boyden *et al.*, 2005). Recently, we used optogenetics to selectively stimulate sleep-active neurons in the posterior hypothalamus and found that it robustly increased sleep (Konadhode *et al.*, 2013). However, the effects of optogenetic stimulation of astrocytes on sleep are not known. Therefore, the present study tests the hypothesis that optogenetic stimulation of astrocytes increases sleep. In wild-type C57BL/

Correspondence: Dr P. J. Shiromani, <sup>3</sup>Ralph H. Johnson VA Medical Center, as above.  
E-mail: shiroman@muscc.edu

6J mice, we found that sleep was increased during the active phase in response to optogenetic stimulation of astrocytes.

## Materials and methods

All manipulations done to the mice adhered to the guide for the humane care and use of laboratory animals and were approved by the Medical University of South Carolina (protocol 3294) and the Ralph H. Johnson VA (protocol 537) Institutional Animal Care and Use Committee.

### rAAV-GFAP-ChR2 (H134R)-EYFP plasmid construction

The entire plasmid containing glial fibrillary acidic protein (GFAP) – channelrhodopsin-2 (ChR2) (H134R) – enhanced yellow fluorescent protein (EYFP) was generously supplied by Karl Deisseroth (Fig. 1C). We then submitted it for packaging in recombinant adeno-associated virus (rAAV) serotype 5 virus (University of North Carolina, Chapel Hill, NC, USA) and titres of up to  $1.5 \times 10^{12}$  virus molecules/mL were injected bilaterally into the posterior hypothalamus. A separate plasmid that did not contain ChR2 was used as control (rAAV-GFAP-EYFP) and was similarly packaged.

### Implantation of sleep electrodes and delivery of virus

Twenty wild-type (nine males and 11 females) C57BL/6J mice (Jackson Laboratory, Bar Harbor, ME, USA) that were approximately 6 months old and weighing 20–35 g were used. Using a stereotaxic apparatus (under 2% isoflurane anaesthesia) the rAAV-GFAP-ChR2 (H134R)-EYFP or rAAV-GFAP-EYFP virus was delivered in 750 nL per injection with an injector cannula (33 gauge, cat. no. C3151-SPC; Plastics1, Roanoke, VA, USA) coupled to a 10- $\mu$ L Hamilton syringe. In each mouse, one microinjection per each side targeted the posterior hypothalamus. The virus was injected slowly over 10 min and we waited a further 10 min before withdrawing the injector cannula. Two guide cannulae (26 gauge with 1.4-mm spacing and 4 mm below pedestal height) were implanted and targeted the posterior hypothalamus. The optogenetic fibre optic probes (200  $\mu$ m; cat. no. FT200EMT, Thor labs, Newton, NJ, USA) were inserted into the guide cannulae.

At this time the electrodes to record the electroencephalogram (EEG) and electromyogram (EMG) were implanted as described previously (Shiromani *et al.*, 2004). Briefly, four screw electrodes (cat. no. E363-96-1.6-SPC, Plastics1) were placed in the skull to record cortical EEG, one on the frontal cortex and one on the contralateral parietal cortex of each side. Two flexible wire electrodes (cat. no. E363-76-SPC, Plastics1) were inserted into the nuchal muscles to record muscle activity (EMG). All the electrodes were inserted into a six-pin acrylic socket and secured to the skull with dental cement. The EEG was recorded from two contralateral screws (frontal–occipital). The EMG signal was recorded from nuchal muscles. The EEG and EMG signals were amplified via a Grass polygraph and recorded onto the hard disk using an analog–digital board (Kissei Comtec Co., Nagano, Japan).

After surgery the animals were housed singly in Plexiglas cages with bedding; food and water were available *ad libitum*. The temperature in the sleep recording room was 25 °C and a 12-h light/dark cycle (06:00–18:00 lights on; 100 lux) was maintained.

### Optogenetic stimulation paradigm

Ten days after surgery the mice were tethered to lightweight recording cables mounted to swivels and adapted for 10 days. The swivels

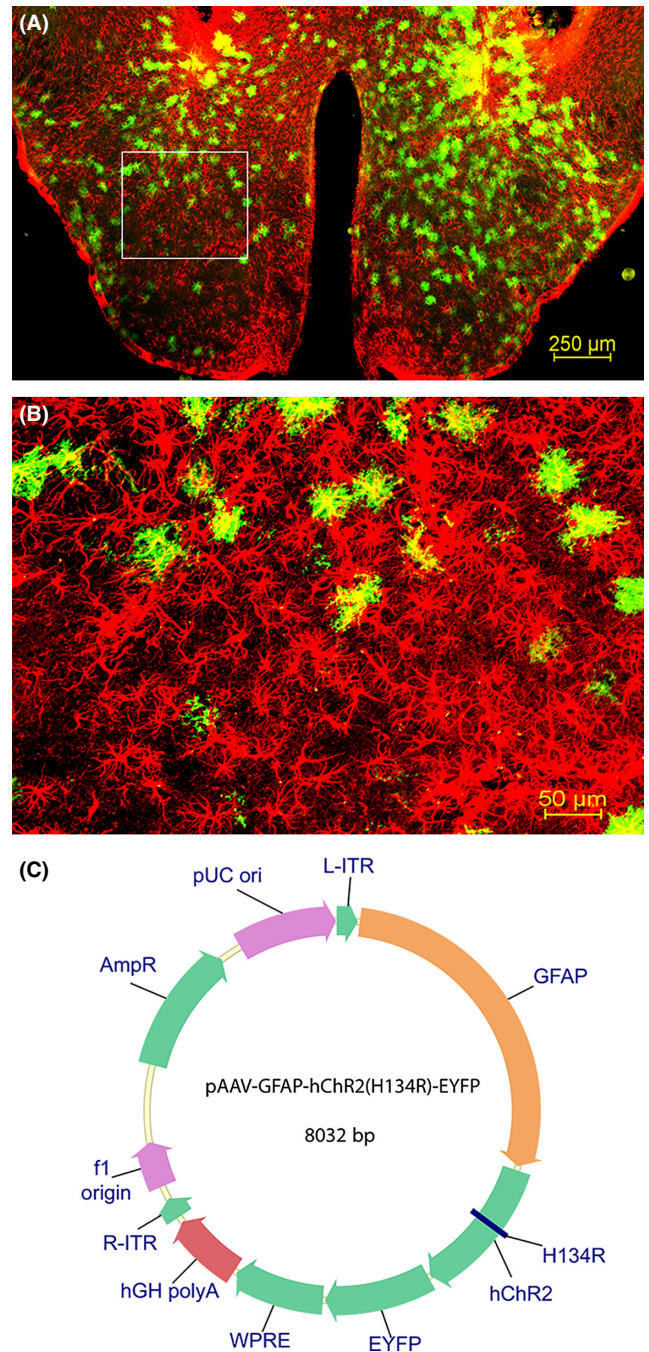


FIG. 1. Distribution of astrocytes in the posterior hypothalamus. The photomicrographs illustrate the astrocytes containing GFAP (red) and EYFP (green) in a representative mouse (A and B). A low-magnification view of the area of disbursement of the ChR2-EYFP in the posterior hypothalamus is depicted in A. B is a high-magnification view of the boxed area in A. Map of ChR2 linked GFAP reporter plasmid that was packaged into recombinant adenoassociated virus (rAAV; C).

allowed the mice to engage in unimpeded freedom of movement. Three weeks after surgery and viral delivery, sleep was recorded for 6 h during the first half of the lights-off period (the wake-active phase in nocturnal rodents). During this first sleep recording session there was no optogenetic stimulation and this 6-h session represents 0 Hz. Twenty-four hours later, the animals with ChR2 were given either 5, 10 or 30 Hz stimulation for 6 h (1 min stimulation followed by 4 min no stimulation, repeated every 5 min for 6 h). The

blue light (473 nm; 1-mW power at the tip of the probe) pulses (10-ms duration) were delivered through a programmable stimulator (Master 8, AMPI, Jerusalem, Israel). Sleep and behaviour were recorded for the 6-h stimulation period. At least 36 h elapsed between the stimulation periods (5, 10, 30 Hz) and although 0 Hz was always first, the order of the other three stimulation rates was randomised.

In the group of mice administered the control virus, rAAV-GFAP-EYFP, sleep was recorded after 0 and 10 Hz stimulation using the above protocol. These animals determined the effect of light stimulation in astrocytes without ChR2.

### Immunohistochemistry

At the end of the experimental paradigm the animals were deeply anaesthetised (4% isoflurane) and the brains perfused (25 mL saline followed by 100 mL 10% formaldehyde). After equilibration in 30% sucrose the brains were cut on a cryostat (40- $\mu$ m coronal sections; 1 in 4 series). The free-floating sections were incubated overnight in a primary antibody mouse anti-GFAP (1:500; cat. no. MAB-3402; EMD Millipore, Billerica, MA, USA) followed by 2 h incubation in the secondary antibody (donkey anti-mouse-Alexa Fluor 568; 1:500; Invitrogen, Carlsbad, CA, USA). For staining of neurons the sections were incubated overnight in mouse anti-NeuN (1:500, cat. no. MAB377, EMD Millipore) primary antibody, followed by 2 h incubation in donkey anti mouse-Alexa Fluor 568 (1:500; Invitrogen) secondary antibody. For staining of microglia the sections were incubated overnight in rabbit anti-Iba1 (1:500, cat. no. 019-19741, Wako Chemicals, Richmond, VA, USA) primary antibody, followed by 2 h incubation in donkey anti rabbit-Alexa Fluor 568 (1:500; Invitrogen) secondary antibody. For staining of oligodendrocytes the sections were incubated overnight in mouse anti-oligodendrocyte (1:500, cat. no. MAB328, EMD Millipore) primary antibody, followed by 2 h incubation in donkey anti-mouse-Alexa Fluor 568 (1:500; Invitrogen) secondary antibody. For double staining of astrocytes with GFAP and orexin or melanin concentrating hormone (MCH) neurons, the sections were incubated overnight in primary antibodies, i.e. mouse anti-GFAP (1:500; cat. no. MAB-3402, EMD Millipore), goat anti-Orexin (1:500; cat. no. SC-8070; Santa Cruz Biotechnology, Santa Cruz, CA, USA) or rabbit anti-MCH (1:500; cat. no. H-070-47, Phoenix Pharmaceuticals, Burlingame, CA, USA) respectively, followed by 2 h incubation in secondary antibodies (donkey anti-mouse-Alexa Fluor 568, donkey anti-goat-Alexa Fluor 647 or donkey anti-rabbit-Alexa Fluor 647 respectively; 1:500; Invitrogen). For double staining of astrocytes for GFAP and histamine neurons for histidine decarboxylase (HDC), the sections were incubated overnight in primary antibodies, mouse anti-GFAP (1:500) and rabbit anti-HDC (1:200; cat. no. 03-16045, American Research Products, Waltham, MA, USA). Next day, the sections were incubated for 2 h in secondary antibodies (donkey anti-mouse-Alexa Fluor 568 and donkey anti-rabbit-Alexa Fluor 647, respectively; 1:500; Invitrogen). The sections were washed, mounted onto gelatin-coated slides and cover slipped. The fluorescent images were visualised with a Nikon A1RSi confocal microscope.

### Identification of sleep–wake states

The sleep records were scored by blinding the scorer (D.P.) to the type of rAAV administered to the mice. After the EEG data were scored and the brain tissue was examined for the presence of EYFP<sup>+</sup> astrocytes, the code was broken to identify the type of rAAV administered to the mouse. The 6-h EEG, EMG and video recordings were

scored manually on a computer (Sleep Sign software, Kissei Comtec, Nagano, Japan) in 12-s epochs for wake, non-rapid eye movement (NREM) sleep and REM sleep (Liu *et al.*, 2011). Wakefulness was identified by the presence of desynchronised EEG, and high EMG activity. NREM sleep consisted of high-amplitude slow waves together with a low EMG tone relative to waking. REM sleep was identified by the presence of regular EEG theta activity coupled with low EMG relative to slow-wave sleep. The behaviour of the mice was recorded on video and this aided in identifying sleep–wake states.

### Analysis of delta power

A fast Fourier transform (FFT) of the EEG during wake, NREM and REM sleep was automatically calculated by the software (Sleep Sign) in 0.5-Hz bins. Because of the variability in the amplitude of the EEG across mice, FFT values were normalised by dividing the EEG power during NREM sleep (0.5–4 Hz) by the EEG power during wake (0.5–4 Hz).

### Counting of astrocytes

The total numbers of astrocytes and of infected astrocytes were counted for mice with ChR2 by drawing a 4 × 3 grid (250 × 330  $\mu$ m each) in each hemisphere on the fluorescence microscopy images. The numbers of EYFP<sup>+</sup> astrocytes and of single GFAP<sup>+</sup> astrocytes were counted inside the grids. The percentage of infected astrocytes, i.e. EYFP<sup>+</sup>, as a function of total number of astrocytes (GFAP<sup>+</sup> + EYFP<sup>+</sup>) was determined.

### Statistical analysis

The sleep data in the experimental group were analysed with a one-way repeated-measures ANOVA (Holm-Sidak *post hoc* test against 0 Hz) and a priori paired t-tests. Pearson correlation determined the relationship between the percentage of infected astrocytes and REM, NREM and total sleep.  $P < 0.05$  was used to determine level of significance.

## Results

### Distribution of rAAV-expressing astrocytes

The promoter for GFAP directed the expression of the ChR2-EYFP fusion protein (Fig. 1). The rAAV-GFAP-ChR2 (H134R)-EYFP was present in GFAP<sup>+</sup> astrocytes only in the posterior hypothalamus (Fig. 1A; the boxed area is shown in Fig. 1B). Astrocytes outside the injection zone did not contain the reporter gene, indicating that the infected cells did not migrate outside the intended target site. In mice given ChR2-EYFP, the mean ( $\pm$ SE) percentage of astrocytes containing the reporter gene (proxy for ChR2) relative to GFAP<sup>+</sup> astrocytes was 22.21  $\pm$  2.23%. Figure 2 shows the distribution of the infection zone in mice with ChR2.

Figure 3 shows the relationship between surrounding neurons (Fig. 3A), microglia (Fig. 3B) and oligodendrocytes (Fig. 3C) with ChR2-EYFP-positive astrocytes in the infected region. This shows that there is no ChR2-EYFP infection in neurons, microglial cells or oligodendrocytes at the target site. Figure 4 indicates the close proximity of the ChR2-EYFP-positive astrocytes with the sleep-active neurons containing MCH (Fig. 4A) or the arousal neurons containing orexin (Fig. 4B) and histidine decarboxylase (histamine synthesizing enzyme) neurons (Fig. 4C)

### Effect of optogenetic stimulation of astrocytes on sleep in mice

Twelve mice were administered rAAV-GFAP-ChR2 (H134R)-EYFP and implanted with sleep-recording electrodes. In two mice the sleep data could not be analysed because of noise artefacts in the EEG/EMG signal. In three mice, post-mortem analysis revealed no EYFP<sup>+</sup> cells in the brain, perhaps because the microinjection cannula was

clogged during injection of the virus. The sleep data presented in Figs 5 and 6 summarise the effects of optogenetic stimulation of astrocytes on wake, NREM and REM sleep during the first 6 h of the lights-off period in seven mice (five males; two females) given ChR2.

The sleep data were initially averaged over the 6 h of the experiment (Fig. 5) to identify the stimulation rate that produced the changes in sleep. Optogenetic stimulation at 10 Hz compared with 0 Hz significantly increased NREM sleep in mice with ChR2

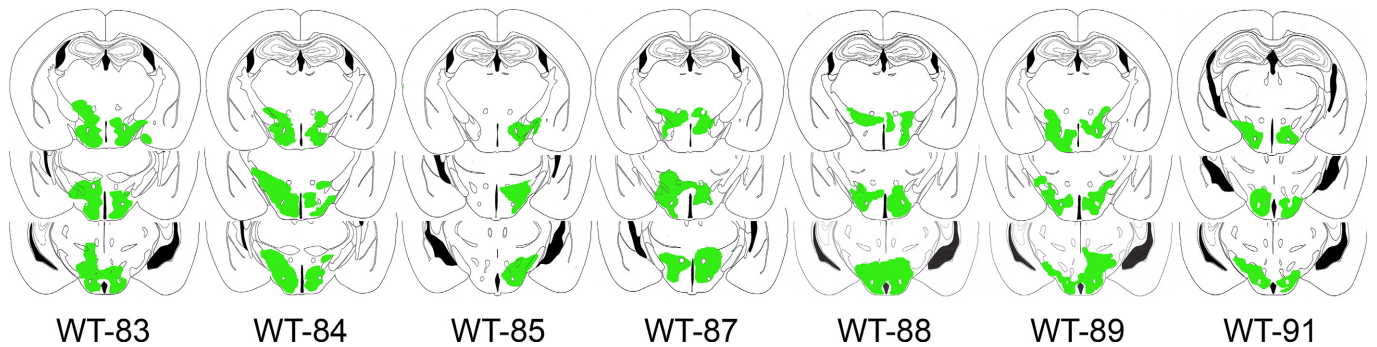


FIG. 2. The drawings represent coronal sections of the mouse brain with rAAV-GFAP-ChR2 (H134R)-EYFP-infected astrocytes in the posterior hypothalamus. The transfected regions where the EYFP signal was present were traced and are shown in green. The numbers below the sections indicate the mouse ID. The distance of the sections range from 1.22 to 2.46 mm posterior to bregma (Franklin & Paxinos, 1997).

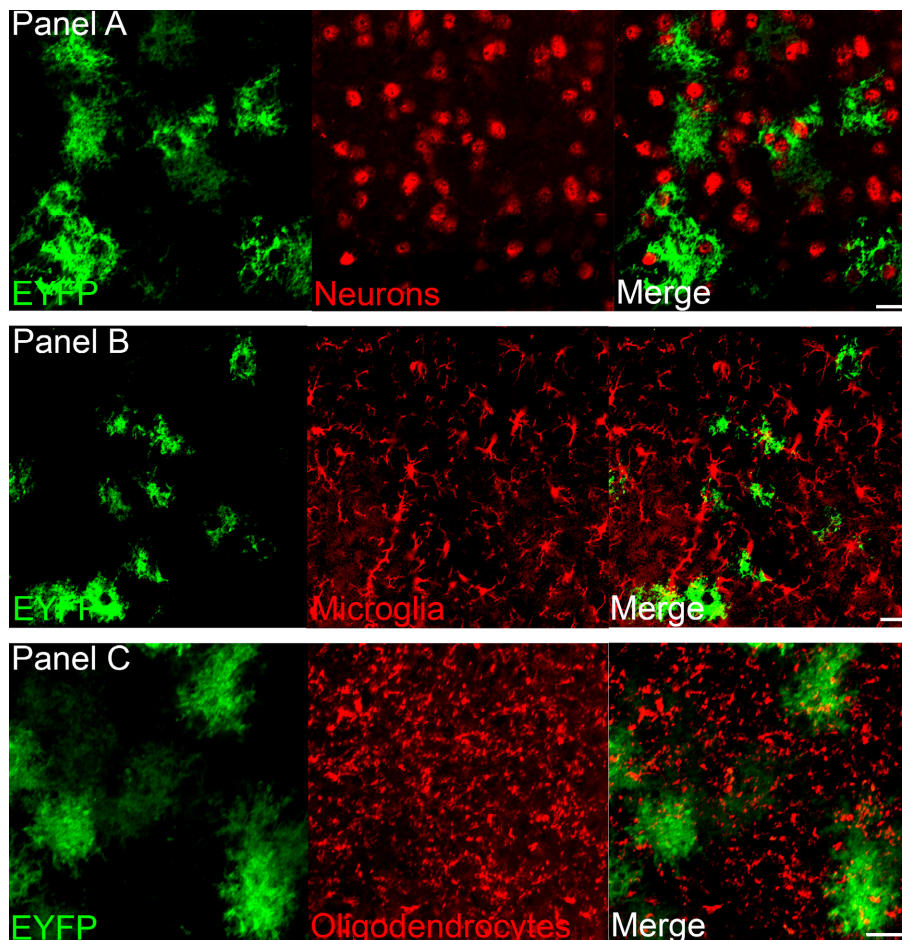


FIG. 3. ChR2-EYFP is expressed in astrocytes but not in other cell types. The photomicrographs show that the GFAP promoter drives ChR2-EYFP (green) into astrocytes and not neurons (A; anti-NeuN), microglia (B; anti-Iba-1) or oligodendrocytes (C; anti-oligodendrocytes). Scale bars = 25  $\mu$ m.

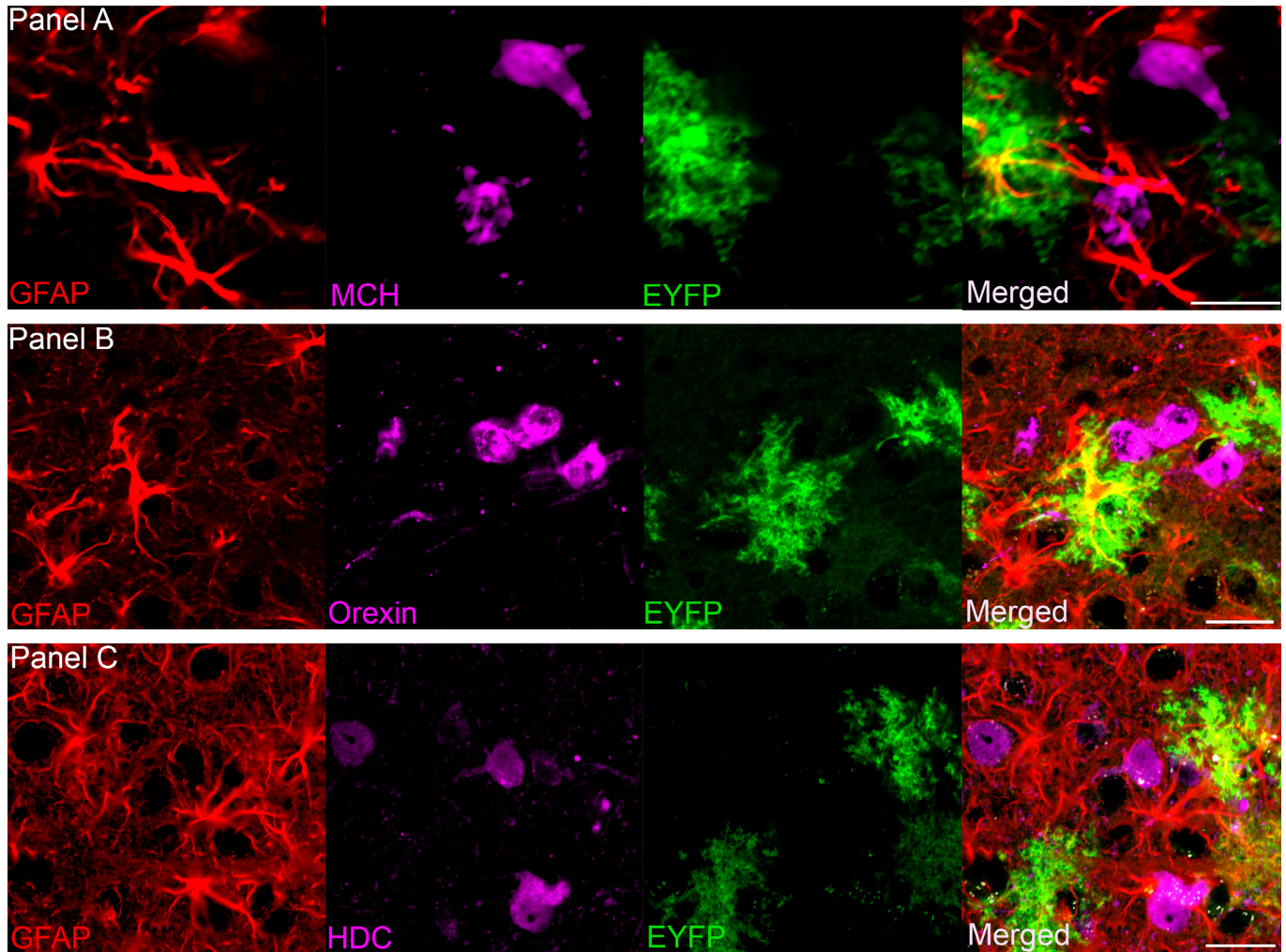


FIG. 4. The close relationship between astrocytes that contain ChR2-EYFP (green), and sleep-regulating MCH (melanin concentrating hormone) neurons (A), wake-active orexin neurons (B) and neurons containing the histamine synthesizing enzyme histidine decarboxylase (HDC) (C). Scale bars = 25  $\mu\text{m}$ .

(+68%;  $P < 0.003$ ), and decreased wake ( $P < 0.003$ ). Stimulation at 10 Hz significantly increased REM sleep ( $P < 0.05$ ). Five or 30 Hz stimulation rates did not significantly change percentage wake, NREM or REM sleep.

Figure 6 summarises the time course of changes in sleep induced by the 10 Hz stimulation. The data were analysed using a nested repeated-measures ANOVA design (time factor (six 1-h blocks) nested within the treatment factor (two blocks; 0, 10 Hz) (Kirk, 1968). There was a significant effect of the treatment factor (0 vs. 10 Hz stimulation) for wake ( $F_{1,66} = 13.23$ ;  $P < 0.01$ ), NREM ( $F_{1,66} = 11.31$ ;  $P < 0.01$ ) and REM sleep ( $F_{1,66} = 6.74$ ;  $P < 0.05$ ). There was also a significant effect of the time factor for wake ( $F_{5,66} = 3.06$ ;  $P < 0.05$ ) and NREM ( $F_{5,66} = 2.56$ ;  $P < 0.05$ ), but not for REM sleep ( $F_{5,66} = 2.12$ ; n.s.). There was no interaction (time  $\times$  treatment) effect for wake, NREM or REM sleep. The impact of the optogenetic stimulation was evident on wake and NREM by the end of the first hour and it progressively increased so that peak effects were significant at the end of the fourth hour (Fig. 6). Stimulation at 5 and 30 Hz did not produce such a progressive change over the 6 h of stimulation (Supporting Information Fig. S1).

Stimulation at 10 Hz did not increase delta power during NREM sleep (0 Hz =  $2.63 \pm 0.23$ ; 10 Hz =  $2.22 \pm 0.18$ ). There was no significant relationship between the number of transfected astrocytes

and REM sleep ( $r = 0.55$ ), NREM sleep ( $r = 0.23$ ) or total sleep (REM+NREM;  $r = 0.35$ ) in the mice with ChR2.

With 10 Hz stimulation there was a significant increase in the number of NREM sleep bouts (+79.8%; Table 1) and a decrease in length of NREM bouts ( $-22.76\%$ ; Table 1). The stimulation increased the number of wake bouts (+74.9%; Table 1) but the length of these bouts was significantly decreased ( $-59.69\%$ ). The increase in number of NREM bouts coupled with a decreased length of wake bouts may have contributed to the increase in percentage NREM sleep and a decrease in waking.

The effects of light stimulation were examined in a control group of mice that received the virus without ChR2 ( $n = 8$ ; rAAV-GFAP-EYFP). However, data for three mice in this group were removed because of excessive noise artefacts in the EEG/EMG signal. With 10 Hz stimulation in mice without ChR2 ( $n = 5$  females) there was no significant change in percentage wake (0 Hz =  $87.89 \pm 3.73$ ; 10 Hz =  $86.4 \pm 4.26$ ), NREM (0 Hz =  $11.21 \pm 3.45$ ; 10 Hz =  $11.97 \pm 3.54$ ) or REM sleep (0 Hz =  $0.82 \pm 0.35$ ; 10 Hz =  $1.44 \pm 0.76$ ).

## Discussion

The utility of astrocyte activation as a therapeutic target in the brain has been proposed (Halassa *et al.*, 2007). However, the approach

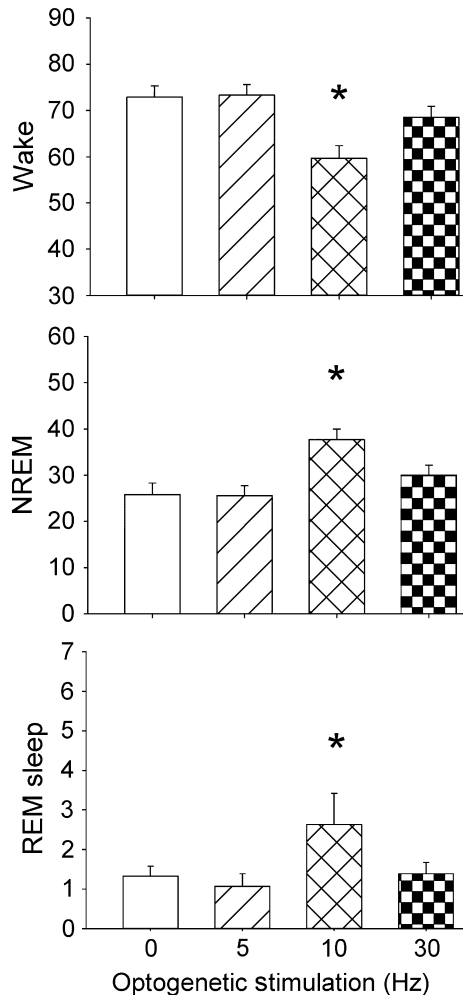


FIG. 5. Effects of optogenetic stimulation of astrocytes on percentage wake, NREM and REM sleep during the first 6 h of the lights-off period. Optogenetic stimulation was applied in the first 6 h of the lights-off period. Blue (473 nm) light pulses (10 ms duration) were applied at 0, 5, 10 and 30 Hz rates for 1 min every 5 min for 6 h (1 min with stimulation followed by 4 min without stimulation). Sleep was continuously recorded and the behaviour was videotaped. \* $P < 0.05$  vs. 0 Hz.

has not been tried in sleep disorders because it is not readily obvious where in the brain to stimulate astrocytes. Here we have provided the first evidence that optogenetic activation of astrocytes in the posterior hypothalamus increases sleep in C57BL/6J wild-type mice. The posterior hypothalamus was targeted as it contains neurons regulating both sleep and wake (Konadhode *et al.*, 2014). Orexin neurons drive arousal (Carter *et al.*, 2010) and there is considerable evidence that MCH neurons induce sleep (Hassani *et al.*, 2009; Konadhode *et al.*, 2013). The astrocytes containing ChR2-EYFP were found distributed among neurons containing MCH (Fig. 4A), orexin (Fig. 4B) and histidine decarboxylase (histamine synthesizing enzyme) (Fig. 4C).

In the present study the parameters for optogenetic stimulation of astrocytes were the same as those used to optogenetically stimulate MCH neurons (Konadhode *et al.*, 2013), which permits comparison between effects of astrocyte vs. neuron stimulation. In both studies, C57BL/6J wild-type mice were used, which required creating specific viral vectors. The advantage of this approach is that the viral vectors can also be used in rats, and other mammals that sleep, thereby strengthening the generalisability of the effect. Recently, we

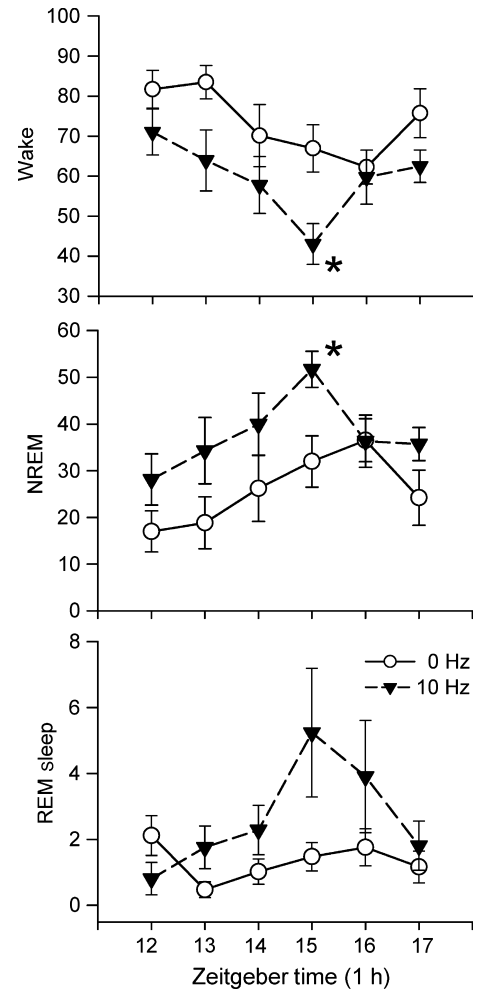


FIG. 6. Time course of effects of optogenetic stimulation of astrocytes in the posterior hypothalamus on percentage wake, NREM and REM sleep. Stimulation at 10 Hz began at the onset of the lights-off period (Zeitgeber time 12) and continued for 6 h (1 min on, 4 min off). A repeated-measures ANOVA determined significant effect of stimulation (0 vs. 10 Hz) for wake, NREM and REM sleep. There was also a significant effect of the time (Zeitgeber Time) for wake and NREM, but not for REM sleep. There was no interaction (time  $\times$  treatment) effect for wake, NREM or REM sleep. An asterisk denotes significant difference with 0 Hz for that hour (Holm-Sidak post-hoc comparison;  $P < 0.05$ ). There was no effect of 5 and 30 Hz stimulation on sleep (Fig. 5 and Fig. S1). Stimulation at 10 Hz produced a progressive decrease in waking and increased NREM with a peak after 4 h. REM sleep lagged but also peaked at 4 h. The waxing and waning of sleep suggests a physiological response mediated by adenosine (see profile of adenosine in response to 6 h of sleep deprivation in Blanco-Centurion *et al.*, 2006).

TABLE 1. Effects of optogenetic stimulation (0 vs. 10 Hz) of astrocytes on number and length of bouts of wake, NREM and REM sleep in wild-type mice ( $n = 7$ )

	Number of bouts		Length of bouts (s)	
	0 Hz	10 Hz	0 Hz	10 Hz
Wake	19.36 (3.72)	33.86* (2.29)	989.96 (196.2)	399* (45.5)
NREM	19.07 (3.16)	34.29* (2.8)	315.89 (27.8)	244* (20.37)
REM	4.14 (0.59)	8.43 (2.17)	69.77 (7.43)	66.29 (7.18)

Data represent the mean ( $\pm$ SEM) number and length of bouts during the 6-h stimulation period (first half of lights-off period). \*Paired  $t$ -test vs. 0 Hz;  $P < 0.05$ .

have confirmed in rats that optogenetic stimulation of MCH neurons increases sleep (Blanco-Centurion *et al.*, 2014). In both studies, the ChR2 was inserted into the posterior hypothalamus, a region implicated in sleep. The stimulation occurred at night, when nocturnal rodents are mostly awake, and it increased both NREM and REM sleep. This attests to the significance of the posterior hypothalamus in sleep–wake regulation. However, other brain areas need to be similarly manipulated to fully identify the role of astrocytes and neurons in regulating states of consciousness.

Astrocytes release D-serine, glutamate, ATP and cytokines, such as tumour necrosis factor- $\alpha$  (TNF- $\alpha$ ), among other molecules (Hines & Haydon, 2014). Glutamate is the primary excitatory neurotransmitter in the brain and at least in the hippocampus half of the excitatory synapses are closely coupled to an astrocytic process (Ventura & Harris, 1999). D-Serine and glutamate released from astrocytes enhance excitation of neurons (Panatier *et al.*, 2006). In the primary visual cortex, optogenetic stimulation of astrocytes enhances both excitatory and inhibitory synaptic transmission (Perea *et al.*, 2014).

ATP released from astrocytes and converted to extracellular adenosine inhibits synaptic transmission (Pascual *et al.*, 2005). There is considerable evidence that accumulation of adenosine in the brain increases sleep (Porkka-Heiskanen *et al.*, 1997; Frank, 2013). Astrocytes are a major source of ATP and extracellular adenosine, which acts on pre-synaptic adenosine 1-receptors. Adenosine A1R agonists potently stimulate sleep whereas the antagonists decrease sleep (Blanco-Centurion *et al.*, 2006). Genetically engineered mice with reduced adenosine levels (expression of dominant negative SNARE selectively within astrocytes) have normal amounts of sleep and wake in the baseline period but do not have a sleep rebound after sleep deprivation (Halassa *et al.*, 2009). Microinjection of adenosine in the rat posterior hypothalamus, the site of optogenetic stimulation of astrocytes in the present study, increases sleep (Alam *et al.*, 2009) and this has been linked to reduction in activity of the arousal orexin neurons (Alam *et al.*, 2005). In the present study, we found that the impact of the stimulation was progressive (Fig. 6) and this is consistent with the accumulation of adenosine. A future study could use the dominant negative SNARE mice and we hypothesise that optogenetic stimulation of the astrocytes should release less adenosine and consequently there should be a blunted sleep response.

Besides adenosine, cytokines released from astrocytes may also have contributed to the increase in sleep. Astrocytes are a source of cytokines in the brain (Benveniste *et al.*, 1990), and there is considerable evidence linking cytokines and sleep (Imeri & Opp, 2009). In particular, interleukin-1 $\beta$  and TNF- $\alpha$  increase sleep in response to immune challenge (Krueger *et al.*, 2011). Both are produced by neurons and glia, and their receptors are also present on neurons and glia (Krueger *et al.*, 2011). Previously, infection of mice with murine gammaherpesvirus-68 has been shown to increase sleep (Olivadoti *et al.*, 2011). In the present study, rAAV was used to insert the ChR2 and EYFP genes into astrocytes. However, it is unlikely that an inflammatory response to the rAAV was responsible for the increase in sleep because sleep was not increased in the 5- or 30-Hz animals. It is more likely that optogenetic stimulation of astrocytes released cytokines, which then affected the orexin and MCH neurons regulating sleep – a possibility we would like to explore further.

Will optogenetic activation of astrocytes in other brain regions also increase sleep? It is important to answer this question because although astrocytes are pervasive throughout the brain, there are specific neurons localised in the basal forebrain, hypothalamus and brainstem that are identified as regulating wake, NREM and REM sleep (Pelluru *et al.*, 2013). The basal forebrain contains both wake-

active and sleep-active neurons (Jones, 2011). Moreover, only in this region is there an increase in adenosine in response to waking (Porkka-Heiskanen *et al.*, 1997). Thus, activation of astrocytes in the basal forebrain should increase sleep. Similarly, we postulate that in the pons where the sleep–wake neurons are also located, astrocytic activation should increase sleep.

A potential concern regarding the use of optogenetics to stimulate astrocytes is that the astrocytes are not excitable cells like neurons, and that the presence of ChR2 might be considered abnormal. However, specific behaviours have been manipulated by optogenetic stimulation of astrocytes (Gourine *et al.*, 2010; Perea *et al.*, 2014). In the present study, the stimulation was applied for 1 min every 5 min. Thus, the light stimulation was intermittent and lasted only 20% of the time. Moreover, each animal was stimulated at three different rates (5, 10 and 30 Hz, randomised) with a 36-h break between each rate. The effects on sleep were evident with 10 Hz stimulation but not 5 or 30 Hz (Figs 5 and 6 and Fig. S1). The impact of 10 Hz stimulation was that it progressively increased sleep, with a peak at 4 h (Fig. 6). Such a time course was not seen with 5 or 30 Hz stimulation (Fig. S1), perhaps because 5 Hz did not provide sufficient stimulation whereas 30 Hz was excessive. The progressive increase in sleep in response to 10 Hz astrocyte stimulation suggests that there was a slow cumulative load from the gradual accumulation of gliotransmitters, such as adenosine. However, the effects subsided after 4 h even though light continued to be delivered, suggesting activation of endogenous factors regulating levels of gliotransmitters, such as adenosine. This is consistent with the time course of adenosine, which increases in response to 4 h of sleep deprivation, but then declines in the subsequent 2 h (Blanco-Centurion *et al.*, 2006).

One limitation of the optogenetic approach is that light may not reach all of the astrocytes containing ChR2. In the present study sleep was increased when 22% of the total astrocytes in the target region were infected, indicating the potency of the glial effect. Alternatively, a pharmacogenetic approach is likely to reach a widely distributed phenotype of cells. This approach uses a drug, clozapine-N-oxide (CNO), to exclusively activate genetically engineered receptors (designer receptors exclusively activated by designer drugs (DREADD) (Armbruster *et al.*, 2007). Recently, this approach was used to link astrocytes to feeding behaviour. In their study, the engineered muscarinic receptors hM3Dq (excited by drug) or hM4Di (inhibited by drug) were inserted into astrocytes (GFAP promoter driven) in the medial basal hypothalamus and feeding behaviour was monitored after injection of the drug, CNO. Drug-induced stimulation of the hM3Dq receptors on the astrocytes inhibited feeding behaviour. The effect of astrocyte stimulation was linked to a release of adenosine from the astrocytes, which then inhibited neurons via the adenosine A1R (Yang *et al.*, 2015). We anticipate that the DREADD method will be used to manipulate astrocytes in specific brain regions and the effects on sleep will be determined.

In the brain, astrocytes may function as wakefulness integrators (Frank, 2013). The brain is most active during waking and astrocytes show changes in intracellular calcium concentrations. These changes in calcium may dampen the waking drive and promote sleep (Frank, 2013). In the present study, optogenetic stimulation of astrocytes may have produced similar changes in calcium and, coupled with secretion of glutamate, ATP and cytokines, imparted a cumulative load on the posterior hypothalamic neurons to promote sleep.

Optogenetics is increasingly used as a powerful tool to mechanistically test the roles of specific central nervous system cell types in

behaviour. Using this tool, this is the first study to demonstrate that stimulation of hypothalamic astrocytes increases sleep. The effects of astrocytic stimulation are likely to be more localised compared with neuronal stimulation because neurons project to multiple targets. Future studies will focus on the nature of astrocyte-released factors (known and novel) potentially involved in sleep induction.

## Supporting Information

Additional supporting information can be found in the online version of this article:

Fig S1. Effects of 5 and 30 Hz stimulation of astrocytes in the posterior hypothalamus on wake, NREM and REM sleep

## Conflict of interest

The authors declare no conflicts of interest, financial or otherwise.

## Acknowledgments

We thank Drs Kumar Sambamurti, Carlos Blanco-Centurion and Meng Liu for helpful comments during the writing of the manuscript. We thank Dr Amanda LaRue for use of the confocal microscope. This study was supported by The Medical Research Service of the Department of Veterans Affairs and NIH grants NS084477, NS079940 and NS052287.

## Abbreviations

AGRP, agouti-related peptide; ChR2, channelrhodopsin-2; CNO, clozapine-N-oxide; DREADD, designer receptors exclusively activated by designer drugs; EEG, electroencephalogram; EMG, electromyogram; EYFP, enhanced yellow fluorescent protein; FFT, fast Fourier transform; GFAP, glial fibrillary acidic protein; HDC, histidine decarboxylase; MCH, melanin concentrating hormone; NREM, non-rapid eye movement; rAAV, recombinant adeno-associated virus; REM, rapid eye movement; TNF $\alpha$ , tumor necrosis factor- $\alpha$ .

## References

- Alam, M.N., Kumar, S., Bashir, T., Suntsova, N., Methippara, M.M., Szymusiak, R. & McGinty, D. (2005) GABA-mediated control of hypocretin- but not melanin-concentrating hormone-immunoreactive neurones during sleep in rats. *J. Physiol.*, **563**, 569–582.
- Alam, M.N., Kumar, S., Rai, S., Methippara, M., Szymusiak, R. & McGinty, D. (2009) Role of adenosine A(1) receptor in the perifornical-lateral hypothalamic area in sleep–wake regulation in rats. *Brain Res.*, **1304**, 96–104.
- Araque, A., Parpura, V., Sanzgiri, R.P. & Haydon, P.G. (1999) Tripartite synapses: glia, the unacknowledged partner. *Trends Neurosci.*, **22**, 208–215.
- Araque, A., Carmignoto, G. & Haydon, P.G. (2001) Dynamic signaling between astrocytes and neurons. *Ann. Rev. Physiol.*, **63**, 795–813.
- Armbruster, B.N., Li, X., Pausch, M.H., Herlitze, S. & Roth, B.L. (2007) Evolving the lock to fit the key to create a family of G protein-coupled receptors potentially activated by an inert ligand. *Proc. Natl. Acad. Sci. USA*, **104**, 5163–5168.
- Bekar, L.K., He, W. & Nedergaard, M. (2008) Locus coeruleus alpha-adrenergic-mediated activation of cortical astrocytes in vivo. *Cerebr. Cortex*, **18**, 2789–2795.
- Benveniste, E.N., Sparacio, S.M., Norris, J.G., Grenett, H.E. & Fuller, G.M. (1990) Induction and regulation of interleukin-6 gene expression in rat astrocytes. *J. Neuroimmunol.*, **30**, 201–212.
- Blanco-Centurion, C., Xu, M., Murillo-Rodriguez, E., Gerashchenko, D., Shiromani, A.M., Salin-Pascual, R.J., Hof, P.R. & Shiromani, P.J. (2006) Adenosine and sleep homeostasis in the Basal forebrain. *J. Neurosci.*, **26**, 8092–8100.
- Blanco-Centurion, C.A., Pelluru, D., Konadhode, R., Liu, M., van den Pol, A.N. & Shiromani, P. (2014) Optogenetic activation of melanin-concentrating hormone (MCH) containing neurons powerfully increases sleep in rats. Program No. 257.26/OO3. Neuroscience Meeting Planner. Society for Neuroscience, Washington, DC. 2014. Available <http://www.abstractsonline.com/Plan/ViewAbstract.aspx?sKey=c37b776c-fbc2-484c-bf42-8f2f5a175d3e&cKey=60864c3a-891f-418f-86d6-b70a28d01abb&mKey=%7b54C85D94-6D69-4B09-AFAA-502C0E680CA7%7d>
- Boyden, E.S., Zhang, F., Bamberg, E., Nagel, G. & Deisseroth, K. (2005) Millisecond-timescale, genetically targeted optical control of neural activity. *Nat. Neurosci.*, **8**, 1263–1268.
- Bushong, E.A., Martone, M.E., Jones, Y.Z. & Ellisman, M.H. (2002) Protoplasmic astrocytes in CA1 stratum radiatum occupy separate anatomical domains. *J. Neurosci.*, **22**, 183–192.
- Carter, M.E., Yizhar, O., Chikahisa, S., Nguyen, H., Adamantidis, A., Nishino, S., Deisseroth, K. & de Lecea, L. (2010) Tuning arousal with optogenetic modulation of locus coeruleus neurons. *Nat. Neurosci.*, **13**, 1526–1533.
- Cornell-Bell, A.H., Finkbeiner, S.M., Cooper, M.S. & Smith, S.J. (1990) Glutamate induces calcium waves in cultured astrocytes: long-range glial signaling. *Science*, **247**, 470–473.
- Deng, Q., Terunuma, M., Fellin, T., Moss, S.J. & Haydon, P.G. (2011) Astrocytic activation of A1 receptors regulates the surface expression of NMDA receptors through a Src kinase dependent pathway. *Glia*, **59**, 1084–1093.
- Dombeck, D.A., Khabbaz, A.N., Collman, F., Adelman, T.L. & Tank, D.W. (2007) Imaging large-scale neural activity with cellular resolution in awake, mobile mice. *Neuron*, **56**, 43–57.
- Fellin, T., Pozzan, T. & Carmignoto, G. (2006) Purinergic receptors mediate two distinct glutamate release pathways in hippocampal astrocytes. *J. Biol. Chem.*, **281**, 4274–4284.
- Frank, M.G. (2013) Astroglial regulation of sleep homeostasis. *Curr. Opin. Neurobiol.*, **23**, 812–818.
- Franklin, K.B.J. & Paxinos, G. (1997) *The Mouse Brain in Stereotaxic Coordinates*, 2nd Edn. Academic Press Inc., San Diego.
- Gourine, A.V., Kasymov, V., Marina, N., Tang, F., Figueiredo, M.F., Lane, S., Teschemacher, A.G., Spyer, K.M., Deisseroth, K. & Kasparov, S. (2010) Astrocytes control breathing through pH-dependent release of ATP. *Science*, **329**, 571–575.
- Halassa, M.M., Fellin, T., Takano, H., Dong, J.H. & Haydon, P.G. (2007) Synaptic islands defined by the territory of a single astrocyte. *J. Neurosci.*, **27**, 6473–6477.
- Halassa, M.M., Florian, C., Fellin, T., Munoz, J.R., Lee, S.Y., Abel, T., Haydon, P.G. & Frank, M.G. (2009) Astrocytic modulation of sleep homeostasis and cognitive consequences of sleep loss. *Neuron*, **61**, 213–219.
- Hassani, O.K., Lee, M.G. & Jones, B.E. (2009) Melanin-concentrating hormone neurons discharge in a reciprocal manner to orexin neurons across the sleep–wake cycle. *Proc. Natl. Acad. Sci. USA*, **106**, 2418–2422.
- Hines, D.J. & Haydon, P.G. (2014) Astrocytic adenosine: from synapses to psychiatric disorders. *Philos. T. Roy. Soc. B*, **369**, 20130594.
- Hirase, H., Qian, L., Bartho, P. & Buzsaki, G. (2004) Calcium dynamics of cortical astrocytic networks in vivo. *PLoS Biol.*, **2**, E96.
- Imeri, L. & Opp, M.R. (2009) How (and why) the immune system makes us sleep. *Nat. Rev. Neurosci.*, **10**, 199–210.
- Jones, B.E. (2011) Neurobiology of waking and sleeping. *Handb. Clin. Neurol.*, **98**, 131–149.
- Kirk, R.E. (1968) *Experimental Design: Procedures for the Behavioral Sciences*. Brooks/Cole, Belmont, CA.
- Konadhode, R.R., Pelluru, D., Blanco-Centurion, C., Zayachivsky, A., Liu, M., Uhde, T., Glen, W.B. Jr, van den Pol, A.N., Mulholland, P.J. & Shiromani, P.J. (2013) Optogenetic stimulation of MCH neurons increases sleep. *J. Neurosci.*, **33**, 10257–10263.
- Konadhode, R.R., Pelluru, D. & Shiromani, P.J. (2014) Neurons containing orexin or melanin concentrating hormone reciprocally regulate wake and sleep. *Front. Syst. Neurosci.*, **8**, 244.
- Krueger, J.M., Clinton, J.M., Winters, B.D., Zielinski, M.R., Taishi, P., Jewett, K.A. & Davis, C.J. (2011) Involvement of cytokines in slow wave sleep. *Prog. Brain Res.*, **193**, 39–47.
- Liu, M., Blanco-Centurion, C., Konadhode, R., Begum, S., Pelluru, D., Gerashchenko, D., Sakurai, T., Yanagisawa, M., van den Pol, A.N. & Shiromani, P.J. (2011) Orexin gene transfer into zona incerta neurons suppresses muscle paralysis in narcoleptic mice. *J. Neurosci.*, **31**, 6028–6040.
- Oberheim, N.A., Takano, T., Han, X., He, W., Lin, J.H., Wang, F., Xu, Q., Wyatt, J.D., Pilcher, W., Ojemann, J.G., Ransom, B.R., Goldman, S.A. & Nedergaard, M. (2009) Uniquely hominid features of adult human astrocytes. *J. Neurosci.*, **29**, 3276–3287.
- Olivadoti, M.D., Weinberg, J.B., Toth, L.A. & Opp, M.R. (2011) Sleep and fatigue in mice infected with murine gammaherpesvirus 68. *Brain Behav. Immun.*, **25**, 696–705.



- Panatier, A., Theodosis, D.T., Mothet, J.P., Touquet, B., Pollegioni, L., Poulain, D.A. & Oliet, S.H. (2006) Glia-derived D-serine controls NMDA receptor activity and synaptic memory. *Cell*, **125**, 775–784.
- Panatier, A., Vallee, J., Haber, M., Murai, K.K., Lacaillle, J.C. & Robitaille, R. (2011) Astrocytes are endogenous regulators of basal transmission at central synapses. *Cell*, **146**, 785–798.
- Pascual, O., Casper, K.B., Kubera, C., Zhang, J., Revilla-Sanchez, R., Sul, J.Y., Takano, H., Moss, S.J., McCarthy, K. & Haydon, P.G. (2005) Astrocytic purinergic signaling coordinates synaptic networks. *Science*, **310**, 113–116.
- Pelluru, D., Konadhode, R. & Shiromani, P.J. (2013) MCH neurons are the primary sleep-promoting group. *Sleep*, **36**, 1779–1781.
- Perea, G., Yang, A., Boyden, E.S. & Sur, M. (2014) Optogenetic astrocyte activation modulates response selectivity of visual cortex neurons in vivo. *Nat. Commun.*, **5**, 3262.
- Porkka-Heiskanen, T., Strecker, R.E., Thakkar, M., Bjorkum, A.A., Greene, R.W. & McCarley, R.W. (1997) Adenosine: a mediator of the sleep-inducing effects of prolonged wakefulness. *Science*, **276**, 1265–1268.
- Schummers, J., Yu, H. & Sur, M. (2008) Tuned responses of astrocytes and their influence on hemodynamic signals in the visual cortex. *Science*, **320**, 1638–1643.
- Serrano, A., Haddjeri, N., Lacaillle, J.C. & Robitaille, R. (2006) GABAergic network activation of glial cells underlies hippocampal heterosynaptic depression. *J. Neurosci.*, **26**, 5370–5382.
- Shigetomi, E., Kracun, S., Sofroniew, M.V. & Khakh, B.S. (2010) A genetically targeted optical sensor to monitor calcium signals in astrocyte processes. *Nat. Neurosci.*, **13**, 759–766.
- Shiromani, P.J., Xu, M., Winston, E.M., Shiromani, S.N., Gerashchenko, D. & Weaver, D.R. (2004) Sleep rhythmicity and homeostasis in mice with targeted disruption of mPeriod genes. *Am. J. Physiol. Reg. I.*, **287**, R47–R57.
- Ventura, R. & Harris, K.M. (1999) Three-dimensional relationships between hippocampal synapses and astrocytes. *J. Neurosci.*, **19**, 6897–6906.
- Wang, X., Lou, N., Xu, Q., Tian, G.F., Peng, W.G., Han, X., Kang, J., Takano, T. & Nedergaard, M. (2006) Astrocytic Ca<sup>2+</sup> signaling evoked by sensory stimulation in vivo. *Nat. Neurosci.*, **9**, 816–823.
- Yang, L., Qi, Y. & Yang, Y. (2015) Astrocytes control food intake by inhibiting AGRP neuron activity via adenosine A1 receptors. *Cell Rep.*, **11**, 798–807.
- Zhang, J.M., Wang, H.K., Ye, C.Q., Ge, W., Chen, Y., Jiang, Z.L., Wu, C.P., Poo, M.M. & Duan, S. (2003) ATP released by astrocytes mediates glutamatergic activity-dependent heterosynaptic suppression. *Neuron*, **40**, 971–982.