

RESEARCH

Open Access



# The genetic diversity of triticale genotypes involved in Polish breeding programs

Agnieszka Niedziela, Renata Orłowska, Joanna Machczyńska and Piotr T. Bednarek\*

## Abstract

Genetic diversity analysis of triticale populations is useful for breeding programs, as it helps to select appropriate genetic material for classifying the parental lines, heterotic groups and predicting hybrid performance. In our study 232 breeding forms were analyzed using diversity arrays technology markers. Principal coordinate analysis followed by model-based Bayesian analysis of population structure revealed the presence of weak data structuring with three groups of data. In the first group, 17 spring and 17 winter forms were clustered. The second and the third groups were represented by 101 and 26 winter forms, respectively. Polymorphic information content values, as well as Shannon's Information Index, were higher for the first (0.319) and second (0.309) than for third (0.234) group. AMOVA analysis demonstrated a higher level of within variation (86 %) than among populations (14 %). This study provides the basic information on the presence of structure within a genetic pool of triticale breeding forms.

**Keywords:** Triticale, Genetic diversity, DArT markers

## Background

Triticale (*X Triticosecale* Wittmack) is a synthetic cereal crop that originated from a cross between *Triticum* species (AABB or AABBDD) and *Secale cereale* L. (RR). It combines grain quality and productivity typical for wheat with vigor, hardiness and high lysine content specific for rye (Myer and Barnett 2004). The vigorous root system and tolerance to abiotic stresses arising from rye (Niedziela et al. 2014) allow it to grow on light sandy soils with low fertility. Triticale has a broad range of applications. Its grain is mainly used for feeding and human consumption as well as for bread and food products (Peña 2004). Moreover, triticale is a potential energy crop, and putative source of biomass for bioethanol production (Wang et al. 1997).

The history of triticale started in 1875 with the first report describing a fertile hybrid between wheat and rye issued by the Scottish botanist Wilson (Wilson 1875).

From this achievement to the first hexaploid triticales (Triticale No. 57 and Triticale No. 64) obtained by Hungarian breeder Kiss and released for commercial production passed almost 100 years (Kiss 1971). Substantial progress in triticale breeding was achieved by Tadeusz Wolski and his collaborators in 1968 (Ammar et al. 2004) who selected the first winter cultivar Lasko released in 1982. The variety became the widest grown triticale in the world. From 1987, Poland is the largest triticale maker with current production 4.3 mln tons of grain per year (<http://www.factfish.com/catalog/crop>).

Triticale hybrid breeding that started in the 1980s (Nalepa 1990) is one of the most promising directions in the species (Oettler et al. 2005) due to an efficient scheme and better control over variety distribution (Melchinger 1999). Separation of the maternal and paternal lines forms the basis of increased grain yields in hybrid breeding. Recently, cytoplasmic male sterility (CMS) system based on wheat *T. timopheevii* cytoplasm (Cauderon et al. 1985; Góral et al. 2006) replaced not allowed toxic chemical hybridization agents (Oettler et al. 2005). It was revealed that winter triticale hybrids with CMS Tt system showed 10–20 % relative midparent heterosis (MPH %)

\*Correspondence: p.bednarek@ihar.edu.pl  
Department of Plant Physiology and Biochemistry, Plant Breeding and Acclimatization Institute - National Research Institute, 05-870 Radzików, Błonie, Poland

for grain yield (Oettler et al. 2005; Góral et al. 2006). The presence of sterilizing cytoplasm affects pollen grain development making maternal lines non-fertile. However, Tt cytoplasm is easily restored (Góral et al. 2010; Stojalowski et al. 2013) what makes the identification of effective maintainers and promising parental components for crosses that produce hybrids with superior yield problematic (Góral 2002; Warzecha et al. 2014). Currently, efforts are directed towards the understanding of the genetic background of male sterility in triticale. However, little is known about genes involved in the process except for the fact that the trait is multigenic, and each of the genes explains only a small part of the phenotypic variance (Stojalowski et al. 2013). Alternatively, genetic diversity within the breeding pool, analysis of genetic structure of the available materials as well as the knowledge of putative heterotic groups (Melchinger 1999; Fischer et al. 2010a, b) is of interest for breeders.

The evaluation of genetic diversity within the available genetic pool as well as the identification of the level of structure of the pool could be the easiest way to differentiate materials for breeding program purposes. Such data could be a prerequisite for the identification of putative maintainer or parental forms (Góral et al. 2005) or selection of components for crosses (Góral et al. 2006). Based on genetic distances evaluated using microsatellite markers (Tams et al. 2004; Kuleung et al. 2006; de Costa et al. 2007; Trebichalský et al. 2013) demonstrated that triticale germplasm is of high similarity. Likewise, Kuleung et al. (2006) divided 80 triticale worldwide accessions into five clusters with the average similarity equal to 0.45. Notable similarity (0.56) was also observed among Brazilian triticale forms (de Costa et al. 2007). Based on European accessions from 13 breeding companies 15.3 % of the variation among available materials was revealed (Tams et al. 2004) indicating the limited variability of the materials. Theoretically, the larger genetic distance between crossed forms the better performance of the offspring could be predicted (Moll et al. 1965). Nevertheless, there is evidence demonstrating that crossing even closely related lines may sometimes lead to reasonable grain yield (Fernandes et al. 2015). Thus, the exploitation of genetic variation and genetic structure may not necessary deliver the final solution for breeders but could be used as a preliminary recommendation for breeding programs. The other approach is based on the formation of heterotic groups where each group exhibits similar reaction (i.e. grain yield) with the same tester (Melchinger 1999; Fischer et al. 2010a). If combined with molecular data on diversity and population structure the evaluation of such groups could be of value for breeders (Melchinger 1999). Such an approach proved to work well in the case of rye where two heterotic groups were assessed (Fischer et al.

2010a). Their exploitation had an impact on hybrid rye breeding (Fischer et al. 2010a). However, in triticale, the evaluation of such groups is only at the very initial stage (Fischer et al. 2010a, b). Nevertheless, the assignment of the lines into heterotic groups increased the performance of the hybrid population by 2.8 % compared to control group where heterotic groups were not considered (Fischer et al. 2010a, b). Independently of whether genetic diversity, population structure or heterotic groups are studied the molecular characterization of plant materials is required what could be achieved using i.e. DArT platform (Alheit et al. 2011).

The objective of the study was to estimate genetic diversity and population structure of winter and spring triticale genotypes incorporated into Polish breeding programs using DArT markers for future triticale breeding programs.

## Results

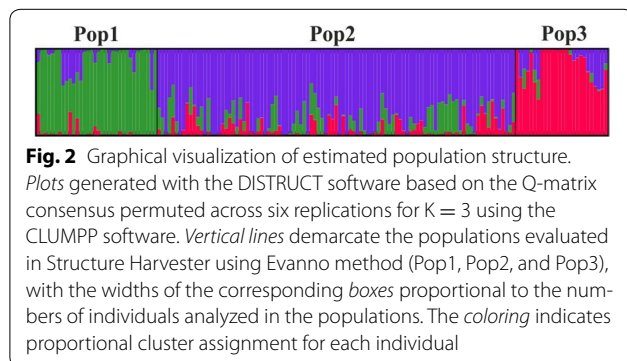
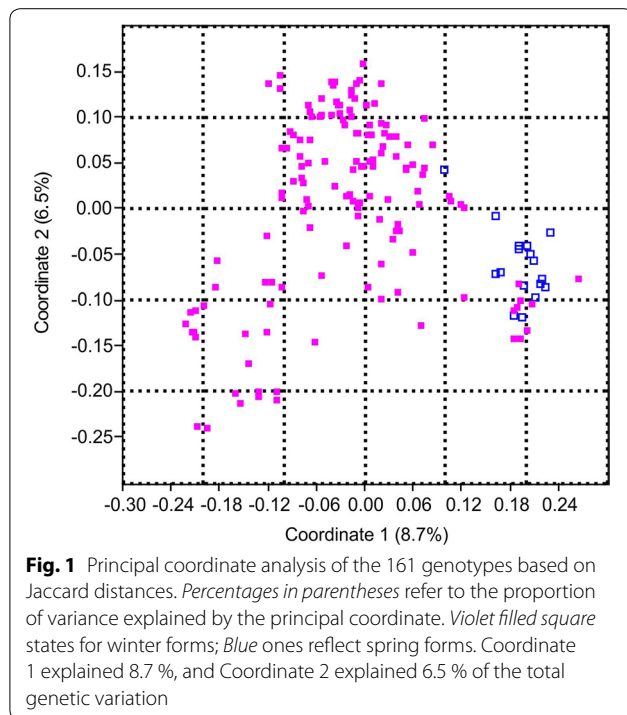
In total 3117 DArTs polymorphisms were obtained based on 232 triticale breeding forms (193 winter and 39 spring genotypes). 1275, 1582 and 260 markers developed based on wheat, rye and triticale genomes, respectively were used. After the elimination of 1279 redundant and nine rare markers (identified in <5 % of cases), their respective numbers dropped to 1829 with 760, 912 and 157 in wheat, rye, and triticale sets. Among 232 genotypes, there were 22 spring and 49 winter forms having nearly identical counterparts that were substituted by their representatives. Finally, the study was conducted on a set of 161 diverse triticale forms (17 spring and 144 winters).

Based on principal coordinate analysis (PCoA) the first two coordinates explained the only small fraction of genetic variance (8.7 and 6.5 %, respectively). Nevertheless, three groups of data represented by most spring together with some winter forms plus two putative clusters of winter forms could be recognized (Fig. 1).

Population structure analysis followed by Evanno method (Evanno et al. 2005) recorded weak stratification ( $\Delta K = 58.4$ ) with  $K$  equal to 3. Each specimen was assigned to one of the three groups (Fig. 2). In the first group (Pop1) all 17 spring forms together with 17 winter forms were clustered. The second (Pop2) and the third (Pop3) groups were represented by 101 and 26 winter forms, respectively.

The markers shared among structured genotypes were highly polymorphic for Pop1 (95.4 %) and Pop2 (97.3 %) (Table 1). Among them, 35 (Pop1) and 14 (Pop3) markers were unique for individual breeding forms. The lowest percentage of polymorphic loci was detected for Pop3 (75.6 %) with the absence of unique markers (Table 1).

The number of polymorphic markers shared by representatives of each group corresponded to 43.7, 40.7 and



30.7 % for Pop1, Pop2, and Pop3 respectively. Polymorphic information content (PIC) values varied among three groups of triticale forms (Table 1). Pop1 and Pop2 showed the highest PIC (0.319 and 0.309, respectively) whereas Pop3 the lowest (0.234). Shannon's Information

Index (I) matched PIC values and was the highest in Pop1 (0.478) and Pop2 (0.466) and the lowest in Pop3 (0.356).

AMOVA analysis of the model-based populations Pop1, Pop2, and Pop3 showed that 86 % of variance was due to within population whereas 14 % ( $p < 0.001$ ) to among-population differences. Pairwise  $\Phi_{PT}$  values indicated a high degree of differentiation between the populations Pop1 and Pop3 (0.219) and low genetic differentiation among populations Pop2 and populations Pop1 and Pop3 (0.109 and 0.138, respectively).

### Discussion

DARt is one of the marker systems adopted for the assessment of genetic diversity. The technology is considered to be efficient for getting accurate and reproducible markers, despite the low cost per data point (Jaccoud et al. 2001). However, the methodology favors the generation of redundant data due to the involvement of clones that may differ in size but have common sequences. Alternatively, markers having distinct sequences may have identical segregation patterns (Schouten et al. 2012; Raman et al. 2013). The presence of redundancy, as well as markers with low frequencies, may affect the statistical analysis and needs elimination. Up to 41 % of DARts had to be removed from the analysis due to redundancy. The infrequent (rare) markers accounted for 0.3 % of data excluded from the analysis. Such a level of redundancy is in good agreement with the data presented in barley (38 %) (Wenzl et al. 2006) or *Arabidopsis thaliana* (43 %) (Wittenberg et al. 2005). Similarly, an amount of rare markers was also congruent with the results presented by the others (Wenzl et al. 2006). Insufficient information on the pedigree of the analyzed forms (as well as on their genetic diversity) resulted in the identification of similar or nearly identical ones that were preliminary included into the set. To avoid misleading population structuring, the final set of analyzed forms was reduced to 161 genetically distinct forms.

The studies on triticale diversity showed a vast worldwide similarity of the species (Furman et al. 1997; Tams et al. 2004; Alheit et al. 2011; Trebichalský et al. 2013). Such a situation is not surprising considering the way the

**Table 1** The arrangement of population genetic characteristics evaluated for the triticale populations identified via structure analysis

Population	Sample size	Type	P %	Unique markers	PIC ± SE	I ± SE
Pop1	34	Spring and winter	95.4	35	0.319 ± 0.004	0.478 ± 0.005
Pop2	101	Winter	97.3	14	0.309 ± 0.004	0.466 ± 0.005
Pop3	26	Winter	75.6	0	0.234 ± 0.004	0.356 ± 0.006
All (mean)	161	Spring and winter	89.5	–	0.287 ± 0.002	0.433 ± 0.003

P % states for the percentage of polymorphic loci, I reflects Shannon's diversity index whereas PIC indicates polymorphic information content; SE standard error

species originated (Furman et al. 1997; Alheit et al. 2011). Both winter and spring triticale forms are closely related due to common breeding history and the presence of gene flow between both growth habits (Alheit et al. 2011). Breeders had frequently used lines from other programs as parents when developing breeding populations that resulted in a leaving out of the genetic diversity in triticale germplasm pool (Tams et al. 2004). Nevertheless, it does not lack diversity and genetic structure as indicated by data concerning European triticale (Fischer et al. 2010a, b). Our analysis demonstrated that the materials available for Polish breeders could be assigned to three groups represented by two clusters of winter forms and a group of materials encompassing winter and spring varieties as indicated by PCoA and structure analysis. However, the population structure was relatively weak indicating a limited level of differences among the groups.

It should be stressed that the analyzed spring forms were not distinguished from winter once based on PCoA and structure analysis. Lack of evident distinctiveness of spring and winter forms of triticale was demonstrated based on SSR markers (Kuleung et al. 2006). Moreover, Badea et al. (2011) and Alheit et al. (2011) found that the cultivar Matinal, classified as winter triticale, was close to the spring types. Such a grouping was explained by its pedigree that included a cross to the spring cultivar Colossal (Badea et al. 2011). The very similar explanation, at least partly, is applied in the case of our data demonstrating that five spring forms had a common winter ancestor (Additional file 1) (G. Budzianowski, personal communication, 2015). Moreover, the lack of apparent differentiation of the other spring and winter forms could be explained by common habit. In the case of Polish materials, the habitat for spring and winter forms is nearly the same. Clustering correlated with a winter or a spring habit of growth was revealed previously for triticale (Badea et al. 2011; Alheit et al. 2011), wheat (Chao et al. 2010), barley (Wang et al. 2012) and rapeseed (Bus et al. 2011). Alternatively, lack of apparent differentiation of spring and winter types could be related to the problems with marker system informativeness. However, the abovementioned explanation seems to be not the case as both polymorphic information context (PIC) as well as Shannon's Information Indexes (I) evaluated based on DArT markers were relatively high with the highest PIC value above 0.3 for Pop1 and lowest (>0.2) for Pop3. Assuming that PIC value cannot exceed 0.5 (Alheit et al. 2011) in dominant markers, and that the higher values indicate greater informativeness of the marker system (Powell et al. 1996), our results stand this criterion. Nevertheless, the average PIC (0.287) was found to be small comparing to 0.36 (Badea et al. 2011) and 0.40 (Alheit

et al. 2011) observed in studies of genetic diversity performed using DArT markers in triticale diverse worldwide accessions. However, taking into consideration the origin of the accessions (one breeding company) our results are in agreement with those of Bolibok-Bragoszewska et al. (2009) who observed lower PIC for DArTs in rye varieties from Polish breeding companies (0.27) than for wild accessions (0.39). Moreover, lower or similar PIC values for DArT markers were also observed i.e. in *Lesquerella* (0.21) (Cruz et al. 2013), *Asplenium* (0.21) (James et al. 2008), *Miscanthus* (0.22) (Tang et al. 2015), wheat (0.30) (Nielsen et al. 2014) and soybean (0.31) (Hahn and Würschum 2014), but still marker system was efficient for diversity studies.

Interestingly, DArT platform generated a high level of polymorphic markers shared by forms within each of the triticale populations evaluated via structure analysis. On the other hand, ANOVA showed that only 14 % of the variance was due to among-population differences. In that context, all our results demonstrate that the available variation among triticale forms is high enough, whereas structuring is due to a small fraction of them. Despite low value of among-population differences, which is comparable to wheat (12.41 and 15.6 %) (Mir et al. 2012; Hai et al. 2007) and barley (16.8 %) (Zhang et al. 2009), still there is enough within population variation for new varieties development. However, care needs to be taken to involve genetically diverse materials to avoid the erosion (Cowling 2013). Evidently, that seems to be the case in many Polish cultivars and breeding materials (Góral et al. 2005). Assuming the degree of diversity exhibited by Polish breeding materials comparable to that presented in European forms and the assessment of heterotic groups in that materials (Fischer et al. 2010a, b), it seems that such groups could also be elaborated for the Polish breeding pool. If heterotic groups are available one may expect an increase in grain yield up to 4 % as shown by the others (Fischer et al. 2010a, b).

## Conclusions

Triticale is one of the most successful cereals in Poland with new varieties entering the market each year ([http://www.coboru.pl/polska/Rejestr/gat\\_w\\_rej.aspx](http://www.coboru.pl/polska/Rejestr/gat_w_rej.aspx)). Unfortunately, knowledge covering genetic diversity, the population structure of gene pool and heterotic groups that constitute the base for lines, and hybrid breeding is limited; however, this could be easily achieved via marker analysis and may deliver background for the development of crosses in breeding programs.

Despite weak between population differences, the within-population variation in breeding triticale materials is high. Thus, the species preserves a relatively high level of variation to be exploited for breeding purposes;

however, breeding programs need to be supported by molecular analysis to avoid diversity reduction. One of the interesting aspects of the presented data is the fact that breeding materials from only one company subdivided into three groups. Assuming that triticale programs carried by the other companies may use distinct genotypes one should expect further subclustering of the materials. The presence of the groups is the prerequisite for the identification of heterotic groups and exploitation of their potential in hybrid breeding programs.

## Methods

### Plant material and DArT genotyping

Two hundred and thirty-two triticale breeding forms kindly delivered by breeders (Strzelce Plant Breeders Ltd., Experimental Station Małyszyn, Poland) and consisted of 193 winters and 39 spring inbred lines were used (the arrangement of the genotypes is given in Additional file 1).

The leaves were collected from single 14-day-old plant represented each line and homogenized in liquid nitrogen for DNA isolation. Total genomic DNA extraction was performed using Plant DNeasy MiniKit (Qiagen) followed by spectroscopic (NanoDrop ND-1000) measurement of its quantity. The DNA samples were subjected to 1.2 % agarose gel stained with ethidium bromide (0.1 µg/ml) in TBE buffer to verify DNA integrity.

The DArT marker analysis was provided by Triticarte Pty Ltd (Canberra, Australia; <http://www.triticarte.com.au>) using high-resolution triticale array (DArT) representing markers from wheat (wPt), rye (rPt), and triticale (tPt) according to the method described by Badea et al. (2011).

### Elimination of redundant data

For the identification of redundant markers, genetic distances among them were calculated according to Jaccard's (1908) and clustered using the unweighted paired group method with an arithmetic mean (UPGMA) method. Computations were performed in PAST Software (Hammer et al. 2001). The robustness of each node of the dendrogram was estimated by 1000 bootstrap replications of the data (Nei and Kumar 2000). The markers were assumed to be identical if the differences between them did not exceed 5 %. The profiles of such markers were merged, and missing data were completed using information from the redundant markers of the contiguous assembly. Only one representative of the given redundant marker assembly was retained, and information on the removed markers was saved for further purposes. Rare alleles with low frequency (>95 %) along the individual profile were removed.

The data was also checked for the presence of identical or similar plant forms using agglomeration analysis (UPGMA) and Jaccard genetic distance in PAST software. The forms were assumed to be identical if the differences between them did not exceed 5 % and if their molecular profiles, except when missing markers, were identical. The profiles of such individuals were merged.

### Structure analysis

Preliminary visualization of putative structure among triticale breeding forms was calculated by the data from all non-redundant individuals and non-redundant markers. For this purpose, PCoA (Gower 1966) based on the Jaccard distances were performed with PAST software.

The population structure was evaluated using Bayesian analysis of the genetic structure (K) carried out with STRUCTURE 2.2.3 (Pritchard et al. 2000). Admixture model and allele frequencies correlated model were used. Each simulation was run using burn-in and MCMC (Markov Chain Monte Carlo) lengths of 100,000. The range of possible K was tested from 1 to 6. Six independent runs for each tested K were performed. The most likely number of K was evaluated following Evanno approach (Evanno et al. 2005) implemented in Structure Harvester software (Earl and von Holdt 2012). The averaged genetic structure was estimated in CLUMPP (Jakobsson and Rosenberg 2007). Six Q matrices were obtained in STRUCTURE for the given K. Graphical display of population structure was evaluated as an individual Q-matrix with Distruct1.1 software (Rosenberg 2004).

### Genetic diversity estimation

Basic indices of genetic diversity, including the percentages of polymorphic markers (P %), the number of unique markers, Shannon's Diversity Index (I) (Shannon and Weaver 1949) were calculated in GenALEX 5.3 EXCEL add-in (Peakal and Smouse 2001). Polymorphic information content (PIC) of dominant bi-allelic data was estimated by the formula:  $PIC = 1 - (p^2 + q^2)$ , where "p" is the frequency of present alleles and "q" is the frequency of null alleles (for diploid binary data and assuming Hardy-Weinberg Equilibrium,  $q = (1 - \text{Band Freq.}) * 0.5$  and  $p = 1 - q$ ) (Alheit et al. 2011).

Analysis of molecular variance—AMOVA ( $\Phi_{PT}$  index values) was performed with GenAlex using 999 permutations test to estimate the reliability of the data.

### Additional file

**Additional file 1.** Triticale winter (W) and spring (S) breeding forms.

## Abbreviations

AMOVA: analysis of molecular variance; DArT: diversity arrays technology; I: Shannon's Information Indexes; PCoA: principal coordinate analysis; PIC: polymorphic information content; UPGMA: unweighted pair group method with arithmetic mean.

## Authors' contributions

PTB conceived and designed the research. AN, RO and JM conducted the experiments. AN and PTB carried out the analysis. AN and PTB wrote the manuscript. All authors read and approved the final manuscript.

## Acknowledgements

The authors thank Grzegorz Budzianowski from Strzelce Plant Breeders Ltd., Experimental Station Małyszyn for making available seeds and supplying pedigree information.

## Competing interests

The authors declare that they have no competing interests.

Received: 15 September 2015 Accepted: 14 March 2016

Published online: 22 March 2016

## References

- Alheit KV, Reif JC, Maurer HP, Hahn V, Weissmann EA, Miedaner T, Würschum T (2011) Detection of segregation distortion loci in triticale (x *Triticosecale* Wittmack) based on a high-density DArT marker consensus genetic linkage map. *BMC Genom* 12:380
- Ammar K, Mergoum M, Rajaram S (2004) The history and evolution of triticale. In: Mergoum M, Gómez-Macpherson H (eds) *Triticale improvement and production*. Food and Agriculture Organization of the United Nations, Rome, pp 1–10
- Badea A, Eudes F, Salmon D, Tuvesson S, Vrolijk A, Larsson C-T, Caig V, Huttner E, Kilian A, Laroche A (2011) Development and assessment of DArT markers in triticale. *Theor Appl Genet* 122:1547–1560
- Bolibok-Bragoszewska H, Heller Uszyńska K, Wenzl P, Uszyński G, Kilian A, Rakoczy-Trojanowska M (2009) DArT markers for the rye genome—genetic diversity and mapping. *BMC Genom* 10:578
- Bus A, Körber N, Snowdon RJ, Stich B (2011) Patterns of molecular variation in a species-wide germplasm set of *Brassica napus*. *Theor Appl Genet* 123:1413–1423
- Cauderon Y, Cauderon A, Gay G, Roussel J (1985) Alloplasmic lines and nucleocytoplasmic interactions in triticale. In: *Proceedings of the Eucarpia meeting: genetics and breeding of triticale*. Clermont-Ferrand, France, 2–5 July 1984, INRA, Paris, pp 177–191
- Chao C, Dubcovsky J, Dvorak J, Luo M-C, Baenziger SP, Matnyazov R, Clark DR, Talbert LE, Anderson JA, Dreisigacker S, Glover K, Chen J, Campbell K, Bruckner PL, Rudd JC, Haley S, Carver BF, Perry S, Sorrells ME, Akhunov ED (2010) Population- and genome-specific patterns of linkage disequilibrium and SNP variation in spring and winter wheat (*Triticum aestivum* L.). *BMC Genom* 11:727
- Cowling WA (2013) Sustainable plant breeding. *Plant Breed* 132:1–9
- Cruz M, Kilian A, Dierig DA (2013) Development of DArT marker platforms and genetic diversity assessment of the U.S. collection of the new oilseed crop *Lesquerella* and related species. *PLoS One* 8:e64062
- De Costa CT, Albuquerque ACS, do Nascimento Junior A, Marcelino FC, Pereira JF (2007) Genetic diversity of Brazilian triticales evaluated with genomic wheat microsatellites. *Pesqui Agropecu Bras* 42:1577–1586
- Earl DA, von Holdt BM (2012) Structure Harvester: a website and program for visualizing structure output and implementing the Evanno method. *Conserv Genet Resour* 4:359–361
- Evanno G, Regnault S, Goudet J (2005) Detecting the number of clusters of individuals using the software structure. A simulation study. *Mol Ecol* 14:2611–2620
- Fernandes EH, Schuster I, Scapim CA, Vieira ESN, Coan MMD (2015) Genetic diversity in elite inbred lines of maize and its association with heterosis. *Genet Mol Res* 14:6509–6517
- Fischer S, Maurer HP, Würschum T, Möhring J, Piepho H-P, Schön CC, Thiemt E-M, Dhillon BS, Weissmann EA, Melchinger AE, Reif JC (2010a) Development of heterotic groups in triticale. *Crop Sci* 50:584–590
- Fischer S, Melchinger AE, Korzun V, Wilde P, Schmiedchen B, Möhring J, Piepho H-P, Dhillon BS, Würschum T, Reif JC (2010b) Molecular marker assisted broadening of the Central European heterotic groups in rye with Eastern European germplasm. *Theor Appl Genet* 120:291–299
- Furman BJ, Qualset CO, Skovmand B, Heaton JH, Corke H, Wesenberg DM (1997) Characterisation and analysis of North American triticale genetic resources. *Crop Sci* 37:1951–1959
- Góral H (2002) Production of triticale (x *Triticosecale* Wittm.) hybrid seeds using the sterilizing cytoplasm of *Triticum timopheevi*. *Cereal Res Commun* 30:31–38
- Góral H, Tyrka M, Spiss L (2005) Assessing genetic variation to predict the breeding value of winter triticale cultivars and lines. *J Appl Genet* 46:125–131
- Góral H, Warzecha T, Stojalowski S, Pojmaj M, Kurlito D, Trąbka A, Spiss L (2006) Stability of male sterility and fertility restoration in the CMST. *timopheevi* system in triticale. *Folia Univ Agric Stetin* 247:55–62
- Góral H, Stojalowski S, Tyrka M, Wędzony M (2010) Inheritance of fertility restoration in winter triticale with cytoplasm of *Triticum timopheevi*. *Folia Univ Agric Stetin* 276:11–18
- Gower JC (1966) Some distance properties of latent root and vector methods used in multivariate data analysis. *Biometrika* 53:315–328
- Hahn V, Würschum T (2014) Molecular genetic characterization of Central European soybean breeding germplasm. *Plant Breed* 133:748–755
- Hai L, Wagner C, Friedt W (2007) Quantitative structure analysis of genetic diversity among spring bread wheats (*Triticum aestivum* L.) from different geographical regions. *Genetica* 130:213–225
- Hammer Ø, Harper DAT, Ryan PD (2001) PAST: paleontological statistics software package for education and data analysis. *Palaeontol Electron* 4:1–9
- Jaccard P (1908) Nouvelles recherches sur la distribution florale. *Bul Soc Vaudoise Sci Nat* 44:223–270
- Jaccoud D, Peng K, Feinstein D, Kilian A (2001) Diversity arrays: a solid state technology for sequence information independent genotyping. *Nucleic Acids Res* 29:E25
- Jakobsson M, Rosenberg NA (2007) CLUMPP: a cluster matching and permutation program for dealing with label switching and multimodality in analysis of population structure. *Bioinformatics* 23:1801–1806
- James KE, Schneider H, Ansell SW, Evers M, Robba L, Uszynski G, Pedersen N, Newton AE, Russell SJ, Vogel JC, Kilian A (2008) Diversity arrays technology (DArT) for pan-genomic evolutionary studies of non-model organisms. *PLoS One* 3:e1682
- Kiss A (1971) Origin of the preliminary released Hungarian hexaploid varieties, No. 57 and 64. *Wheat Info Serv* 32:20–22
- Kuleung C, Baenziger PS, Kachman SD, Dweikat I (2006) Evaluating the genetic diversity of triticale with wheat and rye SSR markers. *Crop Sci* 46:1692–1700
- Melchinger AE (1999) Genetic diversity and heterosis. In: Coors JG, Pandey S (eds) *The genetics and exploitation of heterosis in crops*. ASA, CSSA, and SSSA, Madison, pp 99–118
- Mir RR, Kumar J, Balyan HS, Gupta PK (2012) A study of genetic diversity among Indian bread wheat (*Triticum aestivum* L.) cultivars released during last 100 years. *Genet Resour Crop Evol* 59:717–726
- Moll RH, Lonnquist JH, Wlez Fortunio J, Johnson EC (1965) The relationship of heterosis and genetic divergence in maize. *Genetics* 52:139–144
- Myer RO, Barnett RD (2004) Triticale grain in swine diets. <http://edis.ifas.ufl.edu.AS37>
- Nalepa S (ed) (1990) Hybrid triticale: present and future. In: *Proceedings of the second international triticale symposium*, Passo Fundo, Rio Grande do Sul, Brasil, 1–5 October, Mexico, CIMMYT, pp 402–407
- Nei M, Kumar S (2000) *Molecular evolution and phylogenetics*. Oxford University Press, New York
- Niedziela A, Bednarek PT, Labudda M, Mańkowski DR, Anioł A (2014) Genetic mapping of a 7R AI tolerance QTL in triticale (x *Triticosecale* Wittmack). *J Appl Genet* 55:1–14
- Nielsen NH, Backes G, Stougaard J, Andersen SU, Jahoor A (2014) Genetic diversity and population structure analysis of European hexaploid bread wheat (*Triticum aestivum* L.) varieties. *PLoS One* 9:e94000

- Oettler GS, Tams H, Utz HF, Bauer E, Melchinger AE (2005) Prospects for hybrid breeding in winter triticale: I. Heterosis and combining ability for agronomic traits in European elite germplasm. *Crop Sci* 45:1476–1482
- Peakal R, Smouse PE (2001) GenAlEx V5: genetic analysis in excel. Population genetic software for teaching and research. Australian National University, Canberra, Australia. <http://www.anu.edu.au/BoZo/GenAlEx/>
- Peña RJ (2004) Food uses of triticale. In: Mergoum M, Gómez-Macpherson H (eds) Triticale improvement and production. Food and Agriculture Organization of the United Nations, Rome, pp 37–48
- Powell W, Morgante M, Andre C, Hanafey M, Vogel J, Tingey S, Rafalski A (1996) The comparison of RFLP, RAPD, AFLP and SSR (microsatellite) markers for germplasm analysis. *Mol Breed* 2:225–238
- Pritchard JK, Stephens M, Rosenberg NA, Donnelly P (2000) Association mapping in structured populations. *Am J Hum Genet* 67:170–181
- Raman H, Raman R, Kilian A (2013) A consensus map of rapeseed (*Brassica napus* L.) based on diversity array technology markers: applications in genetic dissection of qualitative and quantitative traits. *BMC Genom* 14:277
- Rosenberg NA (2004) Distruct: a program for the graphical display of population structure. *Mol Ecol Notes* 4:137–138
- Schouten HJ, van de Weg WE, Carling J, Khan SA, McKay SJ, van Kaauwen MPW, Wittenberg AHJ, Koehorst-van Putten HJJ, Noordijk Y, Gao Z, Rees DJG, Van Dyk MM, Jaccoud D, Considine MJ, Kilian A (2012) Diversity arrays technology (DArT) markers in apple for genetic linkage maps. *Mol Breed* 29:645–660
- Shannon CE, Weaver W (1949) A mathematical model of communication. University of Illinois Press, Urbana, pp 623–656
- Stożalowski S, Bobrowska A, Hanek M, Myśków B (2013) The importance of chromosomes from the sixth homeologous group in the restoration of male fertility in winter triticale with *Triticum timopheevii* cytoplasm. *J Appl Genet* 54:179–184
- Tams SH, Bauer E, Oettler G, Melchinger AE (2004) Genetic diversity in European winter triticale determined with SSR markers and coancestry coefficient. *Theor Appl Genet* 108:1385–1391
- Tang J, Daroch M, Kilian A, Jezowski S, Pogrzeba M, Mos M (2015) DArT-based characterisation of genetic diversity in a Miscanthus collection from Poland. *Planta* 242:985–996
- Trebichalský A, Balážová Z, Gálová Z, Chňápek M, Tomka M (2013) Detection of genetic diversity of triticale by microsatellite markers. *JMBFS* 2:1898–1906
- Wang S, Thomas KC, Ingledew WM, Sosulski K, Sosulski FW (1997) Rye and triticale as feedstock for fuel ethanol production. *Cereal Chem* 74:621–625
- Wang M, Jiang N, Jia T, Leach L, Cockram J, Waugh R, Ramsay L, Thomas B, Luo Z (2012) Genome-wide association mapping of agronomic and morphological traits in highly structured populations of barley cultivars. *Theor Appl Genet* 124:233–246
- Warzecha T, Sutkowska A, Góral H (2014) Male sterility of triticale lines generated through recombination of triticale and rye maintainers. *SJAR* 12:1124–1130
- Wenzl P, Li H, Carling J, Zhou M, Raman H, Paul E, Hearnden P, Maier C, Xia L, Caig V, Ovesná J, Cakir M, Poulsen D, Wang J, Raman R, Smith KP, Muehlbauer GJ, Chalmers KJ, Kleinohs A, Huttner E, Kilian A (2006) A high-density consensus map of barley linking DArT markers to SSR, RFLP and STS loci and agricultural traits. *BMC Genom* 7:206
- Wilson AS (1875) On wheat and rye hybrids. *Trans Proc Bot Soc* 12:286–288
- Wittenberg AH, van der Lee T, Cayla C, Kilian A, Visser RG, Schouten HJ (2005) Validation of the high-throughput marker technology DArT using the model plant *Arabidopsis thaliana*. *Mol Genet Genomics* 274:30–39
- Zhang LY, Marchand S, Tinker NA, Belzile F (2009) Population structure and linkage disequilibrium in barley assessed by DArT markers. *Theor Appl Genet* 119:43–52

Submit your manuscript to a SpringerOpen® journal and benefit from:

- Convenient online submission
- Rigorous peer review
- Immediate publication on acceptance
- Open access: articles freely available online
- High visibility within the field
- Retaining the copyright to your article

---

Submit your next manuscript at ► [springeropen.com](http://springeropen.com)

---