



Molecular Mechanisms for Vascular Development and Secondary Cell Wall Formation

Jung Hyun Yang¹ and Huanzhong Wang^{1,2*}

¹ Department of Plant Science and Landscape Architecture, University of Connecticut, Storrs, CT, USA, ² Institute for Systems Genomics, University of Connecticut, Storrs, CT, USA

Vascular tissues are important for transporting water and nutrients throughout the plant and as physical support of upright growth. The primary constituents of vascular tissues, xylem, and phloem, are derived from the meristematic vascular procambium and cambium. Xylem cells develop secondary cell walls (SCWs) that form the largest part of plant lignocellulosic biomass that serve as a renewable feedstock for biofuel production. For the last decade, research on vascular development and SCW biosynthesis has seen rapid progress due to the importance of these processes to plant biology and to the biofuel industry. Plant hormones, transcriptional regulators and peptide signaling regulate procambium/cambium proliferation, vascular patterning, and xylem differentiation. Transcriptional regulatory pathways play a pivot role in SCW biosynthesis. Although most of these discoveries are derived from research in *Arabidopsis*, many genes have shown conserved functions in biofuel feedstock species. Here, we review the recent advances in our understanding of vascular development and SCW formation and discuss potential biotechnological uses.

OPEN ACCESS

Edited by:

Samuel P. Hazen,
University of Massachusetts, USA

Reviewed by:

Biswapriya Biswas Misra,
University of Florida, USA
Annelie Carlsbecker,
Uppsala University, Sweden

*Correspondence:

Huanzhong Wang
huanzhong.wang@uconn.edu

Specialty section:

This article was submitted to
Plant Biotechnology,
a section of the journal
Frontiers in Plant Science

Received: 07 January 2016

Accepted: 07 March 2016

Published: 22 March 2016

Citation:

Yang JH and Wang H (2016)
Molecular Mechanisms for Vascular
Development and Secondary Cell Wall
Formation. *Front. Plant Sci.* 7:356.
doi: 10.3389/fpls.2016.00356

Keywords: vascular, secondary cell wall, development, transcriptional regulation, *Arabidopsis*

INTRODUCTION

Plant vascular tissues are composed of xylem, phloem and the intervening procambial or cambial cells (Eames and MacDaniels, 1947). The proliferation of stem cells in the vascular meristem produces progeny cells, which either maintain their stem cell property or differentiate into xylem toward the center and phloem toward the periphery of plant stems (Elo et al., 2009; Miyashima et al., 2013; Jouannet et al., 2015). During the differentiation process, xylem fibers and tracheary elements (TEs), including vessels and tracheids, develop secondary cell walls (SCW; Ohashi-Ito and Fukuda, 2014). The development of TEs and xylary fibers undergoes a programmed cell death (PCD) process (Schuetz et al., 2013). Compared to the thin primary cell walls, the SCW is much thicker and accounts for the majority of cellulosic biomass that serves as a renewable resource for biofuel production (Demura and Ye, 2010; Carpita, 2012).

Our understanding of vascular development including hormonal response, peptide signaling, and transcriptional regulation has advanced significantly since the publication of a few recent reviews (Kondo et al., 2014b; Ruzicka et al., 2015). Rapid progress have also been made in the genetic regulation of SCW biosynthesis due to the growing interest in clean bioenergy and biofuels (Somerville, 2007; Carroll and Somerville, 2009; Pauly and Keegstra, 2010). In fact, vascular development and SCW formation are closely related biological processes that can be regulated by the same signaling pathway (Ito et al., 2006; Etchells and Turner, 2010). In this mini-review, we focus on progress in elucidating the regulatory pathways involved in vascular development, xylem differentiation and SCW deposition.

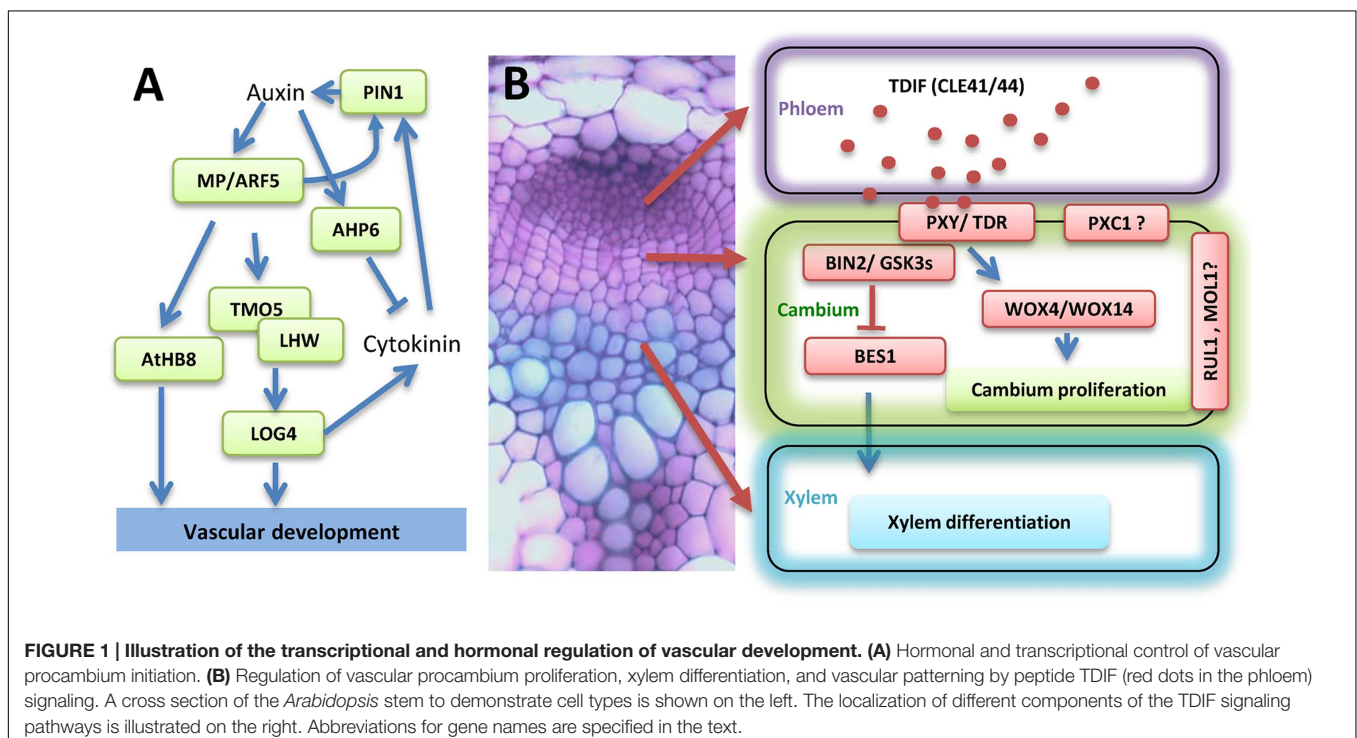
THE INITIATION OF VASCULAR PROCAMBIUM

Plant stems contain most of the collectable terrestrial biomass, but the study of vascular procambium initiation in the stem is impeded because these cells are imbedded under layers of other tissues and are difficult to access. Most of the current knowledge on procambium initiation and regulation is derived from studies in embryos, root apical meristems, and leaf venation systems. Some of the genes and signaling pathways, such as the Class III homeodomain leucine zipper (HD-ZIP III) and the CLAVATA 3 (CLV3)/EMBRYO SURROUNDING REGION (ESR) related (CLE) signaling pathway, function in multiple tissues, and therefore appear to be more broadly involved in procambium development in general (Zhang et al., 2014; Ruzicka et al., 2015). The vascular procambium develops during embryogenesis and determines vascular patterning in postembryonic growth. In early globular embryos, division of the four inner cells generates procambial/provascular initials (Hardtke and Berleth, 1998; Berleth et al., 2000; Jouannet et al., 2015). These initial cells further divide periclinally, increase in number and form the first vascular strands in a pattern similar to what is later observed in young seedlings. During postembryonic development, the initiation of procambial strands in leaf primordia and root meristems are extensively studied and reviewed elsewhere (Cano-Delgado et al., 2010; Kondo et al., 2014b; Jouannet et al., 2015; Ruzicka et al., 2015).

The plant hormone auxin, mainly indole acetic acid (IAA), regulates the initiation of vascular procambial cells. Mutation of the auxin responsive transcription factor (TF) *AUXIN RESPONSE FACTOR 5* (*ARF5*)/*monopteros* (*MP*) inhibits

vascular procambial cell formation in embryos (Hardtke and Berleth, 1998) (**Figure 1A**). The expression of *ARF5/MP* is restricted to the provascular initials (Hamann et al., 2002). Furthermore, the expression of *ARF5/MP* is upregulated in the developing procambium cells and is preceded by auxin accumulation (Hardtke and Berleth, 1998). *ARF5/MP* binds to the promoter of *ARABIDOPSIS THALIANA HOMEBOX 8* (*ATHB8*) and directly regulate its expression through an auxin responsible element (ARE, TGTCTG; Donner et al., 2009). In addition to auxin signaling, auxin transport is also important to procambium development. During embryogenesis, the auxin efflux carrier PIN-FORMED1 (*PIN1*) protein is polarly localized in the inner cells of the pre-procambium (Friml, 2003). The expression level of *PIN1* is dramatically reduced in *mp* mutant plants (Wenzel et al., 2007), suggesting that *MP* may regulate *PIN1* at the transcriptional level (**Figure 1A**). TARGET OF MONOPTEROS 5 (*TMO5*), a basic helix-loop-helix (bHLH) TF, is identified as a direct target of *ARF5/MP*. *TMO5* is expressed in procambium initials in globular stage embryos, and is restricted to the xylem precursor cells in the postembryonic root (Schlereth et al., 2010). *TMO5* physically interacts with another bHLH TF LONESOME HIGHWAY (*LHW*) to control the periclinal divisions (De Rybel et al., 2013; Ohashi-Ito et al., 2013). Ectopic expression of *TMO5* and *LHW* causes periclinal cell divisions in other tissues, indicating conserved functions of the *TMO5/LHW* dimer (De Rybel et al., 2013).

Cytokinin (CK) is another major plant hormone that is critical to procambium initiation. The direct downstream target of *TMO5/LHW* dimer was identified as *LOG4* (**Figure 1A**), a rate-limiting enzyme in CK biosynthesis (De Rybel et al., 2014; Ohashi-Ito et al., 2014). In the *Arabidopsis* root procambium, CK



promotes the bisymmetric distribution of PIN1 and PIN7, and as a result, channels auxin toward the axis of xylem precursor cells. In contrast, auxin positively regulates the expression of an inhibitor of CK signaling, *AHP6* (Figure 1). This mutually inhibitory feedback loop between auxin and CK sets distinct boundaries and defines the organization of the root vascular cylinder (Bishopp et al., 2011). In addition to auxin and CK, other hormones may also play a role in procambium initiation (Jouannet et al., 2015; Ruzicka et al., 2015). The aforementioned hormonal regulations were derived from studies in embryos and roots. It would be interesting to investigate how perturbation of these pathways affect procambium and cambium development in stems.

THE DEVELOPMENT OF VASCULAR TISSUES IN THE *Arabidopsis* STEM

The Development and Patterning of the Vascular Bundle

Vascular bundles of the *Arabidopsis* stem are organized in a collateral pattern with the procambium located between xylem and phloem tissues. During secondary growth, vascular cambia develop in both fascicular (vascular bundles) and interfascicular regions and form a continuous ring, during which process auxin plays a critical role (Mazur et al., 2014). Class III homeodomain leucine zipper (HD-ZIP III) genes, i.e., *ATHB8*, *PHABULOSA* (*PHB*), *PHAVOLUTA* (*PHV*), *REVOLUTA* (*REV*), and *ATHB15*, regulate vascular tissue development and adaxial-abaxial patterning in *Arabidopsis*. These genes are shown to be induced by auxin (Donner et al., 2009; Ursache et al., 2014). These HD-ZIP III TFs promote adaxialization and cause the formation of amphivasal bundles (phloem surrounded by xylem) in gain of function mutants (McConnell et al., 2001). In contrast, amphicribal vasculature (xylem surrounded by phloem) were observed in loss of function mutants of HD-ZIP III genes, such as in the triple mutant of *phb phv rev* (Emery et al., 2003). The function of *AtHB15* may be different from its family members, especially *REV*. The triple mutant *phb phv athb15* develops amphivasal vasculature that is opposite to the *phb phv rev* (Green et al., 2005; Prigge et al., 2005). The expression of HD-ZIP III TFs is regulated by micro-RNA 165/166 (*miR165/166*). Activation tagging of *miR165b*, *miR166a*, and *miR166g* promote the cleavage of the transcripts of *PHB*, *PHV*, and *AtHB15* resulting in internalized amphivasal bundles (Kim et al., 2005; Williams et al., 2005; Du et al., 2015). The transcripts of *REV* and *ATHB8* are less affected by activation tagging of *miR165/166* due to unknown mechanisms (Du and Wang, 2015).

The Proliferation and Maintenance of Vascular Procambium

The proliferation of vascular procambium and subsequently xylem differentiation is regulated by a CLE peptide signaling. In *Arabidopsis*, *CLE41* and *CLE44* encode the dodeca-peptide TE differentiation inhibition factor (TDIF), which activity was originally identified from a *Zinnia* cell culture system (Ito

et al., 2006). TDIF is synthesized in the phloem, diffuses into the cambial tissue, and binds to its receptor, a leucine-rich repeat receptor like kinase (LRR-RLKs) named PHLOEM INTERCALATED WITH XYLEM (PXY; Ito et al., 2006; Fisher and Turner, 2007; Hirakawa et al., 2008). TDIF signaling activates the expression of *WUSCHEL-RELATED HOMEODOMAIN 4* (*WOX4*) and *WOX14*, resulting in the promotion of cambial cell proliferation (Hirakawa et al., 2010; Etchells et al., 2013) (Figure 1B). Mutation of *WOX4* represses procambium proliferation in the hypocotyl of 7-day-old seedlings (Hirakawa et al., 2010; Etchells et al., 2013). However, overexpression of *WOX4* does not significantly increase procambial cell proliferation in *Arabidopsis* hypocotyls (Hirakawa et al., 2010). It is possible that other factors, such as HAIRY MERISTEM (*HAM*; Zhou et al., 2015), are required for *WOX4* function. *HAM* family TFs act as conserved interacting cofactors with *WOX* proteins and may be essential for all stem cell niches in plant (Zhou et al., 2015). The TDIF peptide also regulates vascular tissue organization as overexpression of *CLE41* or *CLE44* with a ubiquitous promoter or a xylem specific promoter leads to a loss of cell division orientation (Etchells and Turner, 2010). Three other LRR-RLKs, *PXY-CORRELATED 1* (*PXC1*), *MORE LATERAL GROWTH 1* (*MOL1*) and *REDUCED IN LATERAL GROWTH 1* (*RUL1*) were shown to be involved in regulating cambium activity (Agusti et al., 2011; Wang et al., 2013). Further analysis of these receptor like kinases may help to better understand the maintenance of procambial and cambium cells (Figure 1B).

The Differentiation of Xylem Cells

The mechanism of how TDIF-TDR signaling represses xylem differentiation was revealed recently. BRASSINOSTEROID-INSENSITIVE 2 (*BIN2*) was identified as an interacting partner of TDR/PXY in a yeast two-hybrid screening (Kondo et al., 2014a). *BIN2* is a Glycogen Synthase Kinase 3 (*GSK3*) protein and is directly associated with TDR/PXY at the plasma membrane. *BES1* (*BRI-EMS-SUPPRESSOR 1*) is one of the *BIN2* downstream TFs in the brassinosteroid (*BR*) signaling pathway (Li and Nam, 2002; Yin et al., 2002), and positively regulates xylem cell differentiation (Kondo et al., 2015). TDIF binding to its receptor TDR/PXY disassociates *BIN2* from the complex, suppresses the function of *BES1*, and subsequently inhibits xylem formation (Kondo et al., 2014a).

TRANSCRIPTIONAL REGULATION OF SCW DEVELOPMENT

Secondary cell wall deposition is regulated by a large number of TFs through both hierarchical and non-hierarchical regulatory networks (Wang and Dixon, 2012; Zhong and Ye, 2015). At least three layers of regulators, including NAC (NO APICAL MERISTEM, *ATAF1*, *ATAF2*, and *CUP-SHAPED COTYLEDON 2*) domain master regulators in tier 3, two MYB domain regulators in tier 2 and many other regulators in tier 1, are directly involved in regulating SCW biosynthetic genes (Figure 2).

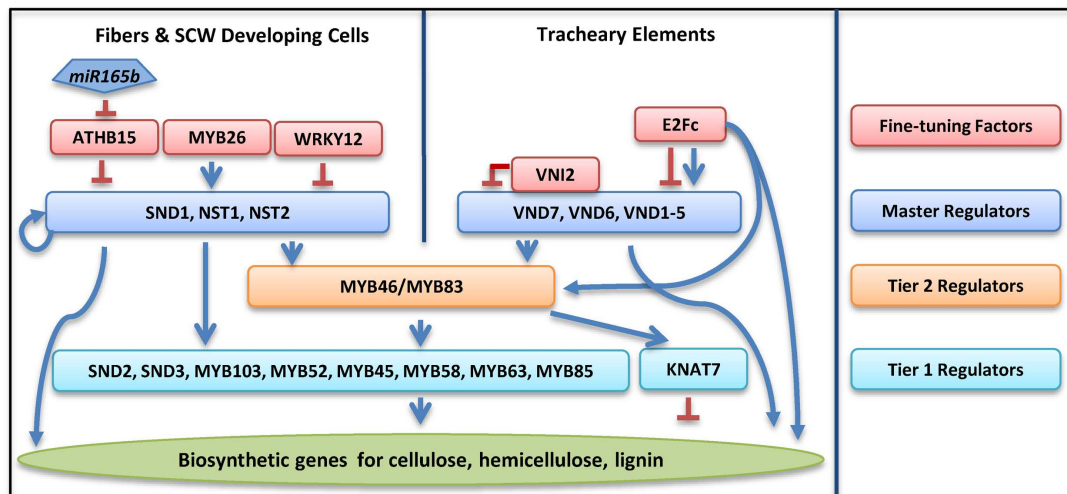


FIGURE 2 | Transcriptional regulatory networks in regulating secondary cell wall biosynthesis in *Arabidopsis thaliana*. Colored rectangles represent transcription factors in different tiers as specified in the column on the right. Blue arrows denote positive regulation, while a red line with blunt ends denotes negative regulation.

The NAC Domain (Tier 3) Master Regulators

Three NAC domain TFs are defined as master regulators for their function in regulating all three components, i.e., cellulose, hemicellulose, and lignin biosynthesis in xylary fibers (Wang et al., 2011; Wang and Dixon, 2012; Zhong and Ye, 2015). These three NACs are *NAC SECONDARY WALL THICKENING PROMOTING FACTOR 1* (*NST1*), *NST2*, and *NST3/SECONDARY WALL-ASSOCIATED NAC DOMAIN PROTEIN 1* (*SND1*; Zhong et al., 2006, 2007b; Mitsuda et al., 2007). The SCW deposition is disturbed in the vascular and interfascicular fibers of the *nst1nst3* double knockout plants, while ectopic overexpression of *NST1* or *SND1* leads to ectopic SCW formation in a variety of tissues (Zhong et al., 2006, 2007b; Mitsuda et al., 2007). In *Arabidopsis* anther endothecium, secondary wall thickening is controlled by *NST1* and *NST2* (Mitsuda et al., 2005). In xylem vessels, VASCULAR-RELATED NAC DOMAIN (VND) proteins regulate both SCW biosynthesis and PCD (Yamaguchi et al., 2010a). *VND6* and *VND7* positively regulate xylem vessel differentiation (Kubo et al., 2005). In *Arabidopsis*, ectopic expression of *VND6* and *VND7* triggers metaxylem and protoxylem formation, respectively (Kubo et al., 2005; Yamaguchi et al., 2010a). *VND6* and *VND7* activate the expression of a broad range of genes involved in PCD, such as xylem-specific papain-like cysteine peptidase (*XCP1*; Funk et al., 2002; Yamaguchi et al., 2011). Other VND family members, i.e., *VND1* to *VND5*, function redundantly with *VND6* and *VND7* in vessel development (Zhou et al., 2014).

The MYB Domain Second Level (Tier 2) Regulators

MYB46 and *MYB83* are the second level regulators downstream of the NAC domain master regulators (Zhong et al., 2007a;

Zhong and Ye, 2012). *SND1* directly binds to the promoter of *MYB46* and activates its expression (Zhong et al., 2007a; Wang et al., 2011). Overexpression of *MYB46* or *MYB83* leads to overaccumulation of all three major SCW components, indicating that both of these MYBs also function as master switches (Zhong et al., 2007a; Zhong and Ye, 2012). These MYBs are also direct targets for *VND6* and *VND7* (Ohashi-Ito et al., 2010; Yamaguchi et al., 2011), indicating that they are important for SCW formation in both vessels and xylary fibers. Consistent with this observation, simultaneous knockout of *MYB46* and *MYB83* results in a more severe phenotype than those observed from the *nst1nst3* double mutant (Zhong and Ye, 2012).

Other Regulators (Tier 1) for SCW Biosynthesis

Many other TFs function downstream the NAC and MYB domain master regulators (Zhong et al., 2008; Ko et al., 2009). Among these regulators, *SND2*, *SND3*, and *MYB103*, are able to induce the expression of cellulosic synthesis genes and increase SCW thickening in fibers (Zhong et al., 2008; Hussey et al., 2011). Repression of these three genes, as well as three other MYB TFs, *MYB52*, *MYB54*, and *MYB85* reduced cell wall thickness, supporting the idea that these genes are positive regulators for SCW synthesis (Zhong et al., 2008). Overexpression of *MYB52* and *MYB54* upregulate the expression of *CELLULOSE SYNTHASE 8* (*CesA8*), *IRREGULAR XYLEM 9* (*IRX9*), and *4-COUMARATE-COA LIGASE* (*4CL*), genes responsible for the synthesis of cellulose, hemicellulose, and lignin, respectively (Zhong et al., 2008). Three MYB TFs, *MYB58*, *MYB63*, and *MYB85*, have been suggested to directly regulate lignin biosynthesis in *Arabidopsis* (Zhong et al., 2008; Zhou et al., 2009). Many regulators in tier 1 are positively regulated by both tier 3 master regulators and tier 2 regulators (Zhong et al., 2008; Ko et al., 2009; Kim et al., 2014; Zhong and Ye, 2014).

Fine-Tuning of the SCW Regulatory Network

There are some TFs that do not appear to easily fit into SCW-related regulatory networks, which are primarily under feed forward regulation (Taylor-Teeple et al., 2015). *KNOTTED ARABIDOPSIS THALIANA7 (KNAT7)* is identified as a negative regulator of SCW synthesis. In the *knat7* knockout mutant, irregular xylem vessel formation was observed, but the interfascicular fibers developed thicker SCW (Li et al., 2012). *KANT7* is induced by overexpression of *MYB85* and several NAC master regulators (Zhong et al., 2008). The mechanism of *KANT7* in regulating SCW biosynthesis is still unclear. Another TF *XYLEM NAC DOMAIN 1 (XND1)* regulates SCW deposition and PCD in xylem, but it is not clear how this gene interacts with other members in regulatory pathways (Zhao et al., 2008). Three MYB TFs, *MYB4*, *MYB7*, and *MYB32*, are negative regulators for the NAC domain master regulators, while the expression of these three MYB genes are positively regulated by the tier2 master regulator *MYB46* (Zhong et al., 2008; Ko et al., 2009; Wang and Dixon, 2012; Zhang et al., 2014). These negative regulators may be important to SCW synthesis by providing flexibility under undesirable growth conditions (Jin et al., 2000).

Several regulators have been shown to negatively regulate the NAC domain master regulators. *VND INTERACTING 2 (VNI2)* directly binds to the *VND7* protein, and represses *VND7* expression (Yamaguchi et al., 2010b). Overexpression of *VNI2* leads to failure of xylem vessel development due to inhibition of *VND7*, while mutation of *VNI2* upregulates genes involved in vessel formation (Yamaguchi et al., 2010b). *WRKY12* is a negative regulator of the NAC domain regulator *NST2* (Wang et al., 2010). In wild-type plants, *WRKY12* binds directly to the promoter of *NST2*, resulting in the suppression of SCW biosynthetic genes in pith cells (Wang et al., 2010). Mutation of *WRKY12* de-represses SCW biosynthesis in the pith cells, resulting in a SCW thickening in pith (STP) phenotype (Wang et al., 2010).

Positive regulators have also been identified in regulating NAC domain master regulators. Overexpression of *MYB26* leads to enhanced SCW deposition. Further analysis indicated that *MYB26* positively regulate SCW accumulation through *NST1* and *NST2* (Yang et al., 2007). Recently, a large scale of Yeast one Hybrid (Y1H) screen identified another upstream TF, *E2Fc*, from the SCW regulatory network. *E2Fc* can directly bind the promoters of *VND6* and *VND7*, and may function as a positive or negative regulator depends on their relative concentration (Taylor-Teeple et al., 2015).

BIOTECHNOLOGICAL UTILIZATION OF DISCOVERIES FROM MODEL SPECIES

The *Arabidopsis* stem and hypocotyl undergo secondary growth that resembles perennial trees, which makes it a model plant for studying vascular development and wood formation (Chaffey et al., 2002; Nieminen et al., 2004). Indeed, most

of the current knowledge of vascular development and xylem differentiation are derived from studies in *Arabidopsis*, or more recently, from a monocot model species *Brachypodium* (Handakumbura and Hazen, 2012). Some of the regulatory genes identified from model plants have conserved functions in biofuel feedstocks (Shen et al., 2009; Zhong et al., 2011). For example, TDIF signaling controls cambial cell divisions in aspen. Precise tissue specific overexpression of the aspen receptor kinase *PttPXY* and its peptide ligand *PttCLE41* exhibited a dramatically increase in tree growth and productivity (Etchells et al., 2015). In another study, significant enhancements in forage biomass and quality were achieved through engineering *WRKY* TFs in *Zea mays*, *Panicum virgatum*, and *Medicago sativa* (Gallego-Giraldo et al., 2016). The biotechnological utilizations of genes discovered from fundamental research in vascular development and SCW synthesis provide proof of concept for future bioengineering of biofuel feedstocks.

CONCLUDING REMARKS

We discuss the advances in the molecular regulation of vascular development and SCW deposition. Multiple regulatory pathways, such as plant hormones, HD-ZIP III TFs, VND TFs and CLE peptide signaling, have been suggested in regulating procambium development and xylem differentiation. Future studies should focus on the interactions among these pathways. For SCW biosynthesis, NAC domain TFs, MYB domain TFs and many other TFs are members of the gene regulatory network. Even though both positive and negative feedback regulation have been proposed, we know little about the molecular mechanisms of how xylem cells become committed to their identity. In order to fully understand these processes, it is essential to identify novel genes responsible for cambial cell division and xylem differentiation.

AUTHOR CONTRIBUTIONS

JY and HW prepared the figures, wrote the manuscript, read and approved the final version.

FUNDING

This work was supported by National Science Foundation (IOS-1453048), and in part, by USDA NIFA Hatch project #CONS00925 to HW.

ACKNOWLEDGMENTS

We thank Drs. Richard McAvoy and Karl Guillard for critical reading of the manuscript. We apologize to those authors whose important contribution has not been discussed in this article due to space limitations.

REFERENCES

- Agusti, J., Lichtenberger, R., Schwarz, M., Nehlin, L., and Greb, T. (2011). Characterization of transcriptome remodeling during cambium formation identifies MOL1 and RUL1 as opposing regulators of secondary growth. *PLoS Genet.* 7:e1001312. doi: 10.1371/journal.pgen.1001312
- Berleth, T., Mattsson, J., and Hardtke, C. S. (2000). Vascular continuity and auxin signals. *Trends Plant Sci.* 5, 387–393. doi: 10.1016/S1360-1385(00)01725-8
- Bishopp, A., Help, H., El-Showk, S., Weijers, D., Scheres, B., Friml, J., et al. (2011). A mutually inhibitory interaction between auxin and cytokinin specifies vascular pattern in roots. *Curr. Biol.* 21, 917–926. doi: 10.1016/j.cub.2011.04.017
- Cano-Delgado, A., Lee, J. Y., and Demura, T. (2010). Regulatory mechanisms for specification and patterning of plant vascular tissues. *Annu. Rev. Cell Dev. Biol.* 26, 605–637. doi: 10.1146/annurev-cellbio-100109-104107
- Carpita, N. C. (2012). Progress in the biological synthesis of the plant cell wall: new ideas for improving biomass for bioenergy. *Curr. Opin. Biotechnol.* 23, 330–337. doi: 10.1016/j.copbio.2011.12.003
- Carroll, A., and Somerville, C. (2009). Cellulosic biofuels. *Annu. Rev. Plant Biol.* 60, 165–182. doi: 10.1146/annurev-arplant.043008.092125
- Chaffey, N., Cholewa, E., Regan, S., and Sundberg, B. (2002). Secondary xylem development in *Arabidopsis*: a model for wood formation. *Physiol. Plant.* 114, 594–600. doi: 10.1034/j.1399-3054.2002.1140413.x
- Demura, T., and Ye, Z. H. (2010). Regulation of plant biomass production. *Curr. Opin. Plant Biol.* 13, 299–304. doi: 10.1016/j.pbi.2010.03.002
- De Rybel, B., Adibi, M., Breda, A. S., Wendrich, J. R., Smit, M. E., Novak, O., et al. (2014). Plant development. Integration of growth and patterning during vascular tissue formation in *Arabidopsis*. *Science* 345, 1255215. doi: 10.1126/science.1255215
- De Rybel, B., Moller, B., Yoshida, S., Grabowicz, I., Barbier De Reuille, P., Boeren, S., et al. (2013). A bHLH complex controls embryonic vascular tissue establishment and indeterminate growth in *Arabidopsis*. *Dev. Cell* 24, 426–437. doi: 10.1016/j.devcel.2012.12.013
- Donner, T. J., Sherr, I., and Scarpella, E. (2009). Regulation of preprocambial cell state acquisition by auxin signaling in *Arabidopsis* leaves. *Development* 136, 3235–3246. doi: 10.1242/dev.037028
- Du, Q., Avci, U., Li, S., Gallego-Giraldo, L., Pattathil, S., Qi, L., et al. (2015). Activation of miR165b represses AtHB15 expression and induces pith secondary wall development in *Arabidopsis*. *Plant J.* 83, 388–400. doi: 10.1111/tpj.12897
- Du, Q., and Wang, H. (2015). The role of HD-ZIP III transcription factors and miR165/166 in vascular development and secondary cell wall formation. *Plant Signal. Behav.* 10:e1078955. doi: 10.1080/15592324.2015.1078955
- Eames, A. J., and MacDaniels, L. H. (1947). *An Introduction to Plant Anatomy*. New York, NY: McGraw-Hill Book Company, Inc.
- Elo, A., Immanen, J., Nieminen, K., and Helariutta, Y. (2009). Stem cell function during plant vascular development. *Semin. Cell Dev. Biol.* 20, 1097–1106. doi: 10.1016/j.semcdb.2009.09.009
- Emery, J. F., Floyd, S. K., Alvarez, J., Eshed, Y., Hawker, N. P., Izhaki, A., et al. (2003). Radial patterning of *Arabidopsis* shoots by class III HD-ZIP and KANADI genes. *Curr. Biol.* 13, 1768–1774. doi: 10.1016/j.cub.2003.09.035
- Etchells, J. P., Mishra, L. S., Kumar, M., Campbell, L., and Turner, S. R. (2015). Wood formation in trees is increased by manipulating PXY-regulated cell division. *Curr. Biol.* 25, 1050–1055. doi: 10.1016/j.cub.2015.02.023
- Etchells, J. P., Provost, C. M., Mishra, L., and Turner, S. R. (2013). WOX4 and WOX14 act downstream of the PXY receptor kinase to regulate plant vascular proliferation independently of any role in vascular organisation. *Development* 140, 2224–2234. doi: 10.1242/dev.091314
- Etchells, J. P., and Turner, S. R. (2010). The PXY-CLE41 receptor ligand pair defines a multifunctional pathway that controls the rate and orientation of vascular cell division. *Development* 137, 767–774. doi: 10.1242/dev.044941
- Fisher, K., and Turner, S. (2007). PXY, a receptor-like kinase essential for maintaining polarity during plant vascular-tissue development. *Curr. Biol.* 17, 1061–1066. doi: 10.1016/j.cub.2007.05.049
- Friml, J. (2003). Auxin transport – shaping the plant. *Curr. Opin. Plant Biol.* 6, 7–12. doi: 10.1016/S1369526602000031
- Funk, V., Kositsup, B., Zhao, C., and Beers, E. P. (2002). The *Arabidopsis* xylem peptidase XCP1 is a tracheary element vacuolar protein that may be a papain ortholog. *Plant Physiol.* 128, 84–94. doi: 10.1104/pp.010514
- Gallego-Giraldo, L., Shadle, G., Shen, H., Barros-Rios, J., Fresquet Corrales, S., Wang, H., et al. (2016). Combining enhanced biomass density with reduced lignin level for improved forage quality. *Plant Biotechnol. J.* 14, 895–904. doi: 10.1111/pbi.12439
- Green, K. A., Prigge, M. J., Katzman, R. B., and Clark, S. E. (2005). CORONA, a member of the class III homeodomain leucine zipper gene family in *Arabidopsis*, regulates stem cell specification and organogenesis. *Plant Cell* 17, 691–704. doi: 10.1105/tpc.104.026179
- Hamann, T., Benkova, E., Baurle, I., Kientz, M., and Jurgens, G. (2002). The *Arabidopsis* BODENLOS gene encodes an auxin response protein inhibiting MONOPTEROS-mediated embryo patterning. *Genes Dev.* 16, 1610–1615. doi: 10.1101/gad.229402
- Handakumbura, P. P., and Hazen, S. P. (2012). Transcriptional regulation of grass secondary cell wall biosynthesis: playing catch-up with *Arabidopsis thaliana*. *Front. Plant Sci.* 3:74. doi: 10.3389/fpls.2012.00074
- Hardtke, C. S., and Berleth, T. (1998). The *Arabidopsis* gene MONOPTEROS encodes a transcription factor mediating embryo axis formation and vascular development. *EMBO J.* 17, 1405–1411. doi: 10.1093/emboj/17.5.1405
- Hirakawa, Y., Kondo, Y., and Fukuda, H. (2010). TDIF peptide signaling regulates vascular stem cell proliferation via the WOX4 homeobox gene in *Arabidopsis*. *Plant Cell* 22, 2618–2629. doi: 10.1105/tpc.110.076083
- Hirakawa, Y., Shinohara, H., Kondo, Y., Inoue, A., Nakanomyo, I., Ogawa, M., et al. (2008). Non-cell-autonomous control of vascular stem cell fate by a CLE peptide/receptor system. *Proc. Natl. Acad. Sci. U.S.A.* 105, 15208–15213. doi: 10.1073/pnas.0808444105
- Hussey, S. G., Mizrachi, E., Spokevicius, A. V., Bossinger, G., Berger, D. K., and Myburg, A. A. (2011). SND2, a NAC transcription factor gene, regulates genes involved in secondary cell wall development in *Arabidopsis* fibres and increases fibre cell area in Eucalyptus. *BMC Plant Biol.* 11:173. doi: 10.1186/1471-2229-11-173
- Ito, Y., Nakanomyo, I., Motose, H., Iwamoto, K., Sawa, S., Dohmae, N., et al. (2006). Dodeca-CLE peptides as suppressors of plant stem cell differentiation. *Science* 313, 842–845. doi: 10.1126/science.1128436
- Jin, H., Cominelli, E., Bailey, P., Parr, A., Mehrtens, F., Jones, J., et al. (2000). Transcriptional repression by AtMYB4 controls production of UV-protecting sunscreens in *Arabidopsis*. *EMBO J.* 19, 6150–6161. doi: 10.1093/emboj/19.22.6150
- Jouanet, V., Brackmann, K., and Greb, T. (2015). (Pro)cambium formation and proliferation: two sides of the same coin? *Curr. Opin. Plant Biol.* 23, 54–60. doi: 10.1016/j.pbi.2014.10.010
- Kim, J., Jung, J. H., Reyes, J. L., Kim, Y. S., Kim, S. Y., Chung, K. S., et al. (2005). microRNA-directed cleavage of ATHB15 mRNA regulates vascular development in *Arabidopsis* inflorescence stems. *Plant J.* 42, 84–94. doi: 10.1111/j.1365-313X.2005.02354.x
- Kim, W. C., Kim, J. Y., Ko, J. H., Kang, H., and Han, K. H. (2014). Identification of direct targets of transcription factor MYB46 provides insights into the transcriptional regulation of secondary wall biosynthesis. *Plant Mol. Biol.* 85, 589–599. doi: 10.1007/s11103-014-0205-x
- Ko, J. H., Kim, W. C., and Han, K. H. (2009). Ectopic expression of MYB46 identifies transcriptional regulatory genes involved in secondary wall biosynthesis in *Arabidopsis*. *Plant J.* 60, 649–665. doi: 10.1111/j.1365-313X.2009.03989.x
- Kondo, Y., Fujita, T., Sugiyama, M., and Fukuda, H. (2015). A novel system for xylem cell differentiation in *Arabidopsis thaliana*. *Mol. Plant* 8, 612–621. doi: 10.1016/j.molp.2014.10.008
- Kondo, Y., Ito, T., Nakagami, H., Hirakawa, Y., Saito, M., Tamaki, T., et al. (2014a). Plant GSK3 proteins regulate xylem cell differentiation downstream of TDIF-TDR signalling. *Nat. Commun.* 5:3504. doi: 10.1038/ncomms4504
- Kondo, Y., Tamaki, T., and Fukuda, H. (2014b). Regulation of xylem cell fate. *Front. Plant Sci.* 5:315. doi: 10.3389/fpls.2014.00315
- Kubo, M., Udagawa, M., Nishikubo, N., Horiguchi, G., Yamaguchi, M., Ito, J., et al. (2005). Transcription switches for protoxylem and metaxylem vessel formation. *Genes Dev.* 19, 1855–1860. doi: 10.1101/gad.1331305
- Li, E., Bhargava, A., Qiang, W., Friedmann, M. C., Forneris, N., Savidge, R. A., et al. (2012). The Class II KNOX gene KNAT7 negatively regulates secondary wall formation in *Arabidopsis* and is functionally conserved in *Populus*. *New Phytol.* 194, 102–115. doi: 10.1111/j.1469-8137.2011.04016.x

- Li, J., and Nam, K. H. (2002). Regulation of brassinosteroid signaling by a GSK3/SHAGGY-like kinase. *Science* 295, 1299–1301.
- Mazur, E., Kurczynska, E. U., and Friml, J. (2014). Cellular events during interfascicular cambium ontogenesis in inflorescence stems of *Arabidopsis*. *Protoplasma* 251, 1125–1139. doi: 10.1007/s00709-014-0620-5
- McConnell, J. R., Emery, J., Eshed, Y., Bao, N., Bowman, J., and Barton, M. K. (2001). Role of PHABULOSA and PHAVOLUTA in determining radial patterning in shoots. *Nature* 411, 709–713. doi: 10.1038/35079635
- Mitsuda, N., Iwase, A., Yamamoto, H., Yoshida, M., Seki, M., Shinozaki, K., et al. (2007). NAC transcription factors, NST1 and NST3, are key regulators of the formation of secondary walls in woody tissues of *Arabidopsis*. *Plant Cell* 19, 270–280. doi: 10.1105/tpc.106.047043
- Mitsuda, N., Seki, M., Shinozaki, K., and Ohme-Takagi, M. (2005). The NAC transcription factors NST1 and NST2 of *Arabidopsis* regulate secondary wall thickenings and are required for anther dehiscence. *Plant Cell* 17, 2993–3006. doi: 10.1105/tpc.105.036004
- Miyashima, S., Sebastian, J., Lee, J. Y., and Helariutta, Y. (2013). Stem cell function during plant vascular development. *EMBO J.* 32, 178–193. doi: 10.1038/emboj.2012.301
- Nieminen, K. M., Kauppinen, L., and Helariutta, Y. (2004). A weed for wood? *Arabidopsis* as a genetic model for xylem development. *Plant Physiol.* 135, 653–659. doi: 10.1104/pp.104.040212
- Ohashi-Ito, K., and Fukuda, H. (2014). Xylem. *Curr. Biol.* 24:R1149. doi: 10.1016/j.cub.2014.10.010
- Ohashi-Ito, K., Oda, Y., and Fukuda, H. (2010). *Arabidopsis* VASCULAR-RELATED NAC-DOMAIN6 directly regulates the genes that govern programmed cell death and secondary wall formation during xylem differentiation. *Plant Cell* 22, 3461–3473. doi: 10.1105/tpc.110.075036
- Ohashi-Ito, K., Oguchi, M., Kojima, M., Sakakibara, H., and Fukuda, H. (2013). Auxin-associated initiation of vascular cell differentiation by LONESOME HIGHWAY. *Development* 140, 765–769. doi: 10.1242/dev.087924
- Ohashi-Ito, K., Saegusa, M., Iwamoto, K., Oda, Y., Katayama, H., Kojima, M., et al. (2014). A bHLH complex activates vascular cell division via cytokinin action in root apical meristem. *Curr. Biol.* 24, 2053–2058. doi: 10.1016/j.cub.2014.07.050
- Pauly, M., and Keegstra, K. (2010). Plant cell wall polymers as precursors for biofuels. *Curr. Opin. Plant Biol.* 13, 305–312. doi: 10.1016/j.pbi.2009.12.009
- Prigge, M. J., Otsuga, D., Alonso, J. M., Ecker, J. R., Drews, G. N., and Clark, S. E. (2005). Class III homeodomain-leucine zipper gene family members have overlapping, antagonistic, and distinct roles in *Arabidopsis* development. *Plant Cell* 17, 61–76. doi: 10.1105/tpc.104.026161
- Ruzicka, K., Ursache, R., Hejatkó, J., and Helariutta, Y. (2015). Xylem development – from the cradle to the grave. *New Phytol.* 207, 519–535. doi: 10.1111/nph.13383
- Schlereth, A., Moller, B., Liu, W., Kientz, M., Flipse, J., Rademacher, E. H., et al. (2010). MONOPTEROS controls embryonic root initiation by regulating a mobile transcription factor. *Nature* 464, 913–916. doi: 10.1038/nature08836
- Schuetz, M., Smith, R., and Ellis, B. (2013). Xylem tissue specification, patterning, and differentiation mechanisms. *J. Exp. Bot.* 64, 11–31. doi: 10.1093/jxb/ers287
- Shen, H., Yin, Y. B., Chen, F., Xu, Y., and Dixon, R. A. (2009). A bioinformatic analysis of NAC genes for plant cell wall development in relation to lignocellulosic bioenergy production. *Bioenergy Res.* 2, 217–232. doi: 10.1007/s12155-009-9047-9
- Somerville, C. (2007). Biofuels. *Curr. Biol.* 17, R115–R119. doi: 10.1016/j.cub.2007.01.010
- Taylor-Teeple, M., Lin, L., De Lucas, M., Turco, G., Toal, T. W., Gaudinier, A., et al. (2015). An *Arabidopsis* gene regulatory network for secondary cell wall synthesis. *Nature* 517, 571–575. doi: 10.1038/nature14099
- Ursache, R., Miyashima, S., Chen, Q., Vaten, A., Nakajima, K., Carlsbecker, A., et al. (2014). Tryptophan-dependent auxin biosynthesis is required for HD-ZIP III-mediated xylem patterning. *Development* 141, 1250–1259. doi: 10.1242/dev.103473
- Wang, H., Avci, U., Nakashima, J., Hahn, M. G., Chen, F., and Dixon, R. A. (2010). Mutation of WRKY transcription factors initiates pith secondary wall formation and increases stem biomass in dicotyledonous plants. *Proc. Natl. Acad. Sci. U.S.A.* 107, 22338–22343. doi: 10.1073/pnas.1016436107
- Wang, H., Zhao, Q., Chen, F., Wang, M., and Dixon, R. A. (2011). NAC domain function and transcriptional control of a secondary cell wall master switch. *Plant J.* 68, 1104–1114. doi: 10.1111/j.1365-3113.2011.04764.x
- Wang, H. Z., and Dixon, R. A. (2012). On-off switches for secondary cell wall biosynthesis. *Mol. Plant* 5, 297–303. doi: 10.1093/mp/ssr098
- Wang, J., Kucukoglu, M., Zhang, L., Chen, P., Decker, D., Nilsson, O., et al. (2013). The *Arabidopsis* LRR-RLK, PXC1, is a regulator of secondary wall formation correlated with the TDIF-PXY/TDR-WOX4 signaling pathway. *BMC Plant Biol.* 13:94. doi: 10.1186/1471-2229-13-94
- Wenzel, C. L., Schuetz, M., Yu, Q., and Mattsson, J. (2007). Dynamics of MONOPTEROS and PIN-FORMED1 expression during leaf vein pattern formation in *Arabidopsis thaliana*. *Plant J.* 49, 387–398. doi: 10.1111/j.1365-3113.2006.02977.x
- Williams, L., Grigg, S. P., Xie, M., Christensen, S., and Fletcher, J. C. (2005). Regulation of *Arabidopsis* shoot apical meristem and lateral organ formation by microRNA miR166g and its AtHD-ZIP target genes. *Development* 132, 3657–3668. doi: 10.1242/dev.01942
- Yamaguchi, M., Goue, N., Igarashi, H., Ohtani, M., Nakano, Y., Mortimer, J. C., et al. (2010a). VASCULAR-RELATED NAC-DOMAIN6 and VASCULAR-RELATED NAC-DOMAIN7 effectively induce transdifferentiation into xylem vessel elements under control of an induction system. *Plant Physiol.* 153, 906–914. doi: 10.1104/pp.110.154013
- Yamaguchi, M., Mitsuda, N., Ohtani, M., Ohme-Takagi, M., Kato, K., and Demura, T. (2011). VASCULAR-RELATED NAC-DOMAIN7 directly regulates the expression of a broad range of genes for xylem vessel formation. *Plant J.* 66, 579–590. doi: 10.1111/j.1365-3113.2011.04514.x
- Yamaguchi, M., Ohtani, M., Mitsuda, N., Kubo, M., Ohme-Takagi, M., Fukuda, H., et al. (2010b). VND-INTERACTING2, a NAC domain transcription factor, negatively regulates xylem vessel formation in *Arabidopsis*. *Plant Cell* 22, 1249–1263. doi: 10.1105/tpc.108.064048
- Yang, C., Xu, Z., Song, J., Conner, K., Vizcay Barrena, G., and Wilson, Z. A. (2007). *Arabidopsis* MYB26/MALE STERILE35 regulates secondary thickening in the endothecium and is essential for anther dehiscence. *Plant Cell* 19, 534–548. doi: 10.1105/tpc.106.046391
- Yin, Y., Wang, Z. Y., Mora-Garcia, S., Li, J., Yoshida, S., Asami, T., et al. (2002). BES1 accumulates in the nucleus in response to brassinosteroids to regulate gene expression and promote stem elongation. *Cell* 109, 181–191. doi: 10.1016/S0092-8674(02)00721-3
- Zhang, J., Nieminen, K., Serra, J. A., and Helariutta, Y. (2014). The formation of wood and its control. *Curr. Opin. Plant Biol.* 17, 56–63. doi: 10.1016/j.pbi.2013.11.003
- Zhao, C., Avci, U., Grant, E. H., Haigler, C. H., and Beers, E. P. (2008). XND1, a member of the NAC domain family in *Arabidopsis thaliana*, negatively regulates lignocellulose synthesis and programmed cell death in xylem. *Plant J.* 53, 425–436. doi: 10.1111/j.1365-3113.2007.03350.x
- Zhong, R., Demura, T., and Ye, Z. H. (2006). SND1, a NAC domain transcription factor, is a key regulator of secondary wall synthesis in fibers of *Arabidopsis*. *Plant Cell* 18, 3158–3170. doi: 10.1105/tpc.106.047399
- Zhong, R., Lee, C., McCarthy, R. L., Reeves, C. K., Jones, E. G., and Ye, Z. H. (2011). Transcriptional activation of secondary wall biosynthesis by rice and maize NAC and MYB transcription factors. *Plant Cell Physiol.* 52, 1856–1871. doi: 10.1093/pcp/pcr123
- Zhong, R., Lee, C., Zhou, J., McCarthy, R. L., and Ye, Z. H. (2008). A battery of transcription factors involved in the regulation of secondary cell wall biosynthesis in *Arabidopsis*. *Plant Cell* 20, 2763–2782. doi: 10.1105/tpc.108.061325
- Zhong, R., Richardson, E. A., and Ye, Z. H. (2007a). The MYB46 transcription factor is a direct target of SND1 and regulates secondary wall biosynthesis in *Arabidopsis*. *Plant Cell* 19, 2776–2792. doi: 10.1105/tpc.107.053678
- Zhong, R., Richardson, E. A., and Ye, Z. H. (2007b). Two NAC domain transcription factors, SND1 and NST1, function redundantly in regulation of secondary wall synthesis in fibers of *Arabidopsis*. *Planta* 225, 1603–1611. doi: 10.1007/s00425-007-0498-y
- Zhong, R., and Ye, Z. H. (2012). MYB46 and MYB83 bind to the SMRE sites and directly activate a suite of transcription factors and secondary wall biosynthetic genes. *Plant Cell Physiol.* 53, 368–380. doi: 10.1093/pcp/pcr185

- Zhong, R., and Ye, Z. H. (2014). Complexity of the transcriptional network controlling secondary wall biosynthesis. *Plant Sci.* 229, 193–207. doi: 10.1016/j.plantsci.2014.09.009
- Zhong, R., and Ye, Z. H. (2015). Secondary cell walls: biosynthesis, patterned deposition and transcriptional regulation. *Plant Cell Physiol.* 56, 195–214. doi: 10.1093/pcp/pcu140
- Zhou, J., Lee, C., Zhong, R., and Ye, Z. H. (2009). MYB58 and MYB63 are transcriptional activators of the lignin biosynthetic pathway during secondary cell wall formation in *Arabidopsis*. *Plant Cell* 21, 248–266. doi: 10.1105/tpc.108.063321
- Zhou, J., Zhong, R., and Ye, Z. H. (2014). *Arabidopsis* NAC domain proteins, VND1 to VND5, are transcriptional regulators of secondary wall biosynthesis in vessels. *PLoS ONE* 9:e105726. doi: 10.1371/journal.pone.0105726
- Zhou, Y., Liu, X., Engstrom, E. M., Nimchuk, Z. L., Pruneda-Paz, J. L., Tarr, P. T., et al. (2015). Control of plant stem cell function by conserved interacting transcriptional regulators. *Nature* 517, 377–380. doi: 10.1038/nature13853

Conflict of Interest Statement: The authors declare that the research was conducted in the absence of any commercial or financial relationships that could be construed as a potential conflict of interest.

Copyright © 2016 Yang and Wang. This is an open-access article distributed under the terms of the Creative Commons Attribution License (CC BY). The use, distribution or reproduction in other forums is permitted, provided the original author(s) or licensor are credited and that the original publication in this journal is cited, in accordance with accepted academic practice. No use, distribution or reproduction is permitted which does not comply with these terms.