

MRI for the preoperative evaluation of femoroacetabular impingement

Angela E. Li¹  · Shari T. Jawetz¹ · Harry G. Greditzer IV¹ · Alissa J. Burge¹ · Danyal H. Nawabi² · Hollis G. Potter¹

Received: 4 October 2015 / Revised: 24 November 2015 / Accepted: 10 December 2015 / Published online: 29 December 2015
© The Author(s) 2015. This article is published with open access at Springerlink.com

Abstract Femoroacetabular impingement (FAI) refers to a condition characterized by impingement of the femoral head–neck junction against the acetabular rim, often due to underlying osseous and/or soft tissue morphological abnormalities. It is a common cause of hip pain and limited range of motion in young and middle-aged adults. Hip preservation surgery aims to correct the morphological variants seen in FAI, thereby relieving pain and improving function, and potentially preventing early osteoarthritis. The purpose of this article is to review the mechanisms of chondral and labral injury in FAI to facilitate an understanding of patterns of chondrolabral injury seen on MRI. Preoperative MRI evaluation of FAI should include assessment of osseous morphologic abnormalities, labral tears, cartilage status, and other associated compensatory injuries of the pelvis. As advanced chondral wear is the major relative contraindication for hip preservation surgery, MRI is useful in the selection of patients likely to benefit from surgery.

Teaching points

- The most common anatomical osseous abnormalities predisposing to FAI include cam and pincer lesions.
- Morphological abnormalities, labral lesions, and cartilage status should be assessed.
- In cam impingement, chondral wear most commonly occurs anterosuperiorly.
- Pre-existing advanced osteoarthritis is the strongest predictor of poor outcomes after FAI surgery.
- Injury to muscles and tendons or other pelvic structures can coexist with FAI.

Keywords Magnetic resonance imaging · Femoroacetabular impingement · Cartilage · Arthroscopy · Preoperative

Introduction

Femoroacetabular impingement (FAI) refers to pathological contact between an abnormally shaped femoral head and acetabulum, which can result in early labral and chondral damage. It is an important cause of hip pain and restricted range of motion in young adults. Symptomatic FAI ultimately requiring surgery is more prevalent in high-level athletes than in individuals who participate in recreational sports activity [1]. FAI is the most common cause of labral tears; osseous morphological changes associated with FAI have been found in up to 79 % of patients with symptomatic tears [2]. FAI predisposes patients to premature chondral wear and osteoarthritis [3–5].

Initial treatment of FAI is typically conservative in nature, and can include activity modification, non-steroidal anti-inflammatory medications, and physical therapy. If the pain causing limitation of activity persists, surgery can be considered. Hip preservation surgery aims to treat

✉ Angela E. Li
angela.li.rad@gmail.com

Shari T. Jawetz
jawetzsh@hss.edu

Harry G. Greditzer, IV
greditzerh@hss.edu

Alissa J. Burge
burgea@hss.edu

Danyal H. Nawabi
nawabid@hss.edu

Hollis G. Potter
potterh@hss.edu

¹ Department of Radiology and Imaging, Hospital for Special Surgery, 535 E 70th Street, New York, NY 10021, USA

² Sports Medicine and Shoulder Service, Hospital for Special Surgery, 535 E 70th Street, New York, NY 10021, USA

the structural lesions causing FAI [6], thereby relieving pain and improving function. Whilst it has been proven to improve symptoms, and some studies have shown promising results in the prevention of osteoarthritis, there is insufficient data to conclude whether it prevents the onset of early osteoarthritis [7–9]. Hip preservation surgery can be arthroscopic or open, and may include acetabular rim resection, osteochondroplasty, and labral or cartilage debridement or repair techniques. Pre-existing advanced osteoarthritis is the strongest predictor of poor outcomes following FAI surgery [10–12], and thus the major relative contraindication to hip preservation surgery is severe chondral wear.

The most common anatomical osseous abnormalities predisposing to FAI include cam or pincer lesions; however, mixed cam and pincer impingement is more common than either one in isolation [7, 8]. Cam and pincer structural lesions are common, and are found in up to 25 % of asymptomatic individuals [3, 13]. As such, a diagnosis of FAI should be made only in the correct clinical context. The most common presenting symptom is activity-related groin pain which is exacerbated by hip flexion and internal rotation. Patients often have a positive impingement test, where internal rotation and adduction with the hip in 90° of flexion reproduces the pain [5, 14].

Multiple imaging modalities, including radiographs and computed tomography (CT), are used in the preoperative evaluation of FAI [15]. Radiographs often serve as an initial screening tool to assess for pincer or cam lesions, hip dysplasia, or advanced osteoarthritis [16]. In addition to findings on radiographs, CT with 3D

reconstructions allows detailed assessment of osseous morphology in preoperative planning [17].

The superior soft tissue contrast of MRI [18] allows for direct evaluation of the labrum and cartilage, and can guide the selection of patients who will benefit from this surgery. MRI can be performed without or with injection of intra-articular contrast, and does not employ ionizing radiation, which is of critical importance in this young patient population. The purpose of this article is to outline the pathophysiology of FAI and to provide an approach for preoperative MRI evaluation.

Etiology and pathophysiology

Various static and dynamic factors can contribute to abnormal biomechanics which predispose to femoroacetabular impingement [19]. Static factors include incongruence between the femoral head and acetabulum, leading to asymmetric load and mechanical stress on the chondral surfaces of the hip joint. Dynamic factors include abnormal engagement of the femoral head and acetabulum at the extremes of motion, typically in full flexion, also resulting in asymmetric load and stress on chondral surfaces [20].

Cam morphology refers to asphericity of the femoral head, with loss of offset of the femoral head–neck junction, likened to a “pistol grip” deformity as seen on anteroposterior radiograph images. The physis extends lateral to the circular region of the femoral head. One hypothesis for the development of the aspherical femoral head is abnormal growth and lateral extension of the femoral head physis, with eccentric closure

Fig. 1 Diagram outlining the mechanisms of chondral and labral injury in cam impingement. The main focus of injury is the chondrolabral junction. There is relative sparing of the labrum until later in the disease process

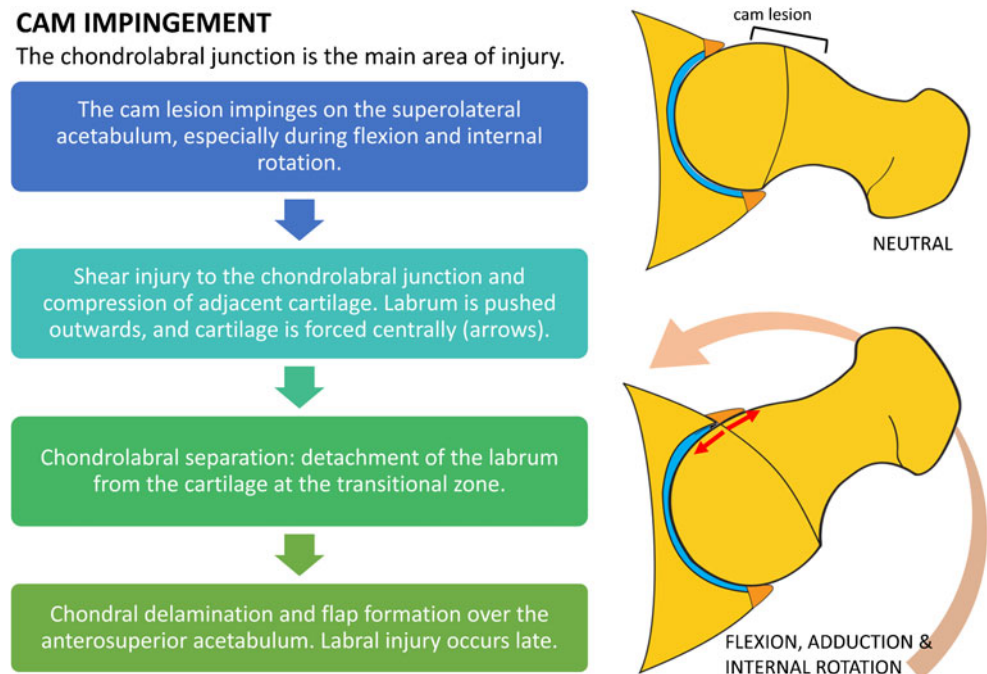


Fig. 2 Diagram outlining the mechanisms of chondral and labral injury in pincer impingement. The labrum is the main focus of damage. Chondral injury is initially limited to a relatively small strip of cartilage at the transition zone

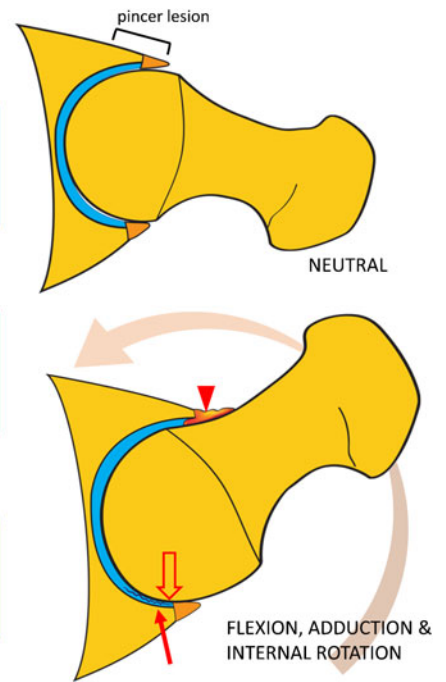
PINCER IMPINGEMENT

The labrum is the main area of injury.

The femoral neck abuts the abnormal acetabulum anterosuperiorly at the limit of movement. This causes compression of the labrum and adjacent thin strip of cartilage.

Labral intrasubstance injury and extensive tearing (arrowhead). Attritional change of the labrum and intralabral ossification ensues over time.

Levering of the femoral head with posterior subluxation creates a contrecoup lesion with abnormal shear forces posteroinferiorly (open arrow). Chondral injury posteroinferiorly (arrow)



[21]. It has been posited that intense physical activity in childhood can result in premature physseal arrest and the development of cam lesions [22].

Cam impingement causes shear forces at the chondrolabral junction. With hip flexion and internal rotation, the labrum is pushed outward and the cartilage is compressed and pushed centrally into the joint, initially resulting in separation of the labrum and cartilage at the transitional zone (defined as the region between the labrum and cartilage), termed chondrolabral separation or labral detachment [3, 5]. This is followed by adjacent chondral delamination near the transitional zone [3, 10] (Fig. 1). The main focus of injury, therefore, is the chondrolabral junction; intrasubstance labral tears tend to occur later in the disease process. Due to the predominantly peripheral (outer) location of labral tears in cam impingement and blood supply from the capsule, healing

rates are more favourable than for labral tears in pincer impingement [4].

Pincer-type lesions are related to overcoverage of the femoral head. These are most commonly due to focal superior acetabular retroversion, but global acetabular overcoverage may also cause pincer-type impingement. Repetitive contact between the prominent acetabular rim and femoral neck during flexion and internal rotation results in labral compression. The labrum is the first structure to sustain injury, with labral degeneration and intrasubstance tears most commonly found anterosuperiorly [3, 5] (Fig. 2). Only a thin strip of cartilage adjacent to the labrum is compressed, resulting in limited chondral wear, compared to the more extensive chondral delamination or deep chondral wear seen with cam impingement [5]. Levering of the femoral head results in contrecoup injury during hip flexion and internal rotation, with chondral wear over the posteroinferior acetabulum [3].

Table 1 Etiology of cam and pincer lesions

	Cam lesions	Pincer lesions
Primary	Idiopathic	Idiopathic
Secondary	<ul style="list-style-type: none"> • Developmental <ul style="list-style-type: none"> • Coxa vara • Perthes disease • SCFE • Traumatic <ul style="list-style-type: none"> • Malunited femoral neck fracture • Iatrogenic <ul style="list-style-type: none"> • Femoral head osteotomy 	<ul style="list-style-type: none"> • Developmental <ul style="list-style-type: none"> • Coxa profunda • Protrusio acetabuli • Traumatic <ul style="list-style-type: none"> • Post-traumatic deformity of acetabulum • Iatrogenic <ul style="list-style-type: none"> • Overcorrection of hip dysplasia

SCFE slipped capital femoral epiphysis

Cam and pincer lesions are usually idiopathic in etiology, although they can be secondary to developmental abnormalities. Perthes disease and slipped capital femoral epiphysis can lead to the development of cam lesions (Table 1). Prior trauma or hip surgery can result in either cam or pincer morphology. Occurrence of pincer FAI has been reported after iatrogenic overcorrection of acetabular dysplasia with periacetabular osteotomy [23].

There are gender-specific differences in FAI, with large cam lesions more prevalent in young males and pincer lesions more common in middle-aged females [5, 24, 25]. The association between hip dysplasia and FAI is well known, with 75 % of patients with hip dysplasia having an aspherical femoral head or insufficient offset of the femoral head–neck junction, predisposing to symptomatic impingement [26].

MR imaging technique

Variable accuracy has been reported for non-contrast MRI for the detection of labral tears, depending on the magnetic field strength, slice thickness, and field of view [27]. Three studies using high-resolution MRI at 1.5T and a small field of view demonstrated sensitivity of 77–97 % for the detection of labral tears compared with a surgical reference standard [28–30].

Direct MR arthrography involves intra-articular injection of diluted gadolinium contrast into the hip joint, and has the benefit of joint distention and improved contrast-to-noise ratio. A recent review of 19 studies evaluating MR arthrography demonstrated sensitivity of 69–100 % for the detection of labral tears with a surgical reference standard, with 12 of these studies showing sensitivity greater than 90 % [31].

A meta-analysis found that MR arthrography had higher sensitivity but lower specificity than conventional MRI for the detection of labral tears [27]. For evaluation of chondral lesions, MRI has shown higher diagnostic accuracy, with another meta-analysis demonstrating pooled sensitivity and specificity of 59 % and 94 % for MRI, compared to 62 % and 86 % for MR arthrography [32]. MR arthrography has the disadvantage of being more time consuming and invasive, with some patients experiencing post-procedural pain [33, 34]. The choice between conventional MRI and MRA will vary by institution and will depend on the ability to optimize the MRI scanning protocol with each technique.

At the authors' institution, MRI of the hip is performed using a cardiac or small body coil on a 1.5T or 3.0T scanner. Dedicated non-contrast high-resolution fast spin-echo sequences of the affected hip are performed in the sagittal, coronal, and axial oblique planes. The axial oblique plane (Swiss axial) is obtained along the long axis of the femoral neck (Fig. 3). Larger field-of-view coronal inversion recovery and axial fast spin-echo sequences of the pelvis are performed to assess for associated injuries and other causes of hip pain, including tendinopathy and the athletic pubalgia spectrum of injuries. An axial sequence of the femoral condyles is also performed to correct for distal femoral rotation in the calculation of femoral anteversion. A suggested standard MRI pulse sequence protocol is outlined in Table 2.

Radial imaging can also be performed with image slices obtained perpendicular to the hip joint. This allows evaluation of osseous abnormalities, labral and chondral lesions, and measurement of alpha angles in different

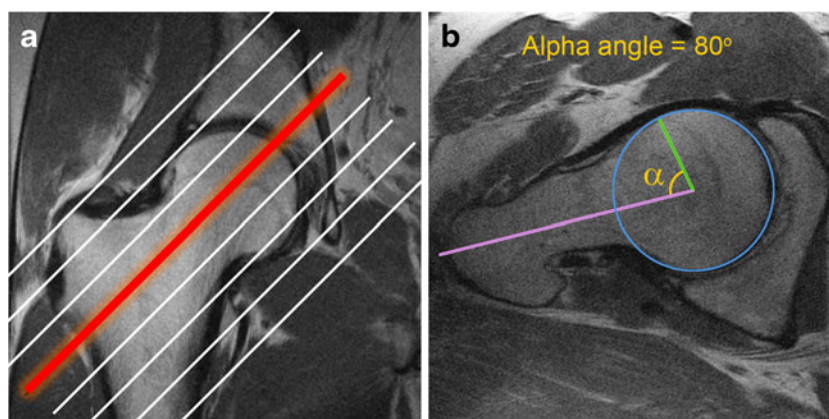


Fig. 3 Obtaining Swiss axial images and calculating the alpha angle. **a** The Swiss axial (axial oblique) images are obtained along the long axis of the femoral neck. **b** To calculate the alpha angle, the axial oblique image through the midportion of the femoral neck (red line) is chosen. A circle is drawn over the femoral head cortex (blue circle). A line is drawn through the long axis of the femoral neck at its narrowest point (purple line),

through the center of the femoral head. Another line is drawn from the center of the femoral neck to the point where the femoral head–neck junction meets the circle (green line). The alpha angle is the angle between the two lines. An alpha angle of $>55^\circ$ is considered a risk factor for FAI

Table 2 Suggested MRI pulse sequence protocol at 3T and (1.5T)

3T (1.5T)	Coronal STIR wide FOV	Axial PD wide FOV	Sagittal PD	Axial oblique PD	Coronal PD
TR/TE (ms)	4000/19 (4000/17)	4800/40 (4000/30)	4000/30 (3500/26)	4000/40 (4000/26)	4000/32 (4000/26)
Flip angle	180 (180)	180 (180)	180 (180)	180 (180)	180 (180)
ETL	12 (7)	12 (7)	12 (8)	12 (9)	12 (7)
RBW (kHz)	50 (32)	50 (32)	50 (32)	50 (32)	50 (32)
NEX	2 (2)	1 (2)	2 (3)	2 (3)	2 (3)
Matrix	288 × 288 (256 × 192)	512 × 256 (512 × 256)	512 × 384 (512 × 384)	512 × 320 (512 × 256)	512 × 384 (512 × 384)
FOV (cm)	38 (34)	36 (36)	19 (20)	19 (20)	19 (20)
Slice thickness (mm)/gap	5.5/0 (5.0/0)	5.0/0 (5.0/0)	2.5/0 (2.5–2.8/0)	3.0/0 (3.0/0)	3.0 (3.0/0)

STIR short tau inversion recovery, *PD* proton density, *TR* repetition time, *TE* echo time, *ETL* echo train length, *RBW* receiver bandwidth, *NEX* number of excitations, *FOV* field of view

clock-face locations [35]. By convention, 12 o'clock refers to the superior hip joint, and 3 o'clock refers to the anterior aspect of the hip joint bilaterally.

Preoperative evaluation

Preoperative evaluation of FAI on MRI should include assessment of osseous morphological abnormalities, labral lesions, cartilage status, and associated soft tissue injuries. A checklist for preoperative evaluation of FAI is given in Table 3.

Table 3 MRI reporting checklist for preoperative FAI evaluation

Preoperative FAI reporting checklist	
Osseous morphological abnormalities	Cam lesion Pincer lesion - Superior acetabular retroversion - True acetabular retroversion - Global acetabular overcoverage: coxa profunda or protrusio Mixed cam/pincer deformity
Labral lesions	Chondrolabral separation Labral tear or degeneration Intralabral ossification
Cartilage	Chondral delamination Chondral loss Other signs of osteoarthritis: subchondral cysts, sclerosis, osteophytes
Measurements	Alpha angle Femoral anteversion
Associated injuries	Pubic symphysis stress reaction Adductor aponeurosis injury Tendinopathy and tendon tears: hip flexors, abductors, and hamstrings.

Osseous morphology

The identification of osseous morphology predisposing to FAI is important, as surgical treatment of labral tears without addressing the bony impingement is a common cause for symptom recurrence [20]. Cam morphology appears on MRI as insufficient offset between the femoral head and neck, with a focal osseous bump or protuberance at the femoral head–neck junction, which can be assessed on axial or coronal images (Fig. 4). This is often associated with fibrocystic change at the femoral neck anterosuperiorly from chronic impingement, which can be seen on MRI as small cysts varying in diameter [36].

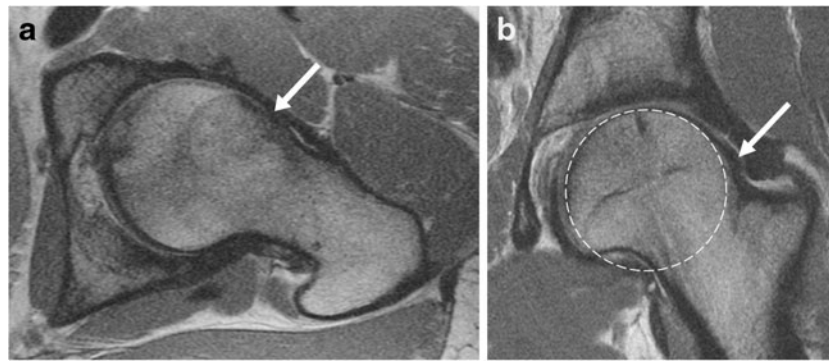


Fig. 4 Oblique axial (a) and coronal (b) proton density (PD)-weighted MRI images in a 30-year-old man with a cam deformity. There is an osseous protuberance (arrows) at the femoral head–neck junction

anterolaterally, with loss of offset of the femoral head–neck junction. The physeal scar extends lateral to the circular region of the femoral head (dashed circle) on the coronal image

Pincer impingement can occur due to focal or global acetabular overcoverage. Focal acetabular overcoverage or cranial acetabular retroversion is due to an anterosuperior rim lesion, resulting in anterior acetabular overcoverage only at the superior acetabulum. The “crossover” sign may be seen on radiographs, where the anterior acetabular rim projects lateral to the posterior acetabular rim. However, a false crossover sign can appear, depending on the degree of pelvic tilt and inclination, and the tilting of the x-ray tube. Despite well-positioned radiographs, the “crossover” sign can overestimate the incidence of cranial acetabular retroversion [37]. On MRI, the degree of acetabular retroversion is determined by drawing a line between the lateral margins of the acetabulum on the cranial-most axial slices (Fig. 5).

Global acetabular overcoverage can occur due to coxa profunda, protrusio, or true acetabular retroversion, which can result in pincer impingement. True acetabular retroversion refers to posterior wall undercoverage both superiorly and inferiorly, with relative anterior acetabular overcoverage. Coxa profunda is characterized by a deep acetabulum with circumferential medial joint space loss. On radiographs, the wall of the acetabulum projects

medial to the ilioischial line [38]. Acetabular depth can be calculated by measuring the distance between a line drawn through the center of the femoral head and a line joining the anterior and posterior acetabular rims [39]. Protrusio acetabuli is diagnosed when the femoral head projects medial to the ilioischial line on an AP pelvis radiograph [40].

Labral tears and chondrolabral separation

The normal acetabular labrum appears as a low-signal triangle with smooth margins [41]. A common pitfall in MRI evaluation of the labrum is the presence of sublabral recesses. These are normal variants that typically do not extend the full thickness of the labrum, and are more often seen anteroinferiorly or posteroinferiorly [42, 43]. A hyperintense cleft in the anterosuperior labrum should be viewed with high suspicion for a labral tear [44]. On MRI, chondrolabral separation appears as a fluid signal intensity cleft undermining the labrum at the chondrolabral junction, with or without labral detachment (Figs. 6, 7, and 8) [15, 41].

The labral degeneration of pincer impingement appears as increased signal intensity in the labrum on fluid-

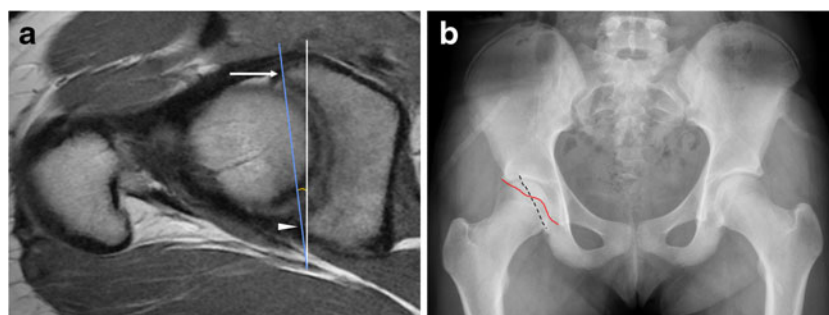
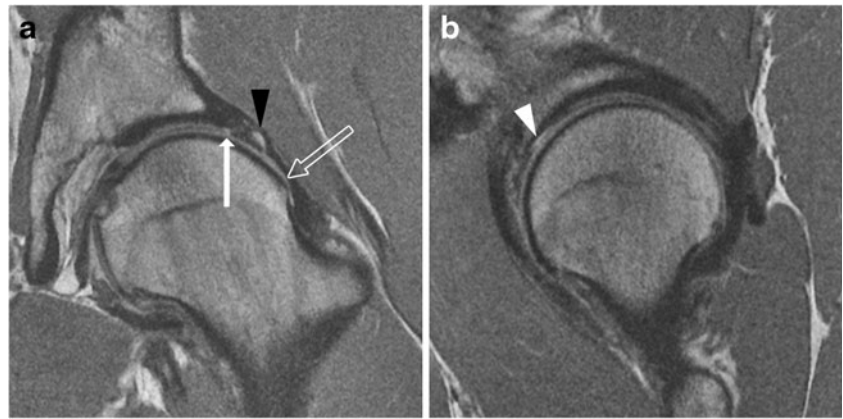


Fig. 5 An 18-year-old girl with pincer deformity. (a) On an axial oblique PD-weighted MRI image superiorly, the anterior rim of the acetabulum (arrow) is located lateral to the posterior rim (arrowhead), indicative of superior acetabular retroversion (blue line). Superior acetabular

retroversion of 8° is shown in this example. (b) Corresponding radiograph demonstrates the “crossover” sign where the anterior acetabular wall projects (red line) lateral to the posterior acetabular wall (black dashed line) superiorly

Fig. 6 A 26-year-old man with FAI. **a** Coronal PD-weighted image shows a cam lesion at the femoral head–neck junction (*open arrow*). There is chondrolabral separation, with a cleft between the labrum and cartilage (*arrow*). A paralabral cyst is also seen (*black arrowhead*). **b** Sagittal PD-weighted image shows chondral delamination near the transition zone anterosuperiorly (*white arrowhead*)



sensitive MRI sequences, and it may be associated with hypertrophy of the labrum [41]. Labral tears are manifested as linear fluid signal intensity extending from the labral surface into the substance of the labrum (Fig. 8). As the disease progresses, the labrum gradually becomes thinner and increasingly attenuated until it is finally no longer visible [4]. Associated paralabral cysts are frequently demonstrated on MRI [45].

Chronic microtrauma and degeneration of the labrum results in osseous metaplasia and intralabral ossification, which is more commonly seen in pincer impingement [3]. Intralabral ossification can result in acetabular overcoverage and cause further impingement [4]. On MRI, intralabral ossification appears as small foci of signal intensity similar to bone marrow (Fig. 8) [46].

Chondral wear and other signs of osteoarthritis

In cam impingement, chondral wear or delamination most commonly occurs anterosuperiorly, maximally at 1 o'clock [3, 39] (Fig. 6), appearing on the acetabular side initially, with involvement of the femoral side in

more advanced cases. Pincer lesions result in greater circumferential chondral wear, which is most marked superiorly at 11 to 1 o'clock [3], or posteroinferiorly due to contrecoup forces [39]. In advanced osteoarthritis, MRI may demonstrate subchondral sclerosis, subchondral cyst formation, marginal osteophytes, or bone-on-bone contact (Fig. 9).

Advanced cartilage imaging techniques

Assessment of cartilage on standard MRI pulse sequences is challenging due to the relatively thin layer of cartilage in the hip. Additionally, the curved surfaces of the femoral head and acetabulum result in partial volume effects, making evaluation difficult. Quantitative MRI of cartilage can detect early changes associated with chondral degeneration, and can thus provide additional information for consideration of arthroscopy or for longitudinal follow-up of patients following FAI surgery. Various quantitative MRI techniques are available, including delayed gadolinium-enhanced MRI of cartilage (dGEMRIC), and T1rho (T1 ρ), and T2 mapping.

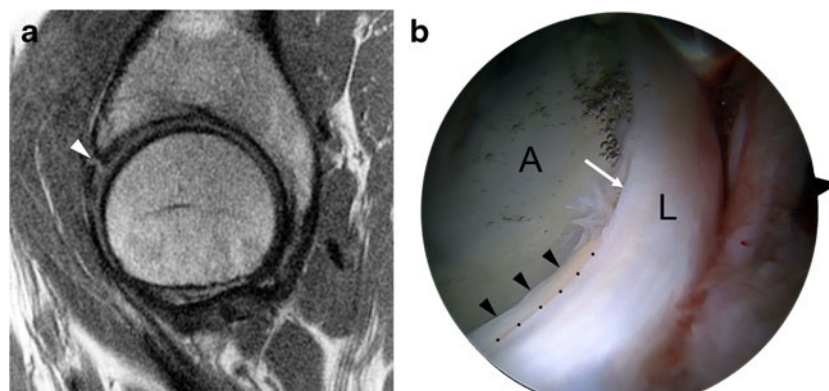


Fig. 7 A 46-year-old woman with combined cam and pincer impingement. **a** Sagittal PD-weighted MRI demonstrates separation at the chondrolabral junction (*black arrow*). **b** Arthroscopic photo in the same patient demonstrates acetabular cartilage (A), labrum (L), and the

transition zone between (*dots*). There is chondrolabral separation between 1 and 3 o'clock (*white arrow*) and chondral delamination (*black arrowheads*) adjacent to the transition zone

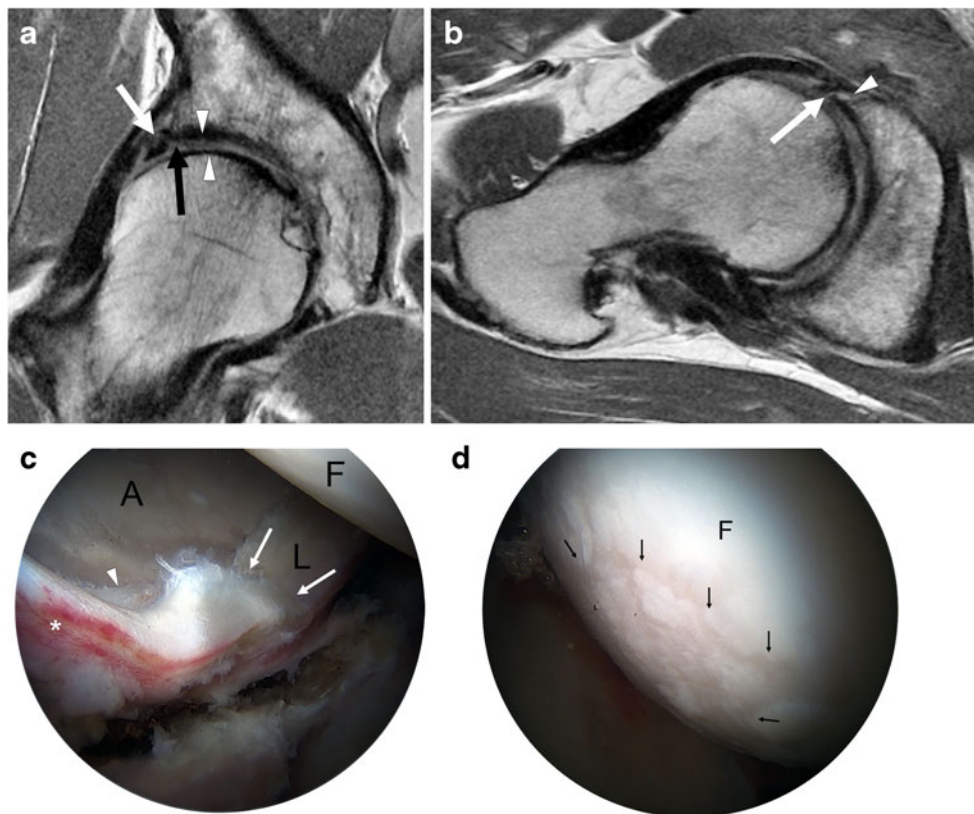


Fig. 8 A 48-year-old man with combined cam and pincer impingement. **a** Coronal PD-weighted MRI demonstrates labral degeneration with intralabral ossification (*white arrow*). Separation is seen at the chondrolabral junction (*black arrow*). There is moderate to high-grade chondral wear over the superior femoral head and anterosuperior dome (*arrowheads*). **b** Axial oblique PD-weighted image shows a non-displaced tear of the anterior and anterosuperior labrum (*arrow*), with

an associated intralabral cyst (*arrowhead*). **c** Arthroscopy image in the same patient demonstrates the labrum (L), acetabular (A), and femoral head (F) articular surfaces. An intrasubstance labral tear between 12 and 4 o'clock (*white arrows*), impaction erythema (*asterisk*), and chondral delamination at the transition zone (*arrowhead*) are seen. **d** There is moderate chondral wear (*black arrows*) over the femoral head, and normal cartilage is seen adjacent to this area (F)

dGEMRIC involves intravenous administration of gadolinium contrast to assesses T1 relaxation of cartilage, requiring an injection followed by brief exercise and then

scanning after 60–90 minutes. The distribution of gadolinium in the cartilage is inversely proportional to its glycosaminoglycan content. Areas of chondral degeneration

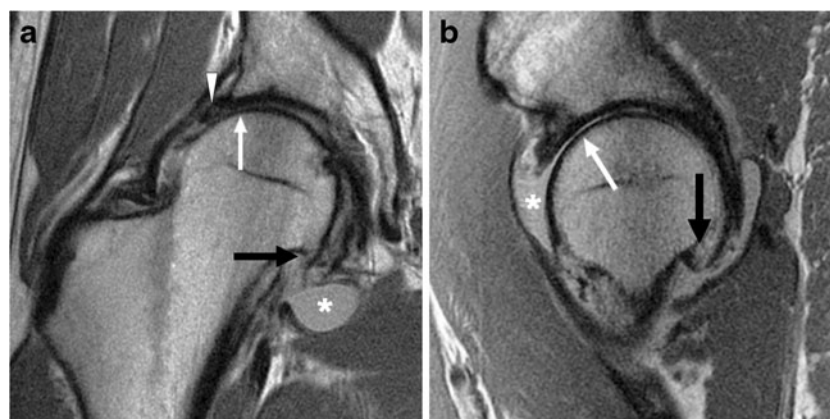
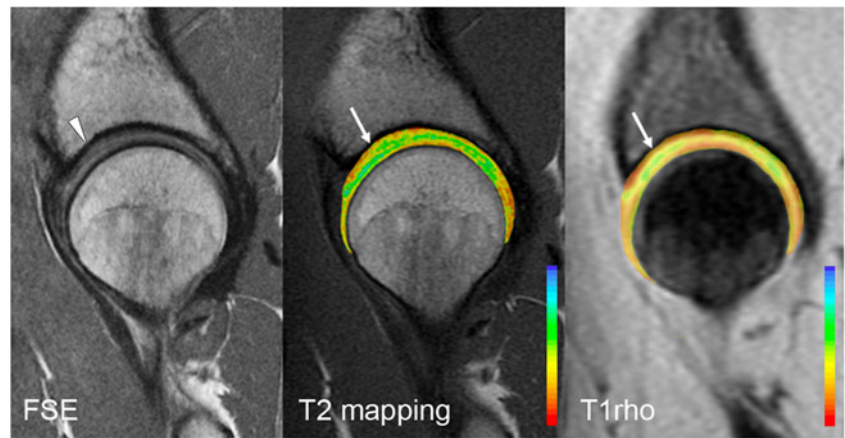


Fig. 9 A 36-year-old man with cam-type FAI and severe osteoarthritis. Coronal (**a**) and sagittal (**b**) PD-weighted MR images of the right hip demonstrate chronic degeneration of the labrum (*arrowhead*). Chondral loss with extensive bone-on-bone contact is seen over the superior

femoral head (*white arrow*). Subcapital femoral neck osteophytes are also seen (*black arrow*). Reactive synovitis with effusion is demonstrated (*asterisk*)

Fig. 10 Sagittal PD-weighted MRI of the hip in a 30-year-old woman demonstrates mild chondral hyperintensity over the anterosuperior acetabular dome (arrowhead), with corresponding prolongation of relaxation times on T2 mapping and T1rho images (white arrows)



with decreased glycosaminoglycan will have increased gadolinium concentration, and therefore reduced T1 relaxation times. Studies have shown that subjects with FAI have significantly lower T1 relaxation values in hip cartilage compared to asymptomatic individuals [47].

$T1\rho$ relaxation times have been correlated with proteoglycan content, and increased values of $T1\rho$ reflect proteoglycan loss [48]. T2 mapping reveals changes in collagen orientation. Disorganization of collagen occurs with cartilage degeneration, resulting in prolonged T2 relaxation times [49]. Patients with FAI have significantly higher T1rho and T2 relaxation times [50], corresponding to changes in proteoglycan and collagen content and structure (Fig. 10).

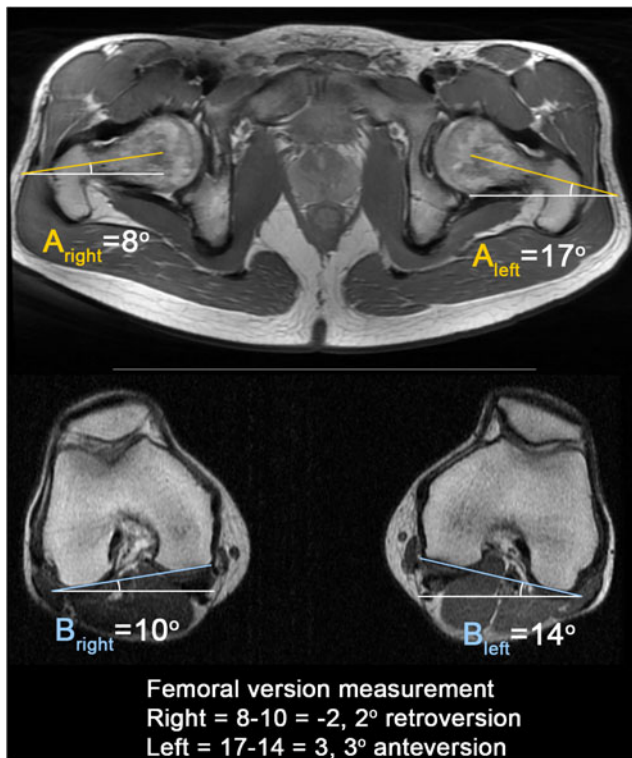


Fig. 11 Calculation of femoral version corrected for distal femoral rotation. On the straight axial image(s) of the hip/pelvis covering the femoral head and neck, a line is drawn between the center of the femoral head and center of the femoral neck at its narrowest point to calculate the uncorrected femoral anteversion angle (A; A is a negative value when the femur is retroverted). To correct for distal femoral rotation, another line is drawn along the posterior border of the femoral condyles to calculate the angle (B; B is a negative value when the knee is internally rotated). Femoral version = A – B. A positive value indicates femoral anteversion. A negative value indicates femoral retroversion. Normal femoral anteversion is approximately 12–13°

Measurements

Alpha angles

Alpha angles are measured utilizing oblique axial images, obtained parallel to the long axis of the femoral neck, through the midportion of the femoral neck (Fig. 3). An alpha angle of >55° is considered a risk factor for FAI [51], although there is considerable overlap between the range of alpha values in symptomatic and non-

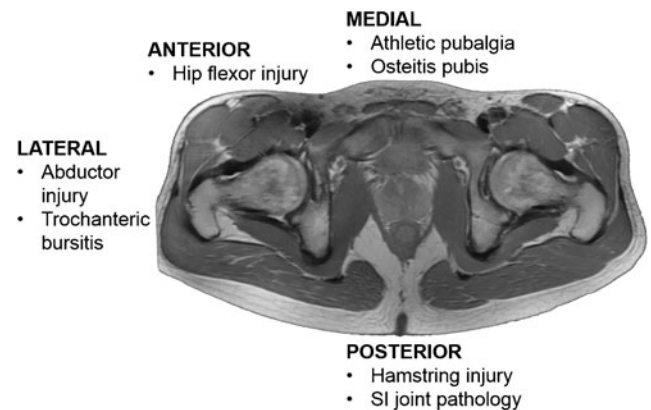


Fig. 12 Compensatory injuries associated with FAI. Due to the altered biomechanics, there is increased strain on surrounding joints, tendons, and muscles, predisposing to injury. Preoperative MRI evaluation of FAI should include assessment of these structures

symptomatic subjects, the measured alpha angle should be considered in the clinical context of the patient's symptoms [52].

Femoral anteversion

Femoral anteversion (antetorsion) is the angle between the femoral neck and the femoral condyles. This can be calculated by measuring angles on the straight or oblique axial images of the femoral neck using a correction factor, taking into account the relative anteversion or retroversion of the femoral condyles (Fig. 11) [53]. Normal femoral anteversion is approximately 12–13° [54, 55]. Femoral retroversion or a relative decrease in femoral anteversion exacerbates the effect of a cam or pincer lesion, as impingement may occur with only minimal internal rotation and hip flexion. Increased anteversion results in reduced external rotation, with the potential for impaction of the femur on the posterior acetabulum.

Compensatory injuries

Biomechanical alterations in the hip joint can result in abnormal forces across the pelvis and strain of other muscles and tendons [20] (Fig. 12). The athletic pubalgia spectrum of injuries often coexists with FAI. Consequently, overlapping symptomatology can make the diagnosis challenging for the clinician [56, 57]. Thus, on MRI, readers should also evaluate for features of athletic pubalgia, such as tears of the rectus abdominis-adductor aponeurosis, bone marrow edema adjacent to the pubic symphysis, or a cleft of signal hyperintensity extending from the interpubic disk along the inferomedial margin of the pubis (Fig. 13) [58]. The iliopsoas, hip abductor, and hamstring tendons should also be evaluated for concomitant tendinopathy and/or tears. The presence or absence of bursitis should be noted. Sacroiliac and lumbar spine pathology should also be excluded.

Differential diagnoses

MRI can be used for the differential diagnosis of hip pain, including stress fractures and avascular necrosis. Other extra-articular forms of hip impingement can mimic FAI, including subspinous, ischiofemoral, and iliopsoas impingement.

Subspinous impingement occurs where a prominent anterior inferior iliac spine (AIIS) impinges against the femoral neck during flexion [59]. Enlargement or overhang of the AIIS can be developmental or due to prior avulsion or pelvic



Fig. 13 Coronal PD-weighted image of the pubic symphysis in a 34-year-old man with cam-type FAI and athletic pubalgia. There are linear fluid signal intensity clefts bilaterally, larger on the left, indicative of tears of the adductor longus tendon origins

osteotomy, and can be successfully treated with arthroscopic AIIS decompression [60].

Ischiofemoral impingement involves impingement of the ischial tuberosity and the lesser trochanter, resulting in compression of the intervening quadratus femoris muscle. This is seen on MRI as narrowing of the space between the lesser trochanter and ischial tuberosity, with edema, tear, or fatty atrophy of the quadratus femoris muscle [61].

Conclusion

Knowledge of the mechanisms of injury in FAI can facilitate an understanding of patterns of chondrolabral injury seen on MRI. As advanced chondral wear is a relative contraindication to hip preservation surgery, MRI assessment of the integrity of hip joint cartilage can assist in the selection of patients most likely to benefit from surgery. A description of the underlying osseous morphology and the presence of compensatory soft tissue injuries should also be included in the pre-operative evaluation of FAI.

Compliance with ethical standards

Disclosures H.G. Potter receives institutional research support from GE Healthcare.

Funding None

Open Access This article is distributed under the terms of the Creative Commons Attribution 4.0 International License (<http://creativecommons.org/licenses/by/4.0/>), which permits unrestricted use, distribution, and reproduction in any medium, provided you give appropriate credit to the original author(s) and the source, provide a link to the Creative Commons license, and indicate if changes were made.

References

- Nawabi DH, Bedi A, Tibor LM, Magennis E, Kelly BT (2014) The demographic characteristics of high-level and recreational athletes undergoing hip arthroscopy for femoroacetabular impingement: a sports-specific analysis. *Arthroscopy: J Arthroscopic Related Surg: Off Publ Arthroscopy Assoc North Am Int Arthroscopy Assoc* 30(3):398–405
- Guevara CJ, Pietrobon R, Carothers JT, Olson SA, Vail TP (2006) Comprehensive morphologic evaluation of the hip in patients with symptomatic labral tear. *Clin Orthop Relat Res* 453:277–285
- Beck M, Kalhor M, Leunig M, Ganz R (2005) Hip morphology influences the pattern of damage to the acetabular cartilage: femoroacetabular impingement as a cause of early osteoarthritis of the hip. *J Bone Joint Surg British Vol* 87(7):1012–1018
- Ganz R, Leunig M, Leunig-Ganz K, Harris WH (2008) The etiology of osteoarthritis of the hip: an integrated mechanical concept. *Clin Orthop Relat Res* 466(2):264–272
- Ganz R, Parvizi J, Beck M, Leunig M, Notzli H, Siebenrock KA (2003) Femoroacetabular impingement: a cause for osteoarthritis of the hip. *Clin Orthop Relat Res* 417:112–120
- Bedi A, Kelly BT, Khanduja V (2013) Arthroscopic hip preservation surgery: current concepts and perspective. *Bone Joint J* 95-b(1):10–19
- Ng VY, Arora N, Best TM, Pan X, Ellis TJ (2010) Efficacy of surgery for femoroacetabular impingement: a systematic review. *Am J Sports Med* 38(11):2337–2345
- Malviya A, Stafford GH, Villar RN (2012) Impact of arthroscopy of the hip for femoroacetabular impingement on quality of life at a mean follow-up of 3.2 years. *J Bone Joint Surg British Vol* 94(4):466–470
- Freeman CR, Azzam MG, Leunig M (2014) Hip preservation surgery: surgical care for femoroacetabular impingement and the possibility of preventing hip osteoarthritis. *J Hip Preserv Surg* 1(2):46–55
- Beck M, Leunig M, Parvizi J, Boutier V, Wyss D, Ganz R (2004) Anterior femoroacetabular impingement: part II. Midterm results of surgical treatment. *Clin Orthop Relat Res* 418:67–73
- Bedi A, Chen N, Robertson W, Kelly BT (2008) The management of labral tears and femoroacetabular impingement of the hip in the young, active patient. *Arthroscopy: J Arthroscopic Related Surg: Off Publ Arthroscopy Assoc North Am Int Arthroscopy Assoc* 24(10):1135–1145
- Meftah M, Rodriguez JA, Panagopoulos G, Alexiades MM (2011) Long-term results of arthroscopic labral debridement: predictors of outcomes. *Orthopedics* 34(10):e588–592
- Frank JM, Harris JD, Erickson BJ et al (2015) Prevalence of Femoroacetabular Impingement Imaging Findings in Asymptomatic Volunteers: A Systematic Review. *Arthroscopy: J Arthroscopic Related Surg: Off Publ Arthroscopy Assoc N Am Int Arthroscopy Assoc*. doi:10.1016/j.arthro.2014.11.042
- Beaule PE, Allen DJ, Clohisy JC, Schoenecker P, Leunig M (2009) The young adult with hip impingement: deciding on the optimal intervention. *J bone Joint Surg Am Vol* 91(1):210–221
- Bredella MA, Ulbrich EJ, Stoller DW, Anderson SE (2013) Femoroacetabular impingement. *Magn Reson Imaging Clin N Am* 21(1):45–64
- Tannast M, Siebenrock KA, Anderson SE (2007) Femoroacetabular impingement: radiographic diagnosis—what the radiologist should know. *AJR Am J Roentgenol* 188(6):1540–1552
- Bedi A, Dolan M, Magennis E, Lipman J, Buly R, Kelly BT (2012) Computer-assisted modeling of osseous impingement and resection in femoroacetabular impingement. *Arthroscopy: J Arthroscopic Related Surg: Off Publ Arthroscopy Assoc N Am Int Arthroscopy Assoc* 28(2):204–210
- Gold SL, Burge AJ, Potter HG (2012) MRI of hip cartilage: joint morphology, structure, and composition. *Clin Orthop Relat Res* 470(12):3321–3331
- Bedi A, Kelly BT (2013) Femoroacetabular impingement. *J Bone Joint Surg Am Vol* 95(1):82–92
- Bedi A, Dolan M, Leunig M, Kelly BT (2011) Static and dynamic mechanical causes of hip pain. *Arthroscopy: J Arthroscopic Related Surg: Off Publ Arthroscopy Assoc N Am Int Arthroscopy Assoc* 27(2):235–251
- Siebenrock KA, Wahab KH, Werlen S, Kalhor M, Leunig M, Ganz R (2004) Abnormal extension of the femoral head epiphysis as a cause of cam impingement. *Clin Orthop Relat Res* 418:54–60
- Byrd JW (2014) Femoroacetabular impingement in athletes: current concepts. *Am J Sports Med* 42(3):737–751
- Myers SR, Eijer H, Ganz R (1999) Anterior femoroacetabular impingement after periacetabular osteotomy. *Clin Orthopaedics Related Res* (363):93–99
- Domb BG, Philippon MJ, Giordano BD (2013) Arthroscopic capsulotomy, capsular repair, and capsular plication of the hip: relation to atraumatic instability. *Arthroscopy: J Arthroscopic Related Surgery: Off Publ Arthroscopy Assoc N Am Int Arthroscopy Assoc* 29(1):162–173
- Hetsroni I, Dela Torre K, Duke G, Lyman S, Kelly BT (2013) Sex differences of hip morphology in young adults with hip pain and labral tears. *Arthroscopy: J Arthroscopic Related Surg: Off Publ Arthroscopy Assoc N Am Int Arthroscopy Assoc* 29(1):54–63
- Clohisy JC, Nunley RM, Carlisle JC, Schoenecker PL (2009) Incidence and characteristics of femoral deformities in the dysplastic hip. *Clin Orthop Relat Res* 467(1):128–134
- Smith TO, Hilton G, Toms AP, Donell ST, Hing CB (2011) The diagnostic accuracy of acetabular labral tears using magnetic resonance imaging and magnetic resonance arthrography: a meta-analysis. *Eur Radiol* 21(4):863–874. doi:10.1007/s00330-010-1956-7
- Sutter R, Zubler V, Hoffmann A et al (2014) Hip MRI: how useful is intraarticular contrast material for evaluating surgically proven lesions of the labrum and articular cartilage? *AJR. Am J Roentgenol* 202(1):160–169
- Zlatkin MB, Pevsner D, Sanders TG, Hancock CR, Ceballos CE, Herrera MF (2010) Acetabular labral tears and cartilage lesions of the hip: indirect MR arthrographic correlation with arthroscopy—a preliminary study. *AJR Am J Roentgenol* 194(3):709–714
- Mintz DN, Hooper T, Connell D, Buly R, Padgett DE, Potter HG (2005) Magnetic resonance imaging of the hip: detection of labral and chondral abnormalities using noncontrast imaging. *Arthroscopy: J Arthroscopic Related Surg: Off Publ Arthroscopy Assoc N Am Int Arthroscopy Assoc* 21(4):385–393
- Naraghi A, White LM (2015) MRI of Labral and Chondral Lesions of the Hip. *Am J Roentgenol* 205(3):479–490
- Smith TO, Simpson M, Ejindu V, Hing CB (2013) The diagnostic test accuracy of magnetic resonance imaging, magnetic resonance arthrography and computer tomography in the detection of chondral lesions of the hip. *Eur J Orthopaedic Surgery Traumatol: Orthopedie Traumatologie* 23(3):335–344

33. Giaconi JC, Link TM, Vail TP et al (2011) Morbidity of direct MR arthrography. *AJR Am J Roentgenol* 196(4):868–874
34. Saupé N, Zanetti M, Pfirrmann CW, Wels T, Schwenke C, Hodler J (2009) Pain and other side effects after MR arthrography: prospective evaluation in 1085 patients. *Radiology* 250(3):830–838
35. Petchprapa CN, Dunham KS, Lattanzi R, Recht MP (2013) Demystifying radial imaging of the hip. *Radiographics: Rev Publ Radiol Soc N Am, Inc* 33(3):E97–e112
36. Leunig M, Beck M, Kalhor M, Kim YJ, Werlen S, Ganz R (2005) Fibrocystic changes at anterosuperior femoral neck: prevalence in hips with femoroacetabular impingement. *Radiology* 236(1):237–246
37. Zaltz I, Kelly BT, Hetsroni I, Bedi A (2013) The crossover sign overestimates acetabular retroversion. *Clin Orthop Relat Res* 471(8):2463–2470
38. Anderson LA, Kapron AL, Aoki SK, Peters CL (2012) Coxa profunda: is the deep acetabulum overcovered? *Clin Orthop Relat Res* 470(12):3375–3382
39. Pfirrmann CW, Mengiardi B, Dora C, Kalberer F, Zanetti M, Hodler J (2006) Cam and pincer femoroacetabular impingement: characteristic MR arthrographic findings in 50 patients. *Radiology* 240(3):778–785
40. Leunig M, Nho SJ, Turchetto L, Ganz R (2009) Protrusio acetabuli: new insights and experience with joint preservation. *Clin Orthop Relat Res* 467(9):2241–2250
41. Kassirjian A, Brisson M, Palmer WE (2007) Femoroacetabular impingement. *Eur J Radiol* 63(1):29–35
42. Studler U, Kalberer F, Leunig M et al (2008) MR arthrography of the hip: differentiation between an anterior sublabral recess as a normal variant and a labral tear. *Radiology* 249(3):947–954
43. Dinauer PA, Murphy KP, Carroll JF (2004) Sublabral sulcus at the posteroinferior acetabulum: a potential pitfall in MR arthrography diagnosis of acetabular labral tears. *AJR Am J Roentgenol* 183(6):1745–1753
44. DuBois DF, Omar IM (2010) MR imaging of the hip: normal anatomic variants and imaging pitfalls. *Magn Reson Imaging Clin N Am* 18(4):663–674
45. Kassirjian A, Yoon LS, Belzile E, Connolly SA, Millis MB, Palmer WE (2005) Triad of MR arthrographic findings in patients with cam-type femoroacetabular impingement. *Radiology* 236(2):588–592
46. Werlen S, Leunig M, Ganz R Magnetic Resonance Arthrography of the Hip in Femoroacetabular Impingement: Technique and Findings. *Operativ Tech Orthopaedics*, 15(3):191–203
47. Bittersohl B, Steppacher S, Haamberg T et al (2009) Cartilage damage in femoroacetabular impingement (FAI): preliminary results on comparison of standard diagnostic vs delayed gadolinium-enhanced magnetic resonance imaging of cartilage (dGEMRIC). *Osteoarthritis Cartil / OARS, Osteoarthritis Res Soc* 17(10):1297–1306
48. Wheaton AJ, Casey FL, Gougoutas AJ et al (2004) Correlation of T1rho with fixed charge density in cartilage. *J Magnet Resonance Imaging: JMRI* 20(3):519–525
49. Riley GM, McWalter EJ, Stevens KJ, Safran MR, Lattanzi R, Gold GE (2015) MRI of the Hip for the evaluation of femoroacetabular impingement; past, present, and future. *J Magnet Resonance Imaging: JMRI* 41(3):558–572
50. Subburaj K, Valentinitich A, Dillon AB et al (2013) Regional variations in MR relaxation of hip joint cartilage in subjects with and without femoralacetabular impingement. *Magn Reson Imaging* 31(7):1129–1136
51. Notzli HP, Wyss TF, Stoecklin CH, Schmid MR, Treiber K, Hodler J (2002) The contour of the femoral head-neck junction as a predictor for the risk of anterior impingement. *J Bone Joint Surg British Vol* 84(4):556–560
52. Sutter R, Dietrich TJ, Zingg PO, Pfirrmann CW (2012) How useful is the alpha angle for discriminating between symptomatic patients with cam-type femoroacetabular impingement and asymptomatic volunteers? *Radiology* 264(2):514–521. doi:10.1148/radiol.12112479
53. Sutter R, Dietrich TJ, Zingg PO, Pfirrmann CWA (2015) Assessment of Femoral Antetorsion With MRI: Comparison of Oblique Measurements to Standard Transverse Measurements. *Am J Roentgenol* 205(1):130–135. doi:10.2214/AJR.14.13617
54. Sutter R, Dietrich TJ, Zingg PO, Pfirrmann CW (2012) Femoral antetorsion: comparing asymptomatic volunteers and patients with femoroacetabular impingement. *Radiology* 263(2):475–483
55. Prasad R, Vettivel S, Isaac B, Jeyaseelan L, Chandi G (1996) Angle of torsion of the femur and its correlates. *Clin Anatomy (New York, NY)* 9(2):109–117
56. Hammoud S, Bedi A, Magennis E, Meyers WC, Kelly BT (2012) High incidence of athletic pubalgia symptoms in professional athletes with symptomatic femoroacetabular impingement. *Arthroscopy: J Arthroscopic Related Surg: Off Publ Arthroscopy Assoc N Am Int Arthroscopy Assoc* 28(10):1388–1395
57. Economopoulos KJ, Milewski MD, Hanks JB, Hart JM, Diduch DR (2014) Radiographic evidence of femoroacetabular impingement in athletes with athletic pubalgia. *Sports Health* 6(2):171–177
58. Omar IM, Zoga AC, Kavanagh EC et al (2008) Athletic pubalgia and "sports hernia": optimal MR imaging technique and findings. *Radiographics: Rev Publ Radiol Soc N Am, Inc* 28(5):1415–1438
59. Larson CM, Kelly BT, Stone RM (2011) Making a case for anterior inferior iliac spine/subspine hip impingement: three representative case reports and proposed concept. *Arthroscopy: J Arthroscopic Related Surg: Off Publ Arthroscopy Assoc N Am Int Arthroscopy Assoc* 27(12):1732–1737
60. Hetsroni I, Larson CM, Dela Torre K, Zbeda RM, Magennis E, Kelly BT (2012) Anterior inferior iliac spine deformity as an extra-articular source for hip impingement: a series of 10 patients treated with arthroscopic decompression. *Arthroscopy: J Arthroscopic Related Surg: Off Publ Arthroscopy Assoc N Am Int Arthroscopy Assoc* 28(11):1644–1653
61. Torriani M, Souto SC, Thomas BJ, Ouellette H, Bredella MA (2009) Ischiofemoral impingement syndrome: an entity with hip pain and abnormalities of the quadratus femoris muscle. *AJR Am J Roentgenol* 193(1):186–190