

## REVIEW

# Divergence with gene flow within the recent chipmunk radiation (*Tamias*)

J Sullivan<sup>1,2</sup>, JR Demboski<sup>3</sup>, KC Bell<sup>4</sup>, S Hird<sup>5</sup>, B Sarver<sup>1,2</sup>, N Reid<sup>5</sup> and JM Good<sup>6</sup>

Increasing data have supported the importance of divergence with gene flow (DGF) in the generation of biological diversity. In such cases, lineage divergence occurs on a shorter timescale than does the completion of reproductive isolation. Although it is critical to explore the mechanisms driving divergence and preventing homogenization by hybridization, it is equally important to document cases of DGF in nature. Here we synthesize data that have accumulated over the last dozen or so years on DGF in the chipmunk (*Tamias*) radiation with new data that quantify very high rates of mitochondrial DNA (mtDNA) introgression among para- and sympatric species in the *T. quadrivittatus* group in the central and southern Rocky Mountains. These new data (188 cytochrome b sequences) bring the total number of sequences up to 1871; roughly 16% (298) of the chipmunks we have sequenced exhibit introgressed mtDNA. This includes ongoing introgression between subspecies and between both closely related and distantly related taxa. In addition, we have identified several taxa that are apparently fixed for ancient introgressions and in which there is no evidence of ongoing introgression. A recurrent observation is that these introgressions occur between ecologically and morphologically diverged, sometimes non-sister taxa that engage in well-documented niche partitioning. Thus, the chipmunk radiation in western North America represents an excellent mammalian example of speciation in the face of recurrent gene flow among lineages and where biogeography, habitat differentiation and mating systems suggest important roles for both ecological and sexual selection.

*Heredity* (2014) **113**, 185–194; doi:10.1038/hdy.2014.27; published online 30 April 2014

## INTRODUCTION

Increasing evidence has accumulated over the last two decades (for example, Rice and Hostert, 1993) that supports divergence with gene flow (DGF) as an important driver of biological diversity. This process differs from classical models of speciation, in which divergence is postulated to occur in allopatry or in the absence of gene flow between diverging lineages and in which hybridization on secondary contact causes homogenization of diverging lineages (for example, Taylor *et al.*, 2006; Zitari *et al.*, 2012). However, as pointed out by Jiggins (2008) and Smadja and Butlin (2010), allopatric versus sympatric models of speciation represent extremes of a continuum, with no possibility of gene flow during divergence in the former and no (geographic) barriers to gene flow during divergence in the latter. Because range fluctuations often occur over shorter temporal scales than that of the evolution of complete reproductive isolation, speciation may frequently involve ephemeral periods of allopatric differentiation that are punctuated by intermittent periods of contact during which introgression between and among diverging lineages may take place (for example, Fitzpatrick and Turelli, 2006). This may be especially critical in instances of rapid radiations simply due to the fact that multiple radiating lineages can provide many opportunities for range fluctuations to result in temporally variable range overlap. Therefore, important questions in speciation focus on the extent and

nature of gene flow that is occurring or has occurred during the process of lineage divergence and on the genomic architecture and trait associations characterizing that differentiation (Smadja and Butlin, 2010; Wu, 2001); that is, how common is DGF (for example, Pinho and Hey, 2010) and how does it occur?

Here we present a synthesis of current data on DGF in a diverse group of ground squirrels, chipmunks of the genus *Tamias*, including previously unpublished genetic data and analyses that indicate that the many instances of mitochondrial introgression we have identified illustrate a gradual attenuation of gene flow with increasing depth of divergence (Reid *et al.*, 2012), which is one of the easiest to test predictions of DGF. Thus, lineage differentiation is occurring at a more rapid rate in this radiation than is the evolution of complete reproductive isolation and this has resulted in multiple examples of gene flow between morphologically and ecologically differentiated taxa that are not sister species.

## Study system

Interest in the biology of the 23 described species of western chipmunks (*Tamias*, subgenus *Neotamias*; but see Baker *et al.*, 2003; Piaggio and Spicer, 2001) predates the modern synthesis (for example, Merriam, 1897). This group is one of the more speciose mammalian genera in North America and has the hallmarks of a recent, rapid

<sup>1</sup>Department of Biological Sciences and Institute for Bioinformatics and Evolutionary Studies, University of Idaho, Moscow, ID, USA; <sup>2</sup>BEACON Center for the Study of Evolution in Action; <sup>3</sup>Department of Zoology, Denver Museum of Nature & Science, Denver, CO, USA; <sup>4</sup>Department of Biology and Museum of Southwestern Biology, University of New Mexico, Albuquerque, NM, USA; <sup>5</sup>Department of Biological Sciences and Museum of Natural Sciences, Louisiana State University, Baton Rouge, LA, USA and <sup>6</sup>Division of Biological Sciences, University of Montana, Missoula, MT, USA

Correspondence: Dr J Sullivan, Department of Biological Sciences and Institute for Bioinformatics and Evolutionary Studies, University of Idaho, PO Box 443051, Moscow, ID 83844-3051, USA.

E-mail: jacks@uidaho.edu

Received 4 November 2013; revised 8 January 2014; accepted 17 January 2014; published online 30 April 2014

radiation (for example, Reid *et al.*, 2012; this study). Western chipmunks are widely distributed in a diverse array of habitats across western North America (Hall, 1981) and in some areas (for example, Sierra Nevada) up to four species may be co-distributed. One of the ecologically intriguing features of chipmunks is the strong niche partitioning observed among broadly co-distributed species, typically resulting in altitudinal zonation and extremely narrow zones of parapatry between some species (Heller, 1970, 1971; Chappell, 1978; Bergstrom, 1992). Early observations of this phenomenon (for example, Grinnell and Storer, 1924) in the eastern Sierra Nevada among least, yellow-pine, lodgepole and alpine chipmunks (*T. minimus*, *T. amoenus*, *T. speciosus* and *T. alpinus*, respectively) led to extensive studies that documented altitudinal zonation and examined the ecological and physiological mechanisms underlying niche partitioning (for example, Howell, 1929; Johnson, 1943; Heller, 1971; Heller and Gates, 1971; Chappell, 1978). Other instances of habitat partitioning between sympatric chipmunks are well documented, although physiological and ecological mechanisms have not been as thoroughly examined: Uinta and cliff chipmunks (*T. umbrinus* and *T. dorsalis*) in Nevada (Brown, 1971); dusky and Merriam's chipmunks (*T. obscurus* and *T. merriami*) in southern California (Callahan, 1977; Blankenship, 1985; Best and Granai, 1994a, b); yellow-pine and red-tailed chipmunks (*T. amoenus* and *T. ruficaudus*) in the Inland Northwest (Gambs, 1965; Best, 1993); and least, Colorado and Uinta chipmunks (*T. minimus*, *T. quadrivittatus* and *T. umbrinus*) in the Front Range of Colorado (Bergstrom and Hoffmann, 1991; Bergstrom, 1992). These examples often include a narrowly distributed habitat specialist (for example, red-tailed chipmunks in the Inland Northwest) that excludes a more widely distributed habitat generalist (for example, yellow-pine chipmunks in the Inland Northwest) from the specialist's preferred habitat (for example, mesic forests).

### Reproductive biology, sexual selection and genital morphology

Although details of the reproductive biology are not well known for every species of western chipmunk, all studied appear to be predominantly monestrous and each female mates only on a single day per year (Callahan, 1981). In preparation for mating, a female represses her territoriality and engages in visual (tail waving) and vocal (chip vocalizations) advertisement of approaching estrus (Callahan, 1981). Once in estrus, the female initiates a mating chase and subsequently copulates with one or more pursuing males (Callahan, 1981; Compton and Callahan, 1995). A very high incidence of multiple paternity has been reported in the yellow-pine chipmunk (*T. amoenus*), with more than 90% of litters sired by multiple males (Schulte-Hostedde *et al.*, 2004). Such high levels of promiscuity could result in intense sexual selection through direct sperm competition and female choice (but see Schulte-Hostedde *et al.*, 2004), and indeed eastern chipmunks (*T. striatus*) exhibit significant positive Bateman gradients for both genders (Bergeron *et al.*, 2012). Consistent with this, patterns of variation for several reproductive characters within (Schulte-Hostedde and Millar, 2004) and between species (White, 1953) suggest a strong influence of sexual selection.

The most striking cases of rapid phenotypic evolution in chipmunks are found in patterns of genital evolution. In particular, the male penile bone (that is, the baculum or *os penis*) shows rapid differentiation in size and shape between closely related species (White, 1953; Patterson and Thaeler, 1982; Sutton and Patterson, 2000; Figure 3). Within *Tamias*, the baculum occupies an extremely distal position in the penis and bacular morphology is characterized by modest variation within species, but strong discontinuities among

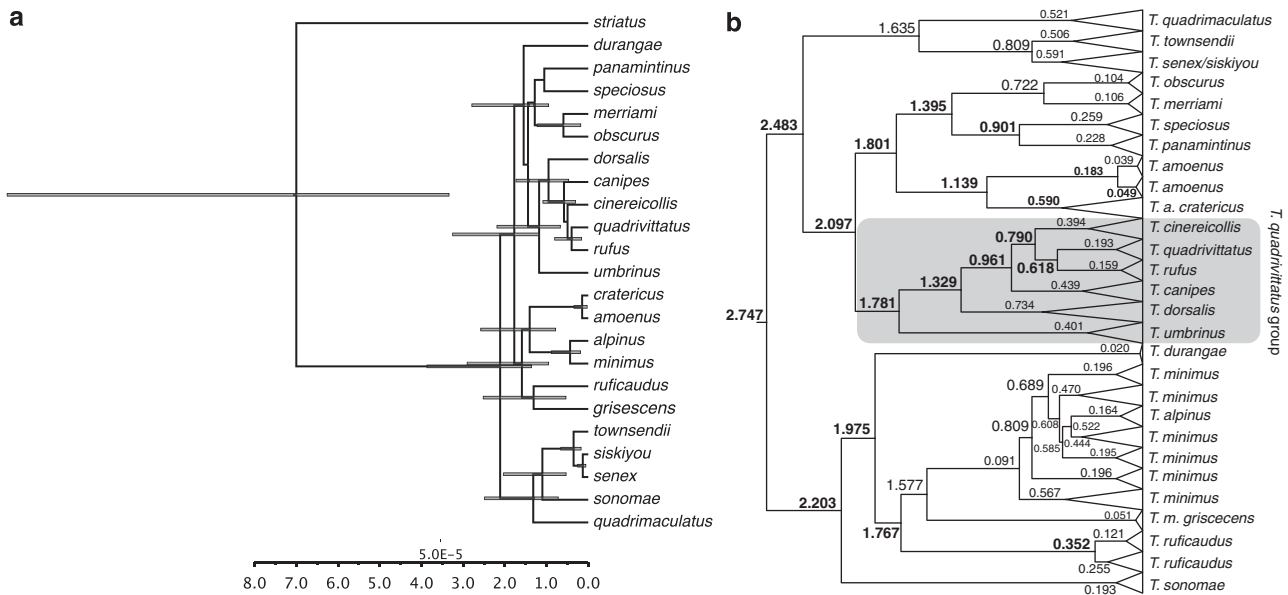
species (White, 1953; Patterson and Thaeler, 1982; Sutton and Patterson, 2000). Such discontinuities occur in parapatry and, in some instances, have been correlated with allozyme differentiation (for example, Sullivan and Petersen, 1988) and discontinuities in chip vocalizations (Gannon and Lawlor, 1989). These results, along with the lack of clear intermediates, have been interpreted as evidence that bacular discontinuities are reliable indicators, and perhaps even the primary mechanism, of reproductive isolation (for example, Patterson and Thaeler, 1982; Sutton, 1992; Sutton and Patterson, 2000). Consequently, bacular morphology has emerged as the defining morphological character for species delimitation within the genus.

### History of *Tamias* phylogenetics

Because of their conspicuous nature and importance in biogeography (for example, Lomolino *et al.*, 2006) the 25 species of chipmunks have been the focus of numerous phylogenetic studies (for example, Ellis and Maxson, 1979; Levenson *et al.*, 1985; Piaggio and Spicer, 2000, 2001; Reid *et al.*, 2012). Earlier studies recognized three major clades within *Tamias* (classified as either subgenera or separate genera; for example, Jameson, 1999; Piaggio and Spicer, 2001), one in Asia, one in eastern North America and the large radiation (subgenus *Neotamias*) in western North America that may have originated  $\sim 2.75$  Myr (Figure 1, although with a large credibility interval). In addition, previous studies have recognized conflicting species groups within subgenus *Neotamias*, in part because congruence among data sets for these taxa has been elusive. Since the first application of mitochondrial DNA (mtDNA) sequences to *Tamias* phylogeny (Piaggio and Spicer, 2000, 2001), there have been indications of incongruence between the mtDNA gene tree, allozyme estimates and taxonomy (defined primarily by bacular morphology). Subsequent phylogeographic studies with denser geographic sampling have demonstrated that this incongruence is a recurring observation in the subgenus (for example, *T. ruficaudus*—Good and Sullivan, 2001; *T. amoenus*—Demboski and Sullivan, 2003, in the Inland Northwest). Furthermore, these studies have demonstrated that hybridization (between either species or subspecies) is the cause of incongruence (Good *et al.*, 2003, 2008). The most comprehensive phylogenetic data set to date is that of Reid *et al.* (2012), which we have reanalyzed in this study using relaxed-clock approaches (Figure 1). This phylogeny will be used to structure the synthesis presented here; these data were generated from a broad geographic and taxonomic sample from four nuclear genes involved in reproduction.

### Our conceptualization of DGF

We view the concept of DGF in its broadest sense (for example, Smadja and Butlin, 2010). That is, DGF certainly includes instances of ecological speciation, say between host races (for example, Pecoud *et al.*, 2009), but it can apply to any instance where divergence has occurred or at least persisted in the face of introgression. One of the most straightforward predictions of the hypothesis that DGF has occurred in the chipmunk radiation is that hybridization is expected to be more common between recently diverged taxa and should attenuate with time since divergence. Wu's (2001) verbal model of DGF discretizes this expected gradual attenuation of interspecific gene flow into four stages. However, because these stages are arbitrary and other aspects of this verbal model are controversial (for example, the importance of divergence hitchhiking; Feder and Nosil, 2010), we synthesize existing data on DGF in western chipmunks using relative divergence order provided by relaxed molecular clock analyses (Figure 1).



**Figure 1** Chronograms for 20 of 23 species of western chipmunks in the subgenus *Neotamias* (missing are *T. bulleri*, *T. palmeri* and *T. ochrogenys*) based on reanalysis of four nuclear genes (acrosin, zonadhesin, zona pellucida proteins 2 and 3) published by Reid *et al.* (2012). (a) Species-tree estimate derived using \*BEAST from four nuclear loci reported in Reid *et al.* (2012). These four phased nuclear loci from individuals assigned to species based on bacular morphology were used to estimate a posterior distribution of species trees using \*BEAST (Heled and Drummond, 2010). The analysis assumed an uncorrelated lognormal clock prior and birth–death tree prior. The MCMC chain was run for 50 000 000 generations and sampled every 5000 generations. The posterior distribution of species trees was summarized into a point estimate of topology using TreeAnnotator v1.7.5 (available: [www.beast2.org/wiki/index.php/TreeAnnotator](http://www.beast2.org/wiki/index.php/TreeAnnotator)) after removing 1000 samples (10%) as a burn-in, setting a posterior probability threshold of 0.5 and using median node heights. The tree was visualized using FigTree v1.4.0 (available: <http://tree.bio.ed.ac.uk/software/figtree/>), and the root has been rescaled to a depth of 7 Myr. (b) The concatenated tree was rooted with *T. striatus* and rescaled the root node to be 7 Myr based on Late Miocene date of Dahlquist *et al.* (1996). PartitionFinder 1.0.1 (Lanfear *et al.*, 2012) was used to choose a partitioning scheme based on the Bayesian Information Criterion (BIC) that placed zonadhesin, zona pellucida protein 2 and zona pellucida protein 3 under a K80+I+ $\Gamma$  model of sequence evolution and acrosin under an HKY+ $\Gamma$  model of sequence evolution. A posterior distribution of topologies was generated using BEAST 1.7.4 (Drummond *et al.*, 2012). We ran two independent runs of 50 000 000 generations and sampled every 5000 generations. Convergence was assessed by comparing traces, comparing posterior distributions of parameter estimates and ensuring the effective sampling size of each parameter was at least 200 or greater. The two runs were then combined using LogCombiner (available: <https://github.com/SeleniumHQ/selenium/blob/.../LogCombiner.java>) after removing 10% of the samples as a burn-in. A maximum clade credibility tree was generated using TreeAnnotator from the combined distribution of topologies with a posterior probability threshold of 0.5 and median node heights. Associated with nodes are divergence times (in Myr), and those in bold font are nodes that span introgression events. Shaded taxa represent the *T. quadrivittatus* group.

### Detection of hybridization

Incongruence between mtDNA gene trees and bacular morphology is likely a good indicator of introgression in *Tamias* given that species limits defined by bacular morphology have proven to be ecologically and morphologically well circumscribed. However, in our studies described below, we have taken a more rigorous approach to support our conclusions that introgression is the cause of most of the phylogenetic incongruence. Specifically, we examine one or more of four lines of evidence; these are ordered by level of rigor, with the last being the most explicit rejection of coalescent stochasticity. The first is the demonstration that the putatively introgressed haplotypes are geographically structured, which should not be the case for incongruence due to incomplete lineage sorting (Good *et al.*, 2003). Second, congruence between morphology and nuclear microsatellite data (that is, correct assignment of individuals to morphologically defined taxa in Bayesian clustering analyses) support introgression of mtDNA in cases where the mtDNA gene tree is incongruent with morphology (Good *et al.*, 2008; Hird and Sullivan, 2009; Reid *et al.*, 2010). Third, commonly sequenced nuclear genes (for example, *Rag-1*, *c-myc*, *Acp*) from individuals with putatively introgressed mtDNA are expected to sort more slowly due to their larger effective population size ( $N_e$ ). That is, if nuclear genes have sorted (that is, their gene trees are congruent with morphology),

incongruence between mtDNA and morphology is likely due to introgression (Good *et al.*, 2008). Fourth, coalescent simulations on a species tree estimated from nuclear genes can rule out phylogenetic uncertainty and coalescent stochasticity as the cause of incongruence between the mtDNA gene tree and morphology (Reid *et al.*, 2012), leaving introgression as the likely cause. In all the cases described below, one or (usually) more of these lines of evidence has implicated introgression of mtDNA.

### NUMEROUS DIFFERENTIALLY AGED INTROGRESSIONS

In over a decade of field collection and sequencing, we have demonstrated that mtDNA introgression appears to be common between many different species of *Tamias*. These discoveries of introgression are summarized in Table 1. Over 1800 individuals (20 species) have been sequenced, and nearly 300 of them (16%), representing 9 species (40%), exhibit some type of introgressed mtDNA. Note that some of our sampling has targeted potential hybrid zones (for example, Good *et al.*, 2003) and that this may bias these overall estimates of the extent of introgression. Nevertheless, examples of hybridization include intraspecific introgressions between recently diverged, but morphologically differentiated subspecies (for example, *T. r. ruficaudus* and *T. r. simulans*), interspecific introgression between and among several members of a closely related clade or species group (for example,

**Table 1 Summary of mtDNA introgression detected in all 23 species of western chipmunks (subgenus *Neotamias*)**

<i>Taxon</i>	N	# Int. (%)	Source	Div. time (Myr)	Maximum mtDNA % Div	Ref
<i>T. r. ruficaudus</i>	131	0 (0)	NA			1,2
<i>T. r. simulans</i>	175	63 (36)	<i>T. r. ruficaudus</i>	0.35	4.7	1,2
<i>T. a. canicaudus</i>	46	46 (100)	<i>T. r. simulans</i>	2.75	3.2 <sup>a</sup>	2,3
<i>T. a. luteiventris</i>	148	43 (29)	<i>T. r. ruficaudus</i>	2.75	10.0	2,3
Other <i>T. amoenus</i>	122	0 (0)	NA			4
<i>T. dorsalis</i>	54	35 (65)	<i>T. cinereicollis</i> ,	1.33	4.6	5
			<i>T. umbrinus</i> ,	1.78	4.7	5
			<i>T. quadrivittatus</i>	1.33	4.7	5
			Not assignable <sup>b</sup>		4.7	5
<i>T. cinereicollis</i>	25	7 (28)	Not assignable <sup>b</sup>		4.7	5
<i>T. umbrinus</i>	64	9 (19)	Not assignable <sup>b</sup>		4.7	5
<i>T. canipes</i>	8	0 (0)	NA			5
<i>T. rufus</i>	14	0 (0)	NA			5
<i>T. quadrivittatus</i>	38	14 (37)	Not assignable <sup>b</sup>		4.7	5
<i>T. townsendii</i>	6	0 (0)	NA			6
<i>T. ochrogenys</i>	0	NA	NA			NA
<i>T. sonomae</i>	4	0 (0)	NA			6
<i>T. siskiyou</i>	5	0 (0)	NA			6
<i>T. senex</i>	155	0 (0)	NA			5,6
<i>T. quadrimaculatus</i>	221	0 (0)	NA			5,6
<i>T. minimus</i>	305	0 (0)	NA			5
<i>T. panamintinus</i>	15	15 (100)	<i>T. minimus</i>	2.75	10.0 <sup>a</sup>	6,7
<i>T. alpinus</i>	34	0 (0)	NA			6,7
<i>T. speciosus</i>	56	56 (100)	<i>T. minimus</i>	2.75	10.0 <sup>a</sup>	6,7
<i>T. merriami</i>	155	0 (0)	NA			7
<i>T. obscurus</i>	87	0 (0)	NA			7
<i>T. bulleri</i>	1	?	NA			6
<i>T. durangae</i>	1	?	NA			6
<i>T. palmeri</i>	1	?	NA			5
Totals	1871	298				

Abbreviations: mtDNA, mitochondrial DNA; Div, divergence; Int, number of introgressed individuals; NA, not applicable.

1–Good and Sullivan (2001).

2–Good *et al.* (2003).

3–Good *et al.* (2008).

4–Demboski and Sullivan (2003).

5–This study.

6–Reid *et al.* (2012).

7–Demboski *et al.* (in prep).

<sup>a</sup>Only introgressed mtDNA has been identified.

<sup>b</sup>The introgressed mtDNA is clade C in Figure 2 and cannot be assigned as native to any taxon.

*T. quadrivittatus* species group; *T. umbrinus*, *T. dorsalis*, *T. cinereicollis* and *T. quadrivittatus*) and introgression between more distantly related taxa that perhaps span the deepest nodes in the subgenus phylogeny and belong to different species group (for example, *T. ruficaudus* and *T. amoenus*; Figure 1b). Furthermore, there are also instances of apparently complete mtDNA capture in which all individuals of a species or subspecies appear to have introgressed mtDNA (for example, *T. speciosus*, *T. panamintinus*, *T. amoenus canicaudus*). We now discuss each of these case studies in turn.

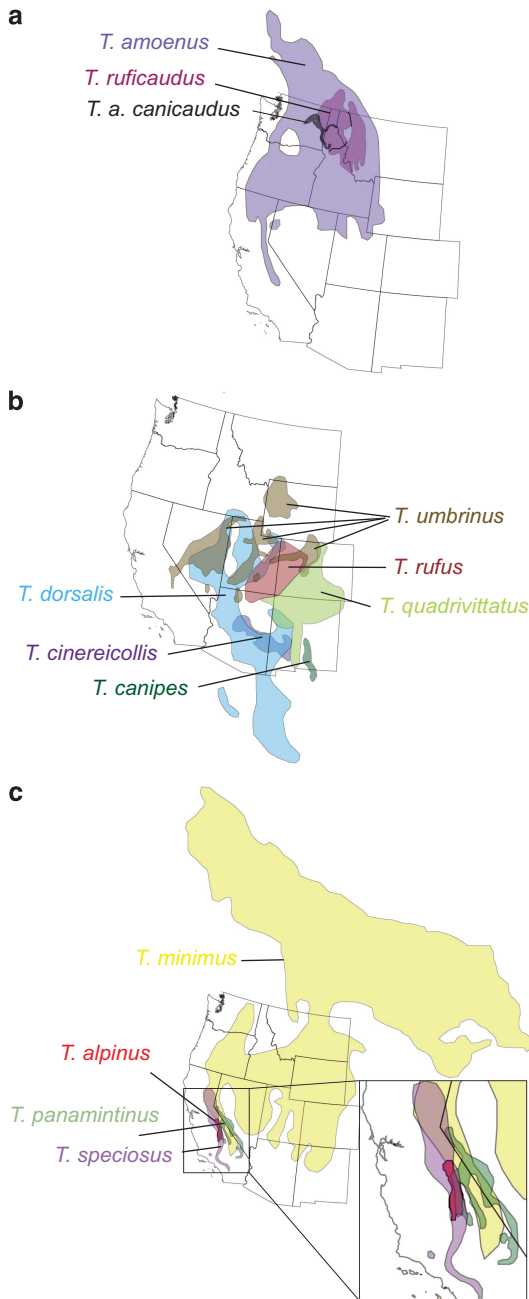
### Chipmunks of the Inland Northwest

The first documentation of hybridization in *Tamias* resulted from comparative phylogeographic studies of forest-dwelling rodents in the Inland Northwest (Good and Sullivan, 2001; Demboski and Sullivan, 2003). To date, four independent instances of introgressive hybridization have been documented in the region.

The first two introgressions occur between the two subspecies of red-tailed chipmunks (*T. ruficaudus*) that were suggested by Patterson and Heaney (1987) to be reproductively isolated species based on a large difference in bacular morphology. This species has a doughnut-shaped distribution in northern Idaho, NW Montana, NE Washington, southern British Columbia and Alberta (Figure 2a), and is endemic to mesic (that is, inland temperate rainforests) and subalpine forests (Gambus, 1965). Coalescent analyses of microsatellite data suggest that these subspecies diverged ~325 000 years ago (Hird and Sullivan, 2009), and this date is supported independently by our relaxed-clock analyses of nuclear gene sequences (Figure 1b). The two subspecies (*T. r. ruficaudus* in the south and east and *T. r. simulans* in the west) contact each other at two distinct hybrid zones (Figure 2a). The southern zone occurs along the Lochsa River in the Clearwater Drainage, which remained free of ice during Pleistocene glacial maxima (Daubenmire, 1975). Populations along the north bank exhibit the *T. r. simulans* baculum and populations along the south bank exhibit the *T. r. ruficaudus* baculum. However, *T. r. ruficaudus* haplotypes have introgressed north of the Lochsa River and all populations between this river and the next drainage to the north (the North Fork of the Clearwater River) exhibit *T. r. simulans* bacula but are fixed for one or more *T. r. ruficaudus* haplotypes (Good and Sullivan, 2001; Good *et al.*, 2003). Microsatellite data (Hird and Sullivan, 2009) indicate that there is virtually no gene flow across the Lochsa River, suggesting that it is an effective barrier to gene flow. However, *T. r. ruficaudus* and *T. r. simulans* are exchanging genes over the Bitterroot Divide (at Lolo Pass) east of the headwaters of the Lochsa River (Hird and Sullivan, 2009). The northern contact zone between these two subspecies occurs near Whitefish Montana, north of the southern extent of Pleistocene glaciation. Palynology from localities of similar latitude in the region suggests that forests had not been established until only ~3000 years ago (Mack *et al.*, 1978), establishing a lower bound for the age of the Whitefish contact zone. In this northern zone, all data (morphology, mtDNA and microsatellites; Good and Sullivan, 2001; Good *et al.*, 2003; Hird *et al.*, 2010) are congruent in indicating a narrow hybrid zone with very little introgression.

The other introgressions in the Inland Northwest both involve interspecific introgression between *T. ruficaudus* and *T. amoenus* (yellow-pine chipmunk), a broadly distributed (Figure 2a) ecological generalist (Sutton, 1992). In the Northern Rockies, a single mtDNA haplotype from *T. r. ruficaudus* has introgressed into populations of *T. a. luteiventris* along the spine of the range in southern British Columbia and Alberta (Good *et al.*, 2003). This event has resulted in the *T. r. ruficaudus* haplotype introgressing outside the species range and apparently (based on somewhat limited sampling) replacing the native *T. a. luteiventris* mtDNA in a few populations. Interestingly, the introgressed haplotype is identical to that found in the northernmost populations of *T. r. ruficaudus*, indicating a relatively recent (relative to the mtDNA mutation rate) introgression event. Reid *et al.* (2010) examined 10 microsatellite loci and sequences from a single nuclear gene (acrosin) in this contact zone. The nuclear data convincingly support nearly complete reproductive isolation, except for a single *T. a. luteiventris* individual with appreciable *T. r. ruficaudus* coancestry. Thus, although the mtDNA introgression appears to have





**Figure 2** Range maps for various introgressing species. (a) *T. amoenus* and *T. ruficaudus* in the Inland Northwest. *T. r. ruficaudus* occurs east of the black line and *T. r. simulans* occurs west of it. *T. a. canicaudus*, in gray shading, has experienced ancient capture of mtDNA that is sister to *T. r. simulans* mtDNA. (b) The *T. quadrivittatus* group of the central and southern Rockies. Although *T. rufus* has a partially overlapping range with *T. umbrinus* and *T. dorsalis*, there are no known localities where it is sympatric with either. (c) Ranges of *T. minimus* and taxa that are monophyletic for haplogroups nested within widespread *T. minimus*. *T. panamintinus* and *T. speciosus* (in the inset) each appear to have become fixed on introgressions from *T. minimus*, whereas *T. alpinus* is likely a very recent derivative of *T. minimus*.

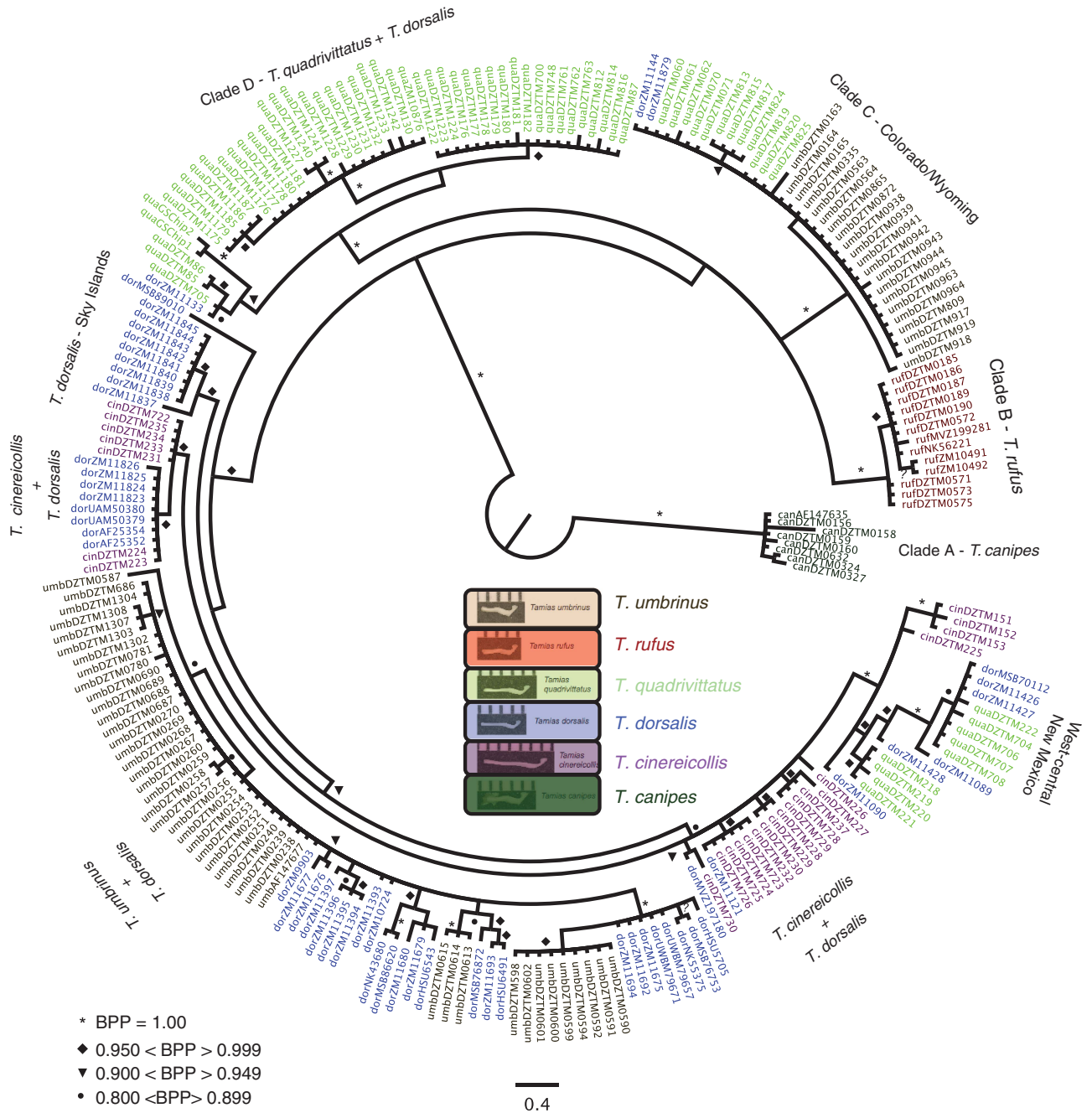
been recent based on shared identical haplotypes (Good *et al.*, 2003), only a hint of introgression was detectable in the nuclear data (Reid *et al.*, 2010).

The fourth introgression in the Inland Northwest is perhaps the most interesting as it involves an ancient but nonrecurrent mtDNA introgression event, resulting in complete fixation across a subspecies range (Good *et al.*, 2003, 2008). The ash-tailed yellow-pine chipmunk, *T. a. canicaudus*, is geographically isolated from other forms of *T. amoenus* and occurs in forest patches east of the Columbia River in central Washington to the Palouse Formation in eastern Washington and into northern Idaho and western Montana. Its pelage is distinct (hence the common name) and its bacular morphology is indistinguishable from populations of *T. a. luteiventris* in the Columbia Mountains to the north and across the Columbia River (Good *et al.*, 2003). All 46 *T. a. canicaudus* individuals we have sequenced (from across the subspecies range) have mtDNA haplotypes that form a reciprocally monophyletic clade with *T. r. simulans*, and these two sister phylogroups are sister to the *T. r. ruficaudus* haplotypes. Thus, this appears to be the result of fixation on an ancient hybridization event between *T. a. canicaudus* and *T. r. simulans*. Microsatellite data confirm that there is no significant contemporary gene flow between these two taxa, nor is there any between *T. a. canicaudus* and its geographically closest conspecific populations, *T. r. luteiventris* (Good *et al.*, 2008). However, gene trees from four nuclear loci (*acr*, *c-myc*, *rag-1* and *acp-1*) have largely sorted between *T. amoenus* and *T. ruficaudus*, supporting the hypothesis of an ancient mtDNA introgression from *T. r. simulans* to *T. a. canicaudus* (Good *et al.*, 2008).

Thus, these four instances of introgression in the Inland Northwest are differentially aged. They include two instances of introgression between subspecies of *T. ruficaudus* (the Lochsa and Whitefish introgressions) that have very different bacular morphologies, presumably following secondary contact. The other two involve interspecific introgression from *T. ruficaudus* to *T. amoenus*; one of these is very recent, and possibly ongoing (the Northern Rockies introgression of *T. r. ruficaudus* into *T. a. luteiventris*), and the other represents fixation in *T. a. canicaudus* of an ancient introgression of *T. r. simulans*-like mtDNA.

#### Chipmunks of the southern Rockies/Great Basin—*T. quadrivittatus* group

The *T. quadrivittatus* group has been circumscribed based on mtDNA to include *T. bulleri* and *T. durangae*, two species endemic to the highlands of northern Mexico, as well as *T. umbrinus*, *T. palmeri*, *T. dorsalis*, *T. cinereicollis*, *T. rufus*, *T. canipes* and *T. quadrivittatus* (Piaggio and Spicer, 2000, 2001). The latter seven species are all distributed across the Great Basin and central and southern Rocky Mountains (Figure 2b), and Reid *et al.* (2012) based on sequences from nuclear reproductive protein coding genes demonstrated that six of these species (*T. palmeri* was not included) form a pectinate tree (Figure 1), with *T. umbrinus* as sister to the rest, followed by *T. dorsalis*. These relationships are strongly supported in both the species tree (Figure 1a) estimated with \*BEAST (Heled and Drummond, 2010) and the concatenated tree (Figure 1b). The rest of the *quadrivittatus* group tree is less well supported. Poorly supported nodes suggest that *T. rufus* is sister to *T. quadrivittatus*, followed by *T. cinereicollis* and then followed by *T. canipes* (which is allopatric with respect to the rest of the group). Critically, in the concatenated tree, where monophyly of species can be assessed, each of these species was monophyletic based on geographically dispersed sampling (Figure 1b). This is in stark contrast to the mtDNA gene tree (Figure 3). We report here analysis of 231 mitochondrial cytochrome b sequences from members of this group (including 43 sequences first published by Reid *et al.* (2012)): 8 *T. canipes* sequences



**Figure 3** The mtDNA gene tree for the *T. quadrivittatus* group species from the central and southern Rockies estimated from 231 individuals were collected largely from our own fieldwork. Sequences were trimmed and DT-ModSel (Minin *et al.*, 2003), which selects among models of nucleotide sequence evolution using a decision-theoretic approach, indicated the HKY +  $\Gamma$  model. Phylogenetic inference was obtained using MrBayes 3.1.2 (Ronquist and Huelsenbeck, 2003). Two independent runs of seven million generations, sampling every 500, were performed. Convergence was assessed through visual inspection of plots of log-likelihood scores vs generation, high effective sample sizes, a low (<0.01) s.d. of split frequencies among runs and a potential scale reduction factor near unity for all parameter estimates. A majority-rule consensus tree was generated from the posterior distribution of topologies after removing 25% of samples as a burn-in.

(5 novel, not previously published); 13 *T. rufus* (10 novel); 64 *T. umbrinus* (53 novel); 54 *T. dorsalis* (42 novel); 67 *T. quadrivittatus* (61 novel); and 25 *T. cinereicollis* sequences (17 novel). Collection localities and Genbank accession numbers are listed in Supplementary Material. The only species that are monophyletic with respect to their mtDNA gene tree are *T. canipes* and *T. rufus*, two species with allopatric distributions or that lack documented contact zones (Clades A and B: Figure 3). The other four taxa have partially overlapping

distributions (as well as documented contact zones) and are strongly polyphyletic with respect to the mtDNA gene tree. There is one haplogroup (Clade C in Figure 3) that is restricted to central Colorado and Wyoming. *T. dorsalis*, *T. quadrivittatus* and *T. umbrinus* variously overlap in that region, and this haplogroup is found in all three of these species; we cannot identify to which species this haplogroup is native, and it is possible that this haplogroup has been introgressed from an extinct taxon (that is, a ghost lineage).

**Table 2** Direct estimates of mtDNA introgression, Nm (95% CI), in the *T. quadrivittatus* group

Source species	Receiving species			
	<i>cinereicollis</i>	<i>dorsalis</i>	<i>quadrivittatus</i>	<i>umbrinus</i>
<i>cinereicollis</i>	—	1.768 (0.77–3.14)	$2.3 \times 10^{-9}$ (~0–0.38)	1.148 (0.55–2.05)
<i>dorsalis</i>	0.326 (0.05–1.01)	—	0.796 (0.25–1.96)	0.383 (0.10–0.98)
<i>quadrivittatus</i>	0.326 (0.05–1.01)	1.010 (0.31–2.35)	—	$2.55 \times 10^{-16}$ (~0–0.02)
<i>umbrinus</i>	1.304 (0.60–2.42)	2.020 (0.92–3.76)	1.393 (0.60–2.69)	—

Abbreviations: CI, confidence interval; mtDNA, mitochondrial DNA.

Throughout the rest of the gene tree, it is possible to identify haplogroups primarily affiliated with individual species, but each of these is also carried by individuals from other species (for example, Clade D; Figure 3). A remarkable example of this is *T. dorsalis*; wherever it comes into contact with one of the other species, individuals carry that species' mtDNA. Conversely, where *T. dorsalis* occurs in isolated populations (for example, southern Arizona sky islands), individuals carry unique, *T. dorsalis*-specific haplotypes (Figure 3). Thus, it appears that mtDNA introgression is widespread in the *T. quadrivittatus* group and coalescent simulations (Reid *et al.*, 2012) exclude incomplete lineage sorting as the source of incongruence between the species tree and the mtDNA gene tree.

A more direct comparison of introgression can be conducted by direct estimation of gene flow (that is, interspecific migration rates) for mtDNA using MIGRATE-N (Beerli, 2009). Initial, relatively short runs were conducted for all six species; however, both because of monophyly of and small samples for *T. canipes* and *T. rufus*, the likelihood surfaces for  $\theta$  and  $M$  were flat for these two species and they were excluded from the longer runs. Further, because Strasburg and Rieseberg (2010) have shown that ignoring unsampled phylogenetic structure does not compromise estimates of gene flow, we estimated migration for all pairwise comparisons of the four overlapping species. For each analysis we ran five Metropolis-coupled chains for 10 000 000 generations, after a burn-in of 1 000 000 generations.

The migration rates estimated from mtDNA ( $Nm = \theta \times M$ ) suggest substantial migration (that is, introgression) between *T. umbrinus* and *T. dorsalis* (Table 2). Similar high levels of interspecific mtDNA gene flow were obtained for analyses of other pairs of taxa in this group (Table 2). In fact, these analyses support the observational conclusion from the phylogeny that *T. dorsalis* has received introgressed mtDNA from three different species: *T. umbrinus*, *T. quadrivittatus* and *T. cinereicollis*. Similarly, *T. umbrinus* has apparently contributed its mtDNA to the other three species. Thus, it is very clear that there is extensive mtDNA introgression occurring in this group on a time scale that is faster than the mutation rate of mtDNA because identical tip haplotypes are shared between and among species.

### *T. minimus* introgressions

The least chipmunk (*T. minimus*) is the most widely distributed of the western chipmunks (Figure 2c), and occurs in the widest variety of habitats in North America (Verts and Carraway, 2001). To date, we have sequenced several hundred individuals (Demboski *et al.*, in prep), and it is clear that the species is not monophyletic with respect to its mtDNA. In addition to the possible presence of an unrecognized species (probably corresponding to the subspecies *T. m. girsescens*; Reid *et al.*, 2012), *T. panamintinus* (Panamint chipmunk), *T. speciosus* (lodgepole chipmunk) and *T. alpinus* (alpine chipmunk) samples are entirely composed of individuals whose mtDNA sequences are nested within those of *T. minimus* sequences (Reid *et al.*, 2012). The mtDNA

sequences for the Panamint and lodgepole chipmunks each form monophyletic groups, suggesting the possibility of fixation on a single, ancient introgression akin to the *T. a. canicaudus* scenario discussed above. Furthermore, Reid *et al.* (2012) conducted coalescent simulations and were able to reject phylogenetic uncertainty and incomplete lineage sorting (that is, mutational and coalescent stochasticity) as explanations, at least for the nesting of lodgepole and Panamint chipmunk sequences within *T. minimus*. Panamint and lodgepole chipmunks are each monophyletic with respect to their nuclear genes (Reid *et al.*, 2012), and they are sister taxa that are not particularly closely related to *T. minimus* in the species-tree estimates (Figure 1); rather, the *speciosus*–*panamintinus* clade is sister to a clade containing two geographically adjacent species, *T. obscurus* and *T. merriami*, which occur in southern California into Mexico (Reid *et al.*, 2012). Panamint chipmunks are primarily restricted to pinyon-juniper habitats in the southwestern Great Basin and contact *T. minimus* at the transitions between pinyon and sagebrush (Best *et al.*, 1994a). Lodgepole chipmunks typically occur (obviously) in lodgepole pine habitats at moderate to high elevations in western and south-central California (Best *et al.*, 1994b). *T. minimus* and *T. speciosus* come into contact at several places along the Eastern Sierras (Figure 2c), but no recent/current mtDNA introgression has been documented (JL Patton, personal communication).

Interestingly, individuals of the narrow endemic alpine chipmunk (*T. alpinus*) have one of a number of mtDNA haplotypes that are nested within those found in nearby populations of *T. minimus* (roughly corresponding to *T. m. scrutator*). It is also the case that *T. alpinus* nuclear sequences are nested within those of *T. minimus* (Figure 1b; Reid *et al.*, 2012). This suggests that *T. alpinus* is likely a very recent offshoot of *T. minimus* isolated in the upper elevations of the eastern Sierra Nevada. The two species have strongly diverged bacula, and we hypothesize that they actually provide an example of incomplete lineage sorting (rather than hybridization), a conclusion we are testing with genomic data.

### SUMMARY

Thus, the conclusion that has emerged from over a decade's worth of intensive field collecting, generation of mtDNA sequences and a small set of nuclear loci (sequences and microsatellites) is that ecological, morphological and behavioral differentiation have in many instances outpaced the evolution of complete reproductive isolation in the western North American chipmunks. Therefore, DGF has played a role in this radiation, and we can putatively allocate different introgression events to various stages along the continuum of speciation.

The introgression between *T. r. ruficaudus* and *T. r. simulans* fits the expectations of early speciation. This applies to both the older Lochsa Zone (Good and Sullivan, 2001; Hird and Sullivan, 2009), as well as the more recent Whitefish Zone (Hird *et al.*, 2010), where gene flow is



occurring at both mtDNA and microsatellite loci. Genome-wide data will permit more accurate estimates of gene flow and timing of divergence.

In intermediate stages of speciation, more of the genome may be resistant to introgression, but there still may be substantial introgression. The extensive mtDNA introgressions we have identified between (and among) the predominantly parapatric members of the *T. quadrivittatus* group (*T. umbrinus*, *T. dorsalis*, *T. quadrivittatus* and *T. cinereicollis*) in the central/southern Rockies and Great Basin (Figure 3, Table 2) fit the expectations for intermediate stages. To date, we only have data from four nuclear loci from which to make inferences regarding gene flow among these taxa, and likelihood surfaces are too flat to make direct inferences of gene flow from these four loci (results not shown). If genome-wide data fit the predictions of DGF, this group may provide an important and rarely examined stage in the speciation process, where ecological and morphological differentiation have been solidly (and perhaps irreversibly) established, but where neutral loci may be subject to moderate gene flow. This may be particularly important because the species-tree estimate produced by Reid *et al.* (2012), especially the \*BEAST tree and the concatenated tree shown in Figure 1, provides a temporal scale to testing the predictions within the group.

Later in divergence, blocks of the genome that are resistant to introgression may have grown, such that any hybridization results only in very small amounts of introgression. This therefore may be a difficult phase to identify, but it appears that the northern Rockies introgression between *T. r. ruficaudus* and *T. a. luteiventris* exhibits this pattern. There is restricted introgression of mtDNA along the spine of the northern Rockies along the BC/Alberta border (Good *et al.*, 2003), no detectable introgression at the nuclear locus *acrosin* and a mere suggestion of a late generation backcross at microsatellite loci (Reid *et al.*, 2010). Again, detection of divergence at this stage may require data of the scale only possible via genomic approaches.

The final stage of DGF, where reproductive isolation is complete and there are no genomic regions introgressing, is common and easy enough to identify. Perhaps the most interesting cases are those that exhibit evidence of ancient post-divergence introgression between taxa that currently are reproductively isolated. The best-documented example of this in the *Tamias* radiation involves fixation on an ancient mtDNA introgression in *T. a. canicaudus* (the Palouse Introgression; Good *et al.*, 2003, 2008). Here, *T. a. canicaudus* is fixed for a haplogroup that is sister to haplotypes found in *T. r. simulans*, whereas the microsatellite data and nuclear sequences indicate that there is no current gene flow between sympatric populations and that there is little chance that anomalous lineage sorting can explain the pattern (Good *et al.*, 2008). Other possible examples are the apparent fixations on introgressed *T. minimus* mtDNA in *T. panamintinus* and *T. speciosus* (Table 2; Reid *et al.*, 2012), although we currently lack extensive nuclear data to test these hypotheses further.

One of the more intriguing aspects of DGF in *Tamias* is the mosaic nature of some widespread taxa with respect to completion of reproductive isolation. *T. a. canicaudus* and *T. r. simulans* appear to have evolved complete reproductive isolation (Good *et al.*, 2003, 2008), but *T. a. luteiventris* and *T. r. ruficaudus* appear to have experienced a recent introgression event and may be currently exchanging genes at a very low rate (Good *et al.*, 2003; Reid *et al.*, 2010). Although speculative, this contrast could be related to the length of time that each pair has been in contact with each other. In the case of *T. a. canicaudus* and *T. r. simulans*, conditions of intermittent parapatry have probably recurred throughout much of

the Pleistocene. Good *et al.* (2008) estimated a mid-to-late Pleistocene date for the Palouse Introgression event and the two taxa partition habitats across a broad range of sympatry. In this case, therefore, the evolution of reproductive character displacement (or specifically reinforcement if there is selection against hybrids) has perhaps had sufficient time to effect the completion of reproductive isolation. Conversely, in the Northern Rockies Introgression, forest habitat for any species of chipmunk has only been established for ~3000 years (after glacial retreat) and *T. a. luteiventris* and *T. r. ruficaudus* have probably not experienced a long history of parapatry; it is therefore possible that selection has had insufficient time to influence reproductive isolation between this pair of taxa. This mosaic nature of reproductive isolation is perhaps further enabled because each of the two species involved, *T. amoenus* and *T. ruficaudus*, exhibit populations that are highly structured across geography (Demboski and Sullivan, 2003; Good and Sullivan, 2001, respectively).

DGF also appears to be operating in other mammalian radiations. For example, the genus *Lepus* (hares) has been documented to exhibit similar introgressions to those described in *Tamias*. In particular, Melo-Ferreira *et al.* (2012) have demonstrated introgression between non-sister pairs of species, including species-wide fixation on introgressed mtDNA (for example, in *L. castroviejoi* and *L. corsicanus*). Thus, DGF may prove to be relatively more common during mammalian speciation than is often thought and additional examples will almost certainly be discovered. However, it is important to note that most evidence for introgression in mammals comes from the study of mtDNA and perhaps a small number of other genetic markers. The nonrecombinant maternal inheritance and rapid evolution of mtDNA make it a powerful population genetic marker (for example, Zink and Barrowclough, 2008), but mtDNA is also highly prone to asymmetric and extensive introgression (for example, Petit and Excoffier, 2009; Toews and Brelsford, 2012). As even rare hybridization events can yield extensive mtDNA gene flow (Currat *et al.*, 2008), it is likely that mtDNA provides a highly biased view of overall genetic contribution of introgressive hybridization. Thus, an important question going forward is to determine both the frequency and overall genetic contribution of introgressive hybridization in chipmunks and other mammals.

## FUTURE DIRECTIONS

In addition to testing the hypotheses discussed above, a number of remaining questions arise. First, these hypotheses rest on phylogenies (Figure 1) estimated from reproductive protein coding genes (Reid *et al.*, 2012). As these are based on just four loci, additional phylogenomic data and additional sampling of species are required to provide a better topological and temporal framework for testing DGF in chipmunks. Further, a better understanding of species population history and contact zones is also critical in moving forward. Second, what is the role of sexual selection (for example, female choice), and perhaps genital evolution and sperm competition in governing chipmunk speciation (Hosken and Stockley, 2004; Ramm, 2007)? Third, what genes or genomic regions are prone to introgression versus resistant to gene flow? Finally, what is the role of genomic islands of divergence and what are the dynamics of selection and linkage in shaping the genomic structure of introgression (for example, Noor and Bennett, 2009; Nosil and Feder, 2012)? Most of these issues will require some form of comparative genomic data to be addressed. Powerful next-generation sequencing techniques now enable the collection of large-scale genomic data in non-model species (Good, 2011), including the recent development of large-scale targeted resequencing tools for chipmunks (Bi *et al.*, 2012, 2013).



With these resources in hand, we anticipate that the next decade of research should resolve many of these questions.

## DATA ARCHIVING

GenBank accession numbers are given for each individual in Supplementary Table S1 of the Supplementary material. Nexus files available from the Dryad Digital Repository: doi:10.5061/dryad.52mp1.

## CONFLICT OF INTEREST

The authors declare no conflict of interest.

## ACKNOWLEDGEMENTS

We thank the following for assistance in the field over several years: W Bell, I Demboski, M Fraker, D Good, P Good, J Good, J Harper, A Hornsby, S Poler, A Runck, D Sullivan and the 1999-03 University of Idaho Mammalogy classes. We thank various museums and individuals for loans of tissue samples, including the Denver Museum of Nature & Science, Museum of Southwestern Biology (J Cook), Humboldt State University Vertebrate Museum, University of Alaska Museum (L Olson), Burke Museum (J Bradley), Museum of Vertebrate Zoology (J Patton) and D Burkett. Peter Beerli and two anonymous reviewers have provided advice and comments that improved the paper greatly. This research was conducted in compliance with University of Idaho Animal Care and Use Committee under protocol UIACUC-2005-40 and was supported by a seed grant from the University of Idaho Research Foundation, the NSF EPSCoR program (NSF cooperative agreement number EPS-9720634), the Institute for Bioinformatics and Evolutionary Studies (IBEST) at the University of Idaho (by NIH NCRR 1P20RR016454-01; NIH NCRR 1P20RR016448-01; NSF EPS-809935), NSF DEB-0717426, NSF DEB-0716200, NSF Cooperative Agreement No. DBI-0939454 and the Denver Museum of Nature & Science. JS and BS received funding through BEACON, an NSF-funded Center for the Study of Evolution in Action (DBI-0939454). Any opinions, findings and conclusions or recommendations expressed in this material are those of the author(s) and do not necessarily reflect the views of the National Science Foundation.

Baker RJ, Bradley LC, Dragoo JW, Engstrom MD, Hoffman RS, Jones CA *et al.* (2003). Revised checklist of North American Mammals North of Mexico. *Occas Pap Mus Texas Tech Univ* **229**: 1–24.

Beerli P (2009). How to use MIGRATE, or why are Markov chain Monte Carlo programs difficult to use? In: Bertoele G, Bruford MW, Hauffe HC, Rizzoli A, Versesi C (eds). *Population Genetics for Animal Conservation, vol. 17 of Conservation Biology*. Cambridge University Press: Cambridge, UK, pp 42–79.

Bergeron P, Montiglio P-O, Réale D, Humphries MM, Garant D (2012). Bateman gradients in a promiscuous mating system. *Behav Ecol Sociobiol* **66**: 1125–1130.

Bergstrom BJ, Hoffmann RS (1991). Distribution and diagnosis of three species of chipmunks (*Tamias*) in the Front Range of Colorado. *Southwest Nat* **36**: 14–28.

Bergstrom BJ (1992). Parapatry and competition between chipmunk (*Tamias*) species and the hypothesized role of parasitism. *Am Midl Nat* **128**: 168–179.

Best TL (1993). *Tamias ruficaudus*. *Mamm Species* **452**: 1–7.

Best TL, Granai NJ (1994a). *Tamias obscurus*. *Mamm Species* **472**: 1–6.

Best TL, Granai NJ (1994b). *Tamias merriami*. *Mamm Species* **476**: 1–9.

Best TL, Clawson RG, Clawson JA (1994a). *Tamias panamintinus*. *Mamm Species* **468**: 1–7.

Best TL, Clawson RG, Clawson JA (1994b). *Tamias speciosus*. *Mamm Species* **478**: 1–9.

Bi K, Linderoth T, Vanderpool D, Good JM, Nielsen R, Moritz C (2013). Unlocking the vault: next-generation museum population genomics. *Mol Ecol* **22**: 6018–6032.

Bi K, Vanderpool D, Singhal S, Linderoth T, Moritz C, Good JM (2012). Transcriptome-based exon capture enables highly cost-effective comparative genomic data collection at moderate evolutionary scales. *BMC Genomics* **13**: 403–403.

Blankenship DJ (1985). Reproductive isolating mechanisms of southern California chipmunks: a systematic evaluation of *Tamias obscurus* Allen, 1890 and *T. merriami* Allen, 1890 (Rodentia: Sciuridae). PhD dissert, Loma Linda University, Loma Linda, CA, USA, pp 137.

Brown JH (1971). Mechanisms of competitive exclusion between two species of chipmunks. *Ecology* **52**: 305–311.

Callahan JR (1977). Diagnosis of *Eutamias obscurus* (Rodentia: Sciuridae). *J Mammal* **58**: 188–201.

Callahan JR (1981). Vocal solicitation and parental investment in female *Eutamias*. *Am Nat* **118**: 872–875.

Chappell MA (1978). Behavioral factors in the altitudinal zonation of chipmunks (*Eutamias*). *Ecology* **59**: 565–579.

Compton SB, Callahan JR (1995). Reproductive behavior in Merriam's chipmunk (*Tamias merriami*). *Great Basin Nat* **55**: 89–91.

Currat M, Ruedi M, Petit RJ, Excoffier L (2008). The hidden side of invasions: massive introgression by local genes. *Evolution* **62**: 1908–1920.

Dalquest WW, Baskin JA, Schultz GE (1996). Fossil mammals from a late Miocene (Clarendonian) site in Beaver County, Oklahoma. In: Genoways HH, Baker RJ (eds). *Contribution in Mammalogy. A Memorial Volume Honoring Dr. J. Konx Jones, Jr.* Museum of Texas Tech University: Lubbock, TX, USA, pp 107–137.

Daubenmire R (1975). *Floristic Plant Geography of Eastern Washington and Northern Idaho*. Brigham Young University Press: Provo, UT, USA.

Demboski JR, Sullivan J (2003). Extensive mtDNA variation within the yellow-pine chipmunk, *Tamias amoenus* (Rodentia: Sciuridae), and phylogeographic inferences for northwest North America. *Mol Phylogenet Evol* **26**: 389–408.

Drummond AJ, Suchard MA, Xie D, Rambaut A (2012). Bayesian phylogenetic with BEAUTI and the BEAST 1.7. *Mol Biol Evol* **29**: 1969–1973.

Ellis LS, Maxson LR (1979). Evolution of the chipmunk genera *Eutamias* and *Tamias*. *J Mammal* **60**: 331–334.

Fitzpatrick BM, Turelli M (2006). The geography of mammalian speciation: mixed signals from phylogenies and range maps. *Evolution* **60**: 601–615.

Feder JL, Nosil P (2010). The efficacy of divergence hitchhiking in generating genomic islands during ecological speciation. *Evolution* **64**: 1729–1747.

Gambs RD (1965). Zoogeography of Chipmunks in the Pacific Northwest. MS Thesis, University of Idaho, Moscow, ID, USA, p 109.

Gannon WL, Lawlor TE (1989). Variation of the chip vocalization of three species of Townsend chipmunks (genus *Eutamias*). *J Mammal* **70**: 740–753.

Good J (2011). Reduced representation methods for subgenomic enrichment and next-generation sequencing. In: Orgogozo V, Rockman MV (eds). *Methods in Molecular Biology*, vol. 772. Humana Press: New York, NY, USA, pp 85–103.

Good JM, Sullivan J (2001). Phylogeography of red-tailed chipmunks (*Tamias ruficaudus*), a northern Rocky Mountains endemic. *Mol Ecol* **10**: 2683–2696.

Good JM, Demboski JR, Nagorsen DM, Sullivan J (2003). Phylogeography and introgressive hybridization: chipmunks (*Tamias*) in the northern Rocky Mountains. *Evolution* **57**: 1900–1916.

Good J, Hird S, Reid N, Demboski J, Stepan SJ, Sullivan J. (2008). Ancient introgression and mtDNA capture in non-sister species of chipmunks (*Tamias*). *Mol Ecol* **17**: 1313–1327.

Grinnell J, Storer TI (1924). *Animal Life in the Yosemite*. University of California Press: Berkeley, CA, USA.

Hall ER (1981). *The Mammals of North America*, 2nd edn. John Wiley & Sons, Inc.: New York, NY, USA.

Heled J, Drummond AJ (2010). Bayesian inference of species trees from multilocus data. *Mol Biol Evol* **27**: 570–580.

Heller HC (1970). Altitudinal zonation of chipmunks (*Eutamias*): interspecific aggression, water balance, and energy budgets. PhD Thesis, Yale University, New Haven, CT, USA.

Heller HC (1971). Altitudinal zonation of chipmunks (*Eutamias*): interspecific aggression. *Ecology* **52**: 312–319.

Heller HC, Gates DM (1971). Altitudinal zonation of chipmunks (*Eutamias*): energy budgets. *Ecology* **52**: 424–433.

Hird S, Sullivan J (2009). Assessment of gene flow across a hybrid zone in red-tailed chipmunks (*Tamias ruficaudus*). *Mol Ecol* **18**: 3097–3109.

Hird S, Reid N, Demboski JR, Sullivan J (2010). Introgression at differentially aged hybrid zones in red-tailed chipmunks. *Genetica* **138**: 869–883.

Hosken DJ, Stockley P (2004). Sexual selection and genital evolution. *Trends Ecol Evol* **19**: 87–93.

Howell AH (1929). Revision of the American chipmunks (genera *Tamias* and *Eutamias*). *North Am. Fauna* **52**: 1–157.

Jameson EW (1999). Host-ectoparasite relationships among North American chipmunks. *Acta Theriol* **44**: 225–231.

Jiggins CD (2008). Sympatric speciation: why the controversy? *Curr Biol* **16**: R333–R334.

Johnson DH (1943). Systematic review of the chipmunks (genus *Eutamias*) of California. *Univ Calif Publ Zool* **48**: 63–148.

Lanfear R, Calcott B, Ho SWY, Guindon S (2012). PartitionFinder: combined selection of partitioning schemes and substitution models for phylogenetic analyses. *Mol Biol Evol* **29**: 1695–1701.

Levenson H, Hoffmann RS, Nadler CF, Deutsch L, Freeman SD. (1985). Systematics of the Holarctic chipmunks (*Tamias*). *J Mammal* **66**: 219–242.

Lomolino MV, Riddle BR, Brown JH (2006). *Biogeography*, 3rd edn Sinauer Associates-Sunderland, MA, USA, p 752.

Mack RN, Rutter NM, Bryant VM Jr, Valastro S (1978). Reexamination of postglacial vegetation history in northern Idaho: Hager Pond, Bonner Co. *Quat Res* **10**: 241–255.

Melo-Ferreira J, Boursot P, Carneiro M, Esteves PJ, Farello L, Alves PJ (2012). Recurrent introgression of mitochondrial DNA among hares (*Lepus* spp.) revealed by species-tree inference and coalescent simulations. *Syst Biol* **61**: 367–381.

Merriam CH (1897). Notes on the chipmunks of the genus *Eutamias* occurring west of the east base of the Cascade-Sierra system, with descriptions of new forms. *Proc Biol Soc Wash* **11**: 189–212.

Minin V, Abdo Z, Joyce P, Sullivan J (2003). Performance-based selection of likelihood models for phylogeny estimation. *Syst Biol* **52**: 674–683.

Noor MAF, Bennett SA (2009). Island of speciation or mirages in the desert? Examining the role of reduced recombination in maintaining species. *Heredity* **103**: 439–444.

- Nosil P, Feder JL (2012). Genomic divergence during speciation: causes and consequences. *Philos Trans R Soc Lond B Biol Sci* **367**: 332–342.
- Patterson BD, Heaney LR (1987). Preliminary analysis of geographic variation in red-tailed chipmunks (*Eutamias ruficaudus*). *J Mammal* **68**: 782–791.
- Patterson BD, Thaeler CS (1982). The mammalian baculum: hypotheses on the nature of bacular variability. *J Mammal* **63**: 1–15.
- Pecoud J, Ollivier A, Plantegenest M, Simon J-C (2009). A continuum of genetic divergence from sympatric host races to species in the pea aphid complex. *Proc Natl Acad Sci USA* **106**: 7495–7500.
- Petit RJ, Excoffier L (2009). Gene flow and species delimitation. *Trends Ecol Evol* **24**: 386–393.
- Piaggio AJ, Spicer GS (2000). Molecular phylogeny of the chipmunk genus *Tamias* based on the mitochondrial cytochrome oxidase subunit II gene. *J Mammal Evol* **7**: 147–166.
- Piaggio AJ, Spicer GS (2001). Molecular phylogeny of the chipmunks inferred from mitochondrial cytochrome b and cytochrome oxidase II gene sequences. *Mol Phylogenet Evol* **20**: 335–350.
- Pinho C, Hey J (2010). Divergence with gene flow: models and data. *Annu Rev Ecol Evol Syst* **41**: 215–230.
- Ramm SA (2007). Sexual selection and genital evolution in mammals: a phylogenetic analysis of baculum length. *Am Nat* **169**: 360–369.
- Reid N, Hird S, Schulte-Hostedde A, Sullivan J (2010). Examination of nuclear loci across a zone of mitochondrial introgression between *Tamias ruficaudus* and *T. amoenus*. *J Mammal* **91**: 1389–1400.
- Reid N, Demboski JR, Sullivan J (2012). Phylogeny estimation of the radiation western American chipmunk (*Tamias*) in the face of introgression using reproductive protein genes. *Syst Biol* **61**: 44–62.
- Rice WR, Hostert EE (1993). Laboratory studies on speciation: what have we learned in 40 years. *Evolution* **47**: 1637–1653.
- Ronquist F, Huelsenbeck JP (2003). MrBayes 3: Bayesian phylogenetic inference under mixed models. *Bioinformatics* **19**: 1572–1574.
- Schulte-Hostedde AI, Millar JS (2004). Intraspecific variation of testis size and sperm length in the yellow-pine chipmunk (*Tamias amoenus*): implications for sperm competition and reproductive success. *Behav Ecol Sociobiol* **55**: 272–277.
- Schulte-Hostedde AI, Millar JS, Gibbs HL (2004). Sexual selection and mating patterns in a mammal with female-biased sexual size dimorphism. *Behav Ecol* **15**: 351–356.
- Smadja CM, Butlin RK (2010). A framework for comparing processes of speciation in the presence of gene flow. *Mol Ecol* **20**: 5123–5140.
- Strasburg JL, Rieseberg LH (2010). How robust are “isolation with migration” analyses to violations of the IM model? A simulation study. *Mol Biol Evol* **27**: 297–310.
- Sullivan RM, Petersen KE (1988). Systematics of southwestern populations of least chipmunks (*Tamias minimus*) reexamined: a synthetic approach. *Occ Pap Mus Southwestern Biol* **5**: 1–27.
- Sutton DA (1992). *Tamias amoenus*. *Mamm Species* **390**: 1–8.
- Sutton DA, Patterson BD (2000). Geographic variation of the western chipmunks *Tamias senex* and *T. siskiyou*, with two new subspecies from California. *J Mammal* **81**: 316.
- Taylor EB, Boughman JW, Groenenboom M, Sniatynski M, Schluter D, Gow JL (2006). Speciation in reverse: morphological and genetic evidence of the collapse of a three-spined stickleback (*Gasterosteus aculeatus*) species pair. *Mol Ecol* **15**: 343–355.
- Toews DPL, Brelsford A (2012). The biogeography of mitochondrial and nuclear discordance in animals. *Mol Ecol* **21**: 3907–3930.
- Verts BJ, Carraway LN (2001). *Tamias minimus*. *Mamm Species* **653**: 1–10.
- White JA (1953). The baculum in the chipmunks of western North America. *Univ Kansas Pub Mus Nat Hist* **5**: 611–631.
- Wu CI (2001). The genic view of the process of speciation. *J Evol Biol* **14**: 851–865.
- Zink RMR, Barrowclough GFG (2008). Mitochondrial DNA under siege in avian phylogeography. *Mol Ecol* **17**: 2107–2121.
- Zitari A, Scopece G, Helal AN, Widmer A, Cozzolino S (2012). Is floral divergence sufficient to maintain species boundaries upon secondary contact in Mediterranean food-deceptive orchids? *Heredity* **108**: 219–228.

Supplementary Information accompanies this paper on Heredity website (<http://www.nature.com/hdy>)