

Published in final edited form as:

Nature. 2015 October 8; 526(7572): 207–211. doi:10.1038/nature15535.

The effect of malaria control on *Plasmodium falciparum* in Africa between 2000 and 2015

S. Bhatt^{#,1}, D.J. Weiss^{#1}, E. Cameron^{#1}, D. Bisanzio¹, B. Mappin¹, U. Dalrymple¹, K. Battle¹, C.L. Moyes¹, A. Henry¹, P.A. Eckhoff², E.A. Wenger², O. Briët^{3,4}, M.A. Penny^{3,4}, T.A. Smith^{3,4}, A. Bennett⁵, J. Yukich⁶, T.P. Eisele⁶, J.T. Griffin⁷, C.A. Fergus⁸, M. Lynch⁸, F. Lindgren⁹, J.M. Cohen¹⁰, C.L.J. Murray¹¹, D.L. Smith^{1,11,12,13}, S.I. Hay^{11,13,14}, R.E. Cibulskis⁸, and P.W. Gething^{§,1}

¹Spatial Ecology and Epidemiology Group, Tinbergen Building, Department of Zoology, University of Oxford, South Parks Road, Oxford, OX1 3PS, UK ²Institute for Disease Modeling, Intellectual Ventures, 1555 132nd Ave NE, Bellevue, WA 98005, USA ³Epidemiology and Public Health, Swiss Tropical and Public Health Institute, P.O. BOX 4002, Basel, Switzerland ⁴University of Basel, Petersplatz 1, P.O. BOX 4001, Basel, Switzerland ⁵Malaria Elimination Initiative, University of California San Francisco, 500 Parnassus Ave, San Francisco, CA 94143, San Francisco, USA ⁶Center for Applied Malaria Research and Evaluation, Tulane University School of Public Health and Tropical Medicine, 1440 Canal Street, Suite 2200 New Orleans, LA 70112, USA ⁷MRC Centre for Outbreak Analysis and Modelling, Department of Infectious Disease Epidemiology, Imperial College London, London, W2 1PG, UK ⁸Global Malaria Programme, World Health Organization, 20 Avenue Appia, 1211 Geneva 27, Switzerland ⁹Department of Mathematical Sciences, University of Bath, Claverton Down, Bath, BA2 7AY, UK ¹⁰Clinton Health Access Initiative, Boston, MA, USA ¹¹Institute for Health Metrics and Evaluation, 2301 Fifth Ave., Suite 600, Seattle, WA 98121, USA ¹²Sanaria Institute for Global Health and Tropical Medicine, Rockville, MD 20850, USA ¹³Fogarty International Center, National Institutes of Health, Bethesda, Maryland 20892-2220, USA ¹⁴Wellcome Trust Centre for Human Genetics, University of Oxford, Oxford, OX3 7BN, UK

These authors contributed equally to this work.

Abstract

Since the year 2000, a concerted campaign against malaria has led to unprecedented levels of intervention coverage across sub-Saharan Africa. Understanding the effect of this control effort is vital to inform future control planning. However, the effect of malaria interventions across the varied epidemiological settings of Africa remains poorly understood owing to the absence of

Users may view, print, copy, and download text and data-mine the content in such documents, for the purposes of academic research, subject always to the full Conditions of use:http://www.nature.com/authors/editorial_policies/license.html#terms

§corresponding author: Correspondence and requests for materials should be addressed to PWG (peter.getting@zoo.ox.ac.uk).

Author Contributions Conceived of and designed the research: PWG and SB. Drafted the manuscript: PWG and SB. Drafted the supplementary information: SB, DJW, EC, DB, UD, BM. Prepared data: SB, DJW, BM, UD, KB, CLM, AH, AB, JY, TPE. Conducted the analyses: SB, DJW, EC, DB, CAF, ML, REC. Supported the analyses: PAE, EAW, OB, MAP, TAS, JTG, CAF, ML, FL, DLS. Supported interpretation and policy contextualization: SB, AB, TPE, JY, CAF, ML, JMC, CLJM, DLS, SIH, REC, PWG. All authors discussed the results and contributed to the revision of the final manuscript.

Supplementary Information is linked to the online version of the paper at www.nature.com/nature.

reliable surveillance data and the simplistic approaches underlying current disease estimates. Here we link a large database of malaria field surveys with detailed reconstructions of changing intervention coverage to directly evaluate trends from 2000 to 2015 and quantify the attributable effect of malaria disease control efforts. We found that *Plasmodium falciparum* infection prevalence in endemic Africa halved and the incidence of clinical disease fell by 40% between 2000 and 2015. We estimate that interventions have averted 663 (542–753 credible interval) million clinical cases since 2000. Insecticide-treated nets, the most widespread intervention, were by far the largest contributor (68% of cases averted). Although still below target levels, current malaria interventions have substantially reduced malaria disease incidence across the continent. Increasing access to these interventions, and maintaining their effectiveness in the face of insecticide and drug resistance, should form a cornerstone of post-2015 control strategies.

In the midst of an escalating malaria public health disaster, the year 2000 marked a turning point in multilateral commitment to malaria control in sub-Saharan Africa, catalysed by the Roll Back Malaria initiative and the wider development agenda around the United Nations Millennium Development Goals (MDGs). The 15 years since have seen international financing for malaria control increase approximately twentyfold¹, enabling widespread but uneven scale-up of coverage of the main contemporary malaria control interventions: insecticide-treated bednets (ITNs), indoor residual spraying (IRS), and prompt treatment of clinical malaria cases with artemisinin-based combination therapy (ACT).

As part of this reinvigorated effort, a series of international goals were set with a target year of 2015, in particular the MDG to “halt by 2015 and begin to reverse the incidence of malaria” and the more ambitious target defined later by the World Health Organization (WHO) of reducing case incidence by 75% relative to 2000 levels². While these targets were important for motivating action and mobilising funds, no explicit plan was put in place to reliably measure progress towards them. Now that the benchmark year of 2015 has been reached, the international community must define a post-2015 agenda for malaria control that will shape the technical, financial, and political landscape in which the battle against the disease will be fought. This agenda is being defined around two key policy initiatives for the 2016-2030 period: the Global Technical Strategy³ and Action and Investment to Defeat Malaria⁴, led by WHO and the Roll Back Malaria Partnership. In this context, it is imperative that the achievements of 2015 can be robustly evaluated and, more broadly, that the patterns, causes, and implications of changing malaria endemicity over the past 15 years can be understood to inform an optimal strategy for the future.

The effect of malaria control is poorly understood

Despite its importance, current knowledge on the nature and drivers of changing endemicity in sub-Saharan Africa is remarkably weak. National health records in 32 highly endemic countries (together accounting for about 90% of the global malaria burden) are considered inadequate to assess trends in malaria cases¹. This stems from low care-seeking rates (many malaria cases are not seen at formal health facilities), incomplete record keeping and curation (many recorded cases are never captured in surveillance databases), and historically poor access to parasitological diagnosis (malaria cases were often diagnosed presumptively

with poor specificity). As systems have begun to improve, for example owing to greater use of rapid diagnostic testing in health facilities¹, these biases have been mitigated, but that presents further challenges for comparison of data through time and evaluation of trends⁵. For these countries, the WHO has previously adopted a “cartographic” burden measurement approach whereby a map of climatic suitability for malaria transmission is first used to stratify likely incidence rates across the continent, with these rates then progressively downgraded as intervention coverage increases according to effect sizes measured in randomized control trials. One acknowledged limitation of this approach is its reliance on the central assumption that effects observed in a limited number of short-term trials can be extrapolated to sustained continent-wide implementation. This assumption has never been validated beyond local or national-level analyses⁶. In reality, the individual or combined efficacy of interventions will vary by setting and be contingent on many local factors including vector ecology, health systems, and coverage levels^{7,8}. Other studies have investigated effects using cross-sectional community surveys^{7,9}. These studies capture a wider range of real-world settings, but yield only a single pooled estimate across diverse disease transmission settings that, again, has unknown validity when extrapolated across Africa.

Since its first use, component parts of the cartographic burden framework have incrementally improved. Climatic suitability maps have been superseded by empirical endemicity maps¹⁰⁻¹² that use model-based geostatistics to create surfaces of risk based on thousands of geolocated cross-sectional surveys measuring infection prevalence (termed *Plasmodium falciparum* parasite rate, *PPR*). Improvements have also been made in the estimation of clinical incidence rates as a function of *PPR*¹³⁻¹⁵, allowing clinical incidence rates, which are notoriously difficult to measure in the field, to be estimated geographically using mapped surfaces of *PPR*^{14,16}. All these earlier studies, however, preceded the most intense period of control effort (from 2010 to the present), and none were designed to formally evaluate temporal changes in disease burden or explicitly consider the effect of interventions.

A framework to measure malaria risk in Africa

Here, we provide the first formal quantification, with rigorously defined uncertainty, of *P. falciparum* infection prevalence and disease incidence across sub-Saharan Africa from the year 2000 to the benchmark year of 2015, and of the role the major control interventions have had in causing these changes. Our approach evaluates not only point estimates, but also presents a full treatment of uncertainty through a Bayesian hierarchical model. Components contributing to uncertainty in outputs included the sample size and spatiotemporal density of *PPR* surveys, uncertainty in the fitted relationships between *PPR* and the suite of environmental and intervention covariates, uncertainty in the input data on observed clinical incidence rates, and uncertainty in the mechanistic model parameters defining the prevalence-incidence relationship. By linking all components together in a Bayesian framework, these distinct sources of uncertainty are formally propagated through the predictive model and represented as predictive posterior distributions around all output results.

The analytical framework is shown schematically in Extended Data Fig. 1. Data on ITN use and access to ACTs from over one million households were combined with national malaria control programme data¹ on ITN, ACT, and IRS provision to develop time-series models of coverage of these interventions within each country¹. These were combined within a spatiotemporal Bayesian geostatistical model¹⁷ with *PfPR* data from 27,573 georeferenced population clusters between 1995 and 2014, along with an optimised suite of temporally dynamic environmental and sociodemographic covariates¹⁸. The model adjusted *PfPR* observations by age¹⁹, season, and type of diagnostic used, and fitted flexible functional forms to capture the effect of each intervention on declining *PfPR* as a function of coverage reached and the starting (pre-intervention) *PfPR* in 2000 (Extended Data Fig. 2). Following earlier work^{10,11,19} we chose to model *PfPR* in the 2-up-to-10 year age range, since this is associated with a plateau in the age-prevalence relationship and thus acts as a standardised comparison. The model was used to predict a spatio-temporal “cube” of age-structured *PfPR* at 5×5 km resolution across all endemic African countries for each year from 2000 to 2015. Using the empirically observed effect of each intervention, it was possible to generate counterfactual maps estimating contemporary *PfPR* under hypothetical scenarios without interventions. We chose to evaluate this ‘no intervention’ counterfactual to allow estimation of the total effect of interventions.

For the 32 high-burden countries of Africa, an ensemble model was developed to predict incidence rates of clinical malaria as a function of community *PfPR*²⁰. This brought together three independently developed mathematical malaria transmission models^{14,15,21} that were re-fitted to a common data set of age-structured clinical incidence measured longitudinally at 30 sites²², allowing an ensemble model to be defined to predict age-specific incidence at all locations given prevalence, seasonality, level of treatment, and probable immune status of populations. We used a definition of ‘clinical malaria’ as an attributable febrile episode (body temperature in excess of 37.5 C), censored by a 30-day window (that is, multiple bouts of symptoms occurring within the same 30-day period are counted as a single episode). The ensemble model was then combined with the *PfPR* cube and underlying population surfaces²³ to predict clinical incidence by country and year for both the real and counterfactual scenarios. For the remaining eleven low-burden countries in Africa (accounting for around 3% of cases) where national reporting systems are more robust, we generated clinical incidence estimates with an existing approach that uses national case reports while adjusting for care-seeking behaviour, low diagnostic testing rates, and underreporting^{1,24}.

Infection prevalence and clinical incidence decline

We found that infection prevalence in children age 2-up-to-10 across endemic Africa has halved since the year 2000 (population-weighted mean *PfPR*₂₋₁₀: year 2000 = 33%, 95% credible interval 31–35%; year 2015 = 16%, 14–19%), with around three-quarters of this decline occurring after 2005. Across Africa the rate of decline in *PfPR*₂₋₁₀ rose steadily to a peak yearly decline of 9% in 2011, after which there was a slowing between 2011 and 2013 followed by resurgence in recent years back to the current rate of 5% annual decline in *PfPR*. Our predicted surfaces of *PfPR*₂₋₁₀ demonstrate the geographical pattern of this reduction across the continent (Fig. 1a–c), with hyper- or holo-endemic transmission (where

PfPR exceeds 50% and 75%, respectively, see Fig. 1d) common in 2000 across large swathes of central and western Africa, but limited to isolated pockets by 2015. This decline meant a marked shift in the distribution of exposure level (Fig. 1d), with the proportion of the endemic population exposed to hyper- or holo-endemic malaria falling from 33% (30-37%) to just 9% (5-13%) (Table 1). Crucially, for the feasibility of post-2015 elimination efforts, the population of stable endemic Africa experiencing very low transmission (*PfPR*₂₋₁₀ less than 1%) has increased six-fold since 2000 (far outpacing the 50% underlying population growth over the period) meaning there are now 121 (110-133) million people living in settings where elimination campaigns can be considered.

We estimated that there were 187 (132–259) million clinical cases of *P. falciparum* malaria in Africa in 2015. Case incidence declined by 40% from 321 (253–427) per 1000 persons per annum in 2000 to 192 (135–265) per 1000 persons p.a. in 2015, with all but one of the 43 mainland endemic countries meeting the MDG target of reversing incidence trends by 2015, 19 (17-25) achieving a >50% decline, and 7 (6-7) declining by > 75% (Extended Data Fig. 3).

The model has been able to predict changes in mean *PfPR* across Africa with considerable precision, reflecting the increasing abundance of *PfPR* surveys, their relatively large signal-to-noise ratio, the adjustments for diagnostic type, and the informative covariate suite, all of which contributed to strong predictive performance of the geostatistical model. Credible intervals around the continental clinical incidence estimates were proportionately much larger and this reflected primarily the residual uncertainty around the modelled relationship between infection prevalence and clinical incidence.

Attributable effect of malaria control interventions

Changes in prevalence largely followed patterns of increasing ITN coverage, and ITNs were by far the most important intervention across Africa, accounting for an estimated 68 (62-72)% of the declines in *PfPR* seen by 2015 (Fig. 2a). We estimated ACT and IRS contributed 19 (15-24)% and 13 (11-16)% respectively, although these interventions had larger proportional contributions where their coverage was high (Extended Data Fig. 4). It is important to emphasise that these proportional contributions do not necessarily reflect the comparative effectiveness of different intervention strategies but, rather, are driven primarily by how early and at what scale the different interventions were deployed. In total, we estimated that malaria control interventions have averted 663 (542–753) million clinical cases since 2000, of which 68 (62-73)%, 22 (17-28)% and 10 (5-14)% were contributed by ITNs, ACTs, and IRS, respectively (Fig. 2b).

Discussion

Here, for the first time, the rapidly changing landscape of malaria risk in Africa has been quantified across the 15-year span of the Millennium Development Goals. Our approach is primarily data driven, informed by empirical observations in the field rather than theoretical models or extrapolated experimental results. Our modelling framework requires few prior

assumptions and allows patterns of change and attribution to be identified with rigorously defined metrics of uncertainty.

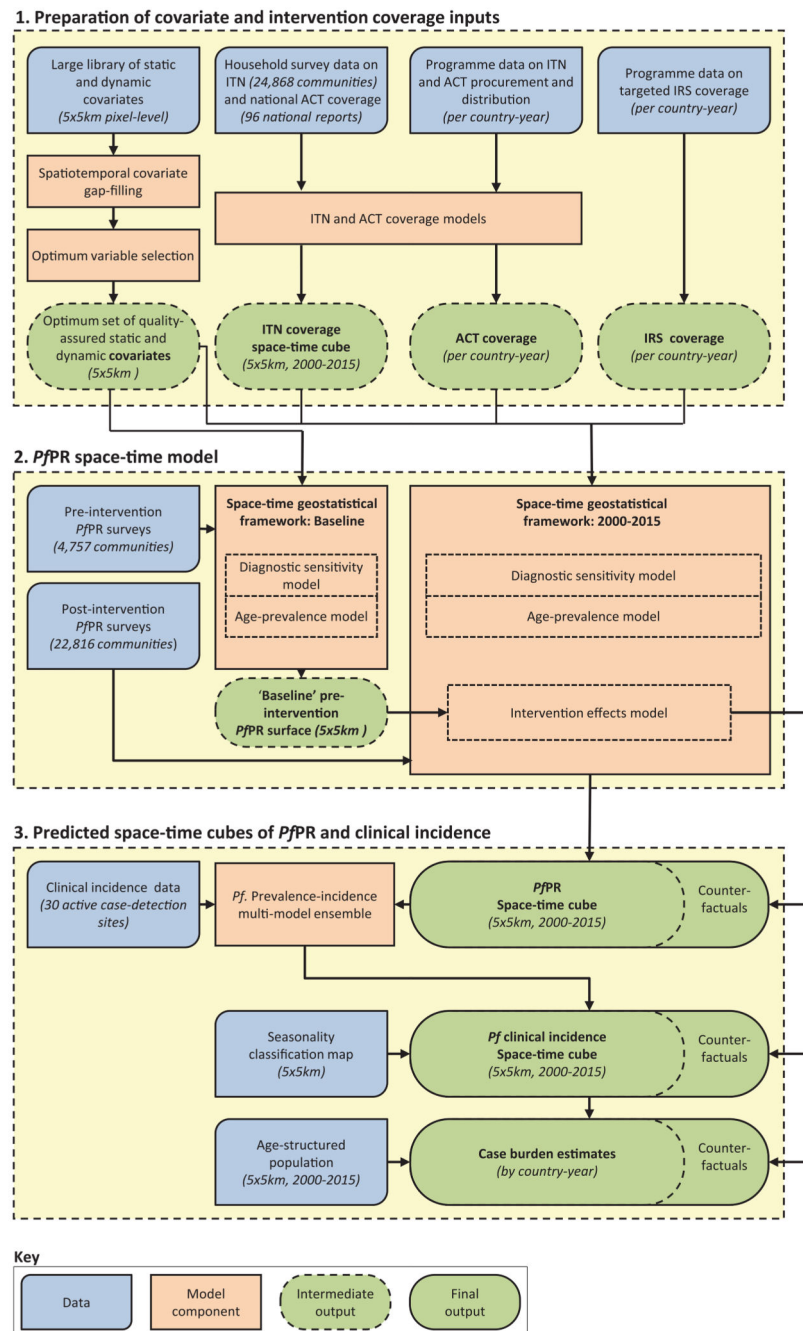
We have shown that remarkable and widespread reductions in infection prevalence and case incidence have occurred across Africa since 2000, and that malaria control interventions have been responsible for most of the decline even though they remain well below international targets for universal coverage¹. ITNs have had by far the largest effect, but have also been generally present for longer and at higher levels of coverage. IRS and ACTs have both made important contributions to reducing prevalence and incidence where they have been implemented at scale (although it is important to note that the primary role of ACTs is in averting severe disease and death rather than reducing transmission and uncomplicated cases).

This analysis has focused on evaluating changes in infection prevalence and clinical incidence, and we have not addressed effects on malaria mortality. Data on malaria deaths are sparse both spatially and temporally, and concerted efforts must be made to both increase data collection and improve the sensitivity and specificity of malaria death attribution. Integrating the results of the current study with existing malaria mortality estimation processes^{1,25,26}, to yield improved understanding of lives saved by malaria control, is an immediate priority.

The modelling framework presented here has been necessitated in part by the absence of detailed and robust surveillance data collected routinely by health systems across Africa. The development of more robust surveillance systems to deliver geographically detailed and timely data on malaria incidence will be an increasingly important strand of malaria control efforts, particularly if prevalence continues to decline and identification and rapid response to individual malaria cases becomes critical to achieve elimination.

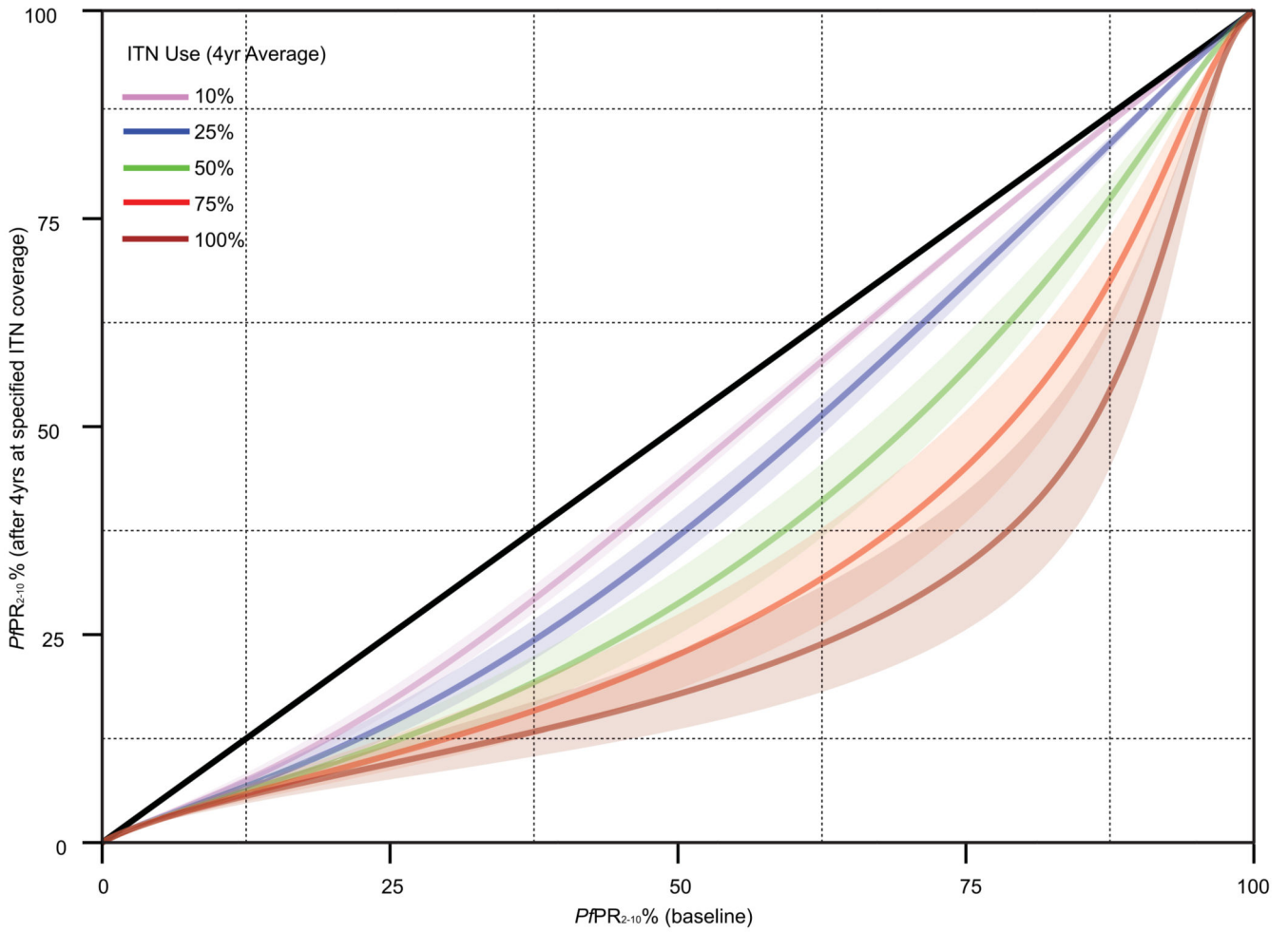
The efforts of the international community over the past 15 years have reduced malaria risk levels for many millions of people, and large regions of Africa are now in a position to consider elimination strategies. Despite this progress, many millions of people remain at risk of malaria disease and death in Africa in 2015. This analysis demonstrates that current malaria interventions have been highly effective at reducing prevalence and incidence across the continent, and provides strong support for sustaining and increasing access to these interventions as a cornerstone of post-2015 control strategies. This will need to be coupled with a redoubling of efforts to delay the spread of drug and insecticide resistance, tools for addressing the residual transmission that persists in some regions despite high vector control coverage, and concerted local programs to systematically detect and eliminate the remaining parasites.

Extended Data

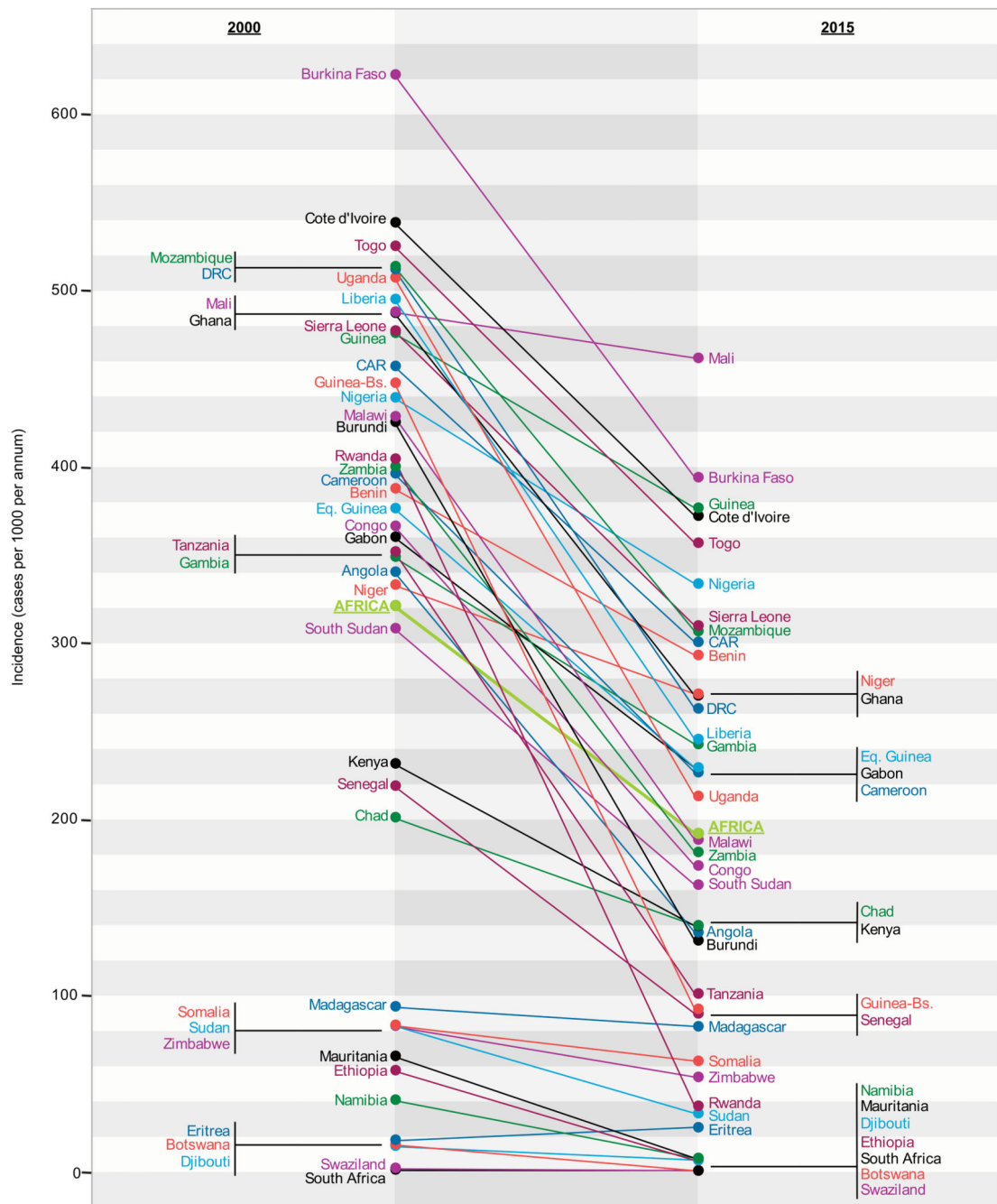


Extended Data Figure 1. Schematic overview of main input data, model components, and outputs

Each component is detailed in the Supplementary Information.

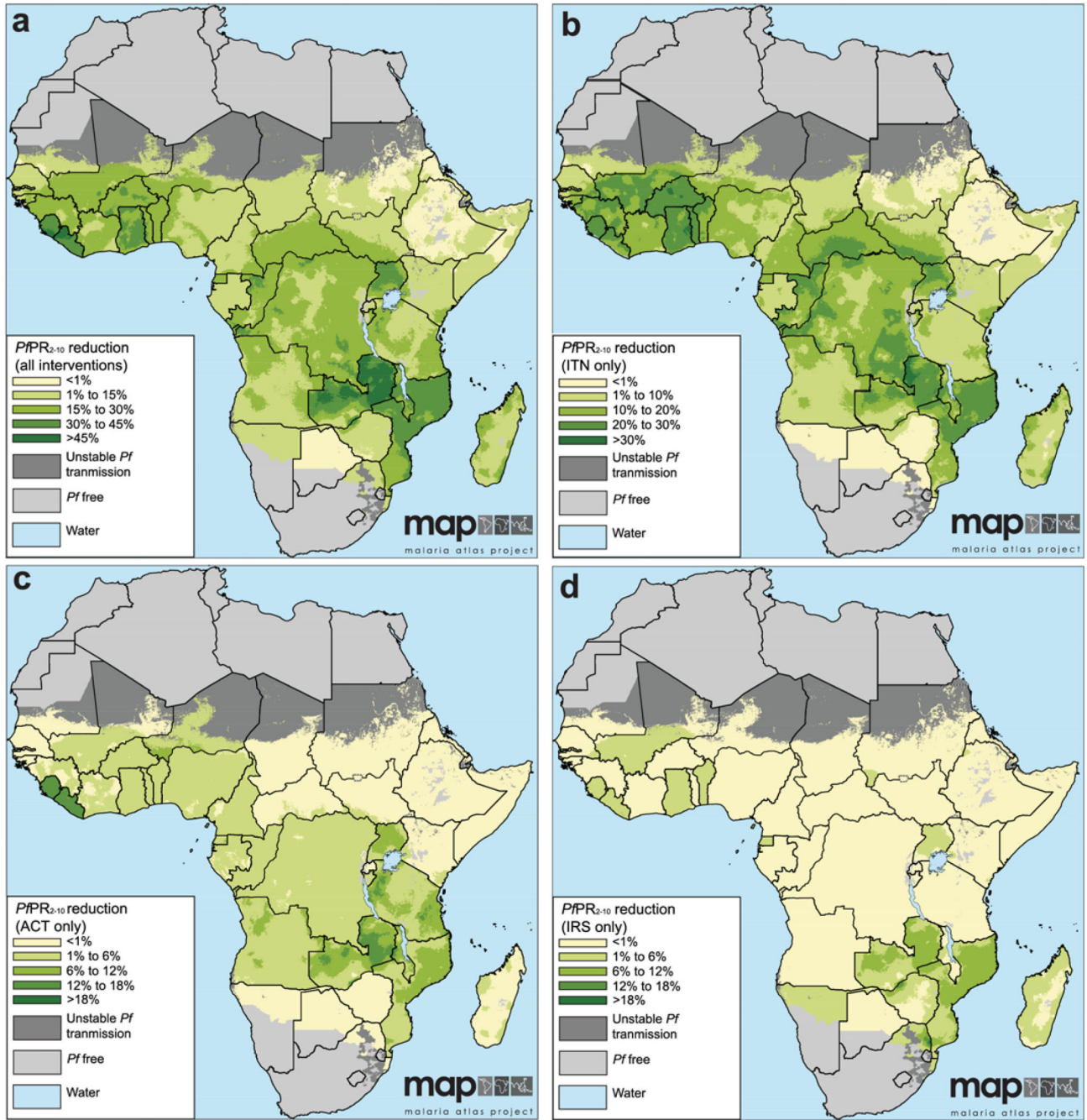


Extended Data Figure 2. Fitted function representing effect of ITNs
Curves illustrate the predicted effect of ITNs as a function of coverage (five example coverage levels are shown, specified as mean coverage over preceding 4-year period) and baseline transmission. The baseline *PfPR* is shown on the horizontal axis and the suppressed *PfPR* given the ITN coverage level shown on the vertical axis. The diagonal line (representing zero ITN effect) is shown in black, and parameter uncertainty around each ITN effect line is illustrated by the semi-transparent envelopes. Results shown are derived from a Bayesian geostatistical model fitted to: $n = 27,573$ *PfPR* survey points; $n = 24,868$ ITN survey points; $n = 96$ national survey reports of ACT coverage; $n = 688$ country-year reports on ITN, ACT and IRS distribution by national programs; and $n = 20$ environmental and socioeconomic covariate grids.



Extended Data Figure 3. Changing incidence rate by country, 2000–2015

Estimated country-level rates of all-age clinical incidence are shown for 2000 and 2015. For Sudan and South Sudan, we used the post-2011 borders throughout the time period to allow comparability. Results shown are derived from a Bayesian geostatistical model fitted to: $n = 27,573$ *PfPR* survey points; $n = 24,868$ ITN survey points; $n = 96$ national survey reports of ACT coverage; $n = 688$ country-year reports on ITN, ACT and IRS distribution by national programs; $n = 20$ environmental and socioeconomic covariate grids; and $n = 30$ active-case detection studies reporting *P. falciparum* clinical incidence.



Extended Data Figure 4. Decline in infection prevalence attributable to main malaria control interventions

a–d, Each map shows absolute decline in *PPR*₂₋₁₀ between 2000 and 2015 within areas of stable transmission attributable to the combined effect of ITNs, ACTs, and IRS (**a**); and the individual effect of ITNs (**b**); ACTs (**c**); and IRS (**d**). Note that the colour scaling differs between the panels. Results shown in all panels are derived from a Bayesian geostatistical model fitted to: $n = 27,573$ *PPR* survey points; $n = 24,868$ ITN survey points; $n = 96$ national survey reports of ACT coverage; $n = 688$ country-year reports on ITN, ACT and

IRS distribution by national programs; and $n = 20$ environmental and socioeconomic covariate grids. Maps in this figure are available from the Malaria Atlas Project (<http://www.map.ox.ac.uk/>) under the Creative Commons Attribution 3.0 Unported License.

Supplementary Material

Refer to Web version on PubMed Central for supplementary material.

Acknowledgements

The authors acknowledge assistance from M. Renshaw in providing information from the Roll Back Malaria Harmonization Working Group Programmatic Gap Analysis and other guidance in the interpretation of our results. We thank members of the Roll Back Malaria Monitoring and Evaluation Reference Group and the World Health Organization Surveillance Monitoring and Evaluation Technical expert Group for their feedback and suggestions. We thank C. Burgert of the DHS (Demographic and Health Surveys) Program for her assistance with DHS Survey access and interpretation. PWG is a Career Development Fellow (#K00669X) jointly funded by the UK Medical Research Council (MRC) and the UK Department for International Development (DFID) under the MRC/DFID Concordat agreement and receives support from the Bill and Melinda Gates Foundation (#OPP1068048, #OPP1106023). These grants also support EC, SB, BM, UD, DJW, DB, and AH. The Swiss TPH component was supported through the project #OPP1032350 funded by the BMGF. D.L.S. is funded by the BMGF (OPP1110495). S.H. is funded by a Senior Research Fellowship from the Wellcome Trust (#095066), which also supports KEB, and grants from the BMGF (nos. OPP1119467, OPP1106023 and OPP1093011). S.I.H. and D.L.S. also acknowledge funding support from the RAPIDD program of the Science & Technology Directorate, Department of Homeland Security, and the Fogarty International Center, National Institutes of Health. JTG is funded by an MRC Fellowship (#G1002284). EAW and PAE are funded by the Global Good Fund.

References

1. World Health Organization. World Malaria Report 2014. World Health Organization; Geneva: 2014.
2. Roll Back Malaria Partnership. World Health Organization. Global Malaria Action Plan 1 (2000-2015). World Health Organization; Geneva: 2008.
3. World Health Organization. Global Technical Strategy for Malaria 2016–2030. World Health Organization; Geneva: 2015.
4. Roll Back Malaria Partnership. World Health Organization. Action and Investment to Defeat Malaria 2016-2030. World Health Organization on behalf of the Roll Back Malaria Partnership Secretariat; Geneva: 2015.
5. Rowe AK, et al. Caution is required when using health facility-based data to evaluate the health impact of malaria control efforts in Africa. *Malar. J.* 2009; 8:209. [PubMed: 19728880]
6. Chizema-Kawesha E, et al. Scaling up malaria control in Zambia: Progress and impact 2005-2008. *Am. J. Trop. Med. Hyg.* 2010; 83:480–488. [PubMed: 20810807]
7. Lim SS, et al. Net benefits: a multicountry analysis of observational data examining associations between insecticide-treated mosquito nets and health outcomes. *PLoS Med.* 2011; 8:e1001091. [PubMed: 21909249]
8. Lengeler C. Insecticide-treated bed nets and curtains for preventing malaria. *Cochrane database Syst. Rev.* 2004;CD000363. [PubMed: 15106149]
9. Giardina F, et al. Effects of vector-control interventions on changes in risk of malaria parasitaemia in sub-Saharan Africa: a spatial and temporal analysis. *Lancet Glob. Heal.* 2014; 2:e601–e615.
10. Hay SI, et al. A world malaria map: *Plasmodium falciparum* endemicity in 2007. *PLoS Med.* 2009; 6:e1000048. [PubMed: 19323591]
11. Gething PW, et al. A new world malaria map: *Plasmodium falciparum* endemicity in 2010. *Malar. J.* 2011; 10:378. [PubMed: 22185615]
12. Noor AM, et al. The changing risk of *Plasmodium falciparum* malaria infection in Africa: 2000-10: a spatial and temporal analysis of transmission intensity. *Lancet.* 2014; 383:1739–47. [PubMed: 24559537]

13. Patil AP, et al. Defining the relationship between *Plasmodium falciparum* parasite rate and clinical disease: statistical models for disease burden estimation. *Malar. J.* 2009; 8:186. [PubMed: 19656373]
14. Griffin JT, Ferguson NM, Ghani AC. Estimates of the changing age-burden of *Plasmodium falciparum* malaria disease in sub-Saharan Africa. *Nat. Commun.* 2014; 5:3136. [PubMed: 24518518]
15. Smith T, et al. Ensemble modeling of the likely public health impact of a pre-erythrocytic malaria vaccine. *PLoS Med.* 2012; 9:e1001157. [PubMed: 22272189]
16. Hay SI, et al. Estimating the global clinical burden of *Plasmodium falciparum* malaria in 2007. *PLoS Med.* 2010; 7:14.
17. Diggle, P.; Ribeiro, P. *Model-based Geostatistics*. Springer; New York: 2007.
18. Weiss DJ, et al. Re-examining environmental correlates of *Plasmodium falciparum* malaria endemicity: a data-intensive variable selection approach. *Malar. J.* 2015; 14:68. [PubMed: 25890035]
19. Smith DL, Guerra CA, Snow RW, Hay SI. Standardizing estimates of the *Plasmodium falciparum* parasite rate. *Malar. J.* 2007; 6:131. [PubMed: 17894879]
20. Cameron E, et al. Defining the relationship between infection prevalence and clinical incidence of *Plasmodium falciparum* malaria. *Nat. Commun.* in press.
21. Wenger EA, Eckhoff PA. A mathematical model of the impact of present and future malaria vaccines. *Malar J.* 2013; 12:10. [PubMed: 23298401]
22. Battle KE, et al. Global database of *Plasmodium falciparum* and *P.vivax* incidence records. *Sci. Data.* 2015; 2:150012. [PubMed: 26306203]
23. WorldPop. WorldPop gridded population distributions. 2015. www.worldpop.org.uk
24. Cibulskis RE, Aregawi M, Williams R, Otten M, Dye C. Worldwide incidence of malaria in 2009: estimates, time trends, and a critique of methods. *PLoS Med.* 2011; 8:e1001142. [PubMed: 22205883]
25. Liu L, et al. Global, regional, and national causes of child mortality in 2000–13, with projections to inform post-2015 priorities: an updated systematic analysis. *Lancet.* 2014; 385:430–440. [PubMed: 25280870]
26. Global, regional, and national age–sex specific all-cause and cause-specific mortality for 240 causes of death, 1990–2013: a systematic analysis for the Global Burden of Disease Study 2013. *Lancet.* 2014; 385:117–171. [PubMed: 25530442]

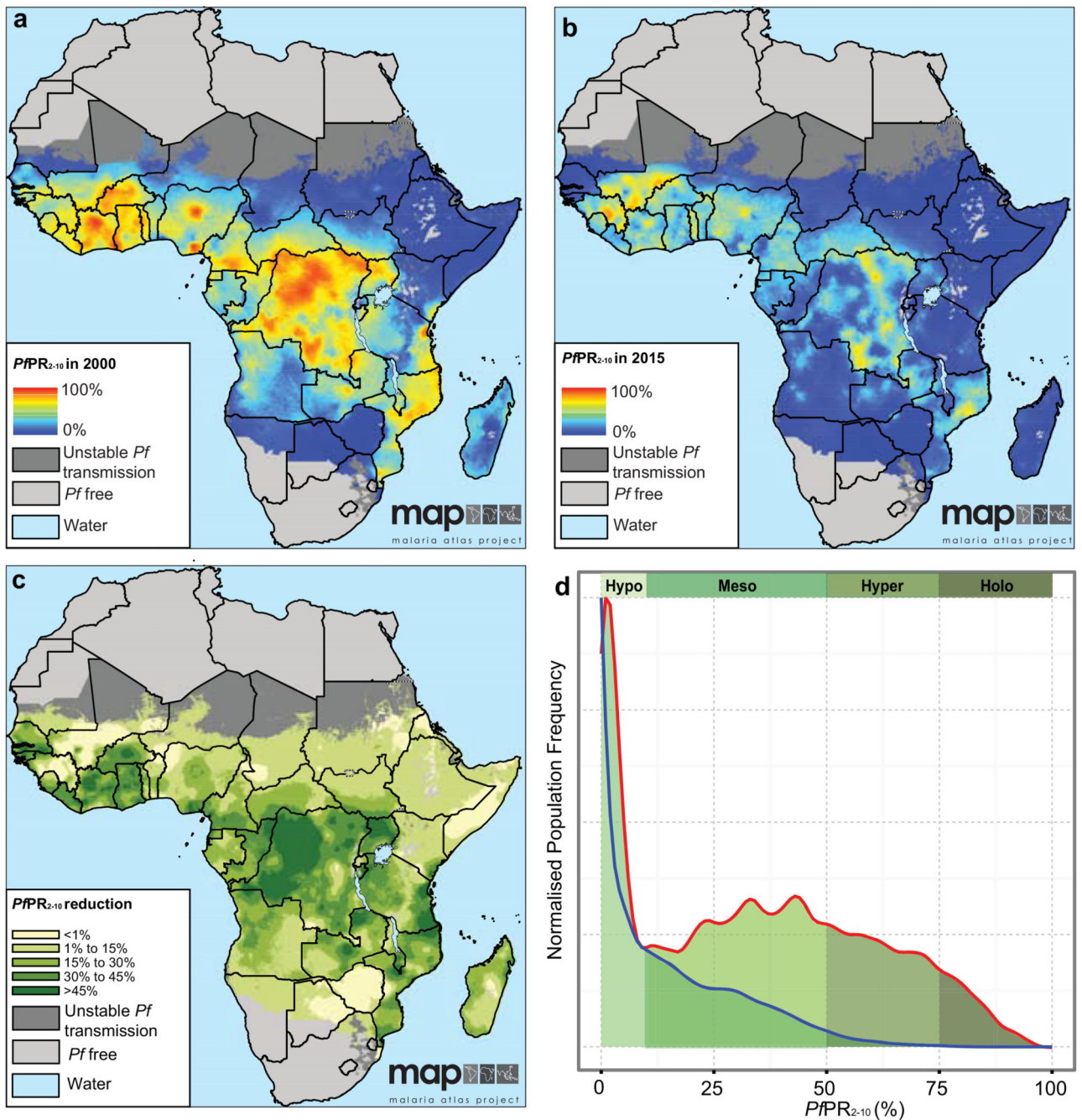


Figure 1. Changes in infection prevalence 2000–2015

a, PPR_{2-10} for the year 2000 predicted at 5×5 km resolution. **b**, PPR_{2-10} for the year 2015 predicted at 5×5 km resolution. **c**, Absolute reduction in PPR_{2-10} from 2000 to 2015. **d**, Smoothed density plot showing the relative distribution of endemic populations by PPR_{2-10} in the years 2000 (red line) and 2015 (blue line). The frequencies on the vertical axis have been scaled to make the densities visually comparable. The classical endemicity categories are shown for reference in green shades. Results shown in all panels are derived from a Bayesian geostatistical model fitted to: $n = 27,573$ *PPR* survey points; $n = 24,868$ ITN

survey points; $n = 96$ national survey reports of ACT coverage; $n = 688$ country-year reports on ITN, ACT and IRS distribution by national programs; and $n = 20$ environmental and socioeconomic covariate grids. Maps in a–c are available from the Malaria Atlas Project (<http://www.map.ox.ac.uk/>) under the Creative Commons Attribution 3.0 Unported License.

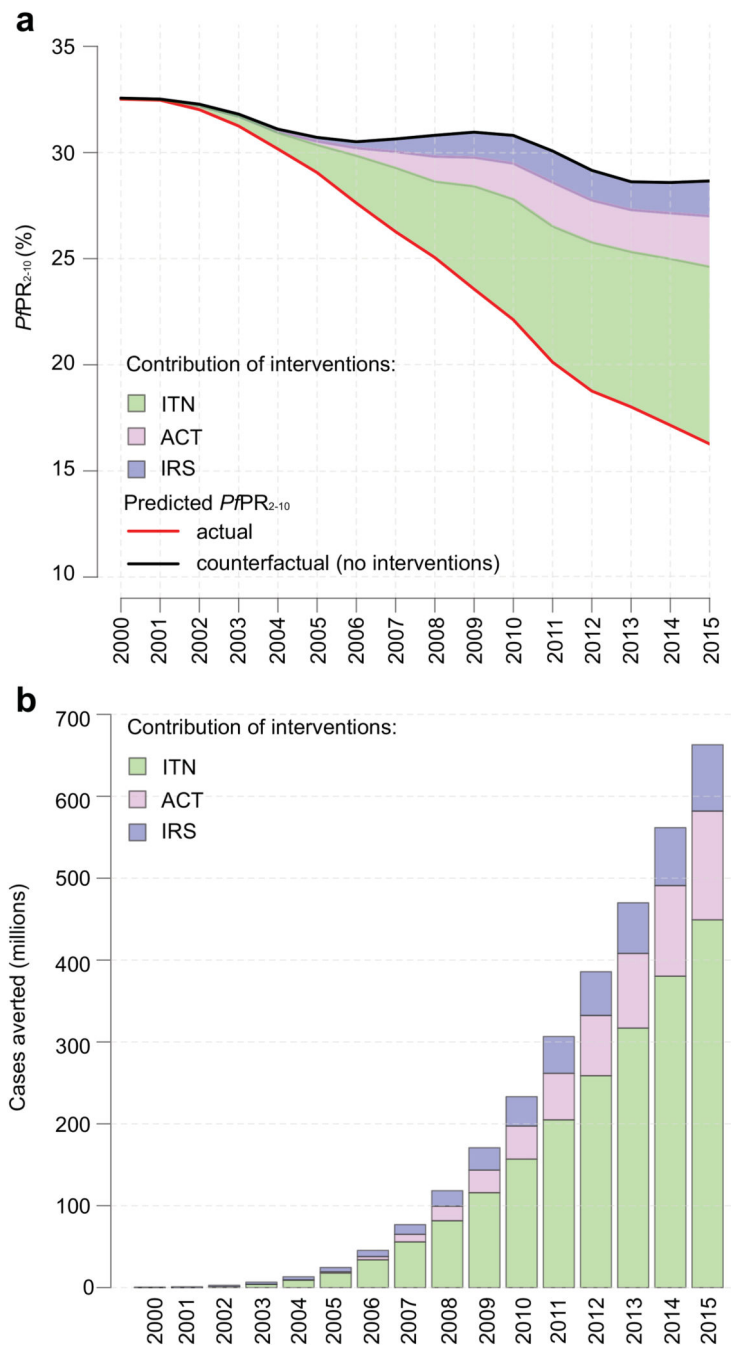


Figure 2. Changing endemicity and effect of interventions 2000–2015

a, Predicted time series of population-weighted mean PPR_{2-10} across endemic Africa. The red line shows the actual prediction and the black line a ‘counterfactual’ prediction in a scenario without coverage by ITNs, ACTs, or IRS. The coloured regions indicate the relative contribution of each intervention in reducing PPR_{2-10} throughout the period. **b**, The predicted cumulative number of clinical cases averted by interventions at the end of each year, with the specific contribution of each intervention distinguished. Results shown in both panels are derived from a Bayesian geostatistical model fitted to: $n = 27,573$ PPR survey

points; $n = 24,868$ ITN survey points; $n = 96$ national survey reports of ACT coverage; $n = 688$ country-year reports on ITN, ACT and IRS distribution by national programs; and $n = 20$ environmental and socioeconomic covariate grids. Panel **b** additionally incorporates data from $n = 30$ active-case detection studies reporting *P. falciparum* clinical incidence.

Table 1
Changing distribution of malaria endemicity across stable endemic Africa, 2000 to 2015

Endemicity class	Population (%)			Area (%)		
	2000	2015	Change (%)	2000	2015	Change (%)
Holo ($PPR_{2-10} > 75\%$)	11.57	1.32	-88.57	11.81	1.38	-88.32
Hyper ($PPR_{2-10} 50-75\%$)	21.51	7.46	-65.31	20.18	7.88	-60.93
Meso ($PPR_{2-10} 10-50\%$)	41.32	42.41	+2.64	40.98	41.06	+0.19
Hypo ($PPR_{2-10} < 10\%$)	25.60	48.80	+90.63	27.02	49.67	+83.84
<i>Total</i>	<i>100.00</i>	<i>100.00</i>		<i>100.00</i>	<i>100.00</i>	
Pre-elimination or eliminating ($PPR_{2-10} < 1\%$)	3.82	13.61	+255.93	3.48	11.39	+227.51