

ARTICLE

Received 30 Sep 2015 | Accepted 16 Mar 2016 | Published 13 Apr 2016

DOI: 10.1038/ncomms11359

OPEN

Phosphorylation modifies the molecular stability of β -amyloid deposits

Nasrollah Rezaei-Ghaleh¹, Mehriar Amininasab², Sathish Kumar³, Jochen Walter³ & Markus Zweckstetter^{1,4,5}

Protein aggregation plays a crucial role in neurodegenerative diseases. A key feature of protein aggregates is their ubiquitous modification by phosphorylation. Little is known, however, about the molecular consequences of phosphorylation of protein aggregates. Here we show that phosphorylation of β -amyloid at serine 8 increases the stability of its pathogenic aggregates against high-pressure and SDS-induced dissociation. We further demonstrate that phosphorylation results in an elevated number of hydrogen bonds at the N terminus of β -amyloid, the region that is critically regulated by a variety of post-translational modifications. Because of the increased lifetime of phosphorylated β -amyloid aggregates, phosphorylation can promote the spreading of β -amyloid in Alzheimer pathogenesis. Our study suggests that regulation of the molecular stability of protein aggregates by post-translational modifications is a crucial factor for disease progression in the brain.

¹German Center for Neurodegenerative Diseases (DZNE), 37075 Göttingen, Germany. ²Department of Cell and Molecular Biology, School of Biology, College of Science, University of Tehran, 1417466191 Tehran, Iran. ³Department of Neurology, University of Bonn, 53127 Bonn, Germany. ⁴Department for NMR-based Structural Biology, Max Planck Institute for Biophysical Chemistry, 37077 Göttingen, Germany. ⁵Department of Neurology, University Medical Center Göttingen, University of Göttingen, 37073 Göttingen, Germany. Correspondence and requests for materials should be addressed to N.R.-G. (email: Nasrollah.Rezaei-Ghaleh@dzne.de) or to J.W. (email: Jochen.Walter@ukb.uni-bonn.de) or to M.Z. (email: Markus.Zweckstetter@dzne.de).

Protein aggregation plays a crucial role in several neurodegenerative diseases such as Alzheimer (AD) and Parkinson disease¹. A remarkable feature of neurotoxic protein aggregation is the ubiquitous presence of post-translational modifications of aggregated proteins^{2,3}. A particular abundant modification of amyloid deposits is phosphorylation⁴. Phosphorylation influences protein–protein and protein–lipid interactions, protein turnover and subcellular localization of neurodegeneration-related proteins^{4–8}. In addition, phosphorylation plays a significant role in regulating the clearance mechanisms of proteinaceous deposits^{4,7,9,10}. Despite its relevance in neurodegenerative diseases, the effect of phosphorylation on the molecular properties of amyloid deposits is largely unknown.

Protein amyloid fibrils exhibit remarkable stability against physical perturbations suggesting that they may represent the lowest free-energy state in the conformational energy landscape of proteins^{11,12}. Amyloid fibrils also possess intriguing mechanical properties with an elastic Young's modulus comparable to that of the most rigid proteinaceous materials in nature¹³. The nanomechanical features of amyloid fibrils influence the kinetics of fibril growth by modulating their inherent fragmentation tendency¹⁴. Fragmentation of protein fibrils is therefore thought to be crucial for propagation and spreading of disease pathology¹⁵. Less ordered but more toxic aggregate species such as protofibrils and early oligomeric assemblies often have lower physical and mechanical stability than fully formed fibrils^{13,16,17}, further supporting a strong link between the stability of protein aggregates and their pathological function¹⁴.

Early-onset familial forms of AD are generally caused by mutations, which increase amyloid β (A β) production, elevate A β 42/A β 40 ratio or enhance A β propensity for formation of toxic aggregates¹⁸. In contrast, causes of the much more common late-onset sporadic AD are poorly understood. It has been suggested that post-translational modifications such as phosphorylation, nitration and pyroglutamination may play an important role in the initiation and progression of sporadic AD^{4,19–21}. Indeed, extracellular A β can undergo phosphorylation by a cell surface-localized or secreted form of protein kinase A and A β phosphorylated at serine 8 is detectable in human AD brain^{22,23}. Phosphorylation of A β at serine 8 markedly accelerates aggregation of A β *in vitro* and *in vivo* and increases A β -mediated toxicity in *Drosophila* models of AD²². In addition, it attenuates proteolytic degradation of A β by certain proteases²⁴.

Here we investigate how phosphorylation at serine 8 alters the kinetic and thermodynamic stability of A β aggregates. Using high-pressure nuclear magnetic resonance (NMR) and molecular dynamics (MD) simulation, we demonstrate that phosphorylation modifies the stability of amyloid aggregates of A β and propose a structural basis for the higher stability of phosphorylated A β aggregates. Our study supports an important role of phosphorylation and other post-translational modifications of amyloid deposits in neurodegenerative diseases.

Results

A β aggregates are sensitive to pressure. To investigate the effect of phosphorylation on the stability of A β aggregates, we employed high pressure as a tool to induce protein disaggregation. In general, the susceptibility of protein aggregates to high pressures is largely governed by their degree of compaction^{25–27}. Mature amyloid fibrils are largely resistant to pressure, because tight packing of their backbone and side-chain groups minimizes void volumes inside the fibrils. In contrast, aggregates, which appear early during amyloid aggregation, are often rich of

internal water-excluded cavities²⁸, rendering them sensitive to pressure-induced dissociation^{11,16}. In addition, ionic interactions often experience significant volume decrease on disruption and are therefore sensitive to high pressure²⁹. To assist pressure-induced dissociation of A β aggregates, we performed the experiments at 0 °C.

Wild-type A β (npA β) and A β phosphorylated at serine 8 (pS8A β) were incubated in aggregation-prone conditions for 4 days, which led to the formation of mature amyloid fibrils (Fig. 1a). Subsequently the aggregates were exposed to increasing pressures up to 2,000 bar and the release of A β monomers was monitored by one-dimensional proton NMR spectroscopy. Figure 1b demonstrates that A β monomers were released from the preformed aggregates of both npA β and pS8A β in

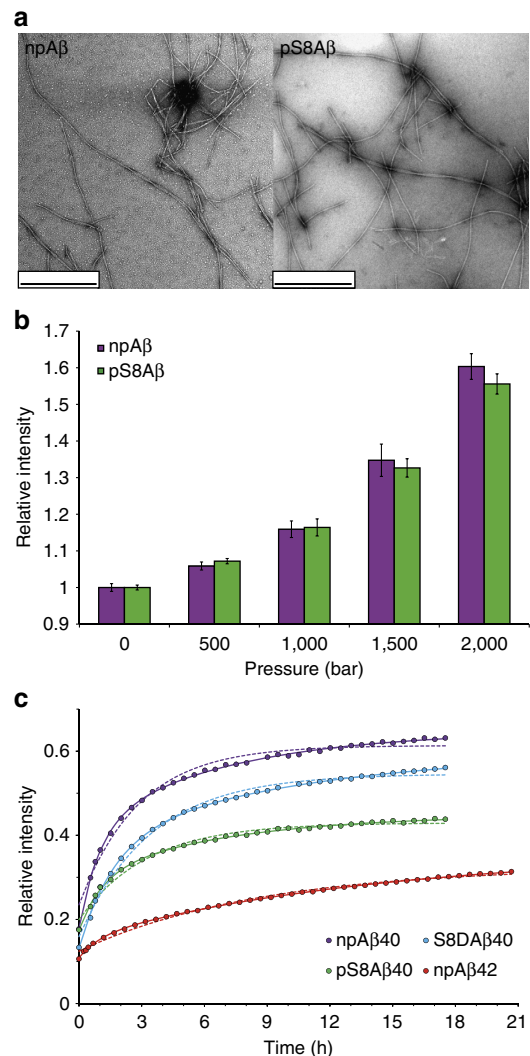


Figure 1 | A β aggregates have distinct pressure stability. (a) Electron micrographs of aggregated A β 40 in its non-phosphorylated (npA β) and S8-phosphorylated (pS8A β) state reveal amyloid fibrils of similar morphology. Scale bar, 500 nm. (b) Pressure dependence of A β monomer release from npA β (magenta) and pS8A β (green) aggregates. Error bars represent the s.d. between three consecutive measurements each taking 10 min. (c) Time dependence of A β monomer release, as followed by NMR signal intensities, on incubation of aggregated A β at a hydrostatic pressure of 2,000 bar. Data fit to mono- and bi-exponential functions are presented in dotted and solid lines, respectively. Phosphorylation at S8 attenuates the monomer release from A β 40 aggregates. In addition, A β 42 aggregates (red) are more stable than A β 40 aggregates.

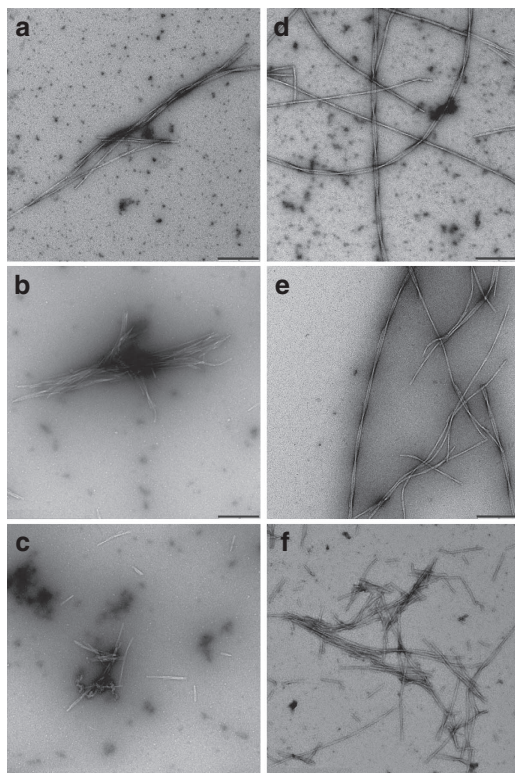


Figure 2 | Effect of high pressure on A β fibrils. Electron micrographs of npA β (a–c) and pS8A β (d–f) aggregates, before (a,d) and after (b–c,e–f) application of high hydrostatic pressure (2,000 bar, 18 h). Many fibrils were unaffected by the high pressure (b,e), but some broken fibrils were also observed (c,f). Scale bar, 200 nm.

dependence of the applied pressure. Consistent with a pressure-induced perturbation of the aggregates, a slight reduction in the ThT fluorescence signal intensities was observed after pressure application (Supplementary Fig. 1). The drop in ThT intensity was lower than the level of concomitant A β monomer release suggesting that the released A β monomers originated partly from non-ThT reactive aggregates. Application of pressure up to 2,000 bar did not have a large effect on the morphology A β fibrils, although a number of broken fibrils were detected after pressure application (Fig. 2).

Phosphorylation modifies the stability of A β aggregates. For both npA β and pS8A β , incubation in aggregation-prone conditions for 96 h decreased the NMR signal intensity to $\sim 18\%$ of the initial value, indicating conversion of $>80\%$ of A β molecules to NMR-invisible aggregates. We then followed the kinetics of A β monomer release at 2,000 bar: after ~ 18 h of incubation at 2,000 bar, the NMR intensity increased from 18 to $\sim 63\%$ for npA β and to $\sim 44\%$ for pS8A β (Fig. 1c). To quantify the release of A β monomers from the aggregates, we fitted the gradual rise in NMR signal intensities to a monoexponential function. From the analysis an apparent rate R of $0.79 \pm 0.04 \times 10^{-4} \text{ s}^{-1}$ and limiting intensity value of 0.62 were obtained for npA β 40. In case of pS8A β 40, values of $0.73 \pm 0.04 \times 10^{-4} \text{ s}^{-1}$ and 0.43 were calculated. Notably, the quality of fit was significantly improved when a bi-exponential function was used (Fig. 1c; Supplementary Table 1).

To interpret the fitting parameters in terms of physical rates, we first assumed the simplest model involving only a single step of reversible A β monomer dissociation from aggregates (Fig. 3a).

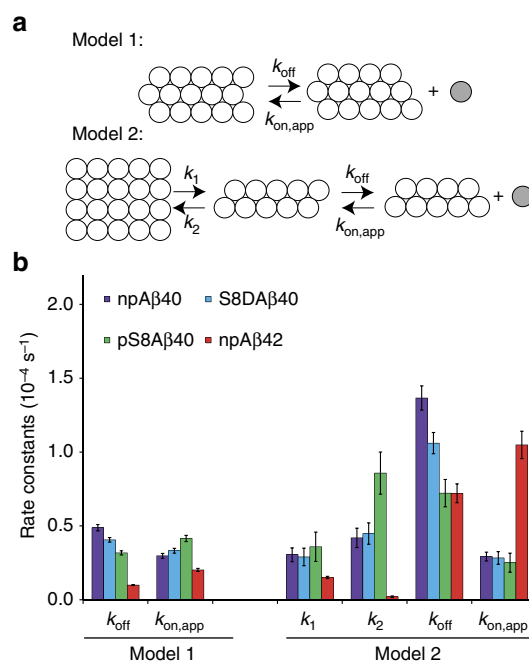


Figure 3 | Phosphorylation modulates the kinetic and thermodynamic stability of A β aggregates. (a) Schematic representation of two kinetic models for aggregate dissociation. Model 1 consists of a single step of reversible A β monomer (grey) dissociation from aggregates. Model 2 involves a reversible step in which A β aggregates are converted to an intermediate state under rate constants k_1 and k_2 , followed by a second reversible step of monomer release from the intermediate state. (b) Rate constants obtained from the analysis of monomer release kinetics (Fig. 1c) according to the two kinetic models shown in a. Error bars represent s.e.s of fitting parameters.

Assuming that the association reaction obeys (pseudo) first-order kinetics in terms of monomer concentration, the rates of monomer dissociation (k_{off}) of $0.49 \pm 0.02 \times 10^{-4} \text{ s}^{-1}$ for npA β and $0.32 \pm 0.01 \times 10^{-4} \text{ s}^{-1}$ for pS8A β were obtained. The corresponding association rates ($k_{on,app}$) were $0.30 \pm 0.02 \times 10^{-4} \text{ s}^{-1}$ (npA β) and $0.42 \pm 0.05 \times 10^{-4} \text{ s}^{-1}$ (pS8A β). The obtained k_{off} rate of $0.49 \pm 0.02 \times 10^{-4} \text{ s}^{-1}$ for npA β is comparable to the off-rate value of $1.2 \times 10^{-4} \text{ s}^{-1}$ previously reported for the protofibrils of wild-type A β 40 (25 °C, ambient pressure) on the basis of fluorescence measurements³⁰. In case of amyloid fibrils formed by an SH3 domain (28 °C, ambient pressure), a dissociation rate of $1.4 \times 10^{-4} \text{ s}^{-1}$ had been estimated³¹. Compared with the extrapolated k_{off} value of $\sim 0.06 \times 10^{-4} \text{ s}^{-1}$ at 0 °C in ref. 30, the use of high pressure in our study has resulted in an about eightfold increase in the monomer dissociation rate of npA β .

In the next step, we considered a more complex model involving two steps: first, a reversible step in which A β aggregates are converted to an intermediate state under rate constants k_1 and k_2 , and second, the reversible monomer dissociation from these intermediate aggregates governed by the rate constants k_{off} and $k_{on,app}$ as described above (Fig. 3a). This model implies bi-exponential behaviour of A β monomer level in response to increased pressure, which was shown above to better fit to the experimental data than the monoexponential model (Fig. 1c; Supplementary Tables 1 and 2). Serine 8 phosphorylation did not have a significant effect on the forward kinetics of the first step, but diminished k_{off} rate in the second step (Fig. 3b; Supplementary Table 2). The lower level of pressure-induced monomer release from pS8A β than from npA β aggregates provides substantial support for an enhanced stability of A β aggregates in the

S8-phosphorylated state. In addition, the decrease in the monomer dissociation rate (k_{off}) for both models demonstrates the increased kinetic stability of phosphorylated A β aggregates.

Aspartate variants are widely used to model defined phosphorylation states of neurotoxic proteins *in vivo*. Indeed, replacement of serine 8 by aspartate in A β promotes its aggregation similar to pS8A β (Supplementary Fig. 2)²². We therefore asked whether the S8D substitution could also mimic the effect of S8-phosphorylation on the stability of A β aggregates. To this end, we exposed S8DA β aggregates to high pressure. Figure 1c shows that the level of pressure-induced monomer release from S8DA β aggregates was in between that of npA β and pS8A β (Supplementary Table 1). Comparison of the kinetic parameters of npA β , S8DA β and pS8A β monomer release demonstrated that the off-rate k_{off} was similarly reduced in S8DA β albeit at a smaller level than pS8A β (Fig. 3b; Supplementary Table 2). In contrast, no significant changes in the apparent on-rates $k_{\text{on,app}}$ were observed (Fig. 3b). This suggests differences between phosphomimetic variants and naturally occurring phosphorylated proteins even when, as it is the case for the pS8A β and S8DA β , the general aggregation behaviour of phosphorylated and phosphomimetic protein is similar.

Volume change on A β monomer release from aggregates. To gain insight on the impact of S8 phosphorylation on volume changes during A β monomer release, we monitored how the equilibrium between aggregated and monomeric A β is affected by pressure. After 2 days of pressure application to aggregated A β samples (at 500, 1,000, 1,500 and 2,000 bar, 0 °C), the A β monomer levels were quantified by NMR and the equilibrium constants between A β aggregates and monomers derived (equation (3)). As shown in Fig. 4, the pressure dependence of free-energy change on monomer release from npA β 40 aggregates ($\Delta G_{\text{A} \rightarrow \text{M}}$) resulted in an apparent volume change of $23 \pm 1 \mu\text{l mol}^{-1}$. Since the free-energy change at ambient pressure was quite close to the intercept of the fitted line, the volume change on monomer release seemed to be effectively constant over the studied pressure range. On the other hand, the volume change on monomer release from pS8A β 40 aggregates was only $8 \pm 1 \mu\text{l mol}^{-1}$, three times lower than that of npA β 40. Notably, the free-energy change at ambient pressure was significantly above the fitted line (green data point at ambient pressure in Fig. 4), indicating that the volume change on monomer release was decreased by pressure, that is, the compressibility of pS8A β 40 aggregates in water was higher than its monomers.

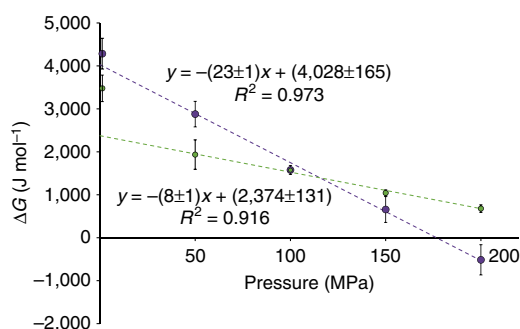


Figure 4 | Volume change on A β monomer release from aggregates. The pressure dependence of free-energy change on monomer dissociation from npA β 40 (magenta) and pS8A β 40 (green) aggregates is shown. Slopes of fitted lines represent volume changes on A β monomer release from aggregates, which is approximately three times smaller in pS8A β 40. Error bars indicate 1 s.d. of 2–5 repeated measurements.

Mechanistic basis of altered stability of amyloid fibrils. Despite the drastically higher rate and amount of amyloid aggregation of pS8A β , the morphology of fibrils differed only subtly from that of npA β (Fig. 1a). In the negatively stained transmission electron micrographs, the fibrils formed by the two peptides were similarly twisted and their apparent diameter (maximum width) was 13.7 ± 3.6 nm for npA β and 11.5 ± 1.9 nm for pS8A β . The size and morphology of A β 40 fibrils resembled those generated in a previous study under quiescent condition and lower temperature of 24 °C (ref. 32). The size distribution of npA β fibrils exhibited a weakly bimodal behaviour, with the major and minor modes centered at ~ 12 and 24 nm, respectively, (Supplementary Fig. 3). Fibrils of pS8A β were more strongly centered at the 12-nm mode, suggesting that phosphorylation of serine 8 affected the higher order assembly of A β 40 fibrils.

To gain insight into the molecular basis of the increased structural stability of A β aggregates, we performed MD simulations of A β 40 fibrils in different phosphorylation states. As starting conformation we selected the threefold symmetric structure of A β 40 fibrils prepared after seeding by *in vivo* plaques³³. This structure was chosen because it is currently the only available experimental model of A β fibrils, which contains detailed coordination information about the structure of the N-terminal residues of A β . The high level of similarity in fibrillar morphology of npA β and pS8A β (Fig. 1a; Supplementary Fig. 3) supports the use of same structural model for both species.

Figure 5a shows how the mobility of the backbone atoms of A β 40 amyloid fibrils is influenced by the phosphorylation state of serine 8. The most flexible part of the wild-type A β 40 sequence in the MD simulation is the N-terminal region: the backbone atoms of D1–Y10 experienced high root-mean-square fluctuations (r.m.s.f.) when compared with other parts of A β 40. When serine 8 was phosphorylated, an overall decrease in the r.m.s.f. of the backbone atoms was observed, but the strongest reduction was found for residues F4–Y10. In addition, V24–N27 and G38–V40 showed a slight drop in r.m.s.f. (Fig. 5a). Mapping of r.m.s.f. values onto a three-dimensional structure of A β 40 fibrils³³ showed that the two patches of residues, F4–Y10 and V24–N27 that partially lose their mobility on S8-phosphorylation, are in spatial proximity to the phosphorylation site (Supplementary Fig. 4). Comparison of the average conformation of the last 25 ns of the MD trajectory further highlights the distinct mobility of A β 40 fibrils when phosphorylated at serine 8 (Supplementary Fig. 5). In case of the phosphomimetic mutation, the reduction in backbone mobility was less pronounced and was restricted more to the N-terminal region (Fig. 5a; Supplementary Fig. 5).

Phosphoserines have a higher capacity for hydrogen bond formation than serine residues, because the phosphate group can act both as donor and acceptor in hydrogen bonds. To see whether the higher rigidity of the N-terminal region in S8-phosphorylated A β 40 fibrils is caused by the stronger hydrogen bond capacity of phosphoserine, we calculated the existence probability of several hydrogen bonds involving the phosphorylated residue. While the total number of hydrogen bonds in npA β and pS8A β fibrils was highly similar (~ 23 for A β molecule), phosphorylation of serine 8 enhanced hydrogen bond formation between S8 and the nearby residues R5–Y10 within the same or adjacent A β molecules (Fig. 5b). In addition, a long-range hydrogen bond between S8 and S26 was slightly more populated when serine 8 was phosphorylated. Notably, some hydrogen bonds not involving the phosphoserine were also more frequently populated, for example, between D7 and S26, and to a lesser extent between Y10 and N27.

To investigate how S8 phosphorylation influences backbone conformation in the proximity of the phosphorylation site, we compared the intramolecular distance between CA atoms of

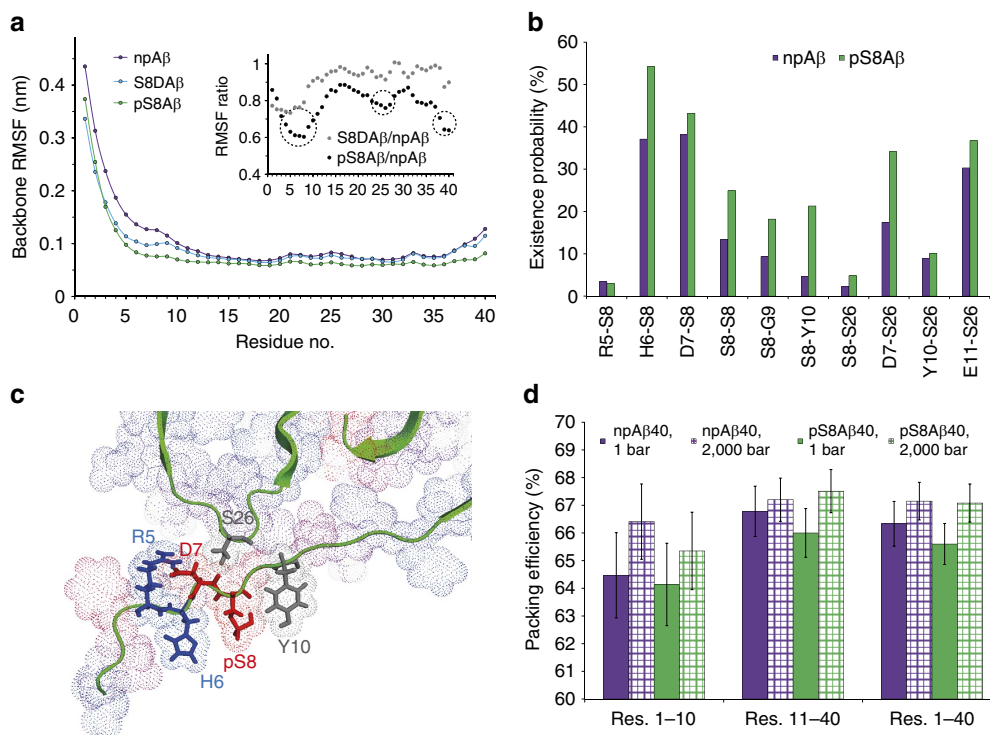


Figure 5 | Structural basis for the increased rigidity of A β aggregates phosphorylated at serine 8. (a) Residue-specific r.m.s. of fluctuations (RMSF) in backbone atom positions averaged over the last 25 ns of MD trajectories of npA β (magenta), S8DA β (blue) and pS8A β (green) amyloid fibrils. The inset shows the respective ratios with strongly affected regions circled. (b) Probability of hydrogen bond formation between the N-terminal residues of A β , as well as interstrand hydrogen bond formation with residues S26–N27. Phosphorylation at serine 8 increases the frequency of hydrogen bond formation. (c) Favourable electrostatic interactions in the N-terminal region of A β 40 fibrils phosphorylated at serine 8. (d) Packing efficiency of npA β 40 and pS8A β 40 fibrils at low (1 bar) and high (2,000 bar) pressure, reported separately for residues 1–10 in the N-terminal region, residues 11–40 and the whole A β molecule. Compared with npA β 40, the pS8A β 40 fibrils experience larger pressure-induced increase in packing efficiency, particularly in residues 11–40. Error bars represent one s.d. over the last 25 ns of MD simulation trajectories.

residues E3–Y10 in npA β and pS8A β fibrils. The average E3CA–Y10CA distance increased from 1.94 ± 0.02 nm in npA β fibrils to 2.06 ± 0.01 nm in pS8A β fibrils, an increase of $\sim 6\%$ which is probably caused by additional steric demand in the phosphorylated fibrils (change to a fully extended conformation would increase this distance by 30%). In addition, the average structures of the A β fibrils over the MD trajectory offer a potential basis for the local conformation (Fig. 5c): a favourable electrostatic interaction between H6 and the phosphorylated S8 leads to the rearrangement of residues R5–Y10. Due to this rearrangement, the electrostatic attraction between the side chains of R5 and D7 is stabilized and the side chains of pS8 and Y10 form a hydrogen bond. In addition, hydrogen bond formation between the backbone atoms of D7 and the side-chain OH of S26 is favoured, contributing to the partial rigidification of S26 and its nearby residues.

Phosphorylation increases compressibility of A β fibrils. To address how S8 phosphorylation influences the volume of npA β 40 and pS8A β 40 fibrillar state in dependence of pressure, we performed MD simulations at the elevated pressure of 2,000 bar. The packing efficiency of A β fibrils was then calculated as the ratio of the van der Waals to Voronoi volumes and compared between low and high pressures. For npA β 40 fibrils, the average packing efficiency increased from $66.3 \pm 0.8\%$ at 1 bar to $67.2 \pm 0.7\%$ at 2,000 bar, a small rise of $\sim 1.2\%$ (Fig. 5d). On the other hand, the packing efficiency of pS8A β 40 fibrils increased from $65.6 \pm 0.7\%$ at 1 bar to $67.1 \pm 0.7\%$ at 2,000 bar, an increase of 2.3%, which was twice the corresponding value for

npA β 40 fibrils. Unlike npA β 40 fibrils, in which the increase in packing efficiency was more prominent in the N-terminal region, the packing efficiency of pS8A β 40 was enhanced nearly uniformly over the A β molecule (Fig. 5d).

As an added mechanism, the ionic interaction between the side chains of H6 and pS8 in phosphorylated A β fibrils may contribute to the higher compressibility of pS8A β 40 fibrils, since breakage of intramolecular electrostatic interactions and resultant electrostriction of solvent molecules by separated charges could decrease the volume of the system without monomer release²⁹. We therefore investigated how high pressure altered the distance between neighbouring charges around the phosphorylation site. In line with the increase in packing efficiency at high pressure, the distance between R5 and D7 side chains decreased in both npA β 40 and pS8A β 40 fibrils. On the other hand, while the distance between H6 and (p)S8 side chains remained intact in npA β 40, it was increased by approximately 8–9% in pS8A β 40. The relative charge separation induced in pS8A β 40 fibrils therefore enables the solvent electrostriction effect to further reduce the system volume at high pressure.

Stability of A β aggregates against SDS-induced dissociation. To further investigate the stability of phosphorylated A β assemblies, soluble and insoluble assemblies of pS8A β and npA β were separated by ultracentrifugation after different time points of aggregation and subjected to denaturing SDS–PAGE followed by western blotting. In the soluble fractions, only monomeric and dimeric A β 40 was observed indicating that soluble oligomers of both npA β and pS8A β were dissociated under denaturing SDS–

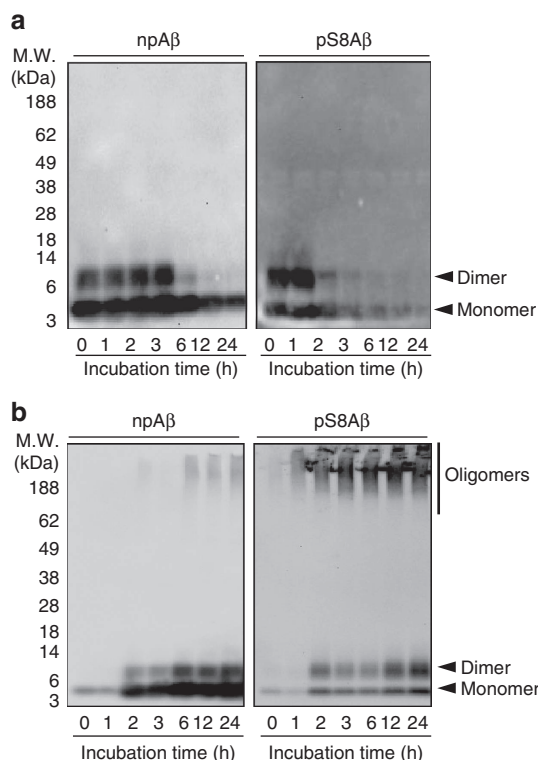


Figure 6 | Phosphorylation of A β at serine 8 enhances the stability of A β oligomers. (a) SDS-PAGE of the soluble fraction of aggregated npA β and pS8A β . All soluble oligomers were dissociated under denaturing SDS-PAGE condition and only monomeric and dimeric A β was detected. The disappearance of monomeric/dimeric A β occurred more quickly for pS8A β than for npA β , consistent with the higher rate of insoluble A β aggregation in case of pS8A β . (b) SDS-PAGE of the insoluble fraction of aggregated npA β and pS8A β samples demonstrates that high-molecular-weight oligomers of pS8A β are more resistant against SDS-induced dissociation.

PAGE conditions (Fig. 6a). In contrast, the insoluble aggregates of pS8A β and npA β showed different stability against SDS-induced dissociation (Fig. 6b; Supplementary Fig. 6). Only very little SDS-resistant oligomeric forms were detected for npA β , even in samples taken after 12 and 24 h of incubation when robust amounts of ThT-reactive aggregates were present (Supplementary Fig. 7). In contrast, the insoluble assemblies of pS8A β were more stable in SDS-PAGE. High-molecular-weight oligomeric bands were observed and the intensity of the monomeric and dimeric bands was decreased in S8-phosphorylated A β 40. Whether these SDS-stable assemblies of pS8A β represent the intermediate oligomeric species populated over the course of aggregation remains, however, to be elucidated.

A β 42 aggregates are more stable than A β 40 aggregates. Between the two abundant variants of A β found in human brains, A β 42 has a stronger aggregation propensity than A β 40 *in vitro* and *in vivo*, and is more toxic in a variety of animal models of AD³⁴. To examine whether the distinct aggregation and toxicity behaviour of A β 42 is accompanied by differences in the stability of A β 42 aggregates, we performed high-pressure NMR measurements for A β 42 aggregates. After 21 h of incubation at 2,000 bar, the NMR signal intensity reached \sim 31% of the initial (monomeric) signal intensity, which is by a factor of two smaller than the value of 63% observed for A β 40 (Fig. 1c; Supplementary Table 1). Consistent with the kinetic data for A β 40 fibrils, the kinetics of monomer release from A β 42 aggregates

was more suitably described by the two-step model. Analysis of the calculated kinetic parameters revealed that the first step, which involves the reversible conversion of the preformed A β aggregates to an intermediate aggregate state was slowed down in A β 42 when compared with A β 40. In addition, the off-rate of monomer release from the intermediate A β aggregates was reduced, while the rate of monomer association to the intermediate aggregates was increased (Fig. 3b). Taken together the data reveal that A β 42 aggregates are thermodynamically and kinetically more stable than A β 40 aggregates.

Discussion

Phosphorylation of aggregated proteins is the pathological hallmark of a wide variety of neurodegenerative diseases⁴. It affects conformational stability of globular proteins and influences the self- and hetero-association of both globular and intrinsically disordered proteins^{4,35}. Phosphorylation of A β at S26 blocks amyloid fibrillation³⁶. In contrast, phosphorylation of A β at serine 8 drastically increases the rate and amount of A β oligomerization and amyloid fibril formation²². Here we demonstrated that A β aggregates phosphorylated at serine 8 are more resistant against high-pressure and SDS-induced dissociation than non-phosphorylated aggregates (Figs 1 and 6). A quantitative analysis of pressure-induced monomer release showed that A β 40 aggregates phosphorylated at serine 8 have higher thermodynamic ($k_{\text{on,app}}/k_{\text{off}}$) and kinetic ($1/k_{\text{off}}$) stability than their non-phosphorylated counterparts (Fig. 3). The combination of faster aggregation and higher concentration of oligomeric aggregates results in a higher toxicity of A β phosphorylated at serine 8 (ref. 22).

Several lines of evidence attribute an important role for aggregation of A β to its N-terminal region^{37–40}. The results from our MD simulation suggested that the high capacity of phosphate groups to act both as the donor and acceptor of hydrogen bonds can lead to the formation of a rich network of hydrogen bonds in the N-terminal region and significantly diminishes backbone dynamics in phosphorylated A β aggregates (Fig. 5). To accommodate the bulky phosphate group and maximize the number of stabilizing hydrogen bonds and electrostatic interactions around the phosphoserine, a more extended conformation is induced in the vicinity of the phosphorylation site. We propose that this more extended conformation of the N-terminal region of A β may form the structural basis for the enhanced stability of phosphorylated A β oligomers. This is in agreement with a recent report showing that the disruption of local extended conformation through S8P mutagenesis leads to selective destabilization of A β oligomers³⁷.

Pressure-induced dissociation of protein aggregates is governed by volume change on monomer release. Our experimental data demonstrated a volume change of \sim 23 $\mu\text{l mol}^{-1}$ for npA β 40, which corresponds roughly to \sim 40 \AA^3 per each A β molecule (Fig. 4). The corresponding value for pS8A β 40 was only 8 $\mu\text{l mol}^{-1}$. MD simulations suggested that the lower volume change on pS8A β 40 monomer release was caused by the higher compressibility of pS8A β 40 fibrils, which might be attributed to its lower degree of compaction. Another contribution to the higher compressibility of pS8A β 40 fibrils could potentially arise from the intramolecular ionic interaction between the side chain of pS8 and H6, which is partially disrupted at high pressure and, because of the electrostriction of solvent molecules by separated charges, could lead to a volume decrease without A β monomer release²⁹.

Despite only two additional residues at the C terminus, A β 42 displays aggregation and toxicity properties that strongly exceed those of A β 40 (ref. 34). In addition, A β 42 and A β 40 follow different aggregation pathways⁴¹ and populate distinct oligomeric and fibrillar states^{42,43}. Using high-pressure NMR we here

showed that aggregates of A β 42 are kinetically and thermodynamically more stable than those of A β 40 (Fig. 3b). In particular, the smaller off-rate of A β 42 assemblies indicates that the lifetime of these potentially toxic A β aggregates is significantly prolonged and might be an important factor that contributes to the toxic role of A β 42 in AD. Further studies are required to explain the structural basis of the enhanced stability of A β 42 assemblies.

A key step in the prion-like spreading of neurodegenerative pathology is the seeding of soluble protein by previously formed and transmitted protein aggregates⁴⁴. As shown for the yeast prion protein, seed generation is controlled by the rate at which amyloid fibrils fragment, which is in turn governed by their stability¹⁵. Because aggregation seeds have to be transmitted to the next cell and different brain areas, the efficiency of spreading relies on the stability of aggregation seeds. In case of A β , it is known that multiple states of A β assemblies are capable of inducing amyloid aggregation *in vivo*, suggesting that small soluble A β seeds are potent mediators of the spreading of extracellular β -amyloidosis in AD⁴⁵. Our data demonstrate that phosphorylation enhances the stability of A β assemblies (Figs 1, 3 and 6). In addition, the dissociation rate of monomeric A β from phosphorylated A β aggregates is reduced, which prolongs the lifetime of phosphorylated A β assemblies. Because pS8A β assemblies can cross-seed the aggregation of non-phosphorylated A β (ref. 22), the prolonged lifetime of S8-phosphorylated A β aggregates might increase spreading of AD pathology.

In summary, our study demonstrates that phosphorylation of A β at serine 8 enhances the stability and prolongs the lifetime of A β aggregates. Serine 8 is located in the N-terminal region of A β and therefore likely to be exposed in amyloid deposits and thus available to the enzymatic machinery of phosphorylation. Importantly, our work indicates that phosphorylation changes the molecular properties of protein aggregates even after they are formed. Phosphorylation and potentially other post-translational modifications can thus modulate aggregate-induced toxicity in the human brain.

Methods

Materials. A β 40 and A β 42, as well as A β 40 phosphorylated at serine 8 (pS8A β) were obtained from Peptide Specialty Laboratory (Germany) and used without further purification. The A β 40 variant S8D (S8DA β) was purchased from EZBiolab (USA). The monoclonal A β antibody 82E1 was obtained from IBL Corporation (Japan). Unless stated otherwise, A β stock solutions were prepared by dissolving peptide powders in 10 mM NaOH at a concentration of 2 mg ml⁻¹ (~460 μ M), then flash freezing the aliquots of A β stock solutions in liquid nitrogen and storing them at -80 °C until further use. Stock solutions of A β 42 were prepared by a two-step solubilization method⁴⁶.

PAGE and western blotting. npA β and pS8A β (50 μ M, pH 7.4 buffered with 20 mM sodium phosphate containing 50 mM sodium chloride) were incubated at 37 °C with gentle stirring. Aliquots of samples collected at different time points were centrifuged at 100,000g for 30 min to separate the soluble A β species in the supernatant from insoluble A β assemblies in the pellet. The supernatant and pellets were subjected to native-PAGE or denaturing SDS-PAGE and A β was detected by western blotting. The samples were mixed with an equal volume of 4 \times SDS sample buffer and then boiled at 100 °C for 5 min. The samples were electro-phoresed on 4–12% Bis-Tris gels (Novex, San Diego, CA, USA) and then transferred onto 0.2- μ m nitrocellulose membrane (Whatmann GmbH, Germany) at 400 mA for 2 h at 4 °C. After 2 h, membranes were washed in TBS-T and incubated overnight with the primary antibody 82E1 in 0.5 μ g ml⁻¹ TBS-T solution at 4 °C. The bound antibody was detected using horseradish peroxidase-conjugated anti-mouse IgG (1:50,000; Sigma) using enhanced chemiluminescence (ECL reagent, GE Healthcare) with an ECL imager (BioRad Inc.).

Electron microscopy. npA β , pS8A β and S8DA β samples of 0.2 mg ml⁻¹ (~50 μ M) concentration in HEPES buffer (25 mM, pH 7.4, 50 mM NaCl) were incubated at 37 °C with gentle stirring. After 48 h of incubation, samples were diluted, deposited onto carbon-coated copper mesh grids and negatively stained with 2% (w/v) uranyl acetate. Excess stain was washed away, and the sample grids were allowed to air dry. Samples were examined using a Philips CM 120 BioTwin

transmission electron microscope (Philips Inc., Eindhoven, The Netherlands). The apparent diameter (largest width) of negatively stained A β fibrils were measured using the ITEM software (Olympus Soft Imaging Solutions, Münster, Germany) and the size distribution of npA β and pS8A β fibrils was determined after manual measurement of >300 fibrils per peptide variant.

To investigate the effect of high pressure on A β fibrils, npA β and pS8A β samples of 0.25 mg ml⁻¹ (~60 μ M) concentration in phosphate buffer (50 mM, pH 7.4, 50 mM NaCl) were incubated in aggregation-prone condition (37 °C, with gentle stirring) for 96 h. Before and after application of high hydrostatic pressure (2,000 bar, 18 h) during which the pressure-induced A β monomer release was monitored, A β samples were taken for the EM examination. The EM images were obtained as described above.

High-pressure NMR experiments. npA β 40, pS8A β 40, S8DA β 40 and A β 42 samples of 0.25 mg ml⁻¹ (~60 μ M) concentration in phosphate buffer (50 mM, pH 7.4, 50 mM NaCl, 100 μ M DSS, 10% D₂O) were incubated in aggregation-prone condition (37 °C, with gentle stirring). After the 96 h of incubation, the aggregated A β samples were transferred without further fractionation to high-pressure NMR tubes and subjected to hydrostatic pressures up to 2,000 bar (Daedalus Innovations LLC, PA) and low temperature (273 K). NMR experiments were performed on a 700 MHz Bruker spectrometer (Germany). At each pressure, A β samples were first incubated for 20 min, then three consecutive 1D proton experiments each taking 10 min were recorded, before raising the pressure to the next higher level. The amount of A β monomer released as a function of the applied pressure was estimated through proton signal intensities in the methyl region, normalized by the intensity of an internal DSS signal. For the kinetics of pressure-induced A β monomer release from aggregates, the aggregated A β samples were directly subjected to the highest pressure, that is, 2,000 bar, and 1D proton NMR spectra were measured for 18 h at 30-min intervals. The time-dependent relative intensity data (I) were fitted to mono- and bi-exponential equations:

$$I = I_{\infty} + A_1 \cdot e^{-Rt} \quad (1)$$

$$I = I_{\infty} + A_1 \cdot e^{-R_1 t} + A_2 \cdot e^{-R_2 t} \quad (2)$$

Assuming a simple model for the conversion between NMR-invisible A β assemblies (A) and monomers (M):



in which both the forward dissociation and backward association reactions obey first-order kinetics governed by the rate constants k_{off} and k_{on} . The fitting parameters derived from the monoexponential equation (equation (1)) were interpreted as:

$$I_{\infty} = \frac{k_{\text{off}}}{k_{\text{off}} + k_{\text{on}}} \quad (4)$$

$$R = k_{\text{off}} + k_{\text{on}} \quad (5)$$

and apparent values of k_{off} and k_{on} were derived accordingly. The assumption of (pseudo) first-order kinetics for the reverse reaction in equation (3) is reasonably justified noting that the number of growing ends in A β aggregates does not change during dissociation-association reaction. The fitting parameters, which were derived from the bi-exponential model (equation (2)), were interpreted according to the following model:



which involves reversible conversion of A β assemblies to an intermediate state (I) before the reversible monomer dissociation-association reaction occurs. An in-house Mathematica 8.0 (Wolfram Research, Inc.) script was used for data fitting.

To obtain the change in volume on A β monomer release from aggregates, the npA β 40 and pS8A β 40 samples (0.25 mg ml⁻¹ in 50 mM phosphate, pH 7.4, 50 mM NaCl, 100 μ M DSS, 10% D₂O) were incubated in aggregation-prone conditions (37 °C, with gentle stirring) for 96 h. Subsequently, they were transferred to high-pressure NMR tubes and incubated for 48 h at different pressure levels (500, 1,000, 1,500 and 2,000 bar) and 273 K. The 1D NMR proton spectra were recorded before aggregation (day 0), after aggregation (day 4) and after 48-h application of high pressure to A β aggregates. A β monomer levels were quantified as described above, the equilibrium constants between A β aggregates and monomers ($K \equiv \frac{k_{\text{off}}}{k_{\text{on}}}$) were calculated according to equation (3) and then converted to free-energy change on A β monomer release from aggregates (ΔG):

$$\Delta G = -RT \ln K \quad (7)$$

in which R is the ideal gas constant and T is (absolute) temperature. Assuming that the pressure dependence of free-energy change is governed by the following linear relation,

$$\Delta G_p = \Delta G_{p_0} + \Delta V \cdot (P - P_0) \quad (8)$$

the (apparent) volume change on A β monomer release from aggregates (ΔV) was estimated from the slope of the fitted ΔG versus pressure line.

MD simulation. MD simulations were performed using the GROMACS simulation package, version 4.6.5 (ref. 47). The Amber99sb force field parameters were used as implemented in GROMACS⁴⁸. The initial protein model was based on a solid-state NMR structure of A β 40 fibrils (PDB code: 2M4J (ref. 33)). This protein database (PDB) structure contains three layers of a threefold symmetric repeat unit

each constituted by three A β molecules. Taking the lowest-energy model of this PDB entry, three models were built for the unmodified, S8-phosphorylated and S8D-A β 40 fibrils. To reduce the contribution of end effects in the final results, each model was elongated by adding new layers in the direction of the fibrillar axis. The final models were 21-layered structures of A β 40 fibrils, composed of a total of 63 polypeptide chains. Each fibril model was solvated in a cubic box of dimension $11 \times 11 \times 11 \text{ nm}^3$ with TIP4P-Ew water molecules and neutralized by adding monovalent ions. To remove atomic clashes, each solvated and neutralized model was then subjected to energy minimization using the steepest descent algorithm until the maximum force on atoms was reduced to values smaller than $1,000 \text{ kJ mol}^{-1} \text{ nm}^{-1}$. After energy minimization, short-length position-restrained NVT and position-restrained NPT simulations (1 ns) at 300 K were applied to set atomic velocities and adjust densities. After equilibration, the production MD simulations were performed for each model at constant temperature (300 K) and pressure (1 bar) over a 75-ns period. The LINCS algorithm was used to constrain the bonds. Lennard-Jones and short-range electrostatic interaction cutoff radii of 1 nm were used. Coulomb interactions at longer distances were calculated by the Particle Mesh Ewald algorithm. The protein fibril and water molecules plus ions were coupled separately to a thermal bath using the velocity rescale algorithm (modified Berendsen thermostat) with $\tau_T = 0.1 \text{ ps}$ at 300 K (refs 49,50). The isotropic pressure coupling was used to keep the pressure at desired values by applying the Berendsen algorithm with $\tau_p = 2.0 \text{ ps}$ and a compressibility of $4.5 \times 10^{-5} \text{ bar}^{-1}$ (ref. 50). The neighbour lists were updated every five steps and a time step of 2 fs was chosen for integration. Hydrogen bonds were calculated using the angle and distance cutoff values of 30° and 0.35 nm, respectively.

To evaluate the impact of high pressure on A β fibrils, two additional 75-ns MD simulations were performed on unmodified and S8-phosphorylated A β 40 fibrils using the same set-up as mentioned above except of pressure and temperature which were set to 2,000 bar and 273 K in accordance with the experimental condition of our high-pressure NMR experiments. Packing efficiencies were then calculated as the ratio of the van der Waals volume to the Voronoi volume over the last 25 ns of MD trajectories, using the computational tool of *trjVoronoi* (ref. 51). Details on ThT binding assays are provided in Supplementary Methods.

References

- Knowles, T. P., Vendruscolo, M. & Dobson, C. M. The amyloid state and its association with protein misfolding diseases. *Nat. Rev. Mol. Cell Biol.* **15**, 384–396 (2014).
- Schmid, A. W., Fauvet, B., Moniatte, M. & Lashuel, H. A. Alpha-synuclein post-translational modifications as potential biomarkers for Parkinson disease and other synucleinopathies. *Mol. Cell. Proteomics* **12**, 3543–3558 (2013).
- Russell, C. L., Koncarevic, S. & Ward, M. A. Post-translational modifications in Alzheimer's disease and the potential for new biomarkers. *J. Alzheimers Dis.* **41**, 345–364 (2014).
- Tenreiro, S., Eckermann, K. & Outeiro, T. F. Protein phosphorylation in neurodegeneration: friend or foe? *Front. Mol. Neurosci.* **7**, 42 (2014).
- McFarland, M. A., Ellis, C. E., Markey, S. P. & Nussbaum, R. L. Proteomics analysis identifies phosphorylation-dependent alpha-synuclein protein interactions. *Mol. Cell. Proteomics* **7**, 2123–2137 (2008).
- Paleologou, K. E. *et al.* Phosphorylation at S87 is enhanced in synucleinopathies, inhibits alpha-synuclein oligomerization, and influences synuclein-membrane interactions. *J. Neurosci.* **30**, 3184–3198 (2010).
- Oueslati, A., Schneider, B. L., Aebischer, P. & Lashuel, H. A. Polo-like kinase 2 regulates selective autophagic alpha-synuclein clearance and suppresses its toxicity *in vivo*. *Proc. Natl Acad. Sci. USA* **110**, E3945–E3954 (2013).
- Goncalves, S. & Outeiro, T. F. Assessing the subcellular dynamics of alpha-synuclein using photoactivation microscopy. *Mol. Neurobiol.* **47**, 1081–1092 (2013).
- Tenreiro, S. *et al.* Phosphorylation modulates clearance of alpha-synuclein inclusions in a yeast model of Parkinson's disease. *PLoS Genet.* **10**, e1004302 (2014).
- Mahul-Mellier, A. L. *et al.* c-Abl phosphorylates alpha-synuclein and regulates its degradation: implication for alpha-synuclein clearance and contribution to the pathogenesis of Parkinson's disease. *Hum. Mol. Genet.* **23**, 2858–2879 (2014).
- Meersman, F. & Dobson, C. M. Probing the pressure-temperature stability of amyloid fibrils provides new insights into their molecular properties. *Biochim. Biophys. Acta* **1764**, 452–460 (2006).
- Gazit, E. The "Correctly Folded" state of proteins: is it a metastable state? *Angew. Chem. Int. Ed.* **41**, 257–259 (2002).
- Knowles, T. P. *et al.* Role of intermolecular forces in defining material properties of protein nanofibrils. *Science* **318**, 1900–1903 (2007).
- Knowles, T. P. & Buehler, M. J. Nanomechanics of functional and pathological amyloid materials. *Nat. Nanotechnol.* **6**, 469–479 (2011).
- Tanaka, M., Collins, S. R., Toyama, B. H. & Weissman, J. S. The physical basis of how prion conformations determine strain phenotypes. *Nature* **442**, 585–589 (2006).
- Dirix, C., Meersman, F., MacPhee, C. E., Dobson, C. M. & Heremans, K. High hydrostatic pressure dissociates early aggregates of TTR105–115, but not the mature amyloid fibrils. *J. Mol. Biol.* **347**, 903–909 (2005).
- Relini, A. *et al.* Detection of populations of amyloid-like protofibrils with different physical properties. *Biophys. J.* **98**, 1277–1284 (2010).
- Tanzi, R. E. The genetics of Alzheimer disease. *Cold Spring Harb. Perspect. Med.* **2**, a006296 (2012).
- Kumar, S. & Walter, J. Phosphorylation of amyloid beta (Abeta) peptides—a trigger for formation of toxic aggregates in Alzheimer's disease. *Aging* **3**, 803–812 (2011).
- Kummer, M. P. *et al.* Nitration of tyrosine 10 critically enhances amyloid beta aggregation and plaque formation. *Neuron* **71**, 833–844 (2011).
- Schilling, S. *et al.* Glutaminyl cyclase inhibition attenuates pyroglutamate Abeta and Alzheimer's disease-like pathology. *Nat. Med.* **14**, 1106–1111 (2008).
- Kumar, S. *et al.* Extracellular phosphorylation of the amyloid beta-peptide promotes formation of toxic aggregates during the pathogenesis of Alzheimer's disease. *EMBO J.* **30**, 2255–2265 (2011).
- Rijal Upadhaya, A. *et al.* Biochemical stages of amyloid-beta peptide aggregation and accumulation in the human brain and their association with symptomatic and pathologically preclinical Alzheimer's disease. *Brain* **137**, 887–903 (2014).
- Kumar, S. *et al.* Phosphorylation of amyloid-beta peptide at serine 8 attenuates its clearance via insulin-degrading and angiotensin-converting enzymes. *J. Biol. Chem.* **287**, 8641–8651 (2012).
- Mishra, R. & Winter, R. Cold- and pressure-induced dissociation of protein aggregates and amyloid fibrils. *Angew. Chem. Int. Ed.* **47**, 6518–6521 (2008).
- Silva, J. L., Foguel, D. & Royer, C. A. Pressure provides new insights into protein folding, dynamics and structure. *Trends Biochem. Sci.* **26**, 612–618 (2001).
- Nucci, N. V., Fuglestad, B., Athanasoula, E. A. & Wand, A. J. Role of cavities and hydration in the pressure unfolding of T4 lysozyme. *Proc. Natl Acad. Sci. USA* **111**, 13846–13851 (2014).
- Akasaka, K. *et al.* Amyloid protofibril is highly voluminous and compressible. *Biochemistry* **46**, 10444–10450 (2007).
- Urbauer, J. L., Ehrhardt, M. R., Bieber, R. J., Flynn, P. F. & Wand, A. J. High-resolution triple-resonance NMR spectroscopy of a novel calmodulin peptide complex at kilobar pressures. *J. Am. Chem. Soc.* **118**, 11329–11330 (1996).
- Gruning, C. S. *et al.* The off-rate of monomers dissociating from amyloid-beta protofibrils. *J. Biol. Chem.* **288**, 37104–37111 (2013).
- Carulla, N. *et al.* Molecular recycling within amyloid fibrils. *Nature* **436**, 554–558 (2005).
- Petkova, A. T. *et al.* Self-propagating, molecular-level polymorphism in Alzheimer's beta-amyloid fibrils. *Science* **307**, 262–265 (2005).
- Lu, J. X. *et al.* Molecular structure of beta-amyloid fibrils in Alzheimer's disease brain tissue. *Cell* **154**, 1257–1268 (2013).
- Younkin, S. G. Evidence that A beta 42 is the real culprit in Alzheimer's disease. *Ann. Neurol.* **37**, 287–288 (1995).
- Nishi, H., Hashimoto, K. & Panchenko, A. R. Phosphorylation in protein-protein binding: effect on stability and function. *Structure* **19**, 1807–1815 (2011).
- Rezaei-Ghaleh, N. *et al.* Turn plasticity distinguishes different modes of amyloid-beta aggregation. *J. Am. Chem. Soc.* **136**, 4913–4919 (2014).
- Haupt, C. *et al.* Structural basis of beta-amyloid-dependent synaptic dysfunctions. *Angew. Chem. Int. Ed.* **51**, 1576–1579 (2012).
- Gardberg, A. S. *et al.* Molecular basis for passive immunotherapy of Alzheimer's disease. *Proc. Natl Acad. Sci. USA* **104**, 15659–15664 (2007).
- Di Fede, G. *et al.* A recessive mutation in the APP gene with dominant-negative effect on amyloidogenesis. *Science* **323**, 1473–1477 (2009).
- Ono, K., Condron, M. M. & Teplow, D. B. Effects of the English (H6R) and Tottori (D7N) familial Alzheimer disease mutations on amyloid beta-protein assembly and toxicity. *J. Biol. Chem.* **285**, 23186–23197 (2010).
- Bitan, G. *et al.* Amyloid beta -protein (Abeta) assembly: Abeta 40 and Abeta 42 oligomerize through distinct pathways. *Proc. Natl Acad. Sci. USA* **100**, 330–335 (2003).
- Parthasarathy, S. *et al.* Structural Insight into an Alzheimer's Brain-Derived Spherical Assembly of Amyloid beta by Solid-State NMR. *J. Am. Chem. Soc.* **137**, 6480–6483 (2015).
- Xiao, Y. *et al.* Abeta(1-42) fibril structure illuminates self-recognition and replication of amyloid in Alzheimer's disease. *Nat. Struct. Mol. Biol.* **22**, 499–505 (2015).
- Bretschneider, J., Del Tredici, K., Lee, V. M. & Trojanowski, J. Q. Spreading of pathology in neurodegenerative diseases: a focus on human studies. *Nat. Rev. Neurosci.* **16**, 109–120 (2015).
- Langer, F. *et al.* Soluble Abeta seeds are potent inducers of cerebral beta-amyloid deposition. *J. Neurosci.* **31**, 14488–14495 (2011).
- Bouter, Y. *et al.* N-truncated amyloid beta (Abeta) 4-42 forms stable aggregates and induces acute and long-lasting behavioral deficits. *Acta Neuropathol.* **126**, 189–205 (2013).

47. Berendsen, H. J. C., Vandespoel, D. & Vandrunen, R. Gromacs—a Message-Passing Parallel Molecular-Dynamics Implementation. *Comput. Phys. Commun.* **91**, 43–56 (1995).
48. Hornak, V. *et al.* Comparison of multiple amber force fields and development of improved protein backbone parameters. *Proteins* **65**, 712–725 (2006).
49. Bussi, G., Donadio, D. & Parrinello, M. Canonical sampling through velocity rescaling. *J. Chem. Phys.* **126**, 014101 (2007).
50. Berendsen, H. J. C., Postma, J. P. M., Vangunsteren, W. F., Dinola, A. & Haak, J. R. Molecular-dynamics with coupling to an external bath. *J. Chem. Phys.* **81**, 3684–3690 (1984).
51. Abel, S., Dupradeau, F. Y. & Marchi, M. Molecular dynamics simulations of a characteristic DPC micelle in water. *J. Chem. Theory Comput.* **8**, 4610–4623 (2012).

Acknowledgements

We thank Dr Dietmar Riedel and Gudrun Heim for electron microscopy and for help with the analysis of EM images.

Author contributions

N.R.-G. designed, performed and analysed high-pressure NMR experiments, contributed to MD simulation and analysis, performed size distribution analysis in TEM and wrote the manuscript; M.A. performed MD simulation and analysis; S.K. and J.W. performed

PAGE experiments; J.W. and M.Z. conceived the project; M.Z. supervised the project and wrote the manuscript.

Additional information

Supplementary Information accompanies this paper at <http://www.nature.com/naturecommunications>

Competing financial interests: The authors declare no competing financial interests.

Reprints and permission information is available online at <http://npg.nature.com/reprintsandpermissions/>

How to cite this article: Rezaei-Ghaleh, N. *et al.* Phosphorylation modifies the molecular stability of β -amyloid deposits. *Nat. Commun.* **7**:11359 doi: 10.1038/ncomms11359 (2016).



This work is licensed under a Creative Commons Attribution 4.0 International License. The images or other third party material in this article are included in the article's Creative Commons license, unless indicated otherwise in the credit line; if the material is not included under the Creative Commons license, users will need to obtain permission from the license holder to reproduce the material. To view a copy of this license, visit <http://creativecommons.org/licenses/by/4.0/>