



Published in final edited form as:

Exp Eye Res. 2016 April ; 145: 230–234. doi:10.1016/j.exer.2015.12.009.

Human Conjunctival Goblet Cells Express the Membrane Associated Mucin MUC16: Localization to mucin granules

Ilene K Gipson, Sandra Spurr-Michaud, and Ann Tisdale

Schepens Eye Research Institute of Massachusetts Eye and Ear, Department of Ophthalmology, Harvard Medical School, Boston MA

Abstract

MUC16 is an extraordinarily large 22,152 amino acid membrane spanning mucin that has been shown to be present in the glycocalyx of the apical cells of the human cornea and conjunctiva where it interfaces with the tear film. The ectodomain of the molecule has been demonstrated in tears, where it has been presumed to be from surface epithelial cells. Data presented here from multiple assays, including immunohistochemistry, immunoelectron microscopy, *in situ* hybridization, and RT-PCR of RNA isolated from goblet cells isolated by laser capture microdissection, demonstrate that the membrane tethered mucin is also expressed by conjunctival goblet cells both in humans and in mice. The mucin is present in mucin granules and appears to be localized to the mucin granule membrane. Correlation analyses of the amounts of the goblet cell secreted mucin MUC5AC and the amounts of MUC16 and of MUC1 another membrane tethered mucin ectodomain found in human tear samples demonstrated that MUC5AC amounts correlated to the amounts of MUC16 but not to MUC1. These data suggest that goblet cells are a second source of the mucin in tears. The function of the membrane tethered mucin in the mucin granule remains to be determined.

It is well known that goblet cells of the human conjunctiva express and secrete the mucin MUC5AC (Inatomi et al., 1996). This large secretory mucin is packaged within mucin granules that are enveloped by a membrane. In humans, apical cells of the stratified conjunctival and corneal epithelium produce several of a second class of mucins, the membrane spanning or membrane associated mucins. Specifically, the conjunctival epithelium expresses MUC4, MUC16 and in a lesser amount, MUC1 and in central corneal epithelium the predominant membrane mucin is MUC16, with lesser amounts of MUC1 (Gipson and Argueso, 2003). MUC16 is an exceptionally large glycoprotein. At 22,152 amino acids it is the largest of the 19 human mucins. The ectodomain of MUC16 comprises far and away the majority of the molecule, has a series of tandem repeats and is heavily o-glycosylated, particularly in the amino terminal half. It has a short transmembrane domain and cytoplasmic tail of 32 amino acids. (For review of MUC16 structure see Haridas et al

Corresponding author: Ilene K. Gipson; Schepens Eye Research Institute, 20 Staniford Street, Boston, MA 02114; Ilene_gipson@meei.harvard.edu; Tel: 617-912-0210; Fax: (N/A).

Publisher's Disclaimer: This is a PDF file of an unedited manuscript that has been accepted for publication. As a service to our customers we are providing this early version of the manuscript. The manuscript will undergo copyediting, typesetting, and review of the resulting proof before it is published in its final citable form. Please note that during the production process errors may be discovered which could affect the content, and all legal disclaimers that apply to the journal pertain.

(Haridas et al., 2014), and Govindarajan and Gipson (Govindarajan and Gipson, 2010)). An antibody, termed H185, specific to a glycan on MUC16 (Argueso et al., 2003) was found by immunoelectron microscopy to bind microplacae on the surface of human corneal and conjunctival epithelium, but the antibody was also found to bind to goblet cell mucin packets in human conjunctival epithelium obtained by impression cytology (Danjo et al., 1998). The binding of the antibody to mucin packets in goblet cells, did not rule out the possibility that the antibody was recognizing a similar glycan epitope on another glycoprotein, thus presence of MUC16 in the goblet cell could not be assured from that data.

In the mouse, conjunctival goblet cells express the mouse homologue of MUC5AC, Muc5Ac, and homologue to MUC16, Muc16, which is a much smaller mucin than its human homologue. A recent subtractive microarray analysis of RNA from mouse conjunctival epithelium of mice null for the transcription factor *Spdef* which lack goblet cells compared to that of wild type mice, demonstrated a highly significant downregulation of Muc16 (RIKEN cDNA 1110008I14) in the *Spdef* null mice (supplemental data Marko et al) (Marko et al., 2013). These data suggested that Muc16 might be a goblet cell product in the mouse. The data on binding of human H185 antibody to human goblet cells (Danjo et al., 1998) and the mouse data demonstrating downregulation of Muc16 in conjunctiva lacking goblet cells, led us to hypothesize that conjunctival goblet cells produce the mucin MUC16. We report here, that data from several techniques, including immunohistochemical and immunoelectron microscopy using multiple antibodies specific to MUC16, *in situ* hybridization using MUC16 tandem repeat primers, and RT-PCR of laser captured goblet cell RNA conclusively demonstrate that MUC16 is produced by human and mouse conjunctival goblet cells. Subsequently studies were done to determine if the amount of MUC16 in tears correlates to that of the goblet cell mucin MUC5AC present in tears.

Acquisition of human and mouse tissues was done in compliance with Institutional Review Board regulations, informed consent regulations, the tenets of the Declaration of Helsinki and the Schepens Eye Research Institutional Animal Care and Use Committee. Human conjunctival tissues used were those obtained for previous studies (Inatomi et al., 1996), (Danjo et al., 1998), (Kunert et al., 2002). Human tear samples used were obtained for previous studies as reported in Gipson et. al. (Gipson et al., 2011).

Immunohistochemical and immunoelectron microscopy analyses were done to localize MUC16 in human conjunctival tissue and on impression cytology samples. To immunohistochemically localize MUC16 either of two monoclonal antibodies both specific to the SEA Module domain (Marcos-Silva et al., 2014), OC125 (Dako Corp., Carpenter, CA) and M11 (NeoMarkers, Fremont, CA), were applied (1:50 dilution in PBS for OC125 and 1:500 in PBS for M11) to frozen sections of conjunctiva (N=6 tissue samples for each antibody) as previously described (Argueso et al., 2003). Post-embedding immunoelectron microscopy using the monoclonal antibody H185, which recognizes a carbohydrate epitope on MUC16 (Argueso et al., 2003; Argueso and Sumiyoshi, 2006), or monoclonal antibody OC125 was done on LRWhite embedded conjunctival impression cytology samples (N=10) as previously described (Blalock et al., 2007; Danjo et al., 1998).

In situ hybridization analysis was done using S³⁵ labeled riboprobes on paraffin sections of human conjunctiva (N=4 tissue samples) using the methods previously described for in situ hybridization of message to MUC5AC (Inatomi et al., 1996). Sections were hybridized with riboprobes overnight at 37°C and post hybridization washes were at 37°C. The antisense and sense riboprobes to a tandem repeat region of the MUC16 ectodomain were the same as those employed for fluorescence in situ hybridization in human corneal epithelium (Argueso et al., 2003). Oligonucleotide probes were labeled with ³⁵S and processed for autoradiography as described (Inatomi et al., 1995, Inatomi et al., 1996). Hybridization of labeled sense and antisense probes was performed at 37°C (Argueso et al., 2003). Posthybridization washes were performed sequentially for 30 minutes at 37°C, twice in 2X Saline-Sodium Citrate buffer (SSC), once in 1X SSC and twice in 0.5 X SSC.

Laser capture microscopy was done to harvest clusters of mouse goblet cells, as well as stratified epithelia from both cornea and conjunctiva of frozen sections of the anterior section of 8–12 week old C57Bl/6-129 mixed background mice (6 males, 4 females), in order to assay each epithelial area for presence of full length Muc16 message. RT-qPCR analysis of Muc16 message was done using both primer sets to the Muc16 ectodomain and to the Muc16 cytoplasmic tail. For the ectodomain primers, a pre-validated primer assay set that amplifies a terminal SEA domain in the extracellular domain (ECD) of Muc16 (Qiagen, Valencia, CA) was used. For the cytoplasmic tail assay, a primer set (Forward: AGGGAGACTACCAAGTTCAACG; Reverse: CTGTAAGTTCCTCAGGTCAGG) was designed to amplify mRNA from the cytoplasmic tail (CT) domain of Muc16 using NCBI Primer-BLAST (www.ncbi.nlm.nih.gov/tools/primer-blast/). NCBI BLASTS of primers and translation of amplicons confirmed specificity of each set of primers. Techniques for laser capture and RT-PCR were as previously reported (Marko et al., 2013). RT-PCR experiments were done twice. The endogenous control gene was 18S RNA and relative levels of the mRNA expression were calculated by the $\Delta\Delta$ CT method using the mean Δ CT of the conjunctival goblet cells as the calibrator.

Correlation of tear fluid amounts of MUC5AC and MUC16 Upon learning that MUC16 was present in human goblet cells, we did Spearman rank correlation analyses (Instat3) of the tear fluid amounts of MUC16, and MUC5AC a secreted goblet cell mucin, as well as with MUC1, another membrane associated mucin present in tears and expressed by stratified epithelium only. Data sets and methods for these analyses were from a previous study of mucins in tears of postmenopausal women with and without dry eye (Gipson et al., 2011).

As demonstrated in Figure A and B, two different monoclonal antibodies, OC125 and M11, both of which recognize SEA modules regions of the protein backbone of the ectodomain of MUC16 (Marcos-Silva et al., 2014) bind to mucin packets of human conjunctival goblet cells. Both antibodies also bind to apical surfaces of the epithelium as have been previously described (Argueso et al., 2003), (Blalock et al., 2007). Immunoelectron microscopic localization of monoclonal antibody H185, which recognizes an o-acetylated sialic acid on MUC16 (Argueso and Sumiyoshi, 2006), to goblet cells obtained by impression cytology demonstrates that MUC16 is present at the periphery of the mucin packets, along the packet membrane (Figure C, D). These data suggest that the membrane mucin is tethered in the mucin packet membrane. Since by light microscopy, the binding of the ectodomain

antibodies appears to be present within the mucin packet (Figure A, B) the cytoplasmic tail of MUC16 would appear to face the cytoplasmic surface on the outside of the packet.

A third method documenting the expression of MUC16 by human conjunctival goblet cells is that of *in situ* hybridization. As shown in Figure E and F, S³⁵ labeled antisense riboprobes bind heavily to goblet cells of the conjunctival epithelium compared to the control sense probes. Binding of the antisense probes also is seen on the stratified cells of the conjunctiva, in keeping with the demonstrated expression of the mucin by these cells (Argueso et al., 2003).

In the mouse, conjunctival goblet cells occur in basket like clusters (Gipson and Tisdale, 1997). To determine if mouse conjunctival epithelial goblet cells express mRNA to Muc16, clusters of goblet cells were isolated by laser capture microscopy and RNA isolated (Figure G). For comparison, stratified conjunctival and corneal epithelium were also cut from the same sections and RNA from these epithelial regions was also isolated (Figure G). Primers for both the ectodomain and the cytoplasmic tail sequence were used by RT-PCR to determine if full length Muc16 message was present in the three epithelial samples (Figure H). Goblet cells expressed full length Muc16 as demonstrated by presence of comparable amounts of expression of extracellular domain and cytoplasmic tail mRNA. Unlike in the human, mouse corneal epithelium showed no expression of Muc16 and conjunctival epithelium showed a negligible amount.

The presence of ectodomain of MUC16 in tear fluid of humans, which we previously reported, (Blalock et al., 2008; Blalock et al., 2007; Spurr-Michaud et al., 2007) was thought to be a result of shedding of MUC16 from the apical surface of the corneal and conjunctival epithelium. Upon determining that MUC16 was produced by goblet cells, we sought to determine if tear levels of the mucin correlated with the goblet cell mucin MUC5AC or with the presence of the ectodomain of another membrane tethered mucin at the ocular surface, MUC1, which is not, as shown by *in situ* hybridization studies, produced by goblet cells (Inatomi et al., 1995). We had previously assayed the amount of MUC5AC, MUC16, and MUC1 in a series of patient with and without dry eye to determine if they correlated with disease (Gipson et al., 2011). Using this data set, we did a correlation test, using Spearman rank correlation in Instat3, between MUC16, MUC1, and MUC5AC and as shown in the table, the amount of MUC16 correlated with the goblet cell mucin MUC5AC, but not with the other membrane associated mucin MUC1. These data suggest that the MUC16 in the tears correlates with goblet cell secretion.

Discussion

Data presented in this report clearly document the expression of MUC16 in human goblet cells and its localization to mucin granules. That the multiple methods used go beyond immunohistochemistry is important in assigning mucin expression/localization, as these heavily glycosylated glycoproteins often bind proteins indiscriminately. Use of multiple antibodies specific to MUC16 at the light and electron microscopic levels, as well as localization of message for the mucin by *in situ* hybridization enhances dramatically the reliability of the finding.

Earlier work suggested the presence of MUC16 in human goblet cells. Demonstration of binding of the monoclonal antibody, H185, by immunoelectron microscopy to conjunctival goblet cell mucin granules (Danjo et al., 1998), and later demonstration that H185 is specific to an o-acetylated sialic acid on MUC16 suggested that MUC16 is present in the goblet cell (Argueso et al., 2003; Argueso and Sumiyoshi, 2006). More recently immunohistochemical localization of the antibodies OC125 and X325 (M11 like) to cultured human tracheal bronchial epithelial goblet cells and human bronchial goblet cells was reported (Kesimer et al., 2013). In the tracheal epithelium, antibodies bound mostly to apical surfaces of the goblet cells in the cultured cells, and localized near the site of expelled secreted mucins. In the native bronchial tissues, the antibodies bound primarily to the goblet cell cytoplasm/mucin packets. These data suggest that goblet cells in several wet surfaced epithelial tissues express MUC16.

Data from this study demonstrate that while there is expression of Muc16 in the mouse conjunctival goblet cell, there is no expression of the mucin by the stratified epithelium of the cornea and conjunctiva (See Figure H). In a study of mouse tissues, Muc16 message was not found using RT-PCR in the eye (Cheon et al., 2009), but the same group did find binding of a polyclonal antibody to recombinantly produced 236 AA mouse Muc16 fragment, to conjunctival goblet cells but not to apical cells of the conjunctival epithelium (Wang et al., 2008). Data provided in Figure H in this manuscript showing message for MUC16 in RNA isolated by laser capture of mouse goblet cells clusters supports the immunohistochemical data cited above and indicates that Muc16 is present in mouse conjunctival goblet cells as well. In a study of ocular surface phenotype of Muc16 null mice, Shirai et al (Shirai et al., 2014) reported that the superficial cells of the conjunctiva produced Muc16. These data differ from data from Wang et al (Wang et al., 2008), and our data and were based on an immunohistochemical assay with a commercial antibody to mouse Muc16 for which no information on the epitope is provided. These differences in reported results of Muc16 expression emphasize the importance of multiple types of assays to verify mucin localization.

Immunoelectron microscopic localization of H185 antibody to MUC16 shows localization of mucin to the region of the mucin granule membrane (Figure C, D). This data along with the data from the mouse demonstrating that message for the cytoplasmic tail is present along with ectodomain message in the mouse goblet cells suggest that the transmembrane mucin is in the mucin granule membrane. The question arises, “What is the orientation within the membrane? Is the cytoplasmic tail on the outside of the granule membrane on the cytoplasmic face? The immunohistochemical data shown in Figure A, B, shows binding of ectodomain specific antibodies within mucin granules suggesting that the ectodomain is within the inside of the granule. The ectodomain of the MUC16 molecule is extremely long at approximately 22,000 amino acids, thus in an extended, fully glycosylated state it could extend 250–300 nanometers (Gniewek and Kolinski, 2012) into a mucin granule which measures approximately 0.8 microns in diameter (Figure C, D).

What is the function MUC16 in the mucin granule? In experiments in which MUC16 was stably knocked down, the functions of MUC16 on the apical surface of human corneal epithelial cells in culture was recently tested (Blalock et al., 2007; Gipson et al., 2014). The

data demonstrated that MUC16 provided barrier function at the epithelial surface. The barrier to rose bengal dye penetration, to pathogen adherence and internalization, and tight junction function was significantly decreased in cells in epithelia in which MUC16 was stably knocked down. These types of barrier functions would not appear to be required of a mucin granule membrane. Other functions for MUC16 that have been proposed for the corneal surface have been ones which facilitate surface wettability, surface lubrication that allows secreted mucins to move across the surface of the eye to clean the surface and prevent eyelid adherence (Govindarajan and Gipson, 2010). Perhaps the presence of MUC16 in mucin granule membranes prevents MUC5AC from adhering to mucin granule membranes thus facilitating rapid expulsion of the secreted mucin onto the surface of the epithelium. In support of this hypothesis, in cells secreting mucins onto the surface of human tracheal bronchial epithelium in culture, MUC16 was shown immunohistochemically to be at the apical surface of the secreting cells as MUC5AC streamed from the surface (Kesimer et al., 2013). Alternatively, MUC16 may be involved in packaging of the MUC5AC within the mucin granule.

The ectodomain of MUC16, lacking its cytoplasmic tail, has been demonstrated to be present in tear fluid (Blalock et al., 2008). Since MUC16 was demonstrated to be expressed by surface epithelial cells and present within the epithelial glycocalyx, the source of the MUC16 ectodomain in the tears has previously been assumed to be mucin shed from the corneal and conjunctival epithelial surface (Blalock et al., 2008). With the demonstrated presence of MUC16 in human goblet cells, and the demonstrated significant correlation of MUC5AC and MUC16 amounts in tears (Table), a second source of the mucin ectodomain in tears must now be considered.

In summary, data presented here definitively demonstrate presence of MUC16 message and protein in human conjunctival goblet cells. Data suggest that the full length MUC16 with its cytoplasmic tail molecule is present in the mucin granule membrane. Future research to determine the function of the membrane tethered mucin in the goblet cell is needed.

Acknowledgments

Funded by NIH NEI EY03306 to IKG

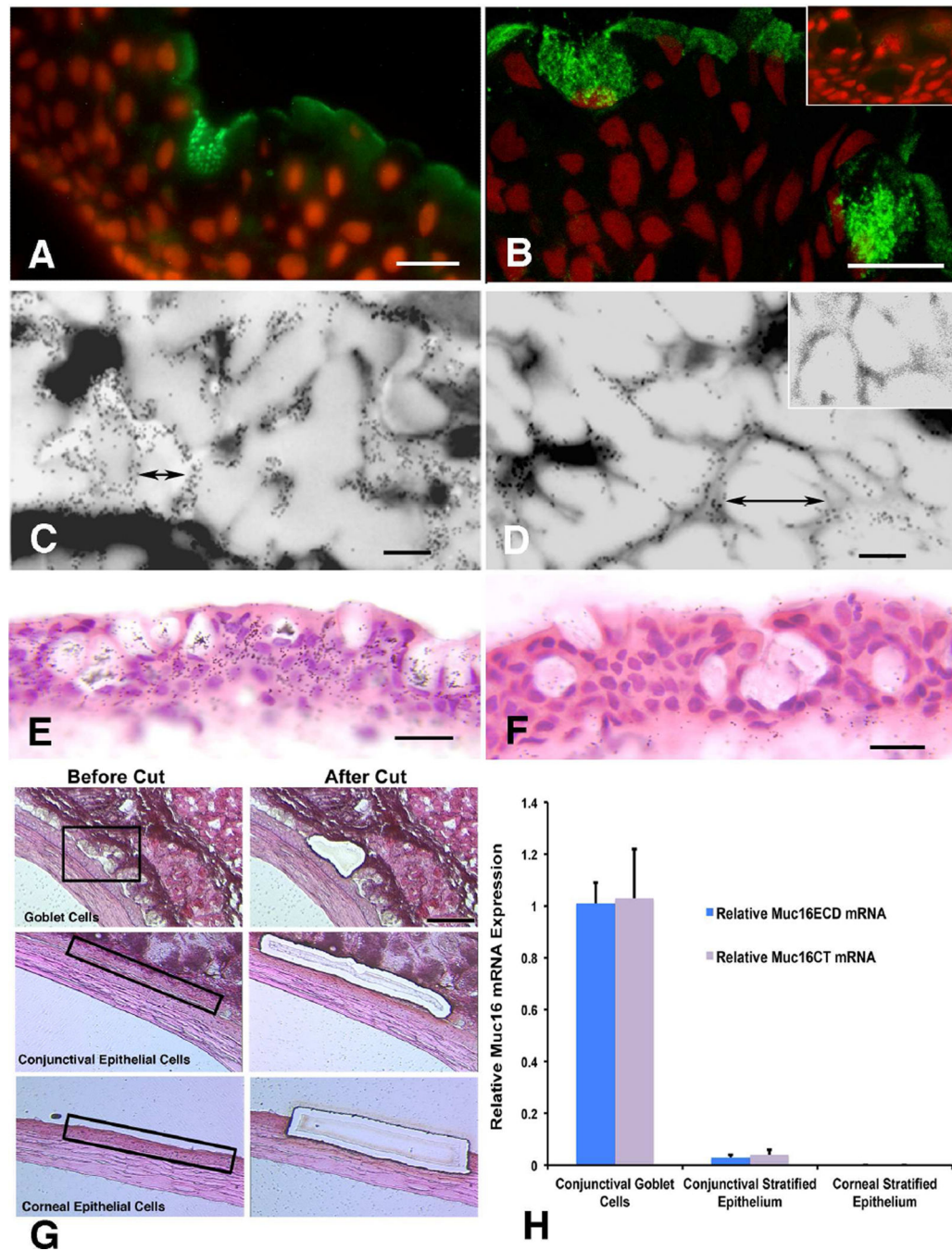
References

- Argueso P, Spurr-Michaud S, Russo CL, Tisdale A, Gipson IK. MUC16 mucin is expressed by the human ocular surface epithelia and carries the H185 carbohydrate epitope. *Invest Ophthalmol Vis Sci.* 2003; 44:2487–2495. [PubMed: 12766047]
- Argueso P, Sumiyoshi M. Characterization of a carbohydrate epitope defined by the monoclonal antibody H185: sialic acid O-acetylation on epithelial cell-surface mucins. *Glycobiology.* 2006; 16:1219–1228. [PubMed: 16940404]
- Blalock TD, Spurr-Michaud SJ, Tisdale AS, Gipson IK. Release of membrane-associated mucins from ocular surface epithelia. *Invest Ophthalmol Vis Sci.* 2008; 49:1864–1871. [PubMed: 18436821]
- Blalock TD, Spurr-Michaud SJ, Tisdale AS, Heimer SR, Gilmore MS, Ramesh V, Gipson IK. Functions of MUC16 in corneal epithelial cells. *Investigative ophthalmology & visual science.* 2007; 48:4509–4518. [PubMed: 17898272]

- Cheon DJ, Wang Y, Deng JM, Lu Z, Xiao L, Chen CM, Bast RC, Behringer RR. CA125/MUC16 is dispensable for mouse development and reproduction. *PLoS One*. 2009; 4:e4675. [PubMed: 19262696]
- Danjo Y, Watanabe H, Tisdale AS, George M, Tsumura T, Abelson MB, Gipson IK. Alteration of mucin in human conjunctival epithelia in dry eye. *Invest Ophthalmol Vis Sci*. 1998; 39:2602–2609. [PubMed: 9856770]
- Gipson IK, Argueso P. Role of mucins in the function of the corneal and conjunctival epithelia. *Int Rev Cytol*. 2003; 231:1–49. [PubMed: 14713002]
- Gipson IK, Spurr-Michaud S, Tisdale A, Menon BB. Comparison of the transmembrane mucins MUC1 and MUC16 in epithelial barrier function. *PLoS One*. 2014; 9:e100393. [PubMed: 24968021]
- Gipson IK, Spurr-Michaud SJ, Senchyna M, Ritter R 3rd, Schaumberg D. Comparison of mucin levels at the ocular surface of postmenopausal women with and without a history of dry eye. *Cornea*. 2011; 30:1346–1352. [PubMed: 22089171]
- Gipson IK, Tisdale AS. Visualization of conjunctival goblet cell actin cytoskeleton and mucin content in tissue whole mounts. *Exp Eye Res*. 1997; 65:407–415. [PubMed: 9299177]
- Gniewek P, Kolinski A. Coarse-grained modeling of mucus barrier properties. *Biophys J*. 2012; 102:195–200. [PubMed: 22339855]
- Govindarajan B, Gipson IK. Membrane-tethered mucins have multiple functions on the ocular surface. *Exp Eye Res*. 2010; 90:655–663. [PubMed: 20223235]
- Haridas D, Ponnusamy MP, Chugh S, Lakshmanan I, Seshacharyulu P, Batra SK. MUC16: molecular analysis and its functional implications in benign and malignant conditions. *FASEB J*. 2014; 28:4183–4199. [PubMed: 25002120]
- Inatomi T, Spurr-Michaud S, Tisdale AS, Gipson IK. Human corneal and conjunctival epithelia express MUC1 mucin. *Investigative ophthalmology & visual science*. 1995; 36:1818–1827. [PubMed: 7635656]
- Inatomi T, Spurr-Michaud S, Tisdale AS, Zhan Q, Feldman ST, Gipson IK. Expression of secretory mucin genes by human conjunctival epithelia. *Invest Ophthalmol Vis Sci*. 1996; 37:1684–1692. [PubMed: 8675412]
- Kesimer M, Ehre C, Burns KA, Davis CW, Sheehan JK, Pickles RJ. Molecular organization of the mucins and glycocalyx underlying mucus transport over mucosal surfaces of the airways. *Mucosal Immunol*. 2013; 6:379–392. [PubMed: 22929560]
- Kunert KS, Tisdale AS, Gipson IK. Goblet cell numbers and epithelial proliferation in the conjunctiva of patients with dry eye syndrome treated with cyclosporine. *Arch Ophthalmol*. 2002; 120:330–337. [PubMed: 11879137]
- Marcos-Silva L, Narimatsu Y, Halim A, Campos D, Yang Z, Tarp MA, Pereira PJ, Mandel U, Bennett EP, Vakhrushev SY, Levery SB, David L, Clausen H. Characterization of binding epitopes of CA125 monoclonal antibodies. *J Proteome Res*. 2014; 13:3349–3359. [PubMed: 24850311]
- Marko CK, Menon BB, Chen G, Whitsett JA, Clevers H, Gipson IK. Spdef null mice lack conjunctival goblet cells and provide a model of dry eye. *Am J Pathol*. 2013; 183:35–48. [PubMed: 23665202]
- Shirai K, Okada Y, Cheon DJ, Miyajima M, Behringer RR, Yamanaka O, Saika S. Effects of the loss of conjunctival Muc16 on corneal epithelium and stroma in mice. *Invest Ophthalmol Vis Sci*. 2014; 55:3626–3637. [PubMed: 24812549]
- Spurr-Michaud S, Argueso P, Gipson I. Assay of mucins in human tear fluid. *Exp Eye Res*. 2007; 84:939–950. [PubMed: 17399701]
- Wang Y, Cheon DJ, Lu Z, Cunningham SL, Chen CM, Luo RZ, Xing D, Orsulic S, Bast RC Jr, Behringer RR. MUC16 expression during embryogenesis, in adult tissues, and ovarian cancer in the mouse. *Differentiation*. 2008; 76:1081–1092. [PubMed: 18637025]

Highlights

- The data show that human conjunctival goblet cells express the membrane mucin MUC16.
- The membrane tethered mucin, is localized to mucin granules along the granule membrane.
- RT-PCR of mouse goblet cell RNA demonstrates full length sequence for the mouse homologue, Muc16.
- The amount of MUC16 in human tears correlates with the amount of goblet cell mucin MUC5AC in tears.

**Figure.**

Demonstration of MUC16 protein localization and message on human and mouse conjunctival goblet cells.

Immunohistochemical localization of antibodies to MUC16 (A) (OC125) and (B) (M11) on frozen sections of human conjunctiva, illustrating the presence of MUC16 in the mucin granules of the goblet cells as well as along the apical membrane of the epithelial cells. Secondary antibody control is in upper left inset in B, Bar=18μm. C and D illustrate immunoelectron microscopic localization of MUC16 using antibody H185, MUC16

localizes to the membranes around the mucin granules within human conjunctival goblet cells (arrows show a mucin granule), Inset in D shows secondary 10nm gold conjugated antibody control, Bar=0.2um. E and F show *in situ* hybridization of MUC16 message in human conjunctival goblet cells using S³⁵ radiolabelled oligoprobe (E=anti-sense probe, F=sense probe), Bar=10um. G illustrates the laser capture methodology used to dissect out specific areas of mouse conjunctival and corneal tissue for RNA isolation: goblet cell clusters only (top), conjunctival epithelial cells (middle), and corneal epithelial cells (bottom). H, graph shows RT-PCR data on relative levels of Muc16 ectodomain (ECD) and Muc16 cytoplasmic tail (CT) mRNA in conjunctival goblet cells, conjunctival epithelial cells, and corneal epithelial cells from tissue harvested by LCM.

Author Manuscript

Author Manuscript

Author Manuscript

Author Manuscript

Table

Spearman Rank Correlation Analysis of Mucins in Tears from Human Patients

Comparison	Spearman r value	p value	N
MUC5AC to MUC16*	0.3857	0.0002	88
MUC5AC to MUC1	-0.08488	0.5620	49
MUC16 to MUC1	0.3329	0.0312	42

* Considered significant at $p < 0.01$

Author Manuscript

Author Manuscript

Author Manuscript

Author Manuscript