

# Maturation Disparity between Hand-Wrist Bones in a Chinese Sample of Normal Children: An Analysis Based on Automatic BoneXpert and Manual Greulich and Pyle Atlas Assessment

Ji Zhang, MD<sup>1, 2</sup>, Fangqin Lin, MD<sup>2</sup>, Xiaoyi Ding, MD, PhD<sup>1</sup>

<sup>1</sup>Department of Radiology, Ruijin Hospital, Shanghai Jiao Tong University School of Medicine, Shanghai 200025, China; <sup>2</sup>Department of Radiology, Shanghai Children's Hospital, Shanghai Jiao Tong University, Shanghai 200040, China

**Objective:** To assess the maturation disparity of hand-wrist bones using the BoneXpert system and Greulich and Pyle (GP) atlas in a sample of normal children from China.

**Materials and Methods:** Our study included 229 boys and 168 girls aged 2–14 years. The bones in the hand and wrist were divided into five groups: distal radius and ulna, metacarpals, proximal phalanges, middle phalanges and distal phalanges. Bone age (BA) was assessed separately using the automatic BoneXpert and GP atlas by two raters. Differences in the BA between the most advanced and retarded individual bones and bone groups were analyzed.

**Results:** In 75.8% of children assessed with the BoneXpert and 59.4% of children assessed with the GP atlas, the BA difference between the most advanced and most retarded individual bones exceeded 2.0 years. The BA mean differences between the most advanced and most retarded individual bones were 2.58 and 2.25 years for the BoneXpert and GP atlas methods, respectively. Furthermore, for both methods, the middle phalanges were the most advanced group. The most retarded group was metacarpals for BoneXpert, while metacarpals and the distal radius and ulna were the most retarded groups according to the GP atlas. Overall, the BAs of the proximal and distal phalanges were closer to the chronological ages than those of the other bone groups.

**Conclusion:** Obvious and regular maturation disparities are common in normal children. Overall, the BAs of the proximal and distal phalanges are more useful for BA estimation than those of the other bone groups.

**Index terms:** Age determination by skeleton; Pattern recognition, automated; Developmental disabilities; Child; Radiography

## INTRODUCTION

The assessment of skeletal maturity or bone age (BA) is a routine procedure in pediatric radiology, for which the Greulich and Pyle (GP) method is a commonly employed

technique (1, 2). However, the main problem with this method is interobserver variability (3-5). To avoid the subjectivity of human observations, researchers have attempted to develop auto-computation technology for BA assessment (6). Consequently, a fully automated image analysis method, BoneXpert, has been developed and used for several years. This software can assess the BA according to the bone shape, density and texture sensitive to epiphyseal fusion. BoneXpert is advantageous in eliminating the interobserver variability and bias, as compared with radiologist readings using the GP atlas and has been verified as a valid and efficient method in Asian populations (7-11).

Because BoneXpert can rapidly measure both the total BA of the hand and wrist and the individual BAs of 8–13 separate bone structures, it provides an opportunity to

Received May 24, 2015; accepted after revision February 3, 2016. Funded by Science and Technology Commission of Shanghai, The Number of research item is 134119a2400.

**Corresponding author:** Xiaoyi Ding, MD, PhD, Department of Radiology, Ruijin Hospital, Shanghai Jiao Tong University School of Medicine, No.197, Ruijin 2nd Road, Shanghai 200025, China.

• Tel: (86) 18918967155 • Fax: (86) 21-64150737

• E-mail: dingxiaoyi2013@qq.com

This is an Open Access article distributed under the terms of the Creative Commons Attribution Non-Commercial License (<http://creativecommons.org/licenses/by-nc/3.0>) which permits unrestricted non-commercial use, distribution, and reproduction in any medium, provided the original work is properly cited.

observe the maturity disparities of these bones, which have been noted by several authors (12-15). For example, the authors who developed the GP atlas noted that, even in normal children, the bones in the hand and wrist tend to behave more or less as a unit during development (1). Clinically, maturation disparity may cause inaccurate BA assessment. For example, if the BAs of the metacarpals, phalanges and distal radius of one child are 6.5, 7.5, and 6.0 years, respectively, according to the GP atlas, radiologists must balance these discrepancies to arrive at a single BA diagnosis, which can be difficult. Therefore, we aimed to investigate the existence, scope, regularity and possible underlying reasons of maturity disparities.

In our study, in addition to the objective automatic BoneXpert approach, subjective manual GP atlas assessment was also performed for comparative purposes to observe the phenomenon of maturation disparity. This technique was implemented because BoneXpert has been calibrated against the GP system, although it is an independent BA rating system (16). To the best of our knowledge, no report has been published on the objective and subjective evaluation of BA maturation disparity.

## MATERIALS AND METHODS

### Subjects

This study was a prospective study and approved by the Institutional Review Boards of our institutions. Left hand and wrist posterior-anterior (PA) views were obtained from children who came to the emergency room/clinic to evaluate for a possible bone fracture during the period of Jan 2010 to Dec 2013. Height, weight and other related information were obtained from medical records. Children with abnormal stature and those with a history of any serious disease or chronic illness were excluded. The subjects included in our study were 2 to 14 years old, since the validated age range for the current version (2.0) of BoneXpert is 2.5 to 17 years for boys and 2 to 15 years for girls. There were about a total of 234 radiographs of boys aged 2.5 to 14 years (mean age 8.6 years) and 170 radiographs of girls aged 2 to 13 years (mean age 6.9 years) in our study.

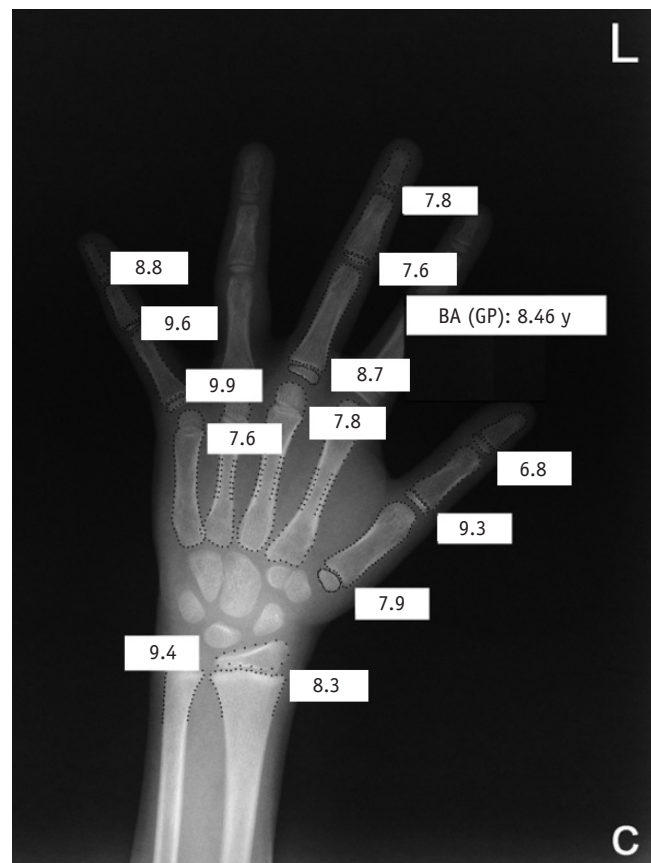
### Bone Age Measurement

BoneXpert (Visiana, Holte, Denmark) has been integrated into the picture and archiving and communicating system and can fully and automatically locate the borders of 15 bones (the distal, and proximal bones of the 1st phalange,

the distal, middle and proximal bones of the 3rd and 5th phalange, five metacarpals, radius and ulna) on the hand-wrist PA view. A BA is assigned to 13 bones (the 2nd and 3rd metacarpal has only one BA, and the same as the 4th and 5th metacarpal) mainly based on the bone shape, density and texture sensitive to epiphyseal fusion (Fig. 1) (7, 17).

According to the calculating rule of BoneXpert, if a bone's BA value deviated from the average of all bones by  $> 2.4$  bone years, it was deemed unacceptable. In addition, if fewer than 8 bones were recognized and calculated, the entire image was rejected, and no BA values were reported (2). In total, BoneXpert rejected 7 radiographs for poor image quality. Therefore, the remaining 397 radiographs (229 for boys and 168 for girls) were finally included in the study. For ease of comparison, the 7 rejected radiographs were also not included in the manual GP atlas analysis.

Additionally, according to the anatomical differences and related references, five groups were defined, each of which consisted of bones from the same row, to further clarify the maturation disparity (5, 13, 14). The groups were as



**Fig. 1. Greulich and Pyle (GP) BAs of 13 Radius-Ulna-Short bone and total BAs are automatically calculated by BoneXpert.** BA = bone age

follows: 1) distal radius and distal ulna; 2) the first, third and fifth metacarpals; 3) the first, third and fifth proximal phalanges; 4) the third and fifth middle phalanges; and 5) the first, third and fifth distal phalanges. Currently, BoneXpert is unable to calculate the BA of carpals.

With BoneXpert, the mean BA for each of the five bone groups was determined by averaging the BAs of the individual bones within the same group. However, some bones were excluded from the mean BA. For example, if BoneXpert failed to calculate a BA for the distal ulna, the BA of the distal radius was regarded as the mean BA of the distal radius and distal ulna. Then, the mean BA for each of the five bone groups was compared with the chronological age (CA) of the corresponding child.

The method described above was repeated using the manual GP atlas technique. In some cases, if one epiphysis could not be seen clearly, the average of the BAs of the other bones in the same group was regarded as the mean BA. More attention was paid to some bones for which the BAs could not be acquired by BoneXpert because they may have BAs less than or greater than the average BA by 2.4 years or more. In this situation, BoneXpert may under- or overestimate the maturation disparity.

For GP atlas assessment, two pediatric radiologists who were skilled at BA diagnosis (with 8 and 14 years of experience, respectively) made separate diagnoses of the overall BAs and that of the Radius-Ulna-Short bones (RUS). If an image fell between two standard reference images in the GP atlas, such as 5 and 6 years, it was assigned as 5.5 years. The mean BA assessed by the radiologists was considered the final BA diagnosis.

There are two differences between the GP atlas and BoneXpert. First, BoneXpert can provide continuous BA values, such as 5.3 years, 5.4 years, and 5.5 years, whereas the GP atlas only provides standard images representing each year, such as 5 years, 6 years and 7 years. Therefore, the BA values of the GP atlas represent intervals. Second, researchers verified that the precision of BoneXpert is approximately 0.17 years, which corresponds to approximately one third that of subjective methods, such as the GP atlas. Here, the precision is also called the repeatability, which means the ability to obtain the same result with a repeated X-ray exposure. Therefore, BoneXpert is theoretically able to detect a significant change in maturation three times earlier than a radiologist (16); or in other words, in the same period time (for example 6 months), BoneXpert could find 0.17 years change of BA,

while using a GP atlas, a radiologist may find a different BA estimation only if the BA changes is more than 0.5 years.

### Data Collection

The overall BAs of all subjects were recorded using the automatic BoneXpert system and manual GP atlas and these were subsequently compared with their CAs. This step verified the validity of BoneXpert and manual GP atlas for our sample from an overall perspective. In the second step, the BA of each bone of each patient was recorded using two methods and the differences in individual BA values between the most advanced and retarded individual bones were compared. A high maximal BA difference between individual bones in the same radiograph can cause diagnostic difficulty during BA estimation and the maximal difference between individual bones is also a good indicator of maturation disparity.

### Statistical Analysis

Statistical analysis was performed using SPSS (version 17.0; SPSS Inc., Chicago, IL, USA). The BA values between different individual bones and bone groups for boys and girls were compared using descriptive statistics, and the variance was assessed by one-way analysis of variance followed by a post-hoc test. A  $p$  value  $< 0.05$  indicated a significant difference.

## RESULTS

In our study, BoneXpert was used to analyze 2977 bones in 229 boys and 2184 bones in 168 girls. However, BoneXpert failed to determine BAs for 95 bones in 60 boys and 140 bones in 79 girls. Thus, BoneXpert rejected about 4.5% (235/5161) of individual bones, most of which were the radius or ulna, followed by the fifth middle phalanges. The distal epiphysis of the radius and/or ulna usually failed to be identified because it overlapped with carpals.

For BoneXpert, no significant difference was found between the overall BA and CA at any age level. For the five groups of hand-wrist bones, significant differences between BA and CA were observed in 15 of the 115 age groups for both genders. Among the 15 age groups, metacarpals groups of different ages with retarded BA were found in 6, and middle phalanges groups of different ages with advanced BA were found in 6 groups (Table 1).

For manual GP atlas, there were some differences compared with BoneXpert. First, for boys aged 11–13

years, a significant difference existed between the overall BAs and CAs. For the five groups of hand-wrist bones, significant differences existed between BA and CA in 24 of the 115 age groups for both genders. Among the 24 age groups, metacarpal groups of different ages with retarded BA were found in 7, and middle phalange groups of different ages with advanced BA were found in 9 groups (Table 2). Therefore, for both methods and two genders, middle phalanges and metacarpals were the most advanced and retarded BA development in the five bone groups, respectively.

The yearly mean BA difference between the most advanced and retarded individual bones within the same

radiograph using the two assessment methods were calculated. For both genders, the overall mean differences between the most advanced and retarded individual bones of children determined using the BoneXpert and GP atlas methods were approximately 2.58 and 2.25 years, respectively (Table 3).

The frequency of each maximal BA difference in each subgroup was summarized in Table 4. For example, in the BoneXpert group, in both sexes, almost half of these differences were in the 2- to 2.99-year-old group. Additionally, approximately 75.8% of the boys and girls in our sample had a maximal BA difference that exceeded 2 years. Furthermore, in the manual GP atlas group,

**Table 1. Mean BAs (in Years) Overall and for Each of Five Groups of Hand-Wrist Bones of Children Determined According to BoneXpert**

Age	n (M/F)	Overall BA		Distal Radius and Ulna		Metacarpals		Proximal Phalanges		Middle Phalanges		Distal Phalanges	
		Boys	Girls	Boys	Girls	Boys	Girls	Boys	Girls	Boys	Girls	Boys	Girls
2-2.99	8/16	2.95	2.81	2.56	2.36	2.69	2.40	2.97	2.75	3.44	3.22*	3.19	3.13*
3-3.99	13/17	3.72	3.25	3.79	3.17	3.43	3.06	3.63	3.17	3.95	3.79	3.91	3.48
4-4.99	22/24	4.80	4.22	4.67	3.90	4.60	4.01	4.78	4.20	4.84	4.81	4.96	4.55
5-5.99	24/24	5.51	5.53	5.35	5.12	5.11	5.17	5.55	5.63	6.06	6.30*	5.58	5.59
6-6.99	16/19	6.14	6.67	6.21	6.24	5.62*	6.16	6.13	6.81	6.88	7.33*	6.31	6.72
7-7.99	18/6	6.88	7.39	6.46*	6.98	6.38*	6.81	7.14	7.56	7.87	7.98	7.04	7.52
8-8.99	20/12	7.74	8.66	7.80	8.60	7.08*	8.11	7.77	9.14	8.68	9.30	7.82	8.53
9-9.99	15/11	8.72	8.95	8.50	8.63	7.95*	8.17*	8.91	9.27	9.55	9.98*	8.82	9.12
10-10.99	16/11	10.10	10.25	10.05	10.42	9.33	9.81	10.46	10.49	10.84	10.98	10.06	10.04
11-11.99	33/19	11.87	10.95	11.81	10.55*	11.32	10.73*	12.06	11.17	12.74*	11.51	11.75	11.00
12-12.99	24/9	12.69	11.26	12.61	11.04	12.25	11.04	12.94	11.31	13.25*	11.75	12.61	11.07
13-13.99	20/0	13.27		13.10		12.95		13.45		13.72		13.35	

\*Indicate significant difference ( $p < 0.05$ ) between BA and CA. BA = bone age, CA = chronological age

**Table 2. Mean of BAs (in Years) Overall and for Each of Five Groups of Hand-Wrist Bones of Children According to Manual Greulich and Pyle Atlas Method**

Age	n (M/F)	Overall BA		Distal Radius and Ulna		Metacarpals		Proximal Phalanges		Middle Phalanges		Distal Phalanges	
		Boys	Girls	Boys	Girls	Boys	Girls	Boys	Girls	Boys	Girls	Boys	Girls
2-2.99	8/16	2.80	2.50	2.63	2.30	2.52	2.26	3.32	2.78	3.89*	3.17	3.14	2.57
3-3.99	13/17	3.25	3.05	3.70	2.95	3.58	2.65*	4.25	3.32	4.72	3.67	3.92	3.08
4-4.99	22/24	4.20	4.25	4.30	3.80	4.22	3.56	4.81	4.27	5.51	4.35	4.80	3.98
5-5.99	24/24	5.55	5.30	5.07	5.50	4.73	5.26	5.79	5.89	6.58	6.41	5.60	5.54
6-6.99	16/19	6.67	6.45	6.25	6.55	5.92	6.41	6.98	7.08	7.88*	7.73*	6.65	7.10
7-7.99	18/6	7.40	7.50	6.90	6.70	6.83	6.40	7.63	8.05	8.51	8.21*	7.25	8.75
8-8.99	20/12	8.65	8.5	7.72	8.42	7.62*	8.08	8.16	8.96	9.16	9.56*	7.85	8.62
9-9.99	15/11	8.95	9.30	8.38*	9.55	8.24*	9.17	9.57	10.25	10.34	10.92*	9.25	10.12
10-10.99	16/11	10.95*	10.00	10.82	9.53	10.52	9.35*	11.10*	10.02	12.03*	10.46	10.93	9.78
11-11.99	33/19	12.35*	11.25	12.50*	10.65	12.25	10.32*	12.42*	10.87	13.04*	12.02	12.60*	10.85
12-12.99	24/9	13.65*	11.85	13.25*	11.52	13.00*	11.18*	13.62*	11.95	13.29*	12.95	13.43*	11.55
13-13.99	20/0	13.75		13.45		13.35		13.50		14.10		13.40	

\*Indicate significant difference ( $p < 0.05$ ) between BA and CA. BA = bone age, CA = chronological age

approximately 59.4% of the children had a maximal individual BA difference exceeding 2 years.

The mean differences between the BAs and CAs of the five bone groups for boys and girls were shown in Figures 2 and 3 for the BoneXpert method, and in Figures 4 and 5 for the GP atlas method, respectively. Although these four figures presented some differences, their similarities were obvious. First, the upper curves all corresponded to the middle phalanges, indicating that middle phalanges was almost the most advanced bone group for all age levels, with only with one or two exceptions, such as the distal phalanges at age 4 for boys assessed using BoneXpert. Second, the bottom curves of these four figures primarily corresponded to the metacarpals, although the distal radius and ulna were also present as the most retarded development group, especially for the girls assessed with the manual GP atlas method.

**Table 3. Mean Difference (Years) between Most Advanced and Most Retarded Bones in Each Age Group and Gender Using Two Measurements**

Age (Years)	BoneXpert		Manual GP	
	Boys	Girls	Boys	Girls
2-2.99	2.85	1.65	2.62	1.22
3-3.99	2.76	1.80	2.83	1.15
4-4.99	2.19	2.42	2.52	1.72
5-5.99	2.42	2.84	2.62	2.23
6-6.99	2.65	2.73	2.60	2.22
7-7.99	3.04	2.55	2.92	2.53
8-8.99	3.17	2.50	2.90	2.68
9-9.99	3.01	2.86	2.84	2.51
10-10.99	2.85	2.54	2.50	1.78
11-11.99	2.65	2.50	1.90	2.26
12-12.99	2.24	2.87	1.60	2.14
13-13.99	2.20		1.40	
Mean	2.58*		2.25†	

\*2.58 and †2.25 were overall mean for both gender for BoneXpert and Manual GP, respectively. GP = Greulich and Pyle

Third, the other three groups overlapped within the range bounded by the curves of the metacarpals and the middle phalanges.

## DISCUSSION

In this study, we analyzed the BA differences of RUS bones using both objective automatic BoneXpert software and subjective manual GP atlas assessment. Although significant differences existed in the BA and CA values of boys aged 11-13 years using the manual GP atlas method, differences in the BAs between bones were highly convincing because these measurements were obtained by the same two pediatric radiologists. Regarding BoneXpert, neither sex nor age groups presented significant differences between overall BA and CA in any of the 13 bones studied. This result confirmed that BoneXpert could provide a reliable standard for BA assessment in Chinese children (10). Based on the overall validity, we can further analyze detailed information on the maturation disparity between individual bones and bone groups in the regions of the hand and wrist.

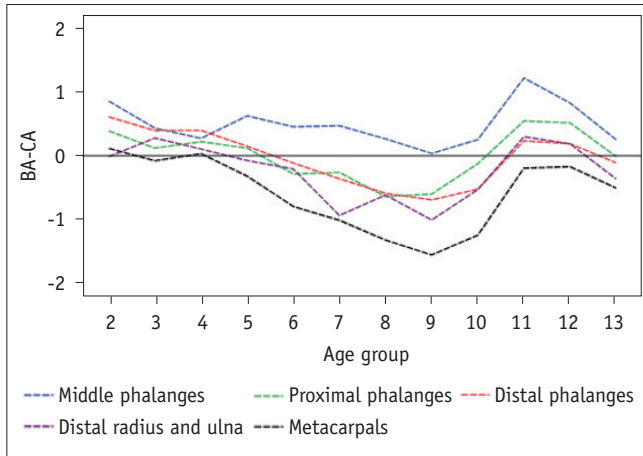
Our results showed that maturation disparity was common in healthy Chinese children. In 75.8% of children assessed with the automatic BoneXpert system and 59.4% of children assessed using the manual GP atlas method, the maximal BA difference between individual bones exceeded 2 years. The mean BA differences between the most advanced and most retarded individual bones were 2.58 and 2.25 years for BoneXpert and the GP atlas, respectively. The high frequency of such large discrepancies suggests that pediatric radiologists are generally able to observe this phenomenon in routine BA evaluations. The discrepancies of 2.58 and 2.25 years between individual bones suggest that at least three to six standard pictures must be analyzed carefully to apply

**Table 4. Frequency of Each Maximal BA Difference Was in Each Subgroup**

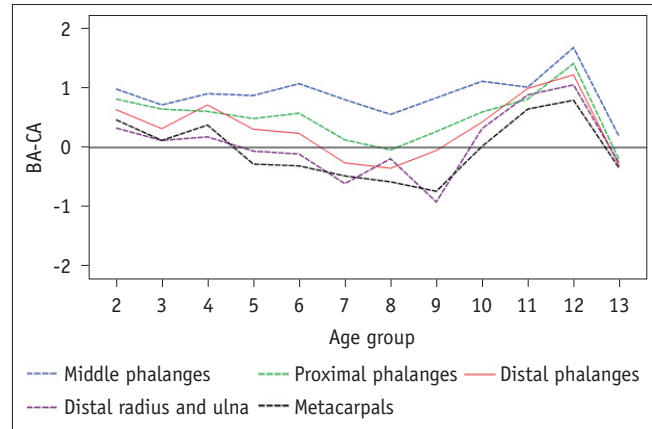
Maximal BA Gap (Years)	0-0.99 (n)	1-1.99 (n)	2-2.99 (n)	3-3.99 (n)	4 + (n)	Total (n)
BoneXpert						
Boys	0.4% (1)	21.4% (49)	48.9% (112)	26.2% (60)	3.1% (7)	100% (229)
Girls	0.6% (1)	26.8% (45)	51.2% (86)	18.5% (31)	3.0% (5)	100% (168)
Total	0.50% (2)	23.7% (94)	49.9% (198)	22.9% (91)	3.0% (12)	100% (397)
Manual GP						
Boys	6.5% (15)	27.1% (62)	43.7% (100)	13.50% (31)	9.2% (21)	100% (229)
Girls	19.6% (33)	30.4% (51)	31.5% (53)	13.7% (23)	4.8% (8)	100% (168)
Total	12.1% (48)	28.5% (113)	38.5% (153)	13.6% (54)	7.3% (29)	100% (397)

Approximately 75.8% (49.9% + 22.9% + 3.0%, black print) and 59.4% (38.5% + 13.6% + 7.3%, black print) of children in our sample had maximal BA difference that exceeded 2 years for BoneXpert group and manual GP atlas group, respectively. BA = bone age, GP = Greulich and Pyle

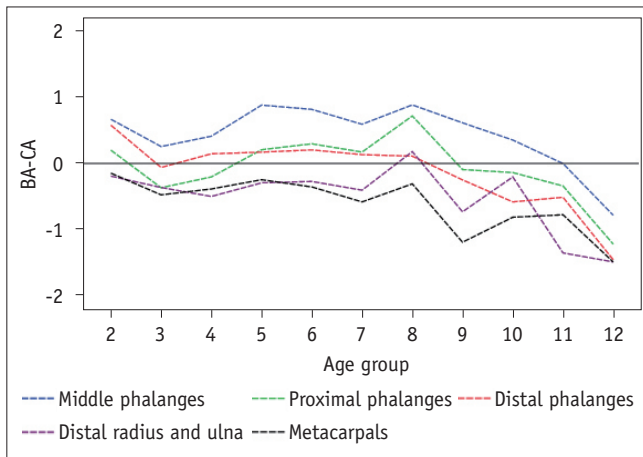




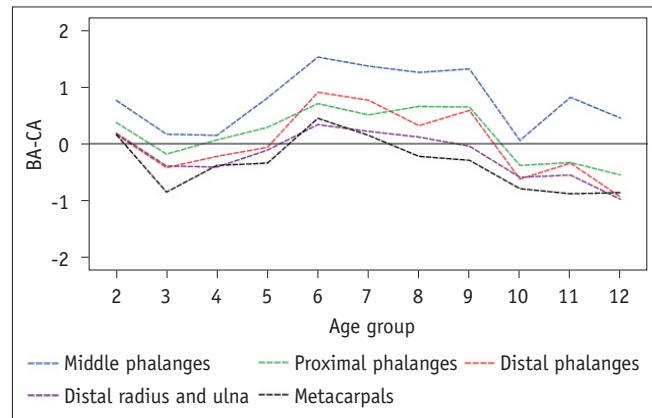
**Fig. 2. Mean differences between bone ages and chronological ages (BA-CA) of five bone groups for boys using BoneXpert.** Middle phalanges and metacarpals were most advanced and retarded groups, respectively, at almost all age levels.



**Fig. 4. Mean differences between bone ages and chronological ages (BA-CA) of five bone groups determined using manual GP atlas for boys.** Middle phalanges were most advanced group, and metacarpals and distal radius and ulna were most retarded groups at almost all age levels. GP = Greulich and Pyle



**Fig. 3. Differences between bone ages and chronological ages (BA-CA) of five bone groups for girls using BoneXpert.** Middle phalanges group was most advanced group. Metacarpals group was most retarded group, except at some ages, when distal radius and ulna were more retarded.



**Fig. 5. Mean differences between bone ages and chronological ages (BA-CA) of five bone groups according to manual GP atlas for girls.** Middle phalanges group was most advanced group at all age levels. Metacarpals group was most retarded group, except at some ages, when distal radius and ulna were more retarded. GP = Greulich and Pyle

the GP atlas method, because the time intervals separating the standard pictures in the GP atlas range from 0.5 to 1 year. This maturation disparity increases the burden on pediatric radiologists.

In fact, maturation disparity represented a challenge during the production of the GP atlas because 58 standard plates were chosen from among more than 5000 radiographs of hands. However, almost every standard picture in the GP atlas still contains bones with disparate BAs (1). Although the authors of the GP atlas suggested that the “abnormal” development of individual bones should also be noted during the overall BA assessment (1), many clinicians prefer to consider a single, overall BA for all hand-wrist

bones. Therefore, a total BA diagnosis may balance out the maturation disparity between bones.

Although maturation disparity is clearly widespread, it exhibits regular patterns. Based on our results, the maturation disparity is mainly attributable to the most advanced bones (middle phalanges) and the most retarded bones (metacarpals). In addition, the BAs of the proximal and distal phalanges were closer to the CA in both genders at most age levels. In other words, when applying the GP atlas to evaluate Chinese children, the metacarpals and middle phalanges are less reliable for BA determination (17). This point is important because radiologists can confidently rely on the proximal and distal phalanges instead of

giving equal weight to each bone, thereby saving time and overcoming the issue of maturation disparity.

Our findings were somewhat similar to those of Lee (14), who applied the manual GP atlas to assess children from Hong Kong in China in the 1970s. They reported that the middle and distal phalanges tended to be relatively advanced, followed by the metacarpals, proximal phalanges and distal radius-ulna. However, in contrast to our findings, a study in a Spanish population claimed that the best agreement between BA and CA occurred between the distal ulna and radius and the metacarpal bones (15). Compared with their results, our study addressed not only groups of bones in the same rows of different regions, but also the largest discrepancy between RUS bones and the different frequencies of maturation disparity. For example, 59.4% of children assessed using the manual GP atlas method presented maximal BA differences of more than 2 years. In addition, the objective measurements of BoneXpert are also valuable.

In theory, the maturation disparity would become more serious if the rejected bones whose BoneXpert BAs differed from the average BA by 2.4 years were included. However, after careful, manual comparison, only a few cases of the fifth middle phalanges may be rejected because of over-advanced development, which might increase the maturation discrepancy to some degree. Therefore, the overall result may not be substantially altered. In addition, although the metacarpals were some of the most developmentally retarded bones in our study, BoneXpert did not reject any of the metacarpals for its BA values differing from the average BA by 2.4 years or more.

The main reason underlying maturation disparity may be that the bones in different regions exhibit unique growth velocities and patterns, which may be attributed to the different activities of the bones. For example, the ulnas often occurred later than the radius. Clearly, the degree of activity or the physiological function of the ulnas is inferior to that of the radius (18, 19). Similarly, the middle phalanges are the center axis of the fingers; therefore, they may be extremely active. In contrast, the metacarpal experiences much less activity than the middle phalanges (20). Therefore, in our study, the most advanced and retarded bone groups in terms of development are the middle phalanges and metacarpals, respectively.

Other reasons for maturation disparity may relate to the different assessment methods and races (11). For example, our study showed that the maturation disparities observed

using the two methods are different to some degree. Furthermore, BoneXpert was designed to return the same average BA as the GP method for all 13 bones in Caucasian children. However, there is no a priori reason to expect agreement between the average BAs of these five groups in ethnicities other than Caucasian. In other words, the BA of metacarpals in our sample may be underestimated by BoneXpert or GP atlas assessment. For example, if a metacarpal is delayed by more than 2.4 years, it will be excluded by BoneXpert, although in reality, this bone may be only 1.8 years behind the expectation. However, revising BoneXpert to allow metacarpals to be delayed by up to 3.0 years would not be practical because doing so would require the subject's ethnicity to be input in BoneXpert.

Clearly, our study had limitations. First, we only analyzed 8 to 13 bones because of the inherent RUS focus of BoneXpert. Second, our samples did not include children under 2 years old because these young children often lack a clearly visible epiphysis that can be recognized by BoneXpert. Third, the Tanner-Whitehouse 3 method (TW3) is more reproducible and useful for the evaluation of individual bones than the GP atlas. However, TW3 was not used commonly in China, whereas BoneXpert and the GP atlas were calibrated to agree (on average) to ensure "backwards compatibility" between the two systems (7). Therefore, the manual GP atlas method was used for comparison in our study.

In summary, our study revealed that, in healthy Chinese children, approximately 59.4% of cases assessed with the manual GP atlas method and 75.8% of children analyzed with the automatic BoneXpert method presented maximal BA differences of more than 2 years. This discordance can cause difficulties in BA diagnosis. However, this maturation disparity exhibited a regular pattern i.e., in both genders and both measurement methods, the middle phalanges and the metacarpals were consistently the most advanced and most retarded bone groups, respectively. Additionally, the proximal and distal phalanges are more reliable for BA determination. Different functional activities, measurement methods and races may contribute to the observed maturation disparity. Thus, pediatric radiologists should seriously consider the phenomenon of maturation disparity.

#### Acknowledgments

I deeply appreciate Professor Thodberg H H has provide the free use of BoneXpert.

## REFERENCES

1. Greulich WW, Pyle SI. *Radiographic Atlas of Skeletal Development of the Hand and Wrist*, 2nd ed. Stanford, CA: Stanford University Press, 1959
2. Kim JR, Lee YS, Yu J. Assessment of bone age in prepubertal healthy Korean children: comparison among the Korean standard bone age chart, Greulich-Pyle method, and Tanner-Whitehouse method. *Korean J Radiol* 2015;16:201-205
3. Ashizawa K, Kumakura C, Zhou X, Jin F, Cao J. RUS skeletal maturity of children in Beijing. *Ann Hum Biol* 2005;32:316-325
4. Zhang SY, Liu LJ, Wu ZL, Liu G, Ma ZG, Shen XZ, et al. Standards of TW3 skeletal maturity for Chinese children. *Ann Hum Biol* 2008;35:349-354
5. Hsieh CW, Liu TC, Wang JK, Jong TL, Tiu CM. Simplified radius, ulna, and short bone-age assessment procedure using grouped-Tanner-Whitehouse method. *Pediatr Int* 2011;53:567-575
6. Thangam P, Mahendiran TV, Thanushkodi K. Skeletal bone age assessment - research directions. *J Eng Sci Technol Rev* 2012;2:90-96
7. Thodberg HH. Clinical review: an automated method for determination of bone age. *J Clin Endocrinol Metab* 2009;94:2239-2244
8. Martin DD, Sato K, Sato M, Thodberg HH, Tanaka T. Validation of a new method for automated determination of bone age in Japanese children. *Horm Res Paediatr* 2010;73:398-404
9. Kaplowitz P, Srinivasan S, He J, McCarter R, Hayeri MR, Sze R. Comparison of bone age readings by pediatric endocrinologists and pediatric radiologists using two bone age atlases. *Pediatr Radiol* 2011;41:690-693
10. Zhang SY, Liu G, Ma CG, Han YS, Shen XZ, Xu RL, et al. Automated determination of bone age in a modern Chinese population. *ISRN Radiol* 2013;2013:874570
11. Thodberg HH, Säwendahl L. Validation and reference values of automated bone age determination for four ethnicities. *Acad Radiol* 2010;17:1425-1432
12. Vejvoda M, Grant DB. Discordant bone maturation of the hand in children with precocious puberty and congenital adrenal hyperplasia. *Acta Paediatr Scand* 1981;70:903-905
13. Jiménez-Castellanos J, Carmona A, Catalina-Herrera CJ, Viñuales M. Skeletal maturation of wrist and hand ossification centers in normal Spanish boys and girls: a study using the Greulich-Pyle method. *Acta Anat (Basel)* 1996;155:206-211
14. Lee MM. Maturation disparity between hand-wrist bones in Hong Kong Chinese children. *Am J Phys Anthropol* 1971;34:385-395
15. Carpenter CT, Lester EL. Skeletal age determination in young children: analysis of three regions of the hand/wrist film. *J Pediatr Orthop* 1993;13:76-79
16. Thodberg HH, Kreiborg S, Juul A, Pedersen KD. The BoneXpert method for automated determination of skeletal maturity. *IEEE Trans Med Imaging* 2009;28:52-66
17. van Rijn RR, Thodberg HH. Bone age assessment: automated techniques coming of age? *Acta Radiol* 2013;54:1024-1029
18. Erhart S, Lutz M, Arora R, Schmoelz W. Measurement of intraarticular wrist joint biomechanics with a force controlled system. *Med Eng Phys* 2012;34:900-905
19. de Bruin M, van de Giessen M, Vroemen JC, Veeger HE, Maas M, Strackee SD, et al. Geometrical adaptation in ulna and radius of cerebral palsy patients: measures and consequences. *Clin Biomech (Bristol, Avon)* 2014;29:451-457
20. Daly RM, Saxon L, Turner CH, Robling AG, Bass SL. The relationship between muscle size and bone geometry during growth and in response to exercise. *Bone* 2004;34:281-287