

# Diffuse hypomyelination is not obligate for POLR3-related disorders

Roberta La Piana, MD\*  
Ferdy K. Cayami, MD\*  
Luan T. Tran, MSc  
Kether Guerrero, MSc  
Rosalina van Spaendonk,  
PhD  
Katrin Öunap, MD, PhD  
Sander Pajusalu, MD  
Tobias Haack, PhD  
Evangeline Wassmer,  
MD, PhD  
Dagmar Timmann, MD,  
PhD  
Hanna Mierzevska, MD,  
PhD  
Bwee T. Poll-Thé, MD,  
PhD  
Chirag Patel, MD  
Helen Cox, MD  
Tahir Atik, MD  
Huseyin Onay, MD, PhD  
Ferda Ozkinay, MD  
Adeline Vanderver, MD  
Marjo S. van der Knaap,  
MD, PhD  
Nicole I. Wolf, MD,  
PhD‡  
Geneviève Bernard, MD,  
MSc, FRCPC‡

Correspondence to  
Dr. Bernard:  
genevieve.bernard@mcgill.ca

**Supplemental data  
at Neurology.org**

## ABSTRACT

**Objective:** To report atypical MRI patterns associated with *POLR3A* and *POLR3B* mutations.

**Methods:** This was a multicenter retrospective study to collect neuroradiologic, clinical, and molecular data of patients with mutations in *POLR3A* and *POLR3B* without the classic MRI phenotype, i.e., diffuse hypomyelination associated with relative T2 hypointensity of the ventrolateral thalamus, globus pallidus, optic radiation, corticospinal tract at the level of the internal capsule, and dentate nucleus, cerebellar atrophy, and thinning of the corpus callosum.

**Results:** Eight patients were identified: 6 carried mutations in *POLR3A* and 2 in *POLR3B*. We identified 2 novel MRI patterns: 4 participants presented a selective involvement of the corticospinal tracts, specifically at the level of the posterior limbs of the internal capsules; 4 patients presented moderate to severe cerebellar atrophy. Incomplete hypomyelination was observed in 5 participants.

**Conclusion:** Diffuse hypomyelination is not an obligatory feature of POLR3-related disorders. Two distinct patterns, selective involvement of the corticospinal tracts and cerebellar atrophy, are added to the MRI presentation of POLR3-related disorders. **Neurology® 2016;86:1622-1626**

## GLOSSARY

**ExAC** = Exome Aggregation Consortium; **TOP** = terminal oligopyrimidine tract; **WES** = whole-exome sequencing.

POLR3-related leukodystrophy is a rare autosomal recessive disease characterized by hypomyelination often accompanied by dental abnormalities and hypogonadotropic hypogonadism.<sup>1-5</sup> In its classical form, the association of these features is referred to as 4H syndrome.<sup>1,2</sup> Mutations in the *POLR3A* and *POLR3B* genes, which encode for the 2 largest subunits of the RNA polymerase III (POLR3) complex, as well as in *POLR1C*, also encoding a POLR3 subunit, are responsible for this disease.<sup>6-11</sup> With the identification of the causative genes, patients with suggestive clinical or MRI picture can undergo genetic testing, confirming the diagnosis.<sup>12</sup> The MRI pattern of POLR3-related leukodystrophy is suggestive and characterized by diffuse hypomyelination associated with relative T2 hypointensity of the ventrolateral thalamus, globus pallidus, optic radiation, corticospinal tract at the level of the internal capsule and dentate nucleus, cerebellar atrophy, and thinning of the corpus callosum.<sup>12-14</sup> Recognition of this pattern was proven effective in detecting patients with 4H leukodystrophy caused by *POLR3A-B* or *POLR1C* mutations and is therefore

\*These authors contributed equally to this work.

‡Dual last authors.

From the Laboratory of Neurogenetics of Motion (R.L.P.) and Department of Neuroradiology (R.L.P.), Montreal Neurological Institute and Hospital, and the Departments of Neurology and Neurosurgery (R.L.P., L.T.T., K.G., G.B.) and Pediatrics (R.L.P., L.T.T., K.G., G.B.), McGill University, Montreal, Canada; Departments of Child Neurology (F.K.C., M.S.v.d.K., N.I.W.) and Clinical Genetics (F.K.C., R.v.S.), VU University Medical Center, Amsterdam, the Netherlands; Department of Genetics (K.Ö.) United Laboratories, Tartu University Hospital, Tartu; Department of Pediatrics (K.Ö.), University of Tartu, Estonia; Institute of Human Genetics (T.H.), Technische Universität München; Institute of Human Genetics (T.H.), Helmholtz Zentrum München, Munich, Germany; Department of Neurology (E.W.), Birmingham Children's Hospital, UK; Department of Neurology (D.T.), University Clinic Essen, University of Duisburg-Essen, Germany; Department of Child and Adolescent Neurology (H.M.), Institute of Mother and Child, Warsaw, Poland; Department of Child Neurology (B.T.P.), AMC Academic Medical Center, Amsterdam, the Netherlands; West Midlands Regional Clinical Genetics Unit (C.P., H.C.), Birmingham Women's Hospital, UK; Departments of Pediatrics (T.A.) and Medical Genetics (H.O.), Faculty of Medicine (F.O.), Ege University, Izmir, Turkey; Department of Neurology (A.V.), Children's National Health System, Washington, DC; Neuroscience Campus Amsterdam (M.S.v.d.K., N.I.W.), the Netherlands; and Department of Medical Genetics (G.B.), Montreal Children's Hospital, McGill University Health Center, Montreal, Canada.

Go to Neurology.org for full disclosures. Funding information and disclosures deemed relevant by the authors, if any, are provided at the end of the article.

**Table 1** POLR3A and POLR3B mutations identified in our cohort

Family	Gene	Status	gDNA	Chromosomal location	Protein	Region	Previously reported	MAF	Method	Clinical features	MRI features
1	POLR3A	C Het	c.1048+1G>A c.1289+3A>C	chr10:79781617C>T chr10:79778917T>G	— —	Intron 7 Intron 9	No No	NA NA	Gene testing	A, HD, SSt	PLIC
2	POLR3A	Hom	c.2710 G>A	chr10:79753032C>T	G904R	Exon 20	No	8.24E-06	Gene testing	A, HD, DD, Sp	PLIC
3	POLR3A	C Het	c.1771-6C>G	chr10:79769439C>G	—	Intron 13	rs115020338	3.30E-05	Gene testing	A, HD, DD, Sp	PLIC
4	POLR3B	C Het	c.3205C>T c.2084-6A>G	chr10:79744965G>A chr12:106848274A>G	R1069W —	Exon 24 Intron 19	No No	— 0.0001769	Gene testing	A, M, DD	CA
5	POLR3A	C Het	c.2302C>T c.2381A>C	chr12:106850924C>T chr10:79760831T>G	R768C Q794P	Exon 22 Exon 18	rs371453512 No	2.48E-05 0.0001237	WES	A, M, DD, Sp	CA
6	POLR3A	C Het	c.-35C>G c.2381A>C	chr10:79789200 G>C chr10:79760831T>G	— Q794P	Exon 1 (5'UTR) Exon 18	rs201700756 No	0.00128 0.0001237	WES	A, M, DD, Sp	CA
7	POLR3B	C Het	c.-35C > G c.1244T>C	chr10:79789200 G>C chr12:10682117T>C	— M415T	Exon 1 (5'UTR) Exon 13	rs201700756 rs199504211	0.00128 0.0006182	WES	A, M, DD, SSt	CA
8	POLR3A	C Het	c.2774C>T c.1909 + 22G>A	chr12:106889893C>T chr10:79769273C>T	P925L —	Exon 24 Intron 14	No rs191875469	8.24E-06 0.001326	Gene testing	A, HD	PLIC
			c.2549A>G	chr10:79759806T>C	H650R	Exon 19	No	NA			

Abbreviations: A = ataxia or other cerebellar signs; C Het = compound heterozygous; CA = cerebellar atrophy; DD = developmental delay; HD = hypodontia or dental abnormalities; Hom = homozygous; M = myopia; MAF = minor allele frequency; NA = not available; PLIC = abnormal signal of the posterior limb of the internal capsule; Sp = spasticity; SSt = short stature; WES = whole-exome sequencing.  
<sup>a</sup>Siblings.

used to orient the diagnostic process.<sup>12–14</sup> Patients without this pattern showing nonspecific hypomyelination are unlikely to carry mutations in *POLR3A* or *POLR3B*.<sup>15</sup>

**METHODS** We performed a multi-institutional cross-sectional observational study of the clinical, radiologic, and molecular data of patients who fulfilled the following inclusion criteria: presence of recessive *POLR3A* or *POLR3B* mutations and absence of typical POLR3-related MRI features.<sup>13,14</sup>

We identified 8 patients from 7 nonconsanguineous families, all of Caucasian ethnicity, fulfilling these criteria. Five participants underwent *POLR3A* and *POLR3B* sequencing because they presented suggestive clinical features (hypodontia or dental abnormalities, short stature, and myopia, either associated or not). In 3 participants from 2 families, *POLR3A* and *POLR3B* mutations were identified by whole-exome sequencing (WES). For all families for which DNA was available, segregation was verified. Analysis for the potential pathogenicity of novel mutations was performed, including in silico analysis. For the novel splicing mutations, we sequenced cDNA when RNA was available.

MRI were reviewed collegially by our team. At least axial T2-weighted and sagittal T1- or T2-weighted images were available.

**Standard protocol approvals, registrations, and patient consents.** The institutional review boards of each participating institution approved the use of clinical data for the study.

**RESULTS Mutation findings.** Six participants carried mutations in *POLR3A* and 2 in *POLR3B* (table 1). Among the 13 mutations identified, 8 were novel, and not reported in public databases (Exome Variant Server, NHLBI GO Exome Sequencing Project [ESP], Seattle, WA [http://evs.gs.washington.edu/EVS/] [June 2015]; Exome Aggregation Consortium [ExAC], Cambridge, MA [http://exac.broadinstitute.org] [June 2015]). Five mutations were intronic and affected a splice site or induced a new donor site. All new mutations were rare and predicted to be pathogenic by in silico tools<sup>16–18</sup> (table e-1 on the *Neurology*<sup>®</sup> Web site at Neurology.org) besides for the c.-35C>G change, which had been reported in homozygous state in 2 out of over 60,000 participants (ExAC [http://exac.broadinstitute.org] [July 2015]) in patients 5 and 6. Segregation analysis in this family revealed that each of the parents carried one variant, and the healthy brother the paternal variant. WES failed to uncover other possible causal variants. Table 1 reports detailed information about the genetic status and mutations found in our cohort.

**Clinical findings.** Age at onset ranged from 6 weeks to 10 years (mean age at onset 52.3 months). The symptoms at disease onset were gait ataxia, dysarthria, and tremor in 3 participants (cases 1, 4, and 8). Two participants (cases 2 and 3) presented with spasticity and diplegic gait. The patient with the earliest disease onset, at 1.5 months, presented with failure to thrive (case 7). Clinical examination revealed ataxia of

variable severity in all patients; cerebellar tremor was documented in 4 participants (cases 1, 2, 3, and 4); pyramidal signs and spasticity were present in 4 participants (cases 2, 3, 5, and 6). One patient had severe dystonic tremor (case 3) (table 1).

Extraneurologic features were found in 6 patients. Specifically, 4 participants had hypodontia, delayed dentition, or other dental abnormalities (cases 1, 2, 3, and 8) suggestive of POLR3-related leukodystrophy. Two participants presented short stature (cases 1 and 7), and 4 had myopia (cases 4, 5, 6, and 7), both frequent findings in patients with mutations in *POLR3A* or *POLR3B*.

**MRI findings.** Mean age at the last MRI was 15 years (range 4–35 years). We identified 2 distinct MRI patterns (figures 1, 2, e-1, and e-2). Four participants, all with *POLR3A* mutations, presented a selective involvement of the corticospinal tracts, which was particularly evident at the level of the posterior limb of the internal capsule as T2-hyperintense signal (cases 1, 2, 3, and 8) (figures 1 and e-1). In the other 4 patients (2 with *POLR3A* and 2 with *POLR3B* mutations), moderate to severe cerebellar atrophy was variably associated with nonspecific T2-hyperintense

white matter abnormalities, as specified below, or thinning of the corpus callosum (figures 2 and e-2) (cases 4, 5, 6, and 7). We documented focal, partially confluent, T2-hyperintense white matter abnormalities located in the deep frontal and parietal white matter, suggesting partial hypomyelination, in 5 participants (cases 2, 3, 4, 5, and 6), while the remaining 3 presented adequate myelination for age.

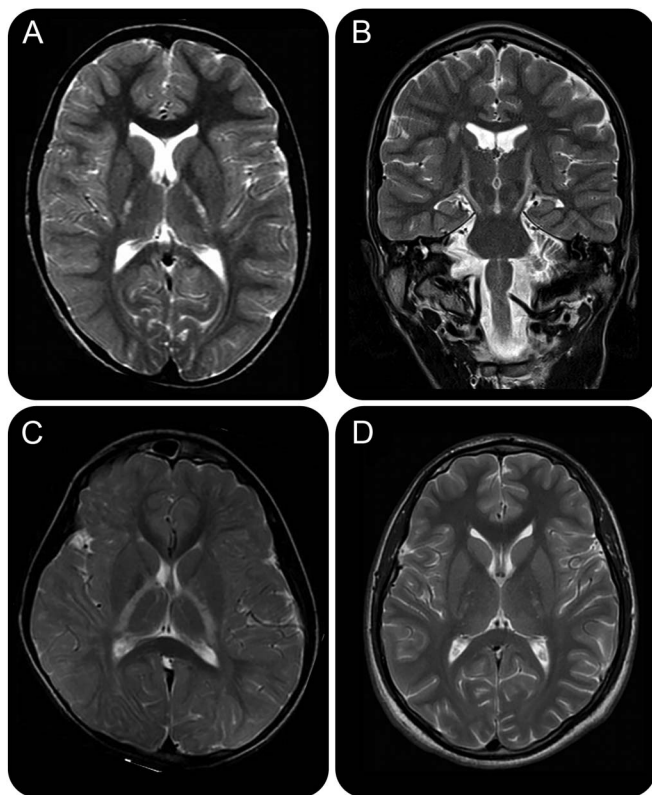
**DISCUSSION** Our work broadens the MRI spectrum of POLR3-related leukodystrophy by describing 2 new MRI patterns in this disease that has been known as a hypomyelinating disorder. Our results indicate that diffuse hypomyelination is not an obligatory feature. We also documented the presence of 6 *POLR3A* and 2 *POLR3B* mutations not reported before in public databases. Interestingly, 5 of the 13 mutations in our cohort were noncoding, 4 predicted to affect splicing. Pathogenicity of the variant in the 5' untranslated region in patients 5 and 6 could not be unambiguously resolved as it had been reported in homozygous state in 2 participants in a large database. However, this variant is situated in a terminal oligopyrimidine tract (TOP). The change of a pyrimidine (C) for a purine (G) shortens the TOP, and it has been shown that deletions or substitutions in this region result in unregulated translation.<sup>19,20</sup> Its effect might be mild, and homozygous carriers indeed might be unaffected, but in combination with a pathogenic mutation this variant could lead to disease. Segregation analysis and the absence of other possible causal variants in WES in this family indeed support a causal role for this variant, as does the identification of other families with isolated cerebellar atrophy.

A specific involvement of the corticospinal tracts, particularly evident at the level of the internal capsule as T2-hyperintense signal, was the most striking finding in a subgroup of patients. Interestingly, in typical cases, more commonly with *POLR3B* mutations,<sup>12</sup> the corticospinal tracts are usually one of the better myelinated structures.

The second pattern is the presence of cerebellar atrophy in the absence of diffuse hypomyelination. Cerebellar atrophy was previously known to be associated with *POLR3A* or *POLR3B* mutations in more than 80% of the participants, always in combination with diffuse hypomyelination.<sup>12–14,21</sup>

Focal, partly confluent T2-hyperintense white matter changes were present in some participants of both groups and located in the deep frontal and parietal white matter. The signal intensity of the abnormal areas corresponds to the one seen in hypomyelination, focal hypomyelination therefore being the most likely interpretation. These changes are obviously reminiscent of the classical MRI of 4H leukodystrophy, but sufficiently different to make a straightforward diagnosis

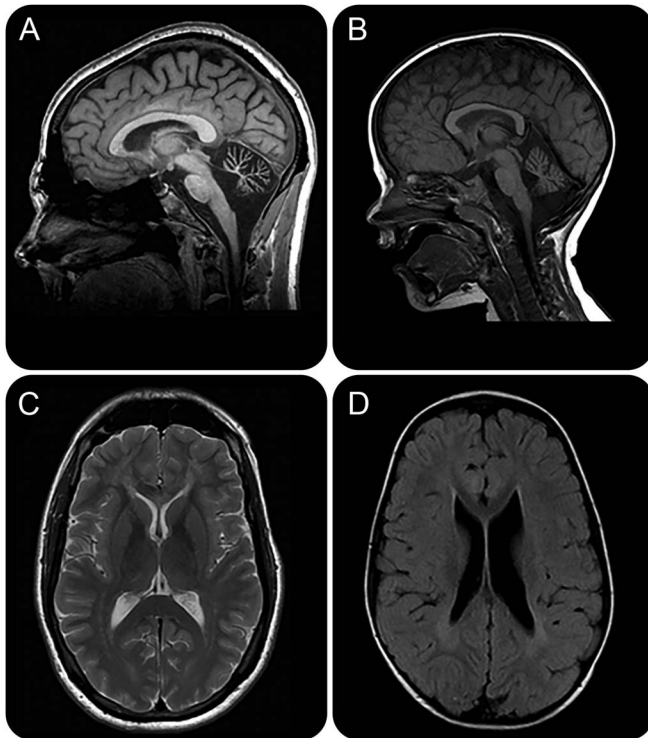
**Figure 1** Involvement of the corticospinal tracts



Axial (A, C, D) and coronal (B) T2-weighted images in patients 1 (A, B), 1 (C), and 8 (D) with *POLR3A* mutations show the presence of bilateral and symmetric T2-hyperintense signal at the level of the posterior limb of the internal capsules. Incomplete hypomyelination is seen in (B).



**Figure 2** Cerebellar atrophy



(A, B) Sagittal T1-weighted images from participant 4 with *POLR3B* (A) and participant 5 with *POLR3A* (B) mutations show the presence of severe (A) and moderate cerebellar atrophy. (C, D) Axial T2-weighted and T2-fluid-attenuated inversion recovery images of the patients presented respectively in (A, B) show the presence of partial hypomyelination.

challenging. Our results confirm white matter involvement when *POLR3A* or *POLR3B* is mutated; however, different pathogenic processes could be responsible for the variable and expanded MRI phenotypes of brain abnormalities associated with *POLR3A* or *POLR3B* mutations. Further insight into the role of *POLR3* in myelin formation and maintenance as well as in axonal integrity is needed to explain the heterogeneity of the radiologic patterns.

The diagnosis of *POLR3*-related leukodystrophy relies both on MRI findings and clinical signs. In our cohort, the presence of typical extraneurologic features oriented the clinicians towards the testing of *POLR3A* and *POLR3B* genes in 5 participants. Therefore, our study confirms the importance of the classical clinical criteria—particularly hypodontia and hypogonadotropic hypogonadism—in the diagnostic process of *POLR3*-related disorders, especially when cardinal MRI features are lacking. WES allowed the discovery of *POLR3A* and *POLR3B* mutations in the remaining cases, thus highlighting the role of next-generation sequencing in expanding the phenotypes of already known disorders.

#### AUTHOR CONTRIBUTIONS

Roberta La Piana collected, analyzed, and interpreted patient data, reviewed the article, and wrote the draft of the manuscript. Ferdy K.

Cayami collected, analyzed, and interpreted patient data, reviewed the article, and wrote the draft of the manuscript. Luan T. Tran collected, analyzed, and interpreted patient data and reviewed the article. Kether Guerrero was responsible for molecular genetic analysis and reviewed the article. Rosalina van Spaendonk was responsible for molecular genetic analysis and reviewed the article. Katrin Öunap collected, analyzed, and interpreted patient data and reviewed the article. Sander Pajusalu collected, analyzed, and interpreted patient data, reviewed the article. Tobias Haack was responsible for molecular genetic analysis, reviewed the article. Evangeline Wassmer collected, analyzed, and interpreted patient data and reviewed the article. Dagmar Timmann collected, analyzed, and interpreted patient data and reviewed the article. Hanna Mierzewska collected, analyzed, and interpreted patient data and reviewed the article. Bwee T. Poll-Thé collected, analyzed, and interpreted patient data and reviewed the article. Chirag Patel collected, analyzed, and interpreted patient data and reviewed the article. Helen Cox collected, analyzed, and interpreted patient data and reviewed the article. Tahir Atik collected, analyzed, and interpreted patient data and reviewed the article. Huseyin Onay collected, analyzed, and interpreted patient data and reviewed the article. Ferda Ozkinay collected, analyzed, and interpreted patient data and reviewed the article. Adeline Vanderver collected, analyzed, and interpreted patient data and reviewed the article. Marjo S. van der Knaap collected, analyzed, and interpreted patient data and reviewed the article. Nicole I. Wolf designed and supervised the study, collected data, and reviewed the article. Genevieve Bernard designed and supervised the study, collected data, and reviewed the article.

#### ACKNOWLEDGMENT

The authors thank the participants and their families for their support and cooperation; and the McGill University and Genome Quebec Innovation Center.

#### STUDY FUNDING

R.L.P. has received a Doctoral Award from the Fonds de recherche du Québec—Santé (FRQS) and has been supported by the Fondation Monaco. F.K.C. is a recipient of the Directorate of Higher Education Overseas Scholarship—Dikti Scholarship, Ministry of National Education, Republic of Indonesia. G.B. has received a Research Scholar Junior 1 award from the Fonds de Recherche du Québec en Santé (FRQS). N.I.W. and M.S.v.d.K. are supported by ZonMw (TOP grant 91211005). This work was supported by Canadian Institute for Health Research grant MOP-G-287547 and the Réseau de Médecine Génétique Appliquée du FRQS to G.B. T.H. was supported by the BMBF through the Juniorverbund in der Systemmedizin “mitOmics” (FKZ 01ZX1405C).

#### DISCLOSURE

R. La Piana, F. Cayami, L.T. Tran, K. Guerrero, R. van Spaendonk, K. Öunap, S. Pajusalu, and T. Haack report no disclosures relevant to the manuscript. E. Wassmer received honoraria for speaking/travel costs from BiogenIdec, Teva, Genzyme, Shire, UCB, and Merck Serono. She is an investigator in trials with BiogenIdec, Sanofi, and Novartis. Her MS research projects have been funded by the UK MS Society, Action. D. Timmann sits on the editorial board of *The Cerebellum* and *Cerebellum & Ataxias* (unpaid positions). H. Mierzewska, B. Poll-The, C. Patel, H. Cox, T. Atik, H. Onay, and F. Ozkinay report no disclosures relevant to the manuscript. A. Vanderver has acted on an advisory board for Shire Pharmaceuticals as well as an unpaid consultant for Stem Cells Inc. M.S. van der Knaap reports no disclosures relevant to the manuscript. N.I. Wolf serves as communicating editor of the *Journal of Inherited Metabolic Disease* and as editor for *Neuropediatrics*, and is a member of the editorial board of *Neurology*<sup>®</sup>, all without payment. G. Bernard has received compensation from Actelion Pharmaceuticals, Genzyme, Shire, and Santhera Pharmaceuticals (speaker's honoraria and for serving on scientific advisory boards). Go to Neurology.org for full disclosures.

Received August 26, 2015. Accepted in final form January 14, 2016.

## REFERENCES

1. Wolf NI, Harting I, Boltshauser E, et al. Leukoencephalopathy with ataxia, hypodontia, and hypomyelination. *Neurology* 2005;64:1461–1464.
2. Wolf NI, Harting I, Innes AM, et al. Ataxia, delayed dentition and hypomyelination: a novel leukoencephalopathy. *Neuropediatrics* 2007;38:64–70.
3. Bernard G, Thiffault I, Tetreault M, et al. Tremor-ataxia with central hypomyelination (TACH) leukodystrophy maps to chromosome 10q22.3-10q23.31. *Neurogenetics* 2010;11:457–464.
4. Atrouni S, Daraze A, Tamraz J, Cassia A, Caillaud C, Megarbane A. Leukodystrophy associated with oligodontia in a large inbred family: fortuitous association or new entity? *Am J Medgeneta* 2003;118A:76–81.
5. Sasaki M, Takanashi J, Tada H, Sakuma H, Furushima W, Sato N. Diffuse cerebral hypomyelination with cerebellar atrophy and hypoplasia of the corpus callosum. *Brain Dev* 2009;31:582–587.
6. Daoud H, Tetreault M, Gibson W, et al. Mutations in POLR3A and POLR3B are a major cause of hypomyelinating leukodystrophies with or without dental abnormalities and/or hypogonadotropic hypogonadism. *J Medical Genetics* 2013;50:194–197.
7. Gutierrez M, Thiffault I, Guerrero K, et al. Large exonic deletions in POLR3B gene cause POLR3-related leukodystrophy. *Orphanet Journal Rare Diseases* 2015;10:69.
8. Bernard G, Chouery E, Putorti ML, et al. Mutations of POLR3A encoding a Catalytic subunit of RNA polymerase Pol III cause a recessive hypomyelinating leukodystrophy. *Am J Hum Genet* 2011;89:415–423.
9. Tetreault M, Choquet K, Orcesi S, et al. Recessive mutations in POLR3B, encoding the second largest subunit of Pol III, cause a rare hypomyelinating leukodystrophy. *Am Journal Human Genetics* 2011;89:652–655.
10. Saitu H, Osaka H, Sasaki M, et al. Mutations in POLR3A and POLR3B encoding RNA Polymerase III subunits cause an autosomal-recessive hypomyelinating leukoencephalopathy. *Am Journal Human Genetics* 2011;89:644–651.
11. Thiffault I, Wolf NI, Forget D, et al. Recessive mutations in POLR1C cause a leukodystrophy by impairing biogenesis of RNA polymerase III. *Nat Communications* 2015;6:7623.
12. Wolf NI, Vanderver A, van Spaendonk RM, et al. Clinical spectrum of 4H leukodystrophy caused by POLR3A and POLR3B mutations. *Neurology* 2014;83:1898–1905.
13. Steenweg ME, Vanderver A, Blaser S, et al. Magnetic resonance imaging pattern recognition in hypomyelinating disorders. *Brain* 2010;133:2971–2982.
14. La Piana R, Tonduti D, Gordish Dressman H, et al. Brain magnetic resonance imaging (MRI) pattern recognition in Pol III-related leukodystrophies. *J Child Neurol* 2014;29:214–220.
15. Cayami FK, La Piana R, van Spaendonk RM, et al. Polr3a and POLR3B mutations in Unclassified hypomyelination. *Neuropediatrics* 2015;46:221–228.
16. Schwarz JM, Cooper DN, Schuelke M, Seelow D. MutationTaster2: mutation prediction for the deep-sequencing age. *Nat Methods* 2014;11:361–362.
17. Adzhubei IA, Schmidt S, Peshkin L, et al. A method and server for predicting damaging missense mutations. *Nat Methods* 2010;7:248–249.
18. Ng PC, Henikoff S. Predicting deleterious amino acid substitutions. *Genome Research* 2001;11:863–874.
19. Cardinali B, Di Cristina M, Pierandrei-Amaldi P. Interaction of proteins with the mRNA for ribosomal protein L1 in *Xenopus*: structural characterization of in vivo complexes and identification of proteins that bind in vitro to its 5'UTR. *Nucleic Acids Research* 1993;21:2301–2308.
20. Kaspar RL, Kakegawa T, Cranston H, Morris DR, White MW. A regulatory cis element and a specific binding factor involved in the mitogenic control of murine ribosomal protein L32 translation. *J Biol Chem* 1992;267:508–514.
21. Takanashi J, Osaka H, Saitu H, et al. Different patterns of cerebellar abnormality and hypomyelination between POLR3A and POLR3B mutations. *Brain Development* 2014;36:259–263.

## BrainPAC

BrainPAC is the American Academy of Neurology's (AAN) federal political action committee.

- Since its inception, more than 3,000 AAN members have contributed \$1,800,000 to BrainPAC.
- BrainPAC contributed \$620,000 to candidates running for Congress in 2014.
- During the 2014 congressional campaign, 89 percent of candidates supported by BrainPAC won their elections.

BrainPAC supports both Democrats and Republicans who support issues important to the practice of neurology and the care of patients with neurologic conditions. US AAN members are invited to learn more at [BrainPAC.org](http://BrainPAC.org).