

## Original Article

# Cytomegalovirus induces strong antileukemic effect in acute myeloid leukemia patients following sibling HSCT without ATG-containing regimen

Xiebing Bao<sup>1,2,3\*</sup>, Qian Zhu<sup>4\*</sup>, Shengli Xue<sup>1,2,3</sup>, Xiaohui Hu<sup>1,2,3</sup>, Xiao Ma<sup>1,2,3</sup>, Feng Chen<sup>1,2,3</sup>, Suning Chen<sup>1,2,3</sup>, Aining Sun<sup>1,2,3</sup>, Depei Wu<sup>1,2,3</sup>, Jianhua Yu<sup>5</sup>, Xiaojin Wu<sup>1,2,3</sup>, Huiying Qiu<sup>1,2,3</sup>

<sup>1</sup>Jiangsu Institute of Hematology, The First Affiliated Hospital of Soochow University, Suzhou, China; <sup>2</sup>Collaborative Innovation Center of Hematology, Soochow University, Suzhou, China; <sup>3</sup>Suzhou Institute of Blood and Marrow Transplantation, Suzhou, China; <sup>4</sup>Department of Hematology, 100th Hospital of People's Liberation Army, Suzhou, China; <sup>5</sup>Division of Hematology, Department of Internal Medicine, College of Medicine, The Ohio State University, Columbus, Ohio 43210, USA. \*Equal contributors.

Received November 12, 2015; Accepted December 3, 2015; Epub February 15, 2016; Published February 29, 2016

**Abstract:** A considerable number of studies have demonstrated that cytomegalovirus (CMV) reactivation after allogeneic hematopoietic stem cell transplantation (Allo-HSCT) could enforce graft-versus leukemia (GVL) effect in acute myeloid leukemia (AML) patients. However, the use of antithymocyte globulin (ATG) as part of graft-versus-host disease (GVHD) prophylaxis may dampen this beneficial effect of CMV replication. In this context, we retrospectively analyzed the effect of CMV reactivation on relapse, survival and prognosis in a total of 227 AML patients who received a myeloablative (MA) conditioning regimen at a single research center between January 2010 and April 2013. Of these 227 patients, 110 cases received non-ATG-containing regimens and 117 cases received ATG-containing regimens. CMV reactivation occurred in 45 patients (41%) among non-ATG regimen group and 73 patients (62%) among ATG regimen group ( $P = 0.001$ ). At a median time to follow-up of 27.5 months, a lower risk of cumulative relapse incidence associated with CMV reactivation was observed in non-ATG group in multivariate analyses (OR 0.28, 95% CI 0.10-0.79;  $P = 0.016$ ). However, CMV reactivation after transplantation did not significantly decrease the cumulative incidence of relapse in our ATG group (OR 0.28, 95% CI 0.10-0.79;  $P = 0.016$ ). Collectively, our results demonstrate that in AML patients following sibling HSCT, the CMV-induced beneficial effect on relapse occurs only in the MA regimens containing no ATG, although ATG promotes CMV reactivation.

**Keywords:** Acute myeloid leukemia, hematopoietic stem cell transplantation, CMV reactivation, relapse, antithymocyte globulin, myeloablative regimen, antileukemic effect

## Introduction

Recently, several studies demonstrated that a potential reduction in relapse risk of acute myeloid leukemia (AML) patients could benefit from cytomegalovirus (CMV) reactivation after allogeneic hematopoietic stem cell transplantation (allo-HSCT) [1-5]. This beneficial effect of CMV replication could be affected by the intensity of the conditioning regimen [6], and the use of antithymocyte globulin (ATG) [7] or alemtuzumab [8] as the prophylaxis of graft-versus-host disease (GVHD). The graft-versus leukemia (GVL) effect induced by CMV reactivation may due to a subsequent natural killer (NK) cell or T-cell immune response to CMV reactivation after transplantation [2, 9-11]. Based on these

results, patients with AML who underwent myeloablative (MA) conditioning regimens might significantly benefit from this GVL effect induced by CMV reactivation [6]. At present, very few studies have reported that the subsequent influence of ATG on this CMV-induced antileukemic effect. Here we retrospectively analyzed the impact of ATG-containing MA regimens on the CMV-induced GVL effect in over 200 AML patients after allo-HSCT.

## Material and methods

### Study population

A retrospective study was conducted in the First Affiliated Hospital of Soochow University in

## Lower relapse rate of AML after CMV reactivation

**Table 1 .** Transplant recipients' characteristics classified by CMV reactivation

Variable	ALL patients	CMV reactivation		P value
		No	Yes	
No. of patients	227	109	118	
Male patients	118 (52%)	54 (46%)	64 (54%)	0.479
Median age, years (range)	35 (2-63)	37 (2-59)	32.5 (3-63)	0.034
Risk stratification				0.803
Favorable	28 (12%)	14 (50%)	14 (50%)	
Intermediate	128 (56%)	59 (46%)	69 (54%)	
Adverse	71 (31%)	36 (51%)	35 (49%)	
Disease phase at HSCT				0.931
CR1	166 (73%)	80 (48%)	86 (52%)	
≥ CR2 or active	61 (27%)	29 (48%)	32 (52%)	
WBC				0.923
< 100000/MCL	188 (83%)	90 (48%)	98 (52%)	
≥ 100000/MCL	39 (17%)	19 (49%)	20 (51%)	
Donor status				0.004
Sib	110 (49%)	65 (59%)	45 (41%)	
URD	57 (25%)	23 (40%)	34 (60%)	
Haplo	60 (26%)	21 (35%)	39 (65%)	
Stem cell source				0.255
BM	50 (22%)	20 (40%)	30 (60%)	
PBSC	125 (55%)	66 (53%)	59 (47%)	
PBSC+BM	52 (23%)	23 (44%)	29 (56%)	
Conditioning regimen				0.723
BU/CY	211 (93%)	102 (48%)	109 (52%)	
TBI/CY	16 (7%)	7 (44%)	9 (56%)	
ATG regimen				0.001
Yes	117 (52%)	44 (38%)	73 (62%)	
No	110 (48%)	65 (59%)	45 (41%)	
Acute GVHD				0.039
Grade: 0-1	134 (59%)	72 (54%)	62 (46%)	
Grade: 2-4	93 (41%)	37 (40%)	56 (60%)	
Chronic GVHD				0.673
Present	122 (54%)	57 (47%)	65 (53%)	
Absent	105 (46%)	52 (50%)	53 (50%)	

CMV: cytomegalovirus; HSCT: hematopoietic stem cell transplantation; CR: complete remission; WBC: whole blood count; Sib: HLA-identical sibling; Haplo: related haploidentical; URD: unrelated donor; BM: bone marrow; PBSC: peripheral blood stem cell; BU: busulfan; CY: cyclophosphamide; TBI: total body irradiation; ATG: antithymocyte globulin; GVHD: graft-versus-host disease.

plantation were conformed to the inclusion criteria; (3) peripheral blood stem cells (PBSC), bone marrow (BM) or mix graft (MG) (PBSC plus BM) was obtained as hematopoietic stem cells; (4) patients with regular monitoring of CMV reactivation after transplantation; (5) except for transplant recipients after secondary transplantation; and (6) patients used prophylactic donor lymphocyte infusion after HSCT before disease relapse were also excluded from this study.

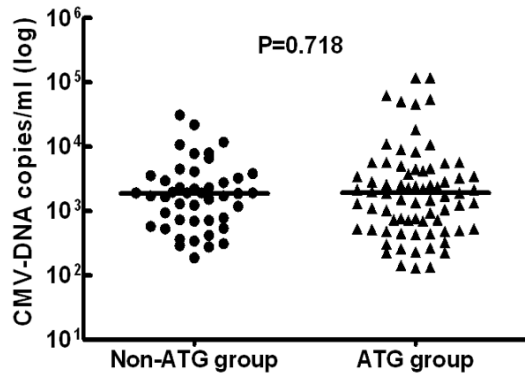
One hundred and ten patients received transplantation from HLA-identical sibling HSCT (Sib-HSCT), while 60 cases underwent related HLA-haploidentical HSCT (Haplo-HSCT) and 57 cases underwent unrelated HSCT (URD-HSCT). All patients received a myeloablative (MA) conditioning regimen consisting of busulfan (BU) plus cyclophosphamide (CY), whereas total body irradiation (TBI) plus CY was chosen as a substitute in cases with extramedullary leukemic infiltration pre-transplantation. Prophylaxis of GVHD consisted of a combination of cyclosporine (CSA) and short-term methotrexate (MTX) in all transplant recipients. ATG at a dose of 2.5 mg/kg daily from day -6 to -3 and mycophenolate mofetil (MMF) were performed as were performed as extra GVHD prophylaxis in patients underwent Haplo-HSCT or URD-HSCT. The characteristics of all patients are summarized in **Table 1**.

China, including a serial group of 227 patients with AML undergoing HSCT between January 2010 and April, 2013. The eligibility criteria for all patients with AML was selected as follows: (1) all transplant recipients were diagnosed as de novo AML before HSCT, except for acute promyelocytic leukemia (APL); (2) transplant recipients with a CMV seropositive status pre-trans-

### *Diagnostic method and standard of CMV reactivation*

Quantitative real-time PCR test was chosen as the method for detection of CMV reactivation, and the Diagnostic Kit for Quantification of Human CMV DNA (DaAn Gene co. Ltd of Sun Yat-sen University in Guangzhou, China) was

## Lower relapse rate of AML after CMV reactivation



**Figure 1.** The initial number copies of CMV-DNA in patients without and with use of ATG, and t test was performed to examine the differences between these two groups.

performed as the diagnostic method. CMV reactivation was defined as any two consecutive qPCR tests of blood plasma samples with a CMV viral load of  $\geq 100$  copies/mL.

### Management of CMV reactivation after HSCT

The results of CMV assays in all transplant recipients and donors were negative before transplantation. CMV reactivation evaluation was monitored weekly or biweekly during the first 100 days after transplant, monthly up to 1 year, and on conventional monitoring after the first year. All transplant recipients underwent a standard induction course of ganciclovir (5 mg/kg, twice daily; from day -9 to -2) pre-transplantation, and received acyclovir as prophylactic antiviral therapy from day -1 to 1 year after transplantation. Pre-emptive therapy for CMV reactivation was based on either ganciclovir or foscarnet due to severe cytopenia. After two weeks of induction antiviral therapy, maintenance treatment was followed until two sequential surveillances were negative.

### Variable definitions

The risk stratification of AML before first induction therapy was classified both by cytogenetics and molecular abnormality, using the conventional distinction Standard [12]. The assessment of acute GVHD (aGVHD) and chronic GVHD (cGVHD) was performed according to the commonly accepted categories [13, 14]. Bone marrow examination was executed twice a month during 100 days post-HSCT and once every 3 months thereafter, or additional reexamination

if necessary. Disease relapse was defined using the conventional criteria [15], while appearance of morphologically positive blasts in the cerebrospinal fluid was defined as extramedullary relapse. Non-relapse mortality (NRM) was defined as death from all causes except for relapse. Overall survival (OS) was defined as the time from transplantation to death or to the last observation.

### Statistical analysis

The chi-square test or Fisher exact test was used to compare categorical variables of patients, while the t test was used for continuous ones. The Gray test [16] was implemented to estimate the cumulative incidence of relapse (CIR) in patients classified by CMV reactivation for statistical difference, comparing the event of relapse with a competing event (NRM). Fine and Gray competing risk regression model [17] was performed as multivariate analysis. The control variables for multivariate analysis were classified as follows: risk stratification (adverse versus intermediate versus favorable), disease phase pre-transplantation ( $\geq$  CR2 or active versus CR1), white blood count (WBC) before first induced chemotherapy ( $\geq 100000$ /MCL versus  $< 100000$ /MCL), degrees of aGVHD (grade 2-4 versus grade 0-1), occurrence of cGVHD (present versus absent), and CMV reactivation (yes versus no).

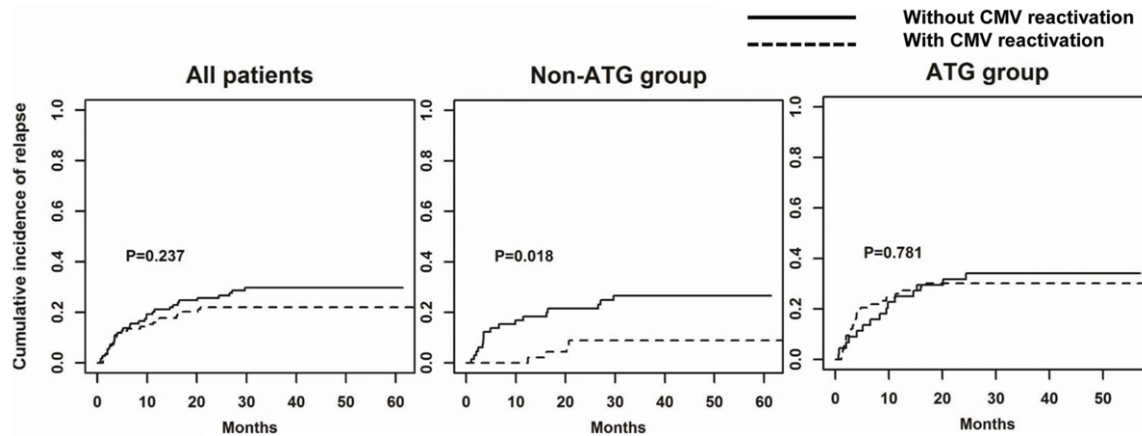
Kaplan Meier method was used to estimate OS, comparing the two groups by the log-rank test. Cox proportional hazards model and the Wald test were also used in analyzing the risk factors of OS and calculating 95% confidence interval (CI); risk stratification, the disease phase, initial WBC count, the occurrence of aGVHD/cGVHD, and the CMV reactivation status were treated as time-dependent variables. All tests were two-sided and the *p* values were at the routine 5% significance level. Data were analyzed by R 3.2.1 package *cmprsk* (The R Foundation for Statistical Computing, Vienna-A; [www.R-project.org](http://www.R-project.org)).

### Results

*CMV reactivated more frequently in ATG group than that in non-ATG group*

**Table 1** shows the clinical characteristics of 227 AML patients with or without CMV reactivation after allo-HSCT; with a median age at

## Lower relapse rate of AML after CMV reactivation



**Figure 2.** Cumulative incidence of relapse classified by CMV reactivation in all patients, Non-ATG group, and ATG group. The Gray test was performed to examine the differences between patients with and without CMV reactivation.

transplantation of 35 years old (range 2-63). The median follow-up time for all patients was 27.5 months (range 0-65) through April 30th 2015. A total of 118 patients (52%) experienced CMV reactivation after a median time of 54 days (range 5-257), and 92% of which (109/118) developed CMV reactivation during the first 100 days after HSCT. Respectively, the median number copies of CMV-DNA in non-ATG group were 1910 copies/mL (range 190-31000), compared with 1910 copies/mL (range 129-117000) in ATG group (**Figure 1**,  $P = 0.718$ ).

Univariate analysis showed that donor status was the vital determinant of CMV reactivation: 41% in Sib-HSCT, 60% in URD-HSCT, and 65% in Halpo-HSCT ( $P = 0.004$ ). Furthermore, CMV reactivated more frequently in the ATG group after Haplo- or URD-HSCT. CMV reactivation happened in 45 of 110 (41%) patients among non-ATG regimens group from Sib-HSCT, compared with 73 of 117 (62%) patients in ATG-containing regimens group ( $P = 0.001$ ). Similarly, median ages and the presence of aGVHD grade  $\geq 2$  had an important impact on CMV reactivation. In addition, there was also no statistical difference in classification by gender, risk stratification, disease phase, WBC count, stem cell source, conditioning regimen, or the occurrence of cGVHD.

### *CMV reactivation led to a lower relapse rate in non-ATG group*

Among the 227 patients, 58 cases (26%) had relapsed by the end of follow-up period. The median time to relapse was 149 days (range

19 to 892). Respectively, the CIR was 21.1%, 25.7%, and 29.7% in cases without CMV reactivation, compared with 16.1%, 22.0%, and 22.0% for those with CMV reactivation at 1 year, 2 years, and 3 years post-transplantation (**Figure 2**). Although there is no statistically significant difference ( $P = 0.237$ ), a trend towards a lower relapse rate could still be seen in patients with CMV reactivation. Meanwhile, 10 patients with CMV reactivation relapsed during the first 100 days after HSCT, of which 3 cases relapsed before CMV replication. When considering the multivariate analyses, no difference was shown in the CIR stratified by CMV reactivation (OR 0.78, 97.5% CI 0.46-1.31;  $P = 0.340$ ). The occurrence of cGVHD ( $P < 0.001$ ) and an adverse phase at transplantation ( $\geq$  CR2/active) ( $P < 0.001$ ) were only two prognostic factors of disease relapse (**Table 2**).

Based on conditioning regimens with or without ATG, we divided all patients into 2 groups. In the subgroup analysis, differences in relapse in conjunction with CMV reactivation status were evaluated in non-ATG and ATG groups. In non-ATG cohort from Sib-HSCT, 21 of 110 cases (19.1%) relapsed at a median time of 297 days (range 29-892) after transplantation. Respectively, the CIR was 0%, 8.9%, and 8.9% in cases with CMV reactivation, compared with 18.5%, 21.5%, and 26.7% for those without CMV reactivation at 1 year, 2 years, and 3 years post-transplantation (**Figure 2**). After controlling for other variables in our multivariate analyses in the non-ATG group (**Table 2**), the occurrence of CMV reactivation was still listed as a favorable independent factor correlating with decreased relapse incidence (OR 0.28, 97.5% CI 0.10-

## Lower relapse rate of AML after CMV reactivation

**Table 2.** Multivariate analysis of cumulative incidence of relapse and OS

	CIR		OS	
	P value <sup>+</sup>	OR* (95% CI)	P value*	OR* (95% CI)
All patients				
Risk stratification				
Favorable		1.0 <sup>†</sup>		1.0 <sup>†</sup>
Intermediate	0.620	1.36 (0.40-4.62)	0.182	1.67 (0.79-3.53)
Adverse	0.091	2.85 (0.85-9.61)	0.025	2.41 (1.12-5.18)
Disease phase: ≥ CR2 or active vs CR1	< 0.001	4.32 (2.53-7.40)	< 0.001	4.00 (2.66-6.03)
WBC: ≥ 100000/MCL vs < 100000/MCL	0.940	0.97 (0.48-1.97)	0.710	0.90 (0.53-1.55)
Acute GVHD: Grade: 2-4 vs 0-1	0.950	1.02 (0.60-1.73)	0.002	1.86 (1.25-2.77)
Chronic GVHD: Present vs Absent	< 0.001	0.21 (0.12-0.39)	0.002	0.53 (0.35-0.79)
CMV: yes vs no	0.340	0.78 (0.46-1.31)	0.012	0.60 (0.40-0.89)
Patients in non-ATG group				
Risk stratification				
Favorable		1.0 <sup>†</sup>		1.0 <sup>†</sup>
Intermediate	0.420	2.43 (0.28-20.84)	0.121	2.36 (0.80-6.95)
Adverse	0.054	8.07 (0.97-67.47)	0.037	3.34 (1.07-10.37)
Disease phase: ≥ CR2 or active vs CR1	0.046	2.62 (1.02-6.78)	< 0.001	4.34 (2.08-9.05)
WBC: ≥ 100000/MCL vs < 100000/MCL	0.810	1.16 (0.34-3.99)	0.380	0.62 (0.22-1.80)
Acute GVHD: Grade: 2-4 vs 0-1	0.840	0.90 (0.32-2.53)	0.037	1.99 (1.04-3.81)
Chronic GVHD: Present vs Absent	0.008	0.27 (0.10-0.71)	0.325	0.72 (0.38-1.38)
CMV: yes vs no	0.016	0.28 (0.10-0.79)	0.005	0.37 (0.18-0.74)
Patients in ATG group				
Risk stratification				
Favorable		1.0 <sup>†</sup>		1.0 <sup>†</sup>
Intermediate	0.780	0.82 (0.20-3.39)	0.923	1.05 (0.36-3.05)
Adverse	0.740	1.28 (0.31-5.29)	0.428	1.54 (0.53-4.47)
Disease phase: ≥ CR2 or active vs CR1	< 0.001	5.26 (2.64-10.47)	< 0.001	3.53 (2.08-5.98)
WBC: ≥ 100000/MCL vs < 100000/MCL	0.690	0.82 (0.31-2.17)	0.836	1.07 (0.56-2.05)
Acute GVHD: Grade: 2-4 vs 0-1	0.970	1.01 (0.52-1.97)	0.033	1.76 (1.05-2.96)
Chronic GVHD: Present vs Absent	< 0.001	0.19 (0.08-0.41)	0.003	0.45 (0.26-0.76)
CMV: yes vs no	0.840	1.07 (0.55-2.07)	0.220	0.72 (0.42-1.22)

CIR: cumulative incidence of relapse; OS: overall survival, <sup>†</sup>Reference category. \*Multivariate Fine and Gray competing risk regression model. <sup>†</sup>Multivariate Cox proportional hazards model.

0.79;  $P = 0.016$ ). Applying the same analysis to all patients, disease phase ( $\geq$  CR2/active) ( $P = 0.046$ ) and cGVHD ( $P = 0.008$ ) were other two crucial prognostic factors predictive of disease relapse.

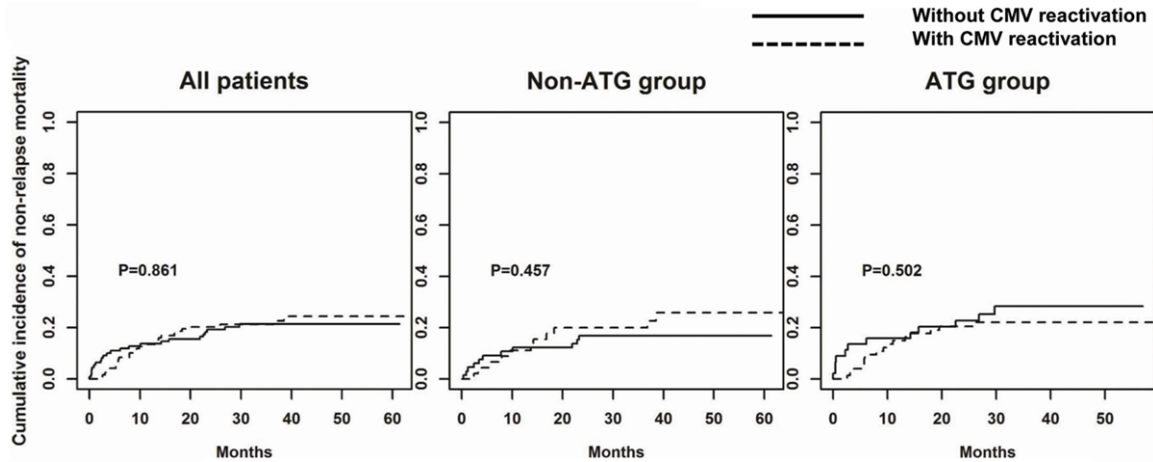
In the ATG group, 37 of 117 (31.6%) patients relapsed after a median time of 120 days (range 19-731) post-HSCT. Other than these findings in our non-ATG group, both the univariate and multivariate analyses showed that the effect of CMV reactivation on disease relapse was statistically meaningless in the ATG group. The CIR was 26.0%, 30.1%, and 30.1% in cases with CMV reactivation, compared with 25.0%, 31.8%, and 34.1% for those without CMV reac-

tivation at 1 year, 2 years, and 3 years after HSCT (**Figure 2**). Consistent with our analysis of the group containing all patients we found that within the non-ATG group, cGVHD ( $P < 0.001$ ) and disease phase ( $\geq$  CR2/active) ( $P < 0.001$ ) greatly influenced the cumulative incidence of relapse in multivariate analyses (**Table 2**).

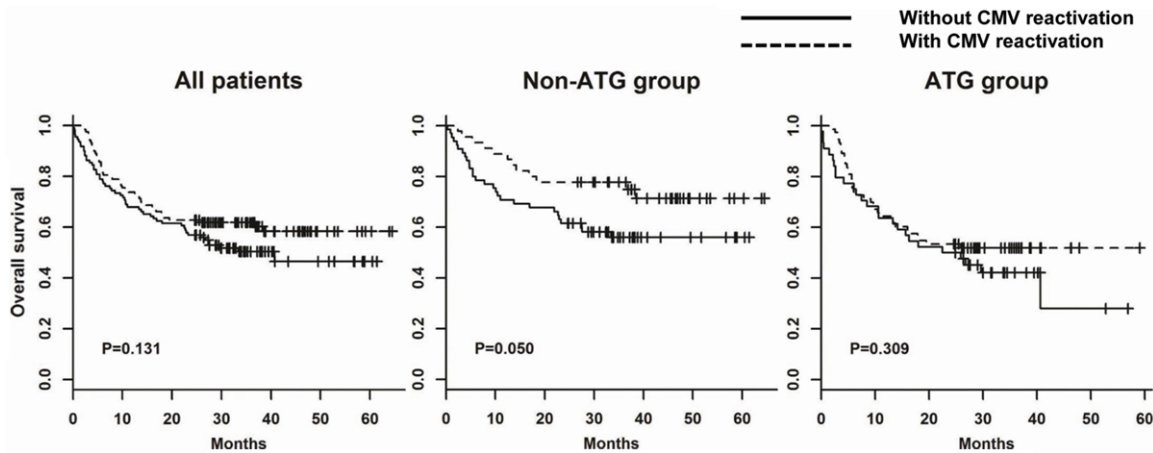
*CMV reactivation with a better OS but not affecting on non-relapse mortality in non-ATG group*

At the end of the follow-up period, 125 cases are still alive and 102 died [(51 died of disease progression and 51 due to non-relapse mortality (NRM)]. The estimate of OS rate in all

## Lower relapse rate of AML after CMV reactivation



**Figure 3.** Cumulative incidence of non-relapse mortality (NRM) classified by CMV reactivation in all patients, Non-ATG group, and ATG group. The Gray test was performed to examine the differences between patients with and without CMV reactivation.



**Figure 4.** Overall survival (OS) classified by CMV reactivation in all patients, Non-ATG group, and ATG group. A log-rank test was performed to examine the differences between patients with and without CMV reactivation.

patients was 70.9%, 59.9%, and 56.3% at 1 year, 2 years, and 3 years, respectively.

In NRM rate analysis with regard to CMV reactivation status, no statistical significance was observed in groups containing all patients, the non-ATG group, or the ATG group (**Figure 3**). However, a higher estimated OS rate with CMV replication was observed in the non-ATG group but not in all patients or the ATG group (**Figure 4**). Respectively, the estimated OS rate stratified by CMV reactivation was 77.8% and 56.0% at 3 years after transplantation in the non-ATG group ( $P = 0.050$ ). Multivariate analysis (**Table 2**) illuminated that CMV reactivation was still a good prognostic factor for better OS in the non-ATG group (OR 0.37, 95% CI 0.18-0.74;  $P = 0.005$ ). In the ATG group, by contrast, the analy-

sis of OS had no significant relationship with CMV reactivation. Both in the group containing all patients or subgroups thereof, OS was greatly worsened in patients who developed aGVHD grade  $\geq 2$ , and who underwent transplantation at an adverse phase of disease (CR  $\geq 2$  or active). In contrast with the non-ATG group, the presence of cGVHD rather than CMV reactivation was a good prognostic factor for better OS in the ATG group (OR 0.45, 95% CI 0.26-0.76;  $P = 0.003$ ).

### Discussion

In recent years, several studies have confirmed the antileukemic effect induced by CMV reactivation in AML patients after allo-HSCT [3-6, 18]. However, few systematic and control analy-

## Lower relapse rate of AML after CMV reactivation

sis was performed to evaluate the impact of ATG on this CMV-induced effect. Lately Busca A et al. showed that this CMV-induced profitable effect could be dampened by the use of ATG in vivo [7]. Even so, this moderate effect of ATG in that study seems to be ambiguous currently. Hence, our retrospective study sought to analyze whether the use of ATG regimens might abolish this antileukemic effect. Accordingly, a total of 227 patients with AML who had undergone HSCT were divided into two groups based on whether ATG was used as part of their MA conditioning regimen.

Our study demonstrated a trend towards a lower tendency of relapse incidence associated with CMV reactivation after transplantation in all patients; however, these differences did not achieve statistical significance. By contrast, subgroup analysis showed that CMV reactivation resulted in decreasing cumulative incidence of relapse and a better OS rate in the non-ATG regimen group but not in the ATG group. Similarly, relapse incidence was affected by both the presentation of cGVHD and disease phase at transplantation in all patients, the non-ATG group and the ATG group, while both aGVHD grade  $\geq 2$  and disease phase ( $\geq$  CR2/active) were two poor prognostic factors affecting the final outcome. In the assessment of NRM affected by CMV replication, all analyses in all patient groups showed no statistical significance. Aside from our findings regarding cumulative incidence of relapse and OS analysis in the non-ATG group, our other findings were consistent with those in previous studies.

On the basis of previous studies [19], CMV seropositivity and mismatched donors were the two foremost risk factors of CMV replication. Moreover, severe immunosuppression included ATG after transplantation resulted in more frequent CMV reactivation [20, 21]. In our data, ATG-group from haplo- or URD-HSCT had a higher incidence of CMV reactivation (73/110), compared with 45 of 110 patients among non-ATG group from sib-HSCT (62% versus 41%,  $P = 0.001$ ). Despite this higher incidence of CMV replication in ATG group, all patients from this group have not benefited from the CMV-induced GVL effect yet. Among the non-ATG group, the beneficial effects induced by CMV replication were more apparent, both in univariate and multivariate analyses. However, the mecha-

nism behind antileukemic effects induced by CMV infection after allo-HSCT is not clarified currently. Foley et al. reported that the NKG2C<sup>+</sup>CD57<sup>+</sup> NK cells expanded by CMV replication enhanced the antileukemic effect in vitro [10]. CMV replication after HSCT could raise the expression of leucocyte fixation antigen-3 on AML blasts, resulting in increased NK cell-mediated antileukemic effects [2, 9]. Furthermore, Knight A et al. [22] has demonstrated that V $\delta$ 2<sup>NEG</sup>  $\gamma$  $\delta$ T cells participate in the immune response to clear CMV, and these expanded  $\gamma$  $\delta$ T cells have displayed cytolytic activity against tumor cells in vitro [23]. Meanwhile,  $\gamma$  $\delta$ T cells induced by CMV replication that can cross-recognize residual leukemic blasts have been reported recently [11]. When the latent CMV in leukemic blasts becomes reactivated, T cells specific for CMV derived from the donor could also be cytotoxic to these leukemic blasts [2]. All these findings may make the CMV-induced antileukemic effect more persuasive. According to several studies about the effect of ATG on immune reconstruction [21, 24], ATG can greatly delay the reconstitution of CD4<sup>+</sup> T cells. Nevertheless, ATG seemed to have no obvious immunosuppressive effects on NK cells. And no explicit data could be used to evaluate the impact of ATG on the reconstitution of NK cells, especially the NKG2C<sup>+</sup>CD57<sup>+</sup> NK cells. In this context, we had great difficulty in demarcating the role of ATG in our study. In contrast to the previous study of Manjappa S et al., a few patients (2 out of 206) used ATG as part of the MA conditioning regimen, so it was not surprising that both all patients and cohorts underwent MA regimens in that study have significantly decreased relapse incidence associated with CMV reactivation [6].

Generally speaking in our study, patients not using ATG as a part of GVHD prophylaxis could definitely benefit from the enhanced GVL effect induced by CMV reactivation. CMV reactivation foreboded a lower cumulative incidence of relapse and a better OS in the non-ATG group, while no statistical significance was presented in the ATG group. Thus, the use of ATG in the MA conditioning regimen abrogates this beneficial effect. In addition, the disease phase pre-transplantation has been observed as the consistent significant determinant factor for the final outcome of the group containing all patients. In this study, 43 of 117 (37%) patients with pre-

## Lower relapse rate of AML after CMV reactivation

transplant ATG regimen underwent HSCT in an adverse disease phase ( $\geq$  CR2/active), compared with 18/110 (16%) of non-ATG group patients ( $P = 0.001$ ). Further studies are necessary to confirm whether this more adverse disease phase might obscure the CMV-induced beneficial anti-leukemic effects in ATG group patients.

### Acknowledgements

This work was supported by National Natural Science Foundation of China (No. 81370626; 81273266; 81100390), the Priority Academic Program Development of Jiangsu Higher Education Institutions (PAPD), National Clinical Key Specialty Development Project and National Public Health Grand Research Foundation (No. 201202017), the Network Hospital of Clinical Medicine Science and Technology Project, Jiangsu Science and Technology Department (No. BL2012005), Jiangsu "333" talent project (BRA2015497).

### Disclosure of conflict of interest

None.

**Address correspondence to:** Huiying Qiu and Xiaojin Wu, Jiangsu Institute of Hematology, The First Affiliated Hospital of Soochow University, No. 188. Shi Zi Street, Suzhou 215006, China; Collaborative Innovation Center of Hematology, Soochow University, Suzhou 215006, China; Suzhou Institute of Blood and Marrow Transplantation, Suzhou, 215006, China. Tel: 86-0512-67781856; Fax: 86-0512-67781850; E-mail: qiuhuiying@aliyun.com (HYQ), wuxiaojin@suda.edu.cn (XJW)

### References

- [1] Lönnqvist B, Ringdén O, Ljungman P, Wahren B, Gahrton G. Reduced risk of recurrent leukaemia in bone marrow transplant recipients after cytomegalovirus infection. *Br J Haematol* 1986; 63: 671-679.
- [2] Barrett AJ. CMV: when bad viruses turn good. *Blood* 2011; 118: 1193-1194.
- [3] Elmaagacli AH, Steckel NK, Koldehoff M, Hegerfeldt Y, Trensche R, Ditschkowski M, Elmaagacli AH, Steckel NK, Koldehoff M, Hegerfeldt Y, Trensche R, Ditschkowski M, Christoph S, Gromke T, Kordelas L, Ottinger HD, Ross RS, Horn PA, Schnittger S, Beelen DW. Early human cytomegalovirus replication after transplantation is associated with a decreased relapse risk: evidence for a putative virus-versus-leukemia effect in acute myeloid leukemia patients. *Blood* 2011; 118: 1402-1412.
- [4] Ito S, Pophali P, Co W, Koklanaris EK, Superata J, Fahle GA, Childs R, Battiwalla M, Barrett AJ. CMV reactivation is associated with a lower incidence of relapse after allo-SCT for CML. *Bone Marrow Transplant* 2013; 48: 1-4.
- [5] Green ML, Leisenring WM, Xie H, Walter RB, Mielcarek M, Sandmaier BM, Riddell SR, Boeckh M. CMV reactivation after allogeneic HCT and relapse risk: evidence for early protection in acute myeloid leukemia. *Blood* 2013; 122: 1316-1324.
- [6] Manjappa S, Bhamidipati PK, Stokerl-Goldstein KE, DiPersio JF, Uy GL, Westervelt P, Liu J, Schroeder MA, Vij R, Abboud CN, Fehniger TA, Cashen AF, Pusic I, Jacoby M, Meera SJ, Romee R. Protective effect of cytomegalovirus reactivation on relapse after allogeneic hematopoietic cell transplantation in acute myeloid leukemia patients is influenced by conditioning regimen. *Biol Blood Marrow Transplant* 2014; 20: 46-52.
- [7] Busca A, Passera R, Pini M, Zallio F, Dellacasa C, Audisio E, Giaccone L, Maffini E, Costa C, Cavallo R, Bruno B. The use of ATG abrogates the antileukemic effect of cytomegalovirus reactivation in patients with acute myeloid leukemia receiving grafts from unrelated donors. *Am J Hematol* 2015; 90: E117-21.
- [8] Thomson KJ, Mackinnon S, Peggs KS. CMV-specific cellular therapy for acute myeloid leukemia? *Blood* 2012; 119: 1088-1090.
- [9] Fletcher JM, Prentice HG, Grundy JE. Natural killer cell lysis of cytomegalovirus (CMV)-infected cells correlates with virally induced changes in cell surface lymphocyte function-associated antigen-3 (LFA-3) expression and not with the CMV-induced down-regulation of cell surface class I HLA. *J Immunol* 1998; 161: 2365-2374.
- [10] Foley B, Cooley S, Verneris MR, Pitt M, Curt-singer J, Luo X, Lopez-Verges S, Lanier LL, Weisdorf D, Miller JS. Cytomegalovirus reactivation after allogeneic transplantation promotes a lasting increase in educated NKG2C+ natural killer cells with potent function. *Blood* 2012; 119: 2665-2674.
- [11] Scheper W, van Dorp S, Kersting S, Pietersma F, Lindemans C, Hol S, Heijhuurs S, Sebestyen Z, Gründer C, Marcu-Malina V, Marchant A, Donner C, Plachter B, Vermijlen D, van Baarle D, Kuball J.  $\gamma\delta$ T cells elicited by CMV reactivation after allo-SCT cross-recognize CMV and leukemia. *Leukemia* 2013; 27: 1328-1338.
- [12] O'Donnell MR, Abboud CN, Altman J, Appelbaum FR, Arber DA, Attar E, Borate U, Coutre SE, Damon LE, Goorha S, Lancet J, Maness LJ,



## Lower relapse rate of AML after CMV reactivation

- Marcucci G, Millenson MM, Moore JO, Ravandi F, Shami PJ, Smith BD, Stone RM, Strickland SA, Tallman MS, Wang ES, Naganuma M, Gregory KM. Acute myeloid leukemia. *J Natl Compr Canc Netw* 2012; 10: 984-1021.
- [13] Przepiorka D, Weisdorf D, Martin P, Klingemann HG, Beatty P, Hows J, Thomas ED. 1994 consensus conference on acute gvhd grading. *Bone Marrow Transplant* 1995; 15: 825.
- [14] Jagasia MH, Greinix HT, Arora M, Williams KM, Wolff D, Cowen EW, Palmer J, Weisdorf D, Treister NS, Cheng GS, Kerr H, Stratton P, Duarte RF, McDonald GB, Inamoto Y, Vigorito A, Arai S, Datile MB, Jacobsohn D, Heller T, Kitko CL, Mitchell SA, Martin PJ, Shulman H, Wu RS, Cutler CS, Vogelsang GB, Lee SJ, Pavletic SZ, Flowers ME. National institutes of health consensus development project on criteria for clinical trials in chronic graft-versus-host disease. I. The 2014 Diagnosis and Staging Working Group Report. *Biol Blood Marrow Transplant* 2015; 21: 389-401.
- [15] Cheson BD, Bennett JM, Kopecky KJ, Büchner T, Willman CL, Estey EH, Schiffer CA, Doehner H, Tallman MS, Lister TA, Lo-Coco F, Willemze R, Biondi A, Hiddemann W, Larson RA, Löwenberg B, Sanz MA, Head DR, Ohno R, Bloomfield CD; International Working Group for Diagnosis, Standardization of Response Criteria, Treatment Outcomes, and Reporting Standards for Therapeutic Trials in Acute Myeloid Leukemia. Revised recommendations of the International Working Group for diagnosis, standardization of response criteria, treatment outcomes, and reporting standards for therapeutic trials in acute myeloid leukemia. *J Clin Oncol* 2003; 21: 4642-4649.
- [16] Gray RJ. A class of K-sample tests for comparing the cumulative incidence of a competing risk. *Ann Stat* 1988; 16:1141-1154.
- [17] Fine JP, Gray RJ. A proportional hazards model for the sub-distribution of a competing risk. *J Am Statist Assoc* 1999; 94: 496-509.
- [18] Jang JE, Kim SJ, Cheong JW, Hyun SY, Kim YD, Kim YR, Kim JS, Min YH. Early CMV replication and subsequent chronic GVHD have a significant anti-leukemic effect after allogeneic HSCT in acute myeloid leukemia. *Ann Hematol* 2015; 94: 275-282.
- [19] Boeckh M, Ljungman P. How we treat cytomegalovirus in hematopoietic cell transplant recipients. *Blood* 2009; 113: 5711-5719.
- [20] Chevallier P, Hebia-Fellah I, Planche L, Guillaume T, Bressolette-Bodin C, Coste-Burel M, Rialland F, Mohty M, Imbert-Marcille BM. Human herpes virus 6 infection is a hallmark of cord blood transplant in adults and may participate to delayed engraftment: a comparison with matched unrelated donors as stem cell source. *Bone Marrow Transplant* 2010; 45: 1204-1211.
- [21] Schmidt-Hieber M, Schwarck S, Stroux A, Ganepola S, Reinke P, Thiel E, Uharek L, Blau IW. Immune reconstitution and cytomegalovirus infection after allogeneic stem cell transplantation: The important impact of in vivo T cell depletion. *Int J Hematol* 2010; 91: 877-885.
- [22] Knight A, Madrigal AJ, Grace S, Sivakumaran J, Kottaridis P, Mackinnon S, Travers PJ, Lowdell MW. The role of Vdelta2-negative gammadelta T cells during cytomegalovirus reactivation in recipients of allogeneic stem cell transplantation. *Blood* 2010; 116: 2164-2172.
- [23] Scotet E, Martinez LO, Grant E, Barbaras R, Jenö P, Guiraud M, Monsarrat B, Saulquin X, Maillet S, Estève JP, Lopez F, Perret B, Collet X, Bonneville M, Champagne E. Tumor recognition following Vgamma9Vdelta2 T cell receptor interactions with a surface F1-ATPase-related structure and apolipoprotein A-I. *Immunity* 2005; 22: 71-80.
- [24] Servais S, Menten-Dedoyart C, Beguin Y, Seidel L, Gothot A, Daulne C, Willems E, Delens L, Humblet-Baron S, Hannon M, Baron F. Impact of Pre-Transplant Anti-T Cell Globulin (ATG) on Immune Recovery after Myeloablative Allogeneic Peripheral Blood Stem Cell Transplantation. *PLoS One* 2015; 10: e0130026.