

# Nottingham Prognostic Index Plus: Validation of a clinical decision making tool in breast cancer in an independent series

Andrew R Green,<sup>1</sup> Daniele Soria,<sup>2,3</sup> Jacqueline Stephen,<sup>4</sup> Desmond G Powe,<sup>5</sup> Christopher C Nolan,<sup>1</sup> Ian Kunkler,<sup>6</sup> Jeremy Thomas,<sup>7</sup> Gillian R Kerr,<sup>6</sup> Wilma Jack,<sup>7</sup> David Cameron,<sup>6</sup> Tammy Piper,<sup>7</sup> Graham R Ball,<sup>8</sup> Jonathan M Garibaldi,<sup>2,3</sup> Emad A Rakha,<sup>1,5</sup> John MS Bartlett<sup>6,9</sup> and Ian O Ellis<sup>1,5\*</sup>

<sup>1</sup> Division of Cancer and Stem Cells, Breast Cancer Pathology Research Group, School of Medicine, University of Nottingham, Nottingham City Hospital, Hucknall Road, Nottingham NG5 1PB

<sup>2</sup> Intelligent Modelling & Analysis Research Group, School of Computer Science, University of Nottingham, Jubilee Campus, Wollaton Road, Nottingham NG8 1BB

<sup>3</sup> Advanced Data Analysis Centre, University of Nottingham, University Park, Nottingham NG7 2RD

<sup>4</sup> School of Molecular, Genetic and Population Health Sciences, Centre for Population Health Sciences, Medical School, University of Edinburgh, Teviot Place, Edinburgh EH8 9AG

<sup>5</sup> Cellular Pathology, Nottingham University Hospitals NHS Trust, Hucknall Road, Nottingham NG5 1PB

<sup>6</sup> The Institute of Genetics and Molecular Medicine, Edinburgh Cancer Research Centre, University of Edinburgh, Western General Hospital, Crewe Road South, Edinburgh EH4 2XR

<sup>7</sup> Edinburgh Breast Unit, Western General Hospital, Crewe Road South, Edinburgh EH4 2XU

<sup>8</sup> John van Geest Cancer Research Centre, School of Science and Technology, Nottingham Trent University, Nottingham NG11 8NS

<sup>9</sup> Transformative Pathology, Ontario Institute for Cancer Research, MaRS Centre, 661 University Avenue, Suite 510, Toronto, Canada M5G 0A3

\*Correspondence to: Ian O Ellis, Department of Histopathology, Nottingham City Hospital, University of Nottingham and Nottingham University Hospital NHS Trust, Hucknall Road, Nottingham NG5 1PB, UK. e-mail: ian.ellis@nottingham.ac.uk

## Abstract

The Nottingham Prognostic Index Plus (NPI+) is a clinical decision making tool in breast cancer (BC) that aims to provide improved patient outcome stratification superior to the traditional NPI. This study aimed to validate the NPI+ in an independent series of BC. Eight hundred and eighty five primary early stage BC cases from Edinburgh were semi-quantitatively assessed for 10 biomarkers [Estrogen Receptor (ER), Progesterone Receptor (PgR), cytokeratin (CK) 5/6, CK7/8, epidermal growth factor receptor (EGFR), HER2, HER3, HER4, p53, and Mucin 1] using immunohistochemistry and classified into biological classes by fuzzy logic-derived algorithms previously developed in the Nottingham series. Subsequently, NPI+ Prognostic Groups (PGs) were assigned for each class using bespoke NPI-like formulae, previously developed in each NPI+ biological class of the Nottingham series, utilising clinicopathological parameters: number of positive nodes, pathological tumour size, stage, tubule formation, nuclear pleomorphism and mitotic counts. Biological classes and PGs were compared between the Edinburgh and Nottingham series using Cramer's V and their role in patient outcome prediction using Kaplan–Meier curves and tested using Log Rank. The NPI+ biomarker panel classified the Edinburgh series into seven biological classes similar to the Nottingham series ( $p > 0.01$ ). The biological classes were significantly associated with patient outcome ( $p < 0.001$ ). PGs were comparable in predicting patient outcome between series in Luminal A, Basal p53 altered, HER2+/ER+ tumours ( $p > 0.01$ ). The good PGs were similarly validated in Luminal B, Basal p53 normal, HER2+/ER– tumours and the poor PG in the Luminal N class ( $p > 0.01$ ). Due to small patient numbers assigned to the remaining PGs, Luminal N, Luminal B, Basal p53 normal and HER2+/ER– classes could not be validated. This study demonstrates the reproducibility of NPI+ and confirmed its prognostic value in an independent cohort of primary BC. Further validation in large randomised controlled trial material is warranted.

**Keywords:** breast cancer; classification; prognostic index; molecular; clinical; outcome

Received 10 July 2015; accepted 22 October 2015

†Conflicts of Interest: The authors have no conflicts of interests to declare.

## Introduction

Breast cancer (BC), is one of the leading causes of death in women but it represents a very heterogeneous group of tumours in terms of genotype, phenotype, behaviour and response to treatment. With the number of available treatment options, making the most appropriate treatment choice is increasingly difficult and complex and, therefore, a more personalised management of BC is required. However, clinical decision making in personalised BC treatment requires robust and accurate risk stratification based on outcome prediction and biology [1].

Personalised treatment plans for BC require integration of clinical, histopathological and biological information to effectively stratify patients with regard to their expected outcome and response to the various applicable treatment options. There has been increasing interest in use of multigene assays, such as Onco-type DX<sup>®</sup> [2] and MammaPrint<sup>®</sup> [3], and their potential clinical utility in BC management. However, the incorporation of molecular taxonomy of BC using gene expression profiling into routine clinical decision-making has not proved entirely successful due to factors including reproducibility, validation, cost and lack of utility for all BC patients.

The current Nottingham Prognostic Index (NPI) [4–6] is based on a combination of histopathological factors (tumour size, lymph node stage and tumour grading) integrated in a prognostic index formula [7] which can be used to stratify BC patients with operable early stage primary BC into prognostic groups. The utility of the NPI has been confirmed after long-term follow-up [4], validated independently in large multi-centre studies [5,8,9], revised to stratify patients into additional prognostic groups [10], and is currently adopted in clinical practice in the UK and other parts of Europe and Australia. However, the NPI does not reflect the biological heterogeneity of BC and assigns equal weighting of the prognostic factors histological grade, tumour lymph node stage and tumour size to all cancers. It, therefore, requires further enhancement to support more accurate personalised management of BC patients.

It is now recognised that the biological characteristics of BC are important for clinical management and addition of biological markers to the NPI can significantly improve risk stratification of BC patients [11]. We have, therefore, developed the Nottingham Prognostic Index Plus (NPI+) [11] which conceptually evolved to modernise the historical NPI by applying the prognostic methods used in the NPI, which are based on well-established powerful clinicopathologi-

cal variables, following BC molecular class assignment. NPI+ is thus based on a two tier evaluation; the initial assessment determines the biological class of the tumour (detailed below) and is subsequently followed by classification using traditional clinicopathological prognostic variables using a tailored (bespoke) NPI-like prognostic formulae for each biological class [11–14]. NPI+ uses routine clinical samples and commonplace laboratory methods and could integrate easily into current international clinical practice. It has potential clinical utility by providing improved patient outcome stratification and by providing a decision making tool which can identify patients likely to have a good outcome following conventional BC treatment and a subgroup(s) of patients at risk of adverse outcome, that is, who are at increased risk of treatment failure and who could potentially benefit from additional/alternative therapy, should these currently be available or become available in the future [11]. Seven core BC NPI+ Biological Classes are initially determined by the evaluation of 10 BC-related biomarkers using immunohistochemistry and a fuzzy rule induction algorithm [15] to classify the breast tumours. The molecular classes identified based on the combination of these 10 biomarkers using fuzzy logic are similar in biomarker profile to those intrinsic classes identified using gene expression profiling and include three luminal classes (Luminal A, N and B), two basal classes (Basal – p53 altered and Basal – p53 normal) and two HER2+ classes (HER2+/ER+ and HER2+/ER–) [15]. These distinct biological classes of BC showed significant association with patient outcome [12–14]. Each NPI+ Biological Class is subsequently stratified using a set of well-defined prognostic clinicopathological variables which are combined in bespoke formulae to stratify each individual NPI+ Biological Class into two or more prognostic subgroups (NPI+ Prognostic Groups) which have been shown to be superior to the classic NPI [11].

In this study, we aimed to validate the NPI+ in a large independent series of clinically annotated early stage BCs from a single centre (Edinburgh, UK) to assess the potential of NPI+ as a prognostic tool in BC.

## Materials and methods

### Nottingham series

A series of 1073 patients from the Nottingham-Tenovus Primary Breast Carcinoma Series, aged 70 years or less, presenting with primary operable (stages I, II and IIIa) invasive BC between 1986 and 1998 were previously used to develop the NPI+

Table 1. Pathological characteristics of the Nottingham and Edinburgh series

|  | Nottingham (n = 1073) n (%)        | Edinburgh (n = 885) n (%)          | p-value |
|--|------------------------------------|------------------------------------|---------|
| <b>Grade</b>                               |                                    |                                    |         |
| 1  | 158 (14.7)                         | 194 (22.0)                         | <0.001  |
| 2  | 348 (32.4)                         | 359 (40.8)                         |         |
| 3  | 567 (52.8)                         | 327 (37.2)                         |         |
| <b>Tubule formation</b>                    |                                    |                                    |         |
| 1  | 53 (5.0)                           | 73 (8.3)                           | 0.002   |
| 2  | 346 (33.0)                         | 222 (25.3)                         |         |
| 3  | 651 (62.0)                         | 582 (66.4)                         |         |
| <b>Pleomorphism</b>                        |                                    |                                    |         |
| 1  | 19 (1.8)                           | 3 (0.3)                            | 0.121   |
| 2  | 378 (36.1)                         | 346 (39.5)                         |         |
| 3  | 651 (62.1)                         | 528 (60.2)                         |         |
| <b>Mitosis</b>                             |                                    |                                    |         |
| 1  | 349 (33.2)                         | 523 (59.6)                         | <0.001  |
| 2  | 190 (18.1)                         | 138 (15.7)                         |         |
| 3  | 511 (47.6)                         | 216 (24.6)                         |         |
| <b>Size</b>                                |                                    |                                    |         |
|  | 0.13–10 cm (median 2.0 cm)         | 0.4–7.0 cm (median 1.7 cm)         |         |
| <1.5 cm                                    | 240 (22.4)                         | 285 (33.6)                         | <0.001  |
| ≥1.5 cm                                    | 833 (77.6)                         | 564 (66.4)                         |         |
| <b>Stage</b>                               |                                    |                                    |         |
| 1  | 654 (61.0)                         | 614 (69.4)                         | 0.014   |
| 2  | 330 (30.8)                         | 211 (23.8)                         |         |
| 3  | 88 (8.2)                           | 60 (6.8)                           |         |
| <b>Nottingham prognostic index</b>         |                                    |                                    |         |
| Excellent                                  | 110 (10.3)                         | 137 (15.5)                         | <0.001  |
| Good                                       | 200 (18.6)                         | 251 (28.4)                         |         |
| Moderate 1                                 | 293 (27.3)                         | 248 (28.0)                         |         |
| Moderate 2                                 | 277 (25.8)                         | 178 (20.1)                         |         |
| Poor                                       | 140 (13.0)                         | 53 (6.0)                           |         |
| Very poor                                  | 45 (4.2)                           | 17 (1.9)                           |         |
| <b>Treatment</b>                           |                                    |                                    |         |
| None                                       | 410 (40.3)                         | 95 (10.7)                          | <0.001  |
| Chemotherapy                               | 192 (18.9)                         | 118 (13.3)                         |         |
| Endocrine therapy                          | 396 (38.9)                         | 581 (65.6)                         |         |
| Chemotherapy/endocrine therapy             | 19 (1.9)                           | 91 (10.3)                          |         |
| <b>Survival</b>                            |                                    |                                    |         |
|  | 0.4–25.7 years (median 14.3 years) | 0.2–25.5 years (median 11.4 years) |         |
| Alive                                      | 582 (54.2)                         | 584 (66.0)                         | <0.001  |
| BC-specific deaths                         | 328 (30.1)                         | 179 (20.2)                         |         |
| Non-BC-related deaths or lost to follow-up | 163 (15.2)                         | 122 (13.8)                         |         |

[11–14]. This is a well-characterised consecutive series of patients who were uniformly treated according to locally agreed clinical protocols [12,16]. All tumours were less than 5-cm diameter on clinical/pre-operative measurement and/or on operative histology (T1 and T2). Women aged over 70 years were not included because of the increased confounding factor of death from other causes and because primary treatment protocols for these patients often differed from those for younger women. Adjuvant systemic therapies were offered according to the NPI [2] and hormone receptor (HR) status [2,10]. Patients in the Moderate I group (NPI 3.41–4.4) with HR-positive tumours were offered hormonal therapy. Patients in the Moderate II (NPI 4.41–5.4) and Poor (NPI ≥ 5.41) groups received hormone therapy for

HR-positive tumours and cytotoxic therapy [classical cyclophosphamide, methotrexate and 5-fluorouracil (CMF)] for HR-negative tumours if the patient was fit enough to tolerate chemotherapy. Hormonal therapy was given to 396 patients (40.3%) and chemotherapy to 192 (18.9%). A total of 19 patients (1.9%) in the Moderate II or Poor prognostic groups received a combination of chemotherapy and endocrine therapy (Table 1). Data relating to survival were collated in a prospective manner for those patients presenting after 1989 only.

#### Edinburgh series

The Edinburgh series comprised a cohort of 885 patients treated by breast conservation surgery,

axillary node sampling or clearance and whole breast radiotherapy between 1981 and 1998 in Edinburgh (Edinburgh Breast Conservation Series) [17]. Patients were those considered suitable for breast-conserving therapy and were T1 or T2, N0 or N1 and M0 for conventional tumour node metastasis staging. Patients with larger primary tumours and those with multifocal cancers on preoperative assessment were not considered eligible for inclusion. Standard surgical treatment was wide local excision. Patients with tumours measuring >2 cm in diameter and/or clinically N1 received a Level III axillary clearance. For tumours measuring clinically  $\leq 2$  cm, a lower axillary node sample (minimum four nodes) was undertaken. Post-operative breast radiotherapy was given at a dose of 45 Gy in 20 daily fractions in patients with one or more pathologically involved node on an axillary node sample; the peripheral lymphatics were also irradiated over 4 weeks. Patients received adjuvant systemic therapy as follows: endocrine therapy (primarily using tamoxifen), chemotherapy alone (primarily using CMF), chemotherapy plus endocrine therapy or no adjuvant systemic therapy (primarily those with grade 1 tumours).

Breast cancer-specific survival (BCSS) is defined as the interval between the operation and death from BC, death being scored as an event, and patients who died from other causes or were still alive were censored at the time of last follow-up.

This study was approved by the Nottingham Research Ethics Committee 2 under the title 'Development of a molecular genetic classification of breast cancer'.

#### Determination of NPI+ biological class

Immunohistochemical reactivity for the NPI+ biomarkers in the Nottingham series was previously determined using standard immunohistochemical techniques on tumour samples prepared as tissue microarrays (TMAs) [12]. TMAs for both cohorts were prepared using 0.6-mm cores. For the Nottingham series, one TMA core from the centre and one from the periphery of the most representative areas of tumour were included [12]. For the Edinburgh series, one TMA core per patient from representative tumour areas was used [18]. The NPI+ was developed using the following biomarkers: Estrogen Receptor (ER), Progesterone Receptor (PgR), cytokeratin (CK) 5/6, CK7/8 (using the anti-cytokeratin CAM5.2 clone), epidermal growth factor receptor (EGFR; HER1), c-erbB2 (HER2), c-erbB3 (HER3), c-erbB4 (HER4), p53 and Mucin 1 [14]. TMAs of the Edinburgh series were also stained for these same

biomarkers in Nottingham using the same procedures as previously described (Supporting Information Table 1) [12,14]. A series of BC, prepared as TMAs, with differing levels of expression of the 10 biomarkers (ranging from negative to strongly positive) were included as positive and negative controls and to standardise immunoreactivity. Levels of immunohistochemical reactivity were determined by microscopic analysis using the modified Histochemical score (H-score), giving a semi-quantitative assessment of both the intensity of staining (0–3) and the percentage of positive cells (0–100) (multiplied to give values between 0 and 300) [19,20]. Immunohistochemical staining and subsequent scoring, conducted by at least two independent scorers, was performed in the Nottingham laboratory. For HER2, the American Society of Clinical Oncology/College of American Pathologists Guidelines Recommendations for HER2 Testing in BC were used for assessment [21]. In the Nottingham series, equivocal (2+) HER2+ cases were confirmed by chromogenic *in situ* hybridisation as previously described [22]. The Reporting Recommendations for Tumour Marker Prognostic Studies (REMARK) criteria, recommended by [23], were followed. In the Edinburgh series, equivocal cases ( $n = 67$ ) were excluded from analysis.

For biological classification, a fuzzy logic rule-based method algorithm was used where the cut-offs for each biomarker were previously determined [15]. In particular, the median value of markers was used for ER, PgR, CK7/8, HER3, HER4 and MUC1. The expertise values were used for those markers that had a median equal to zero and for those where clinicians were sure about the value to consider (CK5/6, EGFR, p53 and HER2). Pathological characteristics of the 885 cases, along with the Nottingham cases, are summarised in Table 1. Hormonal therapy was given to 581 patients (65.6%), chemotherapy to 118 (13.3%) and 91 patients (10.3%) received a combination of chemotherapy and endocrine therapy (Table 1).

#### Determination of NPI+ prognostic groups

The NPI+ Prognostic Groups were then calculated using bespoke NPI-like formulae, previously developed in each NPI+ Biological Class of the Nottingham series, utilising the existing available clinicopathological parameters (Table 2) [11]. Briefly, these were established by utilisation of the Beta values generated by Cox regression analysis in predicting BCSS of the well-established histopathologic prognostic factors. These formulae were initially derived from the Biological Classes in Green

Table 2. NPI+ formulae for the biological classes

| Class             | NPI+ formula   |
|-------------------|--|
| Luminal A         | $(0.8 \times \text{Mitosis}) + (0.5 \times \text{Size}) + (1.8 \times \text{Nodal ratio}^*)$ |
| Luminal N         | $(0.8 \times \text{Tubules}) + (0.6 \times \text{Stage})$                                    |
| Luminal B         | $(0.7 \times \text{Mitosis}) + (1.0 \times \text{Nodal ratio})$                              |
| Basal p53 altered | $(1.4 \times \text{Nodal ratio}) + (0.4 \times \text{Size})$                                 |
| Basal p53 normal  | $(0.6 \times \text{Stage}) + (1.8 \times \text{Pleomorphism})$                               |
| HER2+/ER+         | $(0.5 \times \text{Size}) + (0.9 \times \text{Stage})$                                       |
| HER2+/ER-         | $(0.9 \times \text{Stage}) - (0.6 \times \text{Nodal ratio})$                                |

\*Number of nodes positive/Total number of nodes.

*et al* 2013 [14] and were subsequently refined using the improved biological classification used in Soria *et al* 2013 [15] consisting of: number of positive nodes, nodal ratio, pathological tumour size, stage, tubule formation, nuclear pleomorphism and mitotic counts. These were identified as the most significant variables in the Nottingham series impacting on survival, according to their Beta value in Cox regression indicating the magnitude of the influence of the hazard. The Nottingham series was split into the NPI+ Biological Classes and Cox regression analyses were performed independently for each class to identify the most significant clinicopathological prognostic factors and their beta value in the context of the individual classes. NPI+ Prognostic Groups for the Edinburgh series were assigned using the categorical cutpoints previously derived from the Nottingham series in each of the NPI+ Biological Classes [11]. For this purpose, the original pathology assessments on full-face sections for the histopathological parameters were utilised.

### Statistical analysis

The association between NPI+ Biological Classes and both histopathological and clinical characteristics was assessed using Cramer's V [24]. BCSS between NPI+ Biological classes and NPI+ Prognostic Groups was determined using Kaplan–Meier curves and tested using Log Rank. A  $p < 0.01$  was considered significant with Bonferroni adjustment for multiple testing.

## Results

### Clinicopathological parameters of the Edinburgh series

There were significant differences in the distribution of grade and size (both  $p < 0.001$ ) of the breast tumours between the Nottingham and Edinburgh series with a larger proportion of the Nottingham series being of larger tumour size, and of higher

Table 3. Distribution of NPI+ biological classes within the Nottingham and Edinburgh series

| NPI+ Class        | Nottingham<br>( <i>n</i> = 1073)<br><i>n</i> (%) | Edinburgh<br>( <i>n</i> = 885)<br><i>n</i> (%) | <i>p</i> -value |
|-------------------|--|--|-----------------|
| Luminal A         | 288 (26.8)                                       | 225 (29.3)                                     | $p = 0.629$     |
| Luminal N         | 205 (19.1)                                       | 152 (19.8)                                     |                 |
| Luminal B         | 186 (17.3)                                       | 140 (18.3)                                     |                 |
| Basal p53 altered | 113 (10.5)                                       | 93 (12.1)                                      |                 |
| Basal p53 normal  | 96 (8.9)   | 70 (9.1)                                       |                 |
| HER2+/ER+         | 62 (5.8)   | 32 (3.6)                                       |                 |
| HER2+/ER-         | 85 (7.9)   | 55 (6.2)                                       |                 |
| Unclassified      | 38 (3.5)   | 51 (5.8)                                       |                 |

grade and stage (Table 1). The median follow-up for the Nottingham series was 14.3 years and the Edinburgh series was 11.4 years. A total of 328 (36.0%) and 179 (20.2%) patients died due to their disease in the Nottingham and Edinburgh series, respectively. The Edinburgh series had better BCSS (82.1%) over the first 10-year period compared with the Nottingham series (74.7%).

### NPI+ biological class

NPI+ Biological Class was determined in the Edinburgh series using the immunohistochemical data for the 10 NPI+ Biomarkers: this showed that there was a similar distribution between each of the seven NPI+ Biological Classes (Luminal A, Luminal N, Luminal B, Basal p53 altered, Basal p53 normal, HER2+/ER+ and HER2+/ER-) compared with the Nottingham series ( $p = 0.629$ , Table 3). A total of 51 cases (5.8%) were not assigned to any class compared with 3.5% in the Nottingham series. There were significant associations between the clinicopathological parameters of the Edinburgh series and the NPI+ Biological Classes which are summarised in Table 4. The NPI+ Biological Classes were significantly associated with patient survival where the Luminal and Basal classes had a better BCSS than the HER2+ classes (Figure 1).

### NPI+ prognostic groups

There were a similar number of NPI+ Prognostic Groups evident in each of the biological classes in the Edinburgh series compared with the Nottingham series, however, there was a significant difference in the distribution of the NPI+ Prognostic Groups between the Nottingham and Edinburgh series (Table 5,  $p < 0.001$ ) [11]. Some of the poor NPI+ Prognostic Groups were under-represented in the Edinburgh series due to the relatively lower frequency of highly proliferative tumours in the series (Table 1) which may also explain the better survival of this series.

Table 4. Clinicopathological parameters of the NPI+ BC biological classes in the Edinburgh series

|                              | Luminal A<br>(n = 219)<br>n (%) | Luminal N<br>(n = 144)<br>n (%) | Luminal B<br>(n = 137)<br>n (%) | Basal - p53<br>altered (n = 90)<br>n (%) | Basal - p53<br>normal<br>(n = 64) n (%) | HER2+/ER+<br>(n = 32)<br>n (%) | HER2+/ER-<br>(n = 55)<br>n (%) | Cramer's V<br>(p-value) |
|------------------------------|---------------------------------|---------------------------------|---------------------------------|--|---|--------------------------------|--------------------------------|-------------------------|
| <b>Size</b>                  |                                 |                                 |                                 |  |   |                                |                                |                         |
| <15 mm                       | 89 (40.6)                       | 67 (46.5)                       | 50 (36.5)                       | 12 (13.3)                                | 18 (28.1)                               | 7 (23.3)                       | 11 (21.2)                      | 0.169 (<0.001)          |
| ≥15 mm                       | 130 (59.4)                      | 77 (53.5)                       | 87 (63.5)                       | 78 (86.7)                                | 46 (71.9)                               | 23 (76.7)                      | 41 (78.8)                      |                         |
| <b>Grade</b>                 |                                 |                                 |                                 |  |   |                                |                                |                         |
| 1                            | 75 (33.6)                       | 47 (30.9)                       | 35 (25.0)                       | 1 (1.1)                                  | 3 (4.4)                                 | 3 (9.7)                        | 1 (1.8)                        | 0.381 (<0.001)          |
| 2                            | 108 (48.4)                      | 73 (48.0)                       | 72 (51.4)                       | 10 (10.8)                                | 23 (33.8)                               | 8 (25.8)                       | 23 (41.8)                      |                         |
| 3                            | 40 (17.9)                       | 32 (21.1)                       | 33 (23.6)                       | 82 (88.2)                                | 42 (61.8)                               | 20 (64.5)                      | 31 (56.4)                      |                         |
| <b>Lymph node stage</b>      |                                 |                                 |                                 |  |   |                                |                                |                         |
| 1                            | 172 (76.4)                      | 108 (71.1)                      | 100 (71.4)                      | 68 (73.1)                                | 50 (71.4)                               | 15 (46.9)                      | 31 (56.4)                      | 0.169 (<0.001)          |
| 2                            | 44 (19.6)                       | 40 (26.3)                       | 36 (25.7)                       | 18 (19.4)                                | 18 (25.7)                               | 10 (31.2)                      | 15 (27.3)                      |                         |
| 3                            | 9 (4.0)                         | 4 (2.6)                         | 4 (2.9)                         | 7 (7.5)                                  | 2 (2.9)                                 | 7 (21.9)                       | 9 (16.4)                       |                         |
| <b>NPI</b>                   |                                 |                                 |                                 |  |   |                                |                                |                         |
| Excellent                    | 55 (24.8)                       | 33 (21.9)                       | 23 (16.4)                       | 0  | 1 (1.5)                                 | 2 (6.2)                        | 0                              | 0.221 (<0.001)          |
| Good                         | 82 (36.9)                       | 54 (35.8)                       | 53 (37.9)                       | 5 (5.4)                                  | 15 (22.1)                               | 5 (15.6)                       | 11 (20.0)                      |                         |
| Moderate 1                   | 52 (23.4)                       | 34 (22.5)                       | 37 (26.4)                       | 39 (41.9)                                | 29 (42.6)                               | 7 (21.9)                       | 17 (30.9)                      |                         |
| Moderate 2                   | 22 (9.9)                        | 26 (17.2)                       | 21 (15.0)                       | 37 (39.8)                                | 19 (27.9)                               | 10 (31.2)                      | 16 (29.1)                      |                         |
| Poor                         | 11 (5.0)                        | 4 (2.6)                         | 4 (2.9)                         | 8 (8.6)                                  | 4 (5.9)                                 | 6 (18.8)                       | 8 (14.5)                       |                         |
| Very poor                    | 0                               | 0                               | 2 (1.4)                         | 4 (4.3)                                  | 0                                       | 2 (6.2)                        | 3 (5.5)                        |                         |
| <b>Adjuvant therapy</b>      |                                 |                                 |                                 |  |   |                                |                                |                         |
| Chemotherapy                 | 5 (2.2)                         | 12 (7.9)                        | 4 (2.9)                         | 25 (26.9)                                | 21 (30.0)                               | 6 (18.8)                       | 16 (29.1)                      | 0.230 (<0.001)          |
| Hormone therapy              | 185 (82.2)                      | 100 (65.8)                      | 112 (80.0)                      | 42 (45.2)                                | 32 (45.7)                               | 19 (59.4)                      | 26 (47.3)                      |                         |
| Hormone therapy/chemotherapy | 14 (6.2)                        | 21 (13.8)                       | 11 (7.9)                        | 10 (10.8)                                | 6 (8.6)                                 | 4 (12.5)                       | 6 (10.9)                       |                         |
| No therapy                   | 21 (9.3)                        | 19 (12.5)                       | 13 (9.3)                        | 16 (17.2)                                | 11 (15.7)                               | 3 (9.4)                        | 7 (12.7)                       |                         |

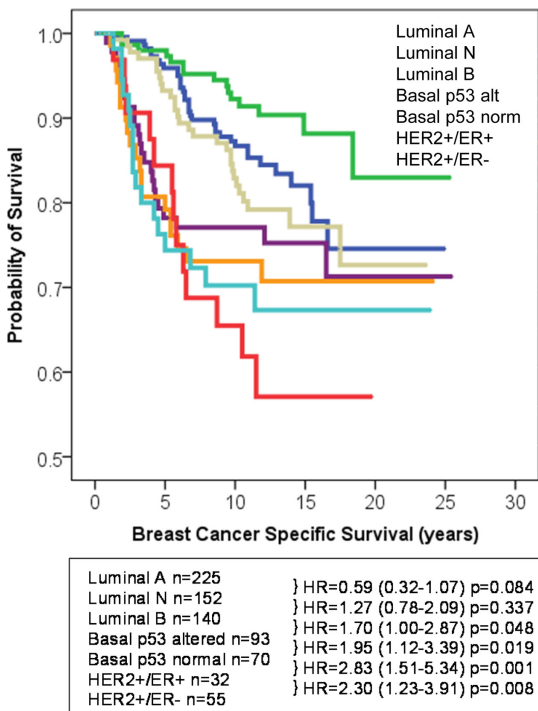


Figure 1. BCSS of the Edinburgh series with respect to NPI+ Biological Classes.

Comparison of the BCSS in each of the NPI+ Prognostic Groups between the Nottingham and Edinburgh Series showed there were no significant differences in

Table 5. Distribution of the NPI+ Groups in the Nottingham and Edinburgh series

| NPI+ group                 | Nottingham n (%) | Edinburgh n (%) |
|----------------------------|------------------|-----------------|
| <b>Luminal A</b>           |                  |                 |
| 1.1                        | 148 (17.9)       | 160 (21.2)      |
| 1.2                        | 83 (10.0)        | 53 (7.0)        |
| 1.3                        | 25 (3.0)         | 9 (1.2)         |
| <b>Luminal N</b>           |                  |                 |
| 2.1                        | 133 (16.1)       | 151 (20.0)      |
| 2.2                        | 17 (2.1)         | 1 (0.1)         |
| <b>Luminal B</b>           |                  |                 |
| 3.1                        | 77 (9.3)         | 133 (17.6)      |
| 3.2                        | 58 (7.0)         | 3 (0.4)         |
| <b>Basal - p53 altered</b> |                  |                 |
| 4.1                        | 86 (10.4)        | 78 (10.3)       |
| 4.2                        | 10 (1.2)         | 13 (1.7)        |
| <b>Basal - p53 normal</b>  |                  |                 |
| 5.1                        | 44 (5.3)         | 2 (0.2)         |
| 5.2                        | 28 (3.4)         | 68 (9.0)        |
| <b>HER2+/ER+</b>           |                  |                 |
| 6.1                        | 31 (3.7)         | 15 (1.8)        |
| 6.2                        | 25 (3.0)         | 17 (2.1)        |
| <b>HER2+/ER-</b>           |                  |                 |
| 7.1                        | 55 (6.6)         | 53 (6.4)        |
| 7.2                        | 8 (1.0)          | 0               |

patient outcome in the majority of NPI+ Prognostic Groups (Figure 2). Luminal A tumours, which had good representation in all three NPI+ Prognostic Groups, showed comparable patient outcome between the Edinburgh and Nottingham Series, as did the BCSS of the Basal p53 altered and HER2+/ER+ tumours. Certain

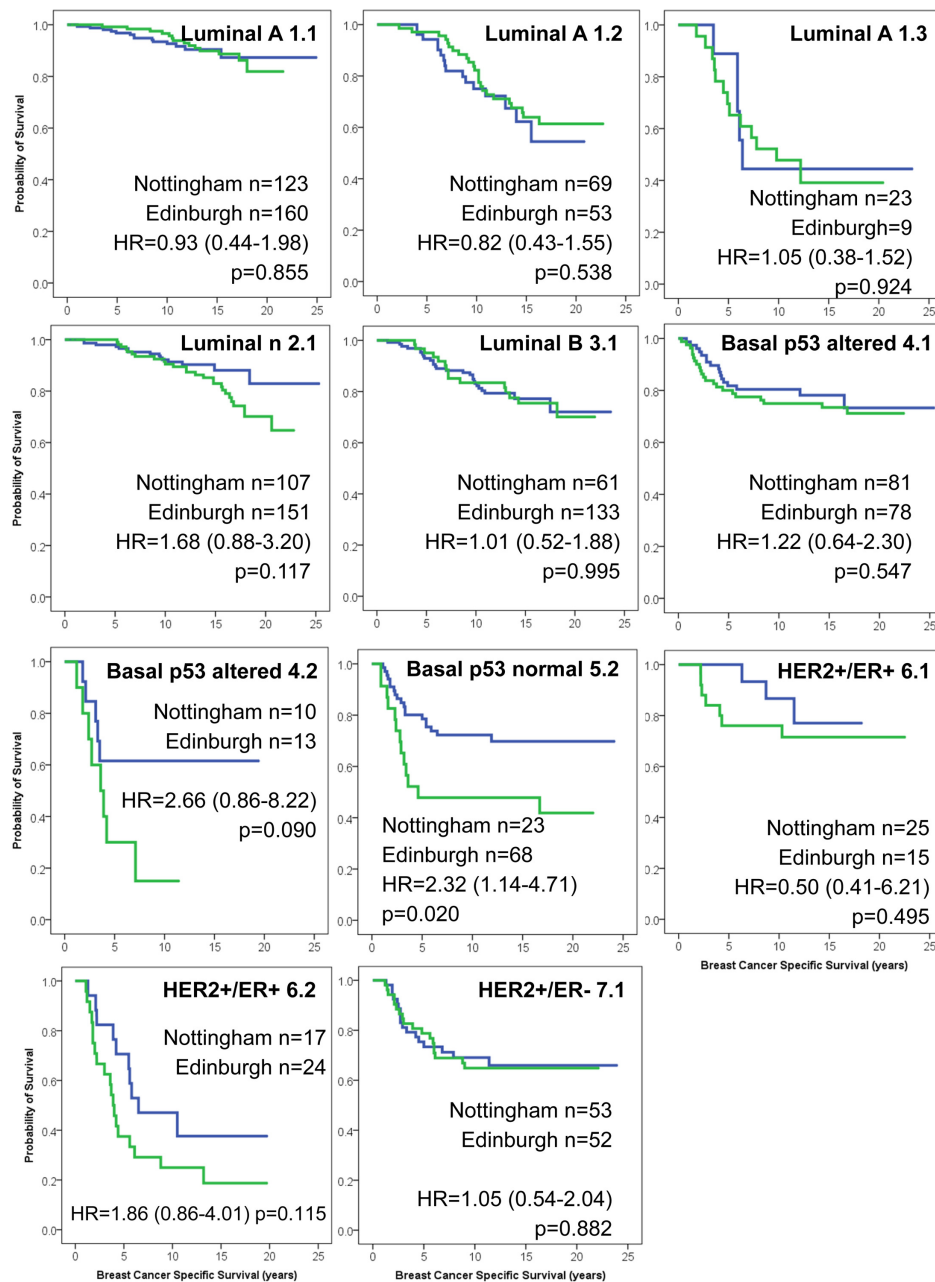


Figure 2. Patient outcome for the NPI+ Prognostic Groups, comparing the Nottingham and Edinburgh series.

NPI+ Groups (Luminal N Group 1; Luminal B Group 2; Basal p53 normal Group 2; HER2+/ER- Group) could not be compared due to being under-represented in the Edinburgh series.

## Discussion

We have developed the NPI+ methodology with a view to increasing the information available to clinicians and patients to allow them to offer more

personalised choices of adjuvant therapy in all early stage forms of BC. NPI+ was developed on a series of over 1000 BC cases from a single centre (Nottingham, UK) with long-term follow-up [11–14]. We have previously demonstrated proof-of-principle evidence of its clinical relevance [11–14]. We have, therefore, sought to validate and confirm the prognostic capabilities of NPI+ in a large independent series of BC from a separate centre (Edinburgh, UK).

Although there was some difference in the overall distribution of size, stage and grade of tumours between

the Nottingham and Edinburgh series, the distribution of the NPI+ Biological Classes (Luminal A, Luminal N, Luminal B, Basal p53 altered, Basal p53 normal, HER2+/ER+, HER2+/ER-) was similar. This is consistent with the proportion of cancer subtypes reported in other studies [3,12,14,25–32] and provides evidence that the classification of BC into seven biological classes using a discrete panel of 10 proteins assessed by immunohistochemistry is similar between series.

The second evaluation phase of NPI+ uses well-established powerful clinicopathological variables to stratify each of the NPI+ Biological Classes into clinically distinct subgroups (NPI+ Prognostic Groups) using bespoke NPI-like formulae. In all classes, a patient group with a better long-term outcome was identified which would align with clinical expectation after use of appropriate adjuvant therapy. In the Nottingham series in all seven classes, one or more subgroups of patients were identified who had an adverse long-term outcome. These latter group(s) of patients are potential candidates for additional/alternative forms of therapy as conventional BC management has failed to mitigate against higher than expected risk of tumour relapse and death from BC. It is envisaged that NPI+ can stratify patients with BCs of any biological class type into a category of expected good outcome following conventional therapy, or one or more categories of adverse outcome following conventional therapy. We fully appreciate that the NPI+ has been developed and validated on archival breast material from patients treated historically in routine practice with either chemotherapy and/or hormone therapy and does not include more contemporary treatments such as trastuzumab. Further validation of NPI+ in key BC randomised clinical trials will allow the prediction of disease recurrence under these certain treatment options.

In the Edinburgh series, the NPI+ Prognostic Groups showed comparable BCSS in the Edinburgh series when compared with the Nottingham series in NPI+ Biological Classes: Luminal A, Basal p53 altered and HER2+/ER+. The NPI+ Prognostic Groups with a better outcome were similarly validated in the NPI+ Biological Classes: Luminal B, Basal p53 normal and HER2+/ER- along with the poor NPI+ Prognostic Group in the Luminal N class. However, due to very small numbers of patients assigned in the Edinburgh series, the remaining NPI+ Prognostic Groups of biological classes Luminal N, Luminal B, Basal p53 normal and HER2+/ER- could not be validated.

In conclusion, this study shows that the distribution of the NPI+ Biological Classes are similar in an independent series of primary BC and we can conclude that biological class determination using the

NPI+ biomarker methodology is robust between patient series. We observed similar patterns of patient outcome in the majority of NPI+ Prognostic Groups between the Nottingham and Edinburgh series and can conclude that NPI+ prognostic classification for these groups (all groups of classes Luminal A, Basal p53 altered and HER2+/ER+, the good NPI+ Prognostic Groups of classes Luminal B, Basal p53 normal and HER2+/ER- and the poor NPI+ Prognostic Group of the Luminal N class) appears reproducible. Three of the poor prognostic groups (Luminal N, Luminal B, Basal p53 normal and HER2+/ER-) were under-represented in the Edinburgh series due to a lower frequency of higher grade tumours and could not be validated in this study.

### Acknowledgements

We thank Chris Sheehan and Caroline Sykes. This study was funded by the MRC DPFS scheme to establish a biomarker-based prognostic assay (NPI+) for BC.

### Author contributions

ARG, DGP, GRB, JMG, EAR and IOE conceived the study; ARG, CCN and DGP carried out experiments; ARG, DS, JS and DGP performed data analysis; IK, JT, GK, WJ, DC, TP and JMSB provided TMAs together with clinicopathological and outcome data for Edinburgh cases. All authors were involved in data interpretation, writing the paper and did final approval of the submitted and published manuscript.

### References

1. Weigelt B, Reis-Filho JS, Swanton C. Genomic analyses to select patients for adjuvant chemotherapy: trials and tribulations. *Ann Oncol* 2012; **23**(Suppl 10): x211–218.
2. Paik S, Shak S, Tang G, Kim C, Baker J, Cronin M, *et al.* A multigene assay to predict recurrence of tamoxifen-treated, node-negative breast cancer. *N Engl J Med* 2004; **351**: 2817–2826.
3. van de Vijver MJ, He YD, van't Veer LJ, Dai H, Hart AA, Voskuil DW, *et al.* A gene-expression signature as a predictor of survival in breast cancer. *N Engl J Med* 2002; **347**: 1999–2009.
4. Galea MH, Blamey RW, Elston CE, Ellis IO. The Nottingham Prognostic Index in primary breast cancer. *Breast Cancer Res Treat* 1992; **22**: 207–219.
5. Balslev I, Axelsson CK, Zedeler K, Rasmussen BB, Carstensen B, Mouridsen HT. The Nottingham Prognostic Index applied to 9,149 patients from the studies of the Danish Breast Cancer Cooperative Group (DBCG). *Breast Cancer Res Treat* 1994; **32**: 281–290.
6. D'Eredita G, Giardina C, Martellotta M, Natale T, Ferrarese F. Prognostic factors in breast cancer: the predictive value of the Nottingham



- Prognostic Index in patients with a long-term follow-up that were treated in a single institution. *Eur J Cancer* 2001; **37**: 591–596.
7. Haybittle JL, Blamey RW, Elston CW, Johnson J, Doyle PJ, Campbell FC, et al. A prognostic index in primary breast cancer. *Br J Cancer* 1982; **45**: 361–366.
  8. Brown J, Jones M, Benson EA. Comment on the Nottingham Prognostic Index. *Breast Cancer Res Treat* 1993; **25**: 283.
  9. Blamey RW, Hornmark-Stenstam B, Ball G, Blichert-Toft M, Cataliotti L, Fourquet A, et al. ONCOPOOL - a European database for 16,944 cases of breast cancer. *Eur J Cancer* 2010; **46**: 56–71.
  10. Blamey RW, Ellis IO, Pinder SE, Lee AH, Macmillan RD, Morgan DA, et al. Survival of invasive breast cancer according to the Nottingham Prognostic Index in cases diagnosed in 1990–1999. *Eur J Cancer* 2007; **43**: 1548–1555.
  11. Rakha EA, Soria D, Green AR, Lemetre C, Powe DG, Nolan CC, et al. Nottingham Prognostic Index Plus (NPI+): a modern clinical decision making tool in breast cancer. *British journal of cancer* 2014; **110**: 1688–1697.
  12. Abd El-Rehim DM, Ball G, Pinder SE, Rakha E, Paish C, Robertson JF, et al. High-throughput protein expression analysis using tissue microarray technology of a large well-characterised series identifies biologically distinct classes of breast cancer confirming recent cDNA expression analyses. *Int J Cancer* 2005; **116**: 340–350.
  13. Soria D, Garibaldi JM, Ambroggi F, Green AR, Powe D, Rakha E, et al. A methodology to identify consensus classes from clustering algorithms applied to immunohistochemical data from breast cancer patients. *Comput Biol Med* 2010; **40**: 318–330.
  14. Green AR, Powe DG, Rakha EA, Soria D, Lemetre C, Nolan CC, et al. Identification of key clinical phenotypes of breast cancer using a reduced panel of protein biomarkers. *Br J Cancer* 2013; **109**: 1886–1894.
  15. Soria D, Garibaldi JM, Green AR, Powe DG, Nolan CC, Lemetre C, et al. A quantifier-based fuzzy classification system for breast cancer patients. *Artif Intell Med* 2013; **58**: 175–184.
  16. Rakha EA, El-Sayed ME, Lee AH, Elston CW, Grainge MJ, Hodi Z, et al. Prognostic significance of Nottingham histologic grade in invasive breast carcinoma. *J Clin Oncol* 2008; **26**: 3153–3158.
  17. Thomas JS, Kerr GR, Jack WJ, Campbell F, McKay L, Pedersen HC, et al. Histological grading of invasive breast carcinoma—a simplification of existing methods in a large conservation series with long-term follow-up. *Histopathology* 2009; **55**: 724–731.
  18. Tovey S, Dunne B, Witton CJ, Forsyth A, Cooke TG, Bartlett JM. Can molecular markers predict when to implement treatment with aromatase inhibitors in invasive breast cancer? *Clin Cancer Res* 2005; **11**: 4835–4842.
  19. McCarty KS, Jr., Miller LS, Cox EB, Konrath J, McCarty KS, Sr. Estrogen receptor analyses. Correlation of biochemical and immunohistochemical methods using monoclonal antireceptor antibodies. *Arch Pathol Lab Med* 1985; **109**: 716–721.
  20. Goulding H, Pinder S, Cannon P, Pearson D, Nicholson R, Snead D, et al. A new method for the assessment of oestrogen receptor status on routine formalin-fixed tissue samples. *Hum Pathol* 1995; **26**: 291–294.
  21. Wolff AC, Hammond ME, Schwartz JN, Hagerty KL, Allred DC, Cote RJ, et al. American Society of Clinical Oncology/College of American Pathologists guideline recommendations for human epidermal growth factor receptor 2 testing in breast cancer. *J Clin Oncol* 2007; **25**: 118–145.
  22. Garcia-Caballero T, Grabau D, Green AR, Gregory J, Schad A, Kohlwes E, et al. Determination of HER2 amplification in primary breast cancer using dual-colour chromogenic in situ hybridization is comparable to fluorescence in situ hybridization: a European multicentre study involving 168 specimens. *Histopathology* 2010; **56**: 472–480.
  23. McShane LM, Altman DG, Sauerbrei W, Taube SE, Gion M, Clark GM. Reporting recommendations for tumor marker prognostic studies (REMARK). *J Natl Cancer Inst* 2005; **97**: 1180–1184.
  24. Friendly M. Visualizing Categorical Data. SAS Institute: Cary, NC, 2000.
  25. Ambroggi F, Biganzoli E, Querzoli P, Ferretti S, Boracchi P, Alberti S, et al. Molecular subtyping of breast cancer from traditional tumor marker profiles using parallel clustering methods. *Clin Cancer Res* 2006; **12**: 781–790.
  26. Callagy G, Cattaneo E, Daigo Y, Happerfield L, Bobrow LG, Pharoah PD, et al. Molecular classification of breast carcinomas using tissue microarrays. *Diagn Mol Pathol* 2003; **12**: 27–34.
  27. Perou CM, Jeffrey SS, van de Rijn M, Rees CA, Eisen MB, Ross DT, et al. Distinctive gene expression patterns in human mammary epithelial cells and breast cancers. *Proc Natl Acad Sci USA* 1999; **96**: 9212–9217.
  28. Sorlie T, Perou CM, Tibshirani R, Aas T, Geisler S, Johnsen H, et al. Gene expression patterns of breast carcinomas distinguish tumor subclasses with clinical implications. *Proc Natl Acad Sci USA* 2001; **98**: 10869–10874.
  29. van 't Veer LJ, Dai H, van de Vijver MJ, He YD, Hart AA, Bernards R, et al. Expression profiling predicts outcome in breast cancer. *Breast Cancer Res* 2003; **5**: 57–58.
  30. Nielsen TO, Parker JS, Leung S, Voduc D, Ebbert M, Vickery T, et al. A comparison of PAM50 intrinsic subtyping with immunohistochemistry and clinical prognostic factors in tamoxifen-treated estrogen receptor-positive breast cancer. *Clin Cancer Res* 2010; **16**: 5222–5232.
  31. Parker JS, Mullins M, Cheang MC, Leung S, Voduc D, Vickery T, et al. Supervised risk predictor of breast cancer based on intrinsic subtypes. *J Clin Oncol* 2009; **27**: 1160–1167.
  32. Darb-Esfahani S, Loibl S, Muller BM, Roller M, Denkert C, Komor M, et al. Identification of biology-based breast cancer types with distinct predictive and prognostic features: role of steroid hormone and HER2 receptor expression in patients treated with neoadjuvant anthracycline/taxane-based chemotherapy. *Breast Cancer Res* 2009; **11**: R69.

## SUPPLEMENTARY MATERIAL ON THE INTERNET

Additional Supporting Information may be found in the online version of this article.

The following Supporting information may be found in the online version of this article:

Table 1. Antibodies used in the NPI+.