

Concise Review: Paracrine Role of Stem Cells in Pituitary Tumors: A Focus on Adamantinomatous Craniopharyngioma

JUAN PEDRO MARTINEZ-BARBERA^a CYNTHIA L. ANDONIADOU^b

Key Words. Pituitary • Stem cells • Sox2 • Tumors • WNT pathway

^aDevelopmental Biology and Cancer Programme, Birth Defects Research Centre, Institute of Child Health, University College London, London, United Kingdom; ^bCraniofacial Development and Stem Cell Biology, King's College London, Guy's Campus, London, United Kingdom

Correspondence: Juan Pedro Martinez-Barbera, Developmental Biology and Cancer Programme, Birth Defects Research Centre, Institute of Child Health, University College London, 30 Guilford Street, London WC1N 1EH, United Kingdom. Telephone: 44-207-905-2821; Fax: 44-207-831-4366; e-mail: j.martinez-barbera@ucl.ac.uk; or Cynthia L. Andoniadou, Craniofacial Development and Stem Cell Biology, King's College London, Floor 27, Tower Wing, Guy's Campus, London SE1 9RT, United Kingdom. Telephone: 44-207-188-7389; Fax: 44-207-188-1674; e-mail: cynthia.andoniadou@kcl.ac.uk

Received June 5, 2015; accepted for publication November 30, 2015; first published online in *STEM CELLS EXPRESS* January 13, 2016.

© AlphaMed Press
1066-5099/2016/\$30.00/0

<http://dx.doi.org/10.1002/stem.2267>

This is an open access article under the terms of the Creative Commons Attribution License, which permits use, distribution and reproduction in any medium, provided the original work is properly cited.

ABSTRACT

The existence of tissue-specific progenitor/stem cells in the adult pituitary gland of the mouse has been demonstrated recently using genetic tracing experiments. These cells have the capacity to differentiate into all of the different cell lineages of the anterior pituitary and self-propagate *in vitro* and can therefore contribute to normal homeostasis of the gland. In addition, they play a critical role in tumor formation, specifically in the etiology of human adamantinomatous craniopharyngioma, a clinically relevant tumor that is associated with mutations in *CTNNB1* (gene encoding β -catenin). Mouse studies have shown that only pituitary embryonic precursors or adult stem cells are able to generate tumors when targeted with oncogenic β -catenin, suggesting that the cell context is critical for mutant β -catenin to exert its oncogenic effect. Surprisingly, the bulk of the tumor cells are not derived from the mutant progenitor/stem cells, suggesting that tumors are induced in a paracrine manner. Therefore, the cell sustaining the mutation in β -catenin and the cell-of-origin of the tumors are different. In this review, we will discuss the *in vitro* and *in vivo* evidence demonstrating the presence of stem cells in the adult pituitary and analyze the evidence showing a potential role of these stem cells in pituitary tumors. *STEM CELLS* 2016;34:268–276

SIGNIFICANCE STATEMENT

In this concise review, we aim to discuss the accumulated evidence suggesting the presence of PSCs within the adult pituitary gland and the potential role of these cells in normal organ homeostasis. Additionally, we will elaborate on the data supporting the existence of CSCs in human and mouse tumours with particular emphasis to the role of pituitary PSCs in the aetiology of human craniopharyngioma.

INTRODUCTION

In recent years, solid evidence has emerged for the existence of a tissue-specific population of undifferentiated progenitors or stem cells within the hormone-secreting anterior pituitary gland (pituitary stem cells, PSCs). These long-lived, undifferentiated cells have the capacity to directly commit or generate daughter cells of three main progenitor lineages, characterized by respective expression of three transcription factors, PIT1 (POU1F1), TPIT (TBX19), and SF1 (NR5A1). Expression of these factors is a necessary step toward differentiation into a hormone-secreting cell in the pituitary, where: PIT1-positive cells give rise to GH-expressing somatotrophs, PRL-expressing lactotrophs, and TSH-expressing thyrotrophs (PIT1-cell lineage); TPIT-positive cells give rise to ACTH-expressing adrenocorticotrophs and melatotrophs; and finally, SF1-positive cells give

rise to LH- and FSH-expressing gonadotrophs. The precise regulation of these populations ensures effective homeostasis and is dynamic throughout life, largely dependent on physiological demand. This can also be influenced by damage to pituitary tissue or to any of its target endocrine organs, and can be affected during disease states.

Similar to organ-specific stem cells, analyses of many tumors and cancers have revealed the presence of multipotent cells, often thought to drive tumor formation. Conceptually, cancer stem cells (CSCs) are characterized by two features: (a) self-renewal and (b) capability to generate the mass of the tumor/cancer cells in a cell-autonomous manner (i.e., the tumor cells are descendants of the CSCs). This definition does not relate to their potential origin, whether these are normal tissue-specific somatic stem cells, progenitors or differentiated cells. Experimentally, CSCs are

determined by the identification of specific cells able to propagate a tumor/cancer and replicate its cellular composition in a relevant experimental setting, ideally in situ, either by lineage tracing or orthotopic transplantation. These have been isolated from leukemia and solid tumors [1–5]. Generally, CSCs represent a small population of the tumor mass but are able to drive tumorigenesis when transplanted into a host, usually immunosuppressed mice (e.g., nonobese diabetic/severe combined immunodeficiency [NOD/SCID] mouse) [6]. CSCs are endowed with molecular and cellular properties that make them particularly resistant to common anti-cancer agents and radiotherapy [7, 8]. They are often, although not necessarily, slow cycling or quiescent (nondividing) cells [9], and therefore antiproliferative agents or radiotherapy have little or no effect despite causing shrinking of the tumor mass [10]. Similarly, CSCs express high levels of proteins that confer resistance to cytotoxic compounds such as anti-cancer drugs (e.g., ABC transporters, and aldehyde dehydrogenase) [11]. It is generally thought that effective anti-cancer therapies should aim to eliminate the bulk of the tumor cells as well as the resident CSCs.

Many of the properties of CSCs are shared by normal tissue-specific stem cells; slow cycling status, self-renewal, and differentiation capacity and even resistance to cytotoxic drugs. For some tumors, it has been shown that normal stem cells are transformed into CSCs when targeted to express oncogenic proteins. For instance, stem cells of the intestinal crypt become CSCs when the WNT/ β -catenin pathway is overactivated [12, 13]. However, progenitor cells or even differentiated cells could give rise to CSCs upon oncogenic transformation [6, 14].

In this concise review, we aim to discuss the accumulated evidence suggesting the presence of PSCs within the adult pituitary gland and the potential role of these cells in normal organ homeostasis. Additionally, we will elaborate on the data supporting the existence of CSCs in human and mouse tumors with particular emphasis to the role of pituitary PSCs in the etiology of human craniopharyngioma. For more detailed discussion, we refer the reader to other recent reviews [15–19]

CELLULAR AND MOLECULAR PROPERTIES OF PSCS

Two initial studies revealed postnatal mouse pituitary populations with in vitro self-renewal capabilities; one population was shown capable of forming adherent colonies, and was characterized by the uptake of the fluorescent dipeptide β -Ala-Lys-N ϵ AMCA (AMCA is 7-amino-4-methylcoumarin-3-acetic acid) and included cells expressing S100 calcium-binding protein B (S100 β) [20], which have been described as folliculostellate cells of the anterior lobe [21]. The other population was shown to form nonadherent spheres under clonal conditions in culture and characterized by marker expression relevant to stem cells of other tissues: expression of *Sca1*, *Oct4*, and *Nanog* [22]. The same group later showed that cells within this population were enriched for SOX2, SOX9, CD44, and CD133 [23]. These cells had the capacity to efflux the vital dye Hoechst 33342, mainly through ABC transporter function, generating a “side population” during flow cytometry. This is typical of many cell types with stem/progenitor properties and the side population has been described for

pituitaries of other vertebrates [22, 24, 25]. Since these early characterizations, many additional markers of cells with in vitro clonogenic capacity (another characteristic of stem cells) have been proposed, such as Nestin, PROP1, SOX9, GFR α 2, and PRX1/2 [26–30]. The transcription factor SOX2 is highly associated with pluripotency in the early embryo, in embryonic stem cells (ESCs) and induced pluripotent stem cells (iPSCs), as well as the stem cell state in multiple embryonic and adult tissues. In the pituitary, it was shown to define a population, which exclusively contains cells capable of both adherent and nonadherent clonogenic colony formation (Fig. 1) [31, 32]. In vivo in the postnatal rodent gland, SOX2-positive cells show a high degree of overlap with other proposed stem cell markers such as PROP1 [27, 33], PRX1/2 [30], and SOX9 [28].

Although SOX2-positive cells do not express any hormone and SOX2 expression does not overlap with expression of the committed progenitor markers, the population has a heterogeneous nature in terms of properties, where only a low proportion (2.5%–5%) are shown to be capable of in vitro self-renewal. This suggests that perhaps not all SOX2-positive cells in the pituitary have stem cell capacity, or that our current assay methodologies select a subpopulation, perhaps at a particular primed state or phase of the cell cycle, and maybe the remainder of the SOX2-positive cells would flourish under alternative conditions. Both cases highlight the need for better marker characterization, whose overlapping combination would possibly define the true pituitary stem cell, poised for activation. Purifying pituitary cells based on S100 β expression using S100 β -GFP transgenic animals enriches in vitro colony formation, a property lying exclusively within the SOX2-positive component [34], hence suggesting that the overlapping population is likely to be enriched in stem cells and the strong association of S100 β with multiple proposed pituitary stem cell populations makes this protein a good candidate marker. Indeed, there is significant overlap between SOX2 and S100 β positivity [31, 34] (Fig. 1). On its own, S100 β marks multiple populations, displaying expression in the SOX2-positive marginal zone region, in the morphologically distinct folliculostellate cells and reported to be expressed in pituicytes. In rat, at least two distinct S100 β populations have been isolated, one with processes typical of folliculostellate cells, which is positive for GFAP and vimentin and a second, morphologically rounded cell type lacking processes, which express dendritic markers [35]. Multiple functions have been put forward for S100 β -positive folliculostellate cells reviewed comprehensively elsewhere [36], including providing structural support and enabling communication within the pituitary facilitating pulsatile hormone secretion [37, 38]. A further attribute of these cells is the production of paracrine signals that contribute to the regulation of surrounding endocrine cells. For example, synthesis and secretion of FSH in gonadotrophs is mediated by activin, and regulated by the activin-binding protein follistatin, both of which are produced by folliculostellate cells [39]. Numerous other paracrine factors secreted by these cells have been identified, including interleukin-6 (IL-6), leukemia inhibitory factor (LIF), vascular endothelial growth factor (VEGF), and basic fibroblastic growth factor (bFGF), all of which contribute to pituitary function [40–42].

The location of cells expressing SOX2/S100 β has also been proposed to enable stem cell function. The marginal zone,

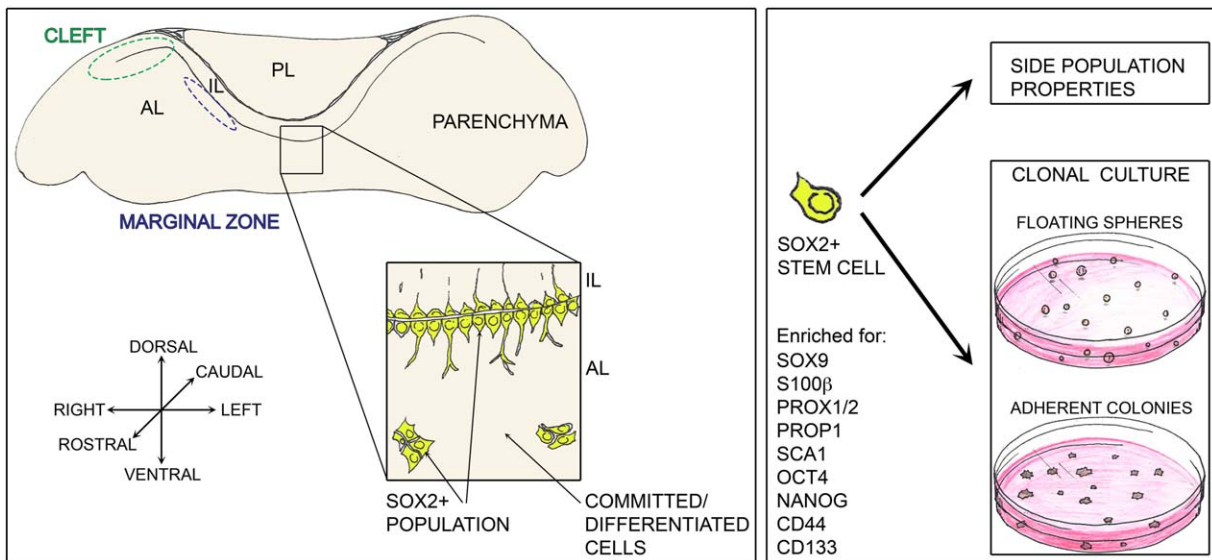


Figure 1. Stem cells in the anterior lobe of the mouse anterior pituitary. Pituitary stem cells (PSCs) reside within the SOX2⁺ population (yellow cells), which in the anterior lobe are located in the marginal zone epithelium at the interface with the intermediate lobe and enriched at the cleft, the lateral edges of the epithelium. SOX2⁺ cells are additionally found throughout the anterior lobe parenchyma. PSCs are enriched through efflux studies enabling isolation of a side population and are defined by their clonogenic capacity in vitro, cultured either as floating spheres or adherent colonies. A number of markers enriched in PSCs have been proposed; some of the commonly used are summarized here. Abbreviations: IL, intermediate lobe, AL, anterior lobe, PL, posterior lobe.

lining the remnants of Rathke's pouch lumen, retains an epithelium of SOX2⁺ cells on either side. Additionally, SOX2⁺ cells are found in groups distributed among hormone-secreting cells (Fig. 1). The in vitro clonogenic potential of SOX2 cells does not differ between the two locations [35] and it has been postulated that these cells form a network spanning the whole pituitary, making connections through their projections [43]. Recent studies from rat have revealed that SOX2⁺/S100β⁺ double-expressing cells include a further subset that express the gene *Cxadr* in vivo, which codes for coxsackievirus and adenovirus receptor (CAR), that facilitates formation of homophilic tight junctions [44]. Furthermore, expression of E-cadherin and the juxtacrine factor ephrin-B2 reportedly define SOX2⁺/S100β⁺/CAR⁺ cells, both in the marginal epithelium and throughout the parenchyma [44, 45]. Analysis of the side population by the group of Vankelecom had also reported enrichment in ephrin-B expression in this stem cell-rich compartment [46].

CONTRIBUTION OF STEM CELLS IN THE LONG-TERM MAINTENANCE OF THE ANTERIOR PITUITARY

Despite a plethora of identified markers, until recently, there was no evidence to support that pituitary stem cells function as such in vivo. This changed with the generation of two similar genetic tools, inducible mouse strains expressing CreERT2 under the regulation of the SOX2 promoter generated by the Hochedlinger and Martinez-Barbera/Pevny labs [34, 47]. In these, Cre is expressed in cells expressing *Sox2*, but will not be active until the administration of tamoxifen, allowing temporal control of recombinase action. Although the expression construct of these two strains is not identical, the expression of CreERT2 faithfully reproduces that of *Sox2* in both. We

used one of these mouse strains to lineage trace cells expressing *Sox2* beginning at different stages, both during gestation and postnatally [34]. Similarly, the Lovell-Badge group used the strain generated by the Hochedlinger laboratory to trace *Sox2*-expressing cells from embryonic stages [28]. In all cases, *Sox2*-expressing cells gave rise to all committed progenitor cell types (PIT1, TPIT, SF1), and thus all hormone-secreting cell types of the anterior lobe (GH, PRL, TSH, ACTH, LH/FSH). One limitation of this assay is that it does not distinguish between a multipotent population of *Sox2*-expressing cells and the possibility that several oligopotent or unipotent populations of *Sox2*-expressing cells exist, collectively giving rise to all differentiated lineages. To demonstrate that the population of SOX2⁺ cells is not depleted, as would be expected by transit-amplifying progenitor cells, we activated CreERT2 in SOX2⁺ cells by postnatal tamoxifen administration, enabling expression of *R26R-EYFP* and cells were traced for 6 months. At the end of this period, descendants of SOX2⁺ cells were flow sorted for EYFP expression and cultured to assess clonogenic potential, a property contained only among SOX2⁺ cells. Most of the cells with clonogenic potential were residing in the EYFP positive fraction, suggesting that SOX2 cells are either long-lived hence persisting after their initial labeling, or maintained as a self-renewing pool of stem cells derived from the originally labeled SOX2⁺ cells. If SOX2⁺ cells were a population of transit amplifying cells with short-term uncommitted proliferative potential, we would expect that this population would become depleted and lose properties associated with the stem cell state, such as clonogenic capacity, following their commitment/differentiation. Complementing this, following postnatal tamoxifen inductions we found a significant population of uncommitted SOX2⁺ and SOX9⁺ cells up to a year following tamoxifen administration. The above experiments demonstrate the presence of a long-lived population that retains pituitary stem cell properties throughout normal life.

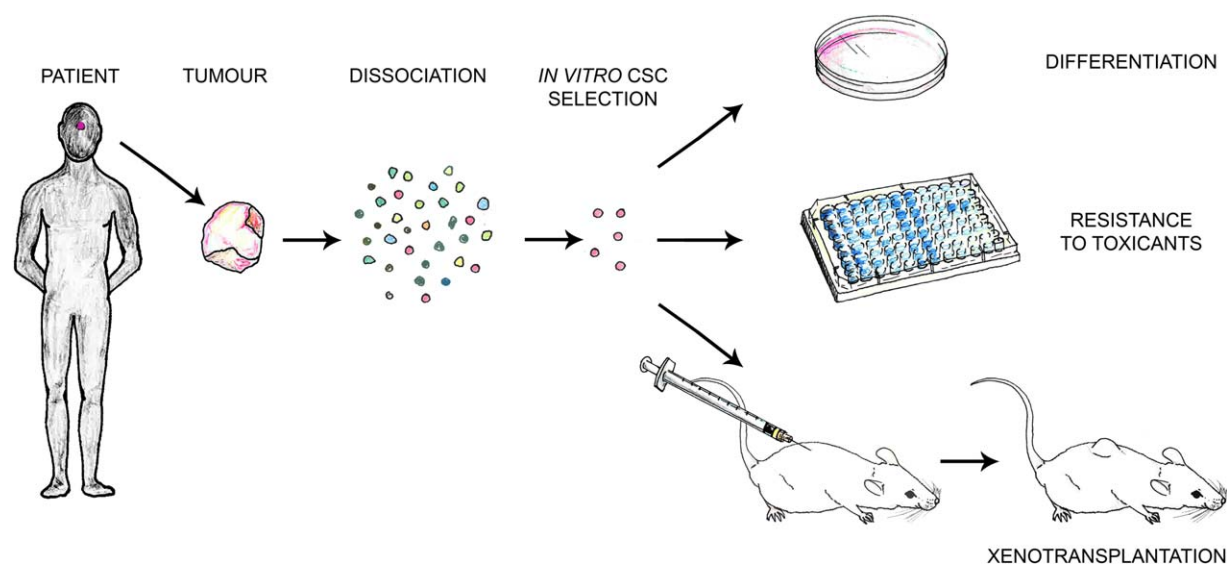


Figure 2. Methods of cancer stem cell characterization in human pituitary adenoma. Fresh tumor tissue can be dissociated and cancer stem cells (CSC) selected in vitro based on culture properties and marker expression. Assays to determine CSC potential are in vitro differentiation to determine their multipotent nature for appropriate tissue lineages, assays to determine possible resistance to cytotoxic compounds (characteristic of CSCs), and xenotransplantation into animal models where CSCs are expected to reinitiate tumor growth. Abbreviation: CSC, cancer stem cell.

STEM CELLS FROM PITUITARY TUMORS

Several groups have reported the presence of putative CSCs in pituitary adenomas isolated from mice and humans [18, 48–55]. The criteria for a cell to be termed a CSC are based on some or all of the following properties: (a) self-propagation in vitro (clonogenic potential); (b) multipotent differentiation capacity; (c) expression of “stemness” markers; (d) chemoresistance; (e) tumorigenic potential in transplantation experiments.

A summary of the experimental approach used is as follows (Fig. 2): tumors are dissociated into single cell suspensions and cultured in vitro in stem cell-promoting media, which contains fibroblast growth factor (FGF) and epidermal growth factor (EGF) but no serum. After a few days, floating spheres emerge, which can be passaged several times and forced to differentiate into hormone-producing cells when cultured in media supplemented with serum and/or hypothalamic stimulating factors controlling anterior pituitary function, and in the absence of growth factors. In some studies, the side population assay has been used to purify tumor cells able to efflux Hoechst dye, enriching for potential CSCs [17, 23, 56]. These resulting tumor-derived spheres express markers associated with stemness (e.g., Nestin, SOX2, SCA1, and CD133) and do not express differentiation markers (e.g., growth hormone). In one study, it has been shown that the undifferentiated cells contained in the spheres are more resistant to chemotherapeutics than differentiated cells [49]. These in vitro-grown spheres contain tumor-propagating cells capable to generate tumors when transplanted into the brain [49, 50] or under the skin [48] of immunosuppressed mice. In one study, grafted tumors have been proven to be serially transplantable [49].

Overall, these reports have provided evidence supporting the existence of CSCs with tumor-propagating capacity. However, several questions remain unanswered, among them: (a) Do CSCs arise from PSCs? PSCs and CSCs share similar proper-

ties, for instance in vitro self-propagation and differentiation potential, and it is likely that PSCs are also chemoresistant, since a side population that is enriched for PSCs can be purified from normal mouse pituitaries using the vital dye Hoechst efflux assay [23]. (b) Can CSCs generate pituitary tumors when transplanted orthotopically in the pituitary of host mice? Orthotopic transplantations have not been performed due to technical difficulties. These experiments will reveal whether CSCs can be tumorigenic in a normal pituitary gland environment. Related to this latter question, (c) can normal PSCs generate tumors when transplanted heterotopically in the brain? Human PSCs may be difficult to obtain, but mouse PSCs are readily available.

In our opinion, questions (b) and (c) are very relevant because they will assess the effects of the culture conditions and cellular microenvironment on the tumorigenic capacity of normal PSCs and of CSCs. Although generally speaking normal stem cells do not form tumors, the potential of tumor development is considered as one of the risks of the use of stem cells in regenerative medicine [57, 58]. Normal hematopoietic stem cells do not form tumors when injected into recipient subjects, however, the evidence for other somatic stem cells is not as solid and there are cases where “normal donor-derived somatic stem cells” have been found to be the origin of cancers in transplanted human and mouse hosts [59–61]. Normal untransformed PSCs could acquire genetic or epigenetic alterations during their culture period, which may predispose them to form tumors, as described for other stem cells [62]. The local environment in which the stem cell resides may also influence its tumorigenic potential. The concept of how the cellular environment can affect the potential tumorigenic effects of cells is beautifully exemplified by the capacity of normal mouse and human embryonic stem cells to generate either teratomas, when heterotopically transplanted into adult mouse tissues, or normal chimeric organs, when transplanted into developing embryos [63–65].

Similarly, the expansion of clonogenic pituitary CSCs before transplantation that has been carried out in all published reports could select for specific cell populations present in the tumor or even induce genetic or epigenetic changes that could account for the tumorigenic effect described. Fresh cell suspensions from pituitary tumors that have not been cultured in vitro should also be tested in transplantation experiments. In this regard, a recent report has shown how critical the influence of the in vitro manipulations may be on the final outcome of the transplantations. Human glioma tumor cells cultured in stem cell-promoting medium generate tumors of human origin in orthotopic xenotransplantations, whilst fresh cell suspensions induce tumors of mouse origin, suggesting a paracrine influence on the host tissue [66]. Perhaps, future mouse experiments should also address the tumorigenic potential of “normal” PSCs when transplanted heterotopically.

PARACRINE CONTRIBUTION OF STEM CELLS TO TUMORIGENESIS

Recent studies of a type of pituitary tumor called adamantinomatous craniopharyngioma (ACP) have revealed a critical role for mutated PSCs in promoting tumorigenesis through paracrine activities.

ACPs are aggressive tumors of the sellar region due to their tendency to infiltrate the brain, optic pathways and nearby vascular structures [67]. Although it can affect adults, ACP is mostly a pediatric tumor and represents the most common pituitary tumor in children [68]. Mutations in *CTNNB1*, the gene encoding β -catenin, have been identified in the majority of ACP samples [69]. These mutations are predicted to interfere with β -catenin degradation resulting in the accumulation of the protein and the over-activation of the WNT/ β -catenin pathway [70]. Indeed, immunostaining analysis has revealed the presence of a small population of cells accumulating nucleocytoplasmic β -catenin, the hallmark of pathway activation, either dispersed throughout the tumor or grouped forming cell clusters [71]. These clusters are a typical histological finding of human ACP that is not observed in any other pituitary tumor [72]. Studies in mouse models have provided important insights into the etiology and pathogenesis of human ACP.

It has been shown that the expression of a degradation-resistant form of β -catenin in Rathke's pouch (RP) precursors in the mouse (*Hesx1^{Cre/+}; Ctnnb1^{lox(ex3)/+}* mouse model) is sufficient to form tumors that are very similar to human ACP [73]. RP is the primordium of the anterior pituitary and contain undifferentiated precursors capable of self renew transiently and generate all of the hormone-producing cells of the anterior pituitary. As the human ACP, mouse tumors contain nucleocytoplasmic-accumulating cell clusters that activate the WNT/ β -catenin pathway. Moreover, gene profiling analysis has shown cell clusters are likely to represent similar structures in human and mouse ACP [32].

Human ACPs have not been analyzed for the presence of CSCs as previously described for human adenoma. Reports have suggested the presence of stem cell marker expression in human ACPs [74, 75], but so far no functional characterization has been performed. If CSCs exist in these benign tumors, the mutational landscape seems to be very restricted

as no recurrent mutations have been found in addition to those in β -catenin. There have been rare cases of malignant ACP, possibly linked to the use of radiotherapy [76–78]. In these malignant neoplasms p53 is over-expressed [79], perhaps indicating that other mutations may have been induced as the result on the irradiation generating more aggressive CSCs.

Mouse ACPs, however, have been shown to contain cells capable of self-propagation and differentiation properties in vitro [73]. Relative to normal pituitary glands, mouse ACPs contain up to threefold higher numbers of clonogenic cells when cultured in stem cell-promoting medium, suggesting an enlargement of the stem cell compartment in these tumors. These cells express stemness markers such as *Sox2* and *Nestin*, and show very low levels of expression of differentiation markers. Moreover, time-lapse microscopy has revealed that the proliferation rate of clonogenic cells in the tumors is elevated 1.7-fold compared with normal PSCs isolated from control pituitaries. Whether these clonogenic cells can generate tumors when transplanted remain to be tested.

Further studies in mice, aiming to understand the role of PSCs in generation of ACP tumors have been performed. Expression of oncogenic β -catenin specifically in *SOX2⁺* stem cells of the adult pituitary (*Sox2^{CreERT2/+}; Ctnnb1^{lox(ex3)/+}* mouse model) also results in tumors that are similar to human ACP [34]. These mouse tumors contain cell clusters showing nucleocytoplasmic β -catenin and are undifferentiated (i.e., do not express any hormone), as the human tumors. This mouse model has been used to trace the descendant cells of the mutated *SOX2⁺* PSCs, a technique referred to as “genetic tracing” [80]. *SOX2⁺* cell are targeted to express simultaneously oncogenic β -catenin and yellow fluorescent protein (YFP), the former is the oncogenic stimulus and the latter allows identification of all the daughter cells derived from the mutated *SOX2⁺* PSCs. These experiments have revealed that the typical cell clusters derive from *SOX2⁺* cells, but intriguingly, the bulk of the tumor mass does not. In other words, mutated *SOX2⁺* cells are not transformed into CSCs by oncogenic β -catenin; mutated *SOX2⁺* PSCs generate cell clusters that have the capacity to induce tumors in a paracrine fashion so that the tumor cells are not derived from *SOX2⁺* cells [34] (Fig. 3, paracrine paradigm). Although not proven, it is possible that the paracrine activities of the clusters induce CSCs, which become the cell-of-origin of the tumors. In agreement with this notion, cluster cells express a vast array of growth factors, chemokines and cytokines, and are acting as signaling centers, possibly changing the tumor microenvironment and facilitating tumorigenesis [32, 34]. Of relevance, expression of several cytokines and growth factors have been shown to play a role in normal pituitary physiology as well as in pituitary adenoma, a more prevalent pituitary tumor in humans [40, 81, 82].

BROADER IMPLICATIONS OF THE PARACRINE MODEL OF TUMORIGENESIS IN THE CANCER FIELD

CSCs carry mutations in oncogenes and tumor suppressors, which are mostly responsible for their tumorigenic behavior. The identification of these mutations in human neoplasms is of much clinical relevance, as this is the first step toward the

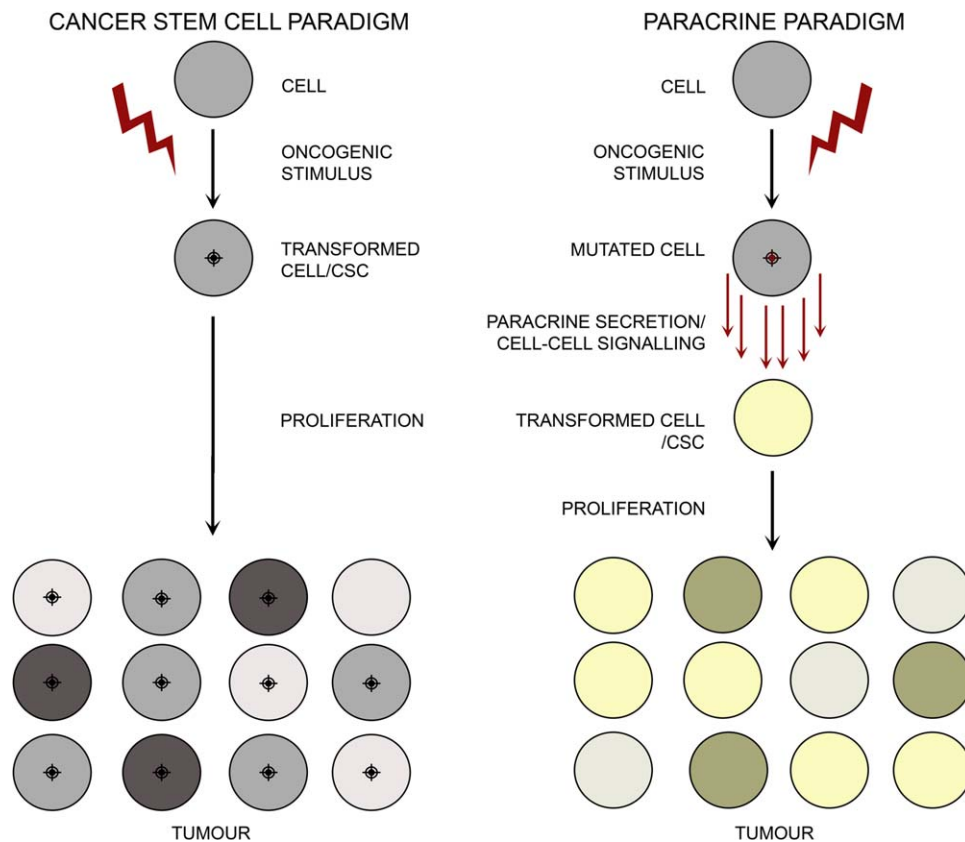


Figure 3. Schematic comparing two models of tumor formation: the cancer stem cell and paracrine paradigms. In the cancer stem cell paradigm (left), a cell, which may be a stem cell, committed or differentiated cell becomes transformed into a cancer stem cell (CSC) upon exposure to an oncogenic stimulus. This transformed CSC proliferates to give rise to direct derivatives that compose the tumor mass. In the paracrine paradigm, upon receipt of the oncogenic stimulus the cell becomes secretory. The paracrine signals emanating from this mutated cell can be perceived by a competent surrounding cell that will become transformed to act like a CSC and become the cell-of-origin of the tumor. Abbreviation: CSC, cancer stem cell.

development of specific therapies to kill these cells that drive neoplasia. The better understanding of the early steps that lead to the generation of CSCs is also relevant, as this may lead to development of early diagnostic tools that would allow the treatment of human neoplasms at incipient stages, possibly where they are more vulnerable to anti-cancer therapies. The pertinent question is what drives the oncogenic transformation and generation of CSCs?

An excess of growth factors/mitogenic signals may lead to cell transformation. For instance, by over-activating the same pathways affected by oncogenic mutations (e.g., β -catenin, BRAF, KRAS, PATCH1 among others) resulting in increased cell proliferation, DNA replicative stress, DNA damage, and eventually genetic mutations conferring tumorigenic capacity in transformed cells. Compatible with this notion, the synthesis and secretion of human TGF- α by rat fibroblasts results in the loss of anchorage-dependent growth in vitro and tumor formation in nude mice [83]. Similarly, over-expression of platelet-derived growth factor (PDGF) in neural precursors is sufficient to induce brain tumors resembling human glioma [84, 85]; basic fibroblast growth factor (bFGF) [86] can also transform normal cells resulting in tumors. This may apply to many more growth factors including EGF, insulin, and hepatocyte growth factor (HGF) among others [87].

Genetic evidence in mouse has also shown that tumors/cancers can develop in a noncell autonomous manner,

whereby the bulk of the tumor mass consists of cells that do not carry the oncogenic mutations. For instance, conditional deletion of *Notch1* in mouse skin epidermis [88] or hair follicles stem cells [89] leads to overactivation of the WNT/ β -catenin pathway and induction of tumors in a noncell autonomous manner (i.e., the tumor cells are wild type for *Notch1*). Additionally, the expression of a constitutively active form of MEK1, activating the Erk mitogen-activated protein kinase (MAPK) pathway, in mouse epidermis results in skin polyps which are mostly formed by wild-type cells for MEK1 [90]. These examples, however, do not demonstrate cellular transformation or tumor-propagating potential of the cells that do not carry the oncogenic hit.

Two recent manuscripts have shown that cell transformation can occur in a paracrine manner in vivo. In a hepatocellular carcinoma mouse model, it was demonstrated that deletion of the tumor suppressor gene p53 specifically in hepatic stellate cells induces epithelial tumors that are mostly wild type for p53 [91]. More strikingly, in a mouse model for leukemia the expression of a degradation resistant form of β -catenin (i.e., the same used to generate mouse ACP) in osteoblast precursors is sufficient to generate oncogenic hematopoietic stem cells (HSCs) capable of giving rise to acute myeloid leukemia (AML). Moreover, transplantation of wild-type bone-marrow cells to lethally irradiated mice expressing mutant β -catenin in osteoblasts also results in AML,

suggesting a critical role of the niche environment in cell transformation. Furthermore, transplantation of long-term repopulating HSC progenitors, but not other hematopoietic populations, can propagate AML when transplanted into wild-type hosts, indicating that they have become CSCs and do not require the paracrine activities of the osteoblasts [92].

We think that the studies cited above provide support to the potential tumor-inducing properties of the β -catenin-accumulating cluster cells in mouse and human ACP. These cluster cells express members of the TGF, FGF, and PDGF families of growth factors among many others. In addition, the extracellular matrix (ECM) is also altered around the clusters [34]. Therefore, cluster cells may be signaling to surrounding cells either through cell–cell interactions or secreted factors, with overstimulation of signaling pathways leading to changes in receptive cells. Circumstantially, actively proliferating cells stained by Ki67 immunostaining can be detected in close proximity to the cell clusters [73]. Further research will reveal the mechanisms whereby cell clusters may induce paracrine cell transformation and promote tumor growth.

CONCLUSIONS

Murine and human studies have provided support to the idea that CSCs play a role in pituitary tumorigenesis. Moreover, analyses of a mouse model for human craniopharyngioma have revealed that paracrine signaling may be critical in tumour initiation. It may be argued that paracrinicity is only of relevance to the understanding of benign tumours. However, once tumours progress into malignancy, cancer cells may be self-sufficient and able to generate the trophic factors needed for survival and growth, independent of the initial signals that cause

cell transformation. Even if this latter scenario is real, elucidating these initial stages of tumorigenesis will provide with a better grasp of the pathways that initiate these malignancies. Such knowledge could translate to the discovery of early diagnostic biomarkers, which could detect the cancer at incipient stages of development, when tumour cells are more susceptible to anti-cancer treatments. Efforts to better characterise and understand the potential of normal stem cells of the pituitary gland can only enhance our ability to comprehend their possible role in pituitary tumour formation and propagation, which can lead to more effective prognosis and treatments.

ACKNOWLEDGMENTS

We thank Dr Paul Le Tissier for critical reading of this manuscript. We would like to apologise to authors whose work was not included in the interest of space. This work was supported by grants: W1055 from Children with Cancer UK (CWCUK) and Great Ormond Street Hospital Children's Charity (GOSHCC); 164126 from the Medical Research Council (MRC) and by the National Institute for Health Research Biomedical Research Centre at Great Ormond Street Hospital for Children NHS Foundation Trust and University College London.

AUTHOR CONTRIBUTIONS

J.P.M.B. and C.L.A. wrote the manuscript and approved the final version for publication.

DISCLOSURE OF POTENTIAL CONFLICTS OF INTEREST

The authors indicate no potential conflicts of interest.

REFERENCES

- Alison MR, Murphy G, Leedham S. Stem cells and cancer: A deadly mix. *Cell Tissue Res* 2008;331:109-124.
- Clarke MF, Fuller M. Stem cells and cancer: Two faces of eve. *Cell* 2006;124:1111-1115.
- Nguyen LV, Vanner R, Dirks P et al. Cancer stem cells: An evolving concept. *Nat Rev Cancer* 2012;12:133-143.
- Rosen JM, Jordan CT. The increasing complexity of the cancer stem cell paradigm. *Science* 2009;324:1670-1673.
- Visvader JE, Lindeman GJ. Cancer stem cells: Current status and evolving complexities. *Cell Stem Cell* 2012;10:717-728.
- Clevers H. The cancer stem cell: Premises, promises and challenges. *Nat Med* 2011;17:313-319.
- Diehn M, Cho RW, Lobo NA et al. Association of reactive oxygen species levels and radioresistance in cancer stem cells. *Nature* 2009;458:780-783.
- Vlashi E, McBride WH, Pajonk F. Radiation responses of cancer stem cells. *J Cell Biochem* 2009;108:339-342.
- Stange DE, Clevers H. Concise review: The yin and yang of intestinal (cancer) stem cells and their progenitors. *Stem Cells* 2013;31:2287-2295.
- Li L, Bhatia R. Stem cell quiescence. *Clin Cancer Res* 2011;17:4936-4941.
- Abdullah LN, Chow EK. Mechanisms of chemoresistance in cancer stem cells. *Clin Transl Med* 2013;2:3.
- Barker N, Ridgway RA, van Es JH et al. Crypt stem cells as the cells-of-origin of intestinal cancer. *Nature* 2009;457:608-611.
- Zhu L, Gibson P, Currie DS et al. Prominin 1 marks intestinal stem cells that are susceptible to neoplastic transformation. *Nature* 2009;457:603-607.
- Valent P, Bonnet D, De Maria R et al. Cancer stem cell definitions and terminology: The devil is in the details. *Nat Rev Cancer* 2012;12:767-775.
- Florio T. Adult Pituitary Stem Cells: From pituitary plasticity to adenoma development. *Neuroendocrinology* 2011;94:256-277.
- Davis SW, Ellsworth BS, Perez Millan MI et al. Pituitary gland development and disease: From stem cell to hormone production. *Curr Top Dev Biol* 2013;106:1-47.
- Vankelecom H, Chen J. Pituitary stem cells: Where do we stand? *Mol Cell Endocrinol* 2014;385:2-17.
- Lloyd RV, Hardin H, Montemayor-Garcia C et al. Stem cells and cancer stem-like cells in endocrine tissues. *Endocr Pathol* 2013;24:1-10.
- Nassiri F, Cusimano M, Zuccato JA et al. Pituitary stem cells: Candidates and implications. *Pituitary* 2013;16:413-418.
- Lepore DA, Roeszler K, Wagner J et al. Identification and enrichment of colony-forming cells from the adult murine pituitary. *Exp Cell Res* 2005;308:166-176.
- Vila-Porcile E. [The network of the folliculo-stellate cells and the follicles of the adenohypophysis in the rat (pars distalis)]. *Z Zellforsch Mikrosk Anat* 1972;129:328-369.
- Chen J, Hersmus N, Van Duppen V et al. The adult pituitary contains a cell population displaying stem/progenitor cell and early embryonic characteristics. *Endocrinology* 2005;146:3985-3998.
- Chen J, Gremeaux L, Fu Q et al. Pituitary progenitor cells tracked down by side population dissection. *Stem Cells* 2009;27:1182-1195.
- van Rijn SJ, Gremeaux L, Riemers FM et al. Identification and characterisation of side population cells in the canine pituitary gland. *Vet J* 2012;192:476-482.
- Chen J, Crabbe A, Van Duppen V et al. The notch signaling system is present in the postnatal pituitary: Marked expression and regulatory activity in the newly discovered side population. *Mol Endocrinol* 2006;20:3293-3307.
- Gleiberman AS, Michurina T, Encinas JM et al. Genetic approaches identify adult pituitary stem cells. *Proc Natl Acad Sci USA* 2008;105:6332-6337.
- Yoshida S, Kato T, Susa T et al. PROP1 coexists with SOX2 and induces PIT1-commitment cells. *Biochem Biophys Res Commun* 2009;385:11-15.

- 28 Rizzoti K, Akiyama H, Lovell-Badge R. Mobilized adult pituitary stem cells contribute to endocrine regeneration in response to physiological demand. *Cell Stem Cell* 2013; 13:419-432.
- 29 Garcia-Lavandeira M, Quereda V, Flores I et al. A GRFa2/Prop1/stem (GPS) cell niche in the pituitary. *PLoS One* 2009;4:e4815.
- 30 Higuchi M, Yoshida S, Ueharu H et al. PRRX1 and PRRX2 distinctively participate in pituitary organogenesis and a cell-supply system. *Cell Tissue Res* 2014;357:323-335.
- 31 Fauquier T, Rizzoti K, Dattani M et al. SOX2-expressing progenitor cells generate all of the major cell types in the adult mouse pituitary gland. *Proc Natl Acad Sci USA* 2008; 105:2907-2912.
- 32 Andoniadou CL, Gaston-Massuet C, Reddy R et al. Identification of novel pathways involved in the pathogenesis of human adamantinomatous craniopharyngioma. *Acta Neuropathol* 2012;124:259-271.
- 33 Yoshida S, Kato T, Yako H et al. Significant quantitative and qualitative transition in pituitary stem/progenitor cells occurs during the postnatal development of the rat anterior pituitary. *J Neuroendocrinol* 2011;23:933-943.
- 34 Andoniadou CL, Matsushima D, Mousavy Gharavy SN et al. Sox2(+) stem/progenitor cells in the adult mouse pituitary support organ homeostasis and have tumor-inducing potential. *Cell Stem Cell* 2013;13: 433-445.
- 35 Horiguchi K, Fujiwara K, Yoshida S et al. Isolation of dendritic-cell-like S100beta-positive cells in rat anterior pituitary gland. *Cell Tissue Res* 2014;357:301-308.
- 36 Devnath S, Inoue K. An insight to pituitary folliculo-stellate cells. *J Neuroendocrinol* 2008;20:687-691.
- 37 Asa SL, Tannenbaum GS. Cell-cell communication in the pituitary: Orchestrator of pulsatile growth hormone secretion? *Trends Endocrinol Metab* 2006;17:299-300.
- 38 Fauquier T, Guerineau NC, McKinney RA et al. Folliculostellate cell network: A route for long-distance communication in the anterior pituitary. *Proc Natl Acad Sci USA* 2001; 98:8891-8896.
- 39 Bilezikjian LM, Blount AL, Leal AM et al. Autocrine/paracrine regulation of pituitary function by activin, inhibin and follistatin. *Mol Cell Endocrinol* 2004;225:29-36.
- 40 Arzt E, Chesnokova V, Stalla GK et al. Pituitary adenoma growth: A model for cellular senescence and cytokine action. *Cell Cycle* 2009;8:677-678.
- 41 Renner U, Pagotto U, Arzt E et al. Autocrine and paracrine roles of polypeptide growth factors, cytokines and vasogenic substances in normal and tumorous pituitary function and growth: A review. *Eur J Endocrinol* 1996;135:515-532.
- 42 Deneff C. Paracrinicity: The story of 30 years of cellular pituitary crosstalk. *J Neuroendocrinol* 2008;20:1-70.
- 43 Mollard P, Hodson DJ, Lafont C et al. A tridimensional view of pituitary development and function. *Trends Endocrinol Metab* 2012; 23:261-269.
- 44 Chen M, Kato T, Higuchi M et al. Cox-sackievirus and adenovirus receptor-positive cells compose the putative stem/progenitor cell niches in the marginal cell layer and parenchyma of the rat anterior pituitary. *Cell Tissue Res* 2013;354:823-836.
- 45 Yoshida S, Kato T, Higuchi M et al. Localization of juxtacrine factor ephrin-B2 in pituitary stem/progenitor cell niches throughout life. *Cell Tissue Res* 2015;359:755-766.
- 46 Vankelecom H. Pituitary stem/progenitor cells: Embryonic players in the adult gland? *Eur J Neurosci* 2010;32:2063-2081.
- 47 Arnold K, Sarkar A, Yram MA et al. Sox2(+) adult stem and progenitor cells are important for tissue regeneration and survival of mice. *Cell Stem Cell* 2011;9:317-329.
- 48 Chen L, Ye H, Wang X et al. Evidence of brain tumor stem progenitor-like cells with low proliferative capacity in human benign pituitary adenoma. *Cancer Lett* 2014;349:61-66.
- 49 Xu Q, Yuan X, Tunici P et al. Isolation of tumour stem-like cells from benign tumours. *Br J Cancer* 2009;101:303-311.
- 50 Donangelo I, Ren SG, Eigler T et al. Sca1(+) murine pituitary adenoma cells show tumor-growth advantage. *Endocr Relat Cancer* 2014;21:203-216.
- 51 Mertens FM, Gremeaux L, Chen J et al. Pituitary tumors contain a side population with tumor stem cell-associated characteristics. *Endocr Relat Cancer* 2015;22:481-504.
- 52 Orciani M, Davis S, Appoloni G et al. Isolation and characterization of progenitor mesenchymal cells in human pituitary tumors. *Cancer Gene Ther* 2015;22:9-16.
- 53 van Rijn SJ, Tryfonidou MA, Hanson JM et al. Stem cells in the canine pituitary gland and in pituitary adenomas. *Vet Q* 2013;33: 217-224.
- 54 Yunoue S, Arita K, Kawano H et al. Identification of CD133+ cells in pituitary adenomas. *Neuroendocrinology* 2011;94:302-312.
- 55 Hosoyama T, Nishijo K, Garcia MM et al. A Postnatal Pax7 Progenitor Gives Rise to Pituitary Adenomas. *Genes Cancer* 2010;1: 388-402.
- 56 Challen GA, Little MH. A side order of stem cells: The SP phenotype. *Stem Cells* 2006;24:3-12.
- 57 Knoepfler PS. Deconstructing stem cell tumorigenicity: A roadmap to safe regenerative medicine. *Stem Cells* 2009;27:1050-1056.
- 58 Herberts CA, Kwa MS, Hermesen HP. Risk factors in the development of stem cell therapy. *J Transl Med* 2011;9:29.
- 59 Amariglio N, Hirshberg A, Scheithauer BW et al. Donor-derived brain tumor following neural stem cell transplantation in an ataxia telangiectasia patient. *PLoS Med* 2009; 6:e1000029.
- 60 Houghton J, Stoicov C, Nomura S et al. Gastric cancer originating from bone marrow-derived cells. *Science* 2004;306:1568-1571.
- 61 Li HC, Stoicov C, Rogers AB et al. Stem cells and cancer: Evidence for bone marrow stem cells in epithelial cancers. *World J Gastroenterol* 2006;12:363-371.
- 62 Werbowetski-Ogilvie TE, Bosse M, Stewart M et al. Characterization of human embryonic stem cells with features of neoplastic progression. *Nat Biotechnol* 2009;27: 91-97.
- 63 Illmensee K. Reversion of malignancy and normalized differentiation of teratocarcinoma cells in chimeric mice. *Basic Life Sci* 1978;12:3-25.
- 64 Martin GR. Teratocarcinomas and mammalian embryogenesis. *Science* 1980;209: 768-776.
- 65 Gafni O, Weinberger L, Mansour AA et al. Derivation of novel human ground state naive pluripotent stem cells. *Nature* 2013;504:282-286.
- 66 Caretti V, Sewing AC, Lagerweij T et al. Human pontine glioma cells can induce murine tumors. *Acta Neuropathol* 2014;127: 897-909.
- 67 Muller HL. Craniopharyngioma. *Endocr Rev* 2014;er20131115.
- 68 Muller HL. Paediatrics: Surgical strategy and quality of life in craniopharyngioma. *Nat Rev Endocrinol* 2013;9:447-449.
- 69 Buslei R, Nolde M, Hofmann B et al. Common mutations of beta-catenin in adamantinomatous craniopharyngiomas but not in other tumours originating from the sellar region. *Acta Neuropathol* 2005;109:589-597.
- 70 Martinez-Barbera JP. Molecular and cellular pathogenesis of adamantinomatous craniopharyngioma. *Neuropathol Appl Neurobiol*. doi: 10.1111/nan.12226.
- 71 Buslei R, Holsken A, Hofmann B et al. Nuclear beta-catenin accumulation associates with epithelial morphogenesis in craniopharyngiomas. *Acta Neuropathol* 2007;113:585-590.
- 72 Hofmann BM, Kreutzer J, Saeger W et al. Nuclear beta-catenin accumulation as reliable marker for the differentiation between cystic craniopharyngiomas and Rathke cleft cysts: A clinico-pathologic approach. *Am J Surg Pathol* 2006;30:1595-1603.
- 73 Gaston-Massuet C, Andoniadou CL, Signore M et al. Increased Wntless (Wnt) signaling in pituitary progenitor/stem cells gives rise to pituitary tumors in mice and humans. *Proc Natl Acad Sci USA* 2011;108: 11482-11487.
- 74 Holsken A, Stache C, Schläpfer SM et al. Adamantinomatous craniopharyngiomas express tumor stem cell markers in cells with activated Wnt signaling: Further evidence for the existence of a tumor stem cell niche? *Pituitary*.
- 75 Garcia-Lavandeira M, Saez C, Diaz-Rodriguez E et al. Craniopharyngiomas express embryonic stem cell markers (SOX2, OCT4, KLF4, and SOX9) as pituitary stem cells but do not coexpress RET/GFRA3 receptors. *J Clin Endocrinol Metab* 2012;97:E80-87.
- 76 Negoto T, Sakata K, Aoki T et al. Sequential pathological changes during malignant transformation of a craniopharyngioma: A case report and review of the literature. *Surg Neurol Int* 2015;6:50.
- 77 Gao S, Shi X, Wang Y et al. Malignant transformation of craniopharyngioma: Case report and review of the literature. *J Neurooncol* 2011;103:719-725.
- 78 Sofela AA, Hettige S, Curran O et al. Malignant transformation in craniopharyngiomas. *Neurosurgery* 2014;75:306-314.
- 79 Ishida M, Hotta M, Tsukamura A et al. Malignant transformation in craniopharyngioma after radiation therapy: A case report and review of the literature. *Clin Neuropathol* 2010;29:2-8.

- 80** Barker N, van Oudenaarden A, Clevers H. Identifying the stem cell of the intestinal crypt: Strategies and pitfalls. *Cell Stem Cell* 2012;11:452-460.
- 81** Arzt E, Pereda MP, Castro CP et al. Pathophysiological role of the cytokine network in the anterior pituitary gland. *Front Neuroendocrinol* 1999;20:71-95.
- 82** Graciarena M, Carbia-Nagashima A, Onofri C et al. Involvement of the gp130 cytokine transducer in MtT/S pituitary somatotroph tumour development in an autocrine-paracrine model. *Eur J Endocrinol* 2004;151:595-604.
- 83** Rosenthal A, Lindquist PB, Bringman TS et al. Expression in rat fibroblasts of a human transforming growth factor-alpha cDNA results in transformation. *Cell* 1986;46:301-309.
- 84** Uhrbom L, Hesselager G, Nister M et al. Induction of brain tumors in mice using a recombinant platelet-derived growth factor B-chain retrovirus. *Cancer Res* 1998;58:5275-5279.
- 85** Fomchenko EI, Dougherty JD, Helmy KY et al. Recruited cells can become transformed and overtake PDGF-induced murine gliomas in vivo during tumor progression. *PLoS One* 2011;6:e20605.
- 86** Rogelj S, Weinberg RA, Fanning P et al. Basic fibroblast growth factor fused to a signal peptide transforms cells. *Nature* 1988;331:173-175.
- 87** Aaronson SA. Growth factors and cancer. *Science* 1991;254:1146-1153.
- 88** Nicolas M, Wolfer A, Raj K et al. Notch1 functions as a tumor suppressor in mouse skin. *Nat Genet* 2003;33:416-421.
- 89** Deschene ER, Myung P, Rompolas P et al. beta-Catenin activation regulates tissue growth non-cell autonomously in the hair stem cell niche. *Science* 2014;343:1353-1356.
- 90** Arwert EN, Lal R, Quist S et al. Tumor formation initiated by nondividing epidermal cells via an inflammatory infiltrate. *Proc Natl Acad Sci USA* 2010;107:19903-19908.
- 91** Lujambio A, Akkari L, Simon J et al. Non-cell-autonomous tumor suppression by p53. *Cell* 2013;153:449-460.
- 92** Kode A, Manavalan JS, Mosialou I et al. Leukaemogenesis induced by an activating beta-catenin mutation in osteoblasts. *Nature* 2014;506:240-244.