



Published in final edited form as:

Am J Transplant. 2016 April ; 16(4): 1102–1112. doi:10.1111/ajt.13613.

CD57⁺ CD4 T cells underlie belatacept-resistant allograft rejection

Jaclyn Espinosa^{1,2}, Florence Herr³, Gregory Tharp⁴, Steven Bosinger⁴, Mingqing Song¹, Alton Brad Farris III⁵, Roshan George¹, Jennifer Cheeseman^{1,2}, Linda Stempora^{1,2}, Robert Townsend⁶, Antoine Durrbach^{3,7}, and Allan D. Kirk^{1,2}

¹Department of Surgery, Emory University, Atlanta, Georgia, USA

²Department of Surgery, Duke University, Durham, North Carolina, USA

³INSERM UMR1014, Villejuif, France

⁴Yerkes National Primate Research Center, Emory University, Atlanta, Georgia, USA

⁵Department of Pathology and Laboratory Medicine, Emory University, Atlanta, Georgia, USA

⁶Bristol-Myers Squibb, Princeton, New Jersey, USA

⁷Department of Nephrology, IFRNT, University of Kremlin Bicêtre, Le Kremlin Bicêtre, France

Abstract

Belatacept is a B7-specific fusion protein used to prevent allograft rejection by blocking T cell costimulation. Generally efficacious, it fails to prevent acute rejection in a sizable minority of patients. In experimental models, memory T cells mediate costimulation blockade-resistant rejection (CoBRR), but this remains undefined in humans. To explore relationships between individuals' immune cell phenotypes and CoBRR, we studied patients receiving belatacept or conventional calcineurin inhibitor-based immunosuppression. We identified a population of CD57⁺PD1⁻ CD4 T cells present prior to transplantation that correlated with CoBRR. Contrary to data recognizing CD57 as a marker of senescence on CD8 T cells, we discovered a non-senescent, cytolytic phenotype associated with CD57 on CD4 T cells. Moreover, CD57⁺ CD4 T cells: expressed high levels of adhesion molecules implicated in experimental CoBRR; were CD28 negative; expressed a transcriptional phenotype broadly defining allograft rejection; and were shown to be present in rejecting human kidney allografts. These data implicate CD57⁺ CD4 T cells in clinical CoBRR and if prospectively validated, this characteristic could identify patients at higher risk for acute rejection on belatacept-based therapy.

Correspondence should be addressed to Allan D. Kirk (allan.kirk@duke.edu).

Disclaimer

The research was carried out at the National Institute for Health Research (NIHR)/Wellcome Trust Birmingham Clinical Research Facility. The views expressed are those of the authors and not necessarily those of the National Health Service, the NIHR, or the Department of Health.

Disclosure

The authors of this manuscript have conflicts of interest to disclose as described by the *American Journal of Transplantation*. RT is employed by Bristol-Myers Squibb. The other authors have no conflicts of interest to disclose.

Supporting Information

Additional Supporting Information may be found in the online version of this article.

Introduction

Kidney transplantation is a standard, life-saving therapy, but organ survival necessitates the use of immunosuppressive drugs. These drugs render a transplant recipient immune compromised, the degree of which in large part determines the clinical risk of the procedure. As such, clinical immunosuppression has evolved through the development of increasingly targeted drug therapies to successfully manipulate the immune response toward an allograft without overly impairing the recipient's protective immune capacity. Following kidney transplantation most patients receive calcineurin inhibitors (CNIs; e.g. tacrolimus), which suppress T cell function through inhibition of a ubiquitous intracellular signaling pathway. This leads to very effective, non-specific, T cell immunosuppression and a substantial decrease in acute rejection rates that comes at the expense of impaired protective immunity, particularly to viruses and fungi (1–4); it also precipitates chronic CNI-associated non-immune nephrotoxic and metabolic side effects (5, 6). This dilemma has impelled the development of more specific, targeted therapeutics to prevent rejection without the complications observed with CNIs; the most prominent of which is belatacept.

Belatacept, a fusion protein targeting a specific extracellular costimulation pathway (the CD28-B7 receptor ligand pair), was developed as a potential replacement for CNIs. Belatacept binds to CD80 and CD86 with high affinity, preventing their binding to the critical T cell costimulatory receptor CD28; a mechanism now referred to as costimulation blockade (CoB)(7). TCR ligation in the absence of costimulation is generally ineffective in activating naïve, antigen-specific T cells, such that CoB substantially impairs *de novo* alloimmune responses. Antigen experienced T cells often have reduced requirements for costimulation, and thus, CoB can have a sustained inhibitory effect on new immune encounters without impairing previously established protective immunity.

Clinical trials evaluating the efficacy of belatacept-based immunosuppression demonstrated improved side effect profiles, graft function and patient and graft survival up to five years post transplant compared to patients receiving CNI-based immunosuppression(8–10). Unfortunately, patients treated with belatacept experienced more severe and higher rates of acute cellular rejection (ACR) compared to patients treated with CNIs(9, 10). This CoBRR has limited the clinical use of belatacept irrespective of its substantially reduced side-effect profile. Given the highly specific nature of belatacept's action, we sought to investigate whether the immune cell profile of an individual at the time of transplant, particularly the degree to which they have progressed from a naïve to antigen experienced cell phenotype, can be assessed to identify patients at risk for CoBRR. We find that a particular cell type, the CD57+ CD4 T cell, which is atypical in healthy adults but frequent in patients with kidney failure, is associated with belatacept-resistant rejection (BRR) and worthy of further study.

Materials and Methods

Sample acquisition

Kidney allograft recipients receiving belatacept or tacrolimus according to labeled indication were enrolled in an IRB-approved tissue acquisition protocol at the Emory Transplant Center. Collection and use of patient blood samples for laboratory analysis was approved by

the Institutional Review Board at Emory University (Approval No. IRB00006248). Written informed consent was received from participants prior to inclusion in each study. Peripheral blood mononuclear cells (PBMCs) were collected prior to transplantation and at multiple time points post-transplantation. Patients were followed clinically and segregated by outcome for analysis. For this study, we performed a retrospective analysis of stored patient samples. All belatacept-treated patients enrolled that had not received a prior transplant and had baseline samples available for analysis were included in this study. Within 7 months of transplantation, of the 14 patients receiving belatacept-based therapy, 9 patients experienced ACR and 5 were rejection-free. 10 tacrolimus-treated patients, 5 that experienced ACR and 5 that were rejection-free, were selected with similar demographics to the belatacept-treated patients for comparison. Patient demographics and additional supporting information may be found in the online version of this article.

Flow cytometry and intracellular cytokine staining

PBMCs obtained prior to drug administration were analyzed by flow cytometry to characterize the immune cell repertoire at baseline, interrogating for markers of memory, differentiation, activation, exhaustion and senescence. Antibodies were used against CD2 (BD #562300), CD3 (BD #557943), CD4 (BioLegend #317435), CD8 (eBioscience #47-00878-42), LFA1 (BD #563936), CD28 (BioLegend #302930), VLA4 (BioLegend #304314), CD57 (BD #555619) and PD1 (BioLegend #329906). Intracellular staining for Ki67 (BD #556026), granzyme B (BD #562462) was done using BD Biosciences Fixation/Permeabilization Solution Kit. Intracellular staining for IFN γ (BD #562392), and TNF α (BD #340534) was done following a four-hour stimulation with phorbol 12-myristate 13-acetate (PMA) and ionomycin in the presence of brefeldin A (Sigma-Aldrich). All samples were run using a BD Biosciences LSRFortessa and analyzed using FlowJo software (Treestar).

PCR

Analysis of patient telomere length was performed on QuantStudio (Life Technologies) with iTaq Sybr (Biorad). Reference DNA was generated by the combination of five healthy controls and used to produce a standard curve to determine relative telomere/single copy gene ratio (11, 12).

Microarray

Peripheral blood obtained from 5 healthy controls was processed and sorted on a BD FACSAria cell sorter into CD3+CD4+CD8-CD57+PD1- and CD3+CD4+CD8-CD57-PD1- populations. Antibodies were used against CD3 (BD #560366), CD4 (BD #557852), CD8 (eBioscience #47-0088-42), CD57 (BD #555619) and PD1 (BioLegend #329906). Total RNA was extracted from the sorted populations and quality assessed. cDNA synthesis and amplification was performed, and fragmented and biotinylated samples were hybridized to the Affymetrix Human U133 plus 2.0 probe array. The arrays were scanned and probe intensity measurements were normalized across the samples using the robust multichip average (RMA) algorithm. GEO accession GSE64805.

Immunohistochemistry

Kidney allograft biopsies were obtained per protocol time point or suspected rejection. 36 biopsies were dual stained for anti-CD57 (DAKO, Carpinteria, CA) and anti-CD4 (DAKO, Carpinteria, CA). Blinded analysis was performed to determine cell density and localization.

Allogeneic mixed lymphocyte reaction

PBMCs were obtained by cytophoresis of healthy volunteers who gave their informed written consent. PBMCs were isolated by Ficoll Paque density-gradient centrifugation (GE Healthcare), monocytes and lymphocytes were isolated by positive CD14 or CD3 selection (Miltenyi Biotec, purity > 95%). Monocytes were then plated and cultured as previously described with 25 ng/ml recombinant human IL-4 (hIL-4; ImmunoTools) and 1000 IU/ml recombinant human granulocyte-macrophage colony stimulating factor (rhGM-CSF; Peprotech). At day 6, immature DCs were characterized by staining for CD14 and CD209 and stimulated for an additional 48 hr with lipopolysaccharide (LPS; 50 ng/ml, Sigma-aldrich) (activated DC). For proliferation assay, lymphocytes were stained with 1 μ M Violet Proliferation Dye 450 (VPD450; BD Biosciences) in DPBS for 10 min at 37°C and washed 2 times in complete medium and added to activated allogeneic DC (DC/CD3⁺ T cells ratio : 1:3) with or without belatacept (25 μ g/ml). After 7 days of co-culture, VPD450 dilution and phenotype were analyzed by FACS. Antibodies were purchased from BD Biosciences (V450-labeled anti-CD14, APC-labeled anti-CD209, APC-Cy7-labeled anti-CD3, BUV395-labeled anti-CD4, PerCP-Cy5.5-labeled anti-CD8, BV605-labeled anti-CCR7, PE-labeled anti-CD57, APC-labeled anti-27, PE-Cy7-labeled anti-CD38) or from Miltenyi Biotec (FITC-labeled anti-CD45RO). Flow cytometry data were recorded with an LSR Fortessa cell analyser (BD Biosciences) and analyzed with Diva software (BD Biosciences).

Statistics

Differences in percentage of CD57+PD1⁻ CD4 T cells were calculated using Mann-Whitney test due to the bimodal distribution of this cell subset. For additional flow cytometry analyses, *P* values were calculated using unpaired *t* tests, linear regressions and one-way and two-way ANOVA, and *r* values were computed using Pearson correlation coefficients. For the microarray, a paired *t* test was employed on the normalized expression values to find differentially expressed genes in CD57+ compared to CD57⁻ cells. For immunohistochemistry, significant differences between stable and rejection outcomes were calculated using an unpaired *t* test. *P* values of less than 0.05 were considered statistically significant.

Results

High prevalence of CD57+PD1⁻ CD4 T cells in peripheral blood prior to transplant is associated with belatacept-resistant rejection

It is known that the activation of antigen-experienced T cells is less costimulation-dependent relative to that of naïve cells(13, 14), and molecules associated with antigen experience have been related to CoBRR(15–17). We therefore explored pre-transplant expression of surface markers indicative of antigen experience and terminal differentiation, specifically PD1 and

CD57. PD1 is upregulated following activation and maintains expression on exhausted T cells(18, 19), and CD57 is a carbohydrate epitope present on replicative senescent cells(20–23). While this has been well described in the context of CD8 T cells(24, 25) our study identified a population of CD4 T cells in the peripheral blood of transplant patients receiving belatacept-based immunosuppression that were CD57+PD1– and correlated with BRR, regardless of memory status (Figure 1B). No significant differences in outcome were observed in any subset of PD1 or CD57 expressing CD8 T cells (Figure 1C).

To distinguish whether this was specific to BRR, or characteristic of rejection in general, we studied patients treated with conventional tacrolimus-based immunosuppression. Using the same parameters, no significant difference between outcome and the expression of CD57 or PD1 was elucidated in CD4 or CD8 T cells (Figure 1D, E). These data demonstrate that CD57 expression on CD4 T cells in peripheral blood prior to transplant associates with rejection specifically in belatacept-treated patients. We found this population of cells to be rare in healthy controls, but significantly increased in patients with kidney failure (Figure 2), increasing its unique relevance to kidney transplantation.

CD57+ CD4 T cells are not senescent by traditional indices

CD57 has been described as a marker of immune cell senescence, a phenotype that would be unlikely to segregate with an active process like allograft rejection. Therefore, we employed independent assays to ascertain whether this was true in our cell population of interest. First we performed PCR analysis of relative telomere length in the same patient cohort described above. Terminally differentiated cells that have undergone multiple divisions have shortened telomeres (26), which should correlate with increased CD57 expression. In the patients treated with belatacept, expression of CD57 on CD4 T cells did not correlate with relative telomere length (Figure 3A). This lack of correlation indicated a possible non-traditional role of CD57 on CD4 T cells. Secondly, we looked at expression of Ki67, a protein strictly associated with cell proliferation (27). Increased expression of CD57 on CD4 T cells in belatacept-treated patients significantly correlated with increased Ki67 expression ($p < 0.01$) (Figure 3B), also inconsistent with cell senescence. The non-senescent phenotype of CD57+ CD4 T cells in this setting contradicts the paradigm of CD57 expression and senescence.

The gene profile of CD57+PD1– CD4 T cells is highly associated with allograft rejection

To gain insight into the function of CD57+PD1– CD4 T cells, we performed a microarray to examine their gene expression profile. PBMCs from healthy controls were sorted into CD57+PD1– and CD57–PD1– CD4 T cells and analyzed by microarray. A heat map of normalized gene expression revealed a distinct transcriptome associated with CD57+ compared to CD57– CD4 T cells (Figure 4A). The most upregulated genes were indicative of a highly cytotoxic profile and included molecules involved in activation, adhesion, cell trafficking and cytotoxicity. We then imported the gene expression profiles into an independent Ingenuity Pathway Analysis (IPA), an unsupervised analysis of over 600 biological pathways. IPA remarkably deemed ‘Allograft Rejection Signaling’ the most closely associated signaling pathway with the genes upregulated in CD57+ CD4 T cells (Figure 4B).

CD57+ cells have increased expression of adhesion molecules

Adhesion molecules, such as CD2 and LFA1, have also been implicated in CoBRR. Indeed, their selective elimination has been shown to substantially reduce the risk of CoBRR in animal models(15–17, 28). To evaluate the relationship between expression of CD57 and CD2, LFA1, and VLA4, we performed additional phenotyping on baseline PBMCs from transplant patients. CD2^{hi}CD4 T cells were shown to express high levels of LFA1 and VLA4, with CD57 present on cells that expressed high levels of these adhesion molecules (Figure 5A). Importantly, while all CD57+ cells expressed high levels of CD2, LFA1 and VLA4, the converse was not true, such that CD57 was a unifying marker of increased adhesion molecule expression (Figure 5B). These results suggested that CD57+PD1– CD4 T cells may not only serve as a marker of rejection risk in the periphery, but may play an active role in mediating rejection, prompting us to determine whether these cells were present in rejecting allografts.

There is an increased density of CD57+ T cells in rejecting kidney allografts

Clinical kidney allograft biopsies obtained either for protocol surveillance or at the time of suspected rejection and were dual stained for CD4 and CD57 (Figure 6A). CD57+ CD4 T cells were present in rejecting kidney allografts at a higher density compared to stable kidney allografts (Figure 6B). In fact, patients with a higher percentage of circulating CD57+PD1– CD4 T cells prior to transplantation also had an increased density of CD57+ CD4 T cells in rejecting allografts. Thus, this population of cells is not only present in the peripheral blood, but they are capable of infiltrating the graft, likely due to the increased expression of adhesion molecules.

CD57+ CD4 T cells are CD28– and exhibit cytolytic properties

Multiple groups have shown that CD28 loss is associated with CoBRR(29, 30), but loss of CD28 did not statistically associate with BRR in our study. While we found an inverse correlation between CD57 and CD28 expression (Figure 7A), not all CD28– cells were CD57+ (Figure 7B). *In vitro* studies revealed that CD57+PD1– CD4 T cells are almost exclusively polyfunctional, producing both IFN γ and TNF α following stimulation with PMA and ionomycin (Figure 7C), while CD28-PD1–CD4 T cells were largely incapable of producing either IFN γ or TNF α (Figure 7D). Furthermore, all CD57+ CD4 T cells expressed high levels of Granzyme B compared to CD57– CD4 T cells, which express low levels of Granzyme B (Figure 7E). As such, while loss of CD28 perhaps identified cells indifferent to CD28-B7 blockade by belatacept, CD57 expression identified those CD28 negative cells capable of actively mediating BRR.

CD57+ CD4 T cells are resistant to the immunosuppressive effects of belatacept

To determine whether CD57+ CD4 T cells are indeed resistant to the immunosuppressive effects of belatacept, CD3 T cells from healthy volunteers were labeled with Violet Proliferative Dye 450 and co-cultured with activated allogeneic dendritic cells (DCs). After 7 days in culture in the presence or absence of belatacept, cell subset proliferation was assessed by flow cytometry. Both CD57+ and CD57– CD4 T cells were able to proliferate in response to activated DCs in the absence of belatacept (Figure 8A). While proliferation of

CD57⁻ CD4 T cells was significantly inhibited in the presence of belatacept, proliferation of CD57⁺ CD4 T cells remained uninhibited (Figure 8B, C), confirming that CD57⁺ CD4 T cells are activated in a costimulation independent fashion.

Discussion

The search for a suitable alternative to CNI-based immunosuppression has become increasingly relevant as long term outcomes and toxicities have gained prominence in clinical transplantation. Early results with belatacept, though encouraging with regard to graft function and off-target side effects, have been disappointing with regard to the ability to prevent early acute rejection. This has impelled an explicit look for mechanistic correlates of belatacept resistance and in particular a means of risk stratification for patients to guide immunosuppressive regimen choice. We chose to investigate variability in cell surface phenotype recognizing that individuals' lymphocyte repertoire evolves considerably over time as a result of environmental pathogen exposure and that these changes markedly alter cells' costimulation requirements including, but not limited to, expression of and dependence on CD28 (31–34). These characteristics have experimentally been shown to mollify the efficacy of CoB-based regimens. In this series of experiments, we show this to be potentially relevant to humans, and characterize a particular cell type that is prevalent in renal failure patients, the CD57⁺PD1⁻ CD4 T cell, the presence of which correlates with the risk of CoBRR, is present within rejecting allografts, and whose characteristics relate to the known mechanisms of cellular allograft rejection and costimulation resistance. It is important to note that there are several mechanisms of allograft rejection and the prevalence of CD57⁺PD1⁻ CD4 T cells demonstrates a potential additional, and not exclusive, mechanism of CoBRR to be aware of in this population.

Although CD57⁺ CD4 T cells have previously been associated with cell senescence in HIV infected patients (23, 35), we have demonstrated that CD57 is a unique, unifying marker of human CD4 T cells that are enriched in patients with kidney failure and have a cytolytic profile characterized by high levels of adhesion molecules previously implicated in CoBRR. CD57⁺CD4 T cells are capable of infiltrating allografts and producing multiple cytokines upon stimulation. In this context, CD57 appears not to be a marker of senescence, but rather a potential surrogate indicator of patients' immune history as it relates to BRR. This population is consistent with that described previously as being prevalent in the kidney transplant population(36). Their enrichment in patients with renal failure is an additional novel observation of these studies, the mechanism of which deserves further study. Similarly, additional studies are necessary to completely define the mechanism by which these cells mediate CoBRR. Nevertheless, their association with and proximity to rejecting kidneys is clearly demonstrated in our studies.

CD57⁺ CD4 T cells have been previously described in the context of transplantation. Legendre, et al described a higher percentage of CD57⁺ (then, Leu7⁺) CD4 T cells in patients that experienced rejection compared to stable patients(36). This study, predating the tacrolimus era, combined with studies reported herein, strongly implicates this cell type as worthy of attention. Collectively, these data support the finding that CD57⁺ CD4 T cells play a role in allograft rejection, particularly in the absence of CNIs, and that prospective

assessment of this population could be used to identify patients at particular risk for ACR, especially in costimulation blockade-based regimens.

Graft survival rates have improved in the past 20 years largely due to the development of targeted immunosuppressant drugs. Traditional immunosuppression management consists of universalized algorithms of serum drug levels and dosing regimens that are generally applied to transplant populations. With increasingly specific forms of immune manipulation, the opportunity for more personalized immune management becomes more evident and indeed, may become increasingly required. This is particularly true when selectively targeting a molecule that progressively diminishes in expression over a lifetime of immune perturbation. Though the increased risk of rejection associated with belatacept-based immunosuppression has proved a significant challenge for its clinical implementation, CD57+PD1⁻ CD4 T cells represent a potential therapeutic target, as well as a practical screening tool to identify patients at higher risk for acute cellular rejection on belatacept-based therapy. The ability to clearly and accurately define markers of risk of rejection will help tailor immunosuppression therapies on an individual basis.

We acknowledge that these studies have been performed on a small group of patients, albeit one that has been very carefully monitored and controlled. Clinical intolerance for high rejection rates has prevented us from expanding the clinical cohort substantially. As our clinical goal has been to provide adjuvant therapies to mitigate BRR, expanding this cohort has not been feasible. Additional studies are necessary to elucidate associations between CD57 and other costimulation molecules to potentially target and inhibit the activation of CD57+ CD4 T cells, as well as phenotype these cells following transplantation. Nevertheless, we believe these observations to be sufficiently statistically supported and mechanistically plausible to warrant their reporting and to stimulate further study.

In summary, we find that expression of CD57 identifies a population of polyfunctional CD28 negative cells with cytolytic potential. While CD28 loss is intuitively necessary, it does not appear to be sufficient for BRR. Thus, CD28 loss may define belatacept indifference, but CD57 expression appears to identify cells mediating belatacept resistance. Importantly, this phenotype is present in the peripheral blood of patients awaiting transplant and assessing the prevalence of CD57+PD1⁻ CD4 T cells prior to transplantation may identify patients not suited for belatacept-based therapy.

Supplementary Material

Refer to Web version on PubMed Central for supplementary material.

Acknowledgments

The authors wish to acknowledge the Emory Transplant Center Biorepository for their help with sample acquisition. This research was supported by a grant from Bristol-Myers Squibb and the National Institute of Allergy and Infectious Disease R01 A1097423 (ADK).

Abbreviations

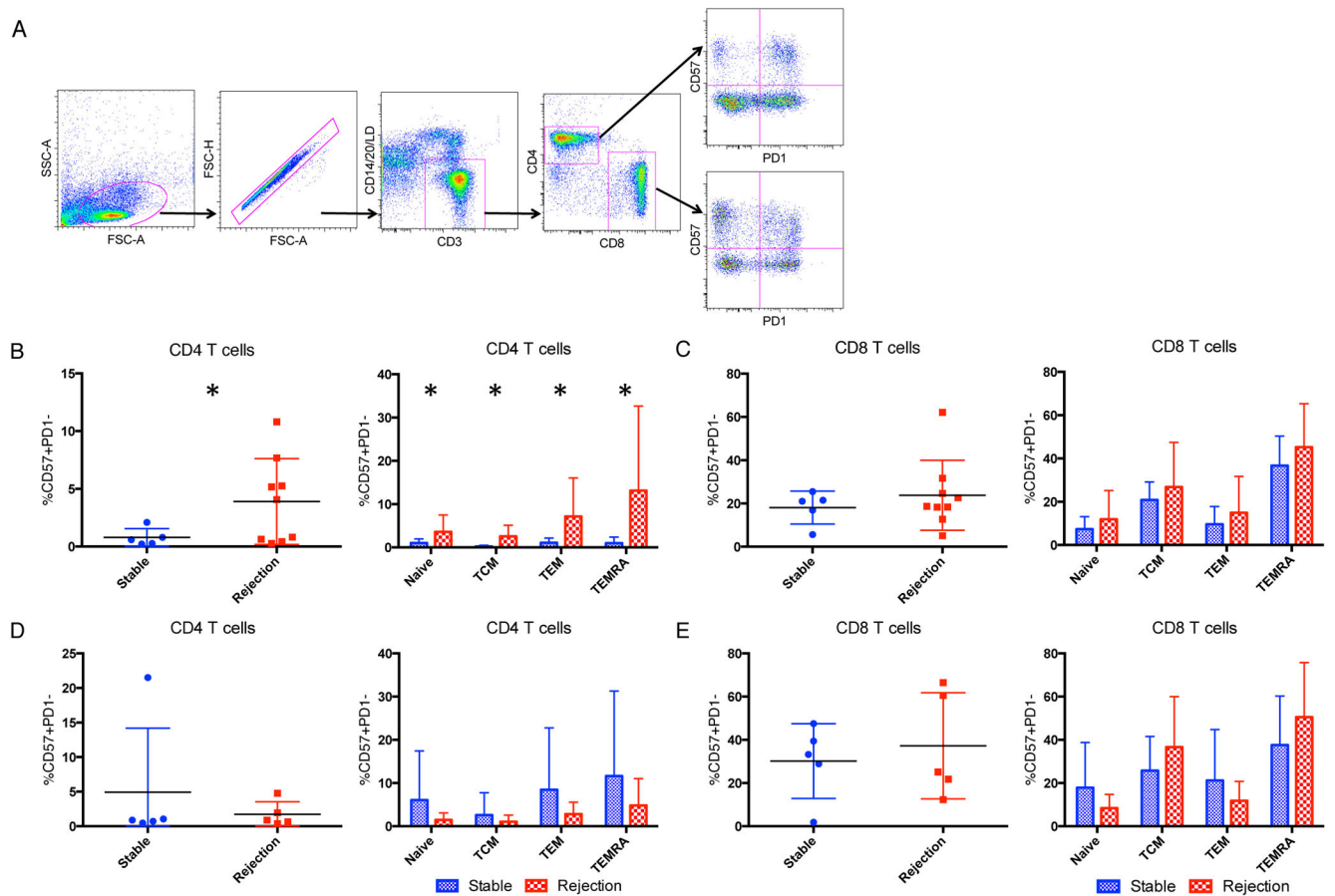
| | |
|--------------|--|
| ACR | acute cellular rejection |
| BRR | belatacept-resistant rejection |
| CNIs | calcineurin inhibitors |
| CoB | costimulation blockade |
| CoBRR | costimulation blockade-resistant rejection |
| IPA | ingenuity pathway analysis |
| PBMCs | peripheral blood mononuclear cells |
| PMA | phorbol 12-myristate 13-acetate |

References

1. Rooney CM, Smith CA, Ng CY, Loftin SK, Sixbey JW, Gan Y, et al. Infusion of cytotoxic T cells for the prevention and treatment of Epstein-Barr virus-induced lymphoma in allogeneic transplant recipients. *Blood*. 1998; 92(5):1549–55. [PubMed: 9716582]
2. Heslop HE, Slobod KS, Pule MA, Hale GA, Rousseau A, Smith CA, et al. Long-term outcome of EBV-specific T-cell infusions to prevent or treat EBV-related lymphoproliferative disease in transplant recipients. *Blood*. 2010; 115(5):925–35. [PubMed: 19880495]
3. Fisher RA. Cytomegalovirus infection and disease in the new era of immunosuppression following solid organ transplantation. *Transplant infectious disease : an official journal of the Transplantation Society*. 2009; 11(3):195–202. [PubMed: 19228345]
4. Xu H, Perez SD, Cheeseman J, Mehta AK, Kirk AD. The allo- and viral-specific immunosuppressive effect of belatacept, but not tacrolimus, attenuates with progressive T cell maturation. *American journal of transplantation : official journal of the American Society of Transplantation and the American Society of Transplant Surgeons*. 2014; 14(2):319–32.
5. Randhawa PS, Shapiro R, Jordan ML, Starzl TE, Demetris AJ. The histopathological changes associated with allograft rejection and drug toxicity in renal transplant recipients maintained on FK506. Clinical significance and comparison with cyclosporine. *The American journal of surgical pathology*. 1993; 17(1):60–8. [PubMed: 7680544]
6. Naesens M, Kuypers DR, Sarwal M. Calcineurin inhibitor nephrotoxicity. *Clinical journal of the American Society of Nephrology : CJASN*. 2009; 4(2):481–508. [PubMed: 19218475]
7. Larsen CP, Knechtle SJ, Adams A, Pearson T, Kirk AD. A new look at blockade of T-cell costimulation: a therapeutic strategy for long-term maintenance immunosuppression. *American journal of transplantation : official journal of the American Society of Transplantation and the American Society of Transplant Surgeons*. 2006; 6(5 Pt 1):876–83.
8. Vincenti F, Charpentier B, Vanrenterghem Y, Rostaing L, Bresnahan B, Darji P, et al. A phase III study of belatacept-based immunosuppression regimens versus cyclosporine in renal transplant recipients (BENEFIT study). *American journal of transplantation : official journal of the American Society of Transplantation and the American Society of Transplant Surgeons*. 2010; 10(3):535–46.
9. Vincenti F, Larsen CP, Alberu J, Bresnahan B, Garcia VD, Kothari J, et al. Three-year outcomes from BENEFIT, a randomized, active-controlled, parallel-group study in adult kidney transplant recipients. *American journal of transplantation : official journal of the American Society of Transplantation and the American Society of Transplant Surgeons*. 2012; 12(1):210–7.
10. Rostaing L, Vincenti F, Grinyo J, Rice KM, Bresnahan B, Steinberg S, et al. Long-term belatacept exposure maintains efficacy and safety at 5 years: results from the long-term extension of the BENEFIT study. *American journal of transplantation : official journal of the American Society of Transplantation and the American Society of Transplant Surgeons*. 2013; 13(11):2875–83.

11. O'Callaghan N, Dhillon V, Thomas P, Fenech M. A quantitative real-time PCR method for absolute telomere length. *BioTechniques*. 2008; 44(6):807–9. [PubMed: 18476834]
12. Cawthon RM. Telomere length measurement by a novel monochrome multiplex quantitative PCR method. *Nucleic acids research*. 2009; 37(3):e21. [PubMed: 19129229]
13. Hamann D, Baars PA, Rep MH, Hooibrink B, Kerkhof-Garde SR, Klein MR, et al. Phenotypic and functional separation of memory and effector human CD8+ T cells. *The Journal of experimental medicine*. 1997; 186(9):1407–18. [PubMed: 9348298]
14. Byrne JA, Butler JL, Cooper MD. Differential activation requirements for virgin and memory T cells. *Journal of immunology (Baltimore, Md : 1950)*. 1988; 141(10):3249–57.
15. Weaver TA, Charafeddine AH, Agarwal A, Turner AP, Russell M, Leopardi FV, et al. Alefacept promotes co-stimulation blockade based allograft survival in nonhuman primates. *Nature medicine*. 2009; 15(7):746–9.
16. Lo DJ, Weaver TA, Stempora L, Mehta AK, Ford ML, Larsen CP, et al. Selective targeting of human alloresponsive CD8+ effector memory T cells based on CD2 expression. *American journal of transplantation : official journal of the American Society of Transplantation and the American Society of Transplant Surgeons*. 2011; 11(1):22–33.
17. Kitchens WH, Haridas D, Wagener ME, Song M, Ford ML. Combined costimulatory and leukocyte functional antigen-1 blockade prevents transplant rejection mediated by heterologous immune memory alloresponses. *Transplantation*. 2012; 93(10):997–1005. [PubMed: 22475765]
18. Wherry EJ. T cell exhaustion. *Nature immunology*. 2011; 12(6):492–9. [PubMed: 21739672]
19. Jin HT, Ahmed R, Okazaki T. Role of PD-1 in regulating T-cell immunity. *Current topics in microbiology and immunology*. 2011; 350:17–37. [PubMed: 21061197]
20. Brenchley JM, Karandikar NJ, Betts MR, Ambrozak DR, Hill BJ, Crotty LE, et al. Expression of CD57 defines replicative senescence and antigen-induced apoptotic death of CD8+ T cells. *Blood*. 2003; 101(7):2711–20. [PubMed: 12433688]
21. Papagno L, Spina CA, Marchant A, Salio M, Rufer N, Little S, et al. Immune activation and CD8+ T-cell differentiation towards senescence in HIV-1 infection. *PLoS biology*. 2004; 2(2):E20. [PubMed: 14966528]
22. Morita I, Kizuka Y, Kakuda S, Oka S. Expression and function of the HNK-1 carbohydrate. *Journal of biochemistry*. 2008; 143(6):719–24. [PubMed: 18024472]
23. Palmer BE, Blyveis N, Fontenot AP, Wilson CC. Functional and phenotypic characterization of CD57+CD4+ T cells and their association with HIV-1-induced T cell dysfunction. *Journal of immunology (Baltimore, Md : 1950)*. 2005; 175(12):8415–23.
24. Strioga M, Pasukoniene V, Characiejus D. CD8+ CD28– and CD8+ CD57+ T cells and their role in health and disease. *Immunology*. 2011; 134(1):17–32. [PubMed: 21711350]
25. Focosi D, Bestagno M, Burrone O, Petrini M. CD57+ T lymphocytes and functional immune deficiency. *Journal of leukocyte biology*. 2010; 87(1):107–16. [PubMed: 19880576]
26. Pooley KA, Sandhu MS, Tyrer J, Shah M, Driver KE, Luben RN, et al. Telomere length in prospective and retrospective cancer case-control studies. *Cancer research*. 2010; 70(8):3170–6. [PubMed: 20395204]
27. Scholzen T, Gerdes J. The Ki-67 protein: from the known and the unknown. *Journal of cellular physiology*. 2000; 182(3):311–22. [PubMed: 10653597]
28. Badell IR, Russell MC, Thompson PW, Turner AP, Weaver TA, Robertson JM, et al. LFA-1-specific therapy prolongs allograft survival in rhesus macaques. *The Journal of clinical investigation*. 2010; 120(12):4520–31. [PubMed: 21099108]
29. Traitanon O, Gorbachev A, Bechtel JJ, Keslar KS, Baldwin WM 3rd, Poggio ED, et al. IL-15 induces alloreactive CD28(–) memory CD8 T cell proliferation and CTLA4-Ig resistant memory CD8 T cell activation. *American journal of transplantation : official journal of the American Society of Transplantation and the American Society of Transplant Surgeons*. 2014; 14(6):1277–89.
30. Mou D, Espinosa JE, Stempora L, Iwakoshi NN, Kirk AD. Viral-induced CD28 loss evokes costimulation independent alloimmunity. *The Journal of surgical research*. 2015; 196(2):241–6. [PubMed: 25801976]

31. Sayegh MH, Turka LA. The role of T-cell costimulatory activation pathways in transplant rejection. *The New England journal of medicine*. 1998; 338(25):1813–21. [PubMed: 9632449]
32. Ford ML, Adams AB, Pearson TC. Targeting co-stimulatory pathways: transplantation and autoimmunity. *Nature reviews Nephrology*. 2014; 10(1):14–24. [PubMed: 24100403]
33. Gourley TS, Wherry EJ, Masopust D, Ahmed R. Generation and maintenance of immunological memory. *Seminars in immunology*. 2004; 16(5):323–33. [PubMed: 15528077]
34. Ahmed R, Gray D. Immunological memory and protective immunity: understanding their relation. *Science (New York, NY)*. 1996; 272(5258):54–60.
35. Fernandez S, French MA, Price P. Immunosenescent CD57+CD4+ T-cells accumulate and contribute to interferon-gamma responses in HIV patients responding stably to ART. *Disease markers*. 2011; 31(6):337–42. [PubMed: 22182806]
36. Legendre CM, Guttman RD, Hou SK, Jean R. Two-color immunofluorescence and flow cytometry analysis of lymphocytes in long-term renal allotransplant recipients: identification of a major Leu-7+/Leu-3+ subpopulation. *Journal of immunology (Baltimore, Md : 1950)*. 1985; 135(2):1061–6.



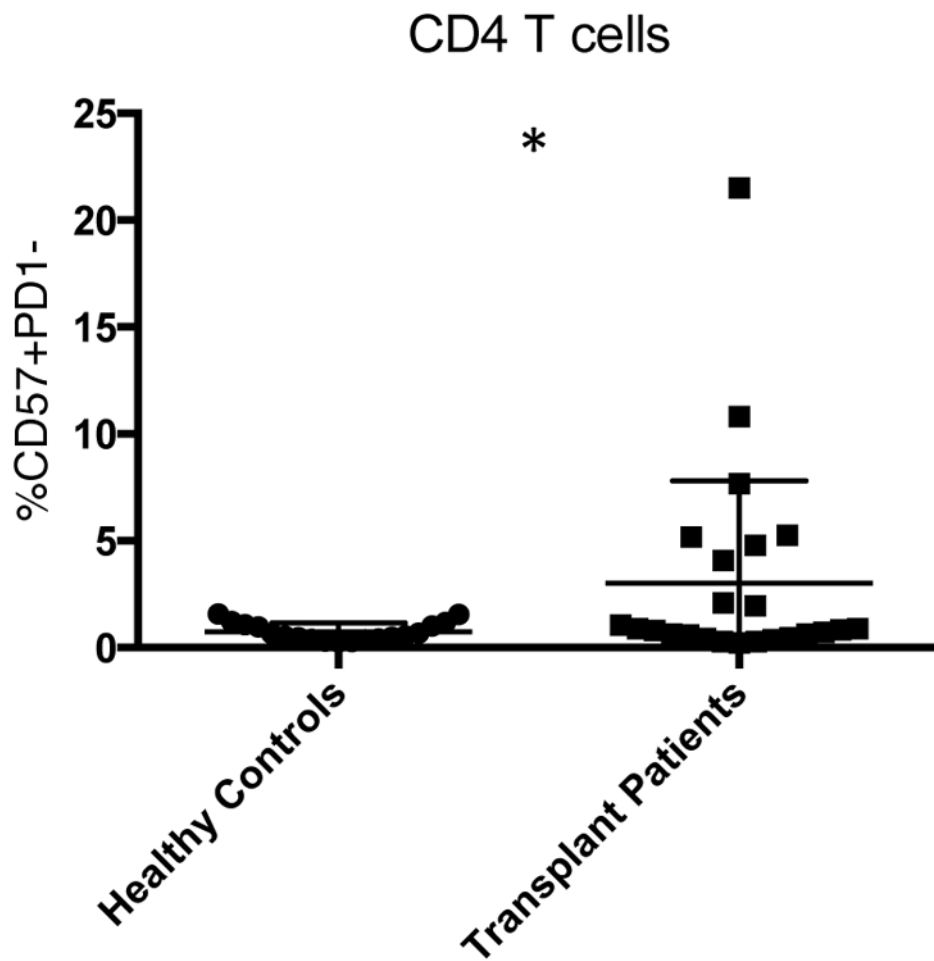


Figure 2. CD57+PD1- CD4 T cells are atypical in healthy controls

The frequency of CD57+PD1- CD4 T cells is significantly increased in PBMCs of patients with kidney failure awaiting transplant compared to PBMCs of healthy controls ($p < 0.05$), highlighting their unique relevance to kidney transplantation. PBMC, peripheral blood mononuclear cell.

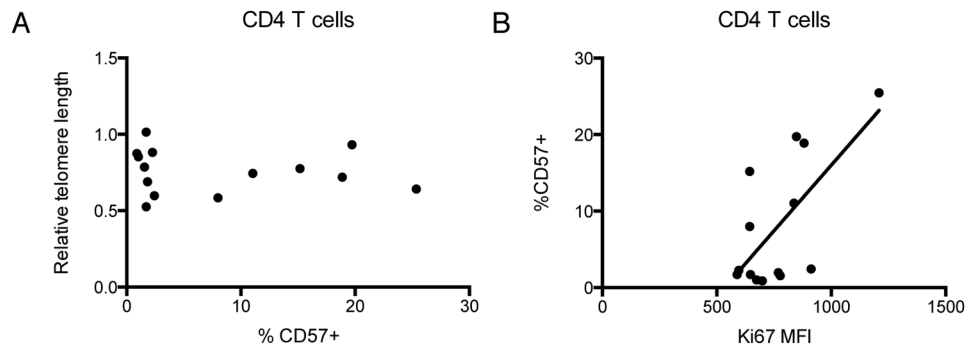


Figure 3. CD57+ CD4 T Cells are not senescent based on traditional indices

(A) Relative telomere length of belatacept-treated patients was determined by PCR and did not correlate with CD57 expression on CD4 T cells in the same belatacept-treated patients. (B) Ki67 expression significantly correlated with increased expression of CD57 on CD4 T cells in belatacept-treated patients ($p < 0.01$, $r = 0.6704$).

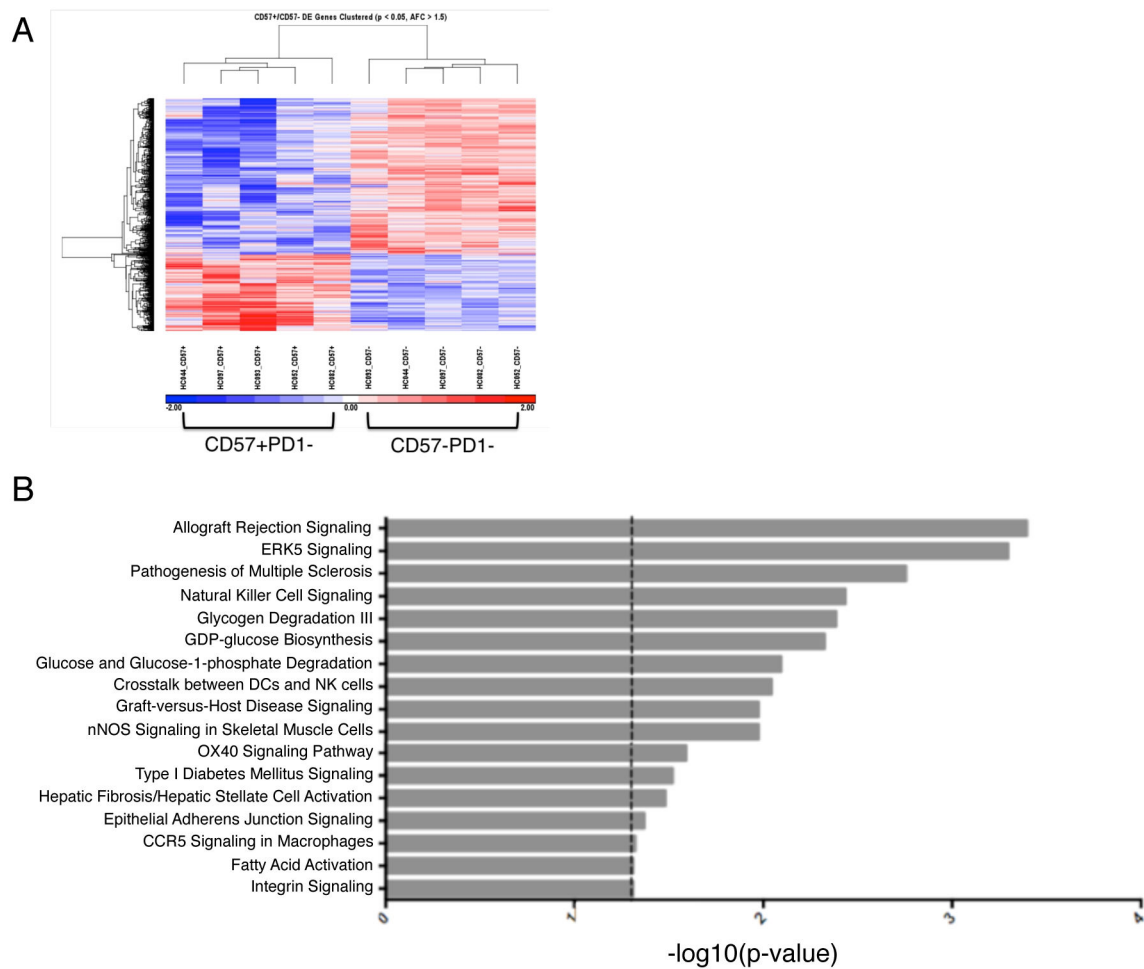


Figure 4. Genes Involved in Allograft Rejection are upregulated in CD57+ CD4 T cells
 (A) PBMCs from healthy controls (n=5) were sorted into CD57+PD1- and CD57-PD1- CD4 T cells. RNA was extracted, cDNA synthesis and amplification was performed and samples were hybridized to the Affymetrix Human U133 plus 2.0 probe array. Clear segregation of gene expression was observed in CD57 positive compared to CD57 negative CD4 T cells. (B) Ingenuity pathway analysis deemed ‘Allograft Rejection Signaling’ the most closely associated signaling pathway with the genes upregulated in CD57+ compared to CD57-CD4 T cells. PBMC, peripheral blood mononuclear cell.

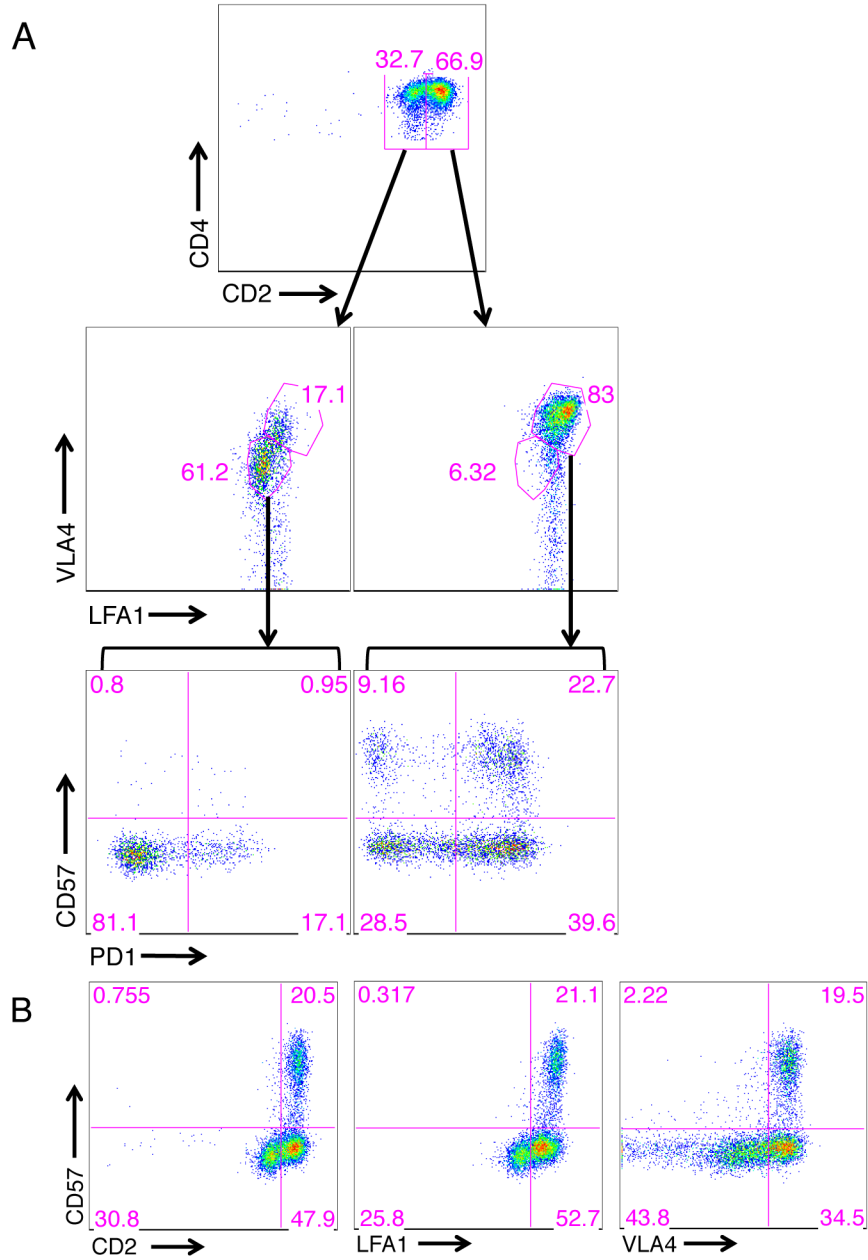


Figure 5. CD57 is present on cells with increased expression of other adhesion molecules implicated in CoBRR
 (A) Representative flow cytometry plots of PBMCs from patients prior to transplantation demonstrate demonstrating CD2hi CD4 T cells also express high levels of adhesion molecules LFA1 and VLA4, whereas CD2lo CD4 T cells express low levels of LFA1 and VLA4. CD57+ CD4 T cells are found exclusively in the CD2hi LFA1hi VLA4hi subset. (B) Representative flow cytometry plots of PBMCs from the same patients prior to transplantation validate that all CD57+ CD4 T cells express high levels of CD2, LFA1 and VLA4. CoBRR, costimulation blockade-resistant rejection.

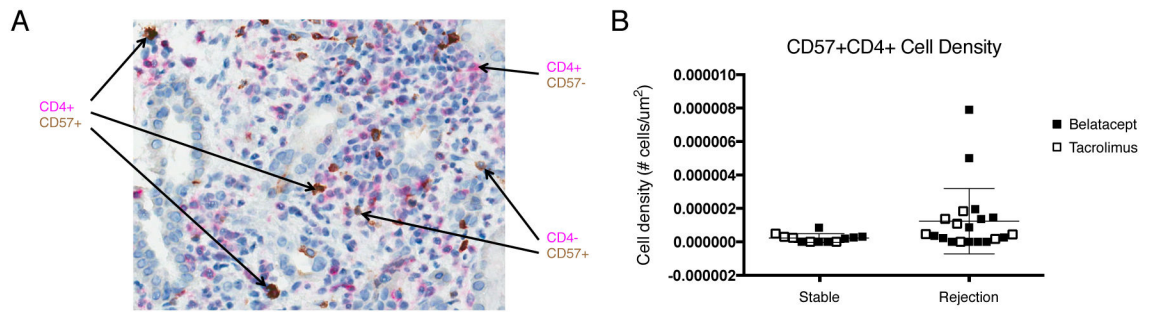


Figure 6. Increased density of CD57+ T cells in rejecting allografts

(A) A representative kidney allograft biopsy dual stained to show CD4 (in pink) and CD57 (in brown) expression demonstrates that CD57+ CD4 T cells are able to infiltrate kidney allografts. (B) Summary data of all biopsies from patients treated with belatacept (closed squares) and patients treated with tacrolimus (open squares) demonstrate the density of CD57+ CD4 T cells in kidney biopsies collected at the time of rejection is greater compared to patient biopsies obtained at a stable protocol time point ($p=0.08$).

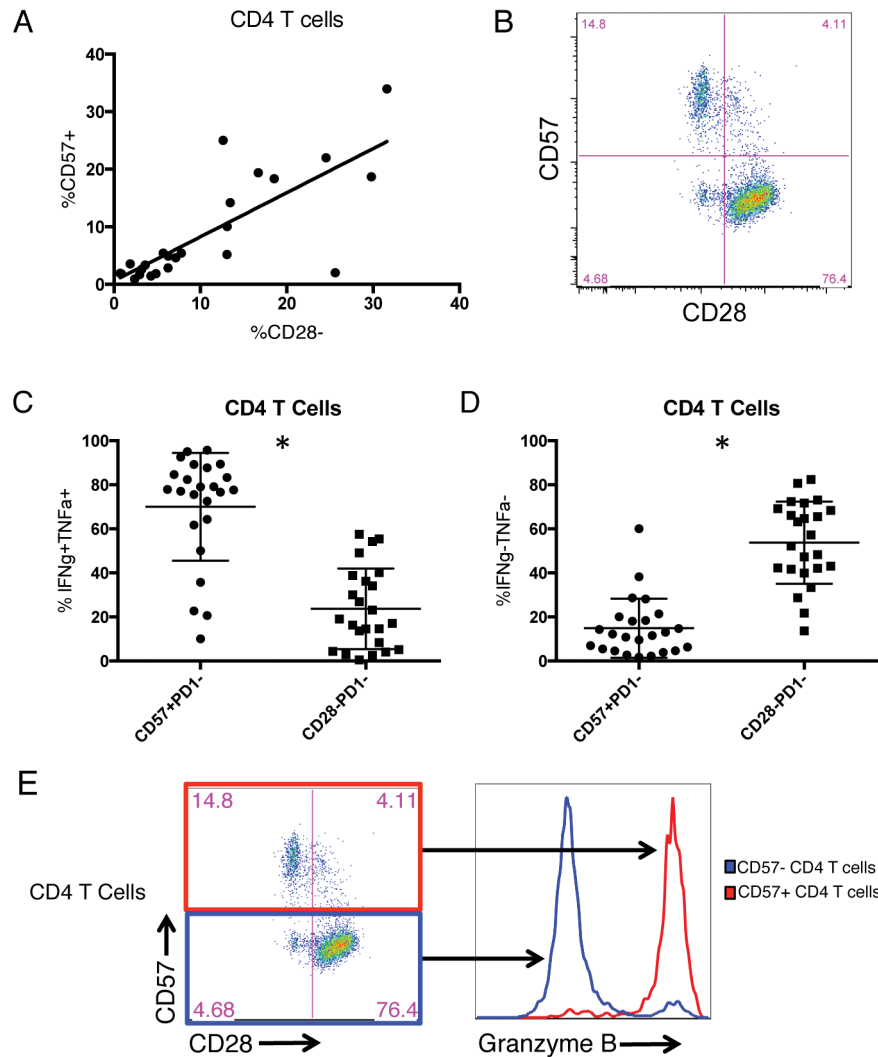


Figure 7. CD57+ CD4 T cells are polyfunctional with a cytolytic profile
 (A) Summary data for all patient samples, n=24, show an inverse correlation of CD57 and CD28 expression on CD4 T cells at baseline, prior to transplantation ($p < 0.01$, $r = 0.7759$). (B) Representative flow plot demonstrating CD57 and CD28 are not expressed in a mutually exclusive manner. (C) Baseline PBMCs from the same patients were stimulated with PMA and ionomycin. Following stimulation, most CD57+PD1- CD4 T cells produce both IFN γ and TNF α ($p < 0.01$). (D) Following stimulation with PMA and ionomycin, most CD28+PD1- CD4 T cells from the same patients' baseline PBMCs are incapable of producing either IFN γ or TNF α ($p < 0.01$). (E) Representative flow and histogram demonstrating CD57+ CD4 T cells express high levels of Granzyme B (in red) while CD57- CD4 T cells express low levels of Granzyme B (in blue).

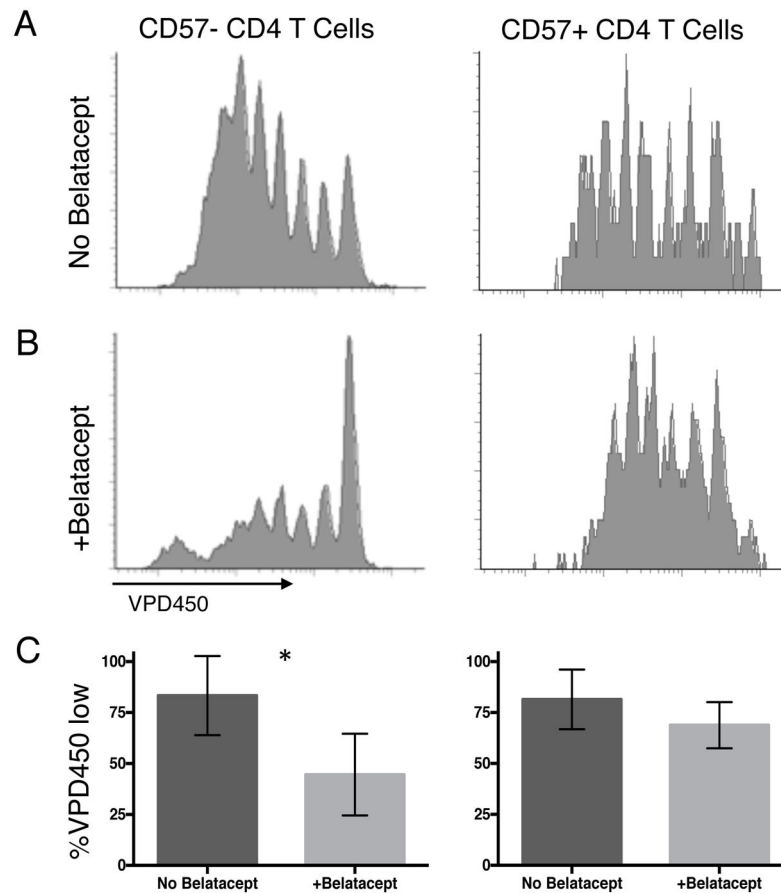


Figure 8. CD57+ CD4 T cells are resistant to in vitro immunosuppression with belatacept
 (A) CD57- (left panels) and CD57+ (right panels) CD4 T cells from healthy controls are able to proliferate in response to activated allogeneic dendritic cells in the absence of belatacept. (B) Proliferation of CD57- CD4 T cells is inhibited by belatacept while CD57+ CD4 T cells retain the ability to proliferate in the presence of belatacept. (C) Summary data shows proliferation of CD57- CD4 T cells is significantly inhibited ($p < 0.03$) with the addition of belatacept, while no significant change in proliferation is observed in CD57+ CD4 T cells ($n=4$).