

RESEARCH ARTICLE

Open Access



Biochemical and spectroscopic characterization of purified Latex Clearing Protein (Lcp) from newly isolated rubber degrading *Rhodococcus rhodochrous* strain RPK1 reveals novel properties of Lcp

Sirimaporn Watcharakul^{1,2}, Wolf Röther¹, Jakob Birke¹, Kamontam Umsakul², Brian Hodgson² and Dieter Jendrossek^{1*}

Abstract

Background: Biodegradation of rubber (polyisoprene) is initiated by oxidative cleavage of the polyisoprene backbone and is performed either by an extracellular rubber oxygenase (RoxA) from Gram-negative rubber degrading bacteria or by a latex clearing protein (Lcp) secreted by Gram-positive rubber degrading bacteria. Only little is known on the biochemistry of polyisoprene cleavage by Lcp and on the types and functions of the involved cofactors.

Results: A rubber-degrading bacterium was isolated from the effluent of a rubber-processing factory and was taxonomically identified as a *Rhodococcus rhodochrous* species. A gene of *R. rhodochrous* RPK1 that coded for a polyisoprene-cleaving latex clearing protein (Lcp_{RR}) was identified, cloned, expressed in *Escherichia coli* and purified. Purified Lcp_{RR} had a specific activity of 3.1 U/mg at 30 °C and degraded poly(1,4-*cis*-isoprene) to a mixture of oligoisoprene molecules with terminal keto and aldehyde groups. The pH optimum of Lcp_{RR} was higher (pH 8) than for other rubber-cleaving enzymes (\approx pH 7). UV-vis spectroscopic analysis of Lcp_{RR} revealed a cytochrome-specific absorption spectrum with an additional feature at long wavelengths that has not been observed for any other rubber-cleaving enzyme. The presence of one *b*-type haem in Lcp_{RR} as a co-factor was confirmed by (i) metal analysis, (ii) solvent extraction, (iii) bipyridyl assay and (iv) detection of haem-*b* specific *m/z* values via mass-spectrometry.

Conclusions: Our data point to substantial differences in the active sites of Lcp proteins obtained from different rubber degrading bacteria.

Keywords: Latex clearing protein (Lcp), Rubber oxygenase, Dioxygenase, *Rhodococcus*, Biodegradation

Background

Natural rubber is an important biopolymer that has been produced for more than a century by cultivating the rubber tree (*Hevea brasiliensis*). Natural rubber obtained by tapping of the rubber trees is used for countless applications, for example for the production of tires, sealings, latex gloves and many, many other items. The main

component of rubber latex is the hydrocarbon poly(*cis*-1,4-isoprene). Chemosynthetic rubber is also produced at a scale that is almost comparable to that of the natural compound.

Despite the economic importance of rubber and the enormous amounts of rubber waste materials that are permanently released into the environment, complete degradation in nature is rarely detected and wastes continue to accumulate. Knowledge of the reasons for this is limited. In fact, application is made of this extremely slow natural degradation for example in the use of rubber tyres to provide attachment sites for creating

* Correspondence: dieter.jendrossek@imb.uni-stuttgart.de
Sirimaporn Watcharakul and Wolf Röther, shared first authorship
¹Institute of Microbiology, University of Stuttgart, Allmandring 31, 70569 Stuttgart, Germany
Full list of author information is available at the end of the article

artificial coral reefs. However, microorganisms that can attack rubber have been detected in many ecosystems in which the physical parameters (temperature, pH, salinity) are moderate [1–7]. It is also well known that the initial microbial attack on rubber depends on the ability to produce and secrete rubber-cleaving enzymes into the environment. Only two types of rubber-cleaving enzymes are known. One is the rubber oxygenase RoxA that was first isolated from *Xanthomonas* sp. 35Y [8, 9] and so far has been found only in Gram-negative bacteria [10]. RoxA of *Xanthomonas* sp. 35Y is a *c*-type dihaem dioxygenase and cleaves poly(*cis*-1,4-isoprene) into a C₁₅ compound with a terminal keto and aldehyde group (12-oxo-4,8-dimethyl-trideca-4,8-diene-1-al, ODTD) as the main product [11–13]. The other rubber cleaving enzyme is a protein designated as latex clearing protein (Lcp) [1]. It shares no significant sequence homology with RoxA, with cytochrome *c* peroxidases or with dihaem 7,10-diol synthases [14] and is present in Gram-positive rubber degrading bacteria such as *Streptomyces* sp. K30 [1] and other *Actinobacteria*. *G. polyisoprenivorans* VH2 and *Streptomyces* sp. K30, two well-studied Gram-positive rubber degraders, oxidatively cleave poly(*cis*-1,4-isoprene) to products of different sizes but with the same keto and aldehyde end groups as in RoxA-generated ODTD [15–17]. There have been different reports published for the co-factor and metal-contents of the Lcps from *Streptomyces* sp. K30 and of *G. polyisoprenivorans* VH2 [15, 17, 18], and at present there are currently only two biochemically characterized Lcp proteins.

In this study, we used a waste pond at a rubber-processing factory in Thailand as a natural enrichment environment for rubber-degrading microorganisms and a source for the isolation of new rubber degrading strains. Taxonomic analysis revealed that one isolated strain was a member of the genus *Rhodococcus*, a taxon that had not been previously identified as having the ability to utilise rubber as a sole source of carbon and energy but that is well known for its members to have a high potential for the biodegradation of recalcitrant compounds [19]. Biochemical and biophysical characterization of the purified recombinant Lcp protein of *Rhodococcus rhodochrous* strain RPK1 revealed some unexpected properties not previously described for any other rubber-degrading enzyme in addition to properties shared with the two other characterized Lcp proteins.

Results and discussion

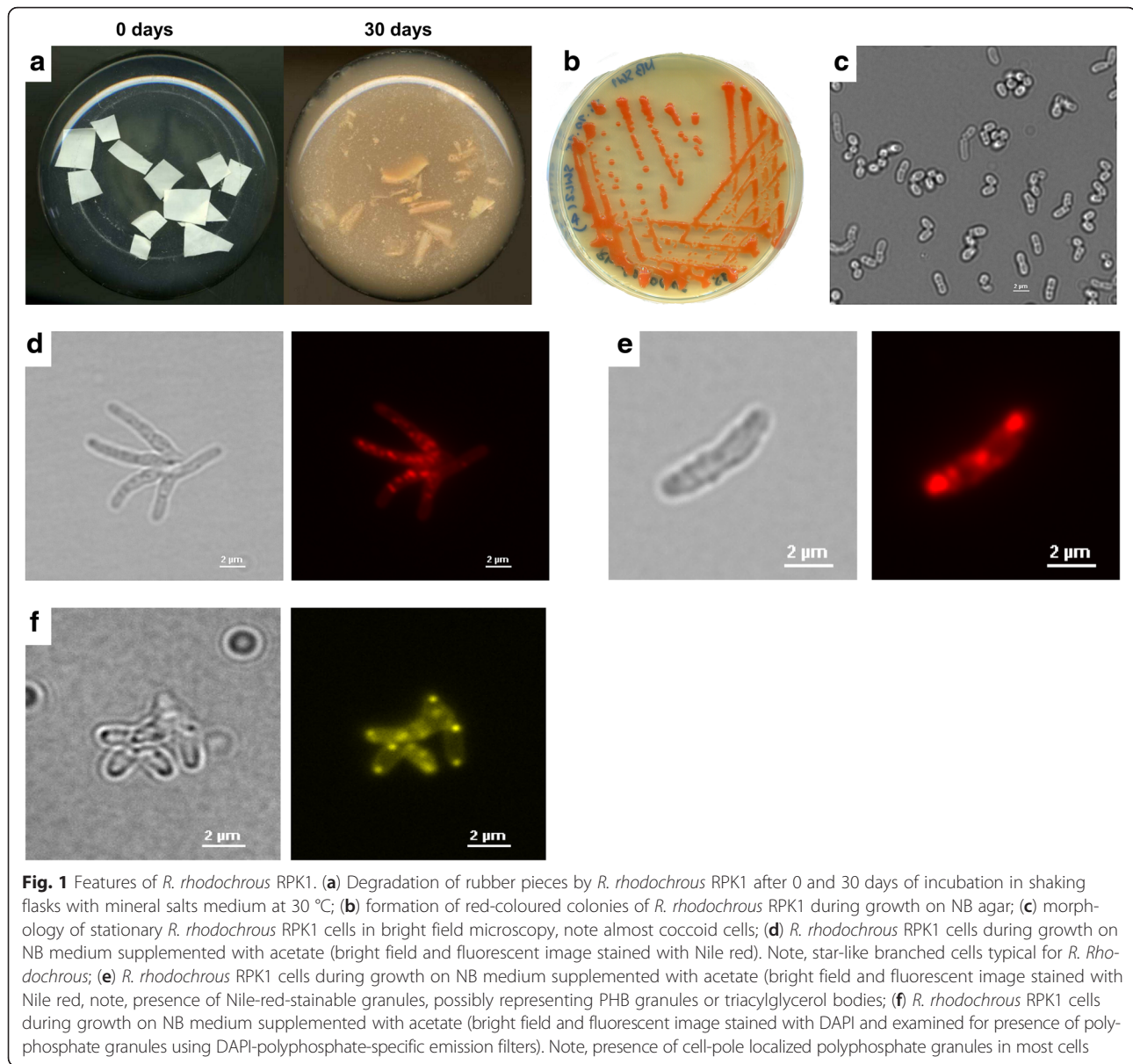
Taxonomic identification of isolate RPK1

Isolate RPK1 had a high rubber-degrading activity compared to other rubber degraders in liquid culture, as revealed by pronounced disintegration of rubber pieces (Fig. 1a). However, isolate RPK1 did not form clearing zones on an opaque polyisoprene latex mineral salts agar

while known clear zone formers such as *Xanthomonas* sp. 35Y [8] or *Streptomyces coelicolor* strain 1A [3] formed large clearing zones. Isolate RPK1 developed colonies with an intense red colour upon growth and prolonged incubation on NB agar (Fig. 1b). Microscopic examination revealed non-motile cells. Depending on the growth phase the cells were coccoid (cells from late stationary phase), rod-shaped (cells from early and late log phase) or long rods (up to 1 × 5 μm), partially branched and star-like in exponentially growing cultures (Fig. 1c–e). Isolate RPK1 was catalase positive and Gram-positive. It grew well at 43 °C but no colonies developed at 45 °C. Strain RPK1 tolerated the presence of 3 % NaCl (in NB). It accumulated storage compounds that were stainable by Nile red (polyhydroxyalkanoates or triacylglycerols) and strain RPK1 synthesised polyphosphate granules as shown by staining with DAPI (4',6-diamidino-2-phenylindole) and the use of DAPI-polyphosphate-specific emission filters in fluorescence microscopy (Fig. 1e, f). Isolate RPK1 utilised complex media (NB, LB medium) and grew with mineral salts media containing D-mannitol, fructose, acetate, benzoate or octane as a single carbon source. Glucose, sucrose, gluconate, pentane, petroleum or pyridine (excluding *Rhodococcus pyridinivorans*) were not used for growth. Polymers such as polyhydroxybutyrate (PHB), casein or starch were also not utilised by RPK1. These characteristics, in combination with the red colour of the colonies and the variable morphology of the cells indicated that the isolate RPK1 could be a member of the genus *Rhodococcus*. To verify this assumption we determined the DNA-sequence of the PCR-amplified 16S rRNA gene (accession No KU140418) and compared the sequences to the database by BLAST search. The 16S rRNA gene was 99.7 and 99.2 % identical to *Rhodococcus* MK3027 and to *R. rhodochrous* MTCC11081, respectively. Together with the biochemical and morphological data we concluded that isolate RPK1 is a member of the species *R. rhodochrous*. It differed from the rubber degrading *Xanthomonas* sp. 35Y [8, 9], *Streptomyces* sp. K30 [1], and other rubber degrading streptomycetes [3] by its inability to produce clearing zones on opaque polyisoprene latex agar plates. Previously, bacteria with a strong rubber-degrading activity but with no ability to form clearing zones had been isolated and identified as *Gordonia polyisoprenivorans* or *Gordonia westfalica* [20].

Identification of the gene coding for the latex clearing protein in *R. rhodochrous* strain RPK1

BLAST analysis revealed that many *Actinobacteria* and all known rubber-degrading *Actinobacteria* for which the genome sequences have been determined have at least one gene that codes for a so-called latex clearing protein (*lcp*) that is suspected to be responsible for the



initial oxidative attack on the polyisoprene carbon backbone [1, 21–23]. Remarkably, non clearing zone formers such as *G. polyisoprenivorans* also have functional *lcp* genes [20]. This indicates that the Lcp protein apparently is not directly responsible for the formation of clearing zones during growth on opaque latex-agar. Alignment of the amino acid sequences of the Lcp proteins from different species (most of them annotated as Lcp protein but without verified function or biochemical characterization) revealed conserved regions within the Lcp amino acid sequences [15]. We identified a hypothetical *lcp* gene in the genomes of *R. rhodochrous* strain MTCC11081, *Rhodococcus* sp. MK3027 and *Rhodococcus* sp. ARG-BN062 by screening of the published genome sequences for the presence of *lcp*-like sequences. The

deduced amino acid sequence of these hypothetical Lcp proteins included the DUF2236 domain that constitutes the central part of most if not all Lcp proteins [15]. Two oligonucleotides based on the upstream and downstream regions of the *lcp* genes of these *Rhodococcus* strains were generated (Lcp_{Rr} -PstI_for and Lcp_{Rr} -HindIII_rev) and a PCR reaction was performed with the chromosomal DNA of *R. rhodochrous* strain RPK1. A 1.5 kbp DNA fragment was obtained and its DNA sequence was determined (accession number KU140417). Analysis of the DNA sequence revealed one large open reading frame of 1227 bp that coded for a peptide of 408 amino acids (45.2 kDa, Table 1). The deduced amino acid sequence revealed strong similarities to the postulated Lcp proteins of *R. rhodochrous* strains and of several other

Table 1 Properties of biochemically characterized rubber oxygenases

| | Lcp _{Rr} | Lcp _{K30} | Lcp _{VH2} ^a | RoxA _{Xsp} |
|--|----------------------|--------------------|---------------------------------|-----------------------------------|
| Gene length [bp] | 1227 | 1224 | 1224 | 2037 |
| Residues (pre-/mature enzyme) | 408/378 | 407/377 | 407/371 ^a | 678/648 |
| Molecular mass (apo-/mature protein) [kDa] | 45.2/42.2 | 44.0/41.0 | 45.5/41.7 ^a | 74.7/71.5 |
| strep tagged [kDa] | 44.5 | 43.3 | | |
| pH optimum | 8 | 7 | 7 | 7 |
| Molar extinction coefficient [$10^4 \text{ M}^{-1} \text{ cm}^{-1}$] | 9.5 (407 nm) | 8.0 (412 nm) | n.d. | 20.6 (406 nm) |
| Metal atoms per protein molecule | | | | |
| Fe | 0.98 | 1.16/1.05 | n.d. | 2.3 |
| Cu | 0.36 | 0.056/- | sub-stoichiometric | - |
| Mn | - | - | n.d. | - |
| Ni | - | 0.12/0.05 | n.d. | - |
| Zn | - | - | n.d. | - |
| Mg, Ca | - | n.d. | n.d. | n.d. |
| Haeme type | <i>b</i> -type | <i>b</i> -type | not known/no haeme | <i>c</i> -type |
| Oxidation state of haeme iron | Fe ³⁺ | Fe ³⁺ | | Fe ³⁺ —O ²⁻ |
| UVvis effect upon addition of CO | no | no | | yes |
| Specific activity [U/mg] (23/30/37 °C) | 0.9/3.1 ^b | 1.5/n.d./4.6 | 1.3/n.d./n.d. | n.d./0.48/n.d. |
| Melting point | n.d. | 61.5 °C | n.d. | 54.3 °C |
| Conserved DUF2236 residues ^c | | | | |
| R | 163 | 164 | 161 | |
| T | 167 | 168 | 165 | |
| H | 197 | 198 | 195 | |

n.d. not determined

- not detectable (below detection limit)

^(a) deduced from [8, 9, 15] and SignalP4.1 Server

^(b) activities of Lcp_{Rr} at 37 °C were not reproducible in oxygen consumption assay

^(c) position in native sequence

Rhodococcus sp. strains (81 to 99 % identical amino acids). High degrees of similarities were also detected to many other genome-deduced sequences of putative Lcp proteins from bacteria including those from many streptomycetes and other *Actinobacteria*. When we compared the overall amino acid sequence of Lcp_{Rr} with that of the only two other biochemically characterized Lcp proteins, a 70 % (76 %) identity (similarity) and a 57 % (66 %) identity (similarity) was determined to the Lcp_{VH2} from *G. polyisoprenivorans* [20] and Lcp_{K30} protein from *Streptomyces* sp. K30 [1], respectively (Additional file 1). A 30 amino acid long sequence at the N-terminus of Lcp_{Rr} was predicted to code for a signal peptide that enabled the secretion of the protein. The molecular mass of the predicted mature protein amounted to 42.2 kDa (Table 1).

Expression and purification of Lcp_{Rr}

The DNA sequence coding for the Lcp_{Rr} signal peptide was replaced by a Strep-tag coding sequence and the modified gene was cloned under the control of an L-rhamnose-dependent promoter into p4782.1 and

subsequently transformed to *E. coli* JM109. The Lcp_{Rr} protein was purified from the combined cells of a 4.8 L *E. coli* (p4782.1::lcp_{Rr}) culture as described in the method section. A yield of approximately 7.7 mg of purified Lcp_{Rr} protein (5.3 mg/mL in BCA assay) was obtained after the final purification step. The Lcp proteins of *Streptomyces* sp. K30 (Lcp_{K30}) and of the rubber oxygenase RoxA of *Xanthomonas* sp. strain 35Y (RoxA_{Xsp}) were also purified and were used for comparison purposes. All purified proteins were separated by SDS-PAGE and checked for purity. As shown in Fig. 2, the Lcp_{Rr}, Lcp_{K30} and RoxA_{Xsp} proteins were almost homogenous. Both Lcp_{Rr} and Lcp_{K30} proteins migrated at a slightly higher apparent molecular mass (50 and 47 kDa) as deduced from the gene sequences (44.5 and 43.3 kDa, respectively). Most remarkably, concentrated Lcp_{Rr} had a brownish colour. This was in sharp contrast to the red colour of the concentrated solutions of Lcp_{K30} or of RoxA_{Xsp} and indicated that there were substantial differences of the Lcp_{Rr} protein in comparison to the other rubber-cleaving enzymes.

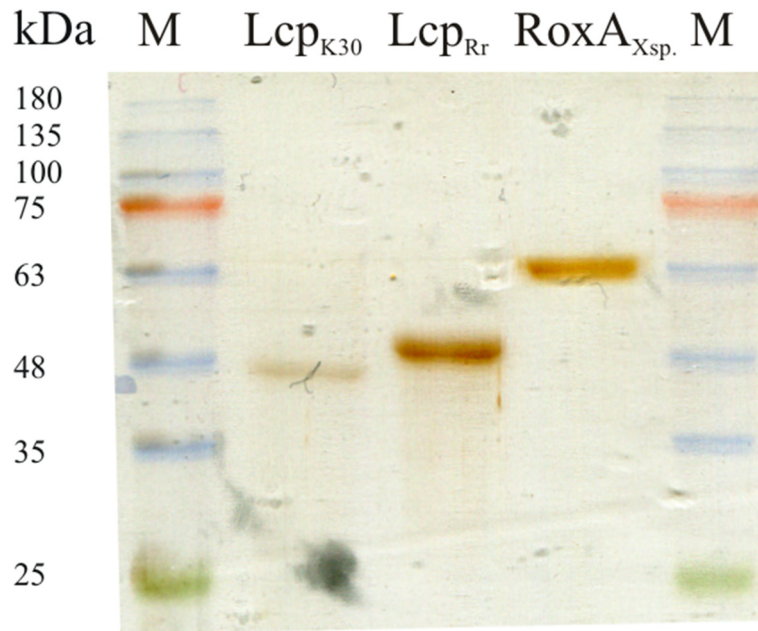


Fig. 2 SDS-PAGE of purified Lcp_{K30}, Lcp_{Rr} and RoxA_{Xsp}. Purified proteins were separated by reducing SDS-PAGE and subsequently stained with silver. The kDa values of marker proteins (M) are indicated

Biochemical properties of Lcp_{Rr}

The purified Lcp_{Rr} protein was tested for its rubber cleaving activity using both the oxygen consumption and the HPLC-based rubber cleavage product assay. The oxygen consumption assay (Fig. 3a) confirmed that Lcp_{Rr} cleaved poly(*cis*-1,4-isoprene) latex in an oxygen-dependent manner; specific activities of 0.9 U/mg and of 3.1 U/mg were determined for Lcp_{Rr} at pH 8 and at 23 °C and 30 °C, respectively (Table 1). Variable data were determined for the specific activity of Lcp_{Rr} at 37 °C possibly because of the decreasing stability of the Lcp_{Rr} protein at higher temperatures (see below). The HPLC

(Fig. 3b) and Fuchsin assay (Additional file 2) revealed that Lcp_{Rr} produced the same mixture of polyisoprene cleavage products (C₂₀ and higher oligo-isoprenoids with terminal keto and aldehyde groups) that had been determined for Lcp_{K30}. ODTD was only detectable in trace amounts for Lcp_{Rr} or for Lcp_{K30} but was the main product of the RoxA_{Xsp}-derived rubber cleavage products. Determination of the activities of purified Lcp_{Rr} at different pH values using the HPLC-based product assay revealed a pH optimum of around pH 8 (Fig. 4) that was about one pH unit higher than the pH optimum that had been previously determined for RoxA_{Xsp} or for

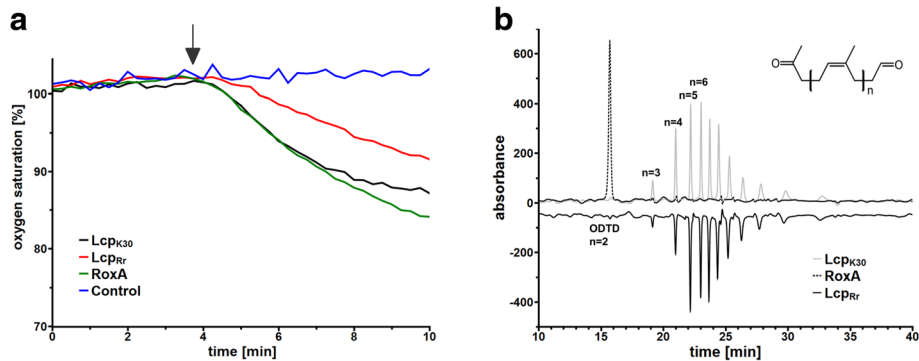
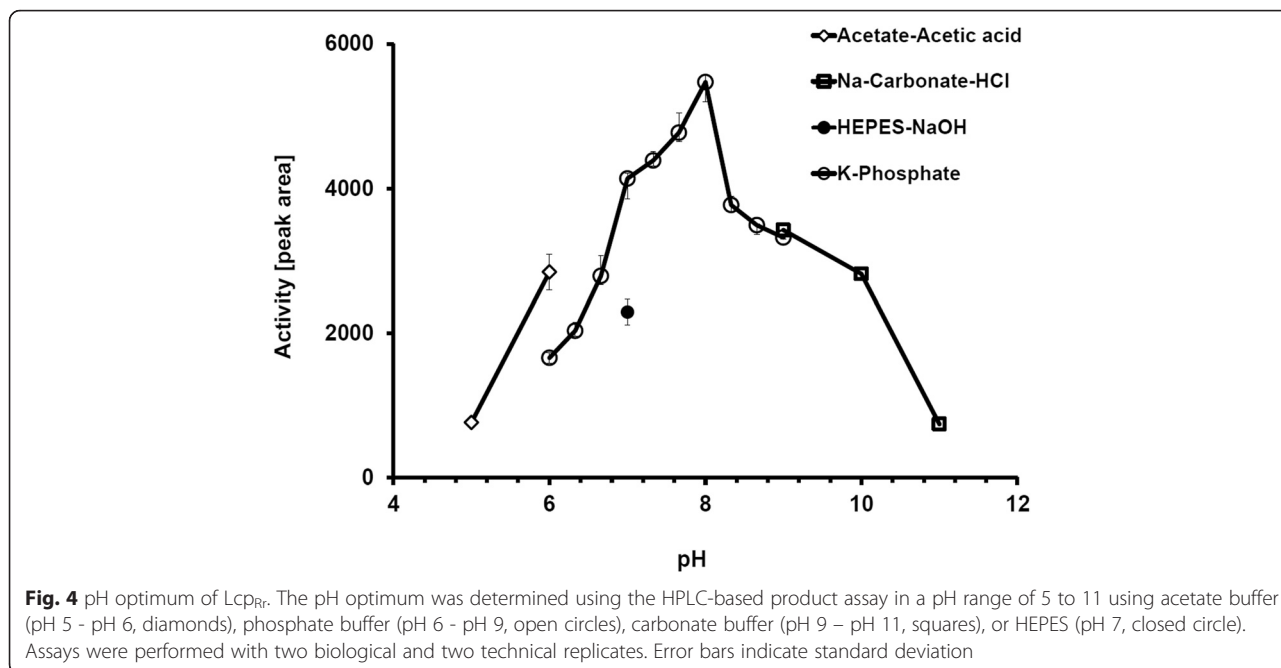


Fig. 3 Assays for oxidative polyisoprene cleavage. **(a)** Oxygen consumption assay: 4 µg of the indicated enzyme (control without enzyme) was added after 3.75 min (arrow) and oxygen saturation was recorded. Activities were calculated from the slopes of the graphs during the first minutes. The mixtures were extracted with ethylacetate after 90 min of incubation at 23 °C and the formed cleavage products were analysed by HPLC **(b)**. ODTD was the main cleavage product of RoxA_{Xsp} but was present only in trace amounts in Lcp_{Rr} and Lcp_{K30} preparations. The graph for Lcp_{Rr} is given in its inverse orientation. Assays with each enzyme were performed at least three times; one typical dataset is shown

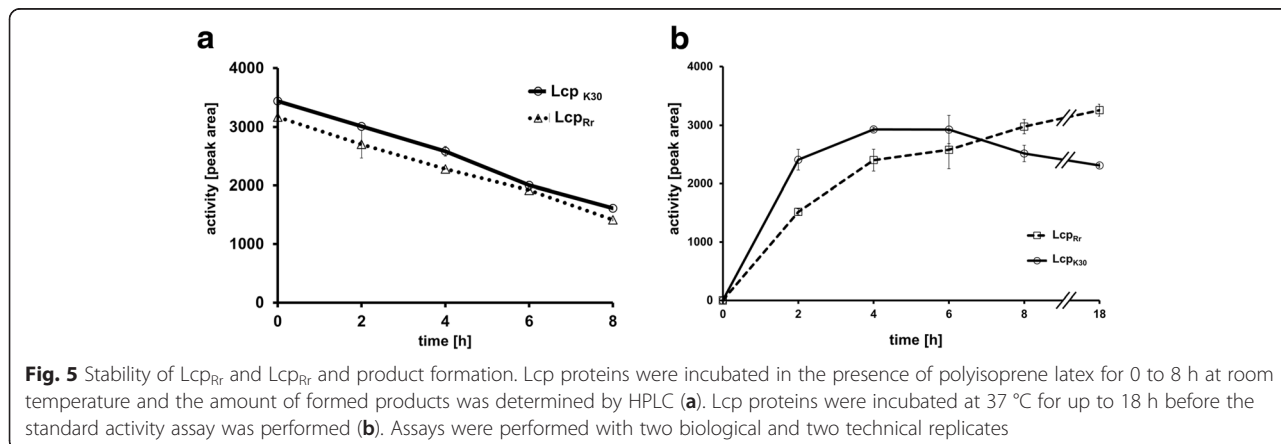


Lcp_{K30} and Lcp_{1VH2} [9, 15, 17]. The stability of all the Lcp preparations decreased upon incubation in buffer at 37 °C (Fig. 5a). In accordance with this, the concentration of rubber degrading products in an *in vitro* latex cleavage assay with Lcp_{Rr} or Lcp_{K30} increased for only 4–8 h (Fig. 5b). RoxA_{XSP}, on the other hand, was much more stable and continuously produced ODTD molecules for up to 70 h [24].

Lcp_{Rr} is a b-type cytochrome and revealed remarkable differences to Lcp_{K30}

Concentrated solutions of Lcp_{Rr} had a brown colour while the Lcp_{K30} solutions were red. Figure. 6 shows a comparison of the UVvis spectra of the purified Lcp_{K30} and Lcp_{Rr} proteins in the *as isolated* (oxidised) and in the dithionite-reduced state. Lcp_{Rr} (and Lcp_{K30}) *as isolated* both showed similar absorption maxima at 407

(412) nm and at 535 (544) nm that are typical for haem-containing proteins in the oxidised form. However, purified Lcp_{Rr} had an additional broad absorption maximum around 645 nm. The absorption band at 645 nm was absent in Lcp_{K30} and in other biochemically characterized RoxA proteins such as RoxA_{XSP} and RoxA_{CCo} [10] and was responsible for the different (brown) colour of Lcp_{Rr}. When the Lcp preparations were chemically reduced by the addition of sodium dithionite, the absorption bands at 407 (412) nm and 535 (544) nm shifted to 428 (430) nm and 560 (562) nm. A comparison of the reduced spectra of both Lcp proteins showed differences in the Q-bands (500 – 600 nm). Apparently, Lcp_{Rr} is far less pronounced in this region than Lcp_{K30}. Nevertheless, these data corresponded to the Soret and Q-bands that are typical for haem-containing proteins and strongly indicated that Lcp_{Rr} is a haem-containing



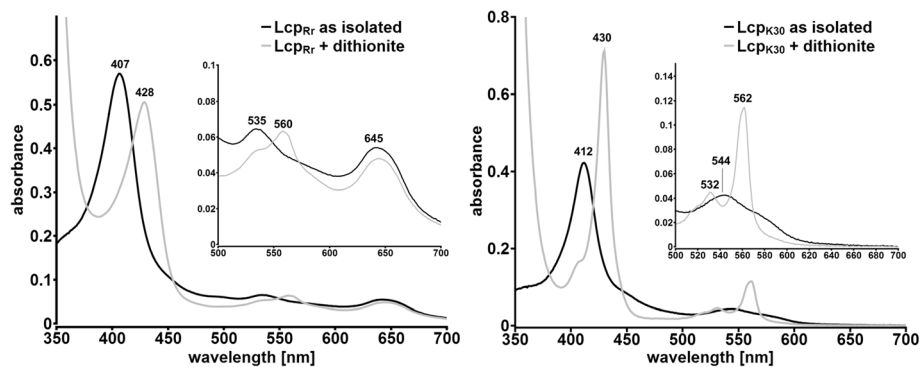


Fig. 6 UVvis spectrum of Lcp_{Rr} and Lcp_{K30} as isolated (black lines) and after reduction with dithionite (grey lines). Both Lcp proteins show a prominent band at 407 (412 nm in case of Lcp_{K30}) that is characteristic for porphyrins. After reduction with dithionite a characteristic shift of the α -band to 428 (430) nm as well as an increase in the Q-band region (560/562 nm) was observable. Assays were repeated at least three times with two separate protein batches. A typical experiment is shown

protein. The band around 645 nm, however, was not changed by the addition of dithionite.

To confirm that Lcp_{Rr} is a haem-containing protein and to determine its haem type, a metal analysis and a spectral analysis by the haem-bipyridyl assay were performed. 6.5 μg Fe/mL Lcp_{Rr} protein solution (5.3 mg protein/mL) were determined. This corresponded almost perfectly with a stoichiometry of one atom Fe per one Lcp_{Rr} molecule. It was of interest that low amounts of copper (2.8 μg /mL) were also identified and corresponded to 0.36 atoms Cu per one Lcp_{Rr} molecule. Zinc was detected at the detection limit (0.1 μg /mL) and Nickel was below the detection limit (<0.1 μg /mL); other metals (vanadium to zinc tested) were also not detected in significant amounts. Divalent cations such as magnesium or calcium were not present (below the detection limit of 0.1 μg /mL) (Table 1). The presence of approximately one third of an atom% Cu per Lcp_{Rr} molecule was unexpected because only traces of copper had been previously detected in Lcp_{K30} [18]. The determined amount of copper in Lcp_{Rr} however, was too high to be explained by an error in the determination of the metal or protein concentration. One possibility could be that the amount of copper was due to a contamination of the protein by traces of copper present in either the growth medium or in the buffer ingredients. For example, the used batch of NaCl that was present in some purification buffers was only of 98 % purity and could contain traces of heavy metals. However, sub-stoichiometric amounts of copper (precise concentration not known) had been also detected in Lcp_{1VH2} of *G. polyisoprenivorans* [15]. Addition of an equimolar concentration or of a 10-fold molar excess of copper ions [Cu(II)Cl₂] to the assay mixture with purified Lcp_{Rr} had no detectable effect on the UVvis spectrum or on the activity of Lcp_{Rr}. The addition of 50 μM CuSO₄ to the Lcp_{Rr}-expression culture produced no increased activity or yield of Lcp_{Rr}. At present,

there is no convincing explanation for the finding of variable sub-stoichiometric amounts of copper in the purified Lcp proteins from *R. rhodochrous* RPK1.

An absorption maximum of 556 nm was determined using the bipyridyl assay for Lcp_{Rr} and for haemoglobin that was used as a *b*-type cytochrome control protein (Additional file 3). This result indicated the presence of a *b*-type haem in Lcp_{Rr}. In contrast to the covalently linked *c*-type cytochromes, the haem groups of the *b*-type cytochromes are not covalently linked to the peptide chain and can be therefore extracted by an acid solvent extraction [25]. Acid solvent extraction of the purified Lcp_{Rr} yielded a coloured supernatant and a non-coloured precipitate. In contrast, solvent extraction of the *c*-type cytochromes such as RoxA_{XSP} or of other commercially available cytochrome *c* enzymes yielded a non-coloured supernatant and a red precipitate which is in agreement with the covalent attachment of porphyrin to the polypeptide. MALDI-ToF analysis of the purified Lcp_{Rr} resulted in the identification of ions with *m/z* values of 616 (data not shown) which is typical for haem *b* [26]. Taken together, all these results indicated that Lcp_{Rr} is a *b*-type cytochrome similar to Lcp_{K30} [18]. Notably, MALDI-ToF analysis of Lcp_{Rr} also revealed an ion species with *m/z* values of 619 besides that of 616 which could correspond to a verdo-haem [27]. As the activity of purified Lcp_{Rr} rapidly and substantially decreased during storage, the haem species with *m/z* value of 619 could represent a haem degradation product of the inactivated Lcp_{Rr}.

Lcp_{Rr} is insensitive to most chelating inhibitors

Metal-dependent proteins are often inhibited by chelating compounds. Therefore, a variety of known chelator compounds was tested for their effects on the activity of Lcp_{Rr} using the HPLC-based activity assay. EDTA, tiron, or phenanthroline had no significant effect on the

activity (Fig. 7). Ethyl xanthogenate partially inhibited Lcp_{Rr} by $\approx 40\%$ similar to that for Lcp_{K30} but was different from the Lcp purified from *G. polyisoprenivorans* (Lcp_{VH2}) that completely inhibited Lcp_{VH2} at 2 mM xanthogenate [15]. The only compound that had a strong effect on the activity of Lcp_{Rr} was the metal chelator diethyl dithiocarbamate (82 % inhibition, Fig. 7). However, diethyl dithiocarbamate had no effect on the UVvis spectrum of Lcp_{Rr} and this excluded a direct effect of the inhibitor at the haem site. Carbon monoxide, that completely inactivated RoxA and led to a prominent band at 415 nm by UVvis spectroscopy [18], had no effect on the absorption spectrum of Lcp_{Rr} or Lcp_{K30} as isolated and this was in agreement with the presence of an oxidised (Fe^{3+}) haem centre. Carbon monoxide had no inhibitory effect on the polyisoprene cleavage during the assay for the HPLC-based product when sufficient oxygen was also present in the assay mixture. However, when Lcp_{Rr} was incubated in carbon monoxide-saturated and oxygen-free buffer before it was added to an oxygenated polyisoprene latex assay solution, a lag phase of Lcp_{Rr} in its ability to consume oxygen was observed. The oxygen consumption and polyisoprene-cleaving activities were recovered within 30 to 50 min of incubation and exposure of the assay solution to air. The same result was obtained when Lcp_{K30} was exposed to carbon monoxide. Addition of carbon monoxide to the dithionite-reduced Lcp_{Rr} or Lcp_{K30} had visible effects on the UVvis spectra as revealed by the increase of the α -

band of Lcp_{Rr} and Lcp_{K30} . The effect of carbon monoxide on the UVvis spectrum of Lcp was reversible by addition of a dioxygen atmosphere and indicated that the binding of carbon monoxide to the chemically reduced haem group in Lcp was reversible. This is different to $RoxA_{XSP}$ that binds carbon monoxide more strongly and completely inhibits the activity. An apparent consequence of these data is that the haems of the Lcp proteins undergo a reversible Fe^{3+} to Fe^{2+} reduction during oxidative polyisoprene-cleavage and that the reduced Lcp proteins were the carbon monoxide-sensitive molecular species. This is the first evidence for a switch in the oxidation state of the active haem site of an Lcp protein during catalysis.

Lcp_{Rr} but not Lcp_{K30} is accessible for external ligands

Previous studies on rubber oxygenase RoxA had revealed that the active haem site in RoxA had only one axial amino acid ligand. The other axial ligand was a dioxygen molecule that was stably bound to haem in a $Fe^{3+}-O_2$ transition state. The oxygen molecule in RoxA could be partially removed by the addition of imidazole thereby moving the negative charge from the oxygen molecule to the iron atom (Fe^{2+}). This charge transfer resulted in a small visible change of the UVvis spectrum as revealed by an increase of the absorption of the Q-bands at 549 nm [12, 15–17]. When imidazole was added to the dithionite-reduced RoxA, substantial increases in the Soret and Q-bands were determined

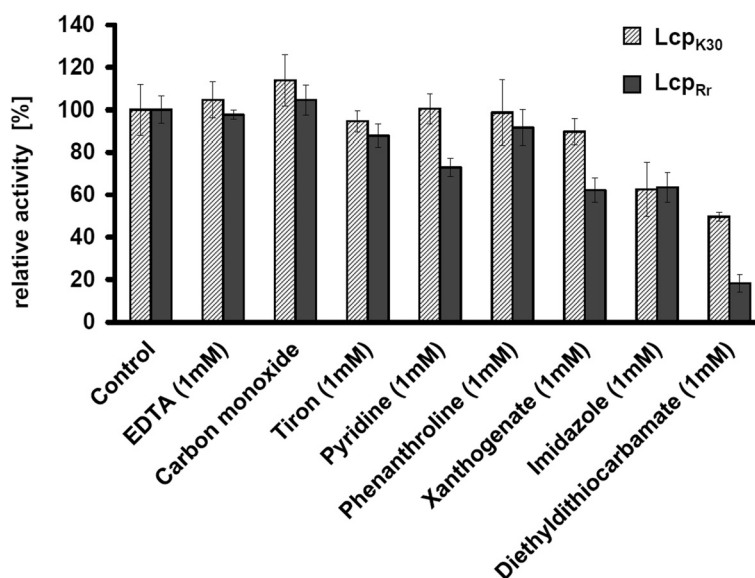


Fig. 7 Inhibition of Lcp_{Rr} by potential inhibitors. Activity was determined using the HPLC-based detection of polyisoprene cleavage products after 2 h of incubation of polyisoprene latex with Lcp at room temperature and subsequent solvent extraction of the products. The final concentration of inhibitors was 1 mM. The 100 % value corresponded to the area of the C_{35} (23 min) product peak (see Fig. 3b). Sensitivity to carbon monoxide was tested by replacing 0.5 volumes of (oxygenated) assay buffer by a deoxygenated and CO-saturated assay buffer. Cleavage products were solvent-extracted after 2 h of incubation time. At least two repetitions with two technical replicates were performed for each inhibitor. Error bars indicate the upper and lower values of one experiment

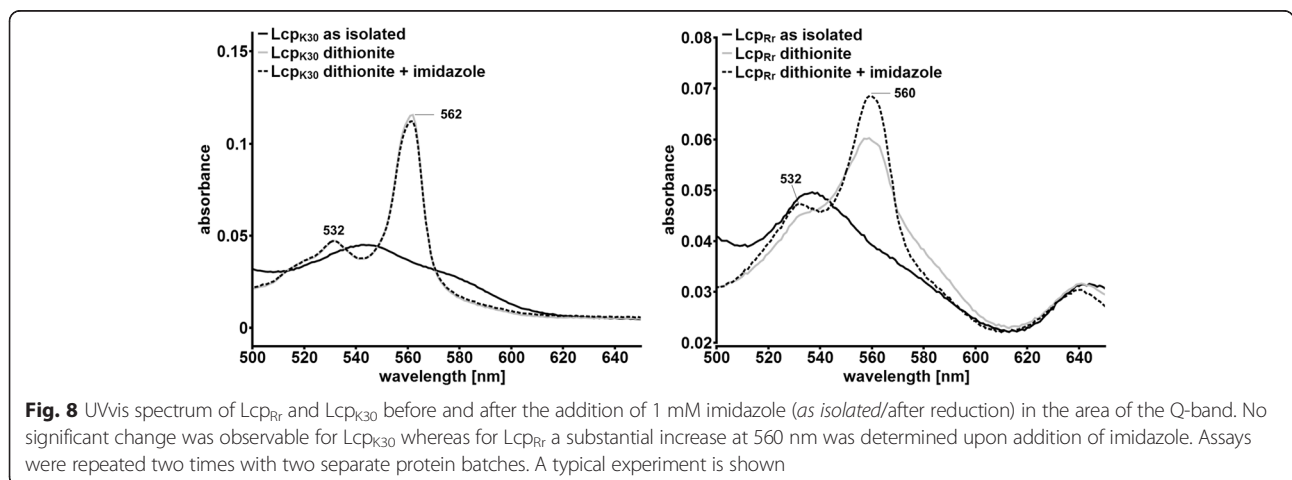
compared to the reduced RoxA bands without imidazole [18, 24]. This increase in absorption was interpreted as the result of the binding of the imidazole molecule to the (now) free sixth (axial) coordination site of the haem iron. When we performed an analog experiment with purified Lcp_{Rr} and with purified Lcp_{K30} we found remarkable differences between both Lcp proteins: addition of imidazole to the dithionite-reduced Lcp_{K30} had no effect on the UVvis spectrum and there was no detectable increase of the Q-bands. This indicated that the 6th coordination site of the haem apparently was not accessible for imidazole and the Lcp_{K30} protein was present in a “closed state”. Binding of the substrate (polyisoprene) would therefore require a conformational change of the Lcp_{K30} structure. In contrast, addition of imidazole to the dithionite-reduced Lcp_{Rr} protein resulted in a substantial increase of the Soret- and Q-bands (Fig. 8) and this can be explained by the binding of imidazole to the reduced haem. Similar results were obtained when both the Lcp proteins were treated with mercaptoethanol: no change of the UVvis spectrum was determined for Lcp_{K30} while prominent changes were detected for the Lcp_{Rr} protein (Additional file 4). In conclusion, Lcp_{K30} and Lcp_{Rr} seem to rest in a different conformation in their *as isolated* states. While Lcp_{K30} *as isolated* was in a six-fold coordinated “closed” state, the haem group of Lcp_{Rr} was readily accessible to external ligands and substrates, and this indicated a five-fold coordinated “open” state. Further evidence for this can be found in the UVvis spectra of five-fold coordinated myoglobin in the oxidised (met myoglobin) and reduced (desoxy-myoglobin) state. The UVvis spectra of the latter proteins showed similarities to the corresponding spectra of Lcp_{Rr}, particularly in the region of the less pronounced Q-bands of reduced Lcp_{Rr} compared to Lcp_{K30} as well as in the 645 nm region in the oxidised (*as isolated*) state [28]. The presence of the 645 nm absorption

band in Lcp_{Rr} might be also explained by a charge transfer phenomenon of a charged residue/ion in close neighbourhood to the haem group in Lcp_{Rr} and in its absence in Lcp_{K30} [29]. Unfortunately, only the RoxA structure [30] but no Lcp structure was available to obtain direct support for our assumption.

lcp genes are frequently present in the genomes of *Actinobacteria* [22] and many rubber degrading species have been described for members from this group [3–5, 23, 31, 32]. Most of the rubber degrading actinomycetes such as *Streptomyces* sp. K30 [1], *Streptomyces coelicolor* 1A, and many others [3, 6, 33] produce clearing zones on opaque polyisoprene latex agar. However several of the most potent rubber degraders do not produce clearing zones and apparently need a close contact to the rubber material they degrade. Two well known rubber degrading *Gordonia* species (*G. polyisoprenivorans* and *G. westfalica*) [20, 22] and also the strain from this study (*R. rhodochrous* RPK1) belong to this group of non-clearing zone formers. One might speculate that the Lcp proteins of non-clearing zone formers constitute a group that have an open conformation with free access to the active site (no conformational change is needed) and that the other Lcp proteins that have an ability to form a clearing zone have a closed form. The prototype of the first group would be Lcp_{Rr} and the prototype of the latter would be Lcp_{K30}. It will be necessary to biochemically investigate more Lcp proteins and to solve the structure of Lcp proteins to find evidence for or against this hypothesis.

Conclusions

This study extends the list of biochemically characterized rubber-degrading non-clearing zone formers by latex clearing proteins (Lcp) to the genus *Rhodococcus* (besides *Gordonia*). The detection of rubber-cleaving activity with purified Lcp_{Rr} and the absence of clearing



zones during growth on polyisoprene latex agar raises the question of whether the designation “latex clearing protein” has been well-chosen. Rubber oxygenase B (RoxB) would be an appropriate alternative. However, the designation Lcp has been used in several previous publications and has also been used for many annotated genes in genome-sequenced *Actinobacteria*. Re-classification of Lcp as RoxB therefore could lead to the confusion of other research workers.

The isolation and characterization of the Lcp protein of *R. rhodochrous* RPK1 in this study showed that all the so far studied Lcp proteins can differ in some spectroscopic features and/or in spatial arrangements of their metal ions/cofactors and indicate the presence of two or even more subgroups of Lcp proteins. It will be necessary to study more Lcp proteins to reveal the complete variability of rubber degrading enzymes present in rubber-degrading organisms.

Methods

Bacterial strains, plasmids and culture conditions

Table 2 shows the bacterial strains, plasmids and oligonucleotides that were used in this study. *R. rhodochrous* strain RPK1 was grown with nutrient broth (NB) medium or in mineral salts medium (MSM, 9 g/L

$\text{Na}_2\text{HPO}_4 \times 12 \text{ H}_2\text{O}$, 1.5 g/L KH_2PO_4 , 1 g/L NH_4NO_3 , 0.2 g/L $\text{MgSO}_4 \times 7 \text{ H}_2\text{O}$, 0.02 g/L $\text{CaCl}_2 \times 2 \text{ H}_2\text{O}$, 1.2 mg/L Fe(III)ammonium citrate with solid rubber pieces or with water-soluble carbon sources as indicated at 30 °C. Pieces (1 cm \times 1 cm) of heat-sterilised vulcanised rubber (commercial but not-powdered rubber protecting gloves) were added to the sterile mineral salts medium during the enrichment and growth of *R. rhodochrous* on rubber (0.6 % [wt/vol]). Plasmid-carrying recombinant *E. coli* strains were grown with LB medium at 22 °C or 37 °C in the presence of the appropriate antibiotic (ampicillin or kanamycin). Polyisoprene latex was kindly provided by Weber and Schaer, Hamburg (Germany) and was used after 3 washing steps in 0.1 % (wt/vol) Nonidet P40. For purification of Lcp_{Rr} recombinant *E. coli* cells were grown in LB medium supplemented with 0.1 % (wt/vol) L-rhamnose at 22 °C. Utilization of carbon sources was tested on mineral salts agar with separately filter-sterilised carbon sources at the following end concentrations (sugars, sugar alcohols and sugar acids at 0.5 % [wt/vol], sodium acetate [0.25 %, wt/vol], sodium benzoate [0.1 %, wt/vol]). Volatile compounds (alkanes) were applied by adding a quantity of 100 μL to a sterile filter paper placed in the lid of a petri disk. The plates were sealed with parafilm

Table 2 Bacterial strains, plasmids and oligonucleotides used in this study

| Strain or plasmid | Relevant characteristics | Reference |
|--|--|------------|
| <i>E. coli</i> JM109 | Plasmid storage and expression of <i>lcp</i> | |
| <i>E. coli</i> XL1-blue | Transformation strain | Stratagene |
| <i>Rhodococcus rhodochrous</i> RPK1 | Wild type strain, degrades rubber | this study |
| pUC9::strep- <i>lcp</i> _{K30} (SN5339) | Cloning vector for <i>lcp</i> _{K30} , Ap ^r | [18] |
| pUC9::strep- <i>lcp</i> _{Rr} (SN5759) | Cloning vector for <i>lcp</i> _{Rr} , Ap ^r | this study |
| p4782.1 (SN3513) | Mobilizable broad host range Expression vector, Km ^r | [37] |
| p4782.1::strep- <i>lcp</i> _{K30} (SN5496) | Coding sequence of <i>strep-lcp</i> _{K30} under Rhamnose promoter control, Km ^r | [18] |
| p4782.1::strep- <i>lcp</i> _{Rr} (SN5760) | Coding sequence of <i>strep-lcp</i> _{Rr} under Rhamnose promoter control, Km ^r | this study |
| Oligonucleotides | | |
| Lcp _{Rr} -complete_for | GCAGAATCCACATGTCCT | |
| Lcp _{Rr} -complete_rev | CGACAAACCCACAGATGA | |
| Lcp _{Rr} -mature-PstI_for | GGGCCTGCAGCGCCCTGGAGGTGGTCGCC | |
| Lcp _{Rr} -mature-HindIII_rev | CCGGTAAGCTTTCAGGGATAGTTGGG | |
| 16S-universal-for | GAGTTTGATC(A/C)TGGCTCAG | |
| 16S-universal-rev | GG(C/T)TACCTTGTTACGACT | |
| 16S-Rr-complete_for | CTGGCGCGGTGCTTAAC | |
| 16S-Rr-complete_rev | CAGTAATCCGGACAACG | |

Kanamycin resistance (Km^r), Ampicillin resistance (Ap^r)

and incubated separately at 30 °C. Utilization of PHB was tested on PHB overlay plates as described previously [34]. Growth at different temperatures was tested on NB agar plates.

Enrichment and isolation of rubber-degrading microorganisms

Liquid from a waste pond at a rubber latex processing factory in Thailand (Namom rubber factory at Namom, Songkhla) was used as an inoculum to enrich for rubber-degrading microorganisms in a mineral salts medium (MSM) that had been supplemented with 1×1 cm pieces of rubber gloves as a sole source of carbon and energy. After two weeks of incubation at 30 °C, 0.1 volumes (without pieces of rubber) were transferred to fresh medium and incubated for an additional month. Substantial disintegration of the new rubber pieces became visible and indicated that active rubber-degrading microorganisms were present. Several bacterial strains were isolated from this enrichment culture by repeated purification from streaks onto NB and LB agar plates. Each isolate was subsequently tested for its ability to degrade rubber in liquid MSM with rubber pieces as carbon source. One isolate (designated as isolate RPK1) with strong rubber-degrading activity was selected for this study.

Cloning and heterologous expression of *lcp_{Rr}* and determination of the 16S rRNA gene sequence of isolate RPK1

The *lcp_{Rr}* gene was amplified using the chromosomal DNA from *R. rhodochrous* strain RPK1 as template and the oligonucleotides *Lcp_{Rr}-complete_for* and *Lcp_{Rr}-complete_rev* as PCR primers and Takara Primestar DNA polymerase as the proof-reading polymerizing enzyme. The DNA sequence of the product was determined and is available under the accession no KU140417. Alternatively, the coding sequence of mature *Lcp_{Rr}* was amplified from chromosomal DNA using *Lcp_{Rr}-mature-PstI_for* and *Lcp_{Rr}-mature-HindIII_rev* as primers. The DNA products were purified via agarose gel electrophoresis, cleaved with restriction enzymes *PstI* and *HindIII* and ligated into plasmid pUC9::*lcp_{K30}* that had been cleaved by the same restriction enzymes. The coding sequence for strep-tagged *lcp_{Rr}* was cut out using *HindIII* and *NdeI* and was subsequently ligated into the expression plasmid p4782.1 and transformed to competent *E. coli* JM109 cells.

A part of the 16S rRNA gene of the isolate RPK1 was PCR-amplified using the primers 16S-universal_for and 16S-universal_rev. The DNA sequence of the resulting PCR product was determined (1412 bp) and revealed a strong similarity to the 16S rRNA genes of several

Rhodococcus sp. strains. The 16S rRNA gene sequence of isolate RPK1 was determined after PCR amplification using the primers (16S-Rr-complete_for and 16S-Rr-complete_rev), that were specific for the ends of the known 16S rRNA gene sequences of *R. rhodochrous* strains taken from the NCBI data base, and is now available under the accession no KU140418.

Purification of *Lcp_{Rr}*, *Lcp_{K30}* and of *RoxA_{Xsp}*

Purification of the rubber oxygenase of *Xanthomonas* sp. 35Y (*RoxA_{Xsp}*) and latex clearing protein *Lcp_{K30}* was performed as described previously [12, 18] *Lcp_{Rr}* was purified as follows: eight individual 600 mL LB cultures in 3 litre Erlenmeyer flasks were inoculated each with 0.02 volumes of a seed culture of *E. coli* JM109 harbouring the plasmid p4782.1::*lcp_{Rr}* that had been grown with the same medium. It was important that L-rhamnose (0.1 %, wt/vol) was present right from the beginning in the main cultures to maximise the yield of the expressed *Lcp_{Rr}* protein. Cells of the main culture were harvested by centrifugation after ≈ 20 h of growth at 22 °C and were immediately used for protein purification. The cell pellet was resuspended in 100 mM potassium phosphate buffer, pH 7.7, containing 150 mM sodium chloride (KPN, 2 mL KPN/g cell wet weight). A soluble cell extract was prepared by two French press steps and subsequent centrifugation at 40,000g for 40 min. The supernatant (≈ 60 mL) was directly applied to a 10 mL Strep-Tactin HC gravity flow column that had been equilibrated with KPN buffer. The column was washed with at least five volumes of KPN buffer before the *Lcp_{Rr}* protein was eluted by ≈ 30 mL of 5 mM desthiobiotin dissolved in KPN. *Lcp_{Rr}*-containing fractions were combined, desalted by running through a G25 Sephadex (26/160) Hiprep desalting column (53 mL bed volume) that had been equilibrated with 1 mM potassium phosphate (KP) buffer, pH 7.0 and subsequently concentrated to 1–2 mL via ultrafiltration (10 kDa cut-off). Remaining impurities were removed by chromatography on a Superdex 200 column (16/600, equilibrated with 1 mM KP, pH 7) at a flow rate of 1 mL/min. Combined *Lcp_{Rr}*-containing fractions were ultrafiltered (10 kDa cut-off) and concentrated to ≈ 1.5 mL. Aliquots of the purified *Lcp_{Rr}* protein were stored on ice for about 3 days (*Lcp_{K30}* up to 1 week) or shock-frozen with liquid nitrogen and stored at -70 °C.

Determination of the cytochrome type of *Lcp_{Rr}*

The haem type of *Lcp_{Rr}* was determined by the bi-pyridyl assay as described elsewhere [35]. Purified *RoxA_{Xsp}*, cytochrome *c* (horseheart, type III, Sigma, St. Louis, USA) (both *c*-type cytochromes) and haemoglobin (*b*-type) (bovine, Sigma, St. Louis, USA) were used as controls for known *c*-type and *b*-type cytochromes, respectively. 25 μL

of the respective protein stock solution (4–8 mg/mL) was added to 975 μ L solution A (100 mM sodium hydroxide, 20 % (v/v) pyridine, 0.3 mM potassium ferricyanide). Subsequently, 2–5 mg sodium dithionite were added and the spectrum of the reduced cytochrome was recorded. The absorption maxima of the resulting α -bands were characteristic for *b*-type (556 nm) and *c*-type (550 nm) cytochromes. Bi-pyridyl-haem complexes of α -type cytochromes absorb at 584–588 nm. Additional assays for determination of the haem type were performed via extraction of haem by acidic acetone and by a matrix assisted laser desorption ionization time of flight (MALDI-ToF) analysis as previously described in detail [18].

Assay of Lcp activity

An HPLC-based assay for Lcp_{R_r}-derived polyisoprene degradation products was used for most routine assays: poly(*cis*-1,4-isoprene) latex was diluted with 100 mM KP buffer, pH 7, to 0.2 % (assay volume 0.7 mL) and incubated in the presence of purified Lcp protein for 2 h at a temperature as indicated (for routine assay at room temperature [23 °C]). In the case of inhibition studies, the corresponding compound was added and gently solubilised in the reaction mix before the enzyme was added (final inhibitor concentration 1 mM). The products were extracted with 1 mL ethyl acetate (in a 2 mL Eppendorf tube), dried, and dissolved in 100 μ L methanol. Aliquots were applied to an RP8 HPLC column (12 \times 4 mm, 5 μ m particle size, 0.7 mL/min) with water (A) and methanol (B) as mobile phases. The concentration of B was increased from 50 % (v/v) to 100 % (v/v) within 15 min; products were detected at 210 nm. The C₃₅ product peak (at \approx 23 min) was used for quantification and compared to a control without inhibitor. Alternatively, activity of Lcp_{R_r} was assayed by determination of the rate of oxygen consumption in an OXY-4 mini apparatus (PreSens, Regensburg, Germany) as described previously [18]. Triplicates and controls without Lcp_{R_r} or with heat-inactivated Lcp_{R_r} were recorded simultaneously. A stability assay was performed by incubation of the purified Lcp_{R_r} protein in the assay buffer at 37 °C for variable time periods. The remaining activity of the protein was determined as described above.

Other techniques

The concentration of protein solutions was determined by the bicinchoninic acid (BCA) method. The concentrations of purified rubber-cleaving enzymes were also determined from the molar extinction coefficients of Lcp_{R_r}, Lcp_{K30} and RoxA_{X_{sp}}: Lcp_{R_r}, $\epsilon_{407} = 9.5 \times 10^4 \text{ M}^{-1} \text{ cm}^{-1}$, Lcp_{K30}, $\epsilon_{412} = 8.0 \times 10^4 \text{ M}^{-1} \text{ cm}^{-1}$, and RoxA_{X_{sp}}, $\epsilon_{406} = 2.06 \times 10^5 \text{ M}^{-1} \text{ cm}^{-1}$. Separation of proteins was performed by polyacrylamide gel electrophoresis in the presence of sodium dodecyl sulphate (SDS-PAGE) under

reducing (2-mercaptoethanol) conditions. The metal content of the purified Lcp protein was determined using inductively coupled plasma-MS (ICP-MS) by the Spurenanalytisches Laboratorium Dr. Baumann (Germany). Fuchsin staining of polyisoprene degradation products was performed by addition of a 1 % Fuchsin solution (0.5 g Fuchsin, 12.5 mL acetic acid, 2.5 g Na₂S₂O₃, 0.2 mL HCl (37 %) and 37.5 mL H₂O) to the Lcp assay mixture. Staining of the cells for PHB and polyphosphate was performed as described previously [36].

Ethics approval

Not applicable.

Consent for publication

Not applicable.

Availability of data and materials

The DNA sequence of the *R. rhodochrous* RPK1 *lcp* and 16S rRNA gene have been submitted to NCBI and are available under the accession No KU140417 and KU140418. The *R. rhodochrous* RPK1 strain has been deposited at the Deutsche Sammlung für Mikroorganismen und Zellkulturen (DSMZ) and can be obtained once the Nagoya protocol regulations have been finished. Until then, strain RPK1 can be obtained from the lab of S.W. and K.U. upon request.

Abbreviations

BCA, bicinchoninic acid; BLAST, basic local alignment search tool; DAPI, 4',6'-diamidino-2-phenylindol; HPLC, high pressure liquid chromatography; ICP, inductively coupled plasma; KPN, potassium phosphate-sodium chloride; LB, lysogeny broth; Lcp, latex clearing protein; MALDI-ToF, matrix-assisted laser desorption ionisation time of flight; MS, mass spectrometry; MSM, mineral salts medium; NB, nutrient broth; ODTD, 12-oxo-4,8-dimethyl-trideca-4,8-diene-1-al; PHB, polyhydroxybutyrate; RoxA, rubber oxygenase A; SDS-PAGE, sodium dodecyl sulphate polyacrylamide gel electrophoresis; UVvis, ultra violet visible.

Additional files

Additional file 1: Identity and similarity of biochemically characterized Lcp proteins and amino acid sequences alignment of biochemically characterized Lcp proteins. (DOCX 61 kb)

Additional file 2: Detection of aldehyde products of Lcp-degraded polyisoprene by Fuchsin assay. (DOCX 1.91 kb)

Additional file 3: Bipyridyl assay of Lcp_{R_r} in comparison to Lcp_{K30}. (DOCX 128 kb)

Additional file 4: UVvis spectra of Lcp_{K30} and Lcp_{R_r} in the presence of mercaptoethanol. (DOCX 356 kb)

Acknowledgements

The help of T. Jurkowski (Institute of Biochemistry, University Stuttgart) in MALDI-MS analysis and the work of Simone Reinhardt and Anna Schweter during some experiments is greatly acknowledged.

Funding

This work was funded by grants of the Deutsche Forschungsgemeinschaft to D.J. and of the Strategic Scholarships Fellowships Frontier Research Networks, Thailand to S.W.

Authors' contributions

SW, and WR. carried out most experiments. JB, KU, and DJ. designed the study; JB and DJ. supervised the experiments; all authors analysed the data, DJ. wrote the manuscript. BH. checked and improved language. All authors read and approved the manuscript.

Competing interests

The authors declare that they have no competing interests.

Author details

¹Institute of Microbiology, University of Stuttgart, Allmandring 31, 70569 Stuttgart, Germany. ²Prince of Songkla University, Songkla, Thailand.

Received: 19 January 2016 Accepted: 10 May 2016

Published online: 23 May 2016

References

- Rose K, Tenberge KB, Steinbüchel A. Identification and characterization of genes from *Streptomyces* sp. strain K30 responsible for clear zone formation on natural rubber latex and poly(*cis*-1,4-isoprene) rubber degradation. *Biomacromolecules*. 2005;6:180–8.
- Heisey RM, Papadatos S. Isolation of microorganisms able to metabolize purified natural rubber. *Appl Environ Microbiol*. 1995;61:3092–7.
- Jendrossek D, Tomasi G, Kroppenstedt RM. Bacterial degradation of natural rubber: a privilege of actinomycetes? *FEMS Microbiol Lett*. 1997;150:179–88.
- Linos A, Berekaa MM, Reichelt R, Keller U, Schmitt J, Flemming HC, Kroppenstedt RM, Steinbüchel A. Biodegradation of *cis*-1,4-polyisoprene rubbers by distinct actinomycetes: microbial strategies and detailed surface analysis. *Appl Environ Microbiol*. 2000;66:1639–45.
- Imai S, Ichikawa K, Muramatsu Y, Kasai D, Masai E, Fukuda M. Isolation and characterization of *Streptomyces*, *Actinoplanes*, and *Methylobium* strains that are involved in degradation of natural rubber and synthetic poly(*cis*-1,4-isoprene). *Enzyme Microb Technol*. 2011;49:526–31.
- Chia KH, Nanthini J, Thottathil GP, Najimudin N, Haris MRHM, Sudesh K. Identification of new rubber-degrading bacterial strains from aged latex. *Polym Deg Stab*. 2014;109:354–61.
- Imai S, Yoshida R, Endo Y, Fukunaga Y, Yamazoe A, Kasai D, Masai E, Fukuda M. *Rhizobacter gummiphilus* sp. nov. a rubber-degrading bacterium isolated from the soil of a botanical garden in Japan. *J Gen Appl Microbiol*. 2013;59:199–205.
- Tsuchii A, Takeda K. Rubber-degrading enzyme from a bacterial culture. *Appl Environ Microbiol*. 1990;56:269–74.
- Braaz R, Fischer P, Jendrossek D. Novel type of heme-dependent oxygenase catalyzes oxidative cleavage of rubber (poly-*cis*-1,4-isoprene). *Appl Environ Microbiol*. 2004;70:7388–95.
- Birke J, Röther W, Schmitt G, Jendrossek D. Functional identification of rubber oxygenase (RoxA) in soil and marine myxobacteria. *Appl Environ Microbiol*. 2013;79:6391–9.
- Braaz R, Armbruster W, Jendrossek D. Heme-dependent rubber oxygenase RoxA of *Xanthomonas* sp. nov. cleaves the carbon backbone of poly(*cis*-1,4-isoprene) by a dioxygenase mechanism. *Appl Environ Microbiol*. 2005;71:2473–8.
- Schmitt G, Seiffert G, Kroneck PMH, Braaz R, Jendrossek D. Spectroscopic properties of rubber oxygenase RoxA from *Xanthomonas* sp., a new type of dihaem dioxygenase. *Microbiology*. 2010;156:2537–48.
- Birke J, Hamsch N, Schmitt G, Altenbuchner J, Jendrossek D. Phe317 is essential for rubber oxygenase RoxA activity. *Appl Environ Microbiol*. 2012;78:7876–83.
- Estupiñán M, Álvarez-García D, Barril X, Diaz P, Manresa A. In silico/in vivo insights into the functional and evolutionary pathway of *Pseudomonas aeruginosa* oleate-diol synthase. Discovery of a new bacterial di-heme cytochrome c peroxidase subfamily. *PLoS ONE*. 2015;10:e0131462.
- Hiessl S, Böse D, Oettermann S, Eggers J, Pietruszka J, Steinbüchel A. Latex clearing protein—an oxygenase cleaving poly(*cis*-1,4-isoprene) rubber at the *cis* double bonds. *Appl Environ Microbiol*. 2014;80:5231–40.
- Ibrahim EMA, Arenskotter M, Luftmann H, Steinbüchel A. Identification of poly(*cis*-1,4-isoprene) degradation intermediates during growth of moderately thermophilic actinomycetes on rubber and cloning of a functional *lcp* homologue from *Nocardia farcinica* strain E1. *Appl Environ Microbiol*. 2006;72:3375–82.
- Birke J, Jendrossek D. Rubber oxygenase (RoxA) and latex clearing protein (Lcp) cleave Rubber to different products and use different cleavage mechanisms. *Appl Environ Microbiol*. 2014;80:5012–20.
- Birke J, Röther W, Jendrossek D. Latex clearing protein (Lcp) of *Streptomyces* sp. strain K30 is a *b*-type cytochrome and differs from rubber oxygenase A (RoxA) in its biophysical properties. *Appl Environ Microbiol*. 2015;81:3793–9.
- Martínková L, Uhnáková B, Pátek M, Nesvera J, Kren V. Biodegradation potential of the genus *Rhodococcus*. *Environ Int*. 2009;35:162–77.
- Broker D, Dietz D, Arenskotter M, Steinbüchel A. The genomes of the non-clearing-zone-forming and natural-rubber-degrading species *Gordonia polyisoprenivorans* and *Gordonia westfalica* harbor genes expressing Lcp activity in *Streptomyces* strains. *Appl Environ Microbiol*. 2008;74:2288.
- Hiessl S, Schuldes J, Thürmer A, Halbsguth T, Broker D, Angelov A, Liebl W, Daniel R, Steinbüchel A. Involvement of two latex-clearing proteins during rubber degradation and insights into the subsequent degradation pathway revealed by the genome sequence of *Gordonia polyisoprenivorans* strain VH2. *Appl Environ Microbiol*. 2012;78:2874–87.
- Yikmis M, Steinbüchel A. Historical and recent achievements in the field of microbial degradation of natural and synthetic rubber. *Appl Environ Microbiol*. 2012;78:4543–51.
- Nanthini J, Chia K-H, Thottathil GP, Taylor TD, Kondo S, Najimudin N, Baybayan P, Singh S, Sudesh K. Complete genome sequence of *Streptomyces* sp. strain CFMR 7, a natural rubber degrading actinomycete isolated from Penang, Malaysia. *J Biotechnol*. 2015;214:47–8.
- Schmitt G: Spektroskopische Charakterisierung der Rubber Oxygenase RoxA aus *Xanthomonas* sp. 35Y. Doctoral thesis, University of Stuttgart, Germany, 2012.
- Morrison M, Horie S. Determination of heme *a* concentration in cytochrome preparations by hemochromogen method. *Anal Biochem*. 1965;12:77–82.
- Yang HJ, Park KH, Sin S, Lee J, Park S, Kim HS, Kim J. Characterization of heme ions using MALDI-TOF MS and MALDI FT-ICR MS. *Int J Mass Spectrom*. 2013;343–344:37–44.
- Andreolletti P, Mouesca J-M, Gouet P, Jaquinod M, Capeillère-Blandin C, Jouve HM. Verdoheme formation in *Proteus mirabilis* catalase. *Biochim Biophys Acta*. 2009;1790:741–53.
- Schenkman KA, Marble DR, Burns DH, Feigl EO. Myoglobin oxygen dissociation by multiwavelength spectroscopy. *J Appl Physiol*. 1997;82:86–92.
- Pond AE, Roach MP, Sono M, Rux AH, Franzen S, Hu R, Thomas MR, Wilks A, Dou Y, Ikeda-Saito M, Ortiz de Montellano PR, Woodruff WH, Boxer SG, Dawson JH. Assignment of the heme axial ligand(s) for the ferric myoglobin (H93G) and heme oxygenase (H25A) cavity mutants as oxygen donors using magnetic circular dichroism. *Biochemistry*. 1999;38:7601–8.
- Seidel J, Schmitt G, Hoffmann M, Jendrossek D, Einsle O. Structure of the processive rubber oxygenase RoxA from *Xanthomonas* sp. *Proc Natl Acad Sci U S A*. 2013;110:13833–8.
- Linos A, Berekaa MM, Steinbüchel A, Kim KK, Sproer C, Kroppenstedt RM. *Gordonia westfalica* sp. nov. a novel rubber-degrading actinomycete. *Int J Syst Evol Microbiol*. 2002;52:1133–9.
- Arenskotter M, Baumeister D, Berekaa MM, Pötter G, Kroppenstedt RM, Linos A, Steinbüchel A. Taxonomic characterization of two rubber degrading bacteria belonging to the species *Gordonia polyisoprenivorans* and analysis of hyper variable regions of 16S rDNA sequences. *FEMS Microbiol Lett*. 2001;205:277–82.
- Bode HB, Kerkhoff K, Jendrossek D. Bacterial degradation of natural and synthetic rubber. *Biomacromolecules*. 2001;2:295–303.
- Jendrossek D, Müller B, Schlegel HG. Cloning and characterization of the poly(hydroxyalkanoic acid)-depolymerase gene locus, *phaZ1*, of *Pseudomonas lemoignei* and its gene product. *Eur J Biochem*. 1993;218:701–10.
- Berry EA, Trumppower BL. Simultaneous determination of hemes a, b, and c from pyridine hemochrome spectra. *Anal Biochem*. 1987;161:1–15.
- Tumlrirsch T, Sznajder A, Jendrossek D. Formation of polyphosphate by polyphosphate kinases and its relationship to PHB accumulation in *Ralstonia eutropha* H16. *Appl Environ Microbiol*. 2015;81:8277–93.
- Altenbuchner J, Viell P, Pelletier I. Positive selection vectors based on palindromic DNA sequences. *Meth Enzymol*. 1992;216:457–66.