

Erratum

J Vet Intern Med 2014;28:1139

Avery PR, Burton J, Bromberek JL, Seelig DM, Elmslie R, Correa S, Ehrhart EJ, Morley PS, Avery AC. Flow Cytometric Characterization and Clinical Outcome of CD4+ T-Cell Lymphoma in Dogs: 67 Cases. *J Vet Intern Med* 2014; 28: 538–546.

Article first published online: 3 FEB 2014 | DOI: 10.1111/jvim.12304

Table 2: There was a misidentification of the reference variable for cell size. The p value for PFI difference for Multi-agent tx should be 0.0039 as stated in the text, not the 0.0091 listed in the table. The revised Table 2 is below.

Table 2. Summary of PFI and survival analysis for selected clinical and immunophenotypic characteristics.

Variable (# of patients)*	Univariable Analysis			Multivariable Analysis		
	PFI	P-value for PFI difference	Overall survival (range)	P-value for survival difference	Hazard ratio for PFI	Hazard ratio for survival
CD5 expression						
Positive (34)	77 (65 - 111)	0.1353	143 (92 - 159)	0.0056	—	2.5 (1.2 - 5.1)
Negative (26)**	98 (65 - 175)		195 (137 - 314)			1
Cell size						
Small (30)	121 (73 - 191)	0.0012	206 (146 - 235)	0.0146	1	1
Large (31)	77 (44 - 91)		130 (91 - 159)		3.3 (1.6 - 6.6)	2.2 (1.1 - 4.3)
Multi-agent tx						
MOPP (10)	131 (35 - 266)	0.0039	114 (35 - 194)	0.0001	1.6 (0.6 - 4.1)	2.0 (0.7 - 5.3)
Single Agent (22)	70 (43 - 81)		170 (104 - 218)		3.1 (1.5 - 6.3)	1.6 (0.7 - 3.5)
Prednisone (11)	—		80 (8 - 130)		—	2.7 (1.1 - 6.7)
CHOP (18)	109 (91 - 191)		237 (159 - 312)		1	1
Calcium status						
High (28)	83 (65 - 182)	0.5532	141 (95 - 185)	0.1323	—	—
Normal (22)	113 (73 - 167)		170 (137 - 272)			—
Mediastinal Mass						
Present (15)	81 (28 - 113)	0.0801	130 (40 - 195)	0.1762	—	—
Absent (18)	140 (65 - 191)		155 (91 - 435)			—
Substage						
b (13)	97 (48 - 204)	0.7495	106 (20 - 195)	0.0085	—	4.1 (1.7 - 9.9)
a (48)	91 (69 - 111)		164 (137 - 210)			1

*Numbers reflect the number of dogs analyzed for overall survival. Fewer animals were analyzed for PFI since the prednisone treated patients were not included in this group. Only patients with CD45+ T cell lymphoma are included in this table.

**Not all values were available for all dogs. For example in one dog, CD5 staining was not performed so there are only 60 dogs in the CD5 outcome analysis.

Figure 3 legend: There was a difference between 2 parameters in PFI as stated in the text and reflected in Table 2.

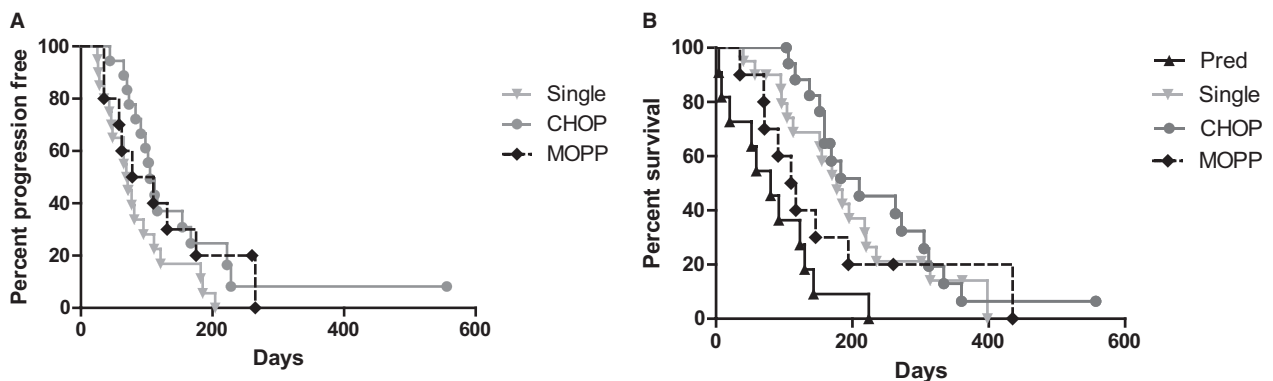


Fig 3. Progression-free interval (PFI) is significantly different for single-agent chemotherapy compared with CHOP. Overall survival is significantly different for prednisone only compared to CHOP. Only dogs with CD4+/CD45+ lymphoma were included in this analysis.