

SCIENTIFIC REPORTS



OPEN

Fermentation based carbon nanotube multifunctional bionic composites

Luca Valentini¹, Silvia Bittolo Bon¹, Stefano Signetti², Manoj Tripathi³, Erica Iacob³ & Nicola M. Pugno^{2,3,4}

Received: 18 February 2016

Accepted: 12 May 2016

Published: 09 June 2016

The exploitation of the processes used by microorganisms to digest nutrients for their growth can be a viable method for the formation of a wide range of so called biogenic materials that have unique properties that are not produced by abiotic processes. Here we produced living hybrid materials by giving to unicellular organisms the nutrient to grow. Based on bread fermentation, a bionic composite made of carbon nanotubes (CNTs) and a single-cell fungi, the *Saccharomyces cerevisiae* yeast extract, was prepared by fermentation of such microorganisms at room temperature. Scanning electron microscopy analysis suggests that the CNTs were internalized by the cell after fermentation bridging the cells. Tensile tests on dried composite films have been rationalized in terms of a CNT cell bridging mechanism where the strongly enhanced strength of the composite is governed by the adhesion energy between the bridging carbon nanotubes and the matrix. The addition of CNTs also significantly improved the electrical conductivity along with a higher photoconductive activity. The proposed process could lead to the development of more complex and interactive structures programmed to self-assemble into specific patterns, such as those on strain or light sensors that could sense damage or convert light stimulus in an electrical signal.

Microorganisms play an essential role in the biogenic of elements and in the formation of materials with unexplored properties^{1–3}. Biogenic materials are formed in the nanometer scale through diverse metabolic activities and by passive surface reactions on cell walls or extracellular structures³. For example, it is known that acetobacter bacteria spins cellulose, a byproduct, as it consumes glucose, the reasons for which are unclear but it is thought the material might protect the bacteria colony from external contamination⁴. Extracellular polymeric secretions are multipurpose polymers that are important for applications in several fields. Extracellular polymeric secretions are involved in cellular associations, bacterial nutrition, and interaction of bacteria with their bio-physicochemical environment. Thus to create the material, the microorganism requires specific conditions.

Yeast is a cellular factory which is able of taking simple molecules from its environment, such as sugars, and synthesize new elements needed for its growth at mild temperature^{5–8}. Moreover, many of such microorganisms during their growth have the ability to adhere and to form a biofilm on different kinds of surfaces in nature^{8,9}. It would be expected that a solution of nanomaterials and water, for example, can be mixed with nutrients for the microorganisms giving novel outstanding properties to the end material after the digestion process has taken place^{10–12}. Fermentation of microorganism in the presence of nanomaterials could be a viable method to create a biogenic composite. It could be possible to get from large cultures enough material to create composites with unexpected properties¹³.

Yeast cells are widely used in industrial and biological processes. The beer's yeast, *Saccharomyces cerevisiae*, is the yeast responsible for sugar fermentation and has been used for centuries in wine and bread making. Moreover beer yeast extract is inexpensive, non-toxic, easy to prepare and abundantly available in nature^{14,15}. Flocculation of yeast cells is defined as the phenomenon wherein yeast cells sediment rapidly from the medium in which they

¹Dipartimento di Ingegneria Civile e Ambientale, Università di Perugia, UDR INSTM, Strada di Pentima 4, I-05100 Terni, Italy. ²Laboratory of Bio-Inspired and Graphene Nanomechanics, Department of Civil, Environmental and Mechanical Engineering, University of Trento, via Mesiano 77, I-38123 Trento, Italy. ³Centre for Materials and Microsystems, Fondazione Bruno Kessler, via Sommarive 18, I-38123 Trento, Italy. ⁴School of Engineering and Materials Science, Queen Mary University of London, Mile End Road, E1 4NS London, United Kingdom. Correspondence and requests for materials should be addressed to L.V. (email: luca.valentini@unipg.it) or N.M.P. (email: nicola.pugno@unitn.it)

are suspended and it occurs in the fermentation process when the sugar sources are exhausted¹⁶. Flocculation of microorganisms is simple, cheap and facile for thin film deposition because it does not require complex procedures. However, to the best of our knowledge, the spontaneous incorporation of nanomaterials in the inner structure of yeast cells during the fermentation, has not been achieved to date.

Carbon nanotubes (CNTs) are nowadays materials produced at the industrial scale¹⁷, making them a tunable platform for mimicking what occurs in nature when cells grow on nanostructured surfaces. The mechanism of nutrition and growth of microorganism represents an unexplored field to design interface between microorganism and such nanomaterials. In several recent studies, CNTs were shown to be a very useful electron transfer for enzymatic as well as for cellular applications¹⁸. Considering the conducting nature of CNTs, the interactions between microorganism and carbon nanotubes could be used for generating bionic nanomaterials with unexpected electrical properties. Such living materials can be considered as bionic materials because they have the benefits of both biological world which can self-organize and that of non-living materials, which add functions such as electronic transport.

Several cells (neurons, muscle) were found to respond to electrical signals but unfortunately are difficult to culture with procedures that are time consuming^{19,20}. *Saccharomyces cerevisiae* is instead more robust and accessible fungi cell that allow fast and reliable experiments to investigate their electrical behavior when combined with conducting nanomaterials. Hence, we decided to explore their possible use in electrical applications and particularly to examine whether yeast after its fermentation and flocculation can interact in synergy with CNTs still benefiting from their electrical conductivity, high surface area, flexibility and capability to be wrapped by microorganisms.

Here, we report the production of beer's yeast cells/carbon nanotube composite directly by fermentation of the yeast extract in presence of CNT aqueous dispersion. We observe in the composite an increment of the mechanical properties with respect to the neat fermented yeast, in terms of tensile strength, Young's and toughness moduli. The electrical and optical analysis demonstrated that fermentation of the beer's yeast in presence of CNTs enhances the electrical conductivity as well as the photoconducting activity of the composite film. Such results could open the way to the realization and exploitation of such bionic structures for the realization of novel functional living materials.

Experimental Details

Carbon nanotubes (NC 7000) were supplied by Nanocyl and their structure was confirmed by transmission electron microscopy (see Fig. S1 of Supporting Information) having an average diameter 9.5 nm and an average length 1.5 μm . *Saccharomyces cerevisiae* based commercial beer yeast extract with additives was used as the medium for fermentation. Water solution (50 mg/ml) of yeast was prepared in a sterilized flask at 110 rpm and 30 °C for 1 h. After that, sugar (i.e. sucrose) was added for the fermentation. The amount of sugar added is usually between 3 and 5 times the weight of the medium. Neat and fermented yeast were then drop into sterilized circular aluminum molds and the liquid medium was left to evaporate at 30 °C during the night. Films of circular shape were then obtained.

Water dispersion of CNTs (1 mg/ml) were prepared by tip sonication. The dispersion of CNTs (1 mg/ml) was then added to the yeast solution and stirred at 110 rpm at 30 °C for 1 h. Then the yeast/CNTs solution was put into a sterilized circular aluminum mold, and the liquid medium was left to evaporate at 30 °C during the night. In another sterilized flask the same procedure was adopted by adding sugar to promote the fermentation of the yeast/CNTs solution (Fig. 1a). After fermentation, the liquid medium was dried in a sterilized mold and a composite film was obtained.

Field emission scanning microscopy (FESEM) was used to investigate the cross section of the samples obtained by fracture in liquid nitrogen. Morphological characterization was carried out on films deposited on Si substrates by means of an Atomic Force Microscopy (AFM) apparatus (P47H Solver from NT-MDT) in intermittent contact mode at room temperature in air condition. A silicon cantilever with a tip radius of approximately 25 nm covered with native oxide was used.

The tensile properties of films, i.e. tensile strength, fracture strength and elongation at break, were measured using a universal tensile testing machine (Lloyd Instr. LR30K) with a 50 N static load cell. The film samples were cut into strips (30 mm \times 12 mm). The gauge length was 20 mm, and the extension rate was set at 2 mm/min.

Ultraviolet–visible (UV–Vis) measurements of the deposited films were carried out with a Perkin–Elmer spectrometer Lambda 35; for all samples, a neat quartz slide was used as reference. The optical absorbance was obtained on films of the same thickness (\sim 5 μm).

The current–voltage characteristic was performed by a computer controlled Keithley 4200 Source Measure Unit. The electrical conductivity of the samples was monitored, at room temperature, by applying a sweeping DC electric voltage from -40 V to 40 V between the electrodes. Forward and reverse scans were performed on each sample. The photocurrent was measured under AM1.5D 150 mW/cm² illumination from a Thermal Oriel solar simulator. Photoelectrical measurements were obtained for the films over several on/off light illumination cycles.

Results and Discussion

The scheme of our method is sketched in Fig. 1a: the yeast cells gain nutrient from the conversion of sucrose and grow with the division process in presence of sucrose/CNTs aqueous dispersion. Fig. 1b–d shows the appearance of the prepared samples. It can be seen that the fermented yeast presents a yellowish brown color similar to that of beer yeast. The fermentation assisted composite film exhibits a yellowish transparent color. Based on visual observation, the incorporation of CNTs without fermentation led to the formation of a black brittle film.

The effect of fermentation and CNT addition on the morphology of the films was investigated by AFM and the results are reported in Fig. 2. The shape of the cells was found to be spheroidal. In general, the fermentation process of the yeast decreases the average surface roughness from 0.32 μm to 0.22 μm (Fig. 2a,b) accordingly to the

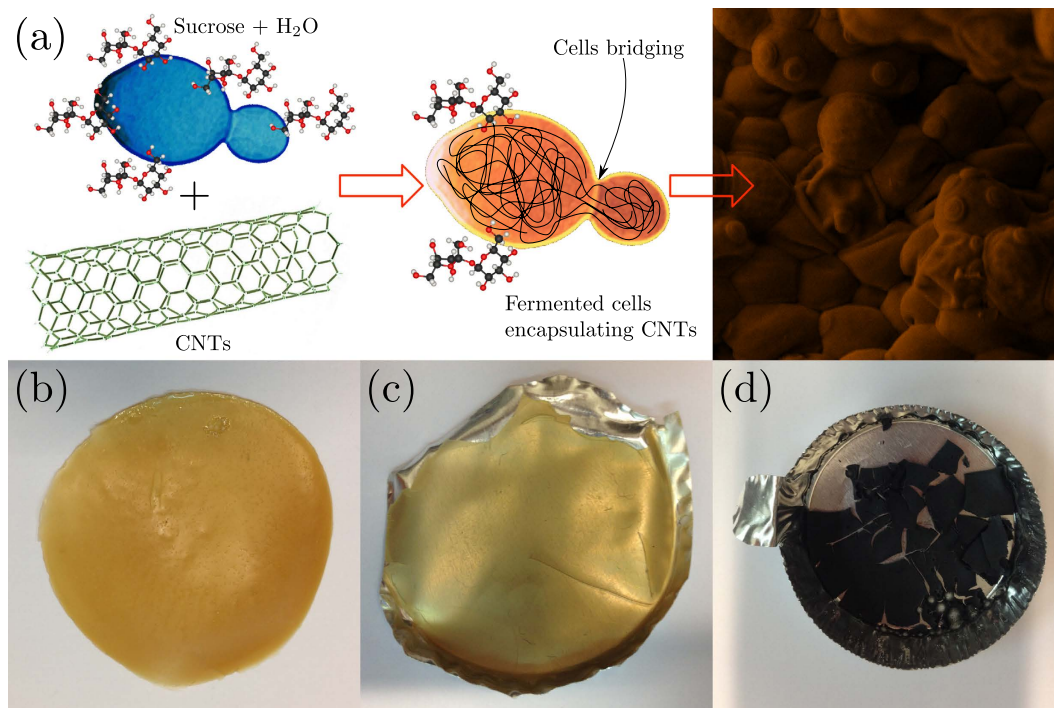


Figure 1. (a) Schematic representation and appearance of the fermentation-mediated assembly of carbon nanotubes and yeast cells. Photo images of (b) fermented yeast, (c) fermentation assisted yeast/CNTs film and (d) yeast/CNTs film without fermentation. From panel (c) it is clear that the underlying aluminum mold is well visible under white light.

yeast morphology reported elsewhere²¹. Representative images of the samples (see Fig. S2) show a morphology consisting of aggregated yeast cells with cell boundaries being the surface of the film obtained by fermentation of yeast with CNTs more homogeneous (i. e. lower protrusions). Under FESEM with an acceleration voltage of the electron beam set to 5 kV, it can be seen clearly that almost all the yeast cells after fermentation kept their spherical shape structures (Fig. S3) with a morphology comparable with those obtained by AFM. It can be seen also from FESEM analysis that yeast cells before fermentation appeared concave and burst. This can be attributed to hyper-osmotic shock by exposure in the high vacuum and under the electron beam of FESEM.

The strategy adopted for this study is based on the previous papers reporting that *Saccharomyces cerevisiae* multiplies with a process where a daughter cell is initiated as growth from the mother cell²². The round protrusion on the cell surface, visible in Fig. 3a, is a bud scar. The bud scar forms on the cell after the process of division has taken place. We exploit this growth process in order to verify if intracellular transport of carbon nanotubes takes place during this growth process as sketched in Fig. 1b. Stressing the composite sample by prolonged exposure under high vacuum condition and electron beam of FESEM, suggests that in the composite film obtained after fermentation the CNTs are bridging the yeast cells and are internalized by them (Fig. 3b,c). Such results are in agreement with those found by Zhou *et al.*²³ who showed that CNTs did not remain on the outside membrane but transverse the membranes and localized in the cell. Moreover the formation of CNT bundles between the cell walls reported below in Fig. 3d–f for the yeast/CNTs sample without fermentation, indicates that when the CNT are not digested by the yeast cell, they behave as defects making fragile and brittle the composite film as reported below.

Microscopy studies demonstrate that this approach can be regarded as the effective and versatile way to create hybrid micro-bubbles. After the FESEM inspection, we suggest that the bridging promoted by the internalized CNTs might result in additional mechanical properties to those composites according to the pull-out sketch reported in Fig. S4. In this regard tensile tests were performed and the stress-strain curves of the prepared samples are reported in Fig. 4a,b. The values of fracture strength (i. e. the stress at the ultimate strain), the elongation at break (i. e. the ultimate strain), the toughness (i.e. the area underlying the stress-strain curves) and elastic moduli are reported in Fig. S4. Generally, it was observed that the fracture strength, toughness and elastic modulus increase when CNTs were added to the yeast. The incorporation of CNTs before fermentation demonstrated to produce the highest variation in tensile properties of the composite film, being this effect highest for fracture strength; this led to extremely fragile film with the lowest elongation break value (see Figs 4b and S5). This result is consistent with our finding reported above based on visual appearance of the composite film on the mold as reported in Fig. 1. On the contrary, the composite film obtained after fermentation showed both a lower fracture strength and elastic modulus with a significantly higher elongation at break (Figs 4b and S5). The increase of elongation at break after fermentation, can be attributed to a decrease in film density and thus to an increase of the mean free volume of the film^{24,25}. The tensile test results can be rationalized assuming a pull out model^{26–28} representing the failure mechanisms of bridging nanotubes at cell interface (Fig. S4). The tensile strength of the

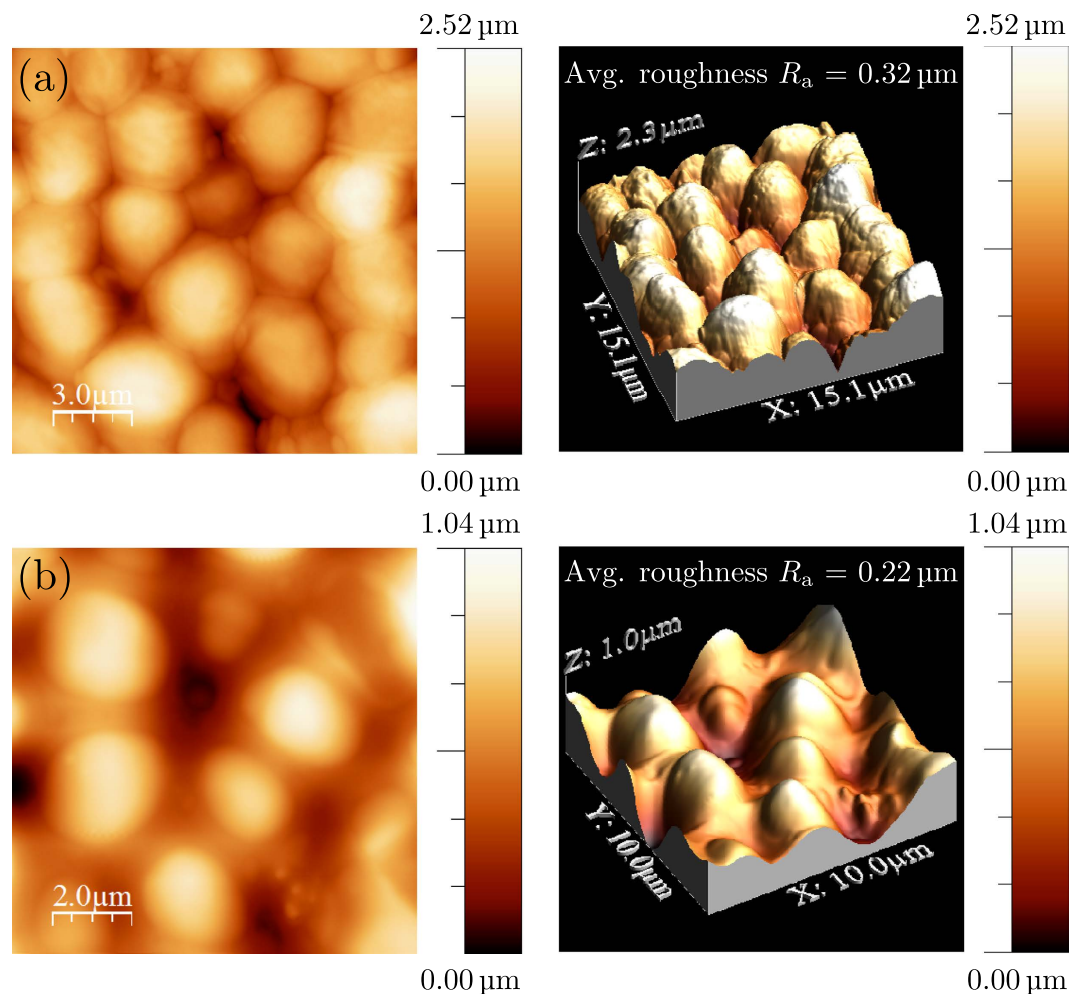


Figure 2. 2D and 3D AFM topography images of (a) yeast/CNTs and (b) fermented yeast/CNTs composite films.

composite, σ_f , can be expressed as the combination of the strength of the matrix constituted by the yeast, $\sigma_{f\text{-yeast}}$, and the pull out strength of CNTs, $\sigma_{f\text{-cntpo}}$, according to the following rule of mixture like equation:

$$\sigma_f = f\sigma_{f\text{-cntpo}} + (1 - f)\sigma_{f\text{-yeast}} \quad (1)$$

where f is the volume (areal) fraction of CNTs bridging the interface of the yeast cells. For $f=0$ we get the strength of the matrix (i.e. $\sigma_f = \sigma_{f\text{-yeast}}$). We estimate from FESEM (Fig. 3b and detail in Supplementary Fig. 3S) observation $f=0.0205$ and tensile strength values of 0.240 MPa and $0.297 \cdot 10^{-1}$ MPa for σ_f (i.e. the fermented composite) and for $\sigma_{f\text{-yeast}}$ (i.e. the fermented yeast), respectively, obtaining a $\sigma_{f\text{-cntpo}}$ of 10.29 MPa. From this calculation we found that the $\sigma_{f\text{-yeast}} \ll \sigma_{f\text{-cntpo}}$ indicating that the strength of the composite is governed by the adhesion energy between the bridging carbon nanotubes and the matrix.

Assuming that the applied stress is transferred to the nanotube via a nanotube–matrix interfacial shear mechanism at the molecular level, the pull out force of the CNTs, $F_{f\text{-cntpo}}$, is expressed as

$$F_{f\text{-cntpo}} = 2\pi r G'_{f\text{-cntpo}} \quad (2)$$

where the pull-out adhesion energy $G'_{f\text{-cntpo}}$ is calculated from the pull out strength and the radius r of the outer shell of CNTs as

$$G'_{f\text{-cntpo}} = \sigma_{f\text{-cntpo}} (r/2) \quad (3)$$

The determination of the pull out adhesion energy $G'_{f\text{-cntpo}}$ comes from the fact that $\sigma_{f\text{-cntpo}}$ is computed assuming a CNTs volume fraction f estimated as areal ratio, while the adhesion energy refers to the outer nanotube surface. Eq. 3 comes from the following balance between the pull-out force at the outer nanotube surface and its projection on the nanotube cross section area: $\pi r^2 \sigma_{f\text{-cntpo}} = 2\pi r G'_{f\text{-cntpo}}$. $G'_{f\text{-cntpo}} = \tau_{f\text{-cntpo}} \cdot l$, where l is the pull-out CNT anchorage length and $\tau_{f\text{-cntpo}}$ the pull-out shear strength between the CNT shell and the yeast, see supplementary Fig. S4.

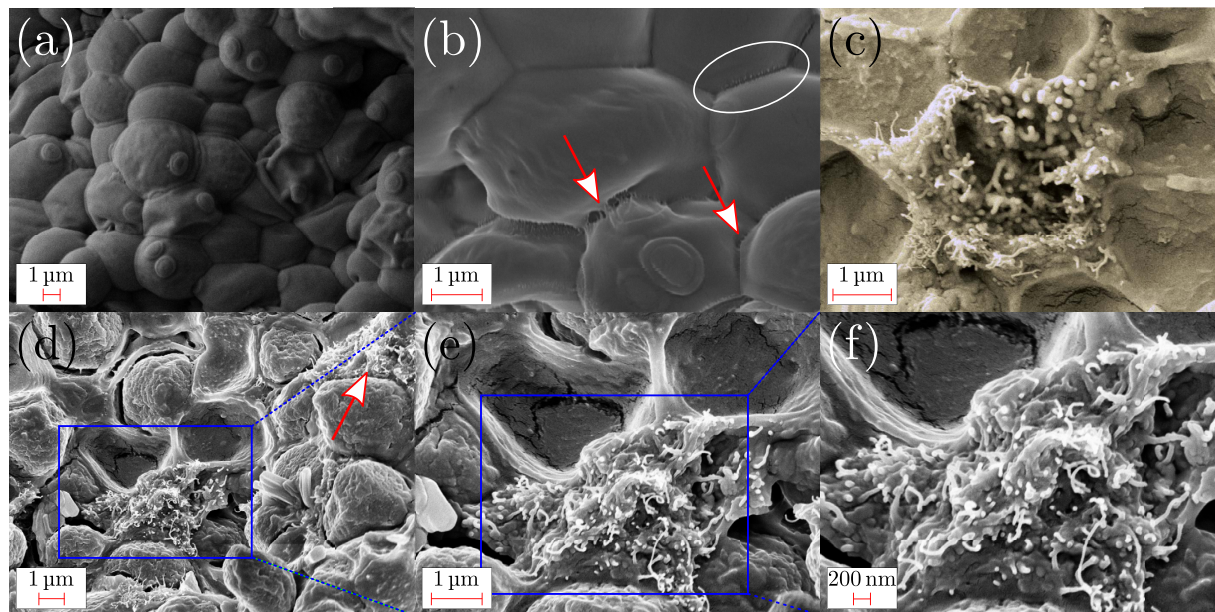


Figure 3. (a) FESEM image of *Saccharomyces cerevisiae*. (b) FESEM image showing CNTs bridging yeast cells. The arrows indicate the CNTs bridging the yeast cells. Encircled the interface at which the CNTs volume fraction f was estimated. (c) FESEM image of the cross section of the fermented yeast/CNTs film after prolonged exposure to FESEM where CNTs protruding from a broken yeast cell are visible. (d–f) FESEM images of the yeast/CNTs film without fermentation taken at different magnifications. The arrow indicates the CNT bundle while the square identifies the magnified region.

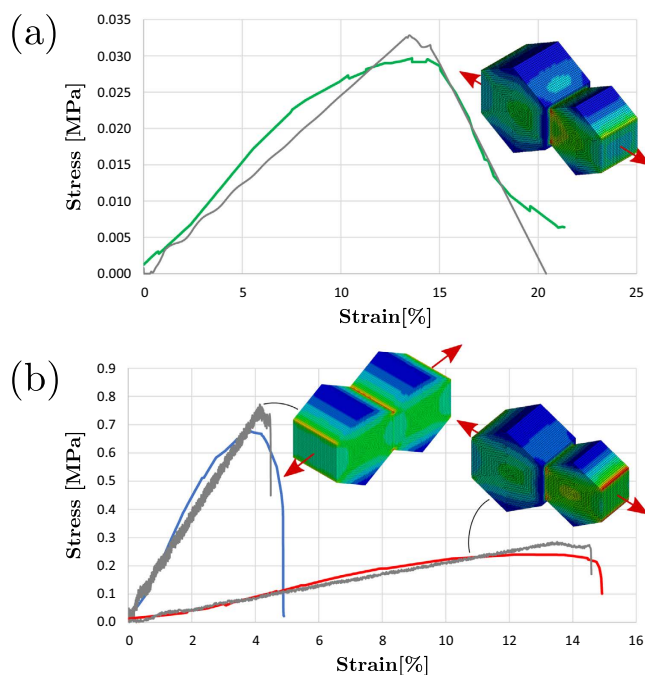


Figure 4. Stress-strain curves obtained from tensile tests on (a) fermented yeast sample (green curve) and (b) yeast/CNT composites prepared before fermentation (blue curve) and after fermentation (red curve), respectively. Note that for the fermented system two different cell type in terms of dimension and mechanical properties were adopted in order to take into account the mother-daughter cells systems. The comparisons with the result of FEM simulation of traction of a two-cell system are also reported.

Assuming a mean value for the nanotube radius of ~ 4.7 nm, the pull-out adhesion energy $G'_{f-cntpo}$ obtained is thus ~ 0.024 N/m.

A simple system of two cells before and after fermentation was modelled via finite element method (FEM) simulation in order to understand the effect of the incorporation of CNTs within the yeast. The image of Fig. 3b shows that the shape of the cells within the ensemble can be approximated as hexagonal prism. The dimension of the cell, mother and daughter, and their elastic properties as well, were taken from the work of Ahmad *et al.*²¹ They report for the mother cell a diameter $d_m = 5.565 \mu\text{m}$ and Young's modulus $E_m = 1.46 \text{ MPa}$, while for the daughter cell $d_d = 4.467 \mu\text{m}$ and Young's modulus $E_d = 1.10 \text{ MPa}$. The cell dimensions reported in this work are consistent with our estimations (see Fig. 2 and Supplementary Fig. S4). The hexagonal base of the prism was dimensioned in order to have an equivalent area of a circle of diameter d while the cell height is finally univocally determined from the cell volume reported elsewhere²¹. The cells are modeled with under-integrated solid elements with spurious mode stabilization and a linear-elastic material model²⁹. The load is applied as imposed displacements on the lateral face of the cells, in order to also get the post critical regime.

The interface between the two cells was modeled via a cohesive zone model (CZM) based contact²⁹ for which the overall adhesion energy, assumed of pure Mode I fracture, is a combination by a rule of mixture of the fracture energy of the pristine yeast interface and the adhesion energy of CNTs determined above with the pullout model. From Fig. 4a the experimental curve slope and fracture strength (see also Supplementary Fig. S5) are lower than the cell elastic parameters reported in literature^{21,30}, thus we deduce that the composite failure occurs due to interface rupture. The curve was then used to determine the yeast interface fracture energy that is estimated to be $G_{f\text{-yeast}} = 0.0193 \text{ N/m}$ assuming a cell diameter, and then distance from interfaces, of $5 \mu\text{m}$. This value has to be compared with the pull out energy of CNTs projected on the contact interface:

$$G_{f\text{-cntpo}} = G_{f\text{-cntpo}}' (l/r) \quad (4)$$

estimated to be 7.72 N/m where l is nanotube length, thus $1.5 \mu\text{m}$, assuming that on average the dissipation occurs over a length $l/2$ since not all nanotubes present an ideal anchorage $l/2$ - $l/2$ within the two cell membranes. Thus, the total adhesion energy of the composite interface is:

$$G_{f\text{-comp}} = fG_{f\text{-cntpo}} + (1 - f)G_{f\text{-yeast}} \quad (5)$$

where $G_{f\text{-comp}}$ is calculated from the traction displacement curves that result from the output of simulations of fraction of the two cell system (mother and daughter) in Fig. 4b and from which is possible to estimate the CNTs volume fraction f by minimizing the difference in energy release between experiments and simulations. The constitutive stress-opening displacement contact law for the two interface phases (generically i) are assumed to be bi-linear:

$$\sigma_i = \sigma_{f-i} \cdot (\delta_i/\delta_{f-i}) \quad \text{for } \sigma_i < \sigma_{f-i} \quad (6.a)$$

$$\sigma_i = \sigma_{f-i}(\delta_{u-i} - \delta_i)/(\delta_{u-i} - \delta_{f-i}) \quad \text{for } \sigma_i > \sigma_{f-i} \quad (6.b)$$

where δ_{f-i} is the crack opening corresponding to $\sigma_i = \sigma_{f-i}$ and δ_{u-i} is the ultimate crack opening at which $\sigma_i = 0$. In particular for the CNTs pull-out is assumed $\delta_{f\text{-cntpo}} = l/4$ and $\delta_{u\text{-cntpo}} = l/2$ according to the pull-out model presented above, and $\delta_{f\text{-yeast}} = 0.54 \mu\text{m}$ and $\delta_{u\text{-yeast}} = 0.88 \mu\text{m}$ for the yeast interface derived from the experimental curve of Fig. 4a.

We report a picture in Fig. S7 which shows the cohesive laws that derive from the Eqs. 6a,b displaying the defined quantities, $\delta_{f\text{-yeast}} = 0.54 \mu\text{m}$ and $\delta_{u\text{-yeast}} = 0.88 \mu\text{m}$, which were determined from the experimental data of Fig. 4a at the peak stress and ultimate strain points knowing the length of the sample and assuming that along the traction direction the overall specimen elongation is spread on a number of interfaces in series calculated as the total gauge length of 20 mm divided by the average apothem a between daughter and mother cell (fermented yeast) which results to be $4.33 \mu\text{m}$. This value was obtained from the cells dimensions reported above.

For the composite interfaces the rule of mixture is applied to both characteristic stresses and crack openings defined above, analogously to Eqs. 1 and 5. The failure of the interaction at each contact nodal point occurs when the current energy release, G , overcomes the critical value:

$$(G/G_{f\text{-comp}}) > 1 \quad (7)$$

Figure 4a,b shows the superposition of the FEM simulations on experimental curves. In particular Fig. 4a shows the results for mother-daughter cells in fermented yeast, while in Fig. 4b the cases of equal cells with CNTs before fermentation and mother-daughter cells with CNTs after fermentation were considered. The obtained results are in good agreement with experiments, following the variation in the peak tensile stress and ultimate strain. In particular the best match between the simulated and real curves occurs for volume fraction values of $f_{y+\text{CNTs}} = 0.071$ and $f_{y+\text{CNTs,ferm}} = 0.019$ for yeast/CNTs and fermented yeast/CNTs composites, respectively. Note that the latter value is comparable with the one estimated from the SEM images (Fig. 3b) and assumed in the pull-out model. This result is interpreted with a higher contact area of the yeast cell-cell interface due to the increase of the cell volume after fermentation. The consequent drop of the volume fraction of the nanotubes explains the lower failure stress and the higher failure strain observed for the composite film after fermentation. This suggests further investigations for understanding the interface transformation mechanism upon fermentation.

Once collected the morphology and the mechanical properties of the films, we next investigated the electrical characteristics of the composite films, and assess how they compare with the native films made of neat yeast. This

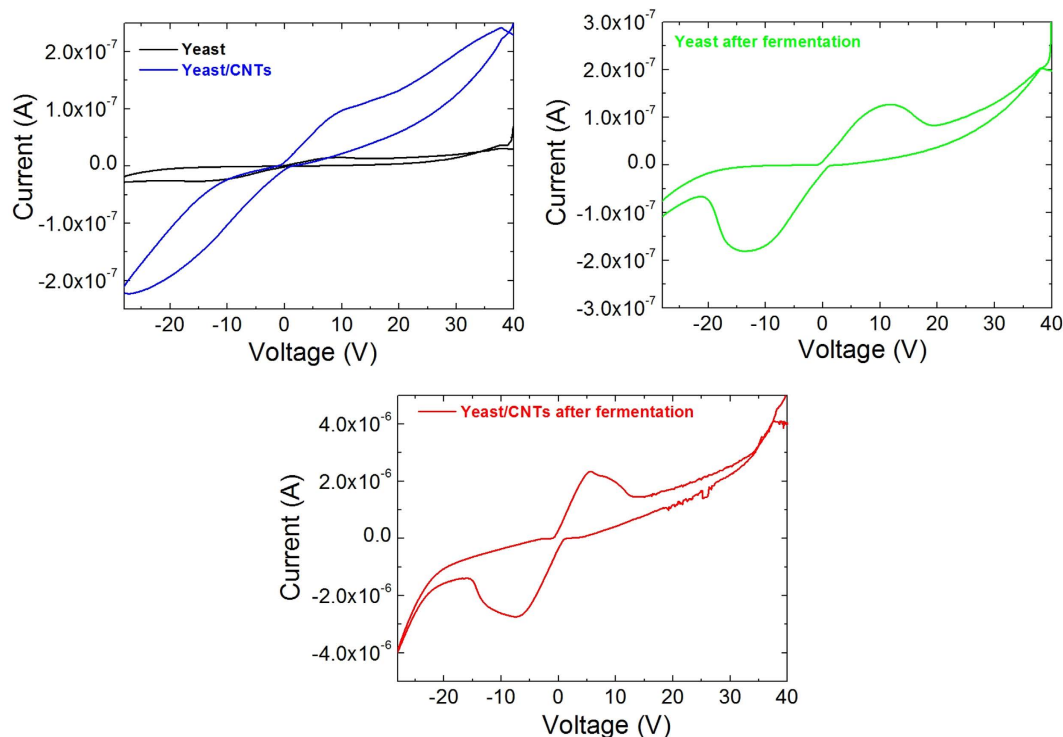


Figure 5. I-V characteristics of the prepared samples.

filled and bridged microenvironment could be a viable network for enhancing the electron transfer through the nanocomposite.

Thus we investigate whether there is any advantage to add CNTs to the yeast in terms of electrical conductivity. Current-voltage characteristic was thus used to measure the conductivity of yeast modified with CNTs as reported in Fig. 5. We observed that the increase in conductivity is more prominent with the CNTs. We further observed that the addition of sucrose to the neat yeast resulted in a better conductivity being this effect more pronounced for the fermented yeast/CNTs system. The source of this behavior is the bridging of CNTs of the yeast during the fermentation that improved the percolation pattern for electron transfer to the electrodes, via the conducting capabilities of CNTs. On the contrary the formation and confinement of isolated CNT bundles between the cell walls (Fig. 3d–f) results in an interruption of the percolation pattern leading to a lower conductivity for the yeast/CNTs sample without fermentation. The peaks observed for forward and reverse voltage scans for the fermented samples, could be attributable to the reduction and oxidation activity of the sucrose oxidase in the composite films³¹. Further investigations into electrochemical properties of such systems are underway.

Light absorbance in the UV–Vis range of the prepared samples are presented in Fig. 6a. In the visible range (350–800 nm), depending on both the CNTs incorporation and fermentation process, differences were obtained in terms of normalized optical absorbance. The absorbance value for the yeast film incorporating CNTs relative to neat yeast shows a significant increase. This difference may be associated with the presence of an extended network of aggregated CNTs that blocked passage of visible light in a more effective way. The fermentation of the yeast in presence of CNTs resulted in a decrease of the optical absorbance indicating a better dispersion and/or confinement of the CNT bundle, thus resulting in a better transparency of the composite film.

In previous studies food pigments extracted from yeast fermentations have been studied as a novel sensitizing dye for dye-sensitized solar cells^{32–34}. Moreover, Hildebrandt *et al.*³⁵ recorded photocurrents and photovoltages with yeast plasma membrane attached to a planar lipid membrane and to a polytetrafluoroethylene (Teflon) film, respectively. In Fig. 6b the photocurrents that evolve before and after light exposure on the prepared samples are reported. It is clear from the curves that neat yeast as well as fermented yeast showed a current increase under illumination. The spectral irradiance for a Xenon lamp between 400 and 500 nm under the AM1.5D standard condition is about 16.9%; the absorption spectrum of the films in this optical window (i. e. 416 nm from Fig. 6a) supports the observation that a photocurrent signal for the yeast extract has been recorded.

It is important to note that when the same experiment was conducted in the presence of CNTs, the baseline of the dark current signal increases, being this effect more pronounced for the composite film obtained after fermentation. The photo response, estimated as the relative variation between the dark and the light signals, increases from 16% to 26% when the fermented yeast was compared with the composite obtained after fermentation. The mechanism is related to a lower surface roughness of the composite film obtained by fermentation that promotes a more favorable charge transfer from the yeast cell to the CNTs. In particular, it is generally acknowledged that for a solution-processed active interface, in which an insulating/dielectric material (i.e. yeast in our case) is deposited from solution with a solution-processable conducting material (i.e. CNTs in our case) the interfacial mixing

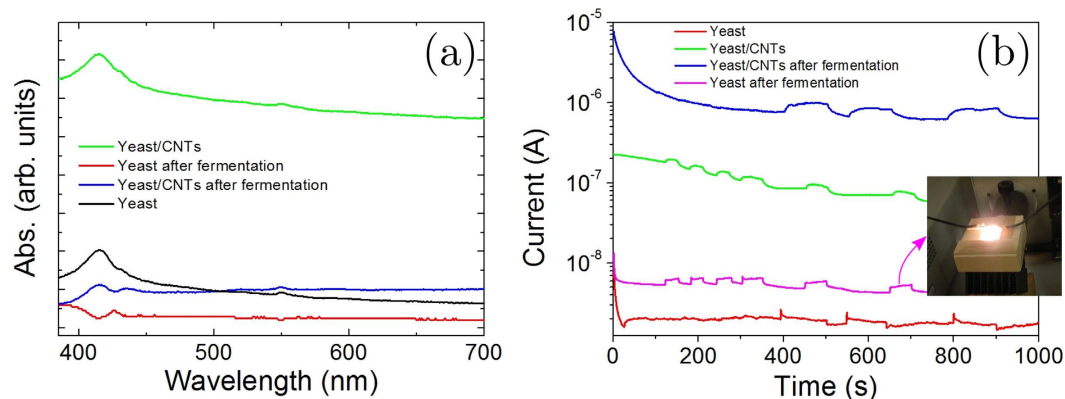


Figure 6. (a) UV-VIS spectra of the prepared films. (b) Photocurrent recorded on the prepared samples when the films were exposed to illumination cycles. The change of the current intensity represents the switching on and off of the solar simulator (i. e. 3, 6, 6 and 3 cycles for the yeast, yeast after fermentation, yeast/CNTs and yeast/CNTs after fermentation, respectively).

generally lead to increased interface roughness. The correlation between interface roughness and charge mobility in solution-processed films has been investigated by Sirringhaus *et al.*^{36,37}, who developed a modeling approach for conducting–dielectric interface demonstrating that the charge mobility was found to be constant for certain values of the interface roughness less than a critical threshold. For roughness exceeding this threshold, a very rapid drop of the mobility by orders of magnitude was observed.

Conclusions

In this work composite films were successfully prepared by the fermentation of beer yeast in presence of carbon nanotubes. The process produced marked enhancement in mechanical properties of the composite film. This change was ascribed to a bridging mechanism promoted by the living digestion of CNTs. The composite resulting from fermentation showed an improved electrical conductivity along with an enhanced photoconducting activity. In summary we demonstrated the development of novel structures by means of biogenesis without the post-synthesis addition of the inorganic components by physical or chemical methods. In this context the present work aims the development of future applications of such bionic materials, e.g. in the manufacture of physical smart objects with multifunctional properties, in the fields of functional tissues, energy storage and light harvesting applications.

References

- Newman, D. K. Microbiology - How bacteria respire minerals. *Science* **292**, 1312–1313 (2001).
- Lowenstam, H. A. Minerals formed by organisms. *Science* **211**, 1126–1131 (1981).
- Fortin, D. What biogenic minerals tell us. *Science* **303**, 1618–1619 (2004).
- Klemm, D., Schumann, D., Udhardt, U. & Marsch, S. Bacterial synthesized cellulose - artificial blood vessels for microsurgery. *Progress in Polymer Science* **26**, 1561–1603 (2001).
- Chen, Y., Daviet, L., Schalk, M., Siewers, V. & Nielsen, J. Establishing a platform cell factory through engineering of yeast acetyl-CoA metabolism. *Metab. Eng.* **15**, 48–54 (2013).
- Hong, K. K. & Nielsen, J. Metabolic engineering of *Saccharomyces cerevisiae*: a key cell factory platform for future biorefineries. *Cell. Mol. Life Sci.* **69**, 2671–2690 (2012).
- Runguphan, W. & Keasling, J. D. Metabolic engineering of *Saccharomyces cerevisiae* for production of fatty acid-derived biofuels and chemicals. *Metab. Eng.* **21**, 103–113 (2014).
- Everaert, E. P. J. M., van der Mei, H. C. & Busscher, H. J. Adhesion of yeasts and bacteria to fluoro-alkylsiloxane layers chemisorbed on silicone rubber. *Colloids and Surfaces B: Biointerfaces* **10**, 179–190 (1998).
- Neu, T. R., van der Mei, H. C., Busscher, H. J., Dijk, F. & Verkerke, G. J. Biodeterioration of medical-grade silicone-rubber used for voice prostheses - a SEM study. *Biomaterials* **14**, 459–464 (1993).
- Gugerli, R., Breguet, V., Stockar, U. & Marison, I. W. Immobilization as a tool to control fermentation in yeast-leavened refrigerated dough. *Food Hydrocolloids* **18**, 703–715 (2004).
- Jones, R. P. & Greeneld, P. F. Effect of carbon dioxide on yeast growth and fermentation. *Enzyme Microb. Technol.* **4**, 210–223 (1982).
- Zhang, Q. *et al.* Microorganism inspired hydrogels: hierarchical super/macro-porous structure, rapid swelling rate and high adsorption. *RSC Adv.* **4**, 32475–32481 (2014).
- Nout, M. J. R. *Encyclopedia of Food Safety* **3**, 168 (2014).
- Mitchell, D. N., Godwin, H. A. & Claudio, E. Nonparticle toxicity in *saccharomyces cerevisiae*: a comparative study using ag colloid, Ag colloid, and H₂AuCl₄·3H₂O in solution. *Nanoscape* **1**, 59–69 (2004).
- Kasemets, K., Ivask, A., Dubourguier, H.-C. & Kahru, A. Toxicity of nanoparticles of ZnO, CuO and TiO₂ to yeast *Saccharomyces cerevisiae*. *Toxicity in Vitro* **23**, 1116–1122 (2009).
- Kourkoutas, Y., Bekatorou, A., Banat, I. M., Marchant, R. & Koutinas, A. A. Immobilization technologies and support materials suitable in alcohol beverages production: a review. *Food Microbiol.* **21**, 377–397 (2004).
- Zhang, X. *et al.* Ultrastrong, stiff, and lightweight carbon-nanotube fibers. *Adv. Mater.* **19**, 4198 (2007).
- Karajanagi, S. S., Vertegel, A. A., Kane, R. S. & Dordick, J. S. Structure and function of enzymes adsorbed onto single-walled carbon nanotubes. *Langmuir* **20**, 11594–11599 (2004).
- Requena, J., Whittombury, J., Scarpa, A., Brinley Jr., J. F. & Mullins, L. J. Intracellular ionized calcium changes in squid giant-axons monitored by fura-2 and aequorin. *Ann. N. Y. Acad. Sci.* **639**, 112–125 (1991).

20. Watanabe, A. & Endoh, M. Relationship between the increase in Ca²⁺ transient and contractile force induced by angiotensin II in aequorin-loaded rabbit ventricular myocardium. *Cardiovasc. Res.* **37**, 524–531 (1998).
21. Ahmad, M. R., Nakajima, M., Kojima, S., Homma, M. & Fukuda, T. *In situ* single cell mechanics characterization of yeast cells using nanoneedles inside environmental SEM. *IEEE Transactions on Nanotechnology* **7**, 607–616 (2008).
22. Broach, J. R., Jones, E. W. & Pringle, J. R. *The Molecular and Cellular Biology of the Yeast Saccharomyces, Vol. 1. Genome Dynamics, Protein Synthesis, and Energetics*. Cold Spring Harbor, NY: Cold Spring Harbor Laboratory Press; (1991).
23. Zhou, F. *et al.* Periodic ZnO nanorod arrays defined by polystyrene microsphere self-assembled monolayers. *Nano Letters* **6**, 2375–2378 (2006).
24. Gontard, N., Duchez, C., Cuq, J. L. & Guilbert, S. Edible composites films of wheat gluten and lipids: water vapor permeability and other physical properties. *Int. Journal of Food Science Technol.* **29**, 39–50 (1994).
25. Yang, L. & Paulson, A. T. Effects of lipids on mechanical and moisture barrier properties of edible gellan film. *Food Research International* **33**, 571–578 (2000).
26. Pugno, N. The design of self-collapsed super-strong nanotube bundles. *J. of the Mechanics and Physics of Solids* **58**, 1397–1410 (2010).
27. Pugno, N. Mimicking nacre with super-nanotubes for producing optimized super-composites. *Nanotechnology* **17**, 5480–5484 (2006).
28. Shi, X., Peng, B., Pugno, N. M. & Gao, H. Stretch-induced softening of bending rigidity in graphene. *Applied Physics Letters* **100**, 191913–191915 (2012).
29. Belytschko, T., Liu, W.-K., Moran, B., Elkhodary, K. *Nonlinear Finite Element for Continua and Structures, 2nd Ed.*. John Wiley & Sons, Ltd.; (2014).
30. Hartmann, C. & Delgado, A. Numerical simulation of the mechanics of a yeast cell under high hydrostatic pressure. *Journal of Biomechanics* **37**, 977–978 (2004).
31. Wu, X. *et al.* Direct electron transfer of glucose oxidase immobilized in an ionic liquid reconstituted cellulose-carbon nanotube matrix. *Bioelectrochemistry* **77**, 64–68 (2009).
32. Zhang, G. *et al.* High efficiency and stable dye-sensitized solar cells with an organic chromophore featuring a binary pi-conjugated spacer. *Chem. Commun.* **16**, 2198–2200 (2009).
33. Hwang, S. *et al.* A highly efficient organic sensitizer for dye-sensitized solar cells. *Chem. Commun.* **14**, 4887–4889 (2007).
34. Ito, S. *et al.* High-efficiency organic-dye-sensitized solar cells controlled by nanocrystalline-TiO₂ electrode thickness. *Adv. Mater.* **18**, 1202 (2006).
35. Hildebrandt, V. *et al.* Bacteriorhodopsin expressed in schizosaccharomyces-pombe pumps protons through the plasma-membrane. *Proc. Natl. Acad. Sci. USA* **90**, 3578–3582 (1993).
36. Chua, L. L., Ho, P. K. H., Sirringhaus, H. & Friend R. H. Observation of field-effect transistor behavior at self-organized interfaces. *Adv. Mater.* **16**, 1609–1613 (2004).
37. Sirringhaus H. Device physics of solution-processed organic field-effect transistors. *Adv. Mater.* **17**, 2411–2425 (2005).

Acknowledgements

NMP is supported by the European Research Council (ERC StG Ideas 2011 BIHSNAM n. 279985, ERC PoC 2015 SILKENE nr. 693670) and by the European Commission under the Graphene Flagship (WP14 “Polymer nanocomposites”, n. 696656). SS acknowledges support from BIHSNAM.

Author Contributions

L.V. and N.M.P. had the idea, designed and supervised the entire research and analyzed the results. S.B.B. prepared the samples and performed the morphological, electrical and UV-Vis characterizations. M.T. and E.I. performed AFM analysis and scratch tests. S.S. performed FEM simulations. S.S. and N.M.P. rationalized the mechanical results. All authors have revised and given their approval to the final version of the manuscript.

Additional Information

Supplementary information accompanies this paper at <http://www.nature.com/srep>

Competing financial interests: The authors declare no competing financial interests.

How to cite this article: Valentini, L. *et al.* Fermentation based carbon nanotube multifunctional bionic composites. *Sci. Rep.* **6**, 27031; doi: 10.1038/srep27031 (2016).



This work is licensed under a Creative Commons Attribution 4.0 International License. The images or other third party material in this article are included in the article's Creative Commons license, unless indicated otherwise in the credit line; if the material is not included under the Creative Commons license, users will need to obtain permission from the license holder to reproduce the material. To view a copy of this license, visit <http://creativecommons.org/licenses/by/4.0/>