

RESEARCH

Open Access



Effects of substrates on N₂O emissions in an anaerobic ammonium oxidation (anammox) reactor

Yue Jin¹, Dunqiu Wang^{2,3} and Wenjie Zhang^{2,3*}

*Correspondence:

zhangwj_zhangwj@hotmail.com

² Guangxi Key Laboratory of Environmental Pollution Control Theory and Technology, Guilin University of Technology, Guilin 541004, China

Full list of author information is available at the end of the article

Abstract

N₂O emission in the anaerobic ammonium oxidation (anammox) process is of growing concern. In this study, effects of substrate concentrations on N₂O emissions were investigated in an anammox reactor. Extremely high N₂O emissions of 1.67 % were led by high NH₄-N concentrations. Results showed that N₂O emissions have a positive correlation with NH₄-N concentrations in the anammox reactor. Reducing NH₄-N concentrations by recycling pump resulted in decreasing N₂O emissions. In addition, further studies were performed to identify a key biological process that is contributed to N₂O emissions from the anammox reactor. Based on the results obtained, *Nitrosomonas*, which can oxidize ammonia to nitrite, was deemed as the main sources of N₂O emissions.

Keywords: Substrate concentrations, NH₄-N, Anammox, N₂O

Background

Nitrogen removal (NR) is an important component of wastewater treatment. Biological nitrogen removal (BNR) is often preferred to other non-biologic processes due to its high efficiency and energy conservation characteristics. Even so, the traditional BNR process has several disadvantages, such as excessive oxygen being consumed during the nitrification period and the requirement of additional organic carbon for denitrification. In 1995, the biological anaerobic ammonium oxidation (anammox) reaction was first reported in an up-flow reactor (Mulder et al. 1995). The anammox process operates under anaerobic conditions where nitrite is used as an electron acceptor by anammox bacteria for oxidation of ammonia to nitrogen gas (N₂) (Kuenen 2008). By using this new technology, only 50 % of the source ammonium needs to be oxidized to nitrite. This means that the oxygen requirement is reduced to about 75 % of the traditional BNR process. Anammox bacteria are autotrophic microorganisms, therefore, additional carbon input is also eliminated. The anammox process has demonstrated potential over the traditional BNR process, thus considerable research has been carried out from bench-scale to pilot-scale as the technology has proceeded to full-scale applications (Kartal et al. 2010).

N₂O is a potent greenhouse gas, whose warming effect is 200–300 times that of CO₂ and 4–12 times greater than CH₄. Many studies have shown that standard sewage denitrification

processes are a critical source of atmospheric N_2O (Kampschreur et al. 2009a; Wunderlin et al. 2013; Shaw and Koh 2012). In addition, research has generally shown that N_2 is the end product of the anammox process (Jetten et al. 2005); however, high N_2O emission from Anammox processes have also been reported (Kampschreur et al. 2009b). Thus, there is an urgent need to investigate the production of N_2O in the anammox process and develop methods of controlling and decreasing the greenhouse emissions from the anammox process.

In this study, an anammox reactor was used to study the effects of substrate concentrations on the emission of N_2O in an anammox process. The relationship between substrate concentrations and N_2O emissions was studied by changing the influent NH_4-N concentration. Furthermore, genetic analysis using the 16S rRNA gene was employed to characterize the microbial population of the anammox granules.

Results and discussion

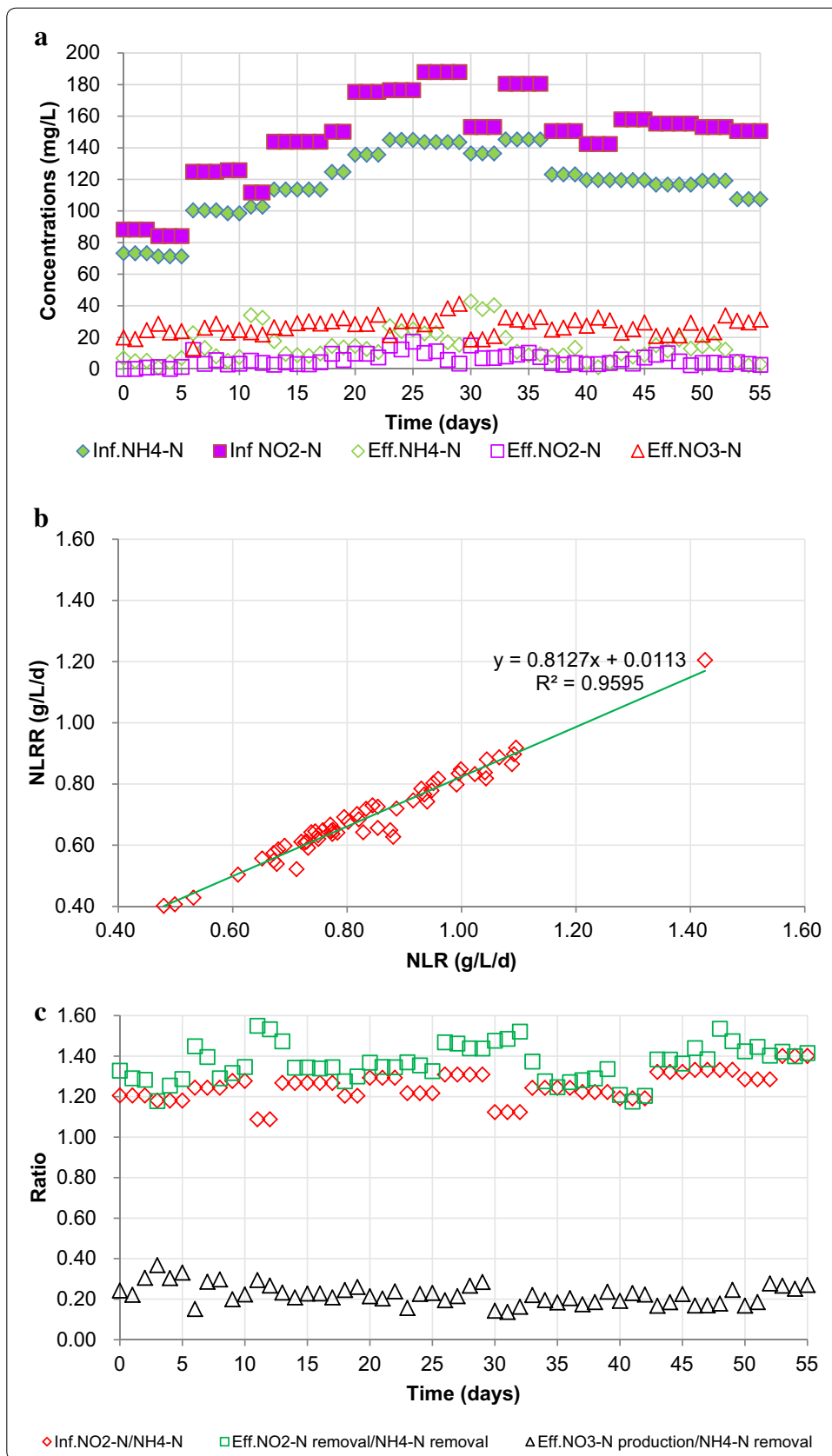
Reactor performance

The removal performance of ammonia and nitrite is shown in Fig. 1a, b. Whenever the effluent NO_2-N concentration fell below 10 mg L^{-1} , the nitrogen loading rate (NLR) was increased by adjusting the influent nitrogen concentration while maintaining a constant HRT of 8 h. During start-up period, with the influent NH_4-N and NO_2-N concentrations set at 73.2 and 88.3 mg L^{-1} , respectively, effluent NH_4-N and NO_2-N concentrations below 7 and 2 mg L^{-1} were obtained, with the TN removal rate $>80\%$. Subsequently, at a constant HRT, the influent NH_4-N and NO_2-N concentrations were further increased to 100.4 and 124.8 mg L^{-1} , respectively, and effluent NH_4-N and NO_2-N concentrations initially were a little higher, but both soon decreased to below 8 mg L^{-1} over a 3-day period. These results indicated that the seed anammox sludge could adapt quickly to changes in NLR. On day 24, the influent NH_4-N and NO_2-N concentrations were increased to 145.0 and 176.4 mg L^{-1} , respectively, which were the highest levels used in this study. Under these conditions, the effluent NH_4-N and NO_2-N concentrations were 27.0 and 14.8 mg L^{-1} , respectively. Accordingly, influent NH_4-N and NO_2-N concentrations were decreased to 120 and 150 mg L^{-1} , respectively, and effluent NH_4-N and NO_2-N concentrations were then maintained below 18.6 and 9.9 mg L^{-1} . Overall, the reactor could operate with a stable nitrogen removal rate of over 81 %.

Figure 1c shows the ratios of influent NO_2-N/NH_4-N , effluent NO_2-N removal/ NH_4-N removal, and effluent NO_3-N production/ NH_4-N removal. At the start-up period, influent NO_2-N/NH_4-N was set 1.2. Accordingly, effluent NO_2-N removal/ NH_4-N removal, and Effluent NO_3-N production/ NH_4-N removal were 1.3 and 0.3, respectively, which were close to values reported by others (Strous et al. 1998). In order to investigate the effect of influent NH_4-N on N_2O emission, on day 12 influent NO_2-N/NH_4-N was changed to 1.09. As a result, effluent NO_2-N removal/ NH_4-N removal increased to 1.55. Conversely, effluent NO_3-N production/ NH_4-N removal decreased to 0.2. The same results were once more affirmed on day 31. Denitrification was considered to be the main reason for the additional NO_2-N or NO_3-N removal.

(See figure on next page.)

Fig. 1 Reactor performance during the study. **a** Changes in nitrogen concentrations; **b** changes in NLR and NLR; **c** ratios of inf. NO_2-N/NH_4-N , eff. NO_2-N removal/ NH_4-N removal, and eff. NO_3-N production/ NH_4-N removal. *Inf.* influent, *Eff.* effluent



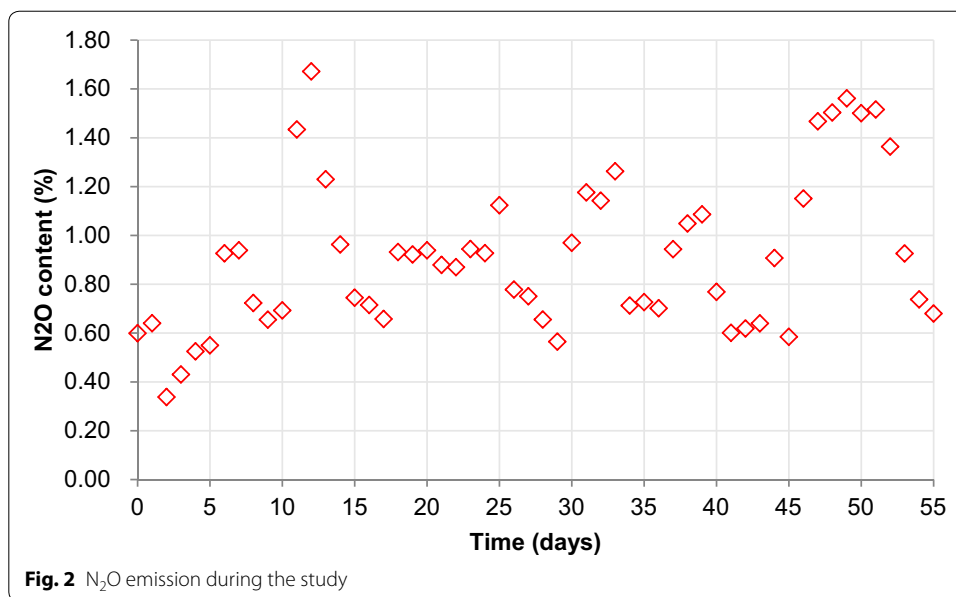


Fig. 2 N₂O emission during the study

N₂O emission

N₂O emissions over the course of the study are shown in Fig. 2. The conversion ratio of N₂O was calculated from the removed nitrogen. On the first day, about 0.6–0.64 % N₂O content was detected in the emission gas. On day 2, the influent pipe became blocked, thus only 0.34 % N₂O was detected in the emission gas. However, this value increased to 0.54 % over the following 3 days and by day 6 the N₂O concentration had reached 0.93 %, accompanied with a high effluent NH₄-N residual. On days 11–13 and 30–32, the effluent NH₄-N remained at 32–34 and 37–42 mg L⁻¹, respectively. Under these conditions, the N₂O emissions were found to be significantly higher than the values associated with low effluent NH₄-N concentrations. Over the course of the study, N₂O levels were determined to be 0.6–1.0 % in the off-gas.

Effects of influent NH₄-N, NO₂-N, NO₃-N and nitrogen removal rate on N₂O emission

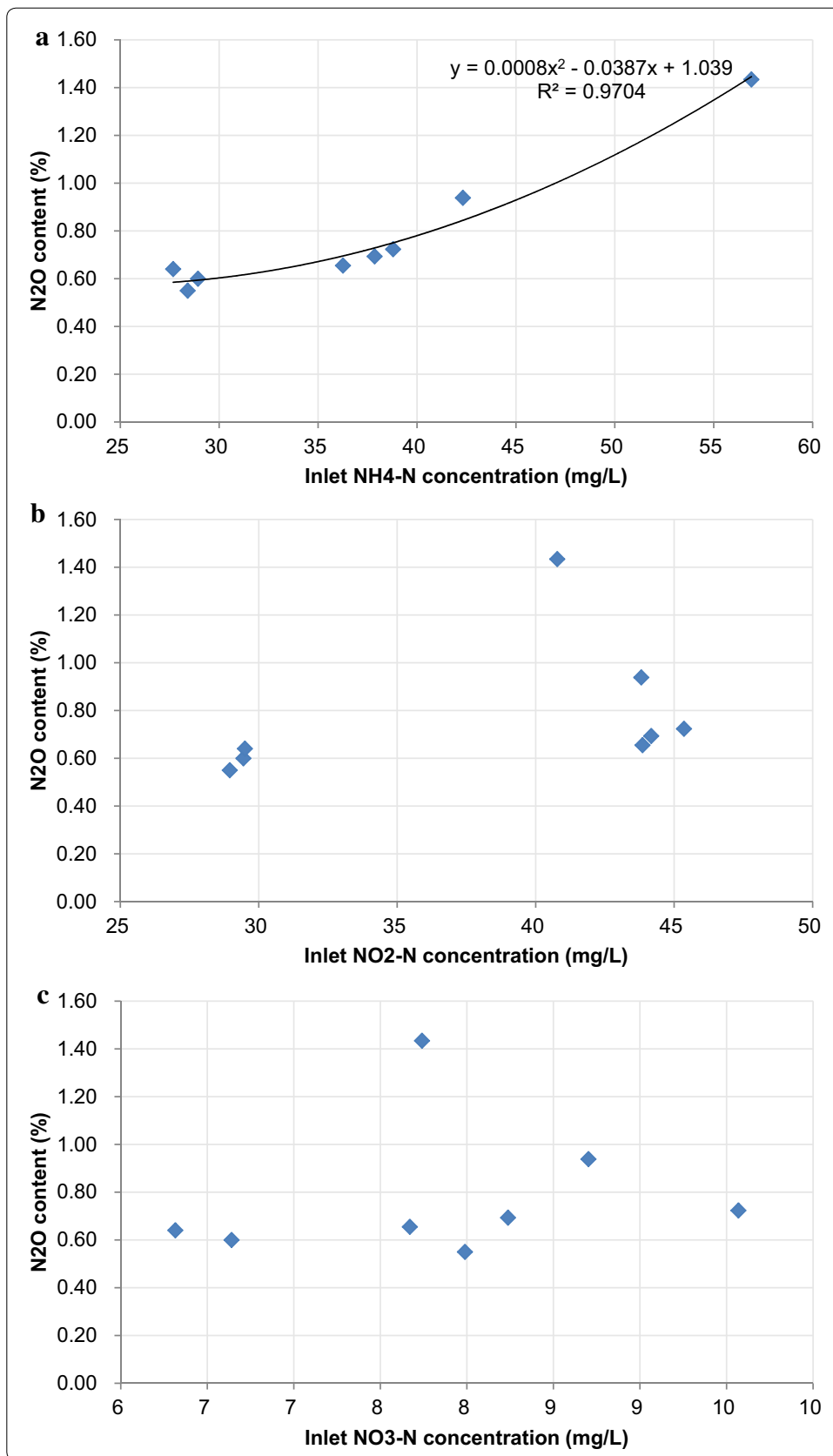
Effects of inlet NH₄-N, NO₂-N, NO₃-N and nitrogen removal rate on N₂O production are shown in Fig. 3. The EGSB reactor used in this study was operated with a high recycle rate. Thus, influent NH₄-N, NO₂-N and NO₃-N were calculated by using the following equation.

$$x = \frac{a + n \times b}{n + 1} \tag{1}$$

where x is the concentration of inlet NH₄-N, NO₂-N, NO₃-N, a is the influent concentration of NH₄-N, NO₂-N, NO₃-N, n is the ratio of recycle rate to influent flow rate, b is the effluent concentration of NH₄-N, NO₂-N, NO₃-N. According to the equation, inlet

(See figure on next page.)

Fig. 3 Effect of substrate on N₂O emission. **a** Relation of N₂O emission and inlet NH₄-N concentration; **b** relation of N₂O emission and inlet NO₂-N concentration; **c** relation of N₂O emission and inlet NO₃-N concentration



$\text{NH}_4\text{-N}$, $\text{NO}_2\text{-N}$ and $\text{NO}_3\text{-N}$ were determined by two factors: changing influent concentrations or different recycle rate. In order to observe the effects of inlet $\text{NH}_4\text{-N}$, $\text{NO}_2\text{-N}$ and $\text{NO}_3\text{-N}$, only the recycle rate was changed while the nitrogen loading rate was set with the same value $0.5 \text{ kg m}^{-3} \text{ day}^{-1}$ (Fig. 3a–c). Also, the effects of nitrogen removal rate were evaluated with the same influent nitrogen concentrations.

As shown in Fig. 3a, average N_2O content was 0.6 % with an inlet $\text{NH}_4\text{-N}$ concentration of 27–28 mg L^{-1} . Increasing the inlet $\text{NH}_4\text{-N}$ concentration from 36 to 57 mg L^{-1} , N_2O increased from 0.65 to 1.4 %. Inlet $\text{NH}_4\text{-N}$ concentration and N_2O emission were simulated according to the current data by the following equation with $P < 0.03$.

$$y = 0.0008x^2 - 0.0387x + 1.039 \quad (2)$$

where y is the N_2O emission, x is the inlet $\text{NH}_4\text{-N}$ concentration. In a word, increasing inlet $\text{NH}_4\text{-N}$ concentration tended to yield a higher N_2O concentration.

The influences of inlet $\text{NO}_2\text{-N}$ and $\text{NO}_3\text{-N}$ concentrations were also investigated during the study, though no obvious relationship was found with N_2O emissions (Fig. 3b, c).

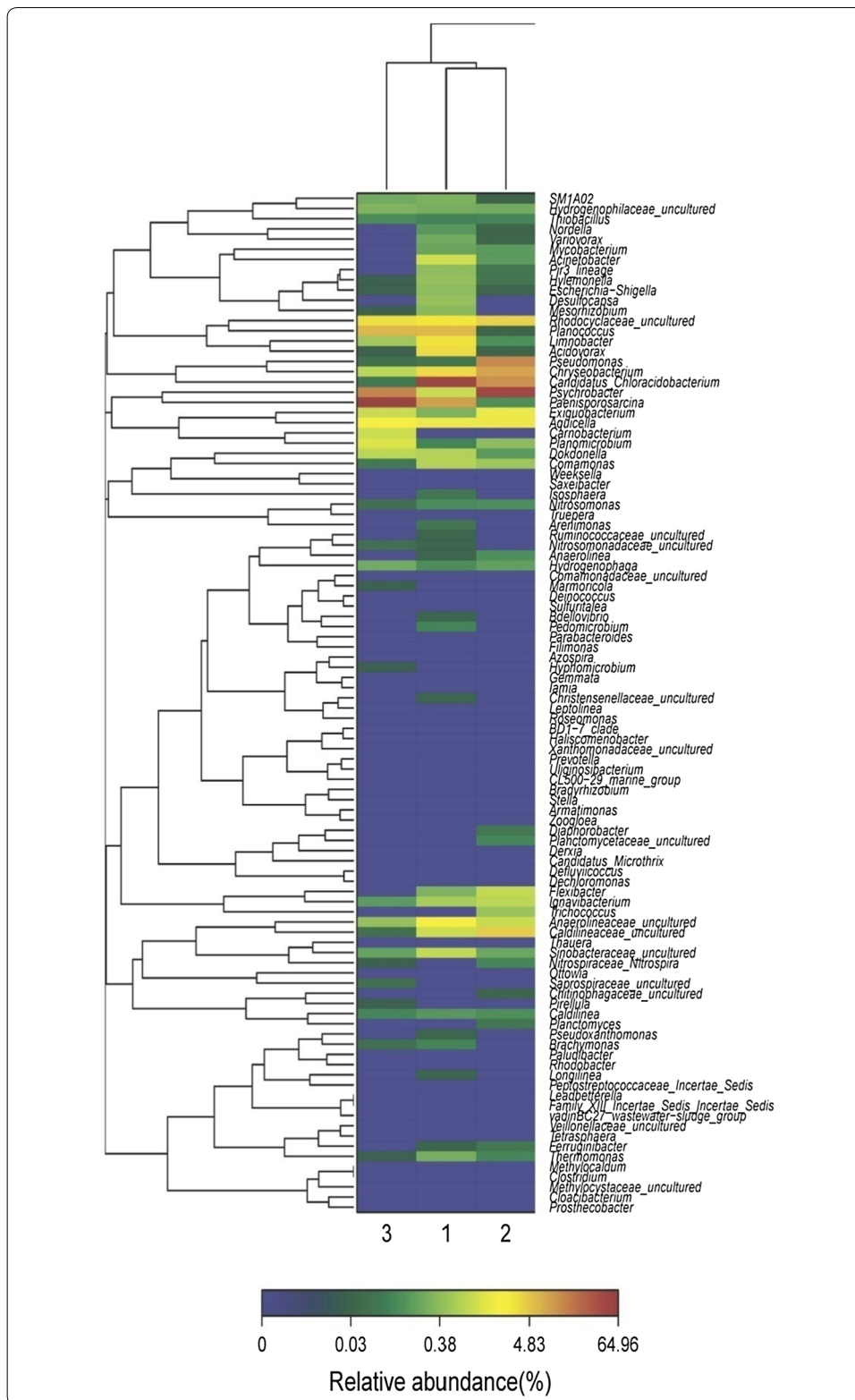
Bacteria community analysis

Hierarchical cluster analysis was used to identify the differences of three bacterial community structures (Fig. 4). The three samples were sampled from the same reactor, showing obvious similarity of community structure. *Nitrosomonas*, which oxidizes ammonia to nitrite, was detected in all the three samples. In the anammox reactor, it is difficult to keep dissolved oxygen at zero. Thus, the anammox reactor provides the conditions for the growth of *Nitrosomonas*. However, *Nitrosomonas* is known to produce N_2O under low oxygen conditions (7). This was supported by the relationship between *Nitrosomonas* abundance and N_2O emission (Fig. 5).

In this study, N_2O emissions were found to be higher than the reported values. Okabe et al. reported that a N_2O emission of only 0.05–0.23 % was detected with a nitrogen removal rate of 7.5–15 $\text{kg N m}^{-3} \text{ day}^{-1}$. However, the highest N_2O concentration of 1.67 % was quantified in this study, which is compared with other the results in Table 1. From Table 1, increasing nitrogen loading rates showed positive effect on decreasing N_2O concentrations. Longfei et al. (2015) also reported that the increase of nitrogen loading rate could reduce N_2O emission and they found it is more reasonable if compare the value of N_2O production per gram N removal (N_2O emission/nitrogen removal rate). Although higher nitrogen removal rate helps to reduce the footprint of the anammox system, it was difficult to maintain the stable running under high nitrogen removal rate due to floatation of anammox granules and pipe clogging. On the other hand, Kampschreur et al. also found high N_2O concentrations with 0.6 % in one full-scale anammox reactor. Thus, increasing NLR is effective in reducing N_2O emission, but N_2O emissions

(See figure on next page.)

Fig. 4 Hierarchical cluster analysis of 1, 2 and 3 bacterial communities. 1, N_2O emission 0.6 %, nitrogen removal rate $0.4 \text{ kg-N m}^{-3} \text{ day}^{-1}$; 2, day 36, N_2O emission 0.7 %, nitrogen removal rate $0.73 \text{ kg-N m}^{-3} \text{ day}^{-1}$; 3 day 50, N_2O emission 0.18 %, nitrogen removal rate $3 \text{ kg-N m}^{-3} \text{ day}^{-1}$. The y-axis is the clustering of the 100 most abundant OTUs (3 % distance) in reads. The OTUs were ordered by genus. Sample communities were clustered based on complete linkage method. The color intensity of scale indicates relative abundance of each OTU read. Relative abundance was defined as the number of sequences affiliated with that OTU divided by the total number of sequences per sample



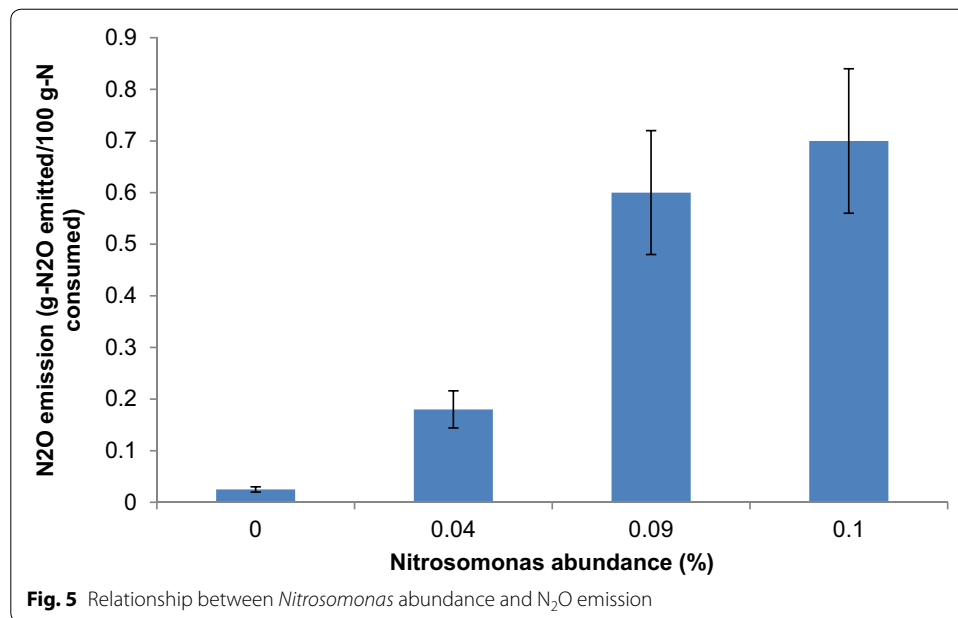


Table 1 Comparison of N₂O emission for different nitrogen loading rate in wastewater treatment

Reactor type	Reactor volume (L)	Removal rate (kg m ⁻³ day ⁻¹)	N ₂ O emission (%)	References
Granules-based	70,000	7.14	0.6	Kampschreur et al.
Granules-based	0.15	7.5–15	0.05–0.23	Okabe et al.
GAC-Granules-based	10	0.8	0.6–1.5	Present work

are inevitable in an anammox reactor. Reducing N₂O emission is still a concern for anammox applications.

NO₂-N and NO₃-N are the substrates for denitrifiers. It is supposed that N₂O is produced as an intermediate of incomplete heterotrophic denitrification due to low COD/N ratio (Okabe et al. 2011). However, no relationship was found between NO₂-N, NO₃-N and N₂O emission in this study. Thus, it is difficult to explain the increasing N₂O emission during this study.

Okabe et al. indicated that denitrification by putative heterotrophic denitrifiers present in the inner part of the granule was considered the most probable cause of N₂O emission from the anammox reactor. In this study, inlet NH₄-N showed clear relation to N₂O emission (Fig. 3). Also, *Nitrosomonas* abundance increased with N₂O emission (Fig. 5). As shown in Fig. 5, only 0.025 g-N₂O emitted/100 g-N consumed was observed without *Nitrosomonas*. And the denitrifiers were presumed to contribute the above N₂O emission. After that, *Nitrosomonas* abundance increased with N₂O emission. At last, 0.7 g-N₂O emitted/100 g-N consumed was observed, which was almost 30 times of the value without *Nitrosomonas*. The results got in this study showed that *Nitrosomonas* was the main cause of N₂O emission. *Nitrosomonas* competed with anammox bacteria for NH₄-N. Because anammox bacteria could not oxidize NH₄-N without NO₂-N, therefore, supplying enough NH₄-N is favorable for *Nitrosomonas*. While oxygen was always insufficient

for $\text{NH}_4\text{-N}$ oxidation in one anammox reactor, thus, N_2O produced due to NH_2OH oxidation (Wunderlin et al. 2013). The results of this study is partly consistent with the literature showing that NH_2OH oxidation by AOB was considered the most probable cause of N_2O production (0.6 % of the nitrogen load) in a full-scale Anammox reactor treating sludge reject water (Kampschreur et al. 2009b). Beyond that, this study could not exclude the possibility of N_2O emission by denitrifiers. Further study was needed to quantify N_2O emission contributed by denitrifiers and *Nitrosomonas* using real wastewater.

Conclusions

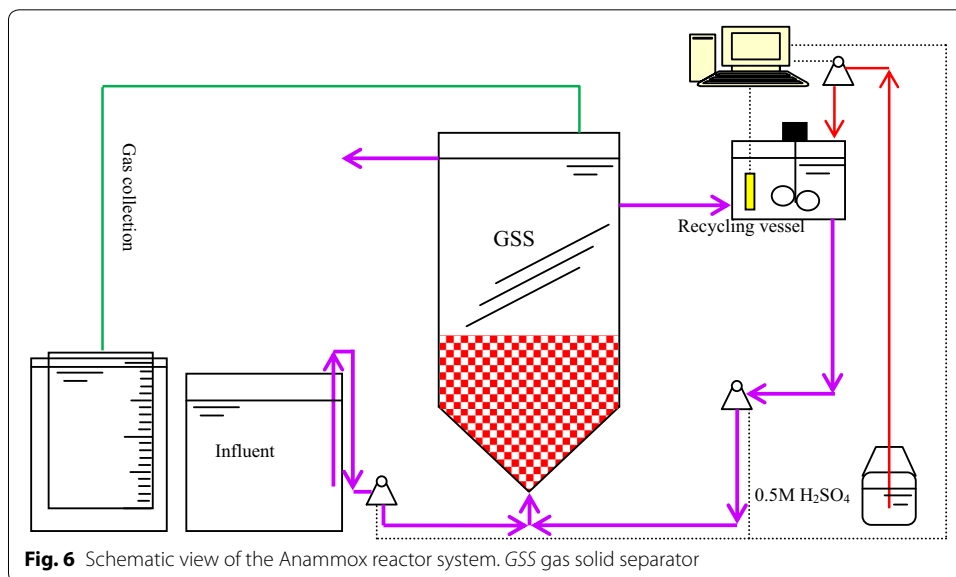
One anammox reactor was used to investigate the effect of substrate concentrations on N_2O emissions. The monitoring N_2O concentrations were determined as 0.6–1.0 % in the emission gas during this study. Increasing inlet $\text{NH}_4\text{-N}$ concentration from 36 to 57 mg L^{-1} , N_2O increased from 0.65 to 1.4 %. Reduced inlet $\text{NH}_4\text{-N}$ concentrations induced N_2O emission. The results got in this study suggested that in addition to denitrifiers, *Nitrosomonas* was also a significant cause of N_2O emissions.

Methods

Anammox reactor and substrate

The reactor had an inner diameter of 14 cm with a total liquid volume of 10 L including a reaction zone of 8 L and a settling zone of 2 L. The reactor was made of acrylic resin and had a water jacket for temperature control. Sampling ports were located at heights of 3, 17, 20 and 25 cm above the reactor bottom. Part of the effluent was collected in a 5-L container (with mixer and heater) for use as recycle (Fig. 6). The pH was adjusted by an online pH controller (TPH/T-10, Tengine, China) using 0.5 mol L^{-1} H_2SO_4 (Yue et al. 2015). The reactor was enclosed in a black-vinyl sheet to prevent growth of photosynthetic bacteria and algae.

The reactor was operated in up-flow mode, with influent introduced at the bottom using a peristaltic pump (BT100-2J, LongerPump, China). A recirculation pump



(BT600-2J, LongerPump, China) was used to dilute the influent (Fig. 6) with the treated wastewater in the 5-L recycle container.

The anammox seed sludge used in the reactor was taken from a pilot-scale anammox reactor (unpublished). The seed sludge was granule activated carbon (GAC)-based granules with settling velocity over 150 m h^{-1} (Wenjie et al. 2015). The initial seeding concentration (mass of mixed liquor suspended solids (MLSS) per liter) was set at 4 g MLSS L^{-1} .

The reactor was fed with synthetic wastewater with a nitrite to ammonium molar ratio of 1.0–1.2. The detailed composition of the influent is shown in Table 2. The influent storage tank was flushed with nitrogen gas to maintain DO under 0.5 mg L^{-1} , and Na_2SO_3 was added to a concentration of 40 mg L^{-1} (shown to be harmless to Anammox bacteria, Wenjie et al. 2014) to keep the DO level close to zero.

Analytical methods

$\text{NO}_2\text{-N}$ and $\text{NH}_4\text{-N}$ were measured by the colorimetric method according to Standard Methods (APHA 1995). Total nitrogen (TN) was determined by the persulfate method using the UV spectrophotometric screening method (APHA 1995) for quantification of TN as $\text{NO}_3\text{-N}$ (the oxidization product of the persulfate digestion). $\text{NO}_3\text{-N}$ (of the original sample) was determined by calculation of the difference of TN and the sum of $\text{NO}_2\text{-N}$ and $\text{NH}_4\text{-N}$. The pH was measured by using a pH meter (9010, Jenco, USA), and dissolved oxygen (DO) was measured by using a DO meter (6010, Jenco, USA).

Gas collection and analysis

Gas was collected through the GSS (Fig. 1) and the volume was measured using an inverted cylinder containing tap water with the pH lowered to 3 using 1-N H_2SO_4 . Gas analyses were performed by using a GC-112A gas chromatograph (INESA INSTRUMENT, China).

DNA extraction and high-throughput 16 s rRNA gene pyrosequencing

After 139 days of operation, the particle based granules were taken out from the Anammox reactor. A granular sludge sample was first ground with a pestle under liquid nitrogen. Meta-genomic DNA was extracted using the E.Z.N.A. Soil DNA Kit (OMEGA Biotec. D5625-01, USA) according to the manufacturer's instructions. Amplification of the 16S

Table 2 Composition of synthetic wastewater

Composition	Concentration (mg L^{-1})
$(\text{NH}_4)_2\text{SO}_4$, NaNO_2 (as mg N L^{-1})	200–1000
KHCO_3	1000
KH_2PO_4	20–1300
$\text{CaCl}_2 \cdot 2\text{H}_2\text{O}$	100
$\text{MgSO}_4 \cdot 7\text{H}_2\text{O}$	200
$\text{Na}_2\text{S}_2\text{O}_3$	24.81
Trace element solution 1 (g L^{-1}): $\text{FeSO}_4 \cdot 7\text{H}_2\text{O}$ 10, $\text{C}_{10}\text{H}_{14}\text{N}_2\text{Na}_2\text{O}_3$ 5.6	1 mL L^{-1}
Trace element solution 2 (g L^{-1}): $\text{MnCl}_2 \cdot 4\text{H}_2\text{O}$ 0.352, $\text{CoCl}_2 \cdot 6\text{H}_2\text{O}$ 0.096, $\text{NiCl}_2 \cdot 6\text{H}_2\text{O}$ 0.08, $\text{CuSO}_4 \cdot 5\text{H}_2\text{O}$ 0.1, $\text{ZnSO}_4 \cdot 7\text{H}_2\text{O}$ 0.172, $\text{NaSeO}_4 \cdot 10\text{H}_2\text{O}$ 0.105, $\text{NaMoO}_4 \cdot 2\text{H}_2\text{O}$ 0.11, $\text{C}_{10}\text{H}_{14}\text{N}_2\text{Na}_2\text{O}_3$ 5.0	1 mL L^{-1}

rRNA gene was performed using primers 27F (forward primer: 5'-AGAGTTTGATCCTG-GCTCAG-3') and 533R (reverse primer: 5'-TTACCGCGGCTGCTGGCAC-3'). PCR was carried out according to the following thermocycling parameters: 120 s initial denaturation at 95 °C, 25 cycles of 30 s at 95 °C, 30 s at 55 °C, 30 s at 72 °C, 5 min final elongation at 72 °C, 10 °C until halted by user. Duplicate PCR products were pooled and purified using the AXYGEN gel extraction kit (Axygen, USA) (Feng et al. 2012).

Pyrosequencing was carried out by a 454 Life Sciences Genome Sequencer FLX Titanium instrument (Roche). Sequences were clustered into operational taxonomic units (OTUs) by setting a 0.03 distance limit (equivalent to 97 % similarity) using the MOTHUR program.

Authors' contributions

Yue Jin carried out the molecular genetic studies, participated in the sequence alignment and drafted the manuscript. Dunqiu Wang participated in the design of the study and performed the statistical analysis. Wenjie Zhang conceived of the study, and participated in its design and coordination and helped to draft the manuscript. All authors read and approved the final manuscript.

Author details

¹ Guangxi Key Laboratory of New Energy and Building Energy Saving, College of Civil Engineering and Architecture, Guilin University of Technology, 12, Jiangan Road, Guilin 541004, China. ² Guangxi Key Laboratory of Environmental Pollution Control Theory and Technology, Guilin University of Technology, Guilin 541004, China. ³ Guangxi Collaborative Innovation Center for Water Pollution Control and Water Safety in Karst Area, Guilin University of Technology, Guilin 541004, China.

Acknowledgements

This research was supported by the National Natural Science Foundation of China (No. 51108108), Guangxi Natural Science Foundation (2013GXNSFCA019018; 2014 GXNSFBA118265), the project of high level innovation team and outstanding scholar in Guangxi colleges and universities.

Competing interests

The author(s) declare that they have no competing interests.

Received: 24 October 2015 Accepted: 23 May 2016

Published online: 16 June 2016

References

- APHA (1995) Standard method for the examination of water and wastewater, 19th edn. American Public Health Association, Washington, D.C.
- Feng Q, Wang Y, Wang T, Zheng H, Chu L, Zhang C, Chen H, Kong X, Xing X (2012) Effects of packing rates of cubic-shaped polyurethane foam carriers on the microbial community and the removal of organics and nitrogen in moving bed biofilm reactors. *Bioresour Technol* 117:201–207
- Jetten MSM, Cirpus I, Kartal B, van Niftrik LAMP, van de Pas-Schoonen KT, Slijkers O, Haaijer S, van der Star W, Schmid M, van de Vossenberg J, Schmidt I, Harhangi H, van Loosdrecht M, Gijs Kuenen J, Op den Camp H, Strous M (2005) 1994–2004: 10 years of research on the anaerobic oxidation of ammonium. *Biochem Soc Trans* 33:119–123
- Kampschreur MJ, Temmink H, Kleerebezem R, Jetten MS, van Loosdrecht M (2009a) Nitrous oxide emission during wastewater treatment. *Water Res* 43:4093–4103
- Kampschreur MJ, Poldermans R, Kleerebezem R, van der Star WRL, Haarhuis R, Abma WR, Jetten MSM, van Loosdrecht MCM (2009b) Emission of nitrous oxide and nitric oxide from a full-scale single-stage nitrification–anammox reactor. *Water Sci Technol* 60:3211–3217
- Kartal B, Kuenen JG, Van Loosdrecht MCM (2010) Sewage treatment with anammox. *Science* 328:702–703
- Kuenen JG (2008) Anammox bacteria: from discovery to application. *Nat Rev Microbiol* 6:320–326
- Longfei R, Shuang L, Huu HN, Wenshan G, Shouqing N, Cui L, Yuankun Z, Daisuke H (2015) Enhancement of anammox performance in a novel non-woven fabric membrane bioreactor (nMBR). *RSC Adv* 5:86875–86884
- Mulder A, Van de Graaf AA, Robertson LA, Kuenen JG (1995) Anaerobic ammonium oxidation discovered in a denitrifying fluidized bed reactor. *FEMS Microbiol Ecol* 16:177–184
- Okabe S, Oshiki M, Takahashi Y, Satoh H (2011) N₂O emission from a partial nitrification–anammox process and identification of a key biological process of N₂O emission from anammox granules. *Water Res* 45:6461–6470
- Shaw AR, Koh SH (2012) Gaseous emissions from wastewater facilities. *Water Environ Res* 84:1325–1331
- Strous M, Heijnen JJ, Kuenen JG, Jetten MSM (1998) The sequencing batch reactor as a powerful tool for the study of slowly growing anaerobic ammonium-oxidizing microorganisms. *Microbiol Biotechnol* 50:589–596
- Wenjie Z, Yuanyuan Z, Liang L, Xuehong Z, Yue J (2014) Fast start-up of expanded granular sludge bed (EGSB) reactor using stored Anammox sludge. *Water Sci Technol* 69:1469–1474

- Wenjie Z, Huaqin W, Joseph DR, Yue J (2015) Granular activated carbon as nucleus for formation of Anammox granules in an expanded granular-sludge-bed reactor. *Global NEST J* 17:508–514
- Wunderlin P, Siegrist H, Joss A (2013) Online N₂O measurement: the next standard for controlling biological ammonia oxidation? *Environ Sci Technol* 47:9567–9568
- Yue J, Dunqiu W, Wenjie Z (2015) Use of bamboo charcoal reduced the cultivated anammox seed sludge dosage during the start-up period. *Desalin Water Treat*. doi:[10.1080/19443994.2015.1107510](https://doi.org/10.1080/19443994.2015.1107510)

Submit your manuscript to a SpringerOpen[®] journal and benefit from:

- ▶ Convenient online submission
- ▶ Rigorous peer review
- ▶ Immediate publication on acceptance
- ▶ Open access: articles freely available online
- ▶ High visibility within the field
- ▶ Retaining the copyright to your article

Submit your next manuscript at ▶ springeropen.com
