



**Cite this article:** Scally A. 2016 Mutation rates and the evolution of germline structure. *Phil. Trans. R. Soc. B* **371**: 20150137. <http://dx.doi.org/10.1098/rstb.2015.0137>

Accepted: 13 January 2016

One contribution of 15 to a discussion meeting issue 'Dating species divergences using rocks and clocks'.

**Subject Areas:**

genetics, evolution, genomics

**Keywords:**

germline, mutation rate, human evolution

**Author for correspondence:**

Aylwyn Scally

e-mail: [aos21@cam.ac.uk](mailto:aos21@cam.ac.uk)

# Mutation rates and the evolution of germline structure

Aylwyn Scally

Department of Genetics, University of Cambridge, Cambridge CB2 3EH, UK

AS, 0000-0002-0807-1167

Genome sequencing studies of de novo mutations in humans have revealed surprising incongruities in our understanding of human germline mutation. In particular, the mutation rate observed in modern humans is substantially lower than that estimated from calibration against the fossil record, and the paternal age effect in mutations transmitted to offspring is much weaker than expected from our long-standing model of spermatogenesis. I consider possible explanations for these discrepancies, including evolutionary changes in life-history parameters such as generation time and the age of puberty, a possible contribution from undetected post-zygotic mutations early in embryo development, and changes in cellular mutation processes at different stages of the germline. I suggest a revised model of stem-cell state transitions during spermatogenesis, in which 'dark' gonial stem cells play a more active role than hitherto envisaged, with a long cycle time undetected in experimental observations. More generally, I argue that the mutation rate and its evolution depend intimately on the structure of the germline in humans and other primates.

This article is part of the themed issue 'Dating species divergences using rocks and clocks'.

## 1. The germline mutation rate

All evolutionary processes depend on the flow of genetic information from one generation to the next, and as with any signal, errors in transmission can occur. The rate at which this happens is called the germline mutation rate, and is of central importance to evolutionary genetics. Not only is it key to interpreting genomic differences between individuals and populations, it also determines the timescale by which we can relate genetic data to other evidence for the evolutionary past. This relationship is not straightforward, however, because although in evolutionary genetic theory the mutation rate often plays the role of a fundamental constant, in truth it evolves like any other trait and can differ by orders of magnitude between species [1].

Estimates of the mutation rate in humans have varied according to the data and methods available. The first were made even before the nature of the DNA molecule had been established [2,3], and so were indirect and restricted to mutations causing phenotypic differences, such as at dominant disease loci. Subsequent estimates were based on phylogenetic comparisons between species, with divergence times drawn from fossil evidence. More recently, developments in genome sequencing technology have enabled mutation rate estimates based on counting de novo mutations, comparing closely related individuals in parent-offspring trios or larger pedigrees (reviewed in [4,5]).

In principle, phylogenetic and de novo estimates represent different aspects of the same approach, counting genetic differences accumulated over a number of generations. For evolutionary analyses, a de novo estimate seems at first glance more attractive because it avoids the circularity implicit in phylogenetic calibration, particularly when comparing genetic data against fossil dates. However, the first such estimates in human trios yielded a value of  $0.5 \times 10^{-9} \text{ bp}^{-1} \text{ yr}^{-1}$  for

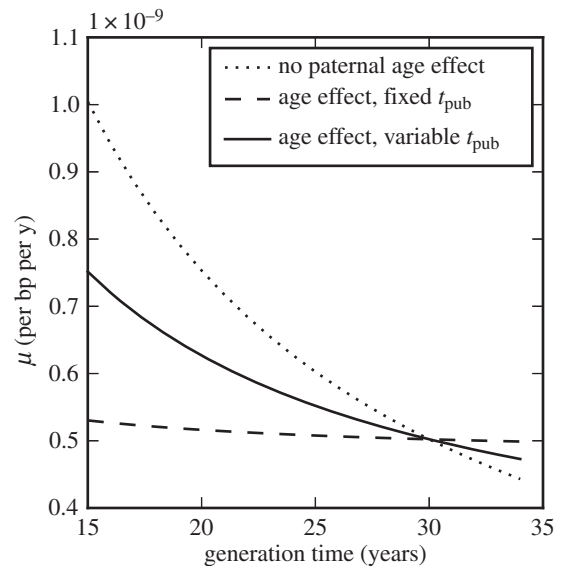
single-nucleotide mutations, almost half the established phylogenetic rate, and thus implying a substantial lengthening of the evolutionary timescale if applied across all hominoid lineages [4]. While such a revision may be warranted in places, particularly for recent events within the genus *Homo* and the speciation of the African great apes, a longer timescale for older events is difficult to reconcile with the primate fossil record. For example, with this rate the 4.7% sequence divergence between apes and old-world monkeys [6] implies a genetic divergence time 47 Ma, and hence speciation approximately 40 Ma (assuming a reasonably large ancestral population), whereas the fossil record seems consistent with a divergence no more than 25–30 Ma [7].

Several explanations for this disagreement have been proposed, including the possibility that de novo estimates have failed to correctly quantify false positives or inaccessible regions of the genome [5]. However, while there are caveats to any approach, more than a dozen subsequent de novo studies have consistently produced similarly low values [5]. This includes one study based on more distantly related individuals [8], and while other forthcoming pedigree-based estimates may lead to some adjustment (for reasons discussed below), it seems unlikely that methodological considerations alone will close the gap between phylogenetic and de novo-estimated rates. Furthermore, additional evidence supporting a low germline mutation rate in modern humans comes from comparisons of ancient and modern DNA [9], and a lower rate is arguably more compatible with archaeological evidence for the timing of recent events such as the divergence of Native American and East Asian populations [10].

This paper explores three alternative explanations for the rate discrepancy and discusses factors underlying the germline mutation rate which may have led to its evolution on shorter or longer timescales. Firstly, I discuss the possibility that mutation rates may have slowed due to life-history changes during the last 20 Myr of hominoid evolution. Secondly, I consider whether aspects of the cellular genealogy of the germline might have led to a substantial number of mutations going undetected in trio sequencing experiments. Finally, I discuss how stem-cell processes in spermatogenesis affect the germline mutation rate and how our model for this might be reconciled with recent experimental observations.

## 2. Life-history changes during hominoid evolution

One possible explanation for the discrepancy between mutation rate estimates is that rates themselves may have changed during hominoid evolution. Since they are observed to differ between species across large evolutionary distances, a slowdown on this scale is not implausible *a priori* [11,12]. Indeed, great apes have evolved in several ways over this time, notably increasing in body mass [13]. This itself leads to an explanation for the putative slowdown based on a change in generation time (defined as the average time from zygote to zygote along a genetic lineage), since life-history parameters such as generation time scale with body mass across a wide range of mammal species [14,15]. Consider a simplistic model where the per-generation mutation rate  $\mu_{\text{gen}}$  is constant and the mutation rate per year  $\mu$  scales inversely with generation time:  $\mu = \mu_{\text{gen}}/t_{\text{gen}}$ . Then an increase in generation time by a factor of almost two could account for the necessary reduction in



**Figure 1.** Models of human mutation rate slowdown with changing life-history parameters. Dotted line: simple scaling of mutation rate with generation time; dashed line: including a paternal age effect but with fixed age of puberty; solid line: including a paternal age effect and with age of puberty scaling with generation time, assuming  $t_{\text{pub}} = 14$  yr when  $t_{\text{gen}} = 30$  yr. Overall rates per basepair are scaled to be  $0.5 \times 10^{-9} \text{ bp}^{-1} \text{ yr}^{-1}$  when  $t_{\text{gen}} = 30$  yr.

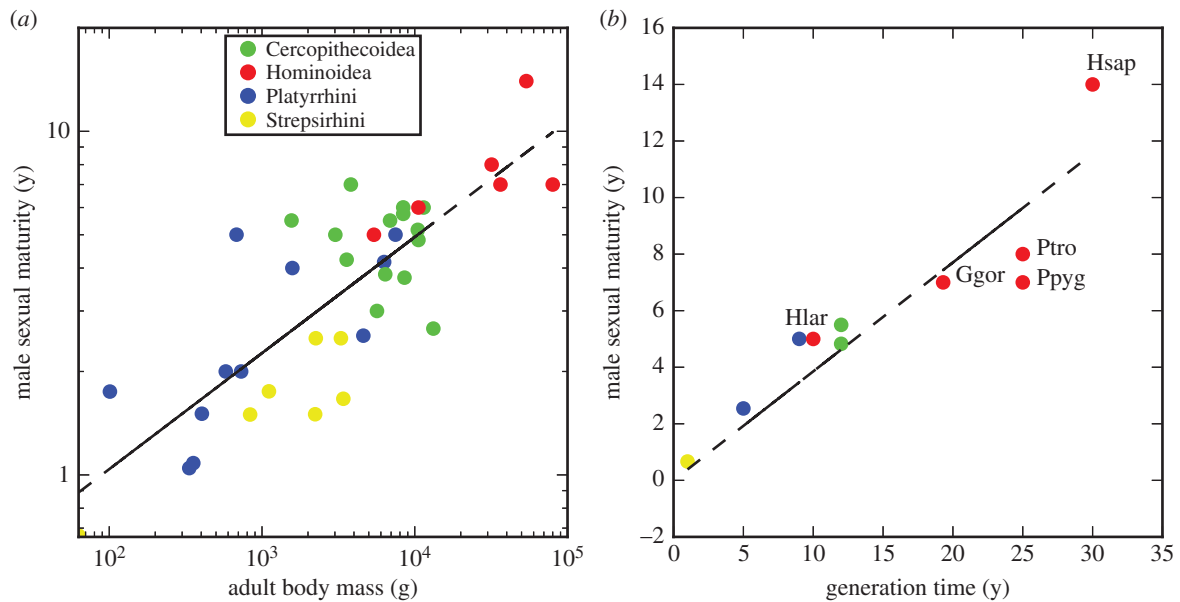
yearly rate from approximately  $1 \times 10^{-9} \text{ bp}^{-1} \text{ yr}^{-1}$  in the past to  $0.5 \times 10^{-9} \text{ bp}^{-1} \text{ yr}^{-1}$  today (figure 1).

However, as noted by Ségure *et al.* [5], this model is too simplistic, for in supposing that the number of mutations per generation is independent of  $t_{\text{gen}}$ , it ignores the fact that older fathers tend to pass on more mutations to their offspring than younger fathers. This phenomenon, the paternal age effect, is a consequence of the fact that cell-division replication errors are the major source of germline mutation, and whereas in both sexes there are several divisions associated with embryonic development prior to gametogenesis, spermatogenesis in males involves a process of continuous further cell division throughout reproductive life. Hence the older the father, the more cell divisions his gametes will have passed through, and the more errors accumulated. By contrast, in oogenesis a stock of primary oocytes is generated within the developing embryo, each of which is held in stasis until the final two meiotic divisions leading to ovulation later in life.

Empirical measurements of the paternal age effect in de novo sequencing studies have found that the mean number of mutations passed on by fathers grows linearly with age, approximately doubling between the ages of 20 and 40 years [16–18]. This would seem to largely mitigate the generation time effect on mutation rates [5]. Consider a straightforward extension to the model presented above: for an autosomal lineage (which spends equal time in males and females), we have  $\mu_{\text{gen}} = (\mu_{\text{gen},f} + \mu_{\text{gen},m})/2$ , where  $\mu_{\text{gen},f}$  is the female mutation rate per generation and  $\mu_{\text{gen},m}$  the male rate. Then

$$\mu_{\text{gen},m} = \mu_{\text{dev},m} + \mu_s(t_{\text{gen}} - t_{\text{pub}}),$$

where  $\mu_{\text{dev},m}$  is the per-generation rate of mutations acquired during embryonic and juvenile development in males;  $\mu_s$  is the yearly rate of mutation during spermatogenesis; and  $t_{\text{pub}}$  is the timing of puberty. We ignore any age effect in mutations passed on by females, characterizing them by a single



**Figure 2.** Variation of male age of sexual maturity with body mass and generation time in extant primates. (a) Variation with body mass suggests a scaling coefficient of 0.34. Data from [19,20]. (b) A zero-intercept regression of age of sexual maturity on  $t_{\text{gen}}$  has slope 0.38. Data from [6,19,21–26]. Hominoids are labelled: Hsap, human; Ptro, chimpanzee; Ggor, gorilla, Ppyg, orangutan; Hlar, gibbon.

parameter  $\mu_{\text{gen},f}$ . Parameters in this model can be taken from the experimental data of Kong *et al.* [16], who estimated whole-genome values of  $\mu_{\text{gen},f} = 14.2 \text{ yr}^{-1}$  and  $\mu_s = 2.01 \text{ yr}^{-1}$ ; that  $\mu_{\text{dev},m}$  is estimated by assuming the same mutation rate per cell division in males and females, and that  $\mu_{\text{gen},f}$  and  $\mu_{\text{dev},m}$  correspond to 30 and 37 cell divisions, respectively (see below for a discussion of these assumptions).

If  $t_{\text{pub}}$  is fixed then even a substantial change in generation time has relatively little effect on the yearly mutation rate under this model, as shown in figure 1. However, the assumption of a fixed age of puberty is itself almost certainly invalid, since like other life-history parameters the age of male sexual maturity scales with body mass across the primates, and variation within extant primates suggests a strong correlation ( $R^2 = 0.84$ ) with  $t_{\text{gen}}$  (figure 2). Assessments of sexual maturity can vary and may not coincide with the onset of spermatogenesis in every case [27]. Nevertheless, if we incorporate a linear scaling of  $t_{\text{pub}}$  with  $t_{\text{gen}}$  we recover much of the generation time effect, in the sense that an increase in  $t_{\text{gen}}$  from 15 to 30 years now corresponds to a reduction in  $\mu$  by a factor of 1.5 (figure 1).

### 3. Hidden germline mutations in trio sequencing

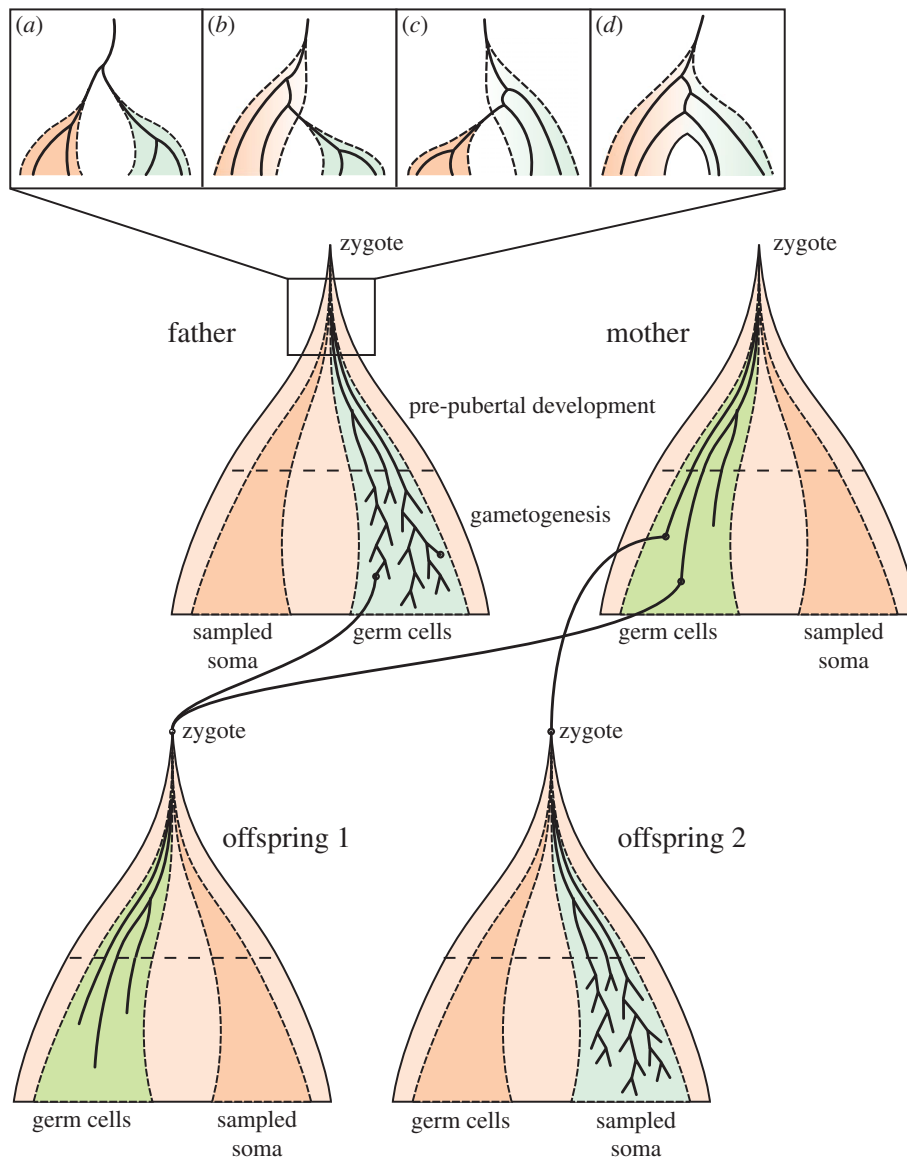
An alternative explanation for the discrepancy in rates may lie in how de novo sequencing experiments relate to the cellular genealogy of the germline, and the definition of germline mutation rate as the mean number of mutations acquired on a germline lineage from zygote to zygote. Mutations on somatic lineages are important in the context of diseases such as cancer, but such lineages do not as a rule extend beyond lifespan of the organism and thus make no direct contribution to evolutionary genetic processes. However, the detection of de novo mutations in trios is based on sequencing somatic cells in parents and offspring, not zygotes (or even other germ cells). To understand the implications of this and how these experiments relate to what we want to measure, we need to

consider the cellular genealogy of the germline within a family (figure 3).

Germ cell specification—the process by which certain cellular lineages are set aside as germ cells—occurs in mammals around the time of gastrulation. Following invagination of the epiblast, a number of cells originating there find a niche in the wall of the yolk sac and subsequently migrate as primordial germ cells (PGCs) to the gonadal ridge. Many somatic lineages also differentiate around the same time, and also have their origins within the epiblast. In humans, this specification process occurs about two weeks after fertilization, or approximately 15 cell divisions [28]. Thereafter, germ cell lineages undergo several further divisions in preparation for gametogenesis: approximately 15 more divisions in females and 20–24 in males [28,29]. Thus, in total, there are about 30–40 mitotic divisions from fertilization to puberty, at which point in males the population of gonial stem cells (GSCs) is established in the testes, and the primary oocytes have been formed in females. From then on, the male and female gametogenetic processes differ markedly, with GSCs replicating continuously in adult males to maintain the germ cell lineages and support gamete production.

Given this structure, the fact that de novo sequencing estimates are based on sequencing somatic rather than germ cells creates a potential for error. For example, in comparing parents and offspring, mutations arising early in the somatic cellular genealogy of the offspring may be counted as de novo germline mutations (false-positive errors), and early mutations in either parent on lineages having both somatic and germline descendants may not be recognized as de novo (false negatives).

Some of these cases may be excluded or recovered by careful filtering based on the fraction of somatic cells in which they are present [30]. However, there may be a class of early post-zygotic mutations which cannot be accounted for in this way, depending on when and how the divergence of germ cell and sequenced somatic lineages occurs. Prior to the completion of this divergence, early embryonic cells may be ancestral both to germ and somatic cells within the organism, and mutations occurring



**Figure 3.** Cellular genealogies in a two-offspring family. Solid black lines represent cellular lineages; germ cell populations are shaded green (in females) or blue (in males), somatic cells are shaded orange. Darker somatic populations represent the cellular ancestors of somatic cells sampled in a sequencing experiment. (a–d) Possible configurations of germ and sampled somatic cellular lineages at the early post-zygotic stage: (a) any cell ancestral to sampled somatic and germ cells is ancestral to all such cells; (b) cells may be ancestral to all germ cells but only some sampled somatic cells; (c) cells may be ancestral to all sampled somatic cells but only some germ cells; (d) cells may be ancestral to some germ cells and some sampled somatic cells (meaning that some germ cells may be more closely related to some somatic cells than to other germ cells, and vice versa).

then may be shared by some or all cells in either genealogy (figure 3). Such ‘hidden’ mutations could contribute a component to the germline mutation rate which is undetectable in parent–offspring comparisons, and whose size depends on the number of cell divisions and the per-cell-division mutation rate at this early stage [31]. For example, it has been suggested that the first few post-zygotic cell divisions might be particularly mutagenic, based on the high level of chromosomal instability and other errors found in early IVF embryos and the frequency of early pregnancy loss after conception [32–34].

The potential for hidden mutations depends on the distribution of cell fates within the epiblast (for which much of our understanding derives from studies in mice or non-human primates). It may also depend to some extent on which somatic cells are sequenced. For example, compared with cells sampled from multiple tissues or from blood, cells derived only from one tissue or region of the body may descend from a smaller number of lineages at any given stage in development. As a consequence, configurations A and C for

the divergence of germ and somatic lineages in figure 3 may be more likely for such cells, potentially increasing the number of early cell divisions in which mutations would be hidden. As an aside, the observation that parental mosaicism in blood is correlated with recurrence risk [35] suggests that lineage ancestries for these cells at least are mixed in humans (case D in figure 3) [36]. Lineage-tracing experiments on mouse oocytes suggest that a similar situation exists in mice across a range of somatic cell types, notwithstanding a degree of lineage clustering by cell type [37].

Might a hidden mutation component explain the discrepancy between phylogenetic and de novo rate estimates? Various considerations suggest that this is unlikely, subject to further data. Firstly, although hidden mutations are impossible to detect in single-generation experiments, comparisons over many generations should be sensitive to mutations on all ‘internal’ segments, including all hidden mutations except at the root and leaves of the pedigree. If hidden mutations make a substantial contribution to the germline mutation

rate, we might expect pedigree-based estimates to be higher than those made in trios. Two such studies have been published to date, of which one did not differ significantly from trio-based estimates [8] and the other obtained a value 33% higher [38]. Forthcoming studies may clarify this picture.

Secondly, a large hidden contribution should lead to a correspondingly high rate of within-family recurrence of genetic diseases associated with de novo mutations. This would be in addition to rates of recurrence due to shared gametic ancestry following germ-cell specification, for which previous models have estimated recurrence rates of  $\ll 1\%$  for mutations of paternal origin (i.e. most mutations) and approximately 4% for those of maternal origin [35,39,40]. By definition, hidden mutations occurring in a parent will be present in all of his or her gametes. Thus, if hidden mutations constitute a fraction  $\phi$  of all germline mutations, the probability of recurrence due to such mutations will be  $\phi R$ , where  $R$  is sibling relatedness. If hidden mutations occurred at a rate similar to the observed de novo mutation rate, so that the total de novo rate matched the phylogenetic rate, we would expect to see at least 25% recurrence of autosomal-linked diseases ( $R = 0.5$ ). Recurrence at sex-linked loci depends on the sexes of offspring, but even in brothers of female offspring we would expect a recurrence rate of at least 12.5% for diseases caused by de novo mutations on the X chromosome ( $R = 0.25$ ).

Clinically estimated recurrence rates depend on the disorder involved and the nature of the causative mutation or mutations. Some disorders such as Duchene muscular dystrophy show recurrence rates as high as 14% [41], but estimates are generally less than 1% [42,43]. However, such estimates may not necessarily reflect the recurrence rates of single-nucleotide variants (SNVs) as counted in de novo sequencing experiments and in phylogenetic comparisons. Even where they relate to clinical genetic data, such data often include structural mutations and chromosomal abnormalities whose origins may tend to differ from those of de novo SNVs. In particular, chromosomal rearrangements may be enriched for meiotic errors [44], whereas the apparent linearity of the paternal age effect suggests that germline SNVs are dominated by mitotic events. Where clinical estimates are based on phenotypic recurrence, uncertainty arises in modelling the relationship between genotype and phenotype, the number of loci involved, and controlling for possible environmental factors. Additionally, some phenotypes may be difficult to diagnose consistently, particularly where there is already a diagnosis in siblings, and further potential bias arises from stoppage, whereby parents of an affected child are less likely to have additional children [45,46]. Some of these considerations suggest that clinical estimates might underestimate the true recurrence of de novo germline mutations. However, the degree of underestimation would have to be at least an order of magnitude to be consistent with a substantial contribution of hidden mutations to the germline mutation rate.

Another effect of hidden mutations would be to inflate the male–female mutation rate ratio as measured in trio comparisons. If hidden mutations occur with equal probability in males and females, and if the male–female ratio of observed (non-hidden) mutations is  $\alpha_{\text{obs}}$  it is straightforward to show that the true male–female ratio  $\alpha$  is bounded above by  $\alpha_{\text{obs}}$  and given by

$$\alpha = \frac{(1 - \alpha_{\text{obs}})\phi + 2\alpha_{\text{obs}}}{2 - (1 - \alpha_{\text{obs}})\phi}.$$

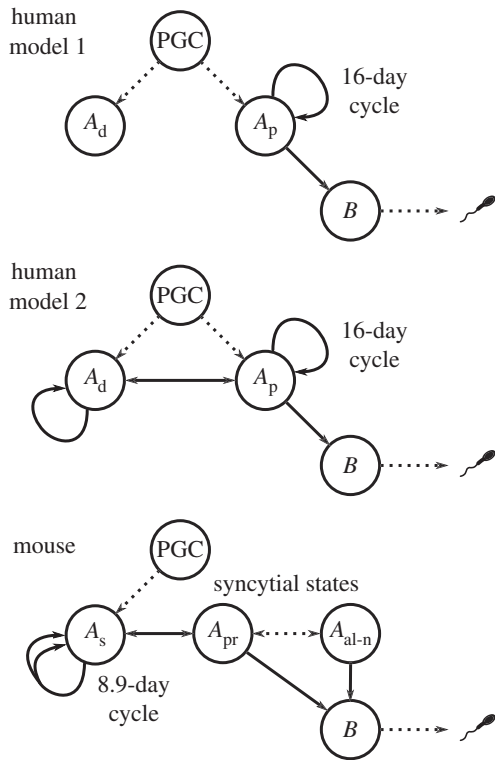
The value  $\alpha_{\text{obs}}$  estimated in trios by Kong *et al.* [16] was 3.9. Alternative estimates based on comparing X-chromosome and autosomal genetic diversity within or between species (which should reflect all germline mutations) have typically fallen in the range 3–7 [47]. Values at the lower end of this range could suggest a moderate contribution from hidden mutations (rearranging the above expression,  $\alpha = 3$  and  $\alpha_{\text{obs}} = 3.9$  implies  $\phi = 0.15$ ), but a value higher than  $\alpha_{\text{obs}}$  would be inconsistent with the model presented here. In this case, it may be that hidden mutations are not equally likely in males and females, which would be surprising given that most or all of the cell divisions involved occur prior to the onset of somatic sex differentiation in the embryo. However, there are also several factors which can substantially bias the rate estimated from X-autosomal comparisons, including selection, sex-biased demography and differences between male and female generation times [48–50]. Moreover, just as the overall germline mutation rate may have varied over evolutionary timescales, so too might the gametogenetic factors contributing to male mutation bias, which would further affect estimates based on genetic diversity.

#### 4. Changes in the structure of spermatogenesis

The importance of paternally transmitted mutations focuses attention on spermatogenesis as a key factor affecting the germline mutation rate. The established model of human spermatogenesis is based on long-standing experimental observations of the seminiferous epithelium (the environment within the testes where spermatogenesis occurs) [51,52]. Yves Clermont observed several types of spermatogonial cell in humans, differing in their appearance and degree of staining with haematoxylin and eosin [53]. Two of these types correspond to self-renewing (GSC) states [54], and based on their staining are generally referred to as pale ( $A_p$ ) and dark ( $A_d$ ) spermatogonia. However, in Clermont's observations only  $A_p$  cells were seen to actively divide, each doing so every 16 days to produce a new  $A_p$  cell and a progenitor spermatocyte which he termed B-spermatogonia. The latter subsequently undergo two further mitotic divisions and meiosis to produce up to 32 spermatozoa [54] in a process lasting 48 days. Thus,  $A_p$  cells are widely regarded as the active spermatogenetic population and  $A_d$  cells are thought to comprise a pool of reserve stem cells, to be drawn upon only when the active population has failed or is damaged. Figure 4 (model 1) illustrates this model in terms of the cell states and transitions involved.

One possible explanation for a slowdown in mutation rate would, therefore, be an increase in the cycle time of the seminiferous epithelium during hominoid evolution, leading to fewer mutations acquired during spermatogenesis for a typical adult male. Such a change is equivalent to varying  $\mu_s$  in the model discussed above, and figure 5 shows the effect on germline mutation rate, assuming that puberty also scales with generation time as previously discussed. The seminiferous epithelial cycle time in monkeys varies between 9 and 11 days [55], and if the cycle time in ancestral great apes was similar to this, the change since then would correspond to a mutation rate slowdown by almost a factor of 2 (dashed line in figure 5), perhaps sufficient to explain the discrepancy in mutation rates.

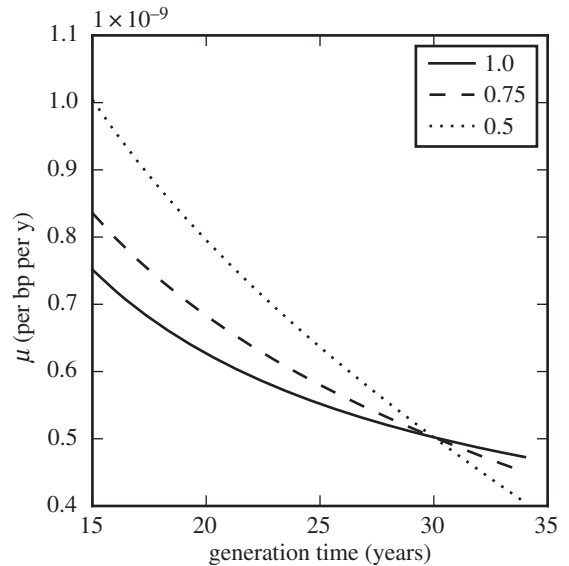
However, there is a problem with this model as presented, in that lineages resulting in gametes produced by a



**Figure 4.** Cell states and possible transitions in models of human and mouse spermatogenesis, from primordial germ cell (PGC) to spermiogenesis. Dotted lines represent transitions involving one or more intermediate states (e.g. the initial transition from PGC to  $A_p$  is sometimes thought to pass through a temporary  $A_d$  state). Two human models are shown: model 1 is the established model originally due to Clermont [51], and model 2 an alternative model discussed in the text. In the mouse model, the double arrow from  $A_s$  to itself indicates that cell division is symmetric:  $A_s \rightarrow A_s + A_s$ .

30-year-old male would have passed through approximately 400 cell divisions since fertilization, meaning we would expect a roughly 10-fold increase in the number of mutations passed on to offspring at age 30 compared with those at puberty. Yet sequencing studies have consistently measured only a twofold increase from early to late adulthood [16–18]. This discrepancy, noted also by Ségurel *et al.* [5], suggests that aspects of the model for spermatogenesis need to be revised.

One possibility is that per-cell-division mutation rates are much higher at earlier developmental stages than during spermatogenesis. For example, there is evidence that somatic cell-division mutation rates are substantially higher than those in germ cells [56] and it may be that changes in the environment or phenotype of cells at germ cell specification are accompanied by improved mechanisms of DNA replication error correction. In order to account for a weak paternal age effect, the mutation rate in the first 15 cell divisions (prior to specification) would need to be a factor of approximately 20 higher than in subsequent divisions, which is near the limit of the range of reported estimates for germline and somatic cells [1]. Note also that this excludes any hidden mutations of the kind discussed above, although such mutations would also be made more likely by a high post-zygotic mutation rate, as discussed above. Alternatively, elevated per-cell-division rates may last for a longer time, perhaps until the onset of spermatogenesis or shortly thereafter. If we assume a higher rate applies to the first 40 divisions then it need only be higher by a factor of approximately 9. A recent study of transmitted mutations in a large

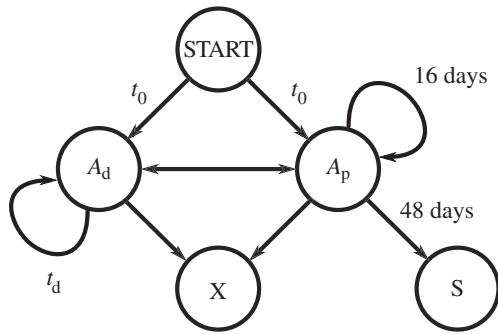


**Figure 5.** Models of human mutation rate slowdown in which the seminiferous epithelial cycle time increases with generation time and age of puberty. Dotted line: cycle time is 0.5 times the present length when generation time is 15 years; dashed line: cycle time is 0.75 times the present length when generation time is 15 years; solid line: no change in cycle time (identical to the solid line in figure 1). Overall rates per basepairs are scaled to be  $0.5 \times 10^{-9} \text{ bp}^{-1} \text{ yr}^{-1}$  when  $t_{\text{gen}} = 30 \text{ yr}$ .

cohort including some teenage fathers suggested that the very earliest stage of spermatogenesis may be more mutagenic [18]. If true, this might reflect a shift to lower mutation rates once spermatogenesis is fully established. Early spermatogenesis is known to differ in some respects from the process later on: for example, daily sperm production (DSP) volumes are approximately 10 times lower in teenage males than in men 20–30 years old [57].

Another possibility is that the apparent 16-day cycle of the seminiferous epithelium is only part of the picture and that germline lineages actually experience a longer cell-cycle time for some or all of their passage through spermatogenesis. This would imply a more complex structure for GSC state transitions and the number of self-renewing states in which they can exist. It is of course possible to conceive of many such models, but a relatively straightforward extension of the existing model would be for the  $A_d$  cells to play a more prominent role. If they replicate with a longer cycle time than was detectable in Clermont's data, and if transitions are possible between the  $A_d$  and  $A_p$  states, then germline lineages could spend some or even most of their time in the  $A_d$  state during spermatogenesis (figure 4, model 2). By reducing the number of germline cell divisions, this could account for a weaker than expected paternal age effect.

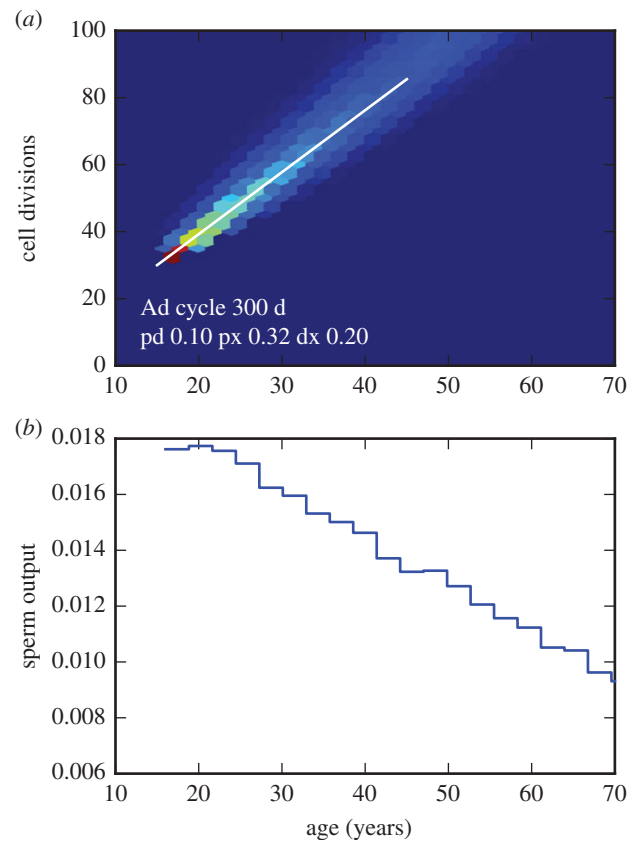
Potential evidence for such a model comes from several sources. Within primates, investigations of spermatogonial renewal in monkeys after exposure to radioactive or contraceptive agents [58,59] have shown that  $A_p$  cells may be able to transition to  $A_d$  without undergoing cell division. If this occurs under normal conditions then the  $A_d$  state could play a role other than that of a dormant and non-proliferative reserve. Other evidence comes from comparison with spermatogenesis in mice, which although differing in several respects does share many basic features with primates [60] (figure 4). GSCs in mice can exist in a singular state ( $A_s$ ) or in various syncytial states wherein the nuclei share a



**Figure 6.** A possible finite state model for spermatogenesis. Germline lineages are traced through the model, entering at the START state, from which they can transition to either of the GSC states  $A_d$  or  $A_p$ . The cell death state (X) can be reached from either GSC state, whereas we assume here that spermiogenesis (S) is possible only from  $A_p$ . Transitions from the GSC states correspond to cell divisions, so the model describes a branching process representing an entire genealogy of spermatozoa, each descended from a single primordial germ cell (PGC) and having an associated age and total number of cell divisions (depth) from the root of the genealogy. In the established model (model 1 in figure 4), the transition  $A_p \rightarrow A_d$  has zero probability under normal conditions.

common cytoplasm, either paired (state  $A_{pr}$ ) or in longer alignments of  $n$  cells (states  $A_{al-n}$ ) [61]. Recent experimental studies suggest that progenitor spermatocytes may be produced from divisions of any of these states [60,62], but the degree of commitment to (or likelihood of) differentiation may be greater in the  $A_{al}$  state. An analogy can be drawn with the process in humans, based both on function and on expression levels of several molecular markers, in which the  $A_s$  state corresponds to  $A_d$  and the  $A_{pr}$  and  $A_{al}$  states correspond to  $A_p$  [60,63]. Moreover, a model of stochastic transition between the  $A_s$ ,  $A_{pr}$  and  $A_{al}$  states, in which intracellular bridges are broken as well as created, has been shown to fit the dynamics of GSC populations in mice [62,63]. The analogous set of transitions in humans and other primates would fit the alternative model shown in figure 4.

By making certain assumptions about the possible transitions between GSC states, we can estimate what cycle time for the  $A_d$  state would produce the observed paternal age effect. Previous approaches to modelling stem-cell systems have sometimes assumed homeostatic equilibrium as a way of estimating or constraining model parameters (e.g. [62]), but it may be that spermatogenesis is better represented as a near-equilibrium process. For example, there is notable variation in DSP with age: in humans mean DSP decreases steadily in older men, dropping by a factor of 2 from age 20–80 years [57]. To capture these non-equilibrium aspects, we can use a finite state simulation in which transitions between cell states have both a probability parameter and an associated transition time (figure 6). The basic assumption of this model is that the transition  $A_p \rightarrow A_d$  occurs with some probability during each  $A_p$  cycle. For the reverse transition, since  $A_p$  is observed to divide asymmetrically ( $A_p \rightarrow A_p + S$ ), I assume for now that  $A_d$  behaves similarly ( $A_d \rightarrow A_d + A_p$ ); an alternative choice ( $A_d \rightarrow A_p$ ) is discussed below. I also introduce a cell-death state which both regulates the process (since otherwise  $A_d$  replication will lead to unbounded GSC proliferation) and ensures that gamete production declines with age. It is plausible that cell death plays a central role in regulating many stem-cell systems [64], and GSC replication occurs only



**Figure 7.** Output from an implementation of the model in figure 6, for parameters fitting the observed paternal age effect and decline in sperm production. (Code available upon request.) (a) Joint distribution of paternal age and number of cell divisions as the zygote in simulated spermatozoa (colours indicate relative frequency from zero (dark blue) to high (red)) for a set of parameters in which the  $A_d$  cycle time  $t_d = 300$  days and initial transition times  $t_0$  were sampled uniformly from the range 5000–5500 days,  $P(A_p \rightarrow A_d) = 0.1$ ,  $P(A_p \rightarrow X) = 0.32$ ,  $P(A_d \rightarrow X) = 0.2$ . The white line shows the slope of the paternal age effect observed in humans. (b) Simulated relative daily sperm output as a function of age.

within a niche at the basement membrane of a seminiferous tubule for which several cellular and other environmental factors may be essential. In particular, the availability of Sertoli cells, somatic cells which play both a structural and regulatory role in gamete production, is thought to be a critical factor [52,57]. Cell-death probabilities in this model are an abstraction representing the typical availability of and contention for these critical factors.

A simple parameter-space search, fitting simulated output of this model to the observed slopes of the paternal age effect and DSP age profile, estimates an  $A_d$  cycle time of around 300 days and values of 20–30% for transition probabilities to the cell-death state (figure 7). Replication of  $A_d$  cells on this timescale would likely not have been observed in Clermont's or subsequent experiments, although transitions  $A_p \rightarrow A_d$ , which in this example are predicted to occur in 10% of  $A_p$  cycles, might be detectable.

Other model assumptions are possible, and may result in different parameter estimates. For example, in a model where the  $A_d \rightarrow A_p$  transition occurs without cell division, so that the  $A_d$  cycle is essentially a quiescent interlude before GSCs return to the active  $A_p$  state, a similar procedure fitting the observed paternal age-effect estimates a cycle time of around 750 days (data not shown). However, the point here is not

that parameters can be inferred under one model or another, but the fact that including an active role for the  $A_d$  cells allows models which are compatible both with long-standing observations of the seminiferous epithelium and with recent measurements of the paternal age effect. More sophisticated models might also include feedback or global regulation mechanisms other than cell death [52,55], age-related changes in cell-division mutation rate and spermiogenetic efficiency, and perhaps phenomena such as selfish spermatogonial selection [65]. At present, experimental data are limited, but more extensive data including trio sequencing on population-wide scales will provide a better basis for exploration of spermatogenetic models along these or similar lines.

## 5. Discussion

I have argued that the discrepancy between phylogenetic and de novo estimates of the mutation rate is more probably due to a genuine evolutionary slowdown than to methodological errors or the failure of trio sequencing experiments to detect early post-zygotic mutations. Nevertheless, the latter factors may be present at some level and thus contribute to the discrepancy, meaning that the magnitude of any slowdown may be less than was first hypothesized. Also, while we may be confident that rates have slowed at some point during primate evolution, our inference of the timing, extent and number of ancestral lineages involved in such a slowdown is determined largely by the fossil record and the confidence with which we can constrain speciation events, particularly within the hominoids. Initial attempts to reconcile the rate discrepancy were concerned with the plausibility of a slowdown affecting all four great ape lineages in parallel and to the same degree, given that their branch lengths from an outgroup such as macaque do not differ substantially [49]. However, if newer interpretations of the fossil record were to admit a more ancient speciation time of 20 Ma or more between the ancestors of orangutans and other great apes, they would be consistent with an earlier slowdown affecting only the stem hominoid lineage, and this would suffice to explain the current data without requiring parallel evolution.

## References

- Lynch M. 2010 Evolution of the mutation rate. *Trends Genet.* **26**, 345–352. (doi:10.1016/j.tig.2010.05.003)
- Haldane JBS. 2004 The rate of spontaneous mutation of a human gene. 1935. *J. Genet.* **83**, 235–244. (doi:10.1007/BF02717892)
- Nachman MW. 2004 Haldane and the first estimates of the human mutation rate. *J. Genet.* **83**, 231–233. (doi:10.1007/BF02717891)
- Scally A, Durbin R. 2012 Revising the human mutation rate: implications for understanding human evolution. *Nat. Rev. Genet.* **13**, 745–753. (doi:10.1038/nrg3295)
- Ségurel L, Wyman MJ, Przeworski M. 2014 Determinants of mutation rate variation in the human germline. *Annu. Rev. Genom. Hum. Genet.* **15**, 47–70. (doi:10.1146/annurev-genom-031714-125740)
- Carbone L *et al.* 2014 Gibbon genome and the fast karyotype evolution of small apes. *Nature* **513**, 195–201. (doi:10.1038/nature13679)
- Stevens NJ *et al.* 2013 Palaeontological evidence for an Oligocene divergence between Old World monkeys and apes. *Nature* **497**, 611–614. (doi:10.1038/nature12161)
- Campbell CD *et al.* 2012 Estimating the human mutation rate using autozygosity in a founder population. *Nat. Genet.* **44**, 1277–1281. (doi:10.1038/ng.2418)
- Fu Q *et al.* 2014 Genome sequence of a 45,000-year-old modern human from western Siberia. *Nature* **514**, 445–449. (doi:10.1038/nature13810)
- Schiffels S, Durbin R. 2014 Inferring human population size and separation history from multiple genome sequences. *Nat. Genet.* **46**, 919–925. (doi:10.1038/ng.3015)
- Wu CI, Li WH. 1985 Evidence for higher rates of nucleotide substitution in rodents than in man. *Proc. Natl Acad. Sci. USA* **82**, 1741–1745. (doi:10.1073/pnas.82.6.1741)
- Wilson Sayres MA, Venditti C, Pagel M, Makova KD. 2011 Do variations in substitution rates and male mutation bias correlate with life-history traits? A study of 32 mammalian genomes. *Evolution (NY)* **65**, 2800–2815.
- Fleagle JG. 1998 *Primate adaptation and evolution*, 2nd edn. New York, NY: Academic Press.
- Jones JH. 2011 Primates and the evolution of long, slow life histories. *Curr. Biol.* **21**, R708–R717. (doi:10.1016/j.cub.2011.08.025)
- de Magalhães JP, Costa J, Church GM. 2007 An analysis of the relationship between metabolism, developmental schedules, and longevity using phylogenetic independent contrasts. *J. Gerontol. A*

More broadly, and regardless of the extent to which rates may have changed in recent primate evolution, the processes considered here are relevant to evolutionary genetic analyses across the mammalian tree and beyond. Previous studies have proposed life-history variation as an explanation for mutation rate change, but it is clear that such explanations need to involve more biologically sophisticated models incorporating factors such as varying pubertal age and sex-dependent parameters [5,50]. Mutation rate change may also be due to evolution in the underlying cellular processes and genealogical structure of the germline, particularly in gametogenesis. Here too, recent experimental data are incongruous with existing models of spermatogenesis and the strength of the paternal age effect. I have focused on potential variation in cell-division mutation rates at different developmental stages and on the stem-cell states involved in spermatogenesis. Other issues not touched on include the relative importance of spontaneous mutation processes [66], potential evidence for a maternal age effect [67], and the evolution of regulatory factors controlling gametogenesis [52]. Progress to date in addressing these questions has been difficult in part because of the challenge of obtaining experimental data on human germline processes: some techniques can only be applied to non-human models, and genome sequence data for human de novo mutations has previously been limited. However, the potential now exists for large-scale genome sequencing of somatic and germ cells and experimental studies of non-human and human stem cell systems. In combination with computational modelling approaches such as that presented here (and widely used in previous studies to explore stem-cell population dynamics [35,62,68–70]), these developments will facilitate a better understanding of mutation processes and the evolution of the human germline.

**Competing interests.** I have no competing interests.

**Funding.** I am grateful for support from an Isaac Newton Trust/Wellcome Trust ISSF Joint Research Grant.

**Acknowledgement.** I thank Matt Hurler, Anne Goriely, Guy Sella, Molly Przeworski, Guy Amster, Raheleh Rahbari, Sarah Lindsay and Alfonso Martinez-Arias for useful discussions.



- Biol. Sci. Med. Sci.* **62**, 149–160. (doi:10.1093/gerona/62.2.149)
16. Kong A *et al.* 2012 Rate of *de novo* mutations and the importance of father's age to disease risk. *Nature* **488**, 471–475. (doi:10.1038/nature11396)
  17. Sun JX *et al.* 2012 A direct characterization of human mutation based on microsatellites. *Nat. Genet.* **44**, 1161–1165. (doi:10.1038/ng.2398)
  18. Forster P, Hohoff C, Dunkelmann B, Schürenkamp M, Pfeiffer H, Neuhuber F, Brinkmann B. 2014 Elevated germline mutation rate in teenage fathers. *Proc. R. Soc. B* **282**, 20142898. (doi:10.1098/rspb.2014.2898)
  19. Saltzman W, Tardif SD, Rutherford JN. 2011 Hormones and reproductive cycles in primates. In *Hormones and reproduction of vertebrates*, pp. 291–327. London, UK: Elsevier.
  20. Kingsley SR. 1988 Physiological development of male orang-utans and gorillas. In *Orang-utan biology*, pp. 123–131. New York, NY: Oxford University Press.
  21. Langergraber KE *et al.* 2012 Generation times in wild chimpanzees and gorillas suggest earlier divergence times in great ape and human evolution. *Proc. Natl Acad. Sci. USA* **109**, 15 716–15 721. (doi:10.1073/pnas.1211740109)
  22. Molur S, Brandon-Jones DW, Dittus W, Eudey A, Kumar A, Singh M *et al.* 2003 Status of South Asian primates: Conservation Assessment and Management Plan (C.A.M.P.) workshop report, p. viii+432.
  23. Rogers J, Kidd KK. 1996 Nucleotide polymorphism, effective population size, and dispersal distances in the yellow baboons (*Papio hamadryas cynocephalus*) of Mikumi National Park, Tanzania. *Am. J. Primatol.* **38**, 157–168. (doi:10.1002/(SICI)1098-2345(1996)38:2<157::AID-AJP4>3.0.CO;2-Y)
  24. Milton K, Lozier JD, Lacey EA. 2009 Genetic structure of an isolated population of mantled howler monkeys (*Alouatta palliata*) on Barro Colorado Island, Panama. *Conserv. Genet.* **10**, 347–358. (doi:10.1007/s10592-008-9584-3)
  25. Tardif S, Carville A, Elmore D, Williams LE, Rice K. 2012 Reproduction and breeding of nonhuman primates. In *Nonhuman primates in biomedical research*, pp. 197–249. London, UK: Elsevier.
  26. Schneider N, Chikhi L, Currat M, Radespiel U. 2010 Signals of recent spatial expansions in the grey mouse lemur (*Microcebus murinus*). *BMC Evol. Biol.* **10**, 105. (doi:10.1186/1471-2148-10-105)
  27. Luetjens CM, Weinbauer GF. 2012 Functional assessment of sexual maturity in male macaques (*Macaca fascicularis*). *Regul. Toxicol. Pharmacol.* **63**, 391–400. (doi:10.1016/j.yrtph.2012.05.003)
  28. Drost JB, Lee WR. 1995 Biological basis of germline mutation: comparisons of spontaneous germline mutation rates among *Drosophila*, mouse, and human. *Environ. Mol. Mutagen* **25**, 48–64. (doi:10.1002/em.2850250609)
  29. Crow JF. 2000 The origins, patterns and implications of human spontaneous mutation. *Nat. Rev. Genet.* **1**, 40–47. (doi:10.1038/35049558)
  30. Acuna-Hidalgo R *et al.* 2015 Post-zygotic point mutations are an underrecognized source of *de novo* genomic variation. *Am. J. Hum. Genet.* **97**, 67–74. (doi:10.1016/j.ajhg.2015.05.008)
  31. Harland C. 2015 Frequency of mosaicism points towards mutation prone early cleavage cell divisions. In *Biology of genomes*. Cold Spring Harbor, NY: Cold Spring Harbor Press.
  32. Vanneste E, *et al.* 2009 Chromosome instability is common in human cleavage-stage embryos. *Nat. Med.* **15**, 577–583. (doi:10.1038/nm.1924)
  33. Chow JFC, Yeung WSB, Lau EYL, Lee VCY, Ng EHY, Ho P-C. 2014 Array comparative genomic hybridization analyses of all blastomeres of a cohort of embryos from young IVF patients revealed significant contribution of mitotic errors to embryo mosaicism at the cleavage stage. *Reprod. Biol. Endocrinol.* **12**, 105. (doi:10.1186/1477-7827-12-105)
  34. Macklon NS, Geraedts JPM, Fauser BCGM. 2002 Conception to ongoing pregnancy: the 'black box' of early pregnancy loss. *Hum. Reprod. Update* **8**, 333–343. (doi:10.1093/humupd/8.4.333)
  35. Campbell IM, Stewart JR, James RA, Lupski JR, Stankiewicz P, Olofsson, Shaw CA. 2014 Parent of origin, mosaicism, and recurrence risk: probabilistic modeling explains the broken symmetry of transmission genetics. *Am. J. Hum. Genet.* **95**, 345–359. (doi:10.1016/j.ajhg.2014.08.010)
  36. Samuels M, Friedman J. 2015 Genetic mosaics and the germ line lineage. *Genes (Basel)* **6**, 216–237.
  37. Reizel Y *et al.* 2012 Cell lineage analysis of the mammalian female germline. *PLoS Genet.* **8**, e1002477. (doi:10.1371/journal.pgen.1002477)
  38. Palamara PF *et al.* 2015 Leveraging distant relatedness to quantify human mutation and gene conversion rates. *Am. J. Hum. Genet.* **97**, 775–789. (doi:10.1016/j.ajhg.2015.10.006)
  39. Hartl DL. 1971 Recurrence risks for germinal mosaics. *Am. J. Hum. Genet.* **23**, 124–134.
  40. Wijsman EM. 1991 Recurrence risk of a new dominant mutation in children of unaffected parents. *Am. J. Hum. Genet.* **48**, 654–661.
  41. Bakker E, Veenema H, Den Dunnen JT, van Broeckhoven C, Grootsholten PM, Bonten EJ, van Ommen GJ, Pearson PL. 1989 Germinal mosaicism increases the recurrence risk for 'new' Duchenne muscular dystrophy mutations. *J. Med. Genet.* **26**, 553–559. (doi:10.1136/jmg.26.9.553)
  42. Röthlisberger B, Kotzot D. 2007 Recurrence risk in *de novo* structural chromosomal rearrangements. *Am. J. Med. Genet. A* **143A**, 1708–1714. (doi:10.1002/ajmg.a.31826)
  43. McGaughran J, Sinnott S, Dastot-Le Moal F, Wilson M, Mowat D, Sutton B, Goossens M. 2005 Recurrence of Mowat-Wilson syndrome in siblings with the same proven mutation. *Am. J. Med. Genet. A* **137A**, 302–304. (doi:10.1002/ajmg.a.30896)
  44. Poot M, Haaf T. 2015 Mechanisms of origin, phenotypic effects and diagnostic implications of complex chromosome rearrangements. *Mol. Syndromol.* **6**, 110–134. (doi:10.1159/000438812)
  45. Guo S-W. 1998 Inflation of sibling recurrence-risk ratio, due to ascertainment bias and/or overreporting. *Am. J. Hum. Genet.* **63**, 252–258. (doi:10.1086/301928)
  46. Slager SL, Foroud T, Haghghi F, Spence MA, Hodge SE. 2001 Stoppage: an issue for segregation analysis. *Genet. Epidemiol.* **20**, 328–339. (doi:10.1002/gepi.4)
  47. Wilson Sayres MA, Makova KD. 2011 Genome analyses substantiate male mutation bias in many species. *BioEssays* **33**, 938–945. (doi:10.1002/bies.201100091)
  48. Vicoso B, Charlesworth B. 2006 Evolution on the X chromosome: unusual patterns and processes. *Nat. Rev. Genet.* **7**, 645–653. (doi:10.1038/nrg1914)
  49. Scalli A *et al.* 2012 Insights into hominid evolution from the gorilla genome sequence. *Nature* **483**, 169–175. (doi:10.1038/nature10842)
  50. Amster G, Sella G. 2016 Life history effects on the molecular clock of autosomes and sex chromosomes. *Proc. Natl. Acad. Sci. USA* **113**(6), 1588–1593. (doi:10.1073/pnas.1515798113)
  51. Clermont Y. 1969 Two classes of spermatogonial stem cells in the monkey (*Cercopithecus aethiops*). *Am. J. Anat.* **126**, 57–71. (doi:10.1002/aja.1001260106)
  52. Schlatt S, Ehmcke J. 2014 Regulation of spermatogenesis: an evolutionary biologist's perspective. *Semin. Cell Dev. Biol.* **29**, 2–16. (doi:10.1016/j.semdb.2014.03.007)
  53. Clermont Y. 1963 The cycle of the seminiferous epithelium in man. *Am. J. Anat.* **112**, 35–51. (doi:10.1002/aja.1001120103)
  54. Ehmcke J, Schlatt S. 2006 A revised model for spermatogonial expansion in man: lessons from non-human primates. *Reproduction* **132**, 673–680. (doi:10.1530/rep.1.01081)
  55. Luetjens CM, Weinbauer GF, Wistuba J. 2005 Primate spermatogenesis: new insights into comparative testicular organisation, spermatogenic efficiency and endocrine control. *Biol. Rev. Camb. Philos. Soc.* **80**, 475–488. (doi:10.1017/S1464793105006755)
  56. Lynch M. 2010 Rate, molecular spectrum, and consequences of human mutation. *Proc. Natl Acad. Sci. USA* **107**, 961–968. (doi:10.1073/pnas.0912629107)
  57. Amann RP. 2008 The cycle of the seminiferous epithelium in humans: a need to revisit? *J. Androl.* **29**, 469–487. (doi:10.2164/jandrol.107.004655)
  58. Fouquet JP. 1986 Renewal of spermatogonia in the monkey (*Macaca fascicularis*). *Biol. Reprod.* **35**, 199–207. (doi:10.1095/biolreprod35.1.199)
  59. O'Donnell L. 2001 Impairment of spermatogonial development and spermiation after testosterone-induced gonadotropin suppression in adult monkeys (*Macaca fascicularis*). *J. Clin. Endocrinol. Metab.* **86**, 1814–1822.
  60. Hermann BP, Sukhwani M, Hansel MC, Orwig KE. 2010 Spermatogonial stem cells in higher primates: are there differences from those in rodents? *Reproduction* **139**, 479–493. (doi:10.1530/REP-09-0255)
  61. de Rooij DG, Griswold MD. 2012 Questions about spermatogonia posed and answered since 2000. *J. Androl.* **33**, 1085–1095. (doi:10.2164/jandrol.112.016832)

62. Hara K, Nakagawa T, Enomoto H, Suzuki M, Yamamoto M, Simons BD, Yoshida S. 2014 Mouse spermatogenic stem cells continually interconvert between equipotent singly isolated and syncytial states. *Cell Stem Cell* **14**, 658–672. (doi:10.1016/j.stem.2014.01.019)
63. Krieger T, Simons BD. 2015 Dynamic stem cell heterogeneity. *Development* **142**, 1396–1406. (doi:10.1242/dev.101063)
64. Print CG, Loveland KL. 2000 Germ cell suicide: new insights into apoptosis during spermatogenesis. *BioEssays* **22**, 423–430. (doi:10.1002/(SICI)1521-1878(200005)22:5<423::AID-BIES4>3.0.CO;2-0)
65. Maher GJ, Goriely A, Wilkie AOM. 2014 Cellular evidence for selfish spermatogonial selection in aged human testes. *Andrology* **2**, 304–314. (doi:10.1111/j.2047-2927.2013.00175.x)
66. Gao Z, Wyman MJ, Sella G, Przeworski M. 2016 Interpreting the dependence of mutation rates on age and time. *PLoS Biol.* **14**(1), e1002355. (doi:10.1371/journal.pbio.1002355)
67. Dunlop CE, Telfer EE, Anderson RA. 2014 Ovarian germline stem cells. *Stem Cell Res. Ther.* **5**, 98. (doi:10.1186/scrt487)
68. Qin J, Calabrese P, Tiemann-Boege I, Shinde DN, Yoon S-R, Gelfand D, Bauer K, Arnheim N. 2007 The molecular anatomy of spontaneous germline mutations in human testes. *PLoS Biol.* **5**, e224. (doi:10.1371/journal.pbio.0050224)
69. Giannoulitou E *et al.* 2013 Contributions of intrinsic mutation rate and selfish selection to levels of de novo *HRAS* mutations in the paternal germline. *Proc. Natl Acad. Sci. USA* **110**, 20 152–20 157. (doi:10.1073/pnas.1311381110)
70. de Rooij DG, van Beek MEAB. 2013 Computer simulation of the rodent spermatogonial stem cell niche. *Biol. Reprod.* **88**, 131–131. (doi:10.1095/biolreprod.113.108639)