

RESEARCH

Open Access



# Prostate-specific antigen density values among patients with symptomatic prostatic enlargement in Nigeria

Emeka I. Udeh<sup>1,5\*</sup>, Ikenna I. Nnabugwu<sup>1</sup>, Francis O. Ozoemena<sup>1</sup>, Fred O. Ugwumba<sup>1</sup>, Adesina S. O. Aderibigbe<sup>2</sup>, Samuel R. Ohayi<sup>3</sup> and Kevin N. Echetabu<sup>4</sup>

## Abstract

**Background:** This study aims to estimate the prostate-specific antigen density (PSAD) cutoff level for detecting prostate cancer (CAP) in Nigerian men with “grey zone PSA” (4–10 ng/ml) and normal digital rectal examination findings. We addressed this research question: Is the international PSAD cutoff of 0.15 ideal for detecting CAP in our symptomatic patients with “grey zone PSA?”

**Methods:** Aim: To estimate the prostate-specific antigen density (PSAD) cutoff level for detecting CAP in Nigerian men with “grey zone PSA” (4–10 ng/ml) and normal digital rectal examination findings.

Design: Prospective.

Setting: A tertiary medical center in Enugu, Nigeria.

Participants: Two hundred and fifty-four men with either benign prostatic hyperplasia (BPH) or CAP were recruited.

Intervention: Patients with PSA above 4 ng/ml or abnormal digital rectal examination or hypoechoic lesion in the prostate were biopsied.

Outcome measures: PSAD and histology report of BPH or CAP.

**Results:** Ninety-seven patients had CAP while 157 had benign prostatic hyperplasia (BPH). Seventy-two patients had their serum PSA value within the range of 4.0 and 10 ng/ml. PSAD cutoff level to detect CAP was 0.04 (sensitivity 95.88 %; specificity 28.7 %).

**Conclusions:** The PSAD cutoff level generated for Nigerian men in this study is 0.04 which is relatively different from international consensus. This PSAD cutoff level has a positive correlation with histology and could detect patients with CAP who have “grey zone PSA.”

**Keywords:** Prostate-specific antigen density, Nigerian men, Symptomatic prostatic enlargement

## Background

There is significant morbidity and mortality associated with prostate cancer (CAP), and recent studies have shown that about 64 % of patients diagnosed with CAP die within 2 years in Nigeria [1]. Unfortunately, there appears to be an increase in the incidence of CAP [2, 3]. There are concerted efforts to improve the screening capability of serum total prostate-specific antigen (PSA)

necessitating the various modifications in PSA. Prostate-specific antigen density (PSAD) is one of these modifications.

PSAD estimates the PSA secreted per unit volume of prostatic tissue. This is expected to be higher in malignancy. Also, there has been documented variation in PSA secreted per gram of tissue among different races [4]. Asians for instance secrete more PSA per unit gram of tissue compared to Caucasians [4], while blacks secrete even higher PSA per gram tissue than other races when controlled for age, clinical stage, and Gleason grade [5].

\* Correspondence: emeka.udeh@unn.edu.ng

<sup>1</sup>Department of Surgery, University of Nigeria, Enugu, Nigeria

<sup>5</sup>Department of Surgery, Faculty of medicine, College of medicine, University of Nigeria, Enugu, Nigeria

Full list of author information is available at the end of the article

Furthermore, the PSAD cutoff level of 0.15 for detecting CAP developed from a study on Caucasians and African Americans [6] has generated a lot of controversies in recent times [7]. Some authorities believe that when applied to other races or environments, it is not very sensitive and as such could miss out malignant prostates if relied upon solely [7].

Unfortunately, in our environment, most patients present to the clinicians only when they are symptomatic. This underscores the need to appraise the role of PSAD cutoff level of 0.15 in the Nigerian setting.

This study undertakes to determine the difference in prostate-specific antigen density values among our patients with symptomatic benign prostatic hyperplasia on one hand and symptomatic carcinoma of the prostate on the other hand and then to estimate the possible PSAD cutoff level with acceptable sensitivity and specificity for detecting CAP among patients with serum total PSA values in the “grey zone PSA” range (>4 to 10 ng/ml) who have benign digital rectal examination.

**Methods**

**Study setting**

This study took place at the urology clinic of Enugu State University Teaching Hospital Park Lane, Enugu, Nigeria. Enugu is the major commercial city of Enugu state, southeast Nigeria, with a population of 722,664. This was a hospital-based prospective study consisting of patients with symptomatic prostatic disease.

**Study population**

This was a hospital-based study and the subjects consisted of patients with BPH and CAP diagnosed for the first time.

**Inclusion and exclusion criterion**

The inclusion criteria consisted of all consented patients who had symptomatic prostatic diseases and presented for the first time to the clinic between November 2009 and December 2012 and were subsequently diagnosed to have either benign prostatic hyperplasia (BPH) or CAP. Excluded from the study were patients who have had any form of treatment for BPH or CAP previously. Previous treatments such as 5 alpha reductase inhibitors, gonadotropin-releasing hormone agonist, or orchiectomy do affect PSA levels and prostate volume [8, 9], both of which are used in determining PSAD. Also, excluded were those with coexisting urethral stricture and diabetes mellitus as these could alter bladder dynamics. In addition, those with other causes of lower urinary tract symptoms were excluded.

**Study method**

Ethical clearance for the study was obtained from ESUT Teaching Hospital Park Lane Ethical committee.

The sample size was calculated using the statistical formula shown below:

$$N = Z^2PQ / \delta^2$$

[10]

where *N* = minimum sample size for a cross sectional prospective study design;

*Z* = the standard normal deviation corresponding to 95 % level of significance. The value obtained from the normal distribution table is 1.96. DEFF = estimated design effect = 1;

and *P* = prevalence rate; for BPH, prevalence rate is 21 % = 0.21 [11]; for CAP, prevalence rate is 13.3 % = 0.133 [3].

$$Q = (1 - P)$$

$\delta$  = absolute precision, i.e., the value required (in percentage points) which in actual term describes the maximum difference between the population rate and the sample rate that can be tolerated; taken for this study to be 10 % (0.01).

$$N = \frac{1.96^2 \times 0.21 \times 0.79}{0.1^2} = 64 \text{ (BPH);}$$

$$N = \frac{1.96^2 \times 0.13 \times 0.867}{0.1^2} = 44 \text{ (for CAP).}$$

Since two groups (BPH and CAP patients) were being compared in generating the PSAD cutoff level, the minimum sample size for this study is 64 for each group.

A total of 254 patients who met the inclusion criteria were recruited for the study while 80 patients were excluded. All patients who met the inclusion criteria that presented during the study period were recruited in the study. Diagnosis of prostatic disease in this study was both clinical and pathological. All subjects were evaluated using international prostate symptom score and digital rectal examination. They were screened by serum prostate-specific antigen (ELISA method using-DS-EIA PSA ELISA ITALY via xx Settembre).

**Table 1** Clinical characteristic of 254 patients who underwent prostate biopsy

	Number	Age (years)	PSA (ng/ml)	Prostate volume (mls)
BPH	157	64.04 ± 14.47	13.71 ± 17.46	93.06 ± 80.72
CAP	97	69.96 ± 11.67	49.86 ± 41.49	94.43 ± 52.11
T test		<i>P</i> = 0.0021*	<i>P</i> = 0.00*	<i>P</i> = 0.88

\*Significant *p* value

**Table 2** Clinical characteristic of 72 patients with “grey zone PSA” values who underwent prostate biopsy

	Number	Age (years)	PSA (ng/ml)	Prostate volume (mls)
BPH patients with intermediate PSA	57	66.25 ± 9.96	5.41 ± 1.77	102.93 ± 87.75
CAP patients with intermediate PSA	15	65.57 ± 20.55	7.06 ± 1.95	96.12 ± 52.42
T test		<i>P</i> = 0.86	<i>P</i> = 0.002*	<i>P</i> = 0.78

\**P* < 0.05 statistically significant

The patients subsequently had abdominopelvic ultrasound. Those with serum PSA above 4 ng/ml or abnormal digital rectal examination (DRE) findings or hypochoic lesion on ultrasound had transrectal prostate biopsy. Ten biopsies were taken using a disposable semi-automatic size 18GTrucut® biopsy needle, five from each prostate side. The specimen of the biopsy were put in a bottle and fixed in 10 % formalin and submitted to pathological department for hematoxylin-eosin staining. The findings were classified as adenocarcinoma or nodular hyperplasia. Histopathological studies were performed by the same pathologist.

The prostate volume was estimated by abdominopelvic ultrasound (a GE logic S expert 052128 model ultrasound) using a 3.5-MHz curvilinear scanner by a consultant radiologist. The PSAD were calculated for all patients by dividing the serum PSA by the prostate volume [12].

Justification for the use of ultrasound in determination of prostate volume was based on findings that have proven that there was no statistical difference in prostate volume measured by transrectal ultrasound compared to abdominopelvic ultrasound [13–16].

Based primarily on the histology results (except for ten subjects with clinical diagnosis of BPH), the subjects were placed into two groups; those with CAP and those with BPH.

The PSAD of the two groups were analysed to generate a PSAD cutoff level for Nigerian men. The PSAD cutoff

level was applied to the patients with “grey zone PSA.” These subset of patients had PSA between 4 and 10 ng/ml and also had normal DRE and ultrasound findings. Subsequently, the specificity and sensitivity of the newly generated PSAD was compared with the universally accepted PSAD cutoff level of 0.15 in this “grey zone PSA” group.

**Statistical methods**

For statistical analysis, STATA 13 (StataCorp LP, TX, USA) was used to determine correlation and mean of variables. The correlation among variables was determined by Pearson’s correlation coefficient; while linear regression was used to determine relationship between variables. The statistical program GraphPad Prism 5 software (GraphPad Software Inc., CA, USA) was used to demonstrate the best cutoff point for PSAD as well as to calculate its respective sensitivities and specificities to predict CAP. The receiver operating characteristics (ROC) curve was employed to graphically demonstrate the sensitivities and specificities of the PSAD. *P* < 0.05 statistically significant and with a 95 % confidence interval (CI).

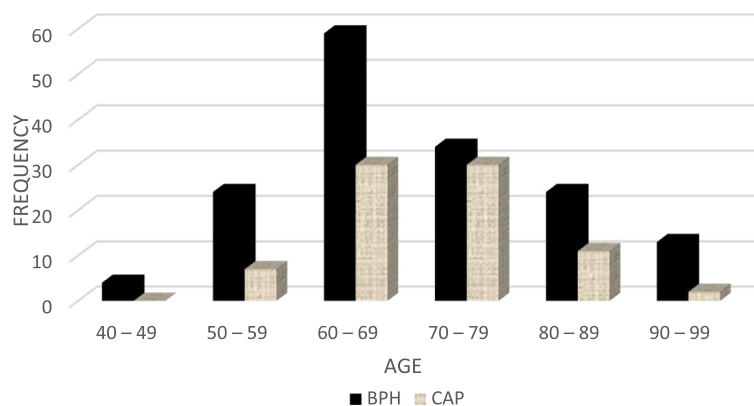
**Results**

This study took place between November 2009 and December 2012.

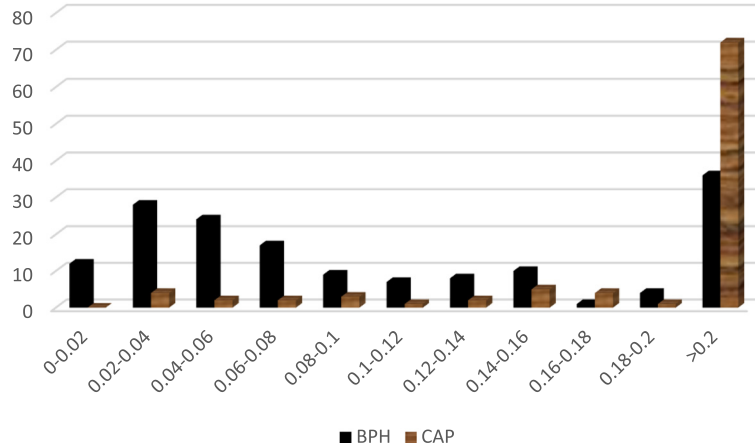
A summary of patient characteristics is presented in Table 1. Two hundred and fifty-four patients completed the study. Of the 254 patients, 157 patients had BPH, while 97 had CAP.

Table 2 shows the characteristics of 72 patients with “grey zone PSA” with normal DRE. There was no statistical difference between the mean prostate volume of patients with CAP and patients with BPH. The mean PSA values between the two groups differ significantly as reflected by the *P* value (0.002).

The ages of patients ranged between 40 and 99 years. Forty-six percent of patients were in the age range of 60–69 years (as shown in Fig. 1). Most of the patients



**Fig. 1** Age distribution of patients in the study



**Fig. 2** Variations in PSAD between patients with BPH and patients with CAP

with BPH were in the age range of 60–69 years, while for CAP, a greater percentage of patients were in the age range of 70–79 years.

Figure 2 shows the variation in PSAD. The BPH patients whose PSAD values were less than 0.08 outnumbered the patients with CAP. However, beyond PSAD value of 0.2 the reverse was the case.

Table 3 shows the mean PSAD value for BPH and CAP which were  $0.196 \pm 0.325$  and  $0.77 \pm 0.98$ , respectively. There was statistical difference between mean PSAD values of CAP and BPH.

Table 4 shows no statistical difference between mean PSAD values of BPH and CAP in the “grey zone PSA.”

The discriminating power to detect CAP as estimated by the ROC curve was 0.8177 for PSAD (area under the curve 0.8188; SD 0.02664; 95 % CI 0.7666–0.8710;  $P = 0.0001$ ).

Estimates for sensitivity and specificity for different PSAD cutoff points are shown in Fig. 3. The operation characteristics of PSAD at maximum discrimination cutoffs were computed. This was 0.04 for PSAD; the sensitivity was 95.88 % and specificity was 27.8 %.

In establishing the relationship of PSAD cutoff level with histology of patients using Pearson’s correlation coefficient, the correlation coefficient value was 0.31 with a  $P$  value of 0.00 as shown in Table 5.

Table 6 shows the performances of the two different PSAD cutoff levels in detecting CAP in patients with “grey zone PSA.” The sensitivity of the new PSAD cutoff

level (0.04) in detecting CAP in the “grey zone PSA” is 86.7 % compared to 33.3 % for the conventional PSAD cutoff level (0.15).

### Discussion

A total of two hundred and fifty-four (254) patients were recruited within the study period. They were all Nigerians from 45 to 99 years of age with mean PSA of  $13.71 \pm 17.46$  and  $49.86 \pm 41.49$  ng/ml for BPH and CAP patients, respectively. Although there was statistical difference in PSA between CAP and BPH, the mean prostate volume was not statistically different between the two groups. This implies that the difference in PSA would not be explained by the volume of the prostate; rather, the distortion in the basement membrane could be the likely explanation. Additionally, the mean prostate volume in our study comparatively was larger than the mean prostate volume recorded in similar studies among Caucasians [17]. However, it did not differ from the findings in a local study carried out by Ugwumba et al. [18] which showed a mean prostate volume of 100.7 mls. Similarly, a study of ultrasonic determination of prostate volume in Nigerian men with symptomatic BPH done by Badmus et al. [19] had revealed a mean prostate volume of 83.79 mls. Likewise, another study on peri-operative blood transfusion in open suprapubic transvesical prostatectomy: relationship with prostate volume and serum total prostate-specific antigen revealed a mean

**Table 3** Multi-variate analysis for all patients

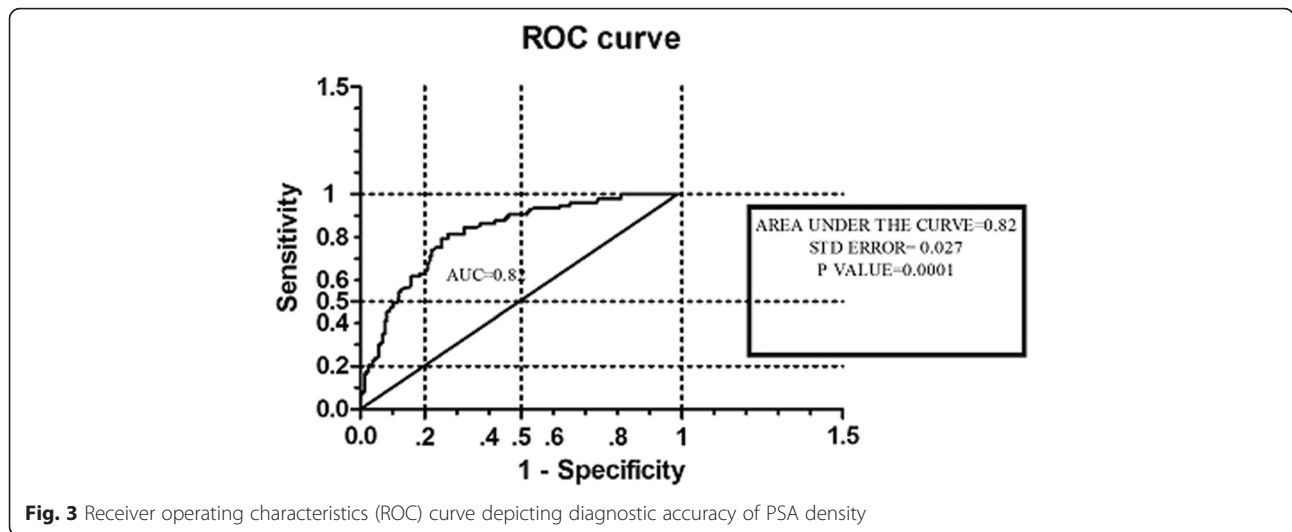
	Number	Mean PSAD	Median PSAD
BPH	157	$0.196 \pm 0.325$	0.076
CAP	97	$0.77 \pm 0.98$	0.42
T test		$P = 0.00^*$	

\* $P < 0.05$  statistically significant

**Table 4** Multi-variate analysis for patients with “grey zone PSA”

	Number	Mean PSAD	Median PSAD
BPH patients with “grey zone PSA” range	57	$0.081 \pm 0.065$	0.070
CAP patients with “grey zone PSA” range	15	$0.095 \pm 0.053$	0.071
T test		$P = 0.45$	

\* $P < 0.05$  statistically significant



prostate volume of 90.4 cm<sup>3</sup> for the Nigerian population [20]. These findings may suggest that our study population presented with significantly large prostatic volumes.

For PSAD levels below 0.08, patients with BPH appear to be more in number; beyond 0.2, those with CAP predominated. The operation characteristics of PSAD at maximum discrimination cutoffs were computed as 0.04 with sensitivity of 95.88 % and specificity of 27.8 %. The PSAD cutoff level of 0.04 was strongly positively correlated to the histology of subjects. The new PSAD cutoff level of 0.04 is more sensitive than the previously accepted PSAD cutoff level of 0.15 for detecting CAP when applied to patients with “grey zone PSA” who are symptomatic.

The observed variation in PSAD between BPH and CAP noted in this study seems to agree with earlier established facts that cancer of the prostate tend to produce more serum PSA than BPH. It is known that although benign prostatic tissue secretes more PSA per gram tissue, PSA is confined within the organ because of intact blood basement membrane barrier [21]. Conversely, though carcinoma of the prostate secretes less PSA per gram tissue compared to BPH, due to distorted blood basement membrane barrier, a greater portion of PSA is released in to the blood stream including the complex forms [22].

The ideal cutoff level of PSAD for detecting CAP has remained contentious in recent times. The previously

**Table 5** The relationship of PSAD cutoff level (0.04) with histology of patients

	Coefficient R value	SD error	P value
Pearson correlation coefficient	0.3097	–	0.00*
Linear regression	0.24	0.05	0.00*

\*P < 0.05 statistically significant

adopted cutoff level of 0.15 has come under vivacious criticism from many scholars. Lujan et al. [7] in their study, in which they dismissed the idea of using PSAD cutoff level of 0.15 for detecting CAP, reported that multivariate analysis failed to demonstrate any significant association between PSAD (based on cutoff level of 0.15) and biopsy results. Moreover, if the recommended cutoff of PSAD (>0.15) is used to prompt biopsy (instead of performing biopsies based solely on serum PSA level greater or equal to 4 ng/ml), as much as 30.6 % of the cancers would remain undetected. They proposed that PSAD cutoff level below 0.07 ng/ml/cc (100 % sensitive; 9 % specific) was most relevant in screening within the “grey zone PSA” range. Although, Lujan et al. concluded that PSAD was not relevant in screening patients in the grey zone PSA if the cutoff level of 0.15 was applied. They suggested that if 0.07 ng/ml/cc was applied, it would be more relevant. This agrees with our findings which suggested that a PSAD cutoff level 0.04 ng/ml/cc would be more relevant in screening within the “grey zone PSA” than the recommended cutoff level (>0.15 ng/ml/cc).

**Table 6** Performance of the PSAD cutoff levels in screening 72 patients with “grey zone PSA” (4–10 ng/ml)

PSAD cutoff levels	0.15	0.04
Sensitivity	33.3 %: 95 % CI (20–41 %)	86.7 %: 95 % CI (58–98 %)
Specificity	85.7 %: 95 % CI (77–95 %)	20 %: 95 % CI (10–33 %)
Positive predictive value	38.2 %	22.4 %
Negative predictive value	82.8 %	84.9 %
Positive likelihood ratio	2.33: 95 % CI (0.89–6.12)	1.08: 95 % CI (0.85–1.37)
Negative likelihood ratio	0.78: 95 % CI (0.54–1.13)	0.68: 95 % CI (0.17–2.7)



This opinion was shared by Benson et al. [23] who in their study conducted on 61 patients reported that only two patients in the subset of CAP had a PSAD of less than 0.05, and none of the patients with BPH had a PSAD greater than 0.117. Based on this, they concluded that a PSAD of greater than 0.15 was abnormal. These studies affirmed that PSAD cutoff level of 0.15 ng/ml/cc will not be relevant for screening. This explains why PSAD was jettisoned as a tool for screening patients with “the grey zone PSA.” However, adopting a PSAD cutoff level of 0.04 ng/ml/cc generated a high sensitivity of 95.88 % which made it more appropriate for screening.

Most studies in support of using PSAD to evaluate patients with “grey zone PSA” suggested a PSAD cutoff level of 0.15 [24–26]. One of such recent studies was done by Sfoungaristos et al. [27] in which they estimated an optimal cutoff value of PSA density to be 0.15. This was derived by ROC analysis (area under the curve 0.643,  $P = 0.001$ , 95 % CI 0.568–0.755). Comparing this with our study, the area under the curve of the ROC (area under the curve 0.8188; SD 0.02664; 95 % CI 0.7666–0.8710;  $P = 0.0001$ ) in our study is different from the generated value in their study, it appeared that selection of PSAD cutoff level in Sfoungaristos et al. [27] study was based mainly on specificity without establishing a convenient tradeoff between sensitivity and specificity. Although, a high specificity will reduce false positive results, thereby reducing unnecessary prostate biopsy; a low sensitivity creates the problem of missing out patients with cancer which is more harmful and damaging to management protocol for CAP. Additionally, it increases the cost of management of the disease and the burden of missing out a patient with CAP far outweighs the advantage of reducing unnecessary prostate biopsy. As such, a balanced tradeoff between sensitivity and specificity must be adopted in deriving a cutoff level for PSAD in order to limit this flaw. In our study, this was put into consideration in deriving the PSAD cutoff level. The performance of the PSAD cutoff level generated in our study, which showed a higher sensitivity than the internationally accepted PSAD cutoff level for patients with “grey zone PSA” (86.7 % and 20 % respectively), attests to the advantage of attaching more weight to sensitivity than specificity in generating PSAD cutoff levels.

The new PSAD cutoff level of 0.04 generated in this study is more appropriate for evaluating patients with symptomatic prostatic enlargement. It may aid the urologist in making decisions for patients with “grey zone PSA.” This may reduce unnecessary prostate biopsy. These findings necessitate a more extensive multi-center study with emphasis on a more balanced tradeoff between sensitivity and specificity in deriving the most appropriate PSAD cutoff level. Perhaps, PSAD may become more

relevant in the armamentarium of the urologist in decision-making for cancer patients.

In summary, Nigerian men present with large prostatic volumes compared to Caucasians. It is documented that blacks secrete more PSA per unit tissue than Caucasians [5], implying that large prostate volume may lead to slightly elevated PSA. As such, PSAD estimation will be relevant to our population. Depending on PSAD cutoff level with high sensitivity appears to be relevant for screening unlike PSAD cutoff level with specificity.

#### **Strengths and limitations of this study**

There is a possibility of missed cancers in the grey zone PSA belt as a result of biopsy selection method.

The obvious trade-off of diagnostic testing of reduced specificity as sensitivity is increased would increase the number of patients subjected to unnecessary prostate biopsy.

The sample population is heterogeneous.

#### **Conclusions**

In conclusion, the PSAD cutoff level generated for Nigerian men in this study is 0.04 which is relatively different from international consensus. This PSAD cutoff level has a positive correlation with histology and could detect patients with CAP who have “grey zone PSA.”

#### **Abbreviations**

BPH, benign prostatic hyperplasia; CAP, carcinoma of the prostate; PSAD, prostate-specific antigen density

#### **Acknowledgements**

I wish to appreciate Dr. Emmanuel Affusim's assistance in the data collection during the study.

#### **Funding**

This research received no specific grant from any funding agency in the public, commercial, or not-for-profit sectors.

#### **Availability of data and materials**

DOI 10.5281/zenodo.50710.

#### **Authors' contributions**

EIU, IIN, OFN, FOU, SOA, RSO, and KNE revised the work critically for important intellectual content. EIU analyzed the work. All authors contributed substantially to the conception and design of the work and acquisition and interpretation of the data and have approved the final version of the work to be published.

#### **Competing interests**

Authors hereby declare that there is no conflict of interest. Research was solely funded by the principal/corresponding author.

#### **Ethics approval and consent to participate**

Ethical clearance for the study was obtained from ESUT Teaching Hospital Park Lane Ethical committee. (ref.: ENSUTHP/PF1363/200).

Written informed consent for publication of their clinical details was obtained from the patient. A copy of the consent form is available for review by the Editor of this journal.

**Declarations**

We hereby declare that the manuscript is original and has not been submitted to any journal for publication.

**Author details**

<sup>1</sup>Department of Surgery, University of Nigeria, Enugu, Nigeria. <sup>2</sup>Department of Pathology, ESUT University Teaching Hospital, Park Lane, Enugu, Nigeria. <sup>3</sup>Department of Radiology, University of Nigeria Teaching Hospital, Enugu, Nigeria. <sup>4</sup>Department of Surgery, University of Nigeria Teaching Hospital, Enugu, Nigeria. <sup>5</sup>Department of Surgery, Faculty of medicine, College of medicine, University of Nigeria, Enugu, Nigeria.

Received: 24 August 2015 Accepted: 14 June 2016

Published online: 29 June 2016

**References**

- Osegbe D. Prostate cancer in Nigerians: facts and nonfacts. *J Urol*. 1997;157(4):1340–3.
- Eke NSMK. Prostate cancer in Portharcourt, Nigeria; features and outcomes. *Niger J Surg Res*. 2002;4:34–44.
- Ezenwa ETK, Jeje A, Ogunjimi A, Ojewola R. Prevalence of prostate cancer among nigerians with intermediate total prostate specific antigen levels (4–10ng/ml): experience at Lagos University Teaching Hospital, Nigeria. *Internet J Urol*. 2012;9:3.
- Gupta A, Aragaki C, Gotoh M, Masumori N, Ohshima S, Tsukamoto T, et al. Relationship between prostate specific antigen and indexes of prostate volume in Japanese men. *J Urol*. 2005;173(2):503–6.
- Moul JW, Connelly RR, Mooneyham RM, Zhang W, Sesterhenn I, Mostofi F, et al. Racial differences in tumor volume and prostate specific antigen among radical prostatectomy patients. *J Urol*. 1999;162(2):394–7.
- Basinet M, Meshref AW, Trudel C, Aronson S, Peloquin F, Nachabe M, et al. Prospective evaluation of prostate specific antigen density and systematic biopsies for early detection of prostatic carcinoma. *Urology*. 1994;43:44–51.
- Lujan M, Paez A, Llanes L, Miravalles E, Berenguer A. Prostate specific antigen density. Is there a role for this parameter when screening for prostate cancer? *Prostate Cancer Prostatic Dis*. 2001;4(3):146–9.
- Guess HAHJ, Gormley GJ. The effect of finasteride on prostate-specific antigens in men with benign prostatic hyperplasia. *Prostate*. 1992;22(3):37.
- Roehrborn CGBP, Nickel JC. Efficacy and safety of a dual inhibitor of 5 alpha-reductase types 1 and 2 (dutasteride) in men with benign prostatic hyperplasia. *Urology*. 2002;60:434–41.
- Araoye OM. Research methodology with statistics for health and social sciences. Ilorin: Nathadex Publishers; 2003.
- Yeboah ED. The prostate gland. 3rd ed. Principles and practice of surgery including pathology in the tropics. Ghana: Ghana Publishing Corporation; 2000.
- Benson M, Whang IS, Olsson C, McMahon D, Cooner W. The use of prostate specific antigen density to enhance the predictive value of intermediate levels of serum prostate specific antigen. *J Urol*. 1992;147(3 Pt 2):817–21.
- Prassopoulos P, Charoulakis N, Anezinis P, Daskalopoulos G, Cranidis A, Gourtsoyiannis N. Suprapubic versus transrectal ultrasonography in assessing the volume of the prostate and the transition zone in patients with benign prostatic hyperplasia. *Abdom Imaging*. 1996;21(1):75–7.
- Watanabe T, Miyagawa I. New simple method of transabdominal ultrasound to assess the degree of benign prostatic obstruction: size and horizontal shape of the prostate. *Int J Urol*. 2002;9(4):204–9.
- Henneberry M, Carter MF, Neiman HL. Estimation of prostatic size by suprapubic ultrasonography. *J Urol*. 1979;121(5):615–6.
- Ibinaye POAAO, Obajimi MO. Comparative evaluation of prostatic volume by transabdominal and transrectal ultrasonography in patients with prostatic hypertrophy in Ibadan. *Eur J Sci Res*. 2005;10:1–2.
- Manieri C, Carter SS, Romano G, Trucchi A, Valenti M, Tubaro A. The diagnosis of bladder outlet obstruction in men by ultrasound measurement of bladder wall thickness. *J Urol*. 1998;159(3):761–5.
- Ugwumba FO, Ozoemena OF, Okoh AD, Echetabu KN, Mbadie OM. Transvesical prostatectomy in the management of benign prostatic hyperplasia in a developing country. *Niger J Clin Pract*. 2014;17(6):797–801. doi:10.4103/1119-3077.144402.
- Badmus TA, Asaley CM, Badmus SA, Takure AO, Ibrahim MH, Arowolo OA. Benign prostate hyperplasia: average volume in southwestern Nigerians and correlation with anthropometrics. *Niger Postgrad Med J*. 2012;19(1):15–8.
- Nnabugwu II, Eniwwenae OA, Amrasa AO, Okpara AL. Peri-operative blood transfusion in open suprapubic transvesical prostatectomy: relationship with prostate volume and serum total prostate specific antigen (TPSA). *Niger J Med*. 2012;21(4):450–4.
- Meng FJSA, Jin L, Young CY. The expression of a variant prostate-specific antigen in human prostate. *Cancer Epidemiol Biomarkers Prev*. 2002;11:305–9.
- Stamey TA, Yang N, Hay AR, McNeal JE, Freiha FS, Redwine E. Prostate-specific antigen as a serum marker for adenocarcinoma of the prostate. *N Engl J Med*. 1987;317(15):909–16.
- Guess HA, Heyse JF, Gormley GJ. The effect of finasteride on prostate-specific antigen in men with benign prostatic hyperplasia. *Prostate*. 1993;22(1):31–37.
- Arai Y, Maeda H, Ishitoya S, Okubo K, Okada T, Aoki Y. Prospective evaluation of prostate specific antigen density and systematic biopsy for detecting prostate cancer in Japanese patients with normal rectal examinations and intermediate prostate specific antigen levels. *J Urol*. 1997;158(3):861–4.
- Bazinnet M, Meshref AW, Trudel C, Aronson S, Pélouquin F, Nachabe M, et al. Prospective evaluation of prostate-specific antigen density and systematic biopsies for early detection of prostatic carcinoma. *Urology*. 1994;43(1):44–51.
- Allan RW, Sanderson H, Epstein JI. Correlation of minute (0.5 mm or less) focus of prostate adenocarcinoma on needle biopsy with radical prostatectomy specimen: role of prostate specific antigen density. *J Urol*. 2003;170(2 Pt 1):370–2. doi:10.1097/01.ju.0000074747.72993.cb.
- Sfoungaristos S, Katafigiotis I, Perimenis P. The role of PSA density to predict a pathological tumour upgrade between needle biopsy and radical prostatectomy for low risk clinical prostate cancer in the modified Gleason system era. *Can Urol Assoc J*. 2013;7(11-12):E722.

Submit your next manuscript to BioMed Central and we will help you at every step:

- We accept pre-submission inquiries
- Our selector tool helps you to find the most relevant journal
- We provide round the clock customer support
- Convenient online submission
- Thorough peer review
- Inclusion in PubMed and all major indexing services
- Maximum visibility for your research

Submit your manuscript at  
www.biomedcentral.com/submit

