



Published in final edited form as:

Oncogene. 2016 August 18; 35(33): 4414–4421. doi:10.1038/onc.2015.490.

p19^{Arf} is required for the cellular response to chronic DNA damage

Kathryn T. Biegging-Rolett¹, Thomas M. Johnson¹, Colleen A. Brady¹, Veronica G. Beaudry¹, Navneeta Pathak¹, Shuo Han¹, and Laura D. Attardi^{1,2,3}

¹Division of Radiation and Cancer Biology, Department of Radiation Oncology, Stanford University School of Medicine, Stanford, CA 94305

²Department of Genetics, Stanford University School of Medicine, Stanford, CA 94305

Abstract

The p53 tumor suppressor is a stress sensor, driving cell-cycle arrest or apoptosis in response to DNA damage or oncogenic signals. p53 activation by oncogenic signals relies on the p19^{Arf} tumor suppressor, while p53 activation downstream of acute DNA damage is reported to be p19^{Arf}-independent. Accordingly, p19^{Arf}-deficient mouse embryo fibroblasts (MEFs) arrest in response to acute DNA damage. However, p19^{Arf} is required for replicative senescence, a condition associated with an activated DNA damage response, as p19^{Arf}^{-/-} MEFs do not senesce after serial passage. A possible explanation for these seemingly disparate roles for p19^{Arf} is that acute and chronic DNA damage responses are mechanistically distinct. Replicative senescence may result from chronic, low-dose DNA damage responses in which p19^{Arf} has a specific role. We therefore examined the role of p19^{Arf} in cellular responses to chronic, low-dose DNA damaging agent treatment by maintaining MEFs in low oxygen and administering 0.5 Gy γ -irradiation daily or 150 μ M hydroxyurea, a replication stress-inducer. In contrast to their response to acute DNA damage, p19^{Arf}^{-/-} MEFs exposed to chronic DNA damage do not senesce, revealing a selective role for p19^{Arf} in senescence upon low-level, chronic DNA damage. We show further that p53 pathway activation in p19^{Arf}^{-/-} MEFs exposed to chronic DNA damage is attenuated relative to wild-type MEFs, suggesting a role for p19^{Arf} in fine-tuning p53 activity. However, combined Nutlin3a and chronic DNA damaging agent treatment is insufficient to promote senescence in p19^{Arf}^{-/-} MEFs, suggesting that the role of p19^{Arf} in the chronic DNA damage response may be partially p53-independent. These data suggest the importance of p19^{Arf} for the cellular response to the low-level DNA damage incurred in culture or upon oncogene expression, providing new insight into how p19^{Arf} serves as a tumor suppressor. Moreover, our study helps reconcile reports suggesting crucial roles for both p19^{Arf} and DNA damage signaling pathways in tumor suppression.

Users may view, print, copy, and download text and data-mine the content in such documents, for the purposes of academic research, subject always to the full Conditions of use:http://www.nature.com/authors/editorial_policies/license.html#terms

³Corresponding author: CCSR-South, Room 1255, 269 Campus Drive, Stanford, CA 94305-5152, Telephone: 650-725-8424, Fax: 650-723-7382, attardi@stanford.edu.

Conflict of interest: The authors declare no conflict of interest.

Keywords

chronic DNA damage; acute DNA damage; p53; p19^{Arf}; tumor suppression

Introduction

It has long been appreciated that mammalian cells undergo a permanent growth arrest response, termed cellular senescence, upon continued propagation in culture. In addition, cells can be driven to undergo an accelerated senescence response upon expression of select oncogenes. Both of these responses provide safeguard mechanisms against neoplasia, by blocking proliferation either in suboptimal growth conditions or in response to inappropriate proliferative signals. The importance of senescence in tumor suppression is underscored by the fact that both senescence responses are critically dependent on the p53 tumor suppressor, as well as its positive regulator, the Arf tumor suppressor, which acts to stabilize p53 through sequestration of the Mdm-2 ubiquitin ligase. Both p19^{Arf}- and p53-deficient mouse fibroblasts are immortal, failing to undergo senescence upon passaging in culture or in response to expression of oncogenes such as activated Ras¹.

Although one of the major cues that signals senescence with increasing passage of human cells is the attrition of telomeres, senescence-activating signals in mouse cells, which typically have long telomeres >20 kb, have remained less clear^{2, 3}. Senescence in mouse fibroblast cells has been correlated with high oxygen tension, as maintenance of cultures in low oxygen inhibits activation of the senescence program, either with increasing passage or with expression of oncogenes such as activated Ras⁴⁻⁷. Oxidative stress in fact not only contributes to senescence in mouse cells but also in human cells, as treatment of activated Ras-expressing human fibroblasts with scavengers of reactive oxygen species (ROS), such as N-acetyl cysteine, inhibits senescence⁶, implicating ROS in the senescence response. As one of the major consequences of ROS accumulation is the induction of DNA strand breaks, the senescence induced under high oxygen tension is likely at least partially triggered by DNA damage^{7, 8}. This notion has been supported by the observation that oncogene-induced senescence relies on components of the DNA damage-signaling cascade, including Atm and Chk2⁹⁻¹¹.

While the idea that a DNA damage signal induces senescence is consistent with the known requirement of p53, a sensor of DNA damage, this model does not account for the participation of p19^{Arf}, which has been reported to be dispensable for the response of cells to DNA damage^{1, 12-15}. One possible explanation for this discrepancy is that the studies examining the role of p19^{Arf} and p53 in the DNA damage response have typically been done *in vitro* through exposure of cells to a single, high dose of a particular genotoxin (i.e. 5-20 Gy γ -irradiation), which elicits a rapid cellular response, typically within 24 hours¹⁶⁻¹⁸. In contrast, the DNA damage driving senescence in cultured cells is chronic, low-level damage. Likewise, the DNA damage encountered during tumor development is not due to a single, acute genotoxic insult but rather continual, low-level genomic damage caused by unscheduled DNA replication and consequent replication fork collapse, telomere attrition, and increased ROS levels resulting from enhanced metabolic activity or hypoxia/

reperfusion^{6, 19-24}. Thus, examining the mechanisms underlying responses to lower levels of chronic DNA damage, rather than a high acute dose, will likely provide a more accurate picture of how p53 acts to suppress cancer *in vivo*.

Here, we leverage a widely utilized mouse embryonic fibroblast (MEF) model system to examine the roles of p53 and p19^{Arf} in the cellular responses to acute high dose and chronic low-dose DNA damage. To allow controlled exposure to exogenous DNA damage, we grow cells in low oxygen conditions to mitigate the effects of culture shock. Interestingly, we find that while both wild-type and p19^{Arf}^{-/-} fibroblasts undergo cell-cycle arrest upon exposure to a single high dose of a DNA-damaging agent, wild-type cells also undergo cell-cycle arrest upon chronic treatment with a low-dose DNA-damaging agent, but p19^{Arf}^{-/-} fibroblasts fail to do so. These findings suggest that p19^{Arf} is critical for the response to the low-level DNA damage incurred under culture conditions or upon oncogene expression and provide new insight into replicative senescence. Importantly, our findings also help reconcile the contradiction that various genetic studies have shown that the response of p53 to acute DNA damage is dispensable for tumor suppression while other studies have shown that DNA damage signals are observed in early tumors and suggested that these signals are important for p53-mediated tumor suppression^{20, 21, 25, 26}. Our observations suggest a mechanistic difference in the p53-dependent pathways leading to senescence/tumor suppression in response to acute and chronic DNA damage signals, in terms of the contribution of p19^{Arf}. Our findings thus refine our understanding of p53-mediated tumor suppression by indicating that while p53's ability to respond acute DNA damage is dispensable for tumor suppression, its ability to drive responses to chronic DNA damage may be crucial, providing significant new insight into both senescence and tumor suppression.

Results and Discussion

Establishing assays for acute and chronic DNA damage responses

To study the cellular response to chronic, low-dose DNA damage, it was first necessary to develop assays for chronic and acute DNA damage responses. We defined an acute DNA-damaging agent as one where a single, high dose treatment triggers rapid cell-cycle arrest and a low-dose DNA-damaging agent as one where a single treatment fails to cause a proliferative arrest. Treatment with the DNA double-strand break inducer doxorubicin or 12 Gy γ -irradiation allows examination of acute DNA damage responses, as wild-type mouse embryonic fibroblasts (MEFs) respond to these treatments by undergoing proliferative arrest 24 hours after treatment (Figure 1A). In contrast, exposure to 0.5 Gy γ -irradiation, or to 150 μ M hydroxyurea (HU) -- a ribonucleotide reductase inhibitor and inducer of replication stress, a type of stress encountered by developing cancer cells^{11, 27} -- does not induce cell-cycle arrest, as BrdU incorporation is similar to untreated cells 24 hours after treatment (Figure 1A). To correlate arrest responses with p53 activity, we assessed p53 stabilization and transcriptional activity under these conditions. While doxorubicin induced robust p53 protein stabilization after 8 hours, 12 Gy γ -irradiation produced more modest p53 stabilization (Figure 1B). Both treatments, however, induced expression of the p53 target genes *p21*, and *Mdm2* two hours after treatment (Figure 1C). In contrast, 0.5 Gy γ -

irradiation or 150 μ M hydroxyurea did not induce significant p53 target gene expression (Figure 1B, 1C). Thus, activation of cell-cycle arrest in wild-type MEFs correlates strongly with transactivation of target genes.

While acute DNA damage treatment has been a useful tool to study the mechanisms of p53 activity in cell-cycle arrest and senescence, the response to chronic, low-level DNA damage may represent a more accurate model for how p53 is induced in incipient tumor cells *in vivo*. Simply culturing primary MEFs *ex vivo* triggers a DNA damage response and replicative senescence after several passages, which is thought to result from oxidative stress that accumulates in the presence of 20% atmospheric oxygen. Accordingly, primary MEFs cultured in physiological oxygen levels (2-5%) do not activate a DNA damage response or undergo replicative senescence^{7, 8}. To ensure that the responses we measured were the result of the specified treatments and not damage triggered by growth at high oxygen tension, and because the differences between culturing cells at atmospheric and physiologic oxygen levels has not been analyzed systematically, we examined the cell-cycle arrest responses to treatment with acute or low-dose DNA damaging agents in cells cultured in 2% oxygen. Similarly to standard culture conditions, wild-type MEFs maintained in 2% oxygen and treated with 0.2 μ g/ml doxorubicin or 12 Gy γ -irradiation underwent cell-cycle arrest 24 hours after treatment and displayed *p21* and *Mdm2* induction two hours post-treatment, while treatment with the lower dose of 0.5 Gy γ -irradiation or with 150 μ M hydroxyurea did not trigger cell-cycle arrest or target gene induction (Figure 1D, F). Cells maintained 2% oxygen also displayed p53 protein levels similar to cells at 20% oxygen after the various treatments, with a slight attenuation of p53 accumulation after doxorubicin treatment (Figure 1E). Analysis of Histone H2AX phosphorylation (γ H2AX), a marker of DNA double stranded breaks, verified that DNA damage is present after both the acute and low-dose treatments, as numerous γ H2AX foci were observed by immunofluorescence in wild-type MEFs 30 minutes after treatment with 0.2 μ g/ml doxorubicin, 12 Gy γ -irradiation or 0.5 Gy γ -irradiation (Figure 1G)^{28, 29}. These experiments thus establish a novel model system in which to study the chronic, low-dose DNA damage response in MEFs.

p19^{Arf} is dispensable for the response to acute DNA damage

To elaborate the role of p19^{Arf} in the DNA damage response, we first compared the responses of wild-type, *p53*-null, and *p19^{Arf}*-null MEFs maintained in 2% oxygen to acute DNA damage (Figure 2A). 24 hours after treatment with 0.2 μ g/ml doxorubicin or 12 Gy γ -irradiation, wild-type MEFs underwent a clear proliferative arrest and ultimately senesced, as assessed by expression of senescence-associated β -galactosidase (SA- β -gal) ten days post-treatment (Figure 2B). As expected, *p53*-null MEFs were unable to mount a response to acute DNA damage, and showed only a mild decrease in proliferation following doxorubicin treatment. In contrast, MEFs deficient for *p19^{Arf}* but retaining wild-type *p53*, underwent a proliferative arrest 24 hours after doxorubicin or 12 Gy γ -irradiation treatment, followed by senescence ten days later (Figure 2B). These data suggest that p19^{Arf} is dispensable for acute DNA damage responses¹⁸.

p19^{Arf} is required for the response to chronic, low-dose DNA damage

We next assessed whether p19^{Arf} might contribute to the cellular response to chronic, low-dose DNA-damaging agent treatment. Toward this end, we grew wild-type MEFs in 2% oxygen, treated them daily with 0.5 Gy γ -irradiation and measured proliferation at several time points (Figure 2C). After ten days of treatment, wild-type MEFs underwent a complete cell-cycle arrest accompanied by SA- β -gal positivity (Figure 2D). Importantly, untreated wild-type MEFs maintained in 2% oxygen showed only a slight reduction in proliferation over the ten-day time course (Figure 2E), indicating that the senescence response in treated wild-type MEFs is due to daily 0.5 Gy γ -irradiation and not simply the result of any residual culture shock in a 2% oxygen environment. In contrast to wild-type MEFs, *p53*-null cells showed no evidence for cell-cycle arrest or senescence after ten days of daily γ -irradiation. Interestingly, in response to chronic, low-dose irradiation, *p19^{Arf}*-deficient MEFs behaved similarly to *p53*-null cells, and neither mounted a cell-cycle arrest response nor displayed senescence marker positivity after ten days of daily 0.5 Gy γ -irradiation (Figure 2D). These findings indicate that p19^{Arf} is critical for the cell-cycle arrest response to chronic, low-dose DNA damage.

To generalize our results using a mimic of the physiological stress of replication fork collapse, we extended our analysis to HU. Prolonged exposure to HU has been shown to promote cell-cycle arrest³⁰, and, indeed, wild-type MEFs exposed to 150 μ M HU exhibited a significant reduction in BrdU incorporation after seven days and senescence after ten days (Figure 2F). In the same time period, *p53*-null cells did not mount a significant cell-cycle arrest response. Similarly, the ability of *p19^{Arf}*-deficient MEFs to undergo cell-cycle arrest and senescence in response to chronic HU treatment was largely compromised (Figure 2F), confirming a role for p19^{Arf} in the response to chronic, low-dose DNA damage.

The role of p53 in the chronic DNA damage response in p19^{Arf} null cells

The classical role for p19^{Arf} downstream of oncogene activation is stabilization of p53 via inhibition of the negative regulator Mdm2. The same molecular mechanism could underlie the role of p19^{Arf} in the response to chronic, low-dose DNA damage. Alternatively, the chronic DNA damage response could occur through a mechanistically distinct pathway, in which the role for p19^{Arf} is independent of p53. To begin to distinguish these possibilities, we assessed p53 protein stabilization in wild-type and *p19^{Arf}*^{-/-} MEFs after four days of daily 0.5 Gy γ -irradiation treatment, before we observe an arrest response. Interestingly, while basal p53 levels are notably lower in *p19^{Arf}*^{-/-} MEFs than in wild-type MEFs, as observed previously¹⁸, after four days of chronic DNA damaging agent treatment, p53 levels in *p19^{Arf}*^{-/-} MEFs approach levels in wild-type MEFs (Figure 3A). These data suggest that the inability of *p19^{Arf}*^{-/-} MEFs to senesce in response to chronic DNA damage is not due to a complete lack of p53 stabilization. To further probe the p53-dependence of the role of p19^{Arf} in the chronic DNA damage response, we examined the expression of p53 target genes after four days of daily 0.5 Gy γ -irradiation treatments. First, we found that wild-type MEFs maintained at 2% O₂ displayed increased expression of p53 target genes upon chronic DNA-damaging agent treatment (Figure 3B). Second, and consistent with the observed increase in p53 protein stability upon chronic DNA damage exposure, we also observed increased expression of *p21*, *Mdm2* and *Ccng1* in *p19^{Arf}*-null MEFs treated with chronic

damage relative to untreated *p19^{Arf}*-deficient cells, while these transcripts were not induced in *p53*-null MEFs (Figure 3B). Taken together, these data demonstrate that the p53 pathway is quite functional in *p19^{Arf}*-null MEFs subjected to a chronic, low-dose DNA damaging agent treatment, suggesting that complete disruption of the p19^{Arf}-p53 axis does not underlie the failure to undergo senescence that we observed in *p19^{Arf}*-null cells. However, the extent of p53 accumulation and p53 target gene activation in *p19^{Arf}*-null cells is slightly reduced relative to wild-type cells, suggesting that the ability of p19^{Arf} to “fine tune” p53 responses and stimulate full p53 induction contributes to the chronic DNA damage response.

We reasoned that if the p19^{Arf}-p53 axis underlies the role of p19^{Arf} in the response to chronic DNA damage, we could activate p53 downstream of p19^{Arf} and promote cell-cycle arrest in *p19^{Arf}*^{-/-} cells. Conversely, if p53 activation in *p19^{Arf}*^{-/-} cells fails to promote cell-cycle arrest in response to chronic damage, then some other p53-independent mechanism must be required for p19^{Arf} function in this context. To distinguish these models, we used the p53 activator Nutlin3a. As an inhibitor of the p53-Mdm2 interaction, Nutlin3a liberates p53 to trigger target gene activation and cell-cycle arrest³¹. We treated MEFs with 1μM Nutlin3a, a dose that we found could promote cell-cycle arrest or senescence in wild-type MEFs, but only when combined with chronic γ-irradiation, indicating that the arrest depends on the chronic DNA damaging agent treatment. In contrast, *p53*-null MEFs did not mount an arrest or senescence response, indicating that this cell-cycle arrest response is p53-dependent (Figure 4A-B). Although wild-type MEFs treated with the vehicle control (DMSO) and subjected to daily 0.5 Gy γ-irradiation treatments underwent a statistically significant arrest and senesced after ten days of treatment, combination treatment with both 1μM Nutlin3a and 0.5 Gy γ-irradiation daily triggered a more potent cell-cycle arrest in wild-type MEFs. This cell-cycle arrest, in contrast to that triggered by daily 0.5 Gy γ-irradiation alone, was statistically significant by day four, and also promoted senescence by day ten (Figure 4A, Supplemental Figure 1). Interestingly, *p19^{Arf}*-deficient cells did not display appreciable cell-cycle arrest or senescence when treated with both 1μM Nutlin3a and daily low-dose irradiation (Figure 4A, Supplemental Figure 1). p53 protein levels were not substantially different between the wild-type and *p19^{Arf}*^{-/-} samples, suggesting that gross variations in p53 stabilization do not appear to underlie the differences between the observed phenotypes in these two genotypes (Figure 4B).

Collectively, our observations provide genetic evidence that p19^{Arf} is dispensable for the acute DNA damage response but plays a critical role in the response to chronic, low level DNA damage. Notably, we do not observe significant induction of *p19^{Arf}* upon exposure of cells to chronic DNA damage, either at the mRNA level or at the protein level, as assessed by analysis of p19^{Arf} localization to nucleoli, where it is stable and active³² (Supplemental Figure 2). Therefore, although p19^{Arf} is important for the response to chronic DNA damage, it is not clearly upregulated by such signals. The notion that p19^{Arf} is important for the chronic DNA damage response is supported by other studies. For example, one study reported a partial impairment in the DNA damage response in *p19^{Arf}*-deficient MEFs¹⁸. Moreover, Arf depletion in *Brca2*-deficient MEFs or human cells rescued senescence³³ and deletion of the *Ink4a/Arf* locus (both p19^{Arf} and p16^{Ink4a}) rescued premature senescence in cells with a hypomorphic ATR mutation, which induces DNA damage and replication fork collapse³⁴. In addition, although p19^{Arf} acts at least in part by promoting the efficient

activation of p53, our experiments using Nutlin3a in combination with chronic low-dose irradiation suggest the possibility of a p53-independent role for p19^{Arf} in the response to chronic DNA damage (Figure 4C). Numerous activities beyond p53 regulation have been described for p19^{Arf}, including regulating superoxide production³⁵, ribosomal biogenesis³⁶ and sumoylation of interacting proteins³⁷. Analysis of such Arf functions in the responses to chronic, low-level DNA damage will be a very interesting avenue for future investigation.

Here, we leverage the widely used primary MEF model to better understand the contribution of p19^{Arf} to senescence and tumor suppression in response to chronic, low-dose DNA damage. Evidence for an activated DNA damage response has been found in developing human tumors, leading to a model in which oncogenic signaling induces DNA replication stress and double strand breaks, engendering a DNA damage response that triggers p53 activation^{20, 21, 25}. DNA damage signals are complemented by oncogene-mediated activation of Arf to promote senescence and suppress tumorigenesis, through p53 activation and/or p53-independent functions of Arf²⁶. Our studies provide additional insight into how incipient tumor cells can activate the p19^{Arf}-p53 suppressor axis as a result of the chronic DNA damage they sustain, illuminating a link between the activated DNA damage response observed in nascent tumors and the functional requirement for p19^{Arf} in tumor suppression. Notably, several studies using mouse models have suggested that the p53 acute DNA damage response is dispensable for tumor suppression^{12, 13, 38-41}, a notion seemingly at odds with the presence of activated components of the DNA damage response cascade seen in human tumors. Our results resolve this discrepancy by suggesting that the response to chronic, low level DNA damage is a p19^{Arf}-dependent mechanism that is distinct from the response to acute DNA damage and may be particularly important for p53-mediated tumor suppression. Continued investigation into the complex interplay between the DNA damage response, Arf, and tumor suppression – an ever-evolving area^{42, 43} – will ultimately help decipher key tumor suppressor pathways.

Supplementary Material

Refer to Web version on PubMed Central for supplementary material.

Acknowledgments

We thank Dr. Charles Sherr for the kind gift of the p19^{Arf} antibody and Nitin Raj and Margot Bowen for critical reading of the manuscript. K.B.R. is funded by an American Cancer Society postdoctoral fellowship 122767-PF-12-195-01-TBG. This work was supported by funding from the American Cancer Society (RSG-06-065-01-MGO), the Leukemia and Lymphoma Society (LLS-1012-09), and the National Institutes of Health (CA140875) to L.D.A.

References

1. Kamijo T, Zindy F, Roussel MF, Quelle DE, Downing JR, Ashmun RA, et al. Tumor suppression at the mouse INK4a locus mediated by the alternative reading frame product p19ARF. *Cell*. 1997; 91:649–659. [PubMed: 9393858]
2. Sherr CJ, DePinho RA. Cellular senescence: mitotic clock or culture shock? *Cell*. 2000; 102:407–410. [PubMed: 10966103]
3. Campisi J, d'Adda di Fagagna F. Cellular senescence: when bad things happen to good cells. *Nat Rev Mol Cell Biol*. 2007; 8:729–740. [PubMed: 17667954]

4. Packer L, Fuehr K. Low oxygen concentration extends the lifespan of cultured human diploid cells. *Nature*. 1977; 267:423–425. [PubMed: 876356]
5. Chen Q, Fischer A, Reagan JD, Yan LJ, Ames BN. Oxidative DNA damage and senescence of human diploid fibroblast cells. *Proc Natl Acad Sci U S A*. 1995; 92:4337–4341. [PubMed: 7753808]
6. Lee AC, Fenster BE, Ito H, Takeda K, Bae NS, Hirai T, et al. Ras proteins induce senescence by altering the intracellular levels of reactive oxygen species. *J Biol Chem*. 1999; 274:7936–7940. [PubMed: 10075689]
7. Parrinello S, Samper E, Krtolica A, Goldstein J, Melov S, Campisi J. Oxygen sensitivity severely limits the replicative lifespan of murine fibroblasts. *Nat Cell Biol*. 2003; 5:741–747. [PubMed: 12855956]
8. Di Micco R, Cicalese A, Fumagalli M, Dobreva M, Verrecchia A, Pelicci PG, et al. DNA damage response activation in mouse embryonic fibroblasts undergoing replicative senescence and following spontaneous immortalization. *Cell Cycle*. 2008; 7:3601–3606. [PubMed: 19001874]
9. Mallette FA, Gaumont-Leclerc MF, Ferbeyre G. The DNA damage signaling pathway is a critical mediator of oncogene-induced senescence. *Genes Dev*. 2007; 21:43–48. [PubMed: 17210786]
10. Di Micco R, Fumagalli M, Cicalese A, Piccinin S, Gasparini P, Luise C, et al. Oncogene-induced senescence is a DNA damage response triggered by DNA hyper-replication. *Nature*. 2006; 444:638–642. [PubMed: 17136094]
11. Bartkova J, Rezaei N, Liontos M, Karakaidos P, Kletsas D, Issaeva N, et al. Oncogene-induced senescence is part of the tumorigenesis barrier imposed by DNA damage checkpoints. *Nature*. 2006; 444:633–637. [PubMed: 17136093]
12. Efeyan A, Garcia-Cao I, Herranz D, Velasco-Miguel S, Serrano M. Tumour biology: Policing of oncogene activity by p53. *Nature*. 2006; 443:159. [PubMed: 16971940]
13. Christophorou MA, Ringshausen I, Finch AJ, Swigart LB, Evan GI. The pathological response to DNA damage does not contribute to p53-mediated tumour suppression. *Nature*. 2006; 443:214–217. [PubMed: 16957739]
14. Kamijo T, van de Kamp E, Chong MJ, Zindy F, Diehl JA, Sherr CJ, et al. Loss of the ARF tumor suppressor reverses premature replicative arrest but not radiation hypersensitivity arising from disabled atm function. *Cancer Res*. 1999; 59:2464–2469. [PubMed: 10344759]
15. Stott FJ, Bates S, James MC, McConnell BB, Starborg M, Brookes S, et al. The alternative product from the human CDKN2A locus, p14(ARF), participates in a regulatory feedback loop with p53 and MDM2. *EMBO J*. 1998; 17:5001–5014. [PubMed: 9724636]
16. Lowe SW, Ruley HE, Jacks T, Housman DE. p53-dependent apoptosis modulates the cytotoxicity of anticancer agents. *Cell*. 1993; 74:957–967. [PubMed: 8402885]
17. Kastan MB, Zhan Q, el-Deiry WS, Carrier F, Jacks T, Walsh WV, et al. A mammalian cell cycle checkpoint pathway utilizing p53 and GADD45 is defective in ataxia-telangiectasia. *Cell*. 1992; 71:587–597. [PubMed: 1423616]
18. Khan SH, Moritsugu J, Wahl GM. Differential requirement for p19ARF in the p53-dependent arrest induced by DNA damage, microtubule disruption, and ribonucleotide depletion. *Proc Natl Acad Sci U S A*. 2000; 97:3266–3271. [PubMed: 10716710]
19. Tanaka S, Diffley JF. Deregulated G1-cyclin expression induces genomic instability by preventing efficient pre-RC formation. *Genes Dev*. 2002; 16:2639–2649. [PubMed: 12381663]
20. Gorgoulis VG, Vassiliou LV, Karakaidos P, Zacharatos P, Kotsinas A, Liloglou T, et al. Activation of the DNA damage checkpoint and genomic instability in human precancerous lesions. *Nature*. 2005; 434:907–913. [PubMed: 15829965]
21. Bartkova J, Horejsi Z, Koed K, Kramer A, Tort F, Zieger K, et al. DNA damage response as a candidate anti-cancer barrier in early human tumorigenesis. *Nature*. 2005; 434:864–870. [PubMed: 15829956]
22. Blasco MA, Lee HW, Hande MP, Samper E, Lansdorp PM, DePinho RA, et al. Telomere shortening and tumor formation by mouse cells lacking telomerase RNA. *Cell*. 1997; 91:25–34. [PubMed: 9335332]

23. Vafa O, Wade M, Kern S, Beeche M, Pandita TK, Hampton GM, et al. c-Myc can induce DNA damage, increase reactive oxygen species, and mitigate p53 function: a mechanism for oncogene-induced genetic instability. *Mol Cell*. 2002; 9:1031–1044. [PubMed: 12049739]
24. Chin L, Artandi SE, Shen Q, Tam A, Lee SL, Gottlieb GJ, et al. p53 deficiency rescues the adverse effects of telomere loss and cooperates with telomere dysfunction to accelerate carcinogenesis. *Cell*. 1999; 97:527–538. [PubMed: 10338216]
25. Halazonetis TD, Gorgoulis VG, Bartek J. An oncogene-induced DNA damage model for cancer development. *Science*. 2008; 319:1352–1355. [PubMed: 18323444]
26. Evangelou K, Bartkova J, Kotsinas A, Pateras IS, Lontos M, Velimezi G, et al. The DNA damage checkpoint precedes activation of ARF in response to escalating oncogenic stress during tumorigenesis. *Cell Death Differ*. 2013; 20:1485–1497. [PubMed: 23852374]
27. Bester AC, Roniger M, Oren YS, Im MM, Sarni D, Chaoat M, et al. Nucleotide deficiency promotes genomic instability in early stages of cancer development. *Cell*. 2011; 145:435–446. [PubMed: 21529715]
28. Celeste A, Petersen S, Romanienko PJ, Fernandez-Capetillo O, Chen HT, Sedelnikova OA, et al. Genomic instability in mice lacking histone H2AX. *Science*. 2002; 296:922–927. [PubMed: 11934988]
29. d'Adda di Fagagna F. Living on a break: cellular senescence as a DNA-damage response. *Nat Rev Cancer*. 2008; 8:512–522. [PubMed: 18574463]
30. Borel F, Lacroix FB, Margolis RL. Prolonged arrest of mammalian cells at the G1/S boundary results in permanent S phase stasis. *J Cell Sci*. 2002; 115:2829–2838. [PubMed: 12082144]
31. Vassilev LT, Vu BT, Graves B, Carvajal D, Podlaski F, Filipovic Z, et al. In vivo activation of the p53 pathway by small-molecule antagonists of MDM2. *Science*. 2004; 303:844–848. [PubMed: 14704432]
32. Weber JD, Taylor LJ, Roussel MF, Sherr CJ, Bar-Sagi D. Nucleolar Arf sequesters Mdm2 and activates p53. *Nat Cell Biol*. 1999; 1:20–26. [PubMed: 10559859]
33. Carlos AR, Escandell JM, Kotsantis P, Suwaki N, Bouwman P, Badie S, et al. ARF triggers senescence in Brca2-deficient cells by altering the spectrum of p53 transcriptional targets. *Nat Commun*. 2013; 4:2697. [PubMed: 24162189]
34. Monasor A, Murga M, Lopez-Contreras AJ, Navas C, Gomez G, Pisano DG, et al. INK4a/ARF limits the expansion of cells suffering from replication stress. *Cell Cycle*. 2013; 12:1948–1954. [PubMed: 23676215]
35. Christensen C, Bartkova J, Mistrik M, Hall A, Lange MK, Ralfkiaer U, et al. A short acidic motif in ARF guards against mitochondrial dysfunction and melanoma susceptibility. *Nat Commun*. 2014; 5:5348. [PubMed: 25370744]
36. Lessard F, Morin F, Ivanchuk S, Langlois F, Stefanovsky V, Rutka J, et al. The ARF tumor suppressor controls ribosome biogenesis by regulating the RNA polymerase I transcription factor TTF-I. *Mol Cell*. 2010; 38:539–550. [PubMed: 20513429]
37. Kuo ML, den Besten W, Thomas MC, Sherr CJ. Arf-induced turnover of the nucleolar nucleophosmin-associated SUMO-2/3 protease Senp3. *Cell Cycle*. 2008; 7:3378–3387. [PubMed: 18948745]
38. Hinkal G, Parikh N, Donehower LA. Timed somatic deletion of p53 in mice reveals age-associated differences in tumor progression. *PLoS One*. 2009; 4:e6654. [PubMed: 19680549]
39. Brady CA, Jiang D, Mello SS, Johnson TM, Jarvis LA, Kozak MM, et al. Distinct p53 Transcriptional Programs Dictate Acute DNA-Damage Responses and Tumor Suppression. *Cell*. 2011; 145:571–583. [PubMed: 21565614]
40. Valente LJ, Gray DH, Michalak EM, Pinon-Hofbauer J, Egle A, Scott CL, et al. p53 Efficiently Suppresses Tumor Development in the Complete Absence of Its Cell-Cycle Inhibitory and Proapoptotic Effectors p21, Puma, and Noxa. *Cell Rep*. 2013; 3:1339–1345. [PubMed: 23665218]
41. Li T, Kon N, Jiang L, Tan M, Ludwig T, Zhao Y, et al. Tumor suppression in the absence of p53-mediated cell-cycle arrest, apoptosis, and senescence. *Cell*. 2012; 149:1269–1283. [PubMed: 22682249]

42. Kotsinas A, Papanagnou P, Galanos P, Schramek D, Townsend P, Penninger JM, et al. MKK7 and ARF: new players in the DNA damage response scenery. *Cell Cycle*. 2014; 13:1227–1236. [PubMed: 24675893]
43. Velimezi G, Lontos M, Vougas K, Roumeliotis T, Bartkova J, Sideridou M, et al. Functional interplay between the DNA-damage-response kinase ATM and ARF tumour suppressor protein in human cancer. *Nat Cell Biol*. 2013; 15:967–977. [PubMed: 23851489]
44. Dimri GP, Lee X, Basile G, Acosta M, Scott G, Roskelley C, et al. A biomarker that identifies senescent human cells in culture and in aging skin in vivo. *Proc Natl Acad Sci U S A*. 1995; 92:9363–9367. [PubMed: 7568133]

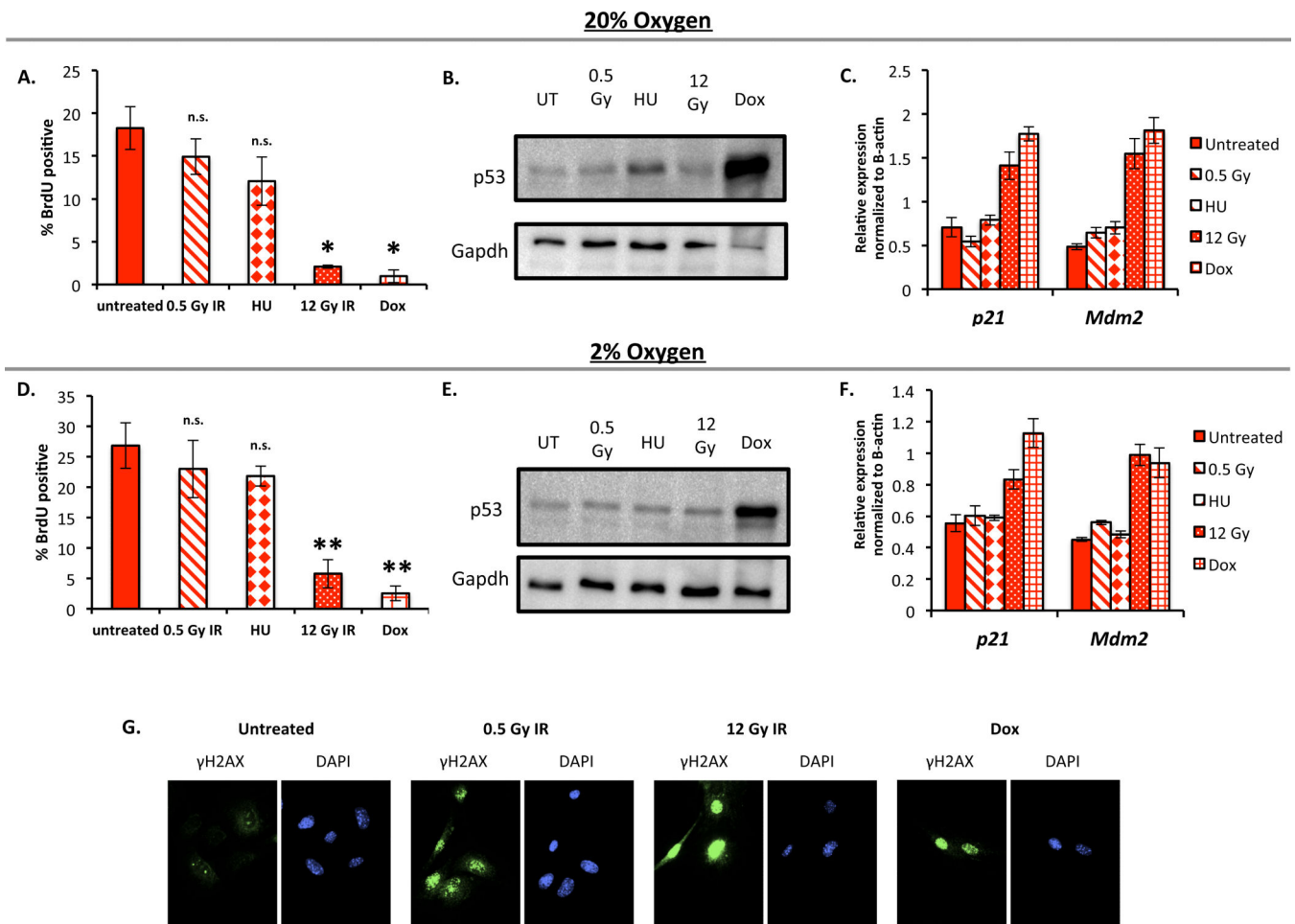


Figure 1. Establishing assays for acute and chronic DNA damage responses

(A) Effects of DNA damaging agent treatment on cell-cycle progression assessed by BrdU incorporation. Wild-type MEFs maintained in 20% (atmospheric) oxygen were treated with 0.2 μg/ml doxorubicin, 12 Gy or 0.5 Gy of γ-irradiation (using a ¹³⁷Cs source), 150 μM hydroxyurea, or left untreated. 24 hours later, cells were pulsed with 3 μg/ml BrdU for 4 hours, fixed in 4% paraformaldehyde and assessed for BrdU incorporation by immunofluorescence using an α-BrdU antibody (1:50, BD biosciences). Differences in BrdU incorporation between treated and untreated cells were analyzed by 2-tailed t-test assuming unequal variance: “n.s.” = not significant (p>0.05), “*” indicates p = 0.05, “**” indicates p = 0.01. (B) Effects of DNA damaging agent treatment on p53 protein levels. Western blotting for p53 (CM5 1:500, Vector Laboratories) was performed on wild-type MEFs maintained in 20% oxygen and treated with 12 Gy or 0.5 Gy of γ-irradiation, 150 μM hydroxyurea or 0.2 μg/ml doxorubicin. Cells were harvested 8 hours after treatment. Gapdh serves as a loading control (1:15,000, Fitzgerald). (C) Effects of DNA damaging agent treatment on p53 target gene expression. RNA was harvested from wild-type MEFs maintained in 20% oxygen 2 hours after treatment with 12 Gy or 0.5 Gy of γ-irradiation, 150 μM hydroxyurea or 0.2 μg/ml doxorubicin. Quantitative RT-PCR was used to analyze expression of *p21*, and *Mdm2*. Expression levels are normalized to *β-actin*. The averages ± SEM from 3 independent biologic experiments are shown. (D) Effects of DNA damaging

agent treatment on cell cycle progression, as assessed by BrdU incorporation, in 2% oxygen. Wild-type MEFs maintained at 2% oxygen were treated with 0.2 µg/ml doxorubicin, 12 Gy or 0.5 Gy of γ -irradiation (using a ^{137}Cs source), 150 µM hydroxyurea, or left untreated. 24 hours later, cells were pulsed with BrdU for four hours, and assessed for BrdU incorporation by immunofluorescence as in (A). Differences in BrdU incorporation between treated and untreated cells were analyzed by 2-tailed t-test as in (A). (E) Effects of DNA damaging agent treatment on p53 protein levels in 2% oxygen. Western blotting for p53 was performed on wild-type MEFs maintained in 2% oxygen as in (B). (F) Effects of DNA damaging agent treatment on p53 target gene expression. RNA was harvested from wild-type MEFs maintained in 2% oxygen and analyzed as in (C). (G) Measuring DNA damage in 2% oxygen. γH2AX immunostaining (Millipore, 1:1000) on wild-type MEFs maintained at 2% oxygen and treated with 0.2 µg/ml doxorubicin, 12 Gy γ -irradiation, 0.5 Gy γ -irradiation, or left untreated and then fixed in paraformaldehyde 30 minutes after treatment.

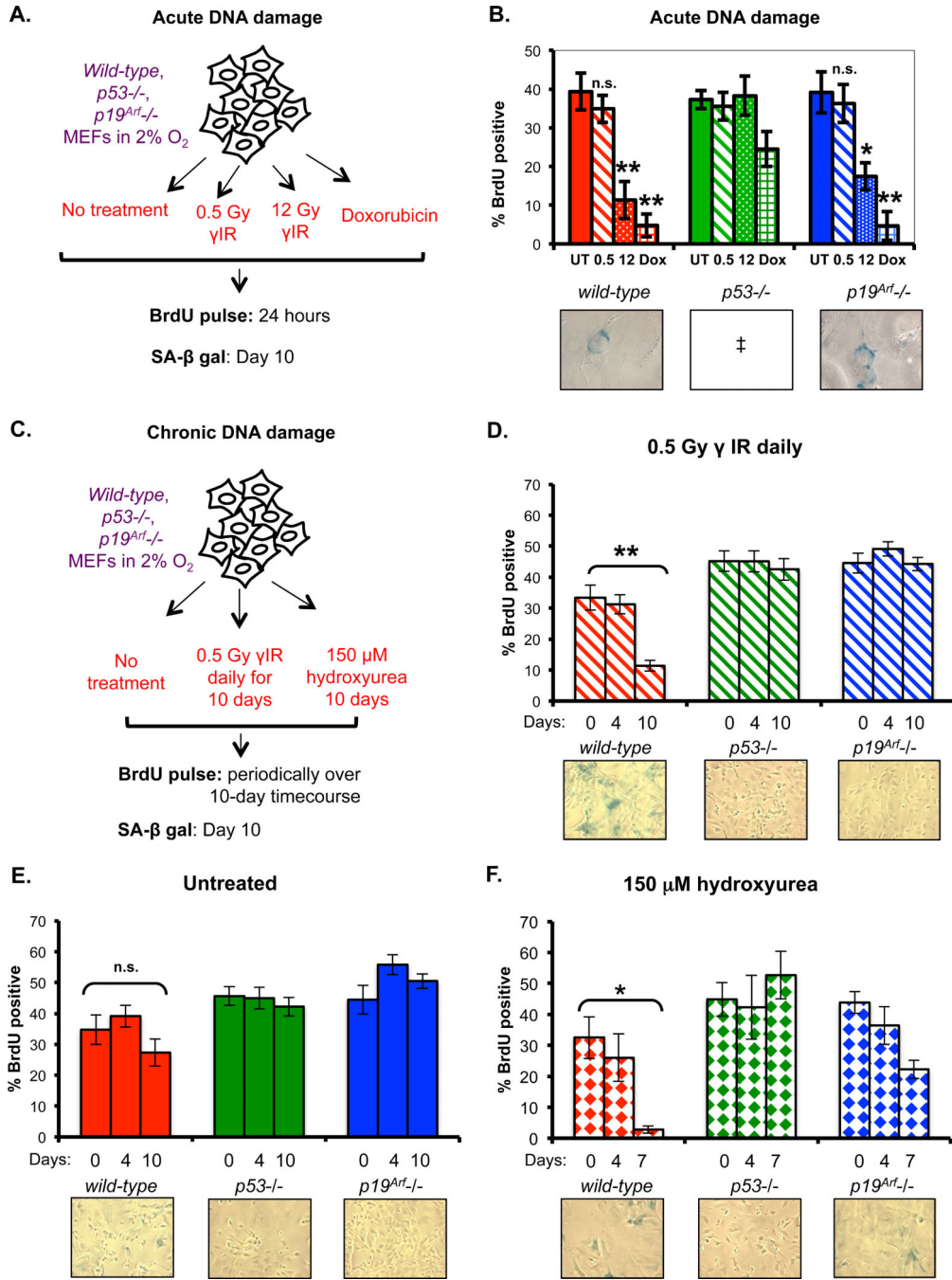


Figure 2. *p19*^{Arf} is dispensable for the response to acute DNA damage but is required for the response to chronic DNA damage
 (A-B) Assessing acute DNA damage responses. Wild-type, *p53*-null, and *p19*^{Arf}-null MEFs maintained in 2% O₂ were treated with 0.2 μ g/ml doxorubicin, 12 or 0.5 Gy of γ -irradiation, or left untreated. 24 hours after treatment, cells were pulsed with BrdU and assessed for BrdU incorporation by immunofluorescence as in (1A). Ten days after treatment, cells were fixed in 2% formaldehyde/0.2% glutaraldehyde and incubated with X-gal at pH 6.0 for 48 hr as described⁴⁴. Shown are representative photomicrographs of SA- β gal stained wild-type and *p19*^{Arf}-null MEFs treated with doxorubicin. “‡” Indicates that photomicrographs of *p53*-

null MEFs treated with doxorubicin could not be obtained at this time point because the cells had died due to lack of cell-cycle arrest. Differences in BrdU incorporation between treated and untreated cells of different genotypes were analyzed by 2-tailed t-test as in (1A). Comparisons between genotypes were based on the ratio of treated to untreated cells as follows: *wild-type* (0.5Gy/UT) vs. *p19^{Arf}* (0.5Gy/UT), $p=0.97$; *wild-type* (12Gy/UT) vs. *p19^{Arf}* (12Gy/UT), $p=0.24$; *wild-type* (Dox/UT) vs. *p19^{Arf}* (Dox/UT) $p=0.56$. (C-F) Assessing chronic DNA damage responses. Upper panels: Wild-type, *p53*-null, and *p19^{Arf}*-null MEFs maintained at 2% O₂ were treated with 0.5 Gy of γ -irradiation daily (D), were left untreated (E), or were treated with 150 μ M hydroxyurea (F). Cells were pulsed with BrdU at the indicated time points and assessed for BrdU incorporation by immunofluorescence as in (1A). The graphs represent the mean of 3-6 independent experiments and the error bars represent the standard error of the mean. Differences in BrdU incorporation between day zero and day ten cells of different genotypes were analyzed by 2-tailed t-test as in (2B). Comparisons between genotypes were based on the ratio of day ten (or day seven for hydroxyurea) to day zero cells as follows: *wild-type* UT (day10/day0) vs. *p19^{Arf}* UT (day10/day0), $p=0.13$; *wild-type* 0.5Gy (day10/day0) vs. *p19^{Arf}* 0.5Gy (day10/day0), $p=0.0045$; *wild-type* HU (day7/day0) vs. *p19^{Arf}* HU (day7/day0), $p=0.028$. Lower panels: representative images of MEFs of each genotype stained for SA- β gal positivity as in (2B) on day ten.

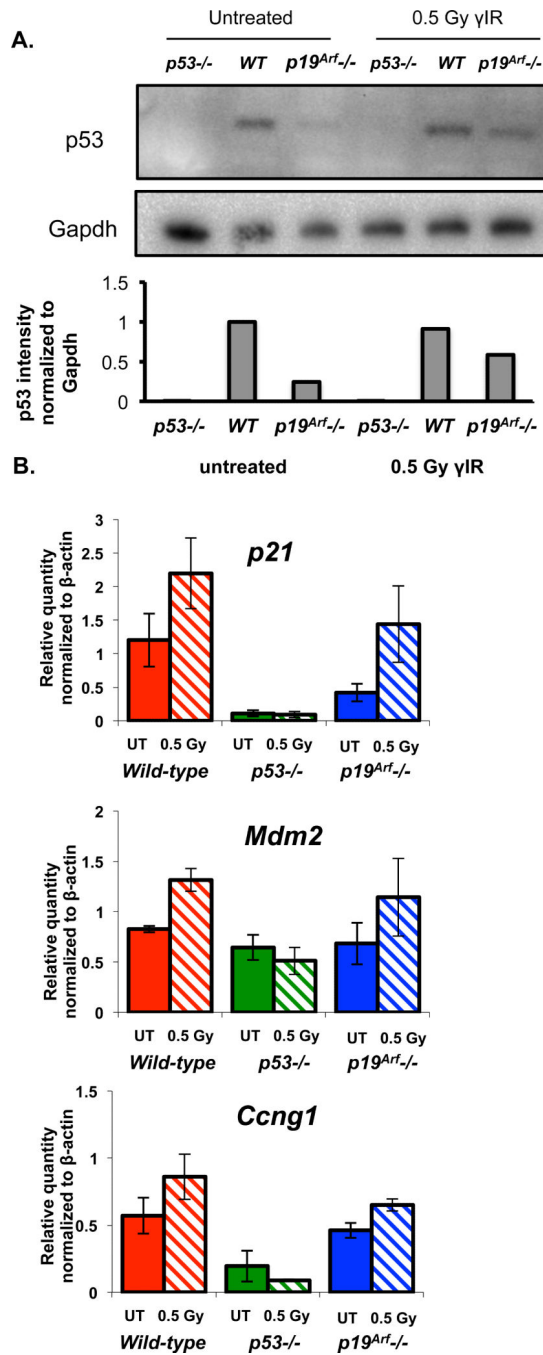


Figure 3. p53 protein stabilization and target gene induction in the chronic DNA damage response

(A) p53 levels upon chronic DNA damage. Wild-type, *p53*-null, and *p19*^{Arf}-null MEFs maintained at 2% O₂ were treated with 0.5 Gy of γ -irradiation daily or left untreated. (Top) Protein extracts were prepared after 4 days of treatment and analyzed by immunoblot for p53 (CM5, 1:500, Vector Laboratories). Gapdh (1:15,000, Fitzgerald) serves as the loading control. (Bottom) The chemiluminescent blots were imaged using the ChemiDoc XRS+ (Bio-Rad) system with ImageLab software (Bio-Rad) to select the appropriate exposure for quantitation. Image J software was used to quantify band intensities, and relative intensities

were determined by normalization of p53 to Gapdh. A representative experiment from 3 independent trials is shown. **(B)** p53 target gene expression upon chronic DNA damage. Wild-type, *p53*-null, and *p19^{Arf}*-null MEFs maintained at 2% O₂ were treated with 0.5 Gy of γ -irradiation daily or left untreated. RNA was prepared after 4 days of treatment and analyzed for *p21*, *Mdm2*, or *Ccng1* expression by qRT-PCR. Expression levels are normalized to *β -actin*. The averages \pm SEM from 3 independent biologic experiments are shown.

Author Manuscript

Author Manuscript

Author Manuscript

Author Manuscript

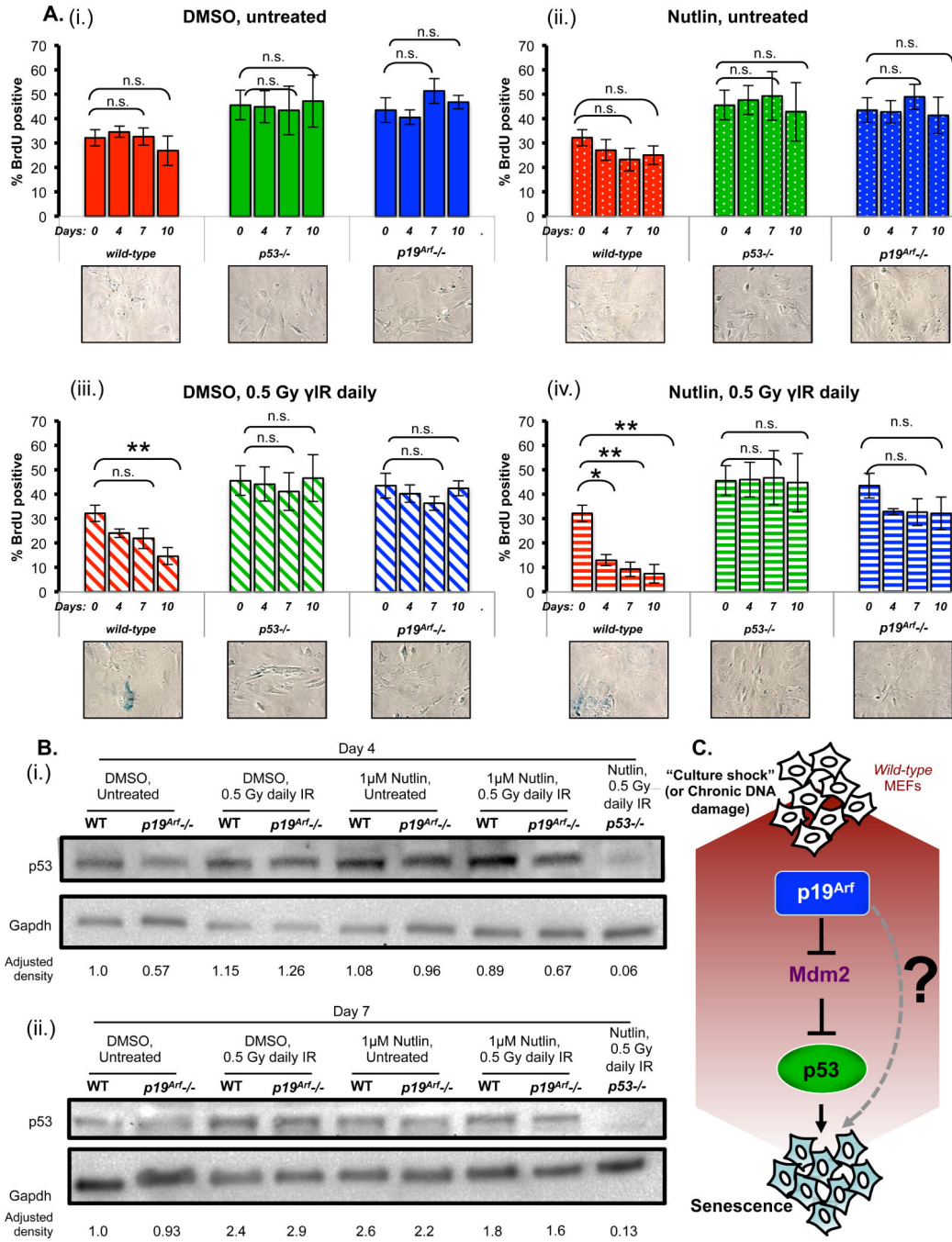


Figure 4. Activation of p53 with Nutlin3a fails to restore cell-cycle arrest and senescence in p19^{Arf}-null MEFs

(A) Effects of chronic DNA damage and Nutlin3a on cell cycle progression. Upper panels: Cells were maintained in 2% oxygen and treated with 1 μM Nutlin3a or DMSO (vehicle) and exposed to 0.5 Gy of γ-irradiation daily or left untreated. BrdU incorporation was assessed on days zero, four, seven and ten as described in (1A). The graphs show the averages ± SEM of three time courses, and p-values were calculated with a 2-tailed t-test assuming unequal variance. Lower panels: Representative images of MEFs from each genotype stained for SA-β gal positivity as in (2B) on day ten. Higher magnification images

of additional fields of SA- β gal-stained cells are shown in Supp. Fig 1. **(B)** Effects of chronic DNA damage and Nutlin3a on p53 protein levels. Cells were treated as above, and protein extracts were prepared after four days (i) or seven days (ii) of treatment and analyzed by immunoblot for p53 as in (3A). Gapdh serves as the loading control. A representative experiment from 3 independent trials is shown. **(C)** Our findings suggest an underlying basis for senescence of mouse fibroblasts in culture. In response to chronic, low-dose DNA damage, as occurs during passage in culture, p19^{Arf} acts both through activation of p53 and potentially through a p53-independent pathway, that remains to be elucidated (indicated by “?”).

Author Manuscript

Author Manuscript

Author Manuscript

Author Manuscript