

SPECT/CT imaging in bone scintigraphy of a case of clavicular osteoma

Yuka Yamamoto^{1*}, Yoshihiro Nishiyama¹

¹ Department of Radiology, Faculty of Medicine, Kagawa University, Kagawa, Japan

ARTICLE INFO

Article type:
Case Report

Article history:
Received: 3 Jan 2014
Revised: 14 Jan 2014
Accepted: 24 Jan 2014

Keywords:
Bone scintigraphy
Osteoma
SPECT/CT
Tc-99m HMDP

ABSTRACT

Osteoma is a benign bone-forming tumor that usually arises in the craniofacial bones and rarely in the long bones. Clavicular involvement is extremely rare. We report a 51-year-old woman with osteoma of the left clavicle. Radiograph of the left shoulder showed a well-defined lobulated blastic mass in the proximal and mid-portion of the left clavicle. Bone scintigraphy was performed 4 hours after an intravenous injection of Tc-99m hydroxymethylene diphosphonate (HMDP). Whole-body image showed a focus of intensely increased uptake in the clavicle. Single photon emission computed tomography / computed tomography (SPECT/CT) images were also acquired and clearly showed intense uptake at the tumor site. Integrated SPECT/CT imaging supplies both functional and anatomic information about bone: the SPECT imaging improves sensitivity compared with planar imaging, the CT imaging provides precise localization of the abnormal uptake, and information on the shape and structure of the abnormalities improves the specificity of the diagnosis.

► Please cite this paper as:

Yamamoto Y, Nishiyama Y. SPECT/CT imaging in bone scintigraphy of a case of clavicular osteoma. *Asia Oceania J Nucl Med Biol.* 2014; 2(1): 73-74.

Introduction

Osteoma is a benign bone-forming tumor and clavicular involvement is extremely rare. We report a case of clavicular osteoma undergoing bone scintigraphy who demonstrated intense uptake in the clavicle, for which further single photon emission computed tomography / computed tomography (SPECT/CT) imaging was performed to characterize and localize the lesion.

Case Report

The present case was a 51-year-old woman who presented with a left clavicular mass. The tumor had grown very slowly since the age of 21 years when the lesion was detected incidentally on plain chest X-ray. Radiograph of the left shoulder showed a 70×35 mm, well-defined lobulated blastic mass in the proximal and mid-portion of the left clavicle. Bone scintigraphy

was performed 4 hours after an intravenous injection of Tc-99m hydroxymethylene diphosphonate (HMDP). Whole-body image showed a focus of intensely increased uptake in the clavicle (Figure 1). SPECT/CT images were also acquired and provided precise localization of the abnormal uptake (Figure 2). Histological findings were consistent with an osteoma.

Discussion

Osteoma is a benign osteogenic tumor that usually arises in the craniofacial bones and rarely in the long bones (1, 2). Clavicular involvement is extremely unusual (3, 4). The radiological appearance of osteoma is usually that of a round or ovoid, sharply marginated blastic mass with no associated soft tissue mass (5). On bone scintigraphy, a significant focal increased uptake is noted, corresponding to the

* Corresponding author: Yuka Yamamoto, MD, Department of Radiology, Faculty of Medicine, Kagawa University, 1750-1 Ikenobe, Miki-cho, Kita-gun, Kagawa 761-0793, Japan. Tel: +81-87-891-2219; Fax: +81-87-891-2220; E-mail: yuka@kms.ac.jp

© 2014 *mums.ac.ir* All rights reserved.

This is an Open Access article distributed under the terms of the Creative Commons Attribution License (<http://creativecommons.org/licenses/by/3.0>), which permits unrestricted use, distribution, and reproduction in any medium, provided the original work is properly cited.



Figure 1. Whole-body anterior image shows a focus of intensely increased uptake in the proximal and mid-portion of the left clavicle

area of the blastic mass (6). The most important differential diagnosis is parosteal osteosarcoma. In comparison with parosteal osteosarcoma, osteoma usually presents as a homogeneous and dense lesion without an accompanying soft-tissue mass, cortical destruction, or intramedullary invasion (1). This is perhaps best appreciated on CT scans (1). Integrated SPECT/CT imaging supplies both functional and anatomic information about bone: the SPECT imaging improves sensitivity compared with planar imaging, the CT imaging provides precise localization of the abnormal uptake, and information on the shape and structure of the abnormalities improves the specificity of the diagnosis (7).

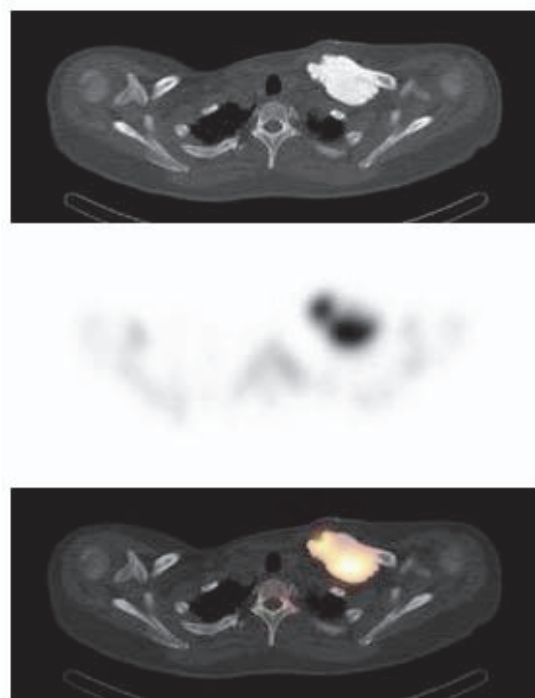


Figure 2. The transaxial CT image (upper section) identifies a dense lesion with well-defined contours in the left clavicle. There is intensely increased uptake on the corresponding SPECT image (middle section) and SPECT/CT fusion image (lower section)

References

1. Sundaram M, Falbo S, McDonald D, Janney C. Surface osteomas of the appendicular skeleton. *AJR Am J Roentgenol.* 1996; 167:1529-33.
2. Lambiase RE, Levine SM, Terek RM, Wyman JJ. Long bone osteomas: imaging features that may help avoid unnecessary biopsies. *AJR Am J Roentgenol.* 1998; 171:775-8.
3. Meltzer CC, Scott WW, McCarthy EF. Case report 698: Osteoma of the clavicle. *Skeletal Radiol.* 1991; 20:555-7.
4. Saglik Y, Kendi TK, Yildiz HY, Erakar A, Güngör A, Ereku S. Clavicular osteoma associated with bronchial osteomas. *Skeletal Radiol.* 2004; 33: 234-6.
5. Woertler K. Benign bone tumors and tumor-like lesions: value of cross-sectional imaging. *Eur Radiol.* 2003; 13:1820-35.
6. Enomoto K, Nishimura H, Hamada K, Doi K, Kubo T, Hatazawa J. Nuclear imaging of osteoma. *Clin Nucl Med.* 2008; 33:135-6.
7. Xing Y, Zhao J, Wang T. A case of paranasal sinuses osteoma detected on bone SPECT/CT. *Clin Nucl Med.* 2011; 36:224-6.