

CORRECTION

# Correction: Simultaneous Induction of Non-Canonical Autophagy and Apoptosis in Cancer Cells by ROS-Dependent ERK and JNK Activation

**Chew Hooi Wong, Kartini Bte Iskandar, Sanjiv Kumar Yadav, Jayshree L. Hirpara, Thomas Loh, Shazib Pervaiz**

The authors would like to correct Fig 5, as errors were introduced in the preparation of this figure for publication. In the middle panel of Fig 5C, the loading control blot was mistakenly duplicated as well as mislabeled  $\beta$ -actin instead of GAPDH. The authors have provided a corrected version of [Fig 5](#) here that includes both a corrected blot and a corrected label. The authors confirm that these changes do not alter their findings. The authors have provided the underlying images as Supporting Information.

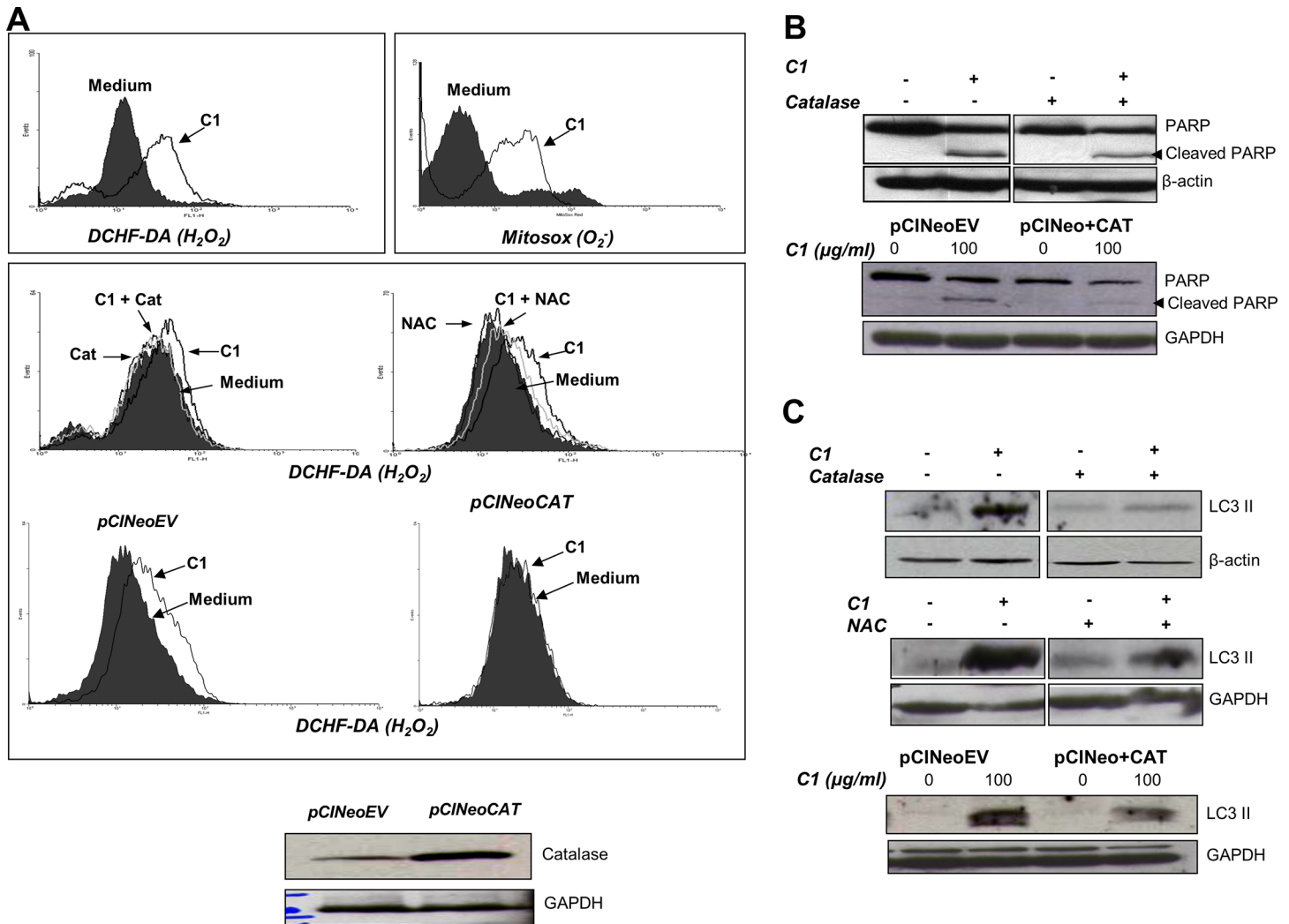


 OPEN ACCESS

**Citation:** Wong CH, Iskandar KB, Yadav SK, Hirpara JL, Loh T, Pervaiz S (2016) Correction: Simultaneous Induction of Non-Canonical Autophagy and Apoptosis in Cancer Cells by ROS-Dependent ERK and JNK Activation. PLoS ONE 11(7): e0159352. doi:10.1371/journal.pone.0159352

**Published:** July 8, 2016

**Copyright:** © 2016 Wong et al. This is an open access article distributed under the terms of the [Creative Commons Attribution License](#), which permits unrestricted use, distribution, and reproduction in any medium, provided the original author and source are credited.



**Fig 5. C1 induces early mitochondrial ROS production.** In all,  $1 \times 10^6$  cells were incubated with 100  $\mu\text{g/ml}$  of C1 for 3 hours and (Ai) intra-mitochondrial  $O_2^-$  was determined using the fluorescent dye MitoSox™ RED Mitochondrial  $O_2^-$  Indicator and intracellular  $H_2O_2$  was detected by DCHF-DA loading and analyzed by flow cytometry. (Aii) Cells were pre-incubated with catalase (7000 units/ml) or NAC (200  $\mu\text{M}$ ) for 1 hour before treatment with C1 (100  $\mu\text{g/ml}$  for 3 hours) and intracellular  $H_2O_2$  was determined. (Aiii) Cells were transiently transfected with 8  $\mu\text{g}$  of pCINeoEV or pCINeo+CAT for 48 hours (Aiii) and treated with C1 (100  $\mu\text{g/ml}$  for 3 hours) and intracellular  $H_2O_2$  was determined (Aiii). Cells were pre-incubated with catalase (7000 units/ml for 1 hour) or were transiently transfected with pCINeoEV or pCINeo+CAT before exposure to C1 (100  $\mu\text{g/ml}$  for 24 hours), and total cell lysates were immunoblotted for (B) PARP cleavage and (C) LC3II accumulation.

doi:10.1371/journal.pone.0159352.g001

## Supporting Information

S1 File. Raw blots used to create Fig 5. (PPTX)

## Reference

1. Wong CH, Iskandar KB, Yadav SK, Hirpara JL, Loh T, Pervaiz S (2010) Simultaneous Induction of Non-Canonical Autophagy and Apoptosis in Cancer Cells by ROS-Dependent ERK and JNK Activation. PLoS ONE 5(4): e9996. doi:10.1371/journal.pone.0009996 PMID: 20368806