

RESEARCH ARTICLE

# A Sequence of Flushing and Drying of Breeding Habitats of *Aedes aegypti* (L.) Prior to the Low Dengue Season in Singapore

Osama M. E. Seidahmed\*, Elfatih A. B. Eltahir

Ralph M Parsons Laboratory, Massachusetts Institute of Technology, Cambridge, Massachusetts, United States of America

\* [omekki@mit.edu](mailto:omekki@mit.edu)



**OPEN ACCESS**

**Citation:** Seidahmed OME, Eltahir EAB (2016) A Sequence of Flushing and Drying of Breeding Habitats of *Aedes aegypti* (L.) Prior to the Low Dengue Season in Singapore. PLoS Negl Trop Dis 10(7): e0004842. doi:10.1371/journal.pntd.0004842

**Editor:** Pattamaporn Kittayapong, Mahidol University, THAILAND

**Received:** January 9, 2016

**Accepted:** June 21, 2016

**Published:** July 26, 2016

**Copyright:** © 2016 Seidahmed, Eltahir. This is an open access article distributed under the terms of the [Creative Commons Attribution License](https://creativecommons.org/licenses/by/4.0/), which permits unrestricted use, distribution, and reproduction in any medium, provided the original author and source are credited.

**Data Availability Statement:** Relevant data are within the paper and its Supporting Information files. Dataset of dengue cases is available online from Ministry of Health ([https://www.moh.gov.sg/content/moh\\_web/home/statistics/infectiousDiseasesStatistics/weekly\\_infectiousdiseasesbulletin.html](https://www.moh.gov.sg/content/moh_web/home/statistics/infectiousDiseasesStatistics/weekly_infectiousdiseasesbulletin.html)). Hourly weather data can be obtained from National Environmental Agency (<http://www.nea.gov.sg/weather-climate/climate-information/singapore-s-climate-information-data>), for researchers who meet the criteria for access to data.

**Funding:** This research was supported by the National Research Foundation Singapore through the

## Abstract

In dengue-endemic areas, transmission shows both a seasonal and interannual variability. To investigate how rainfall impacts dengue seasonality in Singapore, we carried out a longitudinal survey in the Geylang neighborhood from August 2014 to August 2015. The survey comprised of twice-weekly random inspections to outdoor breeding habitats and continuous monitoring for positive ones. In addition, observations of rainstorms were collected. Out of 6824 inspected habitats, 67 contained *Aedes aegypti*, 11 contained *Aedes albopictus* and 24 contained *Culex spp.* The main outdoors habitat of *Aedes aegypti* was storm drains (54/67). We found that 80% of breeding sites in drains (43/54) were lost after intense rainstorms related to the wet phase of the Northeast monsoon (NE) between November 2014 and early January 2015. Subsequently, 95% (41/43) of these flushed drains had dried out during the dry phase of the NE in late January-February 2015. A return in the outdoor breeding of *Aedes aegypti* was observed after the onset of Southwest monsoon (SW) between May and August 2015. There was also a reduction in productivity of breeding habitats for larvae and pupae after the onset of the NE. In wet equatorial regions like Singapore, rainfall varies with the monsoons. A monsoon-driven sequence of flushing and drying shapes the outdoor seasonal abundance of *Aedes aegypti*. This finding can be used to optimize vector control strategies and better understand dengue in the context of climate change.

## Author Summary

Increasing concerns about the arboviral diseases transmitted by *Aedes aegypti* mosquito—which include dengue, Chikungunya, yellow fever and Zika virus—demand a better understanding for the breeding ecology of this mosquito. A common observation on mosquito-borne diseases in endemic countries is that they peak following the onset of the rainy season and increase in breeding habitats, while they trough in the dry season. On the contrary, in Singapore, which has no pronounced dry season, dengue cases decrease after a very wet monsoon. Here, we show that this monsoon is likely involved in a strong seasonal reduction of outdoor breeding of the dengue mosquito through a sequence of flushing and

Singapore-MIT Alliance for Research and Technology's Center for Environmental Sensing and Modeling interdisciplinary research program. The funders had no role in study design, data collection and analysis, decision to publish, or preparation of the manuscript.

**Competing Interests:** The authors have declared that no competing interests exist.

drying events. A flushing-drying mechanism may affect the seasonal abundance of the vector in similar eco-epidemiological settings.

## Introduction

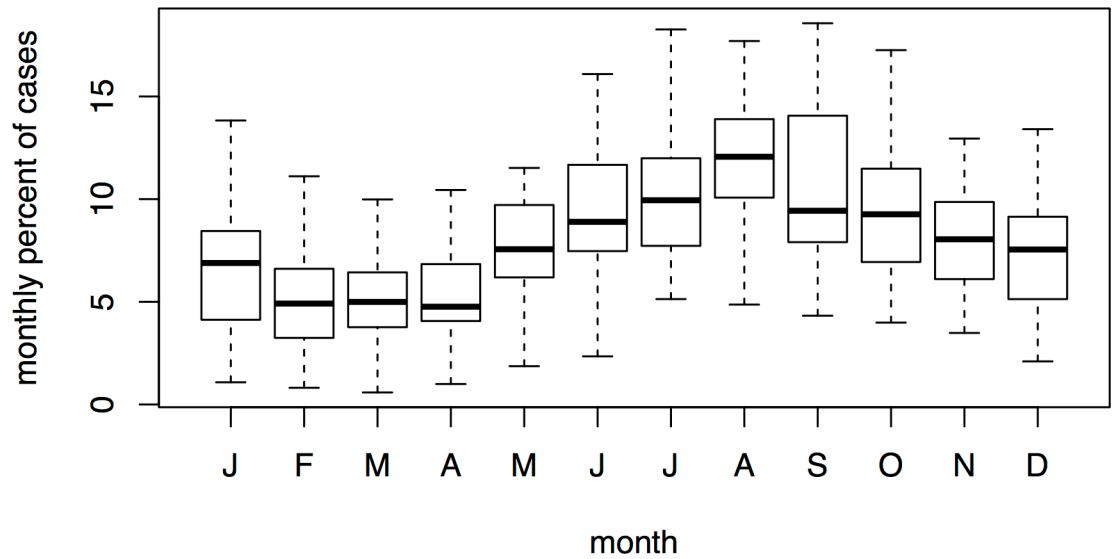
Dengue is an increasing public health problem in the world [1]. In endemic countries, dengue transmission shows both a seasonal and interannual variability [2,3]. Although there are various climatic and non-climatic factors that underlie temporal variability, seasonal patterns of dengue coincide with changes in monsoon systems in the tropics [4–6]. For example, in Mexico and Thailand, dengue incidence increases during their main rainy seasons between June and November [7,8]. Similarly, endemic countries in the southern hemisphere, like Brazil and Indonesia, witness dengue peaks in their rainy seasons between January and May [9,10]. Vector control is shown to be effective against dengue transmission when applied early in the season [3]. In addition, there is growing evidence for vector adaptation to outdoor breeding that can increase impact of the climate change on dengue [11,12]. Understanding the climatic drivers of seasonality can improve not only disease surveillance and control in endemic areas, but also global health efforts since tourists visit endemic countries on seasonal holidays [13].

Several studies on dengue and climate have revealed the pivotal role of temperature on both spread and seasonality of dengue [14–16]. Temperature affects larval behavior and development [17–19], survival and biting rate of the adult mosquito [19–21], and extrinsic incubation of the virus in the mosquito [22,23]. Moreover, daily temperature range (DTR) can influence infective probability of dengue virus (DENV) in *Aedes* females [24].

In wet tropical areas, there is little difference in temperature between the seasons, while rainfall occurs throughout the year and only differs in magnitude between the seasons. Rainfall mainly impacts dengue by generating physical conditions for the breeding of the vector. Rainwater can stagnate into a natural breeding habitat or feed an artificial one where mosquitoes can lay eggs [25,26]. On the other hand, rainfall intensity may have negative effects on larvae by pushing them down the water column or washing them out farther from the breeding site or shortening the survival of adults [27,28].

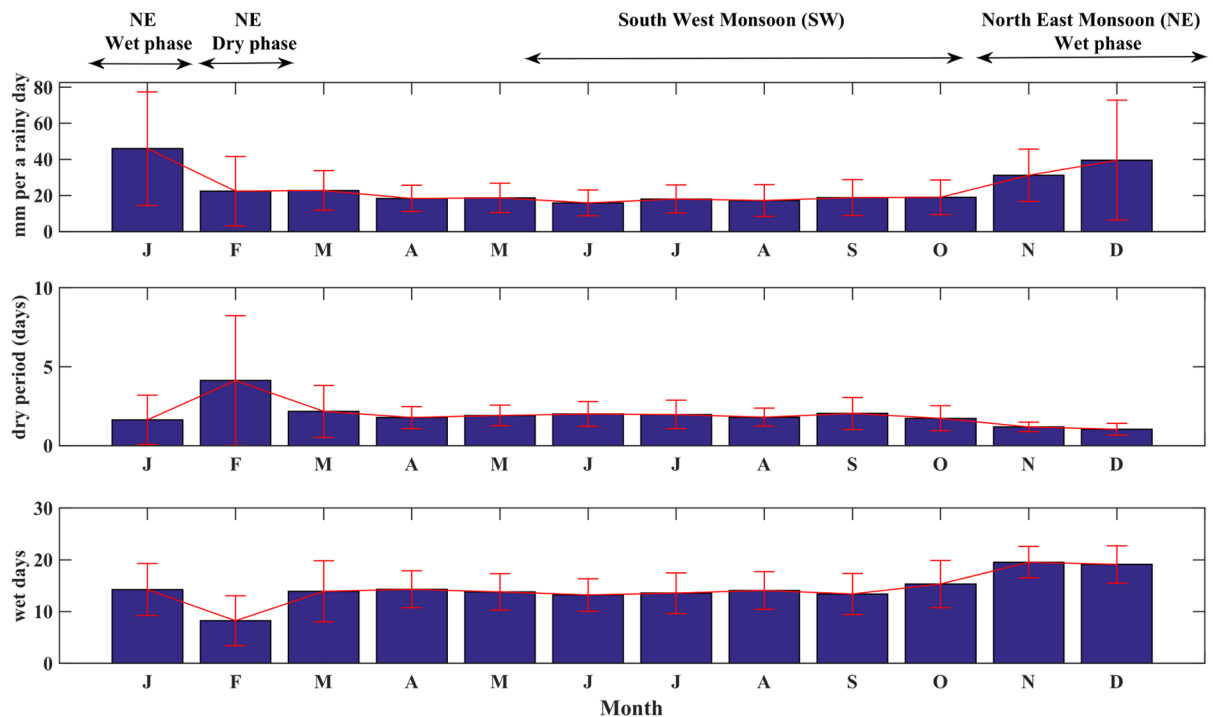
Singapore is a dengue-endemic country where the four serotypes of the virus simultaneously circulate in the city (DENV-1, -2, -3, and -4) [29–32]. While both *Aedes aegypti* and *Aedes albopictus* coexist in Singapore, the latter species is the main disease vector [33]. The city has been struck by repetitive outbreaks during the last two decades. This interannual variability of dengue is attributed to switches in dominant DENV strains and introductions of new virus genotypes [34]. In addition, the disease shows a seasonal peak around July–September and a relatively low incidence in February–April (see Fig 1).

Singapore is also subject to two monsoons: a Northeast monsoon (NE) that results in heavy rainfall between November and March and a relatively drier Southwest monsoon (SW) between June and October [35]. Interestingly, the seasonal trough of dengue cases follows the NE. Daily rainfall intensities are higher by a magnitude of 12–25 mm during the wet phase of the NE (i.e. November–January) compared to other months (see Fig 2A). In addition, the dry phase of the NE places February as the driest month, where dry periods extend to four days and a total of only eight rainy days (see Fig 2B and 2C, respectively). On the other hand, hourly temperature in Singapore does not exceed 2°C between the seasons in Singapore. The mean temperature of the hottest and coolest months, May and December, are 28.4°C and 26.5°C, respectively (see S1 Fig).



**Fig 1. Seasonality of dengue in Singapore: boxplot of monthly percent of cases (1983–2015).**

doi:10.1371/journal.pntd.0004842.g001



**Fig 2. A) Mean daily intensity of rainfall in Singapore per a rainy day (1983–2011). The intensity is calculated by dividing amount of rainstorms by rainy days of a month. B) Mean duration of a dry period (i.e. sum of hourly stretches without rainfall) without a rainstorm. C) Monthly average numbers of rainy days; notice February is the driest month with only eight rainy days. Arrows indicate the Northeast (i.e. the wet and dry phases, NE1 and NE2, respectively) and Southwest (SW) monsoons. Data source: Changi station—National Environmental Agency (NEA).**

doi:10.1371/journal.pntd.0004842.g002

Past studies have shown statistical relationships between dengue and climate in Singapore. Heng and others showed a rise in weekly temperature 8–20 weeks in advance preceded an increase in dengue incidence in Singapore. This lag time was found to be 18 weeks during the major outbreak of 2005 [33]. Researchers also used weekly mean temperature and cumulative rainfall to identify a 16-week period as the optimum to forecast dengue outbreaks in Singapore [5]. In a recent work, absolute humidity showed strong predictive value for dengue incidence [36].

Here, we provide a mechanistic basis to explain the connection between dengue and rainfall in Singapore. We show that the NE is likely involved in a strong seasonal reduction of outdoor breeding of the dengue mosquito through a sequence of flushing and drying events.

## Methods

### Biosafety and ethics statement

This study received a risk assessment approval from the Institutional Biosafety Committee (IBC) of Singapore-MIT Alliance of Research and Technology (SMART). The research was not conducted in any private residences and no human samples were collected.

### Hypothesis

A preliminary entomological survey was carried out in July 2013 in Singapore. Three neighborhoods were inspected for outdoor breeding of the dengue vector: Geylang (1.320° N, 103.891° E), Lorong Limau (1.323° N, 103.855° E) and Caldecott (1.337° N, 103.839° E). Accordingly, we found that roadside drains in back alleys are the main outdoor breeding habitats of *Ae. aegypti*. Breeding was also encountered in discarded receptacles indoors. While *Ae. albopictus* was identified in various outdoor discarded receptacles (but in association with the canopy), *Culex spp.* was mainly found in large drains on the main lanes and roads.

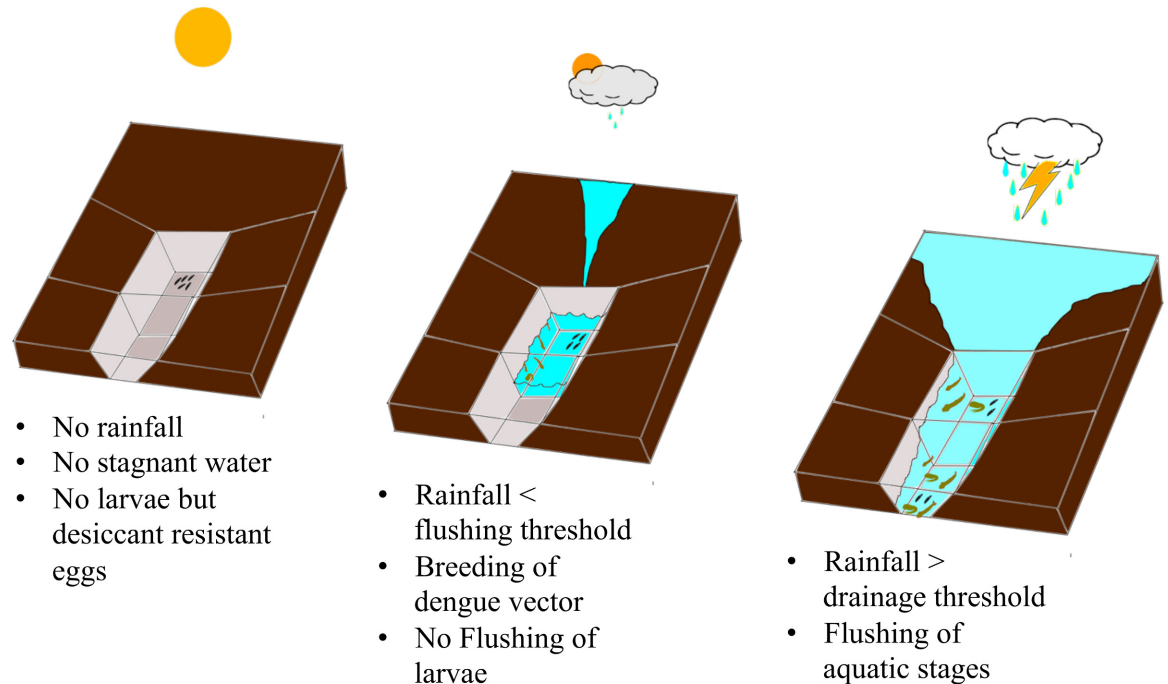
Based on the main observation of the preliminary survey (i.e., that dengue vector *Ae. aegypti* breeds in drains) combined with the above epidemiological and meteorological findings (see Figs 1 and 2), we developed a hypothesis to explain the connection between rainfall and outdoor breeding of the dengue vector in Singapore. During dry periods, only desiccation-resistant eggs can survive in drains and similar outdoor breeding habitats. We hypothesize that while a monsoon results in breeding of *Ae. aegypti* in drains, a monsoon with intense rainstorms can cause flushing of aquatic stages (see Fig 3). In order to test this hypothesis, we selected Geylang as study area.

**Study area.** Geylang neighborhood, east of the Singapore River, is a highly urbanized neighborhood that has an area of about 3 km<sup>2</sup>. Although Geylang has an estimate of 32,000 residents population, non-residents is believed to be larger because of the cheap housing that attracts foreign laborers. National Environmental Agency (NEA) recognizes Geylang as a hyperendemic area where a continuous reporting of dengue cases and disease transmission happens (see Fig 4).

### Entomological surveys

Entomological surveys were continuous between August 2014 and August 2015 except for two weeks between February 21st and March 10th. The surveys included two tasks of inspections:

**Semiweekly-random inspections.** We carried out a random aquatic survey twice a week. The inspector was equipped with torchlight, sieves, large-mouth pipettes, a white enamel pan and small shell vials. In each survey, the inspector examined all outdoor natural/artificial habitats in the selected blocks for aquatic stages. Samples of pupae and larvae were pipetted in



### Rainfall flushing of the dengue vector *Aedes aegypti*

**Fig 3. A descriptive sketch for the rainfall flushing mechanism shows how intense rainstorms during the monsoon results in washing breeding of dengue vector from stagnant drains.**

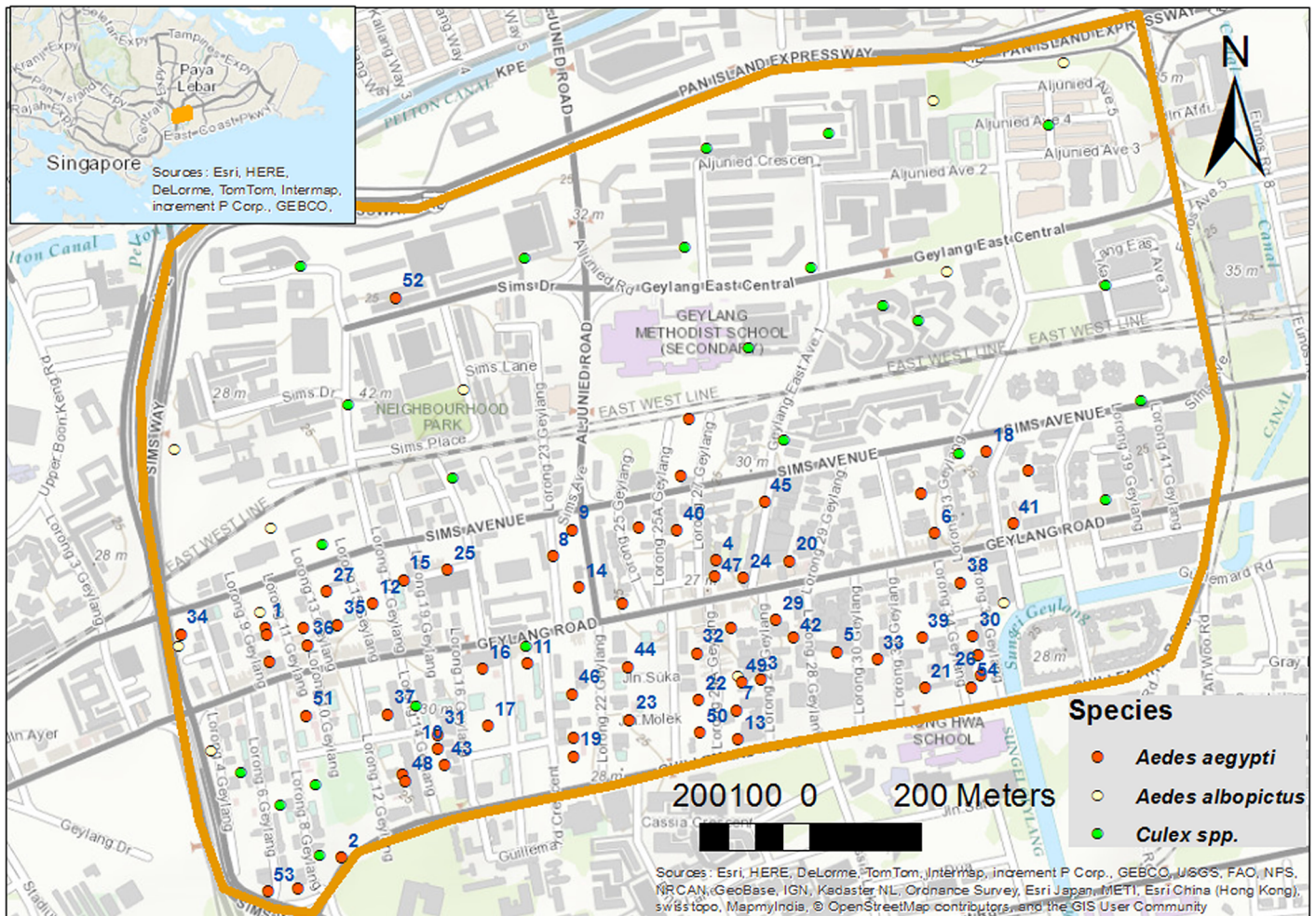
doi:10.1371/journal.pntd.0004842.g003

labeled vials with 70% ethanol, and transferred to the laboratory for taxonomy. In addition, a subsample of aquatic specimens was held alive in a netted cup until adult emergence to confirm identification. Taxonomic keys [37–39] were used to identify the preserved larvae and emerged adults. For a positive breeding habitat of mosquitoes, type of habitat and presence of other aquatic insects were recorded. Location of positive habitats was geo-referenced using GPS tools.

**Monitoring of positive habitats of *Aedes aegypti*.** We also carried out semiweekly monitoring of the positive breeding habitats. In particular, we focused here on breeding history of *Aedes aegypti* in the drains. In particular, the aim was to follow-up these positive drains since the starting date when a breeding of *Ae. aegypti* was found (in the regular random inspections) and continuously till the end of the survey in August 2015. Hence, we describe four situations in these monitored sites: 1) Stagnant and Positive (SP), 2) Stagnant and Negative (SN), 3) Flushed and Negative (FN), and 4) dry and negative (DN). In addition, in a case of SP, we estimated the number of larvae and pupae in the site using larval dippers. Larval density per breeding habitat was calculated as the total number of larvae of *Ae. aegypti* divided by the number of positive breeding sites in the semiweekly monitoring survey. We also determined pupal-productivity of the breeding habitats by summation of numbers of pupae collected from the positive drains and non-drains during the semiweekly survey.

#### Microclimatic data on rainfall and flushing

A set of weather HOBO loggers was placed in Geylang between August 2014 and August 2015 to record hourly microclimatic conditions. These included: a rain gauge to record amounts of



**Fig 4. The study area: Geylang neighborhood, Singapore.** The figure shows locations of positive breeding sites for *Aedes aegypti*, *Ae albopictus* and *Culex* spp. Breeding drains of *Ae. aegypti* are given serial numbers that also used in Fig 6.

doi:10.1371/journal.pntd.0004842.g004

rainstorms, and water level logger. The siphon rain gauge tipping bucket (TR-525S) was calibrated in the laboratory according to the manufacturer. Next, the rain gauge was placed on the roof of a 7-storey building to prevent obstruction.

To characterize flushing events, we placed HOBO U20L logger in a back alley drain in Geylang. The water level logger records water temperature and absolute pressure every 10 minutes. Software uses absolute pressure, reference water level and density to calculate the water level. The accuracy of the device is 0.1%. In addition, daily rainfall was obtained from the closest NEA weather station for the same period.

Logging of the rain gauge was intermittent because of periodic sensor errors. However, readings from nine months (between 9/15-9/25/2014, 12/07/2014-3/26/2015 and 5/28-8/26/2015) are retrieved. In order to overcome this discrepancy, we compensated missing data by their corresponding rainfall from the closest station Tanjong Katong. A regression analysis has showed that data of the weather station could strongly predict data of the rain gauge ( $R^2 = 0.94$ ).

## Results

### Entomological observations

**Main outdoors breeding habitats.** Out of 6824 inspected sites, 3624 (53%) were wet habitats. Most of outdoor breeding habitats were open and closed drains, 45% and 40%, respectively. The remained of inspections (15%) were non-drains including canvas sheets, pails, plastic bags, and flowerpots. Interestingly, positive habitats contained *Ae. aegypti* (n = 67), followed by *Culex spp.* (n = 24) and *Ae. albopictus* (n = 11)- [Table 1](#). Breeding of *Ae. aegypti* was mainly in storm drains (53/67). In addition, we found aquatic stages of non-mosquito species belonging to the families: *Chironomidae*, *Psychodidae* and *Viviparidae*. We also encountered rodents in the drains (Family: *Muridae*).

The monthly ratio of wet to dry habitats inspected in Geylang is shown in [Fig 5](#). Accordingly, the number of wet habitats found during the wet phase of the NE is more than twice of the dry ones. On the other hand, wet habitats during the dry phase of the NE are less than half of the dry ones.

**Flushing, drying and return of outdoor breeding.** [Fig 6](#) shows that breeding drains were mainly flushed in the wet phase of the NE. Moreover, the following dry phase of the NE had resulted in drying of 95.3% (41/43) of the flushed drains. Monitoring resumed in March showed that most of the previously positive drains were still dry 82.9% (34/41) while the wet ones (7/41) were negative. A return in outdoor breeding was shown after the onset of the SW. Hence, we found 11 positive drains for *Ae. aegypti* in June-August 2015. All these drains except one were within 200 meters from the previously positive ones prior to the NE period (see [Fig 1](#)).

Locations of the breeding drains are in [Fig 4](#). There is a clustering for breeding drains of *Ae. aegypti* in the southern part of Geylang.

**Effects on aquatic stages of *Ae. Aegypti*.** [Fig 7A](#) shows that 31.2% (19/61) of intense rainstorms (i.e. >10 mm) had occurred during the wet phase of the NE (i.e. November–December 2015). In addition, [Fig 7B](#) shows a similar pattern of increases in water level of the monitored drain.

The monsoonal pattern has also influenced larval density per breeding habitat as shown in [Fig 7C](#). These larval densities were higher during the SW periods (averages were 38.1 and 27.7 in 2014 and 2015, respectively) compared to the NE period (average = 16.7).

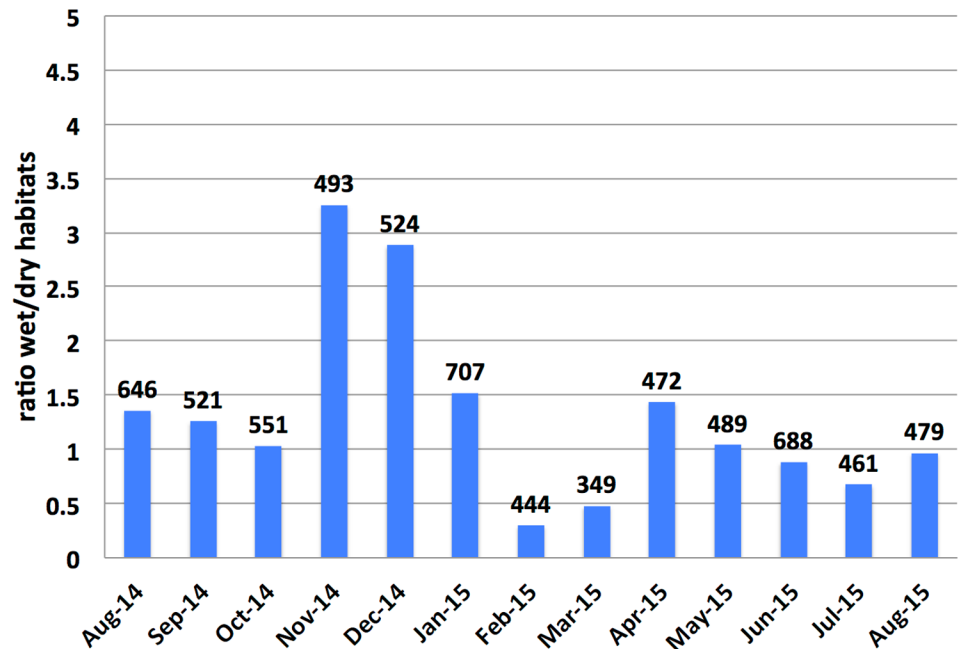
Similarly, the wetter monsoon had affected pupal-productivity of breeding drains for *Ae. aegypti* (see [Fig 7D](#)). Pupae had decreased after the onset of the NE from a total of 901 to 284 (i.e. 68.5% reduction). Although few breeding drains were encountered after the onset of the SW in 2015, the total of pupae was double that of the NE period (N = 505).

**Table 1. Total number of inspected and positive habitats in Geylang August 2014–August 2015.**

Type of habitat	Inspected habitats		Positive habitats		
	Dry	Wet	<i>Ae. aegypti</i>	<i>Ae. albopictus</i>	<i>Culex spp.</i>
<b>Open drains</b>	1267 (46.3%)	1470 (53.7%)	22 (1.4%)	2 (0.14%)	13 (0.88%)
<b>Closed drains</b>	1463 (47.5%)	1618 (52.5%)	31 (1.9%)	0	8 (0.49%)
<b>Non-drains</b>	470 (46.7%)	536 (53.3%)	14 (2.6%)	9 (1.68%)	3 (0.56%)
<b>Total</b>	3200 (46.9%)	3624 (53.1%)	67 (1.8%)	11 (0.3%)	24 (0.6%)

Note: A percentage in a breeding habitat is in reference to the corresponding number of wet habitats.

doi:10.1371/journal.pntd.0004842.t001

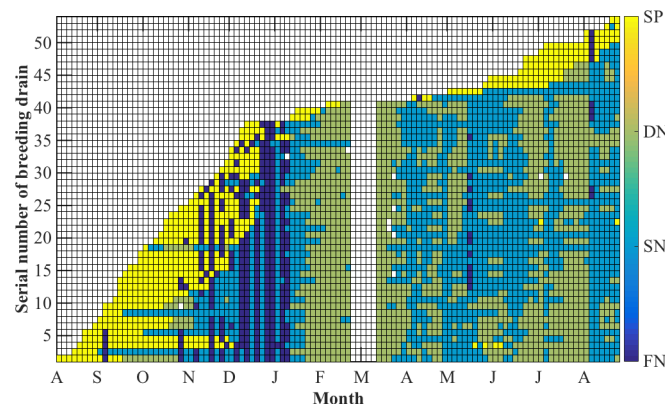


**Fig 5. Monthly ratio of wet/dry habitats in Geylang (August 2014–August 2015).** Total numbers of inspected habitats are shown above bars. Arrows indicate periods of the wet and dry phases of the Northeast monsoon (NE1 and NE2, respectively) and Southwest monsoon (SW). Note: no inspections were carried out between 2/21/15 and 3/10/15.

doi:10.1371/journal.pntd.0004842.g005

## Discussion

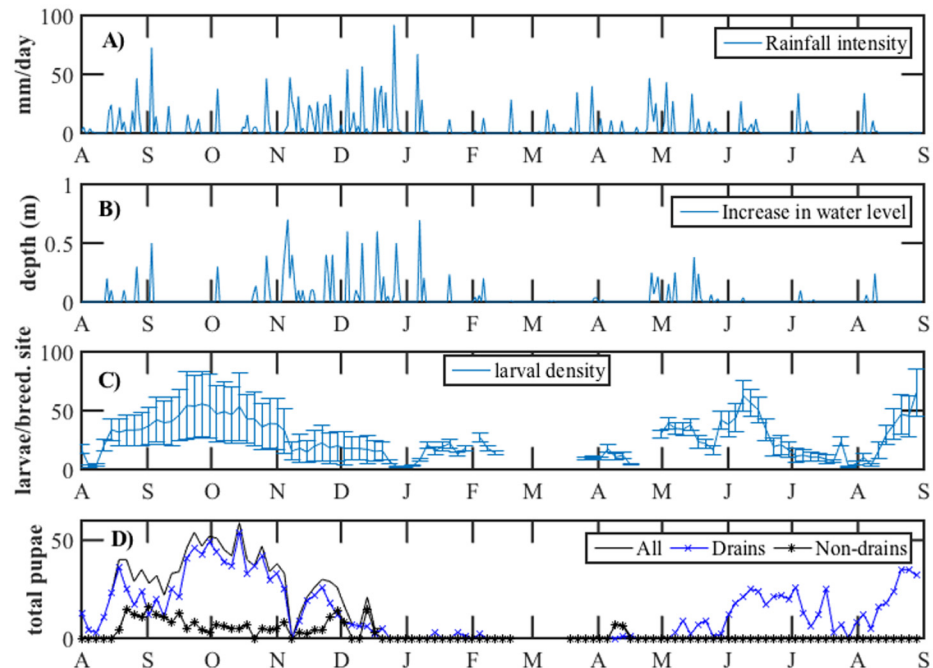
In Singapore, dengue cases peak during the third quarter of the year while they dip in the first one. For this study, we show rainfall may influence dengue via a sequence of two processes acting on the outdoor population of vector mosquito: 1) intense rainstorms that flush out breeding drains of the main vector, and 2) acute drying that follows and impedes returning of *Aedes*



**Fig 6. Timeline of the breeding drains of *Aedes aegypti* in Geylang, Singapore: August 2014- August 2015.** (SP: stagnant and positive, DN: Dry and Negative, SN: Stagnant and Negative, FN: Flushed and Negative). Grids along the x-axis represent the twice-weekly follow-ups. White grids indicate no inspections were carried out in these drains (two weeks between 2/21/2015 and 3/10/2015). Locations of the breeding drains are shown in Fig 4.

doi:10.1371/journal.pntd.0004842.g006





**Fig 7.** **A.** Intensity of daily rainstorms in Geylang (August 2014–August 2015). **B.** Increase of water level in a drain in Geylang (August 2014–August 2015). **C.** larval density of *Aedes aegypti* per an outdoor breeding habitat in Geylang per semiweekly survey. **D.** Pupal-productivity of drains and non-drains for *Ae. aegypti* per semiweekly survey. Note: no monitoring was carried out between 2/21/2015 and 3/10/2015.

doi:10.1371/journal.pntd.0004842.g007

*aegypti* breeding. While flushing happens when Singapore is under the wet phase of the NE, drying occurs when the monsoon which passes Singapore converges into Inter-tropical convergence zone (ITCZ) over Java [35].

Fluctuations of DTR around monthly mean temperatures 26.5–28.4°C are small in Singapore (i.e., < 1.1°C). Lambrechts and others suggested that small DTR around a mean temperature 26°C could induce the high season of DENV [24]. Hence, we argue that DTR effect on dengue seasonality in Singapore is modest.

We showed that the ratio of wet to dry habitats discovered during our random survey is larger in the wet phase of the NE than in the late dry one. However, wetness is not a sufficient condition for a mosquito to lay its eggs at a specific location. In fact, mosquitoes lay their eggs in specific breeding habitats that minimize mortality risk (e.g., predation or competition) and maximize nutritional benefits for their offspring [40]. One possible explanation for finding new breeding habitats during the wet phase of the NE is that they were flushed from indoor breeding sources. In addition, they can result from hatching of dormant eggs in the drains.

Likewise, we showed the effect of the NE on pupal-productivity and larvae of *Ae aegypti*. The rainfall and water level loggers verified these effects. However, the effect of intense rainstorms could be substantial on larval food; hence, on size of pupae and emerged adults. On the other hand, sampling of pupae from outdoor breeding habitat can be utilized in dengue surveillance in Singapore. Because sampling adults of *Ae. aegypti* is difficult, several studies have shown that pupal indices are useful in dengue surveillance [41–43].

A number of factors may explain why few breeding sites found between June and August 2015. First, an intensive larviciding program for the drains is recently introduced in Geylang (observed by the investigators). Second, there was unusual drying in the drains particularly in June–July 2015 that resulted from El Niño. Indeed, there is ongoing strong El Niño in

2015 [44]. The impact of El Niño episodes on dengue in Singapore was previously recorded in Singapore in May-2002-March 2003, June 2004- Feb2005 and Aug 2006-Jan 2007 by Hii and others [30].

We have no information whether breeding in drains had resulted from oviposition at these sites or flushing of indoor or upstream sites. In fact, there were no inspections for indoors habitats due to ethical and legal considerations. For example rain gutters, which are considered by National Environmental Agency of Singapore (NEA) as a key-breeding habitat for *Ae. aegypti*, could be the source that inoculated the breeding in drains. There is a need to assess the relative productivity of storm drains—in terms of *Ae. aegypti* pupae—to that of other indoor containers. A further work is also needed to determine a flushing threshold that could result in reduction of breeding in drains. This threshold could be an attribute to the drainage network in a neighborhood.

In order to optimize dengue vector control in Singapore and similar wet tropical areas, we suggest seasonal strategies—as in [S1 Table](#). Targets and measures of vector control should consider the difference in outdoor abundance of the vector between pre-seasonal and seasonal periods of the year. A pre-seasonal control strategy should focus on elimination of indoor breeding habitats particularly during the monsoonal dry period. We recommend treatment of breeding drains and roof gutters by long lasting persistence larvicide before the rain arrives and the mosquito flourishes in outdoor habitats. This pre-seasonal strategy can be effective to reduce the disease risk before onset of the high season. Removal of discarded receptacles should be continued around the year. We also propose a focal space spraying—using an adult insecticide—when an outdoor breeding habitat encountered to minimize the dispersal of emerged adults within the flight range of *Ae. aegypti*.

There is a growing interest in the health consequences of climate change. While projections of the climate change show an increasing trend in temperature under “the business-as-usual” scenario, the effects are less understood on rainfall distribution and patterns. In equatorial regions, a non-stationary increase in rainfall is expected to follow the seasonal displacement of ITCZ [45]. In general, if climate change enhances the wet conditions around December or enhance the dry conditions around February, then that may impact the seasonality of Dengue in this region. The flushing-drying mechanism may play a role in shaping the impact of climate change on dengue and other related arboviral diseases.

In conclusion, rainfall has a mechanistic role in shaping seasonal abundance of the dengue vector *Ae. aegypti* in Singapore. This effect happens through a monsoonal-driven sequence of flushing and drying in outdoor breeding habitats. In light of global urbanization, urban drainage systems are expanding in well-structured urban setting like Singapore. Hence, vector control interventions can be very effective before the dengue season in such eco-epidemiological settings.

## Supporting Information

**S1 Fig. Variation of the 3-hours average of temperature in Singapore (1983–2011).** Data source: Changi station– National Environment Agency of Singapore (NEA).

(TIF)

**S1 Table. Optimization of dengue vector control strategies according to the monsoon season.**

(DOCX)

**S1 Data. Supporting Excel file that contains other relevant data.**

(XLS)

## Acknowledgments

We thank Environmental Health Institute (EHI) and National Environment Agency (NEA) of Singapore for support on this project, and Ministry of Health- Singapore for dengue disease data. We are grateful to Maverick Asio and Idaly Ali for assistance on the field survey. Special thanks go to Noriko Endo, Alison Hoyt and anonymous reviewers for critical reading of the manuscript.

## Author Contributions

Conceived and designed the experiments: OMES EABE. Performed the experiments: OMES. Analyzed the data: OMES EABE. Contributed reagents/materials/analysis tools: EABE. Wrote the paper: OMES EABE.

## References

1. Bhatt S, Gething PW, Brady OJ, Messina JP, Farlow AW, Moyes CL, et al. The global distribution and burden of dengue. *Nature* [Internet]. Nature Publishing Group; 2013; 496(7446):504–7. Available from: <http://www.nature.com/doi/10.1038/nature12060>
2. Johansson MA, Cummings DAT, Glass GE. Multiyear Climate Variability and Dengue—El Niño Southern Oscillation, Weather, and Dengue Incidence in Puerto Rico, Mexico, and Thailand: A Longitudinal Data Analysis. *PLoS Med* [Internet]. 2009 Nov [cited 2012 Mar 12]; 6(11):e1000168. Available from: <http://dx.plos.org/10.1371/journal.pmed.1000168>
3. Stoddard ST, Wearing HJ, Reiner RC, Morrison AC, Astete H, Vilcarrromero S, et al. Long-Term and Seasonal Dynamics of Dengue in Iquitos, Peru. *PLoS Negl Trop Dis*. 2014; 8(7):19–21.
4. Wiwanitkit V. An observation on correlation between rainfall and the prevalence of clinical cases of dengue in Thailand. *J Vector Borne Dis* [Internet]. 2006 [cited 2015 Nov 12]; 43(2):73–6. Available from: <http://www.mrcindia.org/journal/issues/432073.PDF>
5. Hii YYL, Zhu H, Ng N, Ng LCL, Rocklöv J. Forecast of Dengue Incidence Using Temperature and Rainfall. *PLoS Negl Trop Dis* [Internet]. 2012 [cited 2015 Nov 12]; 6(11):e1908. Available from: <http://dx.doi.org/10.1371/journal.pntd.0001908><http://www.plosntds.org/article/fetchObjectAttachment.action?uri=info:doi/10.1371/journal.pntd.0001908&representation=PDF>
6. Wai KT, Arunachalam N, Tana S, Espino F, Kittayapong P, Abeyewickreme W, et al. Estimating dengue vector abundance in the wet and dry season: implications for targeted vector control in urban and peri-urban Asia. *Pathog Glob Health* [Internet]. 2012; 106(8):436–45. Available from: <http://www.scopus.com/inward/record.url?eid=2-s2.0-84871949303&partnerID=tZOTx3y1>
7. Wichmann O, Yoon I-K, Vong S, Limkittikul K, Gibbons R V., Mammen MP, et al. Dengue in Thailand and Cambodia: An Assessment of the Degree of Underrecognized Disease Burden Based on Reported Cases. *PLoS Negl Trop Dis* [Internet]. 2011; 5(3):e996. Available from: <http://dx.plos.org/10.1371/journal.pntd.0000996>
8. Colón-González FJ, Lake IR, Bentham G. Climate variability and dengue fever in warm and humid Mexico. *Am J Trop Med Hyg* [Internet]. 2011 May 5 [cited 2016 Jan 19]; 84(5):757–63. Available from: <http://www.ajtmh.org/cgi/content/long/84/5/757>
9. Siqueira JB, Martelli CMT, Coelho GE, Simplicio ACDR, Hatch DL. Dengue and dengue hemorrhagic fever, Brazil, 1981–2002. *Emerg Infect Dis* [Internet]. 2005 [cited 2015 Nov 4]; 11(1):48–53. Available from: <http://www.ncbi.nlm.nih.gov/pmc/articles/PMC3294356/>
10. Arcari P, Tapper N, Pfueller S. Regional variability in relationships between climate and dengue/DHF in Indonesia. *Singap J Trop Geogr*. 2007; 28(3):251–72.
11. Chadee DD, Martinez R. *Aedes aegypti* (L.) in Latin American and Caribbean region: With growing evidence for vector adaptation to climate change? *Acta Trop* [Internet]. Elsevier B.V.; 2016; 156:137–43. Available from: <http://linkinghub.elsevier.com/retrieve/pii/S0001706X1530200X>
12. Manrique-Saide P, Uc V, Prado C, Carmona C, Vadillo J, Chan R, et al. Storm Sewers as Larval Habitats for *Aedes aegypti* and *Culex* Spp. in a Neighborhood of Merida, Mexico. *J Am Mosq Control Assoc*. 2012; 28(3):255–7. PMID: [23833907](https://pubmed.ncbi.nlm.nih.gov/23833907/)
13. Wilder-Smith A. Dengue infections in travellers. *Paediatr Int Child Health* [Internet]. 2012 May; 32 Suppl 1:28–32. Available from: <http://www.pubmedcentral.nih.gov/articlerender.fcgi?artid=3381444&tool=pmcentrez&rendertype=abstract>
14. Morin CW, Comrie AC, Ernst K. Climate and dengue transmission: Evidence and implications. *Environ Health Perspect*. 2013; 121(11–12):1264–72. doi: [10.1289/ehp.1306556](https://doi.org/10.1289/ehp.1306556) PMID: [24058050](https://pubmed.ncbi.nlm.nih.gov/24058050/)

15. Hopp MJ, Foley JA. Global-scale relationships between climate and the dengue fever vector, Aedes Aegypti. *Clim Change*. 2001; 48(2–3):441–63.
16. Eisen L, Monaghan AJ, Lozano-Fuentes S, Steinhoff DF, Hayden MH, Bieringer PE. The impact of temperature on the bionomics of *Aedes (Stegomyia) aegypti*, with special reference to the cool geographic range margins. *J Med Entomol* [Internet]. 2014; 51(3):496–516. Available from: <http://www.ncbi.nlm.nih.gov/pubmed/24897844>
17. Focks DA, Haile DG, Daniels E, Mount GA. Dynamic life table model for *Aedes aegypti* (Diptera: Culicidae): analysis of the literature and model development. *J Med Entomol* [Internet]. 1993 Nov; 30(6):1003–17. Available from: [http://www.ncbi.nlm.nih.gov/entrez/query.fcgi?db=pubmed&cmd=Retrieve&dopt=AbstractPlus&list\\_uids=8271243](http://www.ncbi.nlm.nih.gov/entrez/query.fcgi?db=pubmed&cmd=Retrieve&dopt=AbstractPlus&list_uids=8271243)  
[http://www.ncbi.nlm.nih.gov/entrez/query.fcgi?db=pubmed&cmd=Retrieve&dopt=AbstractPlus&list\\_uids=8271242](http://www.ncbi.nlm.nih.gov/entrez/query.fcgi?db=pubmed&cmd=Retrieve&dopt=AbstractPlus&list_uids=8271242)
18. Reiskind MH, Janairo MS. Late-instar Behavior of *Aedes aegypti* (Diptera: Culicidae) Larvae in Different Thermal and Nutritive Environments. *J Med Entomol* [Internet]. 2015 Sep; 52(5):789–96. Available from: <http://jme.oxfordjournals.org/lookup/doi/10.1093/jme/tjv088>
19. Delatte H, Gimonneau G, Triboire a, Fontenille D. Influence of temperature on immature development, survival, longevity, fecundity, and gonotrophic cycles of *Aedes albopictus*, vector of chikungunya and dengue in the Indian Ocean. *J Med Entomol*. 2009 Jan; 46(1):33–41. PMID: [19198515](https://pubmed.ncbi.nlm.nih.gov/19198515/)
20. Carrington LB, Armijos MV, Lambrechts L, Barker CM, Scott TW. Effects of Fluctuating Daily Temperatures at Critical Thermal Extremes on *Aedes aegypti* Life-History Traits. *PLoS One* [Internet]. 2013; 8(3):e58824. Available from: <http://dx.plos.org/10.1371/journal.pone.0058824>
21. Halstead SB. Dengue Virus–Mosquito Interactions. *Annu Rev Entomol* [Internet]. 2008; 53(1):273–91. Available from: <http://www.annualreviews.org/doi/abs/10.1146/annurev.ento.53.103106.093326>
22. Focks D a., Brenner RJ, Hayes J, Daniels E. Transmission thresholds for dengue in terms of *Aedes aegypti* pupae per person with discussion of their utility in source reduction efforts. *Am J Trop Med Hyg* [Internet]. 2000 Jan; 62(1):11–8. Available from: <http://www.ncbi.nlm.nih.gov/pubmed/10761719>
23. YANG HM, MACORIS MLG, GALVANI KC, ANDRIGHETTI MTM, WANDERLEY DM V. Assessing the effects of temperature on the population of *Aedes aegypti*, the vector of dengue. *Epidemiol Infect* [Internet]. 2009 Aug [cited 2012 Jul 24]; 137(08):1188. Available from: [http://www.journals.cambridge.org/abstract\\_S0950268809002040](http://www.journals.cambridge.org/abstract_S0950268809002040)
24. Lambrechts L, Paaijmans KP, Fansiri T, Carrington LB, Kramer LD, Thomas MB, et al. Impact of daily temperature fluctuations on dengue virus transmission by *Aedes aegypti*. *Proc Natl Acad Sci U S A* [Internet]. 2011 [cited 2012 Jul 5]; 108(18):1–6. Available from: <http://www.pubmedcentral.nih.gov/articlerender.fcgi?artid=3088608&tool=pmcentrez&rendertype=abstract>
25. Morrison AC, Gray K, Getis A, Astete H, Sihuincha M, Focks D, et al. Temporal and geographic patterns of *Aedes aegypti* (Diptera: Culicidae) production in Iquitos, Peru. *J Med Entomol*. 2004; 41(6):1123–42. PMID: [15605653](https://pubmed.ncbi.nlm.nih.gov/15605653/)
26. Hammond SN, Gordon AL, Lugo EDC, Moreno G, Kuan GM, Lopez MM, et al. Characterization of *Aedes aegypti* (Diptera: Culicidae) production sites in urban Nicaragua. *J Med Entomol* [Internet]. 2007; 44:851–60. Available from: <Go to ISI>://WOS:000249179000019
27. Koenraad CJM, Harrington LC. Flushing effect of rain on container-inhabiting mosquitoes *Aedes aegypti* and *Culex pipiens* (Diptera: Culicidae). *J Med Entomol*. 2008 Jan; 45(1):28–35. PMID: [18283939](https://pubmed.ncbi.nlm.nih.gov/18283939/)
28. Jones CE, Lounibos LP, Marra PP, Kilpatrick a. M. Rainfall Influences Survival of *Culex pipiens* (Diptera: Culicidae) in a Residential Neighborhood in the Mid-Atlantic United States. *J Med Entomol*. 2012; 49(3):467–73. PMID: [22679852](https://pubmed.ncbi.nlm.nih.gov/22679852/)
29. Koh BKW, Lee CN, Kita Y, Choon ST, Li WA, Kit YW, et al. The 2005 dengue epidemic in Singapore: Epidemiology, prevention and control. *Ann Acad Med Singapore* [Internet]. 2008 Jul; 37(7):538–45. Available from: <http://www.ncbi.nlm.nih.gov/pubmed/18695764>
30. Hii YL, Rocklöv J, Ng N, Tang CS, Pang FY, Sauerborn R. Climate variability and increase in intensity and magnitude of dengue incidence in Singapore. *Glob Health Action* [Internet]. Co-Action Publishing; 2009 Jan [cited 2012 Mar 23]; 2:1–9. Available from: <http://www.pubmedcentral.nih.gov/articlerender.fcgi?artid=2799326&tool=pmcentrez&rendertype=abstract>
31. Ng L-C, Chem Y-k., Koo C, Mudin RNB, Amin FM, Lee K-S, et al. 2013 Dengue Outbreaks in Singapore and Malaysia Caused by Different Viral Strains. *Am J Trop Med Hyg* [Internet]. *ASTMH*; 2015 [cited 2015 Nov 4]; 92(6):1150–5. Available from: <http://www.ajtmh.org/cgi/doi/10.4269/ajtmh.14-0588>
32. Reiter P. Dengue Control in Singapore. In: *Dengue in Singapore* [Internet]. 1998. p. 213–42. Available from: <http://www.cabdirect.org/abstracts/19990502507.html>
33. Heng B, Goh K, Neo K. Environmental temperature, *Aedes aegypti* house index and rainfall as predictors of annual epidemics of dengue fever and dengue haemorrhagic fever in Singapore. *Singapore*

- Minist Environ [Internet]. 1998 [cited 2015 Nov 5];138–49. Available from: <http://www.cabdirect.org/abstracts/19990502502.html>
34. Lee KS, Lo S, Tan SSY, Chua R, Tan LK, Xu H, et al. Dengue virus surveillance in Singapore reveals high viral diversity through multiple introductions and in situ evolution. *Infect Genet Evol* [Internet]. Elsevier B.V.; 2012; 12(1):77–85. Available from: <http://dx.doi.org/10.1016/j.meegid.2011.10.012>
  35. Loo YY, Billa L, Singh A. Effect of climate change on seasonal monsoon in Asia and its impact on the variability of monsoon rainfall in Southeast Asia. *Geosci Front* [Internet]. 2014 [cited 2015 Nov 4];1–7. Available from: <http://dx.doi.org/10.1016/j.gsf.2014.02.009>
  36. Xu H-Y, Fu X, Lee LKH, Ma S, Goh KT, Wong J, et al. Statistical modeling reveals the effect of absolute humidity on dengue in Singapore. *PLoS Negl Trop Dis* [Internet]. 2014; 8(5):e2805. Available from: <http://www.pubmedcentral.nih.gov/articlerender.fcgi?artid=4006725&tool=pmcentrez&rendertype=abstract>
  37. Mattingly P. Contributions to the mosquito fauna of Southeast Asia. XII. Illustrated keys to the genera of mosquitoes (Diptera, Culicidae). 1971 [cited 2015 Nov 4]; Available from: <http://oai.dtic.mil/oai/oai?verb=getRecord&metadataPrefix=html&identifier=AD0729109>
  38. Huang Y-M. A Pictorial Key to the Mosquito Genera of the World: Including Subgenera of *Aedes* and *Ochlerotatus* (Diptera: Culicidae). Center for Insect Systematics, Kangwon National University; 2002.
  39. Rueda LM. Pictorial keys for the identification of mosquitoes (Diptera: Culicidae) associated with dengue virus transmission. *Zootaxa*. 2004. 1–60 p.
  40. Murrell EG, Damal K, Lounibos LP, Juliano SA. Distributions of competing container mosquitoes depend on detritus types, nutrient ratios, and food availability. *Ann Entomol Soc Am*. 2011; 104(4):688–98. PMID: [22707761](https://pubmed.ncbi.nlm.nih.gov/22707761/)
  41. Focks D a, Alexander N. Multicountry study of *Aedes aegypti* pupal productivity survey methodology. *Trop Med* [Internet]. 2007; 31:56. Available from: [http://www.searo.who.int/LinkFiles/Dengue\\_Bulletins\\_cbr4\\_vol31.pdf](http://www.searo.who.int/LinkFiles/Dengue_Bulletins_cbr4_vol31.pdf)
  42. Focks DA, Bangs MJ, Church C, Juffrie MNS. Transmission thresholds and pupal / demographic surveys in Yogyakarta, Indonesia for developing a dengue control strategy based on targeting epidemiologically significant types of water-holding containers. *Dengue Bull*. 2007; 31:83–102.
  43. Barrera R. Simplified pupal surveys of *Aedes aegypti* (L.) for entomologic surveillance and dengue control. *Am J Trop Med Hyg*. 2009; 81(1):100–7. PMID: [19556574](https://pubmed.ncbi.nlm.nih.gov/19556574/)
  44. Dobbs R, Stockton G. Playing hide and seek with El Nino. *Nat Publ Gr* [Internet]. 2015 [cited 2015 Nov 4]; 5(9):791–5. Available from: <http://dx.doi.org/10.1038/nclimate2775>
  45. IPCC. Climate Change 2014 Synthesis Report. Contrib Work Groups I, II III to Fifth Assess Rep Intergov Panel Clim Chang. 2014;1–151.