



Published in final edited form as:

Bio Protoc. 2013 February 5; 3(3): .

***In vitro* Tumorsphere Formation Assays**

Sara Johnson, Hexin Chen^{*}, and Pang-Kuo Lo

Biological Sciences Department, University of South Carolina, Columbia, USA

Abstract

A tumorsphere is a solid, spherical formation developed from the proliferation of one cancer stem/progenitor cell. These tumorspheres (Figure 1a) are easily distinguishable from single or aggregated cells (Figure 1b) as the cells appear to become fused together and individual cells cannot be identified. Cells are grown in serum-free, non-adherent conditions in order to enrich the cancer stem/progenitor cell population as only cancer stem/progenitor cells can survive and proliferate in this environment. This assay can be used to estimate the percentage of cancer stem/progenitor cells present in a population of tumor cells. The size, which can vary from less than 50 micrometers to 250 micrometers, and number of tumorspheres formed can be used to characterize the cancer stem/progenitor cell population within a population of *in vitro* cultured cancer cells and within *in vivo* tumors (Lo *et al.*, 2012; Liu *et al.*, 2009). While several cell lines can be used for tumorsphere formation assay (*e.g.* primary mammary tumor cells from *Her2/neu*-transgenic mice, MCF7, BT474 and HCC1954), some cell lines may not form typical tumorsphere structures and may be difficult to count or classify definitively as tumorspheres.

Note: The tumorspheres should be solid, round structures, but the size varies greatly from less than 50 μm to around 250 μm . With aggregated cells, you can still see individual cells attached to one another. With tumorspheres, the cells appear fused together and it is difficult to distinguish them as individual cells.

Materials and Reagents

1. 50x B27 Supplement (Life Technologies, InvitrogenTM, catalog number: 17504-044)
2. Basic Fibroblast Growth Factor (Sigma-Aldrich, catalog number: F0291)
3. Epidermal Growth Factor (Sigma-Aldrich, catalog number: E5036)
4. Insulin (Life Technologies, InvitrogenTM, catalog number: A11429IJ)
5. Bovine Serum Albumin (Sigma-Aldrich, catalog number: A9576)
6. Dulbecco's Modified Eagle Medium/F12 (Sigma-Aldrich, catalog number: D8437)
7. Sterile 1x Dulbecco's Phosphate Buffered Saline (Sigma-Aldrich, catalog number: D8537)

^{*}For correspondence: hchen@biol.sc.edu.

8. Trypan Blue (Life Technologies, Invitrogen™, catalog number: 15250-061)
9. Tumorsphere medium (500 ml) (see Recipes)

Equipment

1. Incubator with CO₂ input
2. Counting Chamber/Hemocytometer (Hausser Scientific, catalog number: 3200)
3. 96-well Ultra-low Attachment Plates (Corning Incorporated, catalog number: 3474)

Procedure

1. Add B27 supplement (50x) to tumorsphere medium for making 1x concentration as needed for experiments. B27 should be freshly added before each experiment.

Note: The addition of B27 has been shown to increase tumorsphere formation and sustain several passages of sphere cultures (Gu et al., 2001).
2. Harvest cells and suspend the resulting pellet in 5 ml 1x PBS. Keep cells on ice while not in use for the duration of the experiment.
3. Gently mix the suspension and pipette 20 µl of the suspension into an eppendorf tube.
4. Add 20 µl (1:1 ratio) of Trypan Blue to the cells in the eppendorf tube and mix well.
5. Pipette approximately 10 µl of the mixture onto the hemocytometer.
6. Count only the bright cells within the four corner quadrants of the counting chamber for viable cell count.
7. Take the needed number of cells and add the appropriate volume of tumorsphere medium to make the cell concentration at 1 cell/L. Keep this suspension on ice and mixed well for plating.
8. Add 1x PBS to the first and last columns (column 1 and 12) of the 96-well plate to help minimize medium evaporation. This will leave 10 wells available for each row.
9. Seed 200 µl of the cells suspended in tumorsphere medium into each well (200 cells per well).

Note: The number of cells used for tumorsphere formation assays may vary with the cell type.
10. For each cell line or treatment, seed cells into the wells of 2 rows for a total of 20 wells. This will equal a total of 4,000 cells.

11. Seal the upper and lower edges of the 96-well plate with laboratory tape to avoid evaporation of medium and place the cells in an incubator set to 37 °C and supply the cells with 5% CO₂ for one week.

Note: The medium is not changed or added so as to not disturb the formation of the tumorspheres.

12. After one-week incubation, tumorsphere numbers are counted under a phase-contrast microscope using the 40x magnification lens (See Figure 1).
13. Results can be presented as a percentage of the number of tumorspheres present divided by the initial number of cells seeded (4,000 cells).

Recipes

1. Tumorsphere medium (500 ml)
 - 20 ng/ml epidermal growth factor
 - 10 ng/ml basic fibroblast growth factor
 - 5 µg/ml insulin
 - 0.4% Bovine Serum Albumin
 - 500 ml Dulbecco's Modified Eagle Medium/F12

Acknowledgments

This protocol was first described in Lo *et al.* (2012). This work was supported by the Elsa U. Pardee Cancer Foundation grant (B94AFFAA), the American Cancer Society Research Award (RSG-10-067-01-TBE) to HC and NIH grant (3P20RR017698-08) to HC and QW.

References

1. Gu Y, Fu J, Lo P, Wang S, Wang Q, Chen H. The effect of B27 supplement on promoting *in vitro* propagation of Her2/neutransformed mammary tumorspheres. *J Biotech Res.* 2011; 3:7–18.
2. Liu JC, Deng T, Lehal RS, Kim J, Zacksenhaus E. Identification of tumorsphere- and tumor-initiating cells in HER2/Neu-induced mammary tumors. *Cancer Res.* 2007; 67(18):8671–8681. [PubMed: 17875707]
3. Lo PK, Kanojia D, Liu X, Singh UP, Berger FG, Wang Q, Chen H. CD49f and CD61 identify Her2/neu-induced mammary tumor-initiating cells that are potentially derived from luminal progenitors and maintained by the integrin-TGFbeta signaling. *Oncogene.* 2012; 31(21):2614–2626. [PubMed: 21996747]

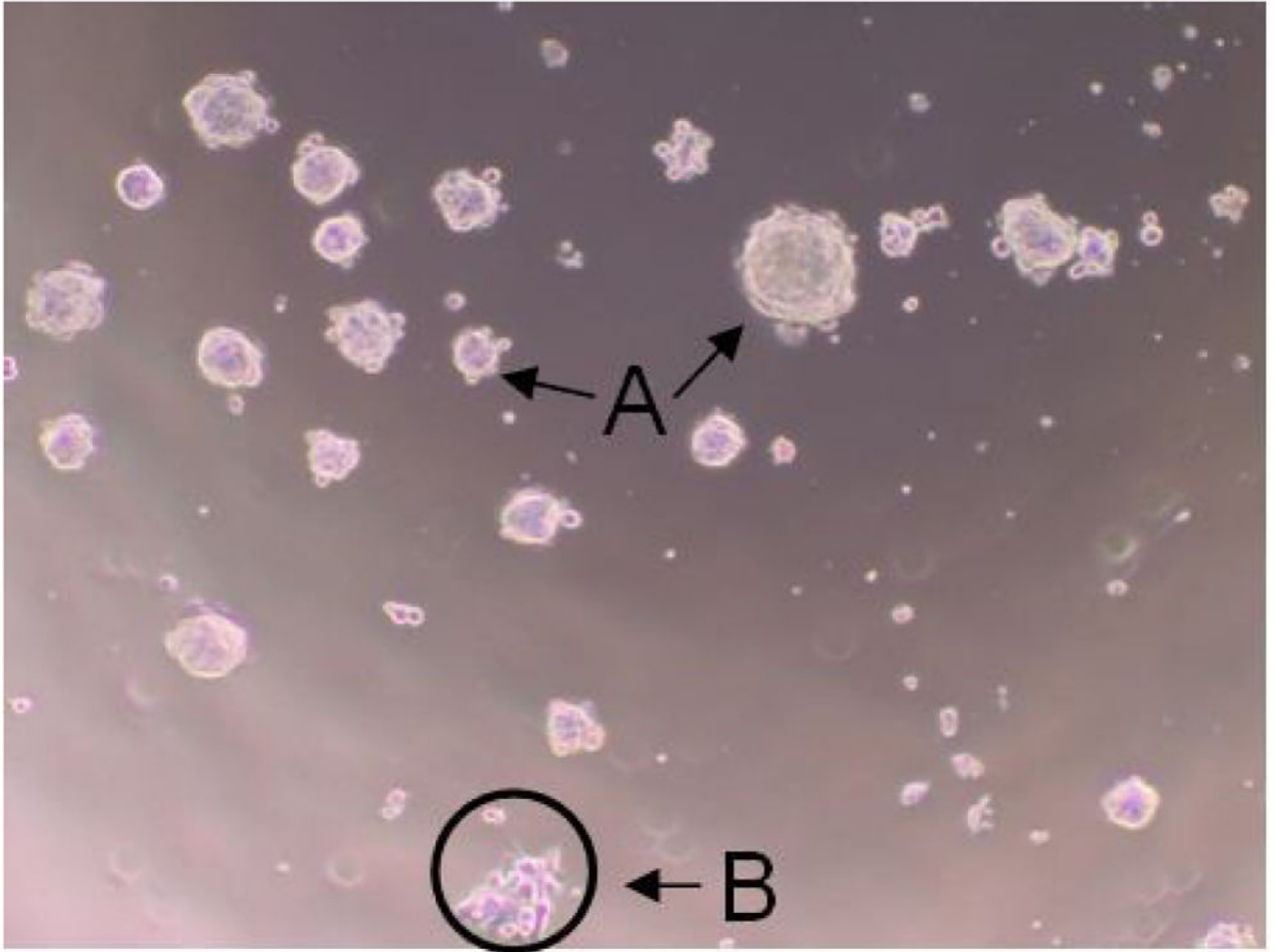


Figure 1. Shows tumorspheres formed by HCC1954 cells after 7 day incubation
The solid, circular formations represent tumorspheres (a). The individual or aggregated cells are not considered tumorspheres (b).