

Re-silencing of silent synapses unmasks anti-relapse effects of environmental enrichment

Yao-Ying Ma^{a,1}, Xiusong Wang^b, Yanhua Huang^b, Helene Marie^c, Eric J. Nestler^d, Oliver M. Schlüter^a, and Yan Dong^{a,b,2}

^aDepartment of Neuroscience, University of Pittsburgh, PA 15260; ^bDepartment of Psychiatry, University of Pittsburgh, PA 15260; ^cInstitut de Pharmacologie Moléculaire et Cellulaire, CNRS, Université de Nice Sophia Antipolis, UMR 7275, 06250 Valbonne, France; and ^dFishberg Department of Neuroscience and Friedman Brain Institute, Icahn School of Medicine at Mount Sinai, New York, NY 10029

Edited by Richard L. Haganir, The Johns Hopkins University School of Medicine, Baltimore, MD, and approved March 18, 2016 (received for review December 15, 2015)

Environmental enrichment (EE) has long been postulated as a behavioral treatment for drug addiction based on its preventive effects in animal models: rodents experiencing prior EE exhibit increased resistance to establishing drug taking and seeking. However, the therapeutic effects of EE, namely, the effects of EE when applied after drug exposure, are often marginal and transient. Using incubation of cue-induced cocaine craving, a rat relapse model depicting progressive intensification of cocaine seeking after withdrawal from cocaine self-administration, our present study reveals that after cocaine withdrawal, *in vivo* circuit-specific long-term depression (LTD) unmasks the therapeutic power of EE to achieve long-lasting anti-relapse effects. Specifically, our previous results show that cocaine self-administration generates AMPA receptor (AMPA)-silent excitatory synapses within the basolateral amygdala (BLA) to nucleus accumbens (NAc) projection, and maturation of these silent synapses via recruiting calcium-permeable (CP) AMPARs contributes to incubation of cocaine craving. Here, we show that after cocaine withdrawal and maturation of silent synapses, the BLA-to-NAc projection became highly resistant to EE. However, optogenetic LTD applied to this projection *in vivo* transiently re-silenced these silent synapses by removing CP-AMPARs. During this transient window, application of EE resulted in the insertion of nonCP-AMPARs, thereby remodeling the “incubated” BLA-to-NAc projection. Consequently, incubation of cocaine craving was decreased persistently. These results reveal a mechanistic basis through which the persistent anti-relapse effects of EE can be unleashed after drug withdrawal.

environmental enrichment | cocaine | incubation | silent synapse | accumbens

Environmental enrichment (EE) promotes neurocircuit development and improves brain recovery from disease conditions and has long been hypothesized as a behavioral therapy for drug addiction (1–4). Whereas animal studies demonstrate clear preventive effects of EE [i.e., animals experiencing prior EE exhibit increased resistance to establishing drug taking and seeking (5–7)], the therapeutic effects of EE, namely, the effects of EE when applied after drug exposure, are less consistent. For example, in the incubation of cue-induced cocaine-craving model in rats, where cocaine seeking progressively intensifies during prolonged withdrawal from cocaine self-administration (8, 9), EE applied after cocaine self-administration only marginally reduces incubation of cocaine craving, and any anti-incubation effect observed disappears upon termination of EE treatment (10–13). These results raise both opportunities and challenges for EE-based treatment of drug addiction.

Incubation of cocaine craving is partially mediated by synaptic accumulation of calcium permeable (CP) AMPA receptors (AMPARs) in the nucleus accumbens (NAc) (14, 15). A portion of these CP-AMPARs move into cocaine-generated silent excitatory synapses within the projection from the basolateral amygdala (BLA) pyramidal neurons to NAc medium spiny neurons (MSNs) (16), a critical projection in cue-induced drug seeking (17, 18).

Abundant in the developing brain, silent synapses express stable NMDA receptors (NMDARs), with AMPARs that are either absent or highly labile. Silent synapses are potentially immature nascent synapses that can mature by recruiting AMPARs to strengthen a particular circuit (19–23). In the adult brain, exposure to cocaine generates silent synapses (24, 25), a process that may involve reopening of developmental mechanisms (26). Cocaine-induced generation and subsequent maturation of silent synapses profoundly remodel excitatory projections to NAc from BLA and likely other brain regions, contributing to incubated cocaine seeking (16, 27).

A clear link between EE and AMPAR trafficking has long been established in hippocampal and cortical regions, in which EE promotes synaptic insertion of nonCP-AMPARs, increases the size of dendritic spines, and facilitates long-term potentiation (LTP) (4, 28–31). In the NAc, EE induces several proteomic alterations that promote strengthening and maturation of excitatory synapses (32). However, the synaptic-strengthening effects tend to be robust only in developing or recently damaged brains, in which relatively weak and immature synapses are abundant (29, 31, 33, 34). After cocaine withdrawal, excitatory synapses are substantially strengthened in the NAc, partially through the insertion of CP-AMPARs to cocaine-generated silent synapses (14, 16, 27, 35). This withdrawal-associated synaptic strengthening may compromise insertion of additional nonCP-AMPARs by subsequent EE, thus undermining EE’s anti-relapse effects.

In an attempt to reveal potential anti-relapse effects of EE, we combined a 7-d EE treatment with an optogenetic protocol to induce long-term depression (LTD) in the BLA-to-NAc projection after cocaine withdrawal. Our results suggest that,

Significance

Although long postulated as a behavioral therapy for drug addiction, environmental enrichment (EE) applied alone achieves only marginal and transient anti-addiction effects. Here, we report that, after cocaine withdrawal, EE alone did not affect the amygdala-to-nucleus accumbens projection, which has been critically implicated in cocaine craving and seeking. However, *in vivo* optogenetic long-term depression (LTD) at this projection primed a portion of affected synapses to remodel upon EE, leading to long-lasting anti-relapse effects. Thus, projection-specific LTD unmasks the anti-relapse power of EE, indicating the synergy of combinatory approaches for treating addiction.

Author contributions: Y.-Y.M., Y.H., H.M., E.J.N., O.M.S., and Y.D. designed research; Y.-Y.M. and X.W. performed research; Y.-Y.M. analyzed data; and Y.-Y.M., Y.H., E.J.N., O.M.S., and Y.D. wrote the paper.

The authors declare no conflict of interest.

This article is a PNAS Direct Submission.

¹Present address: Department of Psychology, Binghamton University, State University of New York, Binghamton, NY 13902.

²To whom correspondence should be addressed. Email: yandong@pitt.edu.

This article contains supporting information online at www.pnas.org/lookup/suppl/doi:10.1073/pnas.1524739113/-DCSupplemental.

after LTD-induced internalization of CP-AMPA receptors from matured silent synapses, and re-silencing of cocaine-generated silent synapses during cocaine withdrawal, subsequent EE promotes the insertion of nonCP-AMPA receptors to those LTD-re-silenced synapses in the BLA-to-NAc projection. These combined approaches achieve a prolonged anti-incubation effect. We propose that re-silencing of silent synapses unleashes the anti-relapse effect of EE, resulting in reduced cocaine craving after withdrawal.

Results

After 6 d of cocaine self-administration, rats developed incubation of cue-induced cocaine craving (16), which was evident in a 1-h extinction test where rats exhibited significantly higher levels of cocaine seeking on withdrawal day 45 than withdrawal day 1 (measured by nose pokes for cocaine; Fig. 1A).

Our previous results suggest that incubation of cocaine craving is initiated in part by cocaine-induced generation of silent synapses in the BLA-to-NAc projection, followed by maturation of a subset of these cocaine-generated silent synapses, whereas in vivo application of an optogenetic LTD protocol targeting the BLA-to-NAc projection reverses maturation of silent synapses and reverses the development of cocaine incubation (16, 26). These results reveal a therapeutic potential of projection-specific in vivo LTD; however, our present results show that such anti-

relapse effects were relatively transient. After 45-d withdrawal, the percentage of silent synapses among BLA-to-NAc synapses returned to basal levels (saline-exposed rats) in cocaine-exposed rats without LTD (sham LTD), accompanied by increased sensitivity of BLA-to-NAc synapses to the CP-AMPA-selective antagonist 1-naphthylthylacetyl spermine trihydrochloride (Naspm) (Fig. 1C–F and Fig. S1A–J and L–N). These results are consistent with previous findings suggesting that cocaine-generated silent synapses within the BLA-to-NAc projection are “unsilenced” through a maturation process involving the recruitment of CP-AMPA receptors (16). The percentage of silent synapses at this cocaine withdrawal time point was increased immediately (1–6 h) after the BLA-to-NAc-specific LTD in vivo, which was accompanied by a loss of sensitivity of BLA-to-NAc synapses to Naspm (Fig. 1C–F and Fig. S1A–J and L–N), suggesting that this LTD protocol induces internalization of CP-AMPA receptors and re-silences matured silent synapses (16). The correlations between disappearance/reappearance of silent synapses and appearance/disappearance of Naspm sensitivity suggest that internalization and reinsertion of CP-AMPA receptors mediate the re-silencing and rematuration of silent synapses, respectively. However, the re-silenced synapses within the BLA-to-NAc projection disappeared 24 h after LTD, accompanied by recovered sensitivity of BLA-to-NAc synapses to the CP-AMPA-selective antagonist Naspm (Fig. 1C–F and Fig. S1A–J

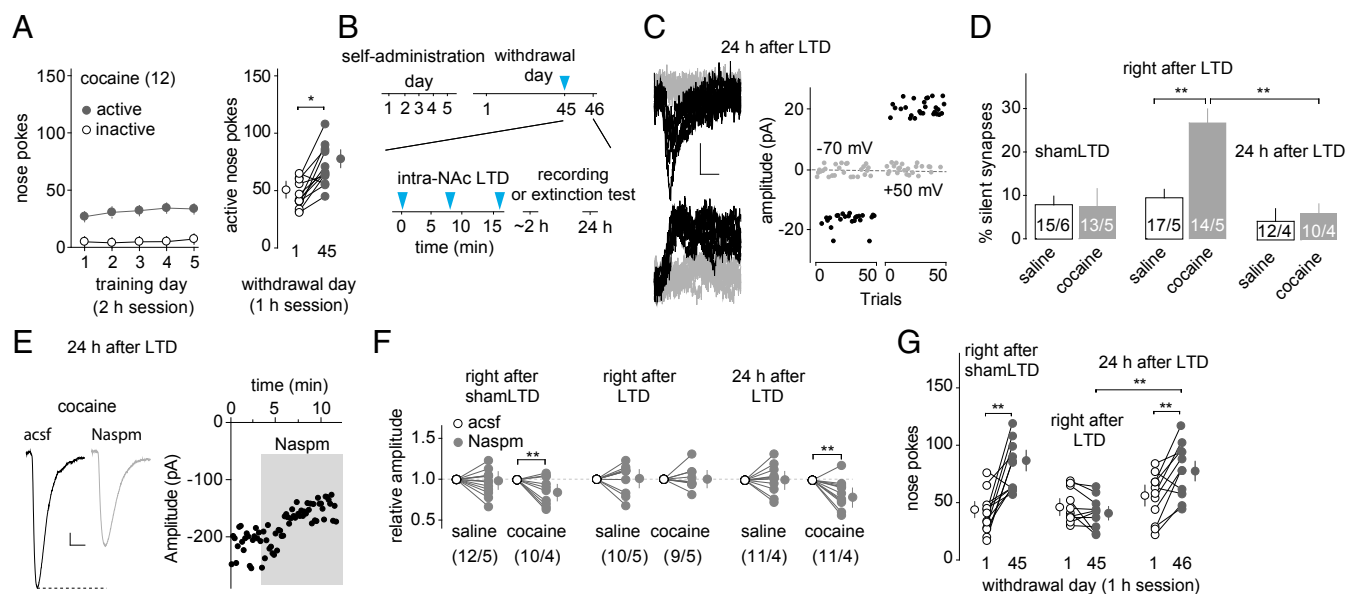


Fig. 1. Transient anti-incubation effects of BLA-to-NAc LTD. (A) Summarized results showing that, after 5 d of cocaine self-administration (2 h/d at 0.75 mg/kg) following an overnight training, cue-induced cocaine seeking (measured by nose pokes in a 1-h extinction) was increased 45 d after withdrawal from cocaine compared with withdrawal day 1 [$t_{(11)} = 4.87$; $P < 0.01$, paired t test; the same rats tested on withdrawal days 1 and 45]. (B) Time line of behavioral procedure showing that in vivo LTD induction (blue arrows, 5 Hz \times 3 min \times 3 times with 5-min intervals) was applied to BLA-to-NAc synapses 45 d after saline or cocaine self-administration. Electrophysiology or extinction tests were performed either right after or 24 h after BLA-to-NAc LTD. (C) Example EPSCs evoked at -70 or $+50$ mV from BLA-to-NAc synapses by optogenetic minimal stimulations (Left) over 100 trials (Right) 24 h after in vivo LTD in rats after 45 d of cocaine withdrawal. (D) Summarized results showing that, similar to previous results (16), on withdrawal day 45, whereas the percentage of silent synapses in BLA-to-NAc projection in cocaine-exposed rats returned to basal (saline) levels, this percentage was significantly increased upon LTD induction (LTD: saline, 9.5 ± 1.8 ; cocaine, 26.3 ± 2.9 ; shamLTD: saline, 8.1 ± 2.0 ; cocaine, 8.1 ± 5.1 , measured right after LTD/shamLTD), and this LTD effect on the percentage of silent synapses diminished after 24 h [saline, 4.3 ± 3.1 ; cocaine, 6.2 ± 1.9 ; $F_{(2,23)} = 4.7$, $P < 0.05$, two-way ANOVA; $P < 0.01$, right after LTD vs. 24 h after LTD in cocaine groups; $P < 0.01$, saline right after LTD vs. cocaine right after LTD; Bonferroni posttest]. n/m, n cells from m rats. (E) Example EPSCs (Left) and the time course (Right) of BLA-to-NAc synapses before and during perfusion of Naspm in a cocaine-exposed rat 24 h after the withdrawal day 45 LTD. (F) Summarized results showing that on withdrawal day 45, in vivo LTD, but not shamLTD, abolished the cocaine withdrawal-induced increase in the sensitivity of EPSCs at BLA-to-NAc synapses to Naspm when tested right after LTD induction. This LTD effect diminished after 24 h. Evoked EPSCs at BLA-to-NAc synapses in saline-exposed rats were insensitive to Naspm right after shamLTD, right after LTD, or 24 h after LTD [$F_{(5,21)} = 4.2$, $P < 0.01$, two-way ANOVA with repeated measures; $P < 0.01$, before vs. during Naspm in cocaine rats right after shamLTD; $P < 0.01$, before vs. during Naspm in cocaine rats 24 h after LTD]. (G) Summarized results showing that incubation of cocaine craving (increased number of nose pokes for cocaine on withdrawal day 45 or 46 compared with withdrawal day 1) was not affected right after shamLTD to BLA-to-NAc synapses and was abolished right after LTD, but this LTD effect diminished after 24 h [$F_{(2,30)} = 10.9$, $P < 0.01$, two-way ANOVA with repeated measures; $P < 0.01$, withdrawal day 1 vs. day 45 in rats right after shamLTD or 24 h after LTD, Bonferroni posttest]. * $P < 0.05$; ** $P < 0.01$.

Subsequent behavioral results (Fig. 2I and Fig. S2I) are consistent with the interpretation of the above cellular findings. Specifically, 7-d SE after *in vivo* LTD did not affect the recovery of incubated cocaine craving, tested right after SE exposure (on withdrawal day 53). Whereas 7-d EE following sham LTD did not affect incubation of cocaine craving, the same EE applied after *in vivo* LTD prevented the recovery of incubated cocaine craving. Thus, BLA-to-NAc LTD appears to re-silence cocaine-generated silent synapses in this projection, and this priming process unleashes the anti-incubation effects of EE.

To determine whether the anti-incubation effects of the combined LTD and EE treatment are long-lasting, we applied BLA-to-NAc LTD 45 d after cocaine self-administration, followed by 7-d EE, and then housed these rats in regular SE cages for additional 21 d (Fig. 3A). Cocaine-exposed rats with sham LTD and 7-d EE were used as controls. By the end of the additional 21-d SE (on overall withdrawal day 73), BLA-to-NAc silent synapses remained at basal (control) levels in EE rats with sham LTD, accompanied by high Naspm sensitivity of BLA-to-NAc synapses (Fig. 3B–G and Fig. S3A–D, F, and G) as well as incubated cocaine craving (Fig. 3H and Fig. S3E). In contrast, in EE rats with *in vivo* LTD and additional 21-d SE housing, although BLA-to-NAc silent synapses returned to basal (control) levels, the Naspm sensitivity of BLA-to-NAc synapses remained low (Fig. 3B–G and Fig. S3A–D), and these rats (LTD-EE) did not redevelop incubation of cocaine craving (Fig. 3H and Fig.

S3E). Thus, EE combined with BLA-to-NAc LTD achieved a long-lasting anti-incubation effect.

Discussion

Our current results support a linear cellular cascade at BLA-to-NAc excitatory synapses following cocaine self-administration, withdrawal, *in vivo* LTD, and EE. Specifically, our findings suggest that: (i) cocaine self-administration generates silent synapses in the BLA-to-NAc projection; (ii) during withdrawal, silent synapses mature in this projection by recruiting CP-AMPA receptors; (iii) LTD re-silences these matured silent synapses by internalizing CP-AMPA receptors; and (iv) EE promotes insertion of nonCP-AMPA receptors to those regenerated silent synapses (Fig. 3I). The result is a sustained synaptic change in the BLA-to-NAc projection and a sustained reduction in cocaine seeking. Whereas this model is the most parsimonious explanation of the present data, other possibilities exist. For example, instead of insertion of nonCP-AMPA receptors, it is possible that EE promotes elimination of re-silenced synapses. Along this scenario, an earlier study shows that EE facilitates both LTP and LTD at excitatory synapses, indicating bidirectional effects of EE (36). In addition, EE activates microglia (37), which may promote synapse elimination. Although these possibilities cannot be ruled out, the extensive and coherent effects of EE on promoting circuitry formation and strengthening synapses (4) indicate that

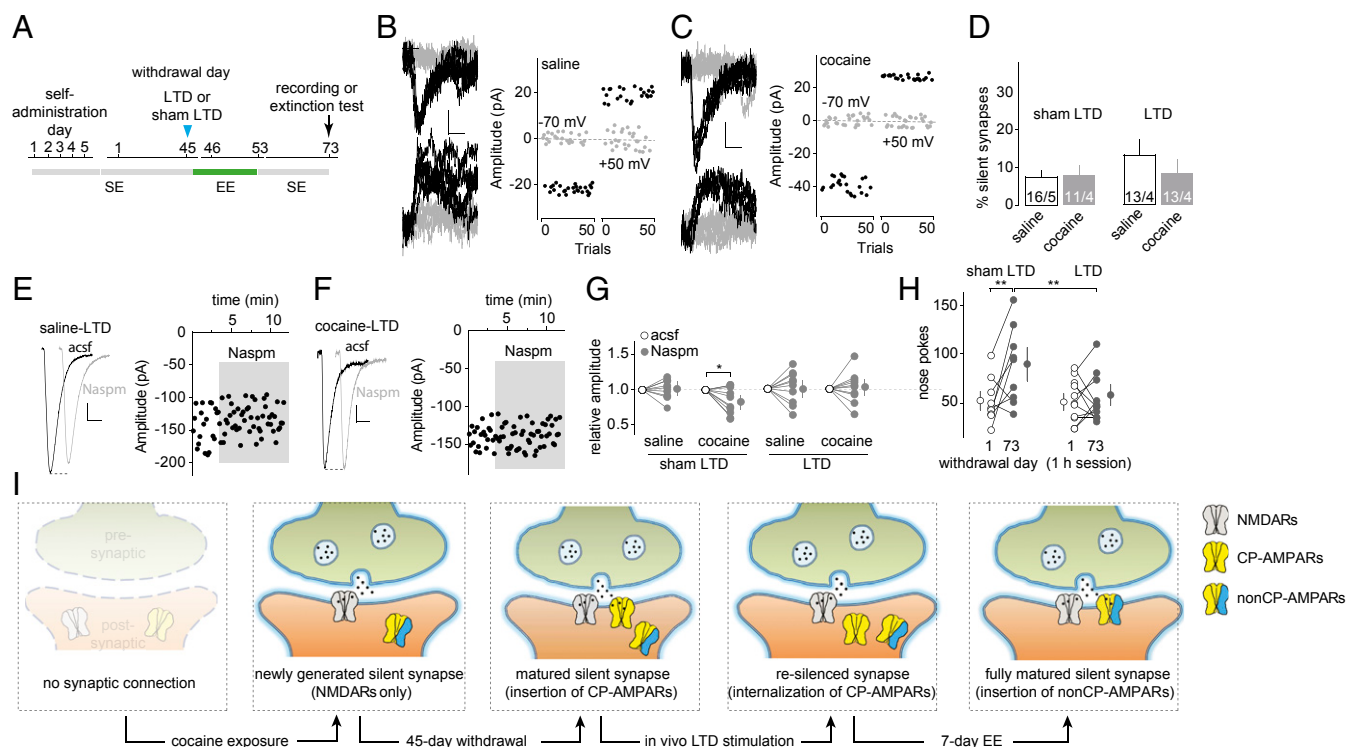


Fig. 3. Long-lasting anti-incubation effects by LTD-EE combination. (A) Time line showing the time points of manipulations after withdrawal from saline or cocaine self-administration. (B and C) EPSCs evoked at -70 or $+50$ mV by optogenetic minimal stimulations (Left) over 100 trials (Right) from example recordings in saline-exposed (B) or cocaine-exposed (C) rats with 21-d SE after BLA-to-NAc LTD on withdrawal day 45 and subsequent 7-d EE. (D) Summarized results showing a low the percentage of silent synapses in BLA-to-NAc projections in all manipulation groups [saline-shamLTD, 7.6 ± 1.5 ; cocaine-shamLTD, 7.8 ± 2.4 ; saline-LTD, 13.3 ± 3.8 ; cocaine-LTD, 8.6 ± 2.9 ; $F_{(1,13)} = 0.9$, $P = 0.37$, two-way ANOVA]. (E and F) Example EPSCs (Left) and time course (Right) before and during perfusion of Naspm in saline-exposed (E) or cocaine-exposed (F) rats with 21-d SE after BLA-to-NAc LTD on withdrawal day 45 and subsequent 7-d EE. (G) Summarized results showing that LTD-EE-induced abolishment of Naspm sensitivity of BLA-to-NAc synapses in cocaine-exposed rats persisted after an additional 21-d SE housing [$F_{(3,13)} = 3.5$, $P < 0.05$, two-way ANOVA with repeated measures; $P < 0.05$, before vs. during Naspm in cocaine rats with shamLTD, Bonferroni posttest]. (H) Summarized result showing that LTD-EE-induced reduction in cocaine incubation also persisted over an additional 21-d SE [$F_{(1,18)} = 5.3$, $P < 0.05$, two-way ANOVA with repeated measures; $P < 0.01$, withdrawal day 1 vs. day 73 in rats with shamLTD; $P < 0.01$, shamLTD vs. LTD on withdrawal day 73, Bonferroni posttest]. (I) Schemes showing the hypothesized dynamics of cocaine-generated silent synapses in the BLA-to-NAc projection after cocaine withdrawal, upon *in vivo* LTD and EE effects after LTD.

insertion of AMPARs is likely the predominant cellular effect of EE in cocaine-exposed rats after LTD.

If the switch from CP-AMPA receptors to nonCP-AMPA receptors is the major cellular consequence of LTD-EE treatment that mediates its anti-incubation effect, how does this switch change NAc neuronal function and associated behaviors? Answers to this question may lie in the unique properties of CP-AMPA receptors. One important feature of CP-AMPA receptors is their higher single-channel conductance compared with nonCP-AMPA receptors (22 vs. 8.8 pS) (38). Thus, newly matured silent synapses and potentially new BLA-to-NAc branches/projections, although a minority by number, are functionally predominant. As such, replacing CP-AMPA receptors with nonCP-AMPA receptors can sharply dilute the behavioral influence of these new, silent synapse-created circuits. Another feature of CP-AMPA receptors is their Ca^{2+} permeability. In CP-AMPA receptor-containing spines, $[\text{Ca}^{2+}]$ remains relatively high upon continuous synaptic activity *in vivo*. Ca^{2+} -dependent signals that regulate postsynaptic properties, such as sensitization–desensitization of synaptic receptors, receptor conductance, and subcellular location of receptors, are therefore tonically activated, resulting in different forms of synaptic transmission and plasticity. In addition, many types of ion channels (e.g., Ca^{2+} -activated K^+ channels) are either directly activated by Ca^{2+} or regulated indirectly by Ca^{2+} signaling. Tonic activation/regulation of these ion channels may influence the propagation of synaptic responses from these CP-AMPA receptor-containing spines to soma. Thus, switching CP-AMPA receptors with nonCP-AMPA receptors in matured silent synapses, even without structural changes, may effectively alter the information flow through these synapses.

Why does EE selectively insert nonCP-AMPA receptors after the matured silent synapses were “reopened” by LTD in cocaine-exposed rats? In the hippocampus, developmentally generated silent synapses are prone to recruit GluA1-homomeric AMPARs (i.e., CP-AMPA receptors) via an experience-dependent process involving activation of NMDARs and CaMKII signaling (39, 40). Similarly, within the BLA and infralimbic projections to NAc, cocaine-generated silent synapses mature by recruiting CP-AMPA receptors, also likely associated with NMDAR/CaMKII-dependent processes (16, 27). After LTD induction, CP-AMPA receptors are likely to be transiently internalized (Fig. 1), and because of the high tonic activity of CaMKII and other signaling cascades (41), CP-AMPA receptors are reinserted shortly after LTD as a default route. In contrast, the synapse-promoting effects of EE are largely mediated by more long-lasting forms of structural and even transcriptional regulation, involving PSD-95, neurotrophins, and glial signals that promote synaptic maturation (4). These multidimensional synapse-nurturing effects of EE may compete and eventually predominate after *in vivo* LTD in cocaine-exposed rats, resulting in insertion of nonCP-AMPA receptors and attenuation of cocaine craving.

By detecting the dynamic evolution of cocaine-generated silent synapses, our present study reveals that priming the synaptic state in key NAc afferent pathways is essential for EE to achieve robust and sustained anti-relapse effects. These results provide a mechanistic basis to understand EE and related behavioral therapies for treating drug addiction.

Materials and Methods

Detailed experimental procedures are provided in *SI Materials and Methods*.

Subjects. Male Sprague–Dawley rats (Harlan) at postnatal days 28–30 were used at the beginning of the experiments. The rats were used in all experiments in accordance with protocols approved by the Institutional Animal Care and Use Committee at the University of Pittsburgh or Mount Sinai School of Medicine.

SE and EE housing. In the SE housing condition, rats were singly housed in typical rodent cages (38 cm long \times 26 cm wide \times 18 cm high). In the EE housing condition, which was modified from previously established EE cages

(42), rats were housed in a large plastic cage (93 cm long \times 53.3 cm wide \times 49.5 cm high), which contained objects including toys, tunnels of different shapes, running wheels, and a wooden ladder attached to a metal platform.

Behavioral Studies.

Drugs. Cocaine HCl [Provided by the National Institute on Drug Abuse (NIDA) Drug Supply Program] was dissolved in 0.9% NaCl saline. Ketamine and xylazine were mixed for anesthesia.

Viral delivery. A 26-gauge injection needle was used to bilaterally inject 1 μL (0.2 $\mu\text{L}/\text{min}$) of the AAV2-ChR2-YFP solution via Hamilton syringe into the BLA [anterior and posterior (AP): -2.50 mm; medial and lateral (ML): ± 4.80 mm; dorsal and ventral (DV): -8.50 mm].

***i.v.* self-administration training.** Cocaine self-administration training began 5–14 d after surgery. On day 1, rats were placed in the self-administration chamber for an overnight training session on a fixed-ratio 1 (FR1) reinforcement schedule. A nose poke into the active hole resulted in a cocaine infusion (0.75 mg/kg in 0.10 mL over 6 s) and illumination of a conditioned stimulus (CS) light inside the nose poke hole. The CS light remained on for 6 s, whereas the house light was illuminated for 20 s, during which nose pokes to the active hole were counted but resulted in no cocaine infusions. After the 20 s, the house light was turned off, and the next nose poke in the active hole resulted in a cocaine infusion again. Nose pokes in the inactive hole had no reinforcement consequences but were recorded. Rats that received at least 40 cocaine infusions during the overnight session were moved on into the 5-d self-administer procedure, in which, ~ 24 h after the overnight training, rats were allowed to self-administer cocaine 2 h/d for 5 consecutive days on a FR1 reinforcement schedule. Same or similar cocaine self-administration procedures and standards were used in our previous studies (43–45). Rats that did not meet the overnight number of infusions criterion ($n = 5$) were removed from the study.

Measurement of cue-induced cocaine seeking after withdrawal. We assessed incubation of cue-induced cocaine craving in an extinction test (1 h) conducted after 1 or 45 d of withdrawal from cocaine self-administration. During the test, active nose pokes resulted in contingent delivery of the CS but not cocaine. For behavioral assays without electrophysiology, we used within-subject assessment (46, 47); the same rats were tested for cocaine seeking on withdrawal days 1 and 45, 46, 53, or 73. For electrophysiology experiments, we used between-subject assessments; different groups of rats were killed on withdrawal day 1, 45, 46, 53, or 73 without the extinction test.

Optogenetic Procedures. For *in vivo* optical control of the BLA-to-NAc projection, two 105- μm core optic fibers were modified for the attachment to an internal cannula, creating the optical neural interface (ONI). The ONI was attached with a fiber channel/physical contact (FC/PC) adaptor to a 473-nm blue laser diode (IkeCool), and light pulses were generated through a stimulator (A-M Systems). The light intensity through the optical fiber, which was measured by a light sensor (S130A; Thor Labs), was adjusted to ~ 10 mW. Before attaching to the ONI, the rat was briefly sedated with isoflurane. Once the rat was fully awake, an optogenetic LTD protocol was administered at 5 Hz \times 3 min \times 3 times, with a 5-min interval (laser pulse duration, 1.0 ms). Once this 19-min LTD protocol was concluded, the rat was placed in a testing chamber. Control rats were also briefly sedated with isoflurane, and a sham optic fiber was attached to the head-mounted guide cannula. After fully awake, the rats remained in their home cages for 19 min and were then placed into a testing chamber.

Data Acquisition and Analysis. In all electrophysiology experiments, the data were coded such that the experimenters were not aware of the treatments of the animals when performing data analysis. Data were decoded after data analysis for final presentation. All results are shown as means \pm SEM. Each experiment was replicated in at least three to four rats (one to three cells were recorded from each rat) for electrophysiological analysis and eight rats for behavioral tests. No data points were excluded unless specified in the experimental procedure. All results were analyzed using animal-based statistics. For experiments in which the end points were from individual cells, such as EPSCs, the percentage of silent synapses, and Nasp sensitivity (Figs. 1 *D* and *F*, 2 *E* and *H*, and 3 *D* and *G*), we used the averaged value of a parameter from all cells recorded from an animal to represent the parameter of this animal.

ACKNOWLEDGMENTS. This research was supported by National Institutes of Health (NIH) Extramural Grants DA035805 (to Y.H.), MH101147 (to Y.H.), DA008227 (to E.J.N.), DA014133 (to E.J.N.), DA023206 (to Y.D.), DA034856 (to Y.D.), and DA040620 (to E.J.N. and Y.D.).

1. Renner MJ, Rosenzweig MR (1987) The golden-mantled ground squirrel (*Spermophilus lateralis*) as a model for the effects of environmental enrichment in solitary animals. *Dev Psychobiol* 20(1):19–24.
2. van Praag H, Kempermann G, Gage FH (2000) Neural consequences of environmental enrichment. *Nat Rev Neurosci* 1(3):191–198.
3. Stairs DJ, Bardo MT (2009) Neurobehavioral effects of environmental enrichment and drug abuse vulnerability. *Pharmacol Biochem Behav* 92(3):377–382.
4. Nithianantharajah J, Hannan AJ (2006) Enriched environments, experience-dependent plasticity and disorders of the nervous system. *Nat Rev Neurosci* 7(9):697–709.
5. Smith JK, Neill JC, Costall B (1997) Post-weaning housing conditions influence the behavioural effects of cocaine and d-amphetamine. *Psychopharmacology (Berl)* 131(1):23–33.
6. Gipson CD, Beckmann JS, El-Maraghi S, Marusich JA, Bardo MT (2011) Effect of environmental enrichment on escalation of cocaine self-administration in rats. *Psychopharmacology (Berl)* 214(2):557–566.
7. Hoffer RS, Prendergast MA, Bardo MT (2015) Pharmacological manipulation of glucocorticoid receptors differentially affects cocaine self-administration in environmentally enriched and isolated rats. *Behav Brain Res* 283:196–202.
8. Neisewander JL, et al. (2000) Fos protein expression and cocaine-seeking behavior in rats after exposure to a cocaine self-administration environment. *J Neurosci* 20(2):798–805.
9. Grimm JW, Hope BT, Wise RA, Shaham Y (2001) Neuroadaptation. Incubation of cocaine craving after withdrawal. *Nature* 412(6843):141–142.
10. Thiel KJ, et al. (2012) Environmental enrichment counters cocaine abstinence-induced stress and brain reactivity to cocaine cues but fails to prevent the incubation effect. *Addict Biol* 17(2):365–377.
11. Thiel KJ, Pentkowski NS, Peartree NA, Painter MR, Neisewander JL (2010) Environmental living conditions introduced during forced abstinence alter cocaine-seeking behavior and Fos protein expression. *Neuroscience* 171(4):1187–1196.
12. Chauvet C, Goldberg SR, Jaber M, Solinas M (2012) Effects of environmental enrichment on the incubation of cocaine craving. *Neuropharmacology* 63(4):635–641.
13. Chauvet C, Lardeux V, Goldberg SR, Jaber M, Solinas M (2009) Environmental enrichment reduces cocaine seeking and reinstatement induced by cues and stress but not by cocaine. *Neuropsychopharmacology* 34(13):2767–2778.
14. Wolf ME, Tseng KY (2012) Calcium-permeable AMPA receptors in the VTA and nucleus accumbens after cocaine exposure: When, how, and why? *Front Mol Neurosci* 5:72.
15. Conrad KL, et al. (2008) Formation of accumbens GluR2-lacking AMPA receptors mediates incubation of cocaine craving. *Nature* 454(7200):118–121.
16. Lee BR, et al. (2013) Maturation of silent synapses in amygdala-accumbens projection contributes to incubation of cocaine craving. *Nat Neurosci* 16(11):1644–1651.
17. Belin D, Jonkman S, Dickinson A, Robbins TW, Everitt BJ (2009) Parallel and interactive learning processes within the basal ganglia: Relevance for the understanding of addiction. *Behav Brain Res* 199(1):89–102.
18. Bossert JM, Marchant NJ, Calu DJ, Shaham Y (2013) The reinstatement model of drug relapse: Recent neurobiological findings, emerging research topics, and translational research. *Psychopharmacology (Berl)* 229(3):453–476.
19. Isaac JT, Nicoll RA, Malenka RC (1995) Evidence for silent synapses: Implications for the expression of LTP. *Neuron* 15(2):427–434.
20. Liao D, Hessler NA, Malinow R (1995) Activation of postsynaptically silent synapses during pairing-induced LTP in CA1 region of hippocampal slice. *Nature* 375(6530):400–404.
21. Durand GM, Kovalchuk Y, Konnerth A (1996) Long-term potentiation and functional synapse induction in developing hippocampus. *Nature* 381(6577):71–75.
22. Kerchner GA, Nicoll RA (2008) Silent synapses and the emergence of a postsynaptic mechanism for LTP. *Nat Rev Neurosci* 9(11):813–825.
23. Hanse E, Seth H, Riebe I (2013) AMPA-silent synapses in brain development and pathology. *Nat Rev Neurosci* 14(12):839–850.
24. Huang YH, et al. (2009) In vivo cocaine experience generates silent synapses. *Neuron* 63(1):40–47.
25. Koya E, et al. (2012) Silent synapses in selectively activated nucleus accumbens neurons following cocaine sensitization. *Nat Neurosci* 15(11):1556–1562.
26. Dong Y, Nestler EJ (2014) The neural rejuvenation hypothesis of cocaine addiction. *Trends Pharmacol Sci* 35(8):374–383.
27. Ma YY, et al. (2014) Bidirectional modulation of incubation of cocaine craving by silent synapse-based remodeling of prefrontal cortex to accumbens projections. *Neuron* 83(6):1453–1467.
28. Bhatt DH, Zhang S, Gan WB (2009) Dendritic spine dynamics. *Annu Rev Physiol* 71:261–282.
29. Foster TC, Gagne J, Massicotte G (1996) Mechanism of altered synaptic strength due to experience: Relation to long-term potentiation. *Brain Res* 736(1–2):243–250.
30. Green EJ, Greenough WT (1986) Altered synaptic transmission in dentate gyrus of rats reared in complex environments: Evidence from hippocampal slices maintained in vitro. *J Neurophysiol* 55(4):739–750.
31. Naka F, Narita N, Okado N, Narita M (2005) Modification of AMPA receptor properties following environmental enrichment. *Brain Dev* 27(4):275–278.
32. Licht CF, et al. (2014) Environmental enrichment alters protein expression as well as the proteomic response to cocaine in rat nucleus accumbens. *Front Behav Neurosci* 8:246.
33. Jung CK, Herms J (2014) Structural dynamics of dendritic spines are influenced by an environmental enrichment: An in vivo imaging study. *Cereb Cortex* 24(2):377–384.
34. Bednarek E, Caroni P (2011) β -Adducin is required for stable assembly of new synapses and improved memory upon environmental enrichment. *Neuron* 69(6):1132–1146.
35. Loweth JA, Tseng KY, Wolf ME (2014) Adaptations in AMPA receptor transmission in the nucleus accumbens contributing to incubation of cocaine craving. *Neuropharmacology* 76 Pt B:287–300.
36. Artola A, et al. (2006) Long-lasting modulation of the induction of LTD and LTP in rat hippocampal CA1 by behavioural stress and environmental enrichment. *Eur J Neurosci* 23(1):261–272.
37. Ziv Y, et al. (2006) Immune cells contribute to the maintenance of neurogenesis and spatial learning abilities in adulthood. *Nat Neurosci* 9(2):268–275.
38. Ozawa S, Iino M, Tsuzuki K (1991) Two types of kainate response in cultured rat hippocampal neurons. *J Neurophysiol* 66(1):2–11.
39. Shi S, Hayashi Y, Esteban JA, Malinow R (2001) Subunit-specific rules governing AMPA receptor trafficking to synapses in hippocampal pyramidal neurons. *Cell* 105(3):331–343.
40. Zhu JJ, Malinow R (2002) Acute versus chronic NMDA receptor blockade and synaptic AMPA receptor delivery. *Nat Neurosci* 5(6):513–514.
41. Anderson SM, et al. (2008) CaMKII: A biochemical bridge linking accumbens dopamine and glutamate systems in cocaine seeking. *Nat Neurosci* 11(3):344–353.
42. Fischer A, Sananbenesi F, Wang X, Dobbin M, Tsai LH (2007) Recovery of learning and memory is associated with chromatin remodelling. *Nature* 447(7141):178–182.
43. Mu P, et al. (2010) Exposure to cocaine dynamically regulates the intrinsic membrane excitability of nucleus accumbens neurons. *J Neurosci* 30(10):3689–3699.
44. Otaka M, et al. (2013) Exposure to cocaine regulates inhibitory synaptic transmission in the nucleus accumbens. *J Neurosci* 33(16):6753–6758.
45. Suska A, Lee BR, Huang YH, Dong Y, Schlüter OM (2013) Selective presynaptic enhancement of the prefrontal cortex to nucleus accumbens pathway by cocaine. *Proc Natl Acad Sci USA* 110(2):713–718.
46. Lu L, Grimm JW, Hope BT, Shaham Y (2004) Incubation of cocaine craving after withdrawal: A review of preclinical data. *Neuropharmacology* 47(Suppl 1):214–226.
47. Lu L, et al. (2009) Role of ventral tegmental area glial cell line-derived neurotrophic factor in incubation of cocaine craving. *Biol Psychiatry* 66(2):137–145.
48. Pilpel N, Landeck N, Klugmann M, Seeburg PH, Schwarz MK (2009) Rapid, reproducible transduction of select forebrain regions by targeted recombinant virus injection into the neonatal mouse brain. *J Neurosci Methods* 182(1):55–63.
49. Brown TE, et al. (2011) A silent synapse-based mechanism for cocaine-induced locomotor sensitization. *J Neurosci* 31(22):8163–8174.
50. Lobo MK, et al. (2010) Cell type-specific loss of BDNF signaling mimics optogenetic control of cocaine reward. *Science* 330(6002):385–390.
51. Isaac JT, Crair MC, Nicoll RA, Malenka RC (1997) Silent synapses during development of thalamocortical inputs. *Neuron* 18(2):269–280.