

RESEARCH ARTICLE

Species of *Pseudorhabdosynochus* (Monogenea, Diplectanidae) from Groupers (*Mycteroperca* spp., Epinephelidae) in the Mediterranean and Eastern Atlantic Ocean, with Special Reference to the ‘Beverleyburtonae Group’ and Description of Two New Species



CrossMark
click for updates

Amira Chaabane^{1*}, Lassad Neifar¹, Delphine Gey², Jean-Lou Justine³

1 Laboratoire de Biodiversité et Écosystèmes Aquatiques, Faculté des Sciences de Sfax, Université de Sfax, Sfax, Tunisia, **2** UMS 2700 Service de Systématique moléculaire, Muséum National d'Histoire Naturelle, Sorbonne Universités, Paris, France, **3** ISYEB, Institut Systématique, Évolution, Biodiversité, UMR7205 (CNRS, EPHE, MNHN, UPMC), Muséum National d'Histoire Naturelle, Sorbonne Universités, Paris, France

* amirachaabene@hotmail.fr

OPEN ACCESS

Citation: Chaabane A, Neifar L, Gey D, Justine J-L (2016) Species of *Pseudorhabdosynochus* (Monogenea, Diplectanidae) from Groupers (*Mycteroperca* spp., Epinephelidae) in the Mediterranean and Eastern Atlantic Ocean, with Special Reference to the ‘Beverleyburtonae Group’ and Description of Two New Species. PLoS ONE 11 (8): e0159886. doi:10.1371/journal.pone.0159886

Editor: Gordon Langsley, Institut national de la santé et de la recherche médicale - Institut Cochin, FRANCE

Received: April 28, 2016

Accepted: July 8, 2016

Published: August 17, 2016

Copyright: © 2016 Chaabane et al. This is an open access article distributed under the terms of the [Creative Commons Attribution License](https://creativecommons.org/licenses/by/4.0/), which permits unrestricted use, distribution, and reproduction in any medium, provided the original author and source are credited.

Data Availability Statement: All relevant data are within the paper. There are no Supporting Information files.

Funding: This work was supported by Ministère des Affaires Étrangères, France: grant BIOPARMED-ENVIMED, <http://www.mistrals-home.org/spip.php?rubrique82>; and Muséum National d'Histoire Naturelle, France: Grant ATM Barcode, Grant PARSUDMED, <https://www.mnhn.fr/fr>. The funders

Abstract

Pseudorhabdosynochus Yamaguti, 1958 is a species-rich diplectanid genus, mainly restricted to the gills of groupers (Epinephelidae) and especially abundant in warm seas. Species from the Mediterranean are not fully documented. Two new and two previously known species from the gills of *Mycteroperca* spp. (*M. costae*, *M. rubra*, and *M. marginata*) in the Mediterranean and Eastern Atlantic Ocean are described here from new material and slides kept in collections. Identifications of newly collected fish were ascertained by barcoding of cytochrome c oxidase subunit I (COI) sequences. *Pseudorhabdosynochus beverleyburtonae* (Oliver, 1984) Kritsky & Beverley-Burton, 1986 and *P. sosia* Neifar & Euzet 2007 are redescribed from type-specimens and new specimens collected off Tunisia and Libya from *M. marginata* and *M. costae*, respectively. *Pseudorhabdosynochus oliveri* n. sp., from *M. marginata* (type-host) off the Mediterranean coast of France (type-locality), is described from specimens found among voucher specimens of *P. beverleyburtonae* deposited by Guy Oliver in the collection of the Muséum National d'Histoire Naturelle, Paris. *Pseudorhabdosynochus oliveri* is distinguished by the shape of its sclerotised vagina; it was not found in the other localities investigated. *Pseudorhabdosynochus hayet* n. sp. is described from *M. rubra* (type host) off Senegal (type-locality) and Tunisia. *Pseudorhabdosynochus hayet* is morphologically similar to *P. sosia* (type-host: *M. costae*) but was distinguished by differences in measurements of the vagina and male copulatory organ, different host, and divergent COI sequences. The four species (*P. beverleyburtonae*, *P. sosia*, *P. oliveri*, and *P. hayet*) share common characteristics such as squamodiscs with 2 innermost circular rows

had no role in study design, data collection and analysis, decision to publish, or preparation of the manuscript.

Competing Interests: The authors have declared that no competing interests exist.

of rodlets and a similar general structure of the sclerotised vagina; we propose to group them into a ‘beverleyburtonae group’ within *Pseudorhabdosynochus*.

Introduction

Pseudorhabdosynochus Yamaguti, 1958 is a species-rich diplectanid genus [1–4]; its members are mainly restricted to the gills of groupers (Epinephelidae), with a few exceptions, and, since most groupers inhabit warm seas, they are especially numerous in tropical seas [5]. Species from the Mediterranean are not fully documented, although eleven nominal species have been listed [6, 7].

Pseudorhabdosynochus beverleyburtonae (Oliver, 1984) Kritsky & Beverley-Burton, 1986 is a gill parasite of the dusky grouper *Mycteroperca marginata* in the Mediterranean Sea and both sides of the Atlantic [2, 8–11]. We found that three species of *Pseudorhabdosynochus* from groupers assigned to *Mycteroperca* Gill in the Mediterranean Sea and Eastern Atlantic Ocean were morphologically very close to *P. beverleyburtonae*. Among these species, one, namely *P. sosia* Neifar & Euzet, 2007, was already known, and two are new and are described in this paper. Based on the sclerotised vagina, the primary character for species diagnosis within *Pseudorhabdosynochus*, we propose the ‘beverleyburtonae group’ to accommodate them. Monogenean COI sequences were used to complement the morphological analysis of parasites. Fish COI sequences were used to confirm the morphological identification of hosts [12, 13].

Materials and Methods

Fish sampling and identification

Fish were purchased at the fish markets in Sfax and Tunis, Tunisia and in Tripoli, Libya. These were previously caught by fishermen in the nearby coastal waters of the Mediterranean Sea. In all cases, the fish were dead when available for parasitological studies. No permits were required for the described study. Fish were identified morphologically according to keys [14] and books [15], and these identifications were challenged by analyses of COI sequences of individual fish (Table 1). Fish nomenclature follows [16] and [17].

COI sequence of fish host

We used the QIAamp DNA Mini Kit (Qiagen), as per the manufacturer’s instructions, to perform DNA extraction. The 5’ region of the cytochrome oxidase I (COI) mitochondrial gene was amplified with the primers FishF1 (5’-TCAACCAACCACAAAGACATTGGCAC-3’) and FishR1 (5’-TAGACTTCTGGGTGGCCAAAGAATCA-3’) [12]. PCR reactions were performed in 20 µl, containing 1 ng of DNA, 1× CoralLoad PCR buffer, 3 mM MgCl₂, 66 µM of each dNTP, 0.15 µM of each primer, and 0.5 units of Taq DNA polymerase (Qiagen). The amplification protocol was 4 min at 94°C, followed by 40 cycles at 94°C for 30 sec, 48°C for 40 sec, and 72°C for 50 sec, with a final extension at 72°C for 7 min. PCR products were purified and sequenced in both directions on a 3730xl DNA Analyzer 96-capillary sequencer (Applied Biosystems). We used CodonCode Aligner software (CodonCode Corporation, Dedham, MA, USA) to edit sequences, compared them to the GenBank database content with BLAST, and deposited them in GenBank under accession numbers KX255747–KX255751 (Table 1). Species identification was confirmed with the BOLD identification engine [18].

Table 1. Host fish examined, their monogeneans and their COI sequences.

Host species	Fish specimen	Locality	Date	Fish COI, GenBank	Monogenean collected	Monogenean COI, GenBank
<i>M. marginata</i>	Mmargi3	Tunisia	25/09/2014	KX255749 *	<i>P. beverleyburtonae</i>	
<i>M. costae</i>	Mcostae1	Tunisia	13/06/2014	KX255750 *	<i>P. sosia</i>	KX255742 *
<i>M. costae</i>	Mcostae2	Tunisia	13/06/2014	KX255751 *	<i>P. sosia</i>	
<i>M. costae</i>	Mcostae3	Tunisia	15/04/2014	KT805240	<i>P. sosia</i>	
<i>M. costae</i>	Mcostae4	Libya	2013	-	<i>P. sosia</i>	
<i>M. costae</i>	Myco6	Tunisia	17/09/2015	KX255747 *	<i>P. sosia</i>	KX255741 * KX255743 * KX255744 *
<i>M. rubra</i>	Myru01	Libya	06/2013	KX255748 *	<i>P. regius</i>	
<i>M. rubra</i>	Myru02	Tunisia	10/09/2015	KU739518	<i>P. regius</i> <i>P. hayet</i> n. sp.	KX255745 * KX255746 *

*: new sequence.

doi:10.1371/journal.pone.0159886.t001

Details about molecular identification of host fish are provided briefly in the description of the monogenean species.

Monogenean morphology

Diplectanids collected from fish gills were prepared by three methods: a) mounted in ammonium picrate-glycerine [19] (designated as ‘p’); b) mounted in Berlese fluid (designated as ‘b’); and c) dehydrated in an ethanol series, stained with carmine and permanently mounted in Canada balsam (designated as ‘c’) [20]. Specimens were drawn using an Olympus BH2 microscope equipped with drawing apparatus and DIC optics. The terminology for the sclerotised parts, i.e. the male quadriloculate organ and the vagina follows Justine (2007) [1]. Measurements, in micrometres, were taken with the help of a custom-made transparent rule and are expressed as the mean followed in parentheses by the range, the standard deviation when $n \geq 30$, and (n) the number of observations; measurements were taken as in Fig 1 in Chaabane et al. (2015) [6]. The measurements of the right-hand haptoral hard-parts and left-hand equivalents were pooled. The measurements of the holotype are separated and indicated by ‘h’. Drawings were scanned and redrawn on a computer using Adobe Illustrator. The museum abbreviation used is as follows: MNHN, Muséum National d’Histoire Naturelle, Paris.

COI sequence of monogeneans

We used a QIAmp DNA Micro Kit (Qiagen) to extract DNA from whole monogenean specimens. The specific primers COI-ASmit1 (forward 5’-TTTTTTGGGCATCCTGAGGTTTAT-3’) and COI-ASmit2 (reverse 5’-TAAAGAAAGAACATAATGAAAATG-3’) were used to amplify a fragment of 424 bp of the COI gene [21]. The PCR reaction was performed in 20 µl, containing 1 ng of DNA, 1× CoralLoad PCR buffer, 3 mM MgCl₂, 0.25 mM dNTP, 0.15 µM of each primer, and 0.5 units of Taq DNA polymerase (Qiagen). Thermocycles consisted of an initial denaturation step at 94°C for 2 min, followed by 37 cycles of denaturation at 94°C for 30 sec, annealing at 48°C for 40 sec, and extension at 72°C for 50 sec. The final extension was conducted at 72°C for 5 min. Sequences were edited with CodonCode Aligner software (Codon-Code Corporation, Dedham, MA, USA), compared to the GenBank database content with BLAST, and deposited in GenBank under accession numbers KX255741–KX255746 (Table 1).

Pairwise nucleotide distances were assessed using the Kimura 2-parameter (K2P) model [22] in MEGA 7. The phylogenetic tree was constructed using the Neighbour Joining (NJ) method based on the Kimura 2-parameter (K2P) model in MEGA 7 [23]; all codon positions were used.

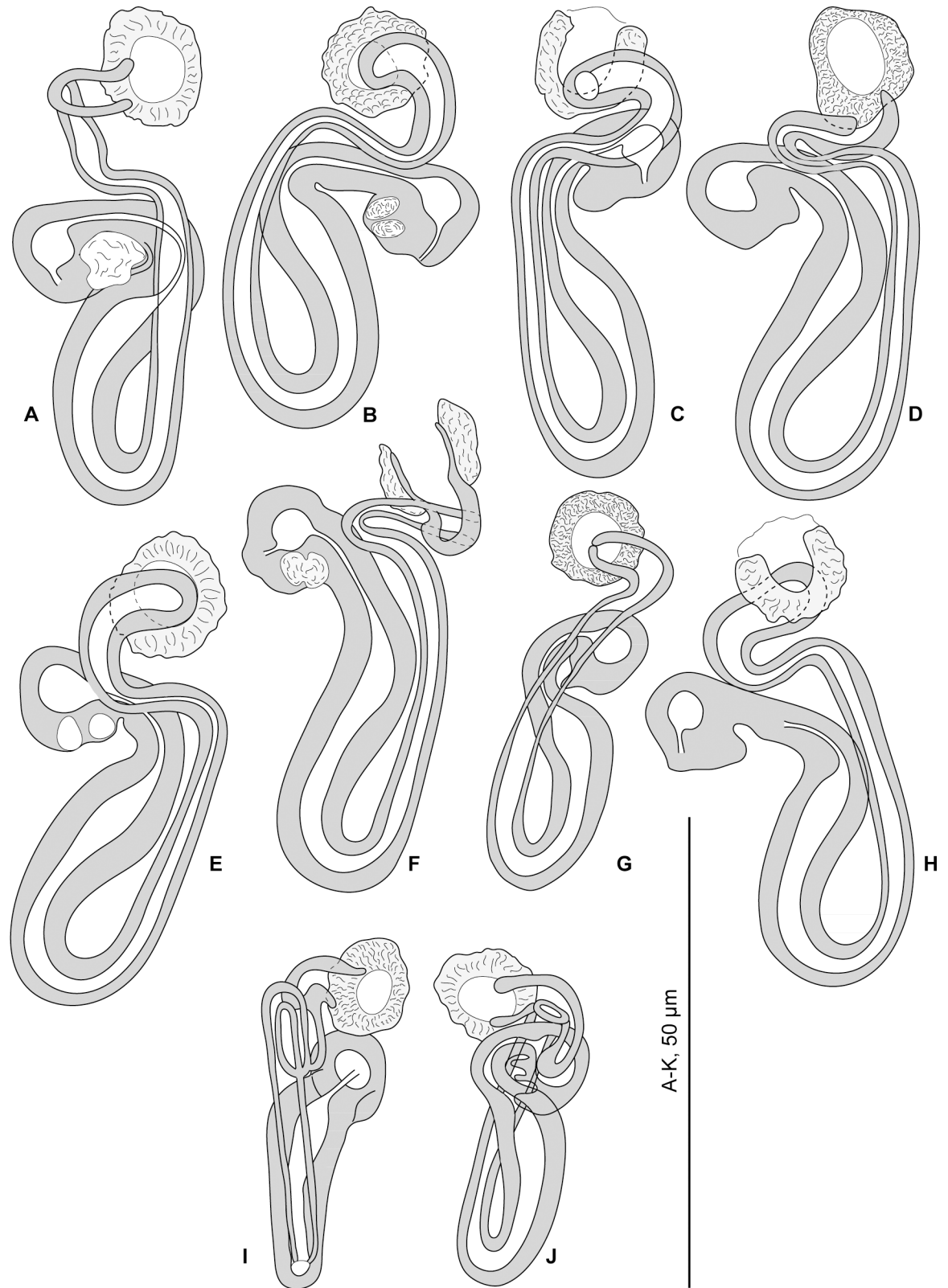


Fig 1. *Pseudorhabdosynochus beverleyburtonae* from *Mycteroperca marginata* in the Mediterranean Sea and Atlantic Ocean, various shapes of sclerotised vagina according to specimens, orientation and preparation. A-F, H, new specimens from Tunisia. G, MNHN HEL466, J, MNHN HEL465, voucher specimens from Brazil. I, MNHN 249H-Tc167, type specimen. A-F, H, Berlese. G, J, Gray and Wess medium. I, carmine.

doi:10.1371/journal.pone.0159886.g001

Nomenclatural acts

The electronic edition of this article conforms to the requirements of the amended International Code of Zoological Nomenclature, and hence the new names contained herein are available under that Code from the electronic edition of this article. This published work and the nomenclatural acts it contains have been registered in ZooBank, the online registration system for the ICZN. The ZooBank LSIDs (Life Science Identifiers) can be resolved and the associated information viewed through any standard web browser by appending the LSID to the prefix “<http://zoobank.org/>”. The LSID for this publication is: urn:lsid:zoobank.org:pub:CB13D383-7994-4BCE-BB8F-A46E874E26D3. The electronic edition of this work was published in a journal with an ISSN, and has been archived and is available from the following digital repositories: PubMed Central, LOCKSS.

Results

Pseudorhabdosynochus beverleyburtonae (Oliver, 1984) Kritsky & Beverley-Burton, 1986

Synonyms: *Diplectanum americanum* of Euzet & Oliver, 1965, *nec* Price, 1937; *Cycloplectanum americanum* (Price, 1937) Oliver, 1968 (pro parte); *Cycloplectanum beverleyburtonae* Oliver, 1984.

Type-host: Dusky grouper, *Mycteroperca marginata* (Lowe) (Perciformes, Epinephelidae) sometimes designated as *Epinephelus guaza* (Linnaeus) or *E. marginatus* (Lowe).

Molecular identification of fish via DNA barcoding: The COI sequence of our specimen (KX255749) (Table 1) was identical to three sequences (KU739519-521) previously obtained from the same fish species in the same locality (Tunisia) [24]. We conclude that our specimen belongs to *M. marginata*.

Site of infection: Gills

Type-locality: Off France, Mediterranean Sea, as “Côte Vermeille, Golfe du Lion, Méditerranée occidentale” [10].

Other localities: Off Rosas, Mediterranean Sea, France [25]; off Banyuls-sur-Mer, France [8, 9]; off Ilhas Cagarras, Rio de Janeiro, Brazil [11]; off Ubatuba, coast of São Paulo, south-eastern Brazil [26]; off Barra Velha, State of Santa Catarina, Brazil [2]; Sfax (fish market), Tunisia (present study). The Bay of Naples, Italy is sometimes indicated as a locality based on Ulmer & James (1981) [27] but this paper does not describe the sclerotised vagina so it could be, in our opinion, any species of *Pseudorhabdosynochus*.

Material examined: 2 type-specimens from off France (MNHN 249H-Tc167, 249H-Tc167bis) collected by Guy Oliver; voucher specimens from off Brazil (MNHN HEL465, HEL466, HEL470, HEL471) collected 3 February 2014 and deposited by Kritsky et al. [2] in the MNHN collection; new specimens collected off Tunisia (MNHN HEL560) (see Table 2).

Prevalence: In our newly examined fish specimen from Tunisia, 1/1.

Redescription (Figs 1 and 2). Measurements of 17 specimens in Berlese from Tunisia; for other specimens see Table 2. Body length b 648 (570–750, n = 6), including haptor; maximum width b 145 (120–180, n = 6) at level of ovary. Tegument smooth. Anterior region with 3 pairs of head organs and 2 pairs of dorsal eye-spots, distance between outer margins of anterior eye-spots b 25 (14–40, n = 16), of posterior eye-spots b 21 (14–37, n = 16). Pharynx median, sub-spherical, length b 36 (29–40, n = 5), width b 32 (25–39, n = 5). Haptor bearing 2 similar squamodiscs, 2 pairs of lateral anchors, 1 ventral bar and 2 lateral (dorsal) bars (Fig 2C–2E) and 14 marginal hooklets. Squamodiscs with 9–12 concentric rows of rodlets; two innermost rows forming circles (Fig 2C and 2D). Rodlets sometimes with visible spurs (‘éperons’). Ventral

Table 2. Measurements of *P. beverleyburtonae* from various sources.

Source	Santos, Buchmann & Gibson, 2000	Kritsky, Bakenhaster & Adams, 2015	Type-specimens, MNHN 249H-Tc167, 249H-Tc167 bis	Slides deposited in MNHN, HEL 465, HEL 466, HEL 470, HEL 471		MNHN HEL560, Present study
Hosts	<i>M. marginata</i>	<i>M. marginata</i>	<i>M. marginata</i>	<i>M. marginata</i>		<i>M. marginata</i>
Locality	Off Ilhas Cagarras, Rio de Janeiro, Brazil	Off Barra Velha, State of Santa Catarina, Brazil	Off Cap Béar, France	Off Barra Velha, State of Santa Catarina, Brazil		Off Sfax, Tunisia
Method	Gomori's trichrome, Mayer's paracarmine	Gomori's trichrome, Gray and Wess medium	Carmine	Gomori's trichrome	Gray and Wess medium	Berlese
n	26	-	2	2	2	17
Body Length	492–617	741 (569–974, n = 24)	510 (490–530, n = 2)	755 (710–800, n = 2)	780 (750–810, n = 2)	648 (570–750, n = 6)
Body Width	114–152	170 (143–235, n = 27)	185 (180–190, n = 2)	165 (130–200, n = 2)	165 (150–180, n = 2)	145 (120–180, n = 6)
Haptor length	61–95	-	-	-	-	-
Haptor Width	73–164	168 (141–197, n = 22)	150 (150–150, n = 2)	-	165 (150–180, n = 2)	-
Pharynx Length	34–48	-	44 (40–48, n = 2)	43 (34–52, n = 2)	44 (38–50, n = 2)	36 (29–40, n = 5)
Pharynx Width	32–41	47 (39–60, n = 31)	44 (40–48, n = 2)	45 (37–52, n = 2)	44 (38–50, n = 2)	32 (25–39, n = 5)
Penis Internal Length	46–82	-	62 (61–62, n = 2)	69 (67–70, n = 2)	68 (63–73, n = 2)	89 (82–100, n = 17)
Penis Cone Length	-	-	10 (9–11, n = 2)	12 (10–13, n = 2)	10 (8–11, n = 2)	11 (7–12, n = 17)
Penis Tube Length	27–55	-	-	-	33 (n = 2)	35 (29–44, n = 17)
Penis Tube Diameter	-	-	3 (n = 2)	-	4 (n = 2)	4 (4–4.5, n = 16)
Penis (chamber + cone) Length	-	84 (75–100, n = 28)	-	-	-	-
Penis Filament Length	-	-	-	-	34 (28–40, n = 2)	-
Sclerotised Vagina Total Length	34–41	-	39 (38–39, n = 2)	44 (43–44, n = 2)	40 (36–43, n = 2)	50 (45–54, n = 17)
Primary Chamber External Diameter	-	-	9 (8–9, n = 2)	7 (n = 2)	7 (n = 2)	9 (7–10, n = 17)
Squamodisc Length	-	56 (47–64, n = 32)	53 (50–60, n = 4)	54 (53–55, n = 2)	55 (54–55, n = 2)	-
Squamodisc Width	41–62	55 (42–67, n = 34)	51 (47–58, n = 4)	52 (51–53, n = 2)	51 (48–54, n = 2)	-
Squamodisc, Number of Rows	10–12	10–12 (usually 12)	10 (9–12, n = 4)	-	-	-
Squamodisc, Number of Closed Rows	2	2–3	2 (n = 4)	2 (n = 2)	-	-
Ventral Anchor Outer Length	39–55	56 (50–61, n = 15)	55 (53–58, n = 4)	55 (53–56, n = 2)	50 (n = 2)	60 (55–63, n = 15)
Ventral Anchor Inner Length	-	-	55 (53–57, n = 3)	55 (54–55, n = 2)	53 (52–53, n = 2)	58 (53–62, n = 15)
Dorsal Anchor Outer Length	34–52	49 (44–53, n = 16)	50 (50–51, n = 4)	49 (43–59, n = 3)	45 (n = 2)	50 (47–53, n = 14)
Dorsal Anchor Inner Length	-	-	33 (29–37, n = 3)	29 (20–33, n = 3)	31 (30–32, n = 2)	33 (31–39, n = 14)
Ventral Bar Length	50–78	77 (72–84, n = 13)	72 (68–75, n = 2)	-	72 (64–80, n = 2)	100 (93–106, n = 8)

(Continued)

Table 2. (Continued)

Source	Santos, Buchmann & Gibson, 2000	Kritsky, Bakenhaster & Adams, 2015	Type-specimens, MNHN 249H-Tc167, 249H-Tc167 bis	Slides deposited in MNHN, HEL 465, HEL 466, HEL 470, HEL 471		MNHN HEL560, Present study
Ventral Bar Width	-	-	15 (14–15, n = 2)	-	12 (n = 2)	18 (14–20, n = 8)
Lateral (dorsal) Bar Length	50–69	67 (61–72, n = 15)	64 (63–66, n = 4)	61 (54–74, n = 4)	59 (56–63, n = 4)	90 (84–96, n = 15)
Lateral (dorsal) Bar Width	-	-	20 (18–20, n = 4)	17 (14–22, n = 4)	16 (15–18, n = 4)	22 (17–26, n = 15)

doi:10.1371/journal.pone.0159886.t002

anchors with distinct handle and guard (Fig 2E), outer length b 60 (55–63, n = 15), inner length b 58 (53–62, n = 15). Dorsal anchors with indistinct guard (Fig 2E), outer length b 50 (47–53, n = 14), inner length b 33 (31–39, n = 14). Lateral (dorsal) bars, with flattened medial end (Fig 2E), length b 90 (84–96, n = 15), maximum width b 22 (17–26, n = 15). Ventral bar (Fig 2E), length b 100 (93–106, n = 8), maximum width, b18 (14–20, n = 8). Male copulatory organ a quadriloculate organ, first (anterior) chamber almost as sclerotised as the 3 others; fourth chamber forming short cone, prolonged by thin sclerotised tube; inner length b 89 (82–100, n = 17); cone length b 11 (7–12, n = 17); tube length b 35 (29–44, n = 17); tube diameter b 4 (4–4.5, n = 16). Filament of variable length (Fig 2A and 2B).

Sclerotised vagina comprises sclerotised trumpet, primary canal, primary chamber, secondary canal and secondary chamber. Trumpet anterior, ring-shaped; primary canal with regular diameter and medium-thick wall, curved in its anterior part, sometimes looped; connection between primary canal and primary chamber posterior; primary chamber elongate, roughly parallel to primary canal but reversely oriented, its wall slightly thicker than primary canal; secondary canal well visible, often curved, its lumen thin, its wall slightly less sclerotised than chambers; secondary chamber roughly spherical, its wall thick, smaller than primary chamber; secondary chamber located just posterior to trumpet, often at the level of curve of primary canal (Fig 1A–1J). Total length of sclerotised vagina b 50 (45–54, n = 17). External diameter of primary chamber b 9 (7–10, n = 17).

Comments. *Pseudorhabdosynochus beverleyburtonae* was originally described by Oliver as *Cycloplectanum beverleyburtonae*, from *M. marginata* (as *Epinephelus guaza*) in the Western Mediterranean Sea off France [10]. Kritsky & Beverley-Burton (1986) regarded *Cycloplectanum* Oliver, 1968 a junior synonym of *Pseudorhabdosynochus* Yamaguti, 1958 and placed several species, including *C. beverleyburtonae*, in the latter genus [28]. Most subsequent authors have accepted *Pseudorhabdosynochus* as the valid genus; however, Oliver continued to designate the species as *C. beverleyburtonae* [25].

Pseudorhabdosynochus beverleyburtonae parasitises *M. marginata*, which is a trans-Atlantic grouper fish. The original description does not include any measurements [10]. Measurements in specimens from various origins show differences (Table 2) but these should be attributed to various methods of fixation and degree of flattening, as is usual in diplectanids [20]. The morphology of the sclerotised vagina is similar in all specimens, including our newly examined specimens from Tunisia. We conclude, as previous authors [2, 11], that the populations assigned to *M. marginata* from the Mediterranean Sea and both sides of the Atlantic Ocean are conspecific. Tunisia is a new geographical record for the species, and is the first record on the southern shore of the Mediterranean Sea.

Differential diagnosis. *Pseudorhabdosynochus beverleyburtonae* is close to *P. oliveri* n. sp., *P. sosia* and *P. hayet* n. sp. in terms of general morphology of body, presence of two circular innermost rows of rodlets in squamodiscs and general morphology of the sclerotised vagina. It

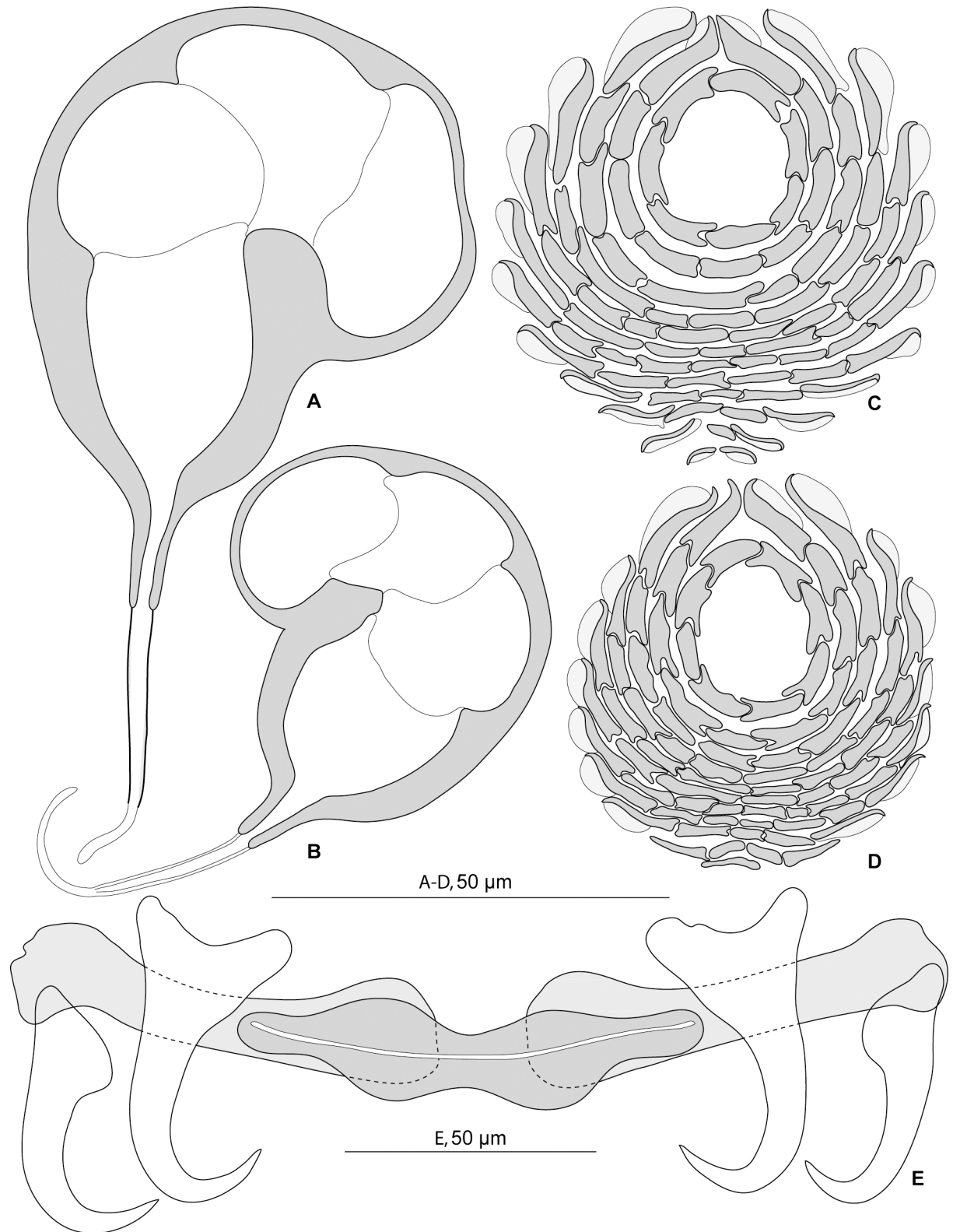


Fig 2. *Pseudorhabdosynochus beverleyburtonae* from *Mycteroperca marginata* in the Mediterranean Sea and Atlantic Ocean, quadriloculate organ, squamodiscs and haptoral hard parts. A, quadriloculate organ, MNHN 249H-Tc167, type-specimen. B, quadriloculate organ, voucher MNHN HEL466. C, ventral squamodisc, D, dorsal squamodisc, MNHN 249H-Tc167 bis, type-specimen. E, haptoral hard parts, new specimen from Tunisia. A, C, D, carmine. B, Gray and Wess medium. E, Berlese.

doi:10.1371/journal.pone.0159886.g002

is separated from *P. oliveri*, which also occurs on *M. marginata*, by the shape of its primary canal (narrow in *P. beverleyburtonae* vs. wide in *P. oliveri*), and from *P. sosia* and *P. hayet* by the shape of its primary chamber, wider and more sclerotised in the two latter species.

Pseudorhabdosynochus oliveri n. sp.

urn:lsid:zoobank.org:act:8BDBF329-0700-44A1-B720-6C172ECE0701

Type-host: *Mycteroperca marginata* (Lowe) (Perciformes, Epinephelidae)

Site of infection: Gills

Type-locality: Off Cap Béar, Mediterranean Sea, France; date 4 February 1965.

Material examined: 4 voucher specimens MNHN HEL68 OLI 8–1 to 8–4 on slides, labelled as *Cycloplectanum beverleyburtonae* by Guy Oliver.

Holotype: MNHN HEL68 OLI 8–2

Paratypes: MNHN HEL68 OLI 8–1, HEL68 OLI 8–3, HEL68 OLI 8–4

Etymology: This species is named for Guy Oliver, French parasitologist, in recognition of his research on fish monogeneans.

Description (Figs 3 and 4). Measurements of 4 specimens in carmine. Body length h 1100, c 1050 (1000–1100, n = 2), including haptor; maximum width h 250, c 235 (220–250, n = 2) at level of ovary (Fig 3A). Tegument smooth. Anterior region with 3 pairs of head organs and 2 pairs of dorsal eye-spots, distance between outer margins of anterior eye-spots h 50, c 42 (35–50, n = 3), of posterior eye-spots h 40, c 36 (30–40, n = 3). Pharynx median, ovate, length c 56 (50–62, n = 2), width c 59 (56–62, n = 2). Oesophagus very short or absent. Two simple lateral intestinal caeca not united posteriorly. Haptor bearing 2 squamodiscs, 2 pairs of lateral anchors, 1 ventral bar and 2 lateral (dorsal) bars, and 14 marginal hooklets. Squamodiscs with 10–11 concentric rows of rodlets; the 2 innermost rows form circles. Rodlets with visible spurs ('éperons') (Fig 3H). Squamodisc length c 72 (n = 2), width c 85 (81–88, n = 2). Ventral anchors with distinct handle and guard (Fig 3E), outer length h 70, c 72 (67–82, n = 8), inner length h 73, c 73 (70–78, n = 8). Dorsal anchors with indistinct guard (Fig 3G), outer length c 66 (63–73, n = 6), inner length c 47 (43–50, n = 5). Lateral (dorsal) bars, with flattened medial end (Fig 3F), length h 85, c 87 (84–91, n = 8), maximum width h 24, c 24 (23–25, n = 8). Ventral bar with constricted median portion (Fig 3D), length h 104, c 102 (97–105, n = 4), maximum width, h 20, c 20 (16–22, n = 4). Testis subspherical, posterior, intercaecal. Male copulatory organ a quadriloculate organ, first (anterior) chamber as sclerotised as the 3 others; fourth chamber forming short cone, prolonged by thin sclerotised tube. Inner length c 133 (128–138, n = 2); cone length c 9 (8–10, n = 2); tube length c 35 (33–36, n = 2); tube diameter c 6 (5–6, n = 2). Filament not seen (Fig 3B).

Vitelline follicles lateral, coextensive with intestinal caeca and contiguous posterior to testis. Ovary on right side, looping dorsoventrally around right intestinal caecum.

Sclerotised vagina comprises sclerotised trumpet, primary canal, primary chamber, secondary canal and secondary chamber. Trumpet in anterior part; primary canal with thick wall, curved in its anterior part, enlarged in its posterior part with wide lumen; connection between primary canal and primary chamber posterior; primary chamber elongate, roughly parallel to primary canal but reversely oriented, its wall the same thickness as primary canal; secondary canal short, its lumen thin; secondary chamber located just posterior to trumpet, roughly spherical, its wall thick, smaller than primary chamber (Figs 3C and 4A–4C). Total length of sclerotised vagina c 63 (59–65, n = 4). Diameter of primary canal h 11, c 14 (11–16, n = 4).

Comments. This new species was found among voucher specimens labelled as *Cycloplectanum beverleyburtonae* by Guy Oliver (now *P. beverleyburtonae*). These specimens were deposited by Guy Oliver in the MNHN collections after his retirement and were not mentioned

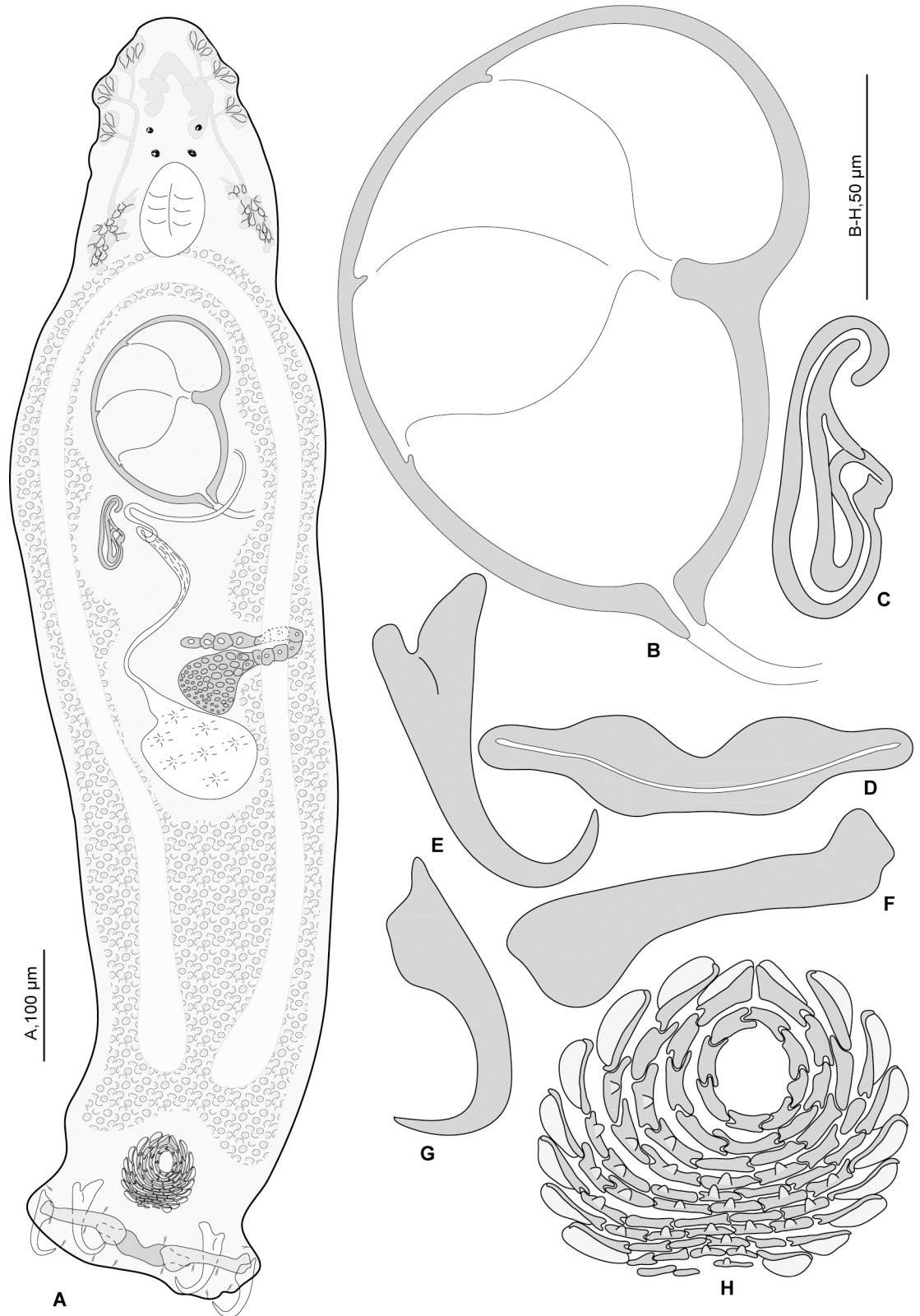


Fig 3. *Pseudorhabdosynochus oliveri* n. sp. from *Mycteroperca marginata* off France. A, composite, dorsal view. B, male quadriloculate organ. C, vagina. D, ventral bar. E, ventral anchor. F, lateral (dorsal) bar. G, dorsal anchor. H, dorsal squamodisc. All in carmine.

doi:10.1371/journal.pone.0159886.g003

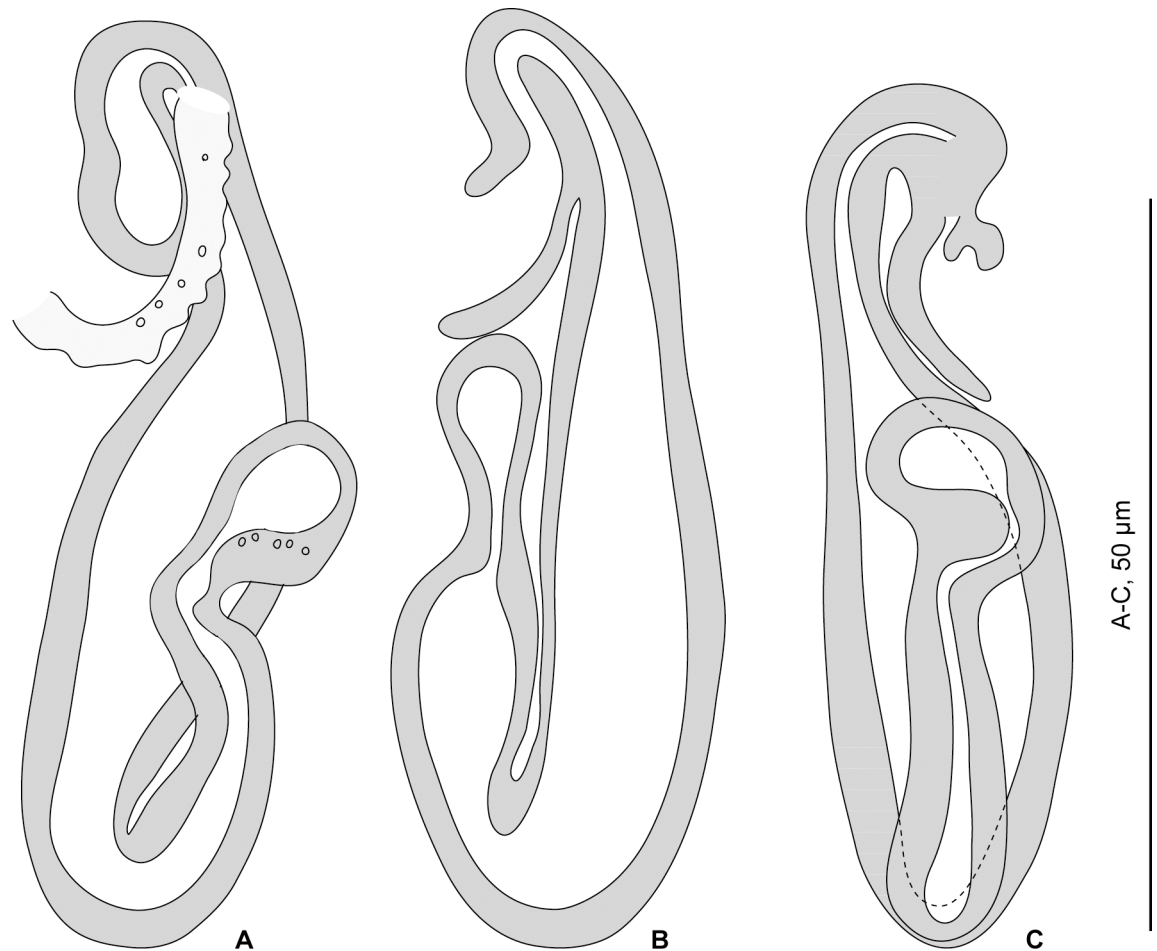


Fig 4. *Pseudorhabdosynochus oliveri* n. sp. from *Mycteroperca marginata* off France, different shapes of sclerotised vagina according to specimens and orientation. A, MNHN HEL68 OLI 8–1. B, MNHN HEL68 OLI 8–3. C, MNHN HEL68 OLI 8–4. All in carmine.

doi:10.1371/journal.pone.0159886.g004

in the original description. This is not the first time that new species of *Pseudorhabdosynochus* are found among museum specimens labelled as other species; previous cases include *P. satyui* Justine, 2009, found among specimens of *P. epinepheli* Yamaguti, 1958 [29], *P. williamsi* Kritsky et al., 2015 found among specimens of *P. monaensis* Dyer et al., 1994, and *P. justinella* Kritsky et al., 2015 found among specimens of *P. yucatanensis* Vidal-Martinez et al., 1997. In the latter case, Kritsky et al. (2015) demonstrated that the original description of *P. yucatanensis* [30] contained drawings of specimens from both species; in the case of the *P. beverleyburtonae*/*P. oliveri* couple, we did not find any indication of *P. oliveri* being included in the original description of *P. beverleyburtonae*.

Although *P. oliveri* and *P. beverleyburtonae* apparently co-occurred on dusky groupers from off France examined by Oliver, we did not find the former in our fish specimen from Tunisia.

Differential diagnosis. *Pseudorhabdosynochus oliveri* is close to *P. beverleyburtonae*, *P. sosia* and *P. hayet* n. sp. in terms of general morphology of body, presence of two circular innermost rows of rodlets in squamodiscs and general morphology of the sclerotised vagina. It is separated from the three others by the development of its primary canal, which is wide, vs. thin, and the small primary chamber, vs. large in the other three species.

Pseudorhabdosynochus sosia Neifar & Euzet, 2007

Type-host: Goldblotch grouper, *Mycteroperca costae* (Steindachner) (Perciformes, Epinephelidae); synonyms: *Epinephelus alexandrinus* (Valenciennes), *Epinephelus costae*.

Molecular identification of fish via DNA barcoding: Four specimens from Tunisia were sequenced (Table 1), including three new and one already sequenced as KT805240 [31]. All sequences had 99–100% similarity with sequences already identified as *M. costae* in GenBank, confirming the morphological identification of the host.

Site of infection: Gills

Type-locality: Off Sfax, Tunisia.

Other localities: Off Zarzis (Tunisia) [3]; off Dakar (Senegal) [3]; Tripoli (fish market), Libya (present study).

Material examined: Holotype, MNHN HEL11-Th84 (darkened picrate slide); paratypes, MNHN HEL12-Th85, MNHN HEL13-Th86 (paratype specimens marked on slides); voucher specimens collected by Neifar and Euzet (MNHN HEL561) from off Tunisia; new specimens collected from off Tunisia (MNHN HEL562) (Table 3).

Prevalence: In our specimens from Tunisia, 4/4 (100%); from Libya, 1/1 (100%).

Molecular characterisation: COI sequences were obtained for 4 specimens from Tunisia (Table 1).

Redescription (Fig 5). Measurements of 30 specimens in Berlese. Body length b 1,039 (800–1,200, n = 12), including haptor; maximum width b 219 (150–330, n = 11) at level of ovary. Tegument smooth. Anterior region with 3 pairs of head organs and 2 pairs of dorsal eye-spots, distance between outer margins of anterior eye-spots b 39 (27–63, n = 22), of posterior eye-spots b 30 (15–38, n = 26). Pharynx median, subspherical. Oesophagus very short or absent. Two simple lateral intestinal caeca not united posteriorly. Haptor bearing 2 squamodiscs, 2 pairs of lateral anchors, 1 ventral bar and 2 lateral (dorsal) bars and 14 marginal hooklets; width b 198 (180–210, n = 4). Squamodiscs with 10–12 concentric rows of rodlets; 2 innermost rows forming circles. Rodlets with visible spurs ('éperons') (Fig 5A and 5B). Squamodisc length b 63 (52–80, n = 23), width b 62 (53–73, n = 23). Ventral anchors with distinct handle and guard (Fig 5C), outer length b 48 ± 3 (42–53, n = 33), inner length b 47 ± 5.2 (40–74, n = 35). Dorsal anchors with indistinct guard (Fig 5C), outer length b 40 ± 2.1 (33–43, n = 38), inner length b 25 ± 2.4 (21–32, n = 36). Lateral (dorsal) bars with wide flattened medial extremity and cylindrical lateral extremity (Fig 5C), length b 72 ± 4.7 (60–80, n = 40), width b 21 ± 1.9 (17–25, n = 40). Ventral bar (Fig 5C), length b 88 (68–100, n = 20), width b 16 (13–20, n = 20). Testis subspherical, posterior, intercaecal. Male copulatory organ a quadriloculate organ, length b 92 (63–120, n = 23); divided into four chambers, fourth chamber more sclerotised than 3 anterior chambers; fourth chamber ends in short sclerotised cone, length b 8 (5–10, n = 26), prolonged by sclerotised tube, length b 30 (24–39, n = 27), diameter b 3 (3–4, n = 27); end of tube prolonged by thin unsclerotised filament, length b 28 (20–33, n = 3) (Fig 5D).

Sclerotised vagina comprises sclerotised trumpet, primary canal, primary chamber, secondary canal and secondary chamber. Trumpet anterior, ring-shaped; primary canal with regular diameter and medium-thick wall, curved or S-shaped; connection between primary canal and primary chamber posterior; primary chamber ovoid or pear-shaped, roughly parallel to primary canal but reversely oriented, its wall thick; secondary canal well visible, its lumen thin, its wall less sclerotised than chambers; secondary chamber spherical, its wall thick, smaller than primary chamber; secondary chamber located just posterior to trumpet (Fig 5E–5H). Sclerotised vagina length b 44 ± 4.3 (35–58, n = 30), external diameter of primary chamber b 15 (11–17, n = 28).

Table 3. Measurements of *P. sosia* and *P. hayet* n. sp.

Species	<i>P. sosia</i> Neifar & Euzet, 2007				<i>P. hayet</i> n. sp.		
Hosts	<i>M. costae</i>				<i>M. rubra</i>		
Source	Neifar and Euzet, 2007	Paratypes, MNHN HEL12-Th 85, MNHN HEL13-Th 86	MNHN HEL561, Vouchers collected by Neifar & Euzet	MNHN HEL562, Vouchers, newly collected specimens	MNHN HEL563-564, Specimens collected by Neifar & Euzet	MNHN HEL565, Specimens collected by Neifar	MNHN 306HG, Specimens from Euzet collection
Locality	Off Sfax, Tunisia	Off Sfax, Tunisia	Off Sfax and Zarzis, Tunisia	Off Sfax, Tunisia	Off Dakar, Senegal	Off Sfax, Tunisia	Off Dakar, Senegal
Methods	Picrate-glycerine, carmine, Berlese	Picrate-glycerine	Picrate-glycerine	Berlese	Carmine	Picrate-glycerine	Berlese
n	34	9	19	30	4	3	5
Body Length	1,100 (800–1,300, n = 24)	398 (347–438, n = 9)	733 (550–950, n = 17)	1,039 (800–1,200, n = 12)	795 (710–920, n = 4)	970 (830–1,110, n = 2)	1,150 (1,100–1,200, n = 2)
Body Width	270 (170–350, n = 24)	79 (75–91, n = 9)	150 (120–180, n = 16)	219 (150–330, n = 11)	215 (180–260, n = 4)	180 (130–230, n = 2)	245 (240–250, n = 2)
Haptor Width	-	85 (75–98, n = 9)	147 (130–166, n = 13)	198 (180–210, n = 4)	165 (140–180, n = 4)	-	-
Pharynx Length	66 (50–80, n = 14)	28 (18–42, n = 9)	38 (25–50, n = 18)	-	46 (42–48, n = 4)	-	-
Pharynx Width	57 (40–70, n = 14)	24 (18–30, n = 9)	34 (25–40, n = 18)	-	49 (45–52, n = 4)	-	-
Penis Internal Length	110±3 (90–130, n = 29)	84 (75–91, n = 8)	81 (65–94, n = 15)	92 (63–120, n = 23)	85 (83–92, n = 4)	89 (86–94, n = 3)	150 (140–165, n = 5)
Penis Cone Length	13±1 (10–17, n = 29)	11 (8–15, n = 8)	8 (6–10, n = 14)	8 (5–10, n = 26)	7 (5–9, n = 4)	7 (6–7, n = 2)	10 (n = 5)
Penis Tube Length	38±2 (25–45, n = 29)	29 (24–42, n = 6)	23 (10–27, n = 9)	30 (24–39, n = 27)	18 (15–20, n = 2)	-	26 (5–33, n = 5)
Penis Tube Diameter	-	4 (4–4, n = 8)	4 (3–4, n = 13)	3 (3–4, n = 27)	4 (3–5, n = 4)	4 (n = 2)	5 (4–5, n = 3)
Penis Filament Length	-	-	-	28 (20–33, n = 3)	30 (n = 2)	-	-
Sclerotised Vagina Total Length	48±1 (40–55, n = 34)	35 (32–38, n = 9)	36 (26–40, n = 19)	44±4.3 (35–58, n = 30)	46 (45–49, n = 4)	43 (40–45, n = 3)	61 (54–70, n = 5)
Primary Chamber External Diameter	-	12 (11–14, n = 9)	13 (10–15, n = 19)	15 (11–17, n = 28)	10 (n = 4)	9 (7–12, n = 3)	15 (14–16, n = 5)
Squamodisc Length	-	46 (44–49, n = 7)	51 (40–62, n = 15)	63 (52–80, n = 23)	53 (40–62, n = 8)	49 (48–50, n = 2)	-
Squamodisc Width	67 (60–80, n = 12)	44 (39–45, n = 7)	45 (29–51, n = 14)	62 (53–73, n = 23)	52 (38–58, n = 8)	63 (62–63, n = 2)	-
Squamodisc, Number of Rows	10–11	11 (10–11, n = 5)	-	11 (10–12, n = 22)	10 (10–11, n = 4)	10 (n = 1)	-
Squamodisc, Number of Closed Rows	1–2	2 (n = 5)	2 (n = 11)	2 (n = 22)	2 (n = 2)	-	-
Ventral Anchor Outer Length	60±1 (55–67, n = 34)	41 (36–45, n = 14)	44 (41–48, n = 27)	48±3 (42–53, n = 33)	49 (45–52, n = 2)	46 (43–48, n = 4)	51 (48–55, n = 8)
Ventral Anchor Inner Length	-	41 (39–45, n = 13)	44 (38–50, n = 28)	47±5.2 (40–74, n = 35)	48 (45–50, n = 6)	45 (40–48, n = 4)	48 (38–52, n = 8)
Dorsal Anchor Outer Length	52 (50–57, n = 28)	37 (33–41, n = 15)	38±2 (35–41, n = 29)	40±2.1 (3–43, n = 38)	40 (38–42, n = 7)	42 (40–43, n = 4)	43 (41–45, n = 7)

(Continued)

Table 3. (Continued)

Species	<i>P. sosia</i> Neifar & Euzet, 2007				<i>P. hayet</i> n. sp.		
	<i>M. costae</i>				<i>M. rubra</i>		
Dorsal Anchor Inner Length	-	24 (23–27, n = 13)	24±1.4 (22–28, n = 29)	25±2.4 (21–32, n = 36)	25 (24–26, n = 7)	24 (23–26, n = 4)	26 (25–30, n = 7)
Ventral Bar Length	83±3 (70–105, n = 34)	70 (57–128, n = 7)	61 (55–73, n = 15)	88 (68–100, n = 20)	69 (63–73, n = 4)	77 (68–86, n = 2)	93 (85–100, n = 3)
Ventral Bar Width	12±1 (7–17, n = 34)	8 (7–10, n = 7)	10 (7–13, n = 15)	16 (13–20, n = 20)	13 (n = 4)	11 (n = 2)	18 (17–20, n = 3)
Lateral Bar Length	66±2 (58–73, n = 36)	47 (45–49, n = 18)	50±4.2 (42–63, n = 33)	72±4.7 (60–80, n = 40)	53 (47–55, n = 8)	54 (53–56, n = 4)	75 (72–78, n = 8)
Lateral Bar Width	14±2 (12–22, n = 36)	12 (9–15, n = 18)	13±1 (10–15, n = 33)	21±1.9 (17–25, n = 40)	16 (13–18, n = 8)	15 (14–16, n = 4)	26 (17–30, n = 8)

Bold: important differences for species differentiation.

doi:10.1371/journal.pone.0159886.t003

Differential diagnosis. By the morphology of its sclerotised vagina, *P. sosia* is close to *P. beverleyburtonae*, *P. oliveri* n. sp. and *P. hayet* n. sp. Indeed, Neifar & Euzet named the species for its resemblance with *P. beverleyburtonae* [3]. *Pseudorhabdosynochus sosia* and *P. beverleyburtonae* have similar vaginal lengths but can be differentiated, as indicated by Neifar & Euzet, 2007, by the external diameter of the primary chamber (larger in *P. sosia*) and its shape (pear-shaped in *P. sosia* vs elongated in *P. beverleyburtonae*), and by the shape and length of the primary canal (longer and more coiled in *P. beverleyburtonae*). *Pseudorhabdosynochus sosia* is readily distinguished from *P. oliveri* by the shape of its primary canal (thin vs. wide in the latter).

The morphology of the vagina is very similar in *P. sosia* and *P. hayet*, but *P. sosia* differs by smaller male copulatory organ (see details under *P. hayet*, and Table 3), different host (*M. costae* for *P. sosia* vs *M. rubra* for *P. hayet*) (Table 1), and divergent COI sequences (Table 4).

Pseudorhabdosynochus hayet n. sp.

urn:lsid:zoobank.org:act:10C2CE08-E772-4817-A4BC-EF7CF91ED44A

Synonym: *Pseudorhabdosynochus* sp. of Chaabane et al., 2015 (Table 1 in [6])

Type-host: Mottled grouper *Mycteroperca rubra* (Bloch) (Perciformes, Epinephelidae)

Molecular identification of fish via DNA barcoding: Two fish were sequenced, one from Libya (new sequence KX255748) and one from Tunisia (sequence already published as KU739518 [24] (Table 1)). The sequences were similar (99% identity) to sequences of the same fish species, therefore confirming the identity of the host fish.

Site of infection: Gills.

Type-locality: Off Dakar, Senegal.

Other localities: Sfax and Tunis (fish markets), Tunisia (present study)

Material examined: Specimens off Sfax and Dakar (Table 3).

Specimens deposited: Holotype, MNHN HEL563 (carmine), from off Senegal, material collected by Neifar & Euzet, precise date unknown (2002–2004); paratypes MNHN HEL564 from off Senegal (carmine), material collected by Neifar & Euzet, precise date unknown (2002–2004); paratypes MNHN 306HG from off Senegal (Berlese), material collected by Neifar & Euzet (2004) in Euzet’s collection; paratypes MNHN HEL565 from off Tunisia collected by Neifar (picrate). The holotype was chosen among carmine slides because slides in Canada balsam are permanent. One specimen collected off Tunis, Tunisia, used for molecular analysis and destroyed.

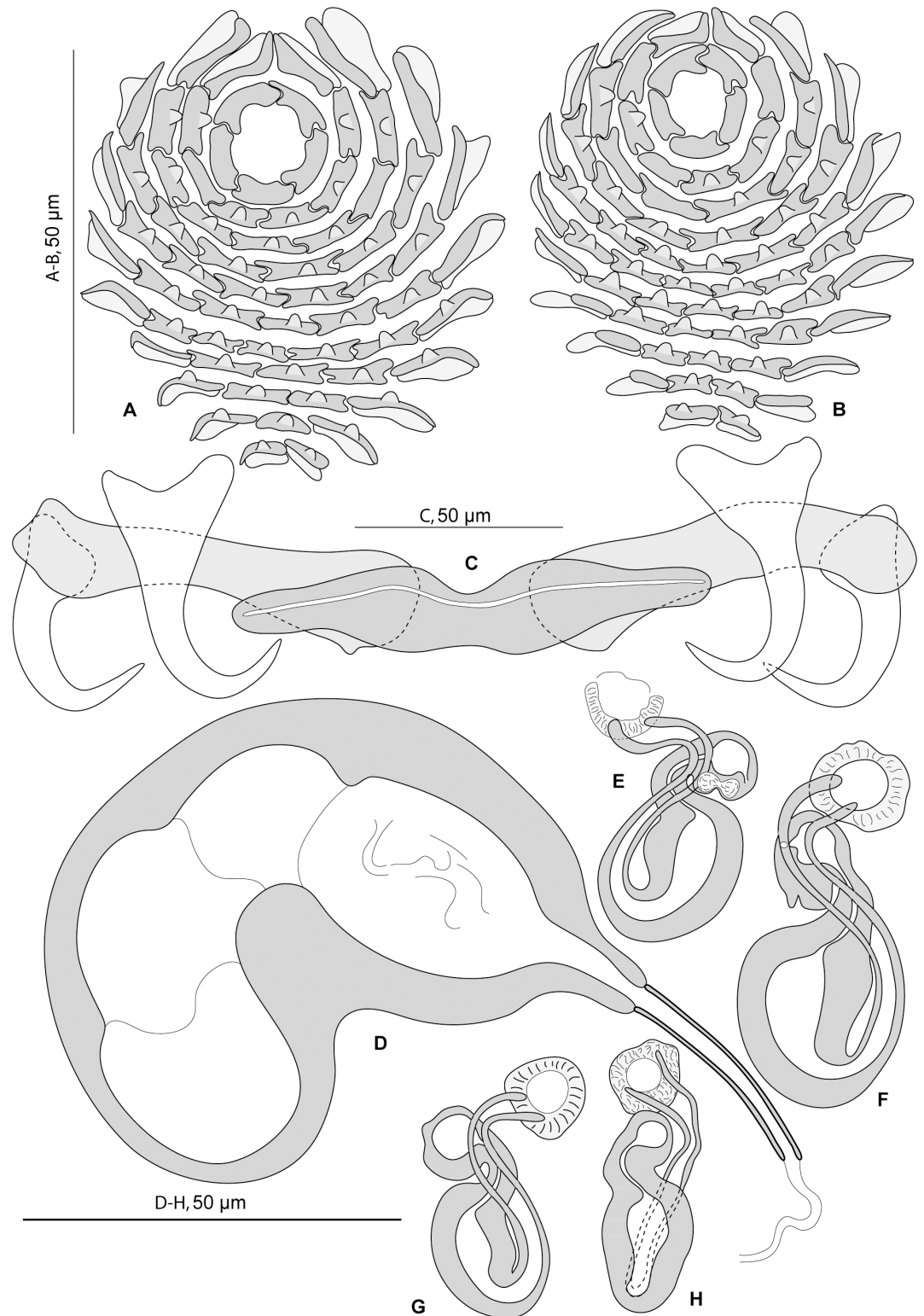


Fig 5. *Pseudorhabdosynochus sosia* from *Mycteroperca costae* in the Mediterranean Sea and Eastern Atlantic Ocean, sclerotised parts. A, ventral squamodisc. B, dorsal squamodisc. C, haptor hard parts. D, quadriloculate organ. E, F, vaginae. A-F, newly collected specimens from Tunisia, MNHN HEL562. G, H, vaginae, voucher specimens MNHN HEL561 from Tunisia. A-F, Berlese. G, H, picrate-glycerine.

doi:10.1371/journal.pone.0159886.g005

Table 4. Estimates of evolutionary divergence between COI sequences of *Pseudorhabdosynochus* spp.

Species	Accession number	[1]	[2]	[3]	[4]	[5]	[6]	[7]	[8]
<i>Pseudorhabdosynochus hayet</i> n. sp	KX255746	[1]							
<i>Pseudorhabdosynochus sosia</i>	KX255744	[2]	0.13						
<i>Pseudorhabdosynochus sosia</i>	KX255743	[3]	0.14	0.00					
<i>Pseudorhabdosynochus sosia</i>	KX255741	[4]	0.14	0.00	0.00				
<i>Pseudorhabdosynochus sosia</i>	KX255742	[5]	0.13	0.00	0.00	0.00			
<i>Pseudorhabdosynochus regius</i>	KX255745	[6]	0.26	0.21	0.21	0.21	0.21		
<i>Pseudorhabdosynochus sulamericanus</i>	KT023569	[7]	0.21	0.19	0.20	0.20	0.19	0.22	
<i>Pseudorhabdosynochus cyanopodus</i>	JQ400135	[8]	0.26	0.20	0.20	0.20	0.20	0.23	0.19
<i>Lamellodiscus ignoratus</i>	JF427655	[9]	0.39	0.34	0.34	0.34	0.34	0.31	0.38

The analysis involved 9 nucleotide sequences, and there were a total of 290 positions in the final dataset. Bold: differences between *P. hayet* n. sp. and *P. sosia*.

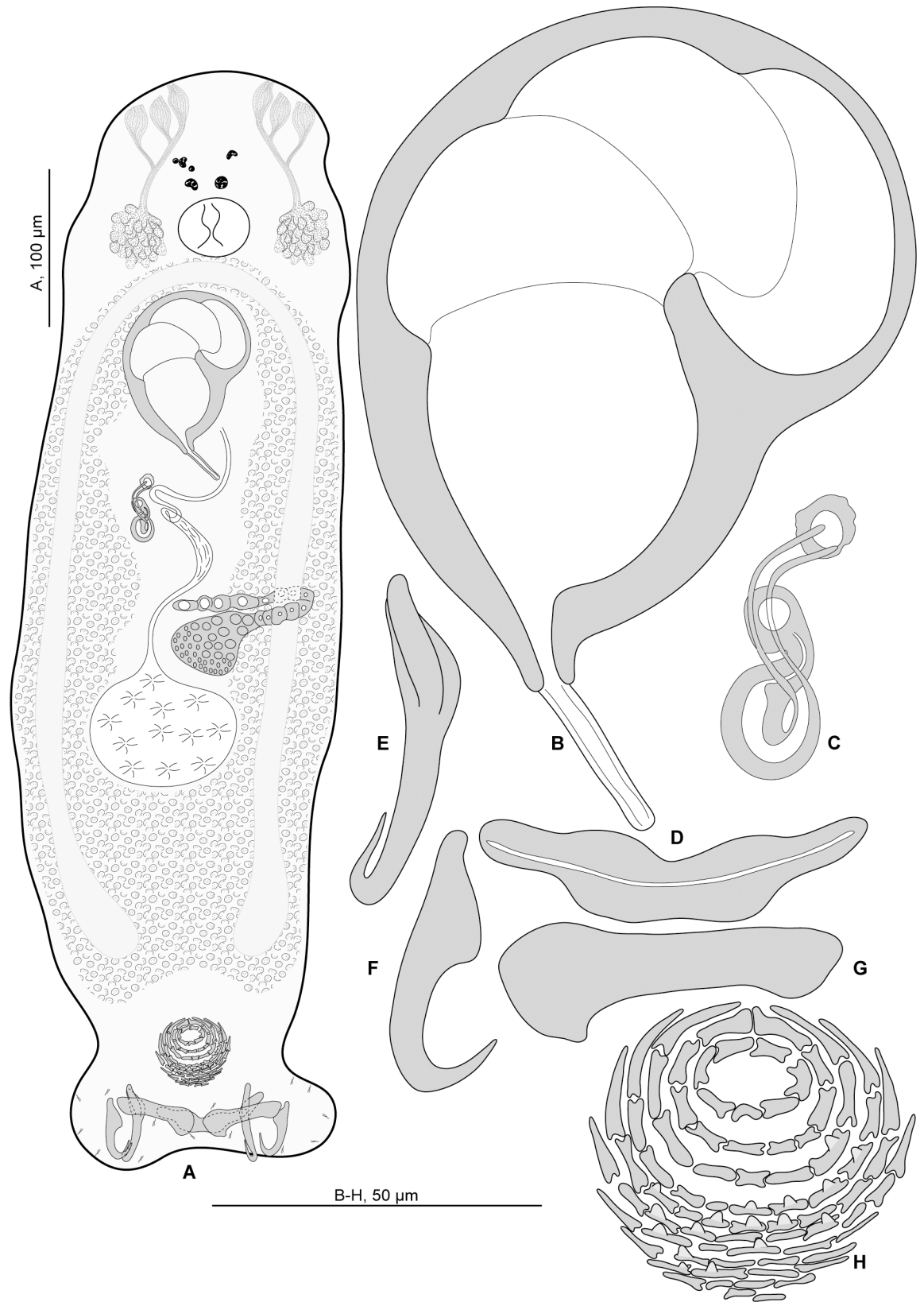
doi:10.1371/journal.pone.0159886.t004

Prevalence: In Tunisia, 1/1, in Libya, 0/1.

Molecular characterisation: A COI sequence was obtained for a specimen from off Tunis, Tunisia (Table 1).

Etymology: The specific name, *hayet*, is from Arabic (حَيَّة). The species is named after the mother of the first author. Name in apposition, invariable.

Description (Figs 6 and 7). Measurements based on 12 specimens in picrate, Berlese and carmine; holotype in carmine. Body length h 730, c 795 (710–920, n = 4), p 970 (830–1,110, n = 2), b 1,150 (1,100–1,200, n = 2) including haptor; maximum width h 200, c 215 (180–260, n = 4), b 245 (240–250, n = 2), at level of ovary (Fig 6A). Tegument smooth. Anterior region with 3 pairs of head organs and 2 pairs of dorsal eye-spots, distance between outer margins of anterior eye-spots h 42, c 39 (32–43, n = 4), b 51 (30–62, n = 3), of posterior eye-spots h 28, c 28 (28–29, n = 4), b 32 (20–40, n = 3). Pharynx median, subspherical length h 42, c 46 (42–48, n = 4), width c 49 (45–52, n = 4). Oesophagus very short or absent. Two simple lateral intestinal caeca not united posteriorly. Haptor bearing 2 squamodiscs, 2 pairs of lateral anchors, 1 ventral bar and 2 lateral (dorsal) bars and 14 marginal hooklets; width h 170, c 165 (140–180, n = 4). Squamodiscs with 10–11 concentric rows of rodlets; 2 innermost rows forming circle. Rodlets with visible spurs (‘éperons’) (Fig 6H). Squamodisc length h 50, p 49 (48–50, n = 2), c 53 (40–62, n = 8), width h 51, p 63 (62–63, n = 2), c 52 (38–58, n = 8). Ventral anchors with distinct handle and guard (Fig 6E), outer length c 49 (45–52, n = 2), p 46 (43–48, n = 4), b 51 (48–55, n = 8), inner length h 46, c 48 (45–50, n = 6), p 45 (40–48, n = 4), b 48 (38–52, n = 8). Dorsal anchors with indistinct guard (Fig 6F), outer length h 39, c 40 (38–42, n = 7), p 42 (40–43, n = 4), b 43 (41–45, n = 7), inner length h 26, c 25 (24–26, n = 7), p 24 (23–26, n = 4), b 26 (25–30, n = 7). Lateral (dorsal) bars with wide flattened medial extremity and cylindrical lateral extremity (Fig 6G), length h 55, c 53 (47–55, n = 8), p 54 (53–56, n = 4), b 75 (72–78, n = 8), width h 18, c 16 (1–18, n = 8), p 15 (14–16, n = 4), b 26 (17–30, n = 8). Ventral bar with blunt extremities (Fig 6D), length h 73, c 69 (63–73, n = 4), b 93 (85–100, n = 3), width h 13, c 13 (n = 4), b 18 (17–20, n = 3). Testis subspherical, posterior, intercaecal. Male copulatory organ a quadriloculate organ, length h 92, c 85 (83–92, n = 4), p 89 (86–94, n = 3), b 150 (140–165, n = 5); divided into four chambers, fourth (posterior) chamber more sclerotised than 3 anterior chambers, finishes with short sclerotised cone, cone length h 7, c 7 (5–9, n = 4), p 7 (6–7, n = 2), b 10 (n = 5) prolonged by sclerotised tube, tube length c 18 (15–20, n = 2), b 26 (5–33, n = 5), tube diameter h 4.5, c 4 (3–5, n = 4), p 4 (n = 2), b 5 (4–5, n = 3); end of tube sometimes prolonged by thin unsclerotised filament, length c 30 (n = 2) (Fig 6B). Ovary subequatorial,



B-H, 50 μm

Fig 6. *Pseudorhabdosynochus hayet* n. sp. from *Mycteroperca rubra* off Senegal. A, holotype, dorsal view. B, male quadriloculate organ. C, vagina. D, ventral bar. E, ventral anchor. F, dorsal anchor. G, lateral (dorsal) bar. H, ventral squamodisc. All in carmine.

doi:10.1371/journal.pone.0159886.g006

intercaecal, pre-testicular, encircles right caecum. Vitelline follicles present from pre-pharynx level to haptoral peduncle.

Sclerotised vagina comprises sclerotised trumpet, primary canal, primary chamber, secondary canal and secondary chamber. Trumpet anterior, ring-shaped; primary canal with regular diameter and medium-thick wall, curved or S-shaped; connection between primary canal and primary chamber posterior; primary chamber pear-shaped or elongate, roughly parallel to primary canal but reversely oriented, its wall thick; secondary canal well visible, its lumen narrow; secondary chamber spherical, smaller than primary chamber; wall of secondary chamber thick; secondary chamber located just posterior to trumpet (Figs 6C and 7A–7D). Sclerotised vagina length h 45, c 46 (45–49, n = 4), p 43 (40–45, n = 3), b 61 (54–70, n = 5), diameter of primary chamber external h 10, c 10 (n = 4), p 9 (7–12, n = 3), b 15 (14–16, n = 5).

Differential diagnosis. *Pseudorhabdosynochus hayet* n. sp. can be distinguished from *P. oliveri* n. sp. by the shape of its primary canal (thin vs. wide in the latter), and from *P. beverley-burtonae* by the shape of its primary chamber (wide vs. thin in the latter). The morphology of the sclerotised vagina and other organs is very similar to that of *P. sosia*. The two species can, however, be distinguished by larger dimensions of the vagina in *P. hayet*. It is well known that measurements of sclerotised parts change with degree of flattening, i.e. the method for preparing slides [20]. Measurements between the two species are different when compared between specimens prepared with the same methods (Table 2): picrate (43 in *P. hayet* vs 35–36 in *P. sosia*) and Berlese (61 vs 44). The male copulatory organ is longer in *P. hayet*: picrate (89 vs 81–84 in *P. sosia*), and Berlese (150 vs 92). In addition, the hosts are different (*M. rubra* for *P. hayet* vs *M. costae* for *P. sosia*) (Table 1). The COI sequences are divergent (Table 4).

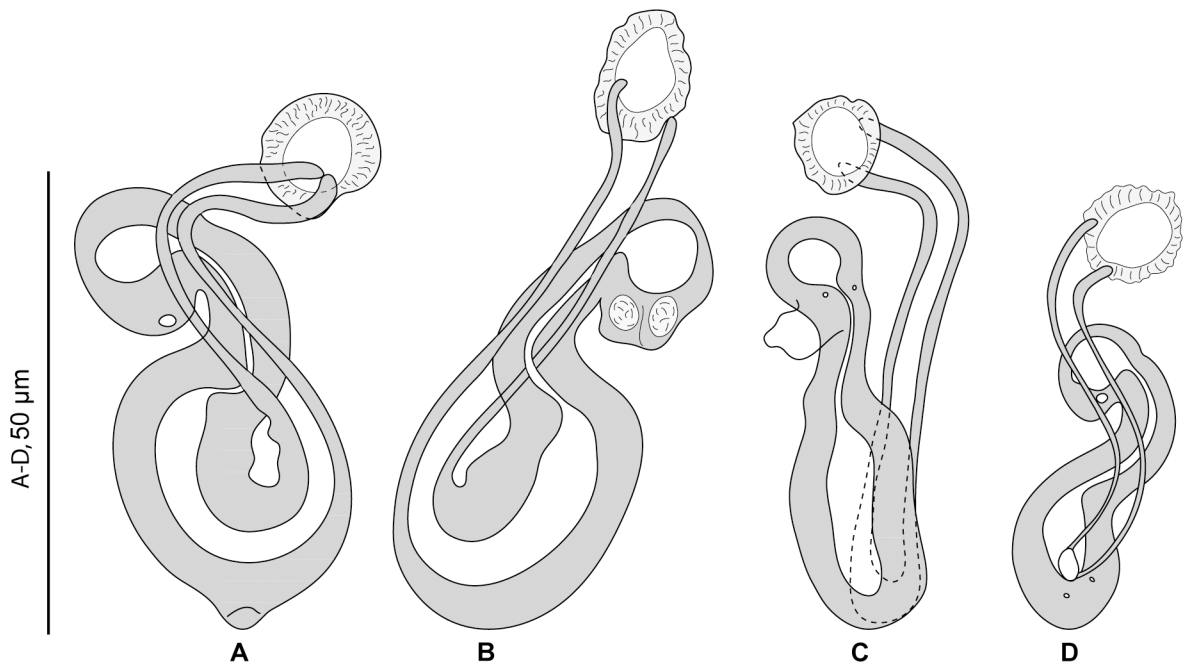


Fig 7. *Pseudorhabdosynochus hayet* n. sp. from *Mycteroperca rubra*, various shapes of sclerotised vagina according to specimens, orientation and preparation. A–D, different forms of vagina. A–C, Berlese. D, carmine.

doi:10.1371/journal.pone.0159886.g007

The ‘beverleyburtonae group’

The four species assigned to *Pseudorhabdosynochus* described and/or redescribed herein, namely *P. beverleyburtonae* and *P. oliveri* n. sp. from *M. marginata*, *P. sosia* from *M. costae*, and *P. hayet* n. sp. from *M. rubra*, exhibit great similarity in the morphology of the sclerotised vagina, the main character on which *Pseudorhabdosynochus* species are distinguished [3, 4, 6, 32, 33]. Fig 8 shows a comparison of the sclerotised vagina in all four species; colours were used to show the various parts of the vaginae and the homologies between different species. In addition, all these four species are characterised by a similar structure of the squamodiscs, with

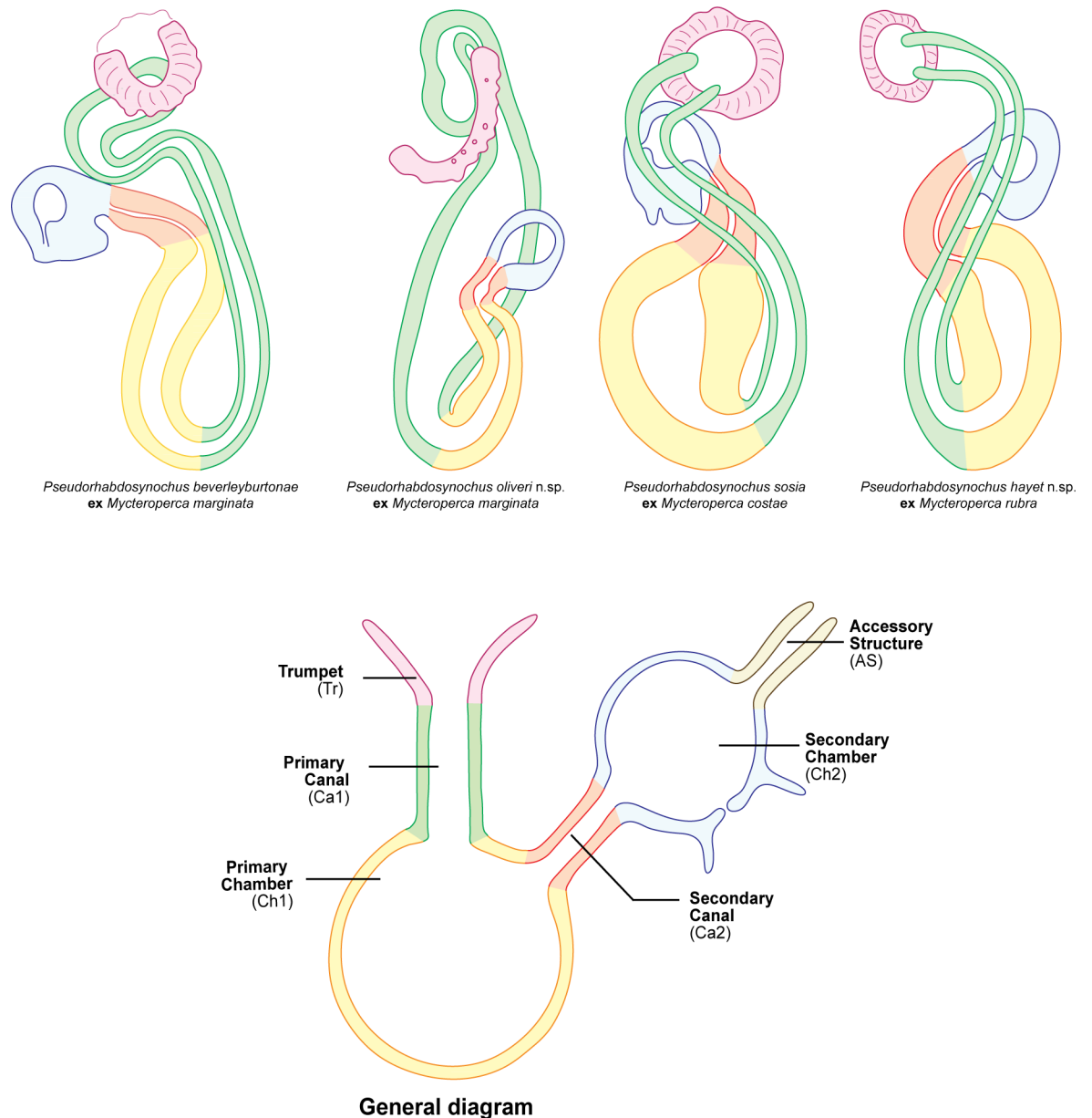


Fig 8. Homologies of the various parts of the sclerotised vaginae illustrated by coloured diagrams. The same colours are used in each diagram for the same parts, to show homologies between species. The nomenclature of vaginal parts and the general diagram are from Justine (2007) [1]. All vaginae drawn with same sizes—magnifications vary.

doi:10.1371/journal.pone.0159886.g008

two innermost rows as closed circles; this character was used as a primary characteristic to erect *Cycloplectanum* Oliver, 1968, which was later considered a junior synonym of *Pseudorhabdosynochus* [9] [28]. Squamodiscs with two innermost rows as closed circles are found in many *Pseudorhabdosynochus* species and even in species now placed in other genera such as *Echinoplectanum* Justine & Euzet, 2006 and thus cannot be used for defining a genus [34].

We propose, for these four species, a group which is referred to here as the 'beverleyburtonae group'. The four species are parasitic on groupers of the genus *Mycteroperca* in the Mediterranean Sea and eastern Atlantic (with *P. beverleyburtonae* also found in the western Atlantic).

Three species of *Pseudorhabdosynochus* from groupers in the Mediterranean Sea share vaginal characters with species of the beverleyburtonae group but do not belong to it. These species are:

- *Pseudorhabdosynochus regius* Chaabane, Neifar & Justine, 2015, from *M. rubra* [6]. This species possesses the same general vaginal structure but it has a straight primary canal (vs curved or S-shaped in species of beverleyburtonae group), a less differentiated trumpet, and the primary and secondary chambers are grouped in a heavily sclerotised structure.

- *Pseudorhabdosynochus dolicolpos* Neifar & Euzet, 2007, from *M. costae* [3]. This species has a well-defined trumpet but the primary canal is extremely long and thin, the primary chamber is very small and smaller than the secondary chamber.

- *Pseudorhabdosynochus sinediscus* Neifar & Euzet, 2007, from *M. costae* [3]. This species has a vaginal structure superficially resembling species of the beverleyburtonae group but there is no secondary chamber. In addition, it is distinguished by the lack of squamodiscs.

Analysis of COI sequences of monogeneans

We obtained COI sequences of *P. hayet* n. sp. (1 specimen), *P. sosia* Neifar & Euzet, 2007 (4 specimens) and *P. regius* Chaabane et al., 2015 (1 specimen). The phylogenetic analysis was performed with these 6 new sequences and available sequences of *Pseudorhabdosynochus*, i.e. 1 sequence of *P. sulamericanus* Santos et al., 2000, 7 sequences of *P. cyanopodus* Sigura & Justine, 2008, and, as an outgroup, *Lamellodiscus ignoratus* Palombi, 1943, a member of the Diplectanidae family to which *Pseudorhabdosynochus* belongs. In the tree obtained by the NJ method (Fig 9), the two species *P. hayet* and *P. sosia* were sister-groups. The genetic distance between species of *Pseudorhabdosynochus* varied from 13 to 26%, and the distance between *P. hayet* and *P. sosia* was 13–14% (Table 4).

Discussion

Gills of groupers (Epinephelidae) harbour numerous diplectanid monogeneans assigned to *Pseudorhabdosynochus* [1–5, 20, 29, 35–38]. This genus currently contains more than 80 valid species [39] which are generally specialists. Based on the great similarity in the shape of the sclerotised vagina, the primary character for *Pseudorhabdosynochus* species diagnosis, the 'beverleyburtonae group' is proposed herein to include two new and two previously described species on *Mycteroperca* spp. in the Mediterranean and Eastern Atlantic Ocean. Several groups of *Pseudorhabdosynochus* species have already been suggested such as those on *Epinephelus* spp. in the southern Pacific, namely the '*P. cupatus* group' [35] (including *P. cupatus* (Young, 1969), *P. cyathus* Hinsinger & Justine 2006, *P. calathus* Hinsinger & Justine 2006, and three unnamed species) [20, 40], the 'huitoe complex' (including *P. huitoe* Justine, 2007, *P. manifestus* Justine & Sigura, 2007, and *P. crassus* Schoelinck & Justine, 2011) [1, 37, 41], and a small group that includes only *P. exoticus* Sigura & Justine, 2008 and *P. exoticoideis* Justine & Henry, 2010 [38, 42]. Kritsky et al. 2015 also proposed three groups of *Pseudorhabdosynochus* species

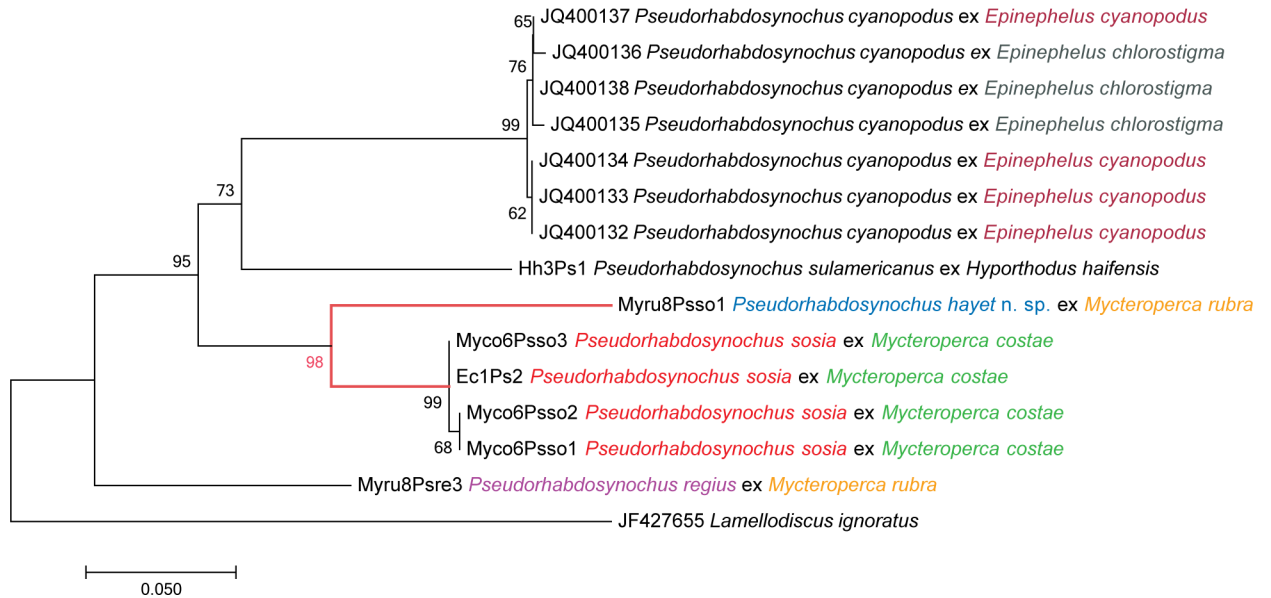


Fig 9. Evolutionary relationships of taxa. The matrix includes new sequences of *Pseudorhabdosynochus* spp. and available sequences from GenBank. The analysis, using the Neighbour-Joining method, involved 15 nucleotide sequences, and there were a total of 290 positions in the final dataset. Bootstrap test results (500 replicates) are shown next to the branches.

doi:10.1371/journal.pone.0159886.g009

on *Epinephelus* spp., *Mycteroperca* spp., and *Hyporthodus* spp., respectively, in the western Atlantic Ocean [2]. These groups do not have formal systematic value but are useful for distinguishing species among the numerous valid *Pseudorhabdosynochus* species.

In this paper, we used mainly the morphology of the sclerotised vaginae to differentiate the diplectanid species. However, we added molecular information on two species for which the differentiation was mainly based on differences of measurements, but not on differences of morphology, namely *P. sosia* and the new species *P. hayet*. Using multiple and complementary sources of data, i.e. ‘integrative taxonomy’ [43], is important for better species characterisation and delimitation. In the case of *P. sosia* and *P. hayet*, the fact that the hosts are different is additional information advocating different parasite species, but is certainly not sufficient because it has been demonstrated that, in some cases, the same *Pseudorhabdosynochus* species can parasitize different host fish [44]; in that particular case, the genetic differences between specimens of *P. cyanopodus* Sigura & Justine, 2008 from two hosts were very low (0–1.5%). The genetic distance between *P. sosia* and *P. hayet* was 13–14%, thus lower than the differences observed between other *Pseudorhabdosynochus* species in our dataset (19–26%), but much higher than the differences between specimens of *P. cyanopodus* found on two different hosts [44]. The literature on monogenean COI sequences and their interspecific distances is scarce. Vanhove et al. (2013) have emphasized the difficulties encountered in using COI for the differentiation of species in various groups of flatworms, including monogeneans; however, they cite a case in which two valid diplectanid species were divergent by only 3.2% [45]. In other flatworms (geoplanid triclads), such as *Microplana* spp., intraspecific variation was up to 4%, and interspecific variation was 19% [46], and a difference of 4.8% between *Platydemus manokwari* haplotypes was considered intraspecific [47]. New species are hypotheses that should be tested [48]. We conclude that the 13–14% difference of COI sequences between *P. sosia* and *P. hayet* is indicative of two different species, in addition to morphological differences and different hosts, and that *P. hayet* should be erected as a new species.

A list of 10 grouper-diplectanid species in the Mediterranean Sea has been provided (see [Table 1](#) in [6]), and another species, *P. sulamericanus*, was recently added [6, 7]. The two new species of *Pseudorhabdosynochus* described here bring the total of species known in the Mediterranean to thirteen; however, the biodiversity of diplectanids on Mediterranean groupers is not yet fully documented.

Author Contributions

Conceived and designed the experiments: AC LN DG JLJ. Performed the experiments: AC LN DG JLJ. Analyzed the data: AC LN DG JLJ. Contributed reagents/materials/analysis tools: AC LN DG JLJ. Wrote the paper: AC LN DG JLJ. Made the drawings: AC JLJ. Obtained sequences: DG. Performed phylogenetic analysis: AC JLJ.

References

1. Justine J-L. Parasite biodiversity in a coral reef fish: twelve species of monogeneans on the gills of the grouper *Epinephelus maculatus* (Perciformes: Serranidae) off New Caledonia, with a description of eight new species of *Pseudorhabdosynochus* (Monogenea: Diplectanidae). *Syst Parasitol*. 2007; 66(2):81–129. doi: [10.1007/s11230-006-9057-3](https://doi.org/10.1007/s11230-006-9057-3) PMID: [17886741](https://pubmed.ncbi.nlm.nih.gov/17886741/) ISI:000244450600001.
2. Kritsky DC, Bakenhaster M, Adams D. *Pseudorhabdosynochus* species (Monogeneoidea, Diplectanidae) parasitizing groupers (Serranidae, Epinephelinae, Epinephelini) in the western Atlantic Ocean and adjacent waters, with descriptions of 13 new species. *Parasite*. 2015; 22:24. doi: [10.1051/parasite/2015024](https://doi.org/10.1051/parasite/2015024) PMID: [26272242](https://pubmed.ncbi.nlm.nih.gov/26272242/)
3. Neifar L, Euzet L. Five new species of *Pseudorhabdosynochus* (Monogenea: Diplectanidae) from the gills of *Epinephelus costae* (Teleostei: Serranidae). *Folia Parasitol*. 2007; 54:117–28. PMID: [17886741](https://pubmed.ncbi.nlm.nih.gov/17886741/)
4. Mendoza-Franco EF, Violante-González J, Rojas Herrera AA. Six new and one previously described species of *Pseudorhabdosynochus* (Monogeneoidea, Diplectanidae) infecting the gills of groupers (Perciformes, Serranidae) from the Pacific coasts of Mexico and Panama. *J Parasitol*. 2011; 97:20–35. doi: [10.1645/GE-2716.1](https://doi.org/10.1645/GE-2716.1) PMID: [21348602](https://pubmed.ncbi.nlm.nih.gov/21348602/)
5. Justine J-L, Beveridge I, Boxshall GA, Bray RA, Moravec F, Trilles J-P, et al. An annotated list of parasites (Isopoda, Copepoda, Monogenea, Digenea, Cestoda and Nematoda) collected in groupers (Serranidae, Epinephelinae) in New Caledonia emphasizes parasite biodiversity in coral reef fish. *Folia Parasitol*. 2010; 57:237–62. doi: [10.14411/fp.2010.032](https://doi.org/10.14411/fp.2010.032) PMID: [21344838](https://pubmed.ncbi.nlm.nih.gov/21344838/)
6. Chaabane A, Neifar L, Justine J-L. *Pseudorhabdosynochus regius* n. sp. (Monogenea, Diplectanidae) from the mottled grouper *Mycteroperca rubra* (Teleostei) in the Mediterranean Sea and Eastern Atlantic. *Parasite*. 2015; 22:9. doi: [10.1051/parasite/2015005](https://doi.org/10.1051/parasite/2015005) PMID: [25674913](https://pubmed.ncbi.nlm.nih.gov/25674913/)
7. Chaabane A, Justine J-L, Gey D, Bakenhaster M, Neifar L. *Pseudorhabdosynochus sulamericanus* (Monogenea, Diplectanidae), a parasite of deep-sea groupers (Serranidae) occurs transatlantically on three congeneric hosts (*Hyporthodus* spp.), one from the Mediterranean Sea and two from the western Atlantic. *PeerJ*. 2016; 4:2233. doi: [10.7717/peerj.2233](https://doi.org/10.7717/peerj.2233)
8. Euzet L, Oliver G. Diplectanidae (Monogenea) de Téléostéens de la Méditerranée occidentale. II. Parasites d'*Epinephelus gigas* (Brünnich, 1768). *Ann Parasitol Hum Comp*. 1965; 40:517–23. PMID: [5884809](https://pubmed.ncbi.nlm.nih.gov/5884809/)
9. Oliver G. Recherches sur les Diplectanidae (Monogenea) parasites de téléostéens du Golfe du Lion. I. Diplectaninae Monticelli, 1903. *Vie Milieu*. 1968; Série A, 19:95–138.
10. Oliver G. Description de deux nouvelles espèces du genre *Cycloplectanum* Oliver, 1968 (Monogenea, Monopisthocotylea, Diplectanidae). *Ann Parasitol Hum Comp*. 1984; 59:31–9. PMID: [6721367](https://pubmed.ncbi.nlm.nih.gov/6721367/)
11. Santos CP, Buchmann K, Gibson DI. *Pseudorhabdosynochus* spp. (Monogenea: Diplectanidae) from the gills of *Epinephelus* spp. in Brazilian waters. *Syst Parasitol*. 2000; 45(2):145–53. doi: [10.1023/A:1006232029426](https://doi.org/10.1023/A:1006232029426) PMID: [1000085138500006](https://pubmed.ncbi.nlm.nih.gov/1000085138500006/).
12. Ward RD, Zemlak TS, Innes BH, Last PR, Hebert PD. DNA barcoding Australia's fish species. *Philos Trans R Soc Lond B Biol Sci*. 2005; 360(1462):1847–57. doi: [10.1098/rstb.2005.1716](https://doi.org/10.1098/rstb.2005.1716) PMID: [16214743](https://pubmed.ncbi.nlm.nih.gov/16214743/)
13. Schoelinc C, Hingsinger DD, Dettai A, Cruaud C, Justine J-L. A phylogenetic re-analysis of groupers with applications for ciguatera fish poisoning. *PLoS ONE*. 2014; 9(8):e98198. doi: [10.1371/journal.pone.0098198](https://doi.org/10.1371/journal.pone.0098198) PMID: [25093850](https://pubmed.ncbi.nlm.nih.gov/25093850/)
14. Froese R, Pauly D, editors. FishBase. World Wide Web electronic publication. www.fishbase.org2016.

15. Heemstra PC, Randall JE. FAO Species Catalogue. Vol. 16. Groupers of the world (Family Serranidae, Subfamily Epinephelinae). An annotated and illustrated catalogue of the grouper, rockcod, hind, coral grouper and lyretail species known to date. Rome: FAO; 1993. 382 p.
16. Craig MT, Sadovy de Mitcheson YJ, Heemstra PC. Groupers of the world: a field and market guide. Grahamstown: NISC; 2012. 424 p.
17. Craig MT, Hastings PA. A molecular phylogeny of the groupers of the subfamily Epinephelinae (Serranidae) with a revised classification of the Epinephelini. Ichthyol Res. 2007; 54(1):1–17. doi: [10.1007/s10228-006-0367-x](https://doi.org/10.1007/s10228-006-0367-x) PMID: [ISI:000244724300001](https://pubmed.ncbi.nlm.nih.gov/18784790/).
18. Ratnasingham S, Hebert PDN. BOLD: The Barcode of Life Data System (www.barcodinglife.org). Mol Ecol Notes. 2007; 7(3):355–64. doi: [10.1111/j.1471-8286.2007.01678.x](https://doi.org/10.1111/j.1471-8286.2007.01678.x) PMID: [18784790](https://pubmed.ncbi.nlm.nih.gov/18784790/)
19. Malmberg G. Om förekomsten av *Gyrodactylus* på svenska fiskar (In Swedish.). Skrifter Utgivna av Södra Sveriges Fiskeriförening, Årsskrift. 1957; 1956:19–76.
20. Justine J-L. Species of *Pseudorhabdosynochus* Yamaguti, 1958 (Monogenea: Diplectanidae) from *Epinephelus fasciatus* and *E. merra* (Perciformes: Serranidae) off New Caledonia and other parts of the Indo-Pacific Ocean, with a comparison of measurements of specimens prepared using different methods, and a description of *P. caledonicus* n. sp. Syst Parasitol. 2005; 62(1):1–37. doi: [10.1007/s11230-005-5480-0](https://doi.org/10.1007/s11230-005-5480-0) PMID: [ISI:000231512700001](https://pubmed.ncbi.nlm.nih.gov/19048406/).
21. Littlewood DTJ, Rohde K, Clough KA. Parasite speciation within or between host species?—Phylogenetic evidence from site-specific polystome monogeneans. Int J Parasitol. 1997; 27:1289–97. doi: [10.1016/S0020-7519\(97\)00086-6](https://doi.org/10.1016/S0020-7519(97)00086-6) PMID: [9421713](https://pubmed.ncbi.nlm.nih.gov/9421713/)
22. Kimura M. A simple method for estimating evolutionary rates of base substitutions through comparative studies of nucleotide sequences. J Mol Evol. 1980; 16(2):111–20. Epub 1980/12/01. PMID: [7463489](https://pubmed.ncbi.nlm.nih.gov/7463489/).
23. Kumar S, Stecher G, Tamura K. MEGA7: Molecular Evolutionary Genetics Analysis version 7.0 for bigger datasets. Mol Biol Evol. 2016; in press. doi: [10.1093/molbev/msw054](https://doi.org/10.1093/molbev/msw054)
24. Moravec F, Chaabane A, Justine J-L, Neifar L. Two gonad-infecting species of *Philometra* (Nematoda: Philometridae) from groupers (Serranidae) off Tunisia, with a key to *Philometra* species infecting serranid gonads. Parasite. 2016; 23:8. doi: [10.1051/parasite/2016008](https://doi.org/10.1051/parasite/2016008) PMID: [26956219](https://pubmed.ncbi.nlm.nih.gov/26956219/)
25. Oliver G. Les Diplectanidae Bychowsky, 1957 (Monogenea, Monopisthocotylea, Dactylogyridea). Systématique. Biologie. Ontogénie. Écologie. Essai de phylogénèse. [Thèse d'État]: Académie de Montpellier, Université des Sciences et Techniques du Languedoc; 1987.
26. Roubbedakis K, Marchiori NC, Paseto A, Goncalves EL, Luque JL, Cepeda PB, et al. Parasite fauna of wild and cultured dusky-grouper *Epinephelus marginatus* (Lowe, 1834) from Ubatuba, southeastern Brazil. Braz J Biol. 2013; 73(4):871–8. doi: [10.1590/S1519-69842013000400025](https://doi.org/10.1590/S1519-69842013000400025) PMID: [24789405](https://pubmed.ncbi.nlm.nih.gov/24789405/).
27. Ulmer MJ, James HA. Monogeneans of marine fishes from the Bay of Naples. Trans Am Microsc Soc. 1981; 100(4):392–409. doi: [10.2307/3226153](https://doi.org/10.2307/3226153)
28. Kritsky DC, Beverley-Burton M. The status of *Pseudorhabdosynochus* Yamaguti, 1958, and *Cycloplectanum* Oliver, 1968 (Monogenea: Diplectanidae). Proc Biol Soc Wash. 1986; 99:17–20.
29. Justine J-L. A redescription of *Pseudorhabdosynochus epinepheli* (Yamaguti, 1938), the type-species of *Pseudorhabdosynochus* Yamaguti, 1958 (Monogenea: Diplectanidae), and the description of *P. satyui* n. sp. from *Epinephelus akaara* off Japan. Syst Parasitol. 2009; 72:27–55. doi: [10.1007/s11230-008-9171-5](https://doi.org/10.1007/s11230-008-9171-5) PMID: [19048406](https://pubmed.ncbi.nlm.nih.gov/19048406/)
30. Vidal-Martínez VM, Aguirre-Macedo L, Mendoza-Franco EF. *Pseudorhabdosynochus yucatanensis* sp. n. (Monogenea: Diplectanidae) from the gills of the red grouper *Epinephelus morio* (Pisces: Serranidae) of the Yucatan Peninsula, Mexico. Folia Parasitol. 1997; 44:274–8. PMID: [9437840](https://pubmed.ncbi.nlm.nih.gov/9437840/)
31. Moravec F, Chaabane A, Neifar L, Gey D, Justine JL. Descriptions of *Philometra aenei* n. sp. and *P. tunisiensis* n. sp. (Nematoda: Philometridae) from *Epinephelus* spp. off Tunisia confirm a high degree of host specificity of gonad-infecting species of *Philometra* in groupers (Serranidae). Syst Parasitol. 2016; 93(2):115–28. doi: [10.1007/s11230-015-9610-z](https://doi.org/10.1007/s11230-015-9610-z) PMID: [26790677](https://pubmed.ncbi.nlm.nih.gov/26790677/)
32. Justine J-L. Parasites of coral reef fish: how much do we know? With a bibliography of fish parasites in New Caledonia. Belg J Zool. 2010; 140 (Suppl.):155–90. PMID: [WOS:000286593900012](https://pubmed.ncbi.nlm.nih.gov/200286593900012/).
33. Knoff M, Cohen SC, Cárdenas MQ, Cárdenas-Callirgos JM, Gomes DC. A new species of diplectanid (Monogeneoidea) from *Paranthias colonus* (Perciformes, Serranidae) off Peru. Parasite. 2015; 22:11. doi: [10.1051/parasite/2015011](https://doi.org/10.1051/parasite/2015011) PMID: [25754099](https://pubmed.ncbi.nlm.nih.gov/25754099/)
34. Justine J-L, Euzet L. Diplectanids (Monogenea) parasitic on the gills of the coralgroupers *Plectropomus laevis* and *P. leopardus* (Perciformes, Serranidae) off New Caledonia, with the description of five new species and the erection of *Echinoplectanum* n. g. Syst Parasitol. 2006; 64(3):147–72. doi: [10.1007/s11230-006-9028-8](https://doi.org/10.1007/s11230-006-9028-8) PMID: [ISI:000238446600001](https://pubmed.ncbi.nlm.nih.gov/16666666/).
35. Hinsinger DD, Justine J-L. The '*Pseudorhabdosynochus cupatus* group' (Monogenea: Diplectanidae) on *Epinephelus fasciatus*, *E. howlandi*, *E. rivulatus* and *E. merra* (Perciformes: Serranidae) off New

- Caledonia, with descriptions of *Pseudorhabdosynochus cyathus* n. sp. and *P. calathus* n. sp. Syst Parasitol. 2006; 64(2):69–90. doi: [10.1007/s11230-005-9018-2](https://doi.org/10.1007/s11230-005-9018-2) PMID: [ISI:000238294400001](https://pubmed.ncbi.nlm.nih.gov/18100000/).
36. Justine J-L. *Pseudorhabdosynochus argus* n. sp. (Monogenea: Diplectanidae) from *Cephalopholis argus*, *P. minutus* n. sp. and *Diplectanum nanus* n. sp. from *C. sonnerati* and other monogeneans from *Cephalopholis* spp. (Perciformes: Serranidae) off Australia and New Caledonia. Syst Parasitol. 2007; 68(3):195–215. doi: [10.1007/s11230-007-9096-4](https://doi.org/10.1007/s11230-007-9096-4) PMID: [ISI:000249733100004](https://pubmed.ncbi.nlm.nih.gov/18100000/).
 37. Justine J-L, Sigura A. Monogeneans of the malabar grouper *Epinephelus malabaricus* (Perciformes, Serranidae) off New Caledonia, with a description of six new species of *Pseudorhabdosynochus* (Monogenea: Diplectanidae). Zootaxa. 2007; 1543:1–44. PMID: [ISI:000248581900001](https://pubmed.ncbi.nlm.nih.gov/18100000/).
 38. Sigura A, Justine J-L. Monogeneans of the speckled blue grouper, *Epinephelus cyanopodus* (Perciformes, Serranidae), from off New Caledonia, with a description of four new species of *Pseudorhabdosynochus* and one new species of *Laticola* (Monogenea: Diplectanidae), and evidence of monogenean faunal changes according to the size of fish. Zootaxa. 2008; 1695:1–44. PMID: [ISI:000252777100001](https://pubmed.ncbi.nlm.nih.gov/18100000/).
 39. Gibson DI. Monogenea. Accessed through: World Register of Marine Species at <http://www.marinespecies.org/aphia.php?p=taxdetails&id=798> 2016 [2013-05-14].
 40. Justine J-L, Vignon M. Monogeneans of the grouper *Epinephelus tauvina* (Perciformes, Serranidae) off Moorea, French Polynesia, with a description of *Pseudorhabdosynochus pai* n. sp. (Monogenea: Diplectanidae). Syst Parasitol. 2009; 72:113–25. doi: [10.1007/s11230-008-9159-1](https://doi.org/10.1007/s11230-008-9159-1) PMID: [19115085](https://pubmed.ncbi.nlm.nih.gov/19115085/)
 41. Schoelinck C, Justine J-L. Four species of *Pseudorhabdosynochus* (Monogenea: Diplectanidae) from the camouflage grouper *Epinephelus polyphkadion* (Perciformes: Serranidae) off New Caledonia. Syst Parasitol. 2011; 79:41–61. doi: [10.1007/s11230-010-9289-0](https://doi.org/10.1007/s11230-010-9289-0) PMID: [21487947](https://pubmed.ncbi.nlm.nih.gov/21487947/)
 42. Justine J-L, Henry É. Monogeneans from *Epinephelus chlorostigma* (Val.) (Perciformes: Serranidae) off New Caledonia, with the description of three new species of diplectanids. Syst Parasitol. 2010; 77:81–105. doi: [10.1007/s11230-010-9263-x](https://doi.org/10.1007/s11230-010-9263-x) PMID: [20852982](https://pubmed.ncbi.nlm.nih.gov/20852982/)
 43. Dayrat B. Towards integrative taxonomy. Biol J Linn Soc. 2005; 85(3):407–15. doi: [10.1111/j.1095-8312.2005.00503.x](https://doi.org/10.1111/j.1095-8312.2005.00503.x)
 44. Schoelinck C, Cruaud C, Justine J-L. Are all species of *Pseudorhabdosynochus* strictly host specific?—a molecular study. Parasitol Int. 2012; 61:356–9. doi: [10.1016/j.parint.2012.01.009](https://doi.org/10.1016/j.parint.2012.01.009) PMID: [22326703](https://pubmed.ncbi.nlm.nih.gov/22326703/)
 45. Vanhove MP, Tessens B, Schoelinck C, Jondelius U, Littlewood DT, Artois T, et al. Problematic barcoding in flatworms: A case-study on monogeneans and rhabdocoels (Platyhelminthes). ZooKeys. 2013; (365):355–79. doi: [10.3897/zookeys.365.5776](https://doi.org/10.3897/zookeys.365.5776) PMID: [24453567](https://pubmed.ncbi.nlm.nih.gov/24453567/).
 46. Álvarez-Presas M, Mateos E, Vila-Farré M, Sluys R, Riutort M. Evidence for the persistence of the land planarian species *Microplana terrestris* (Müller, 1774) (Platyhelminthes, Tricladida) in microrefugia during the Last Glacial Maximum in the northern section of the Iberian Peninsula. Mol Phylogenet Evol. 2012; 64(3):491–9. doi: [10.1016/j.ympev.2012.05.001](https://doi.org/10.1016/j.ympev.2012.05.001) PMID: [22587911](https://pubmed.ncbi.nlm.nih.gov/22587911/)
 47. Justine J-L, Winsor L, Barrière P, Fanai C, Gey D, Han AWK, et al. The invasive land planarian *Platydemus manokwari* (Platyhelminthes, Geoplanidae): records from six new localities, including the first in the USA. PeerJ. 2015; 3:e1037. doi: [10.7717/peerj.1037](https://doi.org/10.7717/peerj.1037) PMID: [26131377](https://pubmed.ncbi.nlm.nih.gov/26131377/)
 48. Sluys R. The unappreciated, fundamentally analytical nature of taxonomy and the implications for the inventory of biodiversity. Biodivers Conserv. 2013; 22(4):1095–105. doi: [10.1007/s10531-013-0472-x](https://doi.org/10.1007/s10531-013-0472-x)