

Initial experience of single-port video-assisted thoracoscopic surgery sleeve lobectomy and systematic mediastinal lymphadenectomy for non-small-cell lung cancer

Hao Chen, Guobing Xu, Bin Zheng, Wei Zheng, Yong Zhu, Zhaohui Guo, Chun Chen

Department of Thoracic Surgery, Fujian Medical University Fujian Union Hospital, Fuzhou 350001, China

Contributions: (I) Conception and design: C Chen; (II) Administrative support: C Chen; (III) Provision of study materials or patients: W Zheng, Y Zhu, Z Guo; (IV) Collection and assembly of data: H Chen; (V) Data analysis and interpretation: G Xu, B Zheng; (VI) Manuscript writing: All authors; (VII) Final approval of manuscript: All authors.

Correspondence to: Chun Chen. Department of Thoracic Surgery, Fujian Medical University Fujian Union Hospital, 29 Xinquan Road, Fuzhou 350000, China. Email: chenchun0209@163.com.

Background: In this study, we evaluate the feasibility and safety of single-port video-assisted thoracoscopic surgery (VATS) sleeve lobectomy (SL) and systematic mediastinal lymphadenectomy and summarize our surgical experience.

Methods: From October 2014 to December 2015, eight cases of single-port VATS SL [seven male patients and one female patient, median age 56.0 (range, 38–63) years] were performed by a single group of surgeons in Fujian Medical University Fujian Union Hospital. The median tumor size was 2.7 cm. Types of resection included four right upper, one right lower, and three left upper sleeve lobectomies. Systematic mediastinal lymphadenectomy was performed in all patients. A modified anastomosis technique developed by the author (Chen's technique) was applied for bronchial anastomosis. Postoperative outcome and short-term follow-up data were recorded and analyzed.

Results: All eight operations were completed uneventfully with no conversion to thoracotomy or reoperation required. No perioperative death was observed. Major results (medians or percentages) were as follows: operative duration, 234.5 [185–345] min; bronchial anastomosis duration, 38.0 [30–43] min; blood loss, 65.0 [50–200] mL; number of lymph node dissected, 22.5 [18–37]. The postoperative complication rate was 37.5% (three of eight cases, including two pulmonary infections and one atrial fibrillation). All patients recovered and were discharged uneventfully with symptomatic therapy. Pathology showed squamous cell carcinoma in seven patients and adenocarcinoma in one patient; two patients were in TNM stage IB, three in stage IIA, one in stage IIB, and two in stage IIIA. The mean follow-up was 7.5 [2–15] months. There were no tumor recurrences or bronchial anastomotic complications.

Conclusions: Single-port VATS SL and mediastinal lymphadenectomy are safe and feasible. Improvements in operating procedures can help facilitate single-port VATS. The application of Chen's technique in bronchial anastomosis is easy and reliable and shows a satisfactory short-term clinical outcome.

Keywords: Single-port video-assisted thoracoscopic surgery (single-port VATS); sleeve lobectomy (SL); systematic mediastinal lymphadenectomy; bronchial anastomosis; non-small-cell lung cancer (NSCLC)

Submitted Feb 14, 2016. Accepted for publication Jun 27, 2016.

doi: 10.21037/jtd.2016.07.89

View this article at: <http://dx.doi.org/10.21037/jtd.2016.07.89>

Introduction

Sleeve lobectomy (SL) and pneumonectomy are surgical options for the treatment of central-type non-small-cell lung cancer (NSCLC). Some studies reveal that, compared with pneumonectomy, SL is a more valid therapeutic option and offers better long-term survival and quality of life without increasing the morbidity and mortality in selected patients (1-3). However, the complexity of the procedure makes SL a technically challenging operation, and it was once considered a contraindication for video-assisted thoracoscopic surgery (VATS) in many institutions (4,5). In the past few years, some surgeons have become capable of performing SL via VATS because of their accumulated experience (6,7). Moreover, many case series have proved the safety and feasibility of VATS SL (6,8). Conventional VATS has been mostly performed with three or four incisions (8,9). The first case report of single-port VATS SL was by Gonzalez-Rivas *et al.* in 2013 (10), which proved it is possible to perform SL with fewer incisions. However, owing to the extensive alterations in operating technique required, single-port VATS SL is a more technically demanding operation, so most published data have been in the form of case reports (10,11).

After sufficient experience gained with conventional multi-port VATS, we have applied single-port VATS for the radical resection of NSCLC since May 2014 (12). To date, more than 400 single-port VATS, including wedge dissection, lobectomy, segmentectomy, SL, and other complex pulmonary resections, have been performed in our institution. Here, we present our current experience with single-port VATS SL and systematic mediastinal lymphadenectomy.

Methods

From October 2014 to December 2015, eight cases of VATS SL were performed in our institution by a single-port approach. The cohort included seven male patients and one female patient, with a median age of 56.0 years (range, 38–63 years). All patients were diagnosed with NSCLC by preoperative video bronchoscopic biopsy. An enhanced chest computed tomography scan was performed to confirm the tumor location, which was in the right upper lobe in four patients, right lower lobe in one patient, and left upper lobe in three patients. Enhanced brain magnetic resonance imaging, abdominal and cervical ultrasonography, and whole-body bone emission computed tomography were

routinely performed to exclude metastases. Indications for single-port VATS SL were similar to those for conventional multi-port VATS, as follows: (I) central-type NSCLC involving lobar bronchus or part of the main bronchus; (II) tumor maximum diameter less than 6 cm; (III) exclusion of mediastinal lymph node and distant metastasis; (IV) patients' lung function able to tolerate lobectomy or even pneumonectomy. Systematic lymph node dissection was conducted in all cases.

Surgical technique

Under general anesthesia with a double-lumen endotracheal tube, the patient was placed in a lateral position, and the surgeon stood at the patient's ventral side (*Figure 1*). The unique incision was made at the 4th intercostal space on the anterior axillary line with no rib spreading. The incision was covered by a silicon wound protector, and the camera was inserted. The entire procedure was completed via monitor visualization.

Thoracoscopic exploration was conducted, and no extensive pleural adhesion was found in any patient. The inferior pulmonary ligament was mobilized first, after which the mediastinal pleura was opened from posterior to anterior. For right upper, right lower, and left upper SL, the hilar structure was dissected in order of pulmonary artery, pulmonary vein, bronchus. The pulmonary vein and the larger pulmonary arterial branch were divided with the stapler while the smaller pulmonary arterial branch was ligated by #7 silk thread. Hypoplastic interlobar fissure was divided with a stapler.

Next, systematic mediastinal lymph node dissection was performed (stations 2, 3, 4, 7, 8, and 9 for right pulmonary operations and stations 4, 5, 6, 7, 8 and 9 for left pulmonary operations). For right upper SL, we routinely divide the azygos vein to maintain sufficient exposure of the operating field, while for left upper SL, we lifted the trunk of the left pulmonary artery by threading a 1-0 silk suture through the posterior chest wall with a crochet needle to prevent visual interference and facilitate the procedure (13). For station 2R lymphadenectomy, the mediastinal pleura are opened from the triangular region delineated by the azygos vein arch, superior vena cava, and vagal nerve. Next, paratracheal lymph nodes around the azygos vein arch are dissected, the pleura inferior to the azygos vein arch is separated, and the vein is lifted to complete the lymph node dissection (*Figure 2A-C*). For station 4L lymphadenectomy, the vagal nerve trunk is exposed anteriorly and the structures in the aortopulmonary



Figure 1 Position of the surgeon and camera holder in single-port VATS. The surgeon stands at the patient's ventral side, while the camera holder stands at the dorsal side. VATS, video-assisted thoracoscopic surgery.

window space are mobilized. Next, we lift the mediastinal pleura and expose the recurrent laryngeal nerve, and the lymph node and surrounding fat are dissected between the aortic arch and pulmonary artery trunk (*Figure 2D-F*). The remaining left lower paratracheal lymph nodes are dissected posteriorly. Station 7L lymph nodes are the most difficult challenge because of their deep location. We retract the pulmonary artery and pericardium anteriorly to open the posterior mediastinal pleura. To obtain better exposure, we rotate the operating bed anteriorly to maneuver the patient into a semi-prone position. The esophagus is then retracted posteriorly, and the subcarinal lymph nodes are dissected (*Figure 2G-I*).

The bronchus was transected by scalpel and scissors. After

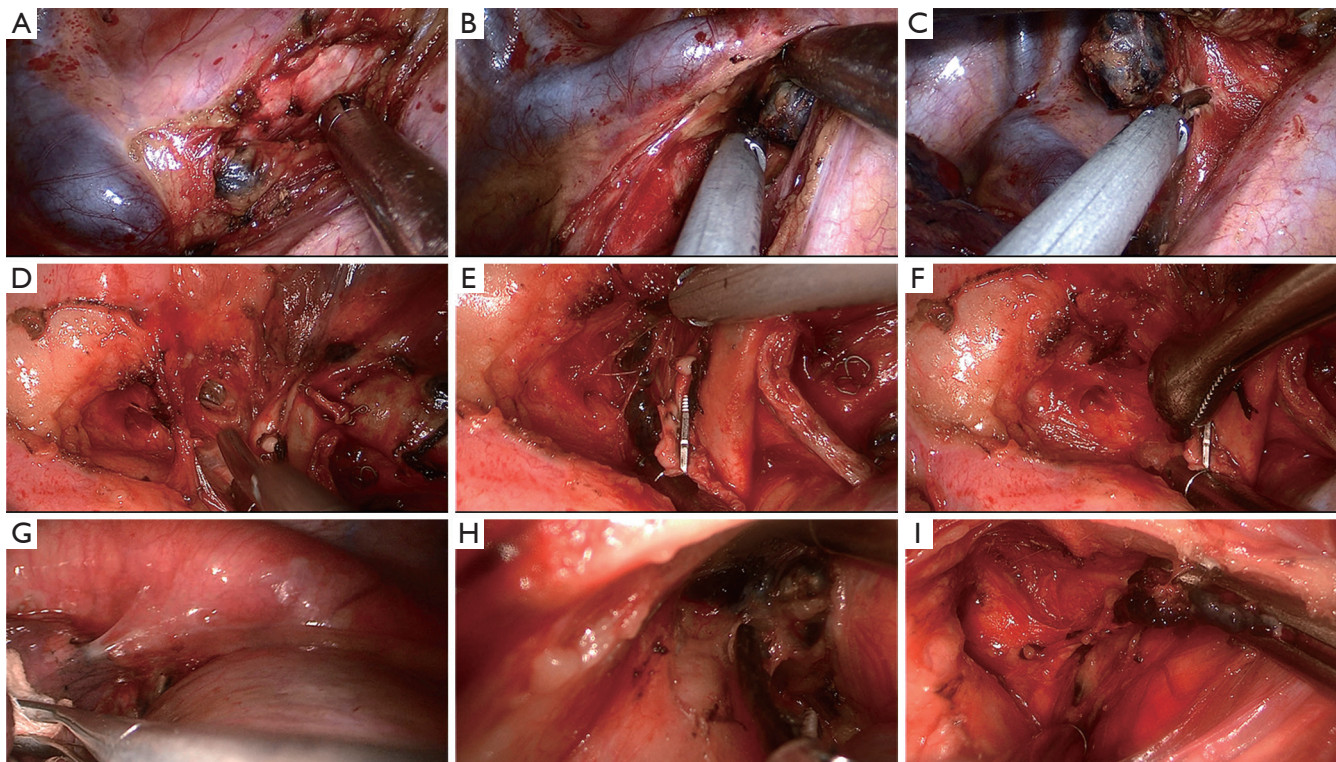


Figure 2 Procedures of station 2R, 4L, 4R lymph node dissection in single-port approach. (A) Opening the mediastinal pleura in the triangular region delineated by the azygos vein arch, superior vena cava, and vagal nerve; (B) lifting the azygos vein arch to expose the inferior paratracheal lymph nodes; (C) retracting the lymph node superiorly and dissecting; (D) mobilizing the structures in the aortopulmonary window space; (E) lifting the mediastinal pleura to ensure sufficient exposure of the left recurrent laryngeal nerve and enabling lower paratracheal lymphadenectomy; (F) dissecting the lymph nodes and surrounding fat between the aortic arch and pulmonary artery trunk; (G) retracting the pulmonary artery and pericardium anteriorly to open the posterior mediastinal pleura; (H) retracting the esophagus posteriorly to expose the left subcarinal lymph node; (I) dissecting the subcarinal lymph nodes.

the margins of the bronchus were confirmed as negative by intraoperative frozen-section examination, an end-to-end bronchial anastomosis was performed with continuous suturing using a single 3-0 prolene suture. A modified anastomosis technique developed by the author (Chen's technique) was applied to the bronchial anastomosis. First, we made a stitch on the posterior bronchial wall and a knot outside the lumen, then the posterior quarter of the circumference was continuously sutured. The other three quarters of the circumference were sutured in sequence in the same way. The procedure was completed with a final knot outside the lumen (*Figure 3*).

A thin-fiber bronchoscopic check was performed to observe the anastomosis. We then performed a leakage test and found no leakage at an airway pressure of 30 cmH₂O (2.94 kPa). Finally, a 28 F drainage tube was placed at the incision, and a central venous catheter was placed in the seventh or eighth intercostal space on the posterior axillary line (*Figure 4*).

Results

All of the operations were completed uneventfully, without the need for conversion to conventional multi-port VATS or thoracotomy. There was no perioperative mortality. Major statistics, reported as medians or percentages, were as follows: operative duration, 234.5 min (range, 185–345 min); bronchial anastomosis duration, 38.0 min (30–43 min); blood loss, 65.0 mL (50–200 mL); number of lymph node dissected, 22.5 [18–37]. The postoperative complication rate was 37.5% (three out of eight patients), including two pulmonary infections and one atrial fibrillation. All patients recovered and were discharged uneventfully with symptomatic therapy. Pathological typing determined seven cases of squamous cell carcinoma and one case of adenocarcinoma. TNM staging of NSCLC revealed that two patients were in stage IB, 3 in stage IIA, 1 in stage IIB, and 2 in stage IIIA. The median follow-up was 7.5 months (2–15 months). No tumor recurrence or bronchial anastomotic complication was reported.

Discussion

In recent years, indications for single-port VATS were widely extended, complex pulmonary resection such as SL (14), double-sleeve resection (15), carinal resection (16) had been proved to be technically feasible. Although single-port VATS obviates the posterior and middle ports, there are

notable differences in operative vision and surgical approach. The vision is directed at the target tissue, which according to Gonzalez-Rivas (17) mimics the open procedure. Although the field of vision from a single incision is limited, the rotation of a 30° camera provides a panoramic view (18). The surgical approach is also proximate to open surgery with respect to the absence of an optical plane created by conventional three-port triangulation, as Gonzalez-Rivas mentions (17). Another advantage of single-port VATS is the incision cosmesis, which is to some extent crucial for young patients. The ability to perform operations with one incision while following the oncological principles of major pulmonary resections also represents real progress. Two propensity-matched studies conducted by Shen *et al.* (19) and Wang *et al.* (20) showed that single-port VATS could achieve comparable or better perioperative outcomes than a multiple-incision approach. That said, these inspired reports still require larger sample sizes and randomized controlled studies for validation.

In terms of the operative time, bronchial anastomosis time, blood loss, and postoperative outcomes, the present study compares well with multi-port VATS SL literature (6,8,9). The success in performing single-port SL results from experience accumulated in three-port VATS lobectomy. Judging from our preliminary results (21) the learning curve of single-port lobectomy should be no longer than multi-port VATS for skilled surgeon, with the regression line for operative time falling to the average time of conventional surgeries after fewer than 30 procedures.

Mutual interference among the instruments is one of the main problems leading to prolonged operative time of single-port SL. To avoid this disadvantage and ensure a sufficient field of vision, we summarize our experience from three aspects. First, reasonable design of the incision. The incision should be somewhat distant from the lesion and hilar structure. In most cases, the incision is usually located at the 5th intercostal space, while for upper SL or in a heavier patient, the 4th intercostal space will be more feasible (12). Second, the surgeon should judiciously use both hands and choose an appropriate instrument. In our practice, for a right-handed surgeon, a harmonic scalpel, electrical hook, or other conventional straight instrument should be kept in the right hand, while the left hand holds prolonged and curved instruments, such as curved forceps and suction tools, to expose the targeted structures (*Figure 5*). Differences in the length of instruments and the space between them facilitate intraoperative procedures and ensure ideal vision. Third, close collaboration of the

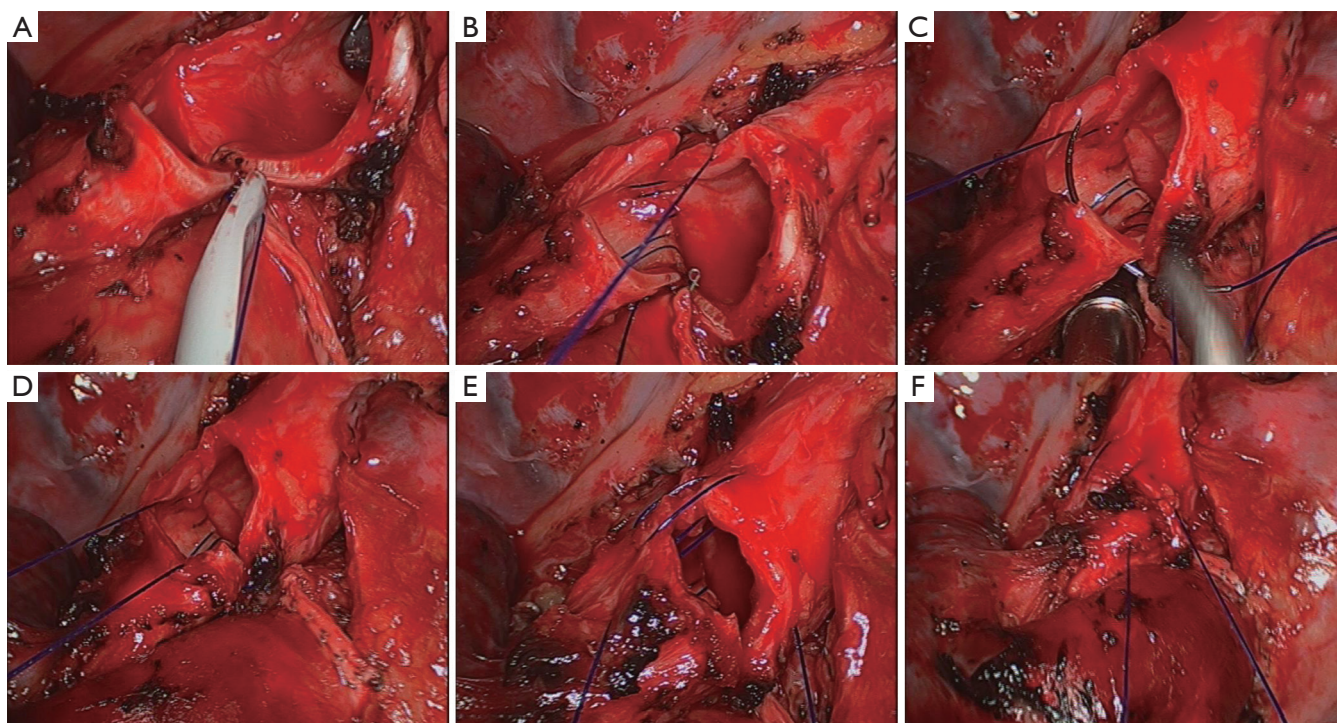


Figure 3 Detailed steps of Chen's technique. (A) A first stitch was made on the posterior bronchial wall and knot made outside the lumen; (B) the deeper posterior quarter of the circumference was continuously sutured; (C) the superficial posterior quarter was sutured; (D) the tension of the thread was adjusted before suturing the other three quarters; (E) the anterior wall was continuously sutured in the same way; (F) making a final knot outside the lumen.



Figure 4 Location of the drainage tubes. A 28-F drainage tube was placed at the incision, and a central venous catheter was placed in the seventh or eighth intercostal space on the posterior axillary line.

camera holder. An experienced camera holder is crucial for successful single-port VATS. In some reports, the surgeon and camera holder stand at the same side in front of the patient (10,19,20). In our institution, the camera holder routinely stands at the back of the patient, because we have found that staying at the same side can limit the movement

of the surgeon and result in discomfort during the procedure. This step requires the camera holder to adapt a reverse-operational approach when performing subcarinal lymph node dissection, inferior pulmonary ligament separation, and other procedures near the diaphragm. The camera holder should keep the camera at the posterior edge of the incision and parallel to the surgeon's instruments to prevent interference. Furthermore, the camera needs to be held by one hand on the base of the camera and the other hand near the incision to maintain steady vision (*Figure 6*).

Bronchial anastomosis is the most complex procedure in SL. A modified method developed by the author, historically applied in three-port VATS bronchial anastomosis (13), was introduced to our single-port approach. We summarize the characteristics of this technique as follows. First, the whole process of anastomosis was finished with continuous suture, which is considered time saving and technically simple owing to the tying of fewer knots (22). Moreover, continuous suturing reduced suture twisting, which is paramount in single-port VATS where visual angle is limited. Second, the deeply located and poorly exposed

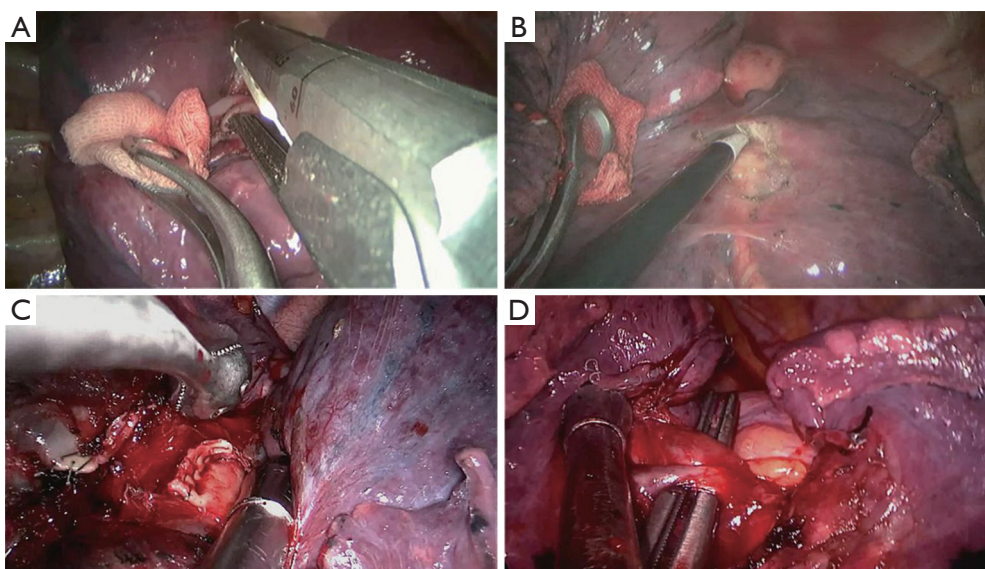


Figure 5 Combined application of conventional straight instrument and prolonged curved instruments creates sufficient operating space when performing single-port VATS. VATS, video-assisted thoracoscopic surgery.



Figure 6 The camera holder maintains steady operating vision by holding one hand on the base of the camera and the other hand near the incision.

posterior wall was sutured first to reduce the tension at both ends, after which the anterior wall was sutured with the posterior wall visualized on the monitor. Good exposure of the posterior bronchial wall ensures the safety of the procedure. Third, proper adjustment of anastomosis tension was performed twice during the procedure. Deft suturing with 3-0 prolene can facilitate effective regulation of anastomosis tension and avoid anastomotic complications. In the present study, no anastomotic complications were observed up to the last follow-up, which proved the safety of this technique and potentially broadens its application range.

In conclusion, with accumulation of experience and improvements in instruments and surgical procedure in

single-port VATS, it is feasible and safe to perform SL and systematic ML using a uniportal VATS approach. Application of Chen's technique in bronchial anastomosis is easy and reliable, and leads to a satisfactory short-term clinical outcome.

Acknowledgements

None.

Footnote

Conflicts of Interest: The authors have no conflicts of interest to declare.

Ethical Statement: The study was approved by ethics committee of Fujian Medical University Fujian Union Hospital (No. 2014029) and written informed consent was obtained from all patients.

References

1. Ma Z, Dong A, Fan J, et al. Does sleeve lobectomy concomitant with or without pulmonary artery reconstruction (double sleeve) have favorable results for non-small cell lung cancer compared with pneumonectomy? A meta-analysis. *Eur J Cardiothorac Surg* 2007;32:20-8.

2. Ferguson MK, Lehman AG. Sleeve lobectomy or pneumonectomy: optimal management strategy using decision analysis techniques. *Ann Thorac Surg* 2003;76:1782-8.
3. Maurizi G, D'Andrilli A, Anile M, et al. Sleeve lobectomy compared with pneumonectomy after induction therapy for non-small-cell lung cancer. *J Thorac Oncol* 2013;8:637-43.
4. Hanna JM, Berry MF, D'Amico TA. Contraindications of video-assisted thoracoscopic surgical lobectomy and determinants of conversion to open. *J Thorac Dis* 2013;5 Suppl 3:S182-9.
5. McKenna RJ Jr, Houck W, Fuller CB. Video-assisted thoracic surgery lobectomy: experience with 1,100 cases. *Ann Thorac Surg* 2006;81:421-5; discussion 425-6.
6. Mahtabifard A, Fuller CB, McKenna RJ Jr. Video-assisted thoracic surgery sleeve lobectomy: a case series. *Ann Thorac Surg* 2008;85:S729-32.
7. Nakanishi K. Video-assisted thoracic surgery lobectomy with bronchoplasty for lung cancer: initial experience and techniques. *Ann Thorac Surg* 2007;84:191-5.
8. Li Y, Wang J. Video-assisted thoracoscopic surgery sleeve lobectomy with bronchoplasty: an improved operative technique. *Eur J Cardiothorac Surg* 2013;44:1108-12.
9. Agasthian T. Initial experience with video-assisted thoracoscopic bronchoplasty. *Eur J Cardiothorac Surg* 2013;44:616-23.
10. Gonzalez-Rivas D, Fernandez R, Fieira E, et al. Uniportal video-assisted thoracoscopic bronchial sleeve lobectomy: first report. *J Thorac Cardiovasc Surg* 2013;145:1676-7.
11. Gonzalez-Rivas D, Delgado M, Fieira E, et al. Left lower sleeve lobectomy by uniportal video-assisted thoracoscopic approach. *Interact Cardiovasc Thorac Surg* 2014;18:237-9.
12. Zhu Y, Xu G, Zheng B, et al. Single-port video-assisted thoracoscopic surgery lung resection: experiences in Fujian Medical University Union Hospital. *J Thorac Dis* 2015;7:1241-51.
13. Xu G, Zheng W, Guo Z, et al. Complete video-assisted thoracoscopic surgery upper left bronchial sleeve lobectomy. *J Thorac Dis* 2013;5 Suppl 3:S298-300.
14. Gonzalez-Rivas D, Fieira E, Delgado M, et al. Uniportal video-assisted thoracoscopic sleeve lobectomy and other complex resections. *J Thorac Dis* 2014;6:S674-81.
15. Gonzalez-Rivas D, Delgado M, Fieira E, et al. Double sleeve uniportal video-assisted thoracoscopic lobectomy for non-small cell lung cancer. *Ann Cardiothorac Surg* 2014;3:E2.
16. Lyscov A, Obukhova T, Ryabova V, et al. Double-sleeve and carinal resections using the uniportal VATS technique: a single centre experience. *J Thorac Dis* 2016;8:S235-41.
17. Gonzalez-Rivas D. VATS lobectomy: surgical evolution from conventional VATS to uniportal approach. *ScientificWorldJournal* 2012;2012:780842.
18. Gonzalez-Rivas D, Paradela M, Fernandez R, et al. Uniportal video-assisted thoracoscopic lobectomy: two years of experience. *Ann Thorac Surg* 2013;95:426-32.
19. Shen Y, Wang H, Feng M, et al. Single- versus multiple-port thoracoscopic lobectomy for lung cancer: a propensity-matched study†. *Eur J Cardiothorac Surg* 2016;49 Suppl 1:i48-53.
20. Wang BY, Liu CY, Hsu PK, et al. Single-incision versus multiple-incision thoracoscopic lobectomy and segmentectomy: a propensity-matched analysis. *Ann Surg* 2015;261:793-9.
21. Cheng K, Zheng B, Zhang S, et al. Feasibility and learning curve of uniportal video-assisted thoracoscopic segmentectomy. *J Thorac Dis* 2016;8:S229-34.
22. Nakagawa T, Chiba N, Ueda Y, et al. Clinical experience of sleeve lobectomy with bronchoplasty using a continuous absorbable barbed suture. *Gen Thorac Cardiovasc Surg* 2015;63:640-3.

Cite this article as: Chen H, Xu G, Zheng B, Zheng W, Zhu Y, Guo Z, Chen C. Initial experience of single-port video-assisted thoracoscopic surgery sleeve lobectomy and systematic mediastinal lymphadenectomy for non-small-cell lung cancer. *J Thorac Dis* 2016;8(8):2196-2202. doi: 10.21037/jtd.2016.07.89