



Published in final edited form as:

*Mod Pathol.* 2016 September ; 29(9): 985–995. doi:10.1038/modpathol.2016.115.

## Mammary analog secretory carcinoma of the thyroid gland: A primary thyroid adenocarcinoma harboring *ETV6–NTRK3* fusion

Snjezana Dogan<sup>1</sup>, Lu Wang<sup>1</sup>, Ryan N Ptashkin<sup>1</sup>, Robert R Dawson<sup>2</sup>, Jatin P Shah<sup>3</sup>, Eric J Sherman<sup>4</sup>, R Michael Tuttle<sup>4</sup>, James A Fagin<sup>4</sup>, David S Klimstra<sup>1</sup>, Nora Katabi<sup>1</sup>, and Ronald A Ghossein<sup>1</sup>

<sup>1</sup>Department of Pathology, Memorial Sloan Kettering Cancer Center, New York, NY, USA

<sup>2</sup>Department of Pathology, Good Samaritan Hospital, West Islip, NY, USA

<sup>3</sup>Department of Surgery, Memorial Sloan Kettering Cancer Center, New York, NY, USA

<sup>4</sup>Department of Medicine, Memorial Sloan Kettering Cancer Center, New York, NY, USA

### Abstract

*ETV6–NTRK3* fusion was identified in several cancers including the recently described mammary analog secretory carcinoma (MASC) of the salivary glands and a minority of papillary thyroid carcinomas. We describe three cases of primary MASC of the thyroid gland and provide a detailed clinical and pathological characterization of the tumor morphology, immunoprofile, and genetic background. Immunohistochemistry for PAX8, TTF-1, thyroglobulin, mammaglobin, GCDFP-15, S-100 protein, and p63 was used to define the tumor immunophenotype. Fluorescence *in situ* hybridization for *ETV6* rearrangement was performed in three, and the next-generation sequencing assay MSK-IMPACT™ (Memorial Sloan Kettering-Integrated Mutation Profiling of Actionable Cancer Targets) was performed in two cases. Primary MASC of the thyroid occurred in two women and one man, age 47–72 years. All patients presented with high T stage, infiltrative, locally aggressive tumors with extrathyroidal extension. Two cases were associated with well-differentiated papillary thyroid carcinoma. Histologically, they appeared as low-grade tumors, resembling MASC of the salivary glands and labeled positive for mammaglobin, GCDFP-15, S-100 protein, p63, weakly positive for PAX8, and negative for TTF-1 and thyroglobulin. Fluorescence *in situ* hybridization revealed *ETV6* rearrangement in all cases. In two tested cases MSK-IMPACT™ confirmed the presence of *ETV6–NTRK3* gene fusion. Two patients had at least two local recurrences, one was alive with disease, and one was alive and free of disease after 14 and 17 years, respectively. The third patient was alive and free of disease after 2 years. MASC of the thyroid is histologically, immunophenotypically, and genetically similar to its salivary gland counterpart. Thyroid MASC can be associated with a well-differentiated papillary thyroid carcinoma component, supporting follicular cell origin. Clinically, these carcinomas may show frequent recurrences but are associated with long-term survival. Patients with MASC of the thyroid may potentially benefit from Trk molecular-targeted therapy.

---

Correspondence: Dr S Dogan, MD, Department of Pathology Memorial Sloan Kettering Cancer Center, 1275 York Avenue, New York, NY 10065, USA. dogans@mskcc.org.

#### Disclosure/conflict of interest

The authors declare no conflict of interest.

Mammary analog secretory carcinoma (MASC) of the salivary glands was first described by Skálová *et al.*<sup>1</sup> as a carcinoma that markedly resembles secretory carcinoma of the breast at the histological and immunohistochemical levels. Similar to its breast counterpart, MASC harbors a recurrent balanced chromosomal translocation t(12;15)(p13;q25) leading to *ETV6-NTRK3* gene fusion.<sup>1,2</sup> *ETV6-NTRK3* fusion was also detected in several other entities such as infantile fibrosarcoma, congenital mesoblastic nephroma, and acute myeloid leukemia.<sup>3-5</sup> More recently, *ETV6-NTRK3* fusion was found in about 14% of radiation-induced well-differentiated papillary thyroid carcinomas, and in up to 2% of sporadic well-differentiated papillary thyroid carcinomas.<sup>6,7</sup> Aside from mucoepidermoid carcinoma and its variant sclerosing mucoepidermoid carcinoma with eosinophilia, no other primary salivary gland-type tumors of the thyroid have been reported.<sup>8-10</sup> To the best of our knowledge, we describe here the first three cases of a salivary gland-type adenocarcinoma primary to the thyroid harboring *ETV6-NTRK3* fusion and markedly resembling the morphology and immunoprofile of the MASC of the salivary glands.

## Case 1

A 72-year-old woman, a former heavy smoker, without history of radiation exposure or breast cancer underwent total thyroidectomy for a right lobe mass measuring 2.9 cm in greatest dimension, invading the trachea, soft tissue and skeletal muscle of the neck. Microscopically the tumor was infiltrative and was interpreted as ‘moderately differentiated papillary thyroid carcinoma’. The tumor was staged as a T4 N0 M0 (stage III), and the surgical margin was focally positive for tumor. Before her surgery she had an undetectable serum thyroglobulin level and elevated thyroid-stimulating hormone. However, given the high-risk features at presentation, she was subsequently treated with radioactive iodine (Table 1). Over the next 14 years the patient had two recurrences to the soft tissue and skin of the left neck, each time with low or undetectable serum thyroglobulin levels. The first recurrence was interpreted as metastatic papillary thyroid carcinomas, whereas in the second a possibility of a metastasis from ‘a primary salivary gland-type adenocarcinoma originating in the thyroid, in salivary gland rests adjacent to thyroid, or minor salivary glands adjacent to trachea’ was entertained based on extensive diagnostic work-up (Table 2). In the meantime, 1 year after the first recurrence, she was also found to have multiple bilateral lung nodules, which ultimately proved to represent primary lung adenocarcinomas based on immunolabeling for PE10 and the finding of a *KRAS* G12C mutation, which is typically associated with smoking-related lung adenocarcinoma. However, given the lack of aggressive biological features and the overall favorable performance status, no further treatment was indicated at that time and she was not treated for the lung carcinomas. At the last follow-up, the patient was alive without thyroid-related disease 17 years after initial presentation (Table 1).

## Case 2

A 47-year-old man without history of radiation exposure underwent total thyroidectomy with a limited left neck lymph node dissection for a left lobe tumor. The 7.0 cm tumor was replacing the left lobe, showed extrathyroidal extension into perithyroidal fibroadipose tissue and was diagnosed as a ‘well-differentiated papillary thyroid carcinoma with tall cell

features'. Surgical margins were free of tumor and his left neck lymph nodes were positive for metastatic carcinoma with extranodal extension. Over a period of 14 years the thyroid carcinoma recurred locally three times, each time with undetectable serum thyroglobulin levels (Table 1). The first local recurrence was interpreted as metastatic papillary thyroid carcinomas, and when the tumor recurred second time an extensive diagnostic workup was performed suggesting that the primary thyroid tumor might have represented 'a salivary gland-type adenocarcinoma with MASC-like features, originating in the thyroid, in salivary gland rests adjacent to thyroid or minor salivary glands adjacent to trachea' (Table 2). Next time the patient presented with enlarged residual left neck lymph nodes which suggested third recurrence. However, given the potential surgical risk, observation was recommended until the molecular testing confirmed the presence of *ETV6-NTRK3* fusion and he was considered for a clinical trial with Trk inhibitors (Table 1).

### Case 3

A 65-year-old woman without history of radiation exposure or breast cancer underwent total thyroidectomy for an isthmic mass at an outside hospital. There was a 6.5 cm tumor in the isthmus with extrathyroidal extension into perithyroidal fibroadipose tissue and tracheal invasion. The surgical margin was positive for tumor. The tumor was initially interpreted as a 'poorly differentiated carcinoma, favor papillary thyroid carcinoma' and the patient was treated with post-operative radioactive iodine (Table 1). However, given the unusual morphology, the pathology slides were sent to a head and neck pathology consultant who made a diagnosis of 'metastatic papillary ductal carcinoma consistent with breast origin' being in 'association with papillary carcinoma'. Subsequently, they were reviewed and worked-up by ancillary studies at our institution and the diagnosis of MASC of the thyroid was rendered (Table 2). At the last follow-up the patient was alive with no evidence of disease by imaging 2 years after diagnosis.

## Materials and methods

### Immunohistochemistry

Immunohistochemistry was performed using the standard streptavidin-biotin-peroxidase procedure with the Ventana system according to the manufacturer's recommendations (Ventana medical systems, Tucson, AZ, USA). Appropriate positive and negative controls were used for each antibody. The details on the antibodies used are summarized in Table 3.

### Fluorescence *In Situ* Hybridization

Formalin-fixed paraffin-embedded tissue samples were tested for *ETV6* rearrangements using a break-apart fluorescence *in situ* hybridization assay with a commercial *ETV6* break-apart FISH probe (Abbott Molecular, USA). Four-micrometer tissue sections generated from formalin-fixed paraffin-embedded blocks of tumor specimens were pretreated by deparaffinizing in xylene and dehydrating in ethanol. Dual-color fluorescence *in situ* hybridization assay was conducted according to the protocol for formalin-fixed paraffin-embedded sections from Vysis/Abbott Molecular. Fluorescence *in situ* hybridization analysis and signal capture were conducted on a fluorescence microscope.

(Zeiss, Jena, Germany) coupled with ISIS fluorescence *in situ* hybridization Imaging System (Metasystems, Heidelberg, Germany). We analyzed 100 interphase nuclei from each tumor specimen.

### DNA Extraction and Exon Capture Next-Generation Sequencing (MSK-IMPACT™)

Tumors were profiled for genomic alterations in 410 key cancer-associated genes using our deep sequencing MSK-IMPACT™ (Memorial Sloan Kettering-Integrated Mutation Profiling of Actionable Cancer Targets) assay. Custom DNA probes were designed for targeted sequencing of all exons and selected introns of 410 oncogenes, tumor suppressor genes, and members of pathways deemed actionable by targeted therapies. Genomic DNA from tumor- and patient-matched normal samples was extracted on a Hamilton Chemagic workstation using formalin-fixed paraffin-embedded tissue DNA and DNA Blood kits (Perkin Elmer, Waltham, MA, USA), respectively. Genomic DNA was sheared using the Covaris E200 instrument (Covaris, Woburn, MA, USA) then subjected to sequence library preparation (Kapa Biosystems) and exon capture (NimbleGen). Barcoded sequence libraries were pooled at equimolar concentrations and input into a single exon capture reaction, as previously described.<sup>11,12</sup> Pooled libraries containing captured DNA fragments were subsequently sequenced on the Illumina HiSeq 2500 system as  $2 \times 100$  bp paired-end reads. Samples were subjected to a series of computational quality control steps to ensure genomic concordance between tumor and normal samples from the same patient, detect the presence of tumor DNA in the normal sample, and monitor contamination involving DNA from different patients. Paired sample variant calling was performed on tumor samples and their respective matched normals to identify point mutations/single-nucleotide variants and small insertions/deletions. Annotated single-nucleotide variants and insertions/deletions calls were subjected to a series of filtering steps to ensure only high-confidence calls were admitted to the final step of manual review.<sup>11,13</sup> Copy-number aberrations were identified by comparing sequence coverage of targeted regions in a tumor sample relative to a standard diploid normal sample.<sup>11</sup> DELLY version 0.6.1 was used for the identification of somatic structural variants from tumor and matched normal read-pair data, as previously described.<sup>11,14</sup>

## Results

### Microscopic Features and Immunohistochemistry

All three tumors were large, infiltrative, and had extrathyroidal extension. They were comprised of lobules, variably-sized nests, cords, and tubules separated by dense collagenous stroma. Within the lobules and nests, tumor cells formed microcystic areas or were multilayered forming bridges, cribriform structures, true papillae as well as pseudopapillae/micropapillae. The latter lacked distinct fibrovascular cores and formed cleft-like spaces. Cytological features greatly overlapped with those usually seen in well-differentiated papillary thyroid carcinoma. However, in comparison to well-differentiated papillary thyroid carcinoma, adenocarcinoma/MASC cells were mostly evenly spaced, showed denser eosinophilic or vacuolated cytoplasm, mainly smooth nuclear membranes, open to finely coarse chromatin, and conspicuous to prominent nucleoli (Figure 1). Nuclear features of papillary thyroid carcinoma such as nuclear membrane irregularities and grooves were subtle and focally present in each case, and rare nuclear pseudoinclusions were

identified only in Case 2 and in both tumor components. High-grade tumor features such as an increased mitotic count or tumor necrosis were not identified. The proliferation index based on Ki-67 immunohistochemistry ranged from <1 to 7%. In cases containing a minor well-differentiated papillary thyroid carcinoma component, scant colloid was present; but for the most part, secretions were scanty, dense and eosinophilic and admixed with cellular debris. The adjacent benign thyroid parenchyma showed chronic lymphocytic thyroiditis in each of the three cases. In Cases 2 and 3 there was a well-differentiated papillary thyroid carcinoma component closely associated with the adenocarcinoma/MASC part of the tumor (Figures 2 and 3). In Case 2, it was a classic well-differentiated papillary thyroid carcinoma component. However, no well-differentiated papillary thyroid carcinoma part was identified in either of the subsequent metastases in Case 2. In Case 3 the well-differentiated papillary thyroid carcinoma was the follicular variant. In both instances, the immunohistochemical work-up confirmed the morphological impression, showing distinct immunoprofiles of each respective tumor component (Table 2). No well-differentiated papillary thyroid carcinoma component was found in Case 1. All adenocarcinoma/MASC components were positive for mammaglobin, GCDFP-15, S-100 protein, p63 (focally), and weakly positive for PAX8, whereas negative for TTF-1 and thyroglobulin. The associated well-differentiated papillary thyroid carcinoma components showed essentially the inverse staining pattern (eg, TTF-1 and thyroglobulin positivity) with the exception of PAX8 that was positive in both tumor components but was notably stronger in well-differentiated papillary thyroid carcinoma than in adenocarcinoma/MASC (Table 2).

### Cytogenetics

Fluorescence *in situ* hybridization was performed on all three cases, revealing *ETV6* rearrangement in 65, 83 and 83% tumor cells, respectively (Table 2). Importantly, in Cases 2 and 3, the *ETV6* rearrangement was detected in both adenocarcinoma/MASC and well-differentiated papillary thyroid carcinoma component, further supporting them being components of the same tumor and having common cell of origin (Figure 2).

### Molecular Profile

The last recurrence of Case 1 and primary tumor and two recurrences of Case 2 were subjected to MSK-IMPACT. In each tested sample, a balanced rearrangement t(12;15) (p13.2;q25.3) was identified resulting in an *ETV6-NTRK3* fusion transcript where exons 1–4 of *ETV6* were fused with exons 14–20 of *NTRK3* (Figure 2). Additional mutations involving *ETV6*, *KDM5C*, and *PPP2R1A* genes were identified in Case 1 at 32, 28, and 2% variant frequencies, respectively (Table 2). In the primary tumor of Case 2 in addition to the oncogenic *ETV6-NTRK3* fusion three other somatic single-nucleotide variants were detected at low variant frequencies (5%; Table 2).

### Discussion

MASC of the salivary glands, recently described and distinguished from acinic cell carcinoma, is histologically characterized by uniform cells with vesicular nuclei and eosinophilic vacuolated cytoplasm, arranged in tubular, microcystic, and solid growth patterns often divided by dense fibrous septa, and with abundant PAS-positive colloid-like

secretory material. MASC is typically positive for S-100 protein, mammaglobin, vimentin, and cytokeratins, namely CK7 and CK19, and can be focally positive for p63. Similar to its breast counterpart, MASC harbors a recurrent balanced chromosomal translocation t(12;15) (p13;q25) leading to *ETV6-NTRK3* gene fusion.<sup>1,15</sup> Most of the reported cases showed the behavior of a low-grade adenocarcinoma, with about 15% recurrence rate and 15% rate of lymph node metastases.<sup>16</sup>

Here, we report three cases of primary adenocarcinomas of thyroid gland occurring in two women and one man, age 47–72 years (average 61 years). There was no history of radiation exposure in any patient. All three patients presented with a high T stage, infiltrative, locally aggressive tumors with extrathyroidal extension, arising in a background of chronic lymphocytic thyroiditis. In two cases, a well-differentiated papillary thyroid carcinoma was present as a minor tumor component, whereas one case was entirely comprised of adenocarcinoma. Histologically, they appeared to be of low-grade, resembling MASC of salivary gland and its breast counterpart.<sup>1,17,18</sup> Although immunoreactivity for S-100 protein and mammaglobin were compatible with a salivary gland/breast-like phenotype, positive labeling for PAX8, a marker of thyroid lineage, supported these tumors to represent primary thyroid carcinomas and not metastases from a primary salivary gland or breast carcinoma.<sup>19–22</sup> Importantly, similar to MASC of salivary gland, the *ETV6* gene rearrangement was detected by fluorescence *in situ* hybridization in all three tumors, and the presence of the *ETV6-NTRK3* fusion product was subsequently confirmed by next-generation sequencing assay in two tested cases. Therefore, based on the above findings and the lack of salivary gland and breast involvement in these patients, we propose these carcinomas to represent primary MASCs of the thyroid gland, a previously unrecognized entity. Recently, in their series of MASC of salivary gland Stevens *et al.*<sup>23</sup> reported a case of 55-year-old woman with MASC involving the thyroid and extending into the adjacent perilyngeal soft tissues. The authors suggested ectopic salivary glands as a primary site of origin. Although this still remains a possibility, based on our current experience we believe that this previously described case would likely represent another example of primary MASC of the thyroid gland.

*ETV6-NTRK3* fusion was recently reported to be present in about 14% of radiation-induced well-differentiated papillary thyroid carcinoma, and in up to 2% sporadic well-differentiated papillary thyroid carcinoma. Among sporadic cases, classical type and follicular variants were described.<sup>6,7</sup> Two of our cases showed a minor well-differentiated papillary thyroid carcinoma component. In Case 2, well-differentiated papillary thyroid carcinoma was of the classical type, and in Case 3 it was follicular variant papillary thyroid carcinoma (Figure 3). Detection of *ETV6* rearrangement in both, the MASC-like and well-differentiated papillary thyroid carcinoma tumor elements is supportive of both components belonging to the same neoplastic process and having a common cell of origin. Given the histological evidence of a smooth transition from one phenotype to another ie, from well-differentiated papillary thyroid carcinoma to MASC-like tumor (best seen in Case 3, Figure 3) and the finding of PAX8 expression in both components, these thyroid MASCs likely represent a thyroid carcinoma of follicular cell origin, ie, a well-differentiated papillary thyroid carcinoma that underwent divergent differentiation into another tumor type. In Case 1 no well-differentiated papillary thyroid carcinoma component was identified and the serum thyroglobulin was

undetectable at first presentation consistent with the absence of the thyroglobulin-producing tumor component. Therefore, based on our findings and in view of the prior reports of *ETV6* rearranged well-differentiated papillary thyroid carcinoma, we suggest that primary *ETV6-NTRK3*-driven thyroid carcinomas may not just represent a molecular subtype of well-differentiated papillary thyroid carcinoma but would also include a salivary gland-like adenocarcinoma with or without associated well-differentiated papillary thyroid carcinoma component. We propose that these carcinomas should be primarily viewed as MASC of the thyroid gland for the following reasons: (1) morphologically, the well-differentiated papillary thyroid carcinoma component was minor in Cases 2 and 3, and was completely absent in Case 1; (2) clinically, these carcinomas did not behave as well-differentiated papillary thyroid carcinoma but rather as low-grade salivary gland-type adenocarcinomas; (3) thyroglobulin levels were undetectable at the time of histologically confirmed recurrence in Cases 1 and 2; and (4) thyrogen-stimulated assays were negative in both Case 1 and 2.

Despite the multiple recurrences in both Case 1 and 2, both patients were alive after 17 and 14 years, respectively, and the third patient was alive and free of disease after 2 years. These clinical features suggest a relatively indolent clinical behavior even in the absence of an effective systemic treatment. However, the presence of an *ETV6-NTRK3* fusion protein as a molecular target could expand the treatment options for patients with systemic disease. Recently we reported a case of metastatic MASC of the salivary gland with a positive response to the pan-Trk inhibitor entrectinib.<sup>24</sup> These findings could provide a rationale for taking a similar approach in patients with the MASC of the thyroid presenting with metastatic or recurrent disease.

Distinguishing MASC from well-differentiated papillary thyroid carcinoma can be very challenging, particularly from the one harboring the *ETV6-NTRK3* fusion. Given the marked morphologic and genetic similarity between well-differentiated papillary thyroid carcinoma and MASC we believe that the diagnosis of MASC needs to be strongly considered if the *ETV6* rearrangement is detected in a thyroid tumor with papillary morphology and especially in patients without history of radiation exposure. Aside from well-differentiated papillary thyroid carcinoma, the differential diagnosis may include poorly differentiated thyroid carcinoma, metastatic breast carcinoma, or metastatic MASC of the salivary gland. Poorly differentiated thyroid carcinoma requires detection of at least 5 mitoses per 10 high-power fields and/or tumor necrosis in the setting of TTF-1 and thyroglobulin positivity.<sup>25</sup> However, although our cases exhibited histologic features of a low-grade carcinoma, we cannot completely exclude the possibility that there are high-grade primary MASCs of the thyroid, similar to such cases seen in the salivary glands.<sup>24,26</sup> Therefore increased mitotic activity or tumor necrosis by themselves may not necessarily exclude MASC in thyroid. Despite the marked morphological overlap between well-differentiated papillary thyroid carcinoma and primary MASC of thyroid, especially at cytologic level, features such as multilayered tufting tumor epithelium with bridges, cribriforming, microcystic areas, psuedopapillae/micropapillae and relatively evenly spaced nuclei with conspicuous to prominent nucleoli may raise a possibility of MASC arising in the thyroid gland. This should prompt an initial immunohistochemical work-up with thyroglobulin and mammaglobin, and if appropriate, an addition of immunostains for TTF-1, PAX8, and S-100 protein. A positive PAX8 immunostain and no clinical history of breast or

salivary gland primary tumor may be sufficient to rule out salivary gland and breast carcinoma metastasis. Finally, detection of *ETV6-NTRK3* fusion transcript would not only support the diagnosis but may become essential if further management with Trk inhibitors is considered. Our study shows that MASC of the thyroid gland is not a thyroglobulin-producing tumor, and in the setting of metastatic disease these patients are unlikely to respond to radioactive iodine therapy.

In addition to the oncogenic *ETV6-NTRK3* fusion, targeted next-generation sequencing of the two cases revealed a few additional genetic events in each case suggesting a relatively 'quiet' tumor genome. A comprehensive sequential mutation profiling of the primary tumor and the subsequent recurrences may help elucidate the genetic background associated with intratumoral heterogeneity and tumor progression. All three single-nucleotide variants *APC* R640W, *HNF1A* E619K, and *SYK* R22Q co-occurring with the *ETV6-NTRK3* in Case 2 were present at low variant frequencies in the primary tumor sample and were absent in subsequent recurrences where the *ETV6-NTRK3* fusion was the only detected genetic alteration. These findings suggest that these additional genetic alterations were likely subclonal events present only in a minor subpopulation of the tumor cells. In addition, their absence in the subsequent metastases suggests these single-nucleotide variants unlikely to be functionally significant or associated with the tumor recurrence and progression. This further emphasizes the oncogenic role of the *ETV6-NTRK3* fusion gene in this tumor type. Similarly, in Case 1 detection of *PPP2R1A* R182W at only 2% variant frequency also favors a subclonal mutation. Interestingly, in Case 1 in addition to the rearrangement *ETV6* gene was also affected by a somatic P214L mutation. Although the *ETV6* P214L and *KDM5C* G496R were both present at relatively high variant frequencies consistent with their presence in the majority of tumor cells, their potential functional significance remains uncertain at this point.

## Conclusion

Here, we report three cases of primary MASC of the thyroid gland occurring in middle-aged patients. All three cases were found to harbor *ETV6* rearrangement and two tested cases were confirmed to harbor the *ETV6-NTRK3* gene fusion. In addition to the *ETV6-NTRK3* these tumors were characterized by a few additional somatic genetic alterations suggesting a relatively 'quiet' tumor genome. Histologically, MASC of thyroid appears to be a low-grade tumor that can be associated with a well-differentiated papillary thyroid carcinoma component. Clinically, these tumors showed frequent recurrences but long-term survival. Pathologists should be aware of MASC in thyroid, and where the morphological features suggest so, ancillary studies including molecular testing for *ETV6-NTRK3* rearrangement should be performed. In the appropriate clinical setting, patients with MASC of the thyroid gland may potentially benefit from pan-Trk Trk molecular-targeted therapy.

## Acknowledgments

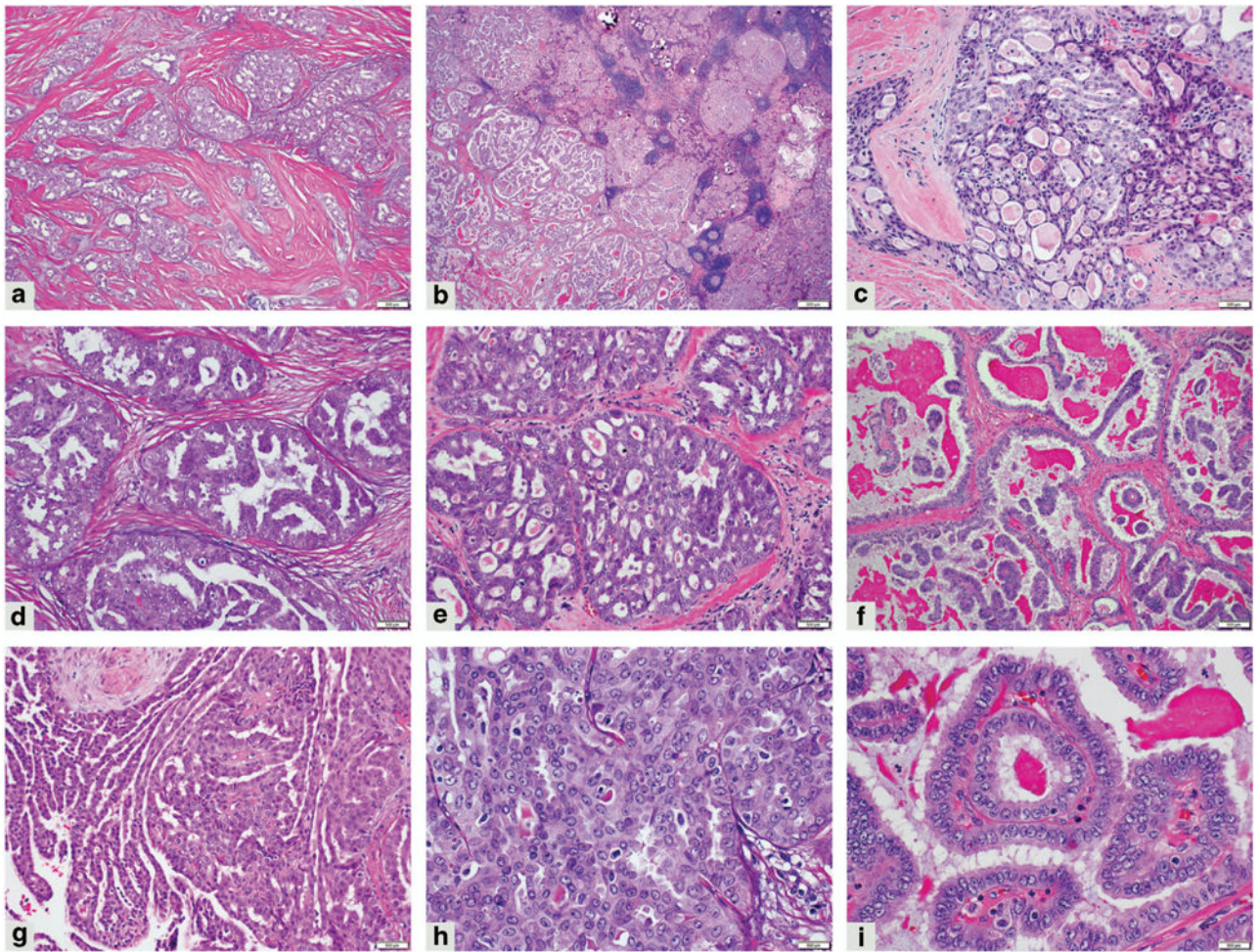
We thank Allyne Manzo, our expert photographer from the Department of Pathology, MSKCC for her assistance in arranging the microphotographs. Research reported in this publication was supported in part by the Cancer Center Support Grant of the National Institutes of Health/National Cancer Institute under award number P30CA008748. The content is solely the responsibility of the authors and does not necessarily represent the official views of the National Institutes of Health.



## References

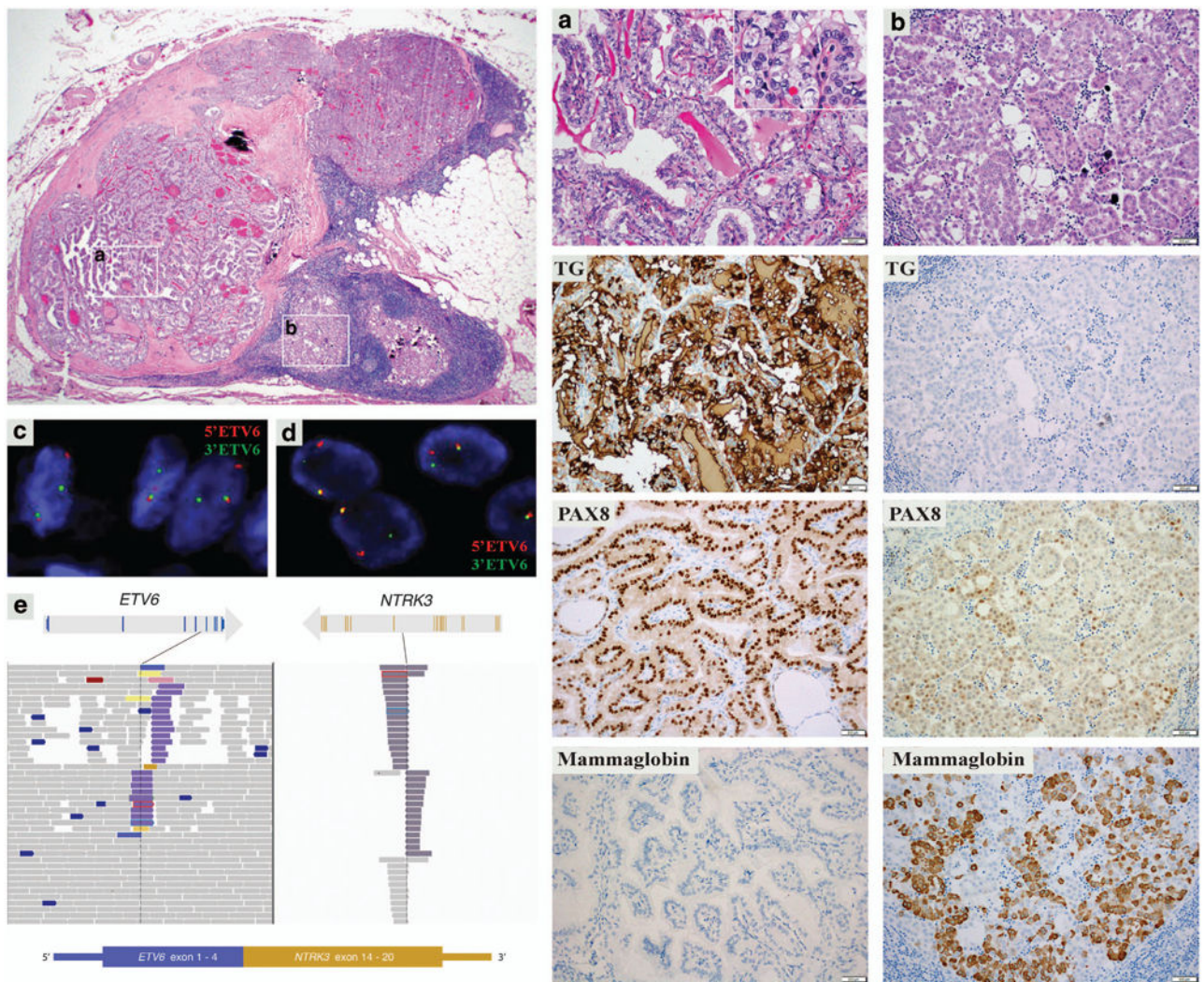
1. Skálová A, Vanecek T, Sima R, et al. Mammary analogue secretory carcinoma of salivary glands, containing the ETV6-NTRK3 fusion gene: a hitherto undescribed salivary gland tumor entity. *Am J Surg Pathol.* 2010; 34:599–608. [PubMed: 20410810]
2. Tognon C, Knezevich SR, Huntsman D, et al. Expression of the ETV6-NTRK3 gene fusion as a primary event in human secretory breast carcinoma. *Cancer Cell.* 2002; 2:367–376. [PubMed: 12450792]
3. Knezevich SR, McFadden DE, Tao W, et al. A novel ETV6-NTRK3 gene fusion in congenital fibrosarcoma. *Nat Genet.* 1998; 18:184–187. [PubMed: 9462753]
4. Rubin BP, Chen CJ, Morgan TW, et al. Congenital mesoblastic nephroma t(12;15) is associated with ETV6-NTRK3 gene fusion: cytogenetic and molecular relationship to congenital (infantile) fibrosarcoma. *Am J Pathol.* 1998; 153:1451–1458. [PubMed: 9811336]
5. Eguchi M, Eguchi-Ishimae M, Tojo A, et al. Fusion of ETV6 to neurotrophin-3 receptor TRKC in acute myeloid leukemia with t(12;15)(p13;q25). *Blood.* 1999; 93:1355–1363. [PubMed: 9949179]
6. Leeman-Neill RJ, Kelly LM, Liu P, et al. ETV6-NTRK3 is a common chromosomal rearrangement in radiation-associated thyroid cancer. *Cancer.* 2014; 120:799–807. [PubMed: 24327398]
7. Cancer Genome Atlas Research N. Integrated genomic characterization of papillary thyroid carcinoma. *Cell.* 2014; 159:676–690. [PubMed: 25417114]
8. Rhatigan RM, Roque JL, Bucher RL. Mucoepidermoid carcinoma of the thyroid gland. *Cancer.* 1977; 39:210–214. [PubMed: 832236]
9. Chan JK, Albores-Saavedra J, Battifora H, et al. Sclerosing mucoepidermoid thyroid carcinoma with eosinophilia. A distinctive low-grade malignancy arising from the metaplastic follicles of Hashimoto's thyroiditis. *Am J Surg Pathol.* 1991; 15:438–448. [PubMed: 2035738]
10. Sim SJ, Ro JY, Ordóñez NG, et al. Sclerosing mucoepidermoid carcinoma with eosinophilia of the thyroid: report of two patients, one with distant metastasis, and review of the literature. *Hum Pathol.* 1997; 28:1091–1096. [PubMed: 9308735]
11. Cheng DT, Mitchell TN, Zehir A, et al. MSK-IMPACT: a hybridization capture-based next generation sequencing clinical assay for solid tumor molecular oncology. *J Mol Diagn.* 2015; 17:251–264. [PubMed: 25801821]
12. Won HH, Scott SN, Brannon AR, et al. Detecting somatic genetic alterations in tumor specimens by exon capture and massively parallel sequencing. *J Vis Exp.* 2013; 80:e50710. [PubMed: 24192750]
13. Robinson JT, Thorvaldsdóttir H, Winckler W, et al. Integrative genomics viewer. *Nat Biotechnol.* 2011; 29:24–26. [PubMed: 21221095]
14. Rausch T, Zichner T, Schlattl A, et al. DELLY: structural variant discovery by integrated paired-end and split-read analysis. *Bioinformatics.* 2012; 28:i333–i339. [PubMed: 22962449]
15. Skálová A. Mammary analogue secretory carcinoma of salivary gland origin: an update and expanded morphologic and immunohistochemical spectrum of recently described entity. *Head Neck Pathol.* 2013; 7(Suppl 1):30–36.
16. Balanzá R, Arrangoiz R, Cordera F, et al. Mammary analog secretory carcinoma of the parotid gland: a case report and literature review. *Int J Surg Case Rep.* 2015; 16:187–191. [PubMed: 26496413]
17. Chiosea SI, Griffith C, Assaad S, et al. Clinicopathological characterization of mammary analogue secretory carcinoma of salivary glands. *Histopathology.* 2012; 61:387–394. [PubMed: 22372712]
18. Bishop J, Yonescu R, Bastista D, et al. Most non-parotid actinic cell carcinomas represent mammary analog secretory carcinomas. *Am J Surg Pathol.* 2013; 37:1053–1057. [PubMed: 23681074]
19. Bhargava R, Beriwal S, Dabbs DJ. Mammaglobin vs GCDFP-15: an immunohistologic validation survey for sensitivity and specificity. *Am J Clin Pathol.* 2007; 127:103–113. [PubMed: 17145637]
20. Fabbro D, Di Loreto C, Beltrami CA, et al. Expression of thyroid-specific transcription factors TTF-1 and PAX-8 in human thyroid neoplasms. *Cancer Res.* 1994; 54:4744–4749. [PubMed: 8062273]

21. Ros P, Rossi DL, Acebrón A, et al. Thyroid-specific gene expression in the multi-step process of thyroid carcinogenesis. *Biochimie*. 1999; 81:389–396. [PubMed: 10401674]
22. Nonaka D, Tang Y, Chiriboga L, et al. Diagnostic utility of thyroid transcription factors Pax8 and TTF-2 (FoxE1) in thyroid epithelial neoplasms. *Mod Pathol*. 2008; 21:192–200. [PubMed: 18084247]
23. Stevens TM, Kovalovsky AO, Velosa C, et al. Mammary analog secretory carcinoma, low-grade salivary duct carcinoma, and mimickers: a comparative study. *Mod Pathol*. 2015; 28:1084–1100. [PubMed: 26089091]
24. Drilon A, Li G, Dogan S, et al. What hides behind the MASC: clinical response and acquired resistance to entrectinib after ETV6-NTRK3 identification in a mammary analogue secretory carcinoma (MASC). *Ann Oncol*. 2016; 27:920–926. [PubMed: 26884591]
25. Hiltzik D, Carlson DL, Tuttle RM, et al. Poorly differentiated thyroid carcinomas defined on the basis of mitosis and necrosis: a clinicopathologic study of 58 patients. *Cancer*. 2006; 106:1286–1295. [PubMed: 16470605]
26. Skálová A, Vanecek T, Majewska H, et al. Mammary-analogue secretory carcinoma of salivary glands with high-grade transformation: report of 3 cases with the ETV6-NTRK3 gene fusion and analysis of TP53, beta-catenin, EGFR, and CCND1 genes. *Am J Surg Pathol*. 2014; 38:23–33. [PubMed: 24145651]

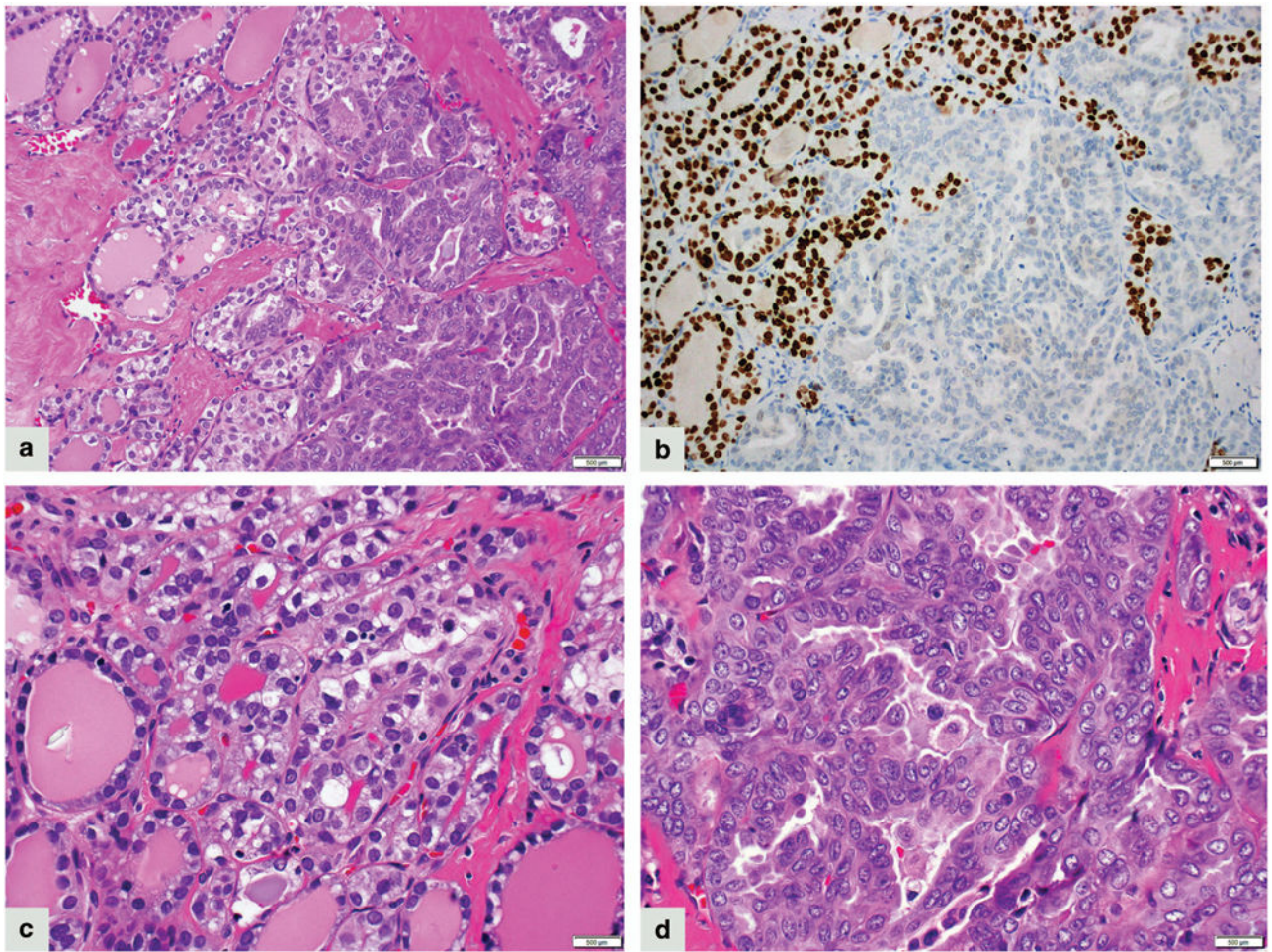


**Figure 1.**

Morphology of mammary analog secretory carcinoma of the thyroid. Lobules, nests, and cords are divided by dense collagenous stroma (**a**) (100 × magnification); chronic lymphocytic thyroiditis in the background (**b**) (20 × magnification); microcystic areas (**c**); multilayered epithelium forming bridges (**d**); cribriform structures (**e**) ((**c–e**), 200 × magnification); true papillae in cystic spaces and with associated dense eosinophilic secretions (**f**) (100× magnification); pseudopapillae/micropapillae with cleft-like spaces (**g**) (200 × magnification); tumor cells with eosinophilic cytoplasm, enlarged nuclei with little overlapping, clear to finely clumped/coarse chromatin and prominent nucleoli (**h,i**) (400 × magnification).



**Figure 2.** Case 2. A perithyroidal lymph node metastasis with well-differentiated papillary thyroid carcinoma (**a**) and mammary analog secretory carcinoma (**b**) tumor components (left upper; 40 × magnification). Right side panel: well-differentiated papillary thyroid carcinoma component (column A, 200 × magnification; with papillary thyroid carcinoma papillary thyroid carcinoma nuclear features, H&E inset, 400 × magnification) stained positive for thyroglobulin (TG), PAX8, and negative for mammaglobin, and mammary analog secretory carcinoma component (column B, 200 × magnification) stained negative for TG, weakly positive for PAX8, and positive for mammaglobin. Both tumor components show *ETV6* rearrangement by fluorescence *in situ* hybridization (well-differentiated papillary thyroid carcinoma) (**c**) and, mammary analog secretory carcinoma (**d**). MSK-IMPACT assay: exons 1–4 of *ETV6* gene are fused with the exons 14–20 of *NTRK3* gene resulting in *ETV6-NTRK3* fusion transcript (**e**).



**Figure 3.**

Case 3. A smooth transition between well-differentiated papillary thyroid carcinoma, follicular variant (left side) and mammary analog secretory carcinoma component (right side) (a) (200 × magnification); TTF-1 immunostain is positive in well-differentiated papillary thyroid carcinoma (left side) and negative in mammary analog secretory carcinoma component (right side) (b) (200 × magnification). Papillary thyroid carcinoma is composed of colloid-filled follicles and tumor cells show pale eosinophilic cytoplasm, enlarged nuclei with irregular nuclear membranes, open chromatin and absent to inconspicuous nucleoli (c) (400 × magnification). The transition to the mammary analog secretory carcinoma phenotype is characterized by lack of colloid, denser eosinophilic cytoplasm, enlarged nuclei with open chromatin, and conspicuous to prominent nucleoli (d) (400 × magnification).

**Table 1**

Clinical course

		<i>Follow-up (time since initial presentation)</i>				
		<i>Primary tumor</i>				
<i>Case 1</i>	<i>Initial presentation</i>	<i>First recurrence (7 years)</i>	<i>Second non-thyroid primary (8 years)</i>	<i>Second recurrence (14 years)</i>	<i>Last follow-up (17 years)</i>	
Clinical presentation	2.9 cm Right thyroid mass with ETE and tracheal invasion	0.7 cm Right neck subcutaneous/soft tissue nodule	Bilateral lung nodules; the largest 2.6 cm (RUL)	0.3 cm and 0.4 cm Right neck subcutaneous/soft tissue nodules	NED-thyroid related; enlarging lung nodules	
Laboratory tests	Undetectable serum TG; elevated serum TSH (88.05 microU/ml)	Low serum TG (0.4 µg/l); negative thyrogen-stimulated TG assay	Undetectable serum TG	Undetectable serum TG	Undetectable serum TG	
Original pathologic diagnosis	Moderately differentiated PTC	Metastatic PTC	Metastatic adenocarcinoma, favor primary pulmonary origin	Metastatic carcinoma of probable salivary gland origin arising in salivary gland rests adjacent to thyroid or minor salivary glands adjacent to trachea	Adenocarcinoma of lung, bilateral, right (6.6 cm) and left (1.8 cm) lung (second primary tumor)	
Revised pathologic diagnosis	MASC of thyroid	Metastatic MASC of thyroid	Metastatic adenocarcinoma, favor primary pulmonary origin	Metastatic MASC of thyroid	Adenocarcinoma of lung, bilateral, right (6.6 cm) and left (1.8 cm) lung (second primary tumor)	
Stage	T4 N0 MX					
Treatment	Total thyroidectomy and RAI (200 mCi), THRT	Surgical excision, THRT	Close observation and follow-up with CT scan, THRT	Surgical excision, THRT	SBRT for lung adenocarcinoma, THRT	
<i>Case 2</i>	<i>Initial presentation</i>	<i>First recurrence (4 years)</i>	<i>Second recurrence (13 years)</i>	<i>Third recurrence (14 year)</i>	<i>Last follow-up (14 years 10 months)</i>	
Clinical presentation	7.0 cm Left thyroid mass with ETE and enlarged left neck LN	Enlarged residual left neck LN	2.1 cm Left neck subcutaneous/soft tissue nodule (FDG avid/PET positive)	Enlarging residual left neck LN	AWD; Enlarged residual left neck LN	
Laboratory tests	Low serum TG	Undetectable serum TG, negative Thyrogen-stimulated TG assay, negative RAI scan	Undetectable serum TG	Undetectable serum TG	Undetectable serum TG	
Original pathologic diagnosis	Well-differentiated PTC with tall cell features; metastatic carcinoma to 6 of 23 LN, with ENE	Metastatic PTC with tall cell features, in 14 of 50 LN, with ENE	Metastatic carcinoma, similar to prior thyroid carcinoma, possibly of salivary gland origin, with MASC-like features	NA	NA	
Revised pathologic diagnosis	MASC of thyroid	Metastatic MASC of thyroid	Metastatic MASC of thyroid	NA	NA	
Stage	T3 N1B MX					

<b>Case 2</b>	<b>Initial presentation</b>	<b>First recurrence (4 years)</b>	<b>Second recurrence (13 years)</b>	<b>Third recurrence (14 year)</b>	<b>Last follow-up (14 years 10 months)</b>
Treatment	Total thyroidectomy with limited left neck LN dissection. RAI (200 mCi); THRT	Modified left neck LN dissection; EBRT (6300 cGy); THRT	Surgical excision, THRT	Observation, THRT	Considered for clinical trial with NTRK3 inhibitor, THRT
<b>Case 3</b>	<b>Initial presentation</b>				<b>Last follow-up (2 years)</b>
Clinical presentation	6.5 cm Isthmic thyroid mass with ETE and tracheal invasion				NED
Laboratory tests	NA				NA
Original pathologic diagnosis	Outside pathologist #1: Poorly differentiated carcinoma, favor PTC; Outside pathologist #2: Metastatic papillary ductal carcinoma consistent with breast origin, associated with PTC; MSKCC pathologist: MASC probably arising from salivary gland rests in the perithyroid tissue colliding with an infiltrative PTC; follicular variant				NA
Revised pathologic diagnosis	MASC of thyroid				NA
Stage	T4 N0 MX				NA
Treatment	Total thyroidectomy; RAI, THRT, IMRT (6 months post operative)				THRT

AWD, alive with disease; EBRT, external beam radiation therapy; ENE, extranodal extension; ETE, extrathyroid extension; IMRT, intensity modulated radiation therapy; LN, lymph nodes; MASC, mammary analog secretory carcinoma of salivary gland; NED, no evidence of disease; PTC, papillary thyroid carcinoma; RAI, radioactive iodine; RUL, right upper lobe; SBRT, stereotactic body radiation therapy; TG, thyroglobulin; TSH, thyroid-stimulating hormone; THRT, thyroid hormone replacement therapy.

**Table 2**

Ancillary studies	Case 1			Case 2			Case 3		
	Primary	First recurrence	Second recurrence	Primary		Second recurrence	Primary		
				PTC comp.	MASC comp.		PTC comp.	MASC comp.	
S-100	Pos (rare cells)	ND	Pos (rare cells)	Neg	Pos (rare cells)	Pos (focally)	Neg	Pos	
Mammaglobin	Pos	ND	Pos	Neg	Pos	pos	Neg	Pos	
GCDFP-15	Pos (focally)	ND	Pos (focally)	Neg	Neg	Neg	Neg	Pos (focally)	
p63	Pos (focally)	ND	ND	Neg	Pos (focally)	ND	Neg	Pos	
PAX8	Pos (weak)	ND	Pos (rare cells)	Pos	Pos (weak)	Pos (weak)	Pos	Pos (weak)	
TTF-1	Neg	Neg	Neg	Pos	Neg	Neg	Pos	Neg	
Thyroglobulin	Neg	Neg	Neg	Pos	Neg	Neg	Pos	Neg	
CK7	Pos	Pos	Pos	Pos	Pos	Pos	Pos	Pos	
CK19	Pos	ND	Pos	Pos (weak)	Pos	Pos	Pos (weak/very focally)	Pos	
Vimentin	Pos	ND	ND	Pos (very focally)	Neg	ND	Pos	Pos	
Mucicarmine	Pos	ND	Pos	Neg	Pos	Pos	Neg	Neg	
Calponin	ND	ND	Neg	ND	ND	Neg	Neg	Neg	
Her-2/Neu	ND	ND	Neg	ND	ND	Neg	Neg	Neg	
AR	ND	ND	Neg	ND	ND	Neg	Neg	Neg	
Ki-67	1–2% (3/10)	ND	7%	<1%	<1%	2%	<1%	5%	
ETV6 FISH	Pos	ND	Pos	Pos	Pos	Pos	Pos	Pos	
MSK-IMPACT	ND	ND	ETV6-NTRK3	ETV6-NTRK3	ETV6-NTRK3	ETV6-NTRK3	ETV6-NTRK3	ND	
		ETV6P214L (c.641C>T)	ETV6P214L (c.641C>T)	APCR640W (c.1918C>T)					
		KDM5C G496R (c.1486G>C)	KDM5C G496R (c.1486G>C)	HNF1A E619K (c.1855G>A)					
		PPP2R1A R182W (c.544C>T)	PPP2R1A R182W (c.544C>T)	SYK R22Q (c.65G>A)					

ND, not done; PTC, papillary thyroid carcinoma; MASC, mammary analog secretory carcinoma; FISH, fluorescence *in situ* hybridization.



**Table 3**

## Antibodies used for immunohistochemical studies

<i>Antibody specificity</i>	<i>Clone</i>	<i>Dilution</i>	<i>Source</i>
S-100	Polyclonal	1:8000	Dako
Mammaglobin	31A5	RTU	Ventana
GCDFP-15 (BR2)	D6	1:1000	Covance
p63	VS 38C	1:200	Dako
PAX8	Polyclonal	1:100	Proteintech
TTF-1	8G7G3/1	RTU	Ventana
Thyroglobulin	2H11+6E1	RTU	Cell Marque
CK7	OV-TL-12/30	1:1600	Dako
CK19	RCK-108	1:200	Dako
Vimentin	V9	RTU	Ventana
Calponin	EP798Y	RTU	Cell Marque
Her-2/Neu (HER2)	4B5	RTU	Ventana
AR	AR441	1:200	Dako
Ki-67 (MIB-1)	MIB-1	1:200	Dako

RTU, ready to use.