

Comprehensive Audiometric Analysis of Hearing Impairment and Tinnitus After Cisplatin-Based Chemotherapy in Survivors of Adult-Onset Cancer

Robert D. Frisina, Heather E. Wheeler, Sophie D. Fossa, Sarah L. Kerns, Chunkit Fung, Howard D. Sesso, Patrick O. Monahan, Darren R. Feldman, Robert Hamilton, David J. Vaughn, Clair J. Beard, Amy Budnick, Eileen M. Johnson, Shirin Ardeshir-Rouhani-Fard, Lawrence H. Einhorn, Steven E. Lipshultz, M. Eileen Dolan, and Lois B. Travis

Robert D. Frisina, University of South Florida, Tampa, FL; Heather E. Wheeler, Loyola University Chicago; M. Eileen Dolan, University of Chicago, Chicago, IL; Sophie D. Fossa, Oslo University Hospital, Radiumhospital, Oslo, Norway; Sarah L. Kerns, Chunkit Fung, and Eileen M. Johnson, J.P. Wilmot Cancer Institute, University of Rochester Medical Center, Rochester; Darren R. Feldman and Amy Budnick, Memorial Sloan Kettering Cancer Center, New York, NY; Howard D. Sesso, Brigham and Women's Hospital; Clair J. Beard, Dana-Farber Cancer Institute, Boston, MA; Patrick O. Monahan, Shirin Ardeshir-Rouhani-Fard, Lawrence H. Einhorn, and Lois B. Travis, Indiana University Melvin and Bren Simon Cancer Center, Indianapolis, IN; Robert Hamilton, Princess Margaret Cancer Centre, Toronto, ON; David J. Vaughn, University of Pennsylvania, Philadelphia, PA; and Steven E. Lipshultz, Children's Hospital of Michigan, Wayne State University School of Medicine, Detroit, MI.

Published online ahead of print at www.jco.org on June 27, 2016.

For the Platinum Study Group. The members and affiliations of the Study Group are listed in the online-only Appendix.

Support information appears at the end of this article.

R.D.F. and H.E.W. are co-first authors.

The views expressed in this article are the authors' own and not an official position of the institutions or funder.

Authors' disclosures of potential conflicts of interest are found in the article online at www.jco.org. Author contributions are found at the end of this article.

Corresponding author: Lawrence H. Einhorn, MD, Indiana University Melvin and Bren Simon Cancer Center, 535 Barnhill Drive, RT432, Indianapolis, IN 46202; e-mail: leinhorn@iupui.edu.

© 2016 by American Society of Clinical Oncology

0732-183X/16/3423w-2712w/\$20.00

DOI: 10.1200/JCO.2016.66.8822

See accompanying editorial on page 2687

ABSTRACT

Purpose

Cisplatin is widely used but highly ototoxic. Effects of cumulative cisplatin dose on hearing loss have not been comprehensively evaluated in survivors of adult-onset cancer.

Patients and Methods

Comprehensive audiological measures were conducted on 488 North American male germ cell tumor (GCT) survivors in relation to cumulative cisplatin dose, including audiograms (0.25 to 12 kHz), tests of middle ear function, and tinnitus. American Speech-Language-Hearing Association criteria defined hearing loss severity. The geometric mean of hearing thresholds (0.25 to 12 kHz) summarized overall hearing status consistent with audiometric guidelines. Patients were sorted into quartiles of hearing thresholds of age- and sex-matched controls.

Results

Increasing cumulative cisplatin dose (median, 400 mg/m²; range, 200 to 800 mg/m²) was significantly related to hearing loss at 4, 6, 8, 10, and 12 kHz (*P* trends, .021 to < .001): every 100 mg/m² increase resulted in a 3.2-dB impairment in age-adjusted overall hearing threshold (4 to 12 kHz; *P* < .001). Cumulative cisplatin doses > 300 mg/m² were associated with greater American Speech-Language-Hearing Association–defined hearing loss severity (odds ratio, 1.59; *P* = .0066) and worse normative-matched quartiles (odds ratio, 1.33; *P* = .093) compared with smaller doses. Almost one in five (18%) patients had severe to profound hearing loss. Tinnitus (40% patients) was significantly correlated with reduced hearing at each frequency (*P* < .001). Noise-induced damage (10% patients) was unaffected by cisplatin dose (*P* = .59). Hypertension was significantly related (*P* = .0066) to overall hearing threshold (4 to 12 kHz) in age- and cisplatin dose–adjusted analyses. Middle ear deficits occurred in 22.3% of patients but, as expected, were not related to cytotoxic drug dosage.

Conclusion

Follow-up of adult-onset cancer survivors given cisplatin should include routine inquiry for hearing status and tinnitus, referral to audiologists as clinically indicated, and hypertension control. Patients should be urged to avoid noise exposure, ototoxic drugs, and other factors that further damage hearing.

J Clin Oncol 34:2712-2720. © 2016 by American Society of Clinical Oncology

INTRODUCTION

The current 5-year relative survival rate for all cancers taken together approximates 66%.¹ As a result, there are 14.5 million cancer survivors in the United States. This number will increase to 19 million by 2024,² with 97% representing survivors of adult-onset cancer. Given these increasing numbers, in-depth investigations of treatment

toxicities that affect functional status, such as cisplatin-related hearing loss and tinnitus, are increasingly important.³ Cisplatin is one of the most ototoxic drugs in clinical use, causing permanent, bilateral sensorineural hearing loss in substantial numbers of patients, with many experiencing permanent tinnitus.⁴⁻⁶ Nonetheless, few comprehensive audiometric data exist for cisplatin-associated hearing loss in adult-onset cancer survivors. Several investigations of

patients with head and neck cancer were confounded by cranial radiotherapy⁷⁻⁹; limitations of other studies included small numbers,⁶ concomitant vincristine,^{6,10,11} and restriction of audiometric testing to just a few frequencies.^{10,11} To our knowledge, only one series evaluated hearing loss in terms of cumulative cisplatin dose,¹¹ and none included audiometric assessments of noise-induced damage, middle ear function, or evaluation of speech processing.^{4,6-11}

To fill important gaps in these areas, we conducted comprehensive audiometric testing in relation to cumulative cisplatin dose in 488 men with adult-onset germ cell tumors (GCT), testing all frequencies between 0.25 and 12 kHz and evaluating audiologically defined noise-induced damage, speech processing, tinnitus, patient-reported outcomes, and middle ear function.

PATIENTS AND METHODS

Patients

All patients were enrolled in the Platinum Study, which includes eight cancer centers in the United States and Canada.¹²⁻¹⁵ Eligibility criteria included: men with a diagnosis of histologically or serologically confirmed GCT, age younger than 50 years at diagnosis and age 18 years or older at study consent, treatment with cisplatin-based chemotherapy, and no subsequent salvage chemotherapy. Study procedures were approved by the Human Subjects Review Board at each institution. This report covers all 488 patients who completed audiometric testing through April 16, 2015.

Data Abstracted From Medical Records

For each patient, standardized forms were used to collect demographic and clinical data, including treatment information.^{16,17} Dose data were collected for cisplatin, etoposide, and bleomycin, with cumulative dose available for 95% of patients included in dose-response analyses. For the remaining 5%, cumulative dose was imputed from the median dose administered to all patients given the same regimen. Of all patients, 88% received either three to four cycles of bleomycin, etoposide, and cisplatin (BEP), or four cycles of etoposide and cisplatin (EP) at currently recommended standard doses.

Audiometric Testing

Pure-tone air conduction thresholds were obtained bilaterally for each patient at frequencies of 0.25 to 12 kHz as in prior studies,¹⁸⁻²⁰ covering the speech frequency range, including those important for perceiving vowels and consonants. Frequencies of 10 and 12 kHz were included, given their importance in the early diagnosis of pediatric cisplatin-induced hearing loss.²¹⁻²³ Otoscopy and bone-conduction thresholds (0.25 to 4 kHz) evaluated middle ear function. Speech reception thresholds (SRTs), which use speech stimuli consisting of two-syllable words, quantified speech processing.

Classification of hearing loss and assessment of severity. International American Speech-Language-Hearing Association (ASHA) criteria defined hearing loss as a hearing threshold at any frequency (0.25 to 12 kHz) that exceeded 20 dB for either ear.²⁴⁻²⁶ ASHA criteria defined hearing loss severity as follows: mild: 21 to 40 dB; moderate: 41 to 55 dB; moderately severe: 56 to 70 dB; severe: 71 to 90 dB; and profound: > 90 dB; for at least one tested frequency for either ear.²⁴

Statistical analysis. Cumulative cisplatin dose (mg/m²) was compared with the air conduction threshold at each frequency in the 0.25 to 12 kHz range, with statistical significance defined as $P < .05$ for dose in the linear regression model: hearing threshold = dose + age at audiometry. No evidence for nonlinearity of the cisplatin dose-response relationship was observed, as evaluated by comparisons of the linear model with cubic and quadratic models at each frequency ($P > .05$ in all cases).

To derive a summary measure of each patient's overall hearing status across all frequencies taken together (0.25 to 12 kHz), we calculated the geometric mean of air conduction hearing thresholds, consistent with

previous audiometric guidelines.²⁷ For each patient i , the geometric mean Y_i was calculated using standard methods²⁸ by taking the arithmetic mean of the natural log-transformed hearing threshold, d_i , from n frequencies and then using exponentiation to return the computation to the original dB scale (ie, log-average):

$$Y_i = \exp\left(\frac{1}{n} \sum_{i=1}^n \ln d_i\right)$$

This summary measure Y_i (overall hearing threshold [0.25 to 12 kHz]) was normally distributed on the basis of histogram shape, and the Shapiro-Wilk test²⁹ for departure from normality was not significant ($P = .24$). The summary measure Y_i was tested for association with age at diagnosis or age at audiometry using a linear regression model: overall hearing threshold = age. Asymmetry was defined as a > 20-dB difference in geometric means between ears.

The effect of cumulative etoposide dose (mg/m²) and bleomycin dose (units) on the geometric mean of air conduction thresholds (4 to 12 kHz) was evaluated with and without cumulative cisplatin dose as a covariate. Statistical significance was defined as $P < .05$ for the dose term in the following linear regression model: hearing threshold = dose + age at audiometry (+ doseCisplatin). Standard audiometric definitions³⁰ defined noise-induced hearing loss as hearing thresholds at 6 and 8 kHz at least 5 dB less (better hearing) than thresholds at middle frequencies (3 to 4 kHz).

Comparisons with normative population. Given the relationship between changes in hearing thresholds with increasing age,³¹ results were compared with a large unselected male reference population³² as applied in a previous study.^{10,33} Although several investigations described audiometrically defined hearing patterns in male populations,^{34,35} only Engdahl et al³² provided the quartiles of hearing thresholds (4, 6, 8 kHz) for a broad age range (eg, 20 to 29, 30 to 39, 40 to 49, 50 to 59, and 60 to 69 years). For frequencies for which we observed statistically significant relationships between increasing cumulative cisplatin dose and increasing (worse) hearing thresholds (4, 6, 8, 10, 12 kHz), normative data were available for 4, 6, and 8 kHz.³²

Statistical analysis. For each patient, we compared the geometric mean of hearing thresholds (4, 6, 8 kHz) to the expected geometric mean in the age-specific normative sample for 25th, 50th, and 75th percentiles.³² Each patient was allocated to the respective quartile (1 to 4) of the reference population, with quartile 4 representing the most severe hearing impairment. Cumulative cisplatin dose groups (≤ 300 mg/m² and > 300 mg/m²) were tested for association with age-matched normative quartiles (quartile = dose group) and with ASHA-defined severity classes (severity class = dose group + age at audiometry) by ordinal regression. The 300 mg/m² cut point was chosen, given its correspondence to the most commonly used study regimen (BEP), with the standard three cycles resulting in a cumulative cisplatin dose of 300 mg/m².

Patient-Reported Outcomes

Patients completed questionnaires concerning neurotoxic symptoms, lifestyle habits, comorbidities, and medication use.³⁶ The Scale for Chemotherapy-Induced Neurotoxicity (SCIN), validated in testicular cancer survivors (TCS) given cisplatin-based chemotherapy,³⁷ was used to query tinnitus and hearing; this was supplemented with validated hearing questions from Ventry and Weinstein³⁸ regarding noise exposure, hearing aid use, and problems hearing words or language in crowds.

Statistical analyses. SCIN results, smoking status (current smoker, ever smoker), and hypertension (defined as prescription medication for hypertension) were compared with the overall hearing threshold (4 to 12 kHz) and SRT. To test whether each variable (response) was associated with hearing thresholds, we fit the following linear regression model: overall hearing threshold = response + age at audiometry. All statistical models were fit using R version 3.1.1 (<http://www.R-project.org/>). Plots were

constructed using the R package *ggplot2*.³⁹ SCIN results and supplemental hearing-related questions were also tested for association with normative age-defined quartiles. For all analyses, statistical significance was defined as $P < .05$ (two-sided).

RESULTS

Median age at diagnosis was 31 years (range, 15 to 49 years), and median interval between chemotherapy and audiometry was 4.25 years (range, 1 to 30.3 years; [Table 1](#)). Chemotherapy consisted largely of BEP (60.5%) or EP (32.0%). Median cumulative cisplatin dose was 400 mg/m² (range, 198 to 800 mg/m²). Hypertension (with prescription medication) was reported by 12.3% of patients; 30.5% and 5.9% of patients were former and current smokers, respectively.

Overall Hearing Loss

Audiogram shapes showed a largely high-frequency, sloping hearing loss, with substantial interindividual variation ([Fig 1](#)). Only 20% of patients had normal hearing (ie, flat audiogram; [Fig 1A](#)), whereas others had differing degrees of hearing loss, with ASHA-defined mild, moderate, moderately severe, or severe/profound hearing loss, in 25%, 16%, 21%, and 18%, respectively ([Figs 1B to 1F](#)).²⁴ For two patients with ear asymmetry, data were averaged.

Most patients (388 of 488, 80%) had a hearing loss of > 20 dB ([Fig 2](#)).²⁴ The overall pattern of kHz-specific hearing thresholds accentuated its high-frequency nature, with the largest reductions at 12 kHz. Age at either audiometry ($P < .001$) or GCT diagnosis ($P < .001$) strongly associated with impaired overall hearing threshold (0.25 to 12 kHz). Because these variables were highly correlated ($R = 0.79$), only the former was subsequently applied.

Cumulative Cisplatin Dose

Statistically significant age-adjusted relationships between increasing cumulative cisplatin dose and increasing (worse) hearing thresholds (dB) existed for 4 kHz ($P = .021$), 6 kHz ($P = .0017$), 8 kHz ($P < .001$), 10 kHz ($P < .001$), and 12 kHz ($P = .0013$), but not for other frequencies (Appendix [Fig A1](#), online only). Cumulative cisplatin doses > 300 mg/m² were associated with increased ASHA severity classes²⁴ compared with ≤ 300 mg/m² after age adjustment ([Fig 3](#); odds ratio [OR], 1.59; 95% CI, 1.14 to 2.21; $P = .0066$). Moderately severe to profound hearing loss occurred in 29.5% and 44.6% of patients, respectively, after ≤ 300 mg/m² and > 300 mg/m² of cisplatin. Dose group did not correlate with age ($P = .24$).

Comparisons to Normative Population

[Figure 4A](#) shows subject distribution by age and normative hearing quartile. Patients administered > 300 mg/m² cisplatin were more likely to be in a higher quartile (worse hearing) than those given ≤ 300 mg/m² ([Fig 4B](#); OR, 1.33; 95% CI, 0.95 to 1.85; $P = .093$). For every 100-mg/m² increase in cumulative cisplatin dose, a 3.2-dB decline in overall hearing threshold (4 to 12 kHz) occurred after age adjustment ([Fig 5A](#); $P < .001$). Time from chemotherapy to audiometry correlated with worse overall hearing

Table 1. Demographic Features, Clinical Characteristics, and Patient-Reported Outcomes for 488 Male Germ Cell Tumor Survivors at the Time of Enrollment Onto the Platinum Study

Characteristic	No. (%)
Total patients	488
Age at GCT diagnosis, years	
Median (range)	31 (15-49)
< 20	24 (4.9)
20-29	187 (38.3)
30-39	182 (37.3)
40-49	95 (19.5)
Age at audiometry, years	
Median (range)	38 (20-68)
20-29	88 (18.0)
30-39	180 (36.9)
40-49	138 (28.3)
50-59	75 (15.4)
60-69	7 (1.4)
Time from chemotherapy to audiometry, months	
Median (range)	51 (5-364)
< 24	105 (21.8)
24-47	121 (25.2)
48-71	72 (15.0)
72-119	81 (16.8)
≥ 120	102 (21.2)
Race	
White	428 (87.7)
Nonwhite	54 (11.1)
Not available	6 (1.2)
Calendar year of diagnosis	
1980-1989	5 (1.0)
1990-1999	57 (11.7)
2000-2009	207 (42.4)
2010-2015	219 (44.9)
Histology	
Seminoma	139 (28.5)
Nonseminoma/mixed GCT	344 (70.5)
GCT, not otherwise specified	5 (1.0)
Clinical stage	
I	138 (28.3)
II	184 (37.7)
III ^a	102 (20.9)
Other ^b	63 (12.9)
Not specified	1 (0.2)
Site of GCT	
Testis	435 (89.1)
Extragenital	52 (10.7)
Not specified	1 (0.2)
Chemotherapy regimen	
BEP: total cycles ^c	295 (60.5)
2	8 (1.6)
3	183 (37.5)
4	99 (20.3)
5+	5 (1.0)
EP: total cycles ^d	156 (32.0)
≤ 3	1 (0.2)
4	150 (30.7)
5+	5 (1.0)
Cisplatin, etoposide, ifosfamide: total cycles ^e	21 (4.3)
3	1 (0.2)
4	17 (3.5)
5+	3 (0.6)
Other cisplatin-based regimens: total cycles ^f	16 (3.3)
3	2 (0.4)
4	14 (2.9)
Cumulative dose of cisplatin, all patients, mg/m ^{2g}	
< 300	25 (5.1)
300	165 (33.8)

(continued on following page)

Table 1. Demographic Features, Clinical Characteristics, and Patient-Reported Outcomes for 488 Male Germ Cell Tumor Survivors at the Time of Enrollment Onto the Platinum Study (continued)

Characteristic	No. (%)
301-399	22 (5.0)
400	254 (52.1)
> 400	22 (4.5)
Education	
High school or less	48 (9.8)
After high school but not college ^h	96 (19.7)
College/university graduate	222 (45.5)
Postgraduate level	112 (23.0)
Other/prefer not to say/not answered	10 (2.0)
Smoking status	
Current smoker	29 (5.9)
Former smoker	149 (30.5)
Never smoker	294 (60.2)
Not answered	16 (3.3)
Hypertension and on prescription medication	60 (12.3)
Noise exposure	
None	271 (55.5)
Work-related only	83 (17.0)
Non-work-related only	53 (11.1)
Both	73 (15.0)
Other ⁱ	7 (1.4)
Tinnitus	
Not at all	287 (58.8)
A little	115 (23.6)
Quite a bit	38 (7.8)
Very much	39 (8.0)
Not answered	9 (1.8)
Reduced hearing	
Not at all	335 (68.7)
A little	108 (22.1)
Quite a bit	24 (4.9)
Very much	12 (2.5)
Not answered	9 (1.8)
Problems hearing in crowds	
Yes	145 (29.7)
No	316 (64.8)
Don't know/not sure	20 (4.1)
Not answered	7 (1.4)
Require hearing aid	
No	476 (97.5)
In one ear	1 (0.2)
In both ears	5 (1.0)
Not answered	6 (1.2)

Abbreviations: BEP, bleomycin, etoposide, and cisplatin; EP, etoposide, and cisplatin; GCT, germ cell tumor; IV, intravenously.

^aIncludes IIIc (n = 16).

^bIncludes 59 patients for whom data were indicated as unavailable/not applicable and eight for whom this variable was not available/blank.

^cMedian cumulative cisplatin doses among patients given three and four cycles of BEP were 300 mg/m² (range, 272 to 400 mg/m²) and 400 mg/m² (range, 198 to 600 mg/m²), respectively. For all BEP-treated patients, the median cumulative cisplatin dose was 300 mg/m² (range, 198 to 800 mg/m²). Corresponding median doses of etoposide were 1,500 mg/m² (range, 1,014 to 1,677 mg/m²), 2,000 mg/m² (range, 500 to 4,645 mg/m²), and 1,500 mg/m² (range, 500 to 4,645 mg/m²), respectively, with median doses of bleomycin 270 units (range, 64 to 330 units), 360 units (range, 60 to 360 units), and 270 units (range, 60 to 540 units), respectively. Of all men treated with BEP, 215 received standard dosages for each cycle (bleomycin 30 units IV weekly; etoposide 100 mg/m² IV once per day × 5 days; cisplatin 20 mg/m² IV once per day × 5 days), and 80 received a modified dose for at least one cycle.

^dMedian cumulative dose of cisplatin among patients given four cycles of EP was 400 mg/m² (range, 400 to 600 mg/m²), and among all patients given EP it was 400 mg/m² (range, 200 to 600 mg/m²). Corresponding median doses of etoposide were 2,000 mg/m² (range, 500 to 3,000 mg/m²) and 2,000 mg/m² (range, 500 to 3,000 mg/m²), respectively. Of men receiving EP, 99 received standard dose (etoposide 100 mg/m² IV once per day × 5 days, cisplatin 20 mg/m² IV once per day × 5 days), and 57 received a modified dose for at least one cycle.

($R = 0.23$; 95% CI, 0.14 to 0.32), likely a result of the strong positive correlation with age ($R = 0.48$; 95% CI, 0.41 to 0.55). On adjustment for both age and time since chemotherapy, we still observed for every 100-mg/m² increase in cumulative cisplatin dose a 3.3-dB decline in overall hearing threshold (4 to 12 kHz; $P < .001$). In this multivariate model, time from chemotherapy was not significant ($P = .42$), whereas age was highly significant ($P < .001$).

Noise-Induced Hearing Loss

Of 388 patients with hearing loss (> 20 dB) at any frequency, 39 (10%) also displayed audiometrically defined noise damage. Risk did not differ for patients given a cumulative cisplatin dose of > 300 mg/m² or ≤ 300 mg/m² ($P = .59$), nor did noise damage affect normative quartile assignment ($P = .42$). Work-related noise exposure was associated with a noise notch in the audiogram (OR, 1.89; 95% CI, 0.96 to 3.69; $P = .062$), as observed by others.³⁸

Conductive Hearing Loss (middle ear deficit)

Of all 488 patients, 58% (283) had pure sensorineural hearing loss, 0.4% (two) had pure conductive hearing loss, and 21% (103) had mixed hearing loss. As expected, no association with cumulative dose of cisplatin, etoposide, or bleomycin was evident for the 105 patients with conductive hearing loss ($P = .78, 0.69, 0.42$, respectively).

Other Risk Factors

In analyses adjusted for age and cisplatin dose, impaired overall hearing threshold (4 to 12 kHz) was significantly associated with hypertension (n = 60; $P = .0066$). No significant association was evident for current smoking (n = 29; $P = .079$) or ever smoking (current plus former; n = 178; $P = .095$).

Associations With Patient-Reported Outcomes

Approximately 30% and 40% of patients, respectively, reported reduced hearing or tinnitus (Table 1). Impaired overall hearing threshold (4 to 12 kHz) was strongly associated with degree of self-reported hearing loss ($P < .001$) and with tinnitus ($P < .001$) after age adjustment (Fig 5B). Statistically significant relationships between tinnitus and impaired hearing thresholds were observed at each frequency: 0.25 kHz ($P = .012$), 0.5 kHz

^eMedian cumulative dose of cisplatin among all men receiving this regimen was 400 mg/m² (range, 300 to 800 mg/m²). Corresponding median doses of etoposide and ifosfamide were 1,500 mg/m² (range, 1,000 to 2,000 mg/m²) and 24 g/m² (range, 6 to 30 g/m²), respectively. Of men receiving cisplatin, etoposide, and ifosfamide, 14 received standard doses (cisplatin 20 mg/m² IV once per day × 5 days, etoposide 75 mg/m² IV once per day × 5 days, ifosfamide 1.2 g/m² IV once per day × 5 days), and seven received a modified dose for at least one cycle.

^fOf the 16 patients, 11 received combination chemotherapy consisting of cisplatin and ifosfamide; one received cisplatin, etoposide, bleomycin, and ifosfamide. For the remaining four, other combinations of cisplatin-based chemotherapy were applied.

^gMedian cumulative dose of cisplatin among all patients was 400 mg/m² (range, 198 to 800 mg/m²).

^hThis includes some college/university but without conferral of a degree (n = 76).

ⁱIncludes one patient who answered "no" to job-related noise exposure but did not reply to question regarding other noise sources and six patients who answered "no" to other sources of noise exposure but did not reply to question regarding job-related noise.

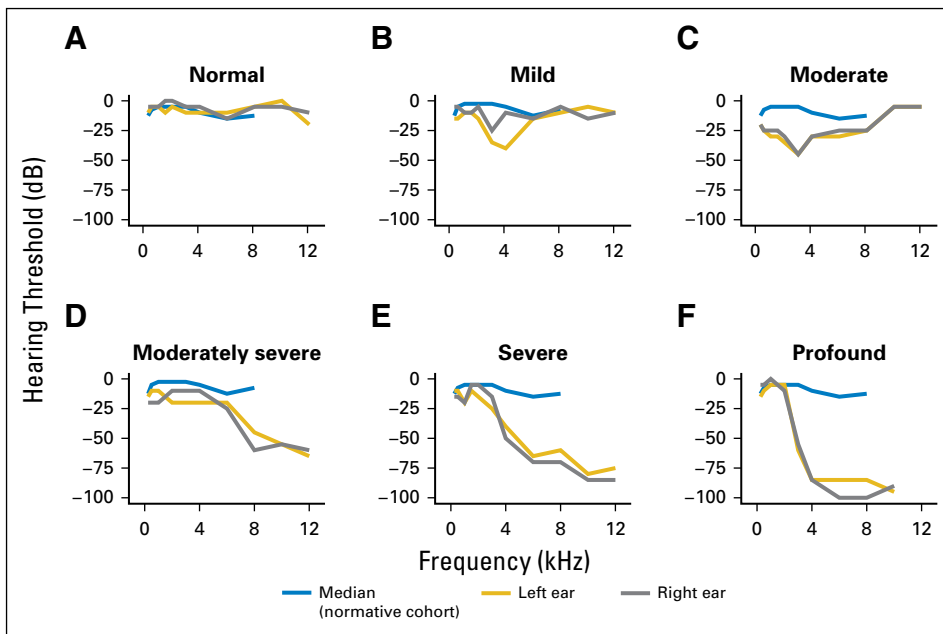


Fig 1. Representative left- and right-ear audiograms with varying levels of severity defined by American Speech-Language-Hearing Association criteria²⁴ in the Platinum Study cohort. Results shown here are derived from patients age 28 to 35 years. The median (blue line) is derived from the normative cohort of men in each patient’s respective age group (20 to 29 or 30 to 39 years; Table 4 in Engdahl et al 2005³²). Hearing loss classification: (A) normal hearing, (B) sensorineural, (C) mixed (sensorineural and conductive), (D) sensorineural, (E) sensorineural, (F) sensorineural.

($P = .0058$), 1 kHz ($P = .0019$), 1.5 kHz ($P < .001$), 2 kHz ($P < .001$), 3 kHz ($P < .001$), 4 kHz ($P < .001$), 6 kHz ($P < .001$), 8 kHz ($P < .001$), 10 kHz ($P < .001$), and 12 kHz ($P < .001$). Similar results were obtained for SRT and tinnitus ($P = .0039$) and reduced hearing ($P < .001$; Fig 5C). Tinnitus did not correlate with time since chemotherapy ($P = .17$)

DISCUSSION

To our knowledge, this is the largest and most comprehensive study of cisplatin-associated ototoxicity in survivors of adult-onset

cancer, including quantitative comparisons of frequency-specific audiometric findings with patient-reported outcomes. New findings include statistically significant associations between increasing cumulative cisplatin dose and hearing loss at each of 4, 6, 8, 10, and 12 kHz and with severity of hearing loss defined by ASHA criteria.²⁴ Highly significant associations between hearing loss at each kHz frequency and tinnitus were observed, in addition to significant correlations between SRT and tinnitus and self-reported hearing loss. Cumulative cisplatin dose was not related to audiometrically defined noise-induced hearing loss. Impaired overall hearing threshold (4 to 12 kHz) was significantly associated with hypertension but not smoking status. Middle ear deficits were observed.

There are few audiometric data in survivors of adult-onset cancer treated with cisplatin-based chemotherapy without cranial radiotherapy. Among 86 TCS, Bokemeyer et al⁶ tested frequencies of 0.5 to 8 kHz at a median of 4.8 years after cisplatin-based chemotherapy. Hearing loss was reported in 66% of patients, but frequency-specific associations with cumulative cisplatin dose were not examined. Glendenning et al¹¹ evaluated frequencies of 1, 2, 4, and 8 kHz among 260 TCS, with cumulative cisplatin dose associated with hearing loss only at 8 kHz. An investigation of several hundred cisplatin-treated TCS in Norway restricted audiometric testing to 4 kHz and compared hearing loss with a normative population.¹⁰ Although TCS given larger numbers of cycles of cisplatin-based chemotherapy were assigned to greater hearing-impaired normative quartiles, the effect of cumulative cisplatin dose was not addressed.¹⁰

More than 90% of our 488 patients received modern cisplatin-based chemotherapy consisting largely of BEP or EP; thus, results are relevant to current practice. Hearing deficits were observed throughout the speech perception range, including the higher frequencies reported in pediatric studies,^{21,23,40,41} likely accounting for the strong correlation we observed for overall hearing threshold (4 to 12 kHz) and SRT and patient-reported hearing deficits (Fig 5B).

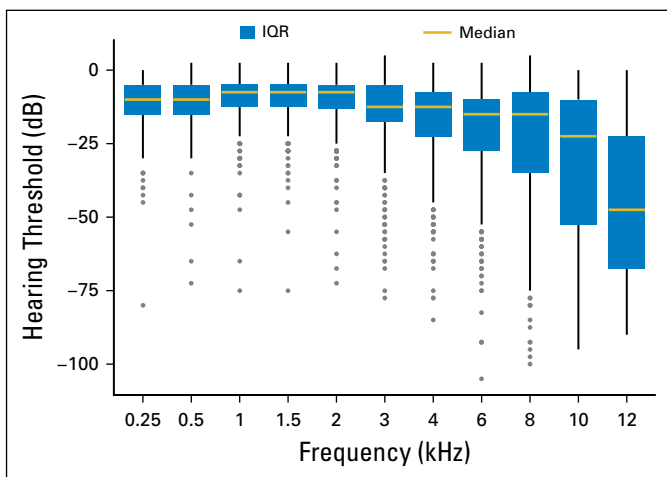


Fig 2. Distribution of hearing threshold levels (decibels of hearing loss) at each audiometric frequency (Hz; N = 488 patients). The threshold level for each patient represents the mean of left- and right-ear audiogram thresholds. Boxes define the interquartile range (IQR), and the gold horizontal line represents the median. The upper whisker extends from the third quartile to the highest value that is within $1.5 \times$ IQR. The lower whisker extends from the first quartile to the lowest value within $1.5 \times$ IQR. Outliers beyond $1.5 \times$ IQR are plotted as individual data points.

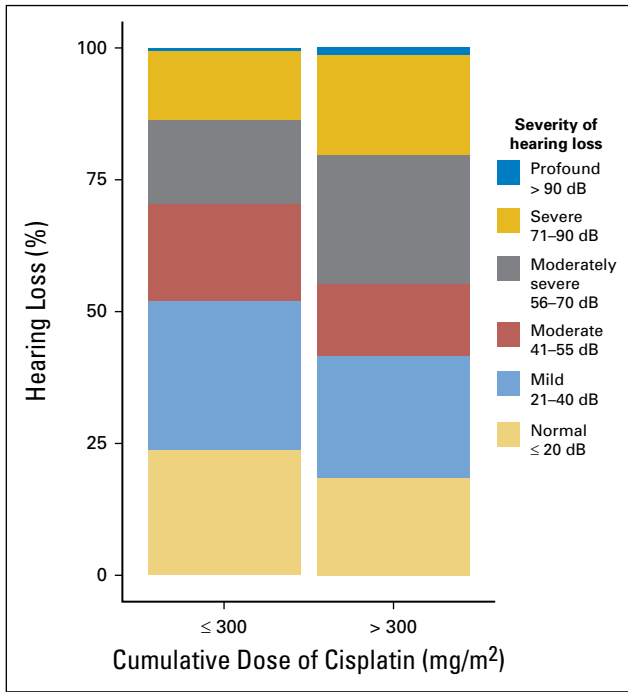


Fig 3. Severity of American Speech-Language-Hearing Association–defined hearing loss²⁴ according to cumulative cisplatin dose group (mg/m²).

One in five patients had severe or profound hearing loss, a level at which hearing aids are typically recommended, but few used them, likely because of high cost, lack of insurance coverage, low performance/price ratio, or appearance.⁴² It is noteworthy that awareness of this problem and the patient’s acceptance of hearing loss typically increases hearing aid use.⁴² An additional 37% of patients with moderate or moderately severe ASHA-defined hearing loss would benefit from additional audiological follow-up, as clinically indicated. Worsening of audiometrically assessed cisplatin-associated hearing loss with time has been reported in childhood cancer survivors^{43,44} but has not been longitudinally studied in survivors of adult-onset cancer to our knowledge. The

effect of cumulative cisplatin dose on hearing loss in our cross-sectional investigation remained statistically significant for many decades ($P < .001$), although the effect of increasing age was even stronger. Because higher frequencies are also disproportionately affected by age-related hearing loss, it will be critical to evaluate the extent to which survivors of adult-onset cancer given cisplatin-based chemotherapy may experience accelerated age-related sensory deficits.

Tinnitus

Tinnitus was significantly associated with impaired hearing at all frequencies, including 10 and 12 kHz, and reflects neural changes in the brain’s central auditory system.^{45,46} Hearing loss perturbs normal input to this area, a mismatch between excitatory and inhibitory networks occurs, and neurons underlying sound perception become abnormally activated, even without external stimulation. In some patients, tinnitus becomes debilitating as a sensory, anxiety-producing, and communication deficit.⁴⁷ Few treatments are effective, with most relying on behavioral modification.⁴⁷

Noise Damage

The presence of noise notches in audiograms has not been previously evaluated in cancer survivors given cisplatin^{6,10,11} or cranial radiotherapy.^{4,7-9} The proportion (10%) of our patients with audiograms suggestive of noise damage is comparable to, or slightly less than, normative data assembled by the US Centers for Disease Control and Prevention, which reports that 17% of adults (20 to 69 years) demonstrate permanent noise-induced hearing damage.⁴⁸ Our slightly lower prevalence may reflect the younger age distribution compared with population norms.

Conductive Hearing Loss (middle ear deficits)

The prevalence of conductive hearing loss is approximately 8% in adults without cancer^{31,32,49} and generally attributed to infection- or treatment- or age-related damage to sound conduction mechanisms.⁵⁰ An explanation for the increased

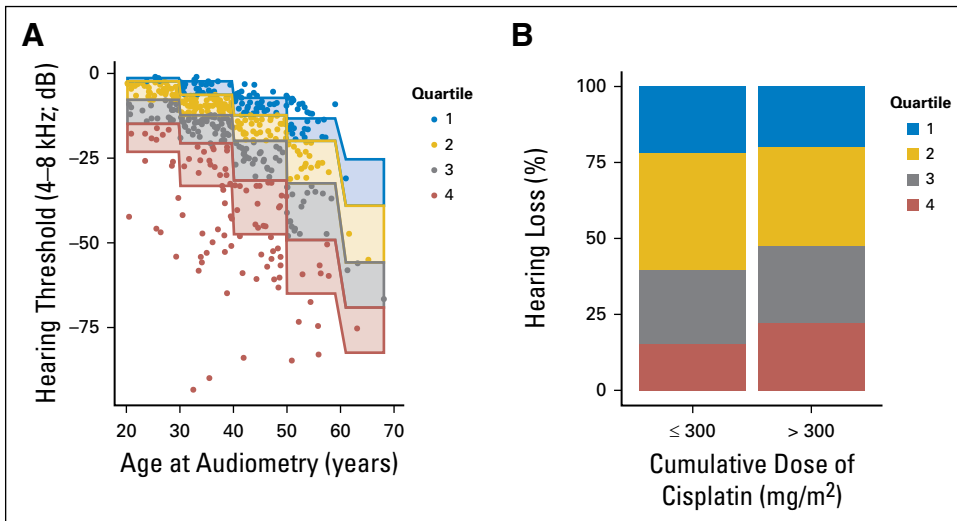


Fig 4. (A) Comparison of overall hearing threshold (4 to 8 kHz) among study subjects with quartiles of age-specific normative data. Quartiles 1-4 represent the following normative percentile ranges, respectively: 10% to 24.9%, 25% to 49.9%, 50% to 74.9%, and 75% to 90%. (B) Comparison of the two cumulative cisplatin dose groups with quartiles of age-specific normative data.

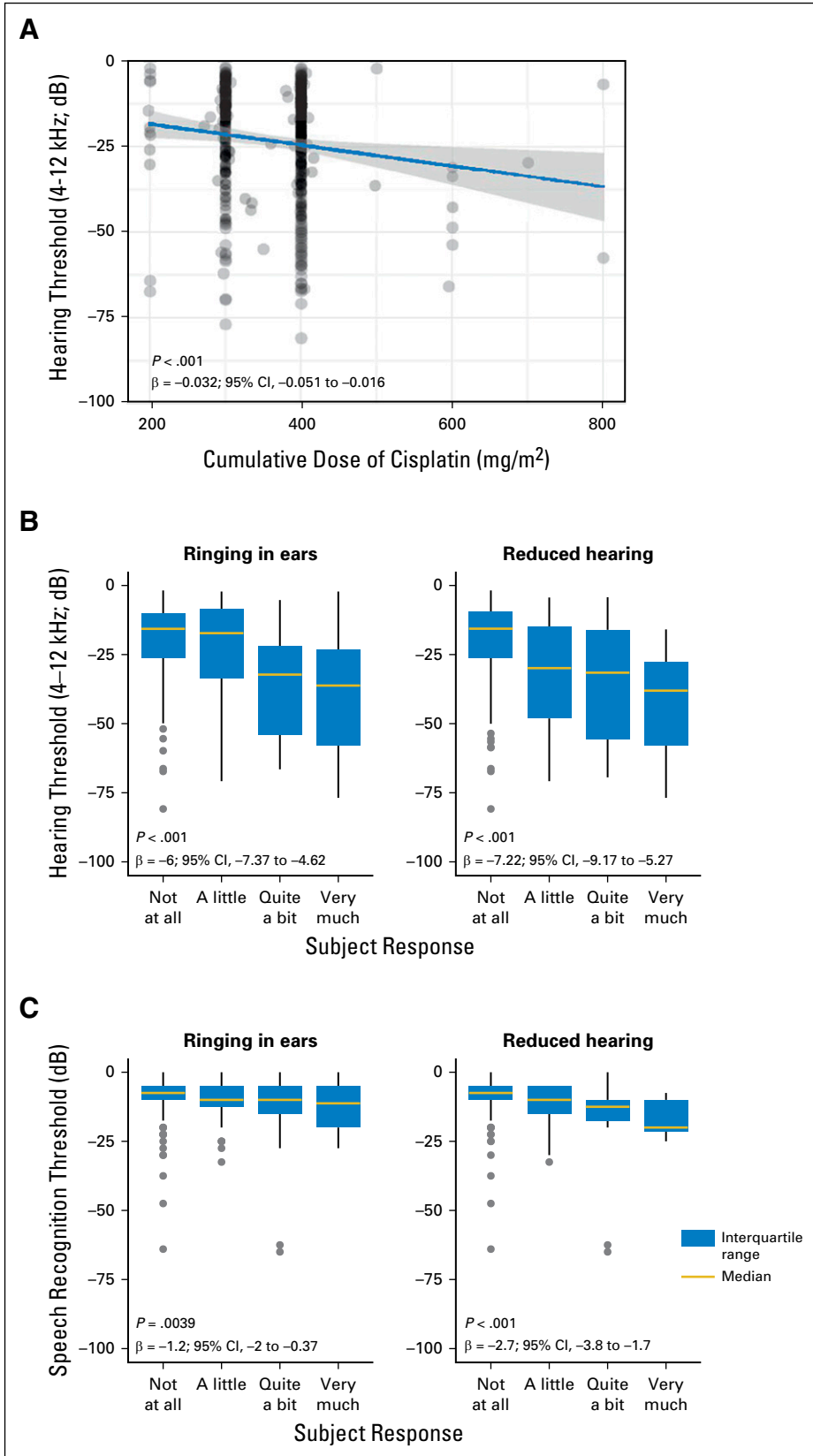


Fig 5. (A) Comparison of overall hearing threshold (4 to 12 kHz) to cumulative cisplatin dose. The P value is for the dose term in the following linear regression model: dB = dose + age at audiometry. (B) Comparison of overall hearing threshold (4 to 12 kHz) to the Scale for Chemotherapy-Induced Long-Term Neurotoxicity items for ringing in ears and reduced hearing.³⁷ The P value is for the response term in the following linear regression model: dB = response + age at audiometry. (C) Comparison of speech recognition threshold to the Scale for Chemotherapy-Induced Long-term Neurotoxicity items for ringing in ears and reduced hearing.³⁷ The P value is for the response term in the following linear regression model: dB = response + age at audiometry.

prevalence we observed is not readily apparent and, as expected, was not related to cytotoxic drug exposure dosage levels.

Comment

Strengths of our study include large numbers of patients, detailed treatment data, thorough hearing evaluations, adjustments for age-related hearing loss, and consideration of covariates. Our quantitative assessment of cumulative cisplatin dose and frequency-specific hearing loss is not confounded by vincristine^{6,10,11} or cranial radiotherapy.^{4,7-9} Although pediatric investigations of cisplatin-induced hearing loss^{21-23,51,52} have yielded valuable perspective on classification approaches, pediatric scales do not take into account age-related hearing loss. To adjust for this effect, we not only included age in multivariate analyses but also compared hearing thresholds with age-matched normative data, because as in previous studies of ototoxicity in adult-onset cancer survivors, baseline hearing measures were not available.^{6,8,9,53} Because suitable data were unavailable for a North American cohort, we used normative data from a National Institutes of Health–sponsored study of 40,541 Norwegian men (97% white).³² Although we found expected relationships between higher cisplatin dose and assignment to worse age-matched hearing quartiles, we were not able to adjust for potentially differing distributions of hypertension, smoking, and other potential confounders.⁵⁴ Any differences, however, are unlikely to materially affect our conclusions.

Cancer Survivor Plans and Future Research

Although follow-up hearing assessment guidelines exist for children given cisplatin-based chemotherapy,⁵¹ we found no similar recommendations for adult-onset cancer survivors. For children, a complete audiological evaluation at entry into long-term follow-up is recommended by the Children's Oncology Group,⁵¹ with annual testing if hearing loss is detected or as recommended by an audiologist, as well as yearly questioning about hearing status. Similarly, for adult-onset cancer survivors after cisplatin-based chemotherapy, our findings suggest that health care providers should at a minimum annually query patients about hearing status, consulting with audiologists as indicated. Patients should also be urged to avoid noise exposure, ototoxic drugs, and other factors that may further damage hearing. As recommended by national regulatory agencies for the general population,^{55,56} patients should be advised to wear hearing

protection in noisy environments and take advantage of new, digital hearing aids and other innovative auditory therapies that are emerging.⁵⁷ Given the significant relationship we found between hypertension and hearing loss and reported in other studies for tobacco use,^{10,11} health care providers should monitor blood pressure and encourage smoking cessation.

Because alterations in the highly successful GCT regimens are unlikely, our results point to the importance of ongoing research aimed at the identification of genetic variants associated with cisplatin-related ototoxicity.⁵⁸ It is possible that genomic analysis may be able to eventually identify patients with newly diagnosed testicular cancer susceptible to ototoxicity. These findings could affect decisions with regard to the administration of adjuvant chemotherapy for high-risk clinical stage I disease or adjuvant chemotherapy after initial orchiectomy and retroperitoneal lymph node dissection with positive lymph nodes to prevent recurrence.^{59,60}

AUTHORS' DISCLOSURES OF POTENTIAL CONFLICTS OF INTEREST

Disclosures provided by the authors are available with this article at www.jco.org.

AUTHOR CONTRIBUTIONS

Conception and design: Robert D. Frisina, Heather E. Wheeler, Sophie D. Fossa, Howard D. Sesso, Clair J. Beard, Lawrence H. Einhorn, M. Eileen Dolan, Lois B. Travis

Financial support: Lois B. Travis

Administrative support: Robert D. Frisina, Lois B. Travis

Provision of study materials or patients: Chunkit Fung, Darren R. Feldman, Robert Hamilton, David J. Vaughn, Clair J. Beard, Lawrence H. Einhorn

Collection and assembly of data: Heather E. Wheeler, Robert Hamilton, David J. Vaughn, Clair J. Beard, Amy Budnick, Eileen M. Johnson, Lois B. Travis

Data analysis and interpretation: Robert D. Frisina, Heather E. Wheeler, Sophie D. Fossa, Sarah L. Kerns, Chunkit Fung, Howard D. Sesso, Patrick O. Monahan, Darren R. Feldman, Clair J. Beard, Shirin Ardeshir-Rouhani-Fard, Steven E. Lipshultz, M. Eileen Dolan, Lois B. Travis

Manuscript writing: All authors

Final approval of manuscript: All authors

REFERENCES

1. Altekruse S, Kosary C, Krapcho M, et al: SEER Cancer Statistics Review, 1975–2007. Bethesda, MD, National Cancer Institute, 2010
2. DeSantis CE, Lin CC, Mariotto AB, et al: Cancer treatment and survivorship statistics, 2014. *CA Cancer J Clin* 64:252-271, 2014
3. Elena JW, Travis LB, Simonds NI, et al: Leveraging epidemiology and clinical studies of cancer outcomes: Recommendations and opportunities for translational research. *J Natl Cancer Inst* 105:85-94, 2013

4. Schell MJ, McHaney VA, Green AA, et al: Hearing loss in children and young adults receiving cisplatin with or without prior cranial irradiation. *J Clin Oncol* 7:754-760, 1989
5. Osanto S, Bukman A, Van Hoek F, et al: Long-term effects of chemotherapy in patients with testicular cancer. *J Clin Oncol* 10:574-579, 1992
6. Bokemeyer C, Berger CC, Hartmann JT, et al: Analysis of risk factors for cisplatin-induced ototoxicity in patients with testicular cancer. *Br J Cancer* 77:1355-1362, 1998
7. Theunissen EA, Zuur CL, Józwiak K, et al: Prediction of hearing loss due to cisplatin chemotherapy. *JAMA Otolaryngol Head Neck Surg* 141:810-815, 2015

8. Chen WC, Jackson A, Budnick AS, et al: Sensorineural hearing loss in combined modality treatment of nasopharyngeal carcinoma. *Cancer* 106:820-829, 2006
9. Zuur CL, Simis YJ, Lansdaal PE, et al: Ototoxicity in a randomized phase III trial of intra-arterial compared with intravenous cisplatin chemoradiation in patients with locally advanced head and neck cancer. *J Clin Oncol* 25:3759-3765, 2007
10. Brydøy M, Oldenburg J, Klepp O, et al: Observational study of prevalence of long-term Raynaud-like phenomena and neurological side effects in testicular cancer survivors. *J Natl Cancer Inst* 101:1682-1695, 2009

11. Glendenning JL, Barbachano Y, Norman AR, et al: Long-term neurologic and peripheral vascular toxicity after chemotherapy treatment of testicular cancer. *Cancer* 116:2322-2331, 2010
12. Case-Eads SL, Travis LB, Fung C, et al: Psychotropic and stimulant medication (PSM) use among testicular cancer survivors (TCS): A multi-institutional clinical study of 680 patients given cisplatin-based chemotherapy. *J Clin Oncol* 34, 2015 (suppl; abstr 242)
13. Fung C, Feldman DR, Hamilton RJ, et al: Cardiovascular disease risk factors among cisplatin-treated testicular cancer survivors (TCS): A multicenter clinical study of U.S. and Canadian patients. *J Clin Oncol* 33, 2015 (suppl 7; abstr 391)
14. Wheeler HE, Travis LB, Budnick A, et al: Comprehensive characterization of cisplatin-related hearing loss in U.S. and Canadian testicular cancer survivors (TCS). *J Clin Oncol* 33, 2015 (suppl; abstr 9570)
15. Zaid MA, Sesso HD, Fung C, et al: Chronic health conditions following cisplatin-based chemotherapy: A multi-institutional study of 680 testicular cancer survivors (TCS). *J Clin Oncol* 33, 2015 (suppl; abstr 9519)
16. Travis LB, Andersson M, Gospodarowicz M, et al: Treatment-associated leukemia following testicular cancer. *J Natl Cancer Inst* 92:1165-1171, 2000
17. Travis LB, Holowaty EJ, Bergfeldt K, et al: Risk of leukemia after platinum-based chemotherapy for ovarian cancer. *N Engl J Med* 340:351-357, 1999
18. Frisina ST, Mapes F, Kim S, et al: Characterization of hearing loss in aged type II diabetics. *Hear Res* 211:103-113, 2006
19. Guimaraes P, Frisina ST, Mapes F, et al: Progesterin negatively affects hearing in aged women. *Proc Natl Acad Sci U S A* 103:14246-14249, 2006
20. Newman DL, Fisher LM, Ohmen J, et al: GRM7 variants associated with age-related hearing loss based on auditory perception. *Hear Res* 294:125-132, 2012
21. Knight KR, Kraemer DF, Winter C, et al: Early changes in auditory function as a result of platinum chemotherapy: Use of extended high-frequency audiometry and evoked distortion product otoacoustic emissions. *J Clin Oncol* 25:1190-1195, 2007
22. Chang KW, Chinosornvatana N: Practical grading system for evaluating cisplatin ototoxicity in children. *J Clin Oncol* 28:1788-1795, 2010
23. Abujamra AL, Escosteguy JR, Dall'Igna C, et al: The use of high-frequency audiometry increases the diagnosis of asymptomatic hearing loss in pediatric patients treated with cisplatin-based chemotherapy. *Pediatr Blood Cancer* 60:474-478, 2013
24. American Speech-Language-Hearing Association: Degree of Hearing Loss. www.asha.org/public/hearing/Degree-of-Hearing-Loss/
25. Clark JG: Uses and abuses of hearing loss classification. *ASHA* 23:493-500, 1981
26. Le Prell CG, Hensley BN, Campbell KC, et al: Evidence of hearing loss in a "normally-hearing" college-student population. *Int J Audiol* 50:S21-S31, 2011 (suppl 21)
27. Casali JG, Robinson GS: Noise in Industry: Auditory Effects, Measurement, Regulation and Management. New York, NY, CRC Press, 2003 doi: [10.1201/9780203010457.pt2](https://doi.org/10.1201/9780203010457.pt2)
28. Crawley MJ. Statistics: An Introduction. New York, NY, Wiley, 2007
29. Shapiro SS, Wilk MB: An analysis of variance test for normality (complete samples). *Biometrika* 52:591-611, 1965
30. McBride DL, Williams S: Audiometric notch as a sign of noise induced hearing loss. *Occup Environ Med* 58:46-51, 2001
31. Cruickshanks KJ, Tweed TS, Wiley TL, et al: The 5-year incidence and progression of hearing loss: The epidemiology of hearing loss study. *Arch Otolaryngol Head Neck Surg* 129:1041-1046, 2003
32. Engdahl B, Tambs K, Borchgrevink HM, et al: Screened and unscreened hearing threshold levels for the adult population: Results from the Nord-Trøndelag Hearing Loss Study. *Int J Audiol* 44:213-230, 2005
33. Oldenburg J, Kraggerud SM, Brydøy M, et al: Association between long-term neuro-toxicities in testicular cancer survivors and polymorphisms in glutathione-s-transferase-P1 and -M1, a retrospective cross sectional study. *J Transl Med* 5:70, 2007
34. Urben SL, Benninger MS, Gibbens ND: Asymmetric sensorineural hearing loss in a community-based population. *Otolaryngol Head Neck Surg* 120:809-814, 1999
35. Allen PD, Eddins DA: Presbycusis phenotypes form a heterogeneous continuum when ordered by degree and configuration of hearing loss. *Hear Res* 264:10-20, 2010
36. Palomar García V, Abdulghani Martínez F, Bodet Agustí E, et al: Drug-induced ototoxicity: Current status. *Acta Otolaryngol* 121:569-572, 2001
37. Oldenburg J, Fosså SD, Dahl AA: Scale for chemotherapy-induced long-term neurotoxicity (SCIN): Psychometrics, validation, and findings in a large sample of testicular cancer survivors. *Qual Life Res* 15:791-800, 2006
38. Ventry IM, Weinstein BE: The hearing handicap inventory for the elderly: A new tool. *Ear Hear* 3:128-134, 1982
39. Wickham H: Ggplot2 Elegant Graphics for Data Analysis. New York, NY, Springer Science, 2009
40. Knight KR, Kraemer DF, Winter C, et al: Early changes in auditory function as a result of platinum chemotherapy: Use of extended high-frequency audiometry and evoked distortion product otoacoustic emissions. *J Clin Oncol* 25: 1190-1195, 2007
41. Knight KR, Kraemer DF, Neuwelt EA: Ototoxicity in children receiving platinum chemotherapy: Underestimating a commonly occurring toxicity that may influence academic and social development. *J Clin Oncol* 23:8588-8596, 2005
42. Knudsen LV, Oberg M, Nielsen C, et al: Factors influencing help seeking, hearing aid uptake, hearing aid use and satisfaction with hearing aids: A review of the literature. *Trends Amplif* 14:127-154, 2010
43. Bertolini P, Lassalle M, Mercier G, et al: Platinum compound-related ototoxicity in children: Long-term follow-up reveals continuous worsening of hearing loss. *J Pediatr Hematol Oncol* 26:649-655, 2004
44. Al-Khatib T, Cohen N, Carret AS, et al: Cisplatin ototoxicity in children, long-term follow up. *Int J Pediatr Otorhinolaryngol* 74:913-919, 2010
45. Kaltenbach JA: Tinnitus: Models and mechanisms. *Hear Res* 276:52-60, 2011
46. Zeng FG: An active loudness model suggesting tinnitus as increased central noise and hyperacusis as increased nonlinear gain. *Hear Res* 295:172-179, 2013
47. Lockwood AH, Salvi RJ, Burkard RF: Tinnitus. *N Engl J Med* 347:904-910, 2002
48. Centers for Disease Control and Prevention: Noise Induced Hearing Loss. Atlanta, GA, CDC, 2015
49. Demeester K, van Wieringen A, Hendrickx J J, et al: Audiometric shape and presbycusis. *Int J Audiol* 48:222-232, 2009
50. Chole RA: Chronic otitis media, mastoiditis, and petrositis, in Flint PW, Haughey BH, Lund VJ, et al (eds): Cummings Otolaryngology: Head and Neck Surgery (ed 6). Philadelphia, PA, Elsevier Mosby, 2015, pp 2139-2155
51. Children's Oncology Group: Long-Term Follow-up Guidelines for Survivors of Childhood, Adolescent and Young Adult Cancer. www.survivorshipguidelines.org/
52. Brock PR, Knight KR, Freyer DR, et al: Platinum-induced ototoxicity in children: A consensus review on mechanisms, predisposition, and protection, including a new International Society of Pediatric Oncology Boston ototoxicity scale. *J Clin Oncol* 30:2408-2417, 2012
53. Biro K, Noszek L, Prekopp P, et al: Characteristics and risk factors of cisplatin-induced ototoxicity in testicular cancer patients detected by distortion product otoacoustic emission. *Oncology* 70:177-184, 2006
54. Cruickshanks KJ, Klein R, Klein BE, et al: Cigarette smoking and hearing loss: The epidemiology of hearing loss study. *JAMA* 279:1715-1719, 1998
55. National Institute of Occupational Safety and Health: Noise and Hearing Loss Prevention. www.cdc.gov/niosh/topics/noise/toolbox.html
56. Occupational Safety & Health Administration: Occupational Noise Exposure. <https://www.osha.gov/SLTC/noisehearingconservation/index.html>
57. National Institute on Deafness and Communication Disorders: Hearing Aids. Bethesda, MD, National Institute on Deafness and Other Communication Disorders, 2016
58. Travis LB, Fossa SD, Sesso HD, et al: Chemotherapy-induced peripheral neurotoxicity and ototoxicity: New paradigms for translational genomics. *J Natl Cancer Inst* 106:1-11, 2014
59. Albers P, Albrecht W, Algaba F, et al: Guidelines on testicular cancer: 2015 Update. *Eur Urol* 68:1054-1068, 2015
60. Hanna NH, Einhorn LH: Testicular cancer—discoveries and updates. *N Engl J Med* 371: 2005-2016, 2014

Support

Supported by National Cancer Institute Grant No. 1 R01 CA157823 (L.B.T.).

AUTHORS' DISCLOSURES OF POTENTIAL CONFLICTS OF INTEREST

Comprehensive Audiometric Analysis of Hearing Impairment and Tinnitus after Cisplatin-Based Chemotherapy in Survivors of Adult-Onset Cancer

The following represents disclosure information provided by authors of this manuscript. All relationships are considered compensated. Relationships are self-held unless noted. I = Immediate Family Member, Inst = My Institution. Relationships may not relate to the subject matter of this manuscript. For more information about ASCO's conflict of interest policy, please refer to www.asco.org/rwc or jco.ascopubs.org/site/ifc.

Robert D. Frisina

Patents, Royalties, Other Intellectual Property: University of South Florida-Tampa: biomedical engineering patents related to hearing loss; not related to cancer

Heather E. Wheeler

No relationship to disclose.

Sophie D. Fossa

No relationship to disclose.

Sarah L. Kerns

No relationship to disclose.

Chunkit Fung

Stock or Other Ownership: GlaxoSmithKline

Consulting or Advisory Role: Janssen Pharmaceuticals, Dendreon, Bayer HealthCare Pharmaceuticals, Novartis

Research Funding: Astellas Pharma (Inst)

Howard D. Sesso

No relationship to disclose.

Patrick O. Monahan

No relationship to disclose.

Darren R. Feldman

Consulting or Advisory Role: Bayer, Gilead Sciences (I), Seattle Genetics

Research Funding: Novartis

Robert Hamilton

Honoraria: Janssen Pharmaceuticals, AbbVie, Bayer HealthCare Pharmaceuticals, Astellas Pharma

Consulting or Advisory Role: Bayer HealthCare Pharmaceuticals

Research Funding: Janssen Pharmaceuticals

David J. Vaughn

Consulting or Advisory Role: Astellas Pharma

Clair J. Beard

No relationship to disclose.

Amy Budnick

No relationship to disclose.

Eileen M. Johnson

No relationship to disclose.

Shirin Ardeshir-Rouhani-Fard

No relationship to disclose.

Lawrence H. Einhorn

No relationship to disclose.

Steven E. Lipshultz

Leadership: Tenet Health Care: board member for clinically integrated network

Honoraria: EuroMeds (honorarium for 2014 Transatlantic En Oncologie Meeting)

Consulting or Advisory Role: Axio Research

Research Funding: Pfizer

Travel, Accommodations, Expenses: Regeneron Pharmaceuticals, Clinigen Group

M. Eileen Dolan

Research Funding: Insys Therapeutics

Expert Testimony: Pfizer

Travel, Accommodations, Expenses: Axiogenesis

Lois B. Travis

No relationship to disclose.

Acknowledgment

Presented in part at the 51st Annual Meeting of the American Society of Clinical Oncology, Chicago, IL, May 29-June 2, 2015. We thank Shannon Salvog, MA (University of South Florida) and M. Lisa Miller (Indiana University) for administrative support.

Appendix

The Platinum Study Group consists of Howard D. Sesso (Brigham and Women's Hospital, Boston, MA); Clair J. Beard and Stephanie Curreri (Dana-Farber Cancer Institute); Lawrence H. Einhorn, Lois B. Travis, Mary Jacqueline Brames, Somer Case-Eads, and Shirin Ardeshir-Rouhani-Fard (Indiana University); Jeri Kim (MD Anderson Cancer Center); Darren R. Feldman, Erin Jacobsen, and Deborah Silber (Memorial Sloan Kettering Cancer Center); Lynn Anson-Cartwright and Robert Hamilton (Princess Margaret Hospital); Nancy J. Cox (Vanderbilt University); M. Eileen Dolan (University of Chicago); David J. Vaughn, Linda Jacobs, Sarah Lena Panzer, and Donna Pucci (University of Pennsylvania); Debbie Baker, Cindy Casaceli, Chunkit Fung, and Eileen Johnson (University of Rochester); Heather E. Wheeler (Loyola University Chicago); and Robert D. Frisina (University of South Florida). The Platinum Study Group Advisory Committee consists of George Bosl (Memorial Sloan Kettering Cancer Center); Sophie D. Fossa (Norwegian Radium Hospital); Mary Gospodarowicz (Princess Margaret Hospital); and Leslie L. Robison (St. Jude Children's Research Hospital). Enrolling sites for the Platinum Study as of April 16, 2015 were Memorial Sloan Kettering Cancer Center, Indiana University, Princess Margaret Hospital, University of Pennsylvania, University of Rochester, and Dana-Farber Cancer Institute.

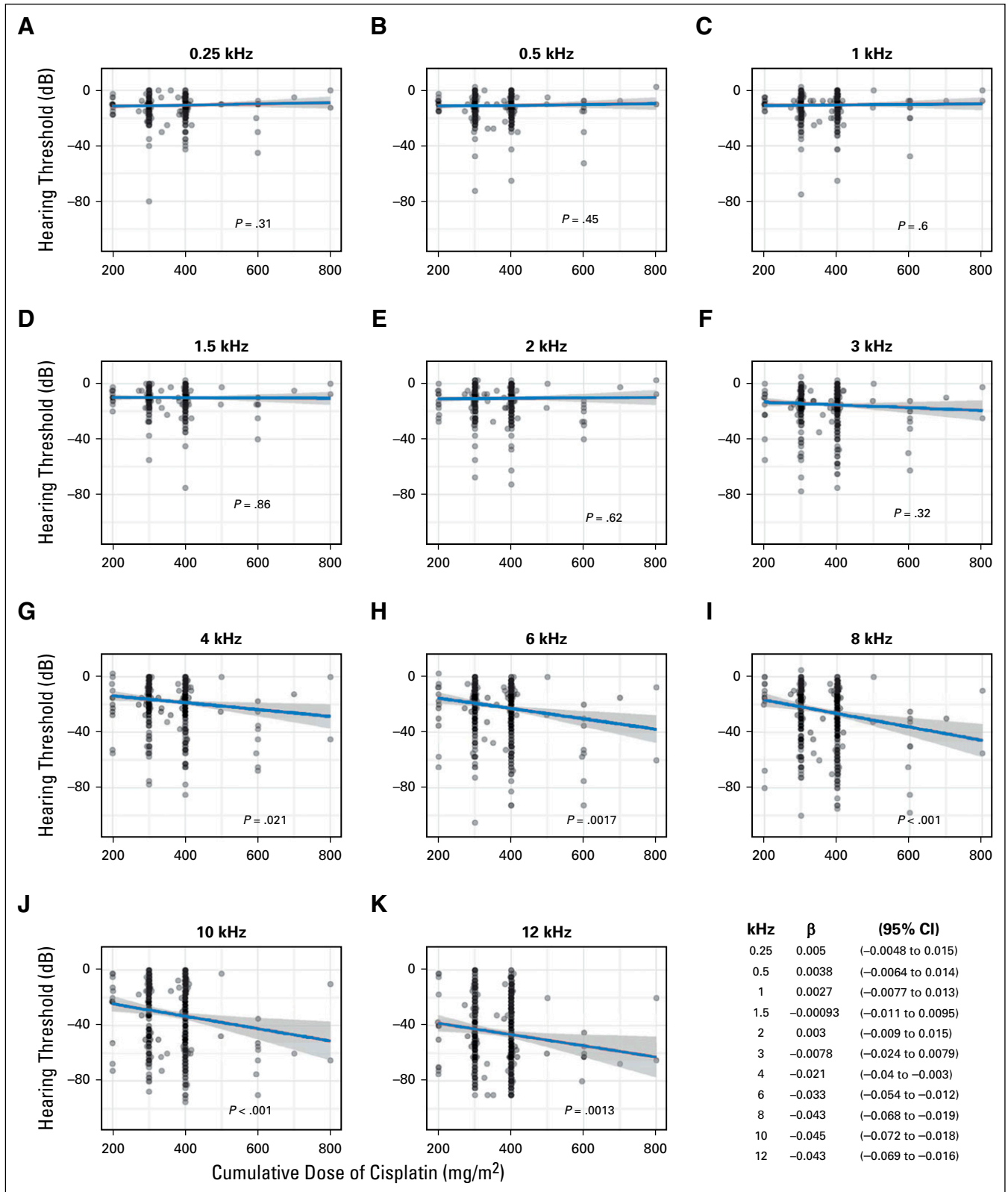


Fig A1. Comparison of hearing thresholds at each audiometric frequency to cumulative dose of cisplatin (mg/m^2). The P value represents the dose term in the following linear regression model: hearing threshold = dose + age at audiometry. The dose term effect size (β) and 95% CIs for each frequency are shown at lower right.