

PRIMARY RESEARCH

Open Access



Altering bioelectricity on inhibition of human breast cancer cells

Seher Berzingi^{1†}, Mackenzie Newman^{2†} and Han-Gang Yu^{2*} 

Abstract

Background: Membrane depolarization is associated with breast cancer. Depolarization-activated voltage-gated ion channels are directly implicated in the initiation, proliferation, and metastasis of breast cancer.

Methods: In this study, the role of voltage-gated potassium and calcium ion channel modulation was explored in two different invasive ductal human carcinoma cell lines, MDA-MB-231 (triple-negative) and MCF7 (estrogen-receptor-positive).

Results: Resting membrane potential is more depolarized in MCF7 and MDA-MB-231 cells compared to normal human mammary epithelial cells. Increasing extracellular potassium concentration up to 50 mM depolarized membrane potential and greatly increased cell growth. Tetraethylammonium (TEA), a non-specific blocker of voltage-gated potassium channels, stimulated growth of MCF7 cells (control group grew by 201 %, 1 mM TEA group grew 376 %). Depolarization-induced calcium influx was hypothesized as a requirement for growth of human breast cancer. Removing calcium from culture medium stopped growth of MDA and MCF7 cells, leading to cell death after 1 week. Verapamil, a blocker of voltage-gated calcium channels clinically used in treating hypertension and coronary disease, inhibited growth of MDA cells at low concentration (10–20 μ M) by 73 and 92 % after 1 and 2 days, respectively. At high concentration (100 μ M), verapamil killed >90 % of MDA and MCF7 cells after 1 day. Immunoblotting experiments demonstrated that an increased expression of caspase-3, critical in apoptosis signaling, positively correlated with verapamil concentration in MDA cells. In MCF7, caspase-9 expression is increased in response to verapamil.

Conclusions: Our results support our hypotheses that membrane depolarization and depolarization-induced calcium influx stimulate proliferation of human breast cancer cells, independently of cancer subtypes. The underlying mechanism of verapamil-induced cell death involves different caspases in MCF7 and MDA-MB-231. These data suggest that voltage-gated potassium and calcium channels may be putative targets for pharmaceutical remediation in human invasive ductal carcinomas.

Keywords: Membrane potential, Voltage-gated calcium channels, Voltage-gated potassium channels, Verapamil, TEA, Caspase-3, Caspase-9

Background

Breast cancer is a leading cancer in women. In 2015, 231,840 new cases of female invasive cases were diagnosed in the US (American Cancer Society, Surveillance Research, 2015). Traditionally, there are three clinical subtypes of breast cancer: estrogen or progesterone

receptor-positive (ER+ or PR+), human epidermal growth factor receptor 2 positive (HER2+), and triple negative (ER–, PR–, HER2–). Recently, based on genetic profiling, revised clinical classifications suggested five subtypes: luminal A, luminal B, basal, claudin-low, and HER2 [1].

Invasive ductal carcinoma (IDC) is the most prevalent type of breast cancer. For this study, we chose to use MCF7 (ER+, PR+, or luminal A) and MDA-MB-231 (triple-negative or claudin-low) cells due to their prevalence in contemporary cancer research,

*Correspondence: hyu@hsc.wvu.edu

[†]Seher Berzingi and Mackenzie Newman contributed equally to this work

²Department of Physiology & Pharmacology, West Virginia University, Morgantown, WV 26506, USA

Full list of author information is available at the end of the article

well-defined characteristics, and similarity to in vivo IDC development when cultured. These two cell lines, along with T-47D, account for over two-thirds of all abstracts on breast cancer growth studies [2]. The MCF7 cell line has become the most widely-used breast cancer line since its establishment in 1973. MDA-MB-231 cells exhibit a more aggressive phenotype in contrast to MCF7 cells [3] and are therefore a model of intractable IDC.

Bioelectrical potentials depend on ion flux in biological cells. Due to an asymmetrical distribution of ions across the plasma membrane, ions constantly flow in and out of cell membranes through their transporters: ion channels, pumps and exchangers [4]. Gating of ion channels results in changes in resting membrane potential which is essential for both normal cell and cancer development [4]. The roles of voltage-gated calcium channels, sodium channels, and potassium channels in cancer cell proliferation, invasion, and metastasis have only recently been demonstrated [4–9].

Breast cancer cells isolated from patients have a resting membrane potential of -13 mV [10]. In normal human mammary epithelial cells (HMEC), the resting membrane potential is -60 mV [10]. Membrane depolarization has been hypothesized to stimulate cell proliferation [4]. Membrane depolarization activates voltage-gated calcium channels and causes an influx of Ca^{2+} through T-type voltage-gated calcium channels in human breast cancer cells [11]. Calcium channels play a pivotal role in proliferation and tumorigenesis of the cell, yet the underlying mechanism is not completely understood [12]. T-type voltage-gated calcium channels have been reported to be overexpressed in MCF7 and play an important role in cell proliferation [13]. Potassium channel blockers such as 4-aminopyridine mimic the effects of calcium channel activators and provide an influx of calcium into the cell [14].

Calcium-triggered apoptosis is a principle pathway that regulates cell growth and death [15]. Apoptosis is mainly but not exclusively triggered by caspases [16]. Breast cancer cells express various isoforms of caspases. Caspase-3 is present in MDA-MB-231, but not in MCF7 cells [17], which express other isoforms such as caspase-9 [18, 19].

To test the hypothesis that altered bioelectricity in cell membranes may be independent of breast cancer subtypes, we investigated the effects of voltage-gated potassium and calcium channel blockers on proliferation of two different breast cancer cell lines, MCF7 and MDA-MB-231. Particularly, we focused on cell death induced by verapamil, a clinically used calcium channel blocker in treatment of hypertension, and its underlying mechanisms.

Methods

Cell culture

Human breast adenocarcinoma cells (ER-positive MCF7 and triple-negative MDA-MB-231) were routinely cultured in Dulbecco's modified eagle's medium (DMEM, invitrogen) containing 10 % fetal bovine serum, 100 IU/mL penicillin, and 100 g/L streptomycin. Normal HMEC (ATCC) were grown in mammary epithelial cell basal medium (MEC), supplemented with MEC growth kit (ATCC). Cells were washed with PBS and media was replaced daily until 90 % confluence was reached. After addition of TEA or verapamil, cells were monitored every 24 h for cell growth and death.

Whole-cell patch clamp measurement of resting membrane potential

For resting membrane potential measurement using whole-cell patch clamp technique, cells were transferred to polylysine-coated coverslips. These were placed in a lucite bath with the temperature maintained at 35 – 37 °C using a temperature control unit (TC2BIP, *Cell MicroControls*). Resting membrane potential (E_m) was recorded using the whole cell patch clamp technique with an Axopatch-700B amplifier. E_m was measured with normal Tyrode's and pipette solutions. The Tyrode's solution contained (in mM): 143 NaCl, 5.4 KCl, 1.8 CaCl_2 , 0.5 MgCl_2 , 0.25 NaH_2PO_4 , and 5 HEPES; pH was adjusted to 7.4 by NaOH. The pipette solution contained (in mM): 120 KCl, 1 CaCl_2 , 5 MgCl_2 , 5 Na_2ATP , 11 EGTA, 10 HEPES, and 11 glucose; pH was adjusted to 7.3 by KOH.

Live cell imaging

Cells in 6-well plates were imaged daily using a Zeiss fluorescent microscope equipped with an AxioCam HRC camera and AxioVision 4.6 imaging software.

Quantification of cells using ImageJ

Fiji ImageJ was used for cell quantification. The image threshold range was set manually for all images using the 'Dark Background' setting. When using the 'Analyze Particles' plugin, a minimum size value of 0.001 pixels² was set to prevent miscounting cell debris as live cells.

Immunoblotting

Protein extracts were prepared after 90 % death was observed. Floating cells were pelleted from the media by centrifugation ($3000\times g$ for 5 min) and then resuspended in lysis buffer (fresh protease and phosphatase inhibitors (Sigma), 20 mM Tris, 150 mM NaCl, 10 mM EGTA and 10 mM EDTA at pH 7.4). Buffer was then added to culture dishes and a cell scraper was used to detach cells. The dishes were allowed to sit for 5 min before cellular debris was centrifuged out of solution. Supernatants

were placed into new tubes and protein concentrations were recorded using Bradford's method on an Eppendorf biophotometer.

For western blotting procedures, protein concentrations were normalized between samples to 20 μg and mixed with non-reducing lane marker (Thermo Fisher) with 5 % β -mercaptoethanol. After heating in a water bath to 95 $^{\circ}\text{C}$ for 5 min, samples were cooled to 4 $^{\circ}\text{C}$ then loaded into a 4–12 % bis-tris gels (Invitrogen). Electrophoresis was carried out at 80 V for 30 min then 160 V for the remainder.

Proteins were transferred to pre-wetted nitrocellulose membranes (0.2 μm pore size) at 30 V for 1 h. Blots were blocked with 3 % bovine serum albumin (BSA) in tris-buffered saline with 0.1 % tween-20 (TBS-T) for 1 h before primary caspase-3 or caspase-9 antibody (1:1000 dilution; cell signaling) was added on a shaker at 4 $^{\circ}\text{C}$ overnight. Primary antibody solution was replaced with fresh 3 % BSA in TBS-T containing secondary antibodies at 1:10,000 dilution for 1 h at room temperature on a shaker. After five washes with TBS-T, blots were developed with a standard ECL kit (Life Technologies) on x-ray film or using a G:BOX digital imaging system (Syngene).

Statistical analysis

Data were presented as mean \pm SEM. Student's *t* test was used to calculate the statistical significance between two groups. ANOVA was used to calculate the statistical significance among multiple groups. Data were considered as statistically significant when $p < 0.05$.

Results

Bioelectricity and cell growth of normal and tumor mammary epithelial cells

Figure 1a compares the resting membrane potential (E_m) in HMEC, MCF7, and MDA-MB-231 cells. MCF7 cells are 30.4 mV more depolarized in comparison to HMEC cells ($E_{m_MCF7} = -36.5 \pm 5.4$ mV, $E_{m_HMEC} = -66.9 \pm 4.4$ mV, $n = 8$, $p < 0.005$). MDA-MB-231 cells are 27.3 mV more positive compared to HMEC ($E_{m_MDA-MB-231} = -39.5 \pm 5.4$ mV, $E_{m_HMEC} = -66.9 \pm 4.4$ mV, $n = 8$, $p < 0.001$). HMEC at days 1 and 5 are shown in Fig. 1b and c, respectively. Compared to day 1, cells grew 1.47 \pm 0.16-fold in HMEC ($n = 4$, $p < 0.05$), 10.33 \pm 2.19-fold in MCF7 ($n = 4$, $p < 0.05$), and 19.93 \pm 3.83-fold in MDA-MB-231 ($n = 4$, $p < 0.05$) (Fig. 1d).

Stimulation of breast cancer cell growth by membrane depolarization

The normal potassium concentration in standard cell culture medium (DMEM) is 5 mM. Altering potassium concentration in DMEM changes membrane potential,

which affected growth of MDA-MB-231 cells (Fig. 2). We started cell culture with approximately the same number of cells on day 1 under different potassium concentrations (Fig. 2a, 5 mM, Fig. 2c, 50 mM). After 5 days, cells grew significantly more in culture containing 50 mM K^+ ions (Fig. 2d) than in culture containing 5 mM K^+ (Fig. 2c). On average, the growth rate was increased by 1.89 ± 0.07 -fold in 50 mM K^+ medium than in 5 mM K^+ medium (growth rate was normalized to 5 mM K^+ , $n = 3$, $p < 0.01$) after 5 days of culture (Fig. 2e).

Voltage-gated potassium channels control the plasma membrane potential and blocking these channels induces membrane depolarization [20]. We used a non-selective potassium channel blocker, TEA, to study the effect of depolarization on growth of MCF7 cells. In the absence of TEA, cells grew 225 % after 4 days in culture (Fig. 3a, b) ($n = 128.2 \pm 12$ at day 0, $n = 416.7 \pm 22$ at day 4, $p < 0.01$, $n = 3$). In the presence of 1 mM TEA, cells grew 4.78 \pm 0.50 fold at day 4 compared to day 0 (normalized) (Fig. 3c–e, $n = 3$, $p < 0.01$). These results indicate that changes in membrane potential have significant effects on growth rate of breast cancer cells.

Calcium as a key modulator in breast cancer cell growth

To understand how depolarized membranes can stimulate growth of breast cancer cells, we studied the effect of calcium ions on cell proliferation. After 5 days, MCF7 cells barely grew in the absence of Ca^{2+} ions in the culture medium (Fig. 4b) compared with cells growing to nearly 100 % confluence in medium that contains 2 mM Ca^{2+} ions (Fig. 4a). The average cell population growth in the absence and presence of Ca^{2+} ions is shown in 4C for MCF7 and in 4D for MDA-MB-231, respectively. Cell numbers at day 1 were normalized (Fig. 4c, d). In normal DMEM containing Ca^{2+} , MCF7 cells grew 2.5 \pm 0.07-fold at day 2, 4.56 \pm 0.13 at day 3, 9.55 \pm 0.28-fold at day 4, 20.78 \pm 0.60-fold at day 5, and 34.83 \pm 1.01-fold at day 6; and MDA-MB-231 cells grew 2.03 \pm 0.06-fold at day 2, 3.87 \pm 0.11-fold at day 3, 7.66 \pm 0.22-fold at day 4, 13.71 \pm 0.40-fold at day 6, and 19.93 \pm 0.58-fold at day 6. In the absence of external Ca^{2+} , cells barely grew (Fig. 4c, dark bars) or grew in a significantly slower rate compared to that with Ca^{2+} (Fig. 4d, dark bars). These results indicate the essential requirement of external Ca^{2+} ions during growth of breast cancer cells.

External Ca^{2+} ions can be blocked from entering the cell specifically through voltage-gated calcium channels [11] with verapamil. Figure 5a shows MDA-MB-231 cells grown in normal medium without verapamil. After 1 day of incubation with 10 μM verapamil, cell number dramatically decreased (Fig. 5b). Figure 5c shows the growth of MDA-MB-231 cells at day 2 and 3 under different concentrations of verapamil. Compared to the absence of

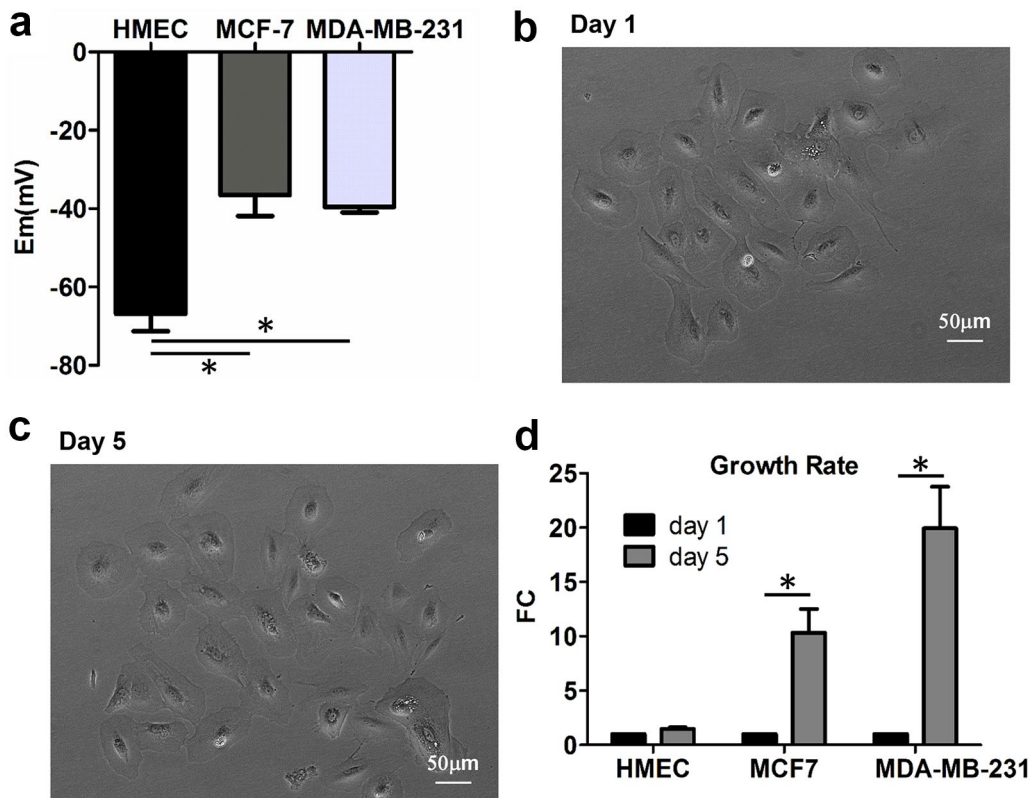


Fig. 1 Bioelectricity and cell growth. **a** Resting membrane potential (E_m) in HMEC, MCF7, and MDA-MB-231, $n = 10$ for each group. **b** HMEC at day 1. **c** HMEC at day 5. **d** Cell growth at day 5 compared to day 1 (normalized) for HMEC, MCF7, and MDA-MB-231. $n = 4$ for each group. FC fold change. Asterisk indicates statistical significance

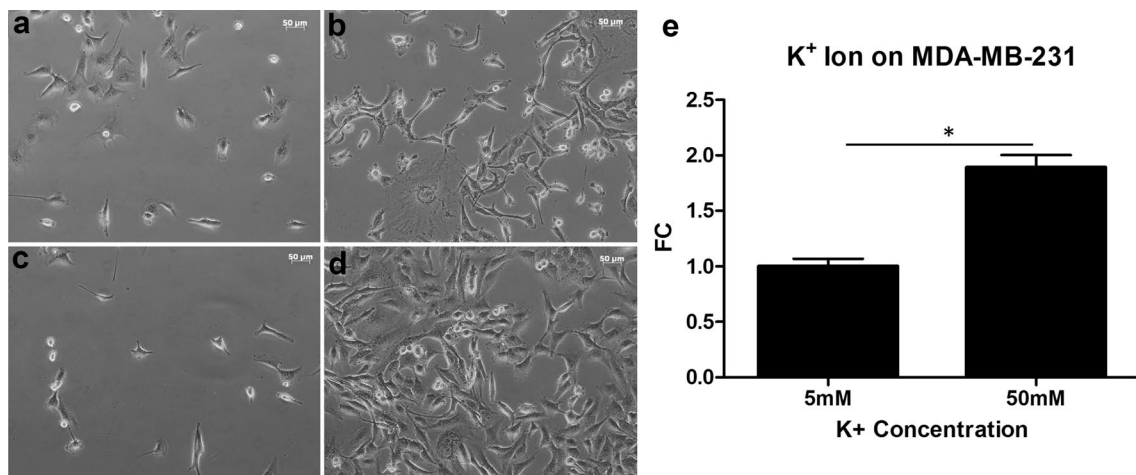


Fig. 2 Effect of increased K^+ concentration on MDA-MB-231 cell growth. MDA-MB-231 cell growth in the presence of 5 mM K^+ at day 1 (**a**) and day 6 (**b**), and in the presence of 50 mM K^+ at day 1 (**c**) and day 6 (**d**). Averaged cell growth of MDA-MB-231 cell populations in different concentrations of K^+ (**e**). FC fold change. Asterisk indicates statistical significance

verapamil (0 μ M), verapamil inhibited cell growth by 74 % at 10 μ M and 92 % at 20 μ M, respectively ($n = 3$, $p < 0.01$). Figure 5d shows inhibited growth of MCF7 cells

by verapamil. At day 3, verapamil inhibited cell growth by 49 % at 10 μ M and 85 % at 20 μ M, respectively ($n = 3$, $p < 0.05$).

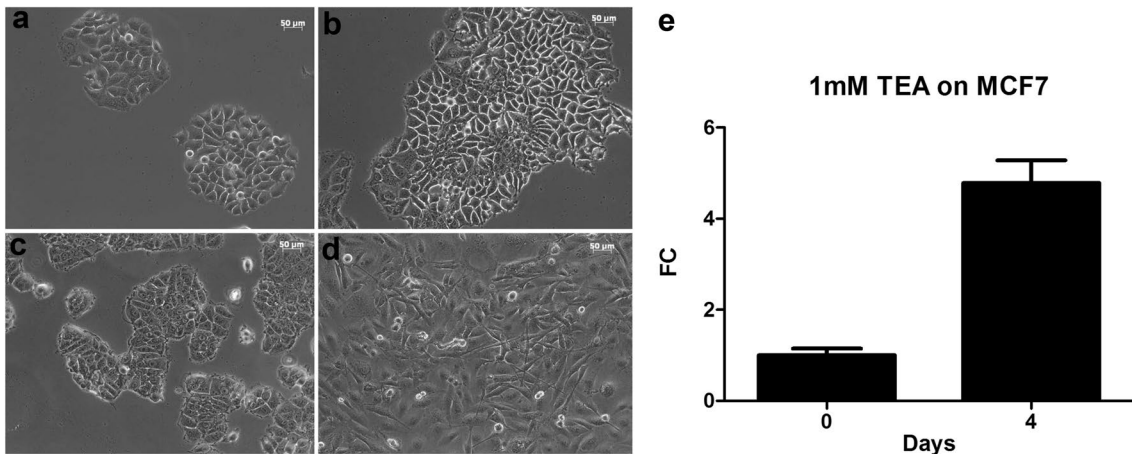


Fig. 3 Effect of TEA on MCF7 cell growth. MCF7 cell growth in the presence of 1 mM TEA at day 0 (a) and day 4 (b), and in the presence of 1 mM TEA at day 0 (c) and day 4 (d) of growth. Averaged cell growth of MCF7 cells with 1 mM TEA at days 0 and 0 (e). FC fold change

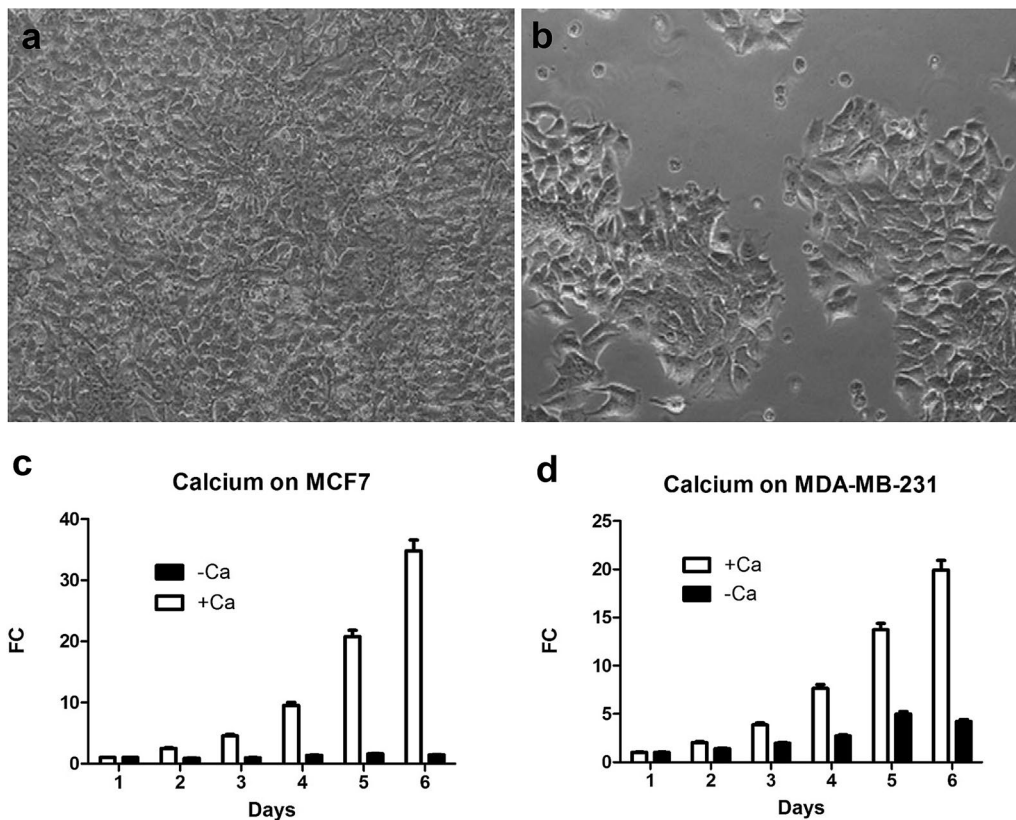


Fig. 4 Effect of Ca^{2+} on MCF7 and MDA-MB-231 cell growth. MCF7 cell growth in the presence of Ca^{2+} (a) and in the absence of Ca^{2+} (b). Averaged cell growth of MCF7 (c) and MDA-MB-231 (d) in the absence and presence of Ca^{2+} . FC fold change

Mechanism of verapamil-induced death in breast cancer cells

One common cellular mechanism associated with

calcium in cell death is the caspase signaling pathway [15]. Among the many caspases in breast cancer cells, we focused on caspase-3 not only because it is the principle

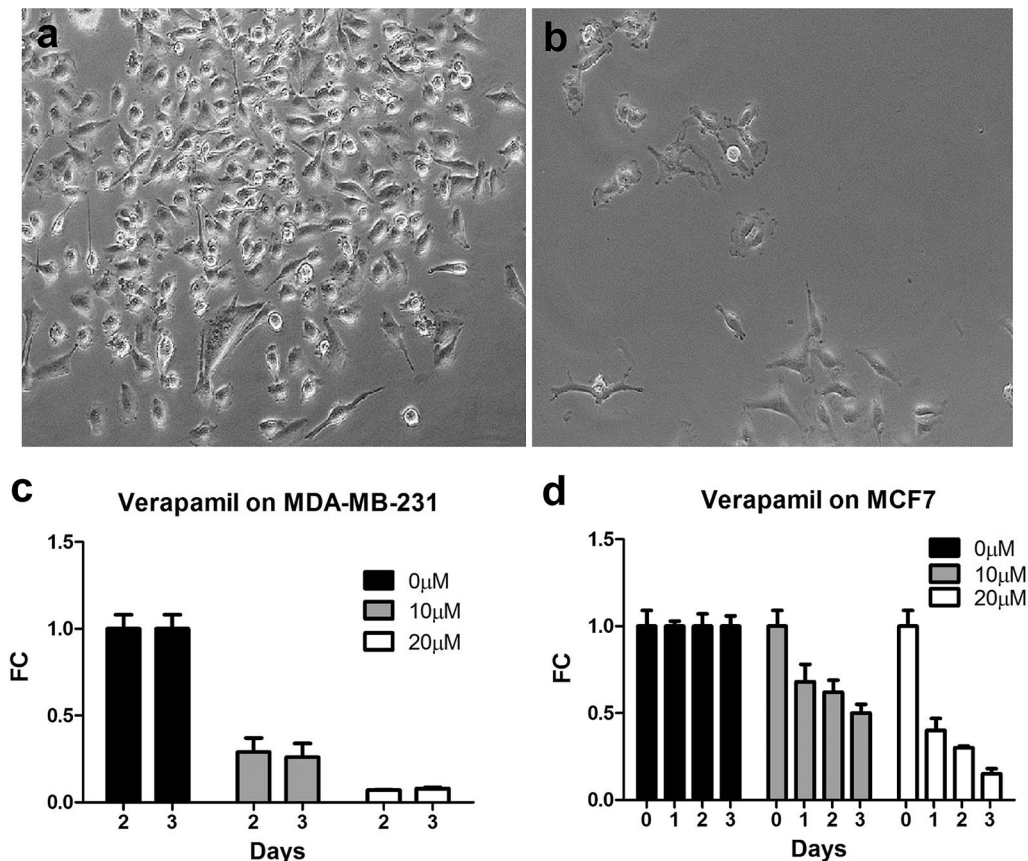


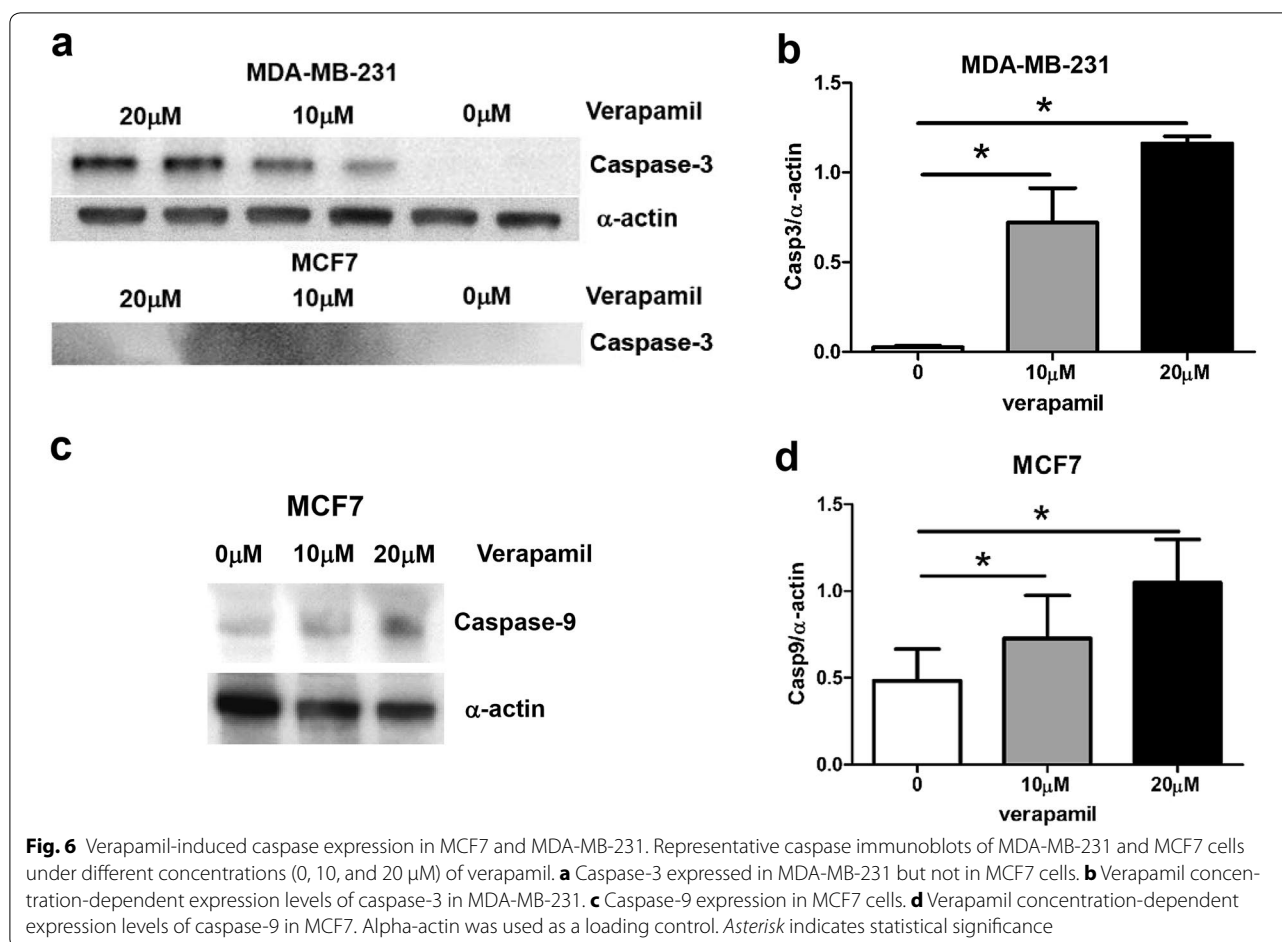
Fig. 5 Effect of verapamil on MCF7 and MDA-MB-231 cell growth. MDA-MB-231 cell growth in the presence of 10 μM verapamil at day 5 (a) and day 6 (b). Verapamil was added on day 5. Averaged cell growth of MDA-MB-231 (c) and MCF7 (d) for different concentrations of verapamil. Growth rate was normalized at 0 μM verapamil. FC fold change

caspase in caspase family [21], but also since it is present in MDA-MB-231 but not in MCF7 cells [17].

Figure 6 shows the representative western blots for caspase levels in MCF7 and MDA-MB-231 cells. The levels of protein expression of caspase-3 were increased by verapamil in a concentration-dependent manner in MDA-MB-231, whereas no caspase-3 protein expression was detected in MCF7 cells (Fig. 6a). In comparison to the absence of verapamil, α -actin normalized caspase-3 levels are increased by 28-fold in 10 μM verapamil (0 μM = 0.026 ± 0.007 , 10 μM = 0.72 ± 0.19 , $n = 3$, $p < 0.05$) and 45-fold in 20 μM verapamil (0 μM = 0.026 ± 0.007 , 20 μM = 1.16 ± 0.04 , $n = 3$, $p < 0.001$) (Fig. 6b). In MCF7 cells the caspase-9 levels are increased after verapamil treatment (Fig. 6c). In comparison to the absence of verapamil, α -actin normalized caspase-9 levels are increased by 1.9-fold in 10 μM verapamil (0 μM = 0.42 ± 0.12 , 10 μM = 0.79 ± 0.20 , $n = 3$), but insignificantly ($p > 0.05$), and 2.6-fold in 20 μM verapamil (0 μM = 0.42 ± 0.12 , 20 μM = 1.11 ± 0.19 , $n = 3$, $p < 0.05$) (Fig. 6d).

Discussion

Depolarized membrane potential has recently been recognized as a potential novel bioelectrical marker of cancer cells [22, 23]. In this study, we explored the notion that the intrinsic association of membrane potential and breast cancer growth is independent of breast cancer subtypes. We tested the idea using two different types of human breast cancer cell lines, an ER+ MCF7 and a triple-negative MDA-MB-231. We attempted to address a specific question: if membrane depolarization is indeed associated with cell growth of breast cancer cells, what mediates the membrane depolarization and proliferation of breast cancer cells? Alterations of ion channel expression and activities are associated with the initiation, proliferation, and metastasis of cancer cells [5, 8]. Voltage-gated calcium channels are present in human breast cancer cells but not in normal human mammary epithelial cells [13]. Therefore, we focused on voltage-gated potassium and calcium channels as potential underlying mechanisms that link membrane depolarization and breast cancer growth.



We showed that membrane potentials of MCF7 and MDA-MB-231 are depolarized in comparison to that of normal human mammary epithelial cells. HMEC grew much slower compared to MCF7 and MDA-MB-231. These results are consistent with previous reports that demonstrated the association between membrane potential and breast cancer patients [10].

Second, we showed that membrane depolarization, induced by increasing external potassium concentration or blocking voltage-gated potassium channels, stimulated growth of MCF7 and MDA-MB-231 cells. Third, we demonstrated that calcium is essential for growth of MCF7 and MDA-MB-231 since removing external calcium led to death of both types of cells. These results are consistent with the essential role of calcium in cell growth and cancer development [24]. Fourth, we observed reduced proliferation and death of MCF7 and MDA-MB-231 cells by verapamil, reinforcing the role of calcium entry through voltage-gated calcium channels during the growth of breast cancer cells. We noticed that verapamil inhibited growth of MDA-MB-231 to the similar degree at days 2 and 3 (Fig. 4c), but it appears there is

time-dependent inhibition of verapamil on cell growth of MCF7 (Fig. 4d).

To understand the underlying mechanisms of verapamil-induced cell death in breast cancer cells, we explored the potential role of caspase signaling, known to be integral in calcium-induced apoptosis [15]. We found that the caspase-3 levels in MDA-MB-231 cells were significantly increased during chronic exposure to verapamil. In MCF7, no protein expression of caspase-3 was detected (Fig. 6a). Rather, caspase-9 protein levels are increased in response to verapamil treatment (Fig. 6c). It is imperative to emphasize that caspase-9 may not be the main mechanism that mediates the apoptotic effect of verapamil on MCF7, since the increase in its protein levels is small (Fig. 6d) compared to verapamil-induced increase in caspase-3 in MDA-MB-231 (Fig. 6b). Other caspases, such as caspase-6 and caspase-7, might be more important in mediating the verapamil-induced cell death in MCF7 [18, 19]. Additionally, there exists caspase-independent apoptosis in both MCF7 and MDA-MB-231 cells [25–27]. Therefore, the exact mechanisms that mediate verapamil-induced apoptosis require more investigation.

A recent study demonstrated that depolarized membrane potential increases the clustering of phosphatidylserine lipids and K-Ras, promoting RAF-MAPK signaling, which is known to induce proliferation of cancer cells [22, 28, 29]. This mechanism has yet to be validated with regard to intracellular calcium homeostasis in the breast cancer cell culture models used in our study.

Conclusions

Collectively, we showed that membrane potential depolarization occurs in breast cancer cells, independent of subtypes. Verapamil, a voltage-gated calcium channel blocker which is clinically used to treat hypertensive patients can induce cell death in both MCF7 and MDA-MB-231. However, cellular mechanisms that mediate verapamil-induced inhibition of breast cancer cells are different and likely subtype-specific.

Abbreviations

TEA: tetraethylammonium; ER: estrogen receptor; PR: progesterone receptor; HER2: human epidermal growth factor receptor 2; IDC: invasive ductal carcinoma; HMEC: human mammary epithelial cells; DMEM: Dulbecco's modified eagle's medium; RAF: rapidly accelerated fibrosarcoma; MAPK: mitogen-activated protein kinase; BSA: bovine serum albumin; TBS-T: tris-buffered saline with 0.1 % tween-20.

Authors' contributions

SB and MN performed experiments and data analysis, and provided critical reading and editing the manuscript. HGY designed the experiments and wrote the manuscript. All authors read and approved the final manuscript.

Author details

¹ Department of Biology, West Virginia University, Morgantown, WV 26506, USA. ² Department of Physiology & Pharmacology, West Virginia University, Morgantown, WV 26506, USA.

Acknowledgements

We thank Mr. Amine Feliachi for technical assistance in patch clamp experiments.

Competing interests

The authors declare that they have no competing interests.

Availability of data and material

Data sharing not applicable to this article as no datasets were generated or analyzed during the current study.

Ethics approval and consent to participate

Use of human breast cancer cell lines, MCF7 and MDA-MB-231, and the healthy control mammary epithelial cells (HMEC) were approved by West Virginia University Institutional Biosafety Committee (IBC protocol# 14-02-02).

Funding

This work has been supported by National Institute of General Medical Sciences (P20GM103434, U54GM104942), American Heart Association (13GRNT16420018), and the Office of Research and Graduate Programs/Health Sciences Center at West Virginia University.

Received: 1 March 2016 Accepted: 16 September 2016

Published online: 22 September 2016

References

- Holliday DL, Speirs V. Choosing the right cell line for breast cancer research. *Breast Cancer Res.* 2011;13(4):1–7.
- Lacroix M, Leclercq G. Relevance of breast cancer cell lines as models for breast tumours: an update. *Breast Cancer Res Treat.* 2004;83(3):249–89.
- Gozgit JM, Pentecost BT, Marconi SA, Otis CN, Wu C, Arcaro KF. Use of an aggressive MCF-7 cell line variant, TMX2-28, to study cell invasion in breast cancer. *Mol Cancer Res.* 2006;4(12):905–13.
- Levin M. Molecular bioelectricity in developmental biology: new tools and recent discoveries: control of cell behavior and pattern formation by transmembrane potential gradients. *BioEssays.* 2012;34(3):205–17.
- Prevarskaya N, Skryma R, Shuba Y. Ion channels and the hallmarks of cancer. *Trends Mol Med.* 2010;16(3):107–21.
- Fraser SP, Pardo LA. Ion channels: functional expression and therapeutic potential in cancer. *Colloquium on ion channels and cancer. EMBO Rep.* 2008;9(6):512–5.
- Djamgoz MB, Coombes RC, Schwab A. Ion transport and cancer: from initiation to metastasis. *Philos Trans R Soc Lond B Biol Sci.* 2014;369(1638):20130092.
- Arcangeli A, Crociani O, Lastraioli E, Masi A, Pillozzi S, Becchetti A. Targeting ion channels in cancer: a novel frontier in antineoplastic therapy. *Curr Med Chem.* 2009;16(1):66–93.
- Cuddapah VA, Sontheimer H. Ion channels and transporters [corrected] in cancer. 2. Ion channels and the control of cancer cell migration. *Am J Physiol Cell Physiol.* 2011;301(3):C541–9.
- Marino AA, Iliev IG, Schwalke MA, Gonzalez E, Marler KC, Flanagan CA. Association between cell membrane potential and breast cancer. *Tumour Biol.* 1994;15(2):82–9.
- Azimi I, Roberts-Thomson SJ, Monteith GR. Calcium influx pathways in breast cancer: opportunities for pharmacological intervention. *Br J Pharmacol.* 2014;171(4):945–60.
- Coogan PF. Calcium-channel blockers and breast cancer: a hypothesis revived. *JAMA Int Med.* 2013;173(17):1637–8.
- Taylor JT, Huang L, Pottle JE, Liu K, Yang Y, Zeng X, Keyser BM, Agrawal KC, Hansen JB, Li M. Selective blockade of T-type Ca²⁺ channels suppresses human breast cancer cell proliferation. *Cancer Lett.* 2008;267(1):116–24.
- Alkadhi KA, Simples JE Jr. Effects of inorganic potassium channel blockers on calcium requirement of transmission in a sympathetic ganglion. *J Auton Nerv Syst.* 1991;34(2–3):221–9.
- Orrenius S, Zhivotovsky B, Nicotera P. Regulation of cell death: the calcium-apoptosis link. *Nat Rev Mol Cell Biol.* 2003;4(7):552–65.
- Hanahan D, Weinberg RA. The hallmarks of cancer. *Cell.* 2000;100(1):57–70.
- Looi CY, Arya A, Cheah FK, Muharram B, Leong KH, Mohamad K, Wong WF, Rai N, Mustafa MR. Induction of apoptosis in human breast cancer cells via caspase pathway by vernodalin isolated from *Centratherum anthelminticum* (L.) Seeds. *PLoS ONE.* 2013;8(2):e56643.
- Zoli W, Ulivi P, Tesei A, Fabbri F, Rosetti M, Maltoni R, Giunchi DC, Ricotti L, Brigliadori G, Vannini I, et al. Addition of 5-fluorouracil to doxorubicin-paclitaxel sequence increases caspase-dependent apoptosis in breast cancer cell lines. *Breast Cancer Res.* 2005;7(5):R681–9.
- Liang Y, Yan C, Schor NF. Apoptosis in the absence of caspase 3. *Oncogene.* 2001;20(45):6570–8.
- Post JM, Hume JR, Archer SL, Weir EK. Direct role for potassium channel inhibition in hypoxic pulmonary vasoconstriction. *Am J Physiol.* 1992;262(4 Pt 1):C882–90.
- Porter AG, Janicke RU. Emerging roles of caspase-3 in apoptosis. *Cell Death Differ.* 1999;6(2):99–104.
- Chernet BT, Levin M. Transmembrane voltage potential is an essential cellular parameter for the detection and control of tumor development in a Xenopus model. *Dis Model Mech.* 2013;6(3):595–607.
- Yang M, Brackenbury WJ. Membrane potential and cancer progression. *Front Physiol.* 2013;4:185.
- Monteith GR, McAndrew D, Faddy HM, Roberts-Thomson SJ. Calcium and cancer: targeting Ca²⁺ transport. *Nat Rev Cancer.* 2007;7(7):519–30.
- Chou CC, Wu YC, Wang YF, Chou MJ, Kuo SJ, Chen DR. Capsaicin-induced apoptosis in human breast cancer MCF-7 cells through caspase-independent pathway. *Oncol Rep.* 2009;21(3):665–71.
- Sareen D, Darjatmoko SR, Albert DM, Polans AS. Mitochondria, calcium, and calpain are key mediators of resveratrol-induced apoptosis in breast cancer. *Mol Pharmacol.* 2007;72(6):1466–75.

27. Kim E-A, Jang J-H, Lee Y-H, Sung E-G, Song I-H, Kim J-Y, Kim S, Sohn H-Y, Lee T-J. Dioscin induces caspase-independent apoptosis through activation of apoptosis-inducing factor in breast cancer cells. *Apoptosis*. 2014;19(7):1165–75.
28. Accardi A. CELL SIGNALING. Lipids link ion channels and cancer. *Science*. 2015;349(6250):789–90.
29. Zhou Y, Wong CO, Cho KJ, van der Hoeven D, Liang H, Thakur DP, Luo J, Babic M, Zinsmaier KE, Zhu MX, et al. SIGNAL TRANSDUCTION. Membrane potential modulates plasma membrane phospholipid dynamics and K-Ras signaling. *Science*. 2015;349(6250):873–6.

Submit your next manuscript to BioMed Central
and we will help you at every step:

- We accept pre-submission inquiries
- Our selector tool helps you to find the most relevant journal
- We provide round the clock customer support
- Convenient online submission
- Thorough peer review
- Inclusion in PubMed and all major indexing services
- Maximum visibility for your research

Submit your manuscript at
www.biomedcentral.com/submit

