

SCIENTIFIC REPORTS



OPEN

Coffee and cancer risk: A meta-analysis of prospective observational studies

Received: 13 April 2016
Accepted: 01 September 2016
Published: 26 September 2016

Anqiang Wang^{1,*}, Shanshan Wang^{1,*}, Chengpei Zhu^{2,*}, Hanchun Huang¹, Liangcai Wu¹, Xueshuai Wan¹, Xiaobo Yang¹, Haohai Zhang¹, Ruoyu Miao³, Lian He¹, Xinting Sang¹ & Haitao Zhao¹

Meta-analyses on coffee and cancer incidence mainly restricted to limited cancers. We carried out a more comprehensive meta-analysis of cohort studies to explore association between coffee and most cancer types. We conducted comprehensive search and summarized relative risk (RR) and 95% confidence intervals for the highest versus lowest coffee intake and cancer using STATA12. We conducted dose-analysis if result suggested significant association. The publication bias was evaluated with begg's and egger's test. Finally, 105 individual prospective studies were included. Inverse associations were observed on oral, pharyngeal, colon, liver, prostate, endometrial cancer and melanoma, with RR 0.69 (95% CI = 0.48–0.99, $I^2 = 73.4\%$, $P = 0.044$), 0.87 (95% CI = 0.78–0.96, $I^2 = 28.4\%$, $P = 0.007$), 0.46 (95% CI = 0.37–0.57, $I^2 = 0\%$, $P = 0$), 0.89 (95% CI = 0.84–0.93, $I^2 = 30.3\%$, $P = 0.003$), 0.73 (95% CI = 0.67–0.80, $I^2 = 0\%$, $P = 0$) and 0.89 (95% CI = 0.80–0.99, $I^2 = 0\%$, $P = 0.031$) respectively. However, the relative risk for lung cancer is 2.18 (95% CI = 1.26–3.75, $I^2 = 63.3\%$, $P = 0.005$). The summary relative risk for increment of 2 cups of coffee were RR = 0.73, 95% CI = 0.67–0.79 for liver cancer, RR = 0.97, 95% CI = 0.96–0.98 for prostate cancer and RR = 0.88, 95% CI = 0.85–0.92 for endometrial cancer. Accordingly, coffee intake was associated with reduced risk of oral, pharynx, liver, colon, prostate, endometrial cancer and melanoma and increased lung cancer risk.

Cancer is a major cause of morbidity and mortality worldwide. In 2012^{1,2}, there were 14.1 million new cancer cases and 8.2 million cancer deaths globally and the global burden from cancer has become significantly high. Although the strategy for cancer treatment has improved much, cancer is still the most difficult disease to overcome. Early diagnosis and treatment may provide good chance for cancer patients to improve overall prognosis. However, there is no promising survival for those who suffer from advanced cancer. Therefore, it is important to determine methods to prevent tumor occurrence. Nutrition, such as the consumption of citrus fruits, vegetables, and coffee, has also been considered to play an important role in reducing cancer risk^{3–5}.

Coffee is one of the most popular beverages worldwide, and it has been speculated to decrease the risk of many types of cancers. Coffee is a complex mixture of many biologically active components, some of which may have anti-tumor effects. They include caffeine, cafestol, kahweol, and chlorogenic acid. Although many standardized meta-analyses^{5–18} between coffee intake and various cancers have been conducted, most of analyses restricted to limited types of cancers. In addition, there is no relevant meta-analysis to explore relationships between coffee intake and some types of cancer including melanoma and lymphoma. Furthermore, dose-response meta-analyses were only performed for liver cancer and prostate cancer^{19,20}, we endeavor to conduct such analysis for cancer as many as possible. Besides, most meta-analyses included prospective studies and case-control studies, which may lead to the unconvincing results and conclusions. However, we included prospective studies into our study. In order to present the relatively obvious associations between coffee intake and the incidence of most of cancer types, we carried out a more comprehensive systematic updated meta-analysis of cohort studies to explore the

¹Department of Liver Surgery, Peking Union Medical College Hospital, Chinese Academy of Medical Sciences and Peking Union Medical College, Beijing, China. ²Department of General Surgery, Tianjin Third Central Hospital, Tianjin Institute of Hepatobiliary Disease, Tianjin Key Laboratory of Artificial Cell, Tianjin, China. ³Liver Center and The Transplant Institute, Department of Medicine, Beth Israel Deaconess Medical Center, Harvard Medical School, Boston, MA, USA. *These authors contributed equally to this work. Correspondence and requests for materials should be addressed to X.S. (email: sangxt@pumch.cn) or H.Z. (email: ZhaoHT@pumch.cn)

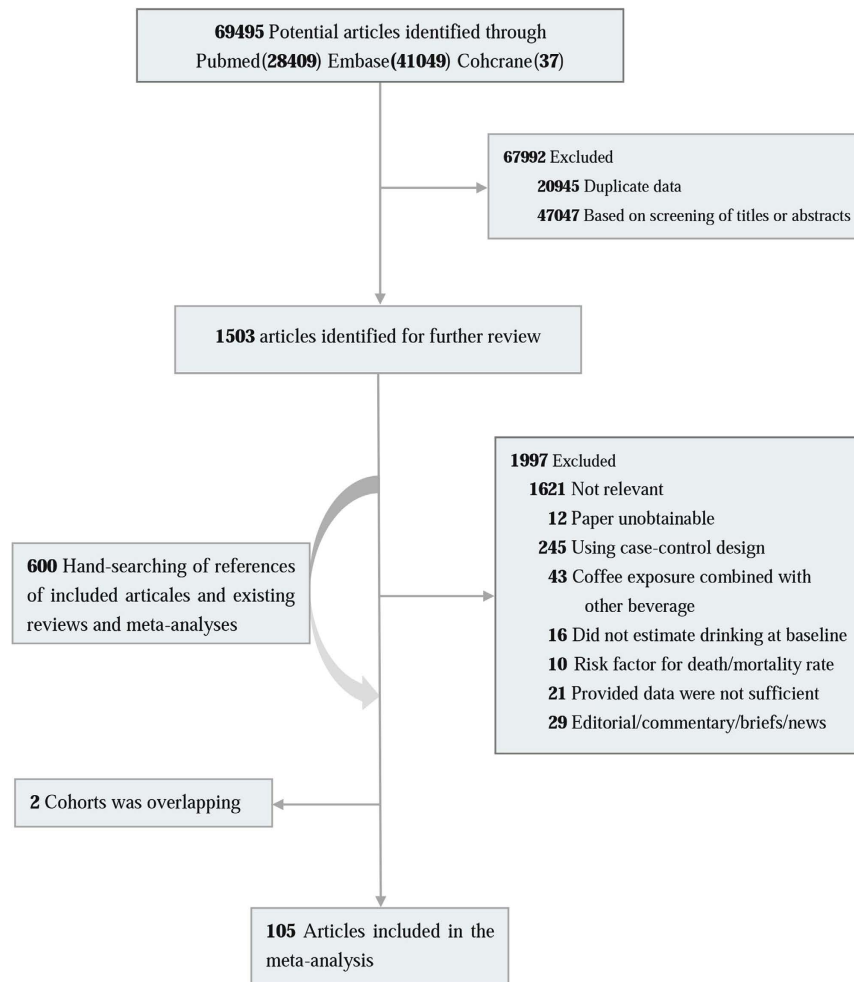


Figure 1. Flowchart of the searching and review of literatures.

association between coffee consumption and most types of cancers. We try to provide a landscape of coffee and cancer incidence.

Methods

Search strategy. We conducted a computerized search of the literature on coffee and cancer from inception to July 2015. The search terms were (cancer OR tumor OR carcinoma) AND (coffee OR caffeine OR beverages OR diet OR drinking). Three major electronic databases (PubMed, EMBASE, and The Cochrane Library) were used to search the relevant literature without language restriction. Then, we classified these studies into different groups according to cancer type and conducted repeated searches. Finally, we obtained a relatively complete literature record for every type of cancer. Moreover, we reviewed the references from retrieved articles for additional studies (Fig. 1).

Study selection. The included studies had to be prospective cohort, case-cohort, or nested case control studies and had to contain the association between coffee intake and cancer incidence. Case control studies and cross-sectional studies were excluded. Studies concerning the coffee intake and the mortality of cancer were also excluded. We also excluded the analysis about cancer if there was no enough to conduct meta-analysis or no updated prospective studies for previous meta-analysis. Each study had to provide estimates of hazard ratio (HR) or relative risk (RR) with 95% confidence intervals or numbers of cases and controls to calculate those values. For cancers for which a dose-response analysis could be conducted, the quantitative measure of intake and the total number of cases and person years or relative information to calculate them were necessary. Two independent reviewers evaluated the eligibility of every study in a standardized manner. We resolved disagreements by consensus.

Data abstraction. We extracted data from each study. These data included the first author's name, year of publication, country of origin, number of cases and participants, sex, age, types of cancer, duration of follow-up and comparison of exposure level and adjusted confounding variables. The relative risks or hazard ratio and 95% confidence intervals for the highest versus the lowest intake were also extracted.

Statistical analysis. We summarized the overall relative risk and 95% confidence intervals for the highest versus lowest intake of coffee and various cancers using the fixed or random effects models of STATA12 (StataCorp, College Station, TX, USA). The command is `metan logrr loglci loguci, eform label(namevar = study) fixed/random xlabel(), effect(RR)`. `Metareg logrr study, wsse(se)`. The fixed and random effects models were conducted when there were no or low heterogeneity and medium or high heterogeneity, respectively. For studies that reported results by cancer type or sex, we combined them using fixed effects models. For studies that provided no relative risks and 95% confidence intervals, we calculated these values based on the number of cases and controls.

We conducted dose-response analyses for coffee and some types of cancers rather than all tumor types. When the summary RR indicates a significant association between coffee intake and cancer risk, we would conduct dose-response analysis for these types of cancers. Furthermore, the included studies for dose-response analysis had to be three at least. According to a previously described method^{21,22}, information was required, such as the distribution of cases and person-years, variance of exposure levels and relative risks for at least three quantitative categories. The number of person-years was approximated from follow-up duration and number of subjects if the studies did not provide these values. We assigned the mid-point of the corresponding range of coffee intake as the exposure value in each category. When the highest category was open-ended, we assumed the width of the interval to be the same as the adjacent interval. When the lowest category was open-ended, we assigned zero as the lower boundary²². If coffee intake was reported as weeks or months instead of days, we computed the corresponding days. If coffee intake was not measured in cups, we used 150 ml²³ as a cup to recalculate the intakes to a common scale. We present the dose-response results for a two-cup daily increment of coffee consumption. Using restricted cubic splines with four knots at percentiles 5%, 35%, 65% and 95% of the distribution; we evaluated the curve linear relation between coffee intake and risks of liver cancer, prostate cancer and endometrial cancer. The P value was calculated to test the null hypothesis that the coefficients of the second and third splines are equal to zero^{24,25}. According to the result, we conducted linear or non-linear dose-response analysis.

We used the I^2 value to evaluate if heterogeneity could be explained by study differences rather than by chance²⁶. I^2 -values of approximately 25%, 50%, and 75% indicate low, moderate and high heterogeneity. We did not use scores to assess the quality of the studies. Instead, we conducted subgroup analyses to evaluate the impact on overall RRs by cancer type, sex, follow-up period and some adjusted confounders, such as alcohol and BMI. Moreover, when the number of included studies was more than 10 and a substantial heterogeneity was observed, we would conduct subgroup analysis and meta-regression analysis to explore the potential source of heterogeneity. Furthermore, when the number of included studies was more than 10 and a substantial heterogeneity was observed, we would conduct subgroup analysis and meta-regression analysis to explore the potential source of heterogeneity.

We evaluated publication bias using Begg's²⁷ and Egger's²⁸ tests, with obvious publication bias suspected when $P < 0.10$. And we conducted a Trim and fill analysis²⁹ to assess the stability of overall relative risk when the results suggested obvious publication bias. We conducted all of the statistical analyses using Stata Statistical Software, version 12.0.

Results

Digestive system cancer. *Oral, pharynx cancer.* Highest versus lowest intake. Six cohort studies^{30–35} were included in the analysis (1395309 samples) of the highest versus lowest intake of coffee and oral, pharynx cancer. The study characteristics are presented (Table 1a). The summary RR was 0.69 (95% CI = 0.48–0.99, $P = 0.044$) with high heterogeneity ($I^2 = 73.4\%$, $P = 0.002$) (Fig. 2A). The results suggest no publication bias, with $P = 1$ for Begg's test and $P = 0.98$ for Egger's test. The subgroup analysis indicated that the inverse association was observed between coffee consumption and oral, pharynx cancer incidence in Asia and follow-up (>10 years) subgroup. The same relationship was observed in smoking adjustment subgroup, physical activity adjustment subgroup and total energy adjustment subgroup (Table 1b).

Esophageal cancer. Highest versus lowest intake. Six cohort studies^{30,32–34,36,37} were included in the analysis (1395309 samples) of the highest versus lowest intake of coffee and esophageal cancer. The study characteristics are presented (Table 1a). The summary RR was 0.86 (95% CI = 0.71–1.04, $P = 0.124$) with no heterogeneity ($I^2 = 0\%$, $P = 0.64$) (Fig. 3A). The results suggest no publication bias, with $P = 1$ for Begg's test and $P = 0.69$ for Egger's test. The subgroup analysis suggested that no significant association was observed between coffee intake and esophageal cancer incidence in each subgroup (Table 1b).

Stomach cancer. Highest versus lowest intake. Twelve cohort studies^{30,31,33,38–46} were included in the analysis (1305447 samples) of the highest versus lowest intake of coffee and stomach cancer. The study characteristics are presented (Table 1a). The summary RR was 1.15 (95% CI = 0.96–1.37, $P = 0.121$) with medium heterogeneity ($I^2 = 49.2\%$, $P = 0.027$) (Fig. 3B). The results suggest no publication bias, with $P = 0.63$ for Begg's test and $P = 0.85$ for Egger's test. The subgroup analysis indicated that coffee intake was associated with increased stomach cancer in USA and Asia. The same relationship was also observed in small number cases subgroup (<500 cases) and short follow-up subgroup (<10 years). The meta-regression analysis found no obvious to explain source of heterogeneity (Table 1b).

Colorectal cancer. Highest versus lowest intake. Twenty-one cohort studies^{30,31,38,43,47–63} were included in the analysis (2141185 samples) of the highest versus lowest intake of coffee and colorectal cancer. The study characteristics are presented (Table 1a). The summary RR was 0.96 (95% CI = 0.91–1.02, $P = 0.175$) with low heterogeneity ($I^2 = 23.6\%$, $P = 0.160$) (Fig. 4A). The summary RRs for colon and rectal cancer were 0.87 (95% CI = 0.78–0.96, $P = 0.007$) and 0.94 (95% CI = 0.85–1.04, $P = 0.236$) (Fig. 2B). The results suggest no publication

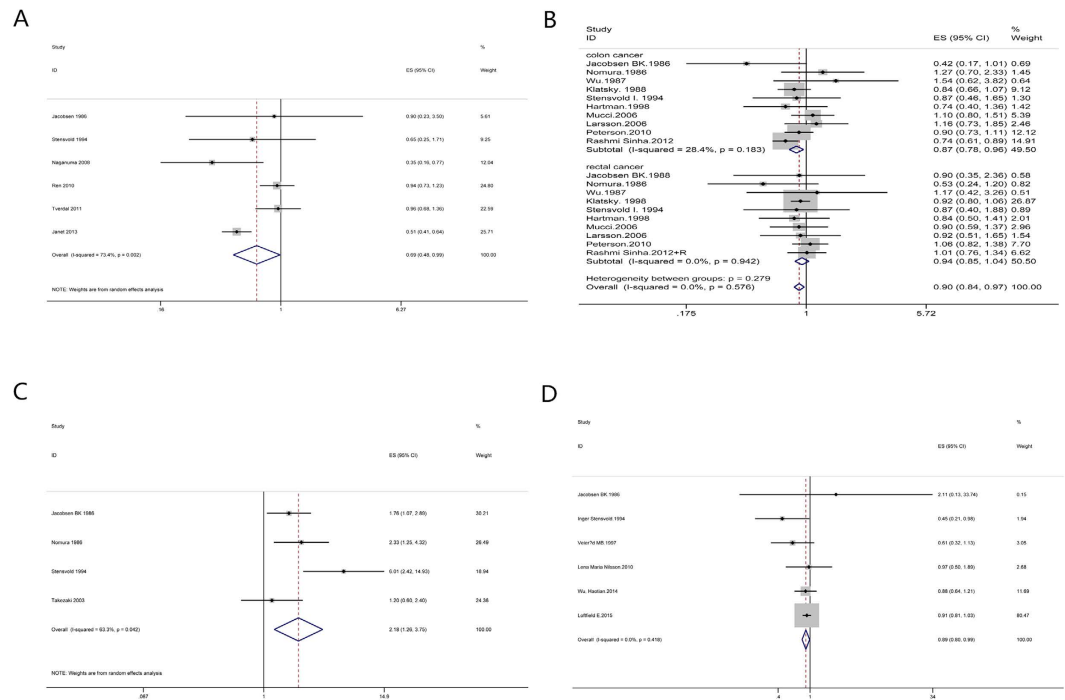


Figure 2. Meta-analyses between coffee intake and risk of oral, pharynx cancer, colorectal cancer, lung cancer and melanoma. Relative risks of oral, pharynx cancer (A), colorectal cancer (B), lung cancer (C) and melanoma (D) associated with coffee intake. Squares represent study-specific relative risk estimates (size of the square reflects the study-specific statistical weight, that is, the inverse of the variance); horizontal lines represent 95% CIs; diamonds represent summary relative risk estimates with corresponding 95% CIs.

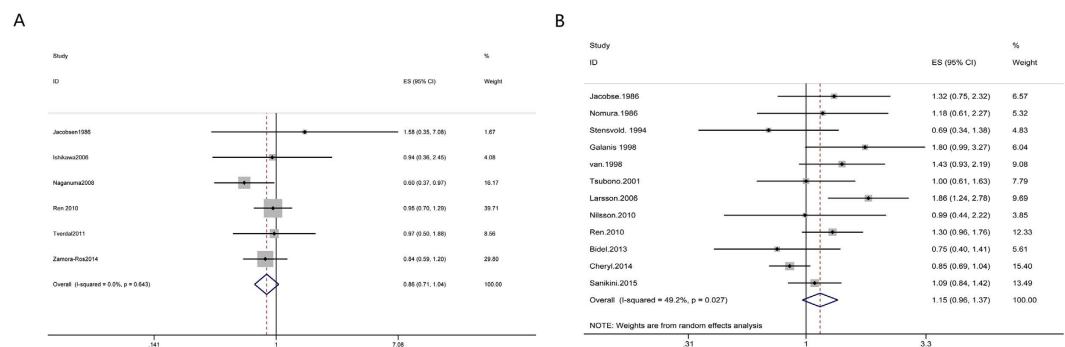


Figure 3. Meta-analyses between coffee intake and risk of esophageal cancer and stomach cancer. Relative risks of esophageal cancer (A) and stomach cancer (B) associated with coffee intake. Squares represent study-specific relative risk estimates (size of the square reflects the study-specific statistical weight, that is, the inverse of the variance); horizontal lines represent 95% CIs; diamonds represent summary relative risk estimates with corresponding 95% CIs.

bias, with $P = 0.70$ for Begg's test and $P = 0.82$ for Egger's test. The subgroup analysis indicated that no significant association was observed between coffee intake and the risk of colorectal cancer in each subgroup. No substantial source of heterogeneity was found by meta-regression analysis (Stable 1b).

Pancreatic cancer. Highest versus lowest intake. Fifteen cohort studies^{30,31,38,44,64-74} were included in the analysis (1219019 samples) of the highest versus lowest intake of coffee and pancreatic cancer. The study characteristics are presented (Stable 1a). The summary RR was 1.02 (95% CI = 0.87-1.18, $P = 0.832$) with low heterogeneity ($I^2 = 16.2\%$, $P = 0.27$) (Fig. 4B). The results suggest no publication bias, with $P = 0.43$ for Begg's test and $P = 0.75$ for Egger's test. There was no significant association between coffee intake and the risk of pancreatic cancer in each subgroup through subgroup analysis. Meta-regression analysis found no factors explaining the source of heterogeneity (Stable 1b).

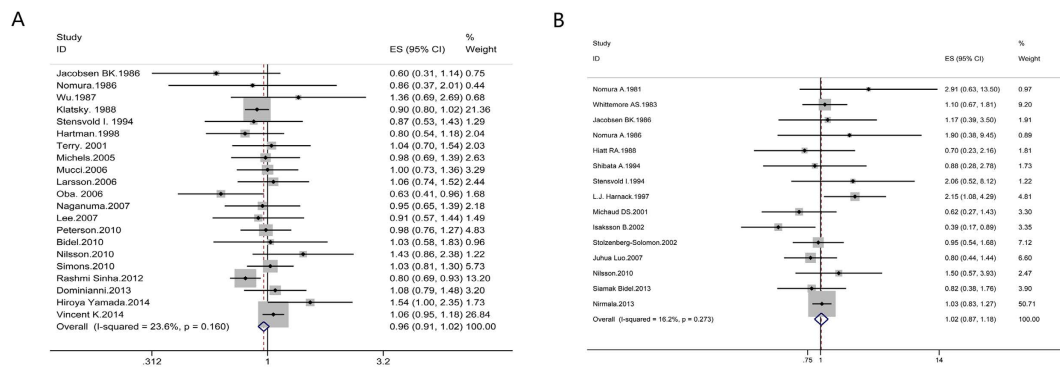


Figure 4. Meta-analyses between coffee intake and risk of colorectal cancer and pancreatic cancer. Relative risks of colorectal cancer (A) and pancreatic cancer (B) associated with coffee intake. Squares represent study-specific relative risk estimates (size of the square reflects the study-specific statistical weight, that is, the inverse of the variance); horizontal lines represent 95% CIs; diamonds represent summary relative risk estimates with corresponding 95% CIs.

Liver cancer. Highest versus lowest intake. Nine cohort studies^{23,75–82} were included in the analysis (968517 samples) of the highest versus lowest intake of coffee and liver cancer. The study characteristics are presented (Table 1a). The summary RR was 0.46 (95% CI = 0.37–0.57, $P = 0$) with no heterogeneity ($I^2 = 0\%$, $P = 0.44$) (Fig. 5A). The results suggest no publication bias, with $P = 0.18$ for Begg's test and $P = 0.23$ for Egger's test. The inverse association was observed between coffee consumption and liver cancer incidence in most subgroups through subgroup analysis. However, there was no significant relationship between coffee intake and the risk of liver cancer in women subgroup (Table 1b).

Dose-response analysis. We included seven studies^{23,75–80,82} for the dose-response analysis. There was no non-linear association between coffee intake and risk of liver cancer ($P = 0.41$ for non-linearity, Fig. 5A). A statistically significant inverse association was observed for liver cancer (RR = 0.73, 95% CI = 0.67–0.79) with an increased intake of 2 cups of coffee per day.

Tumors of the urinary system. Renal cancer. Highest versus lowest intake. Five cohort studies^{30,31,43,83,84} were included in the analysis (1036465 samples) of the highest group (samples/cases: 125065/144) versus lowest group (samples/cases: 232706/299) of coffee intake and renal cancer. The study characteristics are presented (Table 2a). The summary RR was 0.79 (95% CI = 0.54–1.15, $P = 0.226$) with medium heterogeneity ($I^2 = 49.8\%$, $P = 0.09$) (Fig. 6A). The results suggest no publication bias, with $P = 0.22$ for Begg's test and $P = 0.14$ for Egger's test. There was no significant association between coffee intake and renal cancer risk in each subgroup through subgroup analysis (Table 2b). We did not find factors to explain the source of heterogeneity through subgroup analysis.

Bladder cancer. Highest versus lowest intake. Ten cohort studies^{30,31,38,85–91} were included in the analysis (340544 samples) of the highest versus lowest intake of coffee and bladder cancer. The study characteristics are presented (Table 2a). The summary RR was 1.12 (95% CI = 0.94–1.34, $P = 0.192$) with medium heterogeneity ($I^2 = 39.6\%$, $P = 0.094$) (Fig. 6B). The results suggest publication bias, with $P = 0.016$ for Begg's test and $P = 0.01$ for Egger's test. The summary RR was 1.04 (95% CI = 0.88–1.23, $P = 0.669$) after Trim and fill analysis. The subgroup analysis indicated that coffee intake was associated with increased bladder cancer in USA (Table 2b). No factor could explain the source of heterogeneity through subgroup analysis and meta-regression analysis (Table 2b).

Prostate cancer. Highest versus lowest intake. Fourteen cohort studies^{30,31,38,43,92–101} were included in the analysis (864012 samples) of the highest versus lowest intake of coffee and prostate cancer. The study characteristics are presented (Table 2a). The summary RR was 0.89 (95% CI = 0.84–0.93, $P = 0.003$) with medium heterogeneity ($I^2 = 30.3\%$, $P = 0.14$) (Fig. 5B). The results suggest no publication bias, with $P = 0.83$ for Begg's test and $P = 0.84$ for Egger's test. Through subgroup analysis, we found the inverse association between coffee intake and prostate cancer incidence in most subgroups. However, there was no significant relationship between coffee intake and the risk of prostate cancer in Canada and Asia (Table 2b). The same associations were observed in follow-up (<10 years) subgroup and some adjustment confounders including no physical activity adjustment subgroup and no BMI adjustment subgroup (Table 2b). Meta-regression found no substantial factor to explain the source of heterogeneity.

Dose-response analysis. We included ten studies^{30,31,92,94,96–101} in the dose-response analysis. There was no non-linear association between coffee intake and risk of prostate cancer ($P = 0.15$ for non-linearity, Fig. 5B). A statistically significant inverse association was observed for prostate cancer (RR = 0.97, 95% CI = 0.96–0.98) with an increased intake of 2 cups of coffee per day.

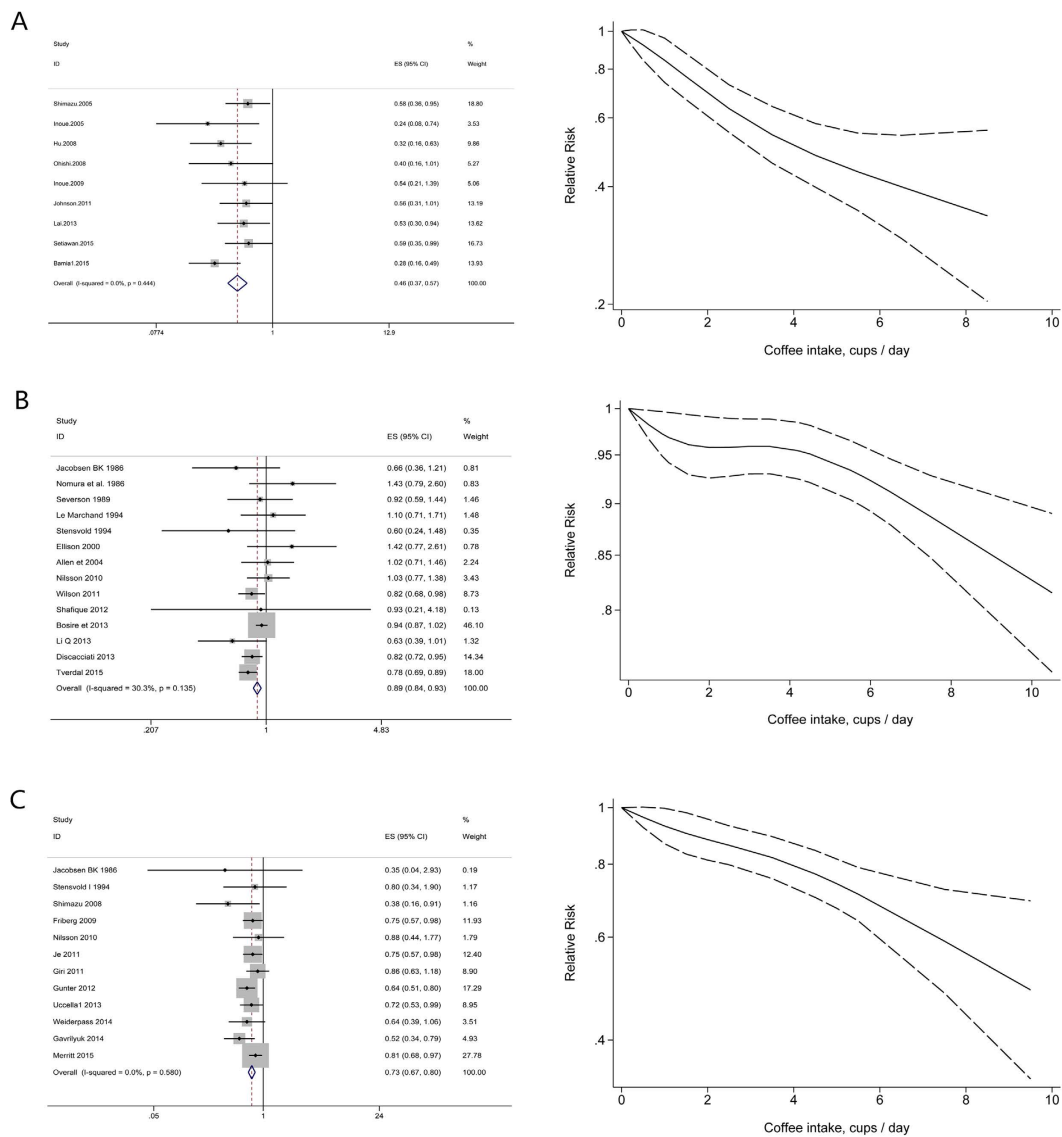


Figure 5. Dose-response analyses between coffee intake and risk of liver cancer, prostate cancer and endometrial cancer. Relative risks of liver cancer (A), prostate cancer (B) and endometrial cancer (C) associated with coffee intake. Squares represent study-specific relative risk estimates (size of the square reflects the study-specific statistical weight, that is, the inverse of the variance); horizontal lines represent 95% CIs; diamonds represent summary relative risk estimates with corresponding 95% CIs.

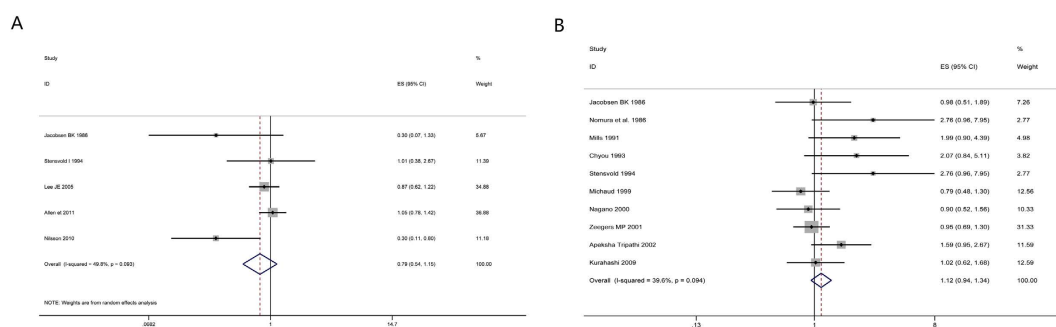


Figure 6. Meta-analyses between coffee intake and risk of renal cancer and bladder cancer. Relative risks of renal cancer (A) and bladder cancer (B) associated with coffee intake. Squares represent study-specific relative risk estimates (size of the square reflects the study-specific statistical weight, that is, the inverse of the variance); horizontal lines represent 95% CIs; diamonds represent summary relative risk estimates with corresponding 95% CIs.

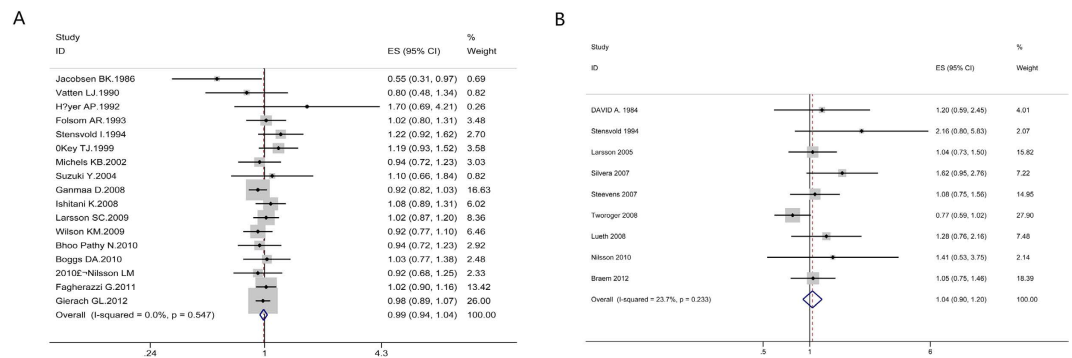


Figure 7. Meta-analyses between coffee intake and risk of breast cancer and ovarian cancer. Relative risks of breast cancer (A) and ovarian cancer (B) associated with coffee intake. Squares represent study-specific relative risk estimates (size of the square reflects the study-specific statistical weight, that is, the inverse of the variance); horizontal lines represent 95% CIs; diamonds represent summary relative risk estimates with corresponding 95% CIs.

Female genital system neoplasm. Breast cancer. Highest versus lowest intake. Seventeen cohort studies^{30,31,43,102–115} were included in the analysis (997482 samples) of the highest versus lowest intake of coffee and breast cancer. The study characteristics are presented (Stable 3a). The summary RR was 0.99 (95% CI = 0.94–1.04, $P = 0.619$) with no heterogeneity ($I^2 = 0\%$, $P = 0.55$) (Fig. 7A). The results suggest no publication bias, with $P = 0.84$ for Begg's test and $P = 0.75$ for Egger's test. No significant relationship was observed between coffee consumption and the risk of breast cancer in all subgroups through subgroup analysis (Stable 3b).

Ovarian cancer. Highest versus lowest intake. Nine cohort studies^{9,31,43,116–121} were included in the analysis (687017 samples) of the highest versus lowest intake of coffee and ovarian cancer. The study characteristics are presented (Stable 3a). The summary RR was 1.04 (95% CI = 0.90–1.20, $P = 0.582$) with low heterogeneity ($I^2 = 23.7\%$, $P = 0.23$) (Fig. 7B). The results suggest publication bias, with $P = 0.02$ for Begg's test and $P = 0.009$ for Egger's test. The summary RR was 0.96 (95% CI = 0.84–1.09) after Trim and fill analysis. The subgroup analysis indicated that there was no significant association between coffee intake and ovarian cancer risk in each subgroup. No factor could explain the source of heterogeneity through subgroup analysis (Stable 3b).

Endometrial cancer. Highest versus lowest intake. Twelve cohort studies^{30,31,43,122–130} were included in the analysis (1114002 samples) of the highest versus lowest intake of coffee and endometrial cancer. The study characteristics are presented (Stable 3a). The summary RR was 0.73 (95% CI = 0.67–0.80, $P = 0$) with no heterogeneity ($I^2 = 0\%$, $P = 0.58$) (Fig. 5C). The results suggest no publication bias, with $P = 0.19$ for Begg's test and $P = 0.16$ for Egger's test. Subgroup analysis indicated that inverse significant association was observed between coffee consumption and endometrial cancer incidence in most subgroups. However, there was no significant relationship between coffee intake and the risk of endometrial cancer in no BMI adjustment subgroup (Stable 3b).

Dose-response analysis. We included eleven studies^{30,31,43,122–129} for the dose-response analysis. There was no non-linear association between coffee intake and risk of endometrial cancer ($P = 0.69$ for non-linearity, Fig. 5C). A statistically significant inverse association was observed for endometrial cancer (RR = 0.88, 95% CI = 0.85–0.92) with an increased intake of 2 cups of coffee per day.

Other cancers. Lung cancer. Highest versus lowest intake. Four cohort studies^{30,31,38,131} were included in the analysis (103137 samples) of the highest versus lowest intake of coffee and lung cancer. The study characteristics are presented (Stable 4a). The summary RR was 2.18 (95% CI = 1.26–3.75, $P = 0.005$) with high heterogeneity ($I^2 = 63.3\%$, $P = 0.04$) (Fig. 2C). The results suggest no publication bias, with $P = 0.73$ for Begg's test and $P = 0.39$ for Egger's test.

Melanoma. Highest versus lowest intake. Six cohort studies^{30,31,43,132–134} were included in the analysis (773536 samples) of the highest versus lowest intake of coffee and melanoma. The study characteristics are presented (Stable 4a). The summary RR was 0.89 (95% CI = 0.80–0.99, $P = 0.031$) with no heterogeneity ($I^2 = 0\%$, $P = 0.42$) (Fig. 2D). The results suggest no publication bias, with $P = 0.71$ for Begg's test and $P = 0.40$ for Egger's test. There was no significant association between coffee intake and melanoma risk through subgroup analysis. The subgroup analysis indicated no factor to explain the source of heterogeneity (Stable 4b).

Lymphoma. Highest versus lowest intake. Three cohort studies^{30,31,43} were included in the analysis (89897 samples) of the highest group (samples/cases: 32783/63) versus lowest group (samples/cases: 17229/22) coffee intake and lymphoma. The study characteristics are presented (Stable 4a). The summary RR was 1.23 (95% CI = 0.75–2.03, $P = 0.415$) with no heterogeneity ($I^2 = 0\%$, $P = 0.769$) (Fig. 8). The results suggest no publication bias, with $P = 1$ for Begg's test and $P = 0.18$ for Egger's test.

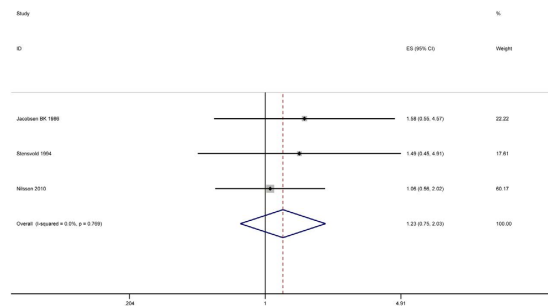


Figure 8. Meta-analyses between coffee intake and risk of lymphoma. Relative risks of lymphoma associated with coffee intake. Squares represent study-specific relative risk estimates (size of the square reflects the study-specific statistical weight, that is, the inverse of the variance); horizontal lines represent 95% CIs; diamonds represent summary relative risk estimates with corresponding 95% CIs.

Subgroup, sensitivity, and meta-regression analyses. We conducted subgroup analyses and meta-regression analyses based on sex, duration of follow-up, geographical location and adjusted confounders. Coffee intake was associated with a decreased risk of liver cancer in most subgroups, with no substantial heterogeneity between subgroups. However, the protective effect was absent in the female population (Stable 1b). Inverse association was observed for oral, pharynx cancer in Asia rather than Europe and USA (Stable 1b). Inverse associations were also observed for prostate cancer and endometrial cancer, with no substantial heterogeneity between subgroups (Stables 2b and 3b). Coffee intake was not significantly associated with colorectal cancer incidence in most subgroup analyses. However, an inverse relation was observed for colon cancer (Stable 1b). An increased risk was observed for lung cancer in most subgroups (Stable 4b). No association was observed for esophageal cancer, stomach cancer, pancreatic cancer, renal cancer, bladder cancer, breast cancer, ovarian cancer or melanoma in subgroup analyses (Stables 1b, 2b, 3b and 4b).

We conducted a sensitivity analysis by excluding studies that were not dose-response analyses to evaluate whether the results were stable. The summary relative risk for the highest versus lowest intake of coffee and liver cancer was 0.53 (95% CI = 0.43–0.65, $I^2 = 0\%$, $P = 0.693$). The results were 0.87 (95% CI = 0.82–0.92, $I^2 = 31.8\%$, $P = 0.154$), 0.70 (95% CI = 0.63–0.78, $I^2 = 0\%$, $P = 0.663$), 0.85 (95% CI = 0.71–1.03, $I^2 = 05\%$, $P = 0.396$), 0.62 (95% CI = 0.41–0.94, $I^2 = 64.3\%$, $P = 0.024$) and 0.89 (95% CI = 0.72–1.11, $I^2 = 0\%$, $P = 0.882$) for prostate cancer, endometrial cancer, colon cancer, oral, pharynx cancer and melanoma. The results were similar to those of the primary analysis except for colon cancer and melanoma.

Discussion

Our meta-analysis supports an inverse association between coffee intake and oral, pharynx cancer, liver cancer, colon cancer, prostate cancer, endometrial cancer and melanoma and increased association for lung cancer. Besides, the linear inverse associations were observed for liver cancer, prostate cancer and endometrial cancer. However, no significant association was found with esophageal cancer, stomach cancer, rectal cancer, pancreatic cancer, renal cancer, bladder cancer, prostate cancer, breast cancer, ovarian cancer, lung cancer, melanoma, and lymphoma.

To date, our study is the most comprehensive to conduct meta-analyses on coffee intake and cancer. We can clearly determine the association between coffee and most types of cancers from our research. Our findings seem to be more stable because our analyses were based on prospective studies. We conducted subgroup analyses and sensitivity analyses to explore the source of heterogeneity and verify the stability of the results. We also quantified the association between coffee intake and liver cancer, prostate cancer and endometrial cancer by conducting linear and non-linear dose-response analyses. Begg's and Egger's methods were used to evaluate publication bias. When the results suggested publication bias, we conducted a trim and fill analysis to determine whether the results were different.

Some limitations of our study should be taken into consideration. First, not all of the included studies conducted analyses by potential confounding, which could affect the results. However, we conducted subgroup analyses by confounding factors and found no substantial factors influencing the results. Second, some eligible studies^{30,38,64} did not provide relative risks and confidence intervals; thus, we extracted raw data for further analysis, which may influence the accuracy of the overall results regardless of confounding factors. Third, some studies measured the level of coffee intake in milliliters and others reported as cups. Due to the ambiguity in the volume contained in a cup of coffee, it was difficult to precisely compare the amount of coffee intake, which could influence the results of dose-response analyses. Moreover, we excluded a few studies for dose-response analyses. However, the results are similar to those of the analyses of highest versus lowest intake when we conducted sensitivity analyses by excluding these same data. Fourth, some cancers such as oral, pharynx cancer, esophageal cancer, renal cancer, lung cancer, melanoma and lymphoma included relatively limited number of studies for meta-analysis, may cause problems for evaluation of heterogeneities and publication bias and finally reduce the confidence of the results. Finally, our study did not include all types of cancers such as skin cancer, laryngeal carcinoma and glioma.

In addition, we found high heterogeneities when we conducted meta-analyses on coffee intake and oral, pharynx cancer and lung cancer. Although an inverse association was found between coffee and oral and

pharynx cancer, we did not conduct a further dose-response analysis because of substantial heterogeneity. The dose-response analyses were also not conducted for colon cancer, melanoma and lung cancer because of the null results of sensitivity analyses. Medium heterogeneities were found in the analyses of coffee intake and renal cancer, bladder cancer and stomach cancer. Heterogeneity refers to the inconsistency within included studies. The biology diversity and methodological diversity could bring about heterogeneity. To further explore the source of heterogeneity, we conducted subgroups analyses and meta-regression analyses based on many factors, such as cancer subtypes, geographical location, sex, duration of follow-up and potential confounding factors¹³⁵. We found publication bias in meta-analyses on coffee intake and liver cancer, bladder cancer and ovarian cancer. We conducted trim and fill analyses and found that all of the results were stable. However, the evaluation for publication bias is not very reliable when the number of included studies was small. Therefore, we could not draw conclusion that there was no obvious publication bias for esophageal cancer, renal cancer, melanoma and lymphoma.

Coffee intake could reduce the incidence of colon cancer, liver cancer, prostate cancer, endometrial cancer, oral, pharyngeal cancer and melanoma. There are several mechanisms attempting to explain this phenomenon. Coffee contains many bioactive components, including caffeine, cafestol, kahweol, and chlorogenic acid. Some studies indicate that caffeine can prevent oxidative DNA damage, modify the apoptotic response and reverse the cell cycle checkpoint function^{136,137}. Moreover, some researchers^{138,139} have found that cafestol and kahweol are anticarcinogenic. Feng *et al.* hypothesized that chlorogenic acids can clear away reactive oxygen species and confer an anti-tumor effect¹⁴⁰. Dong *et al.* demonstrated that caffeine suppresses the progression of HCC through the Akt signaling pathway¹⁴¹. Furthermore, caffeine and other compounds in coffee increased the clearance of estradiol and inhibited estradiol-mediated carcinogenesis in endometrial cells¹⁴². Coffee consumption decreased the exposure of epithelial cells to carcinogens in the colon by increasing colonic motility¹⁴³. In addition, coffee has been reported to reduce the synthesis and secretion of bile acids, potential promoters of colon carcinogenesis¹⁴⁴. The decreased risk of these types of cancers may attribute to some potential mechanism, however, there are many controversies about the mechanisms. Although a positive association was observed between coffee intake and lung cancer, it has been reported that high intakes of coffee are frequently associated with cigarette smoking¹⁴⁵, which could contribute to the increased risk of lung cancer. However, we take a conservative responsibility for the results because of the limited study numbers and the absence of analysis between smokers and nonsmokers.

Our study demonstrates that coffee intake can reduce the risk of oral, pharynx cancer, colon cancer, liver cancer, prostate cancer, endometrial cancer and melanoma by 31%, 13%, 54%, 11%, 27% and 11% respectively for the highest versus lowest coffee intake. Furthermore, coffee intake could reduce the risk of liver cancer, prostate cancer and endometrial cancer by 27%, 3% and 12% with an increment of 2 cups of coffee intake. Inversely, coffee intake seems to increase the risk of lung cancer by 118%. However, considering the shortcomings of our research, our conclusions should be carefully considered. Further studies are needed to clarify the potential underlying mechanisms by which coffee intake may reduce cancer risk. Perhaps add that further studies could assess the association among never smokers, particularly for smoking-related lung cancer.

References

- Torre, L. A. *et al.* Global cancer statistics, 2012. *CA: a cancer journal for clinicians* **65**, 87–108, doi: 10.3322/caac.21262 (2015).
- Jemal, A. *et al.* Global cancer statistics. *CA: a cancer journal for clinicians* **61**, 69–90, doi: 10.3322/caac.20107 (2011).
- Bae, J. M., Lee, E. J. & Guyatt, G. Citrus fruit intake and pancreatic cancer risk: a quantitative systematic review. *Pancreas* **38**, 168–174, doi: 10.1097/MPA.0b013e318188c497 (2009).
- Aune, D. *et al.* Dietary fibre, whole grains, and risk of colorectal cancer: systematic review and dose-response meta-analysis of prospective studies. *BMJ (Clinical research ed.)* **343**, d6617, doi: 10.1136/bmj.d6617 (2011).
- Sang, L. X., Chang, B., Li, X. H. & Jiang, M. Consumption of coffee associated with reduced risk of liver cancer: a meta-analysis. *BMC gastroenterology* **13**, 34, doi: 10.1186/1471-230x-13-34 (2013).
- Lee, J. E. *et al.* Intakes of coffee, tea, milk, soda and juice and renal cell cancer in a pooled analysis of 13 prospective studies. *International journal of cancer. Journal international du cancer* **121**, 2246–2253, doi: 10.1002/ijc.22909 (2007).
- Tang, N., Wu, Y., Ma, J., Wang, B. & Yu, R. Coffee consumption and risk of lung cancer: a meta-analysis. *Lung cancer (Amsterdam, Netherlands)* **67**, 17–22, doi: 10.1016/j.lungcan.2009.03.012 (2010).
- Turati, F., Galeone, C., La Vecchia, C., Garavello, W. & Tavani, A. Coffee and cancers of the upper digestive and respiratory tracts: meta-analyses of observational studies. *Annals of oncology: official journal of the European Society for Medical Oncology/ESMO* **22**, 536–544, doi: 10.1093/annonc/mdq603 (2011).
- Braem, M. G. *et al.* Coffee and tea consumption and the risk of ovarian cancer: a prospective cohort study and updated meta-analysis. *The American journal of clinical nutrition* **95**, 1172–1181, doi: 10.3945/ajcn.111.026393 (2012).
- Je, Y. & Giovannucci, E. Coffee consumption and risk of endometrial cancer: findings from a large up-to-date meta-analysis. *International journal of cancer. Journal international du cancer* **131**, 1700–1710, doi: 10.1002/ijc.27408 (2012).
- Turati, F. *et al.* A meta-analysis of coffee consumption and pancreatic cancer. *Annals of oncology: official journal of the European Society for Medical Oncology/ESMO* **23**, 311–318, doi: 10.1093/annonc/mdr331 (2012).
- Jiang, W., Wu, Y. & Jiang, X. Coffee and caffeine intake and breast cancer risk: an updated dose-response meta-analysis of 37 published studies. *Gynecologic oncology* **129**, 620–629, doi: 10.1016/j.ygyno.2013.03.014 (2013).
- Zheng, J. S. *et al.* Effects of green tea, black tea, and coffee consumption on the risk of esophageal cancer: a systematic review and meta-analysis of observational studies. *Nutrition and cancer* **65**, 1–16, doi: 10.1080/01635581.2013.741762 (2013).
- Green, C. J. *et al.* Tea, coffee, and milk consumption and colorectal cancer risk. *Journal of epidemiology/Japan Epidemiological Association* **24**, 146–153 (2014).
- Huang, T. B. *et al.* Coffee consumption and urologic cancer risk: a meta-analysis of cohort studies. *International urology and nephrology* **46**, 1481–1493, doi: 10.1007/s11255-014-0699-9 (2014).
- Xie, F., Wang, D., Huang, Z. & Guo, Y. Coffee consumption and risk of gastric cancer: a large updated meta-analysis of prospective studies. *Nutrients* **6**, 3734–3746, doi: 10.3390/nu6093734 (2014).
- Liu, H. *et al.* Coffee consumption and prostate cancer risk: a meta-analysis of cohort studies. *Nutrition and cancer* **67**, 392–400, doi: 10.1080/01635581.2015.1004727 (2015).
- Xie, Y. *et al.* Coffee consumption and the risk of lung cancer: an updated meta-analysis of epidemiological studies. *European journal of clinical nutrition*, doi: 10.1038/ejcn.2015.96 (2015).
- Zhong, S. *et al.* Coffee consumption and risk of prostate cancer: an up-to-date meta-analysis. *European journal of clinical nutrition* **68**, 330–337, doi: 10.1038/ejcn.2013.256 (2014).

20. Bravi, F., Bosetti, C., Tavani, A., Gallus, S. & La Vecchia, C. Coffee reduces risk for hepatocellular carcinoma: an updated meta-analysis. *Clinical gastroenterology and hepatology: the official clinical practice journal of the American Gastroenterological Association* **11**, 1413–1421 e1411, doi: 10.1016/j.cgh.2013.04.039 (2013).
21. Greenland, S. & Longnecker, M. P. Methods for trend estimation from summarized dose-response data, with applications to meta-analysis. *American journal of epidemiology* **135**, 1301–1309 (1992).
22. Moskal, A., Norat, T., Ferrari, P. & Riboli, E. Alcohol intake and colorectal cancer risk: a dose-response meta-analysis of published cohort studies. *International journal of cancer. Journal international du cancer* **120**, 664–671, doi: 10.1002/ijc.22299 (2007).
23. Shimazu, T. *et al.* Coffee consumption and the risk of primary liver cancer: pooled analysis of two prospective studies in Japan. *International journal of cancer. Journal international du cancer* **116**, 150–154, doi: 10.1002/ijc.20989 (2005).
24. Royston, P. A strategy for modelling the effect of a continuous covariate in medicine and epidemiology. *Statistics in medicine* **19**, 1831–1847 (2000).
25. Rong, Y. *et al.* Egg consumption and risk of coronary heart disease and stroke: dose-response meta-analysis of prospective cohort studies. *BMJ (Clinical research ed.)* **346**, e8539, doi: 10.1136/bmj.e8539 (2013).
26. Higgins, J. P. & Thompson, S. G. Quantifying heterogeneity in a meta-analysis. *Statistics in medicine* **21**, 1539–1558, doi: 10.1002/sim.1186 (2002).
27. Begg, C. B. & Mazumdar, M. Operating characteristics of a rank correlation test for publication bias. *Biometrics* **50**, 1088–1101 (1994).
28. Egger, M., Davey Smith, G., Schneider, M. & Minder, C. Bias in meta-analysis detected by a simple, graphical test. *BMJ (Clinical research ed.)* **315**, 629–634 (1997).
29. Sena, E. S., van der Worp, H. B., Bath, P. M., Howells, D. W. & Macleod, M. R. Publication bias in reports of animal stroke studies leads to major overstatement of efficacy. *PLoS biology* **8**, e1000344, doi: 10.1371/journal.pbio.1000344 (2010).
30. Jacobsen, B. K., Bjelke, E., Kvale, G. & Heuch, I. Coffee drinking, mortality, and cancer incidence: results from a Norwegian prospective study. *Journal of the National Cancer Institute* **76**, 823–831 (1986).
31. Stensvold, I. & Jacobsen, B. K. Coffee and cancer: a prospective study of 43,000 Norwegian men and women. *Cancer causes & control: CCC* **5**, 401–408 (1994).
32. Naganuma, T. *et al.* Coffee consumption and the risk of oral, pharyngeal, and esophageal cancers in Japan: the Miyagi Cohort Study. *American journal of epidemiology* **168**, 1425–1432, doi: 10.1093/aje/kwn282 (2008).
33. Ren, J. S. *et al.* Tea, coffee, carbonated soft drinks and upper gastrointestinal tract cancer risk in a large United States prospective cohort study. *European journal of cancer (Oxford, England: 1990)* **46**, 1873–1881, doi: 10.1016/j.ejca.2010.03.025 (2010).
34. Tverdal, A., Hjellevik, V. & Selmer, R. Coffee intake and oral-oesophageal cancer: follow-up of 389,624 Norwegian men and women 40–45 years. *British journal of cancer* **105**, 157–161, doi: 10.1038/bjc.2011.192 (2011).
35. Hildebrand, J. S. *et al.* Coffee, tea, and fatal oral/pharyngeal cancer in a large prospective US cohort. *American journal of epidemiology* **177**, 50–58, doi: 10.1093/aje/kws222 (2013).
36. Ishikawa, A. *et al.* Smoking, alcohol drinking, green tea consumption and the risk of esophageal cancer in Japanese men. *Journal of epidemiology/Japan Epidemiological Association* **16**, 185–192 (2006).
37. Zamora-Ros, R. *et al.* Tea and coffee consumption and risk of esophageal cancer: the European prospective investigation into cancer and nutrition study. *International journal of cancer. Journal international du cancer* **135**, 1470–1479, doi: 10.1002/ijc.28789 (2014).
38. Nomura, A., Heilbrun, L. K. & Stemmermann, G. N. Prospective study of coffee consumption and the risk of cancer. *Journal of the National Cancer Institute* **76**, 587–590 (1986).
39. Galanis, D. J., Kolonel, L. N., Lee, J. & Nomura, A. Intakes of selected foods and beverages and the incidence of gastric cancer among the Japanese residents of Hawaii: a prospective study. *International journal of epidemiology* **27**, 173–180 (1998).
40. van Loon, A. J., Goldbohm, R. A. & van den Brandt, P. A. Socioeconomic status and stomach cancer incidence in men: results from The Netherlands Cohort Study. *Journal of epidemiology and community health* **52**, 166–171 (1998).
41. Tsubono, Y. *et al.* Green tea and the risk of gastric cancer in Japan. *The New England journal of medicine* **344**, 632–636, doi: 10.1056/nejm200103013440903 (2001).
42. Larsson, S. C., Giovannucci, E. & Wolk, A. Coffee consumption and stomach cancer risk in a cohort of Swedish women. *International journal of cancer. Journal international du cancer* **119**, 2186–2189, doi: 10.1002/ijc.22105 (2006).
43. Nilsson, L. M., Johansson, I., Lenner, P., Lindahl, B. & Van Guelpen, B. Consumption of filtered and boiled coffee and the risk of incident cancer: a prospective cohort study. *Cancer causes & control: CCC* **21**, 1533–1544, doi: 10.1007/s10552-010-9582-x (2010).
44. Bidel, S. *et al.* Coffee consumption and risk of gastric and pancreatic cancer—a prospective cohort study. *International journal of cancer. Journal international du cancer* **132**, 1651–1659, doi: 10.1002/ijc.27773 (2013).
45. Ainslie-Waldman, C. E. *et al.* Coffee intake and gastric cancer risk: the Singapore Chinese health study. *Cancer epidemiology, biomarkers & prevention: a publication of the American Association for Cancer Research, cosponsored by the American Society of Preventive Oncology* **23**, 638–647, doi: 10.1158/1055-9965.epi-13-0886 (2014).
46. Sanikini, H. *et al.* Total, caffeinated and decaffeinated coffee and tea intake and gastric cancer risk: results from the EPIC cohort study. *International journal of cancer. Journal international du cancer* **136**, E720–730, doi: 10.1002/ijc.29223 (2015).
47. Wu, A. H., Paganini-Hill, A., Ross, R. K. & Henderson, B. E. Alcohol, physical activity and other risk factors for colorectal cancer: a prospective study. *British journal of cancer* **55**, 687–694 (1987).
48. Klatsky, A. L., Armstrong, M. A., Friedman, G. D. & Hiatt, R. A. The relations of alcoholic beverage use to colon and rectal cancer. *American journal of epidemiology* **128**, 1007–1015 (1988).
49. Hartman, T. J. *et al.* Tea and coffee consumption and risk of colon and rectal cancer in middle-aged Finnish men. *Nutrition and cancer* **31**, 41–48, doi: 10.1080/01635589809514676 (1998).
50. Terry, P., Bergkvist, L., Holmberg, L. & Wolk, A. Coffee consumption and risk of colorectal cancer in a population based prospective cohort of Swedish women. *Gut* **49**, 87–90 (2001).
51. Michels, K. B., Willett, W. C., Fuchs, C. S. & Giovannucci, E. Coffee, tea, and caffeine consumption and incidence of colon and rectal cancer. *Journal of the National Cancer Institute* **97**, 282–292, doi: 10.1093/jnci/dji039 (2005).
52. Larsson, S. C., Bergkvist, L., Giovannucci, E. & Wolk, A. Coffee consumption and incidence of colorectal cancer in two prospective cohort studies of Swedish women and men. *American journal of epidemiology* **163**, 638–644, doi: 10.1093/aje/kwj067 (2006).
53. Mucci, L. A., Adami, H. O. & Wolk, A. Prospective study of dietary acrylamide and risk of colorectal cancer among women. *International journal of cancer. Journal international du cancer* **118**, 169–173, doi: 10.1002/ijc.21309 (2006).
54. Oba, S. *et al.* The relationship between the consumption of meat, fat, and coffee and the risk of colon cancer: a prospective study in Japan. *Cancer letters* **244**, 260–267, doi: 10.1016/j.canlet.2005.12.037 (2006).
55. Lee, K. J. *et al.* Coffee consumption and risk of colorectal cancer in a population-based prospective cohort of Japanese men and women. *International journal of cancer. Journal international du cancer* **121**, 1312–1318, doi: 10.1002/ijc.22778 (2007).
56. Naganuma, T. *et al.* Coffee consumption and the risk of colorectal cancer: a prospective cohort study in Japan. *International journal of cancer. Journal international du cancer* **120**, 1542–1547, doi: 10.1002/ijc.22505 (2007).
57. Bidel, S. *et al.* Coffee consumption and risk of colorectal cancer. *European journal of clinical nutrition* **64**, 917–923, doi: 10.1038/ejcn.2010.103 (2010).

58. Peterson, S. *et al.* Coffee intake and risk of colorectal cancer among Chinese in Singapore: the Singapore Chinese Health Study. *Nutrition and cancer* **62**, 21–29, doi: 10.1080/01635580903191528 (2010).
59. Simons, C. C. *et al.* Fluid intake and colorectal cancer risk in the Netherlands Cohort Study. *Nutrition and cancer* **62**, 307–321, doi: 10.1080/01635580903407098 (2010).
60. Sinha, R. *et al.* Caffeinated and decaffeinated coffee and tea intakes and risk of colorectal cancer in a large prospective study. *The American journal of clinical nutrition* **96**, 374–381, doi: 10.3945/ajcn.111.031328 (2012).
61. Dominianni, C., Huang, W. Y., Berndt, S., Hayes, R. B. & Ahn, J. Prospective study of the relationship between coffee and tea with colorectal cancer risk: the PLCO Cancer Screening Trial. *British journal of cancer* **109**, 1352–1359, doi: 10.1038/bjc.2013.434 (2013).
62. Dik, V. K. *et al.* Coffee and tea consumption, genotype-based CYP1A2 and NAT2 activity and colorectal cancer risk—results from the EPIC cohort study. *International journal of cancer. Journal international du cancer* **135**, 401–412, doi: 10.1002/ijc.28655 (2014).
63. Yamada, H. *et al.* Coffee consumption and risk of colorectal cancer: the Japan Collaborative Cohort Study. *Journal of epidemiology/Japan Epidemiological Association* **24**, 370–378 (2014).
64. Nomura, A., Stemmermann, G. N. & Heilbrun, L. K. Coffee and pancreatic cancer. *Lancet (London, England)* **2**, 415 (1981).
65. Whittemore, A. S., Paffenbarger, R. S. Jr., Anderson, K. & Halpern, J. Early precursors of pancreatic cancer in college men. *Journal of chronic diseases* **36**, 251–256 (1983).
66. Hiatt, R. A., Klatsky, A. L. & Armstrong, M. A. Pancreatic cancer, blood glucose and beverage consumption. *International journal of cancer. Journal international du cancer* **41**, 794–797 (1988).
67. Shibata, A., Mack, T. M., Paganini-Hill, A., Ross, R. K. & Henderson, B. E. A prospective study of pancreatic cancer in the elderly. *International journal of cancer. Journal international du cancer* **58**, 46–49 (1994).
68. Harnack, L. J. *et al.* Smoking, alcohol, coffee, and tea intake and incidence of cancer of the exocrine pancreas: the Iowa Women's Health Study. *Cancer epidemiology, biomarkers & prevention: a publication of the American Association for Cancer Research, cosponsored by the American Society of Preventive Oncology* **6**, 1081–1086 (1997).
69. Michaud, D. S., Giovannucci, E., Willett, W. C., Colditz, G. A. & Fuchs, C. S. Coffee and alcohol consumption and the risk of pancreatic cancer in two prospective United States cohorts. *Cancer epidemiology, biomarkers & prevention: a publication of the American Association for Cancer Research, cosponsored by the American Society of Preventive Oncology* **10**, 429–437 (2001).
70. Isaksson, B. *et al.* Lifestyle factors and pancreatic cancer risk: a cohort study from the Swedish Twin Registry. *International journal of cancer. Journal international du cancer* **98**, 480–482 (2002).
71. Stolzenberg-Solomon, R. Z., Pietinen, P., Taylor, P. R., Virtamo, J. & Albanes, D. Prospective study of diet and pancreatic cancer in male smokers. *American journal of epidemiology* **155**, 783–792 (2002).
72. Khan, M. M. *et al.* Dietary habits and cancer mortality among middle aged and older Japanese living in hokkaido, Japan by cancer site and sex. *Asian Pacific journal of cancer prevention: APJCP* **5**, 58–65 (2004).
73. Luo, J. *et al.* Green tea and coffee intake and risk of pancreatic cancer in a large-scale, population-based cohort study in Japan (JPHC study). *European journal of cancer prevention: the official journal of the European Cancer Prevention Organisation (ECP)* **16**, 542–548, doi: 10.1097/CEJ.0b013e32809b4d30 (2007).
74. Bhoo-Pathy, N. *et al.* Intake of coffee, decaffeinated coffee, or tea does not affect risk for pancreatic cancer: results from the European Prospective Investigation into Nutrition and Cancer Study. *Clinical gastroenterology and hepatology: the official clinical practice journal of the American Gastroenterological Association* **11**, 1486–1492, doi: 10.1016/j.cgh.2013.05.029 (2013).
75. Inoue, M., Yoshimi, I., Sobue, T. & Tsugane, S. Influence of coffee drinking on subsequent risk of hepatocellular carcinoma: a prospective study in Japan. *Journal of the National Cancer Institute* **97**, 293–300, doi: 10.1093/jnci/dji040 (2005).
76. Hu, G. *et al.* Joint effects of coffee consumption and serum gamma-glutamyltransferase on the risk of liver cancer. *Hepatology (Baltimore, Md.)* **48**, 129–136, doi: 10.1002/hep.22320 (2008).
77. Ohishi, W. *et al.* Risk factors for hepatocellular carcinoma in a Japanese population: a nested case-control study. *Cancer epidemiology, biomarkers & prevention: a publication of the American Association for Cancer Research, cosponsored by the American Society of Preventive Oncology* **17**, 846–854, doi: 10.1158/1055-9965.epi-07-2806 (2008).
78. Inoue, M. *et al.* Effect of coffee and green tea consumption on the risk of liver cancer: cohort analysis by hepatitis virus infection status. *Cancer epidemiology, biomarkers & prevention: a publication of the American Association for Cancer Research, cosponsored by the American Society of Preventive Oncology* **18**, 1746–1753, doi: 10.1158/1055-9965.epi-08-0923 (2009).
79. Johnson, S. *et al.* Coffee consumption and reduced risk of hepatocellular carcinoma: findings from the Singapore Chinese Health Study. *Cancer causes & control: CCC* **22**, 503–510, doi: 10.1007/s10552-010-9725-0 (2011).
80. Lai, G. Y. *et al.* The association of coffee intake with liver cancer incidence and chronic liver disease mortality in male smokers. *British journal of cancer* **109**, 1344–1351, doi: 10.1038/bjc.2013.405 (2013).
81. Bamia, C. *et al.* Coffee, tea and decaffeinated coffee in relation to hepatocellular carcinoma in a European population: multicentre, prospective cohort study. *International journal of cancer. Journal international du cancer* **136**, 1899–1908, doi: 10.1002/ijc.29214 (2015).
82. Setiawan, V. W. *et al.* Association of coffee intake with reduced incidence of liver cancer and death from chronic liver disease in the US multiethnic cohort. *Gastroenterology* **148**, 118–125; quiz e115, doi: 10.1053/j.gastro.2014.10.005 (2015).
83. Washio, M. *et al.* Risk factors for kidney cancer in a Japanese population: findings from the JACC Study. *Journal of epidemiology/Japan Epidemiological Association* **15** Suppl 2, S203–211 (2005).
84. Allen, N. E., Balkwill, A., Beral, V., Green, J. & Reeves, G. Fluid intake and incidence of renal cell carcinoma in UK women. *British journal of cancer* **104**, 1487–1492, doi: 10.1038/bjc.2011.90 (2011).
85. Mills, P. K., Beeson, W. L., Phillips, R. L. & Fraser, G. E. Bladder cancer in a low risk population: results from the Adventist Health Study. *American journal of epidemiology* **133**, 230–239 (1991).
86. Chyou, P. H., Nomura, A. M. & Stemmermann, G. N. A prospective study of diet, smoking, and lower urinary tract cancer. *Annals of epidemiology* **3**, 211–216 (1993).
87. Michaud, D. S. *et al.* Fluid intake and the risk of bladder cancer in men. *The New England journal of medicine* **340**, 1390–1397, doi: 10.1056/nejm199905063401803 (1999).
88. Nagano, J. *et al.* Bladder-cancer incidence in relation to vegetable and fruit consumption: a prospective study of atomic-bomb survivors. *International journal of cancer. Journal international du cancer* **86**, 132–138 (2000).
89. Zeegers, M. P., Dorant, E., Goldbohm, R. A. & van den Brandt, P. A. Are coffee, tea, and total fluid consumption associated with bladder cancer risk? Results from the Netherlands Cohort Study. *Cancer causes & control: CCC* **12**, 231–238 (2001).
90. Tripathi, A., Folsom, A. R. & Anderson, K. E. Risk factors for urinary bladder carcinoma in postmenopausal women. The Iowa Women's Health Study. *Cancer* **95**, 2316–2323, doi: 10.1002/cncr.10975 (2002).
91. Kurahashi, N., Inoue, M., Iwasaki, M., Sasazuki, S. & Tsugane, S. Coffee, green tea, and caffeine consumption and subsequent risk of bladder cancer in relation to smoking status: a prospective study in Japan. *Cancer science* **100**, 294–291, doi: 10.1111/j.1349-7006.2008.01027.x (2009).
92. Severson, R. K., Nomura, A. M., Grove, J. S. & Stemmermann, G. N. A prospective study of demographics, diet, and prostate cancer among men of Japanese ancestry in Hawaii. *Cancer research* **49**, 1857–1860 (1989).
93. Le Marchand, L., Kolonel, L. N., Wilkens, L. R., Myers, B. C. & Hirohata, T. Animal fat consumption and prostate cancer: a prospective study in Hawaii. *Epidemiology (Cambridge, Mass)* **5**, 276–282 (1994).

94. Ellison, L. F. Tea and other beverage consumption and prostate cancer risk: a Canadian retrospective cohort study. *European journal of cancer prevention: the official journal of the European Cancer Prevention Organisation (ECP)* **9**, 125–130 (2000).
95. Allen, N. E. *et al.* A prospective study of diet and prostate cancer in Japanese men. *Cancer causes & control: CCC* **15**, 911–920, doi: 10.1007/s10552-004-1683-y (2004).
96. Shafique, K. *et al.* Coffee consumption and prostate cancer risk: further evidence for inverse relationship. *Nutrition journal* **11**, 42, doi: 10.1186/1475-2891-11-42 (2012).
97. Wilson, K. M., Giovannucci, E. L. & Mucci, L. A. Lifestyle and dietary factors in the prevention of lethal prostate cancer. *Asian journal of andrology* **14**, 365–374, doi: 10.1038/aja.2011.142 (2012).
98. Bosire, C. *et al.* Coffee consumption and the risk of overall and fatal prostate cancer in the NIH-AARP Diet and Health Study. *Cancer causes & control: CCC* **24**, 1527–1534, doi: 10.1007/s10552-013-0229-6 (2013).
99. Discacciati, A. *et al.* Coffee consumption and risk of localized, advanced and fatal prostate cancer: a population-based prospective study. *Annals of oncology: official journal of the European Society for Medical Oncology/ESMO* **24**, 1912–1918, doi: 10.1093/annonc/mdt105 (2013).
100. Li, Q. *et al.* Coffee consumption and the risk of prostate cancer: the Ohsaki Cohort Study. *British journal of cancer* **108**, 2381–2389, doi: 10.1038/bjc.2013.238 (2013).
101. Tverdal, A. Boiled coffee consumption and the risk of prostate cancer: follow-up of 224,234 Norwegian men 20–69 years. *British journal of cancer* **112**, 576–579, doi: 10.1038/bjc.2014.645 (2015).
102. Vatten, L. J., Solvoll, K. & Loken, E. B. Coffee consumption and the risk of breast cancer. A prospective study of 14,593 Norwegian women. *British journal of cancer* **62**, 267–270 (1990).
103. Hoyer, A. P. & Engholm, G. Serum lipids and breast cancer risk: a cohort study of 5,207 Danish women. *Cancer causes & control: CCC* **3**, 403–408 (1992).
104. Folsom, A. R., McKenzie, D. R., Bisgard, K. M., Kushi, L. H. & Sellers, T. A. No association between caffeine intake and postmenopausal breast cancer incidence in the Iowa Women's Health Study. *American journal of epidemiology* **138**, 380–383 (1993).
105. Key, T. J. *et al.* Soya foods and breast cancer risk: a prospective study in Hiroshima and Nagasaki, Japan. *British journal of cancer* **81**, 1248–1256, doi: 10.1038/sj.bjc.6690837 (1999).
106. Michels, K. B., Holmberg, L., Bergkvist, L. & Wolk, A. Coffee, tea, and caffeine consumption and breast cancer incidence in a cohort of Swedish women. *Annals of epidemiology* **12**, 21–26 (2002).
107. Hirvonen, T. *et al.* Consumption of antioxidant-rich beverages and risk for breast cancer in French women. *Annals of epidemiology* **16**, 503–508, doi: 10.1016/j.annepidem.2005.09.011 (2006).
108. Ganmaa, D. *et al.* Coffee, tea, caffeine and risk of breast cancer: a 22-year follow-up. *International journal of cancer. Journal international du cancer* **122**, 2071–2076, doi: 10.1002/ijc.23336 (2008).
109. Ishitani, K., Lin, J., Manson, J. E., Buring, J. E. & Zhang, S. M. Caffeine consumption and the risk of breast cancer in a large prospective cohort of women. *Archives of internal medicine* **168**, 2022–2031, doi: 10.1001/archinte.168.18.2022 (2008).
110. Larsson, S. C., Bergkvist, L. & Wolk, A. Coffee and black tea consumption and risk of breast cancer by estrogen and progesterone receptor status in a Swedish cohort. *Cancer causes & control: CCC* **20**, 2039–2044, doi: 10.1007/s10552-009-9396-x (2009).
111. Wilson, K. M. *et al.* Dietary acrylamide intake and risk of premenopausal breast cancer. *American journal of epidemiology* **169**, 954–961, doi: 10.1093/aje/kwn421 (2009).
112. Bhoo Pathy, N. *et al.* Coffee and tea intake and risk of breast cancer. *Breast cancer research and treatment* **121**, 461–467, doi: 10.1007/s10549-009-0583-y (2010).
113. Boggs, D. A. *et al.* Tea and coffee intake in relation to risk of breast cancer in the Black Women's Health Study. *Cancer causes & control: CCC* **21**, 1941–1948, doi: 10.1007/s10552-010-9622-6 (2010).
114. Fagherazzi, G., Touillaud, M. S., Boutron-Ruault, M. C., Clavel-Chapelon, F. & Romieu, I. No association between coffee, tea or caffeine consumption and breast cancer risk in a prospective cohort study. *Public health nutrition* **14**, 1315–1320, doi: 10.1017/s1368980011000371 (2011).
115. Gierach, G. L. *et al.* Coffee intake and breast cancer risk in the NIH-AARP diet and health study cohort. *International journal of cancer. Journal international du cancer* **131**, 452–460, doi: 10.1002/ijc.26372 (2012).
116. Snowdon, D. A. & Phillips, R. L. Coffee consumption and risk of fatal cancers. *American journal of public health* **74**, 820–823 (1984).
117. Larsson, S. C. & Wolk, A. Coffee consumption is not associated with ovarian cancer incidence. *Cancer epidemiology, biomarkers & prevention: a publication of the American Association for Cancer Research, cosponsored by the American Society of Preventive Oncology* **14**, 2273–2274, doi: 10.1158/1055-9965.epi-05-0280 (2005).
118. Silveira, S. A., Jain, M., Howe, G. R., Miller, A. B. & Rohan, T. E. Intake of coffee and tea and risk of ovarian cancer: a prospective cohort study. *Nutrition and cancer* **58**, 22–27, doi: 10.1080/01635580701307945 (2007).
119. Steevens, J., Schouten, L. J., Verhage, B. A., Goldbohm, R. A. & van den Brandt, P. A. Tea and coffee drinking and ovarian cancer risk: results from the Netherlands Cohort Study and a meta-analysis. *British journal of cancer* **97**, 1291–1294, doi: 10.1038/sj.bjc.6604008 (2007).
120. Lueth, N. A., Anderson, K. E., Harnack, L. J., Fulkerson, J. A. & Robien, K. Coffee and caffeine intake and the risk of ovarian cancer: the Iowa Women's Health Study. *Cancer causes & control: CCC* **19**, 1365–1372, doi: 10.1007/s10552-008-9208-8 (2008).
121. Tworoger, S. S., Gertig, D. M., Gates, M. A., Hecht, J. L. & Hankinson, S. E. Caffeine, alcohol, smoking, and the risk of incident epithelial ovarian cancer. *Cancer* **112**, 1169–1177, doi: 10.1002/cncr.23275 (2008).
122. Shimazu, T. *et al.* Coffee consumption and risk of endometrial cancer: a prospective study in Japan. *International journal of cancer. Journal international du cancer* **123**, 2406–2410, doi: 10.1002/ijc.23760 (2008).
123. Friberg, E., Orsini, N., Mantzoros, C. S. & Wolk, A. Coffee drinking and risk of endometrial cancer—a population-based cohort study. *International journal of cancer. Journal international du cancer* **125**, 2413–2417, doi: 10.1002/ijc.24543 (2009).
124. Giri, A. *et al.* Caffeinated coffee, decaffeinated coffee and endometrial cancer risk: a prospective cohort study among US postmenopausal women. *Nutrients* **3**, 937–950, doi: 10.3390/nu3110937 (2011).
125. Je, Y., Hankinson, S. E., Tworoger, S. S., De Vivo, I. & Giovannucci, E. A prospective cohort study of coffee consumption and risk of endometrial cancer over a 26-year follow-up. *Cancer epidemiology, biomarkers & prevention: a publication of the American Association for Cancer Research, cosponsored by the American Society of Preventive Oncology* **20**, 2487–2495, doi: 10.1158/1055-9965.epi-11-0766 (2011).
126. Gunter, M. J. *et al.* A prospective investigation of coffee drinking and endometrial cancer incidence. *International journal of cancer. Journal international du cancer* **131**, E530–536, doi: 10.1002/ijc.26482 (2012).
127. Uccella, S. *et al.* Intake of coffee, caffeine and other methylxanthines and risk of Type I vs Type II endometrial cancer. *British journal of cancer* **109**, 1908–1913, doi: 10.1038/bjc.2013.540 (2013).
128. Gavrilyuk, O. *et al.* High coffee consumption and different brewing methods in relation to postmenopausal endometrial cancer risk in the Norwegian women and cancer study: a population-based prospective study. *BMC women's health* **14**, 48, doi: 10.1186/1472-6874-14-48 (2014).
129. Weiderpass, E. *et al.* Endometrial cancer in relation to coffee, tea, and caffeine consumption: a prospective cohort study among middle-aged women in Sweden. *Nutrition and cancer* **66**, 1132–1143, doi: 10.1080/01635581.2014.948214 (2014).

130. Merritt, M. A. *et al.* Investigation of dietary factors and endometrial cancer risk using a nutrient-wide association study approach in the EPIC and Nurses' Health Study (NHS) and NHSII. *Cancer epidemiology, biomarkers & prevention: a publication of the American Association for Cancer Research, cosponsored by the American Society of Preventive Oncology* **24**, 466–471, doi: 10.1158/1055-9965.epi-14-0970 (2015).
131. Takezaki, T. *et al.* Diet and lung cancer risk from a 14-year population-based prospective study in Japan: with special reference to fish consumption. *Nutrition and cancer* **45**, 160–167, doi: 10.1207/s15327914nc4502_04 (2003).
132. Veierod, M. B., Thelle, D. S. & Laake, P. Diet and risk of cutaneous malignant melanoma: a prospective study of 50,757 Norwegian men and women. *International journal of cancer. Journal international du cancer* **71**, 600–604 (1997).
133. Lofffield, E. *et al.* Coffee drinking and cutaneous melanoma risk in the NIH-AARP diet and health study. *Journal of the National Cancer Institute* **107**, doi: 10.1093/jnci/dju421 (2015).
134. Wu, H., Reeves, K. W., Qian, J. & Sturgeon, S. R. Coffee, tea, and melanoma risk among postmenopausal women. *European journal of cancer prevention: the official journal of the European Cancer Prevention Organisation (ECP)* **24**, 347–352, doi: 10.1097/cej.0000000000000093 (2015).
135. Wang, A. *et al.* Citrus Fruit Intake Substantially Reduces the Risk of Esophageal Cancer: A Meta-Analysis of Epidemiologic Studies. *Medicine* **94**, e1390, doi: 10.1097/md.0000000000001390 (2015).
136. Asaad, N. A., Zeng, Z. C., Guan, J., Thacker, J. & Iliakis, G. Homologous recombination as a potential target for caffeine radiosensitization in mammalian cells: reduced caffeine radiosensitization in XRCC2 and XRCC3 mutants. *Oncogene* **19**, 5788–5800, doi: 10.1038/sj.onc.1203953 (2000).
137. Joerges, C., Kuntze, I. & Herzinger, T. Induction of a caffeine-sensitive S-phase cell cycle checkpoint by psoralen plus ultraviolet A radiation. *Oncogene* **22**, 6119–6128, doi: 10.1038/sj.onc.1206613 (2003).
138. Cavin, C. *et al.* Cafestol and kahweol, two coffee specific diterpenes with anticarcinogenic activity. *Food and chemical toxicology: an international journal published for the British Industrial Biological Research Association* **40**, 1155–1163 (2002).
139. Majer, B. J. *et al.* Coffee diterpenes prevent the genotoxic effects of 2-amino-1-methyl-6-phenylimidazo[4,5-b]pyridine (PhIP) and N-nitrosodimethylamine in a human derived liver cell line (HepG2). *Food and chemical toxicology: an international journal published for the British Industrial Biological Research Association* **43**, 433–441, doi: 10.1016/j.fct.2004.11.009 (2005).
140. Feng, R. *et al.* Inhibition of activator protein-1, NF- κ B, and MAPKs and induction of phase 2 detoxifying enzyme activity by chlorogenic acid. *The Journal of biological chemistry* **280**, 27888–27895, doi: 10.1074/jbc.M503347200 (2005).
141. Dong, S. *et al.* Low Concentration of Caffeine Inhibits the Progression of the Hepatocellular Carcinoma via Akt Signaling Pathway. *Anti-cancer agents in medicinal chemistry* **15**, 484–492 (2015).
142. Fotsis, T. *et al.* The endogenous oestrogen metabolite 2-methoxyoestradiol inhibits angiogenesis and suppresses tumour growth. *Nature* **368**, 237–239, doi: 10.1038/368237a0 (1994).
143. Higdon, J. V. & Frei, B. Coffee and health: a review of recent human research. *Critical reviews in food science and nutrition* **46**, 101–123, doi: 10.1080/10408390500400009 (2006).
144. Potter, J. D. Reconciling the epidemiology, physiology, and molecular biology of colon cancer. *Jama* **268**, 1573–1577 (1992).
145. Leviton, A. & Cowan, L. A review of the literature relating caffeine consumption by women to their risk of reproductive hazards. *Food and chemical toxicology: an international journal published for the British Industrial Biological Research Association* **40**, 1271–1310 (2002).

Acknowledgements

We thank for their help Nature Publishing Group Language Editing in English language revision of this manuscript. We also thank for the support of International Science and Technology Cooperation Projects (2015DFA30650 and 2010DFB33720), Capital Special Research Project for Health Development (2014-2-4012), Capital research project for the characteristics clinical application (Z151100004015170) and Program for New Century Excellent Talents in University (NCET-11-0288).

Author Contributions

A.W. designed the study and wrote this manuscript. S.W. and C.Z. searched database and reviewed studies. C.H., C.W., X.W., X.Y., H.Z., Y.M. and L.H. collected and analyzed data. X.S. and H.Z. coordinated and provided financial support for this work.

Additional Information

Supplementary information accompanies this paper at <http://www.nature.com/srep>

Competing financial interests: The authors declare no competing financial interests.

How to cite this article: Wang, A. *et al.* Coffee and cancer risk: A meta-analysis of prospective observational studies. *Sci. Rep.* **6**, 33711; doi: 10.1038/srep33711 (2016).



This work is licensed under a Creative Commons Attribution 4.0 International License. The images or other third party material in this article are included in the article's Creative Commons license, unless indicated otherwise in the credit line; if the material is not included under the Creative Commons license, users will need to obtain permission from the license holder to reproduce the material. To view a copy of this license, visit <http://creativecommons.org/licenses/by/4.0/>

© The Author(s) 2016