

# Vascular proteomics in metabolic and cardiovascular diseases

■ M. Lynch<sup>1</sup>, J. Barallobre-Barreiro<sup>1</sup>, M. Jahangiri<sup>2</sup> & M. Mayr<sup>1</sup>

From the <sup>1</sup>King's British Heart Foundation Centre, King's College London; and <sup>2</sup>St George's Hospital, NHS Trust, London, UK

**Abstract.** Lynch M, Barallobre-Barreiro J, Jahangiri M, Mayr M (King's British Heart Foundation Centre, King's College London, London; St George's Hospital, NHS Trust, London, UK). Vascular proteomics in metabolic and cardiovascular diseases. (Review). *J Intern Med* 2016; **280**: 325–338.

The vasculature is essential for proper organ function. Many pathologies are directly and indirectly related to vascular dysfunction, which causes significant morbidity and mortality. A common pathophysiological feature of diseased vessels is extracellular matrix (ECM) remodelling. Analysing the protein composition of the ECM by conventional antibody-based techniques is challenging; alternative splicing or post-translational modifications, such as glycosylation, can mask epitopes required for antibody recognition. By contrast, proteomic analysis by mass spectrometry enables the study of proteins without the constraints of

antibodies. Recent advances in proteomic techniques make it feasible to characterize the composition of the vascular ECM and its remodelling in disease. These developments may lead to the discovery of novel prognostic and diagnostic markers. Thus, proteomics holds potential for identifying ECM signatures to monitor vascular disease processes. Furthermore, a better understanding of the ECM remodelling processes in the vasculature might make ECM-associated proteins more attractive targets for drug discovery efforts. In this review, we will summarize the role of the ECM in the vasculature. Then, we will describe the challenges associated with studying the intricate network of ECM proteins and the current proteomic strategies to analyse the vascular ECM in metabolic and cardiovascular diseases.

**Keywords:** apolipoproteins, atherosclerosis, diabetes, proteomics, restenosis, vascular biology.

## Introduction

Vascular smooth muscle cells (VSMCs) synthesize and maintain a complex meshwork of extracellular matrix (ECM) [1]. Constituting around 300 proteins, the ECM is an intricate three-dimensional, noncellular lattice composed of elastin, collagen, proteoglycans (PGs) and glycoproteins [2]. The function of the ECM goes beyond providing a supporting framework for the cellular constituents. The ECM is increasingly being recognized as a dynamic structure with multifaceted functions. In addition to providing physical support for tissue integrity and elasticity, the ECM serves as a reservoir for bioactive molecules, including growth factors, cytokines and proteases, that are required for tissue homeostasis [3]. The importance of the ECM is demonstrated by the substantial number of pathologies related to ECM abnormalities [4]. Of more relevance, ECM dysregulation has been implicated in diseases affecting the vasculature. These include but are not

limited to aneurysms [5], vein graft failure [6], varicose veins [7], diabetic vasculopathy [8], restenosis and atherosclerosis [9].

## The ECM of the vasculature

The vascular ECM can be divided into two lower-order structures: the basement membrane (BM) and the interstitial matrix.

The BM is a specialized ECM protein complex separating the endothelium from the underlying connective tissue [10]. The close proximity to the cells provides mechanical stability and controls cell organization and polarity. Some of the main protein components of the BM include laminins; collagens IV, XV and XVIII; perlecan; agrin; and nidogen [11]. Perlecan is a particularly large PG (469 kDa) and is essential for the stability of the BM. It has domains for interaction with other components of the BM such as collagen IV and laminins [12]. The N-terminal domain contains the

majority of anchoring sites for heparan sulphate PGs, which combined with their position in the BM enable perlecan to participate in signalling events [12]. It is interesting that endorepellin, an N-terminal peptide from perlecan released by proteolytic action, has important anti-angiogenic properties [13].

The interstitial matrix determines most of the mechanical properties of the tissue [14]. Although anchored to the BM, it forms a distinct functional unit that provides the means (via an extracellular compartment) through which signals are distributed and nutrients and fibroblasts migrate [15]. The main components of the interstitial matrix in the vessel wall are elastin, collagens I, III, VI and XII and PGs [16].

#### *Collagen*

Collagens are a large family of proteins with triple helix conformations and are present in many tissues. Structurally, the collagens contain three alpha polypeptide chains that form a right-handed coil with hydrogen bonds linking adjacent chains [17]. Heterotrimeric forms in the vasculature include collagens I, IV, V and VI, whilst the homotrimeric structure (with three identical chains) includes for example collagens III, XVIII and XV. The extensive number of collagen subtypes gives rise to an equally extensive variety of functions, ranging from the structural support of tissues to cell adhesion and migration, angiogenesis and tissue repair. The fibrillar forms of collagen are the main tensile element in many tissues. In the vasculature, fibrillar collagens are mainly represented by types I, III and V [18]. By contrast, other collagen types form networks (i.e. collagens IV and VIII), which are key components of the BM. Additional forms of collagen are important for cell adhesion and organization (i.e. collagens VI and XIV) and anchoring of other components within the ECM (i.e. collagen VII). Furthermore, some collagens have been found to contain domains that exert regulatory roles when released by proteolytic activity. This includes, for example, endostatin, a C-terminal fragment of collagen XVIII. Additionally, new forms of collagens have been identified with transmembrane domains, further adding to the ubiquity and multifunctionality of this family of proteins. The detailed classification of collagens has been extensively reviewed elsewhere [19].

#### *Elastin*

Elastin is the principal component of elastin lamellae, the fenestrated layers present in the tunica media of arteries. Similar to fibrillar collagens, the functional form of elastin is a cross-linked amalgamate of tropoelastins, that is the *elastin* gene product. Elastic recoil imparted by elastic fibres is an essential property for normal cardiovascular function [16]. Briefly, large elastic arteries allow blood pressure to be maintained throughout the cardiac cycle by storing a portion of the stroke volume with each systole. Subsequently, discharging that volume with diastole reduces the left ventricular afterload [20]. This phenomenon is known as the 'Windkessel' effect. Less compliant elastic arteries result in a diminution of the Windkessel effect with age and lead to hypertension, predisposing to conditions such as myocardial infarction, stroke and heart failure.

#### *Glycoproteins*

Glycosylation, the covalent attachment of carbohydrate molecules to a core protein, is a common post-translational modification (PTM) of ECM proteins. There are two types of glycoproteins: N-glycosylated glycoproteins, in which the sugar is attached to the amide nitrogen of asparagine, and O-glycosylated glycoproteins, in which the sugar is attached to an oxygen atom of hydroxylysine, hydroxyproline (Hyp), serine or threonine [21]. Due to the presence of specialized domains and carbohydrate residues, glycoproteins are essential components for cell adhesion and for mediating attachment of cells to the BM [21]. Laminins and fibronectin are the two most important examples of this class of glycoprotein.

#### *Proteoglycans*

Originally identified as major components of cartilage, PGs were for years thought to be specific for cartilage [22]. However, they have since been found in virtually all tissues, where they are distributed within the interstitial matrix and BM. PGs have a basic structure comprising a core protein and a variable number of glycosaminoglycan (GAG) chains usually attached through O-glycosidic linkages to serine residues in the core protein. One classification system of PGs is based on the type of attached GAGs: (i) chondroitin sulphate and dermatan sulphate, consisting of repeating disaccha-

ride units of galactosamine and either glucuronic acid or iduronic acid, (ii) heparan sulphate, consisting of repeating disaccharide units of glucosamine and either glucuronic acid or iduronic acid, and (iii) keratan sulphate, consisting of repeating disaccharide units of glucosamine and galactose [23].

Within the vessel wall, the two most abundant PGs are large aggregating PGs and small leucine-rich PGs (SLRPs).

Versican is an important large aggregating PG in the vessel wall, not least due to its involvement in the retention of lipoproteins and development of atherosclerosis (reviewed by Wight and Merrilees [24]). Versican has also been implicated in smooth muscle cell proliferation and migration contributing to restenosis [25]. As a chondroitin sulphate PG, versican is secreted with a structure consisting of a large globular domain at each end and an intermediate domain carrying chondroitin sulphate chains. Through its globular domains, versican interacts with hyaluronic acid. Versican has high homology at the globular domains to other PGs that bind hyaluronic acid ('hyalecticans' such as aggrecan, brevican and neurican), but the intermediate region varies considerably in terms of sequence, length and number of chondroitin sulphate chains. Splice variants, truncated glycoforms and stable degradation products further increase the diversity of this PG family [26].

Small leucine-rich PGs are a family of biologically active ECM components belonging to the leucine-rich repeat superfamily of proteins [27]. Their dominant feature is the presence of leucine-rich repeats flanked by cysteine clusters in the core protein. After their synthesis, SLRPs are secreted into the pericellular space where they interact with different extracellular molecules and the plasma membrane, modulating a variety of processes including collagen fibrillogenesis and TGF $\beta$  sequestration [28, 29]. Prominent vascular SLRPs include decorin, biglycan and lumican [30]. Studies in knockout mice have shown some degree of functional overlap between different SLRPs [31].

There are several families of PGs in which the protein core is partly integrated into the plasma membrane, with their GAG-containing regions exposed on the extracellular side of the membrane. These PGs are important for anchoring and signalling between cells and the ECM. Syndecans and

dystroglycans are part of this group and mediate cell–matrix interactions.

### PTMs of the ECM

Extracellular matrix proteins are known to undergo extensive PTMs such as hydroxylation and glycosylation.

#### *Hydroxylation*

As mentioned above, all collagens form triple helices and this characteristic increases molecular stability and provides resistance to tensile stress, which is particularly important for fibril-forming collagens. Different forms of collagen exist in the vasculature, but in general, a common pattern can be observed for amino acid sequences of every type of collagen; each chain has enriched triplet repeats, starting with a glycine residue followed by proline and Hyp. The presence of this repetitive sequence is key for the constitution of the right-handed helix, and Hyps provide the substrate for the formation of hydrogen bonds between the adjacent alpha chains. Moreover, this putative triplet is modified in different forms of collagen, resulting in multiple permutations that are responsible for the functional and spatial diversity of the collagen family [32]. During collagen synthesis, Hyp is derived from proline oxidation and the modification is introduced at specific positions once the protein has been synthesized. Then, collagens are secreted into the extracellular space. Prolyl-4-hydroxylase and prolyl-3-hydroxylase catalyse the hydroxylation of specific proline residues in the lumen of the endoplasmic reticulum. The former enzyme reacts on proline within a motif of X-Pro-Gly (where X is any amino acid), and the latter appears to require a Pro-4-Hyp-Gly sequence [33, 34].

#### *Glycosylation*

Glycosylation is important for correct folding and stability whilst also contributing to the biological functions of glycoproteins [21]. ECM proteins tend to be extensively modified by addition of N- and O-linked large, repetitive GAGs and shorter and diverse N- and O-linked oligosaccharides. N-linked glycosylation occurs at asparagine within a consensus sequence of Asn-X-Ser/Thr (N-X-S/T), where X can be any amino acid except proline [35]. UniProtKB contains 15,828 sites for the human proteome, where the N-X-S/T sequon is annotated as the

N-glycosylation site. It has been suggested that only 27% of all N-X-S/T sequons are glycosylated [36], highlighting the importance of studying glycosylation to better understand the properties of the ECM. Unlike N-glycosylation, there is no consensus sequence for O-linked glycosylation, which occurs on the amino acids serine and threonine.

### Degradation of the vascular ECM

All vascular cells have the ability to remodel their surrounding ECM. The ECM is subject to the action of proteolytic enzymes, which maintain a dynamic equilibrium between protein synthesis and degradation. Amongst these, enzymes are the members of a disintegrin and metalloproteinase (ADAM) and a disintegrin and metalloproteinase with thrombospondin motifs (ADAMTS) families, serine proteases (e.g. plasmin, neutrophil-derived elastase and cathepsin G), cysteine proteases (cathepsins B, L and S), aspartyl proteases (cathepsin D) and matrix metalloproteinases (MMPs).

#### Matrix metalloproteinases

Matrix metalloproteinases are a family of 23 proteases that use zinc as a cofactor. In general, they are synthesized as inactive pro-MMPs in which the catalytic domain remains inaccessible due to the interaction of the N-terminal propeptide with  $Zn^{2+}$ . Once the propeptide is released by proteolytic action, the catalytic domain is exposed and the enzyme becomes active. After being secreted, pro-MMPs bind to different molecules of the ECM and lie dormant, forming a reservoir that can be activated immediately upon demand [37]. Due to the effectiveness of these enzymes, establishing strict control of their activity is essential. The tissue inhibitors of matrix metalloproteinases (TIMPs) are low molecular weight proteins that bind avidly to MMPs, inhibiting their activity [38]. TIMP-1, TIMP-2 and TIMP-3 collectively inhibit all metalloproteinases with different substrate specificity [1]. MMP and TIMP activities with respect to cardiovascular disease (CVD) have attracted most attention so far, and although inhibitory antibodies of MMPs have shown effects in animal models, there is significant disparity when tested in patients [15].

#### ADAMs and ADAMTSs

The ADAMs family, which is related to the MMPs, can be categorized as either membrane-anchored

ADAMs or as secreted ADAMTSs [39]. Given their greater propensity to interact with the ECM, we will primarily focus on the ADAMTS family.

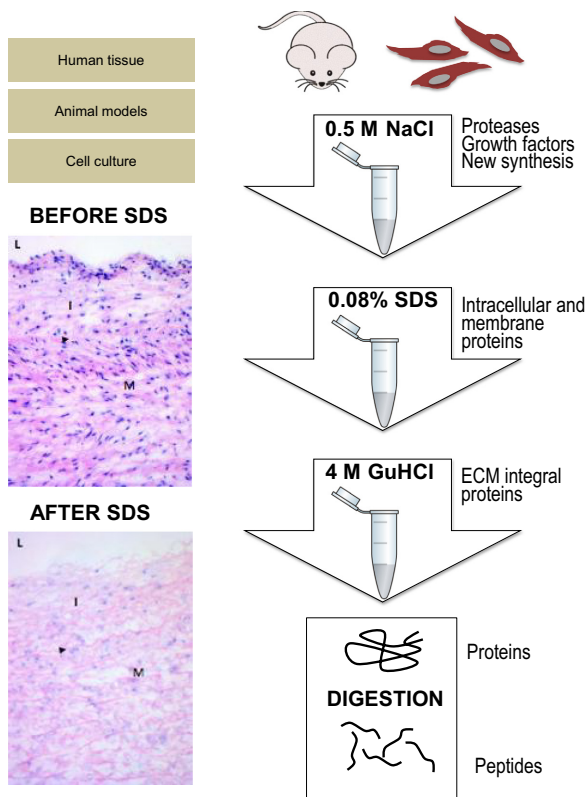
The ADAMTSs are synthesized as inactive pre/pro-enzymes and contain, like MMPs, a metalloproteinase catalytic domain. The enzyme furin has been implicated in pro-protein processing and subsequent activation. However, other enzymes may be involved and there is evidence to suggest that ADAMTS-7 [40] and ADAMTS-13 [41] are catalytically active with their pro-domain attached. The major ECM-related functions of the ADAMTS family appear to be the cleavage of the large aggregating PGs (aggrecan and versican) as well as the processing of pro-collagen to collagen via removal of the N-terminal pro-peptides [42].

Seminal work by Jonsson-Rylander *et al.* [43] indicated a role for ADAMTS-1 in atherosclerosis. The authors hypothesized that the cleavage of ECM proteins may facilitate VSMC migration based on the increased ADAMTS-1 expression observed in atherosclerotic plaques. Our group highlighted the importance of ADAMTS-5 in a mouse model of atherosclerosis [44]: lower levels of ADAMTS-5 accompanied accumulation of versican in aortas of apolipoprotein (apo)E-knockout mice. Versican cleavage was barely detectable in aortas from ADAMTS-5-deficient mice providing conclusive evidence that in mice, ADAMTS-5 is the key enzyme for versican degradation in the vasculature.

#### Proteomic studies of the vascular ECM

A comprehensive characterization of the ECM is essential for the understanding of vascular disease processes. Initially, the vascular ECM was mainly studied by antibody staining or by mRNA analysis. For example, Kirsch *et al.* [45] compared protein expression between human varicose and normal veins with antibodies against collagen IV, laminin, fibronectin and tenascin. Although the authors found significant differences between the diseased and healthy specimens, the study was limited to only a few ECM proteins. In cardiovascular research, proteomic studies predominantly investigate cellular proteins; thus, the extracellular space remains relatively underexplored. Even the ECM composition of different vascular territories is largely unknown. The detection of ECM proteins by proteomics was initially limited by problems in extracting insoluble ECM proteins and contamination from more abundant cytosolic and mitochondrial pro-





**Fig. 1** Proteomics workflow targeting the extracellular matrix (ECM). Biochemical subfractionation allows enrichment of ECM proteins. Vascular tissues of human origin or those obtained from animal models of cardiovascular disease are initially incubated in  $0.5 \text{ mol L}^{-1}$  NaCl to extract proteases, growth factors and newly synthesized ECM proteins. A subsequent decellularization step is performed with a buffer containing sodium dodecyl sulphate (SDS) before integral, polymeric ECM proteins are extracted with guanidine hydrochloride (GuHCl). Proteins obtained after sequential extraction are digested into peptides before liquid chromatography–tandem mass spectrometry analysis. The histological panel (haematoxylin and eosin staining) demonstrates the efficacy of SDS in removing cellular components before extraction of ECM proteins in human aortas. L, lumen; I, intima; M, media. Adapted from Didangelos *et al.* [18].

teins. Since then, we and others have employed a stepwise extraction of ECM proteins that is amenable to analysis by liquid chromatography–tandem mass spectrometry (LC-MS/MS) [18] (Fig. 1).

#### *Proteomics for the analysis of ECM composition*

In one of a few studies that targeted the ECM, Talusan *et al.* [46] performed proteomic analysis on

human pre-atherosclerotic lesions from the carotid artery after PG extraction. Using internal thoracic arteries for a comparative control, they observed increased levels of lumican in the atherosclerotic-prone carotid arteries. In the 10 years since this important work, no comprehensive proteomic analysis of the ECM has been performed in atherosclerosis. This is surprising, especially given the recent technological and methodological developments. Similar approaches have been utilized effectively in characterizing the composition of the ECMs of other normal and diseased tissues [47]; in addition to our studies of the ECM signatures in abdominal aortic aneurysm [48] and aorta [18], Hansen and colleagues showed differential expression of a number of ECM proteins in the internal thoracic artery associated with arterial stiffness, as assessed by pulse wave velocity [49]. The same group also found that levels of BM proteins were elevated in internal thoracic arteries of patients with type 2 diabetes mellitus [50].

There are few analogous studies, illustrating a significant void in the current literature (Table 1).

#### *Proteomics for the analysis of PTMs of the vascular ECM*

As discussed above, two PTMs are key for the analysis of the ECM: hydroxylation and glycosylation. The inclusion of hydroxylation of proline (i.e. a proline 16 Da heavier due to addition of  $\text{OH}^-$ ) in search parameters improves the detection of collagens (Fig. 2). Figure 3 shows the effect on selected ECM proteins (biglycan, mimecan and galectin-1) of treating tissue extracts either with enzymes for GAG removal alone or a combination with five additional enzymes for the removal of complex oligosaccharides. Biglycan contains small oligosaccharide residues as well as larger GAGs. Few ECM proteins (e.g. galectin-1) are devoid of glycosylations.

#### *Proteomics for the analysis of ECM degradation*

As mentioned above, another important factor in ECM vessel wall remodelling is the role of MMPs. The earliest studies linking MMPs to vascular remodelling concerned intimal thickening following balloon angioplasty and vein grafting [51]. Indeed, knockout studies in mice showed that MMP-2, MMP-9 and MMP-14 were essential for neointimal hyperplasia. Consistent with these findings, *TIMP* gene transfer was also shown to hinder intima thickening in animal models of vascular balloon

**Table 1** Proteomics analysis after extracellular matrix (ECM) enrichment

Study/year	Tissue/species	Extraction method	Findings
Didangelos <i>et al.</i> (2010) [18]	Aorta (Human)	0.5 mol L <sup>-1</sup> NaCl (4 h) 0.08% SDS (4 h) 4 mol L <sup>-1</sup> GuHCl (48 h)	321 total proteins 84 extracellular proteins
Naba <i>et al.</i> (2012) [81]	Lung (Mouse)	Compartmental Protein Extraction kit	184 total proteins 55 matrisome proteins
de Castro Brás <i>et al.</i> (2013) [90]	Left ventricle (Mouse)	0.5 mol L <sup>-1</sup> NaCl (O/N) 1% SDS (3–5 days) 4 mol L <sup>-1</sup> GuHCl (48 h)	157 total proteins 17 ECM proteins
Brachvogel <i>et al.</i> (2013) [91]	Cartilage (Mouse)	1 mol L <sup>-1</sup> NaCl (24 h) 4 mol L <sup>-1</sup> GuHCl (24 h)	397 total proteins
Barallobre-Barreiro <i>et al.</i> (2012) [92]	Left ventricle (Pig)	0.5 mol L <sup>-1</sup> NaCl (4 h) 0.08% SDS (4 h) 4 mol L <sup>-1</sup> GuHCl (48 h)	139 extracellular proteins
Decaris <i>et al.</i> (2014) [93]	Lung (Mouse)	0.5 mol L <sup>-1</sup> NaCl (2 h) 0.08% SDS (16 h) 4 mol L <sup>-1</sup> GuHCl (48 h)	N/A

injury [52]. However, despite showing promising signs as a potential therapeutic target, efforts to inhibit MMP activity using synthetic MMP inhibitors have yet to provide clinical benefits [53].

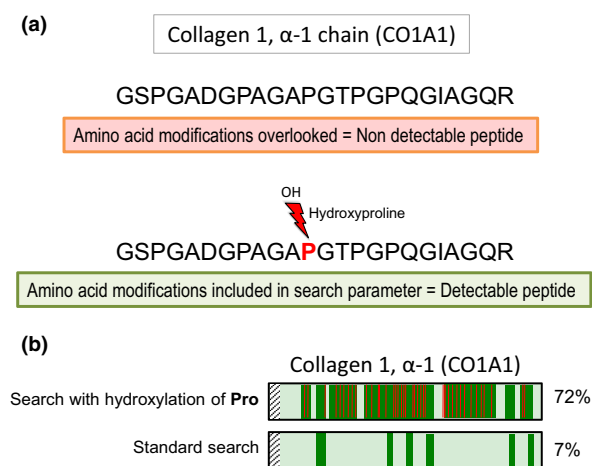
Seminal research by Henney *et al.* [54] implicated MMP-3 in the human atherosclerotic plaque, leading a paradigm shift away from the concept that the atheroma is an inert obstruction. Since then, a spectrum of MMPs and TIMPs has been shown to be responsible for plaque destabilization including collagenases MMP-1, MMP-2 and MMP-3 and TIMP-1 and TIMP-2. Much of our understanding of the role of MMPs in vascular diseases has come from transgenic or knockout mice with subsequent transcript and histological analysis; however, the results are often conflicting and confounding. For example, Luttun *et al.* [55] reported that MMP-9-null mice exhibited more stable plaques, compared to wild-type animals as a result of a reduction in plaque size, macrophage content, collagen deposition and elastin degradation, whereas Johnson *et al.* [56] suggested that MMP-9 was protective as the knockout model exhibited compositional changes associated with plaque instability.

We used proteomics to search for proteolytic fragments that were upregulated during ECM remod-

elling in abdominal aortic aneurysms [48]. Using human samples, we showed that the degradation of six glycoproteins was linked to MMP-12 activity. Similarly, we also used proteomics to identify potential substrates of other MMPs (MMP-3, MMP-9, MMP-14) in vascular tissues [57]. However, there is a need for more comprehensive analysis of the 'degradome' to investigate beyond the commonly studied MMPs.

#### Targeted proteomics

A limitation of contemporary LC-MS/MS is the bias towards highly abundant proteins. With large arteries and atherosclerotic vessels, this is exacerbated due to the higher cellular content and inflammatory cell infiltration in disease. Whilst enrichment steps have to a degree alleviated the problem, bias still remains. In an untargeted discovery proteomic experiment, the selection of peptides for fragmentation is a stochastic process leading to incompleteness of data and run-to-run variability. Instead, a targeted proteomic strategy can be employed that offers increased selectivity, sensitivity and quantitative accuracy. The most common targeted strategies are known as selected reaction monitoring and multiple reaction monitoring [58, 59]. In essence, targeted proteomic analyses only consider the peptides of interest, as



**Fig. 2** Proline hydroxylation of collagens. Proline hydroxylation (*i.e.* 4-hydroxyproline and 3-hydroxyproline) is a common modification that confers stability to collagen triple helices. (a) Inclusion of this variable modification in the search parameters dramatically improves identification and quantification of collagen peptides. The example shown is a peptide spanning amino acid positions 935–958 of human collagen 1,  $\alpha$ -1 chain (CO1A1). (b) CO1A1 protein sequence coverage is also improved ~10-fold after searching liquid chromatography–tandem mass spectrometry data from human aortic specimen and including this variable PTM. Pro, proline.

defined by the user. Thus, analysis time is not wasted on other peptides from highly abundant or contaminating proteins. Typically, targeted proteomics is utilized as a means to validate discovery proteomic data as the amino acid sequence information of the protein of interest must be known and the best peptides for targeted proteomic analysis should have already been identified. Targeted proteomics provides a method to quantify low-abundance proteolytic fragments or protein isoforms [60, 61]. This is particularly useful given that antibodies are not always available for neopeptides generated after proteolytic cleavage of ECM proteins [57]. Targeted proteomics is also applicable for studying PTMs.

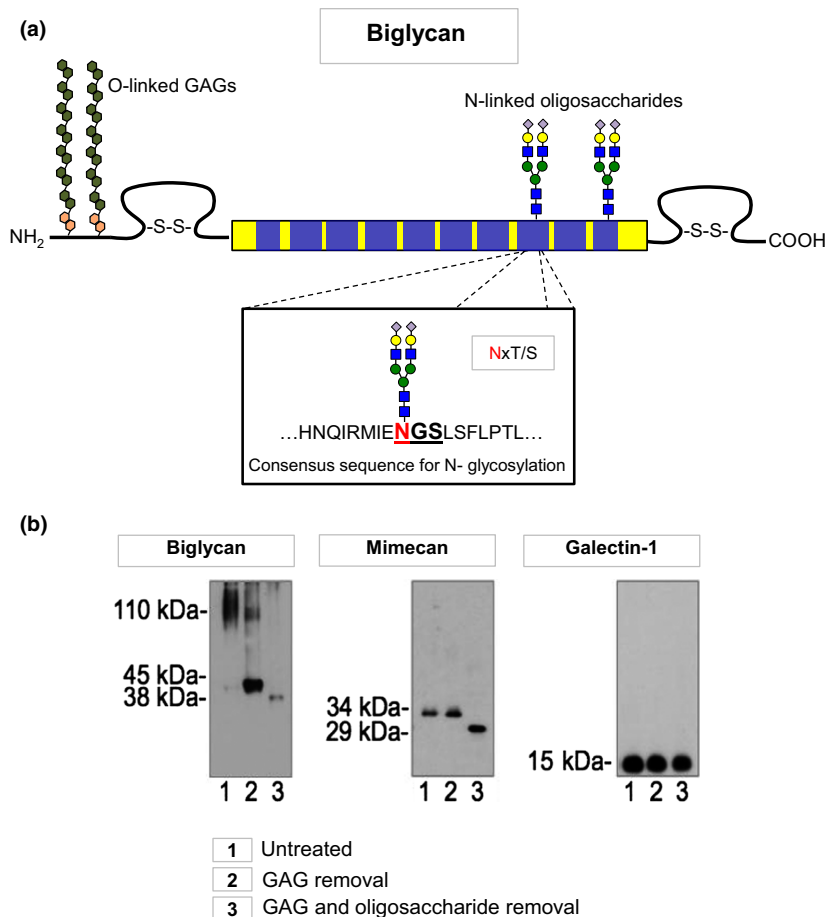
#### Glycoproteomics of the ECM

A common large-scale proteomic strategy for N-glycopeptide analysis utilizes a glycopeptide enrichment step followed by glycan removal. Typical methods to enrich glycosylated peptides involve the use of one or more of the following: lectins, hydrophilic interaction liquid chromatog-

raphy, hydrazide or graphite [62]. Subsequently, PNGase-F is used to remove the glycan moiety, serving two purposes: first, the core peptide can be analysed without interference from sugars during fragmentation; and secondly, via a deamidation reaction, PNGase-F converts the asparagine to aspartic acid. This conversion is characterized by a mass shift of 0.984 Da. If the reaction is performed in the presence of  $\text{H}_2\text{O}^{18}$  (water that contains an isotopic form of oxygen: oxygen-18 instead of oxygen-16), this leads to a mass shift of 2.98 Da [63] and further improves confidence that the site was glycosylated and the conversion did not occur spontaneously. We have previously treated proteins secreted by endothelial cells with PNGase-F in the presence of  $\text{O}^{18}$ -labelled water prior to LC-MS/MS analysis [64]. More recently, we applied the same method to more complex extracts from human vascular tissues. Treatment with PNGase-F in  $\text{O}^{18}$ -labelled water allowed the identification of peptides that contain glycosylated asparagines, leading to improved sequence coverage for heavily N-glycosylated ECM proteins such as the SLRPs decorin, biglycan and lumican, or the BM-related glycoprotein fibronectin. The combined analysis of the glycan (glycomics) [65, 66] and the protein (proteomics) forms the field of glycoproteomics. Enzymatically deglycosylating a glycoprotein allows for the separate analysis of the core protein and of the glycan [67], but the aim of glycoproteomics is to combine both analyses, which makes it a more challenging task: first, all proteins in the sample are digested into peptides, and then, the glycopeptides can be enriched followed by analysis by LC-MS/MS. The obtained fragmentation spectrum can be very complex, because it contains signals from the peptide backbone, the sugar moiety and a combination of both (peptide fragments with the sugar still attached) [68]. The interpretation of such spectra requires significant experience in interpretation, manual assignment and evaluation. Consequently, high-throughput analysis is precluded at present. Nevertheless, glycoproteomics can be used to systematically profile a given proteome [69].

#### Retention of lipoproteins in the vasculature

Further motivation for proteomic studies of the vascular ECM arises from our lack of understanding with regard to the ‘response-to-retention hypothesis’ in early atherosclerosis [70]. Evidence from biochemical and molecular biology studies now supports the theory that ECM proteins, in



**Fig. 3** Glycosylation of extracellular matrix (ECM) proteins. More than 90% of ECM proteins are glycosylated, which can affect protein identification with antibodies. (a) Attachment of N-linked oligosaccharides to ECM proteins occurs at specific consensus sequences. Biglycan is an example of a heavily glycosylated ECM protein. (b) Removal of glycosaminoglycans (GAGs) and small oligosaccharides or removal of GAGs alone affects protein migration by gel electrophoresis. Biglycan contains GAGs and oligosaccharides, and mimecan contains only N-linked oligosaccharides, whilst galectin-1 is a nonglycosylated ECM protein. The aim of glycoproteomics is the identification of the protein core and the attached glycan.

particular vascular PGs, are involved in the retention of lipoproteins. However, it is still not clear why some vessels are more susceptible to atherosclerosis than others. This disparity is likely to reflect inherent variations in vascular properties and may include differences in ECM composition in response to wall stress and shear flow that warrant proteomic investigation.

Progression of atherosclerosis involves the formation of a lipid-rich necrotic core, and, as part of the inherent repair process that ensues, a fibrous cap forms over the core [71]. The ECM constituents of this core along with the VSMC content have been inextricably linked to the stability of the plaque

[72]. Collagen I accounts for ~60% of the total protein in the fibrous cap, as corroborated by gene expression data from atherosclerotic lesions in mice [73]. In fact, the most over-expressed genes associated with intimal hyperplasia encode ECM proteins such as collagens I and III, in addition to PGs. Given the tensile strength of fibrillar collagens, it is perhaps unsurprising that their presence is associated with stable plaques. By contrast, vulnerable plaques are characterized by a thin cap and a reduction in fibrillar collagen. Intimal PGs are upregulated at sites of intimal thickening and contribute to the development of atherosclerosis by sequestering apoB-containing lipoproteins which in turn stimulate the canonical chronic inflamma-



tory response in the vessel wall. Thus, we have endeavoured to characterize the lipid content of vulnerable and stable plaques [74] and identify lipidomic signatures for CVD [75].

Given the vascular retention and accumulation of apoB-containing lipoproteins, the importance of remnants from triglyceride-rich lipoproteins has recently been recognized. Evidence from Mendelian randomized studies now suggests a primary role of triglyceride-rich lipoproteins in CVD [76, 77]. The lipolysis of triglycerides results in the conversion of chylomicrons into chylomicron remnants and very low-density lipoprotein (VLDL) particles into intermediate-density lipoprotein (IDL) and low-density lipoprotein (LDL). Lipoprotein lipase (attached to the endothelium of blood capillaries) mediates this process by hydrolysing the triglycerides carried in chylomicrons and VLDL. Besides LDL, the lipolysis of triglycerides yields triglyceride-depleted but cholesterol-rich remnants (chylomicron remnants, VLDL, and IDL in the nonfasting state, and VLDL and IDL in the fasting state). The underlying mechanism of remnant atherogenicity is thought to be similar to that of LDL; that is, the triglyceride-depleted and cholesterol-rich remnant particles are trapped by the connective tissue in the arterial wall. Chylomicrons and VLDL particles are too large to penetrate the arterial wall. Remnants, however, are small enough and may act in the same atherogenic way as LDL. Of interest, Varbo *et al.* provided evidence to suggest that remnants are causally associated with inflammation and ischaemic heart disease, whereas LDL was found to have only a causal relationship with ischaemic heart disease, indicating that the inflammatory component in atherosclerosis is predominantly driven by remnant particles [78]. Furthermore, it has been suggested that nonfasting remnant cholesterol levels may serve as a better biomarker to predict CVD [79]. Ultimately, a comprehensive analysis of molecular lipid species (lipidomics) and apolipoproteins is required in CVD (see review by Hinterwirth *et al.* [80]).

#### Other translational applications to vascular disorders

##### *ECM proteins as biomarkers*

Pursuing efforts to characterize ECM composition has potential beyond the description of ECM remodelling at a molecular level. Naba *et al.* [81] have shown that comparing the extracellular proteome of normal and cancerous tissues can lead to biomarker identification. More importantly, de

Kleijn *et al.* [82] found that the level of the ECM glycoprotein osteopontin in atherosclerotic plaques was predictive for CVD events. As described above, MMPs and TIMPs are currently believed to be the major proteolytic mediators in the vessel wall. Instead of circulating MMPs and TIMPs [83], the proteolytic fragments of ECM proteins could be used as measures of disease progression. This possibility is particularly appealing because of the release of these fragments into body fluids. For instance, serological levels of elastin peptides and the amino terminal of propeptide of collagen III (PIIINP) have been correlated with abdominal aneurysm progression [84]. PIIINP has also received attention as a marker of atherosclerosis [85]. Thus, it is likely that a proteomics approach targeting the ECM will reveal new biomarker candidates with vascular specificity. ECM biomarkers of clinical interest are summarized in Table 2.

##### *ECM proteomics in drug discovery*

Despite the number of diseases involving the ECM, there are currently few drugs that specifically target ECM components. The most prominent examples of such drugs to date are those that inhibit integrins, such as abciximab (to treat thrombosis) and natalizumab (to treat multiple sclerosis and Crohn's disease) [86]. However, there are numerous examples of other drug classes that indirectly influence the ECM in a favourable manner. For instance, it has been postulated that angiotensin II antagonists also act on the ECM by inhibiting TGF $\beta$  [87]. Furthermore, in patients with Marfan's syndrome, these drugs were found to slow the rate of progression of aortic-root dilatation. Unfortunately, these concomitant effects on the ECM are largely non-specific. Despite successful precedents, it has been noted that ECM proteins are mainly overlooked in drug discovery efforts [4].

#### Conclusions

During the progression of many vascular disorders, the continuous pathological remodelling of the ECM contributes to the manifestation of the disease; for instance, the transition of a stable to a vulnerable lesion in atherosclerosis [83], the degradation and subsequent wall thinning in abdominal aortic aneurysm [48] and neointimal hyperplasia in vein graft disease [88] and varicose veins [89]. The increasing performance of proteomic platforms and the ability to provide large

**Table 2** Extracellular matrix biomarkers in cardiovascular disease (CVD)

Biomarker	Tissue	Clinical context	Main findings	Reference
Biglycan	Coronary artery	Atherosclerosis	Atherosclerotic segments have enriched deposits of biglycan	[94]
Decorin	Coronary artery	Atherosclerosis	Accumulation in intima of early atherosclerotic lesions	[95]
Podocan	Coronary artery	Restenosis	Reduced in restenotic coronary lesions	[96]
Fibromodulin	Coronary artery	Atherosclerosis	High expression associated with symptomatic plaques	[97]
MMP-1	Serum	Atherosclerosis	Serum levels associated with plaque burden	[98]
MMP-9	Plasma	CVD	Plasma concentration predictor of cardiovascular mortality	[99]
MMP-10	Serum	PAD	Increased levels associated with clinical events	[100]
MMP-12	Plasma	Atherosclerosis, CAD	Associated with severe atherosclerosis and increased incidence of coronary events	[101]
TIMP-1	Plasma	CVD	Predictive of all-cause death, MI and cardiac mortality	[102]
ADAMTS-1	Aorta and coronary artery	Atherosclerosis	Upregulated in the intima when plaque is present	[43]
Cathepsin G	Plasma	Atherosclerosis	Reduced in patients with atherosclerosis	[103]
Cathepsin K	Plasma	CAD	Elevated plasma levels in patients with CAD	[104]
Collagen III	Serum	Acute MI	High levels of collagen III fragments predict mortality	[105]
	Serum	CAD	Collagen III fragments predictive for atherosclerosis	[85]
Collagen IV	Coronary artery	Atherosclerosis	Aldehyde modifications in collagen IV increase risk of clinical events	[106]
Osteopontin	Carotid artery	Atherosclerosis	Predictive of vascular complications	[82]
Periostin	Cardiac valve	Atherosclerotic VHD	Upregulated in patients with atherosclerotic VHD	[107]
Versican	Plasma	Atherosclerosis	Degradation fragments elevated in patients with atherosclerotic diseases	[108]
Fibronectin	Abdominal aorta	Atherosclerosis	Enriched in atherosclerotic plaques	[109]
Elastin	Carotid artery	Atherosclerosis	Elevated levels of elastin fragments associated with symptomatic carotid stenosis	[110]
Tenascin-C	n/a	Atherosclerosis	SNP associated with atherosclerosis and CAD	[111]
Matrix Gla protein	n/a	Atherosclerosis	SNP influences calcification and is associated with increased risk of MI	[112]
Galectin-3	Plasma	CAD	Increased levels are strong predictor of cardiovascular death	[113]

CAD, coronary artery disease; CVD, cardiovascular disease; MI, myocardial infarction; PAD, peripheral artery disease; SNP, single nucleotide polymorphism; VHD, valvular heart disease.

proteomic datasets, coupled with system biology approaches, will ultimately facilitate the identification of novel 'druggable' targets for and biomarkers of CVD.

#### Conflict of interest statement

None.

#### Disclosures

ML has been awarded a British Heart Foundation (BHF) PhD studentship. MM is a Senior Fellow of the BHF (FS/13/2/29892) and member of the network on 'MicroRNA-based Therapeutic Strategies in Vascular Disease' funded by the Foundation Leducq (MIRVAD; 13 CVD 02) and an excellence

initiative [(Competence Centers for Excellent Technologies (COMET)) of the Austrian Research Promotion Agency FFG: 'Research Center of Excellence in Vascular Ageing – Tyrol, VASCage' (K-Project number 843536). The research was funded/supported by the National Institute of Health Research (NIHR) Biomedical Research Centre based at Guy's and St Thomas' NHS Foundation Trust and King's College London in partnership with King's College Hospital, Diabetes UK (12/0004530) and Heart Research UK (RG2630/13/15).

## References

- Didangelos A, Simper D, Monaco C, Mayr M. Proteomics of acute coronary syndromes. *Curr Atheroscler Rep* 2009; **11**: 188–95.
- Hynes RO, Naba A. Overview of the matrisome – an inventory of extracellular matrix constituents and functions. *Cold Spring Harb Perspect Biol* 2012; **4**: a004903. doi: 10.1101/cshperspect.a004903.
- Mouw JK, Ou G, Weaver VM. Extracellular matrix assembly: a multiscale deconstruction. *Nat Rev Mol Cell Biol* 2014; **15**: 771–85.
- Jarvelainen H, Sainio A, Koulu M, Wight TN, Penttinen R. Extracellular matrix molecules: potential targets in pharmacotherapy. *Pharmacol Rev* 2009; **61**: 198–223.
- Dietz HC, Cutting GR, Pyeritz RE *et al.* Marfan syndrome caused by a recurrent de novo missense mutation in the fibrillin gene. *Nature* 1991; **352**: 337–9.
- Jeremy JY, Gadsdon P, Shukla N *et al.* On the biology of saphenous vein grafts fitted with external synthetic sheaths and stents. *Biomaterials* 2007; **28**: 895–908.
- Pfisterer L, Konig G, Hecker M, Korff T. Pathogenesis of varicose veins – lessons from biomechanics. *Vasa* 2014; **43**: 88–99.
- Goldin A, Beckman JA, Schmidt AM, Creager MA. Advanced glycation end products: sparking the development of diabetic vascular injury. *Circulation* 2006; **114**: 597–605.
- Gibbons GH, Dzau VJ. The emerging concept of vascular remodeling. *N Engl J Med* 1994; **330**: 1431–8.
- Moiseeva EP. Adhesion receptors of vascular smooth muscle cells and their functions. *Cardiovasc Res* 2001; **52**: 372–86.
- Kalluri R. Basement membranes: structure, assembly and role in tumour angiogenesis. *Nat Rev Cancer* 2003; **3**: 422–33.
- Iozzo RV. Basement membrane proteoglycans: from cellar to ceiling. *Nat Rev Mol Cell Biol* 2005; **6**: 646–56.
- Mongiat M, Sweeney SM, San Antonio JD, Fu J, Iozzo RV. Endorepellin, a novel inhibitor of angiogenesis derived from the C terminus of perlecan. *J Biol Chem* 2003; **278**: 4238–49.
- Bonnans C, Chou J, Werb Z. Remodelling the extracellular matrix in development and disease. *Nat Rev Mol Cell Biol* 2014; **15**: 786–801.
- Newby AC. Matrix metalloproteinases regulate migration, proliferation, and death of vascular smooth muscle cells by degrading matrix and non-matrix substrates. *Cardiovasc Res* 2006; **69**: 614–24.
- Wagenseil JE, Mecham RP. Vascular extracellular matrix and arterial mechanics. *Physiol Rev* 2009; **89**: 957–89.
- Brodsky B, Persikov AV. Molecular structure of the collagen triple helix. *Adv Protein Chem* 2005; **70**: 301–39.
- Didangelos A, Yin X, Mandal K *et al.* Proteomics characterization of extracellular space components in the human aorta. *Mol Cell Proteomics* 2010; **9**: 2048–62.
- Kadler KE, Baldock C, Bella J, Boot-Handford RP. Collagens at a glance. *J Cell Sci* 2007; **120**: 1955–8.
- Belz GG. Elastic properties and Windkessel function of the human aorta. *Cardiovasc Drugs Ther* 1995; **9**: 73–83.
- Varki ALJ. *Essentials of Glycobiology*. New York, USA: Cold Spring Harbor Laboratory Press, 2009.
- Herring GM. Studies on the protein-bound chondroitin sulphate of bovine cortical bone. *Biochem J* 1968; **107**: 41–9.
- Iozzo RV, Schaefer L. Proteoglycan form and function: a comprehensive nomenclature of proteoglycans. *Matrix Biol* 2015; **42**: 11–55.
- Wight TN, Merrilees MJ. Proteoglycans in atherosclerosis and restenosis: key roles for versican. *Circ Res* 2004; **94**: 1158–67.
- Wight TN. Versican: a versatile extracellular matrix proteoglycan in cell biology. *Curr Opin Cell Biol* 2002; **14**: 617–23.
- Cattaruzza S, Schiappacassi M, Kimata K, Colombatti A, Ferris R. The globular domains of PGM/versican modulate the proliferation-apoptosis equilibrium and invasive capabilities of tumor cells. *FASEB J* 2004; **18**: 779–81.
- Hocking AM, Shinomura T, McQuillan DJ. Leucine-rich repeat glycoproteins of the extracellular matrix. *Matrix Biol* 1998; **17**: 1–19.
- Reinboth B, Hanssen E, Cleary EG, Gibson MA. Molecular interactions of biglycan and decorin with elastic fiber components: biglycan forms a ternary complex with tropoelastin and microfibril-associated glycoprotein 1. *J Biol Chem* 2002; **277**: 3950–7.
- Merline R, Schaefer RM, Schaefer L. The matricellular functions of small leucine-rich proteoglycans (SLRPs). *J Cell Commun Signal* 2009; **3**: 323–35.
- Iozzo RV. The biology of the small leucine-rich proteoglycans. Functional network of interactive proteins. *J Biol Chem* 1999; **274**: 18843–6.
- Ameye L, Young MF. Mice deficient in small leucine-rich proteoglycans: novel in vivo models for osteoporosis, osteoarthritis, Ehlers-Danlos syndrome, muscular dystrophy, and corneal diseases. *Glycobiology* 2002; **12**: 107R–16R.
- Kivirikko KI, Myllyharju J. Prolyl 4-hydroxylases and their protein disulfide isomerase subunit. *Matrix Biol* 1998; **16**: 357–68.
- Kivirikko KI, Helaakoski T, Tasanen K *et al.* Molecular biology of prolyl 4-hydroxylase. *Ann N Y Acad Sci* 1990; **580**: 132–42.
- Pokidysheva E, Boudko S, Vranka J *et al.* Biological role of prolyl 3-hydroxylation in type IV collagen. *Proc Natl Acad Sci* 2014; **111**: 161–6.
- Bause E. Structural requirements of N-glycosylation of proteins. Studies with proline peptides as conformational probes. *Biochem J* 1983; **209**: 331–6.
- Lam PV, Goldman R, Karagiannis K *et al.* Structure-based comparative analysis and prediction of N-linked glycosylation

- sites in evolutionarily distant eukaryotes. *Genomics Proteomics Bioinformatics* 2013; **11**: 96–104.
- 37 Galis ZS, Khatri JJ. Matrix metalloproteinases in vascular remodeling and atherogenesis: the good, the bad, and the ugly. *Circ Res* 2002; **90**: 251–62.
- 38 Malemud CJ. Matrix metalloproteinases (MMPs) in health and disease: an overview. *Front Biosci* 2006; **11**: 1696–701.
- 39 Roy R, Yang J, Moses MA. Matrix metalloproteinases as novel biomarkers and potential therapeutic targets in human cancer. *J Clin Oncol* 2009; **27**: 5287–97.
- 40 Somerville RP, Longpre JM, Apel ED *et al.* ADAMTS7B, the full-length product of the ADAMTS7 gene, is a chondroitin sulfate proteoglycan containing a mucin domain. *J Biol Chem* 2004; **279**: 35159–75.
- 41 Majerus EM, Zheng X, Tuley EA, Sadler JE. Cleavage of the ADAMTS13 propeptide is not required for protease activity. *J Biol Chem* 2003; **278**: 46643–8.
- 42 Porter S, Clark Ian M, Kevorkian L, Edwards Dylan R. The ADAMTS metalloproteinases. *Biochem J* 2005; **386**: 15–27.
- 43 Jonsson-Rylander AC, Nilsson T, Fritsche-Danielson R *et al.* Role of ADAMTS-1 in atherosclerosis: remodeling of carotid artery, immunohistochemistry, and proteolysis of versican. *Arterioscler Thromb Vasc Biol* 2005; **25**: 180–5.
- 44 Didangelos A, Mayr U, Monaco C, Mayr M. Novel role of ADAMTS-5 protein in proteoglycan turnover and lipoprotein retention in atherosclerosis. *J Biol Chem* 2012; **287**: 19341–5.
- 45 Kirsch D, Dienes HP, Kuchle R *et al.* Changes in the extracellular matrix of the vein wall – the cause of primary varicosis? *Vasa* 2000; **29**: 173–7.
- 46 Talusan P, Bedri S, Yang S *et al.* Analysis of intimal proteoglycans in atherosclerosis-prone and atherosclerosis-resistant human arteries by mass spectrometry. *Mol Cell Proteomics* 2005; **4**: 1350–7.
- 47 Naba A, Clauser KR, Ding H *et al.* The extracellular matrix: tools and insights for the “omics” era. *Matrix Biol* 2015; doi: 10.1016/j.matbio.2015.06.003. [Epub ahead of print].
- 48 Didangelos A, Yin X, Mandal K *et al.* Extracellular matrix composition and remodeling in human abdominal aortic aneurysms: a proteomics approach. *Mol Cell Proteomics* 2011; **10**: M111.008128.
- 49 Lyck Hansen M, Beck HC, Irmukhamedov A *et al.* Proteome analysis of human arterial tissue discloses associations between the vascular content of small leucine-rich repeat proteoglycans and pulse wave velocity. *Arterioscler Thromb Vasc Biol* 2015; **35**: 1896–903.
- 50 Preil SA, Kristensen LP, Beck HC *et al.* Quantitative proteome analysis reveals increased content of basement membrane proteins in arteries from patients with type 2 diabetes mellitus and lower levels among metformin users. *Circ Cardiovasc Genet* 2015; **8**: 727–35.
- 51 Newby AC. Matrix metalloproteinase inhibition therapy for vascular diseases. *Vascul Pharmacol* 2012; **56**: 232–44.
- 52 Furman C, Luo Z, Walsh K *et al.* Systemic tissue inhibitor of metalloproteinase-1 gene delivery reduces neointimal hyperplasia in balloon-injured rat carotid artery. *FEBS Lett* 2002; **531**: 122–6.
- 53 Peterson JT. The importance of estimating the therapeutic index in the development of matrix metalloproteinase inhibitors. *Cardiovasc Res* 2006; **69**: 677–87.
- 54 Henney AM, Wakeley PR, Davies MJ *et al.* Localization of stromelysin gene expression in atherosclerotic plaques by in situ hybridization. *Proc Natl Acad Sci USA* 1991; **88**: 8154–8.
- 55 Lutun A, Lutgens E, Manderveld A *et al.* Loss of matrix metalloproteinase-9 or matrix metalloproteinase-12 protects apolipoprotein E-deficient mice against atherosclerotic media destruction but differentially affects plaque growth. *Circulation* 2004; **109**: 1408–14.
- 56 Johnson JL, George SJ, Newby AC, Jackson CL. Divergent effects of matrix metalloproteinases 3, 7, 9, and 12 on atherosclerotic plaque stability in mouse brachiocephalic arteries. *Proc Natl Acad Sci USA* 2005; **102**: 15575–80.
- 57 Stegemann C, Didangelos A, Barallobre-Barreiro J *et al.* Proteomic identification of matrix metalloproteinase substrates in the human vasculature. *Circ Cardiovasc Genet* 2013; **6**: 106–17.
- 58 Boja ES, Rodriguez H. Mass spectrometry-based targeted quantitative proteomics: achieving sensitive and reproducible detection of proteins. *Proteomics* 2012; **12**: 1093–110.
- 59 Picotti P, Aebersold R. Selected reaction monitoring-based proteomics: workflows, potential, pitfalls and future directions. *Nat Methods* 2012; **9**: 555–66.
- 60 Chen Y-T, Tuan L-P, Chen H-W *et al.* Quantitative analysis of prostate specific antigen isoforms using immunoprecipitation and stable isotope labeling mass spectrometry. *Anal Chem* 2015; **87**: 545–53.
- 61 Wang M, Turko IV. Mass spectrometry quantification revealed accumulation of C-terminal fragment of apolipoprotein E in the Alzheimer's frontal cortex. *PLoS One* 2013; **8**: e61498.
- 62 Palmisano G, Melo-Braga MN, Engholm-Keller K, Parker BL, Larsen MR. Chemical deamidation: a common pitfall in large-scale N-linked glycoproteomic mass spectrometry-based analyses. *J Proteome Res* 2012; **11**: 1949–57.
- 63 Küster B, Mann M. 18O-labeling of N-glycosylation sites to improve the identification of gel-separated glycoproteins using peptide mass mapping and database searching. *Anal Chem* 1999; **71**: 1431–40.
- 64 Yin X, Bern M, Xing Q *et al.* Glycoproteomic analysis of the secretome of human endothelial cells. *Mol Cell Proteomics* 2013; **12**: 956–78.
- 65 Kam RT, Poon TW. The potentials of glycomics in biomarker discovery. *Clin Proteomics* 2008; **4**: 67–79.
- 66 Shriver Z, Raguram S, Sasisekharan R. Glycomics: a pathway to a class of new and improved therapeutics. *Nat Rev Drug Discov* 2004; **3**: 863–73.
- 67 Aebersold R, Mann M. Mass spectrometry-based proteomics. *Nature* 2003; **422**: 198–207.
- 68 Dalpathado DS, Desaire H. Glycopeptide analysis by mass spectrometry. *Analyst* 2008; **133**: 731–8.
- 69 Parker BL, Palmisano G, Edwards AVG *et al.* Quantitative N-linked glycoproteomics of myocardial ischemia and reperfusion injury reveals early remodeling in the extracellular environment. *Mol Cell Proteomics* 2011; **10**: M110.006833.
- 70 Williams KJ, Tabas I. The response-to-retention hypothesis of early atherogenesis. *Arterioscler Thromb Vasc Biol* 1995; **15**: 551–61.
- 71 Ponticos M, Smith BD. Extracellular matrix synthesis in vascular disease: hypertension, and atherosclerosis. *J Biomed Res* 2014; **28**: 25–39.



- 72 Rekhter MD. Collagen synthesis in atherosclerosis: too much and not enough. *Cardiovasc Res* 1999; **41**: 376–84.
- 73 Geary RL, Wong JM, Rossini A, Schwartz SM, Adams LD. Expression profiling identifies 147 genes contributing to a unique primate neointimal smooth muscle cell phenotype. *Arterioscler Thromb Vasc Biol* 2002; **22**: 2010–6.
- 74 Stegemann C, Drozdov I, Shalhoub J *et al.* Comparative lipidomics profiling of human atherosclerotic plaques. *Circ Cardiovasc Genet* 2011; **4**: 232–42.
- 75 Stegemann C, Pechlaner R, Willeit P *et al.* Lipidomics profiling and risk of cardiovascular disease in the prospective population-based Bruneck study. *Circulation* 2014; **129**: 1821–31.
- 76 Jørgensen AB, Frikke-Schmidt R, Nordestgaard BG, Tybjaerg-Hansen A. Loss-of-function mutations in APOC3 and risk of ischemic vascular disease. *N Engl J Med* 2014; **371**: 32–41.
- 77 The TG and HDL Working Group of the Exome Sequencing Project NH, Lung, and Blood Institute. Loss-of-function mutations in APOC3, triglycerides, and coronary disease. *N Engl J Med* 2014; **371**: 22–31.
- 78 Varbo A, Benn M, Tybjaerg-Hansen A, Nordestgaard BG. Elevated remnant cholesterol causes both low-grade inflammation and ischemic heart disease, whereas elevated low-density lipoprotein cholesterol causes ischemic heart disease without inflammation. *Circulation* 2013; **128**: 1298–309.
- 79 Varbo A, Benn M, Nordestgaard BG. Remnant cholesterol as a cause of ischemic heart disease: evidence, definition, measurement, atherogenicity, high risk patients, and present and future treatment. *Pharmacol Ther* 2014; **141**: 358–67.
- 80 Hinterwirth H, Stegemann C, Mayr M. Lipidomics: quest for molecular lipid biomarkers in cardiovascular disease. *Circ Cardiovasc Genet* 2014; **7**: 941–54.
- 81 Naba A, Clauser KR, Hoersch S *et al.* The matrisome: in silico definition and in vivo characterization by proteomics of normal and tumor extracellular matrices. *Mol Cell Proteomics* 2012; **11**: M111.014647.
- 82 de Kleijn DP, Moll FL, Hellings WE *et al.* Local atherosclerotic plaques are a source of prognostic biomarkers for adverse cardiovascular events. *Arterioscler Thromb Vasc Biol* 2010; **30**: 612–9.
- 83 Didangelos A, Stegemann C, Mayr M. The -omics era: proteomics and lipidomics in vascular research. *Atherosclerosis* 2012; **221**: 12–7.
- 84 Hellenthal FAMVI, Buurman WA, Wodzig WKWH, Schurink GWH. Biomarkers of AAA progression. Part 1: extracellular matrix degeneration. *Nat Rev Cardiol* 2009; **6**: 464–74.
- 85 Bonnet J, Garderes PE, Aumailley M *et al.* Serum type III procollagen peptide levels in coronary artery disease (a marker of atherosclerosis). *Eur J Clin Invest* 1988; **18**: 18–21.
- 86 Goodman SL, Picard M. Integrins as therapeutic targets. *Trends Pharmacol Sci* 2012; **33**: 405–12.
- 87 Brooke BS, Habashi JP, Judge DP *et al.* Angiotensin II blockade and aortic-root dilation in Marfan's syndrome. *N Engl J Med* 2008; **358**: 2787–95.
- 88 Siow RCM, Churchman AT. Adventitial growth factor signalling and vascular remodelling: potential of perivascular gene transfer from the outside-in. *Cardiovasc Res* 2007; **75**: 659–68.
- 89 Ghaderian SMH, Khodaii Z. Tissue remodeling investigation in varicose veins. *Int J Mol Cell Med* 2012; **1**: 50–61.
- 90 de Castro Brás LE, Ramirez TA, DeLeon-Pennell KY *et al.* Texas 3-Step decellularization protocol: looking at the cardiac extracellular matrix. *J Proteomics* 2013; **86**: 43–52.
- 91 Brachvogel B, Zaucke F, Dave K *et al.* Comparative proteomic analysis of normal and collagen IX null mouse cartilage reveals altered extracellular matrix composition and novel components of the collagen IX interactome. *J Biol Chem* 2013; **288**: 13481–92.
- 92 Barallobre-Barreiro J, Didangelos A, Schoendube FA *et al.* Proteomics analysis of cardiac extracellular matrix remodeling in a porcine model of ischemia/reperfusion injury. *Circulation* 2012; **125**: 789–802.
- 93 Decaris ML, Gatmaitan M, FlorCruz S *et al.* Proteomic analysis of altered extracellular matrix turnover in bleomycin-induced pulmonary fibrosis. *Mol Cell Proteomics* 2014; **13**: 1741–52.
- 94 O'Brien KD, Olin KL, Alpers CE *et al.* Comparison of apolipoprotein and proteoglycan deposits in human coronary atherosclerotic plaques: colocalization of biglycan with apolipoproteins. *Circulation* 1998; **98**: 519–27.
- 95 Nakashima Y, Fujii H, Sumiyoshi S, Wight TN, Sueishi K. Early human atherosclerosis: accumulation of lipid and proteoglycans in intimal thickenings followed by macrophage infiltration. *Arterioscler Thromb Vasc Biol* 2007; **27**: 1159–65.
- 96 Hutter R, Huang L, Speidl WS *et al.* Novel small leucine-rich repeat protein podocan is a negative regulator of migration and proliferation of smooth muscle cells, modulates neointima formation, and is expressed in human atheroma. *Circulation* 2013; **128**: 2351–63.
- 97 Shami A, Tengryd C, Ascietto G *et al.* Expression of fibromodulin in carotid atherosclerotic plaques is associated with diabetes and cerebrovascular events. *Atherosclerosis* 2015; **241**: 701–8.
- 98 Lehrke M, Greif M, Broedl UC *et al.* MMP-1 serum levels predict coronary atherosclerosis in humans. *Cardiovasc Diabetol* 2009; **8**: 50.
- 99 Blankenberg S, Rupprecht HJ, Poirier O *et al.* Plasma concentrations and genetic variation of matrix metalloproteinase 9 and prognosis of patients with cardiovascular disease. *Circulation* 2003; **107**: 1579–85.
- 100 Martinez-Aguilar E, Gomez-Rodriguez V, Orbe J *et al.* Matrix metalloproteinase 10 is associated with disease severity and mortality in patients with peripheral arterial disease. *J Vasc Surg* 2015; **61**: 428–35.
- 101 Goncalves I, Bengtsson E, Colhoun HM *et al.* Elevated plasma levels of MMP-12 are associated with atherosclerotic burden and symptomatic cardiovascular disease in subjects with type 2 diabetes. *Arterioscler Thromb Vasc Biol* 2015; **35**: 1723–31.
- 102 Cavusoglu E, Ruwende C, Chopra V *et al.* Tissue inhibitor of metalloproteinase-1 (TIMP-1) is an independent predictor of all-cause mortality, cardiac mortality, and myocardial infarction. *Am Heart J* 2006; **151**: 1101.e1–8.
- 103 Wang J, Sjoberg S, Tang TT *et al.* Cathepsin G activity lowers plasma LDL and reduces atherosclerosis. *Biochim Biophys Acta* 2014; **1842**: 2174–83.



- 104 Cheng XW, Kikuchi R, Ishii H *et al.* Circulating cathepsin K as a potential novel biomarker of coronary artery disease. *Atherosclerosis* 2013; **228**: 211–6.
- 105 Poulsen SH, Host NB, Jensen SE, Egstrup K. Relationship between serum amino-terminal propeptide of type III procollagen and changes of left ventricular function after acute myocardial infarction. *Circulation* 2000; **101**: 1527–32.
- 106 Duner P, Goncalves I, Grufman H *et al.* Increased aldehyde-modification of collagen type IV in symptomatic plaques—a possible cause of endothelial dysfunction. *Atherosclerosis* 2015; **240**: 26–32.
- 107 Hakuno D, Kimura N, Yoshioka M *et al.* Periostin advances atherosclerotic and rheumatic cardiac valve degeneration by inducing angiogenesis and MMP production in humans and rodents. *J Clin Invest* 2010; **120**: 2292–306.
- 108 Barascuk N, Genovese F, Larsen L *et al.* A MMP derived versican neo-epitope is elevated in plasma from patients with atherosclerotic heart disease. *Int J Clin Exp Med* 2013; **6**: 174–84.
- 109 Matter CM, Schuler PK, Alessi P *et al.* Molecular imaging of atherosclerotic plaques using a human antibody against the extra-domain B of fibronectin. *Circ Res* 2004; **95**: 1225–33.
- 110 Petersen E, Wågberg F, Ängquist KA. Serum concentrations of elastin-derived peptides in patients with specific manifestations of atherosclerotic disease. *Eur J Vasc Endovasc Surg* 2002; **24**: 440–4.
- 111 Minear MA, Crosslin DR, Sutton BS *et al.* Polymorphic variants in tenascin-C (TNC) are associated with atherosclerosis and coronary artery disease. *Hum Genet* 2011; **129**: 641–54.
- 112 Cassidy-Bushrow AE, Bielak LF, Levin AM *et al.* Matrix gla protein gene polymorphism is associated with increased coronary artery calcification progression. *Arterioscler Thromb Vasc Biol* 2013; **33**: 645–51.
- 113 Maiolino G, Rossitto G, Pedon L *et al.* Galectin-3 predicts long-term cardiovascular death in high-risk patients with coronary artery disease. *Arterioscler Thromb Vasc Biol* 2015; **35**: 725–32.

*Correspondence:* Professor Manuel Mayr, King's British Heart Foundation Centre, King's College London, 125 Coldharbour Lane, London SE5 9NU, UK.  
(fax: +44(0)2078485998; e-mail: manuel.mayr@kcl.ac.uk). ■