

Published in final edited form as:

*Ecography (Cop.)*. 2016 October ; 39(10): 913–920. doi:10.1111/ecog.01694.

## Influence of tree shape and evolutionary time-scale on phylogenetic diversity metrics

### F. Mazel,

Univ. Grenoble Alpes, Laboratoire d'Écologie Alpine (LECA), F-38000 Grenoble, France. CNRS, Laboratoire d'Écologie Alpine (LECA), F-38000 Grenoble, France; flo.mazel@gmail.com

### T.J Davies,

Department of Biology, McGill University, 1205, Avenue Docteur Penfield, Montreal, Quebec, Canada. African Centre for DNA Barcoding, University of Johannesburg, APK Campus, PO Box 524, Auckland Park 2006, Johannesburg, South Africa; j.davies@mcgill.ca

### L. Gallien,

Swiss Federal Research Institute WSL, 8903 Birmensdorf, Switzerland; laure.gallien@gmail.com

### J. Renaud,

Univ. Grenoble Alpes, Laboratoire d'Écologie Alpine (LECA), F-38000 Grenoble, France. CNRS, Laboratoire d'Écologie Alpine (LECA), F-38000 Grenoble, France; julien.renaud.leca@gmail.com

### M. Groussin,

Department of Biological Engineering, Massachusetts Institute of Technology, Cambridge, MA, United States of America; mgroussi@mit.edu

### T. Münkemüller, and

Univ. Grenoble & CNRS Alpes, Laboratoire d'Écologie Alpine (LECA), F-38000 Grenoble, France; tamara.muenkemueller@ujf-grenoble.fr

### W. Thuiller

Univ. Grenoble Alpes, Laboratoire d'Écologie Alpine (LECA), F-38000 Grenoble, France. CNRS, Laboratoire d'Écologie Alpine (LECA), F-38000 Grenoble, France; wilfried.thuiller@ujf-grenoble.fr

## Abstract

During the last decades, describing, analysing and understanding the phylogenetic structure of species assemblages has been a central theme in both community ecology and macro-ecology. Among the wide variety of phylogenetic structure metrics, three have been predominant in the literature: Faith's phylogenetic diversity ( $PD_{\text{Faith}}$ ), which represents the sum of the branch lengths of the phylogenetic tree linking all species of a particular assemblage, the mean pairwise distance between all species in an assemblage (MPD) and the pairwise distance between the closest relatives in an assemblage (MNTD). Comparisons between studies using one or several of these metrics are difficult because there has been no comprehensive evaluation of the phylogenetic properties each metric captures. In particular it is unknown how  $PD_{\text{Faith}}$  relates to MPD and MNTD. Consequently, it is possible that apparently opposing patterns in different studies might simply reflect differences in metric properties. Here, we aim to fill this gap by comparing these metrics using simulations and empirical data. We first used simulation experiments to test the influence of community structure and size on the mismatch between metrics whilst varying the

shape and size of the phylogenetic tree of the species pool. Second we investigated the mismatch between metrics for two empirical datasets (gut microbes and global carnivoran assemblages). We show that MNTD and  $PD_{\text{Faith}}$  provide similar information on phylogenetic structure, and respond similarly to variation in species richness and assemblage structure. However, MPD demonstrate a very different behaviour, and is highly sensitive to deep branching structure. We suggest that by combining complementary metrics that are sensitive to processes operating at different phylogenetic depths (i.e. MPD and MNTD or  $PD_{\text{Faith}}$ ) we can obtain a better understanding of assemblage structure.

---

## Introduction

During the last decades, the phylogenetic structure of species assemblages has received much attention in community ecology and macro-ecology since it holds promise to help unravel the drivers of species coexistence at various spatial scales (Webb et al. 2002, Lozupone and Knight 2005, Mouquet et al. 2012, Warren et al. 2014).

Community ecologists have considered phylogenetic distances between species as a substitute for niche differences and have used phylogenetic structure to disentangle the relative effects of biotic and abiotic environments in shaping present day species distributions (Webb et al. 2002, Mouquet et al. 2012). Coexistence theory predicts that species sharing the same niches compete more strongly than dissimilar species (HilleRisLambers et al. 2012), it is therefore commonly expected that competition-driven coexistence will generate patterns of phylogenetic ‘over-dispersion’ (i.e. distantly related species with less niche overlap co-occur). Conversely, phylogenetic ‘clustering’ is thought to indicate the coexistence of closely related species because of shared environmental niches (Webb et al. 2002, Mouquet et al. 2012, O’Dwyer et al. 2012). Although the link between pattern and process has been a matter of some debate (for example, see Mayfield & Levine 2010), non-random phylogenetic community structure appears common. Recently, macro-ecologists have also used the phylogenetic structure of assemblages to understand the effects of historical processes on large scale biodiversity distribution (Davies et al. 2011, Kissling et al. 2012). For example, explosive radiation of species within a given area may result in the co-occurrence of closely related species resulting in phylogenetic clustering, while multiple allopatric speciation events may lead to phylogenetic over-dispersion (Warren et al. 2014).

Among the plethora of phylogenetic structure metrics that have been developed and used in both fields (Pavoine and Bonsall 2011), the three most commonly used are Faith’s phylogenetic diversity (named  $PD_{\text{Faith}}$  hereafter), which represents the sum of the branch lengths of the phylogenetic tree linking all species of a particular assemblage (Faith 1992), the mean pairwise distance between all species in an assemblage (MPD) and the pairwise distance between the closest relatives in an assemblage (MNTD) (Webb et al. 2002). As  $PD_{\text{Faith}}$  correlates closely and positively with species richness (SR, e.g. Tucker and Cadotte 2013), the use of a null model that keeps SR constant while randomizing phylogenetic relationships allows comparisons of assemblages with different SR. Using this null model, standard effect size (SES, Eq. 1) and relative position of observed values with respect to the null distribution can be calculated. SES can be defined as:

$$\text{ses.Metric} = \frac{\text{Metric}_{\text{obs}} - \text{mean}(\text{Metric}_{\text{null}})}{\text{sd}(\text{Metric}_{\text{null}})} \quad (\text{Eq. 1})$$

where  $\text{Metric}_{\text{obs}}$  is the observed metric in a given assemblage, and  $\text{Metric}_{\text{null}}$  is the same metric but calculated  $n$  times with  $n$  randomised assemblages. The relative position of the observed value with respect to the null distribution is computed as the proportion of null values that are lower than the observed values. It represents the probability to draw the observed value from the null distribution and thus corresponds to a  $p$ -value ( $H_{\text{null}}$  being the null model). For normally distributed data, significance at  $p$ -value  $< 0.05$  is equivalent to a standard effect size  $> 1.96$  (or  $< -1.96$ ).

The standard effect size (and associated  $p$ -value) of MPD (ses.MPD hereafter) and MNTD (ses.MNTD hereafter) are commonly used in the community phylogenetic literature (also referred to as NRI and NTI, respectively, Webb et al. 2002), and can be directly compared to the standard effect size of  $\text{PD}_{\text{Faith}}$  (ses. $\text{PD}_{\text{Faith}}$  hereafter). All three standardized metrics quantify the relative excess (overdispersion) or deficit (clustering) in phylogenetic diversity for a given species set relatively to the species pool (whose phylogenetic relationships between species are depicted by the “regional tree”). As a consequence, a negative standardized metric reflects a relative clustering of species while a positive standardized metric reflects a relative overdispersion of species.

MPD and MNTD highlight phylogenetic structure of assemblages at different evolutionary depths since MPD is more strongly influenced by the ‘basal’ structure of the phylogenetic tree while MNTD describes the more ‘terminal’ structure of the phylogenetic tree (Webb et al. 2002). This is an important aspect since different processes may act at different evolutionary time scales. Some processes may produce basal clustering, while others may create terminal over-dispersion, generating “clusters of overdispersion” (see *e.g.* blue assemblages in Fig. 1). For example, a cluster of overdispersion could be due to environmental filtering at large evolutionary time scales and competition between close relatives at fine evolutionary time scale (Hardy and Senterre 2007). Conversely, “overdispersion of clusters” would correspond to basal overdispersion and terminal clustering (see *e.g.* pink assemblages in Fig. 1). Consequently, owing to their property to detect phylogenetic structure on restricted phylogenetic scales, existing metrics may be limited in their ability to capture complex structural patterns and may suffer from decreased power (i.e. inflated false negative) in case clustering and overdispersion occur in concert at different phylogenetic scales. In other words, if clustering and overdispersion occur at different phylogenetic scales, using a metric that averages the information over the entire tree may mask these two opposing patterns.

While differences in the performance of ses.MPD and ses.MNTD are widely recognised, ses. $\text{PD}_{\text{Faith}}$  has mostly been considered independently or as interchangeable with ses.MPD and ses.MNTD (see Table 1 and Supplementary Material 1 for examples and their detailed justifications, respectively). To our knowledge, this assumed equivalence has never been validated empirically. Comparisons between studies using either jointly MPD and MNTD or

$PD_{Faith}$  (either SES of metrics and/or corresponding p-values) are thus difficult to interpret, and it is possible that apparently opposing patterns of phylogenetic structure simply reflect differences in metric properties. While a number of macro/micro ecological studies have explored patterns of phylogenetic metrics, making unique and important contributions to the literature (e.g. Morlon et al. 2011, Fritz and Rahbek 2012, O’Dwyer et al. 2012, see Table 1), for the most part they have focussed only on  $PD_{Faith}$ , limiting our understanding of the phylogenetic scale at which processes structuring species assemblages operate. In contrast, community phylogenetic studies frequently measure both MPD and MNTD, but rarely consider  $PD_{Faith}$ . Choice of metric, however, is often poorly justified, and we currently lack a comparative analysis comparing the performance of these three widely used indices.

Here, we perform the first comprehensive comparative analysis of MPD, MNTD and  $PD_{Faith}$  using both simulations and empirical data. We first used simulation experiments to understand the relative effect of (1) the size and the shape of the regional tree, and, (2) the richness and structure of the observed community, on the mismatches between the three metrics. Second, we evaluated metric behaviour on real world datasets for gut microbes and terrestrial mammals. Overall, we show that MNTD and  $PD_{Faith}$  are both ‘terminal’ metrics, and thus could be used interchangeably, while MPD, a ‘basal’ metric sensitive to deeper branching structure, captures a distinct, but complementary dimension of phylogenetic structure. Their combined use allow for a better understanding of assemblage structure, especially when different processes operates at different phylogenetic depths simultaneously, while the use of only one metric could lead to incomplete interpretations and biased conclusions.

## Material and Methods

### Simulation experiments

In a first set of simulations, we illustrated the sensitivity of  $PD_{Faith}$ , MPD and MNTD to tree shape and phylogenetic structure using a straightforward toy example. We generated four balanced phylogenetic trees with different basal vs. terminal branch lengths (see Fig. 1 column 1). For each tree, we compared the response of the three metrics to four extreme assemblage structures: phylogenetic clustering and overdispersion, clustering of overdispersion and overdispersion of clusters (Fig. 1)

In a second set of simulations, we tested the influence of regional pool sizes, regional tree shapes and species richness of the assemblage on the three metrics. We first created four regional species pools of different sizes ( $n = 20, 40, 100$  and  $200$  species). For each regional species pool, we simulated 100 regional phylogenetic trees of size  $n$  using a pure birth model (function *sim.bdtree* of the *geiger* R package; Harmon et al. 2008) for which we reported two tree shape statistics: imbalance (Colless 1982) and Gamma values, quantifying the “tippiness” vs. “stemminess” of the tree, respectively (Pybus and Harvey 2000). For each of these 400 regional pools (100 regional trees \* 4 tree sizes), we constructed local species assemblages by randomly drawing without replacement  $m$  species from the regional pool ( $m$  thus equals the species richness of the corresponding community). We repeated this procedure varying  $m$  from 2 to  $n-1$  and randomly drawing five assemblages for a given species richness  $m$ . To test the influence of the size of the species assemblage on our three

metrics, we then grouped assemblages according to their SR and reported the mismatches between metrics for each group independently. For example, with a regional species pool of 200 species, we created 10 sets of species assemblages with different ranges of SR (from 10 to 30 species for the first set, 30 to 50 for the second, and so on until 170 to 190 species for the last set). For each tree and each set of assemblages we calculated the strength of the relationship between  $\text{ses.PD}_{\text{Faith}}$  and  $\text{ses.MPD}$  or  $\text{ses.MNTD}$  as the  $R^2$  of the linear regression between them (we also checked for more complex models, see Results).

### Real world empirical data

To compare the three metrics in realistic examples, we compiled two empirical datasets that differed in spatial scale and assemblage structure: mammal gut microbial assemblages and global terrestrial carnivore assemblages.

**Mammal gut microbial assemblages**—Species assemblages were here defined as the set of microbial Operational Taxonomic Units (OTUs, a taxonomic concept based on DNA sequence similarities commonly used for microbes) living in the gut of different mammalian species. We used the 16S rRNA genes dataset from Muegge et al. (2011) to derive occurrences of 2,820 OTUs (defined at 97% of similarity to create species-like entities) in the gut of 33 mammalian species (i.e. 33 bacterial species assemblages from a regional pool of  $n = 2,820$  OTUs) and to reconstruct a regional phylogenetic tree (see Supp. Mat.2. for details).

**Global carnivore assemblages**—We used the distribution maps provided by the Mammal Red List Assessment (<http://www.iucnredlist.org/>) to derive the occurrence of 241 terrestrial carnivores (regional species pool). We then defined a species assemblage as all carnivores co-occurring in a given 50x50km grid cell. Analyses were thus carried out over 52,346 assemblages around the world. For phylogenetic relationships, we used the recent update of the carnivoran phylogeny proposed by Nyakatura and Bininda-Emonds (2012) as the regional tree.

### Metric calculation

For both simulated and empirical datasets, we computed the observed  $\text{PD}_{\text{Faith}}$ , MPD and MNTD for each assemblage using the function *pd*, *mpd* and *mntd* in the R package *picante* (Kembel et al. 2010). We then randomly shuffled the tips of the regional phylogeny and calculated  $\text{PD}_{\text{Faith}}$ , MPD and MNTD for the random assemblages, and repeated this procedure 100 times to obtain a null distribution of values for each assemblage and for each metric. We calculated standard effect sizes using eq.1, as well as the relative position of the observed index in the null distribution to derive *p-values* (e.g. Fig 1). All analysis were performed using R (R Development Core Team 2014).

## Results & Discussion

In our first set of simulations (see Material & Methods and Figure 1), we used extreme assemblage structures to illustrate the different phylogenetic signal captured by  $\text{PD}_{\text{Faith}}$ , MPD and MNTD, respectively. All three metrics produce very similar predictions in the case

of simple patterns where a single process structures species' assemblages (Fig. 1, clustered patterns in orange and over-dispersed patterns in green). We also explored more complex phylogenetic structures such as clusters of overdispersion or overdispersion of clusters. These patterns might arise when different processes acting at different depth of the tree jointly influence assemblage phylogenetic structure. In these more complex cases, the different metrics suggested different phylogenetic structures, with these differences being further affected by phylogenetic tree shape (Fig. 1).

In the case of clusters of overdispersion (blue line in Fig. 1) on a very 'tippy' tree (i.e. one with relatively short internal to tip branch lengths; tree A in Fig. 1) the relative rank of observed MPD versus null MPD suggests clustering while  $PD_{Faith}$  (and even more MNTD) tends towards over-dispersion (see Fig. 1). This difference can be explained by the sensitivity of MPD to deep branching structure in the tree, which are counted multiple times when computing pairwise distance between all species in the assemblage (Webb et al. 2002). Thus, MPD tends to emphasise the basal clustering rather than the overdispersion within the cluster. In contrast,  $PD_{Faith}$  and MNTD are less influenced by internal branches (they are completely ignored by MNTD and counted only once for  $PD_{Faith}$ ), and therefore tend to be more sensitive to patterns occurring at the tips of the tree. When keeping the same community structure (a cluster of overdispersion, blue curve) but switching to a "stemmy" tree (i.e. one with relatively long internal to tip branch lengths; tree D in Fig. 1), MPD still suggests clustering and MNTD over-dispersion but  $PD_{Faith}$  shifts towards clustering. In this case only,  $PD_{Faith}$  is closer to MPD than to MNTD because, even though  $PD_{Faith}$  counts internal branches only once, in our simple simulation they have a profound effect because they are disproportionately (and perhaps unrealistically) long compared to tip lengths. When considering overdispersion of clusters (red curve) on the same stemmy tree,  $PD_{Faith}$  and MNTD were more sensitive to the signal of clustering, whereas MPD was more sensitive to the signal for overdispersion. This simple example illustrates that different metrics can identify apparently contrasting patterns in the same dataset, and that changes in tree structures can alter metric behaviour, and thus the inferences we might draw from them. Overall,  $PD_{Faith}$  and MNTD tend to identify similar structure (although not always), but are decoupled from MPD.

Our second set of simulations aimed at investigating whether the observed mismatch between  $PD_{Faith}$  and MPD was still apparent with a less-extreme range of community structures, but more realistic regional tree shapes and richer species assemblages. We found that  $ses.PD_{Faith}$  and  $ses.MPD$  were still largely decoupled while  $ses.PD_{Faith}$  and  $ses.MNTD$  showed congruent results (Fig 2 and Supp. Mat. 3-4). While regional phylogenetic tree shape and species pool size did not influence the discrepancies between  $ses.PD_{Faith}$  and  $ses.MPD$  (Supp. Mat. 5-6) correlation strength between metrics decreased with increasing species richness (mean SR) of assemblages (Fig 2 and 3-4). The richer the community, the more complex they are, and the more divergent are the metrics. Conversely, species poor communities likely have less complex structures that are easily detected by all three metrics.

The analyses of empirical data match to the results from the simulations. Phylogenetic pattern of both carnivore diversity and gut microbiomes revealed a clear mismatch between  $ses.PD_{Faith}$  and  $ses.MPD$  ( $R^2 = 0.36$  and  $0.19$ , for carnivores and microbes respectively, Figs

3-4), and greater congruence between ses.PD and ses.MNTD ( $R^2 = 0.59$  and  $0.96$ , for carnivores and microbes respectively, Figs 3-4). These results were almost identical when testing for linear or non-linear relationships between the metrics (see Supp. Mat. 7-8). The clear mismatch between indices further reveals complex structures that cannot be summarized by a single number (i.e. a single metric).

Comparing phylogenetic structure using metrics sensitive to process operating at different evolutionary scales sheds new light on the distribution of diversity. Indeed, for carnivores, the differences between metrics were strongly spatially structured (Fig. 4). In some parts of South America, both ses.PD<sub>Faith</sub> and ses.MNTD suggested phylogenetic clustering which were not evident from patterns of ses.MPD. Recent radiations of particular clades within the neotropics following the Great American Biotic Interchange (Webb 2006, Woodburne 2010) - for example, the ocelot genus *leopardus* (Johnson et al. 2006) - likely results in the co-occurrence of closely related species (Pedersen et al. 2014) at the continental scale. Niche partitioning via fine-scale habitat preferences may then have allowed these close relative species to co-occur at the scale of our analysis (Araújo and Rozenfeld 2014), leading to 'terminal' phylogenetic clustering (as detected by ses.PD<sub>Faith</sub> or ses.MNTD). At the same time, because South American carnivore assemblages also contain species from the two major clades of carnivores (i.e. dog- and cat-like clades: caniformia and feliformia, respectively), which are evolutionarily distinct from each other, but contain approximately equal numbers of species (see Pedersen et al. 2014, and Supp. Mat. 9), regional assemblages tend to show random phylogenetic patterns (as indicated by ses.MPD scores).

In contrast to patterns in South America, the Congo basin and some parts of Eurasia and North America show significant 'basal' clustering (as indicated by a significant negative ses.MPD values), but little structure towards the tips (as suggested by non-significant patterns of ses.PD<sub>Faith</sub> and ses.MNTD). This pattern may reflect the very unbalanced distribution of caniformia and feliformia in these regions (see Sup. Mat. 9) suggested to be the outcome of the interrelation between large-scale competition and historical biogeography (Pedersen et al. 2014). In Eurasia and North America, caniformia are over-represented, while feliformia dominate in the Congo basin (Pedersen et al. 2014; see also Supp. Mat. 9). Thus, these regions show taxonomic dominance by a single subclade, which is apparent in the "basal" clustering pattern, while there is little regional phylogenetic structure within clades. Taken together these findings demonstrate that one single phylogenetic diversity metric is not able to fully describe the complex structure of assemblage at macro-ecological scales where different processes may operate in different geographical regions and are evident at different phylogenetic depths. It is thus important to use multiple metrics that focus on different evolutionary scales, to be able to draw more precise and robust interpretations of phylogenetic diversity patterns (see e.g. Davies and Buckley 2011). Our results further stress the importance of using multiple metrics in the analysis of large datasets, as complex macro-ecological phylogenetic structures can emerge when studying relatively large groups (see O'Meara 2012, for a macro-evolutionary perspective on this subject).

Our findings at large spatial scale also extend to micro-biology, as we observe very similar trends for gut microbial assemblages (Fig. 4 and Sup. Mat. 9). For example, rodent

microbial gut assemblages appear clustered with  $\text{ses.PD}_{\text{Faith}}$  or  $\text{ses.MNTD}$ , but over-dispersed with  $\text{ses.MPD}$  (Fig. 4). Therefore, when using only metrics of  $\text{ses.PD}_{\text{Faith}}$  or  $\text{ses.MNTD}$ , one would have concluded that rodent microbial gut assemblages mainly consist of some closely related lineages. Whereas, when using only the  $\text{ses.MPD}$  metric, one would have concluded the opposite: microbial guts assemblages consist of distantly related lineages.

Again, these mismatches among metrics seem to be caused by an over-dispersion of clusters (see Supp. Mat. 10); the capybara (*Hydrochoerus hydrochaeris*) is an interesting example. Because it is a hindgut-fermenter herbivore, plant residuals reaching the fermentative part of the gut are complex to digest (e.g. cellulose and lignin, Ley et al. 2008) and a variety of plant secondary metabolites need to be broken-down (Dearing et al. 2000). Consequently, very different bacterial clades with different enzymatic equipment inhabit the gut of hindgut herbivores, possibly generating observed patterns of ‘basal’ overdispersion, i.e. co-occurrence of distantly related bacterial lineages. However, within these clades, host-specific processes structuring bacterial assemblages, such as mucus barriers, oxygen concentration and the innate and adaptive immune systems, may select for specific bacterial lineages (Salzman et al. 2010, Bevins & Salzman 2011, Hooper et al. 2012) favouring clustering of bacterial lineages. Thus, similarly to the case for global carnivoran communities discussed above, we show that a set of complementary metrics is needed to accurately describe the complex phylogenetic structure of micro-biomes.

We have classified phylogenetic metrics as either ‘terminal’ or ‘basal’, and we show that  $\text{ses.PD}_{\text{Faith}}$  is a ‘terminal’ metric that reflects the phylogenetic structure that is dominant near the tip of the tree. Recent reviews on metrics of phylogenetic beta diversity (Swenson 2011) and evolutionary isolation (i.e. phylogenetic “structure” at the species level, Redding et al. 2014) have followed a similar classification, placing emphasis on the phylogenetic depth at which patterns emerge. For example, Swenson (2011) classified Unifrac (Lozupone and Knight 2005) and PhyloSor (Bryant et al. 2008), the beta diversity equivalents of  $\text{PD}_{\text{Faith}}$ , as ‘terminal’ while  $\text{Dpw}$  (Webb et al. 2008), the beta diversity equivalent of  $\text{MPD}$ , as ‘basal’. Similarly, Redding et al. (2014) suggested that the fair proportion evolutionary distinctiveness metric (Isaac et al. 2007), the equivalent of  $\text{PD}_{\text{Faith}}$  at the species level, best captures ‘terminal’ isolation, while the ‘average phylogenetic distance’ (Ricotta 2007), the equivalent of  $\text{MPD}$  at the species level, is more closely linked to the ‘basal’ isolation of species.

Our analysis focused on the three most widely used metrics in (macro) ecology. There are, however, a large number of available metrics in the literature that have been proposed over the last decades (see Pavoine and Bonsall, 2011, for a synthetic review). It is beyond the scope of the paper to review and compare all available metrics, and additional studies are needed to extend our results to other metrics. For example, the Rao Quadratic Entropy (Rao QE, e.g. Pavoine and Bonsall 2011) is also widely used to describe phylogenetic structure (e.g. Devictor et al. 2010). Interestingly, when using presence/absence data, Rao QE has a non-linear relationship with  $\text{MPD}$  ( $\text{Rao QE} = (m-1)/m * \text{MPD}$ , with  $m$  being the species richness of the assemblage) so that the two metrics essentially carry the same information.



As a consequence, our results suggest that Rao QE would also represent a ‘basal’ metric of phylogenetic diversity, although this remains to be verified.

To better link macro-ecology, community ecology and microbial ecology, our analysis only focused on presence-absence data since abundance data is often not available at macro- and micro-ecological scales. However, we suggest that issues raised here for presence-absence data are likely to also occur when metrics are computed with abundance data. It is nonetheless not trivial to extend our simulation framework to incorporate abundances because additional assumptions have to be made on the relative abundances of species within the simulations, for which many possible scenarios exist. Additionally, since other metrics and recent developments have been proposed to specifically include abundances (e.g. Chao et al. 2010, Faith 2013), more comprehensive tests need to be conducted to evaluate the influence of species’ abundance on detected patterns.

## Conclusion

The use of  $PD_{Faith}$ , MPD and MNTD to characterize the phylogenetic structure of assemblages and regional species assemblages is common in the ecological literature. However, the choice of one metric over another seems more the product of historical contingencies rather than methodological properties. For example, studies linking phylogenetic diversity to area (Morlon et al. 2011), productivity (Cadotte et al. 2008) or functional diversity (Safi et al. 2011) have adopted  $PD_{Faith}$  as the natural extension of species richness (SR). This is an interesting avenue but explores only one single –recent– dimension of the phylogenetic structure of communities. Adding metrics that detect deeper phylogenetic structures (such as MPD or Rao QE) may in fact reveal different processes and thus complete our understanding of diversity distribution.

Here, we have demonstrated that the choice of metric can significantly impact inferences on dominant patterns and thus interpretation with regard to potential underlying processes. We show that MNTD and  $PD_{Faith}$  behave similarly, but that MPD is more sensitive to deeper branching structures. Our results extend the findings of Swenson (2011) for beta diversity metrics to alpha diversity metrics in distinguishing between relatively ‘basal’ or ‘terminal’ metrics. We call for the joint use of complementary metrics (i.e. MPD and  $PD_{Faith}$  or MNTD) to better understand patterns of species assemblage.

## Supplementary Material

Refer to Web version on PubMed Central for supplementary material.

## Acknowledgments

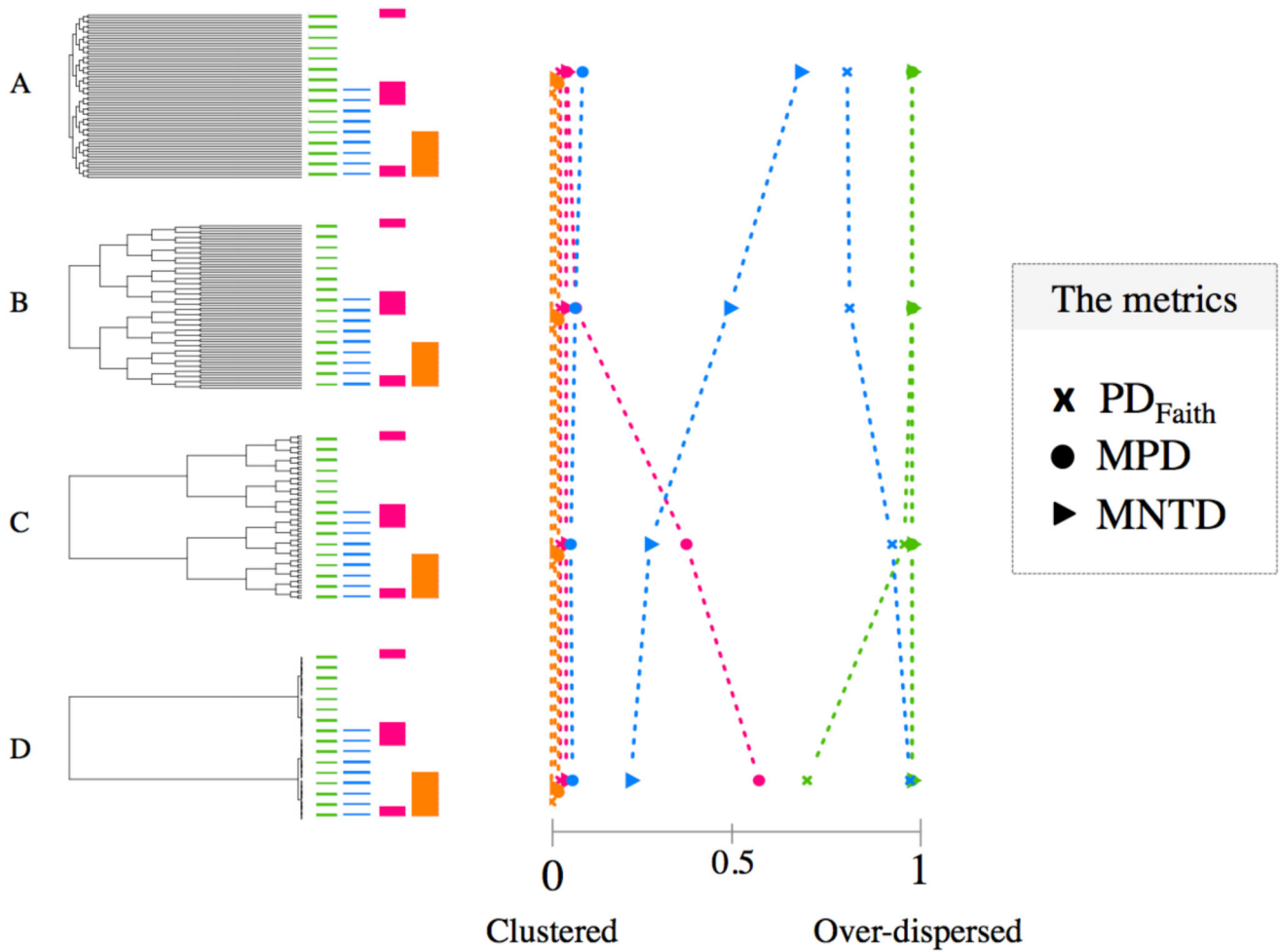
The research leading to these results had received funding from the European Research Council under the European Community’s Seven Framework Programme FP7/2007-2013 Grant Agreement no. 281422 (TEEMBIO). FM, TM and WT belong to the Laboratoire d’Écologie Alpine, which is part of Labex OSUG@2020 (ANR10 LABX56). All computations were performed using the CiGRI platform of the CIMENT infrastructure (<https://ciment.ujf-grenoble.fr>), which is supported by the Rhône-Alpes region (GRANT CPER07\_13 CIRA) and France-Grille (<http://www.france-grilles.fr>). TJD was supported by a team grant from the Fonds de recherche du Québec – Nature et technologies.

## References

- Araújo M, Rozenfeld A. The geographic scaling of biotic interactions. *Ecography (Cop.)*. 2014; 37:406–415.
- Bryant JA, et al. Microbes on mountainsides: contrasting elevational patterns of bacterial and plant diversity. *Proc Natl Acad Sci U S A*. 2008; 105:11505–11. [PubMed: 18695215]
- Cadotte MW, et al. Evolutionary history and the effect of biodiversity on plant productivity. *Proc Natl Acad Sci U S A*. 2008; 105:17012–7. [PubMed: 18971334]
- Chao A, et al. Phylogenetic diversity measures based on Hill numbers. *Philos Trans R Soc London Ser B*. 2010; 365:3599–3609. [PubMed: 20980309]
- Colless D. Review of phylogenetics: the theory and practice of phylogenetic systematics. *Syst Zool*. 1982; 31:100–104.
- Davies TJ, Buckley LB. Phylogenetic diversity as a window into the evolutionary and biogeographic histories of present-day richness gradients for mammals. *Philos Trans R Soc London Ser B*. 2011; 366:2414–2425. [PubMed: 21768156]
- Davies TJ, et al. The influence of past and present climate on the biogeography of modern mammal diversity. *Philos Trans R Soc London Ser B*. 2011; 366:2526–2535. [PubMed: 21807733]
- Dearing MD, et al. Diet breadth of mammalian herbivores: nutrient versus detoxification constraints. *Oecologia*. 2000; 123:397–405.
- Devictor V, et al. Spatial mismatch and congruence between taxonomic, phylogenetic and functional diversity: the need for integrative conservation strategies in a changing world. *Ecol Lett*. 2010; 13:1030–1040. [PubMed: 20545736]
- Faith DP. Conservation evaluation and phylogenetic diversity. *Biol Conserv*. 1992; 61:1–10.
- Faith DP. Biodiversity and evolutionary history: useful extensions of the PD phylogenetic diversity assessment framework. *Ann N Y Acad Sci*. 2013; 1289:69–89. [PubMed: 23773093]
- Fritz S, Rahbek C. Global patterns of amphibian phylogenetic diversity. *J Biogeogr*. 2012; 38:1373–1382.
- Hardy OJ, Senterre B. Characterizing the phylogenetic structure of communities by an additive partitioning of phylogenetic diversity. *J Ecol*. 2007; 95:493–506.
- Harmon LJ, et al. GEIGER: investigating evolutionary radiations. *Bioinformatics*. 2008; 24:129–31. [PubMed: 18006550]
- HilleRisLambers J, et al. Rethinking Community Assembly through the Lens of Coexistence Theory. *Annu Rev Ecol Evol Syst*. 2012; 43:227–248.
- Hooper LV, et al. Interactions between the microbiota and the immune system. *Science*. 2012; 336:1268–73. [PubMed: 22674334]
- Isaac NJB, et al. Mammals on the EDGE: conservation priorities based on threat and phylogeny. *PLoS One*. 2007; 2:e296. [PubMed: 17375184]
- Johnson W, et al. The late Miocene radiation of modern Felidae: a genetic assessment. *Science (80-)*. 2006; 311:73–77.
- Kembel SW, et al. Picante: R tools for integrating phylogenies and ecology. *Bioinformatics*. 2010; 26:1463–4. [PubMed: 20395285]
- Kissling W, et al. Cenozoic imprints on the phylogenetic structure of palm species assemblages worldwide. *Proc Natl Acad Sci U S A*. 2012; 109:7379–7384. [PubMed: 22529387]
- Ley RE, et al. Evolution of mammals and their gut microbes. *Science*. 2008; 320:1647–51. [PubMed: 18497261]
- Lozupone C, Knight R. UniFrac: a new phylogenetic method for comparing microbial communities. *Appl Environ Microbiol*. 2005; 71:8228–8235. [PubMed: 16332807]
- Morlon H, et al. Spatial patterns of phylogenetic diversity. *Ecol Lett*. 2011; 14:141–149. [PubMed: 21166972]
- Mouquet N, et al. Ecophylogenetics: advances and perspectives. *Biol Rev*. 2012; 87:769–785. [PubMed: 22432924]
- Muegge BD, et al. Diet drives convergence in gut microbiome functions across mammalian phylogeny and within humans. *Science*. 2011; 332:970–4. [PubMed: 21596990]

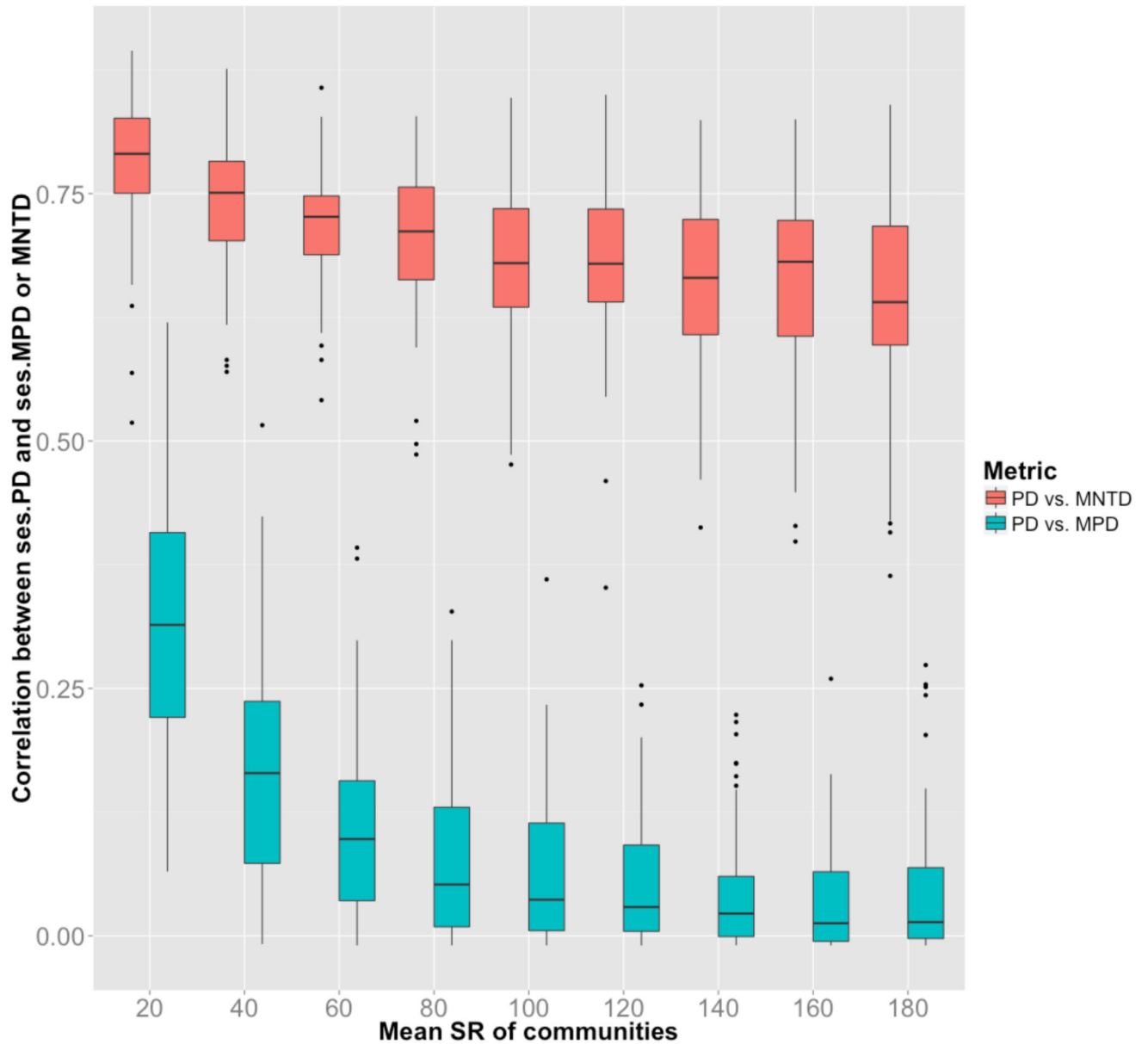
- Nyakatura K, Bininda-Emonds ORP. Updating the evolutionary history of Carnivora (Mammalia): a new species-level supertree complete with divergence time estimates. *BMC Biol.* 2012; 10:12. [PubMed: 22369503]
- O'Dwyer J, et al. Phylogenetic diversity theory sheds light on the structure of microbial communities. *PLoS Comput Biol.* 2012; 8:e1002832. [PubMed: 23284280]
- O'Meara B. Evolutionary inferences from phylogenies: a review of methods. *Annu Rev Ecol Evol Syst.* 2012; 43:267–285.
- Pavoine S, Bonsall MB. Measuring biodiversity to explain community assembly: a unified approach. *Biol Rev.* 2011; 86:792–812. [PubMed: 21155964]
- Pedersen RØ, et al. Russo D. Macroecological evidence for competitive regional-scale interactions between the two major clades of mammal carnivores (Feliformia and Caniformia). *PLoS One.* 2014; 9:e100553. [PubMed: 24971629]
- Pybus O, Harvey P. Testing macro-evolutionary models using incomplete molecular phylogenies. *Proc R Soc London Ser B.* 2000; 267:2267–2272.
- R Development Core Team. *R: A Language and Environment for Statistical Computing.* 2014
- Redding, DW., et al. Measuring Evolutionary Isolation for Conservation. *PLoS One.* Murphy, WJ., editor. Vol. 9. 2014. p. e113490
- Ricotta C. A semantic taxonomy for diversity measures. *Acta Biotheor.* 2007; 55:23–33. [PubMed: 17486413]
- Safi K, et al. Understanding global patterns of mammalian functional and phylogenetic diversity. *Philos Trans R Soc London Ser B.* 2011; 366:2536–2544. [PubMed: 21807734]
- Swenson NG. Phylogenetic beta diversity metrics, trait evolution and inferring the functional beta diversity of communities. *PLoS One.* 2011; 6:e21264. [PubMed: 21731685]
- Tucker C, Cadotte M. Unifying measures of biodiversity: understanding when richness and phylogenetic diversity should be congruent. *Divers Distrib.* 2013; 19:845–854.
- Warren DL, et al. Mistaking geography for biology: inferring processes from species distributions. *Trends Ecol Evol.* 2014; 29:572–580. [PubMed: 25172405]
- Webb S. The great American biotic interchange: patterns and processes. *Ann Missouri Bot Gard.* 2006:245–257.
- Webb CO, et al. Phylogenies and Community Ecology. *Annu Rev Ecol Evol Syst.* 2002; 33:475–505.
- Webb CO, et al. Phylocom: software for the analysis of phylogenetic community structure and trait evolution. *Bioinformatics.* 2008; 24:2098–2100. [PubMed: 18678590]
- Woodburne MO. The Great American Biotic Interchange: Dispersals, Tectonics, Climate, Sea Level and Holding Pens. *J Mamm Evol.* 2010; 17:245–264. [PubMed: 21125025]

1. Trees 2. Assemblages 3. Relative position of obs. vs. null phylo. structure



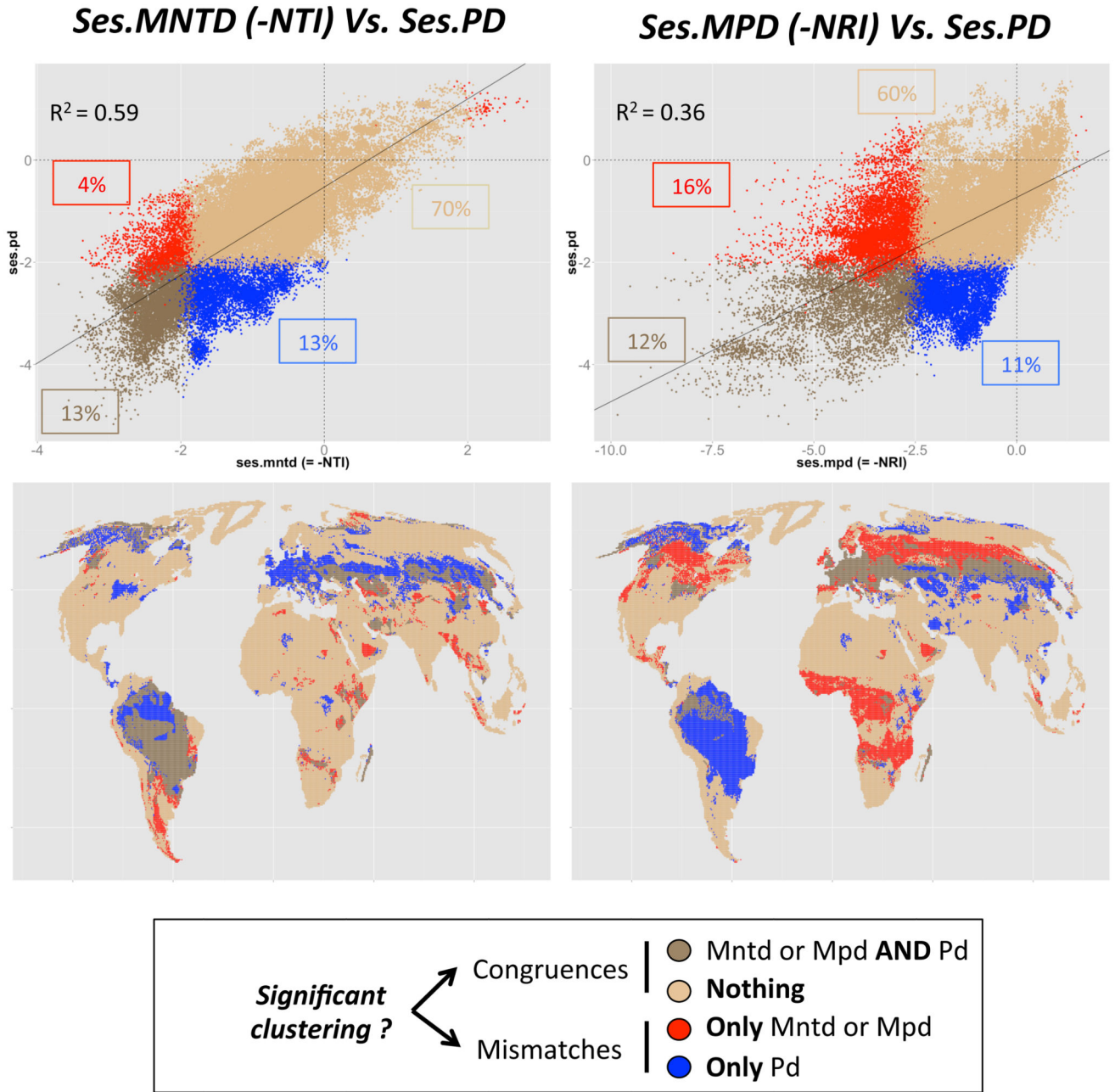
**Figure 1. Sensitivity of  $PD_{Faith}$ , MNTD and MPD to different assemblage structures and tree shapes.**

The figure depicts four balanced trees (column ‘Tree’) along with four potential assemblage (column ‘Assemblage’): coloured segments indicate that the corresponding tips on the phylogeny are present in the assemblages (i.e. species presence); from left to right: simple simple overdispersion in green; clustering of overdispersion in blue; overdispersion of clusters in red; and simple clustering in orange. The corresponding diversities are presented in the third column. Values on the X-axis correspond to the relative position of observed value compared to a null distribution (interpreted as a *p-value*). For example, a value of 0 indicates that the observation is lower than all null expectations (‘clustering’) while a value of 0.5 indicates that the observation equals to the median of the null distribution. The different metrics are represented by different symbols (see legend).



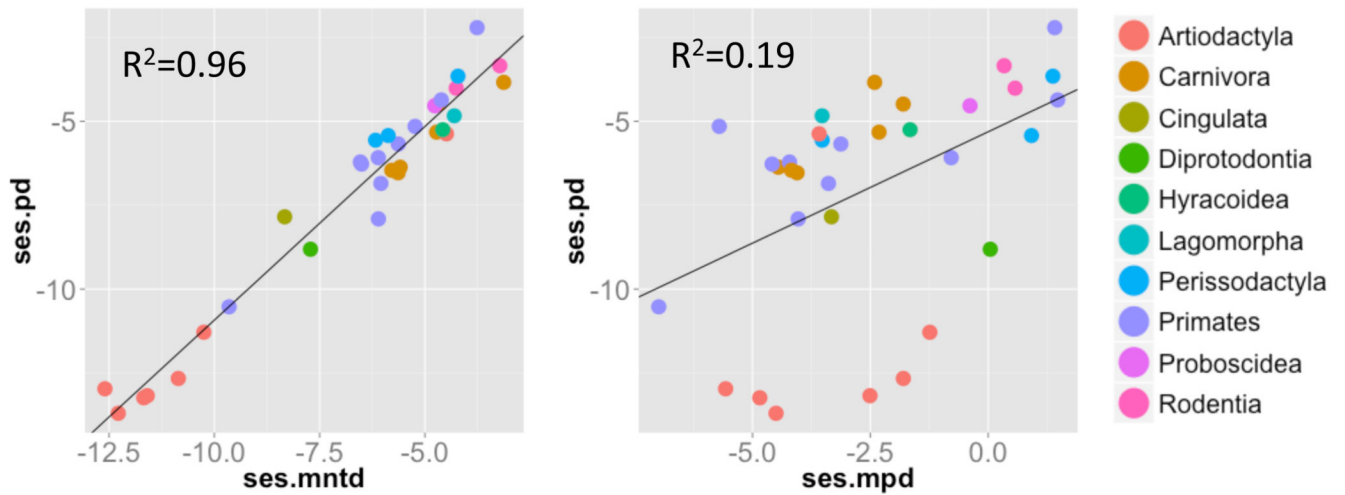
**Figure 2. Influence of assemblage species richness on diversity metrics.**

Boxplots represent  $R^2$  of the linear regressions between ses.  $PD_{Faith}$  and ses.MPD, and between ses.  $PD_{Faith}$  and ses.MNTD for 10 sets of simulated assemblages that differ in species richness (SR): from 10 to 30 species for the first set, 30 to 50 for the second, and so on, until 170 to 190 species for the last set. For each of these sets, we computed the standard effect size of each metric and the  $R^2$  of the linear relationship between the metrics. We repeated the whole procedure 100 times to obtain a distribution of  $R^2$  for each level of SR.



**Figure 3. Phylogenetic structure of carnivoran assemblages.**

The top graphs represent the relationships between  $ses.PD_{Faith}$  and  $ses.MPD$  or  $ses.MNTD$  together with the  $R^2$  of their linear relationship. The proportion of congruence and divergence are also represented in four groups: whether  $PD_{Faith}$  and  $MPD$  (or  $MNTD$ ) show congruent (significant/non-significant clustering: dark and light brown dots, respectively) or diverging results (only significant  $PD_{Faith}$  / only significant  $MPD$  (or  $MNTD$ ); blue and red dots, respectively). Bottom graphs show the spatial structure of these four types of assemblages.



**Figure 4. Mammalian guts phylogenetic structure.**

Raw relationship between  $\text{ses.PD}_{\text{Faith}}$  (Y-axis) and  $\text{ses.MPD}/\text{ses.MNTD}$  (X-axis) across 33 mammalian gut assemblages. Host orders are represented by different colours (see legend). The  $R^2$  of linear models between metrics are reported on each graph.

**Table 1**  
**Hypotheses tested, key papers and corresponding metrics used across fields to depict the phylogenetic structure of species assemblages.**

The table depicts for each of the two considered field of research (column 1) the hypotheses tested behind classic phylogenetic patterns (column 2) and key papers using either MPD/MNTD or  $PD_{Faith}$  (column 3).

Fields	Hypotheses related to the two patterns:		Metrics used to quantify the pattern; examples of key publications		
	Clustering	Over-dispersion	Biotas	MPD/MNTD	$PD_{Faith}$
Community ecology	Environmental filtering*	Competition	Micro-biotas	Goberna <i>et al.</i> 2014 Bryant <i>et al.</i> 2008	O'Dwyer <i>et al.</i> 2012
			Macro-Biotas	Webb <i>et al.</i> 2002; Graham <i>et al.</i> 2009;	Cadotte <i>et al.</i> 2009; Morlon <i>et al.</i> 2011
Macro-ecology	In-situ speciation	Biogeographic contact zones; Vicariance; Competition at large scale	Cardillo 2011b; Davies & Buckley 2011		Fritz & Rahbek 2012

\* but see Mayfield & Levine 2010